

TRACT 40837 - Portion of Block 16, Vermilion Area, Revised, Vermilion Parish, Louisiana

The beds and bottoms of all water bodies belonging to the State of Louisiana located in Block 16, Vermilion Area, Revised, together with any present lands formed by accretion to the shoreline or islands formed therein, located in Vermilion Parish, Louisiana, owned by and not presently under mineral lease as of March 11, 2009, from the State of Louisiana, the geographical area of which is more fully described as follows: Beginning at the Northeast corner of Block 16, Vermilion Area, Revised, having Coordinates of X = 1,662,140.22 and Y = 317,582.82; thence South 13,549.69 feet along the East line of said Block 16 to a point on the Three Mile Line, as decreed by the Supreme Court of the United States, as determined by a Special Master appointed therein, in litigation styled *United States v. State of Louisiana et al No. 9 Original*, in 1975, having Coordinates of X = 1,662,140.22 and Y = 304,033.13; thence along said Three Mile Line the following: Northwesterly on a straight line to a point having Coordinates of X = 1,661,678 and Y = 304,151; Northwesterly on a straight line to a point having Coordinates of X = 1,659,494 and Y = 304,616; Northwesterly along an arc to the right having a radius of 18,240.60 feet and a center at X = 1,663,290 and Y = 322,457 to a point having Coordinates of X = 1,659,476 and Y = 304,620; Northwesterly on a straight line to a point having Coordinates of X = 1,658,120.00 and Y = 304,910.00 and Northwesterly along an arc to the right having a radius of 18,240.60 feet and a center at X = 1,658,887 and Y = 323,134 to the Southeast corner of State Lease No. 17728 having Coordinates of X = 1,656,354.00 and Y = 305,070.00; thence North 5,000.00 feet along the East boundary of said State Lease No. 17728 to its Northeastern corner, also being the Easternmost Southeast corner of State Lease No. 17159, as amended, having Coordinates of X = 1,656,354.00 and Y = 310,070.00; thence North 1,912.24 feet along the East boundary of said State Lease No. 17159 to its Northeast corner having Coordinates of X = 1,656,354.00 and Y = 311,982.24; thence North 1,809.66 feet to a point on the Southern boundary of State Lease No. 3763, as amended, having Coordinates of X = 1,656,354.00 and Y = 313,791.90; thence along the boundary of said State Lease No. 3763 the following courses: North 56 degrees 25 minutes 24 seconds East 1,047.66 feet to a point having Coordinates of X = 1,657,226.85 and Y = 314,371.31; North 87 degrees 18 minutes 26 seconds East 596.22 feet to a point having Coordinates of X = 1,657,822.41 and Y = 314,399.32; North 58 degrees 44 minutes 03 seconds East 1,687.27 feet to a point having Coordinates of X = 1,659,264.63 and Y = 315,275.03; North 59 degrees 16 minutes 15 seconds East 1,025.81 feet to a point having Coordinates of X = 1,660,146.41 and Y = 315,799.20; North 54 degrees 35 minutes 36 seconds East 780.63 feet to a point having Coordinates of X = 1,660,782.67 and Y = 316,251.48; North 50 degrees 50 minutes 26 seconds East 743.10 feet to a point having Coordinates of X = 1,661,358.86 and Y = 316,720.73 and North 20 degrees 42 minutes 29 seconds East 921.63 feet to its Northeast corner, also being a point on the North line of said Block 16 having Coordinates of X = 1,661,684.76 and Y = 317,582.82; thence East 455.46 feet along the North line of said Block 16 to the point of

beginning, containing approximately **1,433.75 acres, LESS AND EXCEPT** that portion thereof, if any, lying seaward of the line three nautical miles from the coast line of Louisiana, as said three mile line has been decreed by the Supreme Court of the United States, as determined by a Special Master appointed therein, in litigation styled **United States v. State of Louisiana et al No. 9 Original**, in 1975, all as more particularly outlined on a plat in the Office of Mineral Resources, Department of Natural Resources. All bearings, distances and coordinates are based on the Louisiana Coordinate System of 1927, (South Zone).

NOTE: The above description of the Tract nominated for lease has been provided and corrected, where required, exclusively by the nomination party. Any mineral lease selected from this Tract and awarded by the Louisiana State Mineral Board shall be without warranty of any kind, either express, implied, or statutory, including, but not limited to, the implied warranties of merchantability and fitness for a particular purpose. Should the mineral lease awarded by the Louisiana State Mineral Board be subsequently modified, cancelled or abrogated due to the existence of conflicting leases, operating agreements, private claims or other future obligations or conditions which may affect all or any portion of the leased Tract, it shall not relieve the Lessee of the obligation to pay any bonus due thereon to the Louisiana State Mineral Board, nor shall the Louisiana State Mineral Board be obligated to refund any consideration paid by the Lessor prior to such modification, cancellation, or abrogation, including, but not limited to, bonuses, rentals and royalties.

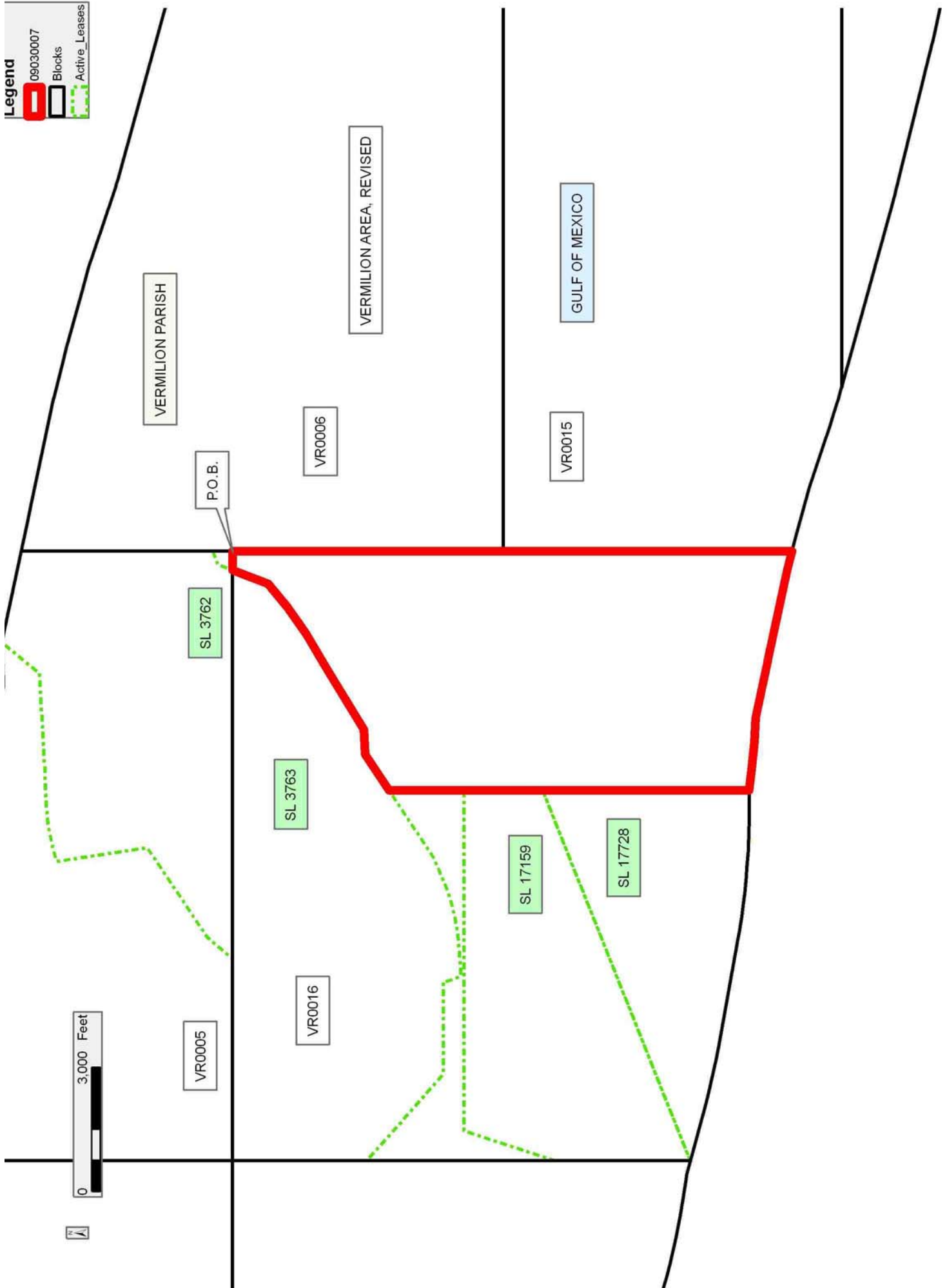
NOTE: The State of Louisiana does hereby reserve, and this lease shall be subject to, the imprescriptible right of surface use in the nature of a servitude in favor of the Department of Natural Resources, including its Offices and Commissions, for the sole purpose of implementing, constructing, servicing and maintaining approved coastal zone management and/or restoration projects. Utilization of any and all rights derived under this lease by the mineral lessee, its agents, successors or assigns, shall not interfere with nor hinder the reasonable surface use by the Department of Natural Resources, its Offices or Commissions, as herein above reserved.

Bidder	Cash Payment	Price/Acre	Rental	Oil	Gas	Other

Applicant: ROBERT A. SCHROEDER, INC.

Legend

- 09030007
- Blocks
- Active_Leases



TRACT 40838 - Portion of Block 16, Vermilion Area, Revised, Vermilion Parish, Louisiana

The beds and bottoms of all water bodies belonging to the State of Louisiana located in Block 16, Vermilion Area, Revised, together with any present lands formed by accretion to the shoreline or islands formed therein, located in Vermilion Parish, Louisiana, owned by and not presently under mineral lease as of March 11, 2009, from the State of Louisiana, the geographical area of which is more fully described as follows: Beginning at a point on the West line of Block 16, Vermilion Area, Revised, also being the Westernmost Southwest corner of State Lease No. 3763, as amended, having Coordinates of X = 1,647,382.17 and Y = 314,330.55; thence along the boundary of said State Lease No. 3763 the following courses: South 48 degrees 32 minutes 54 seconds East 1,771.53 feet to a point having Coordinates of X = 1,648,709.96 and Y = 313,157.82; South 48 degrees 50 minutes 00 seconds East 1,031.90 feet to a point having Coordinates of X = 1,649,486.77 and Y = 312,478.57; East 2,231.22 feet to a point having Coordinates of X = 1,651,717.99 and Y = 312,478.57; South 08 degrees 54 minutes 37 seconds East 36.35 feet to a point having Coordinates of X = 1,651,723.62 and Y = 312,442.66; South 13 degrees 52 minutes 58 seconds East 166.50 feet to a point having Coordinates of X = 1,651,763.57 and Y = 312,281.02; South 21 degrees 50 minutes 10 seconds East 246.22 feet to a point having Coordinates of X = 1,651,855.15 and Y = 312,052.47; North 86 degrees 37 minutes 06 seconds East 660.49 feet to a point having Coordinates of X = 1,652,514.49 and Y = 312,091.43; North 83 degrees 44 minutes 53 seconds East 502.58 feet to a point having Coordinates of X = 1,653,014.08 and Y = 312,146.16; North 79 degrees 37 minutes 41 seconds East 246.34 feet to a point having Coordinates of X = 1,653,256.39 and Y = 312,190.51; North 75 degrees 35 minutes 37 seconds East 500.25 feet to a point having Coordinates of X = 1,653,740.91 and Y = 312,314.97; North 71 degrees 34 minutes 06 seconds East 286.52 feet to a point having Coordinates of X = 1,654,012.73 and Y = 312,405.56; North 66 degrees 39 minutes 07 seconds East 787.41 feet to a point having Coordinates of X = 1,654,735.66 and Y = 312,717.62 and North 56 degrees 25 minutes 23 seconds East 1,942.45 feet to a point having Coordinates of X = 1,656,354.00 and Y = 313,791.90; thence South 1,809.66 feet to the Northeast corner of State Lease No. 17159, as amended, having Coordinates of X = 1,656,354.00 and Y = 311,982.24; thence along the boundary of said State Lease No. 17159 the following courses: West 8,242.65 feet to a point having Coordinates of X = 1,648,111.35 and Y = 311,982.24 and South 18 degrees 10 minutes 12 seconds West 2,338.34 feet to a point on the West line of said Block 16 having Coordinates of X = 1,647,382.17 and Y = 309,760.50; thence North 4,570.05 feet along the West line of said Block 16 to the point of beginning, containing **179.65 acres**, all as more particularly outlined on a plat on file in the Office of Mineral Resources, Department of Natural Resources. All bearings, distances and coordinates are based on Louisiana Coordinate System of 1927, (North or South Zone).

NOTE: The above description of the Tract nominated for lease has been provided and corrected, where required, exclusively by the nomination party. Any mineral lease selected from this Tract and awarded by the Louisiana State Mineral Board shall be without warranty of any kind, either express, implied, or statutory, including, but not limited to, the implied warranties of merchantability and fitness for a particular purpose. Should the mineral lease awarded by the Louisiana State Mineral Board be subsequently modified, cancelled or abrogated due to the existence of conflicting leases, operating agreements, private claims or other future obligations or conditions which may affect all or any portion of the leased Tract, it shall not relieve the Lessee of the obligation to pay any bonus due thereon to the Louisiana State Mineral Board, nor shall the Louisiana State Mineral Board be obligated to refund any consideration paid by the Lessor prior to such modification, cancellation, or abrogation, including, but not limited to, bonuses, rentals and royalties.

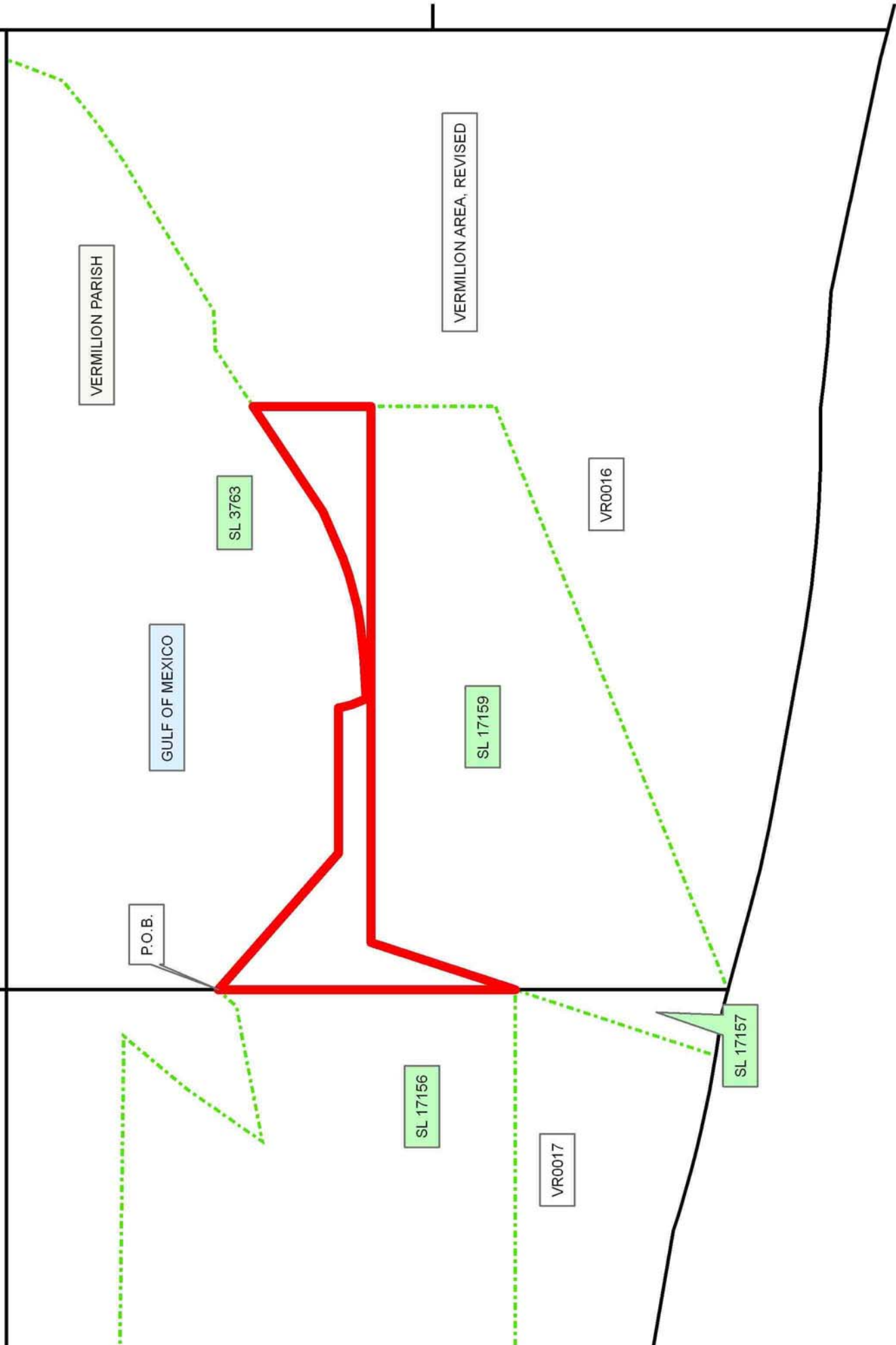
NOTE: The State of Louisiana does hereby reserve, and this lease shall be subject to, the imprescriptible right of surface use in the nature of a servitude in favor of the Department of Natural Resources, including its Offices and Commissions, for the sole purpose of implementing, constructing, servicing and maintaining approved coastal zone management and/or restoration projects. Utilization of any and all rights derived under this lease by the mineral lessee, its agents, successors or assigns, shall not interfere with nor hinder the reasonable surface use by the Department of Natural Resources, its Offices or Commissions, as herein above reserved.

Applicant: ROBERT A. SCHROEDER, INC.

Bidder	Cash Payment	Price/Acre	Rental	Oil	Gas	Other

Legend

- 09030006
- Blocks
- Active_Leases



TRACT 40839 - Portion of Block 17, Vermilion Area, Revised, Vermilion Parish, Louisiana

The beds and bottoms of all water bodies belonging to the State of Louisiana located in Block 17, Vermilion Area, Revised, together with any present lands formed by accretion to the shoreline or islands formed therein, located in Vermilion Parish, Louisiana, owned by and not presently under mineral lease as of March 11, 2009, from the State of Louisiana, the geographical area of which is more fully described as follows: Beginning at a point on the East line of Block 17, Vermilion Area, Revised, also being the Southeast corner of State Lease No. 17156 and the Northernmost point of State Lease No. 17157, as amended, having Coordinates of X = 1,647,382.17 and Y = 309,760.50; thence South 18 degrees 10 minutes 12 seconds West 3,240.45 feet along the Western boundary of said State Lease No. 17157 to a point on the Three Mile Line, as decreed by the Supreme Court of the United States, as determined by a Special Master appointed therein, in litigation styled *United States v. State of Louisiana et al No. 9 Original*, in 1975, having Coordinates of X = 1,646,371.68 and Y = 306,681.63; thence along said Three Mile Line the following: Northwesterly along an arc to the right having a radius of 18,240.60 feet and a center at X = 1,649,308 and Y = 324,684 to a point having Coordinates of X = 1,643,681 and Y = 307,333 and Northwesterly on a straight line to a point having Coordinates of X = 1,639,824.12 and Y = 307,998.00; thence North 1,762.50 feet to the Southernmost Southwest corner of said State Lease No. 17156 having Coordinates of X = 1,639,824.12 and Y = 309,760.50; thence East 7,558.05 feet along a Southern boundary of said State Lease No. 17156 to the point of beginning, containing approximately **393.50 acres, LESS AND EXCEPT** that portion thereof, if any, lying seaward of the line three nautical miles from the coast line of Louisiana, as said three mile line has been decreed by the Supreme Court of the United States, as determined by a Special Master appointed therein, in litigation styled **United States v. State of Louisiana et al No. 9 Original**, in 1975, all as more particularly outlined on a plat in the Office of Mineral Resources, Department of Natural Resources. All bearings, distances and coordinates are based on the Louisiana Coordinate System of 1927, (South Zone).

NOTE: The above description of the Tract nominated for lease has been provided and corrected, where required, exclusively by the nomination party. Any mineral lease selected from this Tract and awarded by the Louisiana State Mineral Board shall be without warranty of any kind, either express, implied, or statutory, including, but not limited to, the implied warranties of merchantability and fitness for a particular purpose. Should the mineral lease awarded by the Louisiana State Mineral Board be subsequently modified, cancelled or abrogated due to the existence of conflicting leases, operating agreements, private claims or other future obligations or conditions which may affect all or any portion of the leased Tract, it shall not relieve the Lessee of the obligation to pay any bonus due thereon to the Louisiana State Mineral Board, nor shall the Louisiana State Mineral Board be obligated to refund any consideration

paid by the Lessor prior to such modification, cancellation, or abrogation, including, but not limited to, bonuses, rentals and royalties.

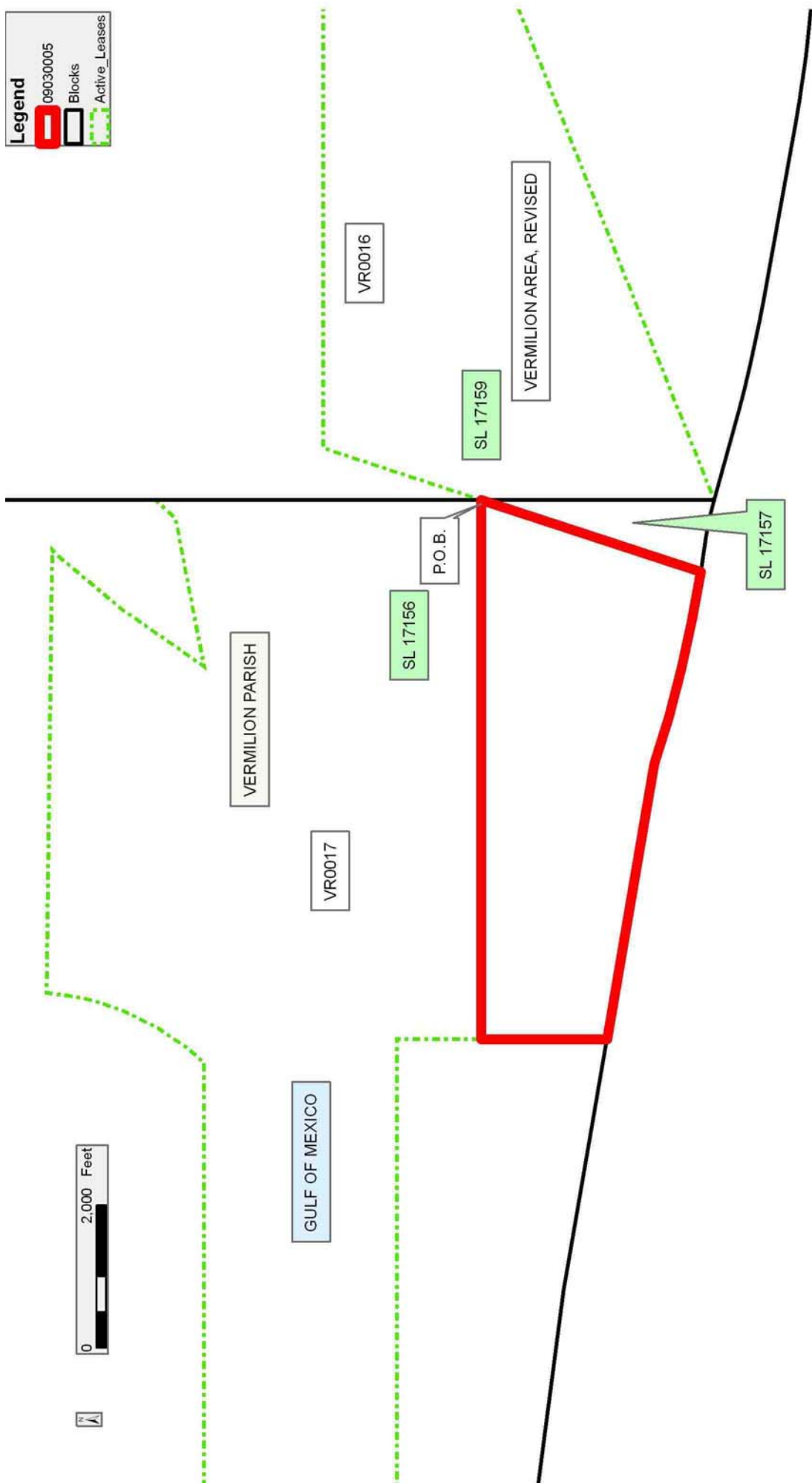
NOTE: The State of Louisiana does hereby reserve, and this lease shall be subject to, the imprescriptible right of surface use in the nature of a servitude in favor of the Department of Natural Resources, including its Offices and Commissions, for the sole purpose of implementing, constructing, servicing and maintaining approved coastal zone management and/or restoration projects. Utilization of any and all rights derived under this lease by the mineral lessee, its agents, successors or assigns, shall not interfere with nor hinder the reasonable surface use by the Department of Natural Resources, its Offices or Commissions, as herein above reserved.

Applicant: ROBERT A. SCHROEDER, INC.

Bidder	Cash Payment	Price/Acre	Rental	Oil	Gas	Other

Legend

- 09030005
- Blocks
- Active_Leases



TRACT 40840 - Portion of Block 45, Main Pass Area, Revised, Plaquemines Parish, Louisiana

The beds and bottoms of all water bodies belonging to the State of Louisiana located in Block 45, Main Pass Area, Revised, together with any present lands formed by accretion to the shoreline or islands formed therein, located in Plaquemines Parish, Louisiana, owned by and not presently under mineral lease as of March 11, 2009, from the State of Louisiana, the geographical area of which is more fully described as follows: Beginning at a point having Coordinates of X = 2,694,350.00 and Y = 263,330.00, said point being the southeast corner of Block 45, Main Pass Area, Revised; thence West 13,030.82 feet along the south line of said Block 45, Main Pass Area, Revised, to a point on the Louisiana Coastline, as decreed by the Supreme Court of the United States, as determined by a Special Master appointed therein, in litigation styled *United States v. State of Louisiana et al No. 9 Original*, in 1975, having Coordinates of X = 2,681,319.18 and Y = 263,330.00; thence North 06 degrees 06 minutes 01 seconds West 4,113.29 feet along said Louisiana Coast Line to a point having Coordinates of X = 2,680,882.07 and Y = 267,420.00; thence East 13,467.93 feet to a point having Coordinates of X = 2,694,350.00 and Y = 267,420.00, said point being on the east line of said Block 45, Main Pass Area, Revised; thence South 4,090.00 feet along said east line of said Block 45, Main Pass Area, Revised, to the point of beginning, containing **1,244.03 acres**, all as more particularly outlined on a plat on file in the Office of Mineral Resources, Department of Natural Resources. All bearings, distances and coordinates are based on Louisiana Coordinate System of 1927, (North or South Zone).

NOTE: The above description of the Tract nominated for lease has been provided and corrected, where required, exclusively by the nomination party. Any mineral lease selected from this Tract and awarded by the Louisiana State Mineral Board shall be without warranty of any kind, either express, implied, or statutory, including, but not limited to, the implied warranties of merchantability and fitness for a particular purpose. Should the mineral lease awarded by the Louisiana State Mineral Board be subsequently modified, cancelled or abrogated due to the existence of conflicting leases, operating agreements, private claims or other future obligations or conditions which may affect all or any portion of the leased Tract, it shall not relieve the Lessee of the obligation to pay any bonus due thereon to the Louisiana State Mineral Board, nor shall the Louisiana State Mineral Board be obligated to refund any consideration paid by the Lessor prior to such modification, cancellation, or abrogation, including, but not limited to, bonuses, rentals and royalties.

NOTE: The State of Louisiana does hereby reserve, and this lease shall be subject to, the imprescriptible right of surface use in the nature of a servitude in favor of the Department of Natural Resources, including its Offices and Commissions, for the sole purpose of implementing, constructing, servicing and maintaining approved coastal zone management and/or restoration projects. Utilization of any and all rights derived

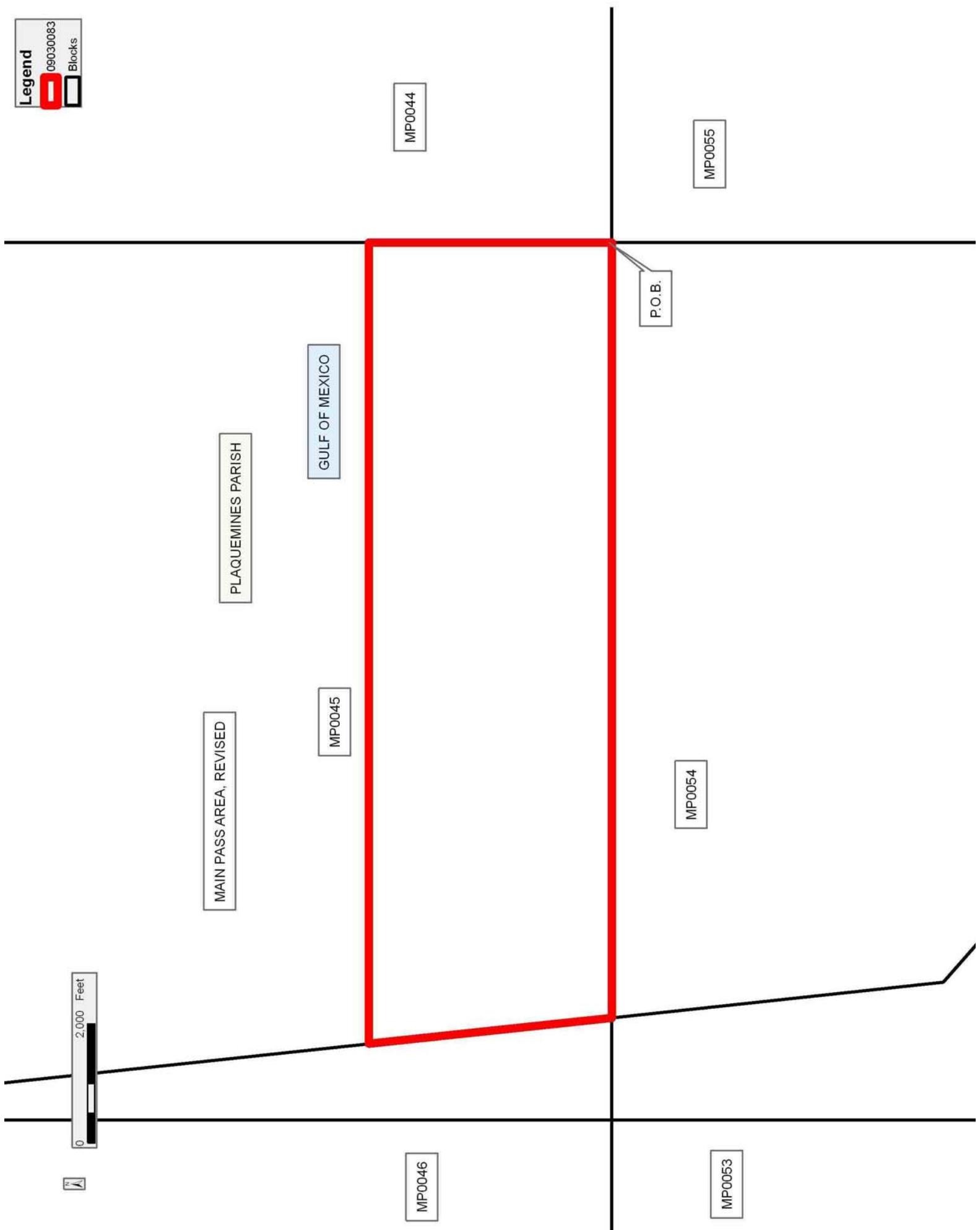
under this lease by the mineral lessee, its agents, successors or assigns, shall not interfere with nor hinder the reasonable surface use by the Department of Natural Resources, its Offices or Commissions, as herein above reserved.

NOTE: The Department of Wildlife and Fisheries has designated certain areas in the coastal waters of the State of Louisiana as Oyster Seed Bed Areas. The exact location of those Seed Bed Areas must be obtained from the Department of Wildlife and Fisheries and any work done under a mineral lease from the State of Louisiana may necessarily be conducted in conformity with the rules and regulations promulgated by the said Department of Wildlife and Fisheries for Oyster Seed Bed Areas.

Applicant: ROBERT A. SCHROEDER, INC.

Bidder	Cash Payment	Price/Acre	Rental	Oil	Gas	Other

Legend
09030083
Blocks



TRACT 40841 - Portion of Block 54, Main Pass Area, Revised, Plaquemines Parish, Louisiana

The beds and bottoms of all water bodies belonging to the State of Louisiana located in Block 54, Main Pass Area, Revised, together with any present lands formed by accretion to the shoreline or islands formed therein, located in Plaquemines Parish, Louisiana, owned by and not presently under mineral lease as of March 11, 2009, from the State of Louisiana, the geographical area of which is more fully described as follows: Beginning at a point having Coordinates of X = 2,694,350.00 and Y = 263,330.00, said point the northeast corner of Block 54, Main Pass Area, Revised; thence South 6,500.00 feet along the east line of said Block 54, Main Pass Area, Revised, to a point having Coordinates of X = 2,694,350.00 and Y = 256,830.00; thence West 11,379.77 feet to a point having Coordinates of X = 2,682,970.23 and Y = 256,830.00, said point being on the Louisiana Coastline, as decreed by the Supreme Court of the United States, as determined by a Special Master appointed therein, in litigation styled *United States v. State of Louisiana et al No. 9 Original*, in 1975; thence along said Louisiana Coast Line the following courses: North 48 degrees 45 minutes 46 seconds West 1,403.26 feet to a point having Coordinates of X = 2,681,915 and Y = 257,755, and North 06 degrees 06 minutes 01 seconds West 5,606.75 feet to a point having Coordinates of X = 2,681,319.18 and Y = 263,330.00, said point being on the north line of said Block 54, Main Pass Area, Revised; thence East 13,030.82 feet along said north line of said Block 54, Main Pass Area, Revised, to the point of beginning, containing **1,882.47 acres**, all as more particularly outlined on a plat on file in the Office of Mineral Resources, Department of Natural Resources. All bearings, distances and coordinates are based on Louisiana Coordinate System of 1927, (North or South Zone).

NOTE: The above description of the Tract nominated for lease has been provided and corrected, where required, exclusively by the nomination party. Any mineral lease selected from this Tract and awarded by the Louisiana State Mineral Board shall be without warranty of any kind, either express, implied, or statutory, including, but not limited to, the implied warranties of merchantability and fitness for a particular purpose. Should the mineral lease awarded by the Louisiana State Mineral Board be subsequently modified, cancelled or abrogated due to the existence of conflicting leases, operating agreements, private claims or other future obligations or conditions which may affect all or any portion of the leased Tract, it shall not relieve the Lessee of the obligation to pay any bonus due thereon to the Louisiana State Mineral Board, nor shall the Louisiana State Mineral Board be obligated to refund any consideration paid by the Lessor prior to such modification, cancellation, or abrogation, including, but not limited to, bonuses, rentals and royalties.

NOTE: The State of Louisiana does hereby reserve, and this lease shall be subject to, the imprescriptible right of surface use in the nature of a servitude in favor of the Department of Natural Resources, including its Offices and Commissions, for the sole purpose of implementing,

constructing, servicing and maintaining approved coastal zone management and/or restoration projects. Utilization of any and all rights derived under this lease by the mineral lessee, its agents, successors or assigns, shall not interfere with nor hinder the reasonable surface use by the Department of Natural Resources, its Offices or Commissions, as herein above reserved.

NOTE: The Department of Wildlife and Fisheries has designated certain areas in the coastal waters of the State of Louisiana as Oyster Seed Bed Areas. The exact location of those Seed Bed Areas must be obtained from the Department of Wildlife and Fisheries and any work done under a mineral lease from the State of Louisiana may necessarily be conducted in conformity with the rules and regulations promulgated by the said Department of Wildlife and Fisheries for Oyster Seed Bed Areas.

Applicant: ROBERT A. SCHROEDER, INC.

Bidder	Cash Payment	Price/Acre	Rental	Oil	Gas	Other

Legend
09030084
Blocks

MP0044

MP0055

P.O.B.

GULF OF MEXICO

MAIN PASS AREA, REVISED

PLAQUEMINES PARISH

MP0045

MP0054

