

TRACT 38114 - Portion of Block 20, South Pass Area, Plaquemines Parish, Louisiana

The beds and bottoms of all water bodies belonging to the State of Louisiana located in Block 20, South Pass Area, together with any present lands formed by accretion to the shoreline or islands formed therein, located in Plaquemines Parish, Louisiana, owned by and not presently under mineral lease as of March 8, 2006, from the State of Louisiana, the geographical area of which is more fully described as follows: Beginning at the Southeast corner of said Block 20, South Pass Area having Coordinates of X = 2,719,234.00 and Y = 126,424.00; thence West 6,158.75 feet along the South boundary of said Block 20 to a point on the Eastern boundary of the Pass A Loutre Wildlife Management Area having Coordinates of X = 2,713,075.25 and Y = 126,424.00; thence along the said Eastern boundary of the Pass A Loutre Wildlife Management Area Northeasterly on an arc to the left having a radius of 77,200.00 feet and a center at X = 2,656,474.99 and Y = 178,924.00 to a point on the East boundary of said Block 20 having Coordinates of X = 2,719,234.00 and Y = 133,966.84; thence South 7,542.84 feet along the said East boundary of Block 20 to the point of beginning, containing approximately **510.31 acres**, all as more particularly outlined on a plat on file in the Office of Mineral Resources, Department of Natural Resources. All bearings, distances and coordinates are based on Louisiana Coordinate System of 1927, (North or South Zone).

NOTE: The above description of the Tract nominated for lease has been provided and corrected, where required, exclusively by the nomination party. Any mineral lease selected from this Tract and awarded by the Louisiana State Mineral Board shall be without warranty of any kind, either express, implied, or statutory, including, but not limited to, the implied warranties of merchantability and fitness for a particular purpose. Should the mineral lease awarded by the Louisiana State Mineral Board be subsequently modified, cancelled or abrogated due to the existence of conflicting leases, operating agreements, private claims or other future obligations or conditions which may affect all or any portion of the leased Tract, it shall not relieve the Lessee of the obligation to pay any bonus due thereon to the Louisiana State Mineral Board, nor shall the Louisiana State Mineral Board be obligated to refund any consideration paid by the Lessor prior to such modification, cancellation, or abrogation, including, but not limited to, bonuses, rentals and royalties.

NOTE: The State of Louisiana does hereby reserve, and this lease shall be subject to, the imprescriptible right of surface use in the nature of a servitude in favor of the Department of Natural Resources, including its Offices and Commissions, for the sole purpose of implementing, constructing, servicing and maintaining approved coastal zone management and/or restoration projects. Utilization of any and all rights derived under this lease by the mineral lessee, its agents, successors or assigns, shall not interfere with nor hinder the reasonable surface use by the

Department of Natural Resources, its Offices or Commissions, as herein above reserved.

NOTE: It appears, according to our records, that a portion of this Tract is located within the restrictive safety fairway area as set out by the Corps of Engineers, U.S. Army and/or the restrictive anchorage area as set out by the U.S. Coast Guard.

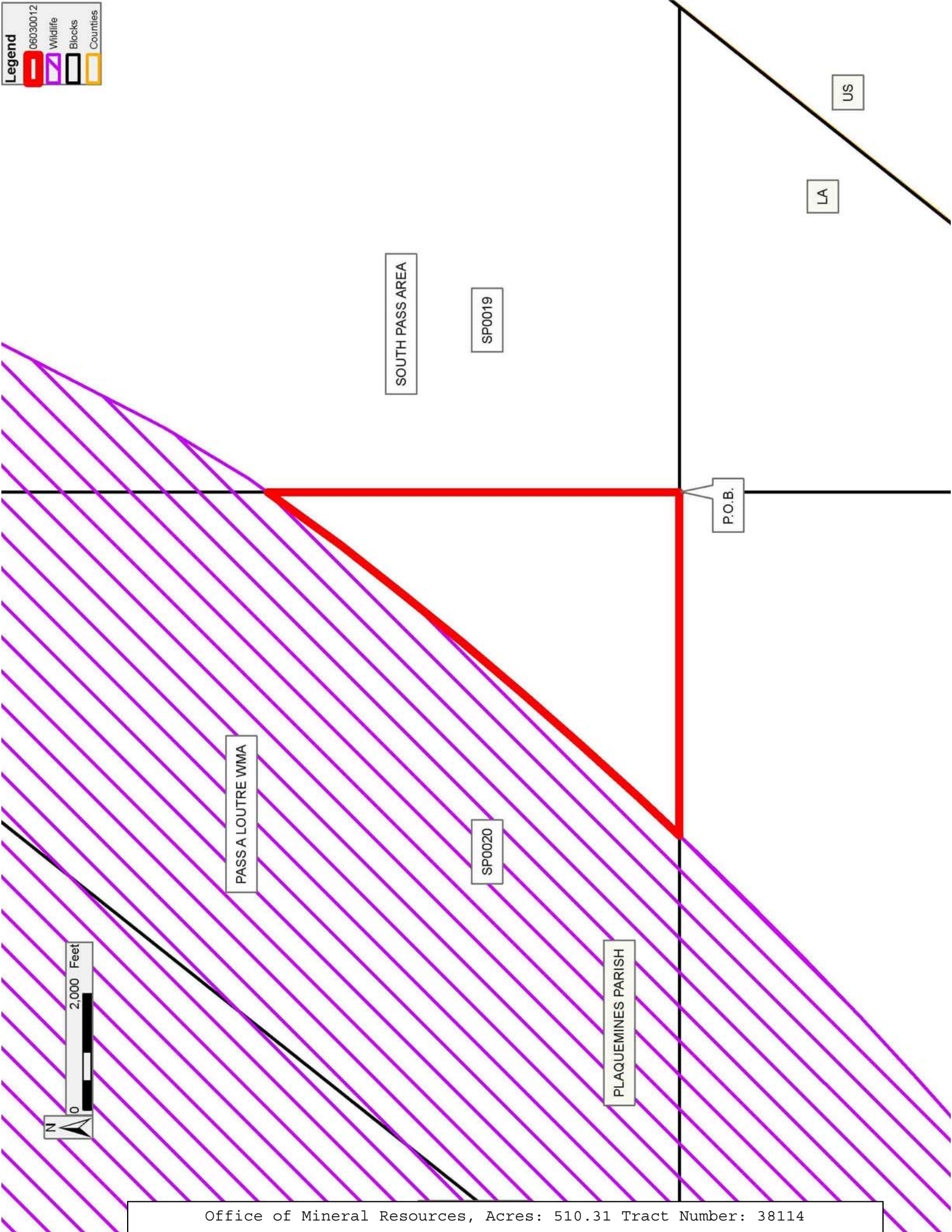
NOTE: The Department of Wildlife and Fisheries has designated certain areas in the coastal waters of the State of Louisiana as Oyster Seed Bed Areas. The exact location of those Seed Bed Areas must be obtained from the Department of Wildlife and Fisheries and any work done under a mineral lease from the State of Louisiana may necessarily be conducted in conformity with the rules and regulations promulgated by the said Department of Wildlife and Fisheries for Oyster Seed Bed Areas.

Applicant: CYPRESS ENERGY CORPORATION

Bidder	Cash Payment	Price/ Acre	Rental	Oil	Gas	Other

Legend

- 06030012
- Wildlife
- Blocks
- Counties



TRACT 38115 - Portion of Block 31, South Pass Area, Plaquemines Parish, Louisiana

The beds and bottoms of all water bodies belonging to the State of Louisiana located in Block 31, South Pass Area, together with any present lands formed by accretion to the shoreline or islands formed therein, located in Plaquemines Parish, Louisiana, owned by and not presently under mineral lease as of March 8, 2006, from the State of Louisiana, the geographical area of which is more fully described as follows: Beginning at the Northeast corner of Block 31, South Pass Area, having Coordinates of X = 2,719,234.00 and Y = 126,424.00; thence South 3,560.32 feet along the East boundary of said Block 31 to the Northeast corner of Area 2 of State Lease No. 14860, as amended, having Coordinates of X = 2,719,234.00 and Y = 122,863.68; thence along the Northern boundary of said Area 2 of State Lease No. 14860, as amended, the following courses: South 85 degrees 34 minutes 37 seconds West 195.73 feet to a point having Coordinates of X = 2,719,038.86 and Y = 122,848.59, Northwesterly on an arc to the right having a radius of 3,099.00 feet and a center at X = 2,718,243.95 and Y = 125,843.90 to a point having Coordinates of X = 2,715,783.65 and Y = 123,959.56, North 39 degrees 44 minutes 39 seconds West 563.25 feet to a point having Coordinates of X = 2,715,423.53 and Y = 124,392.64, North 46 degrees 18 minutes 17 seconds West 893.54 feet to a point having Coordinates of X = 2,714,777.48 and Y = 125,009.92, Northwesterly on an arc to the left having a radius of 3,544.19 feet and a center at X = 2,712,563.32 and Y = 122,242.47 to a point having Coordinates of X = 2,713,865.28 and Y = 125,538.87, North 73 degrees 00 minutes 00 seconds West 1,182.71 feet to a point having Coordinates of X = 2,712,734.25 and Y = 125,884.66 and North 65 degrees 23 minutes 44 seconds West 125.98 feet to a point on the Eastern boundary of the Pass A Loutre Wildlife Management Area having Coordinates of X = 2,712,619.71 and Y = 125,937.11; thence along the said Eastern boundary of the Pass A Loutre Wildlife Management Area Northeasterly on an arc to the left having a radius of 77,200.00 feet and a center at X = 2,656,474.99 and Y = 178,924.00 to a point on the North boundary of said Block 31 having Coordinates of X = 2,713,075.25 and Y = 126,424.00; thence East 6,158.75 feet along the said Northern boundary of said Block 31 to the point of beginning, containing approximately **354.45 acres**, all as more particularly outlined on a plat on file in the Office of Mineral Resources, Department of Natural Resources. All bearings, distances and coordinates are based on Louisiana Coordinate System of 1927, (North or South Zone).

NOTE: The above description of the Tract nominated for lease has been provided and corrected, where required, exclusively by the nomination party. Any mineral lease selected from this Tract and awarded by the Louisiana State Mineral Board shall be without warranty of any kind, either express, implied, or statutory, including, but not limited to, the implied warranties of merchantability and fitness for a particular purpose. Should the mineral lease awarded by the Louisiana State Mineral Board be subsequently modified, cancelled or abrogated due to the existence of conflicting leases, operating agreements, private claims or

other future obligations or conditions which may affect all or any portion of the leased Tract, it shall not relieve the Lessee of the obligation to pay any bonus due thereon to the Louisiana State Mineral Board, nor shall the Louisiana State Mineral Board be obligated to refund any consideration paid by the Lessor prior to such modification, cancellation, or abrogation, including, but not limited to, bonuses, rentals and royalties.

NOTE: The State of Louisiana does hereby reserve, and this lease shall be subject to, the imprescriptible right of surface use in the nature of a servitude in favor of the Department of Natural Resources, including its Offices and Commissions, for the sole purpose of implementing, constructing, servicing and maintaining approved coastal zone management and/or restoration projects. Utilization of any and all rights derived under this lease by the mineral lessee, its agents, successors or assigns, shall not interfere with nor hinder the reasonable surface use by the Department of Natural Resources, its Offices or Commissions, as herein above reserved.

NOTE: It appears, according to our records, that a portion of this Tract is located within the restrictive safety fairway area as set out by the Corps of Engineers, U.S. Army and/or the restrictive anchorage area as set out by the U.S. Coast Guard.

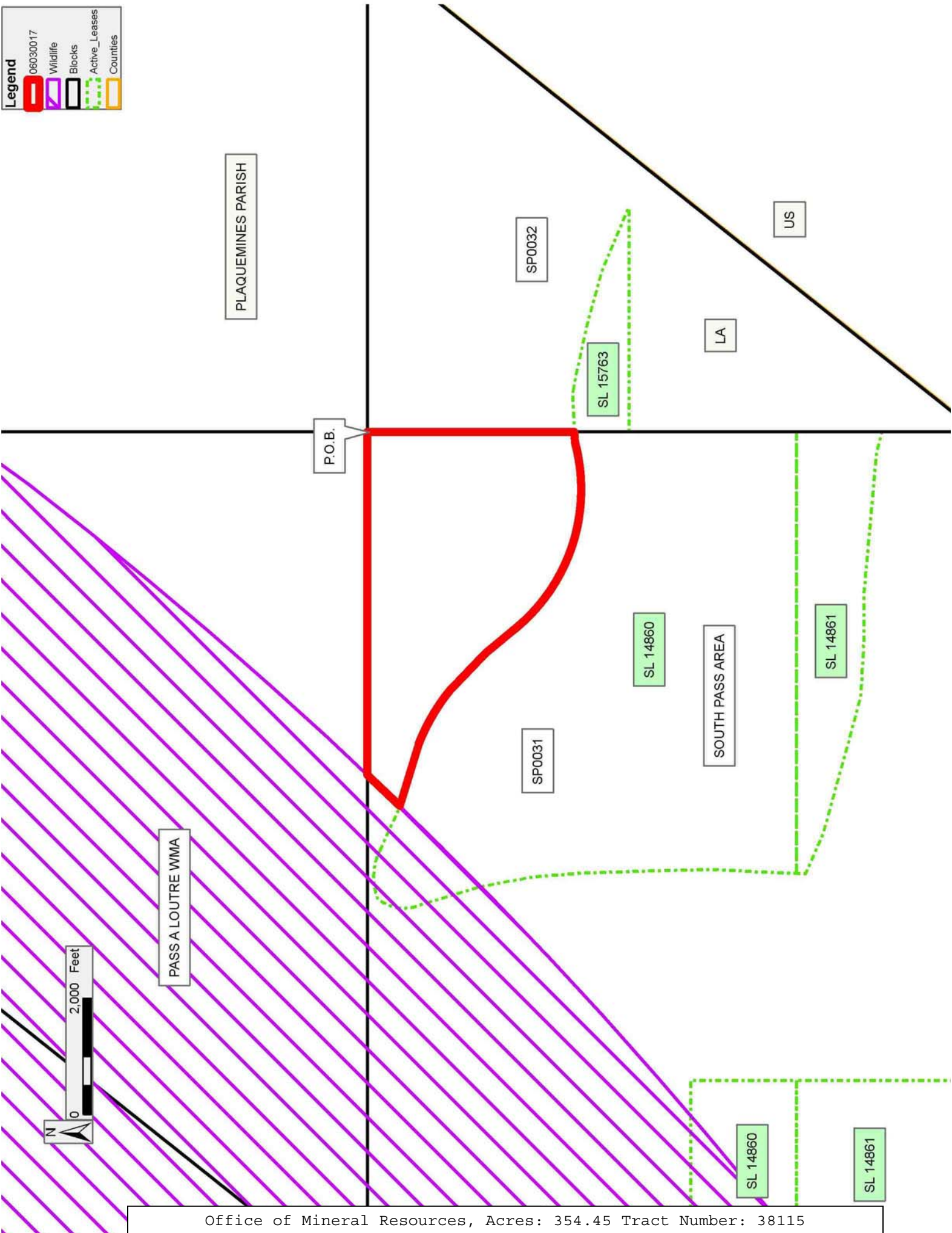
NOTE: The Department of Wildlife and Fisheries has designated certain areas in the coastal waters of the State of Louisiana as Oyster Seed Bed Areas. The exact location of those Seed Bed Areas must be obtained from the Department of Wildlife and Fisheries and any work done under a mineral lease from the State of Louisiana may necessarily be conducted in conformity with the rules and regulations promulgated by the said Department of Wildlife and Fisheries for Oyster Seed Bed Areas.

Applicant: CYPRESS ENERGY CORPORATION

Bidder	Cash Payment	Price/ Acre	Rental	Oil	Gas	Other

Legend

- 06030017
- Wildlife
- Blocks
- Active_Leases
- Counties



TRACT 38116 - Portion of Block 31, South Pass Area, Plaquemines Parish, Louisiana

The beds and bottoms of all water bodies belonging to the State of Louisiana located in Block 31, South Pass Area, together with any present lands formed by accretion to the shoreline or islands formed therein, located in Plaquemines Parish, Louisiana, owned by and not presently under mineral lease as of March 8, 2006, from the State of Louisiana, the geographical area of which is more fully described as follows: Beginning at the Southeast corner of Area 1 of State Lease No. 14860, as amended, also being the most Northerly Northeast corner of Area 2 of State Lease No. 14861, as amended, having Coordinates of X = 2,708,075.98 and Y = 119,045.00; thence along the East and North boundaries of said Area 1 of State Lease No. 14860, as amended, the following courses: North 1,818.96 feet to its Northeast corner having Coordinates of X = 2,708,075.98 and Y = 120,863.96 and West 720.04 feet to a point on the Eastern boundary of the Pass A Loutre Wildlife Management Area having Coordinates of X = 2,707,355.94 and Y = 120,863.96; thence along the said Eastern boundary of the Pass A Loutre Wildlife Management Area Northeasterly on an arc to the left having a radius of 77,200.00 feet and a center at X = 2,656,474.99 and Y = 178,924.00 to a point on the Western boundary of Area 2 of said State Lease No. 14860, as amended, having Coordinates of X = 2,711,361.06 and Y = 124,634.41; thence along the said Western boundary of Area 2 of State Lease No. 14860, as amended, the following courses: South 16 degrees 41 minutes 33 seconds East 182.54 feet to a point having Coordinates of X = 2,711,413.49 and Y = 124,459.56, South 10 degrees 05 minutes 46 seconds East 893.20 feet to a point having Coordinates of X = 2,711,570.07 and Y = 123,580.19, South 05 degrees 06 minutes 51 seconds East 872.77 feet to a point having Coordinates of X = 2,711,647.87 and Y = 122,710.90, South 01 degrees 32 minutes 32 seconds East 1,597.29 feet to a point having Coordinates of X = 2,711,690.86 and Y = 121,114.19, South 00 degrees 57 minutes 05 seconds East 706.31 feet to a point having Coordinates of X = 2,711,702.59 and Y = 120,407.97, South 02 degrees 41 minutes 10 seconds West 757.81 feet to a point having Coordinates of X = 2,711,667.07 and Y = 119,651.00 and South 01 degrees 59 minutes 02 seconds West 606.36 feet to its Southwest corner, also being the Northwest corner of Area 1 of State Lease No. 14861, as amended, having Coordinates of X = 2,711,646.08 and Y = 119,045.00; thence West 3,570.10 feet to the point of beginning, containing approximately **340.56 acres**, all as more particularly outlined on a plat on file in the Office of Mineral Resources, Department of Natural Resources. All bearings, distances and coordinates are based on Louisiana Coordinate System of 1927, (North or South Zone).

NOTE: The above description of the Tract nominated for lease has been provided and corrected, where required, exclusively by the nomination party. Any mineral lease selected from this Tract and awarded by the Louisiana State Mineral Board shall be without warranty of any kind, either express, implied, or statutory, including, but not limited to, the implied warranties of merchantability and fitness for a particular purpose. Should the mineral lease awarded by the Louisiana State Mineral

Board be subsequently modified, cancelled or abrogated due to the existence of conflicting leases, operating agreements, private claims or other future obligations or conditions which may affect all or any portion of the leased Tract, it shall not relieve the Lessee of the obligation to pay any bonus due thereon to the Louisiana State Mineral Board, nor shall the Louisiana State Mineral Board be obligated to refund any consideration paid by the Lessor prior to such modification, cancellation, or abrogation, including, but not limited to, bonuses, rentals and royalties.

NOTE: The State of Louisiana does hereby reserve, and this lease shall be subject to, the imprescriptible right of surface use in the nature of a servitude in favor of the Department of Natural Resources, including its Offices and Commissions, for the sole purpose of implementing, constructing, servicing and maintaining approved coastal zone management and/or restoration projects. Utilization of any and all rights derived under this lease by the mineral lessee, its agents, successors or assigns, shall not interfere with nor hinder the reasonable surface use by the Department of Natural Resources, its Offices or Commissions, as herein above reserved.

NOTE: It appears, according to our records, that a portion of this Tract is located within the restrictive safety fairway area as set out by the Corps of Engineers, U.S. Army and/or the restrictive anchorage area as set out by the U.S. Coast Guard.

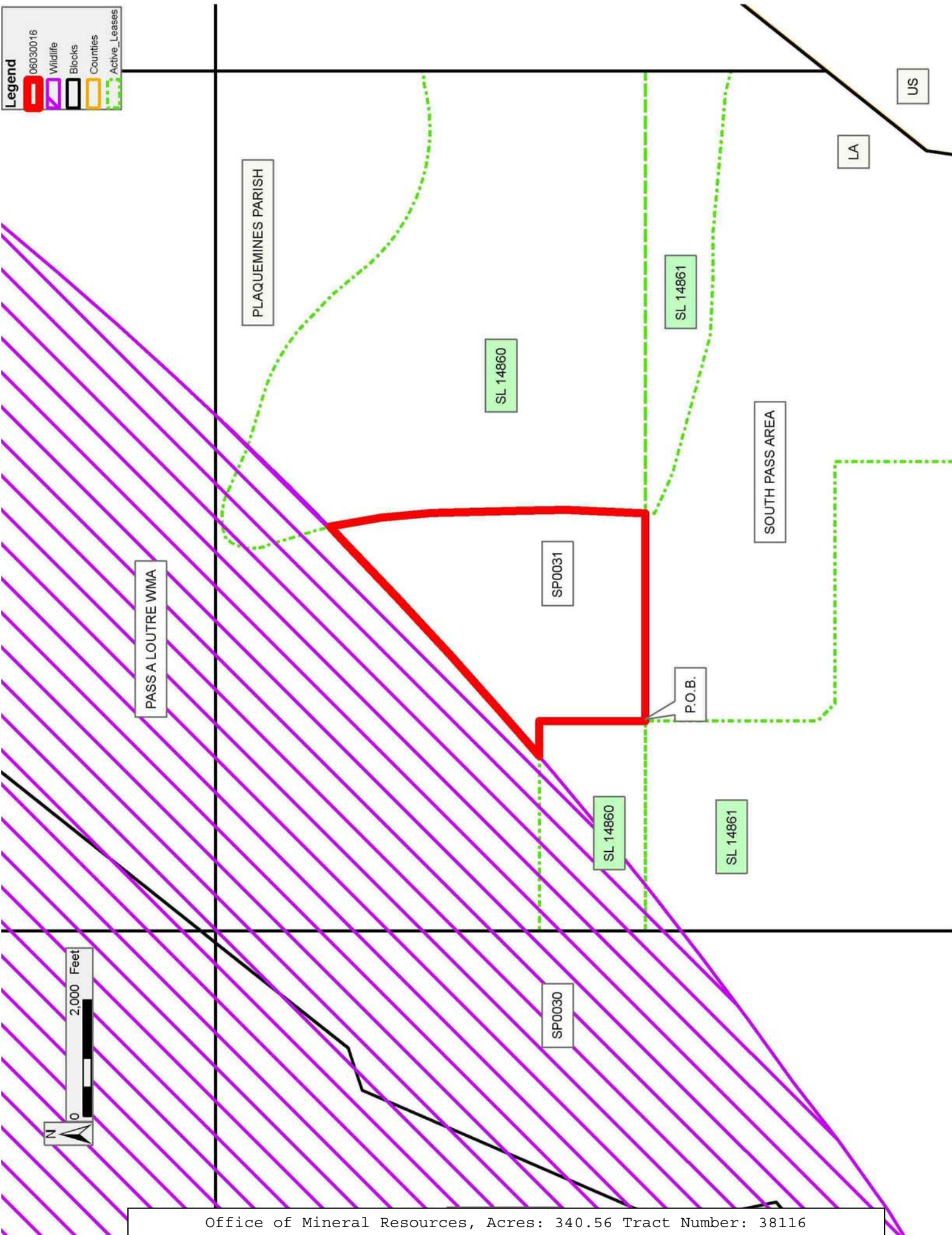
NOTE: The Department of Wildlife and Fisheries has designated certain areas in the coastal waters of the State of Louisiana as Oyster Seed Bed Areas. The exact location of those Seed Bed Areas must be obtained from the Department of Wildlife and Fisheries and any work done under a mineral lease from the State of Louisiana may necessarily be conducted in conformity with the rules and regulations promulgated by the said Department of Wildlife and Fisheries for Oyster Seed Bed Areas.

Applicant: CYPRESS ENERGY CORPORATION

Bidder	Cash Payment	Price/ Acre	Rental	Oil	Gas	Other

Legend

- 06030016
- Wildlife
- Blocks
- Counties
- Active_Leases



TRACT 38117 - Portion of Block 85, West Delta Area, Plaquemines Parish, Louisiana

The beds and bottoms of all water bodies belonging to the State of Louisiana located in Block 85, West Delta Area, together with any present lands formed by accretion to the shoreline or islands formed therein, located in Plaquemines Parish, Louisiana, owned by and not presently under mineral lease as of March 8, 2006, from the State of Louisiana, the geographical area of which is more fully described as follows: Beginning at a point on the East line of Block 85, West Delta Area, having Coordinates of X = 2,595,027.93 and Y = 92,600.00; thence West 5,973.39 feet to a point on the Three Mile Decree line derived from the June 16, 1975 Decree in the United States vs. Louisiana No. 9 Original, having Coordinates of X = 2,589,054.54 and Y = 92,600.00; thence along said Three Mile Decree line the following courses: along an arc to the right with a center of X = 2,607,290 and Y = 93,040 and a radius of 18,240.60 feet to a point having Coordinates of X = 2,589,664 and Y = 97,736; along an arc to the right with a center of X = 2,607,455 and Y = 93,710 and a radius of 18,240.60 feet to a point having Coordinates of X = 2,591,541 and Y = 102,625; and North 29 degrees 15 minutes 32 seconds East 420.78 feet to a point on the North line of said Block 85 having Coordinates of X = 2,591,746.66 and Y = 102,992.10; thence East 3,281.27 feet along the North line of said Block 85 to its Northeast corner having Coordinates of X = 2,595,027.93 and Y = 102,992.10; thence South 10,392.10 feet along the East line of said Block 85 to the point of beginning, containing approximately **1,223.34 acres, LESS AND EXCEPT** that portion thereof, if any, lying seaward of the line three nautical miles from the coast line of Louisiana, as said three mile line has been decreed by the Supreme Court of the United States, as determined by a Special Master appointed therein, in litigation styled **United States v. State of Louisiana et al No. 9 Original**, in 1975, all as more particularly outlined on a plat in the Office of Mineral Resources, Department of Natural Resources. All bearings, distances and coordinates are based on the Louisiana Coordinate System of 1927, (South Zone).

NOTE: The above description of the Tract nominated for lease has been provided and corrected, where required, exclusively by the nomination party. Any mineral lease selected from this Tract and awarded by the Louisiana State Mineral Board shall be without warranty of any kind, either express, implied, or statutory, including, but not limited to, the implied warranties of merchantability and fitness for a particular purpose. Should the mineral lease awarded by the Louisiana State Mineral Board be subsequently modified, cancelled or abrogated due to the existence of conflicting leases, operating agreements, private claims or other future obligations or conditions which may affect all or any portion of the leased Tract, it shall not relieve the Lessee of the obligation to pay any bonus due thereon to the Louisiana State Mineral Board, nor shall the Louisiana State Mineral Board be obligated to refund any consideration paid by the Lessor prior to such modification, cancellation, or abrogation, including, but not limited to, bonuses, rentals and royalties.

NOTE: The State of Louisiana does hereby reserve, and this lease shall be subject to, the imprescriptible right of surface use in the nature of a servitude in favor of the Department of Natural Resources, including its Offices and Commissions, for the sole purpose of implementing, constructing, servicing and maintaining approved coastal zone management and/or restoration projects. Utilization of any and all rights derived under this lease by the mineral lessee, its agents, successors or assigns, shall not interfere with nor hinder the reasonable surface use by the Department of Natural Resources, its Offices or Commissions, as herein above reserved.

Applicant: STEPHEN M. JENKINS, INC.

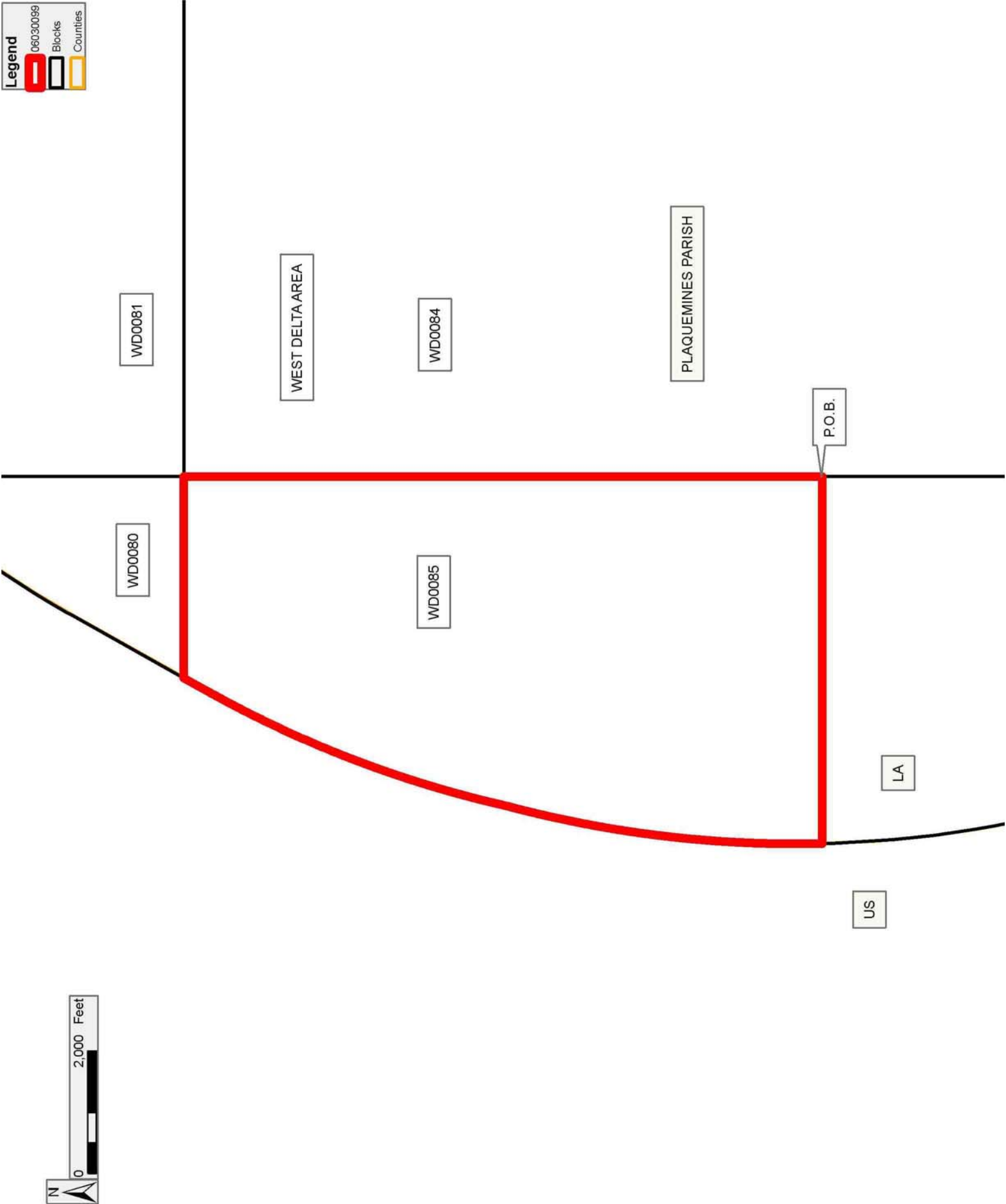
Bidder	Cash Payment	Price/ Acre	Rental	Oil	Gas	Other

Legend

06030099

Blocks

Counties



TRACT 38118 - Portion of Block 41, South Pass Area, and Block 84, West Delta Area, Plaquemines Parish, Louisiana

The beds and bottoms of all water bodies belonging to the State of Louisiana located in Block 41, South Pass Area, and Block 84, West Delta Area, together with any present lands formed by accretion to the shoreline or islands formed therein, located in Plaquemines Parish, Louisiana, owned by and not presently under mineral lease as of March 8, 2006, from the State of Louisiana, the geographical area of which is more fully described as follows: Beginning at the Northwest corner of Block 84, West Delta Area, having Coordinates of X = 2,595,027.93 and Y = 102,992.10; thence East 10,450.00 feet along the North line of said Block 84 to its Northeast corner, said corner also being the Northwest corner of Block 41, South Pass Area, having Coordinates of X = 2,605,477.93 and Y = 102,992.10; thence East 4,300.00 feet along the North line of said Block 41 to a point on the West line of Operating Agreement No. 273 having Coordinates of X = 2,609,777.93 and Y = 102,992.10; thence along the boundary of said Operating Agreement No. 273 the following courses: South 1,141.81 feet to a point having Coordinates of X = 2,609,777.93 and Y = 101,850.29 and East 619.49 feet to the most Northerly Northwest corner of State Lease No. 17193 having Coordinates of X = 2,610,397.42 and Y = 101,850.29; thence along the boundary of said State Lease No. 17193 the following courses: South 29 degrees 01 minutes 30 seconds West 2,925.63 feet to a point having Coordinates of X = 2,608,977.93 and Y = 99,292.10, and South 1,348.10 feet to the Northeast corner of State Lease No. 18128 having Coordinates of X = 2,608,977.93 and Y = 97,944.00; thence West 3,500.00 feet along the North line of said State Lease No. 18128 to its Northwest corner, said corner also being a point on the East line of Operating Agreement No. 232, having Coordinates of X = 2,605,477.93 and Y = 97,944.00; thence along the boundary of said Operating Agreement No. 232 the following courses: North 313.36 feet to a point having Coordinates of X = 2,605,477.93 and Y = 98,257.36, West 8,450.00 feet to a point having Coordinates of X = 2,597,027.93 and Y = 98,257.36 and South 8,907.36 feet to its Southwest corner having Coordinates of X = 2,597,027.93 and Y = 89,350.00; thence West 2,000.00 feet to a point on the West line of said Block 84 having Coordinates of X = 2,595,027.93 and Y = 89,350.00; thence North 13,642.10 feet along the West line of said Block 84 to the point of beginning, containing approximately **2,013.09 acres**, all as more particularly outlined on a plat on file in the Office of Mineral Resources, Department of Natural Resources. All bearings, distances and coordinates are based on Louisiana Coordinate System of 1927, (North or South Zone).

NOTE: The above description of the Tract nominated for lease has been provided and corrected, where required, exclusively by the nomination party. Any mineral lease selected from this Tract and awarded by the Louisiana State Mineral Board shall be without warranty of any kind, either express, implied, or statutory, including, but not limited to, the implied warranties of merchantability and fitness for a particular purpose. Should the mineral lease awarded by the Louisiana State Mineral

Board be subsequently modified, cancelled or abrogated due to the existence of conflicting leases, operating agreements, private claims or other future obligations or conditions which may affect all or any portion of the leased Tract, it shall not relieve the Lessee of the obligation to pay any bonus due thereon to the Louisiana State Mineral Board, nor shall the Louisiana State Mineral Board be obligated to refund any consideration paid by the Lessor prior to such modification, cancellation, or abrogation, including, but not limited to, bonuses, rentals and royalties.

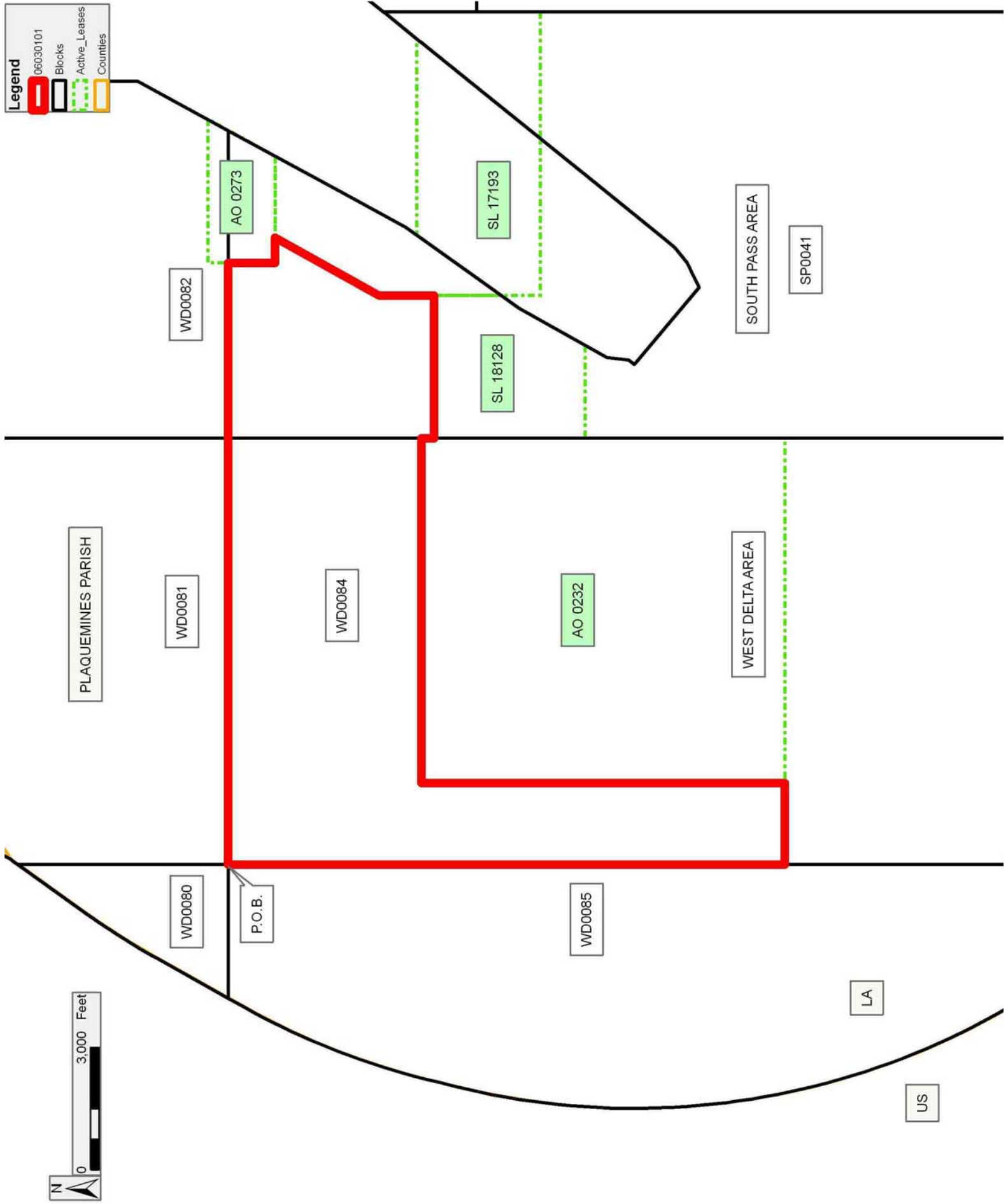
NOTE: The State of Louisiana does hereby reserve, and this lease shall be subject to, the imprescriptible right of surface use in the nature of a servitude in favor of the Department of Natural Resources, including its Offices and Commissions, for the sole purpose of implementing, constructing, servicing and maintaining approved coastal zone management and/or restoration projects. Utilization of any and all rights derived under this lease by the mineral lessee, its agents, successors or assigns, shall not interfere with nor hinder the reasonable surface use by the Department of Natural Resources, its Offices or Commissions, as herein above reserved.

NOTE: It appears, according to our records, that a portion of this Tract is located within the restrictive safety fairway area as set out by the Corps of Engineers, U.S. Army and/or the restrictive anchorage area as set out by the U.S. Coast Guard.

NOTE: The Department of Wildlife and Fisheries has designated certain areas in the coastal waters of the State of Louisiana as Oyster Seed Bed Areas. The exact location of those Seed Bed Areas must be obtained from the Department of Wildlife and Fisheries and any work done under a mineral lease from the State of Louisiana may necessarily be conducted in conformity with the rules and regulations promulgated by the said Department of Wildlife and Fisheries for Oyster Seed Bed Areas.

Applicant: STEPHEN M. JENKINS, INC.

Bidder	Cash Payment	Price/ Acre	Rental	Oil	Gas	Other



TRACT 38119 - Portion of Block 41, South Pass Area, Plaquemines Parish, Louisiana

The beds and bottoms of all water bodies belonging to the State of Louisiana located in Block 41, South Pass Area, together with any present lands formed by accretion to the shoreline or islands formed therein, located in Plaquemines Parish, Louisiana, owned by and not presently under mineral lease as of March 8, 2006, from the State of Louisiana, the geographical area of which is more fully described as follows: Beginning at the Southwest corner of Block 41, South Pass Area, having Coordinates of X = 2,605,477.93 and Y = 82,150.00; thence North 7,200.00 feet along the West line of said Block 41 to the Southeast corner of Operating Agreement No. 232 having Coordinates of X = 2,605,477.93 and Y = 89,350.00; thence North 4,894.00 feet along the East line of said Operating Agreement No. 232 to the Southwest corner of State Lease No. 18128 having Coordinates of X = 2,605,477.93 and Y = 94,244.00; thence East 2,276.21 feet along the South line of said State Lease No. 18128 to its Southeast corner, said corner also being a point on the West boundary line of State Lease No. 17381, having Coordinates of X = 2,607,754.14 and Y = 94,244.00; thence along the boundary of said State Lease No. 17381 the following courses: South 29 degrees 15 minutes 24 seconds West 612.08 feet to a point having Coordinates of X = 2,607,455.00 and Y = 93,710.00; South 05 degrees 52 minutes 11 seconds West 537.82 feet to a point having Coordinates of X = 2,607,400.00 and Y = 93,175.00; South 39 degrees 10 minutes 25 seconds West 174.14 feet to a point having Coordinates of X = 2,607,290.00 and Y = 93,040.00; and South 49 degrees 50 minutes 19 seconds East 2,473.08 feet to its most Southerly Southeast corner having Coordinates of X = 2,609,180.00 and Y = 91,445.00; thence South 201.00 feet to a point on the North line of State Lease No. 18427 having Coordinates of X = 2,609,180.00 and Y = 91,244.00; thence along the boundary of said State Lease No. 18427 the following courses: West 2,066.57 feet to a point having Coordinates of X = 2,607,113.43 and Y = 91,244.00, and South 7,097.66 feet to its Southwest corner, said corner also being the Northwest corner of State Lease No. 15238, as amended, having Coordinates of X = 2,607,113.43 and Y = 84,146.34; thence South 43 degrees 48 minutes 08 seconds East 2,766.04 feet along the West line of said State Lease No. 15238 to its Southwest corner, said corner also being a point on the South line of said Block 41, having Coordinates of X = 2,609,028.00 and Y = 82,150.00; thence West 3,550.07 feet along the South line of said Block 41 to the point of beginning, containing approximately **559.15 acres**, all as more particularly outlined on a plat on file in the Office of Mineral Resources, Department of Natural Resources. All bearings, distances and coordinates are based on Louisiana Coordinate System of 1927, (North or South Zone).

NOTE: The above description of the Tract nominated for lease has been provided and corrected, where required, exclusively by the nomination party. Any mineral lease selected from this Tract and awarded by the Louisiana State Mineral Board shall be without warranty of any kind, either express, implied, or statutory, including, but not limited to, the

implied warranties of merchantability and fitness for a particular purpose. Should the mineral lease awarded by the Louisiana State Mineral Board be subsequently modified, cancelled or abrogated due to the existence of conflicting leases, operating agreements, private claims or other future obligations or conditions which may affect all or any portion of the leased Tract, it shall not relieve the Lessee of the obligation to pay any bonus due thereon to the Louisiana State Mineral Board, nor shall the Louisiana State Mineral Board be obligated to refund any consideration paid by the Lessor prior to such modification, cancellation, or abrogation, including, but not limited to, bonuses, rentals and royalties.

NOTE: The State of Louisiana does hereby reserve, and this lease shall be subject to, the imprescriptible right of surface use in the nature of a servitude in favor of the Department of Natural Resources, including its Offices and Commissions, for the sole purpose of implementing, constructing, servicing and maintaining approved coastal zone management and/or restoration projects. Utilization of any and all rights derived under this lease by the mineral lessee, its agents, successors or assigns, shall not interfere with nor hinder the reasonable surface use by the Department of Natural Resources, its Offices or Commissions, as herein above reserved.

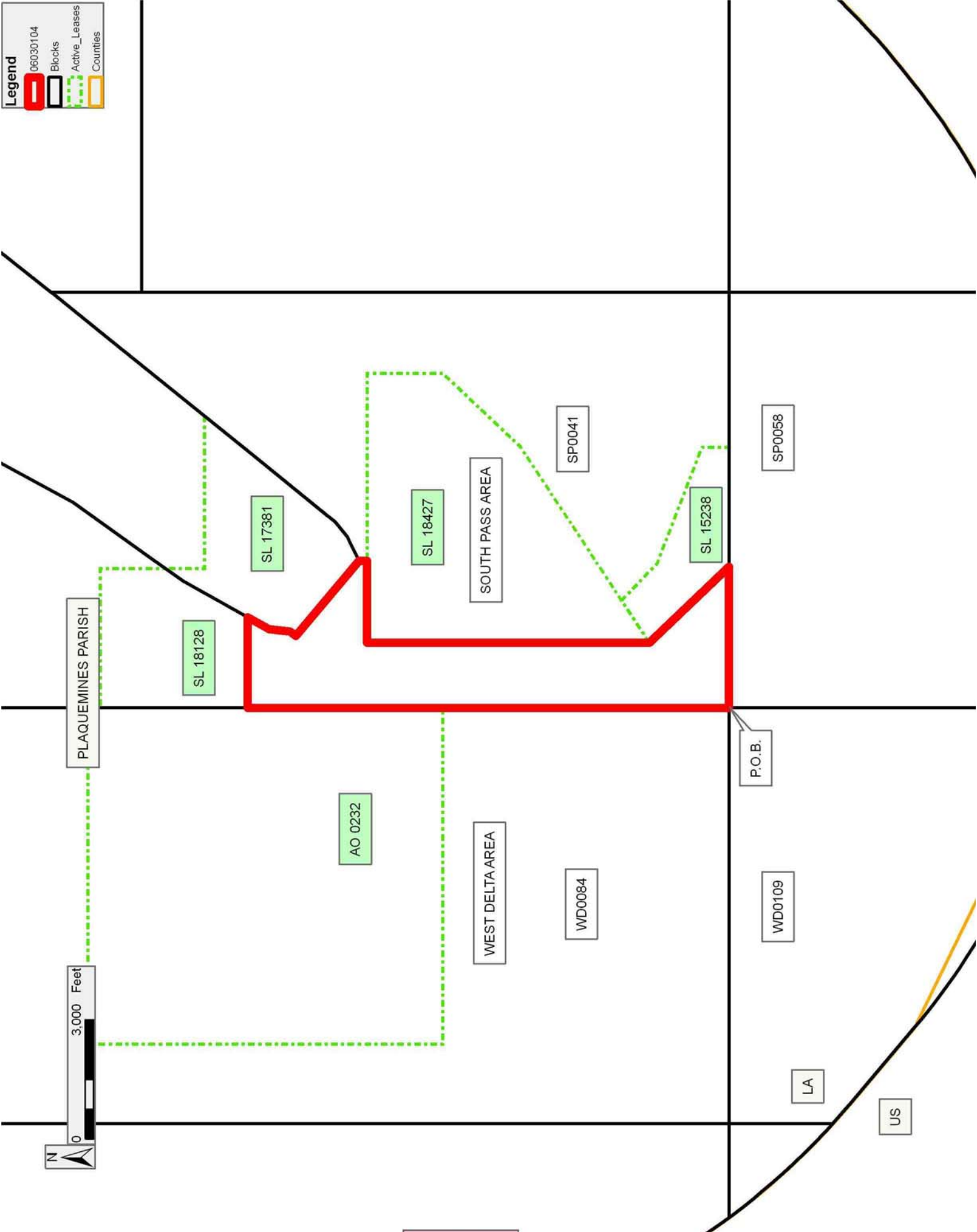
NOTE: It appears, according to our records, that a portion of this Tract is located within the restrictive safety fairway area as set out by the Corps of Engineers, U.S. Army and/or the restrictive anchorage area as set out by the U.S. Coast Guard.

Applicant: STEPHEN M. JENKINS, INC.

Bidder	Cash Payment	Price/ Acre	Rental	Oil	Gas	Other

Legend

- 06030104
- Blocks
- Active_Leases
- Counties



TRACT 38120 - Portion of Block 85, West Delta Area, Plaquemines Parish, Louisiana

The beds and bottoms of all water bodies belonging to the State of Louisiana located in Block 85, West Delta Area, together with any present lands formed by accretion to the shoreline or islands formed therein, located in Plaquemines Parish, Louisiana, owned by and not presently under mineral lease as of March 8, 2006, from the State of Louisiana, the geographical area of which is more fully described as follows: Beginning at a point on the East line of Block 85, West Delta Area, having Coordinates of X = 2,595,027.93 and Y = 92,600.00; thence South 10,450.00 feet along the East line of said Block 85 to its Southeast corner having Coordinates of X = 2,595,027.93 and Y = 82,150.00; thence West 2,371.02 feet along the South line of said Block 85 to a point on the Three Mile Decree line derived from the June 16, 1975 Decree in the United States vs. Louisiana No. 9 Original, having Coordinates of X = 2,592,656.91 and Y = 82,150.00; thence along an arc to the right with a center of X = 2,607,290 and Y = 93,040 and a radius of 18,240.60 feet along said Three Mile Decree line to a point having Coordinates of X = 2,589,054.54 and Y = 92,600.00; thence East 5,973.39 feet to the point of beginning, containing approximately **1,146.65 acres, LESS AND EXCEPT** that portion thereof, if any, lying seaward of the line three nautical miles from the coast line of Louisiana, as said three mile line has been decreed by the Supreme Court of the United States, as determined by a Special Master appointed therein, in litigation styled **United States v. State of Louisiana et al No. 9 Original**, in 1975, all as more particularly outlined on a plat in the Office of Mineral Resources, Department of Natural Resources. All bearings, distances and coordinates are based on the Louisiana Coordinate System of 1927, (South Zone).

NOTE: The above description of the Tract nominated for lease has been provided and corrected, where required, exclusively by the nomination party. Any mineral lease selected from this Tract and awarded by the Louisiana State Mineral Board shall be without warranty of any kind, either express, implied, or statutory, including, but not limited to, the implied warranties of merchantability and fitness for a particular purpose. Should the mineral lease awarded by the Louisiana State Mineral Board be subsequently modified, cancelled or abrogated due to the existence of conflicting leases, operating agreements, private claims or other future obligations or conditions which may affect all or any portion of the leased Tract, it shall not relieve the Lessee of the obligation to pay any bonus due thereon to the Louisiana State Mineral Board, nor shall the Louisiana State Mineral Board be obligated to refund any consideration paid by the Lessor prior to such modification, cancellation, or abrogation, including, but not limited to, bonuses, rentals and royalties.

NOTE: The State of Louisiana does hereby reserve, and this lease shall be subject to, the imprescriptible right of surface use in the nature of a servitude in favor of the Department of Natural Resources, including its Offices and Commissions, for the sole purpose of implementing,

constructing, servicing and maintaining approved coastal zone management and/or restoration projects. Utilization of any and all rights derived under this lease by the mineral lessee, its agents, successors or assigns, shall not interfere with nor hinder the reasonable surface use by the Department of Natural Resources, its Offices or Commissions, as herein above reserved.

Applicant: STEPHEN M. JENKINS, INC.

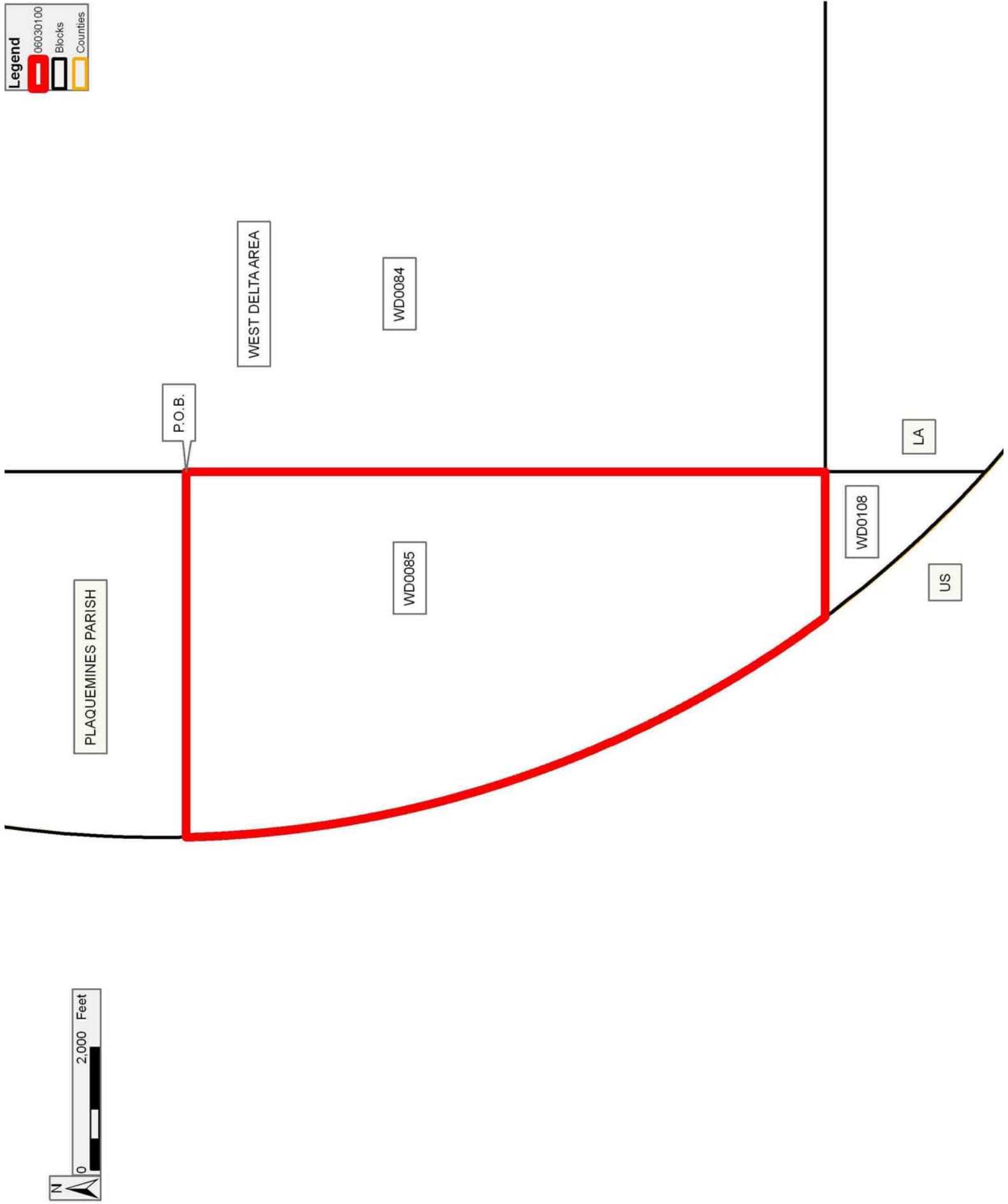
Bidder	Cash Payment	Price/ Acre	Rental	Oil	Gas	Other

Legend

06030100

Blocks

Counties



TRACT 38121 - Portion of Block 84, West Delta Area, Plaquemines Parish, Louisiana

The beds and bottoms of all water bodies belonging to the State of Louisiana located in Block 84, West Delta Area, together with any present lands formed by accretion to the shoreline or islands formed therein, located in Plaquemines Parish, Louisiana, owned by and not presently under mineral lease as of March 8, 2006, from the State of Louisiana, the geographical area of which is more fully described as follows: Beginning at the Southeast corner of Block 84, West Delta Area, having Coordinates of X = 2,605,477.93 and Y = 82,150.00; thence West 10,450.00 feet along the South line of said Block 84 to its Southwest corner having Coordinates of X = 2,595,027.93 and Y = 82,150.00; thence North 7,200.00 feet along the West line of said Block 84 to a point having Coordinates of X = 2,595,027.93 and Y = 89,350.00; thence East 2,000.00 feet to the Southwest corner of Operating Agreement No. 232 having Coordinates of X = 2,597,027.93 and Y = 89,350.00; thence East 8,450.00 feet along the South line of said Operating Agreement No. 232 to its Southeast corner, said corner also being a point on the East line of said Block 84, having Coordinates of X = 2,605,477.93 and Y = 89,350.00; thence South 7,200.00 feet along the East line of said Block 84 to the point of beginning, containing approximately **1,727.27 acres**, all as more particularly outlined on a plat on file in the Office of Mineral Resources, Department of Natural Resources. All bearings, distances and coordinates are based on Louisiana Coordinate System of 1927, (North or South Zone).

NOTE: The above description of the Tract nominated for lease has been provided and corrected, where required, exclusively by the nomination party. Any mineral lease selected from this Tract and awarded by the Louisiana State Mineral Board shall be without warranty of any kind, either express, implied, or statutory, including, but not limited to, the implied warranties of merchantability and fitness for a particular purpose. Should the mineral lease awarded by the Louisiana State Mineral Board be subsequently modified, cancelled or abrogated due to the existence of conflicting leases, operating agreements, private claims or other future obligations or conditions which may affect all or any portion of the leased Tract, it shall not relieve the Lessee of the obligation to pay any bonus due thereon to the Louisiana State Mineral Board, nor shall the Louisiana State Mineral Board be obligated to refund any consideration paid by the Lessor prior to such modification, cancellation, or abrogation, including, but not limited to, bonuses, rentals and royalties.

NOTE: The State of Louisiana does hereby reserve, and this lease shall be subject to, the imprescriptible right of surface use in the nature of a servitude in favor of the Department of Natural Resources, including its Offices and Commissions, for the sole purpose of implementing, constructing, servicing and maintaining approved coastal zone management and/or restoration projects. Utilization of any and all rights derived under this lease by the mineral lessee, its agents, successors or assigns, shall not interfere with nor hinder the reasonable surface use by the

Department of Natural Resources, its Offices or Commissions, as herein above reserved.

NOTE: It appears, according to our records, that a portion of this Tract is located within the restrictive safety fairway area as set out by the Corps of Engineers, U.S. Army and/or the restrictive anchorage area as set out by the U.S. Coast Guard.

Applicant: STEPHEN M. JENKINS, INC.

Bidder	Cash Payment	Price/ Acre	Rental	Oil	Gas	Other

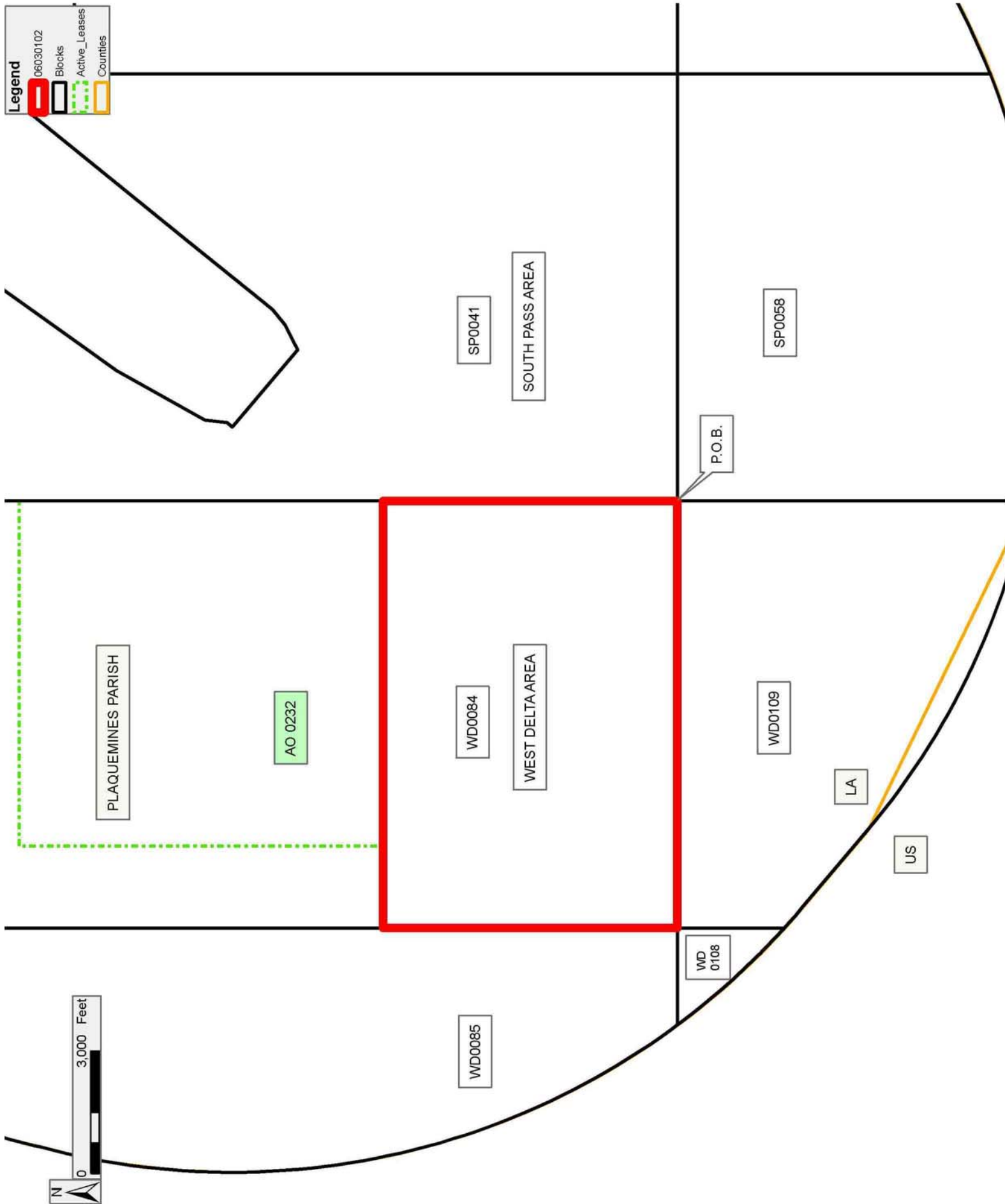
Legend

06030102

Blocks

Active_Leases

Counties



TRACT 38122 - Portion of Blocks 41, and 58, South Pass Area, Plaquemines Parish, Louisiana

The beds and bottoms of all water bodies belonging to the State of Louisiana located in Blocks 41, and 58, South Pass Area, together with any present lands formed by accretion to the shoreline or islands formed therein, located in Plaquemines Parish, Louisiana, owned by and not presently under mineral lease as of March 8, 2006, from the State of Louisiana, the geographical area of which is more fully described as follows: Beginning at the Northwest corner of Block 58, South Pass Area, having Coordinates of X = 2,605,477.93 and Y = 82,150.00; thence East 3,550.07 feet along the North line of said Block 58 to the Southwest corner of State Lease No. 15238, as amended, having Coordinates of X = 2,609,028.00 and Y = 82,150.00; thence along the boundary of said State Lease No. 15238, as amended, the following courses: East 3,000.00 feet to a point having Coordinates of X = 2,612,028.00 and Y = 82,150.00, and North 674.15 feet to its most Easterly Northeast corner, said corner also being the Southeast corner of State Lease No. 13262, as amended, having Coordinates of X = 2,612,028.00 and Y = 82,824.15; thence North 925.85 feet along the East line of said State Lease No. 13262, as amended, to the Southwest corner of State Lease No. 18428 having Coordinates of X = 2,612,028.00 and Y = 83,750.00; thence East 2,400.00 feet along the South line of said State Lease No. 18428 to a point on the West boundary line of State Lease No. 18129 having Coordinates of X = 2,614,428.00 and Y = 83,750.00; thence along the boundary of said State Lease No. 18129 the following courses: South 1,600.00 feet to a point having Coordinates of X = 2,614,428.00 and Y = 82,150.00, and East 1,500.00 feet to its Southeast corner, said corner also being the Northwest corner of State Lease No. 18031, having Coordinates of X = 2,615,928.00 and Y = 82,150.00; thence South 2,526.08 feet along the West line of said State Lease No. 18031 to its Southwest corner, said corner also being the Northeast corner of State Lease No. 16500, as amended, having Coordinates of X = 2,615,928.00 and Y = 79,623.92; thence along the boundary of said State Lease No. 16500, as amended, the following courses: West 4,324.00 feet to a point having Coordinates of X = 2,611,604.00 and Y = 79,623.92, South 4,030.24 feet to a point having Coordinates of X = 2,611,604.00 and Y = 75,593.68 and South 85 degrees 36 minutes 09 seconds East 4,336.77 feet to its Southeast corner, said corner also being the Southwest corner of State Lease No. 16501, and a point on the East line of said Block 58, having Coordinates of X = 2,615,928.00 and Y = 75,261.15; thence South 762.64 feet along the East line of said Block 58 to a point on the Three Mile Decree line derived from the June 16, 1975 Decree in the United States vs. Louisiana No. 9 Original, having Coordinates of X = 2,615,928.00 and Y = 74,498.50; thence along an arc to the right with a center of X = 2,609,180.11 and Y = 91,445.06 and a radius of 18,240.60 feet to a point on the West line of said Block 58 having Coordinates of X = 2,605,477.93 and Y = 73,584.03; thence North 8,565.89 feet along the West line of said Block 58 to the point of beginning, containing approximately **1,741.07 acres, LESS AND EXCEPT** that portion thereof, if any, lying seaward of the line three nautical miles from the coast line of Louisiana, as said three mile line

has been decreed by the Supreme Court of the United States, as determined by a Special Master appointed therein, in litigation styled **United States v. State of Louisiana et al No. 9 Original**, in 1975, all as more particularly outlined on a plat in the Office of Mineral Resources, Department of Natural Resources. All bearings, distances and coordinates are based on the Louisiana Coordinate System of 1927, (South Zone).

NOTE: The above description of the Tract nominated for lease has been provided and corrected, where required, exclusively by the nomination party. Any mineral lease selected from this Tract and awarded by the Louisiana State Mineral Board shall be without warranty of any kind, either express, implied, or statutory, including, but not limited to, the implied warranties of merchantability and fitness for a particular purpose. Should the mineral lease awarded by the Louisiana State Mineral Board be subsequently modified, cancelled or abrogated due to the existence of conflicting leases, operating agreements, private claims or other future obligations or conditions which may affect all or any portion of the leased Tract, it shall not relieve the Lessee of the obligation to pay any bonus due thereon to the Louisiana State Mineral Board, nor shall the Louisiana State Mineral Board be obligated to refund any consideration paid by the Lessor prior to such modification, cancellation, or abrogation, including, but not limited to, bonuses, rentals and royalties.

NOTE: The State of Louisiana does hereby reserve, and this lease shall be subject to, the imprescriptible right of surface use in the nature of a servitude in favor of the Department of Natural Resources, including its Offices and Commissions, for the sole purpose of implementing, constructing, servicing and maintaining approved coastal zone management and/or restoration projects. Utilization of any and all rights derived under this lease by the mineral lessee, its agents, successors or assigns, shall not interfere with nor hinder the reasonable surface use by the Department of Natural Resources, its Offices or Commissions, as herein above reserved.

NOTE: It appears, according to our records, that a portion of this Tract is located within the restrictive safety fairway area as set out by the Corps of Engineers, U.S. Army and/or the restrictive anchorage area as set out by the U.S. Coast Guard.

Applicant: STEPHEN M. JENKINS, INC.

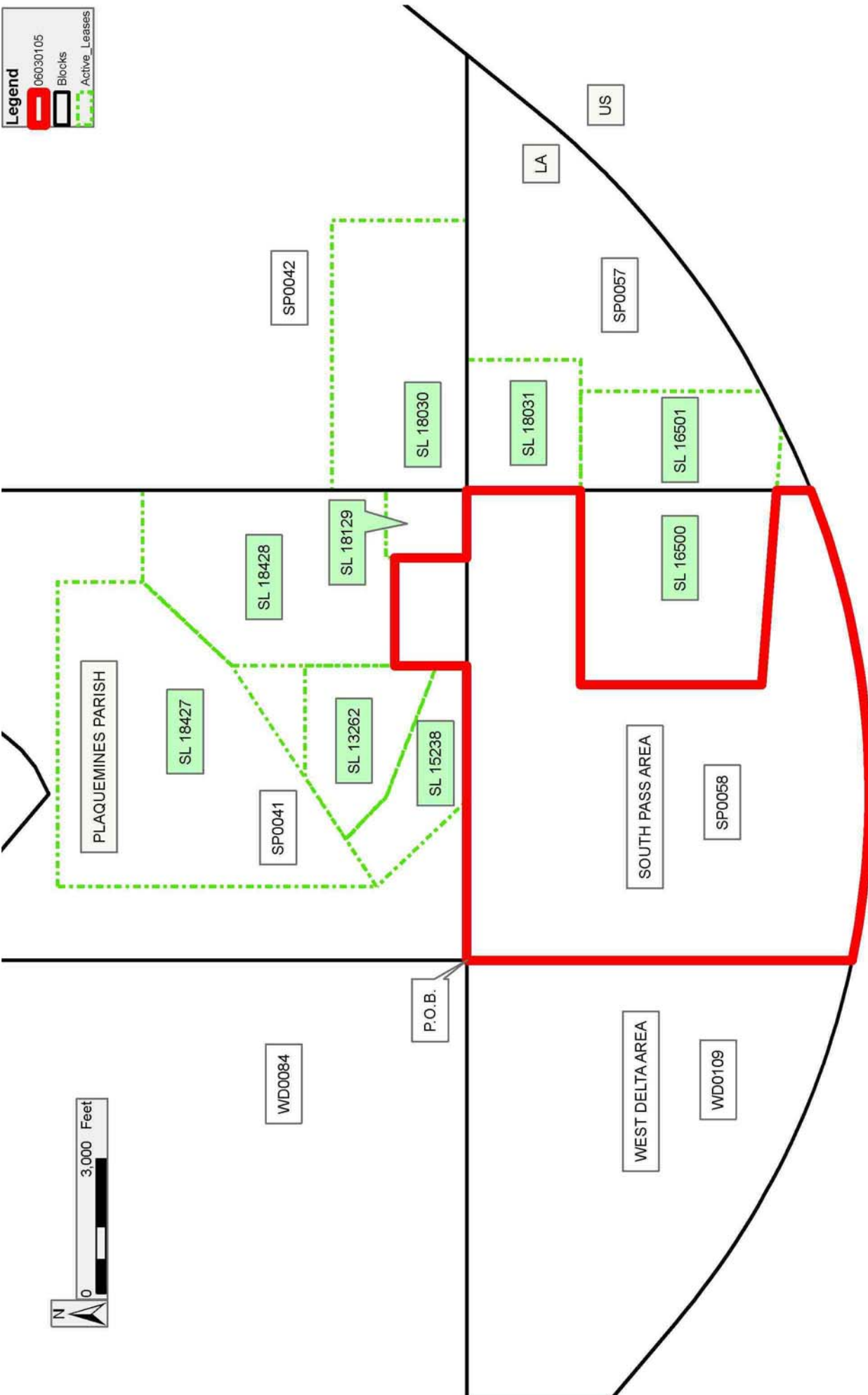
Bidder	Cash Payment	Price/ Acre	Rental	Oil	Gas	Other

Legend

06030105

Blocks

Active_Leases



TRACT 38123 - Portion of Blocks 108, and 109, West Delta Area, Plaquemines Parish, Louisiana

The beds and bottoms of all water bodies belonging to the State of Louisiana located in Blocks 108, and 109, West Delta Area, together with any present lands formed by accretion to the shoreline or islands formed therein, located in Plaquemines Parish, Louisiana, owned by and not presently under mineral lease as of March 8, 2006, from the State of Louisiana, the geographical area of which is more fully described as follows: Beginning at the Northeast corner of Block 109, West Delta Area, having Coordinates of X = 2,605,477.93 and Y = 82,150.00; thence South 8,565.97 feet along the East line of said Block 109 to a point on the Three Mile Decree line derived from the June 16, 1975 Decree in the United States vs. Louisiana No. 9 Original, having Coordinates of X = 2,605,477.93 and Y = 73,584.03; thence along said Three Mile Decree line the following courses: along an arc to the right with a center of X = 2,609,180 and Y = 91,445 and a radius of 18,240.60 feet to a point having Coordinates of X = 2,597,416 and Y = 77,505; North 49 degrees 50 minutes 19 seconds West 2,473.08 feet to a point having Coordinates of X = 2,595,526 and Y = 79,100; along an arc to the right with a center of X = 2,607,288 and Y = 93,042 and a radius of 18,240.60 feet to a point on the common boundary line between said Block 109 and Block 108, West Delta Area, having Coordinates of X = 2,595,027.93 and Y = 79,535.88; and along an arc to the right with a center of X = 2,607,290 and Y = 93,040 and a radius of 18,240.60 feet to a point on the North line of said Block 108 having Coordinates of X = 2,592,656.91 and Y = 82,150.00; thence East 2,371.02 feet along the North line of said Block 108 to its Northeast corner, said corner also being the Northwest corner of said Block 109, having Coordinates of X = 2,595,027.93 and Y = 82,150.00; thence East 10,450.00 feet along the North line of said Block 109 to the point of beginning, containing approximately **1,574.60 acres, LESS AND EXCEPT** that portion thereof, if any, lying seaward of the line three nautical miles from the coast line of Louisiana, as said three mile line has been decreed by the Supreme Court of the United States, as determined by a Special Master appointed therein, in litigation styled **United States v. State of Louisiana et al No. 9 Original**, in 1975, all as more particularly outlined on a plat in the Office of Mineral Resources, Department of Natural Resources. All bearings, distances and coordinates are based on the Louisiana Coordinate System of 1927, (South Zone).

NOTE: The above description of the Tract nominated for lease has been provided and corrected, where required, exclusively by the nomination party. Any mineral lease selected from this Tract and awarded by the Louisiana State Mineral Board shall be without warranty of any kind, either express, implied, or statutory, including, but not limited to, the implied warranties of merchantability and fitness for a particular purpose. Should the mineral lease awarded by the Louisiana State Mineral Board be subsequently modified, cancelled or abrogated due to the existence of conflicting leases, operating agreements, private claims or other future obligations or conditions which may affect all or any portion

of the leased Tract, it shall not relieve the Lessee of the obligation to pay any bonus due thereon to the Louisiana State Mineral Board, nor shall the Louisiana State Mineral Board be obligated to refund any consideration paid by the Lessor prior to such modification, cancellation, or abrogation, including, but not limited to, bonuses, rentals and royalties.

NOTE: The State of Louisiana does hereby reserve, and this lease shall be subject to, the imprescriptible right of surface use in the nature of a servitude in favor of the Department of Natural Resources, including its Offices and Commissions, for the sole purpose of implementing, constructing, servicing and maintaining approved coastal zone management and/or restoration projects. Utilization of any and all rights derived under this lease by the mineral lessee, its agents, successors or assigns, shall not interfere with nor hinder the reasonable surface use by the Department of Natural Resources, its Offices or Commissions, as herein above reserved.

NOTE: It appears, according to our records, that a portion of this Tract is located within the restrictive safety fairway area as set out by the Corps of Engineers, U.S. Army and/or the restrictive anchorage area as set out by the U.S. Coast Guard.

Applicant: STEPHEN M. JENKINS, INC.

Bidder	Cash Payment	Price/ Acre	Rental	Oil	Gas	Other

