

TRACT 36183 - Portion of Block 46, Breton Sound Area, Plaquemines Parish, Louisiana

All of the lands now or formerly constituting the beds and bottoms of all water bodies of every nature and description the title of which vests in the State of Louisiana, together with all islands arising therein and other lands formed by accretion or by reliction, where allowed by law, excepting tax adjudicated lands, and not presently under mineral lease on March 10, 2004, situated in Plaquemines Parish, Louisiana, and more particularly described as follows: Beginning at a point having Coordinates of X = 2,664,850.00 and Y = 307,580.00, said point being the Northwest corner of Block 46, Breton Sound Area; thence East 14,750.00 feet on and along the North line of said Block 46, to a point having Coordinates of X = 2,679,600.00 and Y = 307,580.00, said point being the Northeast corner of said Block 46; thence South 6,350.00 feet on and along the East line of said Block 46, to a point having Coordinates of X = 2,679,600.00 and Y = 301,230.00, said point being on the Northern boundary of State Lease No. 17689; thence on and along said Northern boundary of said State Lease No. 17689, and on and along the Eastern, Northern and Western boundaries of State Lease No. 16893, the following courses and distances, to wit: West 2,361.55 feet to a point having Coordinates of X = 2,677,238.45 and Y = 301,230.00; North 33 degrees 14 minutes 29 seconds East 11.96 feet to a point having Coordinates of X = 2,677,245.00 and Y = 301,240.00; North 38 degrees 39 minutes 35 seconds West 3,745.83 feet to a point having Coordinates of X = 2,674,905.00 and Y = 304,165.00; South 40 degrees 31 minutes 58 seconds West 4,123.82 feet to a point having Coordinates of X = 2,672,225.00 and Y = 301,030.76; and South 825.76 feet to a point having Coordinates of X = 2,672,225.00 and Y = 300,205.00; thence West 7,375.00 feet to a point having Coordinates of X = 2,664,850.00 and Y = 300,205.00, said point being on the West line of said Block 46; thence North 7,375.00 feet on and along said West line of said Block 46, to the point of beginning, containing approximately **2,160.48 acres**, all as more particularly outlined on a plat on file in the Office of Mineral Resources, Department of Natural Resources. All bearings, distances and coordinates are based on Louisiana Coordinate System of 1927, (North or South Zone), where applicable.

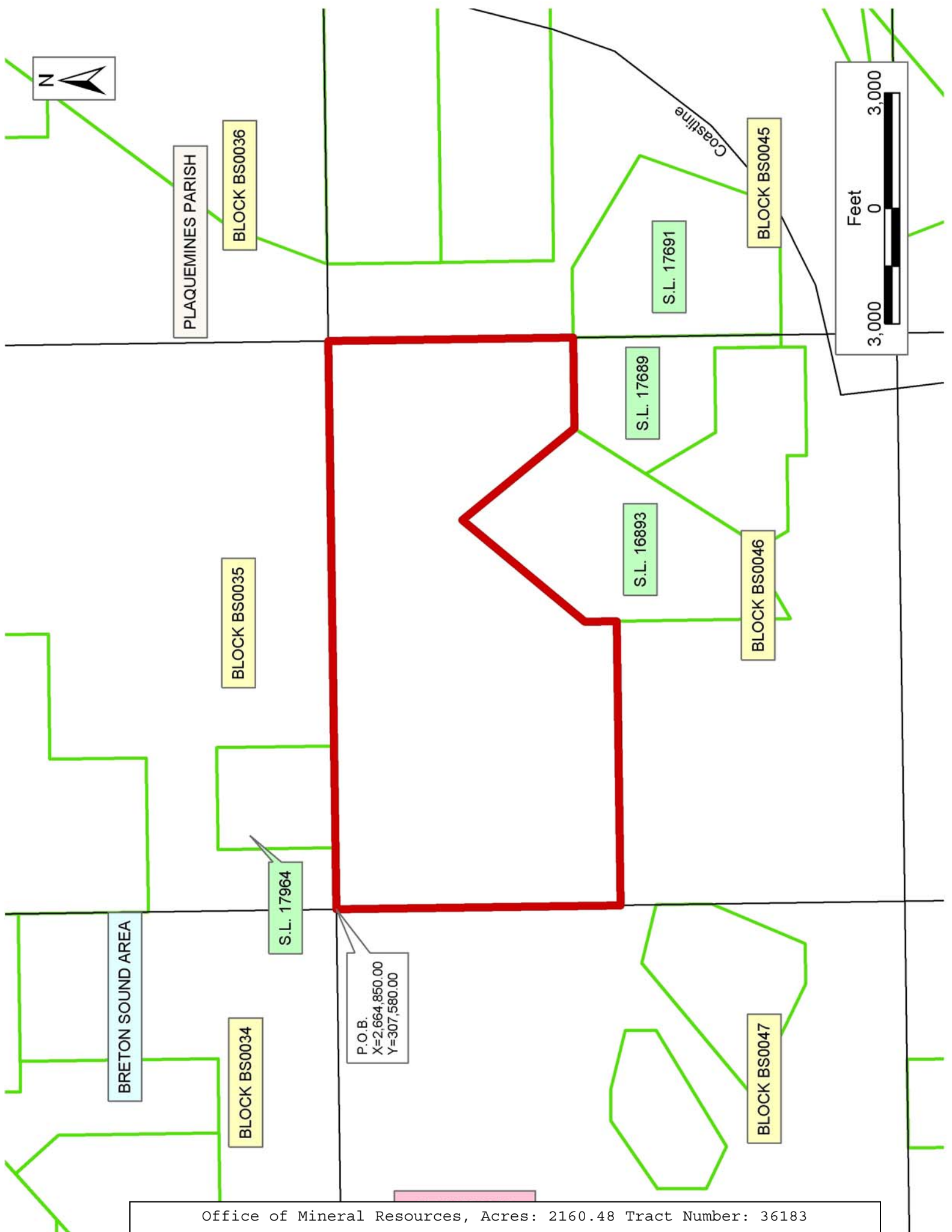
NOTE: The above description of the Tract nominated for lease has been provided and corrected, where required, exclusively by the nomination party. Any mineral lease selected from this Tract and awarded by the Louisiana State Mineral Board shall be without warranty of any kind, either express, implied, or statutory, including, but not limited to, the implied warranties of merchantability and fitness for a particular purpose. Should the mineral lease awarded by the Louisiana State Mineral Board be subsequently modified, cancelled or abrogated due to the existence of conflicting leases, operating agreements, private claims or other future obligations or conditions which may affect all or any portion of the leased Tract, it shall not relieve the Lessee of the obligation to pay any bonus due thereon to the Louisiana State Mineral Board, nor shall the Louisiana State Mineral Board be obligated to refund any consideration

paid by the Lessor prior to such modification, cancellation, or abrogation, including, but not limited to, bonuses, rentals and royalties.

NOTE: The State of Louisiana does hereby reserve, and this lease shall be subject to, the imprescriptible right of surface use in the nature of a servitude in favor of the Department of Natural Resources, including its Offices and Commissions, for the sole purpose of implementing, constructing, servicing and maintaining approved coastal zone management and/or restoration projects. Utilization of any and all rights derived under this lease by the mineral lessee, its agents, successors or assigns, shall not interfere with nor hinder the reasonable surface use by the Department of Natural Resources, its Offices or Commissions, as herein above reserved.

Applicant: Robert A. Schroeder, Inc.

Bidder	Cash Payment	Price/ Acre	Rental	Oil	Gas	Other



TRACT 36184 - Portion of Block 48, Breton Sound Area, Plaquemines Parish, Louisiana

All of the lands now or formerly constituting the beds and bottoms of all water bodies of every nature and description the title of which vests in the State of Louisiana, together with all islands arising therein and other lands formed by accretion or by reliction, where allowed by law, excepting tax adjudicated lands, and not presently under mineral lease on March 10, 2004, situated in Plaquemines Parish, Louisiana, and more particularly described as follows: Beginning at a point having Coordinates of X = 2,635,350.00 and Y = 292,830.00, said point being the Southwest corner of Block 48, Breton Sound Area; Thence North 7,375.00 feet along the West line of said Block 48 to a point having Coordinates of X = 2,635,350.00 and Y = 300,205.00; Thence East 14,750.00 feet to a point having Coordinates of X = 2,650,100.00 and Y = 300,205.00, said point being on the East line of said Block 48; Thence South 7,375.00 feet along the East line of said Block 48 to a point having Coordinates of X = 2,650,100.00 and Y = 292,830.00, said point being the Southeast corner of said Block 48; Thence West 7,419.00 feet along the South line of said Block 48 to a point having Coordinates of X = 2,642,681.00 and Y = 292,830.00, said point being the Southeast corner of State Lease No. 17296; Thence along the Eastern, Northern and Western boundaries of said State Lease No. 17296 the following courses and distances, to wit: North 1,080.00 feet to a point having Coordinates of X = 2,642,681.00 and Y = 293,910.00; West 3,525.00 feet to a point having Coordinates of X = 2,639,156.00 and Y = 293,910.00; and South 1,080.00 feet to a point having Coordinates of X = 2,639,156.00 and Y = 292,830.00, said point being on the South line of said Block 48; Thence West 520.00 feet along the South line of said Block 48 to a point having Coordinates of X = 2,638,636.00 and Y = 292,830.00, said point being the Southeast corner of State Lease No. 17295; Thence along the Eastern, Northern and Western boundaries of said State Lease No. 17295 the following courses and distances, to wit: North 1,822.00 feet to a point having Coordinates of X = 2,638,636.00 and Y = 294,652.00; West 2,485.00 feet to a point having Coordinates of X = 2,636,151.00 and Y = 294,652.00; and South 1,822.00 feet to a point having Coordinates of X = 2,636,151.00 and Y = 292,830.00, said point being on the South line of said Block 48; Thence West 801.00 feet along the South line of said Block 48 to the point of beginning, containing approximately **2,305.94 acres**, all as more particularly outlined on a plat on file in the Office of Mineral Resources, Department of Natural Resources. All bearings, distances and coordinates are based on Louisiana Coordinate System of 1927, (North or South Zone), where applicable.

NOTE: The above description of the Tract nominated for lease has been provided and corrected, where required, exclusively by the nomination party. Any mineral lease selected from this Tract and awarded by the Louisiana State Mineral Board shall be without warranty of any kind, either express, implied, or statutory, including, but not limited to, the implied warranties of merchantability and fitness for a particular purpose. Should the mineral lease awarded by the Louisiana State Mineral

Board be subsequently modified, cancelled or abrogated due to the existence of conflicting leases, operating agreements, private claims or other future obligations or conditions which may affect all or any portion of the leased Tract, it shall not relieve the Lessee of the obligation to pay any bonus due thereon to the Louisiana State Mineral Board, nor shall the Louisiana State Mineral Board be obligated to refund any consideration paid by the Lessor prior to such modification, cancellation, or abrogation, including, but not limited to, bonuses, rentals and royalties.

NOTE: The State of Louisiana does hereby reserve, and this lease shall be subject to, the imprescriptible right of surface use in the nature of a servitude in favor of the Department of Natural Resources, including its Offices and Commissions, for the sole purpose of implementing, constructing, servicing and maintaining approved coastal zone management and/or restoration projects. Utilization of any and all rights derived under this lease by the mineral lessee, its agents, successors or assigns, shall not interfere with nor hinder the reasonable surface use by the Department of Natural Resources, its Offices or Commissions, as herein above reserved.

Applicant: Robert A. Schroeder, Inc.

Bidder	Cash Payment	Price/ Acre	Rental	Oil	Gas	Other



BRETON SOUND AREA

BLOCK BS0047

PLAQUEMINES PARISH

BLOCK BS0050



BLOCK BS0048

BLOCK BS0049

S.L. 17296

S.L. 17241

S.L. 17242

S.L. 17295

S.L. 12002

P.O.B.
X=2,635,350.00
Y=292,830.00

MAIN PASS
AREA, REVISED

BLOCK MP0031

BLOCK MP0036

TRACT 36185 - Portion of Block 49, Breton Sound Area, Plaquemines Parish, Louisiana

All of the lands now or formerly constituting the beds and bottoms of all water bodies of every nature and description the title of which vests in the State of Louisiana, together with all islands arising therein and other lands formed by accretion or by reliction, where allowed by law, excepting tax adjudicated lands, and not presently under mineral lease on March 10, 2004, situated in Plaquemines Parish, Louisiana, and more particularly described as follows: Beginning at the Northwest corner of Block 49, Breton Sound Area, having Coordinates of X = 2,635,350.00 and Y = 292,830.00; thence East 801.00 feet along the North line of said Block 49 to the Northwest corner of State Lease No. 17242 having Coordinates of X = 2,636,151.00 and Y = 292,830.00; thence along the Western, Southern and Eastern boundaries of said State Lease No. 17242, the following courses and distances, to wit: South 1,639.00 feet to a point having Coordinates of X = 2,636,151.00 and Y = 291,191.00; East 2,485.00 feet to a point having Coordinates of X = 2,638,636.00 and Y = 291,191.00; and North 1,639.00 feet to it's Northeast corner located on the North line of said Block 49, having Coordinates of X = 2,638,636.00 and Y = 292,830.00; thence East 520.00 feet along the North line of said Block 49 to the Northwest corner of State Lease No. 17241 having Coordinates of X = 2,639,156.00 and Y = 292,830.00; thence along the Western, Southern and Eastern boundaries of said State Lease No. 17241, the following courses and distances, to wit: South 4,278.00 feet to a point having Coordinates of X = 2,639,156.00 and Y = 288,552.00; East 3,525.00 feet to a point having Coordinates of X = 2,642,681.00 and Y = 288,552.00; and North 4,278.00 feet to it's Northeast corner located on the North line of said Block 49 having Coordinates of X = 2,642,681.00 and Y = 292,830.00; thence East 7,419.00 feet along the North line of said Block 49 to it's Northeast corner having Coordinates of X = 2,650,100.00 and Y = 292,830.00, thence South 890.00 feet along the East line of said Block 49 to the Northeast corner of State Lease No. 17239 having Coordinates of X = 2,650,100.00 and Y = 291,940.00; thence along the Northern, Western and Southern boundaries of said State Lease No. 17239, the following courses and distances, to wit: West 2,429.00 feet to a point having Coordinates of X = 2,647,671.00 and Y = 291,940.00; South 2,757.00 feet to a point having Coordinates of X = 2,647,671.00 and Y = 289,183.00; and East 2,429.00 feet to it's Southeast corner located on the East line of said Block 49 having Coordinates of X = 2,650,100.00 and Y = 289,183.00; thence South 3,728.00 feet along the East line of said Block 49 to a point having Coordinates of X = 2,650,100.00 and Y = 285,455.00; thence West 14,750.00 feet to a point on the West line of said Block 49 having Coordinates of X = 2,635,350.00 and Y = 285,455.00; thence North 7,375.00 feet along the West line of said Block 49 to the point of beginning, **LESS AND EXCEPT** all that portion of State Lease No. 17240 that lies entirely within the above described tract and being more particularly described as follows: Beginning at a point within Block 49, Breton Sound Area, having Coordinates of X = 2,647,286.00 and Y = 289,791.00; thence South 3,021.00 feet to a corner; thence West 2,696.00 feet to a corner; thence North 3,021.00 feet to a corner; thence

East 2,696.00 feet to the point of beginning; containing approximately **1,716.87 acres**, all as more particularly outlined on a plat on file in the Office of Mineral Resources, Department of Natural Resources. All bearings, distances and coordinates are based on Louisiana Coordinate System of 1927, (North or South Zone), where applicable.

NOTE: The above description of the Tract nominated for lease has been provided and corrected, where required, exclusively by the nomination party. Any mineral lease selected from this Tract and awarded by the Louisiana State Mineral Board shall be without warranty of any kind, either express, implied, or statutory, including, but not limited to, the implied warranties of merchantability and fitness for a particular purpose. Should the mineral lease awarded by the Louisiana State Mineral Board be subsequently modified, cancelled or abrogated due to the existence of conflicting leases, operating agreements, private claims or other future obligations or conditions which may affect all or any portion of the leased Tract, it shall not relieve the Lessee of the obligation to pay any bonus due thereon to the Louisiana State Mineral Board, nor shall the Louisiana State Mineral Board be obligated to refund any consideration paid by the Lessor prior to such modification, cancellation, or abrogation, including, but not limited to, bonuses, rentals and royalties.

NOTE: The State of Louisiana does hereby reserve, and this lease shall be subject to, the imprescriptible right of surface use in the nature of a servitude in favor of the Department of Natural Resources, including its Offices and Commissions, for the sole purpose of implementing, constructing, servicing and maintaining approved coastal zone management and/or restoration projects. Utilization of any and all rights derived under this lease by the mineral lessee, its agents, successors or assigns, shall not interfere with nor hinder the reasonable surface use by the Department of Natural Resources, its Offices or Commissions, as herein above reserved.

Applicant: Robert A. Schroeder, Inc.

Bidder	Cash Payment	Price/ Acre	Rental	Oil	Gas	Other



BRETON SOUND AREA

BLOCK BS0047

BLOCK BS0048

BLOCK BS0050

BLOCK BS0049

BLOCK MP0036

BLOCK MP0031

MAIN PASS AREA, REVISED

PLAQUEMINES PARISH

P.O.B.
X=2,635,350.00
Y=292,830.00

SL 17295

SL 17296

SL 17242

SL 17241

SL 17240

SL 17239



TRACT 36186 - Portion of Block 4, Eugene Island Area, Revised, Iberia Parish, Louisiana

All of the lands now or formerly constituting the beds and bottoms of all water bodies of every nature and description the title of which vests in the State of Louisiana, together with all islands arising therein and other lands formed by accretion or by reliction, where allowed by law, excepting tax adjudicated lands, and not presently under mineral lease on March 10, 2004, situated in Iberia Parish, Louisiana, and more particularly described as follows: Beginning at the Northwest corner of Block 4, Eugene Island Area, Revised, having Coordinates of X = 1,879,822.72 and Y = 297,634.00; thence South 9,166.52 feet along the West line of said Block 4 to a point having Coordinates of X = 1,879,822.72 and Y = 288,467.47; thence East 1,651.70 feet to a point being the Western most corner of State Lease No. 4236, as amended; thence Northeasterly along the North boundary of said State Lease No. 4236 to a point being a common corner of said State Lease No. 4236 and State Lease No. 5492, as amended; thence continuing Northeasterly along the North boundary of said State Lease No. 5492 to a point being another common corner of said State Lease No. 4236 and said State Lease No. 5492; thence continuing Northeasterly again along the North boundary of said State Lease No. 4236 to a point on the Western boundary of State Lease No. 340, as amended, and also being the Northeastern most corner of said State Lease No. 4236; thence Northerly approximately 1,973 feet along the Western boundary of said State Lease No. 340 to its Northwest corner; thence Westerly approximately 15,278 to the point of beginning, **LESS AND EXCEPT** that portion if any of State Lease No. 340, as amended, State Lease No. 4236, as amended, and State Lease No. 5492, as amended, that may fall within the above described tract, containing approximately **2,236 acres**, all as more particularly outlined on a plat on file in the Office of Mineral Resources, Department of Natural Resources. All bearings, distances and coordinates are based on Louisiana Coordinate System of 1927, (North or South Zone), where applicable.

NOTE: The above description of the Tract nominated for lease has been provided and corrected, where required, exclusively by the nomination party. Any mineral lease selected from this Tract and awarded by the Louisiana State Mineral Board shall be without warranty of any kind, either express, implied, or statutory, including, but not limited to, the implied warranties of merchantability and fitness for a particular purpose. Should the mineral lease awarded by the Louisiana State Mineral Board be subsequently modified, cancelled or abrogated due to the existence of conflicting leases, operating agreements, private claims or other future obligations or conditions which may affect all or any portion of the leased Tract, it shall not relieve the Lessee of the obligation to pay any bonus due thereon to the Louisiana State Mineral Board, nor shall the Louisiana State Mineral Board be obligated to refund any consideration paid by the Lessor prior to such modification, cancellation, or abrogation, including, but not limited to, bonuses, rentals and royalties.

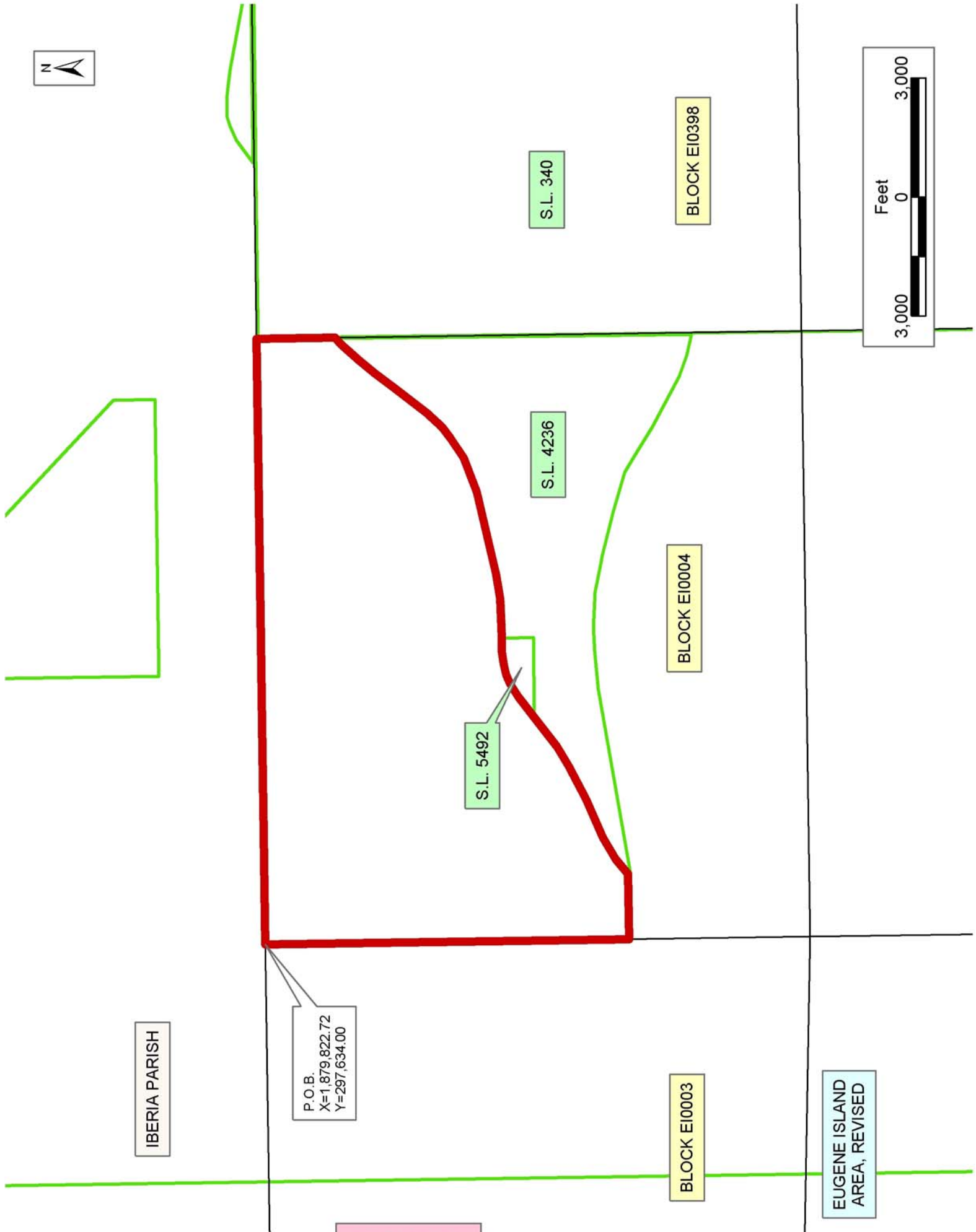
NOTE: The above described tract may be in the vicinity of existing shell reefs where drilling and dredging operations must be conducted in strict conformity with the regulations adopted by the Louisiana Department of Wildlife and Fisheries and/or the U.S. Corps of Engineers, U.S. Army.

NOTE: The State of Louisiana does hereby reserve, and this lease shall be subject to, the imprescriptible right of surface use in the nature of a servitude in favor of the Department of Natural Resources, including its Offices and Commissions, for the sole purpose of implementing, constructing, servicing and maintaining approved coastal zone management and/or restoration projects. Utilization of any and all rights derived under this lease by the mineral lessee, its agents, successors or assigns, shall not interfere with nor hinder the reasonable surface use by the Department of Natural Resources, its Offices or Commissions, as herein above reserved.

NOTE: The Department of Wildlife and Fisheries has designated certain areas in the coastal waters of the State of Louisiana as Oyster Seed Bed Areas. The exact location of those Seed Bed Areas must be obtained from the Department of Wildlife and Fisheries and any work done under a mineral lease from the State of Louisiana may necessarily be conducted in conformity with the rules and regulations promulgated by the said Department of Wildlife and Fisheries for Oyster Seed Bed Areas.

Applicant: Coastal Land Services, Inc.

Bidder	Cash Payment	Price/ Acre	Rental	Oil	Gas	Other



IBERIA PARISH

P.O.B.
X=1,879,822.72
Y=297,634.00

S.L. 5492

S.L. 4236

S.L. 340

BLOCK EI0003

BLOCK EI0004

BLOCK EI0398

EUGENE ISLAND
AREA, REVISED

Feet
0
3,000

TRACT 36187 - Portion of Block 4, Eugene Island Area, Revised, Iberia Parish, Louisiana

All of the lands now or formerly constituting the beds and bottoms of all water bodies of every nature and description the title of which vests in the State of Louisiana, together with all islands arising therein and other lands formed by accretion or by reliction, where allowed by law, excepting tax adjudicated lands, and not presently under mineral lease on March 10, 2004, situated in Iberia Parish, Louisiana, and more particularly described as follows: Beginning at the Southwest corner of Block 4, Eugene Island Area, Revised having coordinates of X= 1,879,822.72 and Y = 283,905.06; thence East 15,278.28 feet along the South line of said of Block 4 to its Southeast corner, also being a point on the Western boundary of State Lease No. 340, as amended, having coordinates of X = 1,895,101.00 and Y = 283,905.06; thence North 2,830.56 feet along the East line of said Block 4 and Western boundary of said State Lease No. 340 to a point being the Southeastern most corner of State Lease No. 4236, as amended, having coordinates of X = 1,895,101.00 and Y = 286,735.62; thence Westerly along the South boundary of said State Lease No. 4236 to its Western most corner having coordinates of X = 1,881,474.42 and Y = 288,467.47; thence West 1,651.70 feet to a point on the West line of said Block 4 having coordinates of X = 1,879,822.72 and Y = 288,467.47; thence South 4,562.41 feet along the West line of said Block 4 to the point of beginning, **LESS AND EXCEPT** that portion if any of State Lease No. 340, as amended, and State Lease No. 4236, as amended, containing approximately **1,637 acres**, all as more particularly outlined on a plat on file in the Office of Mineral Resources, Department of Natural Resources. All bearings, distances and coordinates are based on Louisiana Coordinate System of 1927, (North or South Zone), where applicable.

NOTE: The above description of the Tract nominated for lease has been provided and corrected, where required, exclusively by the nomination party. Any mineral lease selected from this Tract and awarded by the Louisiana State Mineral Board shall be without warranty of any kind, either express, implied, or statutory, including, but not limited to, the implied warranties of merchantability and fitness for a particular purpose. Should the mineral lease awarded by the Louisiana State Mineral Board be subsequently modified, cancelled or abrogated due to the existence of conflicting leases, operating agreements, private claims or other future obligations or conditions which may affect all or any portion of the leased Tract, it shall not relieve the Lessee of the obligation to pay any bonus due thereon to the Louisiana State Mineral Board, nor shall the Louisiana State Mineral Board be obligated to refund any consideration paid by the Lessor prior to such modification, cancellation, or abrogation, including, but not limited to, bonuses, rentals and royalties.

NOTE: The above described tract may be in the vicinity of existing shell reefs where drilling and dredging operations must be conducted in strict conformity with the regulations adopted by the Louisiana Department of Wildlife and Fisheries and/or the U.S. Corps of Engineers, U.S. Army.

NOTE: The State of Louisiana does hereby reserve, and this lease shall be subject to, the imprescriptible right of surface use in the nature of a servitude in favor of the Department of Natural Resources, including its Offices and Commissions, for the sole purpose of implementing, constructing, servicing and maintaining approved coastal zone management and/or restoration projects. Utilization of any and all rights derived under this lease by the mineral lessee, its agents, successors or assigns, shall not interfere with nor hinder the reasonable surface use by the Department of Natural Resources, its Offices or Commissions, as herein above reserved.

NOTE: The Department of Wildlife and Fisheries has designated certain areas in the coastal waters of the State of Louisiana as Oyster Seed Bed Areas. The exact location of those Seed Bed Areas must be obtained from the Department of Wildlife and Fisheries and any work done under a mineral lease from the State of Louisiana may necessarily be conducted in conformity with the rules and regulations promulgated by the said Department of Wildlife and Fisheries for Oyster Seed Bed Areas.

Applicant: Coastal Land Services, Inc.

Bidder	Cash Payment	Price/ Acre	Rental	Oil	Gas	Other



TRACT 36188 - Portion of Block 5, Eugene Island Area, Revised, Iberia Parish, Louisiana

All of the lands now or formerly constituting the beds and bottoms of all water bodies of every nature and description the title of which vests in the State of Louisiana, together with all islands arising therein and other lands formed by accretion or by reliction, where allowed by law, excepting tax adjudicated lands, and not presently under mineral lease on March 10, 2004, situated in Iberia Parish, Louisiana, and more particularly described as follows: Beginning at the Northwest corner of Block 5, Eugene Island Area, Revised having Coordinates of X = 1,879,822.72 and Y = 283,905.06; thence South 7,127.76 feet along the West line of said Block 5 to a point having Coordinates of X = 1,879,822.72 and Y = 276,777.29; thence East 15,278.28 feet to a point on the East line of said Block 5 and Western boundary of State Lease No. 340, as amended, having Coordinates of X = 1,895,101.00 and Y = 276,777.29; thence North 7,127.76 feet along said Western boundary of said State Lease No. 340, and said East line of said Block 5 to its Northeast corner having Coordinates of X = 1,895,101.00 and Y = 283,905.06; thence West 15,278.28 feet along the North line of said Block 5 to the point of beginning, **LESS AND EXCEPT** that portion, if any, of State Lease No. 340, as amended, that may lie within the above described tract, containing approximately **2,499.99 acres**, all as more particularly outlined on a plat on file in the Office of Mineral Resources, Department of Natural Resources. All bearings, distances and coordinates are based on Louisiana Coordinate System of 1927, (North or South Zone), where applicable.

NOTE: The above description of the Tract nominated for lease has been provided and corrected, where required, exclusively by the nomination party. Any mineral lease selected from this Tract and awarded by the Louisiana State Mineral Board shall be without warranty of any kind, either express, implied, or statutory, including, but not limited to, the implied warranties of merchantability and fitness for a particular purpose. Should the mineral lease awarded by the Louisiana State Mineral Board be subsequently modified, cancelled or abrogated due to the existence of conflicting leases, operating agreements, private claims or other future obligations or conditions which may affect all or any portion of the leased Tract, it shall not relieve the Lessee of the obligation to pay any bonus due thereon to the Louisiana State Mineral Board, nor shall the Louisiana State Mineral Board be obligated to refund any consideration paid by the Lessor prior to such modification, cancellation, or abrogation, including, but not limited to, bonuses, rentals and royalties.

NOTE: The above described tract may be in the vicinity of existing shell reefs where drilling and dredging operations must be conducted in strict conformity with the regulations adopted by the Louisiana Department of Wildlife and Fisheries and/or the U.S. Corps of Engineers, U.S. Army.

NOTE: The State of Louisiana does hereby reserve, and this lease shall be subject to, the imprescriptible right of surface use in the nature of a

servitude in favor of the Department of Natural Resources, including its Offices and Commissions, for the sole purpose of implementing, constructing, servicing and maintaining approved coastal zone management and/or restoration projects. Utilization of any and all rights derived under this lease by the mineral lessee, its agents, successors or assigns, shall not interfere with nor hinder the reasonable surface use by the Department of Natural Resources, its Offices or Commissions, as herein above reserved.

NOTE: The Department of Wildlife and Fisheries has designated certain areas in the coastal waters of the State of Louisiana as Oyster Seed Bed Areas. The exact location of those Seed Bed Areas must be obtained from the Department of Wildlife and Fisheries and any work done under a mineral lease from the State of Louisiana may necessarily be conducted in conformity with the rules and regulations promulgated by the said Department of Wildlife and Fisheries for Oyster Seed Bed Areas.

Applicant: Coastal Land Services, Inc.

Bidder	Cash Payment	Price/ Acre	Rental	Oil	Gas	Other



IBERIA PARISH

BLOCK EI0398

S.L. 340

BLOCK EI0403



BLOCK EI0004

BLOCK EI0005

Cowdelline

EUGENE ISLAND AREA, REVISED

BLOCK EI0003

BLOCK EI0006

P.O.B.
X=1,879,822.72
Y=283,905.06

TRACT 36189 - Portion of Block 5, Eugene Island Area, Revised, Iberia Parish, Louisiana

All of the lands now or formerly constituting the beds and bottoms of all water bodies of every nature and description the title of which vests in the State of Louisiana, together with all islands arising therein and other lands formed by accretion or by reliction, where allowed by law, excepting tax adjudicated lands, and not presently under mineral lease on March 10, 2004, situated in Iberia Parish, Louisiana, and more particularly described as follows: Beginning at a point on the Western line of Block 5, Eugene Island Area, Revised having Coordinates of X = 1,879,822.72 and Y = 272,315.33; thence South 55 degrees 12 minutes 33 seconds East 3,023.82 feet to a point having Coordinates of X = 1,882,306 and Y = 270,590; thence North 70 degrees 26 minutes 53 seconds East 13,577.93 feet to a point on the Eastern line of said Block 5 and Western Boundary of State Lease No. 340, as amended, having Coordinates of X = 1,895,101.00 and Y = 275,134.02; thence North 1,643.27 feet along said East Line of said Block 5 and said Western boundary of said State Lease No. 340 to a point having Coordinates of X = 1,895,101.00 and Y = 276,777.29; thence West 15,278.28 feet to a point on the West line of said Block 5 having Coordinates of X = 1,879,822.72 and Y = 276,777.29; thence South 4,461.96 feet along the West line of said Block 5 to the point of beginning, **LESS AND EXCEPT** that portion, if any, of State Lease No. 340, as amended, that may lie within the above described tract, containing approximately **1,453.59 acres**, all as more particularly outlined on a plat on file in the Office of Mineral Resources, Department of Natural Resources. All bearings, distances and coordinates are based on Louisiana Coordinate System of 1927, (North or South Zone), where applicable.

NOTE: The above description of the Tract nominated for lease has been provided and corrected, where required, exclusively by the nomination party. Any mineral lease selected from this Tract and awarded by the Louisiana State Mineral Board shall be without warranty of any kind, either express, implied, or statutory, including, but not limited to, the implied warranties of merchantability and fitness for a particular purpose. Should the mineral lease awarded by the Louisiana State Mineral Board be subsequently modified, cancelled or abrogated due to the existence of conflicting leases, operating agreements, private claims or other future obligations or conditions which may affect all or any portion of the leased Tract, it shall not relieve the Lessee of the obligation to pay any bonus due thereon to the Louisiana State Mineral Board, nor shall the Louisiana State Mineral Board be obligated to refund any consideration paid by the Lessor prior to such modification, cancellation, or abrogation, including, but not limited to, bonuses, rentals and royalties.

NOTE: The above described tract may be in the vicinity of existing shell reefs where drilling and dredging operations must be conducted in strict conformity with the regulations adopted by the Louisiana Department of Wildlife and Fisheries and/or the U.S. Corps of Engineers, U.S. Army.

NOTE: The State of Louisiana does hereby reserve, and this lease shall be subject to, the imprescriptible right of surface use in the nature of a servitude in favor of the Department of Natural Resources, including its Offices and Commissions, for the sole purpose of implementing, constructing, servicing and maintaining approved coastal zone management and/or restoration projects. Utilization of any and all rights derived under this lease by the mineral lessee, its agents, successors or assigns, shall not interfere with nor hinder the reasonable surface use by the Department of Natural Resources, its Offices or Commissions, as herein above reserved.

NOTE: The Department of Wildlife and Fisheries has designated certain areas in the coastal waters of the State of Louisiana as Oyster Seed Bed Areas. The exact location of those Seed Bed Areas must be obtained from the Department of Wildlife and Fisheries and any work done under a mineral lease from the State of Louisiana may necessarily be conducted in conformity with the rules and regulations promulgated by the said Department of Wildlife and Fisheries for Oyster Seed Bed Areas.

Applicant: Coastal Land Services, Inc.

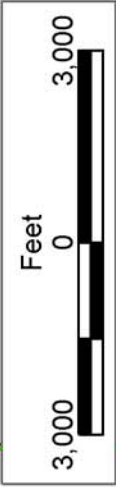
Bidder	Cash Payment	Price/ Acre	Rental	Oil	Gas	Other



BLOCK EI0403

S.L. 340

BLOCK EI0404



IBERIA PARISH

BLOCK EI0005

BLOCK EI0012

EUGENE ISLAND
AREA, REVISED

BLOCK EI0006

BLOCK EI0011

P.O.B.
X=1,879,822.72
Y=272,315.33

Coastline

TRACT 36190 - Terrebonne Parish, Louisiana

All of the lands now or formerly constituting the beds and bottoms of all water bodies of every nature and description the title of which vests in the State of Louisiana, together with all islands arising therein and other lands formed by accretion or by reliction, where allowed by law, excepting tax adjudicated lands, and not presently under mineral lease on March 10, 2004, situated in Terrebonne Parish, Louisiana, and more particularly described as follows: Beginning at a point having Coordinates of X = 2,251,355.47 and Y = 208,787.09; thence West 7,824.92 feet to a point having Coordinates of X = 2,243,530.55 and Y = 208,787.09; thence North 8,874.54 feet to a point having Coordinates of X = 2,243,530.55 and Y = 217,661.63; thence East 7,824.92 feet to a point having Coordinates of X = 2,251,355.47 and Y = 217,661.63; thence South 8,874.54 feet to the Point of Beginning, containing approximately **1,592 acres**, all as more particularly outlined on a plat on file in the Office of Mineral Resources, Department of Natural Resources. All bearings, distances and coordinates are based on Louisiana Coordinate System of 1927, (North or South Zone), where applicable.

NOTE: The above description of the Tract nominated for lease has been provided and corrected, where required, exclusively by the nomination party. Any mineral lease selected from this Tract and awarded by the Louisiana State Mineral Board shall be without warranty of any kind, either express, implied, or statutory, including, but not limited to, the implied warranties of merchantability and fitness for a particular purpose. Should the mineral lease awarded by the Louisiana State Mineral Board be subsequently modified, cancelled or abrogated due to the existence of conflicting leases, operating agreements, private claims or other future obligations or conditions which may affect all or any portion of the leased Tract, it shall not relieve the Lessee of the obligation to pay any bonus due thereon to the Louisiana State Mineral Board, nor shall the Louisiana State Mineral Board be obligated to refund any consideration paid by the Lessor prior to such modification, cancellation, or abrogation, including, but not limited to, bonuses, rentals and royalties.

NOTE: The State of Louisiana does hereby reserve, and this lease shall be subject to, the imprescriptible right of surface use in the nature of a servitude in favor of the Department of Natural Resources, including its Offices and Commissions, for the sole purpose of implementing, constructing, servicing and maintaining approved coastal zone management and/or restoration projects. Utilization of any and all rights derived under this lease by the mineral lessee, its agents, successors or assigns, shall not interfere with nor hinder the reasonable surface use by the Department of Natural Resources, its Offices or Commissions, as herein above reserved.

NOTE: The Department of Wildlife and Fisheries has designated certain areas in the coastal waters of the State of Louisiana as Oyster Seed Bed Areas. The exact location of those Seed Bed Areas must be obtained from

the Department of Wildlife and Fisheries and any work done under a mineral lease from the State of Louisiana may necessarily be conducted in conformity with the rules and regulations promulgated by the said Department of Wildlife and Fisheries for Oyster Seed Bed Areas.

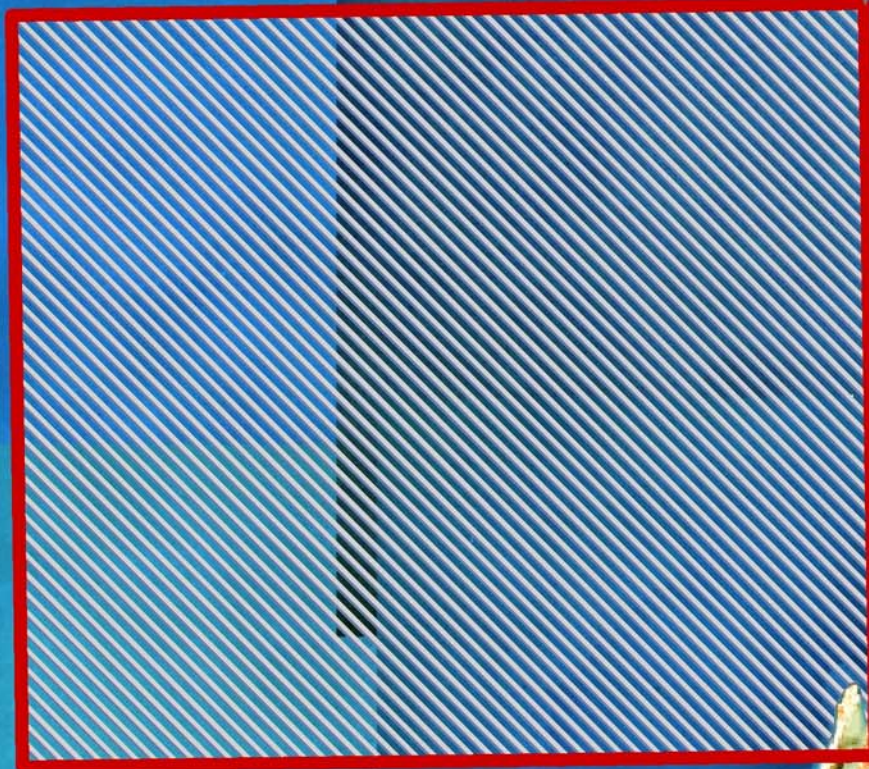
Applicant: Cummings Energy

Bidder	Cash Payment	Price/ Acre	Rental	Oil	Gas	Other



LAKE BARRE

TERREBONNE PARISH



P.O.B.
X=2,251,355.47
Y=208,787.09



TRACT 36191 - Terrebonne Parish, Louisiana

All of the lands now or formerly constituting the beds and bottoms of all water bodies of every nature and description the title of which vests in the State of Louisiana, together with all islands arising therein and other lands formed by accretion or by reliction, where allowed by law, excepting tax adjudicated lands, and not presently under mineral lease on March 10, 2004, situated in Terrebonne Parish, Louisiana, and more particularly described as follows: Beginning at a point having Coordinates of X = 2,251,355.47 and Y = 217,661.63; thence East 10,927.86 feet to a point having Coordinates of X = 2,262,283.33 and Y = 217,661.63; thence South 4,718.03 feet to a point having Coordinates of X = 2,262,283.33 and Y = 212,943.60; thence South 00 degrees 25 minutes 10 seconds East 179.20 feet to a point having Coordinates of X = 2,262,284.64 and Y = 212,764.40; thence South 89 degrees 34 minutes 50 seconds West 1,045.57 feet to a point having Coordinates of X = 2,261,239.10 and Y = 212,756.75, being the most North Northeast corner of State Lease No. 199, as amended; thence along the boundary of said State Lease No. 199 the following: South 89 degrees 34 minutes 50 seconds West 3,708.02 feet, South 00 degrees 25 minutes 10 seconds East 2,453.02 feet, South 58 degrees 22 minutes 50 seconds East 727.40 feet, South 62 degrees 20 minutes 44 seconds East 929.31 feet, South 66 degrees 23 minutes 23 seconds East 922.32 feet and South 70 degrees 28 minutes 30 seconds East 919.97 feet to a point on its West Line having Coordinates of X = 2,260,703.89 and Y = 208,787.09; thence West 9,348.42 feet to a point having Coordinates of X = 2,251,355.47 and Y = 208,787.09; thence North 8,874.54 feet to the Point of Beginning, containing approximately **1,843.41 acres**, all as more particularly outlined on a plat on file in the Office of Mineral Resources, Department of Natural Resources. All bearings, distances and coordinates are based on Louisiana Coordinate System of 1927, (North or South Zone), where applicable.

NOTE: The above description of the Tract nominated for lease has been provided and corrected, where required, exclusively by the nomination party. Any mineral lease selected from this Tract and awarded by the Louisiana State Mineral Board shall be without warranty of any kind, either express, implied, or statutory, including, but not limited to, the implied warranties of merchantability and fitness for a particular purpose. Should the mineral lease awarded by the Louisiana State Mineral Board be subsequently modified, cancelled or abrogated due to the existence of conflicting leases, operating agreements, private claims or other future obligations or conditions which may affect all or any portion of the leased Tract, it shall not relieve the Lessee of the obligation to pay any bonus due thereon to the Louisiana State Mineral Board, nor shall the Louisiana State Mineral Board be obligated to refund any consideration paid by the Lessor prior to such modification, cancellation, or abrogation, including, but not limited to, bonuses, rentals and royalties.

NOTE: The State of Louisiana does hereby reserve, and this lease shall be subject to, the imprescriptible right of surface use in the nature of a

servitude in favor of the Department of Natural Resources, including its Offices and Commissions, for the sole purpose of implementing, constructing, servicing and maintaining approved coastal zone management and/or restoration projects. Utilization of any and all rights derived under this lease by the mineral lessee, its agents, successors or assigns, shall not interfere with nor hinder the reasonable surface use by the Department of Natural Resources, its Offices or Commissions, as herein above reserved.

NOTE: The Department of Wildlife and Fisheries has designated certain areas in the coastal waters of the State of Louisiana as Oyster Seed Bed Areas. The exact location of those Seed Bed Areas must be obtained from the Department of Wildlife and Fisheries and any work done under a mineral lease from the State of Louisiana may necessarily be conducted in conformity with the rules and regulations promulgated by the said Department of Wildlife and Fisheries for Oyster Seed Bed Areas.

Applicant: Cummings Energy

Bidder	Cash Payment	Price/ Acre	Rental	Oil	Gas	Other



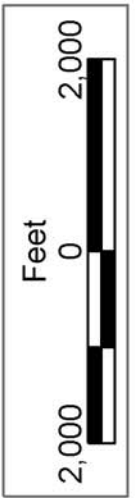
LAKE BARRE

TERREBONNE PARISH

P.O.B.
X=2,251,355.47
Y=217,661.63

SL 199

T21S - R19E



TRACT 36192 - Portion of Block 7, Grand Isle Area, Jefferson and Plaquemines Parishes, Louisiana

All of the lands now or formerly constituting the beds and bottoms of all water bodies of every nature and description the title of which vests in the State of Louisiana, together with all islands arising therein and other lands formed by accretion or by reliction, where allowed by law, excepting tax adjudicated lands, and not presently under mineral lease on March 10, 2004, situated in Jefferson and Plaquemines Parishes, Louisiana, and more particularly described as follows: Beginning at a point within Block 7, Grand Isle Area, having Coordinates of X = 2,451,418.00 and Y = 206,219.00; thence East 6,174.00 feet to a point on the East boundary of said Block 7, having Coordinates X = 2,457,592.00 and Y = 206,219.00; thence South 5,927.00 feet, along the East boundary of said Block 7, to its Southeast corner having Coordinates X = 2,457,592.00 and Y = 200,292.00; thence West 6,174.00 feet along the South boundary of said Block 7 to a point having Coordinates X = 2,451,418.00 and Y = 200,292.00; thence North 5,927.00 feet to the point of beginning containing approximately **834.00 acres**, all as more particularly outlined on a plat on file in the Office of Mineral Resources, Department of Natural Resources. All bearings, distances and coordinates are based on Louisiana Coordinate System of 1927, (North or South Zone), where applicable.

NOTE: The above description of the Tract nominated for lease has been provided and corrected, where required, exclusively by the nomination party. Any mineral lease selected from this Tract and awarded by the Louisiana State Mineral Board shall be without warranty of any kind, either express, implied, or statutory, including, but not limited to, the implied warranties of merchantability and fitness for a particular purpose. Should the mineral lease awarded by the Louisiana State Mineral Board be subsequently modified, cancelled or abrogated due to the existence of conflicting leases, operating agreements, private claims or other future obligations or conditions which may affect all or any portion of the leased Tract, it shall not relieve the Lessee of the obligation to pay any bonus due thereon to the Louisiana State Mineral Board, nor shall the Louisiana State Mineral Board be obligated to refund any consideration paid by the Lessor prior to such modification, cancellation, or abrogation, including, but not limited to, bonuses, rentals and royalties.

NOTE: The State of Louisiana does hereby reserve, and this lease shall be subject to, the imprescriptible right of surface use in the nature of a servitude in favor of the Department of Natural Resources, including its Offices and Commissions, for the sole purpose of implementing, constructing, servicing and maintaining approved coastal zone management and/or restoration projects. Utilization of any and all rights derived under this lease by the mineral lessee, its agents, successors or assigns, shall not interfere with nor hinder the reasonable surface use by the Department of Natural Resources, its Offices or Commissions, as herein above reserved.

NOTE: It appears, according to our records, that a portion of this Tract is located within the restrictive safety fairway area as set out by the Corps of Engineers, U.S. Army and/or the restrictive anchorage area as set out by the U.S. Coast Guard.

Applicant: Millennium Offshore Group, Inc.

Bidder	Cash Payment	Price/ Acre	Rental	Oil	Gas	Other



PLAQUEMINES PARISH

BLOCK GI0008

BLOCK GI0009



JEFFERSON PARISH

GRAND ISLE AREA

P.O.B.
X=2,451,418.00
Y=206,219.00

BLOCK GI0007

BLOCK GI0010