

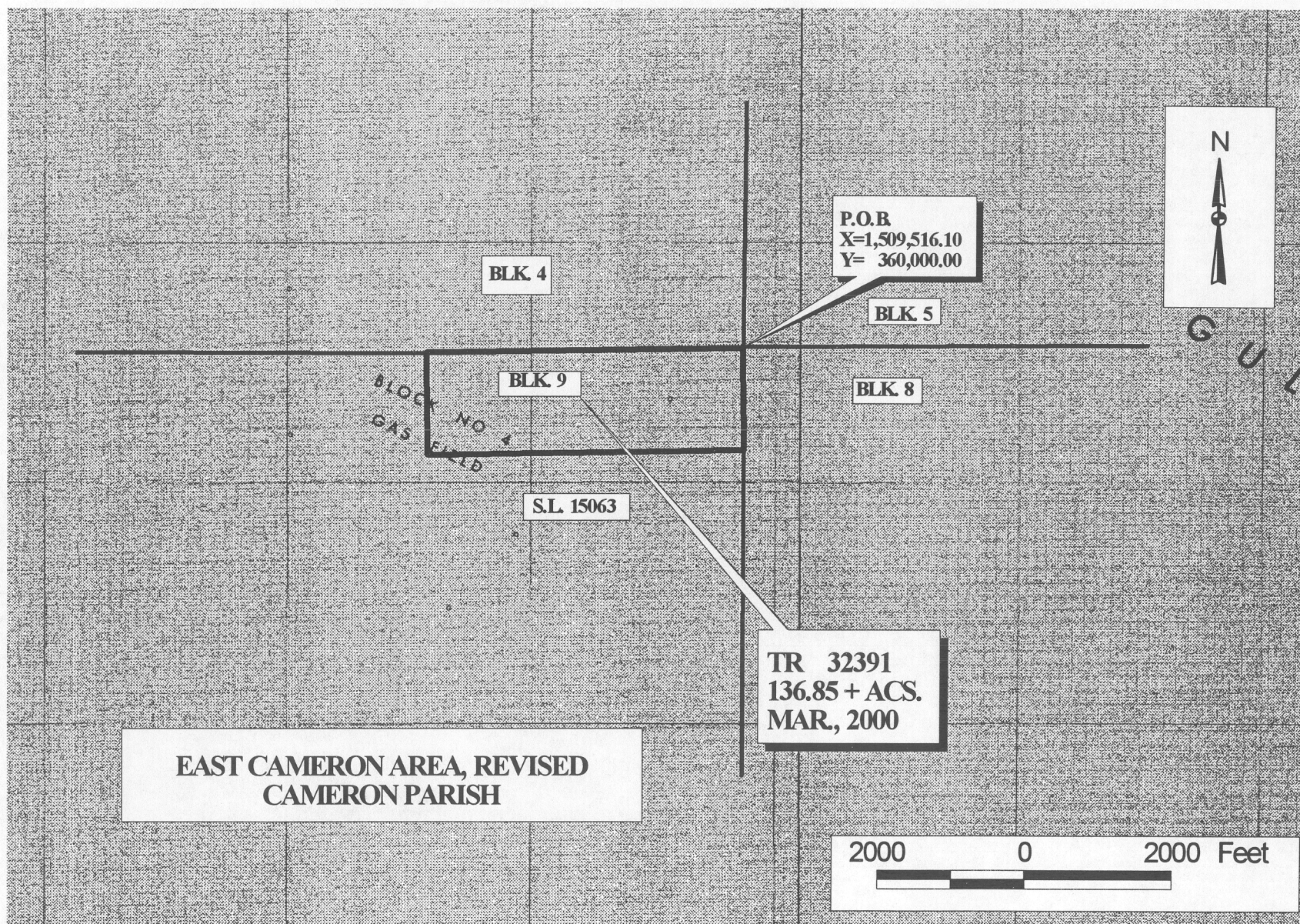
TRACT 32391 - PORTION OF BLOCK 9, EAST CAMERON AREA, REVISED, Cameron Parish, Louisiana

That portion of Block 9, East Cameron Area, Revised, Cameron Parish, Louisiana, belonging to the State of Louisiana and not under mineral lease on March 8, 2000, described as follows: Beginning at the Northeast corner of Block 9, East Cameron Area, Revised, having Coordinates of X = 1,509,516.10 and Y = 360,000.00; thence South, 1,400.00 feet on the East line of said Block 9 to a point having Coordinates of X = 1,509,516.10 and Y = 358,600.00, also being the most Easterly Northeast corner of State Lease No. 15063; thence along the boundary of said State Lease No. 15063 the following courses: West, 4,258.10 feet and North, 1,400.00 feet to a point on the North line of said Block 9 having Coordinates of X = 1,505,258.00 and Y = 360,000.00; thence East, 4,258.10 feet to the point of beginning, containing approximately 136.85 acres, as shown outlined in red on a plat on file in the Office of Mineral Resources, Department of Natural Resources. All bearings, distances and coordinates are based on Louisiana Coordinate System of 1927 (South Zone).

NOTE: The State of Louisiana does hereby reserve, and this lease shall be subject to, the imprescriptible right of surface use in the nature of a servitude in favor of the Department of Natural Resources, including its Offices and Commissions, for the sole purpose of implementing, constructing, servicing and maintaining approved coastal zone management and/or restoration projects. Utilization of any and all rights derived under this lease by the mineral lessee, its agents, successors or assigns, shall not interfere with nor hinder the reasonable surface use by the Department of Natural Resources, its Offices or Commissions, as hereinabove reserved.

Applicant: TRI-UNION DEVELOPMENT CORPORATION

Bidder	Cash Payment	Price / Acre	Rental	Oil	Gas	Other



OFFICIAL COPY
OFFICE OF MINERAL RESOURCES
DEPT. OF NATURAL RESOURCES
DO NOT REMOVE