

**TRACT 32405 - PORTION OF BLOCK 66, SOUTH PASS AREA, Plaquemines Parish, Louisiana**

That portion of Block 66, South Pass Area, Plaquemines Parish, Louisiana, belonging to the State of Louisiana and not under mineral lease on March 8, 2000, described as follows: Beginning at the Northwest corner of Block 66, South Pass Area, having Coordinates of X = 2,763,508.00 and Y = 170,698.00; thence East 3,409.69 feet along the North line of said Block 66 to a point having Coordinates of X = 2,766,917.69 and Y = 170,698.00; thence Southwesterly along an arc to the right having a radius of 18,240.60 feet and a center at X = 2,753,885 and Y = 183,460 to a point having Coordinates of X = 2,765,449 and Y = 169,354; thence Southwesterly along an arc to the right having a radius of 18,240.60 feet and a center at X = 2,752,470 and Y = 182,170 to a point on the West line of said Block 66 having Coordinates of X = 2,763,508.00 and Y = 167,648.22; thence North 3,049.78 feet on said West line of said Block 66 to the point of beginning, containing approximately **123.21 acres**, as shown outlined in red on a plat on file in the Office of Mineral Resources, Department of Natural Resources, **LESS AND EXCEPT** that portion thereof, if any, which is more than three nautical miles from the coast line as determined by the Report of the Special Master in the litigation in the Supreme Court of the United States styled United States v. State of Louisiana et al No. 9 Original, said three mile line as set out in the June, 1975, decree of the Supreme Court. All bearings, distances and coordinates are based on Louisiana Coordinate System of 1927 (South Zone).

NOTE: The State of Louisiana does hereby reserve, and this lease shall be subject to, the imprescriptible right of surface use in the nature of a servitude in favor of the Department of Natural Resources, including its Offices and Commissions, for the sole purpose of implementing, constructing, servicing and maintaining approved coastal zone management and/or restoration projects. Utilization of any and all rights derived under this lease by the mineral lessee, its agents, successors or assigns, shall not interfere with nor hinder the reasonable surface use by the Department of Natural Resources, its Offices or Commissions, as hereinabove reserved.

Applicant: Harold J. Anderson, Inc.

Bidder	Cash Payment	Price / Acre	Rental	Oil	Gas	Other



LA  
USA

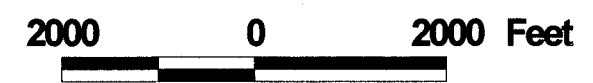
P.O.B.  
X= 2,763,508.00  
Y= 170,698.00

MAIN PASS AREA, REVISED  
SOUTH PASS AREA

TR 32405  
123.21 + ACS.  
MAR, 2000

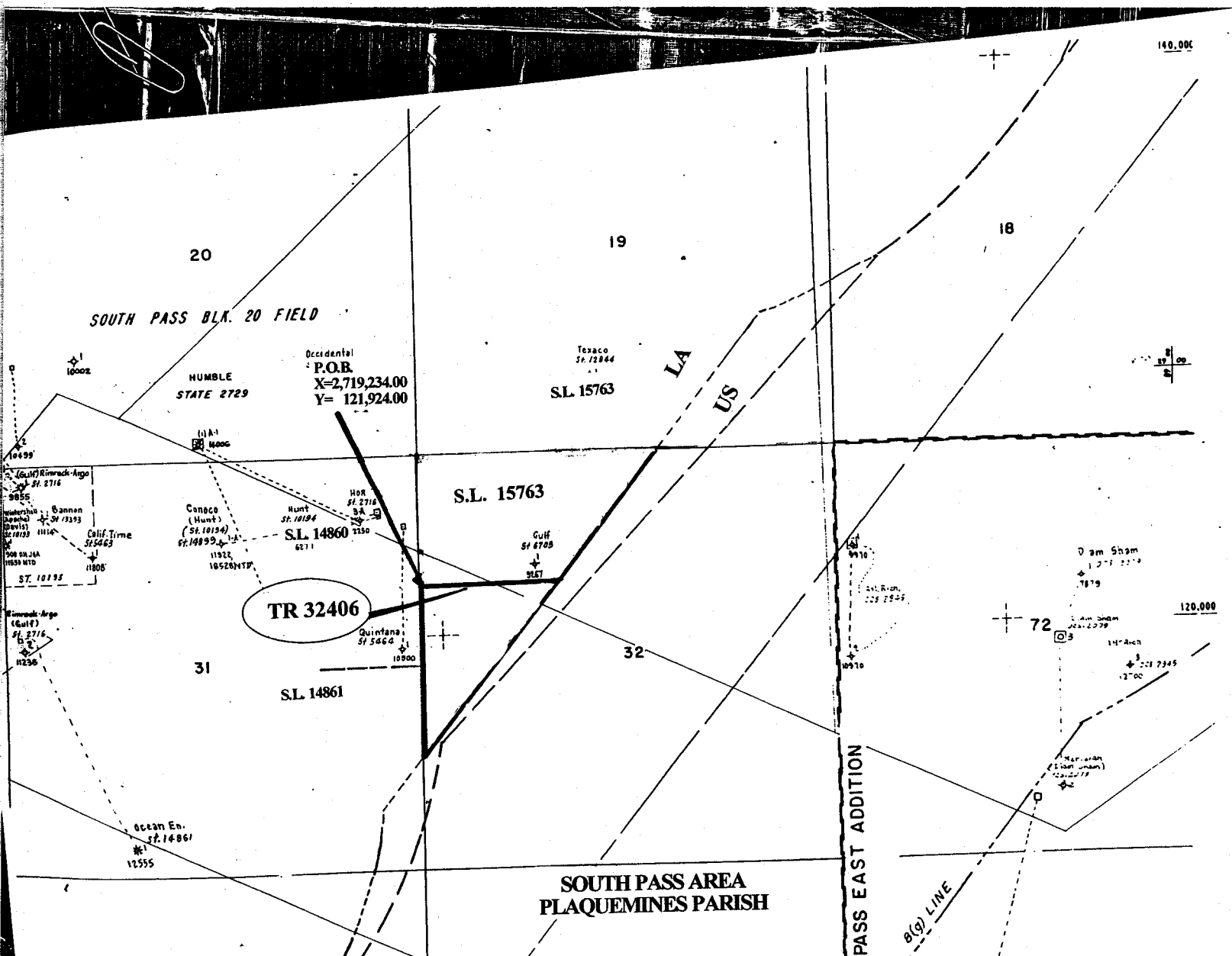
BLK. 66

PLAQUEMINES PARISH



OFFICIAL COPY  
OFFICE OF MINERAL RESOURCES  
DEPT. OF NATURAL RESOURCES  
DO NOT REMOVE

NOT TO BE USED WITH A PORTION BID  
FOR INFORMATIONAL PURPOSES ONLY!



MAP NOT TO SCALE

F & A Map Services  
Division of PI

**TRACT 32406 - PORTION OF BLOCK 32, SOUTH PASS AREA, Plaquemines Parish, Louisiana**

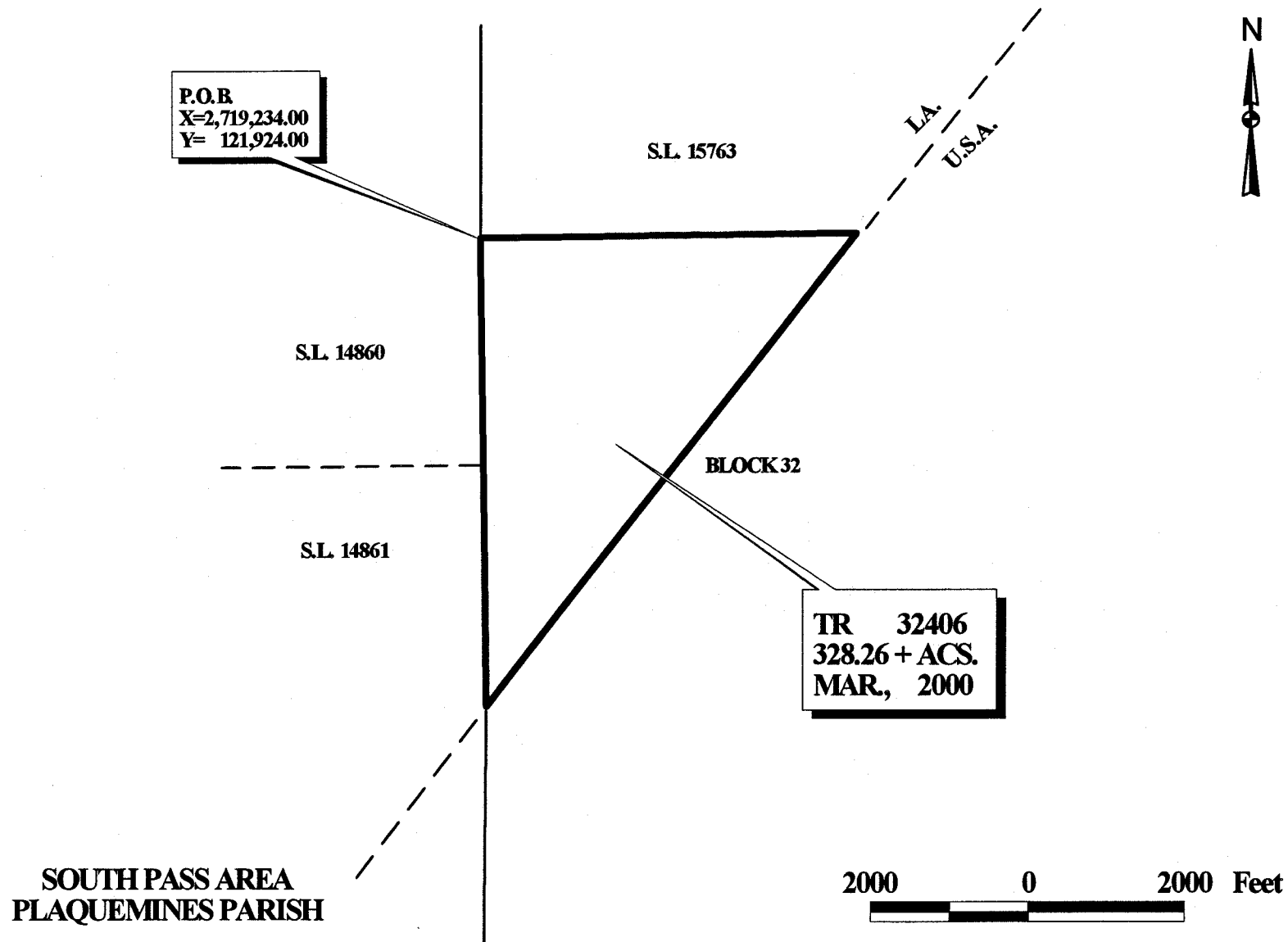
That portion of Block 32, South Pass Area, Plaquemines Parish, Louisiana, belonging to the State of Louisiana and not under mineral lease on March 8, 2000, described as follows: Beginning at a point on the West line of Block 32, South Pass Area, also being the Southwest corner of State Lease No. 15763, having Coordinates of X = 2,719,234.00 and Y = 121,924.00; thence East 4,771.71 feet on the South line of said State Lease No. 15763 to its Southeast corner having Coordinates of X = 2,724,005.71 and Y = 121,924.00; thence Southwesterly on a straight line to a point on the West line of said Block 32 having Coordinates of X = 2,719,234.00 and Y = 115,930.69; thence North 5,993.31 feet on the West line of said Block 32 to the point of beginning, containing approximately **328.26 acres**, as shown outlined in red on a plat on file in the Office of Mineral Resources, Department of Natural Resources, **LESS AND EXCEPT** that portion thereof, if any, which is more than three nautical miles from the coast line as determined by the Report of the Special Master in the litigation in the Supreme Court of the United States styled United States v. State of Louisiana et al No. 9 Original, said three mile line as set out in the June, 1975, decree of the Supreme Court. All bearings, distances and coordinates are based on Louisiana Coordinate System of 1927 (South Zone).

NOTE: It appears, according to our records, that a portion of this tract is located within the restrictive anchorage area as set out by the U. S. Coast Guard.

NOTE: The State of Louisiana does hereby reserve, and this lease shall be subject to, the imprescriptible right of surface use in the nature of a servitude in favor of the Department of Natural Resources, including its Offices and Commissions, for the sole purpose of implementing, constructing, servicing and maintaining approved coastal zone management and/or restoration projects. Utilization of any and all rights derived under this lease by the mineral lessee, its agents, successors or assigns, shall not interfere with nor hinder the reasonable surface use by the Department of Natural Resources, its Offices or Commissions, as hereinabove reserved.

Applicant: Oil and Gas Interests, Inc.

Bidder	Cash Payment	Price / Acre	Rental	Oil	Gas	Other



OFFICIAL COPY  
OFFICE OF MINERAL RESOURCES  
DEPT. OF NATURAL RESOURCES  
DO NOT REMOVE