

TRACT 32442 - PORTION OF BLOCK 13, MAIN PASS AREA, REVISED, Plaquemines and St. Bernard Parishes, Louisiana

All of the lands now or formerly constituting the beds and bottoms of all water bodies of every nature and description and all islands and other lands formed by accretion or reliction, except tax lands, belonging to the State of Louisiana and not under mineral lease on March 8, 2000, situated in Plaquemines and St. Bernard Parishes, Louisiana, and more particularly described as follows: Beginning at the Northeast corner of Block 13, Main Pass Area, Revised, having Coordinates of X = 2,591,100.00 and Y = 351,830.00; thence South 7,375.00 feet along the East boundary of said Block 13 to the Northeast corner of State Lease No. 15531 having Coordinates of X = 2,591,100.00 and Y = 344,455.00; thence West along the North boundary of said State Lease No. 15531 approximately 13,780 feet to the Northwest corner of said State Lease No. 15531 which lies on an East boundary of State Lease No. 195, as amended, having a Coordinate of Y = 344,455.00; thence Northerly along a East boundary of said State Lease No. 195 approximately 7,375 feet to the Northwest corner of said Block 13 having a Coordinate of Y = 351,830.00; thence East approximately 13,900 feet along the North boundary of said Block 13 to the point of beginning, **LESS AND EXCEPT** any portion of State Lease No. 195, as amended, that may lie within the above described tract, containing approximately **2,344 acres**, as shown outlined in red on a plat on file in the Office of Mineral Resources, Department of Natural Resources. All bearings, distances and coordinates are based on Louisiana Coordinate System of 1927 (South Zone).

NOTE: The above tract is located in or near an oyster restricted area and all operations in such area must be conducted in strict conformity with the stipulations and/or regulations of the Louisiana Department of Wildlife and Fisheries.

NOTE: The State of Louisiana does hereby reserve, and this lease shall be subject to, the imprescriptible right of surface use in the nature of a servitude in favor of the Department of Natural Resources, including its Offices and Commissions, for the sole purpose of implementing, constructing, servicing and maintaining approved coastal zone management and/or restoration projects. Utilization of any and all rights derived under this lease by the mineral lessee, its agents, successors or assigns, shall not interfere with nor hinder the reasonable surface use by the Department of Natural Resources, its Offices or Commissions, as hereinabove reserved.

Applicant: Thomas Sheridan

Bidder	Cash Payment	Price / Acre	Rental	Oil	Gas	Other

ST. BERNARD
PLAQUEMINES PARISH
BLACK BAY

P.O.B.
X = 2,591,100.00
Y = 351,830.00

ST. BERNARD
PLAQUEMINES PARISH



BLK. 13

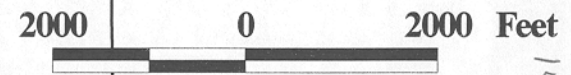
BLK. 14

TR 32442
2,344 +ACS.
MAR., 2000

S.L 15531

S.L 15529

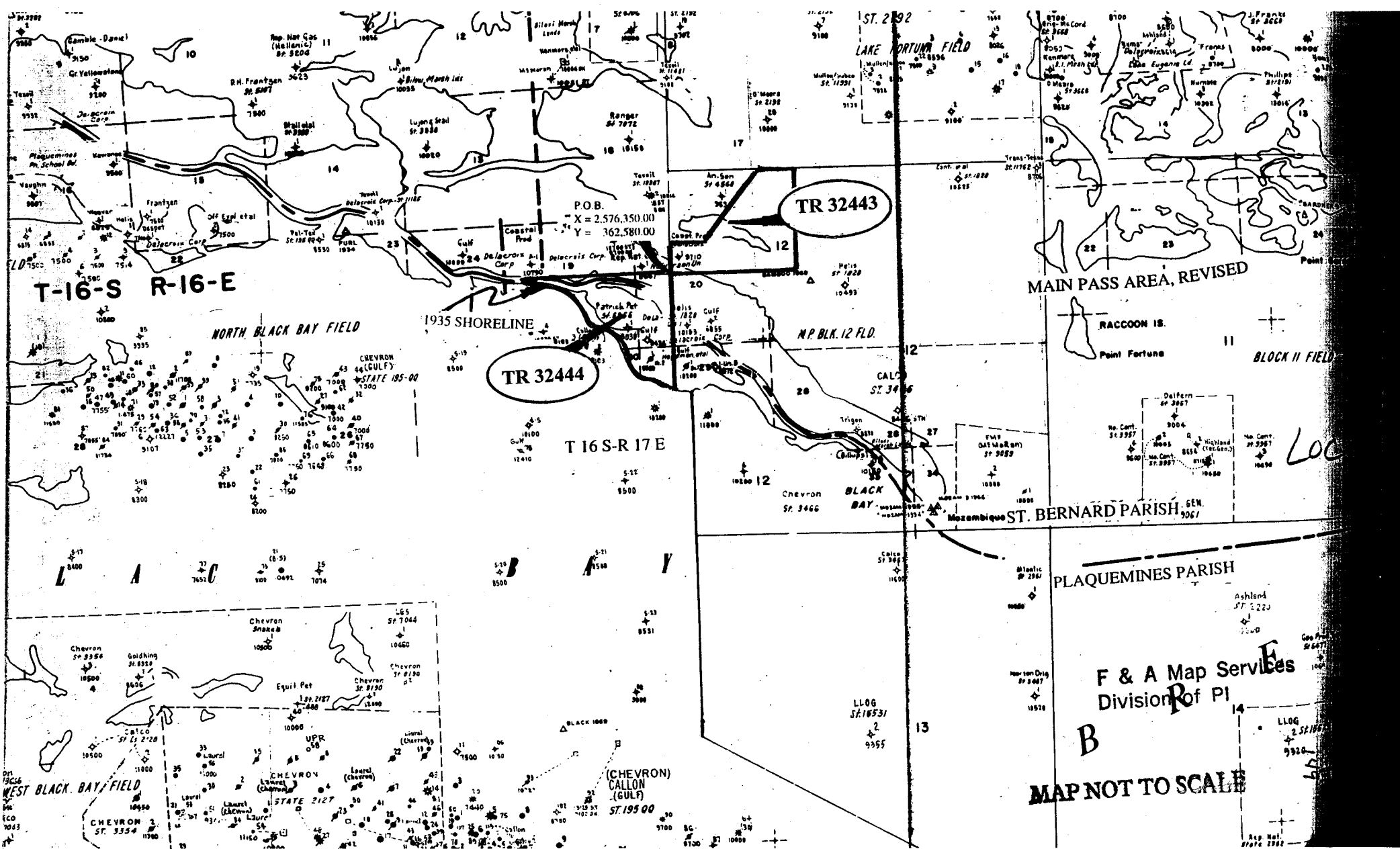
MAIN PASS AREA, REVISED



OFFICIAL COPY
OFFICE OF MINERAL RESOURCES
DEPT. OF NATURAL RESOURCES
DO NOT REMOVE

148

NOT TO BE USED WITH A PORTION BID
FOR INFORMATIONAL PURPOSES ONLY!



TRACT 32443 - PORTION OF BLOCK 12, MAIN PASS AREA, REVISED, St. Bernard Parish, Louisiana

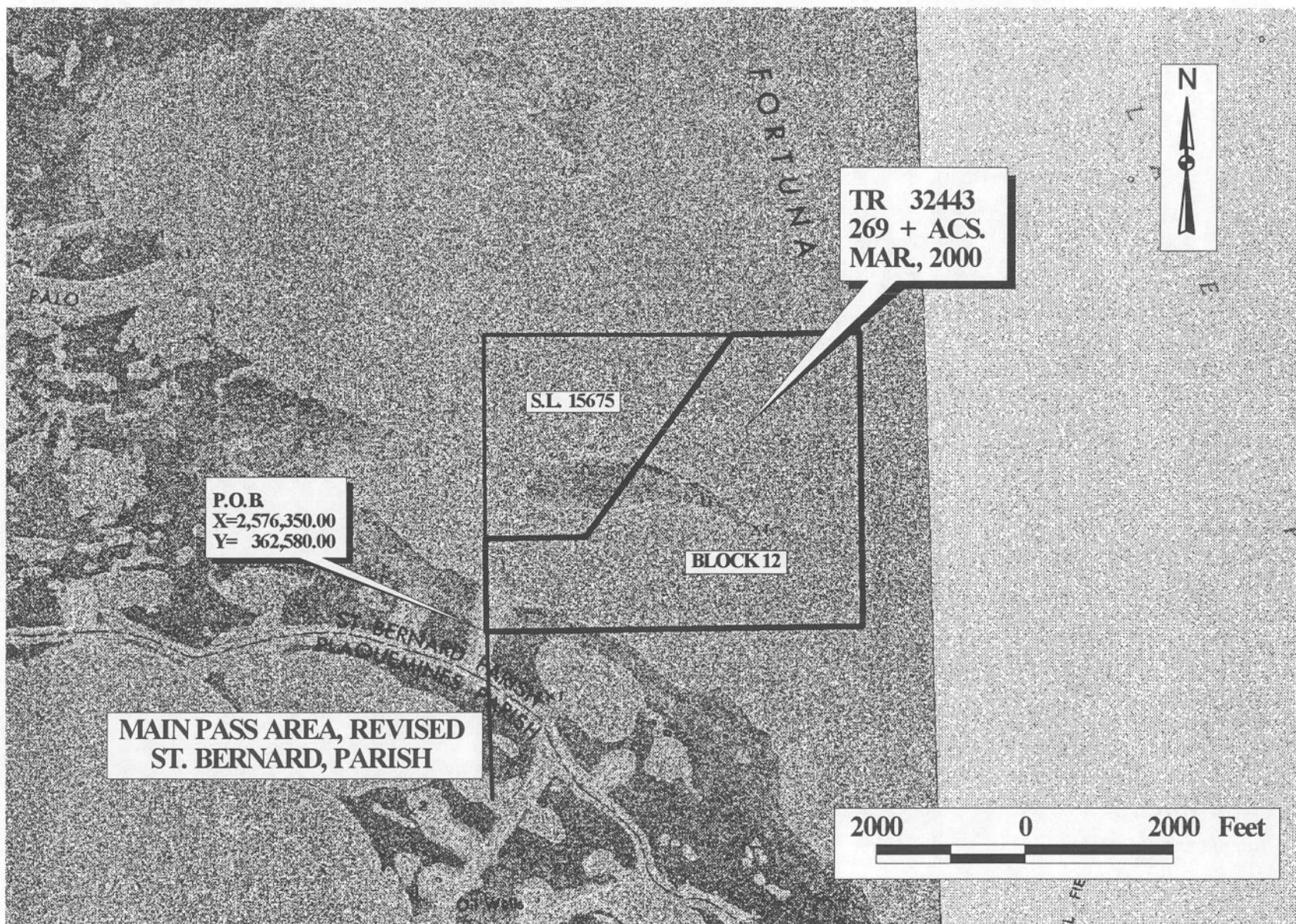
All of the lands now or formerly constituting the beds and bottoms of all water bodies of every nature and description and all islands and other lands formed by accretion or reliction, except tax lands, belonging to the State of Louisiana and not under mineral lease on March 8, 2000, situated in St. Bernard Parish, Louisiana, and more particularly described as follows: Beginning at a point on the West boundary of Block 12, Main Pass Area, Revised, having Coordinates of X = 2,576,350.00 and Y = 362,580.00; thence North 1,270.00 feet along the West boundary of said Block 12 to the Southwest corner of State Lease No. 15675 having Coordinates of X = 2,576,350.00 and Y = 363,850.00; thence East along the South boundary of said State Lease No. 15675 a distance of 1,350.00 feet to the Southeast corner of said State Lease No. 15675 having Coordinates of X = 2,577,700.00 and Y = 363,850.00; thence North 36 degrees 13 minutes 45 seconds East along the Eastern boundary of said State Lease No. 15675 a distance of 3,384.33 feet to its Northeast corner on the North boundary of said Block 12 having Coordinates of X = 2,579,700.19 and Y = 366,580.00; thence East 1,699.81 feet along the North boundary of said Block 12 to a point having Coordinates of X = 2,581,400.00 and Y = 366,580.00; thence South 4,000.00 feet to a point having Coordinates of X = 2,581,400.00 and Y = 362,580.00; thence West 5,050.00 feet to the point of beginning, containing approximately 269 acres, as shown outlined in red on a plat on file in the Office of Mineral Resources, Department of Natural Resources. All bearings, distances and coordinates are based on Louisiana Coordinate System of 1927 (South Zone).

NOTE: The above tract is located in an oyster restricted area and all operations in such area must be conducted in strict conformity with the stipulations and/or regulations of the Louisiana Department of Wildlife and Fisheries.

NOTE: The State of Louisiana does hereby reserve, and this lease shall be subject to, the imprescriptible right of surface use in the nature of a servitude in favor of the Department of Natural Resources, including its Offices and Commissions, for the sole purpose of implementing, constructing, servicing and maintaining approved coastal zone management and/or restoration projects. Utilization of any and all rights derived under this lease by the mineral lessee, its agents, successors or assigns, shall not interfere with nor hinder the reasonable surface use by the Department of Natural Resources, its Offices or Commissions, as hereinabove reserved.

Applicant: Thomas Sheridan

Bidder	Cash Payment	Price / Acre	Rental	Oil	Gas	Other



OFFICIAL COPY
OFFICE OF MINERAL RESOURCES
DEPT. OF NATURAL RESOURCES
DO NOT REMOVE