

TRACT 32431 - Plaquemines and St. Bernard Parishes, Louisiana

All of the lands now or formerly constituting the beds and bottoms of all water bodies of every nature and description and all islands and other lands formed by accretion or reliction, except tax lands, owned by and not under mineral lease from the State of Louisiana on March 8, 2000, situated in Plaquemines and St. Bernard Parishes, Louisiana, within the following described boundaries: Beginning at a point having Coordinates of X = 2,536,200.00 and Y = 372,455.00; thence East 13,800.00 feet to a point having Coordinates of X = 2,550,000.00 and Y = 372,455.00; thence South approximately 5,575 feet to a point on the North boundary of State Lease No. 195, as amended, having a Coordinate of X = 2,550,000.00; thence Southwesterly along a Northern boundary of said State Lease No. 195 to its intersection with an East-West line having a Coordinate of Y = 362,020.00; thence West approximately 10,066 feet to a point having Coordinates of X = 2,536,200.00 and Y = 362,020.00; thence North 10,435.00 feet to the point of beginning, **LESS AND EXCEPT** any portion of State Lease No. 195, as amended, that may lie within the above described tract, containing approximately **1,946 acres**, as shown outlined in red on a plat on file in the Office of Mineral Resources, Department of Natural Resources. All bearings, distances and coordinates are based on Louisiana Coordinate System of 1927 (South Zone).

NOTE: The above tract is located in or near an oyster restricted area and all operations in such area must be conducted in strict conformity with the stipulations and/or regulations of the Louisiana Department of Wildlife and Fisheries.

NOTE: The State of Louisiana does hereby reserve, and this lease shall be subject to, the imprescriptible right of surface use in the nature of a servitude in favor of the Department of Natural Resources, including its Offices and Commissions, for the sole purpose of implementing, constructing, servicing and maintaining approved coastal zone management and/or restoration projects. Utilization of any and all rights derived under this lease by the mineral lessee, its agents, successors or assigns, shall not interfere with nor hinder the reasonable surface use by the Department of Natural Resources, its Offices or Commissions, as hereinabove reserved.

Applicant: Thomas Sheridan

Bidder	Cash Payment	Price / Acre	Rental	Oil	Gas	Other

ST. BERNARD PARISH

P.O.B
X= 2,536,200.00.
Y= 372,455.00

T16S-R15E

T16S-R16E

N

S.L. 195

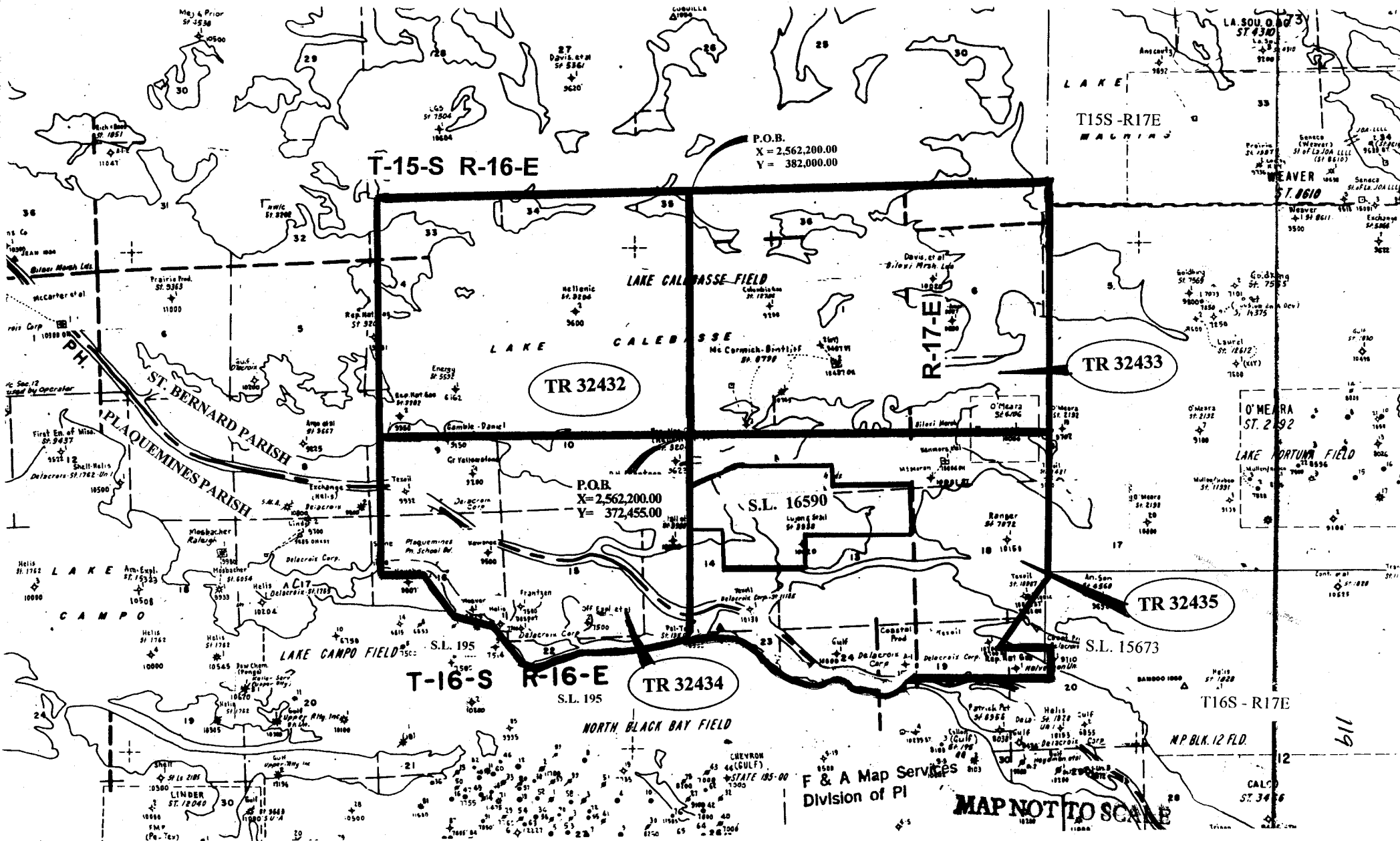
PLAQUEMINES PARISH

TR 32431
1,946 + ACS.
MAR, 2000

2000 0 2000 Feet

OFFICIAL COPY
OFFICE OF MINERAL RESOURCES
DEPT. OF NATURAL RESOURCES
DO NOT REMOVE

NOT TO BE USED WITH A PORTION BID
FOR INFORMATIONAL PURPOSES ONLY!



TRACT 32432 - St. Bernard Parish, Louisiana

All of the lands now or formerly constituting the beds and bottoms of all water bodies of every nature and description and all islands and other lands formed by accretion or reliction, except tax lands, owned by and not under mineral lease from the State of Louisiana on March 8, 2000, situated in St. Bernard Parish, Louisiana, within the following described boundaries: Beginning at a point having Coordinates of X = 2,562,200.00 and Y = 382,000.00; thence South 9,545.00 feet to a point having Coordinates of X = 2,562,200.00 and Y = 372,455.00; thence West 12,200.00 feet to a point having Coordinates of X = 2,550,000.00 and Y = 372,455.00; thence North 9,545.00 feet to a point having Coordinates of X = 2,550,000.00 and Y = 382,000.00; thence East 12,200.00 feet to the point of beginning, containing approximately **2,474 acres**, as shown outlined in red on a plat on file in the Office of Mineral Resources, Department of Natural Resources. All bearings, distances and coordinates are based on Louisiana Coordinate System of 1927 (South Zone).

NOTE: The above tract is located in or near an oyster restricted area and all operations in such area must be conducted in strict conformity with the stipulations and/or regulations of the Louisiana Department of Wildlife and Fisheries.

NOTE: The State of Louisiana does hereby reserve, and this lease shall be subject to, the imprescriptible right of surface use in the nature of a servitude in favor of the Department of Natural Resources, including its Offices and Commissions, for the sole purpose of implementing, constructing, servicing and maintaining approved coastal zone management and/or restoration projects. Utilization of any and all rights derived under this lease by the mineral lessee, its agents, successors or assigns, shall not interfere with nor hinder the reasonable surface use by the Department of Natural Resources, its Offices or Commissions, as hereinabove reserved.

Applicant: Thomas Sheridan

Bidder	Cash Payment	Price / Acre	Rental	Oil	Gas	Other

P.O.B
X= 2,562,200.00
Y= 382,000.00



T15S-R16E

T16S-R16E

LAKE CALEBASSE

TR 32432
2,474 +ACS.
MAR., 2000

GRANDE

ST. BERNARD PARISH

2000 0 2000 Feet

OFFICIAL COPY
OFFICE OF MINERAL RESOURCES
DEPT. OF NATURAL RESOURCES
DO NOT REMOVE