

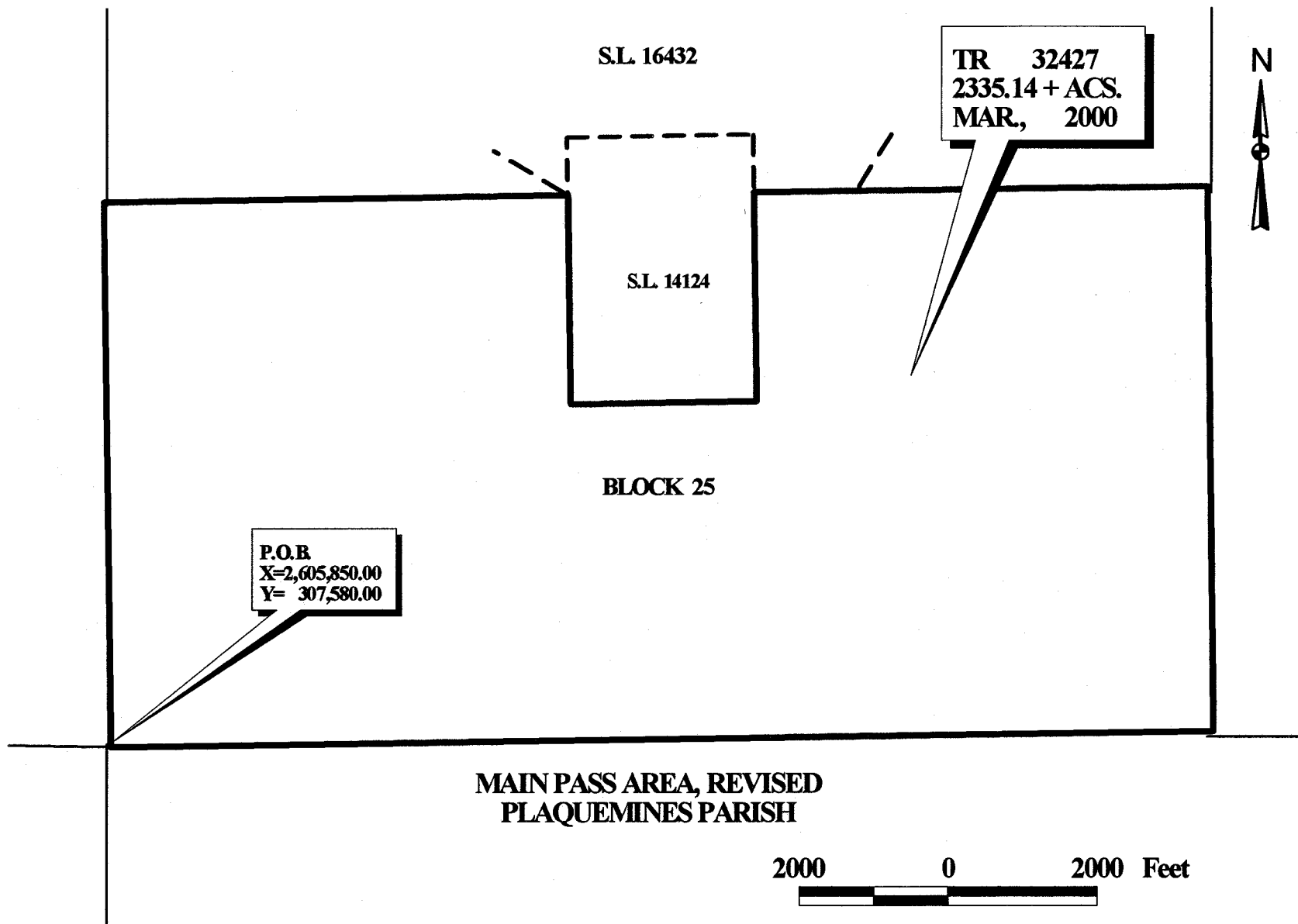
TRACT 32427 - PORTION OF BLOCK 25, MAIN PASS AREA, REVISED, Plaquemines Parish, Louisiana

All of the lands now or formerly constituting the beds and bottoms of all water bodies of every nature and description and all islands and other lands formed by accretion or reliction, except tax lands, belonging to the State of Louisiana and not under mineral lease on March 8, 2000, situated in Plaquemines Parish, Louisiana, and more particularly described as follows: Beginning at the Southwest corner of Block 25, Main Pass Area, Revised, having Coordinates of X = 2,605,850.00 and Y = 307,580.00; thence North 7,375.00 feet to a point having Coordinates of X = 2,605,850.00 and Y = 314,955.00; thence East 6,200.00 feet to a point on the West line of State Lease No. 14124 having Coordinates of X = 2,612,050.00 and Y = 314,955.00; thence on the boundary of said State Lease No. 14124 the following courses: South 2,825.00 feet, East 2,500.00 feet and North 2,825.00 feet to a point having Coordinates of X = 2,614,550.00 and Y = 314,955.00; thence East 6,050.00 feet to a point on the East line of said Block 25 having Coordinates of X = 2,620,600.00 and Y = 314,955.00; thence South 7,375.00 feet on said East line of said Block 25 to its Southeast corner having Coordinates of X = 2,620,600.00 and Y = 307,580.00; thence West 14,750.00 feet on the South line of said Block 25 to the point of beginning, containing approximately 2,335.14 acres, as shown outlined in red on a plat on file in the Office of Mineral Resources, Department of Natural Resources. All bearings, distances and coordinates are based on Louisiana Coordinate System of 1927 (South Zone).

NOTE: The State of Louisiana does hereby reserve, and this lease shall be subject to, the imprescriptible right of surface use in the nature of a servitude in favor of the Department of Natural Resources, including its Offices and Commissions, for the sole purpose of implementing, constructing, servicing and maintaining approved coastal zone management and/or restoration projects. Utilization of any and all rights derived under this lease by the mineral lessee, its agents, successors or assigns, shall not interfere with nor hinder the reasonable surface use by the Department of Natural Resources, its Offices or Commissions, as hereinabove reserved.

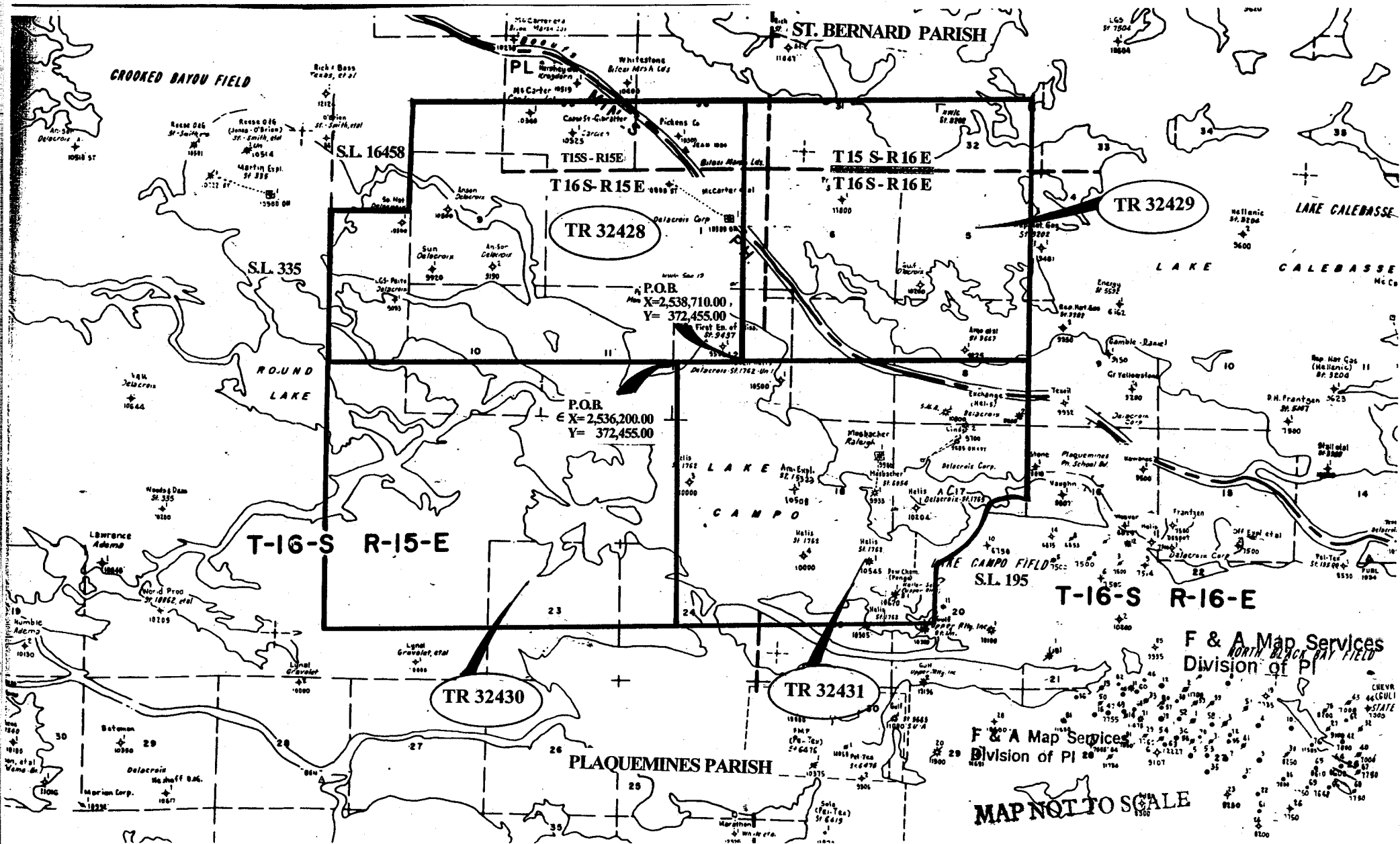
Applicant: Thomas Sheridan

Bidder	Cash Payment	Price / Acre	Rental	Oil	Gas	Other



OFFICIAL COPY
OFFICE OF MINERAL RESOURCES
DEPT. OF NATURAL RESOURCES
DO NOT REMOVE

NOT TO BE USED WITH A PORTION BID
FOR INFORMATIONAL PURPOSES ONLY!



TRACT 32428 - Plaquemines and St. Bernard Parishes, Louisiana

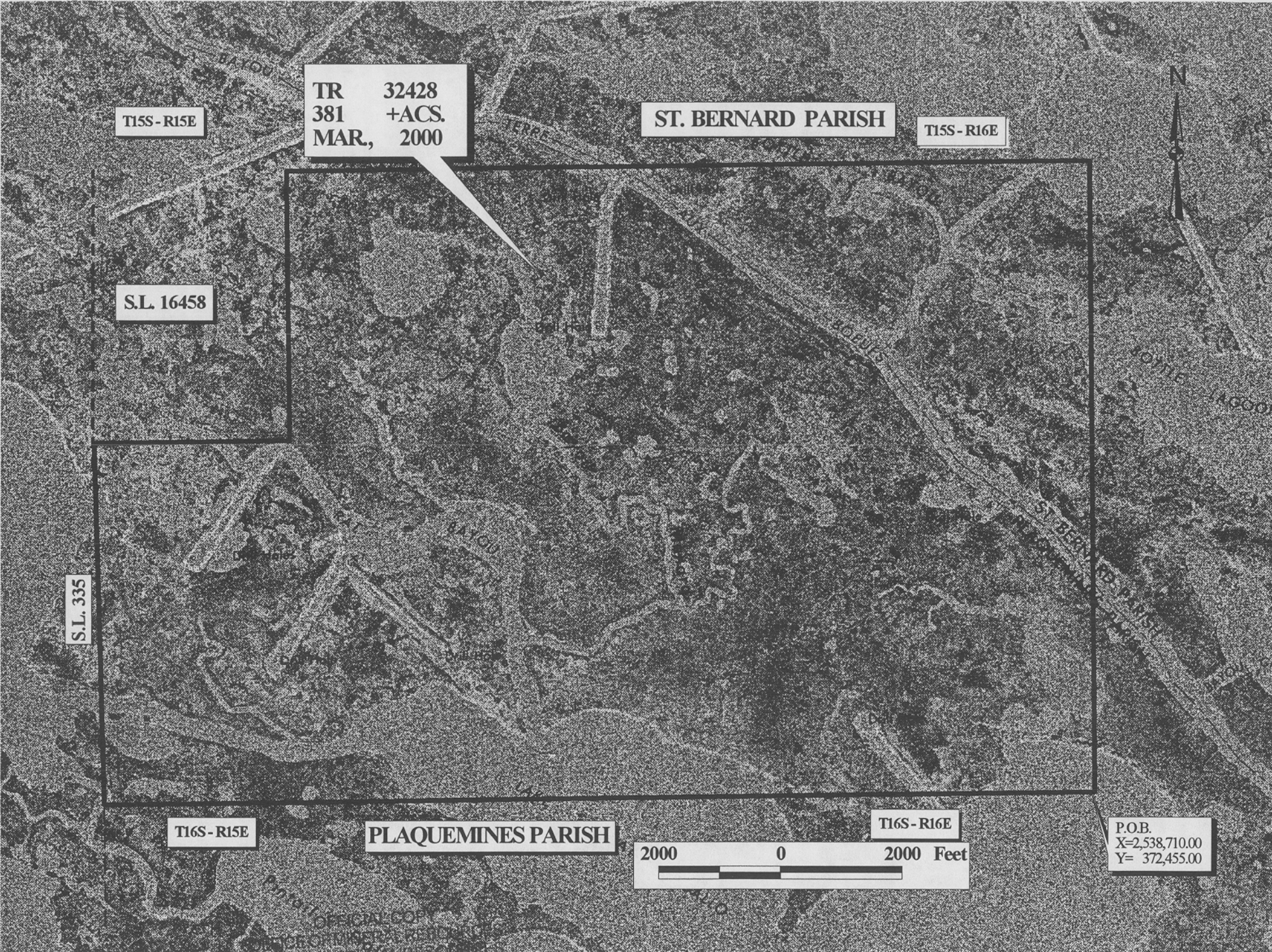
All of the lands now or formerly constituting the beds and bottoms of all water bodies of every nature and description and all islands and other lands formed by accretion or reliction, except tax lands, owned by and not under mineral lease from the State of Louisiana on March 8, 2000, situated in Plaquemines and St. Bernard Parishes, Louisiana, within the following described boundaries: Beginning at a point having Coordinates of X = 2,538,710.00 and Y = 372,455.00; thence West approximately 16,175 feet to the Eastern boundary of State Lease No. 335, as amended; thence North approximately 5,985 feet along the East boundary of said State Lease No. 335 to a point being the Southwest corner of State Lease No. 16458 having a Coordinate of Y = 378,440.00; thence East approximately 3,185 feet to a point having Coordinates of X = 2,525,636.71 and Y = 378,440.00 being the Southeast corner of said State Lease No. 16458; thence North 4,450.00 feet to a point having Coordinates of X = 2,525,636.71 and Y = 382,890.00 being the Northeast corner of said State Lease No. 16458; thence East 13,073.29 feet to a point having Coordinates of X = 2,538,710.00 and Y = 382,890.00; thence South 10,435.00 feet to the point of beginning, **LESS AND EXCEPT** any portion of State Lease No. 335, as amended, that may lie within the above described tract, containing approximately **381 acres**, as shown outlined in red on a plat on file in the Office of Mineral Resources, Department of Natural Resources. All bearings, distances and coordinates are based on Louisiana Coordinate System of 1927 (South Zone).

NOTE: The above tract is located in or near an oyster restricted area and all operations in such area must be conducted in strict conformity with the stipulations and/or regulations of the Louisiana Department of Wildlife and Fisheries.

NOTE: The State of Louisiana does hereby reserve, and this lease shall be subject to, the imprescriptible right of surface use in the nature of a servitude in favor of the Department of Natural Resources, including its Offices and Commissions, for the sole purpose of implementing, constructing, servicing and maintaining approved coastal zone management and/or restoration projects. Utilization of any and all rights derived under this lease by the mineral lessee, its agents, successors or assigns, shall not interfere with nor hinder the reasonable surface use by the Department of Natural Resources, its Offices or Commissions, as hereinabove reserved.

Applicant: Thomas Sheridan

Bidder	Cash Payment	Price / Acre	Rental	Oil	Gas	Other



TR 32428
381 +ACS.
MAR, 2000

ST. BERNARD PARISH

T15S - R15E

T15S - R16E

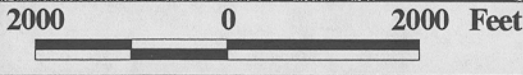
S.L. 16458

S.L. 335

T16S - R15E

PLAQUEMINES PARISH

T16S - R16E



P.O.B.
X=2,538,710.00
Y= 372,455.00

OFFICIAL COPY
OFFICE OF MINERAL RESOURCES
DEPT. OF NATURAL RESOURCES
DO NOT REMOVE