

TRACT 32423 - PORTION OF BLOCK 24, MAIN PASS AREA, REVISED, Plaquemines Parish, Louisiana

All of the lands now or formerly constituting the beds and bottoms of all water bodies of every nature and description and all islands and other lands formed by accretion or reliction, except tax lands, belonging to the State of Louisiana and not under mineral lease on March 8, 2000, situated in Plaquemines Parish, Louisiana, and more particularly described as follows: Beginning at the Northeast corner of Block 24, Main Pass Area, Revised, having Coordinates of X = 2,605,850.00 and Y = 322,330.00; thence South 7,375.00 feet along the East line of said Block 24 to a point having Coordinates of X = 2,605,850.00 and Y = 314,955.00; thence West 4,500.00 feet to a point being the Southeast corner of State Lease No. 16406 having Coordinates of X = 2,601,350.00 and Y = 314,955.00; thence North 7,375.00 feet along the East boundary of said State Lease No. 16406 to its Northeast corner having Coordinates of X = 2,601,350.00 and Y = 322,330.00; thence East 4,500.00 feet along the North line of said Block 24 to the point of beginning, containing approximately 761.88 acres, as shown outlined in red on a plat on file in the Office of Mineral Resources, Department of Natural Resources. All bearings, distances and coordinates are based on Louisiana Coordinate System of 1927 (South Zone).

NOTE: The State of Louisiana does hereby reserve, and this lease shall be subject to, the imprescriptible right of surface use in the nature of a servitude in favor of the Department of Natural Resources, including its Offices and Commissions, for the sole purpose of implementing, constructing, servicing and maintaining approved coastal zone management and/or restoration projects. Utilization of any and all rights derived under this lease by the mineral lessee, its agents, successors or assigns, shall not interfere with nor hinder the reasonable surface use by the Department of Natural Resources, its Offices or Commissions, as hereinabove reserved.

Applicant: Thomas Sheridan

Bidder	Cash Payment	Price / Acre	Rental	Oil	Gas	Other

S.L. 195

BLK. 23

P.O.B.
X= 2,605,850.00
Y= 322,330.00



S.L. 16406

TR 32423
761.88 + ACS.
MAR., 2000

S.L. 2410

BLK. 24

MAIN PASS AREA, REVISED
PLAQUEMINES PARISH

2000 0 2000 Feet

OFFICIAL COPY
OFFICE OF MINERAL RESOURCES
DEPT. OF NATURAL RESOURCES
DO NOT REMOVE

TRACT 32424 - PORTION OF BLOCK 25, MAIN PASS AREA, REVISED, Plaquemines Parish, Louisiana

All of the lands now or formerly constituting the beds and bottoms of all water bodies of every nature and description and all islands and other lands formed by accretion or reliction, except tax lands, belonging to the State of Louisiana and not under mineral lease on March 8, 2000, situated in Plaquemines Parish, Louisiana, and more particularly described as follows: Beginning at the Northwest corner of Block 25, Main Pass Area, Revised, having Coordinates of X = 2,605,850.00 and Y = 322,330.00; thence East 2,200.00 feet along the North line of said Block 25 to the Northwest corner of State Lease No. 16432 having Coordinates of X = 2,608,050.00 and Y = 322,330.00; thence South 28 degrees 28 minutes 27 seconds East 8,389.91 feet along the West line of said State Lease No. 16432 to its most Westerly Southwest corner which lies on the West line of State Lease No. 14124 having Coordinates of X = 2,612,050.00 and Y = 314,955.00; thence West 6,200.00 feet to a point on the West line of said Block 25 having Coordinates of X = 2,605,850.00 and Y = 314,955.00; thence North 7,375.00 feet on said West line of said Block 25 to the point of beginning, containing approximately 711.09 acres, as shown outlined in red on a plat on file in the Office of Mineral Resources, Department of Natural Resources. All bearings, distances and coordinates are based on Louisiana Coordinate System of 1927 (South Zone).

NOTE: The State of Louisiana does hereby reserve, and this lease shall be subject to, the imprescriptible right of surface use in the nature of a servitude in favor of the Department of Natural Resources, including its Offices and Commissions, for the sole purpose of implementing, constructing, servicing and maintaining approved coastal zone management and/or restoration projects. Utilization of any and all rights derived under this lease by the mineral lessee, its agents, successors or assigns, shall not interfere with nor hinder the reasonable surface use by the Department of Natural Resources, its Offices or Commissions, as hereinabove reserved.

Applicant: Thomas Sheridan

Bidder	Cash Payment	Price / Acre	Rental	Oil	Gas	Other



P.O.B.
X= 2,605,850.00
Y= 322,330.00

S.L. 16430

BLK. 22

S.L. 16431

S.L. 16432

TR 32424
711.09 + ACS.
MAR., 2000

BLK. 25

S.L. 14124

MAIN PASS AREA, REVISED
PLAQUEMINES PARISH

OFFICIAL COPY
OFFICE OF MINERAL RESOURCES
DEPT. OF NATURAL RESOURCES
DO NOT REMOVE

2000 0 2000 Feet

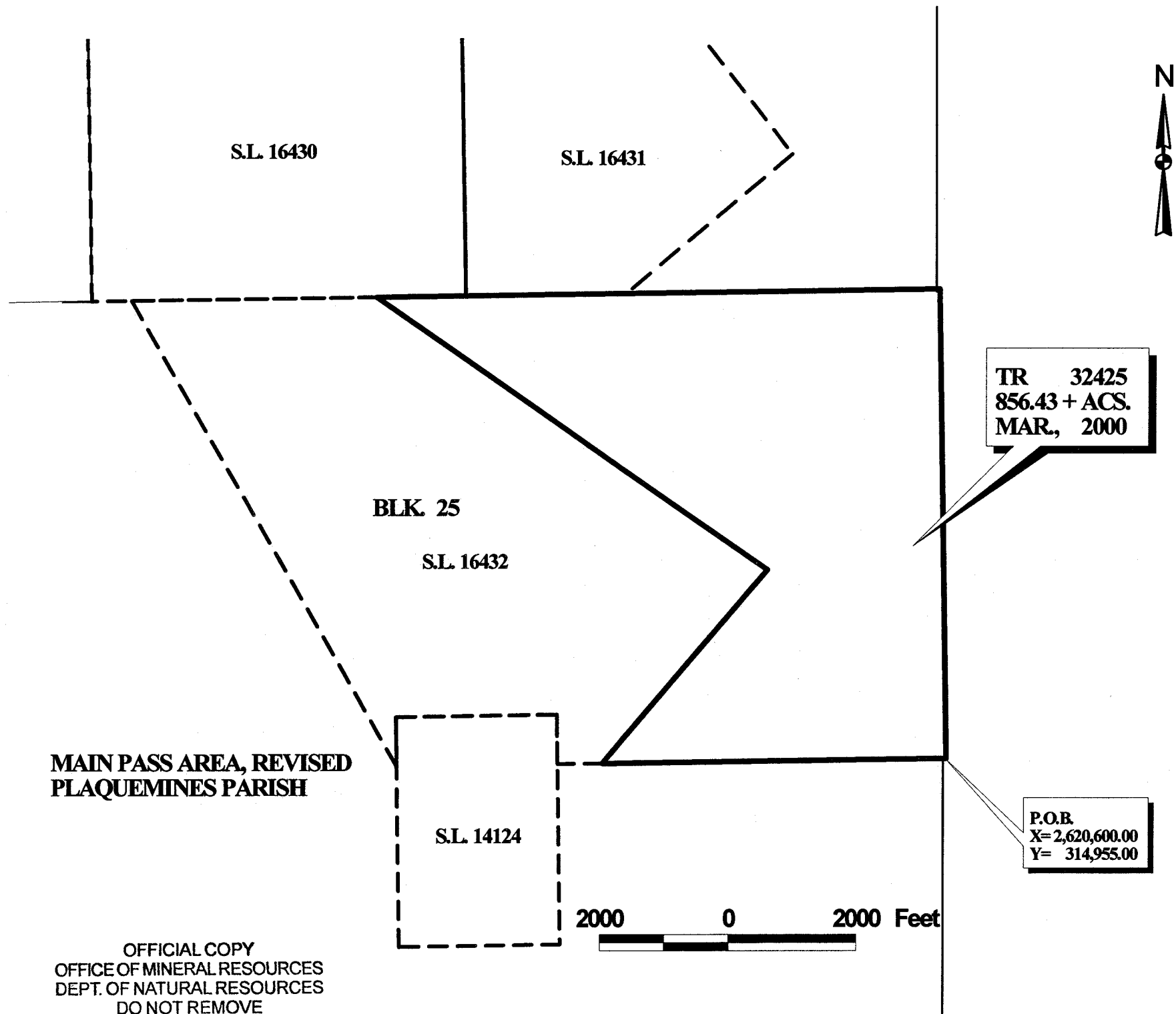
TRACT 32425 - PORTION OF BLOCK 25, MAIN PASS AREA, REVISED, Plaquemines Parish, Louisiana

All of the lands now or formerly constituting the beds and bottoms of all water bodies of every nature and description and all islands and other lands formed by accretion or reliction, except tax lands, belonging to the State of Louisiana and not under mineral lease on March 8, 2000, situated in Plaquemines Parish, Louisiana, and more particularly described as follows: Beginning at a point on the East line of Block 25, Main Pass Area, Revised, having Coordinates of X = 2,620,600.00 and Y = 314,955.00; thence North 7,375.00 feet along said East line of said Block 25 to its Northeast corner having Coordinates of X = 2,620,600.00 and Y = 322,330.00; thence West 8,750.00 feet along the North line of said Block 25 to a point being the Northeast corner of State Lease No. 16432 having Coordinates of X = 2,611,850.00 and Y = 322,330.00; thence with the Eastern boundary of said State Lease No. 16432 the following courses: South 53 degrees 54 minutes 06 seconds East 7,425.67 feet and South 40 degrees 54 minutes 52 seconds West 3,969.89 feet to a point having Coordinates of X = 2,615,250.00 and Y = 314,955.00; thence East 5,350.00 feet to the point of beginning, containing approximately 856.43 acres, as shown outlined in red on a plat on file in the Office of Mineral Resources, Department of Natural Resources. All bearings, distances and coordinates are based on Louisiana Coordinate System of 1927 (South Zone).

NOTE: The State of Louisiana does hereby reserve, and this lease shall be subject to, the imprescriptible right of surface use in the nature of a servitude in favor of the Department of Natural Resources, including its Offices and Commissions, for the sole purpose of implementing, constructing, servicing and maintaining approved coastal zone management and/or restoration projects. Utilization of any and all rights derived under this lease by the mineral lessee, its agents, successors or assigns, shall not interfere with nor hinder the reasonable surface use by the Department of Natural Resources, its Offices or Commissions, as hereinabove reserved.

Applicant: Thomas Sheridan

Bidder	Cash Payment	Price / Acre	Rental	Oil	Gas	Other



**MAIN PASS AREA, REVISED
PLAQUEMINES PARISH**

OFFICIAL COPY
OFFICE OF MINERAL RESOURCES
DEPT. OF NATURAL RESOURCES
DO NOT REMOVE

TRACT 32426 - PORTION OF BLOCK 24, MAIN PASS AREA, REVISED, Plaquemines Parish, Louisiana

All of the lands now or formerly constituting the beds and bottoms of all water bodies of every nature and description and all islands and other lands formed by accretion or reliction, except tax lands, belonging to the State of Louisiana and not under mineral lease on March 8, 2000, situated in Plaquemines Parish, Louisiana, and more particularly described as follows: Beginning at the Southeast corner of Block 24, Main Pass Area, Revised, having Coordinates of X = 2,605,850.00 and Y = 307,580.00; thence West approximately 12,038 feet to the Southwest corner of Block 24; thence along the Western boundary of Block 24 Northerly approximately 6,356 feet and Northeasterly approximately 1,755 feet to the most Westerly Southwest corner of State Lease No. 2410, as amended, having Coordinates of X = 2,594,385.24 and Y = 315,555.29; thence with the boundary of said State Lease No. 2410 the following courses: South 30 degrees 53 minutes 49 seconds East 1,313.28 feet; a curve to the right having a radius of 3,550.04 feet and a long chord of North 80 degrees 16 minutes 38 seconds East 572.92 feet, a curve to the right having a radius of 808.95 feet and a long chord of South 76 degrees 49 minutes 38 seconds East 578.50 feet, a curve to the right having a radius of 690.21 feet and a long chord of South 25 degrees 56 minutes 46 seconds East 315.55 feet, a curve to the left having a radius of 1,408.49 feet and a long chord of South 35 degrees 12 minutes 24 seconds East 1,203.33 feet, a curve to the left having a radius of 1,071.10 feet and a long chord of North 83 degrees 50 minutes 11 seconds East 1,019.43 feet, a curve to the right having a radius of 4,683.26 feet and a long chord of North 58 degrees 49 minutes 15 seconds East 826.40 feet, a curve to the right having a radius of 1,070.00 feet and a long chord of North 82 degrees 19 minutes 12 seconds East 420.48 feet, a curve to the right having a radius of 1,500.00 feet and a long chord of South 71 degrees 46 minutes 29 seconds East 422.09 feet, a curve to the right having a radius of 3,000.00 feet and a long chord of South 62 degrees 06 minutes 14 seconds East 486.80 feet, a curve to the left having a radius of 643.86 feet and a long chord of South 89 degrees 54 minutes 39 seconds East 660.06 feet, a curve to the left having a radius of 505.42 feet and a long chord of North 14 degrees 20 minutes 59 seconds East 622.74 feet, a curve to the left having a radius of 1,500.00 feet and a long chord of North 32 degrees 43 minutes 48 seconds West 715.26 feet, a curve to the left having a radius of 1,250.00 feet and a long chord of North 62 degrees 03 minutes 13 seconds West 634.80 feet, a curve to the right having a radius of 1,375.00 feet and a long chord of North 72 degrees 48 minutes 11 seconds West 316.13 feet to a point having Coordinates of X = 2,599,552.69 and Y = 314,955.00; thence East 6,297.31 feet to a point on the East line of Block 24 having Coordinates of X = 2,605,850.00 and Y = 314,955.00; thence South 7,375.00 feet to the point of beginning, **LESS AND EXCEPT**, if any, that portion of State Lease No. 195, as amended, that may lie within the above described tract, containing approximately 1,880 acres, as shown outlined in red on a plat on file in the Office of Mineral Resources, Department of Natural Resources. All bearings, distances and coordinates are based on Louisiana Coordinate System of 1927 (South Zone).

NOTE: The State of Louisiana does hereby reserve, and this lease shall be subject to, the imprescriptible right of surface use in the nature of a servitude in favor of the Department of Natural Resources, including its Offices and Commissions, for the sole purpose of implementing, constructing, servicing and maintaining approved coastal zone management and/or restoration projects. Utilization of any and all rights derived under this lease by the mineral lessee,

its agents, successors or assigns, shall not interfere with nor hinder the reasonable surface use by the Department of Natural Resources, its Offices or Commissions, as hereinabove reserved.

Applicant: Thomas Sheridan

Bidder	Cash Payment	Price / Acre	Rental	Oil	Gas	Other



S.L. 16592

S.L. 16406

S.L. 2410

BLK. 25

BLK. 24

TR 32426
1,880 +ACS.
MAR, 2000

S.L. 195

P.O.B
X= 2,605,850.00
Y= 307,580.00

MAIN PASS AREA, REVISED
PLAQUEMINES PARISH

BLK. 33

2000 0 2000 Feet

OFFICIAL COPY
OFFICE OF MINERAL RESOURCES
DEPT. OF NATURAL RESOURCES
DO NOT REMOVE