

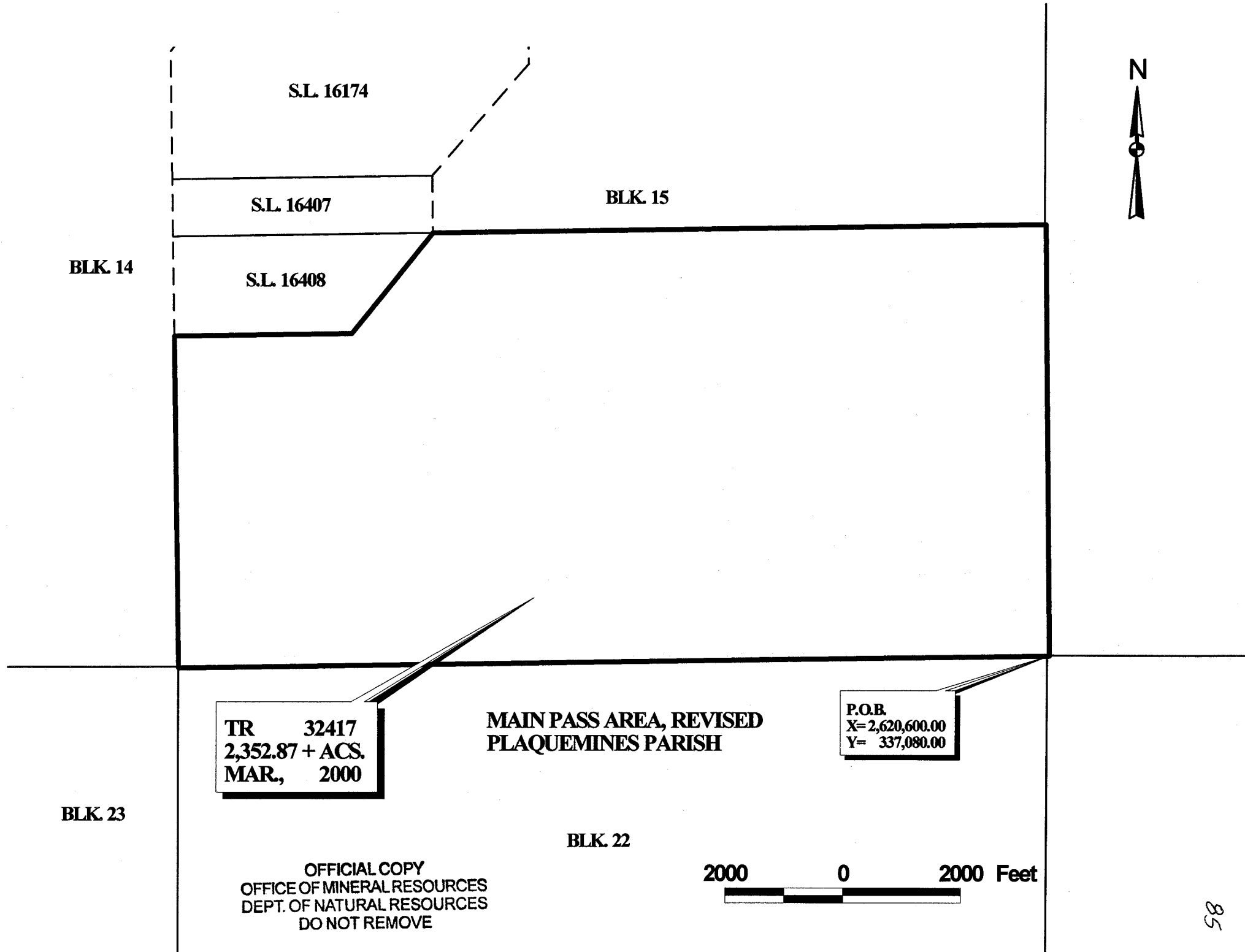
TRACT 32417 - PORTION OF BLOCK 15, MAIN PASS AREA, REVISED, Plaquemines Parish, Louisiana

All of the lands now or formerly constituting the beds and bottoms of all water bodies of every nature and description and all islands and other lands formed by accretion or reliction, except tax lands, belonging to the State of Louisiana and not under mineral lease on March 8, 2000, situated in Plaquemines Parish, Louisiana, and more particularly described as follows: Beginning at the Southeast corner of Block 15, Main Pass Area, Revised, having Coordinates of X = 2,620,600.00 and Y = 337,080.00; thence West 14,750.00 feet along the South line of said Block 15 to its Southwest corner; thence North 5,675.00 feet along the West line of said Block 15 to the Southwest corner of State Lease No. 16408 to a point having Coordinates of X = 2,605,850.00 and Y = 342,755.00; thence along the boundaries of said State Lease No. 16408 the following courses: East 3,000.00 feet and North 39 degrees 28 minutes 21 seconds East 2,202.27 feet to the Northeast corner of said State Lease No. 16408 having Coordinates of X = 2,610,250.00 and Y = 344,455.00; thence East 10,350.00 feet to a point on the East line of said Block 15 having Coordinates of X = 2,620,600.00 and Y = 344,455.00; thence South 7,375.00 feet along said East line of said Block 15 to the point of beginning, containing approximately 2,352.87 acres, as shown outlined in red on a plat on file in the Office of Mineral Resources, Department of Natural Resources. All bearings, distances and coordinates are based on Louisiana Coordinate System of 1927 (South Zone).

NOTE: The State of Louisiana does hereby reserve, and this lease shall be subject to, the imprescriptible right of surface use in the nature of a servitude in favor of the Department of Natural Resources, including its Offices and Commissions, for the sole purpose of implementing, constructing, servicing and maintaining approved coastal zone management and/or restoration projects. Utilization of any and all rights derived under this lease by the mineral lessee, its agents, successors or assigns, shall not interfere with nor hinder the reasonable surface use by the Department of Natural Resources, its Offices or Commissions, as hereinabove reserved.

Applicant: Thomas Sheridan

Bidder	Cash Payment	Price / Acre	Rental	Oil	Gas	Other



S.L. 16174

S.L. 16407

BLK. 15

BLK. 14

S.L. 16408



TR 32417
2,352.87 + ACS.
MAR., 2000

MAIN PASS AREA, REVISED
PLAQUEMINES PARISH

P.O.B.
X=2,620,600.00
Y= 337,080.00

BLK. 23

BLK. 22

OFFICIAL COPY
OFFICE OF MINERAL RESOURCES
DEPT. OF NATURAL RESOURCES
DO NOT REMOVE

2000 0 2000 Feet

