

TRACT 44841 - De Soto Parish, Louisiana

All of the lands now or formerly constituting the beds and bottoms of all water bodies of every nature and description as to which title is vested in the State of Louisiana, together with all islands arising therein and other lands formed by accretion or by reliction, where allowed by law, excepting tax adjudicated lands, and not presently under mineral lease on February 14, 2018, situated in De Soto Parish, Louisiana, and more particularly described as follows: Beginning at a point being an interior corner on the Western boundary of State Lease No. 20721, Area A, as amended, having Coordinates of X = 1,713,694.97 and Y = 472,171.03; thence South 01 degrees 18 minutes 14 seconds West 5,300.17 feet along the boundary of said State Lease No. 20721, Area A, as amended, to a point being the Northeast corner of State Lease No. 20721, Area B, as amended, having Coordinates of X = 1,713,574.37 and Y = 466,872.23; thence North 89 degrees 13 minutes 56 seconds West 5,258.35 feet along the Northern boundary of said State Lease No. 20721, Area B, as amended, to a point being its Northwest corner having Coordinates of X = 1,708,316.49 and Y = 466,942.70; thence West approximately 13 feet to a point on the Eastern boundary of State Lease No. 7029, as amended; thence Northerly approximately 5,057 feet to a point of intersection with the South line of State Lease No. 15500 having a Coordinate of Y = 472,000.00; thence along the boundary of said State Lease No. 15500 the following courses: East approximately 2,136 feet to its Southeast corner having Coordinates of X = 1,710,500.00 and Y = 472,000.00 and North 205 feet to a point being the Northernmost Southwest corner of said State Lease No. 20721, Area A, having Coordinates of X = 1,710,500.00 and Y = 472,205.00; thence South 89 degrees 23 minutes 27 seconds East 3,195.15 feet along the boundary of said State Lease No. 20721, Area A, as amended, to the point of beginning, **LESS AND EXCEPT** any portion of State Lease No. 7029 that may lie within the above described tract, containing approximately **6 acres**, all as more particularly outlined on a plat on file in the Office of Mineral Resources, Department of Natural Resources. All bearings, distances and coordinates are based on Louisiana Coordinate System of 1927, (North or South Zone), where applicable.

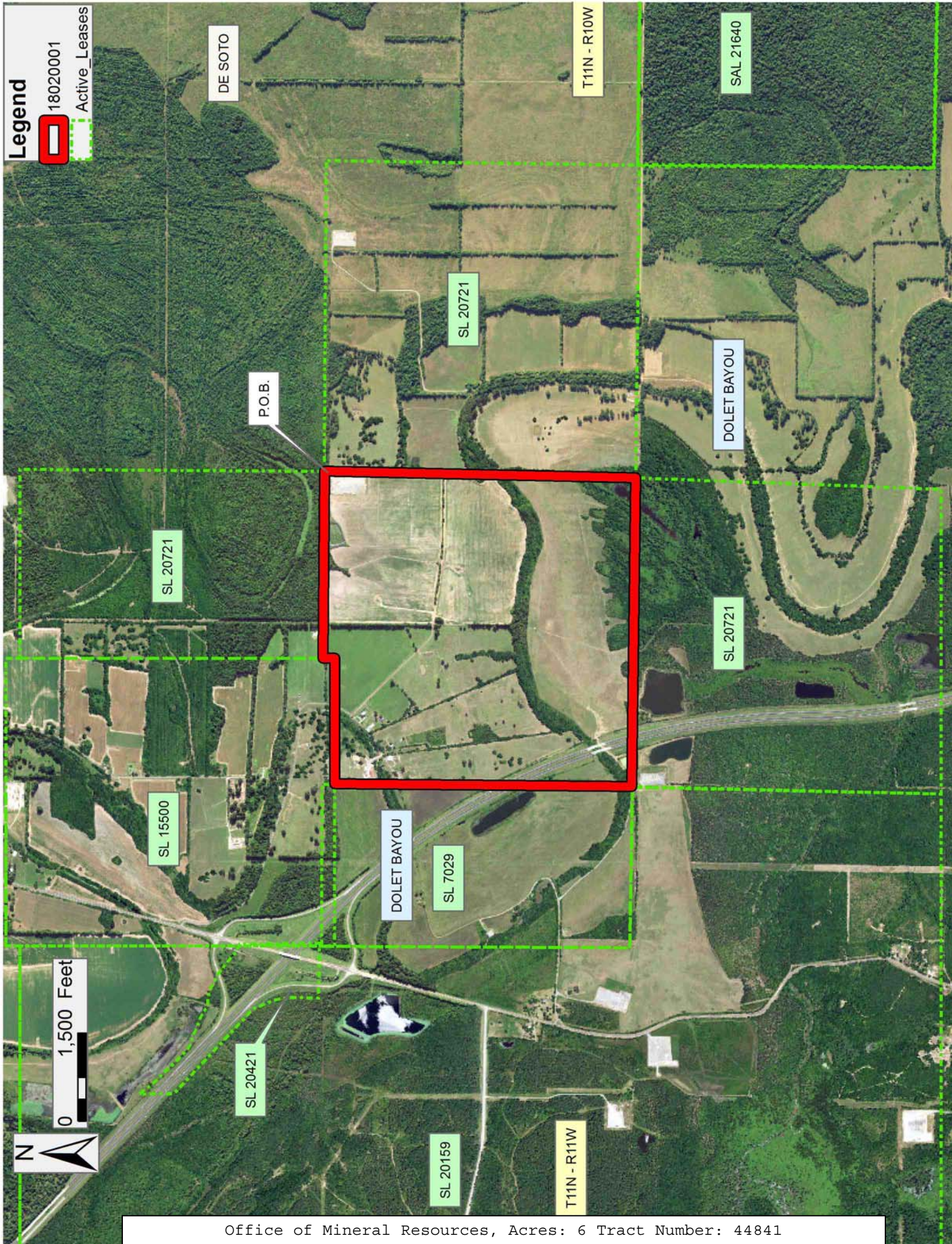
NOTE: The above description of the Tract nominated for the purpose of acquiring a mineral lease or a geophysical agreement has been provided and corrected, where required, exclusively by the nominating party. Any mineral lease or geophysical agreement selected from this Tract and awarded by the Louisiana State Mineral and Energy Board shall be without warranty of any kind, either express, implied or statutory including, but not limited to, title or the implied warranties of merchantability and fitness for a particular purpose.

An error or omission in the nominating party's Tract description may require that a State mineral lease or geophysical agreement be modified, canceled or abrogated due to the existence of conflicting leases, operating agreements, private claims or other future obligations or conditions within the Tract described. In such case, however, the

Louisiana State Mineral and Energy Board shall not be obligated to refund any consideration paid by the Lessee prior to such modification, cancellation or abrogation including, but not limited to, bonuses, rentals and royalties.

Applicant: ARMORY EXPLORATION

Bidder	Cash Payment	Price/ Acre	Rental	Oil	Gas	Other



TRACT 44842 - De Soto and Natchitoches Parishes, Louisiana

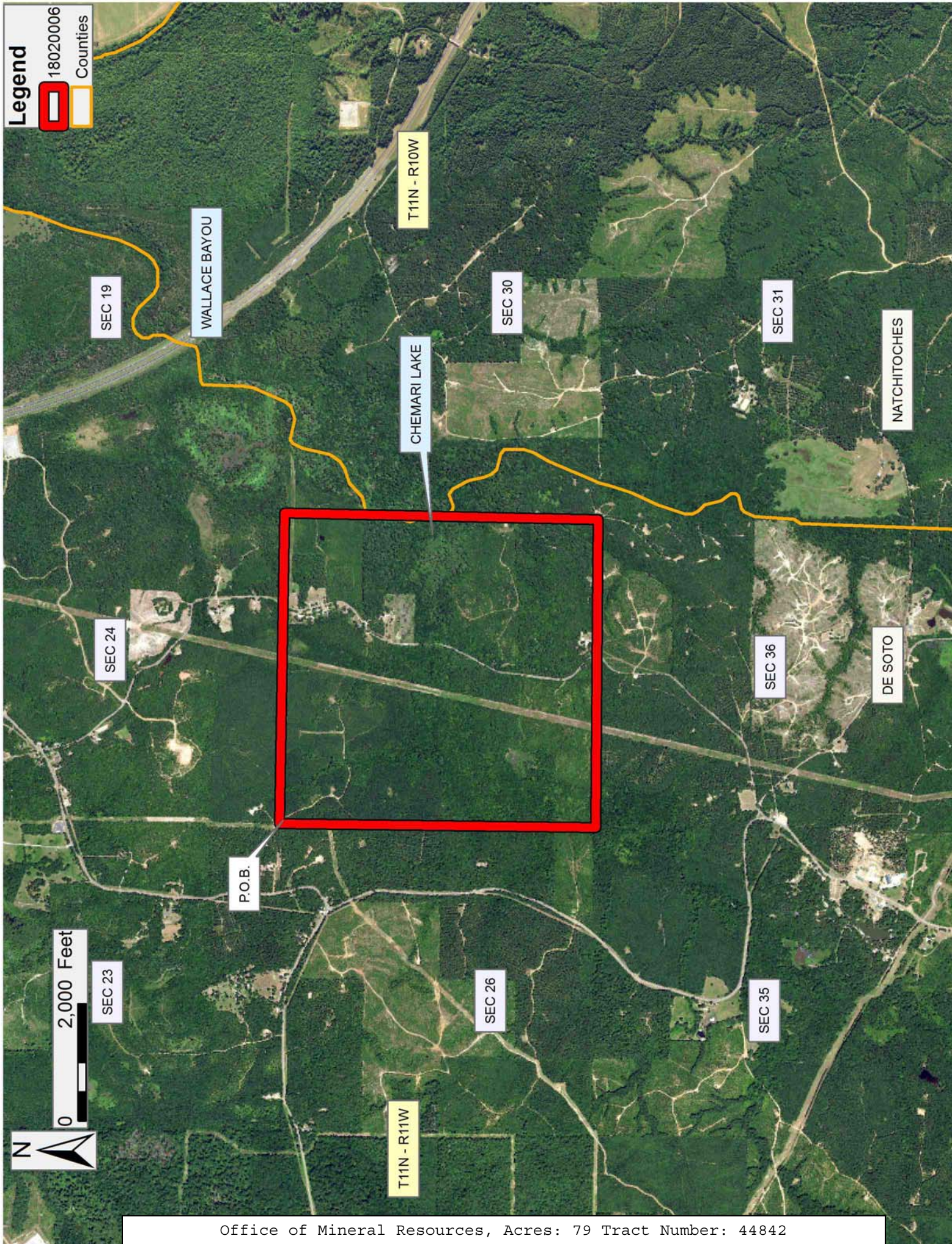
All of the lands now or formerly constituting the beds and bottoms of all water bodies of every nature and description as to which title is vested in the State of Louisiana, together with all islands arising therein and other lands formed by accretion or by reliction, where allowed by law, excepting tax adjudicated lands, and not presently under mineral lease on February 14, 2018, situated in De Soto and Natchitoches Parishes, Louisiana, and more particularly described as follows: Beginning at a point having Coordinates of X = 1,702,916.74 and Y = 456,439.64; thence South 89 degrees 05 minutes 07 seconds East 5,293.20 feet to a point having Coordinates of X = 1,708,209.27 and Y = 456,355.14; thence South 01 degrees 11 minutes 30 seconds West 5,343.37 feet to a point having Coordinates of X = 1,708,098.14 and Y = 451,012.92.; thence North 89 degrees 34 minutes 33 seconds West 5,250.48 feet to a point having Coordinates of X = 1,702,847.81 and Y = 451,051.80; thence North 00 degrees 43 minutes 59 seconds East 5,388.29 feet to the point of beginning, containing approximately **79 acres**, all as more particularly outlined on a plat on file in the Office of Mineral Resources, Department of Natural Resources. All bearings, distances and coordinates are based on Louisiana Coordinate System of 1927, (North or South Zone), where applicable.

NOTE: The above description of the Tract nominated for the purpose of acquiring a mineral lease or a geophysical agreement has been provided and corrected, where required, exclusively by the nominating party. Any mineral lease or geophysical agreement selected from this Tract and awarded by the Louisiana State Mineral and Energy Board shall be without warranty of any kind, either express, implied or statutory including, but not limited to, title or the implied warranties of merchantability and fitness for a particular purpose.

An error or omission in the nominating party's Tract description may require that a State mineral lease or geophysical agreement be modified, canceled or abrogated due to the existence of conflicting leases, operating agreements, private claims or other future obligations or conditions within the Tract described. In such case, however, the Louisiana State Mineral and Energy Board shall not be obligated to refund any consideration paid by the Lessee prior to such modification, cancellation or abrogation including, but not limited to, bonuses, rentals and royalties.

Applicant: CYPRESS ENERGY CORPORATION

Bidder	Cash Payment	Price/ Acre	Rental	Oil	Gas	Other



TRACT 44843 - St. Martin Parish, Louisiana

All of the lands now or formerly constituting the beds and bottoms of all water bodies of every nature and description as to which title is vested in the State of Louisiana, together with all islands arising therein and other lands formed by accretion or by reliction, where allowed by law, excepting tax adjudicated lands, and not presently under mineral lease on February 14, 2018, situated in St. Martin Parish, Louisiana, and more particularly described as follows: Beginning at a point having Coordinates of X = 1,926,806.00 and Y = 559,503.00; thence East 18,480.00 feet to a point having Coordinates of X = 1,945,286.00 and Y = 559,503.00; thence South 18,480.00 feet to a point having Coordinates of X = 1,945,286.00 and Y = 541,023.00; thence West 18,480.00 feet to a point having Coordinates of X = 1,926,806.00 and Y = 541,023.00; thence North 18,480.00 feet to the point of beginning, **LESS AND EXCEPT** any right, title, and interest in lands owned by and not under lease from the State of Louisiana, on behalf of the St. Martin Parish School Board, situated in Section 16, Township 10 South, Range 9 East, St. Martin Parish, Louisiana, contained within the above described tract, (This lease includes only waterbottoms claimed and owned by the state and specifically excludes any land which the state may claim or own and to which the mineral rights are vested in the state), containing approximately **1,910 acres**, all as more particularly outlined on a plat on file in the Office of Mineral Resources, Department of Natural Resources. All bearings, distances and coordinates are based on Louisiana Coordinate System of 1927, (North or South Zone), where applicable.

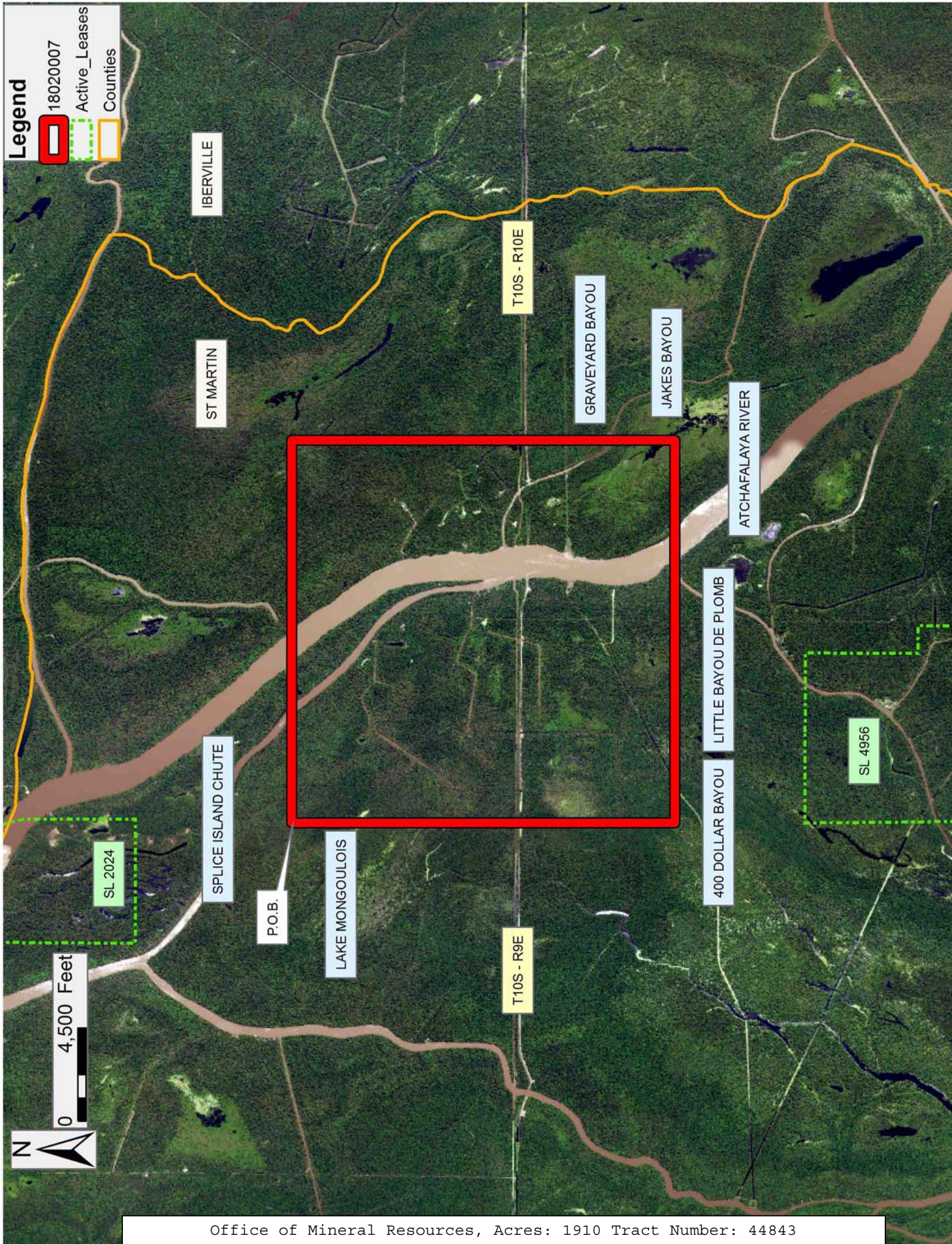
NOTE: The above description of the Tract nominated for the purpose of acquiring a mineral lease or a geophysical agreement has been provided and corrected, where required, exclusively by the nominating party. Any mineral lease or geophysical agreement selected from this Tract and awarded by the Louisiana State Mineral and Energy Board shall be without warranty of any kind, either express, implied or statutory including, but not limited to, title or the implied warranties of merchantability and fitness for a particular purpose.

An error or omission in the nominating party's Tract description may require that a State mineral lease or geophysical agreement be modified, canceled or abrogated due to the existence of conflicting leases, operating agreements, private claims or other future obligations or conditions within the Tract described. In such case, however, the Louisiana State Mineral and Energy Board shall not be obligated to refund any consideration paid by the Lessee prior to such modification, cancellation or abrogation including, but not limited to, bonuses, rentals and royalties.

NOTE: This acreage is entirely within the boundary of the Atchafalaya Basin Legal Area.

Applicant: HAROLD J. ANDERSON, INC.

Bidder	Cash Payment	Price/ Acre	Rental	Oil	Gas	Other



TRACT 44844 - Lafourche and Terrebonne Parishes, Louisiana

All of the lands now or formerly constituting the beds and bottoms of all water bodies of every nature and description as to which title is vested in the State of Louisiana, together with all islands arising therein and other lands formed by accretion or by reliction, where allowed by law, excepting tax adjudicated lands, and not presently under mineral lease on February 14, 2018, situated in Lafourche and Terrebonne Parishes, Louisiana, and more particularly described as follows: Beginning at a point having Coordinates of X = 2,294,277.26 and Y = 206,306.00; thence North 9,721.00 feet to a point having Coordinates of X = 2,294,277.26 and Y = 216,027.00; thence East 11,722.74 feet to a point having Coordinates of X = 2,306,000.00 and Y = 216,027.00; thence South 9,721.00 feet to a point having Coordinates of X = 2,306,000.00 and Y = 206,306.00; thence West 11,722.74 feet to the point of beginning, **LESS AND EXCEPT** all that portion of State Lease No. 21620 which lies entirely within the above described tract, being more fully described as follows: Commencing at a point being the point of beginning of the above described nominated tract having Coordinates of X = 2,294,277.26 and Y = 206,306.00; thence North 44 degrees 04 minutes 20 seconds East 7,233.81 feet to a point being the point of beginning of said State Lease No. 21620 having Coordinates of X = 2,299,308.84 and Y = 211,503.23; thence along the boundary of said State Lease No. 21620 the following courses: North 82 degrees 59 minutes 16 seconds East 1,009.26 feet to a point having Coordinates of X = 2,300,310.55 and Y = 211,626.44, North 60 degrees 31 minutes 27 seconds East 1,363.57 feet to a point having Coordinates of X = 2,301,497.62 and Y = 212,297.39, South 89 degrees 39 minutes 22 seconds East 1,294.74 feet to a point having Coordinates of X = 2,302,792.34 and Y = 212,289.62, South 72 degrees 28 minutes 53 seconds East 460.91 feet to a point having Coordinates of X = 2,303,231.87 and Y = 212,150.88, South 27 degrees 30 minutes 15 seconds West 1,468.47 feet to a point having Coordinates of X = 230,255,371.00 and Y = 210,848.38, South 40 degrees 08 minutes 16 seconds West 2,893.51 feet to a point having Coordinates of X = 2,300,688.48 and Y = 208,636.30, North 66 degrees 32 minutes 44 seconds West 2,168.13 feet to a point having Coordinates of X = 2,298,699.49 and Y = 209,499.26, and North 16 degrees 54 minutes 47 seconds East 2,094.57 feet to a point of beginning, the nominated tract containing approximately **2,248 acres**, all as more particularly outlined on a plat on file in the Office of Mineral Resources, Department of Natural Resources. All bearings, distances and coordinates are based on Louisiana Coordinate System of 1927, (North or South Zone), where applicable.

NOTE: The above description of the Tract nominated for the purpose of acquiring a mineral lease or a geophysical agreement has been provided and corrected, where required, exclusively by the nominating party. Any mineral lease or geophysical agreement selected from this Tract and awarded by the Louisiana State Mineral and Energy Board shall be without warranty of any kind, either express, implied or statutory including, but

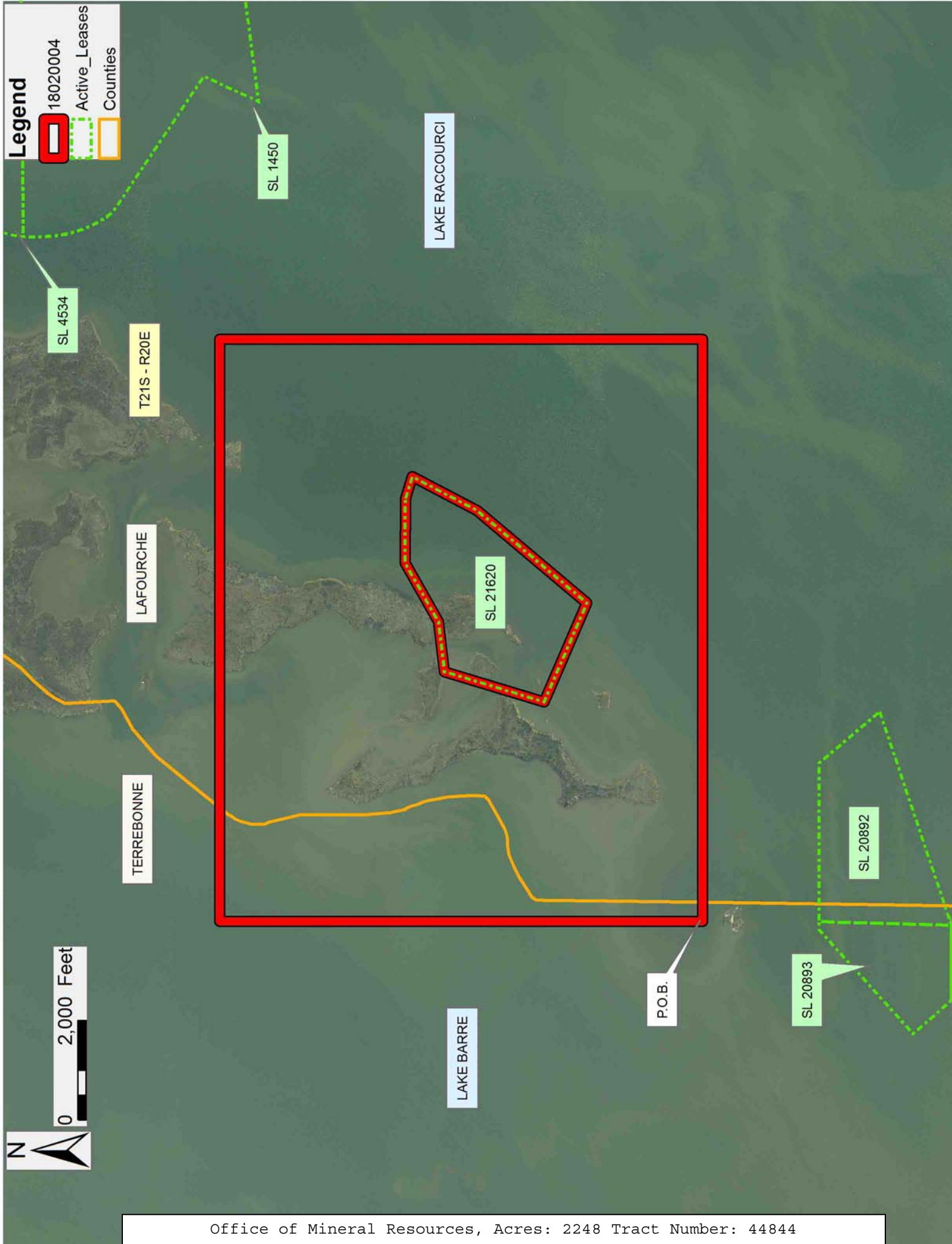
not limited to, title or the implied warranties of merchantability and fitness for a particular purpose.

An error or omission in the nominating party's Tract description may require that a State mineral lease or geophysical agreement be modified, canceled or abrogated due to the existence of conflicting leases, operating agreements, private claims or other future obligations or conditions within the Tract described. In such case, however, the Louisiana State Mineral and Energy Board shall not be obligated to refund any consideration paid by the Lessee prior to such modification, cancellation or abrogation including, but not limited to, bonuses, rentals and royalties.

NOTE: The State of Louisiana does hereby reserve, and this lease shall be subject to, the imprescriptible right of surface use in the nature of a servitude in favor of the Department of Natural Resources, including its Offices and Commissions, for the sole purpose of implementing, constructing, servicing and maintaining approved coastal zone management and/or restoration projects. Utilization of any and all rights derived under this lease by the mineral lessee, its agents, successors or assigns, shall not interfere with nor hinder the reasonable surface use by the Department of Natural Resources, its Offices or Commissions, as herein above reserved.

Applicant: ROBERT A. SCHROEDER, INC.

Bidder	Cash Payment	Price/ Acre	Rental	Oil	Gas	Other



TRACT 44845 - Lafourche and Terrebonne Parishes, Louisiana

All of the lands now or formerly constituting the beds and bottoms of all water bodies of every nature and description as to which title is vested in the State of Louisiana, together with all islands arising therein and other lands formed by accretion or by reliction, where allowed by law, excepting tax adjudicated lands, and not presently under mineral lease on February 14, 2018, situated in Lafourche and Terrebonne Parishes, Louisiana, and more particularly described as follows: Beginning at a point having Coordinates of X = 2,294,277.26 and Y = 206,306.00; thence East 11,722.74 feet to a point having Coordinates of X = 2,306,000.00 and Y = 206,306.00; thence South 8,798.72 feet to a point having Coordinates of X = 2,306,000.00 and Y = 197,507.28, said point being on the Northern boundary of State Lease No. 1480, as amended; thence along the boundary of said State Lease No. 1480, as amended, the following courses: South 68 degrees 11 minutes 55 seconds West 48.65 feet to a point having Coordinates of X = 2,305,954.83 and Y = 197,489.21, South 68 degrees 11 minutes 55 seconds West 851.53 feet to a point having Coordinates of X = 2,305,164.20 and Y = 197,172.96, South 64 degrees 51 minutes 17 seconds West 713.27 feet to a point having Coordinates of X = 2,304,518.52 and Y = 196,869.88, South 63 degrees 06 minutes 14 seconds West 901.62 feet to a point having Coordinates of X = 2,303,714.43 and Y = 196,462.01, and South 00 degrees 29 minutes 42 seconds East 522.01 feet to a point having Coordinates of X = 2,303,718.94 and Y = 195,940.02, said point being the Southwest corner of said State Lease No. 1480, as amended, said point also being on the Northern boundary of State Lease No. 3599, as amended; thence along the boundary of said State Lease No. 3599, as amended, the following courses: South 89 degrees 30 minutes 18 seconds West 870.00 feet to a point having Coordinates of X = 2,302,848.97 and Y = 195,932.51, North 00 degrees 29 minutes 42 seconds West 405.00 feet to a point having Coordinates of X = 2,302,845.47 and Y = 196,337.49, and South 89 degrees 30 minutes 18 seconds West 4,416.01 feet to a point having Coordinates of X = 2,298,429.62 and Y = 196,299.34, said point being the Northwest corner of said State Lease No. 3599, as amended; thence West 4,224.98 feet to a point having Coordinates of X = 2,294,204.64 and Y = 196,299.34; thence North 5,000.01 feet to a point having Coordinates of X = 2,294,204.64 and Y = 201,299.35, said point being the Northeast corner of State Lease No. 20894, as amended, also being the Southeast corner of State Lease No. 20893, as amended, and also being the Southwest corner of State Lease No. 20892, as amended; thence along the boundary of said State Lease No. 20892, as amended, the following courses: North 71 degrees 27 minutes 47 seconds East 4,532.48 feet to a point having Coordinates of X = 2,298,501.97 and Y = 202,740.30, North 40 degrees 14 minutes 40 seconds West 1,600.00 feet to a point having Coordinates of X = 2,297,468.29 and Y = 203,961.57, and West 3,191.03 feet to a point being its Northwest corner having Coordinates of X = 2,294,277.26 and Y = 203,961.57, said point also being the Northeast corner of said State Lease No. 20893, as amended; thence North 2,344.43 feet to the point of beginning, (This lease

includes only waterbottoms claimed and owned by the state and specifically excludes any land which the state may claim or own and to which the mineral rights are vested in the state), containing approximately **2,452 acres**, all as more particularly outlined on a plat on file in the Office of Mineral Resources, Department of Natural Resources. All bearings, distances and coordinates are based on Louisiana Coordinate System of 1927, (North or South Zone), where applicable.

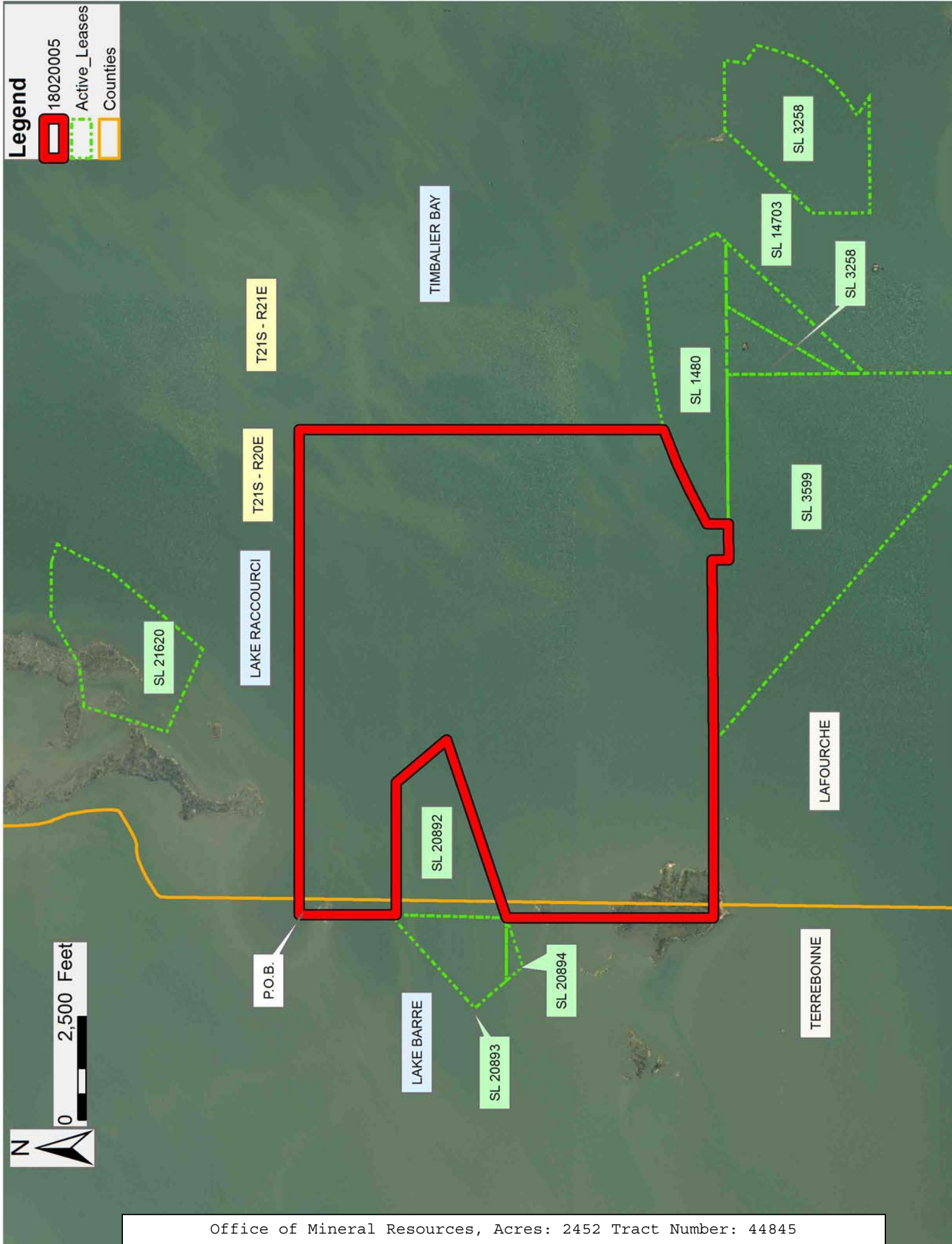
NOTE: The above description of the Tract nominated for the purpose of acquiring a mineral lease or a geophysical agreement has been provided and corrected, where required, exclusively by the nominating party. Any mineral lease or geophysical agreement selected from this Tract and awarded by the Louisiana State Mineral and Energy Board shall be without warranty of any kind, either express, implied or statutory including, but not limited to, title or the implied warranties of merchantability and fitness for a particular purpose.

An error or omission in the nominating party's Tract description may require that a State mineral lease or geophysical agreement be modified, canceled or abrogated due to the existence of conflicting leases, operating agreements, private claims or other future obligations or conditions within the Tract described. In such case, however, the Louisiana State Mineral and Energy Board shall not be obligated to refund any consideration paid by the Lessee prior to such modification, cancellation or abrogation including, but not limited to, bonuses, rentals and royalties.

NOTE: The State of Louisiana does hereby reserve, and this lease shall be subject to, the imprescriptible right of surface use in the nature of a servitude in favor of the Department of Natural Resources, including its Offices and Commissions, for the sole purpose of implementing, constructing, servicing and maintaining approved coastal zone management and/or restoration projects. Utilization of any and all rights derived under this lease by the mineral lessee, its agents, successors or assigns, shall not interfere with nor hinder the reasonable surface use by the Department of Natural Resources, its Offices or Commissions, as herein above reserved.

Bidder	Cash Payment	Price/ Acre	Rental	Oil	Gas	Other

Applicant: ROBERT A. SCHROEDER, INC.



TRACT 44846 - Portion of Blocks 113, 114, and 118, South Timbalier Area, Revised, Terrebonne Parish, Louisiana

All of the lands now or formerly constituting the beds and bottoms of all water bodies of every nature and description as to which title is vested in the State of Louisiana, together with all islands arising therein and other lands formed by accretion or by reliction, where allowed by law, excepting tax adjudicated lands, and not presently under mineral lease on February 14, 2018, situated in Terrebonne Parish, Louisiana, and more particularly described as follows: Beginning at a point having Coordinates of X = 2,221,190.83 and Y = 173,215.08, said point being the Northwest corner of State Lease No. 21109; thence South 89 degrees 39 minutes 53 seconds West 748.77 feet to a point having Coordinates of X = 2,220,442.07 and Y = 173,210.70, said point being the Southeast corner of said State Lease No. 21728; thence North 00 degrees 21 minutes 25 seconds West approximately 2,900 feet along the Eastern boundary of said State Lease No. 21728, to a point being the Northeast corner of said State Lease No. 21728, said point also being on the Eastern boundary of State Lease No. 199, as amended; thence North 65 degrees 13 minutes 40 seconds East approximately 100 feet along said Eastern boundary of said State Lease No. 199, as amended, to a point having Coordinates of X = 2,220,515.12 and Y = 176,152.05, said point being on the Western boundary of State Lease No. 21437; thence along the Western, Southern, Eastern and Northern boundaries of said State Lease No. 21437 the following courses: South 22 degrees 39 minutes 43 seconds East 869.15 feet to a point having Coordinates of X = 2,220,850.00 and Y = 175,350.00, South 88 degrees 11 minutes 46 seconds East 635.31 feet to a point having Coordinates of X = 2,221,485.00 and Y = 175,330.00, North 28 degrees 56 minutes 09 seconds East 1,405.45 feet to a point having Coordinates of X = 2,222,165.00 and Y = 176,560.00, North 47 degrees 02 minutes 20 seconds West 1,093.17 feet to a point having Coordinates of X = 2,221,365.00 and Y = 177,305.00, and South 43 degrees 02 minutes 45 seconds West 360.13 feet to a point having Coordinates of X = 2,221,119.18 and Y = 177,041.82, said point being on said Eastern boundary of said State Lease No. 199, as amended; thence along said Eastern boundary of said State Lease No. 199, as amended, the following courses: North 07 degrees 04 minutes 55 seconds East 702.76 feet to a point having Coordinates of X = 2,221,205.82 and Y = 177,739.21; North 37 degrees 39 minutes 55 seconds East 950.00 feet to a point having Coordinates of X = 2,221,786.32 and Y = 178,491.23, North 36 degrees 39 minutes 55 seconds East 815.00 feet to a point having Coordinates of X = 2,222,272.99 and Y = 179,144.97, North 02 degrees 20 minutes 05 seconds West 395.00 feet to a point having Coordinates of X = 2,222,256.89 and Y = 179,539.64, North 00 degrees 20 minutes 05 seconds West 1,950.00 feet to a point having Coordinates of X = 2,222,245.50 and Y = 181,489.61, North 17 degrees 19 minutes 55 seconds East 871.00 feet to a point having Coordinates of X = 2,222,504.98 and Y = 182,321.06, North 57 degrees 41 minutes 55 seconds East 2,761.19 feet to a point having Coordinates of X = 2,224,838.87 and Y = 183,796.57, North 89 degrees 39 minutes 54 seconds East 246.23

feet to a point having Coordinates of X = 2,225,085.10 and Y = 183,798.01; and North 57 degrees 41 minutes 54 seconds East 678.03 feet to a point having Coordinates of X = 2,225,658.20 and Y = 184,160.33, thence North 89 degrees 39 minutes 55 seconds East 5,139.87 feet to a point having Coordinates of X = 2,230,797.98 and Y = 184,190.36; thence South 00 degrees 20 minutes 05 seconds East 10,918.97 feet to a point having Coordinates of X = 2,230,861.77 and Y = 173,271.58; thence North 89 degrees 39 minutes 55 seconds West 5,139.87 feet to a point having Coordinates of X = 2,225,721.99 and Y = 173,241.55, said point being the Northeast corner of said State Lease No. 21109; thence North 89 degrees 39 minutes 55 seconds West 4,531.24 feet along the Northern boundary of said State Lease No. 21109 to the point of beginning, containing approximately **2,211 acres**, all as more particularly outlined on a plat on file in the Office of Mineral Resources, Department of Natural Resources. All bearings, distances and coordinates are based on Louisiana Coordinate System of 1927, (North or South Zone), where applicable.

NOTE: The above description of the Tract nominated for the purpose of acquiring a mineral lease or a geophysical agreement has been provided and corrected, where required, exclusively by the nominating party. Any mineral lease or geophysical agreement selected from this Tract and awarded by the Louisiana State Mineral and Energy Board shall be without warranty of any kind, either express, implied or statutory including, but not limited to, title or the implied warranties of merchantability and fitness for a particular purpose.

An error or omission in the nominating party's Tract description may require that a State mineral lease or geophysical agreement be modified, canceled or abrogated due to the existence of conflicting leases, operating agreements, private claims or other future obligations or conditions within the Tract described. In such case, however, the Louisiana State Mineral and Energy Board shall not be obligated to refund any consideration paid by the Lessee prior to such modification, cancellation or abrogation including, but not limited to, bonuses, rentals and royalties.

NOTE: The Office of Mineral Resources will require a minimum bonus of \$225 per acre and a minimum royalty of 22.5%.

NOTE: The State of Louisiana does hereby reserve, and this lease shall be subject to, the imprescriptible right of surface use in the nature of a servitude in favor of the Department of Natural Resources, including its Offices and Commissions, for the sole purpose of implementing, constructing, servicing and maintaining approved coastal zone management and/or restoration projects. Utilization of any and all rights derived under this lease by the mineral lessee, its agents, successors or assigns, shall not interfere with nor hinder the reasonable surface use by the

Department of Natural Resources, its Offices or Commissions, as herein above reserved.

NOTE: It appears, according to our records, that a portion of this Tract is located within the restrictive safety fairway area as set out by the Corps of Engineers, U.S. Army and/or the restrictive anchorage area as set out by the U.S. Coast Guard.

Applicant: STAFF OFFICE OF MINERAL RESOURCES

Bidder	Cash Payment	Price/ Acre	Rental	Oil	Gas	Other

Legend

18020008

Blocks

Active_Leases

