

TRACT 38094 - Plaquemines Parish, Louisiana

All State owned lands and water bottoms located within the boundaries of the Pass-A-Loutre Wildlife Management Area as defined by the Department of Wildlife and Fisheries incorporating a title opinion from the Office of the Governor dated August 3, 1998, not presently under mineral lease by the State of Louisiana on February 8, 2006, all as set forth following: Beginning at a point having Coordinates of X = 2,704,715.69 and Y = 179,654.31; thence East 8,700.00 feet to a point having Coordinates of X = 2,713,415.69 and Y = 179,654.31; thence South to a point on the Northern boundary of State Lease No. 2091, as amended; thence Westerly, Northeasterly, Westerly, and Southwesterly, along the boundary of said State Lease No. 2091, to the Northeast corner of State Lease No. 5003, as amended, having Coordinates of X = 2,711,850.00 and Y = 176,920.00; thence along the boundary of said State Lease No. 5003 the following courses and distances: West 1,800.00 feet, South 3,771.56 feet and East 280.01 feet to a point on the West line of State Lease No. 4901, as amended, having Coordinates of X = 2,710,330.01 and Y = 173,148.44; thence along the boundary of said State Lease No. 4901, the following courses and distances: South 37 degrees 58 minutes 26 seconds West 48.79 feet, South 30 degrees 57 minutes 50 seconds West 174.93 feet, South 19 degrees 39 minutes 14 seconds West 148.66 feet, South 10 degrees 00 minutes 29 seconds West 172.63 feet, South 185.00 feet, South 09 degrees 51 minutes 57 seconds East 116.73 feet, South 20 degrees 13 minutes 30 seconds East 202.49 feet, South 33 degrees 41 minutes 24 seconds East 180.28 feet, South 45 degrees 00 minutes 00 seconds East 197.99 feet, South 52 degrees 07 minutes 30 seconds East 342.05 feet, South 61 degrees 23 minutes 22 seconds East 250.60 feet, South 67 degrees 45 minutes 04 seconds East 237.70 feet, South 74 degrees 03 minutes 17 seconds East 291.20 feet, and South 81 degrees 28 minutes 09 seconds East 105.60 feet, to a point having Coordinates of X = 2,711,554.43 and Y = 171,354.31; thence West 6,838.74 feet to a point having Coordinates of X = 2,704,715.69 and Y = 171,354.31; thence North 8,300.00 feet to the point of beginning, **LESS AND EXCEPT** any portion of said State Lease No. 2091, as amended that may lie within the above described tract, and **LESS AND EXCEPT** all privately owned land that lies within the above described tract, containing approximately 1,229 gross acres and containing approximately **1,163 net acres**, **LESS AND EXCEPT** any privately owned land that may be located within the above described Tract, if any, comprising approximately 66 acres, leaving a total of 1,163 net acres of State owned land and water bottoms within the above described Tract, all as more particularly outlined on a plat on file in the Office of Mineral Resources, Department of Natural Resources. All bearings, distances and coordinates are based on Louisiana Coordinate System of 1927, (South Zone).

NOTE: The above description of the Tract nominated for lease has been provided and corrected, where required, exclusively by the nomination party. Any mineral lease selected from this Tract and awarded by the Louisiana State Mineral Board shall be without warranty of any kind, either express, implied, or statutory, including, but not limited to, the

implied warranties of merchantability and fitness for a particular purpose. Should the mineral lease awarded by the Louisiana State Mineral Board be subsequently modified, cancelled or abrogated due to the existence of conflicting leases, operating agreements, private claims or other future obligations or conditions which may affect all or any portion of the leased Tract, it shall not relieve the Lessee of the obligation to pay any bonus due thereon to the Louisiana State Mineral Board, nor shall the Louisiana State Mineral Board be obligated to refund any consideration paid by the Lessor prior to such modification, cancellation, or abrogation, including, but not limited to, bonuses, rentals and royalties.

NOTE: The Office of Mineral Resources will require a minimum bonus of \$350 per acre and a minimum royalty of 25%.

NOTE: The mineral lease is located within the Pass A Loutre WMA under the jurisdiction of the Louisiana Department of Wildlife and Fisheries which has promulgated rules and regulations for the protection of game and wildlife on the aforesaid Tract and, therefore, shall be subject to said rules and regulations, a copy of which shall be attached to the mineral lease. In addition to the specific rules and regulations applicable, the following shall apply regarding operations under this mineral lease:

1. No activities will be allowed without written authorization from the Louisiana Department of Wildlife and Fisheries.
2. Projects will be evaluated on a case by case basis. Modifications to projects may be required including, but not limited to, access routes, spoil placement, well sites, flow lines and other appurtenant structures.
3. Mitigation will be required to offset avoidable wetland impacts.
4. Removal of all structures, facilities and equipment will be required within 120 days of abandonment unless otherwise agreed to by the Louisiana Department of Wildlife and Fisheries.
5. No activities will be allowed during the hunting season unless approved by the Department.
6. Compliance with the said WMA regulations will be required unless otherwise specified by the Department.
7. Prior to submitting applications for wetland permits to Federal and State permitting agencies the lease holder shall coordinate project details with the Louisiana Department of Wildlife and Fisheries, Fur and Refuge Division. Contact person for the Department will be Mike Windham at (504) 568-5886.

NOTE: The State of Louisiana does hereby reserve, and this lease shall be subject to, the imprescriptible right of surface use in the nature of a servitude in favor of the Department of Natural Resources, including its Offices and Commissions, for the sole purpose of implementing, constructing, servicing and maintaining approved coastal zone management and/or restoration projects. Utilization of any and all rights derived under this lease by the mineral lessee, its agents, successors or assigns, shall not interfere with nor hinder the reasonable surface use by the






Department of Natural Resources, its Offices or Commissions, as herein above reserved.

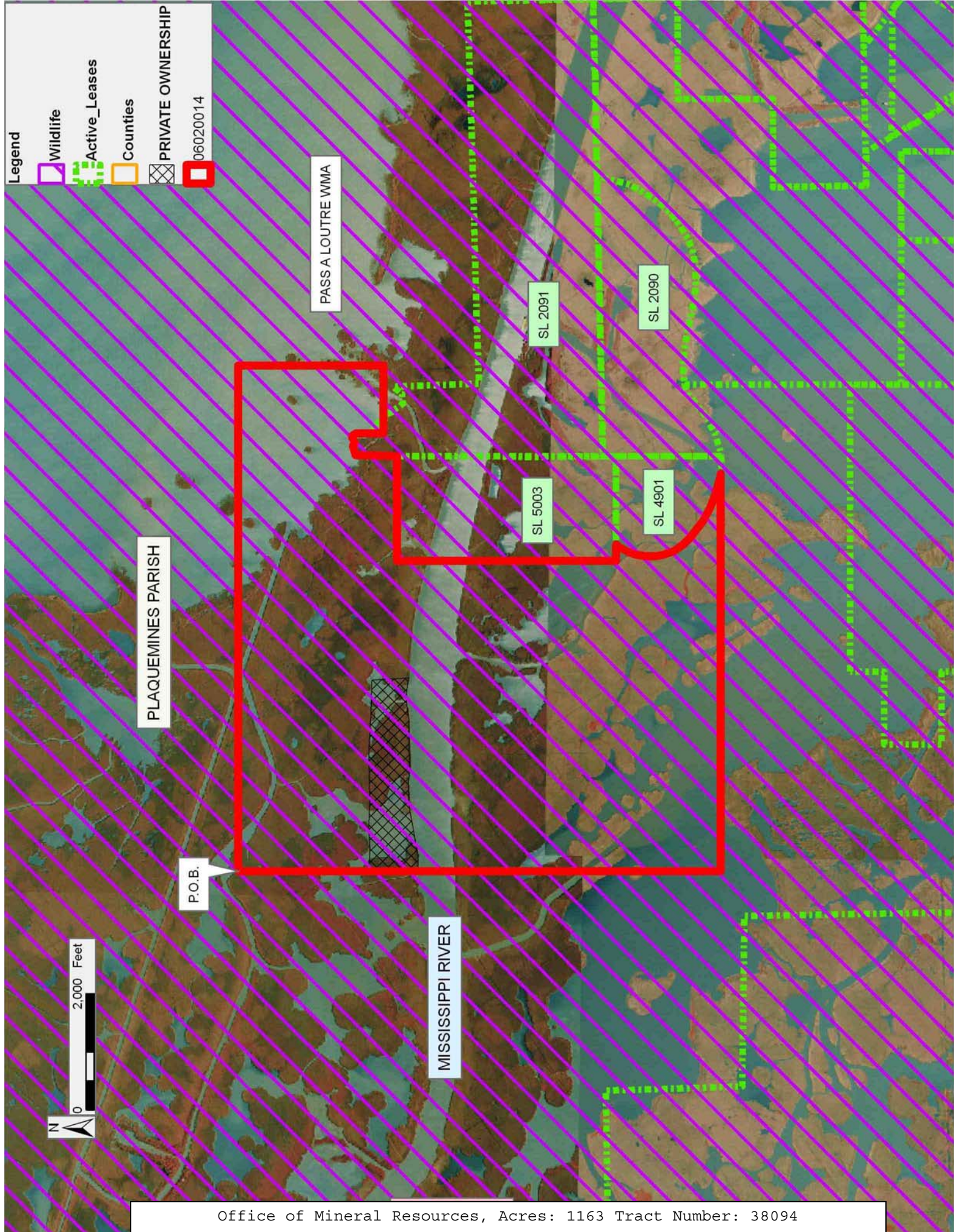
NOTE: The Department of Wildlife and Fisheries has designated certain areas in the coastal waters of the State of Louisiana as Oyster Seed Bed Areas. The exact location of those Seed Bed Areas must be obtained from the Department of Wildlife and Fisheries and any work done under a mineral lease from the State of Louisiana may necessarily be conducted in conformity with the rules and regulations promulgated by the said Department of Wildlife and Fisheries for Oyster Seed Bed Areas.

Applicant: THEOPHILUS OIL GAS & LAND SERVICES LLC

Bidder	Cash Payment	Price/Acre	Rental	Oil	Gas	Other

Legend

-  Wildlife
-  Active_Leases
-  Counties
-  PRIVATE OWNERSHIP
-  06020014



PLAQUEMINES PARISH

PASS A LOUTRE WMA

SL 2091

SL 2090

SL 5003

SL 4901

P.O.B.

MISSISSIPPI RIVER

2,000 Feet

N

TRACT 38095 - Plaquemines Parish, Louisiana

All State owned lands and water bottoms located within the boundaries of the Pass-A-Loutre Wildlife Management Area as defined by the Department of Wildlife and Fisheries incorporating a title opinion from the Office of the Governor dated August 3, 1998, not presently under mineral lease by the State of Louisiana on February 8, 2006, all as set forth following: Beginning at a point having Coordinates of X = 2,700,015.69 and Y = 179,654.31; thence East 4,700.00 feet to a point having Coordinates of X = 2,704,715.69 and Y = 179,654.31; thence South 8,846.32 feet to a point having Coordinates of X = 2,704,715.69 and Y = 170,808.00; thence West approximately 772 feet to a point on the Eastern boundary of State Lease No. 214, as amended and State Lease No. 1393; thence along the boundary of said State Lease No. 214 and said State Lease No. 1393 the following courses: Westerly, Northerly, and Westerly to the intersection of a line having a Coordinate of X = 2,700,015.69; thence North approximately 6,446 feet to the point of beginning, **LESS AND EXCEPT** any portion of said State Lease No. 214, as amended and said State Lease No. 1393 that may lie within the above described tract, containing approximately 903 gross acres and containing approximately **726 net acres, LESS AND EXCEPT** any privately owned land that may be located within the above described Tract, if any, comprising approximately 177 acres, leaving a total of 726 net acres of State owned land and water bottoms within the above described Tract, all as more particularly outlined on a plat on file in the Office of Mineral Resources, Department of Natural Resources. All bearings, distances and coordinates are based on Louisiana Coordinate System of 1927, (South Zone).

NOTE: The above description of the Tract nominated for lease has been provided and corrected, where required, exclusively by the nomination party. Any mineral lease selected from this Tract and awarded by the Louisiana State Mineral Board shall be without warranty of any kind, either express, implied, or statutory, including, but not limited to, the implied warranties of merchantability and fitness for a particular purpose. Should the mineral lease awarded by the Louisiana State Mineral Board be subsequently modified, cancelled or abrogated due to the existence of conflicting leases, operating agreements, private claims or other future obligations or conditions which may affect all or any portion of the leased Tract, it shall not relieve the Lessee of the obligation to pay any bonus due thereon to the Louisiana State Mineral Board, nor shall the Louisiana State Mineral Board be obligated to refund any consideration paid by the Lessor prior to such modification, cancellation, or abrogation, including, but not limited to, bonuses, rentals and royalties.

NOTE: The Office of Mineral Resources will require a minimum bonus of \$350 per acre and a minimum royalty of 25%.

NOTE: The mineral lease is located within the Pass A Loutre WMA under the jurisdiction of the Louisiana Department of Wildlife and Fisheries which has promulgated rules and regulations for the protection of game and

wildlife on the aforesaid Tract and, therefore, shall be subject to said rules and regulations, a copy of which shall be attached to the mineral lease. In addition to the specific rules and regulations applicable, the following shall apply regarding operations under this mineral lease:

1. No activities will be allowed without written authorization from the Louisiana Department of Wildlife and Fisheries.
2. Projects will be evaluated on a case by case basis. Modifications to projects may be required including, but not limited to, access routes, spoil placement, well sites, flow lines and other appurtenant structures.
3. Mitigation will be required to offset avoidable wetland impacts.
4. Removal of all structures, facilities and equipment will be required within 120 days of abandonment unless otherwise agreed to by the Louisiana Department of Wildlife and Fisheries.
5. No activities will be allowed during the hunting season unless approved by the Department.
6. Compliance with the said WMA regulations will be required unless otherwise specified by the Department.
7. Prior to submitting applications for wetland permits to Federal and State permitting agencies the lease holder shall coordinate project details with the Louisiana Department of Wildlife and Fisheries, Fur and Refuge Division. Contact person for the Department will be Mike Windham at (504) 568-5886.

NOTE: The State of Louisiana does hereby reserve, and this lease shall be subject to, the imprescriptible right of surface use in the nature of a servitude in favor of the Department of Natural Resources, including its Offices and Commissions, for the sole purpose of implementing, constructing, servicing and maintaining approved coastal zone management and/or restoration projects. Utilization of any and all rights derived under this lease by the mineral lessee, its agents, successors or assigns, shall not interfere with nor hinder the reasonable surface use by the Department of Natural Resources, its Offices or Commissions, as herein above reserved.

NOTE: The Department of Wildlife and Fisheries has designated certain areas in the coastal waters of the State of Louisiana as Oyster Seed Bed Areas. The exact location of those Seed Bed Areas must be obtained from the Department of Wildlife and Fisheries and any work done under a mineral lease from the State of Louisiana may necessarily be conducted in conformity with the rules and regulations promulgated by the said Department of Wildlife and Fisheries for Oyster Seed Bed Areas.

Applicant: THEOPHILUS OIL GAS & LAND SERVICES LLC

Bidder	Cash Payment	Price/Acre	Rental	Oil	Gas	Other

Legend

06020013

Wildlife

Active_Leases

Countries

PRIVATE OWNERSHIP



PASSA LOUTRE WMA

MISSISSIPPI RIVER

P.O.B.

PLAQUEMINES PARISH

SL 1393

TRACT 38096 - Plaquemines Parish, Louisiana

All State owned lands and water bottoms located within the boundaries of the Pass-A-Loutre Wildlife Management Area as defined by the Department of Wildlife and Fisheries incorporating a title opinion from the Office of the Governor dated August 3, 1998, not presently under mineral lease by the State of Louisiana on February 8, 2006, all as set forth following: Beginning at a point having Coordinates of X = 2,704,715.69 and Y = 171,354.31; thence East 6,838.74 feet to a point on the Southern boundary of State Lease No. 4901, as amended, having Coordinates of X = 2,711,554.43 and Y = 171,354.31; thence along the Southern boundary of said State Lease No. 4901 the following courses: South 81 degrees 28 minutes 10 seconds East 96.63 feet and East 200.01 feet to the Southernmost point of said State Lease No. 4901, also being the Southernmost point of State Lease No. 2090, as amended, having Coordinates of X = 2,711,850.00 and Y = 171,339.98; thence Northeasterly along the Southern boundary of said State Lease No. 2090 the following courses: North 78 degrees 40 minutes 58 seconds East 152.97 feet, North 71 degrees 33 minutes 54 seconds East 252.98 feet, North 63 degrees 26 minutes 06 seconds East 245.97 feet, North 56 degrees 18 minutes 36 seconds East 216.33 feet, North 50 degrees 49 minutes 35 seconds East 348.28 feet, North 63 degrees 26 minutes 06 seconds East 89.44 feet and North 71 degrees 33 minutes 54 seconds East 104.07 feet to the Northwest corner of State Lease No. 17071 having Coordinates of X = 2,713,088.72 and Y = 171,972.90; thence South 2,844.91 feet along the West boundary of said State Lease No. 17071 to the Northeast Corner of State Lease No. 17566 having Coordinates of X = 2,713,088.72 and Y = 169,128.00; thence along the boundary of said State Lease No. 17566 the following courses: West 4,944.72 feet, South 590.00 feet, West 1,250.00 feet, South 989.56 feet, East 1,250.02 feet, and South 940.44 feet to its Southwest corner having Coordinates of X = 2,708,144.02 and Y = 166,608.00; thence West approximately 4,200 feet to a point on the East boundary of State Lease No. 214, as amended and State Lease No. 1393; thence Northerly along said East boundary of said State Lease Nos. 214 and 1393 to their Northeast corner; thence Easterly approximately 772 feet to a point having Coordinates of X = 2,704,715.69 and Y = 170,808.00; thence North 546.32 feet to the point of beginning, **LESS AND EXCEPT** any portion of said State Lease No. 214, as amended and said State Lease No. 1393 that may lie within the above described tract, containing approximately **679 acres, LESS AND EXCEPT** any privately owned land that may be located within the above described Tract, if any, comprising approximately 0 acres, leaving a total of 679 net acres of State owned land and water bottoms within the above described Tract, all as more particularly outlined on a plat on file in the Office of Mineral Resources, Department of Natural Resources. All bearings, distances and coordinates are based on Louisiana Coordinate System of 1927, (South Zone).

NOTE: The above description of the Tract nominated for lease has been provided and corrected, where required, exclusively by the nomination party. Any mineral lease selected from this Tract and awarded by the

Louisiana State Mineral Board shall be without warranty of any kind, either express, implied, or statutory, including, but not limited to, the implied warranties of merchantability and fitness for a particular purpose. Should the mineral lease awarded by the Louisiana State Mineral Board be subsequently modified, cancelled or abrogated due to the existence of conflicting leases, operating agreements, private claims or other future obligations or conditions which may affect all or any portion of the leased Tract, it shall not relieve the Lessee of the obligation to pay any bonus due thereon to the Louisiana State Mineral Board, nor shall the Louisiana State Mineral Board be obligated to refund any consideration paid by the Lessor prior to such modification, cancellation, or abrogation, including, but not limited to, bonuses, rentals and royalties.

NOTE: The Office of Mineral Resources will require a minimum bonus of \$350 per acre and a minimum royalty of 25%.

NOTE: The mineral lease is located within the Pass A Loutre WMA under the jurisdiction of the Louisiana Department of Wildlife and Fisheries which has promulgated rules and regulations for the protection of game and wildlife on the aforesaid Tract and, therefore, shall be subject to said rules and regulations, a copy of which shall be attached to the mineral lease. In addition to the specific rules and regulations applicable, the following shall apply regarding operations under this mineral lease:

1. No activities will be allowed without written authorization from the Louisiana Department of Wildlife and Fisheries.
2. Projects will be evaluated on a case by case basis. Modifications to projects may be required including, but not limited to, access routes, spoil placement, well sites, flow lines and other appurtenant structures.
3. Mitigation will be required to offset avoidable wetland impacts.
4. Removal of all structures, facilities and equipment will be required within 120 days of abandonment unless otherwise agreed to by the Louisiana Department of Wildlife and Fisheries.
5. No activities will be allowed during the hunting season unless approved by the Department.
6. Compliance with the said WMA regulations will be required unless otherwise specified by the Department.
7. Prior to submitting applications for wetland permits to Federal and State permitting agencies the lease holder shall coordinate project details with the Louisiana Department of Wildlife and Fisheries, Fur and Refuge Division. Contact person for the Department will be Mike Windham at (504) 568-5886.

NOTE: The State of Louisiana does hereby reserve, and this lease shall be subject to, the imprescriptible right of surface use in the nature of a servitude in favor of the Department of Natural Resources, including its Offices and Commissions, for the sole purpose of implementing, constructing, servicing and maintaining approved coastal zone management and/or restoration projects. Utilization of any and all rights derived under this lease by the mineral lessee, its agents, successors or assigns,

shall not interfere with nor hinder the reasonable surface use by the Department of Natural Resources, its Offices or Commissions, as herein above reserved.

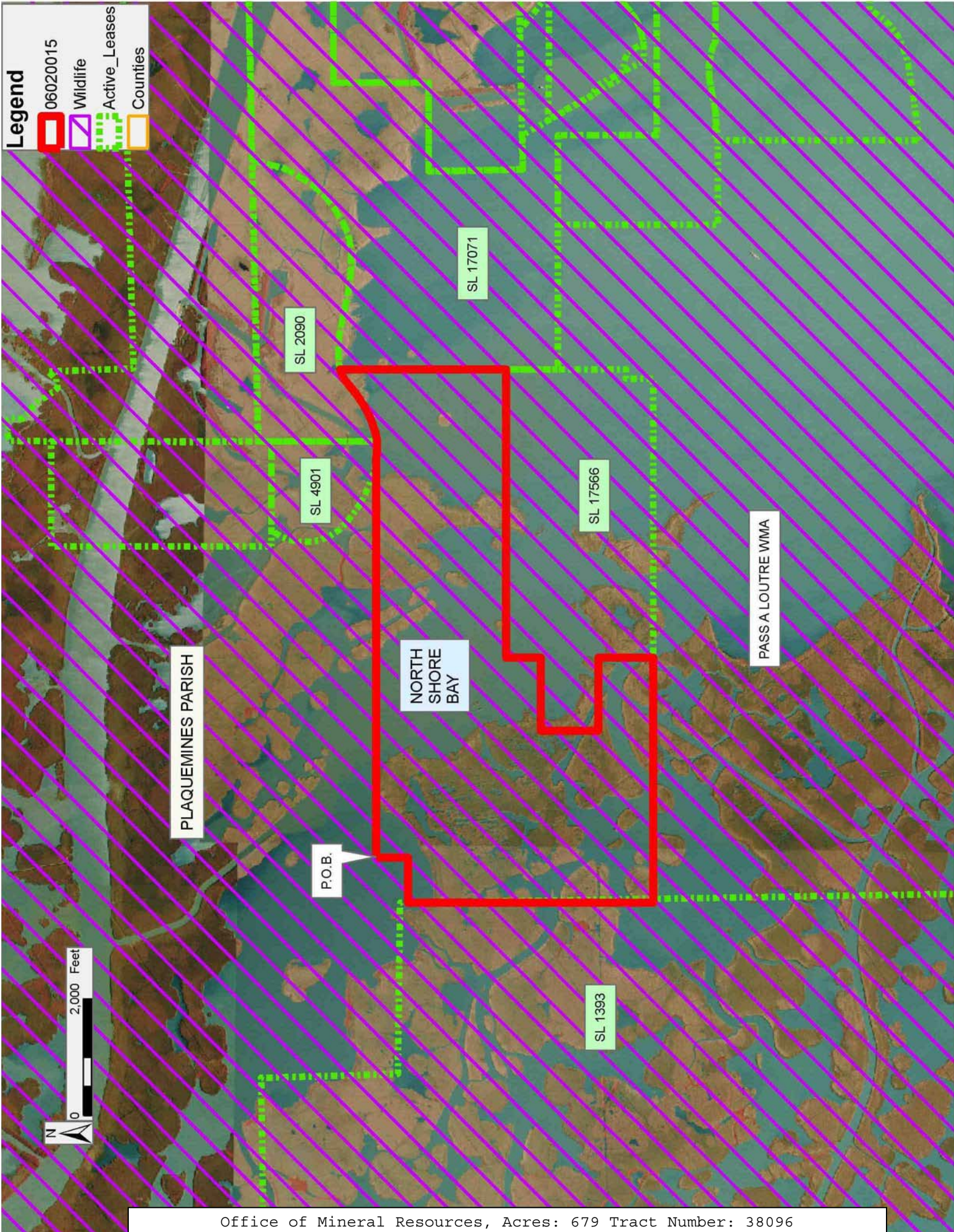
NOTE: The Department of Wildlife and Fisheries has designated certain areas in the coastal waters of the State of Louisiana as Oyster Seed Bed Areas. The exact location of those Seed Bed Areas must be obtained from the Department of Wildlife and Fisheries and any work done under a mineral lease from the State of Louisiana may necessarily be conducted in conformity with the rules and regulations promulgated by the said Department of Wildlife and Fisheries for Oyster Seed Bed Areas.

Applicant: THEOPHILUS OIL GAS & LAND SERVICES LLC

Bidder	Cash Payment	Price/Acre	Rental	Oil	Gas	Other

Legend

- 06020015
- Wildlife
- Active_Leases
- Counties



PLAQUEMINES PARISH

NORTH SHORE BAY

PASS A LOUTRE WMA

SL 2090

SL 4901

SL 17071

SL 17566

SL 1393

P.O.B.

