

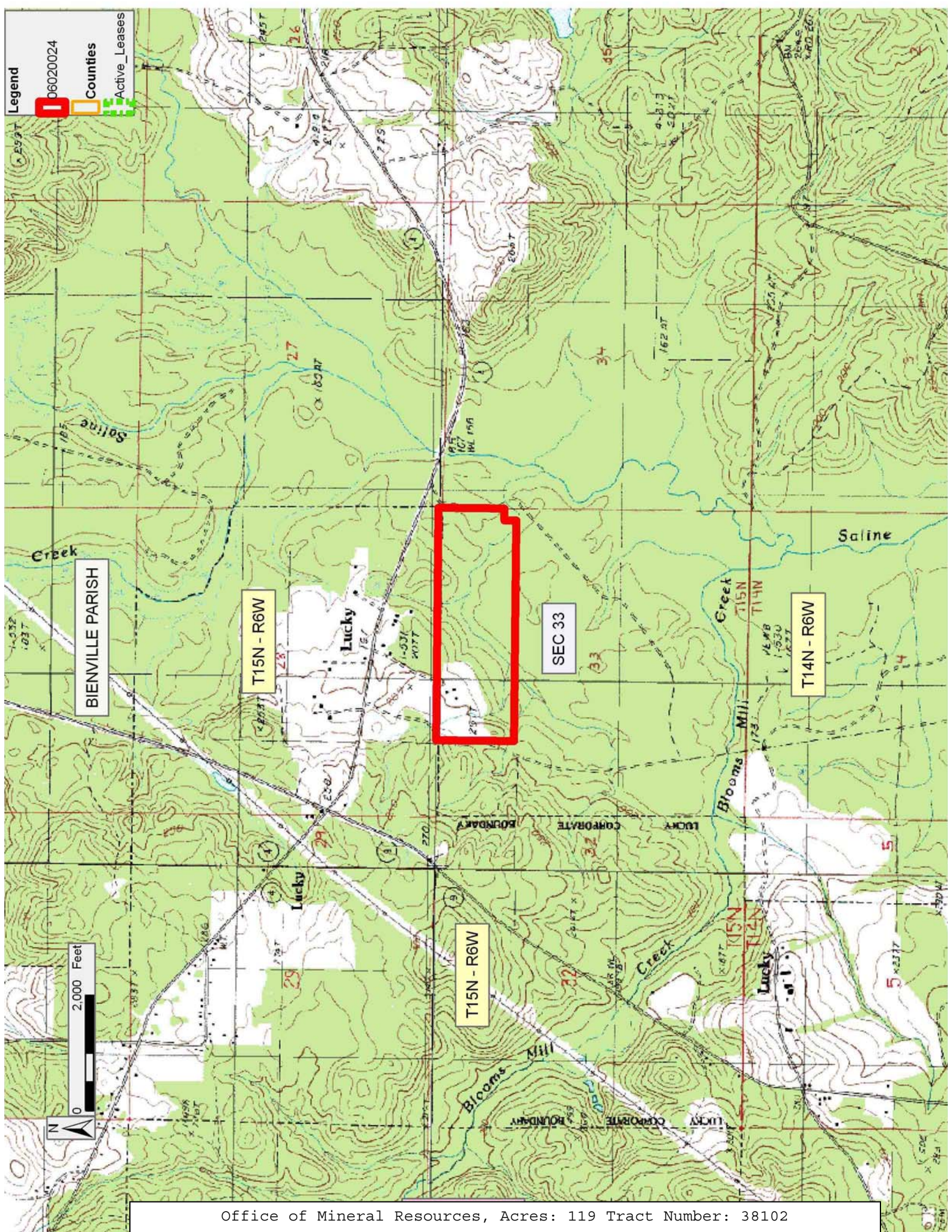
TRACT 38102 - Bienville Parish, Louisiana

All of the mineral rights only under land adjudicated to and acquired by the State of Louisiana in and through a proper tax sale, and subsequently alienated by the State which retained the mineral rights thereto, and which is not under valid mineral lease from the State of Louisiana on February 8, 2006, situated in Bienville Parish, Louisiana, and being more fully described as follows: That certain tract of land being the North Half of the Northeast Quarter (N/2 of NE/4), and the Northeast Quarter of the Northwest Quarter (NE/4 of NW/4), less 1 acre in the Southeast corner of the above described tract, said tract being situated in Section 33, Township 15 North, Range 6 West, Bienville Parish, Louisiana, containing approximately **119 acres**, all as more particularly outlined on a plat on file in the Office of Mineral Resources, Department of Natural Resources. All bearings, distances and coordinates are based on Louisiana Coordinate System of 1927, (North or South Zone), where applicable.

NOTE: The above description of the Tract nominated for lease has been provided and corrected, where required, exclusively by the nomination party. Any mineral lease selected from this Tract and awarded by the Louisiana State Mineral Board shall be without warranty of any kind, either express, implied, or statutory, including, but not limited to, the implied warranties of merchantability and fitness for a particular purpose. Should the mineral lease awarded by the Louisiana State Mineral Board be subsequently modified, cancelled or abrogated due to the existence of conflicting leases, operating agreements, private claims or other future obligations or conditions which may affect all or any portion of the leased Tract, it shall not relieve the Lessee of the obligation to pay any bonus due thereon to the Louisiana State Mineral Board, nor shall the Louisiana State Mineral Board be obligated to refund any consideration paid by the Lessor prior to such modification, cancellation, or abrogation, including, but not limited to, bonuses, rentals and royalties.

Applicant: MADISON EXPLORATION COMPANY

Bidder	Cash Payment	Price/Acre	Rental	Oil	Gas	Other



Legend
06020024
Counties
Active_Leases

BIENVILLE PARISH

T15N - R6W

SEC 33

T14N - R6W

T15N - R6W

0 2,000 Feet

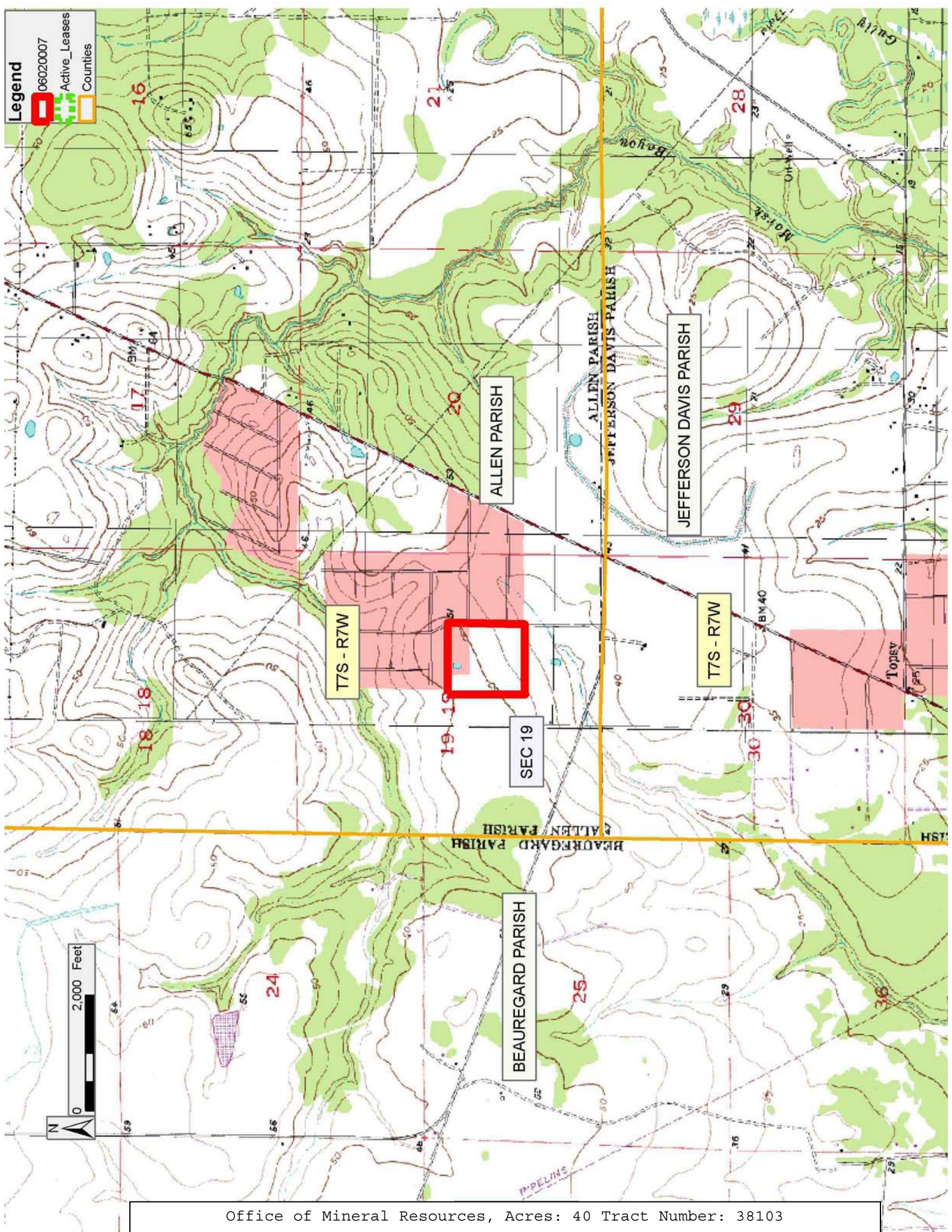
TRACT 38103 - Allen Parish, Louisiana

All of the mineral rights only under land adjudicated to and acquired by the State of Louisiana in and through a proper tax sale, and subsequently alienated by the State which retained the mineral rights thereto, and which is not under valid mineral lease from the State of Louisiana on February 8, 2006, situated in Allen Parish, Louisiana, and being more fully described as follows: The Northwest Quarter of the Southeast Quarter (NW/4 of SE/4) of Section 19, Township 7 South, Range 7 West situated in Allen Parish, Louisiana, being the same land adjudicated to the State of Louisiana in the name of John H. Poe for unpaid taxes of the year 1922, and subsequently sold by the State of Louisiana on December 22, 1960 under Patent No. 19121, recorded in Vol. 49, Page 195, containing approximately **40 acres**, all as more particularly outlined on a plat on file in the Office of Mineral Resources, Department of Natural Resources. All bearings, distances and coordinates are based on Louisiana Coordinate System of 1927, (North or South Zone), where applicable.

NOTE: The above description of the Tract nominated for lease has been provided and corrected, where required, exclusively by the nomination party. Any mineral lease selected from this Tract and awarded by the Louisiana State Mineral Board shall be without warranty of any kind, either express, implied, or statutory, including, but not limited to, the implied warranties of merchantability and fitness for a particular purpose. Should the mineral lease awarded by the Louisiana State Mineral Board be subsequently modified, cancelled or abrogated due to the existence of conflicting leases, operating agreements, private claims or other future obligations or conditions which may affect all or any portion of the leased Tract, it shall not relieve the Lessee of the obligation to pay any bonus due thereon to the Louisiana State Mineral Board, nor shall the Louisiana State Mineral Board be obligated to refund any consideration paid by the Lessor prior to such modification, cancellation, or abrogation, including, but not limited to, bonuses, rentals and royalties.

Applicant: PETRO-LAND RESOURCES, INC.

Bidder	Cash Payment	Price/Acre	Rental	Oil	Gas	Other



Legend

- 06020007
- Active_Leases
- Counties

0 2,000 Feet