

TRACT 38074 - Ouachita Parish, Louisiana

All of the lands now or formerly constituting the beds and bottoms of all water bodies of every nature and description the title of which vests in the State of Louisiana, together with all islands arising therein and other lands formed by accretion or by reliction, where allowed by law, excepting tax adjudicated lands, and not presently under mineral lease on February 8, 2006, situated in Ouachita Parish, Louisiana, and more particularly described as follows: Beginning at a point having Coordinates of X = 2,104,332.00 and Y = 649,541.00; thence North 15,928.00 feet to a point having Coordinates of X = 2,104,332.00 and Y = 665,469.00; thence East 18,480.00 feet to a point having Coordinates of X = 2,122,812.00 and Y = 665,469.00; thence South 15,928.00 feet to a point having Coordinates of X = 2,122,812.00 and Y = 649,541.00; thence West 18,480.00 feet to the point of beginning, **LESS AND EXCEPT** those portions of State Lease No. 17876 and State Lease No. 18802 that lie within the above described tract, more particularly described as follows: Beginning at the Southwest corner of State Lease No. 17876 having Coordinates of X = 2,110,276.93 and Y = 657,704.07; thence along the boundary of said State Lease No. 17876 the following courses: North 2,395.98 feet and East 1,673.07 feet to the Southwest corner of State Lease No. 18802 having Coordinates of X = 2,111,950.00 and Y = 660,100.05; thence along the boundary of said State Lease No. 18802 the following courses: North 3,399.95 feet, East 3,800.00 feet, and South 00 degrees 00 minutes 01 seconds West 3,399.95 feet to its Southeast corner and the Northeast corner of said State Lease No. 17876 having Coordinates of X = 2,115,749.98 and Y = 660,100.05; thence along the boundary of said State Lease No. 17876 the following courses: South 2,395.98 feet and West 5,473.05 feet to the point of beginning, containing approximately **293 acres**, all as more particularly outlined on a plat on file in the Office of Mineral Resources, Department of Natural Resources. All bearings, distances and coordinates are based on Louisiana Coordinate System of 1927, (North or South Zone), where applicable.

NOTE: The above description of the Tract nominated for lease has been provided and corrected, where required, exclusively by the nomination party. Any mineral lease selected from this Tract and awarded by the Louisiana State Mineral Board shall be without warranty of any kind, either express, implied, or statutory, including, but not limited to, the implied warranties of merchantability and fitness for a particular purpose. Should the mineral lease awarded by the Louisiana State Mineral Board be subsequently modified, cancelled or abrogated due to the existence of conflicting leases, operating agreements, private claims or other future obligations or conditions which may affect all or any portion of the leased Tract, it shall not relieve the Lessee of the obligation to pay any bonus due thereon to the Louisiana State Mineral Board, nor shall the Louisiana State Mineral Board be obligated to refund any consideration paid by the Lessor prior to such modification, cancellation, or abrogation, including, but not limited to, bonuses, rentals and royalties.

Applicant: HUNTER ENERGY CORPORATION

Bidder	Cash Payment	Price/Acre	Rental	Oil	Gas	Other



Legend

06020008

Active_Leases

Counties

06020008_11_30_05

OUACHITA RIVER

OUACHITA PARISH

T17N - R4E

SL 18802

SL 17876

T17N - R3E

P.O.B.

0 4,000 Feet

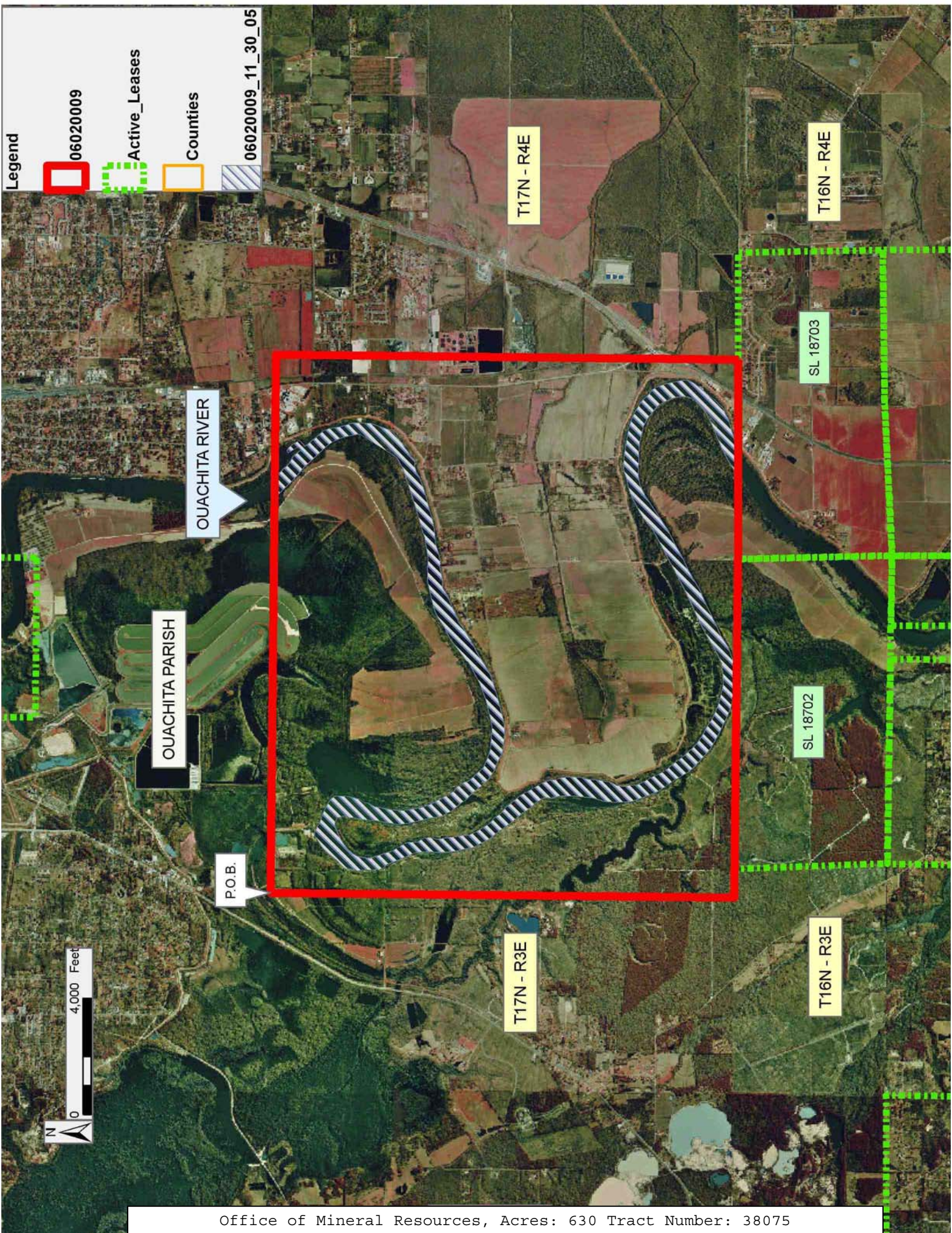
TRACT 38075 - Ouachita Parish, Louisiana

All of the lands now or formerly constituting the beds and bottoms of all water bodies of every nature and description the title of which vests in the State of Louisiana, together with all islands arising therein and other lands formed by accretion or by reliction, where allowed by law, excepting tax adjudicated lands, and not presently under mineral lease on February 8, 2006, situated in Ouachita Parish, Louisiana, and more particularly described as follows: Beginning at a point having Coordinates of X = 2,104,332.00 and Y = 649,541.00; thence East 18,480.00 feet to a point having Coordinates of X = 2,122,812.00 and Y = 649,541.00; thence South 15,873.91 feet to a point on the North line of State Lease No. 18703 having Coordinates of X = 2,122,812.00 and Y = 633,667.09; thence along the boundary of said State Lease No. 18703 the following courses: South 89 degrees 31 minutes 10 seconds West 1,561.05 feet and South 89 degrees 28 minutes 08 seconds West 5,286.23 feet to its Northwest corner and the Northeast corner of State Lease No. 18702 having Coordinates of X = 2,115,965.00 and Y = 633,605.00; thence North 89 degrees 57 minutes 25 seconds West 10,666.00 feet on the North line of said State Lease No. 18702 to its Northwest corner having Coordinates of X = 2,105,299.00 and Y = 633,613.00; thence West 967.00 feet to a point having Coordinates of X = 2,104,332.00 and Y = 633,613.00; thence North 15,928.00 feet to the point of beginning, containing approximately **630 acres**, all as more particularly outlined on a plat on file in the Office of Mineral Resources, Department of Natural Resources. All bearings, distances and coordinates are based on Louisiana Coordinate System of 1927, (North or South Zone), where applicable.

NOTE: The above description of the Tract nominated for lease has been provided and corrected, where required, exclusively by the nomination party. Any mineral lease selected from this Tract and awarded by the Louisiana State Mineral Board shall be without warranty of any kind, either express, implied, or statutory, including, but not limited to, the implied warranties of merchantability and fitness for a particular purpose. Should the mineral lease awarded by the Louisiana State Mineral Board be subsequently modified, cancelled or abrogated due to the existence of conflicting leases, operating agreements, private claims or other future obligations or conditions which may affect all or any portion of the leased Tract, it shall not relieve the Lessee of the obligation to pay any bonus due thereon to the Louisiana State Mineral Board, nor shall the Louisiana State Mineral Board be obligated to refund any consideration paid by the Lessor prior to such modification, cancellation, or abrogation, including, but not limited to, bonuses, rentals and royalties.

Applicant: HUNTER ENERGY CORPORATION

Bidder	Cash Payment	Price/Acre	Rental	Oil	Gas	Other



TRACT 38076 - Cameron Parish, Louisiana

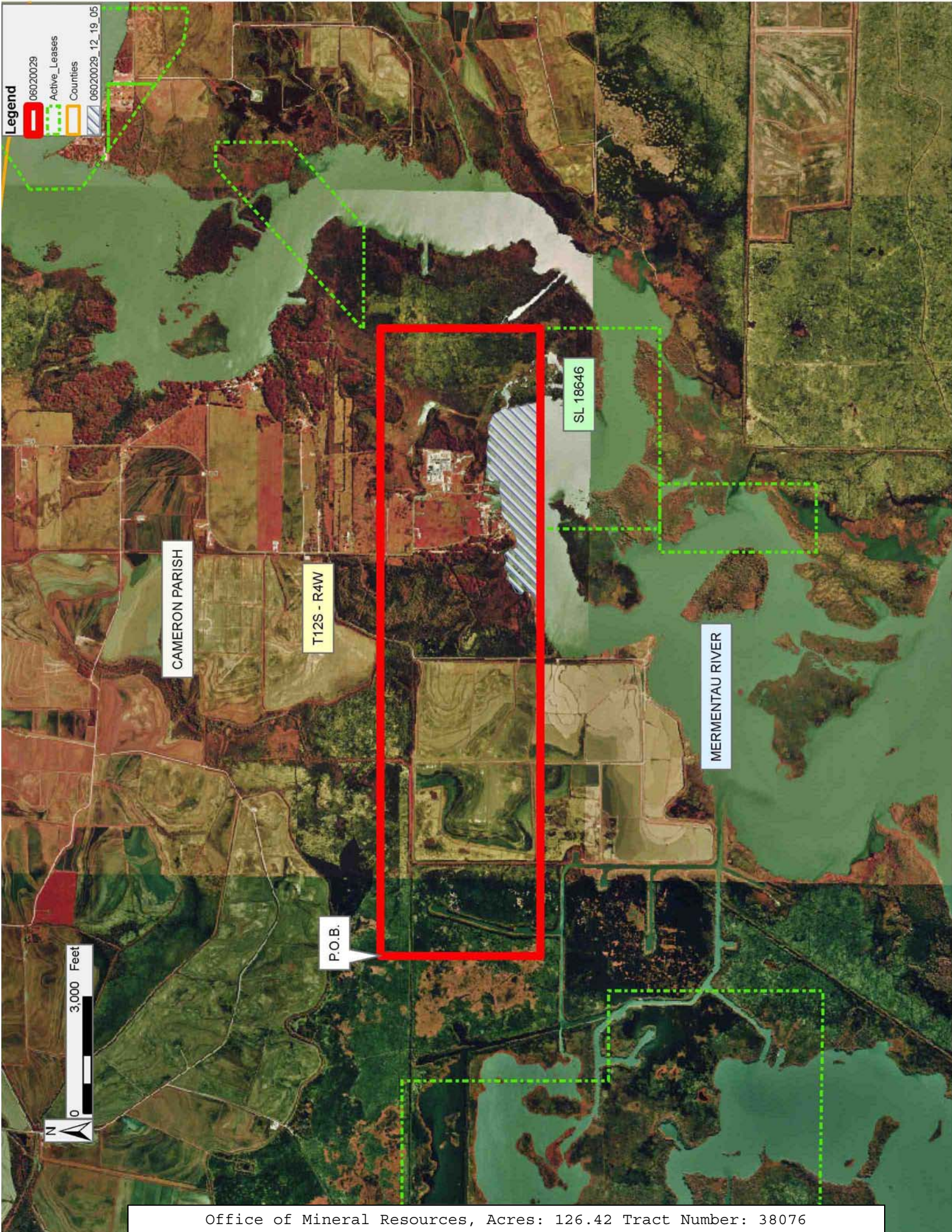
All of the lands now or formerly constituting the beds and bottoms of all water bodies of every nature and description the title of which vests in the State of Louisiana, together with all islands arising therein and other lands formed by accretion or by reliction, where allowed by law, excepting tax adjudicated lands, and not presently under mineral lease on February 8, 2006, situated in Cameron Parish, Louisiana, and more particularly described as follows: Beginning at a point having Coordinates of X = 1,530,893.75 and Y = 492,050.00; thence East 16,163.51 feet to a point having Coordinates of X = 1,547,057.26 and Y = 492,050.00; thence South 4,123.23 feet to the Northeast corner of State Lease No. 18646 having Coordinates of X = 1,547,057.26 and Y = 487,926.77; thence West 5,170.13 feet along the North boundary of said State Lease No. 18646 to its Northwest corner having Coordinates of X = 1,541,887.13 and Y = 487,926.77; thence West 10,993.38 feet to a point having Coordinates of X = 1,530,893.75 and Y = 487,926.77; thence North 4,123.23 feet to the point of beginning, **LESS AND EXCEPT** all those portions of State Lease No. 17314, as amended, that may lie within the above described tract, containing approximately **126.42 acres**, all as more particularly outlined on a plat on file in the Office of Mineral Resources, Department of Natural Resources. All bearings, distances and coordinates are based on Louisiana Coordinate System of 1927, (North or South Zone), where applicable.

NOTE: The above description of the Tract nominated for lease has been provided and corrected, where required, exclusively by the nomination party. Any mineral lease selected from this Tract and awarded by the Louisiana State Mineral Board shall be without warranty of any kind, either express, implied, or statutory, including, but not limited to, the implied warranties of merchantability and fitness for a particular purpose. Should the mineral lease awarded by the Louisiana State Mineral Board be subsequently modified, cancelled or abrogated due to the existence of conflicting leases, operating agreements, private claims or other future obligations or conditions which may affect all or any portion of the leased Tract, it shall not relieve the Lessee of the obligation to pay any bonus due thereon to the Louisiana State Mineral Board, nor shall the Louisiana State Mineral Board be obligated to refund any consideration paid by the Lessor prior to such modification, cancellation, or abrogation, including, but not limited to, bonuses, rentals and royalties.

NOTE: The State of Louisiana does hereby reserve, and this lease shall be subject to, the imprescriptible right of surface use in the nature of a servitude in favor of the Department of Natural Resources, including its Offices and Commissions, for the sole purpose of implementing, constructing, servicing and maintaining approved coastal zone management and/or restoration projects. Utilization of any and all rights derived under this lease by the mineral lessee, its agents, successors or assigns, shall not interfere with nor hinder the reasonable surface use by the Department of Natural Resources, its Offices or Commissions, as herein above reserved.

Applicant: LEE SONNIER III

Bidder	Cash Payment	Price/Acre	Rental	Oil	Gas	Other



TRACT 38077 - Cameron Parish, Louisiana

All of the lands now or formerly constituting the beds and bottoms of all water bodies of every nature and description the title of which vests in the State of Louisiana, together with all islands arising therein and other lands formed by accretion or by reliction, where allowed by law, excepting tax adjudicated lands, and not presently under mineral lease on February 8, 2006, situated in Cameron Parish, Louisiana, and more particularly described as follows: Beginning at a point having Coordinates of X = 1,547,057.26 and Y = 492,050.00; thence East 13,992.26 feet to a point having Coordinates of X = 1,561,049.52 and Y = 492,050.00; thence South 11,222.13 feet to point having Coordinates of X = 1,561,049.52 and Y = 480,827.87; thence West 18,000.00 feet to the Southeast corner of State Lease No. 18645 having Coordinates of X = 1,543,049.52 and Y = 480,827.87; thence North 4,030.40 feet along the East boundary of said State Lease No. 18645 its Northeast corner also being a point on the South boundary of State Lease No. 18646 having Coordinates of X = 1,543,049.52 and Y = 484,858.27; thence East 4,007.74 feet along the South boundary of said State Lease No. 18646 to its Southeast corner having Coordinates of X = 1,547,057.26 and Y = 484,858.27,; thence North 3,068.50 feet along the East boundary of said State Lease No. 18646 to its Northeast corner having Coordinates of X = 1,547,057.26 and Y = 487,926.77; thence North 4,123.23 feet to the point of beginning, **LESS AND EXCEPT** all those portions of State Lease No. 17314, as amended, that may lie within the above described tract, containing approximately **270 acres**, all as more particularly outlined on a plat on file in the Office of Mineral Resources, Department of Natural Resources. All bearings, distances and coordinates are based on Louisiana Coordinate System of 1927, (North or South Zone), where applicable.

NOTE: The above description of the Tract nominated for lease has been provided and corrected, where required, exclusively by the nomination party. Any mineral lease selected from this Tract and awarded by the Louisiana State Mineral Board shall be without warranty of any kind, either express, implied, or statutory, including, but not limited to, the implied warranties of merchantability and fitness for a particular purpose. Should the mineral lease awarded by the Louisiana State Mineral Board be subsequently modified, cancelled or abrogated due to the existence of conflicting leases, operating agreements, private claims or other future obligations or conditions which may affect all or any portion of the leased Tract, it shall not relieve the Lessee of the obligation to pay any bonus due thereon to the Louisiana State Mineral Board, nor shall the Louisiana State Mineral Board be obligated to refund any consideration paid by the Lessor prior to such modification, cancellation, or abrogation, including, but not limited to, bonuses, rentals and royalties.

NOTE: The State of Louisiana does hereby reserve, and this lease shall be subject to, the imprescriptible right of surface use in the nature of a servitude in favor of the Department of Natural Resources, including its Offices and Commissions, for the sole purpose of implementing,

constructing, servicing and maintaining approved coastal zone management and/or restoration projects. Utilization of any and all rights derived under this lease by the mineral lessee, its agents, successors or assigns, shall not interfere with nor hinder the reasonable surface use by the Department of Natural Resources, its Offices or Commissions, as herein above reserved.

Applicant: LEE SONNIER III

Bidder	Cash Payment	Price/Acre	Rental	Oil	Gas	Other

Legend

- 06020030
- Active_Leases
- Counties
- 06020030_12_19_05

CAMERON PARISH

T12S - R3W

T12S - R4W

SL 17314

P.O.B.

MERMENTAU RIVER

SL 18646

SL 18645



TRACT 38078 - Cameron Parish, Louisiana

All of the lands now or formerly constituting the beds and bottoms of all water bodies of every nature and description the title of which vests in the State of Louisiana, together with all islands arising therein and other lands formed by accretion or by reliction, where allowed by law, excepting tax adjudicated lands, and not presently under mineral lease on February 8, 2006, situated in Cameron Parish, Louisiana, and more particularly described as follows: Beginning at a point having Coordinates of X = 1,530,893.75 and Y = 487,926.77; thence East 10,993.38 feet to the Northwest corner of State Lease No. 18646 having Coordinates of X = 1,541,887.13 and Y = 487,926.77; thence South 3,068.50 feet along the West boundary of said State Lease No. 18646 to its Southwest corner also being a point on the North boundary of State Lease No. 18645 having Coordinates of X = 1,541,887.13 and Y = 484,858.27; thence West 600.94 feet along the North boundary of said State Lease No. 18645 to its Northwest corner having Coordinates of X = 1,541,286.19 and Y = 484,858.27; thence South 4,030.40 feet along the West boundary of said State Lease No. 18645 to its Southwest corner having Coordinates of X = 1,541,286.19 and Y = 480,827.87; thence East 1,763.33 feet along the South boundary of said State Lease No. 18645 to its Southeast corner having Coordinates of X = 1,543,049.52 and Y = 480,827.87; thence South 9,336.49 feet a point having Coordinates of X = 1,543,049.52 and Y = 471,491.38; thence West 12,155.77 feet a point having Coordinates of X = 1,530,893.75 and Y = 471,491.38; thence North 16,435.39 feet to the point of beginning, containing approximately **2,120.94 acres**, all as more particularly outlined on a plat on file in the Office of Mineral Resources, Department of Natural Resources. All bearings, distances and coordinates are based on Louisiana Coordinate System of 1927, (North or South Zone), where applicable.

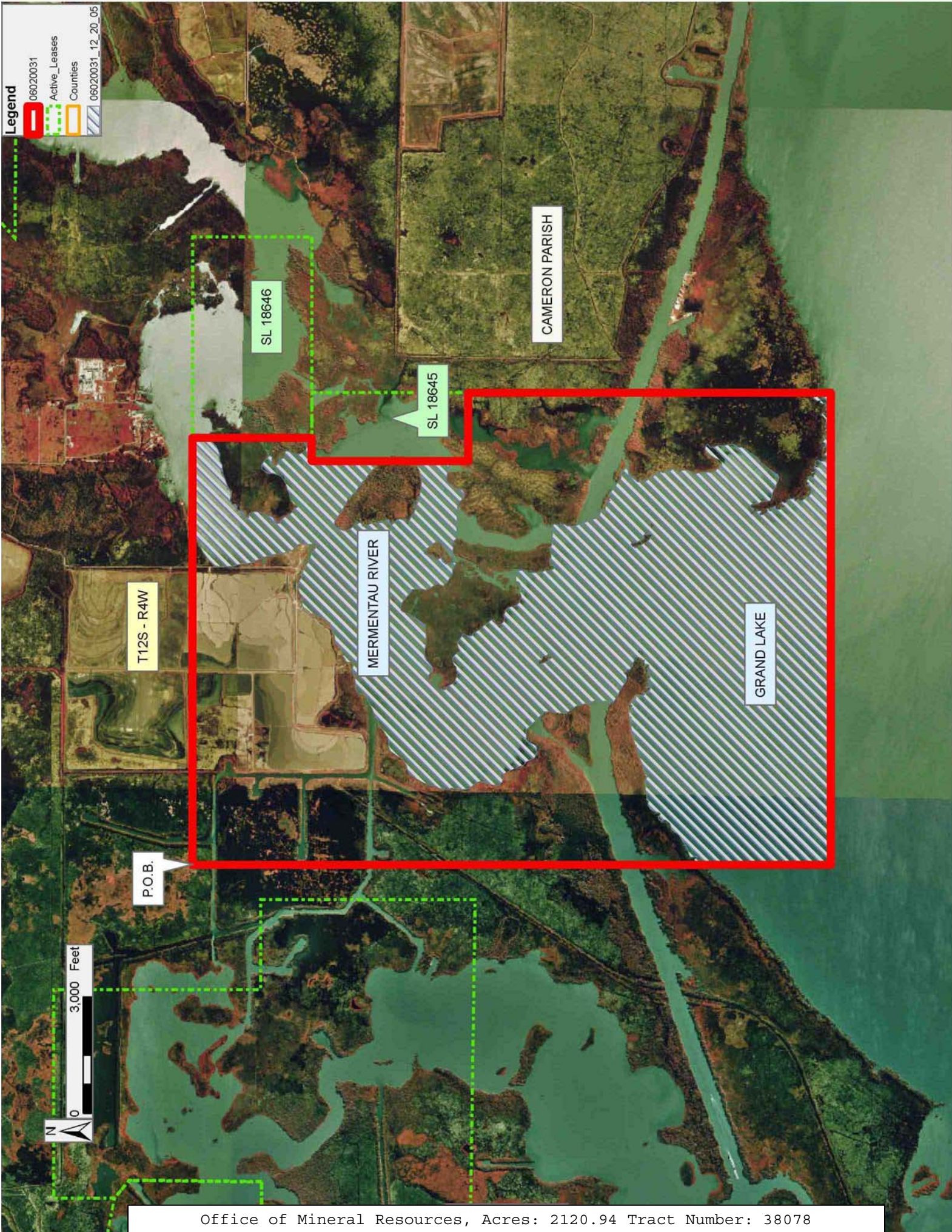
NOTE: The above description of the Tract nominated for lease has been provided and corrected, where required, exclusively by the nomination party. Any mineral lease selected from this Tract and awarded by the Louisiana State Mineral Board shall be without warranty of any kind, either express, implied, or statutory, including, but not limited to, the implied warranties of merchantability and fitness for a particular purpose. Should the mineral lease awarded by the Louisiana State Mineral Board be subsequently modified, cancelled or abrogated due to the existence of conflicting leases, operating agreements, private claims or other future obligations or conditions which may affect all or any portion of the leased Tract, it shall not relieve the Lessee of the obligation to pay any bonus due thereon to the Louisiana State Mineral Board, nor shall the Louisiana State Mineral Board be obligated to refund any consideration paid by the Lessor prior to such modification, cancellation, or abrogation, including, but not limited to, bonuses, rentals and royalties.

NOTE: The State of Louisiana does hereby reserve, and this lease shall be subject to, the imprescriptible right of surface use in the nature of a servitude in favor of the Department of Natural Resources, including its Offices and Commissions, for the sole purpose of implementing,

constructing, servicing and maintaining approved coastal zone management and/or restoration projects. Utilization of any and all rights derived under this lease by the mineral lessee, its agents, successors or assigns, shall not interfere with nor hinder the reasonable surface use by the Department of Natural Resources, its Offices or Commissions, as herein above reserved.

Applicant: LEE SONNIER III

Bidder	Cash Payment	Price/Acre	Rental	Oil	Gas	Other



Legend

- 06020031 (Red outline)
- Active_Leases (Green dashed line)
- Counties (Yellow outline)
- 06020031_12_20_05 (Blue hatched area)

CAMERON PARISH

SL 18646

SL 18645

MERMENTAU RIVER

GRAND LAKE

T12S - R4W

P.O.B.

3,000 Feet



TRACT 38079 - Vermilion Parish, Louisiana

All of the lands now or formerly constituting the beds and bottoms of all water bodies of every nature and description the title of which vests in the State of Louisiana, together with all islands arising therein and other lands formed by accretion or by reliction, where allowed by law, excepting tax adjudicated lands, and not presently under mineral lease on February 8, 2006, situated in Vermilion Parish, Louisiana, and more particularly described as follows: Beginning at a point having Coordinates of X = 1,767,500.00 and Y = 378,100.00; thence West 11,500.00 feet to a point having Coordinates of X = 1,756,000.00 and Y = 378,100.00; thence North 7,400.00 feet to a point having Coordinates of X = 1,756,000.00 and Y = 385,500.00; thence East 11,500.00 feet to a point having Coordinates of X = 1,767,500.00 and Y = 385,500.00; thence South 7,400.00 feet to the point of beginning, containing approximately **1,953.63 acres**, all as more particularly outlined on a plat on file in the Office of Mineral Resources, Department of Natural Resources. All bearings, distances and coordinates are based on Louisiana Coordinate System of 1927, (North or South Zone), where applicable.

NOTE: The above description of the Tract nominated for lease has been provided and corrected, where required, exclusively by the nomination party. Any mineral lease selected from this Tract and awarded by the Louisiana State Mineral Board shall be without warranty of any kind, either express, implied, or statutory, including, but not limited to, the implied warranties of merchantability and fitness for a particular purpose. Should the mineral lease awarded by the Louisiana State Mineral Board be subsequently modified, cancelled or abrogated due to the existence of conflicting leases, operating agreements, private claims or other future obligations or conditions which may affect all or any portion of the leased Tract, it shall not relieve the Lessee of the obligation to pay any bonus due thereon to the Louisiana State Mineral Board, nor shall the Louisiana State Mineral Board be obligated to refund any consideration paid by the Lessor prior to such modification, cancellation, or abrogation, including, but not limited to, bonuses, rentals and royalties.

NOTE: The State of Louisiana does hereby reserve, and this lease shall be subject to, the imprescriptible right of surface use in the nature of a servitude in favor of the Department of Natural Resources, including its Offices and Commissions, for the sole purpose of implementing, constructing, servicing and maintaining approved coastal zone management and/or restoration projects. Utilization of any and all rights derived under this lease by the mineral lessee, its agents, successors or assigns, shall not interfere with nor hinder the reasonable surface use by the Department of Natural Resources, its Offices or Commissions, as herein above reserved.

NOTE: The Department of Wildlife and Fisheries has designated certain areas in the coastal waters of the State of Louisiana as Oyster Seed Bed Areas. The exact location of those Seed Bed Areas must be obtained from

the Department of Wildlife and Fisheries and any work done under a mineral lease from the State of Louisiana may necessarily be conducted in conformity with the rules and regulations promulgated by the said Department of Wildlife and Fisheries for Oyster Seed Bed Areas.

Applicant: PATRICK L. DONOHUE PETROLEUM PROPERTIES, INC.

Bidder	Cash Payment	Price/Acre	Rental	Oil	Gas	Other

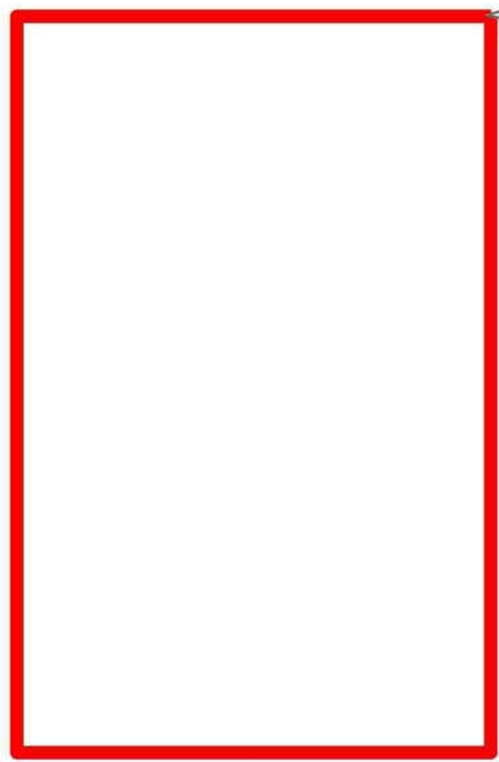
Legend

- 06020004
- Active_Leases
- Counties

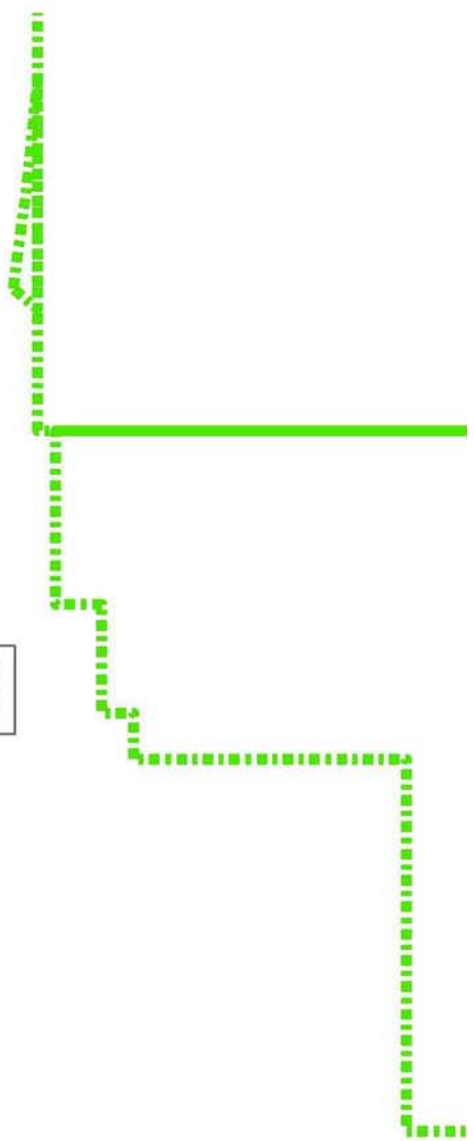


VERMILION BAY

VERMILION PARISH



P.O.B.



TRACT 38080 - Vermilion Parish, Louisiana

All of the lands now or formerly constituting the beds and bottoms of all water bodies of every nature and description the title of which vests in the State of Louisiana, together with all islands arising therein and other lands formed by accretion or by reliction, where allowed by law, excepting tax adjudicated lands, and not presently under mineral lease on February 8, 2006, situated in Vermilion Parish, Louisiana, and more particularly described as follows: Beginning at a point having Coordinates of X = 1,767,500.00 and Y = 378,100.00; thence North 7,400.00 feet to a point having Coordinates of X = 1,767,500.00 and Y = 385,500.00; thence East 14,700.00 feet to a point having Coordinates of X = 1,782,200.00 and Y = 385,500.00; thence South 7,400.00 feet to a point having Coordinates of X = 1,782,200.00 and Y = 378,100.00; thence West 14,700.00 feet to the point of beginning, containing approximately **2,497.25 acres**, all as more particularly outlined on a plat on file in the Office of Mineral Resources, Department of Natural Resources. All bearings, distances and coordinates are based on Louisiana Coordinate System of 1927, (North or South Zone), where applicable.

NOTE: The above description of the Tract nominated for lease has been provided and corrected, where required, exclusively by the nomination party. Any mineral lease selected from this Tract and awarded by the Louisiana State Mineral Board shall be without warranty of any kind, either express, implied, or statutory, including, but not limited to, the implied warranties of merchantability and fitness for a particular purpose. Should the mineral lease awarded by the Louisiana State Mineral Board be subsequently modified, cancelled or abrogated due to the existence of conflicting leases, operating agreements, private claims or other future obligations or conditions which may affect all or any portion of the leased Tract, it shall not relieve the Lessee of the obligation to pay any bonus due thereon to the Louisiana State Mineral Board, nor shall the Louisiana State Mineral Board be obligated to refund any consideration paid by the Lessor prior to such modification, cancellation, or abrogation, including, but not limited to, bonuses, rentals and royalties.

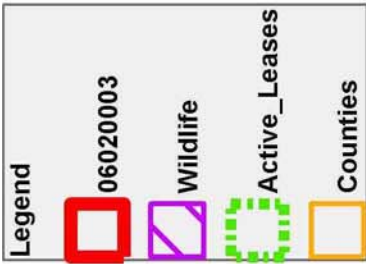
NOTE: The State of Louisiana does hereby reserve, and this lease shall be subject to, the imprescriptible right of surface use in the nature of a servitude in favor of the Department of Natural Resources, including its Offices and Commissions, for the sole purpose of implementing, constructing, servicing and maintaining approved coastal zone management and/or restoration projects. Utilization of any and all rights derived under this lease by the mineral lessee, its agents, successors or assigns, shall not interfere with nor hinder the reasonable surface use by the Department of Natural Resources, its Offices or Commissions, as herein above reserved.

NOTE: The Department of Wildlife and Fisheries has designated certain areas in the coastal waters of the State of Louisiana as Oyster Seed Bed Areas. The exact location of those Seed Bed Areas must be obtained from

the Department of Wildlife and Fisheries and any work done under a mineral lease from the State of Louisiana may necessarily be conducted in conformity with the rules and regulations promulgated by the said Department of Wildlife and Fisheries for Oyster Seed Bed Areas.

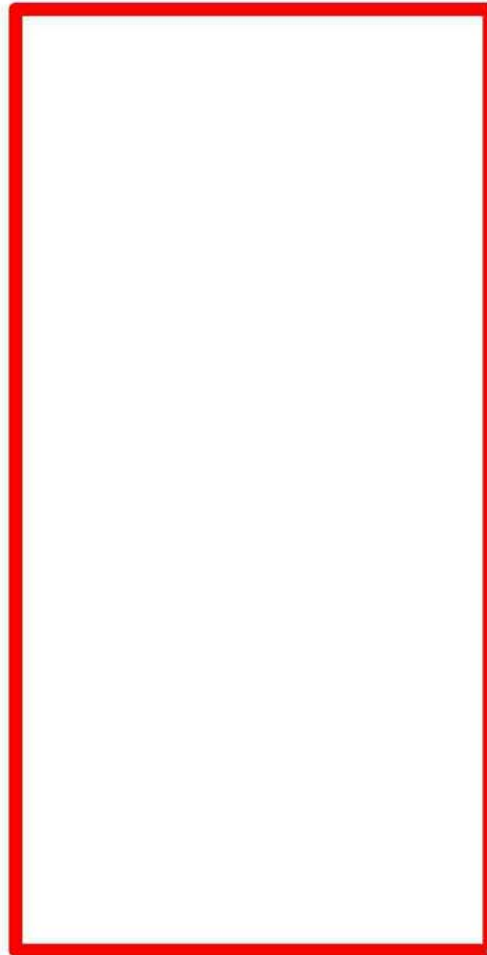
Applicant: PATRICK L. DONOHUE PETROLEUM PROPERTIES, INC.

Bidder	Cash Payment	Price/Acre	Rental	Oil	Gas	Other

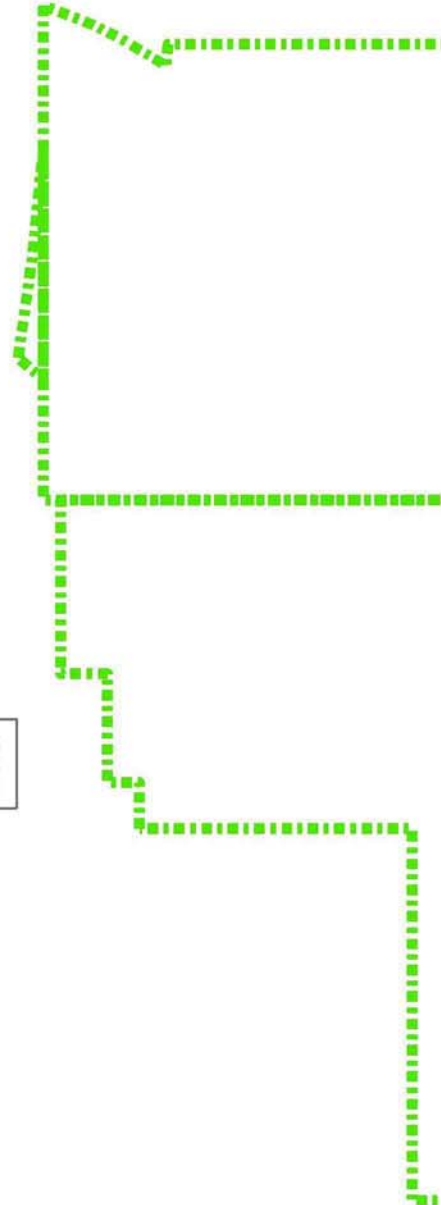


VERMILION PARISH

VERMILION BAY



P.O.B.



TRACT 38081 - Vermilion Parish, Louisiana

All of the lands now or formerly constituting the beds and bottoms of all water bodies of every nature and description the title of which vests in the State of Louisiana, together with all islands arising therein and other lands formed by accretion or by reliction, where allowed by law, excepting tax adjudicated lands, and not presently under mineral lease on February 8, 2006, situated in Vermilion Parish, Louisiana, and more particularly described as follows: Beginning at a point having Coordinates of X = 1,767,500.00 and Y = 378,100.00; thence South 2,840.80 feet to a point on the Northern boundary of State Lease No. 4011, as amended, having Coordinates of X = 1,767,500.00 and Y = 375,259.20; thence along the boundary of said State Lease No. 4011, as amended, the following courses: West 668.68 feet to a point having Coordinates of X = 1,766,831.32 and Y = 375,259.20; South 501.51 feet to a point having Coordinates of X = 1,766,831.32 and Y = 374,757.69; West 721.75 feet to a point having Coordinates of X = 1,766,109.57 and Y = 374,757.69; South 4,256.59 feet to a point having Coordinates of X = 1,766,109.57 and Y = 370,501.10; West 5,812.65 feet to a point having Coordinates of X = 1,760,296.92 and Y = 370,501.10; and South 5,187.25 feet to its Southwest corner having Coordinates of X = 1,760,296.92 and Y = 365,313.85; thence West 4,296.92 feet to a point having Coordinates of X = 1,756,000.00 and Y = 365,313.85; thence North 12,786.15 feet to a point having Coordinates of X = 1,756,000.00 and Y = 378,100.00; thence East 11,500.00 feet to the point of beginning, **LESS AND EXCEPT** any portion of State Lease No. 4011 which may lie within the above described tract, containing approximately **2,374.26 acres**, all as more particularly outlined on a plat on file in the Office of Mineral Resources, Department of Natural Resources. All bearings, distances and coordinates are based on Louisiana Coordinate System of 1927, (North or South Zone), where applicable.

NOTE: The above description of the Tract nominated for lease has been provided and corrected, where required, exclusively by the nomination party. Any mineral lease selected from this Tract and awarded by the Louisiana State Mineral Board shall be without warranty of any kind, either express, implied, or statutory, including, but not limited to, the implied warranties of merchantability and fitness for a particular purpose. Should the mineral lease awarded by the Louisiana State Mineral Board be subsequently modified, cancelled or abrogated due to the existence of conflicting leases, operating agreements, private claims or other future obligations or conditions which may affect all or any portion of the leased Tract, it shall not relieve the Lessee of the obligation to pay any bonus due thereon to the Louisiana State Mineral Board, nor shall the Louisiana State Mineral Board be obligated to refund any consideration paid by the Lessor prior to such modification, cancellation, or abrogation, including, but not limited to, bonuses, rentals and royalties.

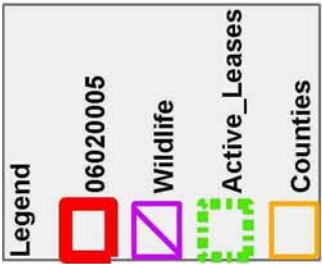
NOTE: The State of Louisiana does hereby reserve, and this lease shall be subject to, the imprescriptible right of surface use in the nature of a servitude in favor of the Department of Natural Resources, including its

Offices and Commissions, for the sole purpose of implementing, constructing, servicing and maintaining approved coastal zone management and/or restoration projects. Utilization of any and all rights derived under this lease by the mineral lessee, its agents, successors or assigns, shall not interfere with nor hinder the reasonable surface use by the Department of Natural Resources, its Offices or Commissions, as herein above reserved.

NOTE: The Department of Wildlife and Fisheries has designated certain areas in the coastal waters of the State of Louisiana as Oyster Seed Bed Areas. The exact location of those Seed Bed Areas must be obtained from the Department of Wildlife and Fisheries and any work done under a mineral lease from the State of Louisiana may necessarily be conducted in conformity with the rules and regulations promulgated by the said Department of Wildlife and Fisheries for Oyster Seed Bed Areas.

Applicant: PATRICK L. DONOHUE PETROLEUM PROPERTIES, INC.

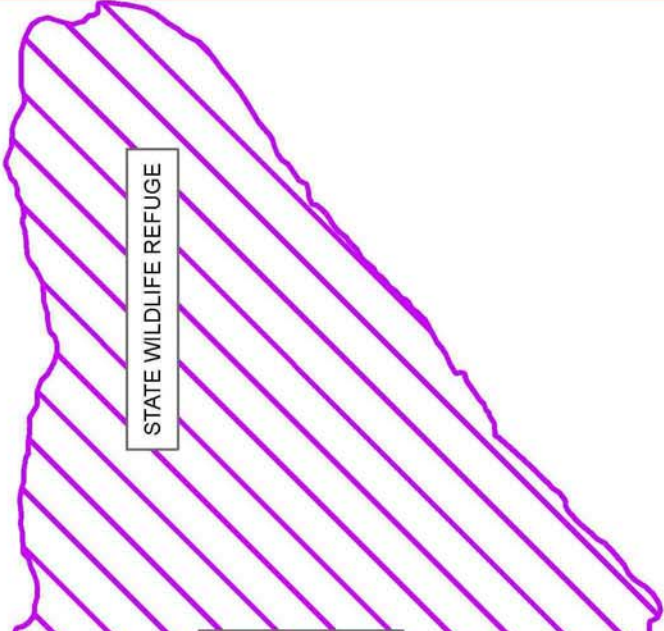
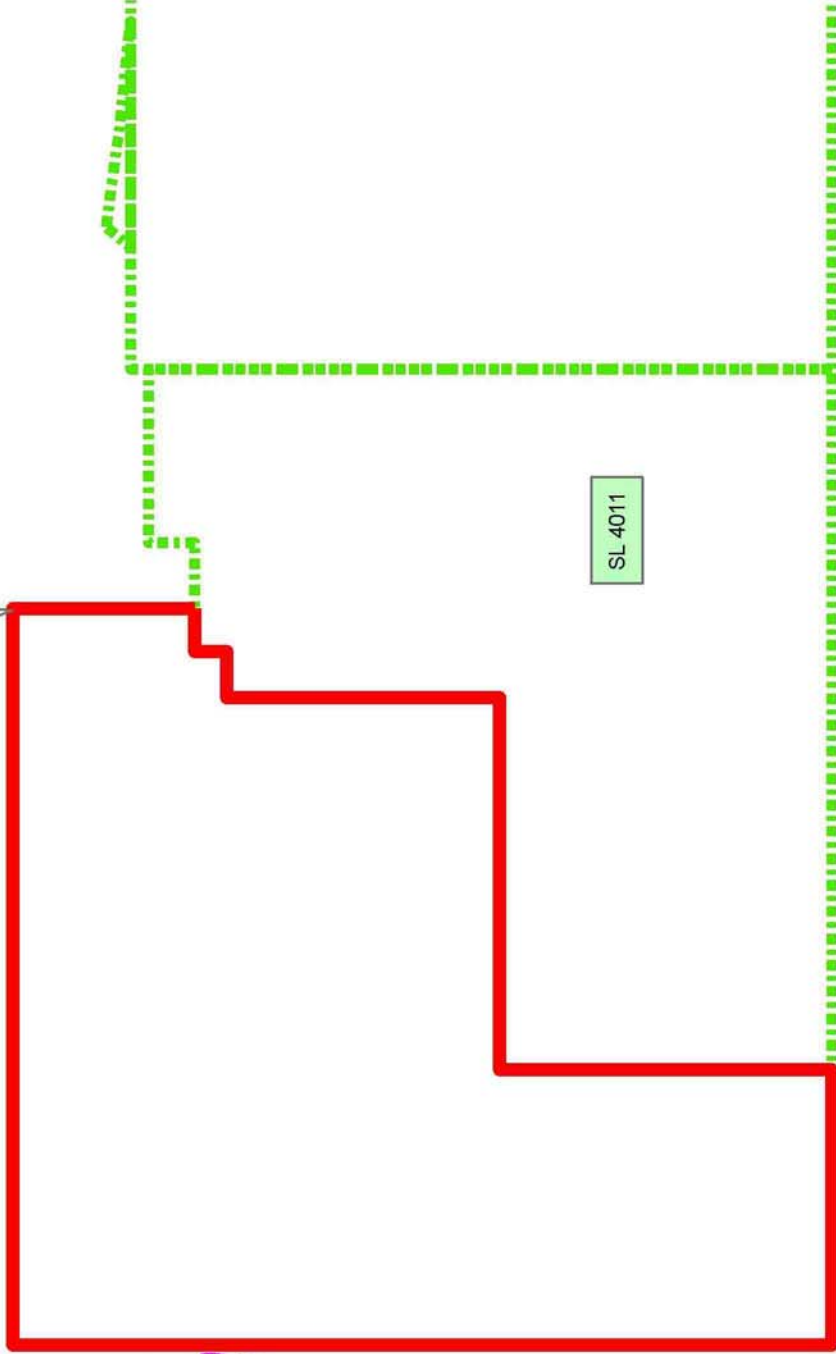
Bidder	Cash Payment	Price/Acre	Rental	Oil	Gas	Other



VERMILION BAY

VERMILION PARISH

P.O.B.



STATE WILDLIFE REFUGE

TRACT 38082 - Vermilion Parish, Louisiana

All of the lands now or formerly constituting the beds and bottoms of all water bodies of every nature and description the title of which vests in the State of Louisiana, together with all islands arising therein and other lands formed by accretion or by reliction, where allowed by law, excepting tax adjudicated lands, and not presently under mineral lease on February 8, 2006, situated in Vermilion Parish, Louisiana, and more particularly described as follows: Beginning at a point having Coordinates of X = 1,767,500.00 and Y = 378,100.00; thence East 14,700.00 feet to a point having Coordinates of X = 1,782,200.00 and Y = 378,100.00; thence South 8,580.65 feet to a point having Coordinates of X = 1,782,200.00 and Y = 369,519.35; thence West 3,839.71 feet to a point on the boundary of State Lease No. 3306, as amended, having Coordinates of X = 1,778,360.29 and Y = 369,519.35; thence along said boundary of State Lease No. 3306, as amended, the following courses: North 4,786.00 feet; North 84 degrees 55 minutes 35 seconds West 342.31 feet to a point having Coordinates of X = 1,778,019.32 and Y = 374,335.62, being also the Southeast corner of 15,500 feet RA SUA, created by Office of Conservation No. 834 D, effective July 22, 1997; Northeasterly with and along the Eastern boundary of said 15,500 feet RA SUA to a point having Coordinates of X = 1,778,969.32 and Y = 376,255.75; thence North 89 degrees 58 minutes 28 seconds West 2,301.59 feet along said boundary of State Lease No. 3306, as amended, to a point on the boundary of State Lease No. 17751 having Coordinates of X = 1,776,667.74 and Y = 376,256.78; thence along said boundary of State Lease No. 17751 the following courses: North 83 degrees 06 minutes 38 seconds West 360.34 feet; North 84 degrees 22 minutes 57 seconds West 1,225.89 feet; North 82 degrees 08 minutes 27 seconds West 1,645.46 feet; South 40 degrees 00 minutes 49 seconds West 504.83 to a point on the boundary of State Lease No. 3306, as amended, having Coordinates of X = 1,773,135.40 and Y = 376,258.35; thence along said boundary of State Lease No. 3306, as amended, the following courses: North 89 degrees 58 minutes 28 seconds West 1,893.58 feet; South 275.00 feet to the Northeast corner of State Lease No. 4011, as amended, having Coordinates of X = 1,771,241.82 and Y = 375,984.20; thence along the boundary of said State Lease No. 4011, as amended, the following courses: West 2,710.50 feet; South 725.00 feet; West 1,031.32 feet to a point having Coordinates of X = 1,767,500.00 and Y = 375,259.20; thence North 2,840.80 feet to the point of beginning, containing approximately **1,233.16 acres**, all as more particularly outlined on a plat on file in the Office of Mineral Resources, Department of Natural Resources. All bearings, distances and coordinates are based on Louisiana Coordinate System of 1927, (North or South Zone), where applicable.

NOTE: The above description of the Tract nominated for lease has been provided and corrected, where required, exclusively by the nomination party. Any mineral lease selected from this Tract and awarded by the Louisiana State Mineral Board shall be without warranty of any kind, either express, implied, or statutory, including, but not limited to, the implied warranties of merchantability and fitness for a particular

purpose. Should the mineral lease awarded by the Louisiana State Mineral Board be subsequently modified, cancelled or abrogated due to the existence of conflicting leases, operating agreements, private claims or other future obligations or conditions which may affect all or any portion of the leased Tract, it shall not relieve the Lessee of the obligation to pay any bonus due thereon to the Louisiana State Mineral Board, nor shall the Louisiana State Mineral Board be obligated to refund any consideration paid by the Lessor prior to such modification, cancellation, or abrogation, including, but not limited to, bonuses, rentals and royalties.

NOTE: The State of Louisiana does hereby reserve, and this lease shall be subject to, the imprescriptible right of surface use in the nature of a servitude in favor of the Department of Natural Resources, including its Offices and Commissions, for the sole purpose of implementing, constructing, servicing and maintaining approved coastal zone management and/or restoration projects. Utilization of any and all rights derived under this lease by the mineral lessee, its agents, successors or assigns, shall not interfere with nor hinder the reasonable surface use by the Department of Natural Resources, its Offices or Commissions, as herein above reserved.

NOTE: The Department of Wildlife and Fisheries has designated certain areas in the coastal waters of the State of Louisiana as Oyster Seed Bed Areas. The exact location of those Seed Bed Areas must be obtained from the Department of Wildlife and Fisheries and any work done under a mineral lease from the State of Louisiana may necessarily be conducted in conformity with the rules and regulations promulgated by the said Department of Wildlife and Fisheries for Oyster Seed Bed Areas.

Applicant: PATRICK L. DONOHUE PETROLEUM PROPERTIES, INC.

Bidder	Cash Payment	Price/Acre	Rental	Oil	Gas	Other

Legend

- 06020006
- Active_Leases
- Counties



VERMILION BAY

VERMILION PARISH

P.O.B.

SL 17751

SL 3306

SL 4011

TRACT 38083 - Terrebonne Parish, Louisiana

All of the lands now or formerly constituting the beds and bottoms of all water bodies of every nature and description the title of which vests in the State of Louisiana, together with all islands arising therein and other lands formed by accretion or by reliction, where allowed by law, excepting tax adjudicated lands, and not presently under mineral lease on February 8, 2006, situated in Terrebonne Parish, Louisiana, and more particularly described as follows: Beginning at a point having Coordinates of X = 2,206,375.37 and Y = 282,091.07; thence North 88 degrees 56 minutes 40 seconds East 6,478.16 feet to a point having Coordinates of X = 2,212,852.43 and Y = 282,210.40; thence South 00 degrees 00 minutes 09 seconds East 2,606.26 feet to the Northwest corner of State Lease No. 17754 having Coordinates of X = 2,212,852.54 and Y = 279,604.14; thence South 1,646.24 feet along the West boundary of said State Lease No. 17754 to a point having Coordinates of X = 2,212,852.54 and Y = 277,957.90; thence West 6,477.00 feet to a point having Coordinates of X = 2,206,375.54 and Y = 277,957.90; thence North 00 degrees 00 minutes 09 seconds West 4,133.17 feet to the point of beginning, containing approximately **200 acres**, all as more particularly outlined on a plat on file in the Office of Mineral Resources, Department of Natural Resources. All bearings, distances and coordinates are based on Louisiana Coordinate System of 1927, (North or South Zone), where applicable.

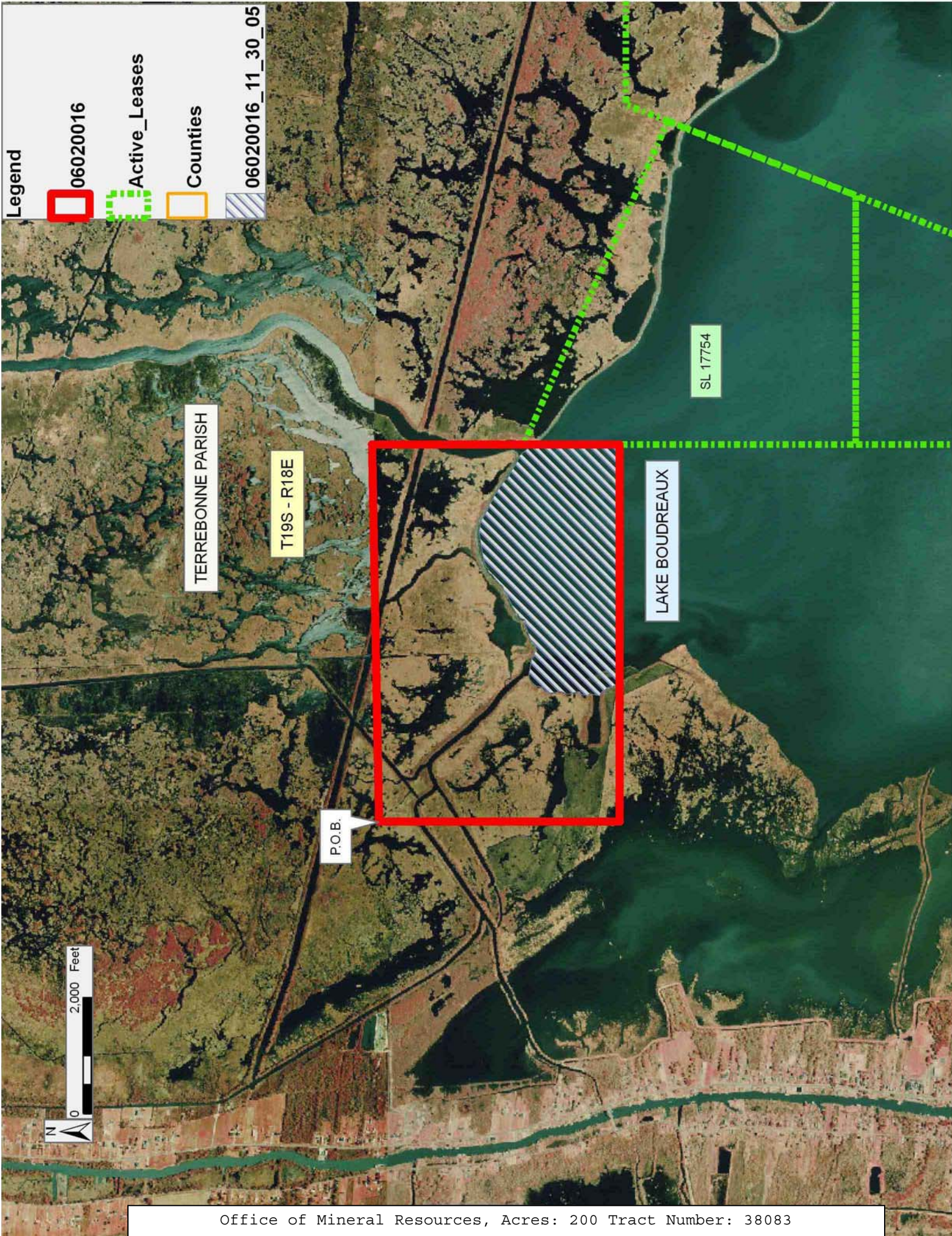
NOTE: The above description of the Tract nominated for lease has been provided and corrected, where required, exclusively by the nomination party. Any mineral lease selected from this Tract and awarded by the Louisiana State Mineral Board shall be without warranty of any kind, either express, implied, or statutory, including, but not limited to, the implied warranties of merchantability and fitness for a particular purpose. Should the mineral lease awarded by the Louisiana State Mineral Board be subsequently modified, cancelled or abrogated due to the existence of conflicting leases, operating agreements, private claims or other future obligations or conditions which may affect all or any portion of the leased Tract, it shall not relieve the Lessee of the obligation to pay any bonus due thereon to the Louisiana State Mineral Board, nor shall the Louisiana State Mineral Board be obligated to refund any consideration paid by the Lessor prior to such modification, cancellation, or abrogation, including, but not limited to, bonuses, rentals and royalties.

NOTE: The State of Louisiana does hereby reserve, and this lease shall be subject to, the imprescriptible right of surface use in the nature of a servitude in favor of the Department of Natural Resources, including its Offices and Commissions, for the sole purpose of implementing, constructing, servicing and maintaining approved coastal zone management and/or restoration projects. Utilization of any and all rights derived under this lease by the mineral lessee, its agents, successors or assigns, shall not interfere with nor hinder the reasonable surface use by the Department of Natural Resources, its Offices or Commissions, as herein above reserved.

NOTE: The Department of Wildlife and Fisheries has designated certain areas in the coastal waters of the State of Louisiana as Oyster Seed Bed Areas. The exact location of those Seed Bed Areas must be obtained from the Department of Wildlife and Fisheries and any work done under a mineral lease from the State of Louisiana may necessarily be conducted in conformity with the rules and regulations promulgated by the said Department of Wildlife and Fisheries for Oyster Seed Bed Areas.

Applicant: THEOPHILUS OIL GAS & LAND SERVICES LLC

Bidder	Cash Payment	Price/Acre	Rental	Oil	Gas	Other



Legend



06020016



Active_Leases



Counties



06020016_11_30_05

TERREBONNE PARISH

T19S - R18E

LAKE BOUDREAUX

SL 17754

P.O.B.

2,000 Feet

