

TRACT 37059 - Portion of Blocks 13, and 14, Vermilion Area, Revised, Vermilion Parish, Louisiana

The beds and bottoms of all water bodies belonging to the State of Louisiana located in Blocks 13, and 14, Vermilion Area, Revised, together with any present lands formed by accretion to the shoreline or islands formed therein, located in Vermilion Parish, Louisiana, owned by and not presently under mineral lease as of February 9, 2005, from the State of Louisiana, the geographical area of which is more fully described as follows: Beginning at the Northeast corner of Block 14, Vermilion Area, Revised, also being the Northwest corner of Block 13, having Coordinates of X = 1,691,656.32 and Y = 311,024.77; thence East 9,023.68 feet along the North line of said Block 13 to its Northwest corner, having Coordinates of X = 1,700,680.00 and Y = 311,024.77; thence South 8,200.00 feet along the East line of said Block 13 to its Southeast corner, having Coordinates of X = 1,700,680.00 and Y = 302,824.77; thence West 9,023.68 feet along the South Line of said Block 13 to its Southwest corner and the Southeast corners of said Block 14 and State Lease No. 861, as amended having Coordinates of X = 1,691,656.32 and Y = 302,824.77; thence North 2,750.35 feet along the East lines of said Block 14 and said State Lease No. 861 to the most southern Northeast corner of said State Lease No. 861; thence North 45 degrees 09 minutes 47 seconds West 7,728.99 feet on the boundary of said State Lease No. 861 to the North line of said Block 14, having Coordinates of X = 1,686,175.56 and Y = 311,024.77; thence East 5,480.76 feet along the North line of said Block 14 to the point of beginning, containing approximately **2,041.51 acres**, all as more particularly outlined on a plat on file in the Office of Mineral Resources, Department of Natural Resources. All bearings, distances and coordinates are based on Louisiana Coordinate System of 1927, (North or South Zone).

NOTE: The above description of the Tract nominated for lease has been provided and corrected, where required, exclusively by the nomination party. Any mineral lease selected from this Tract and awarded by the Louisiana State Mineral Board shall be without warranty of any kind, either express, implied, or statutory, including, but not limited to, the implied warranties of merchantability and fitness for a particular purpose. Should the mineral lease awarded by the Louisiana State Mineral Board be subsequently modified, cancelled or abrogated due to the existence of conflicting leases, operating agreements, private claims or other future obligations or conditions which may affect all or any portion of the leased Tract, it shall not relieve the Lessee of the obligation to pay any bonus due thereon to the Louisiana State Mineral Board, nor shall the Louisiana State Mineral Board be obligated to refund any consideration paid by the Lessor prior to such modification, cancellation, or abrogation, including, but not limited to, bonuses, rentals and royalties.

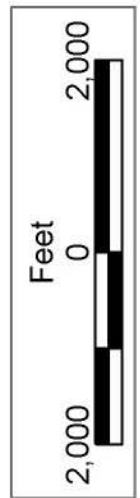
NOTE: The State of Louisiana does hereby reserve, and this lease shall be subject to, the imprescriptible right of surface use in the nature of a servitude in favor of the Department of Natural Resources, including its

Offices and Commissions, for the sole purpose of implementing, constructing, servicing and maintaining approved coastal zone management and/or restoration projects. Utilization of any and all rights derived under this lease by the mineral lessee, its agents, successors or assigns, shall not interfere with nor hinder the reasonable surface use by the Department of Natural Resources, its Offices or Commissions, as herein above reserved.

NOTE: The Department of Wildlife and Fisheries has designated certain areas in the coastal waters of the State of Louisiana as Oyster Seed Bed Areas. The exact location of those Seed Bed Areas must be obtained from the Department of Wildlife and Fisheries and any work done under a mineral lease from the State of Louisiana may necessarily be conducted in conformity with the rules and regulations promulgated by the said Department of Wildlife and Fisheries for Oyster Seed Bed Areas.

Applicant: Cypress Energy Corporation

Bidder	Cash Payment	Price/ Acre	Rental	Oil	Gas	Other



VERMILION PARISH

SL 17058

BLOCK VR0008

SL 17745

BLOCK VR0028

BLOCK VR0013

P.O.B.
X=1,691,656.32
Y=311,024.77

BLOCK VR0014

VERMILION AREA, REVISED

SL 16672

BLOCK VR0007

SL 861

SL 3522

BLOCK VR0027

TRACT 37060 - Portion of Blocks 69, and 70, Main Pass Area, Revised, and Block 1, South Pass Area, Plaquemines Parish, Louisiana

The beds and bottoms of all water bodies belonging to the State of Louisiana located in Blocks 69, and 70, Main Pass Area, Revised, and Block 1, South Pass Area, together with any present lands formed by accretion to the shoreline or islands formed therein, located in Plaquemines Parish, Louisiana, owned by and not presently under mineral lease as of February 9, 2005, from the State of Louisiana, the geographical area of which is more fully described as follows: Beginning at Southwest corner of State Lease No. 17815, located within Block 69, Main Pass Area, Revised, having Coordinates of X = 2,736,328.08 and Y = 218,325.00; thence East 8,874.95 feet along the South Line of said State Lease No. 17815 to a point within Block 70, having Coordinates of X = 2,745,203.03 and y = 218,325.00; thence South 4,173.46 feet to a point within Block 1, South Pass area, said point also located on the West Line of the Southern portion of State Lease No. 988, as amended, having Coordinates of X = 2,745,203.03 and Y = 214,151.54; thence South 33 degrees 41 minutes 24 seconds West 6,771.04 feet along the West boundary of said Southern portion of State Lease No. 988 to its Southwest corner and a point on the North boundary of Pass A Loutre Wildlife Management Area having Coordinates of X = 2,741,447.13 and Y = 208,517.70; thence along the Northern boundary of said Wildlife Management Area the following: Northwesterly along an arc having a radius of 21,825.00 feet and a center at X = 2,725,759.55 and Y = 193,344.35 to a point having Coordinates of X = 2,739,419.00 and Y = 210,366.40; Westerly along an arc having a Radius of 19,550.00 feet and a center at X = 2,731,935.94 and Y = 192,305.22 to a point having Coordinates of X = 2,730,339.72 and Y = 211,789.94; thence North 32 degrees 38 minutes 35 seconds East 334.81 feet to the Southwest corner of the Northern portion of said State Lease No. 988, having Coordinates of X = 2,730,159.12 and Y = 212,071.87; thence along the boundaries of said State Lease No. 988 the following: North 77 degrees 14 minutes 33 seconds East 308.50 feet, North 07 degrees 08 minutes 42 seconds West 2,854.16 feet and West 640.00 feet to a point on the North Line of said State Lease No. 988 and the Southwest corner of said Block 69, having Coordinates of X = 2,730,175.00 and Y = 214,972.00; thence North 1,843.00 feet along the West Line of said Block 69 to the Southwest corner of State Lease No. 1278, as amended: having Coordinates of X =2,730,175.00 and Y = 216,815.00; thence along the Southern boundary of said State Lease No. 1278 the following: North 75 degrees 04 minutes 07 seconds East 155.24 feet, North 66 degrees 34 minutes 17 seconds East 326.96 feet, North 57 degrees 38 minutes 00 seconds East 420.30 feet, North 59 degrees 18 minutes 01 seconds East 372.16 feet, North 64 degrees 08 minutes 53 seconds East 538.93 feet, North 65 degrees 22 minutes 35 seconds East 528.02 feet, North 56 degrees 53 minutes 19 seconds East 274.59 feet, North 25 degrees 12 minutes 04 seconds East 93.94 feet, North 03 degrees 39 minutes 08 seconds West 235.48 feet and East 890.56 feet to a point having Coordinates of X = 2,733,410.56 and Y = 218,325.00 and North 51 degrees 07 minutes 12 seconds East 4,809.69 feet to a point having Coordinates of X = 2,737,154.71 and Y = 221,344.00, being a point on the West Line of said State Lease No.

17815; thence South 15 degrees 18 minutes 46 seconds West 3,130.13 feet to the point of beginning, containing approximately **2,492.79 acres**, all as more particularly outlined on a plat on file in the Office of Mineral Resources, Department of Natural Resources. All bearings, distances and coordinates are based on Louisiana Coordinate System of 1927, (North or South Zone).

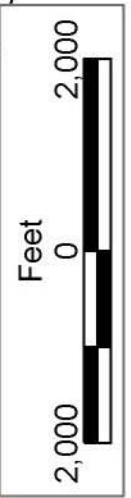
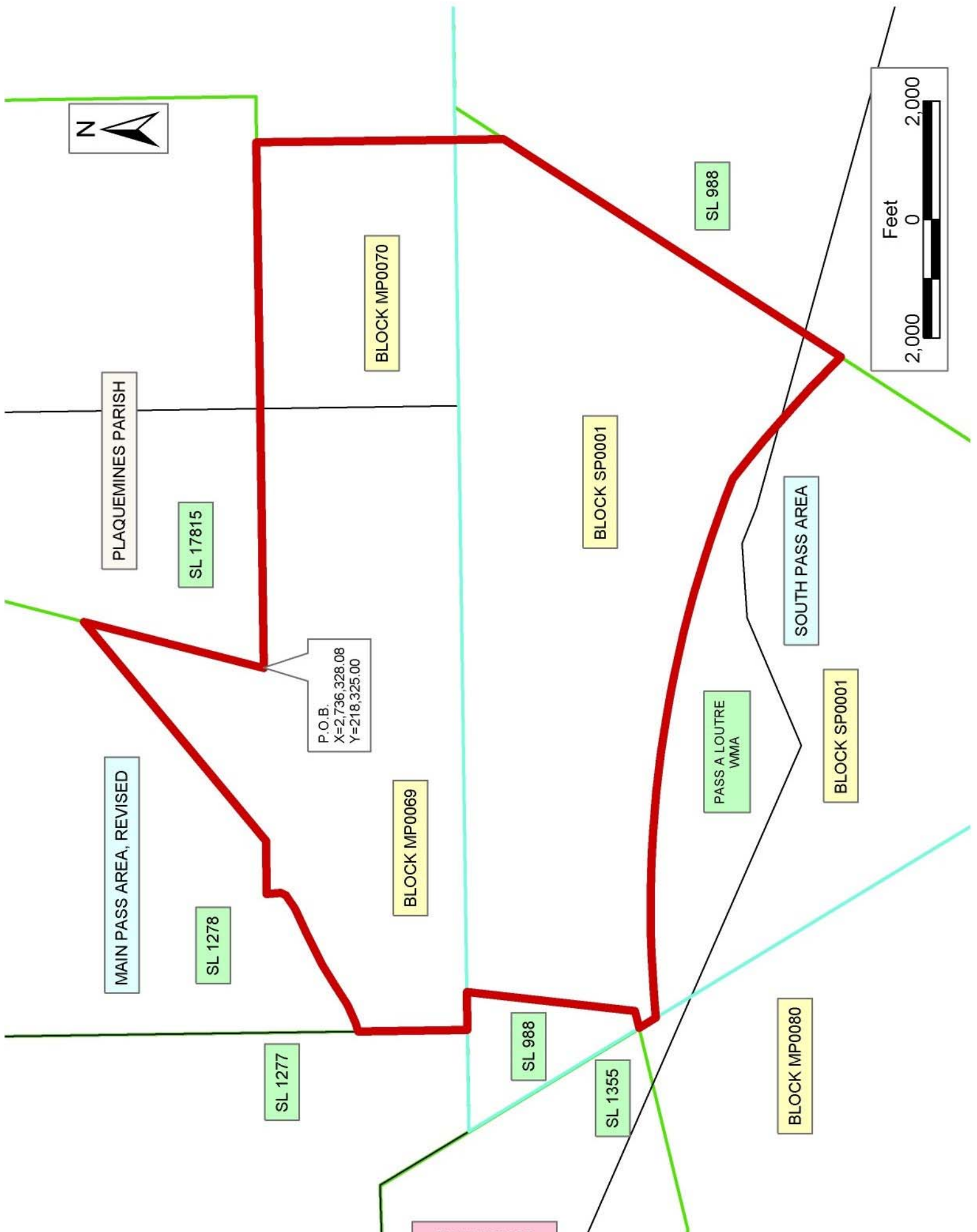
NOTE: The above description of the Tract nominated for lease has been provided and corrected, where required, exclusively by the nomination party. Any mineral lease selected from this Tract and awarded by the Louisiana State Mineral Board shall be without warranty of any kind, either express, implied, or statutory, including, but not limited to, the implied warranties of merchantability and fitness for a particular purpose. Should the mineral lease awarded by the Louisiana State Mineral Board be subsequently modified, cancelled or abrogated due to the existence of conflicting leases, operating agreements, private claims or other future obligations or conditions which may affect all or any portion of the leased Tract, it shall not relieve the Lessee of the obligation to pay any bonus due thereon to the Louisiana State Mineral Board, nor shall the Louisiana State Mineral Board be obligated to refund any consideration paid by the Lessor prior to such modification, cancellation, or abrogation, including, but not limited to, bonuses, rentals and royalties.

NOTE: The State of Louisiana does hereby reserve, and this lease shall be subject to, the imprescriptible right of surface use in the nature of a servitude in favor of the Department of Natural Resources, including its Offices and Commissions, for the sole purpose of implementing, constructing, servicing and maintaining approved coastal zone management and/or restoration projects. Utilization of any and all rights derived under this lease by the mineral lessee, its agents, successors or assigns, shall not interfere with nor hinder the reasonable surface use by the Department of Natural Resources, its Offices or Commissions, as herein above reserved.

NOTE: The Department of Wildlife and Fisheries has designated certain areas in the coastal waters of the State of Louisiana as Oyster Seed Bed Areas. The exact location of those Seed Bed Areas must be obtained from the Department of Wildlife and Fisheries and any work done under a mineral lease from the State of Louisiana may necessarily be conducted in conformity with the rules and regulations promulgated by the said Department of Wildlife and Fisheries for Oyster Seed Bed Areas.

Applicant: Leslie M. Cooper

Bidder	Cash Payment	Price/ Acre	Rental	Oil	Gas	Other



P.O.B.
X=2,736,328.08
Y=218,325.00

MAIN PASS AREA, REVISED

SL 17815

SL 1278

SL 1277

SL 988

SL 1355

SL 988

PASS A LOUTRE
WMA

BLOCK MP0080

BLOCK SP0001

SOUTH PASS AREA

BLOCK SP0001

BLOCK MP0069

BLOCK MP0070

PLAQUEMINES PARISH

TRACT 37061 - Portion of Block 56, West Delta Area, Plaquemines Parish, Louisiana

The beds and bottoms of all water bodies belonging to the State of Louisiana located in Block 56, West Delta Area, together with any present lands formed by accretion to the shoreline or islands formed therein, located in Plaquemines Parish, Louisiana, owned by and not presently under mineral lease as of February 9, 2005, from the State of Louisiana, the geographical area of which is more fully described as follows: Beginning at the Northeast corner of Block 56, West Delta Area having Coordinates of X = 2,605,477.93 and Y = 144,676.30; thence South 10,421.05 feet on the East line of said Block 56 to a point having Coordinates of X = 2,605,477.93 and Y = 134,255.25; thence West 8,255.09 feet to a point having Coordinates of X = 2,597,222.84 and Y = 134,255.25; thence Northerly on a straight line to a point on the North line of said Block 56 having Coordinates of X = 2,597,216.66 and Y = 144,676.30; thence East 8,261.27 feet on the North line of said Block 56 to the point of beginning, **LESS AND EXCEPT** all those portions of State Lease No. 2549 that may lie within the above described tract, containing approximately **1,975.64 acres, LESS AND EXCEPT** that portion thereof, if any, lying seaward of the line three nautical miles from the coast line of Louisiana, as said three mile line has been decreed by the Supreme Court of the United States, as determined by a Special Master appointed therein, in litigation styled **United States v. State of Louisiana et al No. 9 Original**, in 1975, all as more particularly outlined on a plat in the Office of Mineral Resources, Department of Natural Resources. All bearings, distances and coordinates are based on the Louisiana Coordinate System of 1927, (South Zone).

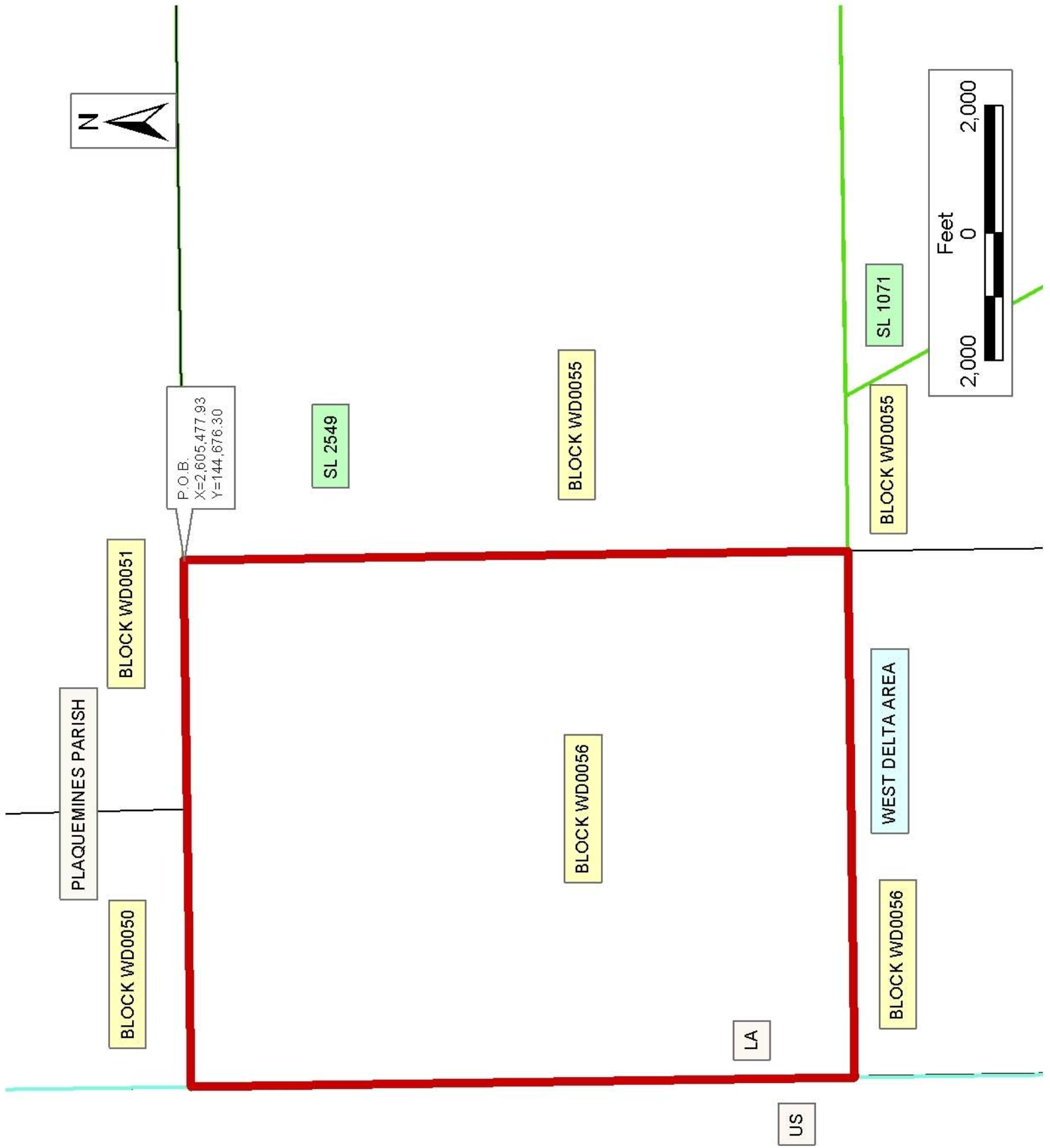
NOTE: The above description of the Tract nominated for lease has been provided and corrected, where required, exclusively by the nomination party. Any mineral lease selected from this Tract and awarded by the Louisiana State Mineral Board shall be without warranty of any kind, either express, implied, or statutory, including, but not limited to, the implied warranties of merchantability and fitness for a particular purpose. Should the mineral lease awarded by the Louisiana State Mineral Board be subsequently modified, cancelled or abrogated due to the existence of conflicting leases, operating agreements, private claims or other future obligations or conditions which may affect all or any portion of the leased Tract, it shall not relieve the Lessee of the obligation to pay any bonus due thereon to the Louisiana State Mineral Board, nor shall the Louisiana State Mineral Board be obligated to refund any consideration paid by the Lessor prior to such modification, cancellation, or abrogation, including, but not limited to, bonuses, rentals and royalties.

NOTE: The State of Louisiana does hereby reserve, and this lease shall be subject to, the imprescriptible right of surface use in the nature of a servitude in favor of the Department of Natural Resources, including its Offices and Commissions, for the sole purpose of implementing, constructing, servicing and maintaining approved coastal zone management

and/or restoration projects. Utilization of any and all rights derived under this lease by the mineral lessee, its agents, successors or assigns, shall not interfere with nor hinder the reasonable surface use by the Department of Natural Resources, its Offices or Commissions, as herein above reserved.

Applicant: Harold J. Anderson, Inc.

Bidder	Cash Payment	Price/ Acre	Rental	Oil	Gas	Other



TRACT 37062 - Portion of Block 42, South Pass Area, Plaquemines Parish, Louisiana

The beds and bottoms of all water bodies belonging to the State of Louisiana located in Block 42, South Pass Area, together with any present lands formed by accretion to the shoreline or islands formed therein, located in Plaquemines Parish, Louisiana, owned by and not presently under mineral lease as of February 9, 2005, from the State of Louisiana, the geographical area of which is more fully described as follows: Beginning at a point within Block 42, South Pass Area, also being a point on the East line of State Lease No. 12967, having Coordinates of X = 2,616,527.14 and Y = 89,529.00; thence along the boundary of said State Lease No. 12967 the following courses: North 2,461.00 feet to a point having Coordinates of X = 2,616,527.14 and Y = 91,990.00; and West 599.14 feet to the Northwest corner of said State Lease No. 12967, also being a point on the West line of said Block 42 and having Coordinates of X = 2,615,928.00 and Y = 91,990.00; thence North 4,918.00 feet to the Northwest corner of said Block 42, having Coordinates of X = 2,615,928.00 and Y = 96,908.00; thence East 14,758.00 feet along the North line of said Block 42 to its Northeast corner, having Coordinates of X = 2,630,686.00 and Y = 96,908.00; thence South 7,379.00 feet along the East line of said Block 42 to the Northeast corner of State Lease No. 16869, having Coordinates of X = 2,630,686.00 and Y = 89,529.00; thence West 5,150.00 feet to the Northwest corner of said State Lease No. 16869, having Coordinates of X = 2,625,536.00 and Y = 89,529.00; thence West 9,008.86 feet to the point of beginning, containing approximately **2,466.13 acres**, all as more particularly outlined on a plat on file in the Office of Mineral Resources, Department of Natural Resources. All bearings, distances and coordinates are based on Louisiana Coordinate System of 1927, (North or South Zone).

NOTE: The above description of the Tract nominated for lease has been provided and corrected, where required, exclusively by the nomination party. Any mineral lease selected from this Tract and awarded by the Louisiana State Mineral Board shall be without warranty of any kind, either express, implied, or statutory, including, but not limited to, the implied warranties of merchantability and fitness for a particular purpose. Should the mineral lease awarded by the Louisiana State Mineral Board be subsequently modified, cancelled or abrogated due to the existence of conflicting leases, operating agreements, private claims or other future obligations or conditions which may affect all or any portion of the leased Tract, it shall not relieve the Lessee of the obligation to pay any bonus due thereon to the Louisiana State Mineral Board, nor shall the Louisiana State Mineral Board be obligated to refund any consideration paid by the Lessor prior to such modification, cancellation, or abrogation, including, but not limited to, bonuses, rentals and royalties.

NOTE: The State of Louisiana does hereby reserve, and this lease shall be subject to, the imprescriptible right of surface use in the nature of a servitude in favor of the Department of Natural Resources, including its Offices and Commissions, for the sole purpose of implementing,

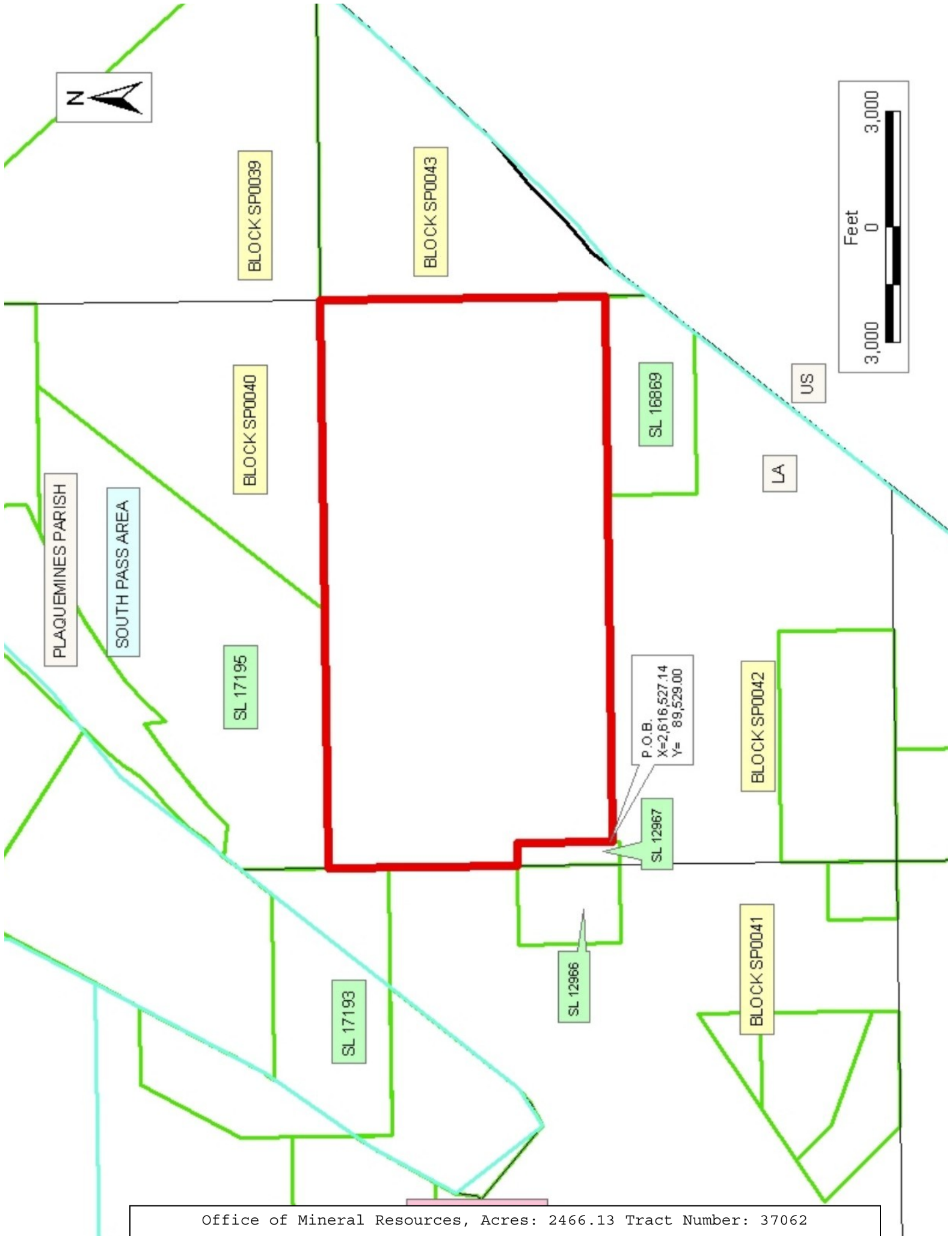
constructing, servicing and maintaining approved coastal zone management and/or restoration projects. Utilization of any and all rights derived under this lease by the mineral lessee, its agents, successors or assigns, shall not interfere with nor hinder the reasonable surface use by the Department of Natural Resources, its Offices or Commissions, as herein above reserved.

NOTE: It appears, according to our records, that a portion of this Tract is located within the restrictive safety fairway area as set out by the Corps of Engineers, U.S. Army and/or the restrictive anchorage area as set out by the U.S. Coast Guard.

NOTE: The Department of Wildlife and Fisheries has designated certain areas in the coastal waters of the State of Louisiana as Oyster Seed Bed Areas. The exact location of those Seed Bed Areas must be obtained from the Department of Wildlife and Fisheries and any work done under a mineral lease from the State of Louisiana may necessarily be conducted in conformity with the rules and regulations promulgated by the said Department of Wildlife and Fisheries for Oyster Seed Bed Areas.

Applicant: Trebuchet Exploration

Bidder	Cash Payment	Price/ Acre	Rental	Oil	Gas	Other



TRACT 37063 - Portion of Block 42, South Pass Area, Plaquemines Parish, Louisiana

The beds and bottoms of all water bodies belonging to the State of Louisiana located in Block 42, South Pass Area, together with any present lands formed by accretion to the shoreline or islands formed therein, located in Plaquemines Parish, Louisiana, owned by and not presently under mineral lease as of February 9, 2005, from the State of Louisiana, the geographical area of which is more fully described as follows: Beginning at a point within Block 42, South Pass Area, also being on the East line of State Lease No. 12967, having Coordinates of X = 2,616,527.14 and Y = 89,529.00; thence East 9,008.86 feet to the Northwest corner of State Lease No. 16869, having Coordinates of X = 2,625,536.00 and Y = 89,529.00; thence along the boundary of said State Lease No. 16869 the following courses: South 2,300.00 feet to a point having Coordinates of X = 2,625,536.00 and Y = 87,229.00; and East 4,182.80 feet to a point on the State/Federal boundary, having Coordinates of X = 2,629,718.80 and Y = 87,229.00; thence along said State/Federal boundary the following courses: Southwesterly on a straight line to a point having Coordinates of X = 2,629,389 and Y = 86,821; Southwesterly on a straight line to a point having Coordinates of X = 2,626,027 and Y = 82,661; and Southwesterly on a straight line to a point on the South line of said Block 42, having Coordinates of X = 2,625,613.54 and Y = 82,150.00; thence West 3,685.54 feet along said South line of said Block 42 to the Southeast corner of State Lease No. 18030, having Coordinates of X = 2,621,928.00 and Y = 82,150.00; thence along the boundary of said State Lease No. 18030 the following courses: North 3,000.00 feet to a point having Coordinates of X = 2,621,928.00 and Y = 85,150.00; and West 6,000.00 feet to its Northwest corner, also being a point on the West line of said Block 42 and having Coordinates of X = 2,615,928.00 and Y = 85,150.00; thence North 4,200.00 feet along said West line to the Southwest corner of said State Lease No. 12967, having Coordinates of X = 2,615,928.00 and Y = 89,350.00; thence East 599.14 feet to the Southeast corner of said State Lease No. 12967, having Coordinates of X = 2,616,527.14 and Y = 89,350.00; thence North 179.00 feet to the point of beginning, containing approximately **1,460.29 acres, LESS AND EXCEPT** that portion thereof, if any, lying seaward of the line three nautical miles from the coast line of Louisiana, as said three mile line has been decreed by the Supreme Court of the United States, as determined by a Special Master appointed therein, in litigation styled **United States v. State of Louisiana et al No. 9 Original**, in 1975, all as more particularly outlined on a plat in the Office of Mineral Resources, Department of Natural Resources. All bearings, distances and coordinates are based on the Louisiana Coordinate System of 1927, (South Zone).

NOTE: The above description of the Tract nominated for lease has been provided and corrected, where required, exclusively by the nomination party. Any mineral lease selected from this Tract and awarded by the Louisiana State Mineral Board shall be without warranty of any kind, either express, implied, or statutory, including, but not limited to, the implied warranties of merchantability and fitness for a particular

purpose. Should the mineral lease awarded by the Louisiana State Mineral Board be subsequently modified, cancelled or abrogated due to the existence of conflicting leases, operating agreements, private claims or other future obligations or conditions which may affect all or any portion of the leased Tract, it shall not relieve the Lessee of the obligation to pay any bonus due thereon to the Louisiana State Mineral Board, nor shall the Louisiana State Mineral Board be obligated to refund any consideration paid by the Lessor prior to such modification, cancellation, or abrogation, including, but not limited to, bonuses, rentals and royalties.

NOTE: The State of Louisiana does hereby reserve, and this lease shall be subject to, the imprescriptible right of surface use in the nature of a servitude in favor of the Department of Natural Resources, including its Offices and Commissions, for the sole purpose of implementing, constructing, servicing and maintaining approved coastal zone management and/or restoration projects. Utilization of any and all rights derived under this lease by the mineral lessee, its agents, successors or assigns, shall not interfere with nor hinder the reasonable surface use by the Department of Natural Resources, its Offices or Commissions, as herein above reserved.

NOTE: It appears, according to our records, that a portion of this Tract is located within the restrictive safety fairway area as set out by the Corps of Engineers, U.S. Army and/or the restrictive anchorage area as set out by the U.S. Coast Guard.

Applicant: Trebuchet Exploration

Bidder	Cash Payment	Price/ Acre	Rental	Oil	Gas	Other



PLAQUEMINES PARISH

SOUTH PASS AREA

BLOCK SP0042

P.O.B.
X=2,616,527.14
Y= 89,529.00

SL 12967

SL 12966

SL 17199

SL 16869

BLOCK SP0041

SL 18030

SL 18129

LA

US

BLOCK SP0057

BLOCK SP0058