

TRACT 35990 - Portion of Block 31, Main Pass Area, Revised, Plaquemines Parish, Louisiana

All of the lands now or formerly constituting the beds and bottoms of all water bodies of every nature and description the title of which vests in the State of Louisiana, together with all islands arising therein and other lands formed by accretion or by reliction, where allowed by law, excepting tax adjudicated lands, and not presently under mineral lease on January 14, 2004, situated in Plaquemines Parish, Louisiana, and more particularly described as follows: Beginning at the Northeast corner of Block 31, Main Pass Area, Revised, having Coordinates of X = 2,635,350.00 and Y = 307,580.00; thence South 5,673.62 feet along the East line of said Block 31 to a point, also being the Northeast corner of State Lease No. 12002, as amended having Coordinates of X = 2,635,350.00 and Y = 301,906.38; thence along the boundary of said State Lease No. 12002 the following courses: South 78 degrees 33 minutes 21 seconds West 881.07 feet, South 75 degrees 09 minutes 03 seconds West 593.20 feet, South 67 degrees 31 minutes 25 seconds West 598.99 feet, South 62 degrees 46 minutes 18 seconds West 618.96 feet, South 54 degrees 53 minutes 40 seconds West 979.30 feet and South 50 degrees 08 minutes 29 seconds West 466.80 feet to a point on the Western boundary of said State Lease No. 12002 having Coordinates of X = 2,631,649.71 and Y = 300,205.00; thence West 4,560.95 feet to a point on the Eastern boundary line of State Lease No. 17294 having Coordinates of X = 2,627,088.75 and Y = 300,205.00; thence along the boundary of said State Lease No. 17294 the following courses: North 30 degrees 00 minutes 01 seconds West 2,817.48 feet and South 63 degrees 15 minutes 14 seconds West 5,688.64 feet to a point on the Northern boundary line of said State Lease No. 17294, also being a point on the West line of said Block 31 having Coordinates of X = 2,620,600.00 and Y = 300,084.89; thence North 7,495.11 feet along the West line of said Block 31 to its Northwest corner having Coordinates of X = 2,620,600.00 and Y = 307,580.00; thence East 6,074.81 feet along the North line of said Block 31 to a point, also being the Northwest corner of State Lease No. 16926 having Coordinates of X = 2,626,674.81 and Y = 307,580.00; thence along the boundary of said State Lease No. 16926 the following courses: South 11 degrees 49 minutes 26 seconds East 1,616.29 feet and North 72 degrees 22 minutes 24 seconds East 1,016.74 feet to the Southeast corner of said State Lease No. 16926, also being the Southwest corner of State Lease No. 16928 having Coordinates of X = 2,627,975.00 and Y = 306,305.88; thence along the boundary of said State Lease No. 16928 the following courses: North 72 degrees 22 minutes 24 seconds East 2,143.64 feet and North 13 degrees 13 minutes 42 seconds West 642.04 feet to the Northeast corner of said State Lease No. 16928, also being a point on the North line of said Block 31 having Coordinates of X = 2,629,871.08 and Y = 307,580.00; thence East 5,478.92 feet along the North line of said Block 31 to the point of beginning, containing approximately **2,149.58 acres**, all as more particularly outlined on a plat on file in the Office of Mineral Resources, Department of Natural Resources. All bearings, distances and coordinates are based on Louisiana Coordinate System of 1927, (North or South Zone), where applicable.

NOTE: The above description of the Tract nominated for lease has been provided and corrected, where required, exclusively by the nomination party. Any mineral lease selected from this Tract and awarded by the Louisiana State Mineral Board shall be without warranty of any kind, either express, implied, or statutory, including, but not limited to, the implied warranties of merchantability and fitness for a particular purpose. Should the mineral lease awarded by the Louisiana State Mineral Board be subsequently modified, cancelled or abrogated due to the existence of conflicting leases, operating agreements, private claims or other future obligations or conditions which may affect all or any portion of the leased Tract, it shall not relieve the Lessee of the obligation to pay any bonus due thereon to the Louisiana State Mineral Board, nor shall the Louisiana State Mineral Board be obligated to refund any consideration paid by the Lessor prior to such modification, cancellation, or abrogation, including, but not limited to, bonuses, rentals and royalties.

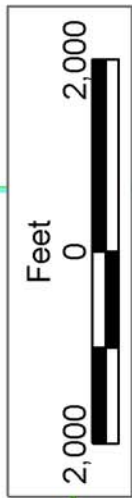
NOTE: The State of Louisiana does hereby reserve, and this lease shall be subject to, the imprescriptible right of surface use in the nature of a servitude in favor of the Department of Natural Resources, including its Offices and Commissions, for the sole purpose of implementing, constructing, servicing and maintaining approved coastal zone management and/or restoration projects. Utilization of any and all rights derived under this lease by the mineral lessee, its agents, successors or assigns, shall not interfere with nor hinder the reasonable surface use by the Department of Natural Resources, its Offices or Commissions, as herein above reserved.

Applicant: Omni Energy, Inc.

| Bidder | Cash Payment | Price/ Acre | Rental | Oil | Gas | Other |
|--------|-----------------|----------------|--------|-----|-----|-------|
| | | | | | | |
| | | | | | | |
| | | | | | | |
| | | | | | | |



BRETON
SOUND
AREA



P.O.B.
X=2,635,350.00
Y=307,580.00

MAIN PASS AREA, REVISED

SL 12002

SL 16937

SL 16928

SL 16934

SL 16926

BLOCK MP0031

PLAQUEMINES PARISH

BLOCK MP0026

SL 17294

SL 17626

SL 17625

SL 14441

SL 17293

TRACT 35991 - Portion of Block 32, Main Pass Area, Revised, Plaquemines Parish, Louisiana

All of the lands now or formerly constituting the beds and bottoms of all water bodies of every nature and description the title of which vests in the State of Louisiana, together with all islands arising therein and other lands formed by accretion or by reliction, where allowed by law, excepting tax adjudicated lands, and not presently under mineral lease on January 14, 2004, situated in Plaquemines Parish, Louisiana, and more particularly described as follows: Beginning at the Northeast corner of Block 32, Main Pass Area, Revised, having Coordinates of X = 2,620,600.00 and Y = 307,580.00; thence South 1,053.57 feet along the East line of said Block 32 to a point, also being the Northeast corner of State Lease No. 14441 having Coordinates of X = 2,620,600.00 and Y = 306,526.43; thence along the boundary of said State Lease No. 14441 the following courses: West 2,170.57 feet, South 4,310.07 feet and East 2,170.57 feet to the Southeast corner of said State Lease No. 14441, also being a point on the East line of said Block 32 having Coordinates of X = 2,620,600.00 and Y = 302,216.36; thence South 2,131.47 feet along the East line of said Block 32 to a point, also being the Northeast corner of State Lease No. 17293 having Coordinates of X = 2,620,600.00 and Y = 300,084.89; thence along the boundary of said State Lease No. 17293 the following courses: South 63 degrees 15 minutes 14 seconds West 4,210.49 feet and South 910.00 feet to the Southwest corner of said State Lease No. 17293, also being a point on the North line of State Lease No. 1958, as amended having Coordinates of X = 2,616,840.00 and Y = 297,280.00; thence West 5,550.00 feet along the North line of said State Lease No. 1958 to a point, also being the Southeast corner of State Lease No. 17573 having Coordinates of X = 2,611,290.00 and Y = 297,280.00; thence North 3,670.00 feet along the East line of said State Lease No. 17573 to its Northeast corner having Coordinates of X = 2,611,290.00 and Y = 300,950.00; thence North 16 degrees 56 minutes 16 seconds West 2,299.76 feet to the Southeast corner of State Lease No. 17572 having Coordinates of X = 2,610,620.00 and Y = 303,150.00; thence along the boundary of said State Lease No. 17572 the following courses: North 09 degrees 21 minutes 18 seconds East 3,506.64 feet and North 970.00 feet to the Northeast corner of State Lease No. 17572, also being a point on the North line of said Block 32 having Coordinates of X = 2,611,190.00 and Y = 307,580.00; thence East 9,410.00 feet along the North line of said Block 32 to the point of beginning, containing approximately **1,876.03 acres**, all as more particularly outlined on a plat on file in the Office of Mineral Resources, Department of Natural Resources. All bearings, distances and coordinates are based on Louisiana Coordinate System of 1927, (North or South Zone), where applicable.

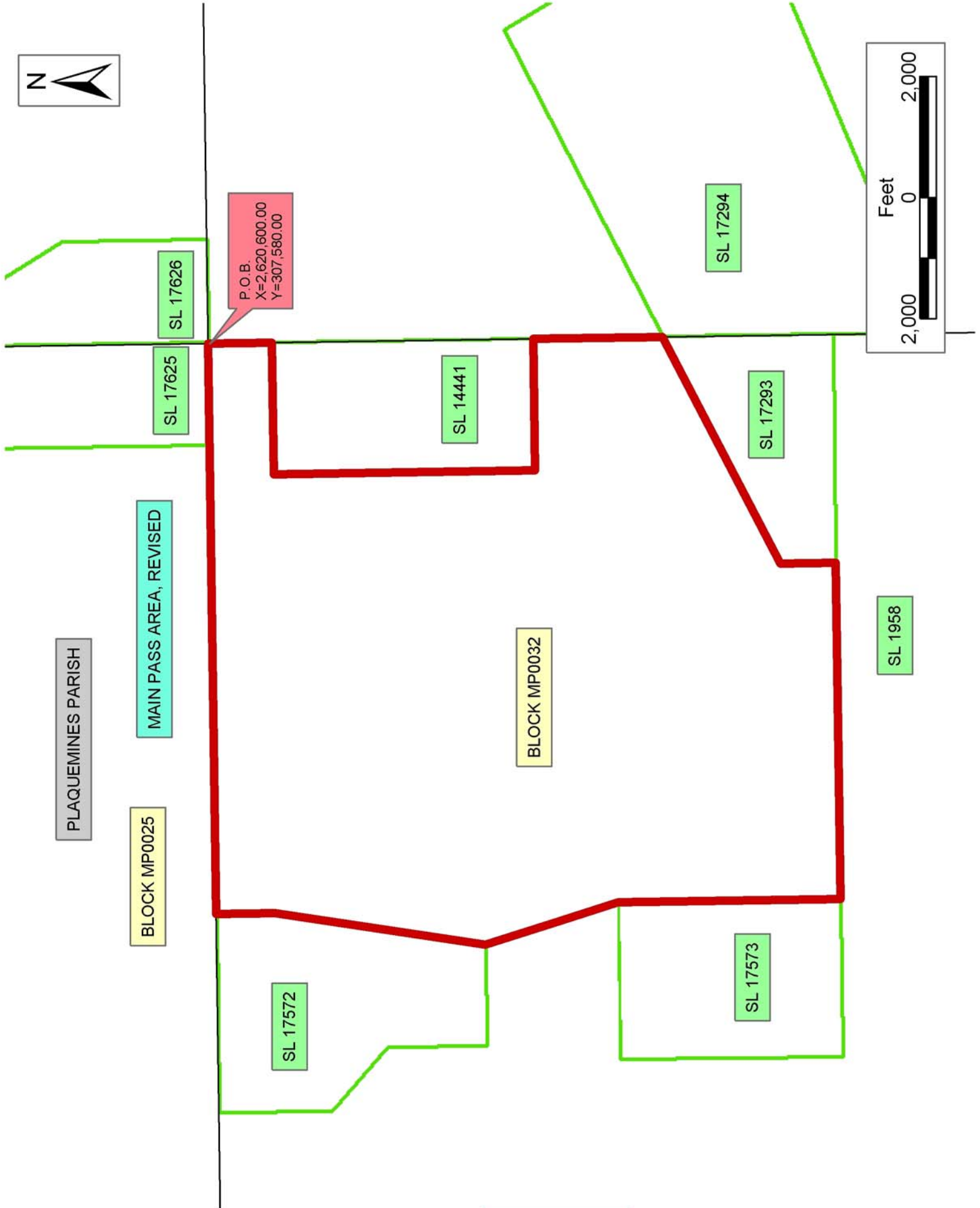
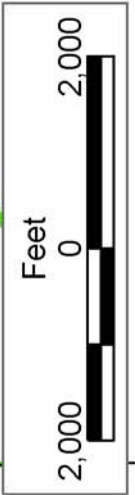
NOTE: The above description of the Tract nominated for lease has been provided and corrected, where required, exclusively by the nomination party. Any mineral lease selected from this Tract and awarded by the Louisiana State Mineral Board shall be without warranty of any kind, either express, implied, or statutory, including, but not limited to, the

implied warranties of merchantability and fitness for a particular purpose. Should the mineral lease awarded by the Louisiana State Mineral Board be subsequently modified, cancelled or abrogated due to the existence of conflicting leases, operating agreements, private claims or other future obligations or conditions which may affect all or any portion of the leased Tract, it shall not relieve the Lessee of the obligation to pay any bonus due thereon to the Louisiana State Mineral Board, nor shall the Louisiana State Mineral Board be obligated to refund any consideration paid by the Lessor prior to such modification, cancellation, or abrogation, including, but not limited to, bonuses, rentals and royalties.

NOTE: The State of Louisiana does hereby reserve, and this lease shall be subject to, the imprescriptible right of surface use in the nature of a servitude in favor of the Department of Natural Resources, including its Offices and Commissions, for the sole purpose of implementing, constructing, servicing and maintaining approved coastal zone management and/or restoration projects. Utilization of any and all rights derived under this lease by the mineral lessee, its agents, successors or assigns, shall not interfere with nor hinder the reasonable surface use by the Department of Natural Resources, its Offices or Commissions, as herein above reserved.

Applicant: Omni Energy, Inc.

| Bidder | Cash Payment | Price/ Acre | Rental | Oil | Gas | Other |
|--------|-----------------|----------------|--------|-----|-----|-------|
| | | | | | | |
| | | | | | | |
| | | | | | | |
| | | | | | | |



TRACT 35992 - Portion of Blocks 32, and 33, Main Pass Area, Revised, Plaquemines Parish, Louisiana

All of the lands now or formerly constituting the beds and bottoms of all water bodies of every nature and description the title of which vests in the State of Louisiana, together with all islands arising therein and other lands formed by accretion or by reliction, where allowed by law, excepting tax adjudicated lands, and not presently under mineral lease on January 14, 2004, situated in Plaquemines Parish, Louisiana, and more particularly described as follows: Beginning at the Northeast corner of Block 33, Main Pass Area, Revised, also being the Northwest corner of Block 32, Main Pass Area, Revised, having Coordinates of X = 2,605,850.00 and Y = 307,580.00; thence East 2,050.00 feet along the North line of said Block 32 to a point, also being the Northwest corner of State Lease No. 17572 having Coordinates of X = 2,607,900.00 and Y = 307,580.00; thence along the boundary of said State Lease No. 17572 the following courses: South 1,851.61 feet, South 47 degrees 54 minutes 39 seconds East 1,414.90 feet, South 1,630.00 feet and East 1,670.00 feet to the Southeast corner of said State Lease No. 17572 having Coordinates of X = 2,610,620.00 and Y = 303,150.00; thence South 16 degrees 56 minutes 16 seconds East 1,303.70 feet to a point having Coordinates of X = 2,610,999.81 and Y = 301,902.85; thence West 5,149.81 feet to a point on the West line of said Block 32, also being a point on the East line of said Block 33 having Coordinates of X = 2,605,850.00 and Y = 301,902.85; thence West approximately 6,642 feet to a point on the West line of said Block 33; thence Northwesterly approximately 7,536 feet to a point; thence Northwesterly approximately 409 feet to the Northwest corner of said Block 33 having a Coordinate of Y = 307,580.00; thence East 12,038.11 feet along the North line of said Block 33 to the point of beginning, containing approximately **1,643 acres**, all as more particularly outlined on a plat on file in the Office of Mineral Resources, Department of Natural Resources. All bearings, distances and coordinates are based on Louisiana Coordinate System of 1927, (North or South Zone), where applicable.

NOTE: The above description of the Tract nominated for lease has been provided and corrected, where required, exclusively by the nomination party. Any mineral lease selected from this Tract and awarded by the Louisiana State Mineral Board shall be without warranty of any kind, either express, implied, or statutory, including, but not limited to, the implied warranties of merchantability and fitness for a particular purpose. Should the mineral lease awarded by the Louisiana State Mineral Board be subsequently modified, cancelled or abrogated due to the existence of conflicting leases, operating agreements, private claims or other future obligations or conditions which may affect all or any portion of the leased Tract, it shall not relieve the Lessee of the obligation to pay any bonus due thereon to the Louisiana State Mineral Board, nor shall the Louisiana State Mineral Board be obligated to refund any consideration paid by the Lessor prior to such modification, cancellation, or abrogation, including, but not limited to, bonuses, rentals and royalties.

NOTE: The State of Louisiana does hereby reserve, and this lease shall be subject to, the imprescriptible right of surface use in the nature of a servitude in favor of the Department of Natural Resources, including its Offices and Commissions, for the sole purpose of implementing, constructing, servicing and maintaining approved coastal zone management and/or restoration projects. Utilization of any and all rights derived under this lease by the mineral lessee, its agents, successors or assigns, shall not interfere with nor hinder the reasonable surface use by the Department of Natural Resources, its Offices or Commissions, as herein above reserved.

Applicant: Omni Energy, Inc.

| Bidder | Cash Payment | Price/ Acre | Rental | Oil | Gas | Other |
|--------|-----------------|----------------|--------|-----|-----|-------|
| | | | | | | |
| | | | | | | |
| | | | | | | |
| | | | | | | |



MAIN PASS AREA, REVISED

BLOCK MP0025

P.O.B.
X=2,605,850.00
Y=307,580.00

BLOCK MP0024

SL 17047

SL 17572

PLAQUEMINES PARISH

BLOCK MP0033

SL 17573

BLOCK MP0032



TRACT 35993 - Portion of Blocks 32, and 33, Main Pass Area, Revised, Plaquemines Parish, Louisiana

All of the lands now or formerly constituting the beds and bottoms of all water bodies of every nature and description the title of which vests in the State of Louisiana, together with all islands arising therein and other lands formed by accretion or by reliction, where allowed by law, excepting tax adjudicated lands, and not presently under mineral lease on January 14, 2004, situated in Plaquemines Parish, Louisiana, and more particularly described as follows: Beginning at the Southeast corner of Block 33, Main Pass Area, Revised, having Coordinates of X = 2,605,850.00 and Y = 292,830.00; thence West 3,250.00 feet along the South line of said Block 33 to a point, also being the Southeast corner of State Lease No. 17051 having Coordinates of X = 2,602,600.00 and Y = 292,830.00; thence along the boundary of said State Lease No. 17051 the following courses: North 57 degrees 03 minutes 11 seconds West 4,063.52 feet, North 15 degrees 00 minutes 45 seconds West 2,277.74 feet and South 89 degrees 45 minutes 11 seconds West approximately 671 feet to the Northwest corner of said State Lease No. 17051, also being a point on the West line of said Block 33; thence Northeasterly approximately 4,838 feet to a point; thence East approximately 6,642 feet to a point on the East line of said Block 33, also being a point on the West line of Block 32, Main Pass Area, Revised, having Coordinates of X = 2,605,850.00 and Y = 301,902.85; thence East 5,149.81 feet to a point having Coordinates of X = 2,610,999.81 and Y = 301,902.85; thence South 16 degrees 56 minutes 16 seconds East 996.06 feet to the Northeast corner of State Lease No. 17573 having Coordinates of X = 2,611,290.00 and Y = 300,950.00; thence along the boundary of said State Lease No. 17573 the following courses: West 2,600.00 feet and South 3,670.00 feet to the Southwest corner of said State Lease No. 17573, also being a point on the North line of State Lease No. 1958, as amended having Coordinates of X = 2,608,690.00 and Y = 297,280.00; thence West 2,840.00 feet along the North line of said State Lease No. 1958 to its Northwest corner, and a point on the West line of said Block 32, also being a point on the East line of said Block 33 having Coordinates of X = 2,605,850.00 and Y = 297,280.00; thence South 4,450.00 feet along the East line of said Block 33 to the point of beginning, containing approximately **1,737 acres**, all as more particularly outlined on a plat on file in the Office of Mineral Resources, Department of Natural Resources. All bearings, distances and coordinates are based on Louisiana Coordinate System of 1927, (North or South Zone), where applicable.

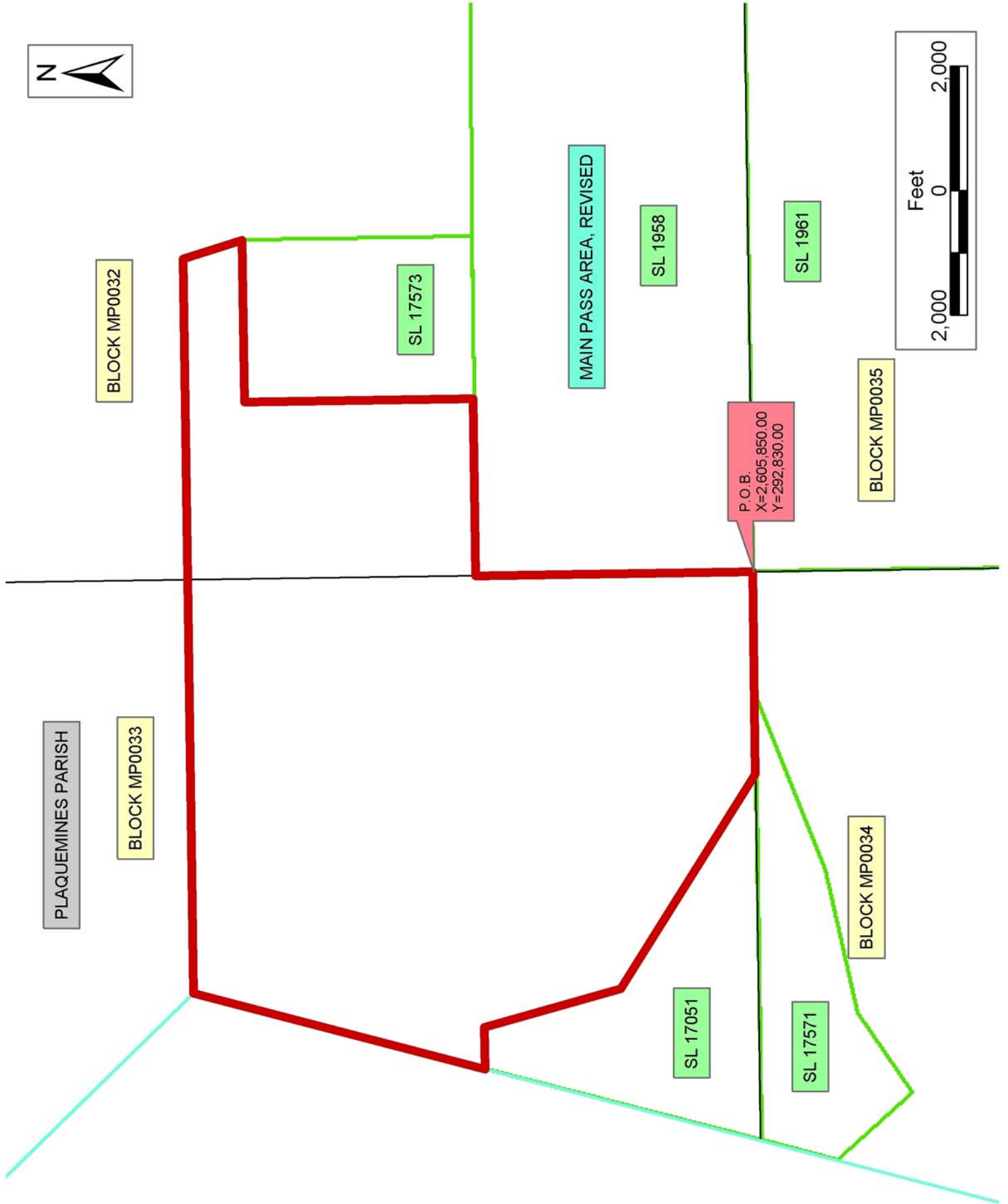
NOTE: The above description of the Tract nominated for lease has been provided and corrected, where required, exclusively by the nomination party. Any mineral lease selected from this Tract and awarded by the Louisiana State Mineral Board shall be without warranty of any kind, either express, implied, or statutory, including, but not limited to, the implied warranties of merchantability and fitness for a particular purpose. Should the mineral lease awarded by the Louisiana State Mineral Board be subsequently modified, cancelled or abrogated due to the existence of conflicting leases, operating agreements, private claims or

other future obligations or conditions which may affect all or any portion of the leased Tract, it shall not relieve the Lessee of the obligation to pay any bonus due thereon to the Louisiana State Mineral Board, nor shall the Louisiana State Mineral Board be obligated to refund any consideration paid by the Lessor prior to such modification, cancellation, or abrogation, including, but not limited to, bonuses, rentals and royalties.

NOTE: The State of Louisiana does hereby reserve, and this lease shall be subject to, the imprescriptible right of surface use in the nature of a servitude in favor of the Department of Natural Resources, including its Offices and Commissions, for the sole purpose of implementing, constructing, servicing and maintaining approved coastal zone management and/or restoration projects. Utilization of any and all rights derived under this lease by the mineral lessee, its agents, successors or assigns, shall not interfere with nor hinder the reasonable surface use by the Department of Natural Resources, its Offices or Commissions, as herein above reserved.

Applicant: Omni Energy, Inc.

| Bidder | Cash Payment | Price/ Acre | Rental | Oil | Gas | Other |
|--------|-----------------|----------------|--------|-----|-----|-------|
| | | | | | | |
| | | | | | | |
| | | | | | | |
| | | | | | | |



TRACT 35994 - Portion of Block 31, Main Pass Area, Revised, Plaquemines Parish, Louisiana

All of the lands now or formerly constituting the beds and bottoms of all water bodies of every nature and description the title of which vests in the State of Louisiana, together with all islands arising therein and other lands formed by accretion or by reliction, where allowed by law, excepting tax adjudicated lands, and not presently under mineral lease on January 14, 2004, situated in Plaquemines Parish, Louisiana, and more particularly described as follows: Beginning at the Southeast corner of Block 31, Main Pass Area, Revised having Coordinates of X = 2,635,350.00 and Y = 292,830.00; thence West 11,100.00 feet along the South line of said Block 31 to a point, also being the most Southerly Southeast corner of State Lease No. 2125 having Coordinates of X = 2,624,250.00 and Y = 292,830.00; thence along the boundary of said State Lease No. 2125 the following courses: North 52 degrees 54 minutes 26 seconds East 2,570.02 feet, North 10 degrees 46 minutes 25 seconds East 2,514.32 feet, South 83 degrees 19 minutes 25 seconds West 3,010.42 feet, South 55 degrees 44 minutes 20 seconds West 3,339.46 feet and North 63 degrees 26 minutes 07 seconds West 469.57 feet to the most Westerly Northwest corner of said State Lease No. 2125, also being a point on the West line of said Block 31 having Coordinates of X = 2,620,600.00 and Y = 294,830.00; thence North 865.00 feet along the West line of said Block 31 to a point, also being the Southwest corner of State Lease No. 17294 having Coordinates of X = 2,620,600.00 and Y = 295,695.00; thence along the boundary of said State Lease No. 17294 the following courses: North 68 degrees 01 minutes 53 seconds East 7,952.44 feet and North 30 degrees 00 minutes 01 seconds West 1,772.47 feet to a point on the Easterly line of said State Lease No. 17294 having Coordinates of X = 2,627,088.75 and Y = 300,205.00; thence East 4,560.95 feet to a point on the Westerly boundary line of State Lease No. 12002, as amended having Coordinates of X = 2,631,649.71 and Y = 300,205.00; thence along the boundary of said State Lease No. 12002 the following courses: South 50 degrees 08 minutes 29 seconds West 2,903.14 feet, South 1,514.40 feet and East 5,928.83 feet to the Southeast corner of said State Lease No. 12002, also being a point on the East line of said Block 31 having Coordinates of X = 2,635,350.00 and Y = 296,830.00; thence South 4,000.00 feet along the East line of said Block 31 to the point of beginning, containing approximately **1,200.74 acres**, all as more particularly outlined on a plat on file in the Office of Mineral Resources, Department of Natural Resources. All bearings, distances and coordinates are based on Louisiana Coordinate System of 1927, (North or South Zone), where applicable.

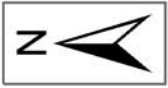
NOTE: The above description of the Tract nominated for lease has been provided and corrected, where required, exclusively by the nomination party. Any mineral lease selected from this Tract and awarded by the Louisiana State Mineral Board shall be without warranty of any kind, either express, implied, or statutory, including, but not limited to, the implied warranties of merchantability and fitness for a particular purpose. Should the mineral lease awarded by the Louisiana State Mineral

Board be subsequently modified, cancelled or abrogated due to the existence of conflicting leases, operating agreements, private claims or other future obligations or conditions which may affect all or any portion of the leased Tract, it shall not relieve the Lessee of the obligation to pay any bonus due thereon to the Louisiana State Mineral Board, nor shall the Louisiana State Mineral Board be obligated to refund any consideration paid by the Lessor prior to such modification, cancellation, or abrogation, including, but not limited to, bonuses, rentals and royalties.

NOTE: The State of Louisiana does hereby reserve, and this lease shall be subject to, the imprescriptible right of surface use in the nature of a servitude in favor of the Department of Natural Resources, including its Offices and Commissions, for the sole purpose of implementing, constructing, servicing and maintaining approved coastal zone management and/or restoration projects. Utilization of any and all rights derived under this lease by the mineral lessee, its agents, successors or assigns, shall not interfere with nor hinder the reasonable surface use by the Department of Natural Resources, its Offices or Commissions, as herein above reserved.

Applicant: Omni Energy, Inc.

| Bidder | Cash Payment | Price/ Acre | Rental | Oil | Gas | Other |
|--------|-----------------|----------------|--------|-----|-----|-------|
| | | | | | | |
| | | | | | | |
| | | | | | | |
| | | | | | | |

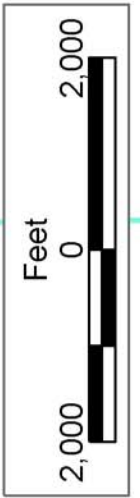


BRETON
SOUND
AREA

SL 17295

SL 17242

P.O.B.
X=2,635,350.00
Y=292,830.00



SL 12002

PLAQUEMINES PARISH

BLOCK MP0031

MAIN PASS AREA, REVISED

BLOCK MP0036

SL 17294

SL 2125

SL 1958

TRACT 35995 - Portion of Block 36, Main Pass Area, Revised, Plaquemines Parish, Louisiana

All of the lands now or formerly constituting the beds and bottoms of all water bodies of every nature and description the title of which vests in the State of Louisiana, together with all islands arising therein and other lands formed by accretion or by reliction, where allowed by law, excepting tax adjudicated lands, and not presently under mineral lease on January 14, 2004, situated in Plaquemines Parish, Louisiana, and more particularly described as follows: Beginning at a point on the East line of Block 36, Main Pass Area, Revised, having Coordinates of X = 2,635,350.00 and Y = 285,455.00; thence West 14,750.00 feet to a point on the West line of said Block 36 having Coordinates of X = 2,620,600.00 and Y = 285,455.00; thence North 7,375.00 feet along the West line of said Block 36 to its Northwest corner having Coordinates of X = 2,620,600.00 and Y = 292,830.00; thence East 14,750.00 feet along the North line of said Block 36 to its Northeast corner having Coordinates of X = 2,635,350.00 and Y = 292,830.00; thence South 7,375.00 feet along the East line of said Block 36 to the point of beginning, containing approximately **2,497.27 acres**, all as more particularly outlined on a plat on file in the Office of Mineral Resources, Department of Natural Resources. All bearings, distances and coordinates are based on Louisiana Coordinate System of 1927, (North or South Zone), where applicable.

NOTE: The above description of the Tract nominated for lease has been provided and corrected, where required, exclusively by the nomination party. Any mineral lease selected from this Tract and awarded by the Louisiana State Mineral Board shall be without warranty of any kind, either express, implied, or statutory, including, but not limited to, the implied warranties of merchantability and fitness for a particular purpose. Should the mineral lease awarded by the Louisiana State Mineral Board be subsequently modified, cancelled or abrogated due to the existence of conflicting leases, operating agreements, private claims or other future obligations or conditions which may affect all or any portion of the leased Tract, it shall not relieve the Lessee of the obligation to pay any bonus due thereon to the Louisiana State Mineral Board, nor shall the Louisiana State Mineral Board be obligated to refund any consideration paid by the Lessor prior to such modification, cancellation, or abrogation, including, but not limited to, bonuses, rentals and royalties.

NOTE: The State of Louisiana does hereby reserve, and this lease shall be subject to, the imprescriptible right of surface use in the nature of a servitude in favor of the Department of Natural Resources, including its Offices and Commissions, for the sole purpose of implementing, constructing, servicing and maintaining approved coastal zone management and/or restoration projects. Utilization of any and all rights derived under this lease by the mineral lessee, its agents, successors or assigns, shall not interfere with nor hinder the reasonable surface use by the Department of Natural Resources, its Offices or Commissions, as herein above reserved.

Applicant: Omni Energy, Inc.

| Bidder | Cash Payment | Price/ Acre | Rental | Oil | Gas | Other |
|--------|-----------------|----------------|--------|-----|-----|-------|
| | | | | | | |
| | | | | | | |
| | | | | | | |
| | | | | | | |

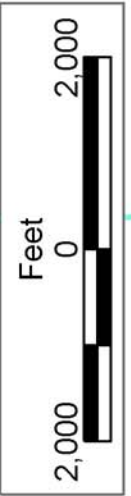


SL 17295

SL 17242

BRETON
SOUND
AREA

P.O.B.
X=2,635,350.00
Y=285,455.00



BLOCK MP0031

BLOCK MP0036

MAIN PASS AREA, REVISED

PLAQUEMINES PARISH

SL 2125

SL 1958

SL 1961

TRACT 35996 - St. Mary Parish, Louisiana

All of the lands now or formerly constituting the beds and bottoms of all water bodies of every nature and description the title of which vests in the State of Louisiana, together with all islands arising therein and other lands formed by accretion or by reliction, where allowed by law, excepting tax adjudicated lands, and not presently under mineral lease on January 14, 2004, situated in St. Mary Parish, Louisiana, and more particularly described as follows: Beginning at a point having Coordinates of X = 2,005,430.00 and Y = 301,000.00; thence East 11,250.89 feet to a point having Coordinates of X = 2,016,680.89 and Y = 301,000.00; thence South approximately 3,250 feet to an intersection point on the Northern boundary of the Atchafalaya Delta Wildlife Management Area having a Coordinate of X = 2,016,680.89; thence along the said Northern boundary of the Atchafalaya Delta Wildlife Management Area, Southwesterly Northwesterly, Northeasterly and Northwesterly to a point having a Coordinate of X = 2,005,430.00; thence North approximately 2,215 feet to the point of beginning, **LESS AND EXCEPT** all that portion of the Atchafalaya Delta Wildlife Management Area that may lie within the above described tract, containing approximately **42 acres**, all as more particularly outlined on a plat on file in the Office of Mineral Resources, Department of Natural Resources. All bearings, distances and coordinates are based on Louisiana Coordinate System of 1927, (North or South Zone), where applicable.

NOTE: The above description of the Tract nominated for lease has been provided and corrected, where required, exclusively by the nomination party. Any mineral lease selected from this Tract and awarded by the Louisiana State Mineral Board shall be without warranty of any kind, either express, implied, or statutory, including, but not limited to, the implied warranties of merchantability and fitness for a particular purpose. Should the mineral lease awarded by the Louisiana State Mineral Board be subsequently modified, cancelled or abrogated due to the existence of conflicting leases, operating agreements, private claims or other future obligations or conditions which may affect all or any portion of the leased Tract, it shall not relieve the Lessee of the obligation to pay any bonus due thereon to the Louisiana State Mineral Board, nor shall the Louisiana State Mineral Board be obligated to refund any consideration paid by the Lessor prior to such modification, cancellation, or abrogation, including, but not limited to, bonuses, rentals and royalties.

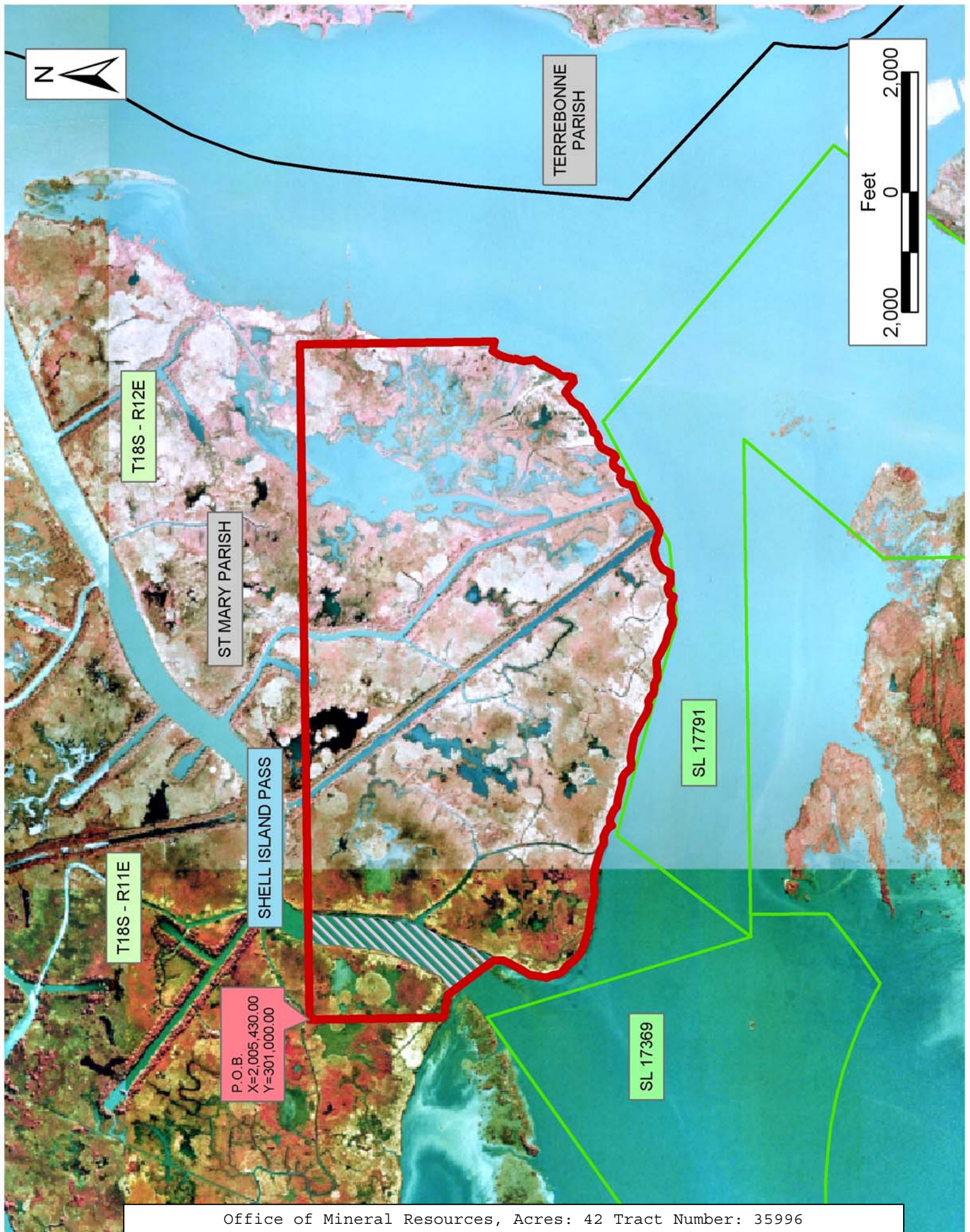
NOTE: The State of Louisiana does hereby reserve, and this lease shall be subject to, the imprescriptible right of surface use in the nature of a servitude in favor of the Department of Natural Resources, including its Offices and Commissions, for the sole purpose of implementing, constructing, servicing and maintaining approved coastal zone management and/or restoration projects. Utilization of any and all rights derived under this lease by the mineral lessee, its agents, successors or assigns, shall not interfere with nor hinder the reasonable surface use by the

Department of Natural Resources, its Offices or Commissions, as herein above reserved.

NOTE: The Department of Wildlife and Fisheries has designated certain areas in the coastal waters of the State of Louisiana as Oyster Seed Bed Areas. The exact location of those Seed Bed Areas must be obtained from the Department of Wildlife and Fisheries and any work done under a mineral lease from the State of Louisiana may necessarily be conducted in conformity with the rules and regulations promulgated by the said Department of Wildlife and Fisheries for Oyster Seed Bed Areas.

Applicant: Harold J. Anderson, Inc.

| Bidder | Cash Payment | Price/ Acre | Rental | Oil | Gas | Other |
|--------|-----------------|----------------|--------|-----|-----|-------|
| | | | | | | |
| | | | | | | |
| | | | | | | |
| | | | | | | |



TRACT 35997 - Portion of Block 36, Main Pass Area, Revised, Plaquemines Parish, Louisiana

All of the lands now or formerly constituting the beds and bottoms of all water bodies of every nature and description the title of which vests in the State of Louisiana, together with all islands arising therein and other lands formed by accretion or by reliction, where allowed by law, excepting tax adjudicated lands, and not presently under mineral lease on January 14, 2004, situated in Plaquemines Parish, Louisiana, and more particularly described as follows: Beginning at a point on the East line of Block 36, Main Pass Area, Revised, having Coordinates of X = 2,635,350.00 and Y = 285,455.00; thence South 7,375.00 feet along the East line of said Block 36 to its Southeast corner having Coordinates of X = 2,635,350.00 and Y = 278,080.00; thence West 14,750.00 feet along the South line of said Block 36 to its Southwest corner having Coordinates of X = 2,620,600.00 and Y = 278,080.00; thence North 7,375.00 feet along the West line of said Block 36 to a point having Coordinates of X = 2,620,600.00 and Y = 285,455.00; thence East 14,750.00 feet to the point of beginning, containing approximately **2,497.27 acres**, all as more particularly outlined on a plat on file in the Office of Mineral Resources, Department of Natural Resources. All bearings, distances and coordinates are based on Louisiana Coordinate System of 1927, (North or South Zone), where applicable.

NOTE: The above description of the Tract nominated for lease has been provided and corrected, where required, exclusively by the nomination party. Any mineral lease selected from this Tract and awarded by the Louisiana State Mineral Board shall be without warranty of any kind, either express, implied, or statutory, including, but not limited to, the implied warranties of merchantability and fitness for a particular purpose. Should the mineral lease awarded by the Louisiana State Mineral Board be subsequently modified, cancelled or abrogated due to the existence of conflicting leases, operating agreements, private claims or other future obligations or conditions which may affect all or any portion of the leased Tract, it shall not relieve the Lessee of the obligation to pay any bonus due thereon to the Louisiana State Mineral Board, nor shall the Louisiana State Mineral Board be obligated to refund any consideration paid by the Lessor prior to such modification, cancellation, or abrogation, including, but not limited to, bonuses, rentals and royalties.

NOTE: The State of Louisiana does hereby reserve, and this lease shall be subject to, the imprescriptible right of surface use in the nature of a servitude in favor of the Department of Natural Resources, including its Offices and Commissions, for the sole purpose of implementing, constructing, servicing and maintaining approved coastal zone management and/or restoration projects. Utilization of any and all rights derived under this lease by the mineral lessee, its agents, successors or assigns, shall not interfere with nor hinder the reasonable surface use by the Department of Natural Resources, its Offices or Commissions, as herein above reserved.

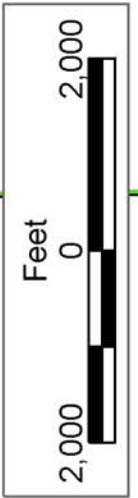
Applicant: Omni Energy, Inc.

| Bidder | Cash Payment | Price/ Acre | Rental | Oil | Gas | Other |
|--------|-----------------|----------------|--------|-----|-----|-------|
| | | | | | | |
| | | | | | | |
| | | | | | | |
| | | | | | | |



BRETON
SOUND
AREA

P.O.B.
X=2,635,350.00
Y=285,455.00



MAIN PASS AREA, REVISED

BLOCK MP0036

PLAQUEMINES PARISH

SL 16770

BLOCK MP0049

SL 1961

TRACT 35998 - Portion of Block 35, Main Pass Area, Revised, Plaquemines Parish, Louisiana

All of the lands now or formerly constituting the beds and bottoms of all water bodies of every nature and description the title of which vests in the State of Louisiana, together with all islands arising therein and other lands formed by accretion or by reliction, where allowed by law, excepting tax adjudicated lands, and not presently under mineral lease on January 14, 2004, situated in Plaquemines Parish, Louisiana, and more particularly described as follows: Beginning at a point on the West line of Block 35, Main Pass Area, Revised, also being the Southwest corner of State Lease No. 1961, as amended having Coordinates of X = 2,605,850.00 and Y = 285,445.80; thence East 14,750.00 feet along the South line of said State Lease No. 1961 to its Southeast corner, also being a point on the East line of said Block 35 having Coordinates of X = 2,620,600.00 and Y = 285,445.80; thence South 7,365.80 feet along the East line of said Block 35 to its Southeast corner having Coordinates of X = 2,620,600.00 and Y = 278,080.00; thence West 14,750.00 feet along the South line of said Block 35 to its Southwest corner having Coordinates of X = 2,605,850.00 and Y = 278,080.00; thence North 7,365.80 feet along the West line of said Block 35 to the point of beginning, containing approximately **2,494.16 acres**, all as more particularly outlined on a plat on file in the Office of Mineral Resources, Department of Natural Resources. All bearings, distances and coordinates are based on Louisiana Coordinate System of 1927, (North or South Zone), where applicable.

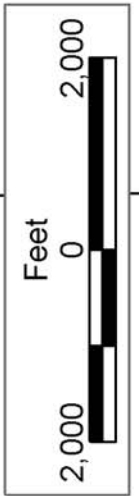
NOTE: The above description of the Tract nominated for lease has been provided and corrected, where required, exclusively by the nomination party. Any mineral lease selected from this Tract and awarded by the Louisiana State Mineral Board shall be without warranty of any kind, either express, implied, or statutory, including, but not limited to, the implied warranties of merchantability and fitness for a particular purpose. Should the mineral lease awarded by the Louisiana State Mineral Board be subsequently modified, cancelled or abrogated due to the existence of conflicting leases, operating agreements, private claims or other future obligations or conditions which may affect all or any portion of the leased Tract, it shall not relieve the Lessee of the obligation to pay any bonus due thereon to the Louisiana State Mineral Board, nor shall the Louisiana State Mineral Board be obligated to refund any consideration paid by the Lessor prior to such modification, cancellation, or abrogation, including, but not limited to, bonuses, rentals and royalties.

NOTE: The State of Louisiana does hereby reserve, and this lease shall be subject to, the imprescriptible right of surface use in the nature of a servitude in favor of the Department of Natural Resources, including its Offices and Commissions, for the sole purpose of implementing, constructing, servicing and maintaining approved coastal zone management and/or restoration projects. Utilization of any and all rights derived under this lease by the mineral lessee, its agents, successors or assigns, shall not interfere with nor hinder the reasonable surface use by the

Department of Natural Resources, its Offices or Commissions, as herein above reserved.

Applicant: Omni Energy, Inc.

| Bidder | Cash Payment | Price/ Acre | Rental | Oil | Gas | Other |
|--------|-----------------|----------------|--------|-----|-----|-------|
| | | | | | | |
| | | | | | | |
| | | | | | | |
| | | | | | | |



PLAQUEMINES PARISH

MAIN PASS AREA, REVISED

BLOCK MP0035

BLOCK MP0050

SL 1961

P.O.B.
X=2,605,850.00
Y=285,445.80

TRACT 35999 - Plaquemines Parish, Louisiana

All of the lands now or formerly constituting the beds and bottoms of all water bodies of every nature and description the title of which vests in the State of Louisiana, together with all islands arising therein and other lands formed by accretion or by reliction, where allowed by law, excepting tax adjudicated lands, and not presently under mineral lease on January 14, 2004, situated in Plaquemines Parish, Louisiana, and more particularly described as follows: Beginning at a point having Coordinates of X = 2,464,446.00 and Y = 271,200.00; thence West 7,646.00 feet to a point having Coordinates of X = 2,456,800.00 and Y = 271,200.00; thence North 1,800.00 feet to a point having Coordinates of X = 2,456,800.00 and Y = 273,000.00; thence West 3,500.00 feet to a point having Coordinates of X = 2,453,300.00 and Y = 273,000.00; thence South 1,800.00 feet to a point having Coordinates of X = 2,453,300.00 and Y = 271,200.00; thence West 5,800.00 feet to a point having Coordinates of X = 2,447,500.00 and Y = 271,200.00; thence North 7,450.00 feet to a point having Coordinates of X = 2,447,500.00 and Y = 278,650.00; thence East 11,378.00 to the most Northern Northwest corner of State Lease No. 17377 having Coordinates of X = 2,458,878.00 and Y = 278,650.00; thence along the boundaries of said State Lease 17377 the following: South 28 degrees 23 minutes 35 seconds West 1,345.90 feet, South 62 degrees 41 minutes 40 seconds East 3,195.74 feet and East 3,368.35 feet to a point on its South line having Coordinates of X = 2,464,446.00 and Y = 276,000.00; thence South 4,800.00 feet to the point of beginning, containing approximately **2,432.43 acres**, all as more particularly outlined on a plat on file in the Office of Mineral Resources, Department of Natural Resources. All bearings, distances and coordinates are based on Louisiana Coordinate System of 1927, (North or South Zone), where applicable.

NOTE: The above description of the Tract nominated for lease has been provided and corrected, where required, exclusively by the nomination party. Any mineral lease selected from this Tract and awarded by the Louisiana State Mineral Board shall be without warranty of any kind, either express, implied, or statutory, including, but not limited to, the implied warranties of merchantability and fitness for a particular purpose. Should the mineral lease awarded by the Louisiana State Mineral Board be subsequently modified, cancelled or abrogated due to the existence of conflicting leases, operating agreements, private claims or other future obligations or conditions which may affect all or any portion of the leased Tract, it shall not relieve the Lessee of the obligation to pay any bonus due thereon to the Louisiana State Mineral Board, nor shall the Louisiana State Mineral Board be obligated to refund any consideration paid by the Lessor prior to such modification, cancellation, or abrogation, including, but not limited to, bonuses, rentals and royalties.

NOTE: The State of Louisiana does hereby reserve, and this lease shall be subject to, the imprescriptible right of surface use in the nature of a servitude in favor of the Department of Natural Resources, including its Offices and Commissions, for the sole purpose of implementing,

constructing, servicing and maintaining approved coastal zone management and/or restoration projects. Utilization of any and all rights derived under this lease by the mineral lessee, its agents, successors or assigns, shall not interfere with nor hinder the reasonable surface use by the Department of Natural Resources, its Offices or Commissions, as herein above reserved.

NOTE: The Department of Wildlife and Fisheries has designated certain areas in the coastal waters of the State of Louisiana as Oyster Seed Bed Areas. The exact location of those Seed Bed Areas must be obtained from the Department of Wildlife and Fisheries and any work done under a mineral lease from the State of Louisiana may necessarily be conducted in conformity with the rules and regulations promulgated by the said Department of Wildlife and Fisheries for Oyster Seed Bed Areas.

Applicant: Barker Land Services

| Bidder | Cash Payment | Price/ Acre | Rental | Oil | Gas | Other |
|--------|-----------------|----------------|--------|-----|-----|-------|
| | | | | | | |
| | | | | | | |
| | | | | | | |
| | | | | | | |



T19S - R25E

BARATARIA BAY

SL 17377

P.O.B.
X=2,464,446.00
Y=271,200.00

PLAQUEMINES PARISH

JEFFERSON
PARISH

