

TRACT 36016 - St. Mary Parish, Louisiana

A portion of all lands located above the mean high water mark, together with lands now or formerly constituting the beds and bottoms of any water body of whatever description or nature belonging to the State of Louisiana which is now located within the boundaries of the Atchafalaya Delta Wildlife Management Area and not presently under mineral lease by the State of Louisiana on January 14, 2004, and more particularly located as follows: Beginning at the most Westerly Southwest corner of State Lease No. 17791, also being a corner on the East boundary of State Lease No. 17369 having Coordinates of X = 2,006,706.61 and Y = 293,628.58; Thence North 16 degrees 08 minutes 23 seconds West 4,592.42 feet along the said East boundary of State Lease No. 17369 to its Northeast corner having Coordinates of X = 2,005,430.00 and Y = 298,040.00; Thence North approximately 745 feet to an intersection point on the Northern boundary of the Atchafalaya Delta Wildlife Management Area having a Coordinate of X = 2,005,430.00; Thence along the said Northern boundary of the Atchafalaya Delta Wildlife Management Area, Southeasterly, Southwesterly, Southeasterly and Northeasterly to an intersection point with a line that bears North 49 degrees 20 minutes 41 seconds West from the Northeast corner of said State Lease No. 17791 having Coordinates of X = 2,015,325.29 and Y = 295,970.73; Thence South 49 degrees 20 minutes 41 seconds East approximately 237 feet to the Northeast corner of said State Lease No. 17791 having Coordinates of X = 2,015,325.29 and Y = 295,970.73; Thence along the Northern boundaries of said State Lease No. 17791 the following courses: South 62 degrees 17 minutes 57 seconds West 2,319.40 feet to a point having Coordinates of X = 2,013,271.73 and Y = 294,892.55; South 85 degrees 07 minutes 21 seconds West 1,278.97 feet to a point having Coordinates of X = 2,011,997.39 and Y = 294,783.80; North 73 degrees 26 minutes 25 seconds West 3,721.02 feet to its Northwest corner having Coordinates of X = 2,008,430.71 and Y = 295,844.35; Thence South 37 degrees 53 minutes 12 seconds West 2,807.52 feet along the most Westerly West boundary of said State Lease No. 17791 to the point of beginning, containing approximately **136 acres**, all as more particularly outlined on a plat on file in the Office of Mineral Resources, Department of Natural Resources. All bearings, distances and coordinates are based on Louisiana Coordinate System of 1927, (South Zone).

NOTE: The above description of the Tract nominated for lease has been provided and corrected, where required, exclusively by the nomination party. Any mineral lease selected from this Tract and awarded by the Louisiana State Mineral Board shall be without warranty of any kind, either express, implied, or statutory, including, but not limited to, the implied warranties of merchantability and fitness for a particular purpose. Should the mineral lease awarded by the Louisiana State Mineral Board be subsequently modified, cancelled or abrogated due to the existence of conflicting leases, operating agreements, private claims or other future obligations or conditions which may affect all or any portion of the leased Tract, it shall not relieve the Lessee of the obligation to pay any bonus due thereon to the Louisiana State Mineral Board, nor shall

the Louisiana State Mineral Board be obligated to refund any consideration paid by the Lessor prior to such modification, cancellation, or abrogation, including, but not limited to, bonuses, rentals and royalties.

NOTE: The mineral lease is located in the Atchafalaya Delta WMA under the jurisdiction of the Louisiana Department of Wildlife and Fisheries which has promulgated rules and regulations for the protection of game and wildlife on the aforesaid Tract and, therefore, shall be subject to said rules and regulations, a copy of which shall be attached to the mineral lease. In addition to the specific rules and regulations applicable, the following shall apply regarding operations under this mineral lease:

1. No activities will be allowed without written authorization of the Louisiana Department of Wildlife and Fisheries.
2. Proposed projects will be evaluated on a case by case basis. Modifications to proposed project features including, but not limited to, access routes, spoil placement, well sites, flow lines and appurtenant structures may be required by the Department of Wildlife and Fisheries.
3. Compliance with the Atchafalaya Delta WMA regulations will be required unless otherwise specified by the Department of Wildlife and Fisheries.
4. Compensatory mitigation will be required to offset avoidable wetland impacts.
5. Removal of all structures, facilities and equipment will be required within 120 days of abandonment unless otherwise agreed to in writing by the Department of Wildlife and Fisheries.
6. No activities will be allowed during the hunting season unless authorized by the Department.
7. Prior to submitting applications for wetland permits to Federal and State permitting agencies the lease holder shall coordinate project details with the Department of Wildlife and Fisheries. Contact person for the Department will be Mike Windham at (504) 568-5886.

NOTE: The Department will require a minimum bonus of \$350.00 per acre and a minimum royalty of 25%.

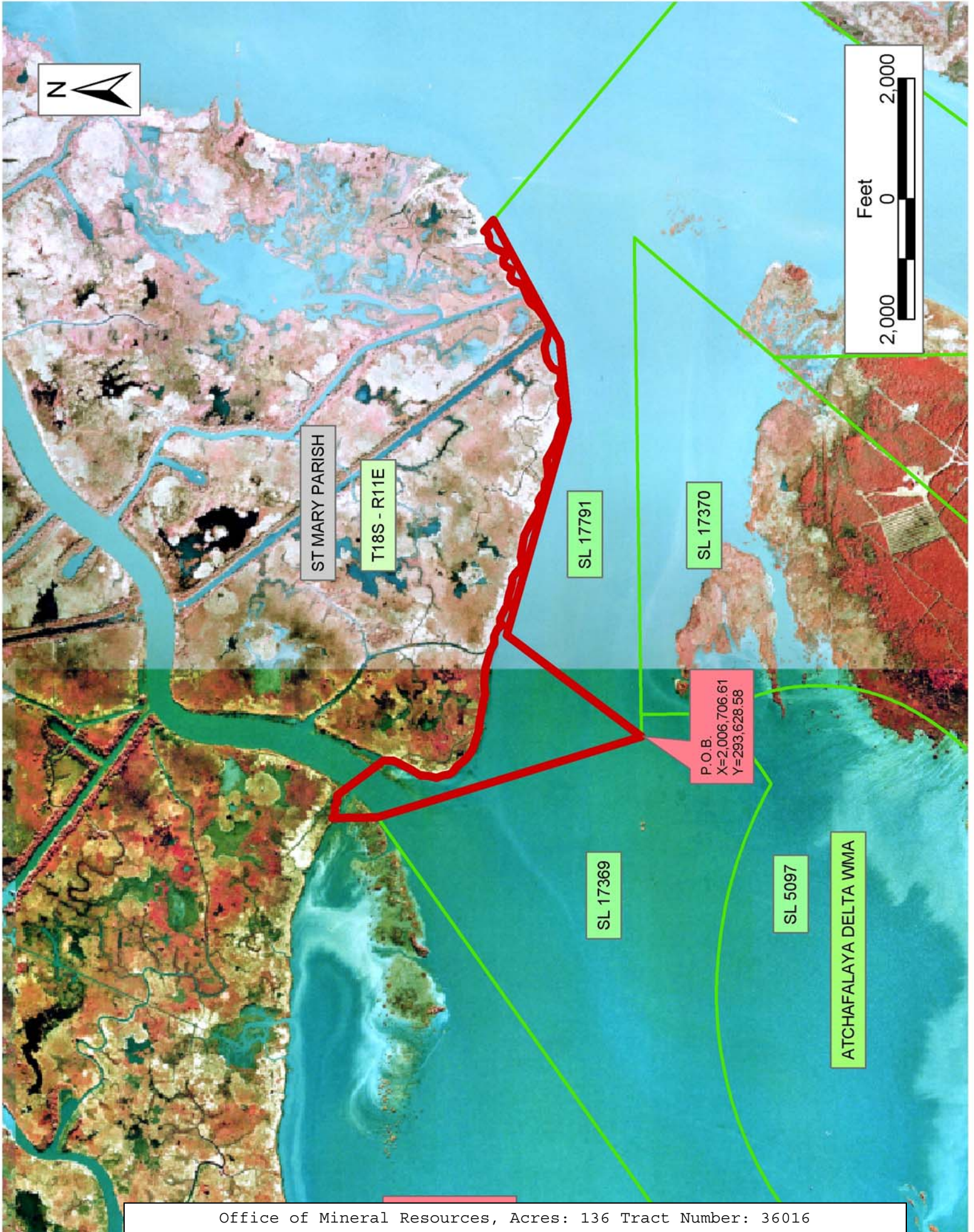
NOTE: The State of Louisiana does hereby reserve, and this lease shall be subject to, the imprescriptible right of surface use in the nature of a servitude in favor of the Department of Natural Resources, including its Offices and Commissions, for the sole purpose of implementing, constructing, servicing and maintaining approved coastal zone management and/or restoration projects. Utilization of any and all rights derived under this lease by the mineral lessee, its agents, successors or assigns, shall not interfere with nor hinder the reasonable surface use by the Department of Natural Resources, its Offices or Commissions, as herein above reserved.

NOTE: The Department of Wildlife and Fisheries has designated certain areas in the coastal waters of the State of Louisiana as Oyster Seed Bed Areas. The exact location of those Seed Bed Areas must be obtained from the Department of Wildlife and Fisheries and any work done under a mineral

lease from the State of Louisiana may necessarily be conducted in conformity with the rules and regulations promulgated by the said Department of Wildlife and Fisheries for Oyster Seed Bed Areas.

Applicant: Harold J. Anderson, Inc.

Bidder	Cash Payment	Price/Acre	Rental	Oil	Gas	Other



TRACT 36017 - St. Mary and Terrebonne Parishes, Louisiana

A portion of all lands located above the mean high water mark, together with lands now or formerly constituting the beds and bottoms of any water body of whatever description or nature belonging to the State of Louisiana which is now located within the boundaries of the Atchafalaya Delta Wildlife Management Area and not presently under mineral lease by the State of Louisiana on January 14, 2004, and more particularly located as follows: Beginning at the Southeast corner of State Lease No. 17791 having Coordinates of X = 2,014,981.00 and Y = 285,734.96; thence along the Eastern boundaries of said State Lease No. 17791 the following courses: North 37 degrees 44 minutes 09 seconds East 8,000.00 feet to a corner having Coordinates of X = 2,019,877.16 and Y = 292,061.70; North 49 degrees 20 minutes 41 seconds West 6,000.00 feet to its most Northern Northeast corner having Coordinates of X = 2,015,325.29 and Y = 295,970.73; thence North 49 degrees 20 minutes 41 seconds West approximately 237 feet to an intersection point on the North boundary of the Atchafalaya Delta Wildlife Management Area; thence along the said Northern boundary of the Atchafalaya Delta Wildlife Management Area, Northeasterly, Southeasterly, Northeasterly and Southeasterly to an intersection point with a line that bears North from a point having Coordinates of X = 2,016,680.89 and Y = 297,691.52; thence South approximately 60 feet to a point having Coordinates of X = 2,016,680.89 and Y = 297,691.52; thence South 53 degrees 53 minutes 35 seconds East 6,129.53 feet to a point having Coordinates of X = 2,021,633.05 and Y = 294,079.42; thence South 05 degrees 09 minutes 11 seconds East 2,003.74 feet to a point having Coordinates of X = 2,021,813.02 and Y = 292,083.78; thence South 23 degrees 35 minutes 03 seconds East 1,056.24 feet to a point having Coordinates of X = 2,022,235.62 and Y = 291,115.76; thence South 44 degrees 30 minutes 48 seconds East 1,598.86 feet to a point having Coordinates of X = 2,023,356.54 and Y = 289,975.63; thence South 15 degrees 32 minutes 20 seconds East 1,521.49 feet to a point having Coordinates of X = 2,023,764.14 and Y = 288,509.75; thence South 07 degrees 57 minutes 56 seconds East 1,911.88 feet to a point having Coordinates of X = 2,024,029.08 and Y = 286,616.32; thence South 881.36 feet to a point having Coordinates of X = 2,024,029.08 and Y = 285,734.96; thence West 9,048.08 feet to the point of beginning, containing approximately **1,244 acres**, all as more particularly outlined on a plat on file in the Office of Mineral Resources, Department of Natural Resources. All bearings, distances and coordinates are based on Louisiana Coordinate System of 1927, (South Zone).

NOTE: The above description of the Tract nominated for lease has been provided and corrected, where required, exclusively by the nomination party. Any mineral lease selected from this Tract and awarded by the Louisiana State Mineral Board shall be without warranty of any kind, either express, implied, or statutory, including, but not limited to, the implied warranties of merchantability and fitness for a particular purpose. Should the mineral lease awarded by the Louisiana State Mineral Board be subsequently modified, cancelled or abrogated due to the

existence of conflicting leases, operating agreements, private claims or other future obligations or conditions which may affect all or any portion of the leased Tract, it shall not relieve the Lessee of the obligation to pay any bonus due thereon to the Louisiana State Mineral Board, nor shall the Louisiana State Mineral Board be obligated to refund any consideration paid by the Lessor prior to such modification, cancellation, or abrogation, including, but not limited to, bonuses, rentals and royalties.

NOTE: The mineral lease is located in the Atchafalaya Delta WMA under the jurisdiction of the Louisiana Department of Wildlife and Fisheries which has promulgated rules and regulations for the protection of game and wildlife on the aforesaid Tract and, therefore, shall be subject to said rules and regulations, a copy of which shall be attached to the mineral lease. In addition to the specific rules and regulations applicable, the following shall apply regarding operations under this mineral lease:

1. No activities will be allowed without written authorization of the Louisiana Department of Wildlife and Fisheries.
2. Proposed projects will be evaluated on a case by case basis. Modifications to proposed project features including, but not limited to, access routes, spoil placement, well sites, flow lines and appurtenant structures may be required by the Department of Wildlife and Fisheries.
3. Compliance with the Atchafalaya Delta WMA regulations will be required unless otherwise specified by the Department of Wildlife and Fisheries.
4. Compensatory mitigation will be required to offset unavoidable wetland impacts.
5. Removal of all structures, facilities and equipment will be required within 120 days of abandonment unless otherwise agreed to in writing by the Department of Wildlife and Fisheries.
6. No activities will be allowed during the hunting season unless authorized by the Department.
7. Prior to submitting applications for wetland permits to Federal and State permitting agencies the lease holder shall coordinate project details with the Department of Wildlife and Fisheries. Contact person for the Department will be Mike Windham at (504) 568-5886.

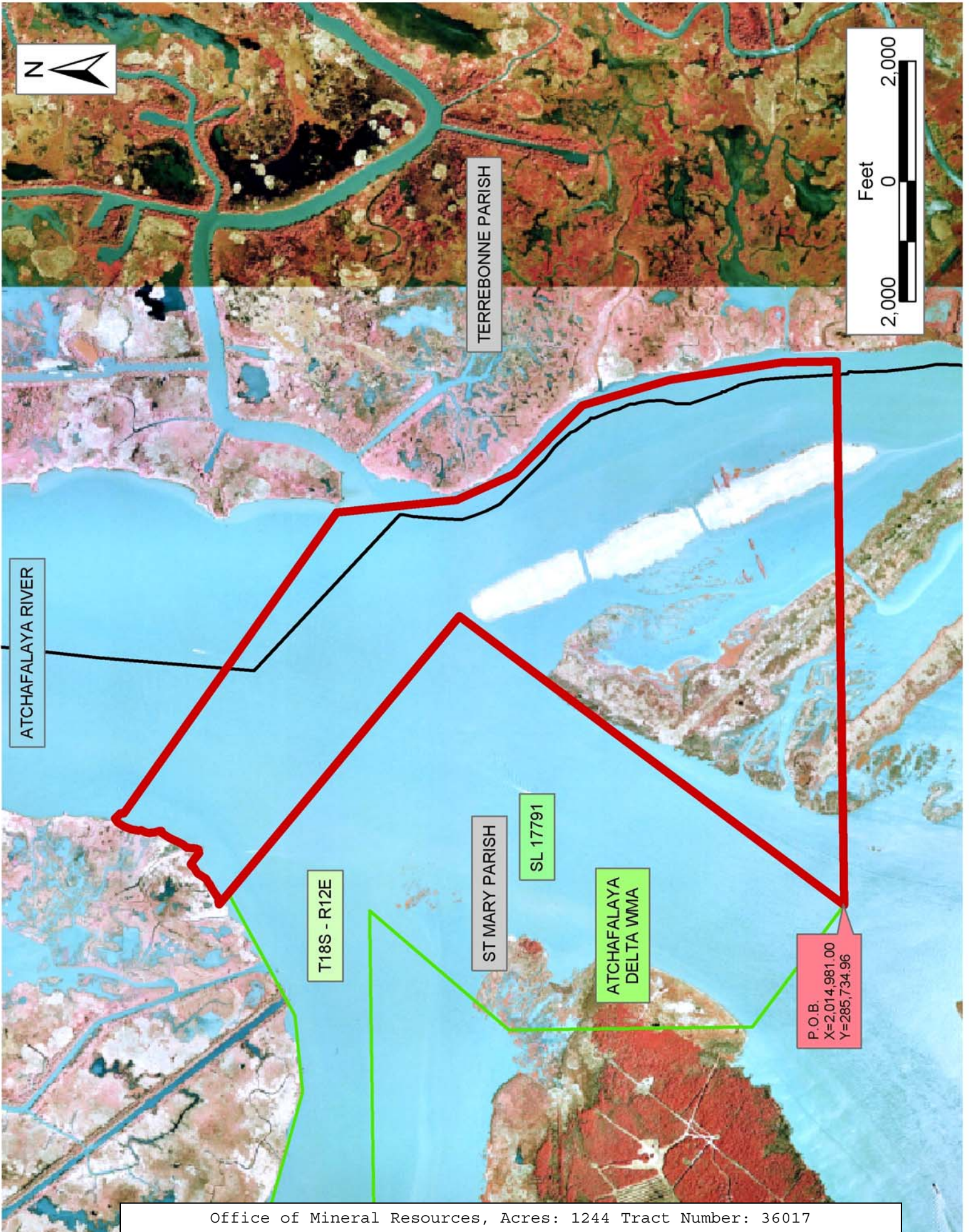
NOTE: The Department will require a minimum bonus of \$350.00 per acre and a minimum royalty of 25%.

NOTE: The State of Louisiana does hereby reserve, and this lease shall be subject to, the imprescriptible right of surface use in the nature of a servitude in favor of the Department of Natural Resources, including its Offices and Commissions, for the sole purpose of implementing, constructing, servicing and maintaining approved coastal zone management and/or restoration projects. Utilization of any and all rights derived under this lease by the mineral lessee, its agents, successors or assigns, shall not interfere with nor hinder the reasonable surface use by the Department of Natural Resources, its Offices or Commissions, as herein above reserved.

NOTE: The Department of Wildlife and Fisheries has designated certain areas in the coastal waters of the State of Louisiana as Oyster Seed Bed Areas. The exact location of those Seed Bed Areas must be obtained from the Department of Wildlife and Fisheries and any work done under a mineral lease from the State of Louisiana may necessarily be conducted in conformity with the rules and regulations promulgated by the said Department of Wildlife and Fisheries for Oyster Seed Bed Areas.

Applicant: Harold J. Anderson, Inc.

Bidder	Cash Payment	Price/Acre	Rental	Oil	Gas	Other



TRACT 36018 - St. Mary Parish, Louisiana

A portion of all lands located above the mean high water mark, together with lands now or formerly constituting the beds and bottoms of any water body of whatever description or nature belonging to the State of Louisiana which is now located within the boundaries of the Atchafalaya Delta Wildlife Management Area and not presently under mineral lease by the State of Louisiana on January 14, 2004, and more particularly located as follows: Beginning at the Southeast corner of State Lease No. 17791 having Coordinates of X = 2,014,981.00 and Y = 285,734.96; Thence South 7,751.39 feet to a point having Coordinates of X = 2,014,981.00 and Y = 277,983.57; Thence West 14,201.21 feet to the Southeast corner of State Lease No. 5098, as amended, having Coordinates of X = 2,000,779.79 and Y = 277,983.57; Thence North 3,036.55 feet along the East boundary of said State Lease No. 5098, as amended, to its Northeast corner, also being a point on the South boundary of State Lease No. 5097, as amended, having Coordinates of X = 2,000,779.79 and Y = 281,020.12; Thence East 778.06 feet along the said South boundary of State Lease No. 5097, as amended, to its Southeast corner, also being the Southwest corner of State Lease No. 17790 having Coordinates of X = 2,001,557.85 and Y = 281,020.12; Thence East 4,200.00 feet along the South boundary of said State Lease No. 17790 to its Southeast corner having Coordinates of X = 2,005,757.85 and Y = 281,020.12; Thence North 30 degrees 45 minutes 12 seconds East 7,572.54 feet along the East boundary of said State lease No. 17790 to its Northeast corner, also being the Southeast corner of State Lease No. 17370 having Coordinates of X = 2,009,630.00 and Y = 287,527.79; Thence North 41 degrees 21 minutes 17 seconds East 1,871.75 feet along the East boundary of said State Lease No. 17370 to the Southwest corner of State Lease No. 17789 having Coordinates of X = 2,010,866.70 and Y = 288,932.79; Thence South 52 degrees 08 minutes 38 seconds East 2,677.83 feet along the South boundary of said State Lease No. 17789 to its Southeast corner, also being the most Southerly Southwest corner of said State Lease No. 17791 having Coordinates of X = 2,012,981.00 and Y = 287,289.46; Thence South 52 degrees 08 minutes 38 seconds East 2,533.08 feet along the South boundary of said State Lease No. 17791 to the point of beginning, containing approximately **2,080.25 acres**, all as more particularly outlined on a plat on file in the Office of Mineral Resources, Department of Natural Resources. All bearings, distances and coordinates are based on Louisiana Coordinate System of 1927, (South Zone).

NOTE: The above description of the Tract nominated for lease has been provided and corrected, where required, exclusively by the nomination party. Any mineral lease selected from this Tract and awarded by the Louisiana State Mineral Board shall be without warranty of any kind, either express, implied, or statutory, including, but not limited to, the implied warranties of merchantability and fitness for a particular purpose. Should the mineral lease awarded by the Louisiana State Mineral Board be subsequently modified, cancelled or abrogated due to the existence of conflicting leases, operating agreements, private claims or other future obligations or conditions which may affect all or any portion

of the leased Tract, it shall not relieve the Lessee of the obligation to pay any bonus due thereon to the Louisiana State Mineral Board, nor shall the Louisiana State Mineral Board be obligated to refund any consideration paid by the Lessor prior to such modification, cancellation, or abrogation, including, but not limited to, bonuses, rentals and royalties.

NOTE: The mineral lease is located in the Atchafalaya Delta WMA under the jurisdiction of the Louisiana Department of Wildlife and Fisheries which has promulgated rules and regulations for the protection of game and wildlife on the aforesaid Tract and, therefore, shall be subject to said rules and regulations, a copy of which shall be attached to the mineral lease. In addition to the specific rules and regulations applicable, the following shall apply regarding operations under this mineral lease:

1. No activities will be allowed without written authorization of the Louisiana Department of Wildlife and Fisheries.
2. Proposed projects will be evaluated on a case by case basis. Modifications to proposed project features including, but not limited to, access routes, spoil placement, well sites, flow lines and appurtenant structures may be required by the Department of Wildlife and Fisheries.
3. Compliance with the Atchafalaya Delta WMA regulations will be required unless otherwise specified by the Department of Wildlife and Fisheries.
4. Compensatory mitigation will be required to offset unavoidable wetland impacts.
5. Removal of all structures, facilities and equipment will be required within 120 days of abandonment unless otherwise agreed to in writing by the Department of Wildlife and Fisheries.
6. No activities will be allowed during the hunting season unless authorized by the Department.
7. Prior to submitting applications for wetland permits to Federal and State permitting agencies the lease holder shall coordinate project details with the Department of Wildlife and Fisheries. Contact person for the Department will be Mike Windham at (504) 568-5886.

NOTE: The Department will require a minimum bonus of \$350.00 per acre and a minimum royalty of 25%.

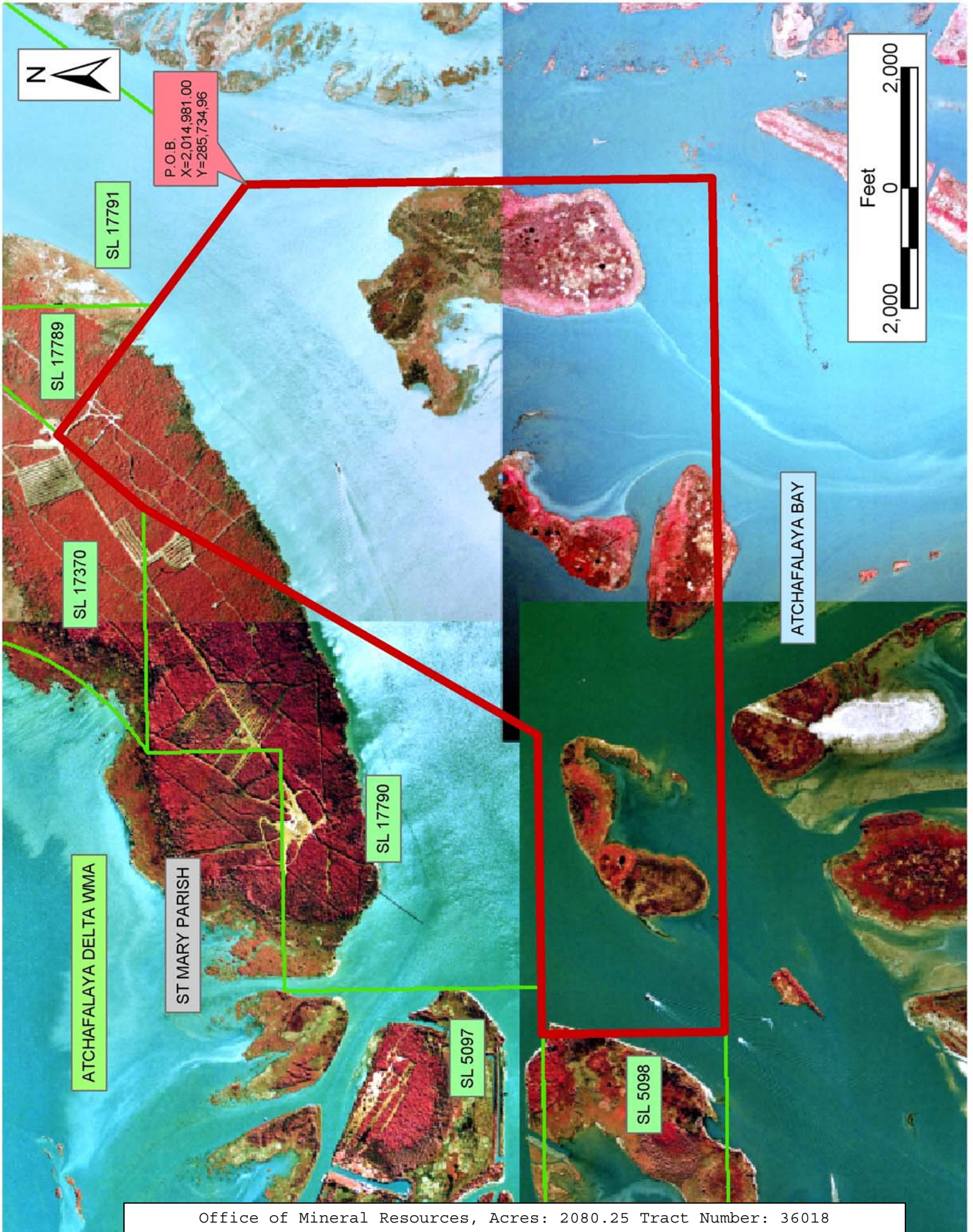
NOTE: The State of Louisiana does hereby reserve, and this lease shall be subject to, the imprescriptible right of surface use in the nature of a servitude in favor of the Department of Natural Resources, including its Offices and Commissions, for the sole purpose of implementing, constructing, servicing and maintaining approved coastal zone management and/or restoration projects. Utilization of any and all rights derived under this lease by the mineral lessee, its agents, successors or assigns, shall not interfere with nor hinder the reasonable surface use by the Department of Natural Resources, its Offices or Commissions, as herein above reserved.

NOTE: The Department of Wildlife and Fisheries has designated certain areas in the coastal waters of the State of Louisiana as Oyster Seed Bed

Areas. The exact location of those Seed Bed Areas must be obtained from the Department of Wildlife and Fisheries and any work done under a mineral lease from the State of Louisiana may necessarily be conducted in conformity with the rules and regulations promulgated by the said Department of Wildlife and Fisheries for Oyster Seed Bed Areas.

Applicant: Harold J. Anderson, Inc.

Bidder	Cash Payment	Price/Acre	Rental	Oil	Gas	Other



TRACT 36019 - St. Mary and Terrebonne Parishes, Louisiana

A portion of all lands located above the mean high water mark, together with lands now or formerly constituting the beds and bottoms of any water body of whatever description or nature belonging to the State of Louisiana which is now located within the boundaries of the Atchafalaya Delta Wildlife Management Area and not presently under mineral lease by the State of Louisiana on January 14, 2004, and more particularly located as follows: Beginning at the Southeast corner of State Lease No. 17791 having Coordinates of X = 2,014,981.00 and Y = 285,734.96; Thence East 9,048.08 feet to a point having Coordinates of X = 2,024,029.08 and Y = 285,734.96; Thence South 03 degrees 08 minutes 02 seconds West 2,879.80 feet to a point having Coordinates of X = 2,023,871.64 and Y = 282,859.47; Thence North 89 degrees 49 minutes 17 seconds East 2,389.48 feet to a point having Coordinates of X = 2,026,261.11 and Y = 282,866.92; Thence South 66 degrees 23 minutes 31 seconds East 2,679.82 feet to a point having Coordinates of X = 2,028,716.65 and Y = 281,793.71; Thence South 52 degrees 30 minutes 34 seconds East 672.10 feet to a point having Coordinates of X = 2,029,249.93 and Y = 281,384.65; Thence South 3,401.08 feet to a point having Coordinates of X = 2,029,249.93 and Y = 277,983.57; Thence West 14,268.93 feet to a point having Coordinates of X = 2,014,981.00 and Y = 277,983.57; Thence North 7,751.39 feet to the point of beginning, containing approximately **2,144.11 acres**, all as more particularly outlined on a plat on file in the Office of Mineral Resources, Department of Natural Resources. All bearings, distances and coordinates are based on Louisiana Coordinate System of 1927, (South Zone).

NOTE: The above description of the Tract nominated for lease has been provided and corrected, where required, exclusively by the nomination party. Any mineral lease selected from this Tract and awarded by the Louisiana State Mineral Board shall be without warranty of any kind, either express, implied, or statutory, including, but not limited to, the implied warranties of merchantability and fitness for a particular purpose. Should the mineral lease awarded by the Louisiana State Mineral Board be subsequently modified, cancelled or abrogated due to the existence of conflicting leases, operating agreements, private claims or other future obligations or conditions which may affect all or any portion of the leased Tract, it shall not relieve the Lessee of the obligation to pay any bonus due thereon to the Louisiana State Mineral Board, nor shall the Louisiana State Mineral Board be obligated to refund any consideration paid by the Lessor prior to such modification, cancellation, or abrogation, including, but not limited to, bonuses, rentals and royalties.

NOTE: The mineral lease is located in the Atchafalaya Delta WMA under the jurisdiction of the Louisiana Department of Wildlife and Fisheries which has promulgated rules and regulations for the protection of game and wildlife on the aforesaid Tract and, therefore, shall be subject to said rules and regulations, a copy of which shall be attached to the mineral

lease. In addition to the specific rules and regulations applicable, the following shall apply regarding operations under this mineral lease:

1. No activities will be allowed without written authorization of the Louisiana Department of Wildlife and Fisheries.
2. Proposed projects will be evaluated on a case by case basis. Modifications to proposed project features including, but not limited to, access routes, spoil placement, well sites, flow lines and appurtenant structures may be required by the Department of Wildlife and Fisheries.
3. Compliance with the Atchafalaya Delta WMA regulations will be required unless otherwise specified by the Department of Wildlife and Fisheries.
4. Compensatory mitigation will be required to offset unavoidable wetland impacts.
5. Removal of all structures, facilities and equipment will be required within 120 days of abandonment unless otherwise agreed to in writing by the Department of Wildlife and Fisheries.
6. No activities will be allowed during the hunting season unless authorized by the Department.
7. Prior to submitting applications for wetland permits to Federal and State permitting agencies the lease holder shall coordinate project details with the Department of Wildlife and Fisheries. Contact person for the Department will be Mike Windham at (504) 568-5886.

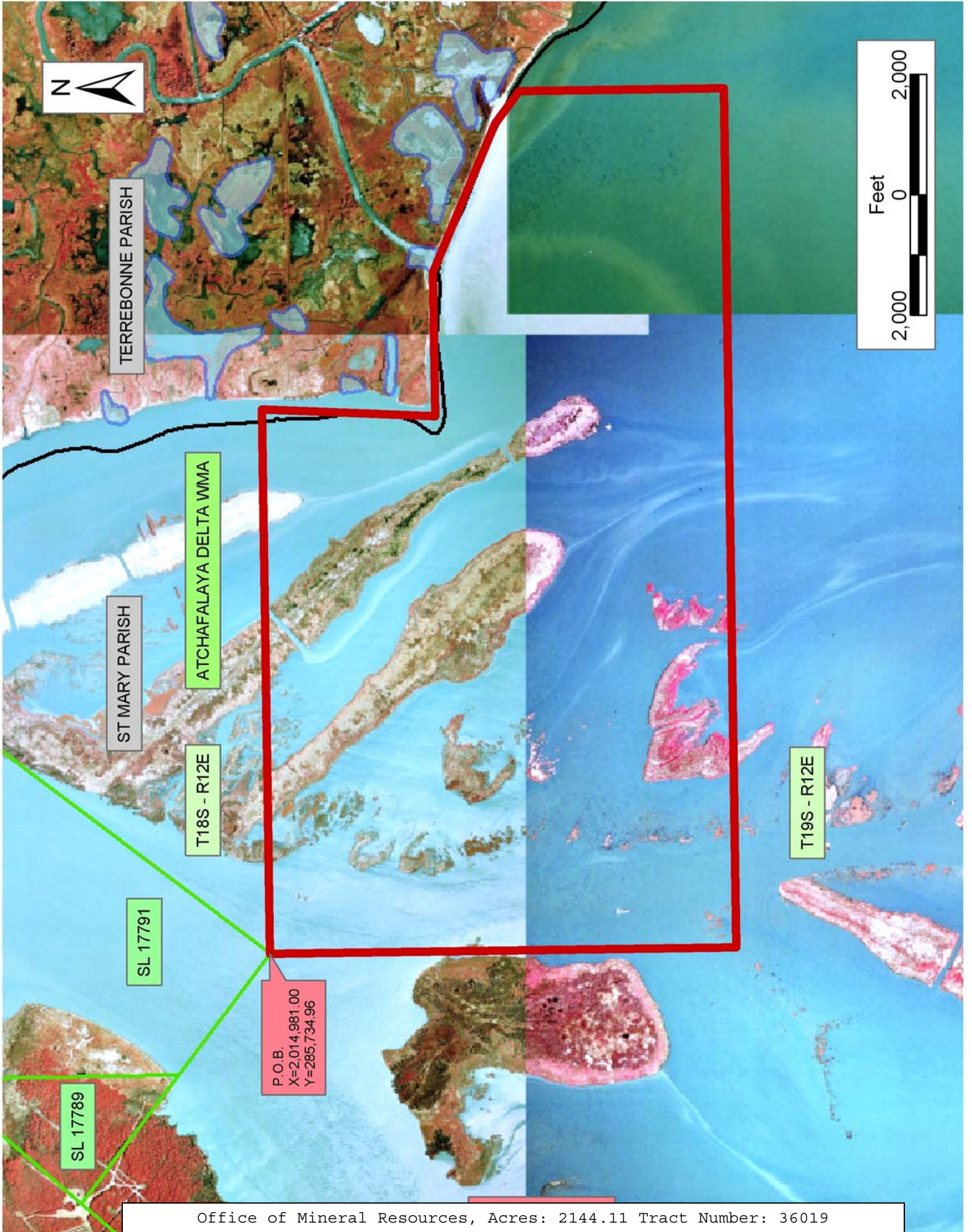
NOTE: The Department will require a minimum bonus of \$350.00 per acre and a minimum royalty of 25%.

NOTE: The State of Louisiana does hereby reserve, and this lease shall be subject to, the imprescriptible right of surface use in the nature of a servitude in favor of the Department of Natural Resources, including its Offices and Commissions, for the sole purpose of implementing, constructing, servicing and maintaining approved coastal zone management and/or restoration projects. Utilization of any and all rights derived under this lease by the mineral lessee, its agents, successors or assigns, shall not interfere with nor hinder the reasonable surface use by the Department of Natural Resources, its Offices or Commissions, as herein above reserved.

NOTE: The Department of Wildlife and Fisheries has designated certain areas in the coastal waters of the State of Louisiana as Oyster Seed Bed Areas. The exact location of those Seed Bed Areas must be obtained from the Department of Wildlife and Fisheries and any work done under a mineral lease from the State of Louisiana may necessarily be conducted in conformity with the rules and regulations promulgated by the said Department of Wildlife and Fisheries for Oyster Seed Bed Areas.

Applicant: Harold J. Anderson, Inc.

Bidder	Cash Payment	Price/Acre	Rental	Oil	Gas	Other



TERREBONNE PARISH

ST MARY PARISH

ATCHAFALAYA DELTA WMA

T18S - R12E

T19S - R12E

SL 17791

SL 17789

P.O.B.
X=2,014,981.00
Y=285,734.96

