

**TRACT 35950 - Portion of Blocks 27, and 38, South Pass Area, Plaquemines Parish, Louisiana**

The beds and bottoms of all water bodies belonging to the State of Louisiana located in that portion of Blocks 27, and 38, South Pass Area, together with any present lands formed by accretion to the shoreline, located in Plaquemines Parish, Louisiana, and not presently under mineral lease on January 14, 2004, the geographical area of which is more fully described as follows: Beginning at a point on the West line of Block 27, South Pass Area, also being the Southwest corner of State Lease No. 1011, as amended having Coordinates of X = 2,645,444.00 and Y = 121,225.00; thence along the boundary of said State Lease No. 1011 the following courses: East 8,885.32 feet, South 20 degrees 46 minutes 55 seconds West 2,331.71 feet and East 3,195.12 feet to a point on the South line of said State Lease No. 1011 having Coordinates of X = 2,656,697.12 and Y = 119,045.00; thence Southwesterly on a straight line to a point having Coordinates of X = 2,656,605.00 and Y = 119,022.00; thence Southwesterly on an arc having a radius of 18,240.60 feet and a center at X = 2,641,835.00 and Y = 129,725.00 to a point having Coordinates of X = 2,656,150.00 and Y = 118,421.00; thence Southwesterly on a straight line to a point having Coordinates of X = 2,653,860.00 and Y = 115,521.00; thence Southwesterly on an arc having a radius of 18,240.60 feet and a center at X = 2,639,545.00 and Y = 126,825.00 to a point on the South line of said Block 27, also being a point on the North line of Block 38, South Pass Area, having Coordinates of X = 2,649,690.16 and Y = 111,666.00; thence Southwesterly on an arc having a radius of 18,240.60 feet and a center at X = 2,639,545.00 and Y = 126,825.00 to a point having Coordinates of X = 2,648,682.00 and Y = 111,038.00; thence Southwesterly on a straight line to a point having Coordinates of X = 2,648,610.00 and Y = 110,974.00; thence Southwesterly on a straight line to a point having Coordinates of X = 2,648,531.00 and Y = 110,887.00; thence Southwesterly on a straight line to a point having Coordinates of X = 2,646,419.00 and Y = 107,265.00; thence Southwesterly on an arc having a radius of 18,240.60 feet and a center at X = 2,630,660.00 and Y = 116,450.00 to a point having Coordinates of X = 2,646,250.00 and Y = 106,981.00; thence Southwesterly on a straight line to a point on the West line of said Block 38 having Coordinates of X = 2,645,444.00 and Y = 105,653.95; thence North 6,012.05 feet along the West line of said Block 38 to its Northwest corner, also being the Southwest corner of said Block 27 having Coordinates of X = 2,645,444.00 and Y = 111,666.00; thence North 9,559.00 feet along the West line of said Block 27 to the point of beginning, **LESS AND EXCEPT**, that portion, if any, of State Lease No. 1011, that may lie within the above described tract, containing approximately **2,048.98 acres**, **LESS AND EXCEPT** that portion thereof, if any, lying seaward of the line three nautical miles from the coast line of Louisiana, as said three mile line has been decreed by the Supreme Court of the United States, as determined by a Special Master appointed therein, in litigation styled **United States v. State of Louisiana et al No. 9 Original**, in 1975, all as more particularly outlined on a plat in the Office of Mineral Resources, Department of

Natural Resources. All bearings, distances and coordinates are based on the Louisiana Coordinate System of 1927, (South Zone).

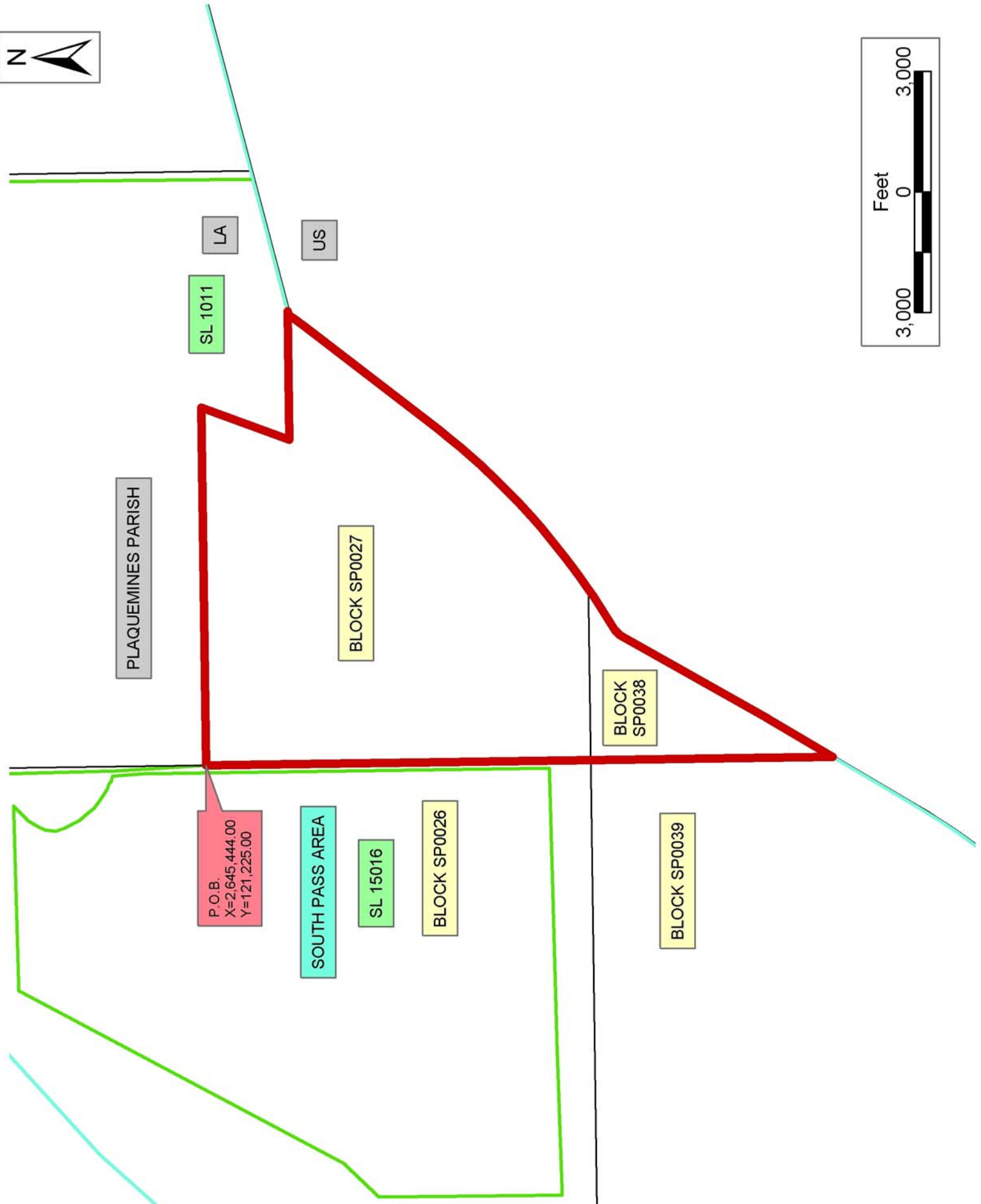
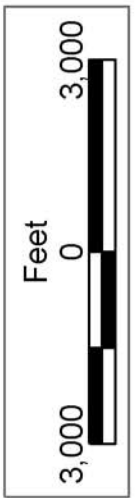
NOTE: The above description of the Tract nominated for lease has been provided and corrected, where required, exclusively by the nomination party. Any mineral lease selected from this Tract and awarded by the Louisiana State Mineral Board shall be without warranty of any kind, either express, implied, or statutory, including, but not limited to, the implied warranties of merchantability and fitness for a particular purpose. Should the mineral lease awarded by the Louisiana State Mineral Board be subsequently modified, cancelled or abrogated due to the existence of conflicting leases, operating agreements, private claims or other future obligations or conditions which may affect all or any portion of the leased Tract, it shall not relieve the Lessee of the obligation to pay any bonus due thereon to the Louisiana State Mineral Board, nor shall the Louisiana State Mineral Board be obligated to refund any consideration paid by the Lessor prior to such modification, cancellation, or abrogation, including, but not limited to, bonuses, rentals and royalties.

NOTE: The State of Louisiana does hereby reserve, and this lease shall be subject to, the imprescriptible right of surface use in the nature of a servitude in favor of the Department of Natural Resources, including its Offices and Commissions, for the sole purpose of implementing, constructing, servicing and maintaining approved coastal zone management and/or restoration projects. Utilization of any and all rights derived under this lease by the mineral lessee, its agents, successors or assigns, shall not interfere with nor hinder the reasonable surface use by the Department of Natural Resources, its Offices or Commissions, as herein above reserved.

NOTE: The Department of Wildlife and Fisheries has designated certain areas in the coastal waters of the State of Louisiana as Oyster Seed Bed Areas. The exact location of those Seed Bed Areas must be obtained from the Department of Wildlife and Fisheries and any work done under a mineral lease from the State of Louisiana may necessarily be conducted in conformity with the rules and regulations promulgated by the said Department of Wildlife and Fisheries for Oyster Seed Bed Areas.

Bidder	Cash Payment	Price/ Acre	Rental	Oil	Gas	Other

Applicant: Angelle & Donohue Oil & Gas Properties, Inc.



**TRACT 35951 - Portion of Blocks 26, and 39, South Pass Area, Plaquemines Parish, Louisiana**

The beds and bottoms of all water bodies belonging to the State of Louisiana located in that portion of Blocks 26, and 39, South Pass Area, together with any present lands formed by accretion to the shoreline, located in Plaquemines Parish, Louisiana, and not presently under mineral lease on January 14, 2004, the geographical area of which is more fully described as follows: Beginning at a point on the West line of Block 39, South Pass Area, having Coordinates of X = 2,630,686.00 and Y = 105,772.00; thence North 5,894.00 feet along the West line of said Block 30 to its Northwest corner having Coordinates of X = 2,630,686.00 and Y = 111,666.00; thence East 4,563.10 feet along the North line of said Block 39 to a point, and a point on the South line of Block 26, South Pass Area, also being the Southeast corner of State Lease No. 17203 having Coordinates of X = 2,635,249.10 and Y = 111,666.00; thence North 00 degrees 00 minutes 01 seconds East 2,147.13 feet along the East line of said State Lease No. 17203 to a point, also being the Southwest corner of State Lease No. 15016 having Coordinates of X = 2,635,249.11 and Y = 113,813.13; thence East 10,194.89 feet along the South line of said State Lease No. 15016 to its Southeast corner, also being a point on the East line of said Block 26 having Coordinates of X = 2,645,444.00 and Y = 113,813.13; thence South 2,147.13 feet along the East line of said Block 26 to its Southeast corner, also being the Northeast corner of said Block 39 having Coordinates of X = 2,645,444.00 and Y = 111,666.00; thence South 5,894.00 feet along the East line of said Block 39 to a point having Coordinates of X = 2,645,444.00 and Y = 105,772.00; thence West 14,758.00 feet to the point of beginning, containing approximately **2,499.39 acres, LESS AND EXCEPT** that portion thereof, if any, lying seaward of the line three nautical miles from the coast line of Louisiana, as said three mile line has been decreed by the Supreme Court of the United States, as determined by a Special Master appointed therein, in litigation styled **United States v. State of Louisiana et al No. 9 Original**, in 1975, all as more particularly outlined on a plat in the Office of Mineral Resources, Department of Natural Resources. All bearings, distances and coordinates are based on the Louisiana Coordinate System of 1927, (South Zone).

NOTE: The above description of the Tract nominated for lease has been provided and corrected, where required, exclusively by the nomination party. Any mineral lease selected from this Tract and awarded by the Louisiana State Mineral Board shall be without warranty of any kind, either express, implied, or statutory, including, but not limited to, the implied warranties of merchantability and fitness for a particular purpose. Should the mineral lease awarded by the Louisiana State Mineral Board be subsequently modified, cancelled or abrogated due to the existence of conflicting leases, operating agreements, private claims or other future obligations or conditions which may affect all or any portion of the leased Tract, it shall not relieve the Lessee of the obligation to pay any bonus due thereon to the Louisiana State Mineral Board, nor shall the Louisiana State Mineral Board be obligated to refund any consideration

paid by the Lessor prior to such modification, cancellation, or abrogation, including, but not limited to, bonuses, rentals and royalties.

NOTE: The State of Louisiana does hereby reserve, and this lease shall be subject to, the imprescriptible right of surface use in the nature of a servitude in favor of the Department of Natural Resources, including its Offices and Commissions, for the sole purpose of implementing, constructing, servicing and maintaining approved coastal zone management and/or restoration projects. Utilization of any and all rights derived under this lease by the mineral lessee, its agents, successors or assigns, shall not interfere with nor hinder the reasonable surface use by the Department of Natural Resources, its Offices or Commissions, as herein above reserved.

NOTE: The Department of Wildlife and Fisheries has designated certain areas in the coastal waters of the State of Louisiana as Oyster Seed Bed Areas. The exact location of those Seed Bed Areas must be obtained from the Department of Wildlife and Fisheries and any work done under a mineral lease from the State of Louisiana may necessarily be conducted in conformity with the rules and regulations promulgated by the said Department of Wildlife and Fisheries for Oyster Seed Bed Areas.

Applicant: Angelle & Donohue Oil & Gas Properties, Inc.

Bidder	Cash Payment	Price/ Acre	Rental	Oil	Gas	Other



SOUTH PASS AREA

PLAQUEMINES PARISH

BLOCK SP0026

SL 15016

SL 17203

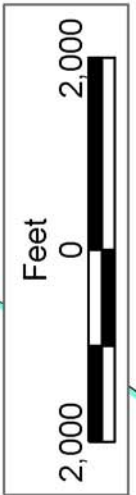
SL 17194

US

LA

BLOCK SP0039

P.O.B.  
X=2,630,686.00  
Y=105,772.00



**TRACT 35952 - Portion of Block 81, West Delta Area, Plaquemines Parish, Louisiana**

The beds and bottoms of all water bodies belonging to the State of Louisiana located in that portion of Block 81, West Delta Area, together with any present lands formed by accretion to the shoreline, located in Plaquemines Parish, Louisiana, and not presently under mineral lease on January 14, 2004, the geographical area of which is more fully described as follows: Beginning at a point on the East line of Block 81, West Delta Area, having Coordinates of X = 2,605,477.93 and Y = 113,414.00; thence South 10,421.90 feet along the East line of said Block 81 to its Southeast corner having Coordinates of X = 2,605,477.93 and Y = 102,992.10; thence West 10,450.00 feet along the South line of said Block 81 to its Southwest corner having Coordinates of X = 2,595,027.93 and Y = 102,992.10; thence North 5,163.79 feet along the West line of said Block 81 to a point having Coordinates of X = 2,595,027.93 and Y = 108,155.89; thence Northeasterly on a straight line to a point having Coordinates of X = 2,595,167.00 and Y = 108,350.00; thence Northeasterly on a straight line to a point having Coordinates of X = 2,596,041.00 and Y = 109,955.00; thence Northeasterly on an arc having a radius of 18,240.60 feet and a center at X = 2,614,270.00 and Y = 110,615.00 to a point having Coordinates of X = 2,596,245.44 and Y = 113,414.00; thence East 9,232.49 feet to the point of beginning, containing approximately **2394.48 acres, LESS AND EXCEPT** that portion thereof, if any, lying seaward of the line three nautical miles from the coast line of Louisiana, as said three mile line has been decreed by the Supreme Court of the United States, as determined by a Special Master appointed therein, in litigation styled **United States v. State of Louisiana et al No. 9 Original**, in 1975, all as more particularly outlined on a plat in the Office of Mineral Resources, Department of Natural Resources. All bearings, distances and coordinates are based on the Louisiana Coordinate System of 1927, (South Zone).

NOTE: The above description of the Tract nominated for lease has been provided and corrected, where required, exclusively by the nomination party. Any mineral lease selected from this Tract and awarded by the Louisiana State Mineral Board shall be without warranty of any kind, either express, implied, or statutory, including, but not limited to, the implied warranties of merchantability and fitness for a particular purpose. Should the mineral lease awarded by the Louisiana State Mineral Board be subsequently modified, cancelled or abrogated due to the existence of conflicting leases, operating agreements, private claims or other future obligations or conditions which may affect all or any portion of the leased Tract, it shall not relieve the Lessee of the obligation to pay any bonus due thereon to the Louisiana State Mineral Board, nor shall the Louisiana State Mineral Board be obligated to refund any consideration paid by the Lessor prior to such modification, cancellation, or abrogation, including, but not limited to, bonuses, rentals and royalties.

NOTE: The State of Louisiana does hereby reserve, and this lease shall be subject to, the imprescriptible right of surface use in the nature of a



servitude in favor of the Department of Natural Resources, including its Offices and Commissions, for the sole purpose of implementing, constructing, servicing and maintaining approved coastal zone management and/or restoration projects. Utilization of any and all rights derived under this lease by the mineral lessee, its agents, successors or assigns, shall not interfere with nor hinder the reasonable surface use by the Department of Natural Resources, its Offices or Commissions, as herein above reserved.

Applicant: Angelle & Donohue Oil & Gas Properties, Inc.

Bidder	Cash Payment	Price/ Acre	Rental	Oil	Gas	Other



WEST DELTA AREA

P.O.B.  
X=2,605,477.93  
Y=113,414.00

BLOCK WD0082

BLOCK WD0081

SOUTH PASS AREA



PLAQUEMINES PARISH

SL 17191

SL 17192

**TRACT 35953 - Portion of Block 82, West Delta Area, Plaquemines Parish, Louisiana**

The beds and bottoms of all water bodies belonging to the State of Louisiana located in that portion of Block 82, West Delta Area, together with any present lands formed by accretion to the shoreline, located in Plaquemines Parish, Louisiana, and not presently under mineral lease on January 14, 2004, the geographical area of which is more fully described as follows: Beginning at a point on the West line of Block 82, West Delta Area, having Coordinates of X = 2,605,477.93 and Y = 113,414.00; thence East approximately 9,220 feet to a point on the boundary of State Lease No. 2565 having a Coordinate of Y = 113,414.00; thence Southwesterly along the boundaries of said State Lease No. 2565 and State Lease No. 2566 to a point having a Coordinate of Y = 103,492.10; thence West approximately 3,513 feet to a point having Coordinates of X = 2,609,777.93 and Y = 103,492.10; thence South 500.00 feet to a point on the South line of said Block 82 having Coordinates of X = 2,609,777.93 and Y = 102,992.10; thence West 4,300.00 feet along the South line of said Block 82 to its Southwest corner having Coordinates of X = 2,605,477.93 and Y = 102,992.10; thence North 10,421.90 feet along the West line of said Block 82 to the point of beginning, **LESS AND EXCEPT** those portions of said State Lease No. 2565 and said State Lease No. 2566 that may lie within the above described tract, containing approximately **2,102 acres**, all as more particularly outlined on a plat on file in the Office of Mineral Resources, Department of Natural Resources. All bearings, distances and coordinates are based on Louisiana Coordinate System of 1927, (North or South Zone).

NOTE: The above description of the Tract nominated for lease has been provided and corrected, where required, exclusively by the nomination party. Any mineral lease selected from this Tract and awarded by the Louisiana State Mineral Board shall be without warranty of any kind, either express, implied, or statutory, including, but not limited to, the implied warranties of merchantability and fitness for a particular purpose. Should the mineral lease awarded by the Louisiana State Mineral Board be subsequently modified, cancelled or abrogated due to the existence of conflicting leases, operating agreements, private claims or other future obligations or conditions which may affect all or any portion of the leased Tract, it shall not relieve the Lessee of the obligation to pay any bonus due thereon to the Louisiana State Mineral Board, nor shall the Louisiana State Mineral Board be obligated to refund any consideration paid by the Lessor prior to such modification, cancellation, or abrogation, including, but not limited to, bonuses, rentals and royalties.

NOTE: The State of Louisiana does hereby reserve, and this lease shall be subject to, the imprescriptible right of surface use in the nature of a servitude in favor of the Department of Natural Resources, including its Offices and Commissions, for the sole purpose of implementing, constructing, servicing and maintaining approved coastal zone management and/or restoration projects. Utilization of any and all rights derived under this lease by the mineral lessee, its agents, successors or assigns,

shall not interfere with nor hinder the reasonable surface use by the Department of Natural Resources, its Offices or Commissions, as herein above reserved.

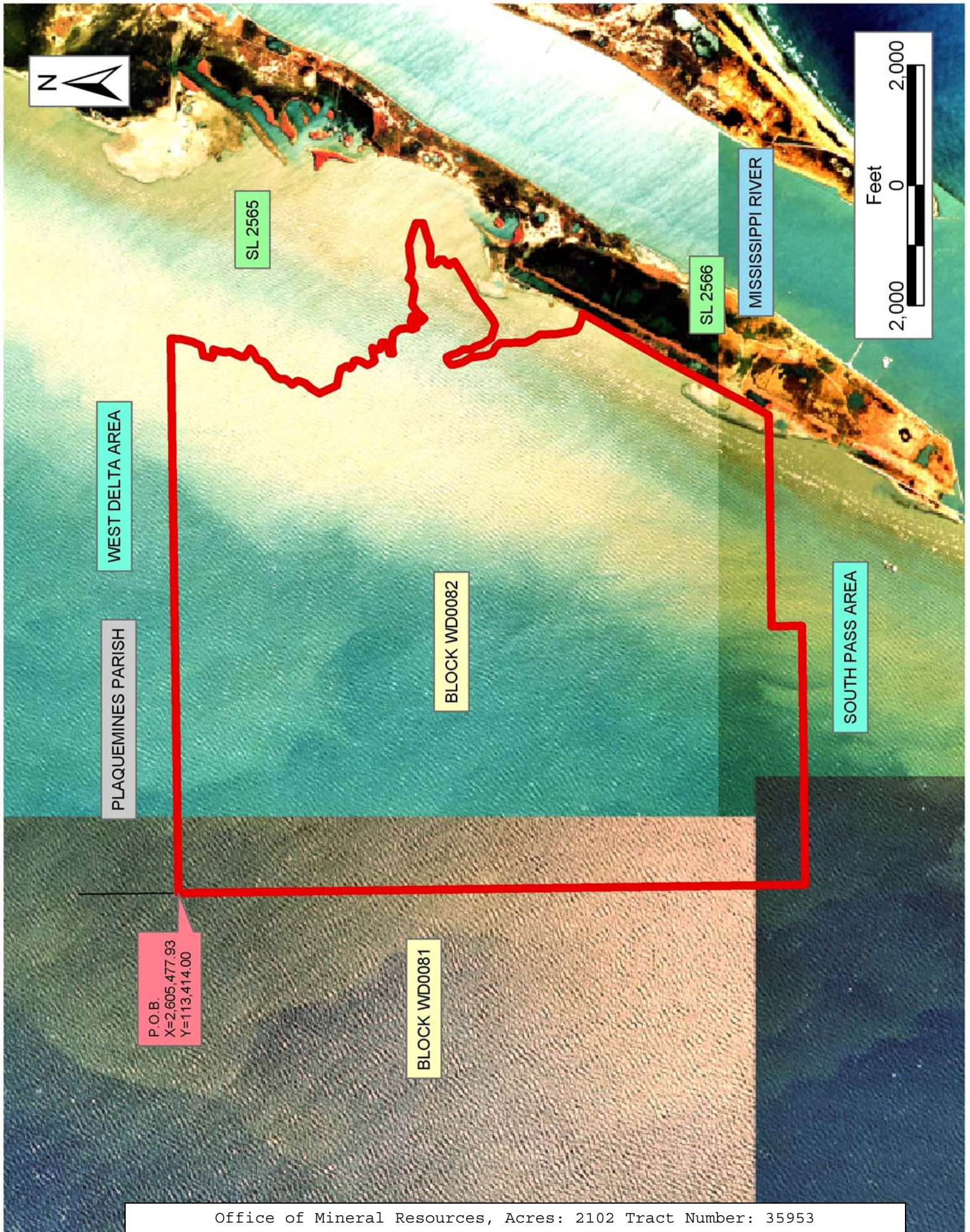
NOTE: It appears, according to our records, that a portion of this Tract is located within the restrictive safety fairway area as set out by the Corps of Engineers, U.S. Army and/or the restrictive anchorage area as set out by the U.S. Coast Guard.

NOTE: The Department of Wildlife and Fisheries has designated certain areas in the coastal waters of the State of Louisiana as Oyster Seed Bed Areas. The exact location of those Seed Bed Areas must be obtained from the Department of Wildlife and Fisheries and any work done under a mineral lease from the State of Louisiana may necessarily be conducted in conformity with the rules and regulations promulgated by the said Department of Wildlife and Fisheries for Oyster Seed Bed Areas.

Applicant: Angelle & Donohue Oil & Gas Properties, Inc.

Bidder	Cash Payment	Price/ Acre	Rental	Oil	Gas	Other







**TRACT 35954 - Portion of Block 39, South Pass Area, Plaquemines Parish, Louisiana**

The beds and bottoms of all water bodies belonging to the State of Louisiana located in that portion of Block 39, South Pass Area, together with any present lands formed by accretion to the shoreline, located in Plaquemines Parish, Louisiana, and not presently under mineral lease on January 14, 2004, the geographical area of which is more fully described as follows: Beginning at the Southwest corner of Block 39, South Pass Area, having Coordinates of X = 2,630,686.00 and Y = 96,908.00; thence North 8,864.00 feet along the West line of said Block 39 to a point having Coordinates of X = 2,630,686.00 and Y = 105,772.00; thence East 14,758.00 feet to a point on the East line of said Block 39 having Coordinates of X = 2,645,444.00 and Y = 105,772.00; thence South 118.05 feet along the East line of said Block 39 to a point having Coordinates of X = 2,645,444.00 and Y = 105,653.95; thence Southwesterly on a straight line to a point having Coordinates of X = 2,644,270.00 and Y = 103,721.00; thence Southwesterly on an arc having a radius of 18,240.60 feet and a center at X = 2,624,995.00 and Y = 108,700.00 to a point having Coordinates of X = 2,642,494.00 and Y = 101,278.00; thence Southwesterly on a straight line to a point having Coordinates of X = 2,640,182.00 and Y = 98,597.00; thence Southwesterly on an arc having a radius of 18,240.60 feet and a center at X = 2,628,680.00 and Y = 113,190.00 to a point on the South line of said Block 39 having Coordinates of X = 2,638,911.47 and Y = 96,908.00; thence West 8,225.47 feet along the South line of said Block 39 to the point of beginning, containing approximately **2,383.92 acres, LESS AND EXCEPT** that portion thereof, if any, lying seaward of the line three nautical miles from the coast line of Louisiana, as said three mile line has been decreed by the Supreme Court of the United States, as determined by a Special Master appointed therein, in litigation styled **United States v. State of Louisiana et al No. 9 Original**, in 1975, all as more particularly outlined on a plat in the Office of Mineral Resources, Department of Natural Resources. All bearings, distances and coordinates are based on the Louisiana Coordinate System of 1927, (South Zone).

NOTE: The above description of the Tract nominated for lease has been provided and corrected, where required, exclusively by the nomination party. Any mineral lease selected from this Tract and awarded by the Louisiana State Mineral Board shall be without warranty of any kind, either express, implied, or statutory, including, but not limited to, the implied warranties of merchantability and fitness for a particular purpose. Should the mineral lease awarded by the Louisiana State Mineral Board be subsequently modified, cancelled or abrogated due to the existence of conflicting leases, operating agreements, private claims or other future obligations or conditions which may affect all or any portion of the leased Tract, it shall not relieve the Lessee of the obligation to pay any bonus due thereon to the Louisiana State Mineral Board, nor shall the Louisiana State Mineral Board be obligated to refund any consideration paid by the Lessor prior to such modification, cancellation, or abrogation, including, but not limited to, bonuses, rentals and royalties.

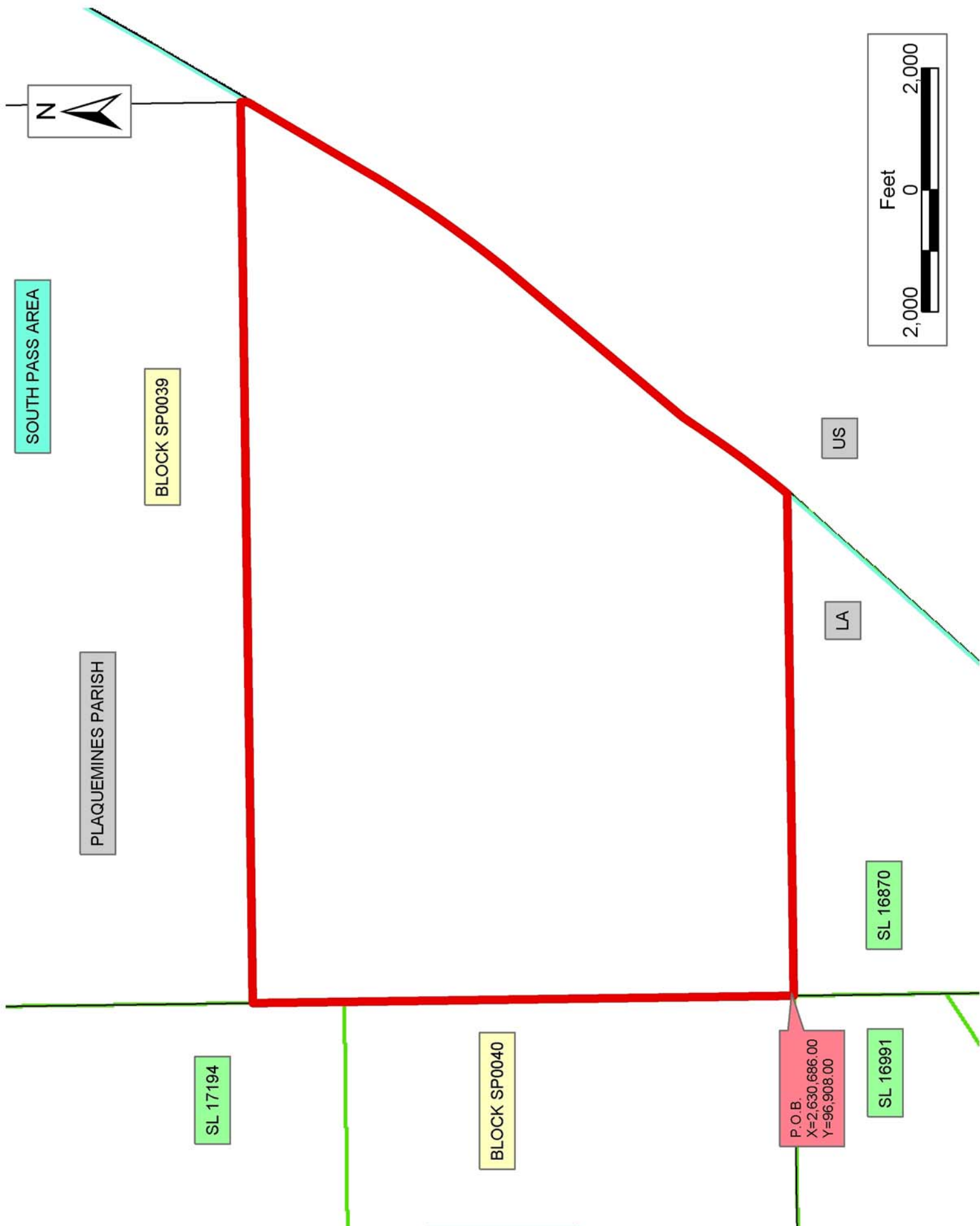
NOTE: The State of Louisiana does hereby reserve, and this lease shall be subject to, the imprescriptible right of surface use in the nature of a servitude in favor of the Department of Natural Resources, including its Offices and Commissions, for the sole purpose of implementing, constructing, servicing and maintaining approved coastal zone management and/or restoration projects. Utilization of any and all rights derived under this lease by the mineral lessee, its agents, successors or assigns, shall not interfere with nor hinder the reasonable surface use by the Department of Natural Resources, its Offices or Commissions, as herein above reserved.

NOTE: It appears, according to our records, that a portion of this Tract is located within the restrictive safety fairway area as set out by the Corps of Engineers, U.S. Army and/or the restrictive anchorage area as set out by the U.S. Coast Guard.

NOTE: The Department of Wildlife and Fisheries has designated certain areas in the coastal waters of the State of Louisiana as Oyster Seed Bed Areas. The exact location of those Seed Bed Areas must be obtained from the Department of Wildlife and Fisheries and any work done under a mineral lease from the State of Louisiana may necessarily be conducted in conformity with the rules and regulations promulgated by the said Department of Wildlife and Fisheries for Oyster Seed Bed Areas.

Applicant: Angelle & Donohue Oil & Gas Properties, Inc.

Bidder	Cash Payment	Price/ Acre	Rental	Oil	Gas	Other





**TRACT 35955 - Portion of Block 40, South Pass Area, Plaquemines Parish, Louisiana**

The beds and bottoms of all water bodies belonging to the State of Louisiana located in that portion of Block 40, South Pass Area, together with any present lands formed by accretion to the shoreline, located in Plaquemines Parish, Louisiana, and not presently under mineral lease on January 14, 2004, the geographical area of which is more fully described as follows: Beginning at the Southeast corner of Block 40, South Pass Area, having Coordinates of X = 2,630,686.00 and Y = 96,908.00; thence West 8,069.14 feet along the South line of said Block 40 to a point, also being the Southeast corner of State Lease No. 17195 having Coordinates of X = 2,622,616.86 and Y = 96,908.00; thence North 38 degrees 51 minutes 34 seconds East 9,476.20 feet along the East line of said State Lease No. 17195 to its Northeast corner, also being a point on the South line of State Lease No. 17194 having Coordinates of X = 2,628,562.34 and Y = 104,287.00; thence East 2,123.66 feet along the South line of said State Lease No. 17194 to its Southeast corner, also being a point on the East line of said Block 40 having Coordinates of X = 2,630,686.00 and Y = 104,287.00; thence South 7,379.00 feet along the East line of said Block 40 to the point of beginning, containing approximately **863.32 acres**, all as more particularly outlined on a plat on file in the Office of Mineral Resources, Department of Natural Resources. All bearings, distances and coordinates are based on Louisiana Coordinate System of 1927, (North or South Zone).

NOTE: The above description of the Tract nominated for lease has been provided and corrected, where required, exclusively by the nomination party. Any mineral lease selected from this Tract and awarded by the Louisiana State Mineral Board shall be without warranty of any kind, either express, implied, or statutory, including, but not limited to, the implied warranties of merchantability and fitness for a particular purpose. Should the mineral lease awarded by the Louisiana State Mineral Board be subsequently modified, cancelled or abrogated due to the existence of conflicting leases, operating agreements, private claims or other future obligations or conditions which may affect all or any portion of the leased Tract, it shall not relieve the Lessee of the obligation to pay any bonus due thereon to the Louisiana State Mineral Board, nor shall the Louisiana State Mineral Board be obligated to refund any consideration paid by the Lessor prior to such modification, cancellation, or abrogation, including, but not limited to, bonuses, rentals and royalties.

NOTE: The State of Louisiana does hereby reserve, and this lease shall be subject to, the imprescriptible right of surface use in the nature of a servitude in favor of the Department of Natural Resources, including its Offices and Commissions, for the sole purpose of implementing, constructing, servicing and maintaining approved coastal zone management and/or restoration projects. Utilization of any and all rights derived under this lease by the mineral lessee, its agents, successors or assigns, shall not interfere with nor hinder the reasonable surface use by the

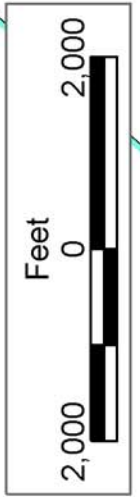
Department of Natural Resources, its Offices or Commissions, as herein above reserved.

NOTE: It appears, according to our records, that a portion of this Tract is located within the restrictive safety fairway area as set out by the Corps of Engineers, U.S. Army and/or the restrictive anchorage area as set out by the U.S. Coast Guard.

NOTE: The Department of Wildlife and Fisheries has designated certain areas in the coastal waters of the State of Louisiana as Oyster Seed Bed Areas. The exact location of those Seed Bed Areas must be obtained from the Department of Wildlife and Fisheries and any work done under a mineral lease from the State of Louisiana may necessarily be conducted in conformity with the rules and regulations promulgated by the said Department of Wildlife and Fisheries for Oyster Seed Bed Areas.

Applicant: Angelle & Donohue Oil & Gas Properties, Inc.

Bidder	Cash Payment	Price/ Acre	Rental	Oil	Gas	Other



PLAQUEMINES PARISH

BLOCK SP0039

P.O.B.  
X=2,630,686.00  
Y=96,908.00

SL 16870

SOUTH PASS AREA

SL 17194

SL 16991

SL 17195

BLOCK SP0040

**TRACT 35956 - Portion of Block 84, West Delta Area, Plaquemines Parish, Louisiana**

The beds and bottoms of all water bodies belonging to the State of Louisiana located in that portion of Block 84, West Delta Area, together with any present lands formed by accretion to the shoreline, located in Plaquemines Parish, Louisiana, and not presently under mineral lease on January 14, 2004, the geographical area of which is more fully described as follows: Beginning at a point on the West line of Block 84, West Delta Area, having Coordinates of X = 2,595,027.93 and Y = 89,350.00; thence North 13,642.10 feet along the West line of said Block 84 to its Northwest corner having Coordinates of X = 2,595,027.93 and Y = 102,992.10; thence East 10,450.00 feet along the North line of said Block 84 to its Northeast corner having Coordinates of X = 2,605,477.93 and Y = 102,992.10; thence South 4,734.74 feet along the East line of said Block 84 to a point, also being the Northeast corner of AO 232 having Coordinates of X = 2,605,477.93 and Y = 98,257.36; thence along the boundary of AO 232 the following courses: West 8,450.00 feet and South 8,907.36 feet to the Southwest corner of AO 232 having Coordinates of X = 2,597,027.93 and Y = 89,350.00; thence West 2,000.00 feet to the point of beginning, containing approximately **1,544.83 acres**, all as more particularly outlined on a plat on file in the Office of Mineral Resources, Department of Natural Resources. All bearings, distances and coordinates are based on Louisiana Coordinate System of 1927, (North or South Zone).

NOTE: The above description of the Tract nominated for lease has been provided and corrected, where required, exclusively by the nomination party. Any mineral lease selected from this Tract and awarded by the Louisiana State Mineral Board shall be without warranty of any kind, either express, implied, or statutory, including, but not limited to, the implied warranties of merchantability and fitness for a particular purpose. Should the mineral lease awarded by the Louisiana State Mineral Board be subsequently modified, cancelled or abrogated due to the existence of conflicting leases, operating agreements, private claims or other future obligations or conditions which may affect all or any portion of the leased Tract, it shall not relieve the Lessee of the obligation to pay any bonus due thereon to the Louisiana State Mineral Board, nor shall the Louisiana State Mineral Board be obligated to refund any consideration paid by the Lessor prior to such modification, cancellation, or abrogation, including, but not limited to, bonuses, rentals and royalties.

NOTE: The State of Louisiana does hereby reserve, and this lease shall be subject to, the imprescriptible right of surface use in the nature of a servitude in favor of the Department of Natural Resources, including its Offices and Commissions, for the sole purpose of implementing, constructing, servicing and maintaining approved coastal zone management and/or restoration projects. Utilization of any and all rights derived under this lease by the mineral lessee, its agents, successors or assigns, shall not interfere with nor hinder the reasonable surface use by the

Department of Natural Resources, its Offices or Commissions, as herein above reserved.

NOTE: The Department of Wildlife and Fisheries has designated certain areas in the coastal waters of the State of Louisiana as Oyster Seed Bed Areas. The exact location of those Seed Bed Areas must be obtained from the Department of Wildlife and Fisheries and any work done under a mineral lease from the State of Louisiana may necessarily be conducted in conformity with the rules and regulations promulgated by the said Department of Wildlife and Fisheries for Oyster Seed Bed Areas.

Applicant: Angelle & Donohue Oil & Gas Properties, Inc.

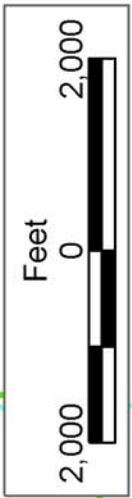
Bidder	Cash Payment	Price/ Acre	Rental	Oil	Gas	Other



WEST DELTA AREA

BLOCK SP0041

SOUTH PASS AREA



PLAQUEMINES PARISH

BLOCK WD0084

AO 0232

SL 17191

SL 17192

BLOCK WD0085

P.O.B.  
X=2,595,027.93  
Y=89,350.00

**TRACT 35957 - Portion of Block 41, South Pass Area, Plaquemines Parish, Louisiana**

The beds and bottoms of all water bodies belonging to the State of Louisiana located in that portion of Block 41, South Pass Area, together with any present lands formed by accretion to the shoreline, located in Plaquemines Parish, Louisiana, and not presently under mineral lease on January 14, 2004, the geographical area of which is more fully described as follows: Beginning at a point on the West line of Block 41, South Pass Area, having Coordinates of X = 2,605,477.93 and Y = 91,244.00; thence North 11,748.10 feet along the West line of said Block 41 to its Northwest corner having Coordinates of X = 2,605,477.93 and Y = 102,992.10; thence East 4,300.00 feet along the North line of said Block 41 to a point having Coordinates of X = 2,609,777.93 and Y = 102,992.10; thence South 1,141.81 feet to a point having Coordinates of X = 2,609,777.93 and Y = 101,850.29; thence East 619.49 feet to the Northwest corner of State Lease No. 17193 having Coordinates of X = 2,610,397.42 and Y = 101,850.29; thence along the boundary of said State Lease No. 17193 the following courses: South 29 degrees 01 minutes 30 seconds West 2,925.63 feet and South 2,985.42 feet to the Northwest corner of State Lease No. 17381 having Coordinates of X = 2,608,977.93 and Y = 96,306.68; thence along the boundary of said State Lease No. 17381 the following courses: South 35 degrees 37 minutes 33 seconds West 537.23 feet, South 29 degrees 15 minutes 25 seconds West 2,475.82 feet, South 05 degrees 52 minutes 11 seconds West 537.82 feet, South 39 degrees 10 minutes 25 seconds West 174.14 feet, South 49 degrees 50 minutes 19 seconds East 2,473.08 feet, North 63 degrees 14 minutes 45 seconds East 677.53 feet, North 51 degrees 20 minutes 25 seconds East 480.23 feet, North 38 degrees 58 minutes 39 seconds East 2,675.61 feet and North 38 degrees 56 minutes 35 seconds East 1,558.43 feet to the Northeast corner of said State Lease No. 17381, also being a point on the South line of said State Lease No. 17193 having Coordinates of X = 2,612,822.55 and Y = 95,342.10; thence East 3,105.45 feet along the South line of said State Lease No. 17193 to its Southeast corner, also being a point on the East line of said Block 41 having Coordinates of X = 2,615,928.00 and Y = 95,342.10; thence South 3,352.10 feet along the East line of said Block 41 to a point, also being the Northeast corner of State Lease No. 12966, as amended having Coordinates of X = 2,615,928.00 and Y = 91,990.00; thence along the boundary of said State Lease No. 12966 the following courses: West 2,040.86 feet and South 746.00 feet to a point on the West line of said State Lease No. 12966 having Coordinates of X = 2,613,887.14 and Y = 91,244.00; thence West 8,409.21 feet to the point of beginning, containing approximately **1,326.75 acres**, all as more particularly outlined on a plat on file in the Office of Mineral Resources, Department of Natural Resources. All bearings, distances and coordinates are based on Louisiana Coordinate System of 1927, (North or South Zone).

NOTE: The above description of the Tract nominated for lease has been provided and corrected, where required, exclusively by the nomination party. Any mineral lease selected from this Tract and awarded by the Louisiana State Mineral Board shall be without warranty of any kind,

either express, implied, or statutory, including, but not limited to, the implied warranties of merchantability and fitness for a particular purpose. Should the mineral lease awarded by the Louisiana State Mineral Board be subsequently modified, cancelled or abrogated due to the existence of conflicting leases, operating agreements, private claims or other future obligations or conditions which may affect all or any portion of the leased Tract, it shall not relieve the Lessee of the obligation to pay any bonus due thereon to the Louisiana State Mineral Board, nor shall the Louisiana State Mineral Board be obligated to refund any consideration paid by the Lessor prior to such modification, cancellation, or abrogation, including, but not limited to, bonuses, rentals and royalties.

NOTE: The State of Louisiana does hereby reserve, and this lease shall be subject to, the imprescriptible right of surface use in the nature of a servitude in favor of the Department of Natural Resources, including its Offices and Commissions, for the sole purpose of implementing, constructing, servicing and maintaining approved coastal zone management and/or restoration projects. Utilization of any and all rights derived under this lease by the mineral lessee, its agents, successors or assigns, shall not interfere with nor hinder the reasonable surface use by the Department of Natural Resources, its Offices or Commissions, as herein above reserved.

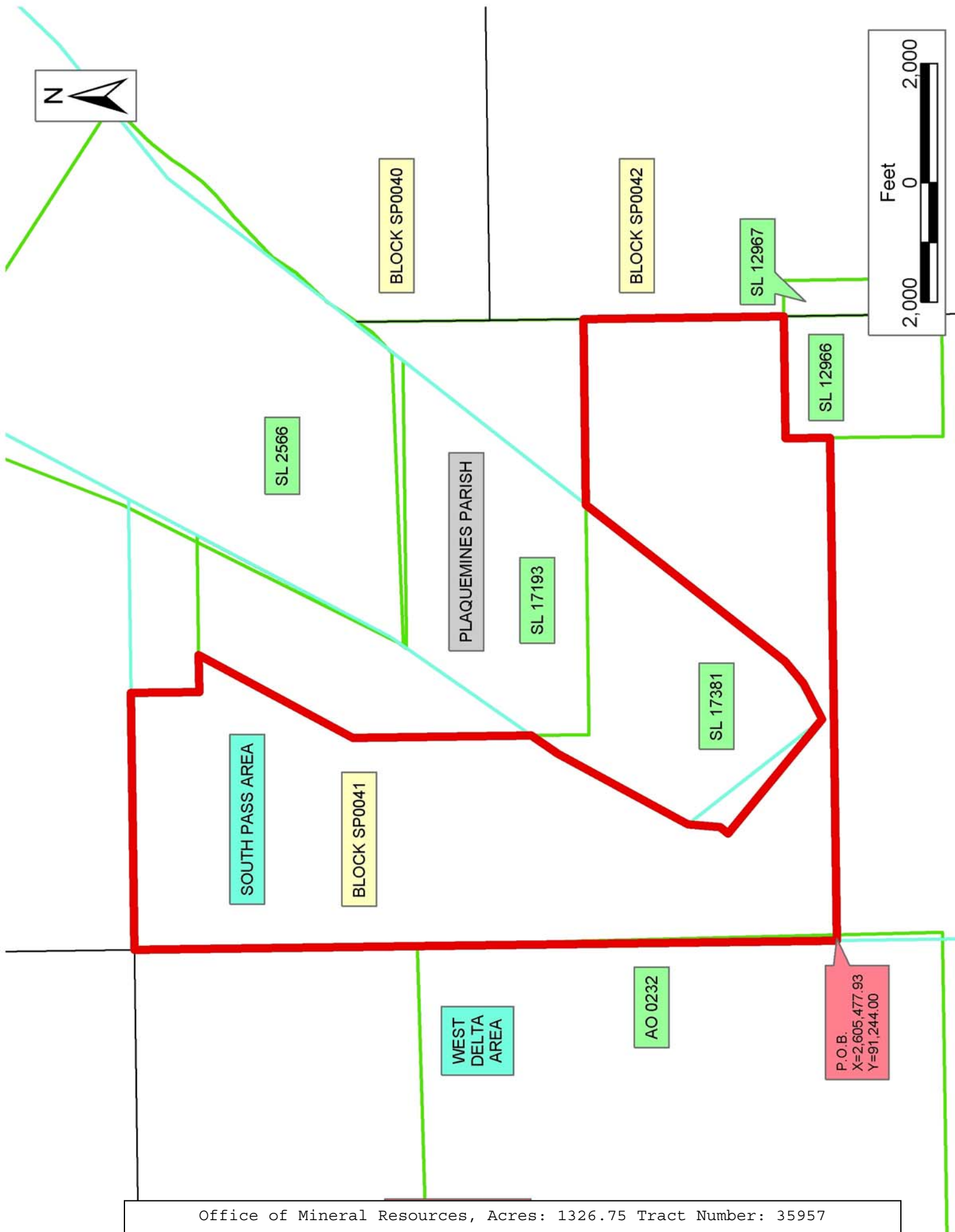
NOTE: It appears, according to our records, that a portion of this Tract is located within the restrictive safety fairway area as set out by the Corps of Engineers, U.S. Army and/or the restrictive anchorage area as set out by the U.S. Coast Guard.

NOTE: The Department of Wildlife and Fisheries has designated certain areas in the coastal waters of the State of Louisiana as Oyster Seed Bed Areas. The exact location of those Seed Bed Areas must be obtained from the Department of Wildlife and Fisheries and any work done under a mineral lease from the State of Louisiana may necessarily be conducted in conformity with the rules and regulations promulgated by the said Department of Wildlife and Fisheries for Oyster Seed Bed Areas.

Applicant: Angelle & Donohue Oil & Gas Properties, Inc.

Bidder	Cash Payment	Price/ Acre	Rental	Oil	Gas	Other





**TRACT 35958 - Portion of Block 41, South Pass Area, Plaquemines Parish, Louisiana**

The beds and bottoms of all water bodies belonging to the State of Louisiana located in that portion of Block 41, South Pass Area, together with any present lands formed by accretion to the shoreline, located in Plaquemines Parish, Louisiana, and not presently under mineral lease on January 14, 2004, the geographical area of which is more fully described as follows: Beginning at a point on the West line of Block 41, South Pass Area, having Coordinates of X = 2,605,477.93 and Y = 91,244.00; thence East 8,409.21 feet to a point on the West line of State Lease No. 12966, as amended having Coordinates of X = 2,613,887.14 and Y = 91,244.00; thence along the boundary of said State Lease No. 12966 the following courses: South 1,894.00 feet and East 2,040.86 feet to the Southeast corner of said State Lease No. 12966, also being a point on the East line of said Block 41 having Coordinates of X = 2,615,928.00 and Y = 89,350.00; thence South 7,200.00 feet along the East line of said Block 41 to its Southeast corner having Coordinates of X = 2,615,928.00 and Y = 82,150.00; thence West 3,900.00 feet along the South line of said Block 41 to the Southeast corner of State Lease No. 15238 having Coordinates of X = 2,612,028.00 and Y = 82,150.00; thence North 674.15 feet on the East line of said State Lease No. 15238 to its Northeast corner and the Southeast corner of State Lease No. 13262, as amended having Coordinates of X = 2,612,028.00 and Y = 82,824.15; thence North 2,925.85 feet on the East line of said State Lease No. 13262 to its Northeast corner and the Southeast corner of State Lease No. 12729, as amended having Coordinates of X = 2,612,028.00 and Y = 85,750.00; thence along the boundary of said State Lease No. 12729 the following courses: North 1,623.34 feet and South 56 degrees 42 minutes 37 seconds West 2,957.60 feet to its Southwest corner and the Northwest corner of said State Lease No. 13262 having Coordinates of X = 2,609,555.72 and Y = 85,750.00; thence South 56 degrees 42 minutes 37 seconds West 1,651.74 feet on the West line of said State Lease No. 13262 to its Southwest corner and the most Northerly corner of said State Lease No. 15238 having Coordinates of X = 2,608,175.02 and Y = 84,843.40; thence along the boundary of said State Lease No. 15238 the following courses: South 56 degrees 42 minutes 37 seconds West 1,269.99 feet and South 43 degrees 48 minutes 08 seconds East 2,766.04 feet to its Southwest corner and a point on the South line of said Block 41 having Coordinates of X = 2,609,028.00 and Y = 82,150.00; thence West 3,550.07 feet along the South line of said Block 41 to its Southwest corner having Coordinates of X = 2,605,477.93 and Y = 82,150.00; thence North 9,094.00 feet along the West line of said Block 41 to the point of beginning, containing approximately **1,729.52 acres**, all as more particularly outlined on a plat on file in the Office of Mineral Resources, Department of Natural Resources. All bearings, distances and coordinates are based on Louisiana Coordinate System of 1927, (North or South Zone).

NOTE: The above description of the Tract nominated for lease has been provided and corrected, where required, exclusively by the nomination party. Any mineral lease selected from this Tract and awarded by the

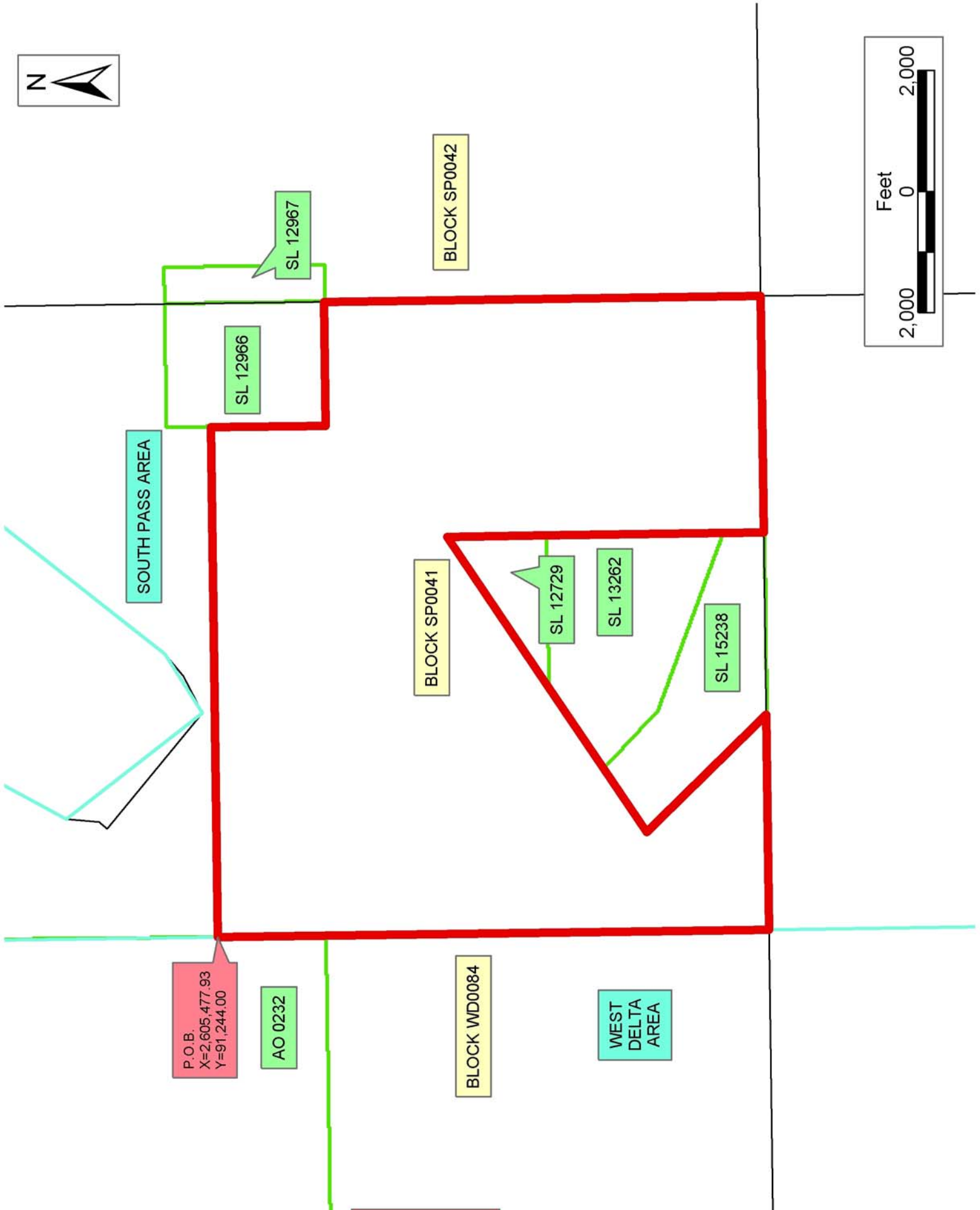
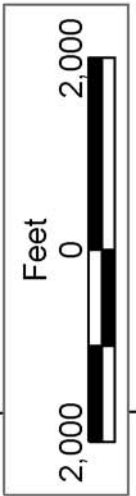
Louisiana State Mineral Board shall be without warranty of any kind, either express, implied, or statutory, including, but not limited to, the implied warranties of merchantability and fitness for a particular purpose. Should the mineral lease awarded by the Louisiana State Mineral Board be subsequently modified, cancelled or abrogated due to the existence of conflicting leases, operating agreements, private claims or other future obligations or conditions which may affect all or any portion of the leased Tract, it shall not relieve the Lessee of the obligation to pay any bonus due thereon to the Louisiana State Mineral Board, nor shall the Louisiana State Mineral Board be obligated to refund any consideration paid by the Lessor prior to such modification, cancellation, or abrogation, including, but not limited to, bonuses, rentals and royalties.

NOTE: The State of Louisiana does hereby reserve, and this lease shall be subject to, the imprescriptible right of surface use in the nature of a servitude in favor of the Department of Natural Resources, including its Offices and Commissions, for the sole purpose of implementing, constructing, servicing and maintaining approved coastal zone management and/or restoration projects. Utilization of any and all rights derived under this lease by the mineral lessee, its agents, successors or assigns, shall not interfere with nor hinder the reasonable surface use by the Department of Natural Resources, its Offices or Commissions, as herein above reserved.

NOTE: It appears, according to our records, that a portion of this Tract is located within the restrictive safety fairway area as set out by the Corps of Engineers, U.S. Army and/or the restrictive anchorage area as set out by the U.S. Coast Guard.

Applicant: Angelle & Donohue Oil & Gas Properties, Inc.

Bidder	Cash Payment	Price/ Acre	Rental	Oil	Gas	Other



**TRACT 35959 - Portion of Block 84, West Delta Area, Plaquemines Parish, Louisiana**

The beds and bottoms of all water bodies belonging to the State of Louisiana located in that portion of Block 84, West Delta Area, together with any present lands formed by accretion to the shoreline, located in Plaquemines Parish, Louisiana, and not presently under mineral lease on January 14, 2004, the geographical area of which is more fully described as follows: Beginning at a point on the West line of Block 84, West Delta Area, having Coordinates of X = 2,595,027.93 and Y = 89,350.00; thence East 2,000.00 feet to the Southwest corner of AO 232 having Coordinates of X = 2,597,027.93 and Y = 89,350.00; thence East 8,450.00 feet along the South line of said AO 232 to its Southeast corner, also being a point on the East line of said Block 84 having Coordinates of X = 2,605,477.93 and Y = 89,350.00; thence South 7,200.00 feet along the East line of said Block 84 to its Southeast corner having Coordinates of X = 2,605,477.93 and Y = 82,150.00; thence West 10,450.00 feet along the South line of said Block 84 to its Southwest corner having Coordinates of X = 2,595,027.93 and Y = 82,150.00; thence North 7,200.00 feet along the West line of said Block 84 to the point of beginning, containing approximately **1,727.27 acres**, all as more particularly outlined on a plat on file in the Office of Mineral Resources, Department of Natural Resources. All bearings, distances and coordinates are based on Louisiana Coordinate System of 1927, (North or South Zone).

NOTE: The above description of the Tract nominated for lease has been provided and corrected, where required, exclusively by the nomination party. Any mineral lease selected from this Tract and awarded by the Louisiana State Mineral Board shall be without warranty of any kind, either express, implied, or statutory, including, but not limited to, the implied warranties of merchantability and fitness for a particular purpose. Should the mineral lease awarded by the Louisiana State Mineral Board be subsequently modified, cancelled or abrogated due to the existence of conflicting leases, operating agreements, private claims or other future obligations or conditions which may affect all or any portion of the leased Tract, it shall not relieve the Lessee of the obligation to pay any bonus due thereon to the Louisiana State Mineral Board, nor shall the Louisiana State Mineral Board be obligated to refund any consideration paid by the Lessor prior to such modification, cancellation, or abrogation, including, but not limited to, bonuses, rentals and royalties.

NOTE: The State of Louisiana does hereby reserve, and this lease shall be subject to, the imprescriptible right of surface use in the nature of a servitude in favor of the Department of Natural Resources, including its Offices and Commissions, for the sole purpose of implementing, constructing, servicing and maintaining approved coastal zone management and/or restoration projects. Utilization of any and all rights derived under this lease by the mineral lessee, its agents, successors or assigns, shall not interfere with nor hinder the reasonable surface use by the

Department of Natural Resources, its Offices or Commissions, as herein above reserved.

NOTE: It appears, according to our records, that a portion of this Tract is located within the restrictive safety fairway area as set out by the Corps of Engineers, U.S. Army and/or the restrictive anchorage area as set out by the U.S. Coast Guard.

Applicant: Angelle & Donohue Oil & Gas Properties, Inc.

Bidder	Cash Payment	Price/ Acre	Rental	Oil	Gas	Other

