

**TRACT 35940 - Portion of Block 28, Chandeleur Area, St. Bernard Parish, Louisiana**

The beds and bottoms of all water bodies belonging to the State of Louisiana located in that portion of Block 28, Chandeleur Area, together with any present lands formed by accretion to the shoreline, located in St. Bernard Parish, Louisiana, and not presently under mineral lease on January 14, 2004, the geographical area of which is more fully described as follows: Beginning at the Northwest corner of Block 28, Chandeleur Area, having Coordinates of X = 2,782,850.00 and Y = 396,088.05; thence East 7,900.00 feet along the North line of said Block 28 to the most Southerly Southwest corner of State Lease No. 9680, as amended, having Coordinates of X = 2,790,750.00 and Y = 396,088.05; thence East 6,858.05 feet along the North line of said Block 28 to its Northeast corner, said corner also being the Southeast corner of said State Lease No. 9680, as amended, having Coordinates of X = 2,797,608.05 and Y = 396,088.05; thence South 4,436.34 feet along the East line of said Block 28 to a point on the Three Mile Decree line derived from the June 16, 1975 Decree in the United States vs. Louisiana No. 9 Original, having Coordinates of X = 2,797,608.05 and Y = 391,651.71; thence South 30 degrees 28 minutes 24 seconds West 3,418.99 feet along said Three Mile Decree line to a point having Coordinates of X = 2,795,874.15 and Y = 388,705.00; thence West 13,024.15 feet to a point on the West line of said Block 28 having Coordinates of X = 2,782,850.00 and Y = 388,705.00; thence North 7,383.05 feet along the West line of said Block 28 to the point of beginning, containing **2,442.72 acres, LESS AND EXCEPT** that portion thereof, if any, lying seaward of the line three nautical miles from the coast line of Louisiana, as said three mile line has been decreed by the Supreme Court of the United States, as determined by a Special Master appointed therein, in litigation styled **United States v. State of Louisiana et al No. 9 Original**, in 1975, all as more particularly outlined on a plat in the Office of Mineral Resources, Department of Natural Resources. All bearings, distances and coordinates are based on the Louisiana Coordinate System of 1927, (South Zone).

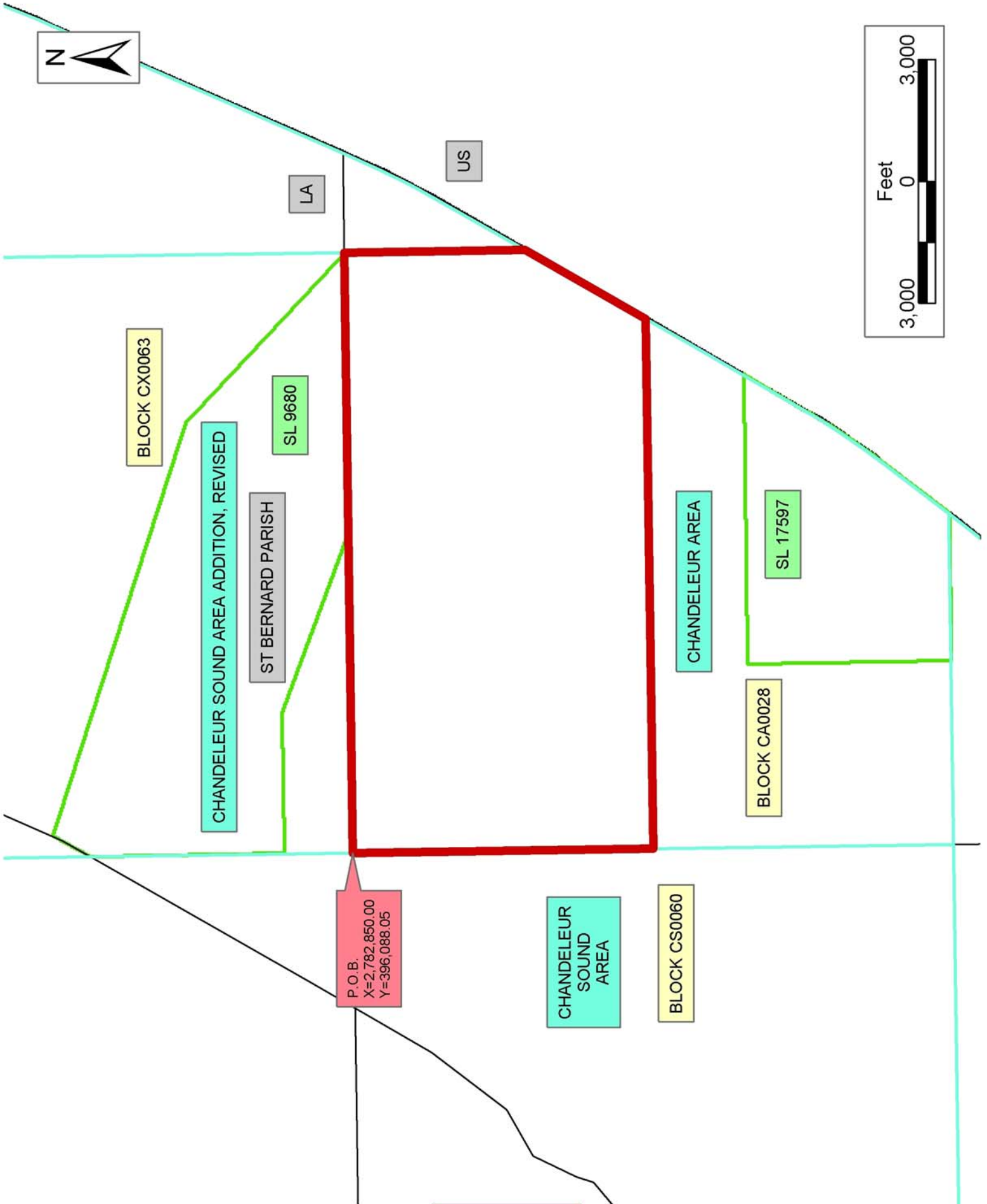
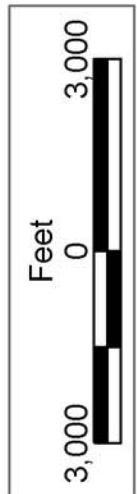
NOTE: The above description of the Tract nominated for lease has been provided and corrected, where required, exclusively by the nomination party. Any mineral lease selected from this Tract and awarded by the Louisiana State Mineral Board shall be without warranty of any kind, either express, implied, or statutory, including, but not limited to, the implied warranties of merchantability and fitness for a particular purpose. Should the mineral lease awarded by the Louisiana State Mineral Board be subsequently modified, cancelled or abrogated due to the existence of conflicting leases, operating agreements, private claims or other future obligations or conditions which may affect all or any portion of the leased Tract, it shall not relieve the Lessee of the obligation to pay any bonus due thereon to the Louisiana State Mineral Board, nor shall the Louisiana State Mineral Board be obligated to refund any consideration paid by the Lessor prior to such modification, cancellation, or abrogation, including, but not limited to, bonuses, rentals and royalties.

NOTE: The Office of Mineral Resources will require a minimum bonus of \$190 per acre and a minimum royalty of 22%.

NOTE: The State of Louisiana does hereby reserve, and this lease shall be subject to, the imprescriptible right of surface use in the nature of a servitude in favor of the Department of Natural Resources, including its Offices and Commissions, for the sole purpose of implementing, constructing, servicing and maintaining approved coastal zone management and/or restoration projects. Utilization of any and all rights derived under this lease by the mineral lessee, its agents, successors or assigns, shall not interfere with nor hinder the reasonable surface use by the Department of Natural Resources, its Offices or Commissions, as herein above reserved.

Applicant: Encaladia Petroleum, LLC

Bidder	Cash Payment	Price/Acre	Rental	Oil	Gas	Other



P.O.B.  
X=2,782,850.00  
Y=396,088.05

**TRACT 35941 - Portion of Block 60, Chandeleur Sound Area, St. Bernard Parish, Louisiana**

The beds and bottoms of all water bodies belonging to the State of Louisiana located in that portion of Block 60, Chandeleur Sound Area, together with any present lands formed by accretion to the shoreline, located in St. Bernard Parish, Louisiana, and not presently under mineral lease on January 14, 2004, the geographical area of which is more fully described as follows: Beginning at the Northeast corner of Block 60, Chandeleur Sound Area, having Coordinates of X = 2,782,850.00 and Y = 396,080.00; thence South 7,375.00 feet along the East line of said Block 60 to a point having Coordinates of X = 2,782,850.00 and Y = 388,705.00; thence West 9,503.03 feet to a point on the Coastline derived from the June 16, 1975 Decree in the United States vs. Louisiana No. 9 Original, having Coordinates of X = 2,773,346.97 and Y = 388,705.00; thence along said Coastline the following courses: North 31 degrees 31 minutes 26 seconds East 1,195.42 feet to a point having Coordinates of X = 2,773,972.00 and Y = 389,724.00; North 50 degrees 48 minutes 49 seconds East 900.54 feet to a point having Coordinates of X = 2,774,670.00 and Y = 390,293.00; North 19 degrees 24 minutes 17 seconds East 448.48 feet to a point having Coordinates of X = 2,774,819.00 and Y = 390,716.00; North 26 degrees 24 minutes 46 seconds East 1,177.97 feet to a point having Coordinates of X = 2,775,343.00 and Y = 391,771.00; North 61 degrees 04 minutes 54 seconds East 1,306.97 feet to a point having Coordinates of X = 2,776,487.00 and Y = 392,403.00; North 38 degrees 14 minutes 21 seconds East 2,318.46 feet to a point having Coordinates of X = 2,777,922.00 and Y = 394,224.00 and North 30 degrees 59 minutes 02 seconds East 2,164.91 feet to a point on the North line of said Block 60 having Coordinates of X = 2,779,036.49 and Y = 396,080.00; thence East 3,813.51 feet along the North line of said Block 60 to the point of beginning, containing approximately **1,116.13 acres**, all as more particularly outlined on a plat on file in the Office of Mineral Resources, Department of Natural Resources. All bearings, distances and coordinates are based on Louisiana Coordinate System of 1927, (North or South Zone).

NOTE: The above description of the Tract nominated for lease has been provided and corrected, where required, exclusively by the nomination party. Any mineral lease selected from this Tract and awarded by the Louisiana State Mineral Board shall be without warranty of any kind, either express, implied, or statutory, including, but not limited to, the implied warranties of merchantability and fitness for a particular purpose. Should the mineral lease awarded by the Louisiana State Mineral Board be subsequently modified, cancelled or abrogated due to the existence of conflicting leases, operating agreements, private claims or other future obligations or conditions which may affect all or any portion of the leased Tract, it shall not relieve the Lessee of the obligation to pay any bonus due thereon to the Louisiana State Mineral Board, nor shall the Louisiana State Mineral Board be obligated to refund any consideration paid by the Lessor prior to such modification, cancellation, or abrogation, including, but not limited to, bonuses, rentals and royalties.

NOTE: The Office of Mineral Resources will require a minimum bonus of \$190 per acre and a minimum royalty of 22%.

NOTE: The State of Louisiana does hereby reserve, and this lease shall be subject to, the imprescriptible right of surface use in the nature of a servitude in favor of the Department of Natural Resources, including its Offices and Commissions, for the sole purpose of implementing, constructing, servicing and maintaining approved coastal zone management and/or restoration projects. Utilization of any and all rights derived under this lease by the mineral lessee, its agents, successors or assigns, shall not interfere with nor hinder the reasonable surface use by the Department of Natural Resources, its Offices or Commissions, as herein above reserved.

Applicant: Bt Exploration, Lp

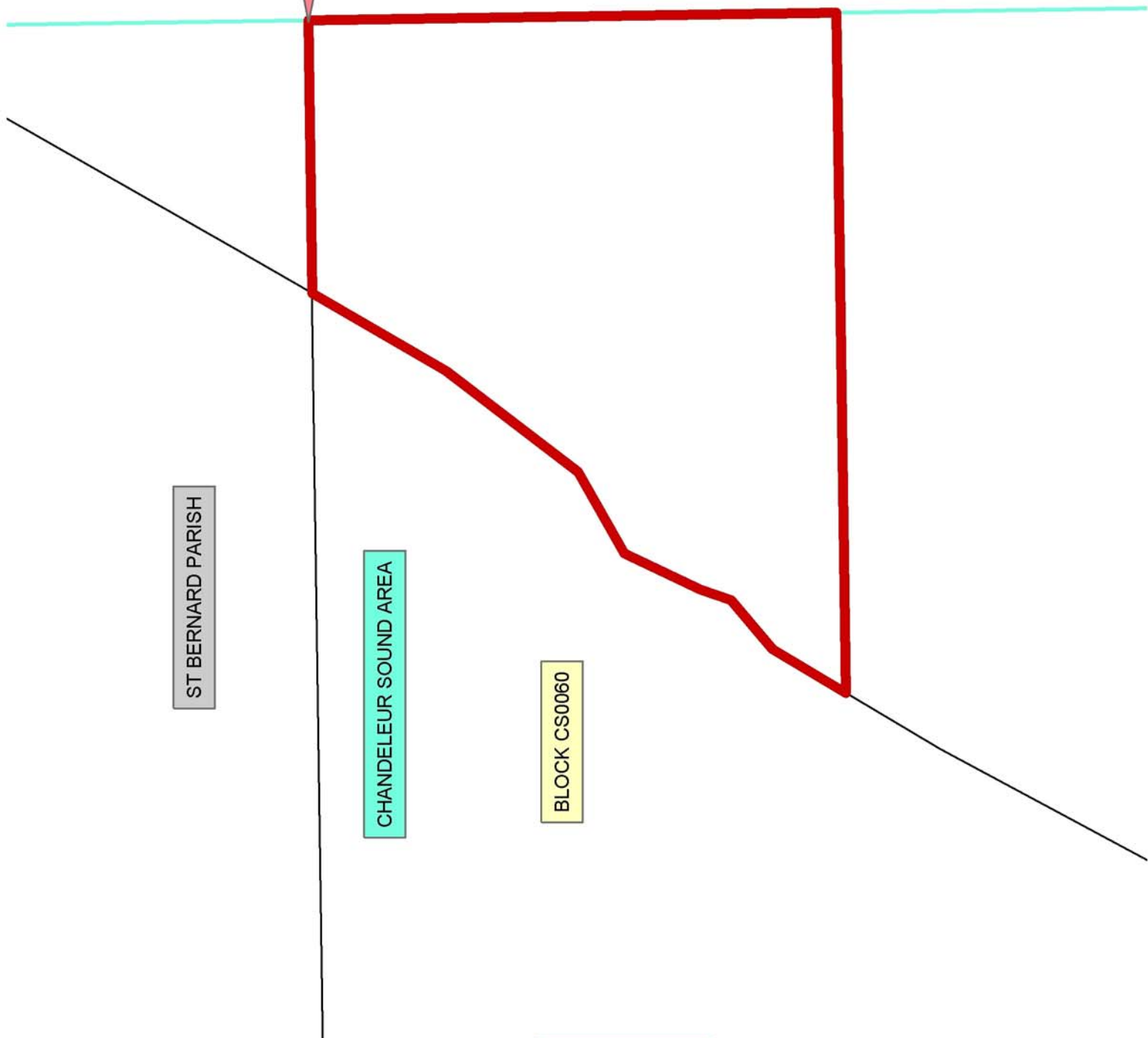
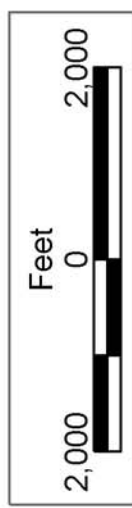
Bidder	Cash Payment	Price/Acre	Rental	Oil	Gas	Other



P.O.B.  
X=2,782,850.00  
Y=396,080.00

CHANDELEUR AREA

BLOCK CA0028



ST BERNARD PARISH

CHANDELEUR SOUND AREA

BLOCK CS0060

**TRACT 35942 - Portion of Block 60, Chandeleur Sound Area, and Block 6, Main Pass Area, Revised, St. Bernard Parish, Louisiana**

The beds and bottoms of all water bodies belonging to the State of Louisiana located in that portion of Block 60, Chandeleur Sound Area, and Block 6, Main Pass Area, Revised, together with any present lands formed by accretion to the shoreline, located in St. Bernard Parish, Louisiana, and not presently under mineral lease on January 14, 2004, the geographical area of which is more fully described as follows: Beginning at the Northwest corner of State Lease No. 16262 having Coordinates of X = 2,770,200.00 and Y = 378,782.62; thence North 2,547.38 feet to a point on the North line of Block 6, Main Pass Area, Revised, said point also being a point on the South line of Block 60, Chandeleur Sound Area, having Coordinates of X = 2,770,200.00 and Y = 381,330.00; thence North 2,039.44 feet to a point on the Coastline derived from the June 16, 1975 Decree in the United States vs. Louisiana No. 9 Original, having Coordinates of X = 2,770,200.00 and Y = 383,369.44; thence along said Coastline the following courses: North 37 degrees 37 minutes 46 seconds East 653.51 feet to a point having Coordinates of X = 2,770,599.00 and Y = 383,887.00; North 28 degrees 59 minutes 47 seconds East 4,006.17 feet to a point having Coordinates of X = 2,772,541.00 and Y = 387,391.00 and North 31 degrees 31 minutes 26 seconds East 1,541.49 feet to a point having Coordinates of X = 2,773,346.97 and Y = 388,705.00; thence East 6,853.03 feet to a point having Coordinates of X = 2,780,200.00 and Y = 388,705.00; thence South 7,375.00 feet to a point on the South line of said Block 60, said point also being on the North line of said Block 6, having Coordinates of X = 2,780,200.00 and Y = 381,330.00; thence South 2,547.38 feet to the Northeast corner of State Lease No. 17028 having Coordinates of X = 2,780,200.00 and Y = 378,782.62; thence West 5,029.33 feet along the North line of said State Lease No. 17028 to its Northwest corner, said corner also being the Northeast corner of said State Lease No. 16262, having Coordinates of X = 2,775,170.67 and Y = 378,782.62; thence West 4,970.67 feet along the North line of said State Lease No. 16262 to the point of beginning, containing approximately **2,082.52 acres**, all as more particularly outlined on a plat on file in the Office of Mineral Resources, Department of Natural Resources. All bearings, distances and coordinates are based on Louisiana Coordinate System of 1927, (North or South Zone).

NOTE: The above description of the Tract nominated for lease has been provided and corrected, where required, exclusively by the nomination party. Any mineral lease selected from this Tract and awarded by the Louisiana State Mineral Board shall be without warranty of any kind, either express, implied, or statutory, including, but not limited to, the implied warranties of merchantability and fitness for a particular purpose. Should the mineral lease awarded by the Louisiana State Mineral Board be subsequently modified, cancelled or abrogated due to the existence of conflicting leases, operating agreements, private claims or other future obligations or conditions which may affect all or any portion of the leased Tract, it shall not relieve the Lessee of the obligation to

pay any bonus due thereon to the Louisiana State Mineral Board, nor shall the Louisiana State Mineral Board be obligated to refund any consideration paid by the Lessor prior to such modification, cancellation, or abrogation, including, but not limited to, bonuses, rentals and royalties.

NOTE: The Office of Mineral Resources will require a minimum bonus of \$190 per acre and a minimum royalty of 22%.

NOTE: The State of Louisiana does hereby reserve, and this lease shall be subject to, the imprescriptible right of surface use in the nature of a servitude in favor of the Department of Natural Resources, including its Offices and Commissions, for the sole purpose of implementing, constructing, servicing and maintaining approved coastal zone management and/or restoration projects. Utilization of any and all rights derived under this lease by the mineral lessee, its agents, successors or assigns, shall not interfere with nor hinder the reasonable surface use by the Department of Natural Resources, its Offices or Commissions, as herein above reserved.

Applicant: Bt Exploration, Lp

Bidder	Cash Payment	Price/Acre	Rental	Oil	Gas	Other





CHANDELEUR SOUND AREA

ST BERNARD PARISH

BLOCK CS0060

BLOCK MP0006

MAIN PASS AREA, REVISED

SL 16262

P.O.B.  
X=2,770,200.00  
Y=378,782.62

**TRACT 35943 - Portion of Block 60, Chandeleur Sound Area, Blocks 6, and 91, Main Pass Area, Revised, and Block 28, Chandeleur Area, St. Bernard Parish, Louisiana**

The beds and bottoms of all water bodies belonging to the State of Louisiana located in that portion of Block 60, Chandeleur Sound Area, Blocks 6, and 91, Main Pass Area, Revised, and Block 28, Chandeleur Area, together with any present lands formed by accretion to the shoreline, located in St. Bernard Parish, Louisiana, and not presently under mineral lease on January 14, 2004, the geographical area of which is more fully described as follows: Beginning at a point within Block 6, Main Pass Area, Revised, having Coordinates of X = 2,780,200.00 and Y = 378,782.62; thence North 2,547.38 feet to a point on the North line of said Block 6, said point also being a point on the South line of Block 60, Chandeleur Sound Area, having Coordinates of X = 2,780,200.00 and Y = 381,330.00; thence North 7,375.00 feet to a point having Coordinates of X = 2,780,200.00 and Y = 388,705.00; thence East 2,650.00 feet to a point on the East line of said Block 60, said point also being on the West line of Block 28, Chandeleur Area, having Coordinates of X = 2,782,850.00 and Y = 388,705.00; thence East 4,500.00 feet to a point having Coordinates of X = 2,787,350.00 and Y = 388,705.00; thence South 2,375.00 feet to the Northwest corner of State Lease No. 17597 having Coordinates of X = 2,787,350.00 and Y = 386,330.00; thence South 5,000.00 feet along the West line of said State Lease No. 17597 to its Southwest corner, said corner also being a point on the North line of Block 91, Main Pass Area, Revised, having Coordinates of X = 2,787,350.00 and Y = 381,330.00; thence South 4,846.76 feet to a point on the Three Mile Decree line derived from the June 16, 1975 Decree in the United States vs. Louisiana No. 9 Original, having Coordinates of X = 2,787,350.00 and Y = 376,483.24; thence along said Three Mile Decree line the following courses: South 28 degrees 59 minutes 35 seconds West 1,644.30 feet to a point having Coordinates of X = 2,786,553.00 and Y = 375,045.00 and along an arc with a center of X = 2,770,599.00 and Y = 383,887.00 and a radius of 18,240.60 feet to a point having Coordinates of X = 2,785,662.00 and Y = 373,600.00; thence West 2,812.00 feet to a point on the West line of said Block 91, said point also being a point on the East line of said Block 6, having Coordinates of X = 2,782,850.00 and Y = 373,600.00; thence West 4,000.00 feet to a point having Coordinates of X = 2,778,850.00 and Y = 373,600.00; thence North 1,730.00 feet to a point having Coordinates of X = 2,778,850.00 and Y = 375,330.00; East 1,350.00 feet to a point having Coordinates of X = 2,780,200.00 and Y = 375,330.00 and North 3,452.62 feet to the point of beginning, containing approximately **2,479.11 acres, LESS AND EXCEPT** that portion thereof, if any, lying seaward of the line three nautical miles from the coast line of Louisiana, as said three mile line has been decreed by the Supreme Court of the United States, as determined by a Special Master appointed therein, in litigation styled **United States v. State of Louisiana et al No. 9 Original**, in 1975, all as more particularly outlined on a plat in the Office of Mineral Resources, Department of Natural Resources. All bearings, distances and coordinates are based on the Louisiana Coordinate System of 1927, (South Zone).

NOTE: The above description of the Tract nominated for lease has been provided and corrected, where required, exclusively by the nomination party. Any mineral lease selected from this Tract and awarded by the Louisiana State Mineral Board shall be without warranty of any kind, either express, implied, or statutory, including, but not limited to, the implied warranties of merchantability and fitness for a particular purpose. Should the mineral lease awarded by the Louisiana State Mineral Board be subsequently modified, cancelled or abrogated due to the existence of conflicting leases, operating agreements, private claims or other future obligations or conditions which may affect all or any portion of the leased Tract, it shall not relieve the Lessee of the obligation to pay any bonus due thereon to the Louisiana State Mineral Board, nor shall the Louisiana State Mineral Board be obligated to refund any consideration paid by the Lessor prior to such modification, cancellation, or abrogation, including, but not limited to, bonuses, rentals and royalties.

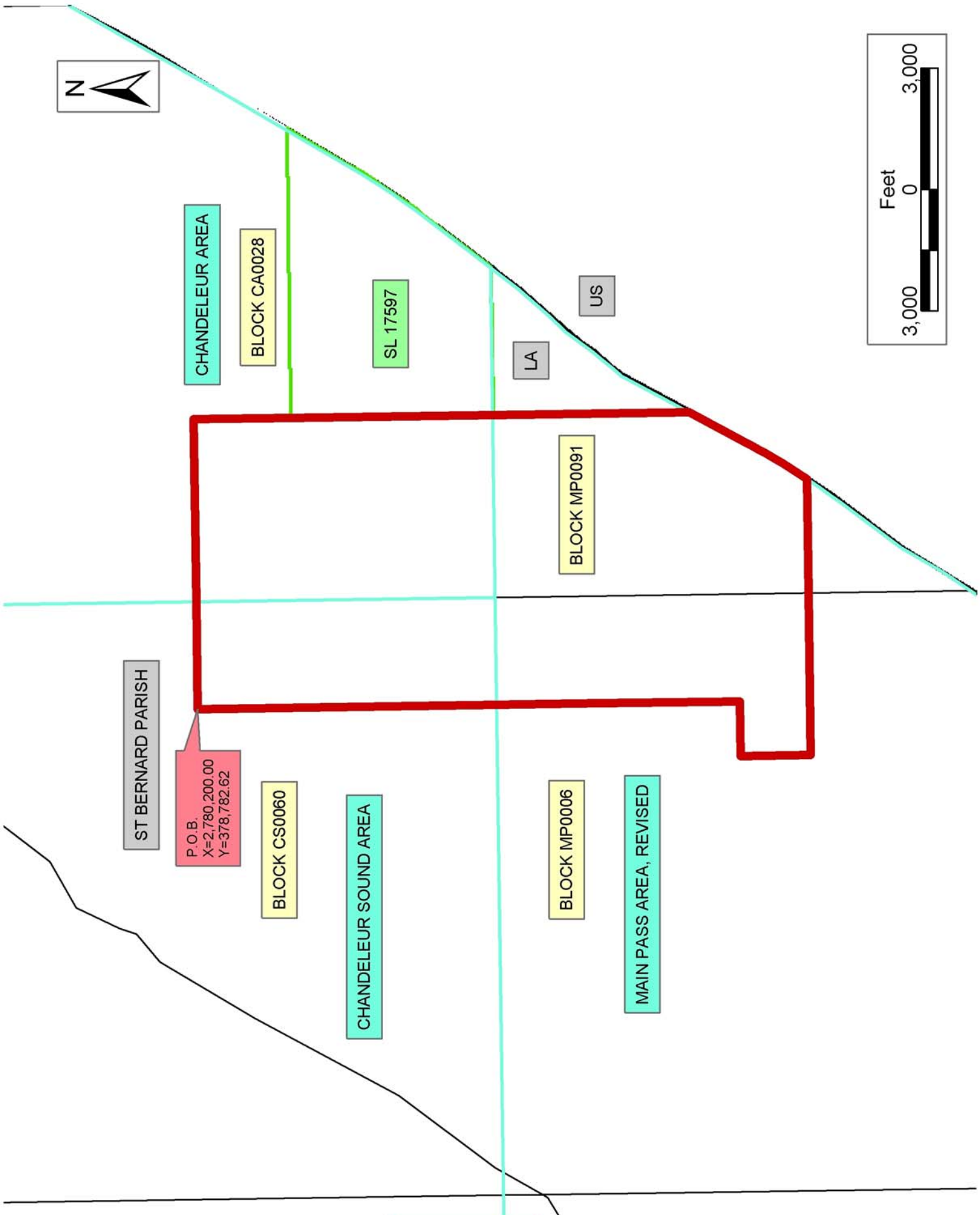
NOTE: The Office of Mineral Resources will require a minimum bonus of \$190 per acre and a minimum royalty of 22%.

NOTE: The State of Louisiana does hereby reserve, and this lease shall be subject to, the imprescriptible right of surface use in the nature of a servitude in favor of the Department of Natural Resources, including its Offices and Commissions, for the sole purpose of implementing, constructing, servicing and maintaining approved coastal zone management and/or restoration projects. Utilization of any and all rights derived under this lease by the mineral lessee, its agents, successors or assigns, shall not interfere with nor hinder the reasonable surface use by the Department of Natural Resources, its Offices or Commissions, as herein above reserved.

NOTE: The Department of Wildlife and Fisheries has designated certain areas in the coastal waters of the State of Louisiana as Oyster Seed Bed Areas. The exact location of those Seed Bed Areas must be obtained from the Department of Wildlife and Fisheries and any work done under a mineral lease from the State of Louisiana may necessarily be conducted in conformity with the rules and regulations promulgated by the said Department of Wildlife and Fisheries for Oyster Seed Bed Areas.

Applicant: Bt Exploration, Lp

Bidder	Cash Payment	Price/Acre	Rental	Oil	Gas	Other



**TRACT 35944 - Portion of Block 60, Chandeleur Sound Area, Blocks 5, and 6, Main Pass Area, Revised, St. Bernard Parish, Louisiana**

The beds and bottoms of all water bodies belonging to the State of Louisiana located in that portion of Block 60, Chandeleur Sound Area, Blocks 5, and 6, Main Pass Area, Revised, together with any present lands formed by accretion to the shoreline, located in St. Bernard Parish, Louisiana, and not presently under mineral lease on January 14, 2004, the geographical area of which is more fully described as follows: Beginning at a point within Block 5, Main Pass Area, Revised, said point also being on the Coastline derived from the June 16, 1975 Decree in the United States vs. Louisiana No. 9 Original, having Coordinates of X = 2,762,700.00 and Y = 373,575.54; thence along said Coastline the following courses: North 36 degrees 50 minutes 42 seconds East 6,183.57 feet to a point having Coordinates of X = 2,766,408.00 and Y = 378,524.00; North 29 degrees 12 minutes 23 seconds East 1,319.79 feet to a point having Coordinates of X = 2,767,052.00 and Y = 379,676.00; North 59 degrees 52 minutes 42 seconds East 1,131.84 feet to a point having Coordinates of X = 2,768,031.00 and Y = 380,244.00; North 30 degrees 13 minutes 33 seconds East 137.07 feet to a point on the East line of said Block 5, said point also being on the West line of Block 6, Main Pass Area, Revised, having Coordinates of X = 2,768,100.00 and Y = 380,362.43; North 30 degrees 13 minutes 33 seconds East 1,119.81 feet to a point on the North line of said Block 6, said point also being a point on the South line of Block 60, Chandeleur Sound Area, having Coordinates of X = 2,768,663.72 and Y = 381,330.00; North 30 degrees 13 minutes 33 seconds East 221.05 feet to a point having Coordinates of X = 2,768,775.00 and Y = 381,521.00 and North 37 degrees 37 minutes 46 seconds East 2,333.96 feet to a point having Coordinates of X = 2,770,200.00 and Y = 383,369.44; thence South 2,039.44 feet to a point on the South line of said Block 60, said point also being a point on the North line of said Block 6, having Coordinates of X = 2,770,200.00 and Y = 381,330.00; thence South 2,547.38 feet to the Northwest corner of State Lease No. 16262 having Coordinates of X = 2,770,200.00 and Y = 378,782.62; thence South 5,207.08 feet along the West line of said State Lease No. 16262 to a point having Coordinates of X = 2,770,200.00 and Y = 373,575.54; thence West 2,100.00 feet to a point on the West line of said Block 6, said point also being a point on the East line of said Block 5, having Coordinates of X = 2,768,100.00 and Y = 373,575.54; thence West 5,400.00 feet to the point of beginning, containing approximately **850.74 acres**, all as more particularly outlined on a plat on file in the Office of Mineral Resources, Department of Natural Resources. All bearings, distances and coordinates are based on Louisiana Coordinate System of 1927, (North or South Zone).

NOTE: The above description of the Tract nominated for lease has been provided and corrected, where required, exclusively by the nomination party. Any mineral lease selected from this Tract and awarded by the Louisiana State Mineral Board shall be without warranty of any kind, either express, implied, or statutory, including, but not limited to, the implied warranties of merchantability and fitness for a particular

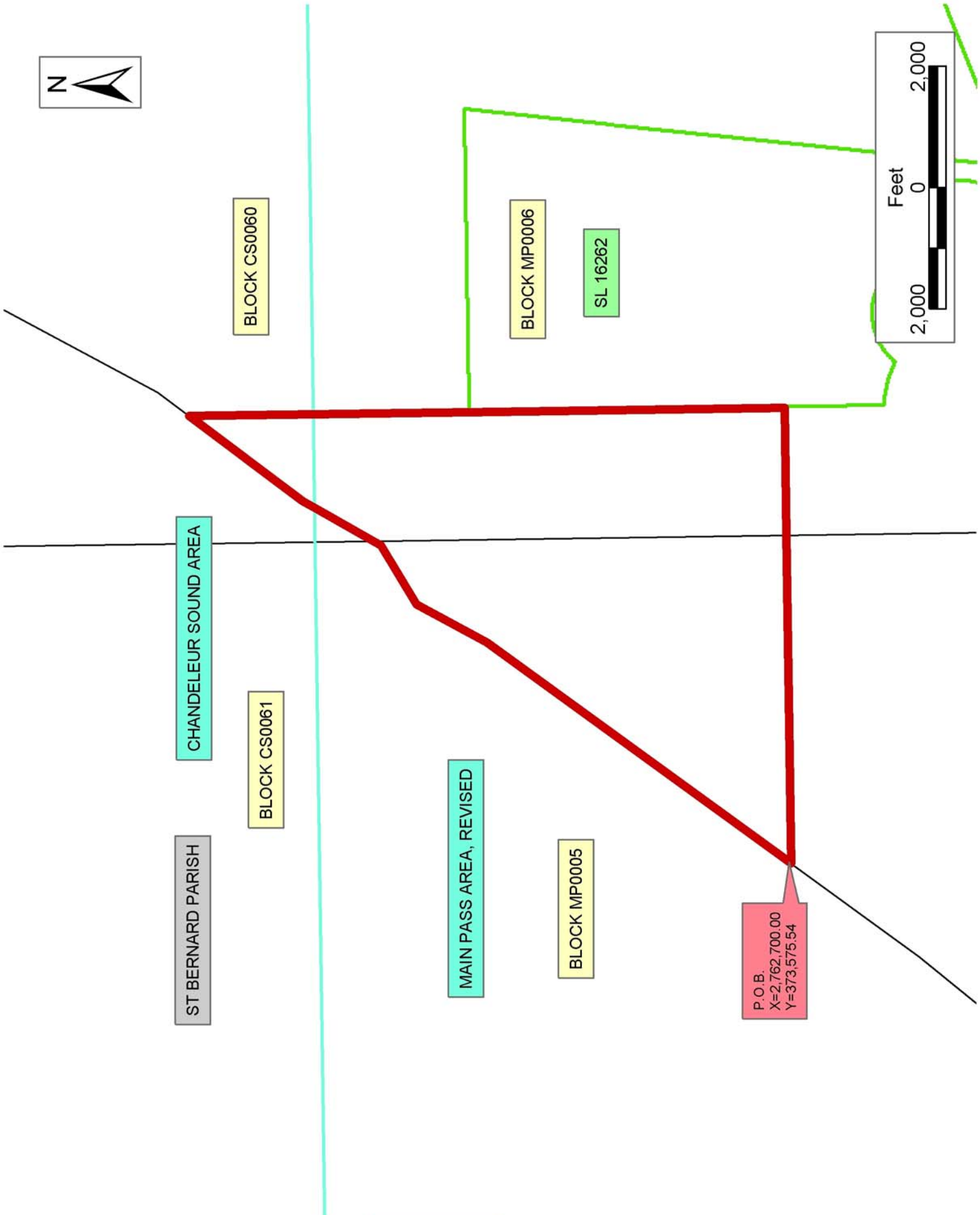
purpose. Should the mineral lease awarded by the Louisiana State Mineral Board be subsequently modified, cancelled or abrogated due to the existence of conflicting leases, operating agreements, private claims or other future obligations or conditions which may affect all or any portion of the leased Tract, it shall not relieve the Lessee of the obligation to pay any bonus due thereon to the Louisiana State Mineral Board, nor shall the Louisiana State Mineral Board be obligated to refund any consideration paid by the Lessor prior to such modification, cancellation, or abrogation, including, but not limited to, bonuses, rentals and royalties.

NOTE: The Office of Mineral Resources will require a minimum bonus of \$190 per acre and a minimum royalty of 22%.

NOTE: The State of Louisiana does hereby reserve, and this lease shall be subject to, the imprescriptible right of surface use in the nature of a servitude in favor of the Department of Natural Resources, including its Offices and Commissions, for the sole purpose of implementing, constructing, servicing and maintaining approved coastal zone management and/or restoration projects. Utilization of any and all rights derived under this lease by the mineral lessee, its agents, successors or assigns, shall not interfere with nor hinder the reasonable surface use by the Department of Natural Resources, its Offices or Commissions, as herein above reserved.

Applicant: Bt Exploration, Lp

Bidder	Cash Payment	Price/Acre	Rental	Oil	Gas	Other





**TRACT 35945 - Portion of Blocks 5, and 6, Main Pass Area, Revised, St. Bernard Parish, Louisiana**

The beds and bottoms of all water bodies belonging to the State of Louisiana located in that portion of Blocks 5, and 6, Main Pass Area, Revised, together with any present lands formed by accretion to the shoreline, located in St. Bernard Parish, Louisiana, and not presently under mineral lease on January 14, 2004, the geographical area of which is more fully described as follows: Beginning at a point on the South line of Block 5, Main Pass Area, Revised, said point also being on the Coastline derived from the June 16, 1975 Decree in the United States vs. Louisiana No. 9 Original, having Coordinates of X = 2,757,292.59 and Y = 366,580.00; thence along said Coastline the following courses: North 38 degrees 35 minutes 46 seconds East 276.37 feet to a point having Coordinates of X = 2,757,465.00 and Y = 366,796.00; North 30 degrees 30 minutes 11 seconds East 1,237.23 feet to a point having Coordinates of X = 2,758,093.00 and Y = 367,862.00; North 39 degrees 59 minutes 57 seconds East 4,737.26 feet to a point having Coordinates of X = 2,761,138.00 and Y = 371,491.00 and North 36 degrees 50 minutes 42 seconds East 2,604.84 feet to a point having Coordinates of X = 2,762,700.00 and Y = 373,575.54; thence East 5,400.00 feet to a point on the East line of said Block 5, said point also being point on the West line of Block 6, Main Pass Area, Revised, having Coordinates of X = 2,768,100.00 and Y = 373,575.54; thence East 2,100.00 feet to a point on the Western boundary of State Lease No. 16262 having Coordinates of X = 2,770,200.00 and Y = 373,575.54; thence South 1,616.67 feet along the Western boundary of said State Lease No. 16262 to its most Westerly Southwest corner having Coordinates of X = 2,770,200.00 and Y = 371,958.87; thence South 5,378.87 feet to a point on the South line of said Block 6 having Coordinates of X = 2,770,200.00 and Y = 366,580.00; thence West 2,100.00 feet along the South line of said Block 6 to its Southwest corner, said corner also being the Southeast corner of said Block 5, having Coordinates of X = 2,768,100.00 and Y = 366,580.00; thence West 10,807.41 feet along the South line of said Block 5 to the point of beginning, containing **1,645.63 acres**, all as more particularly outlined on a plat on file in the Office of Mineral Resources, Department of Natural Resources. All bearings, distances and coordinates are based on Louisiana Coordinate System of 1927, (North or South Zone).

NOTE: The above description of the Tract nominated for lease has been provided and corrected, where required, exclusively by the nomination party. Any mineral lease selected from this Tract and awarded by the Louisiana State Mineral Board shall be without warranty of any kind, either express, implied, or statutory, including, but not limited to, the implied warranties of merchantability and fitness for a particular purpose. Should the mineral lease awarded by the Louisiana State Mineral Board be subsequently modified, cancelled or abrogated due to the existence of conflicting leases, operating agreements, private claims or other future obligations or conditions which may affect all or any portion of the leased Tract, it shall not relieve the Lessee of the obligation to pay any bonus due thereon to the Louisiana State Mineral Board, nor shall

the Louisiana State Mineral Board be obligated to refund any consideration paid by the Lessor prior to such modification, cancellation, or abrogation, including, but not limited to, bonuses, rentals and royalties.

NOTE: The Office of Mineral Resources will require a minimum bonus of \$190 per acre and a minimum royalty of 22%.

NOTE: The State of Louisiana does hereby reserve, and this lease shall be subject to, the imprescriptible right of surface use in the nature of a servitude in favor of the Department of Natural Resources, including its Offices and Commissions, for the sole purpose of implementing, constructing, servicing and maintaining approved coastal zone management and/or restoration projects. Utilization of any and all rights derived under this lease by the mineral lessee, its agents, successors or assigns, shall not interfere with nor hinder the reasonable surface use by the Department of Natural Resources, its Offices or Commissions, as herein above reserved.

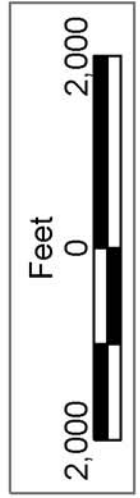
Applicant: Encaladia Petroleum, LLC

Bidder	Cash Payment	Price/Acre	Rental	Oil	Gas	Other



SL 16262

BLOCK MP0006



MAIN PASS AREA, REVISED

ST BERNARD PARISH

BLOCK MP0008

BLOCK MP0005

P.O.B.  
X=2,757,292.59  
Y=366,580.00

**TRACT 35946 - Portion of Blocks 24, and 25, Grand Isle Area, Jefferson and Lafourche Parishes, Louisiana**

The beds and bottoms of all water bodies belonging to the State of Louisiana located in that portion of Blocks 24, and 25, Grand Isle Area, together with any present lands formed by accretion to the shoreline, located in Jefferson and Lafourche Parishes, Louisiana, and not presently under mineral lease on January 14, 2004, the geographical area of which is more fully described as follows: Beginning at the Southeast corner of State Lease No. 17160 and a point on the South line of Block 25, Grand Isle Area, having Coordinates of X = 2,393,087.00 and Y = 156,019.31; thence North 3,268.66 feet along the East line of said State Lease No. 17160 to its Northeast corner and a point on the South line of State Lease No. 1486, as amended, having Coordinates of X = 2,393,087.00 and Y = 159,287.97; thence along the boundaries of said State Lease No. 1486 the following: East 1,292.21 feet and North 5,612.03 feet to its Northeast corner having Coordinates of X = 2,394,379.21 and Y = 164,900.00; thence continue North 5,877.35 feet to a point on the North line of said Block 25 having Coordinates of X = 2,394,379.21 and Y = 170,777.35; thence East 4,248.52 feet to the Northeast corner of said Block 25 and the Northwest corner of Block 24, Grand Isle Area, having Coordinates of X = 2,398,627.73 and Y = 170,777.35; thence continue East 4,000.27 feet along the North line of said Block 24 to a point having Coordinates of X = 2,402,628.00 and Y = 170,777.35; thence South 8,783.63 feet to a point on the Three Mile Line having Coordinates of X = 2,402,628.00 and Y = 161,993.72; thence Southwesterly on a straight line to a point having Coordinates of X = 2,398,627.73 and Y = 158,808.72, being a point on the West line of said Block 24 and a point on the East line of said Block 25; thence Southwesterly on a straight line to a point having Coordinates of X = 2,397,195.00 and Y = 157,668.00; thence Southwesterly on an arc having a radius of 18,240.60 feet and a center at X = 2,385,833.00 and Y = 171,938.00 to a point having Coordinates of X = 2,396,858.00 and Y = 157,406.00; thence Southwesterly on a straight line to a point having Coordinates of X = 2,395,029.97 and Y = 156,019.31, being a point on the South line of said Block 25; thence along the South line of said Block 25 West 1,942.97 feet to the point of beginning, containing approximately **2,375.41 acres, LESS AND EXCEPT** that portion thereof, if any, lying seaward of the line three nautical miles from the coast line of Louisiana, as said three mile line has been decreed by the Supreme Court of the United States, as determined by a Special Master appointed therein, in litigation styled **United States v. State of Louisiana et al No. 9 Original**, in 1975, all as more particularly outlined on a plat in the Office of Mineral Resources, Department of Natural Resources. All bearings, distances and coordinates are based on the Louisiana Coordinate System of 1927, (South Zone).

NOTE: The above description of the Tract nominated for lease has been provided and corrected, where required, exclusively by the nomination party. Any mineral lease selected from this Tract and awarded by the Louisiana State Mineral Board shall be without warranty of any kind,

either express, implied, or statutory, including, but not limited to, the implied warranties of merchantability and fitness for a particular purpose. Should the mineral lease awarded by the Louisiana State Mineral Board be subsequently modified, cancelled or abrogated due to the existence of conflicting leases, operating agreements, private claims or other future obligations or conditions which may affect all or any portion of the leased Tract, it shall not relieve the Lessee of the obligation to pay any bonus due thereon to the Louisiana State Mineral Board, nor shall the Louisiana State Mineral Board be obligated to refund any consideration paid by the Lessor prior to such modification, cancellation, or abrogation, including, but not limited to, bonuses, rentals and royalties.

NOTE: The State of Louisiana does hereby reserve, and this lease shall be subject to, the imprescriptible right of surface use in the nature of a servitude in favor of the Department of Natural Resources, including its Offices and Commissions, for the sole purpose of implementing, constructing, servicing and maintaining approved coastal zone management and/or restoration projects. Utilization of any and all rights derived under this lease by the mineral lessee, its agents, successors or assigns, shall not interfere with nor hinder the reasonable surface use by the Department of Natural Resources, its Offices or Commissions, as herein above reserved.

Applicant: Cypress Energy Corporation

Bidder	Cash Payment	Price/Acre	Rental	Oil	Gas	Other

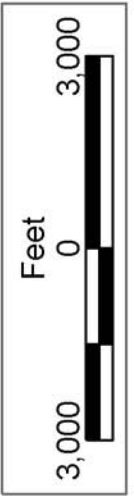


JEFFERSON PARISH

BLOCK GI0024

LA

US



LAFOURCHE PARISH

GRAND ISLE AREA

BLOCK GI0025

SL 1486

SL 17160

SL 1486

P.O.B.  
X=2,393,087.00  
Y=156,019.31

**TRACT 35947 - Portion of Block 9, South Timbalier Area, Revised, Terrebonne Parish, Louisiana**

The beds and bottoms of all water bodies belonging to the State of Louisiana located in that portion of Block 9, South Timbalier Area, Revised, together with any present lands formed by accretion to the shoreline, located in Terrebonne Parish, Louisiana, and not presently under mineral lease on January 14, 2004, the geographical area of which is more fully described as follows: Beginning at the Southwest corner of Block 9, South Timbalier Area, Revised, having Coordinates of X = 2,217,646.02 and Y = 127,591.99; Thence North 2,023.56 feet along the West boundary of said Block 9 to a point being the Southwest corner of State Lease No. 4238, as amended, having Coordinates of X = 2,217,646.02 and Y = 129,615.55; Thence North 61 degrees 11 minutes 51 seconds East 9,870.43 feet along the South boundary of said State Lease No. 4238, as amended, to its Southeast corner, also being the Northwest corner of State Lease No. 16944, having Coordinates of X = 2,226,295.33 and Y = 134,371.05; Thence South 2,000.00 feet along the West boundary of said State Lease No. 16944 to its Southwest corner having Coordinates of X = 2,226,295.33 and Y = 132,371.05; Thence East 4,476.39 feet along the South boundary of said State Lease No. 16944 to its Southeast corner having Coordinates of X = 2,230,771.72 and Y = 132,371.05; Thence North 2,000.00 feet along the East boundary of said State Lease No. 16944 to its Northeast corner having Coordinates of X = 2,230,771.72 and Y = 134,371.05; Thence West 4,476.39 feet along the North boundary of said State Lease No. 16944 to its Northwest corner, also being the Southeast corner of said State Lease No. 4238, as amended, having Coordinates of X = 2,226,295.33 and Y = 134,371.05; Thence North 55 degrees 17 minutes 22 seconds West 100.00 feet along the East boundary of said State Lease No. 4238, as amended, to the Southeast corner of State Lease No. 16604 having Coordinates of X = 2,226,213.13 and Y = 134,427.99; Thence North 29 degrees 17 minutes 11 seconds East 3,490.08 feet along the East boundary of said State Lease No. 16604 to its Northeast corner, also being the Southeast corner of State Lease No. 15307, having Coordinates of X = 2,227,920.39 and Y = 137,471.97; Thence North 29 degrees 17 minutes 11 seconds East 4,679.68 feet along the East boundary of said State Lease No. 15307 to its Northeast corner on the North boundary of said Block 9 having Coordinates of X = 2,230,209.57 and Y = 141,553.53; Thence East 3,036.45 feet along the said North boundary of Block 9 to its Northeast corner having Coordinates of X = 2,233,246.02 and Y = 141,553.53; Thence South 11,123.57 feet along the East boundary of said Block 9 to a point on the Three Mile Decree line derived from the June 16, 1975 Decree in the United States v. Louisiana No. 9 Original, having Coordinates of X = 2,233,246.02 and Y = 130,429.96; Thence along the said Three Mile Decree line the following courses: Southwesterly in a straight line to a point having Coordinates of X = 2,229,997.00 and Y = 129,637.00; Southwesterly in a straight line to a point having Coordinates of X = 2,228,299.00 and Y = 128,761.00; Southwesterly on an arc having a radius of 18,240.60 feet and a center at X = 2,219,935.00 and Y = 144,971.00 to a point having Coordinates of X = 2,227,466.00 and Y = 128,358.00; Southwesterly in a straight line to a

point on the South boundary of said Block 9 having Coordinates of X = 2,225,776.24 and Y = 127,591.99; Thence West 8,130.22 feet along the said South boundary of Block 9 to the point of beginning, containing approximately **2,304.79 acres, LESS AND EXCEPT** that portion thereof, if any, lying seaward of the line three nautical miles from the coast line of Louisiana, as said three mile line has been decreed by the Supreme Court of the United States, as determined by a Special Master appointed therein, in litigation styled **United States v. State of Louisiana et al No. 9 Original**, in 1975, all as more particularly outlined on a plat in the Office of Mineral Resources, Department of Natural Resources. All bearings, distances and coordinates are based on the Louisiana Coordinate System of 1927, (South Zone).

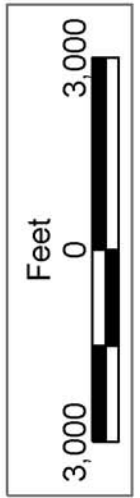
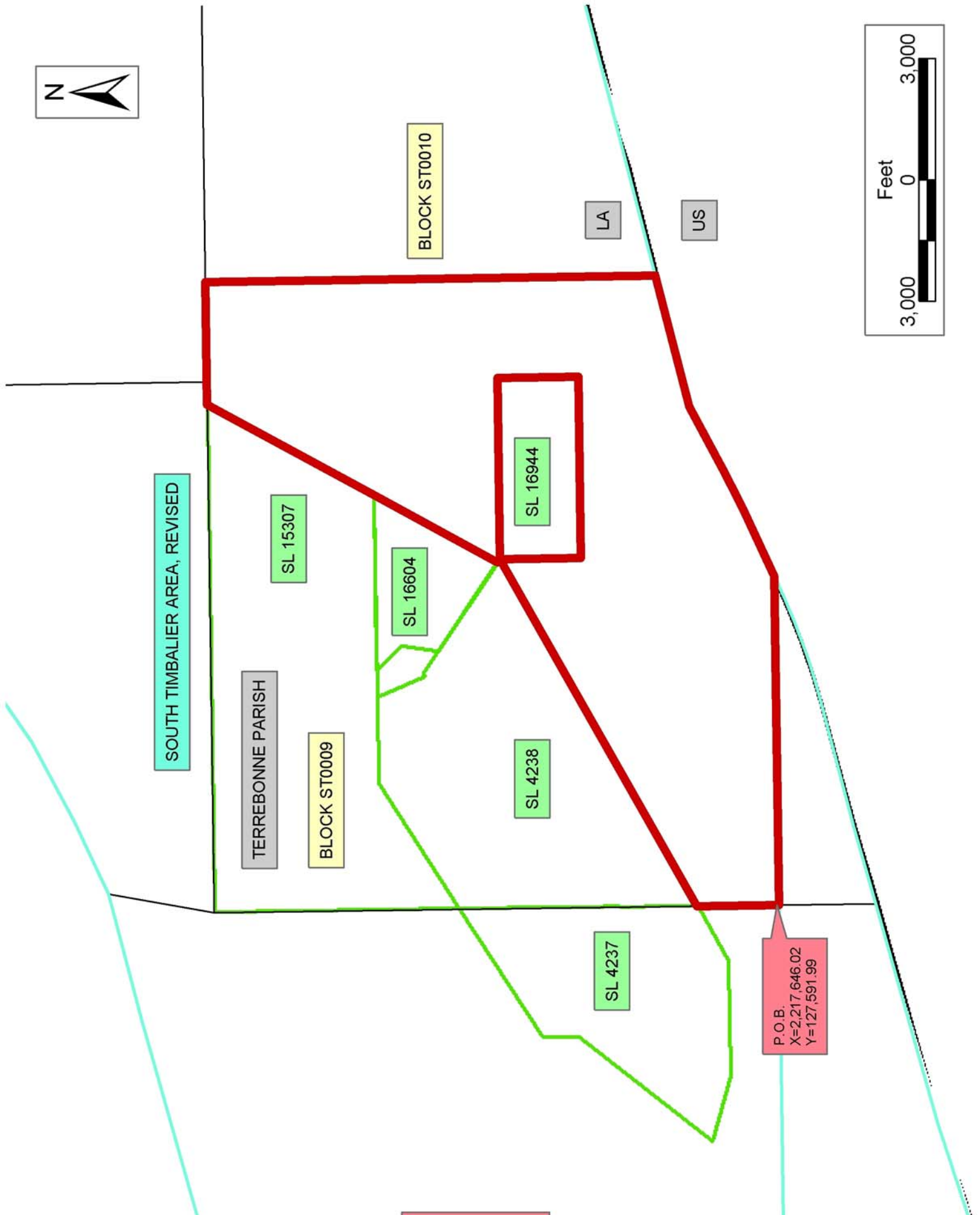
NOTE: The above description of the Tract nominated for lease has been provided and corrected, where required, exclusively by the nomination party. Any mineral lease selected from this Tract and awarded by the Louisiana State Mineral Board shall be without warranty of any kind, either express, implied, or statutory, including, but not limited to, the implied warranties of merchantability and fitness for a particular purpose. Should the mineral lease awarded by the Louisiana State Mineral Board be subsequently modified, cancelled or abrogated due to the existence of conflicting leases, operating agreements, private claims or other future obligations or conditions which may affect all or any portion of the leased Tract, it shall not relieve the Lessee of the obligation to pay any bonus due thereon to the Louisiana State Mineral Board, nor shall the Louisiana State Mineral Board be obligated to refund any consideration paid by the Lessor prior to such modification, cancellation, or abrogation, including, but not limited to, bonuses, rentals and royalties.

NOTE: The State of Louisiana does hereby reserve, and this lease shall be subject to, the imprescriptible right of surface use in the nature of a servitude in favor of the Department of Natural Resources, including its Offices and Commissions, for the sole purpose of implementing, constructing, servicing and maintaining approved coastal zone management and/or restoration projects. Utilization of any and all rights derived under this lease by the mineral lessee, its agents, successors or assigns, shall not interfere with nor hinder the reasonable surface use by the Department of Natural Resources, its Offices or Commissions, as herein above reserved.



Applicant: Day Exploration

Bidder	Cash Payment	Price/Acre	Rental	Oil	Gas	Other



**TRACT 35948 - Portion of Block 81, West Delta Area, Plaquemines Parish, Louisiana**

The beds and bottoms of all water bodies belonging to the State of Louisiana located in that portion of Block 81, West Delta Area, together with any present lands formed by accretion to the shoreline, located in Plaquemines Parish, Louisiana, and not presently under mineral lease on January 14, 2004, the geographical area of which is more fully described as follows: Beginning at a point in the East line of Block 81, West Delta Area, having Coordinates of X = 2,605,477.93 and Y = 113,414.00; thence West 9,232.49 feet to a point having Coordinates of X = 2,596,245.44 and Y = 113,414.00; thence Northeasterly on an arc having a radius of 18,240.60 feet and a center at X = 2,614,270.00 and Y = 110,615.00 to a point having Coordinates of X = 2,597,233.00 and Y = 117,130.00; thence Northerly on a straight line to a point on the North line of said Block 81 having Coordinates of X = 2,597,229.02 and Y = 123,834.20; thence East 8,248.91 feet along the North line of said Block 81 to its Northeast corner having Coordinates of X = 2,605,477.93 and Y = 123,834.20; thence South 10,420.20 feet along the East line of said Block 81 to the point of beginning, containing approximately **2,020.72 acres, LESS AND EXCEPT** that portion thereof, if any, lying seaward of the line three nautical miles from the coast line of Louisiana, as said three mile line has been decreed by the Supreme Court of the United States, as determined by a Special Master appointed therein, in litigation styled **United States v. State of Louisiana et al No. 9 Original**, in 1975, all as more particularly outlined on a plat in the Office of Mineral Resources, Department of Natural Resources. All bearings, distances and coordinates are based on the Louisiana Coordinate System of 1927, (South Zone).

NOTE: The above description of the Tract nominated for lease has been provided and corrected, where required, exclusively by the nomination party. Any mineral lease selected from this Tract and awarded by the Louisiana State Mineral Board shall be without warranty of any kind, either express, implied, or statutory, including, but not limited to, the implied warranties of merchantability and fitness for a particular purpose. Should the mineral lease awarded by the Louisiana State Mineral Board be subsequently modified, cancelled or abrogated due to the existence of conflicting leases, operating agreements, private claims or other future obligations or conditions which may affect all or any portion of the leased Tract, it shall not relieve the Lessee of the obligation to pay any bonus due thereon to the Louisiana State Mineral Board, nor shall the Louisiana State Mineral Board be obligated to refund any consideration paid by the Lessor prior to such modification, cancellation, or abrogation, including, but not limited to, bonuses, rentals and royalties.

NOTE: The State of Louisiana does hereby reserve, and this lease shall be subject to, the imprescriptible right of surface use in the nature of a servitude in favor of the Department of Natural Resources, including its Offices and Commissions, for the sole purpose of implementing, constructing, servicing and maintaining approved coastal zone management

and/or restoration projects. Utilization of any and all rights derived under this lease by the mineral lessee, its agents, successors or assigns, shall not interfere with nor hinder the reasonable surface use by the Department of Natural Resources, its Offices or Commissions, as herein above reserved.

Applicant: Angelle & Donohue Oil & Gas Properties, Inc.

Bidder	Cash Payment	Price/Acre	Rental	Oil	Gas	Other



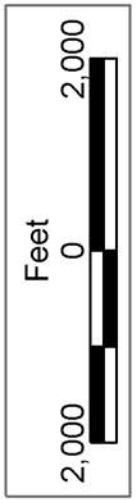
WEST DELTA AREA

PLAQUEMINES PARISH

BLOCK WD0082

BLOCK WD0081

P.O.B.  
X=2,605,477.93  
Y=113,414.00



LA

US

**TRACT 35949 - Portion of Block 82, West Delta Area, Plaquemines Parish, Louisiana**

The beds and bottoms of all water bodies belonging to the State of Louisiana located in that portion of Block 82, West Delta Area, together with any present lands formed by accretion to the shoreline, located in Plaquemines Parish, Louisiana, and not presently under mineral lease on January 14, 2004, the geographical area of which is more fully described as follows: Beginning at a point on the West line of Block 82, West Delta Area, having Coordinates of X = 2,605,477.93 and Y = 113,414.00; thence North 10,420.20 feet along the West line of said Block 82 to its Northwest corner having Coordinates of X = 2,605,477.93 and Y = 123,834.20; thence East 9,991.41 feet along the North line of said Block 82 to a point having Coordinates of X = 2,615,469.34 and Y = 123,834.20; thence Southerly approximately 8385 feet to a point on the boundary of State Lease No. 2565; thence Southwesterly along the boundary of said State Lease No. 2565 to a point within said Block 82, having Coordinates of X = 2,614,697.84 and Y = 113,414.00; thence West approximately 9,220 feet to the point of beginning, **LESS AND EXCEPT**, if any, that portion of State Lease No. 2565, that may lie within the above described tract, containing approximately **2,361 acres**, all as more particularly outlined on a plat on file in the Office of Mineral Resources, Department of Natural Resources. All bearings, distances and coordinates are based on Louisiana Coordinate System of 1927, (North or South Zone).

NOTE: The above description of the Tract nominated for lease has been provided and corrected, where required, exclusively by the nomination party. Any mineral lease selected from this Tract and awarded by the Louisiana State Mineral Board shall be without warranty of any kind, either express, implied, or statutory, including, but not limited to, the implied warranties of merchantability and fitness for a particular purpose. Should the mineral lease awarded by the Louisiana State Mineral Board be subsequently modified, cancelled or abrogated due to the existence of conflicting leases, operating agreements, private claims or other future obligations or conditions which may affect all or any portion of the leased Tract, it shall not relieve the Lessee of the obligation to pay any bonus due thereon to the Louisiana State Mineral Board, nor shall the Louisiana State Mineral Board be obligated to refund any consideration paid by the Lessor prior to such modification, cancellation, or abrogation, including, but not limited to, bonuses, rentals and royalties.

NOTE: The State of Louisiana does hereby reserve, and this lease shall be subject to, the imprescriptible right of surface use in the nature of a servitude in favor of the Department of Natural Resources, including its Offices and Commissions, for the sole purpose of implementing, constructing, servicing and maintaining approved coastal zone management and/or restoration projects. Utilization of any and all rights derived under this lease by the mineral lessee, its agents, successors or assigns, shall not interfere with nor hinder the reasonable surface use by the

Department of Natural Resources, its Offices or Commissions, as herein above reserved.

NOTE: The Department of Wildlife and Fisheries has designated certain areas in the coastal waters of the State of Louisiana as Oyster Seed Bed Areas. The exact location of those Seed Bed Areas must be obtained from the Department of Wildlife and Fisheries and any work done under a mineral lease from the State of Louisiana may necessarily be conducted in conformity with the rules and regulations promulgated by the said Department of Wildlife and Fisheries for Oyster Seed Bed Areas.

Applicant: Angelle & Donohue Oil & Gas Properties, Inc.

Bidder	Cash Payment	Price/Acre	Rental	Oil	Gas	Other



SL 17379

SL 17380

BLOCK WD0083

SL 2565



WEST DELTA AREA

PLAQUEMINES PARISH

BLOCK WD0082

BLOCK WD0081

P.O.B.  
X=2,605,477.93  
Y=113,414.00