

**STATE
AGENCY
TRACTS**

TRACT 34121 - STATE AGENCY - Sabine Parish, Louisiana

A certain tract of land belonging to and not under mineral lease from the Sabine Parish Police Jury, on January 9, 2002, being more fully described as follows: Beginning at a point having Coordinates of X = 1,596,600.00 and Y = 420,450.00; thence East 5,400.00 feet to a point having Coordinates of X = 1,602,000.00 and Y = 420,450.00; thence South 5,450.00 feet to a point having Coordinates of X = 1,602,000.00 and Y = 415,000.00; thence West 5,400.00 feet to a point having Coordinates of X = 1,596,600.00 and Y = 415,000.00; thence North 5,450.00 feet to the point of beginning, excluding beds and bottoms of all navigable waters, containing approximately 6 acres, as shown outlined on a plat on file in the Office of Mineral Resources, Department of Natural Resources, as provided by the applicant. All bearings, distances and coordinates are based on Louisiana Coordinate System of 1927 (South Zone).

NOTE: The above description of the tract nominated for lease has been provided exclusively by the party nominating the tract for lease. The Louisiana State Mineral Board makes no representation as to the accuracy of the description of the nominated tract or its suitability for lease. The Louisiana State Mineral Board has made no inspection of the nominated tract for the existence of conflicting leases, operating agreements, private claims or other existing or future obligations or conditions which may affect all or any portion of the nominated tract or its suitability for lease.

Maps depicting the nominated tract, containing the bearings, distances and coordinates of the nominated tract based on the Louisiana Coordinate System of 1927, North or South Zone, as applicable, are available for public inspection and review at the offices of the Louisiana State Mineral Board from 10:00 a.m. to 3:00 p.m. Monday - Friday.

In the event of conflict between the description of the nominated tract set forth above and the description of the nominated property as contained on the maps maintained at the offices of the Louisiana State Mineral Board, the Louisiana State Mineral Board maps shall prevail and shall provide the final property description of the lease to be awarded of the nominated tract.

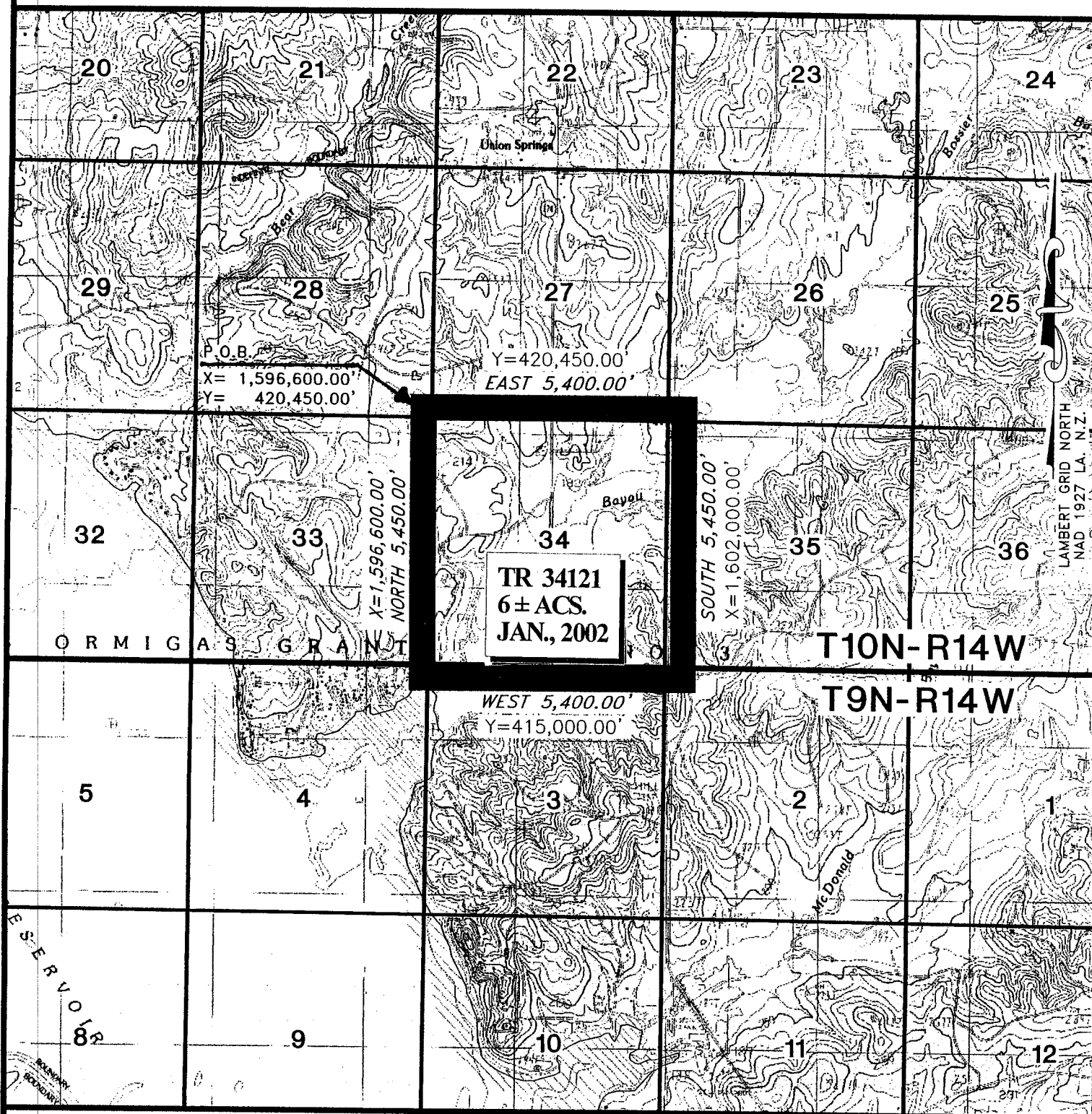
Any mineral lease of the nominated tract by the Louisiana State Mineral Board shall be without warranty of any kind, either express, implied, or statutory, including, but not limited to, the implied warranties or merchantability and fitness for a particular purpose. Should the mineral lease of the nominated tract awarded by the Louisiana State Mineral Board be subsequently modified, cancelled or abrogated due to the existence of conflicting leases, operating agreements, private claims or other existing or future obligations or conditions which may affect all or any portion of the leased tract, it shall not relieve the Lessee of the obligation to pay any bonus due thereon to the Louisiana State Mineral Board, nor shall the Louisiana State Mineral Board be obligated to refund any consideration paid by the Lessee prior to such modification, cancellation, or abrogation, including, but not limited to, bonuses, rents and royalties.

Applicant: Upstream Energy, Inc. to Agency and by Resolution from the Sabine Parish Police Jury authorizing the Mineral Board to act

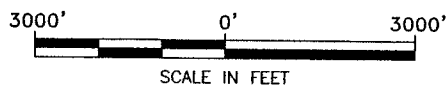
in its behalf.

248

Bidder	Cash Payment	Price / Acre	Rental	Oil	Gas	Other



SABINE PARISH, LOUISIANA



TRACT 34122 - WITHDRAWN PER APPLICANT