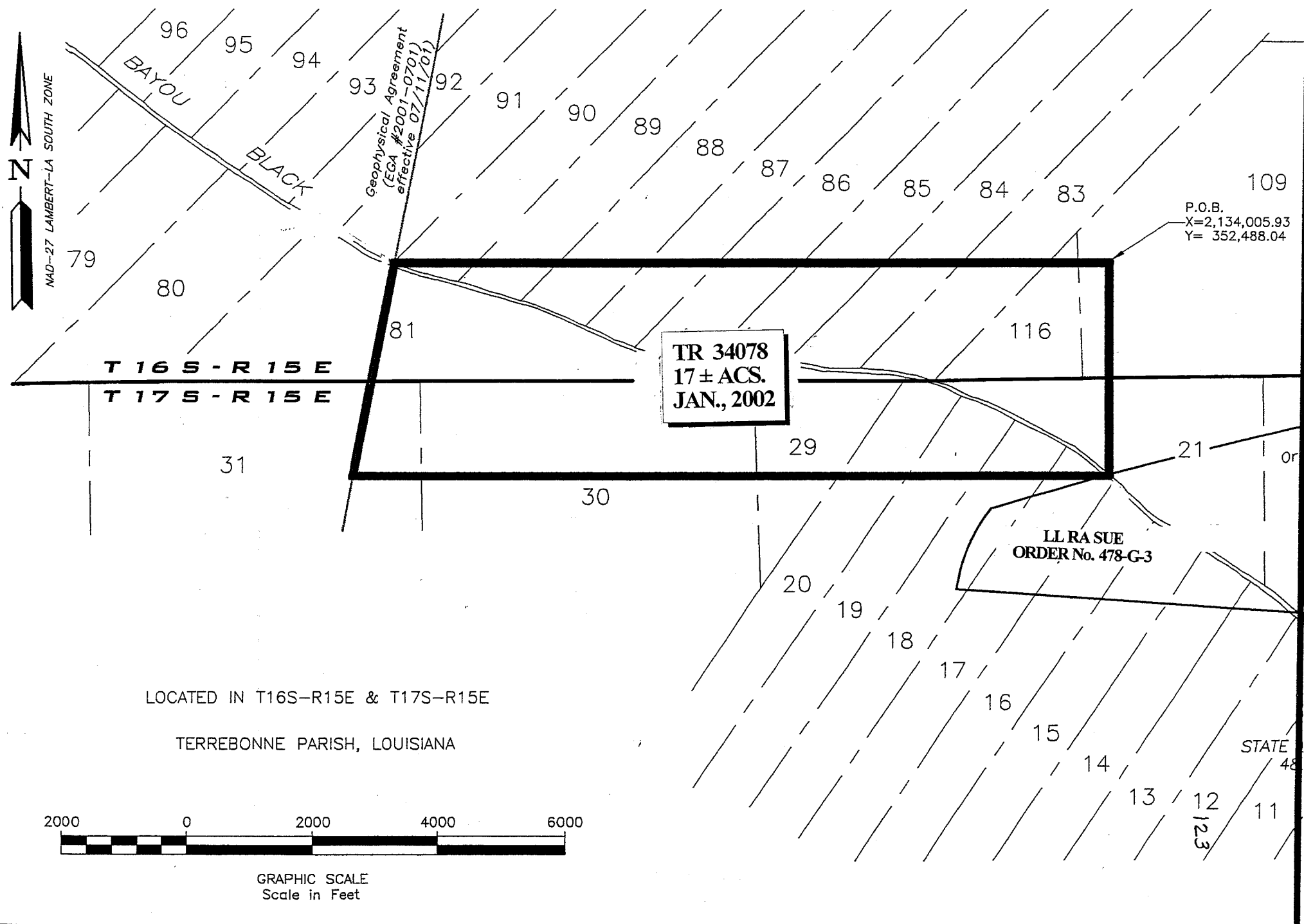




NAD-27 LAMBERT-LA SOUTH ZONE



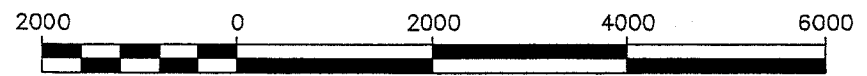
T 16 S - R 15 E
T 17 S - R 15 E

TR 34078
17± ACS.
JAN., 2002

P.O.B.
X=2,134,005.93
Y= 352,488.04

LL RA SUE
ORDER No. 478-G-3

LOCATED IN T16S-R15E & T17S-R15E
TERREBONNE PARISH, LOUISIANA



GRAPHIC SCALE
Scale in Feet

TRACT 34079 - Terrebonne Parish, Louisiana

All of the lands now or formerly constituting the beds and bottoms of all water bodies of every nature and description and all islands and other lands formed by accretion or reliction, except tax lands, owned by and not under mineral lease from the State of Louisiana on January 9, 2002, situated in Terrebonne Parish, Louisiana, within the following described boundaries: Beginning at a point having Coordinates of X = 2,175,913.83 and Y = 351,640.59; thence South 7,828.84 feet to State Lease No. 2234 and said point having Coordinates of X = 2,176,093.03 and Y = 343,832.53; thence Northwest 4,980.43 feet to a point having Coordinates of X = 2,171,306.89 and Y = 345,191.31; thence Southwest 2,096.53 feet to a point having Coordinates of X = 2,169,532.92 and Y = 344,073.96; thence Northwest 3,240.22 feet to a point having Coordinates of X = 2,166,763.73 and Y = 345,756.41; thence Northwest 4,067.53 feet to a point having Coordinates of X = 2,164,207.46 and Y = 348,920.31; thence Northeast 4,898.31 feet to the point of beginning, containing approximately 11 acres, as shown outlined on a plat on file in the Office of Mineral Resources, Department of Natural Resources, as provided by the applicant. All bearings, distances and coordinates are based on Louisiana Coordinate System of 1927 (South Zone).

NOTE: The above description of the tract nominated for lease has been provided exclusively by the party nominating the tract for lease. The Louisiana State Mineral Board makes no representation as to the accuracy of the description of the nominated tract or its suitability for lease. The Louisiana State Mineral Board has made no inspection of the nominated tract for the existence of conflicting leases, operating agreements, private claims or other existing or future obligations or conditions which may affect all or any portion of the nominated tract or its suitability for lease.

Maps depicting the nominated tract, containing the bearings, distances and coordinates of the nominated tract based on the Louisiana Coordinate System of 1927, North or South Zone, as applicable, are available for public inspection and review at the offices of the Louisiana State Mineral Board from 10:00 a.m. to 3:00 p.m. Monday - Friday.

In the event of conflict between the description of the nominated tract set forth above and the description of the nominated property as contained on the maps maintained at the offices of the Louisiana State Mineral Board, the Louisiana State Mineral Board maps shall prevail and shall provide the final property description of the lease to be awarded of the nominated tract.

Any mineral lease of the nominated tract by the Louisiana State Mineral Board shall be without warranty of any kind, either express, implied, or statutory, including, but not limited to, the implied warranties or merchantability and fitness for a particular purpose. Should the mineral lease of the nominated tract awarded by the Louisiana State Mineral Board be subsequently modified, cancelled or abrogated due to the existence of conflicting leases, operating agreements, private claims or other existing of future obligations or conditions which may affect all or any portion of the leased tract, it shall not relieve the Lessee of the obligation to pay any bonus due thereon to the Louisiana State Mineral Board, nor shall the Louisiana State Mineral Board be obligated to refund

any consideration paid by the Lessee prior to such modification, cancellation, or abrogation, including, but not limited to, bonuses, rents and royalties.

NOTE: The State of Louisiana does hereby reserve, and this lease shall be subject to, the imprescriptible right of surface use in the nature of a servitude in favor of the Department of Natural Resources, including its Offices and Commissions, for the sole purpose of implementing, constructing, servicing and maintaining approved coastal zone management and/or restoration projects. Utilization of any and all rights derived under this lease by the mineral lessee, its agents, successors or assigns, shall not interfere with nor hinder the reasonable surface use by the Department of Natural Resources, its Offices or Commissions, as hereinabove reserved.

Applicant: Acadian Land Services, L.L.C.

Bidder	Cash Payment	Price / Acre	Rental	Oil	Gas	Other

LOUISIANA COORDINATE SYSTEM
(1927 SOUTH ZONE)

N

T16S-R16E

T16S-R17E

126

X=2,168,382.06
Y= 351,482.76

P.O.B.
X=2,175,913.83
Y= 351,640.59

X=2,164,207.46
Y= 348,920.31

TR 34079
11 ± ACS.
JAN., 2002

X=2,166,763.73
Y= 345,756.41

X=2,171,306.89
Y= 345,191.31

X=2,176,093.03
Y= 343,832.53

X=2,169,532.92
Y= 344,073.96

T17S-R16E

SL 2234

T17S-R17E

SECTIONS 67,71,80 & 81
T17S-R16E
TERREBONNE PARISH, LOUISIANA

GRAPHIC SCALE

4000' 2000' 0 4000' 8000' 12000'

TRACT 34080 - Terrebonne Parish, Louisiana

All of the lands now or formerly constituting the beds and bottoms of all water bodies of every nature and description and all islands and other lands formed by accretion or reliction, except tax lands, owned by and not under mineral lease from the State of Louisiana on January 9, 2002, situated in Terrebonne Parish, Louisiana, within the following described boundaries: Beginning at a point having Coordinates of X = 2,187,081.52 and Y = 351,794.69; thence Southwest 729.96 feet to a point having Coordinates of X = 2,186,889.80 and Y = 351,090.36; thence Southeast 5,583.16 feet to a point having Coordinates of X = 2,189,344.30 and Y = 346,075.67; thence Southwest 5,262.87 feet along the line of State Lease No. 2234 to a point having Coordinates of X = 2,184,559.08 and Y = 343,884.91; thence Northwest 5,590.27 feet along the line of State Lease No. 2234 to a point having Coordinates of X = 2,182,097.13 and Y = 348,903.87; thence Southwest 6,555.86 feet along the line of State Lease No. 2234 to a point having Coordinates of X = 2,180,428.62 and Y = 342,563.90; thence Northwest 4,517.38 feet along the line of State Lease No. 2234 to a point having Coordinates of X = 2,176,093.03 and Y = 343,832.53; thence North 7,810.12 feet to a point having Coordinates of X = 2,175,913.83 and Y = 351,640.59; thence East 11,168.76 feet to the point of beginning, containing approximately 50 acres, as shown outlined on a plat on file in the Office of Mineral Resources, Department of Natural Resources, as provided by the applicant. All bearings, distances and coordinates are based on Louisiana Coordinate System of 1927 (South Zone).

NOTE: The above description of the tract nominated for lease has been provided exclusively by the party nominating the tract for lease. The Louisiana State Mineral Board makes no representation as to the accuracy of the description of the nominated tract or its suitability for lease. The Louisiana State Mineral Board has made no inspection of the nominated tract for the existence of conflicting leases, operating agreements, private claims or other existing or future obligations or conditions which may affect all or any portion of the nominated tract or its suitability for lease.

Maps depicting the nominated tract, containing the bearings, distances and coordinates of the nominated tract based on the Louisiana Coordinate System of 1927, North or South Zone, as applicable, are available for public inspection and review at the offices of the Louisiana State Mineral Board from 10:00 a.m. to 3:00 p.m. Monday - Friday.

In the event of conflict between the description of the nominated tract set forth above and the description of the nominated property as contained on the maps maintained at the offices of the Louisiana State Mineral Board, the Louisiana State Mineral Board maps shall prevail and shall provide the final property description of the lease to be awarded of the nominated tract.

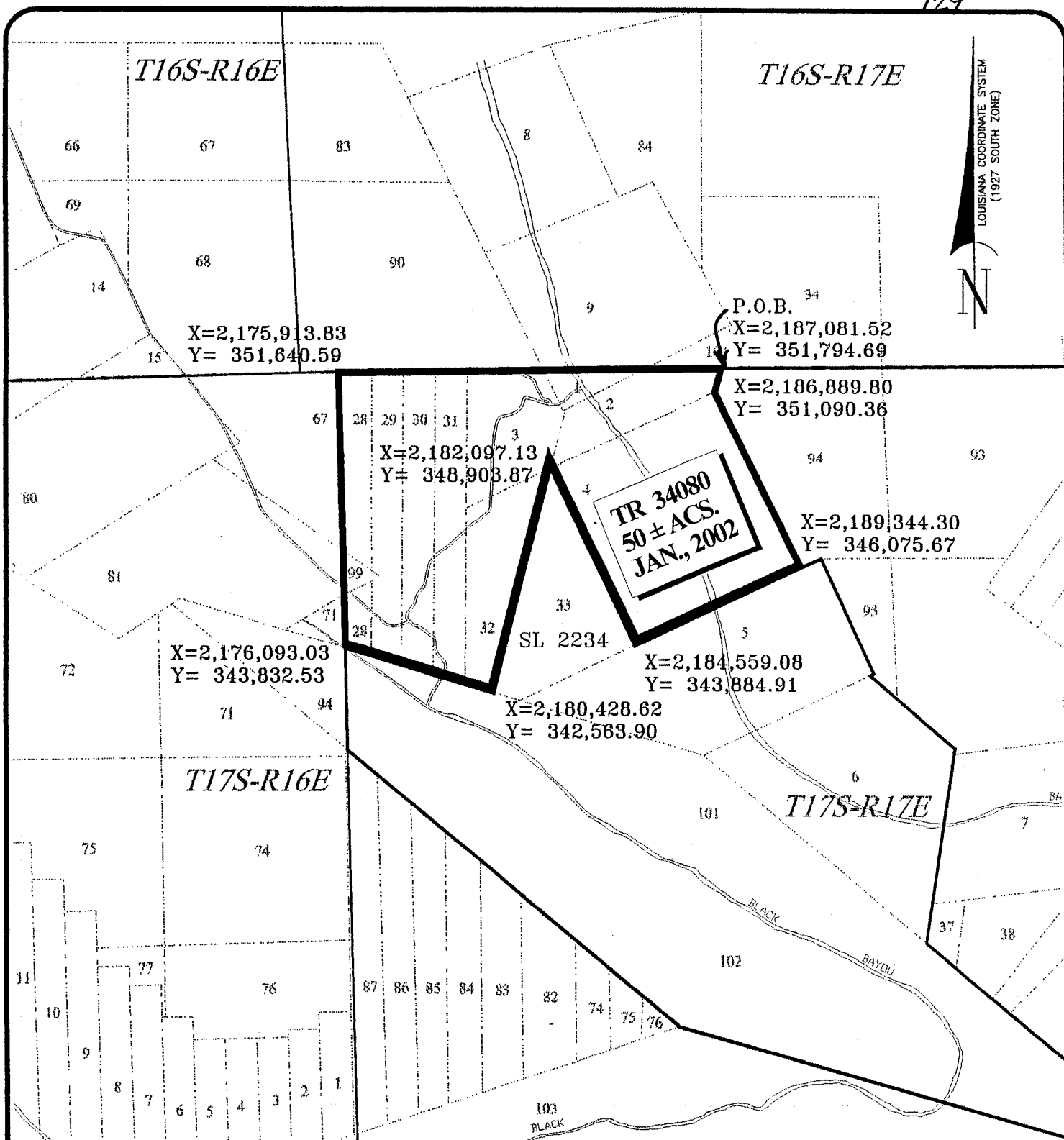
Any mineral lease of the nominated tract by the Louisiana State Mineral Board shall be without warranty of any kind, either express, implied, or statutory, including, but not limited to, the implied warranties or merchantability and fitness for a particular purpose. Should the mineral lease of the nominated tract awarded by the Louisiana State Mineral Board be subsequently modified, cancelled or abrogated due to the existence of conflicting leases, operating agreements, private claims or other existing of future

obligations or conditions which may affect all or any portion of the leased tract, it shall not relieve the Lessee of the obligation to pay any bonus due thereon to the Louisiana State Mineral Board, nor shall the Louisiana State Mineral Board be obligated to refund any consideration paid by the Lessee prior to such modification, cancellation, or abrogation, including, but not limited to, bonuses, rents and royalties.

NOTE: The State of Louisiana does hereby reserve, and this lease shall be subject to, the imprescriptible right of surface use in the nature of a servitude in favor of the Department of Natural Resources, including its Offices and Commissions, for the sole purpose of implementing, constructing, servicing and maintaining approved coastal zone management and/or restoration projects. Utilization of any and all rights derived under this lease by the mineral lessee, its agents, successors or assigns, shall not interfere with nor hinder the reasonable surface use by the Department of Natural Resources, its Offices or Commissions, as hereinabove reserved.

Applicant: Acadian Land Services, L.L.C.

Bidder	Cash Payment	Price / Acre	Rental	Oil	Gas	Other



SECTIONS 1-4, 28-32 & 99
T17S-R17E
TERREBONNE PARISH, LOUISIANA

TRACT 34081 - Lafourche Parish, Louisiana

All of the lands now or formerly constituting the beds and bottoms of all water bodies of every nature and description and all islands and other lands formed by accretion or reliction, except tax lands, owned by and not under mineral lease from the State of Louisiana on January 9, 2002, situated in Lafourche Parish, Louisiana, within the following described boundaries: Beginning at a point having Coordinates of X = 2,337,735.00 and Y = 259,955.00; thence North 30 degrees 00 minutes 00 seconds West 8,500.00 feet to a point having Coordinates of X = 2,333,485.00 and Y = 267,316.22; thence North 60 degrees 00 minutes 00 seconds East 7,200.00 feet to a point having Coordinates of X = 2,339,720.38 and Y = 270,916.22; thence South 30 degrees 00 minutes 00 seconds East 8,500.00 feet to a point having Coordinates of X = 2,343,970.38 and Y = 263,555.00; thence South 60 degrees 00 minutes 00 seconds West 7,200.00 feet to the point of beginning, containing approximately 35 acres, as shown outlined on a plat on file in the Office of Mineral Resources, Department of Natural Resources, as provided by the applicant. All bearings, distances and coordinates are based on Louisiana Coordinate System of 1927 (South Zone).

NOTE: The above description of the tract nominated for lease has been provided exclusively by the party nominating the tract for lease. The Louisiana State Mineral Board makes no representation as to the accuracy of the description of the nominated tract or its suitability for lease. The Louisiana State Mineral Board has made no inspection of the nominated tract for the existence of conflicting leases, operating agreements, private claims or other existing or future obligations or conditions which may affect all or any portion of the nominated tract or its suitability for lease.

Maps depicting the nominated tract, containing the bearings, distances and coordinates of the nominated tract based on the Louisiana Coordinate System of 1927, North or South Zone, as applicable, are available for public inspection and review at the offices of the Louisiana State Mineral Board from 10:00 a.m. to 3:00 p.m. Monday - Friday.

In the event of conflict between the description of the nominated tract set forth above and the description of the nominated property as contained on the maps maintained at the offices of the Louisiana State Mineral Board, the Louisiana State Mineral Board maps shall prevail and shall provide the final property description of the lease to be awarded of the nominated tract.

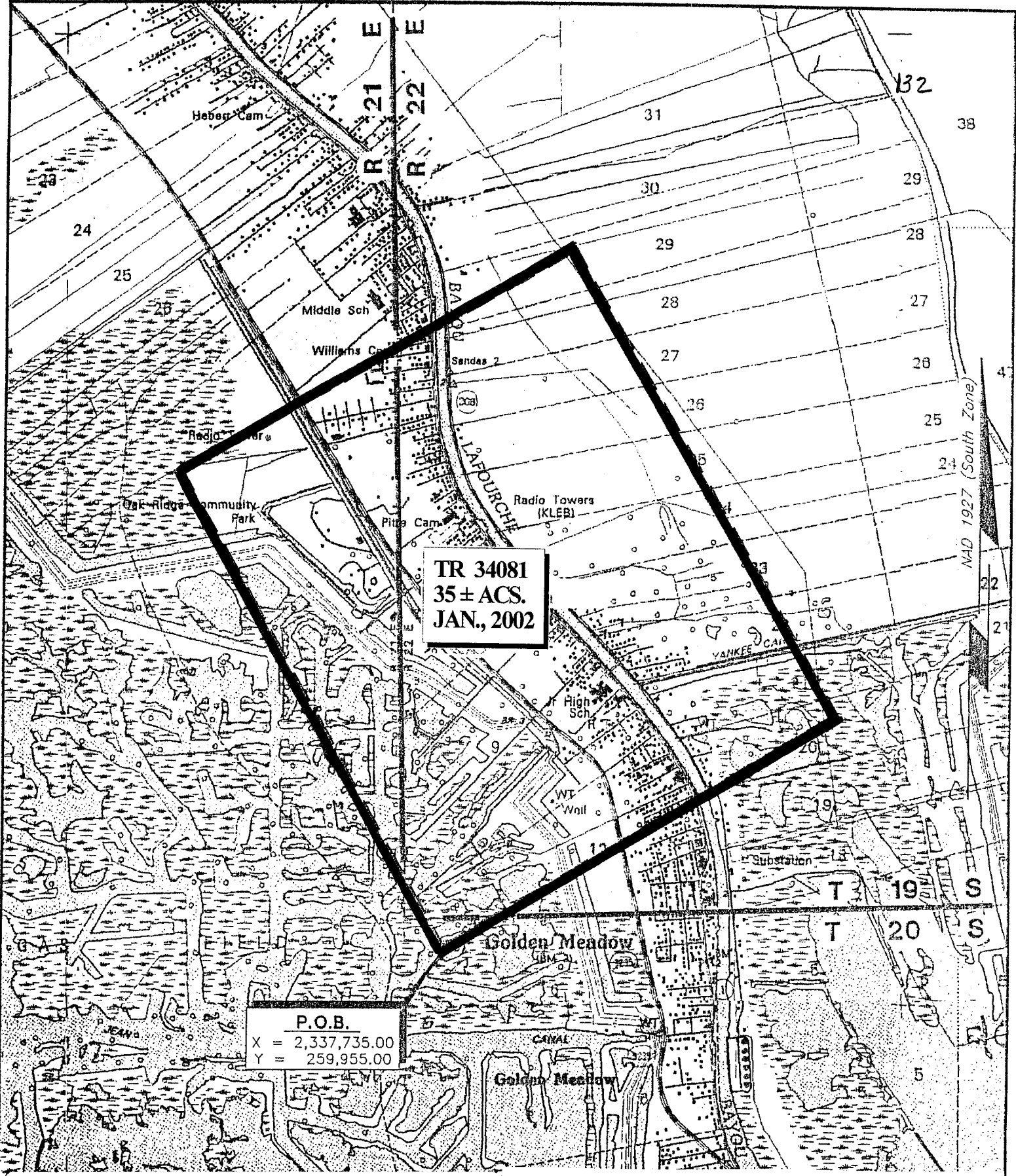
Any mineral lease of the nominated tract by the Louisiana State Mineral Board shall be without warranty of any kind, either express, implied, or statutory, including, but not limited to, the implied warranties or merchantability and fitness for a particular purpose. Should the mineral lease of the nominated tract awarded by the Louisiana State Mineral Board be subsequently modified, cancelled or abrogated due to the existence of conflicting leases, operating agreements, private claims or other existing of future obligations or conditions which may affect all or any portion of the leased tract, it shall not relieve the Lessee of the obligation to pay any bonus due thereon to the Louisiana State Mineral Board, nor shall the Louisiana State Mineral Board be obligated to refund any consideration paid by the Lessee prior to such modification,

cancellation, or abrogation, including, but not limited to, bonuses, rents and royalties.

NOTE: The State of Louisiana does hereby reserve, and this lease shall be subject to, the imprescriptible right of surface use in the nature of a servitude in favor of the Department of Natural Resources, including its Offices and Commissions, for the sole purpose of implementing, constructing, servicing and maintaining approved coastal zone management and/or restoration projects. Utilization of any and all rights derived under this lease by the mineral lessee, its agents, successors or assigns, shall not interfere with nor hinder the reasonable surface use by the Department of Natural Resources, its Offices or Commissions, as hereinabove reserved.

Applicant: Ken Savage & Associates, Inc.

Bidder	Cash Payment	Price / Acre	Rental	Oil	Gas	Other



TR 34081
35 ± ACS.
JAN., 2002

P.O.B.
X = 2,337,735.00
Y = 259,955.00

LAFOURCHE PARISH, LOUISIANA

SCALE : 1" = 2000'