

**TRACT 34068 - Calcasieu Parish, Louisiana**

All of the lands now or formerly constituting the beds and bottoms of all water bodies of every nature and description and all islands and other lands formed by accretion or reliction, except tax lands, owned by and not under mineral lease from the State of Louisiana on January 9, 2002, situated in Calcasieu Parish, Louisiana, within the following described boundaries: Beginning at a point having Coordinates of X = 1,330,250.00 and Y = 600,130.00; thence West 7,000.00 feet to a point having Coordinates of X = 1,323,250.00 and Y = 600,130.00; thence North 13,440.00 feet to a point having Coordinates of X = 1,323,250.00 and Y = 613,570.00; thence East 7,000.00 feet to a point having Coordinates of X = 1,330,250.00 and Y = 613,570.00; thence South 13,440.00 feet to the point of beginning, containing approximately **36 acres**, as shown outlined on a plat on file in the Office of Mineral Resources, Department of Natural Resources, as provided by the applicant. All bearings, distances and coordinates are based on Louisiana Coordinate System of 1927 (South Zone).

NOTE: The above description of the tract nominated for lease has been provided exclusively by the party nominating the tract for lease. The Louisiana State Mineral Board makes no representation as to the accuracy of the description of the nominated tract or its suitability for lease. The Louisiana State Mineral Board has made no inspection of the nominated tract for the existence of conflicting leases, operating agreements, private claims or other existing or future obligations or conditions which may affect all or any portion of the nominated tract or its suitability for lease.

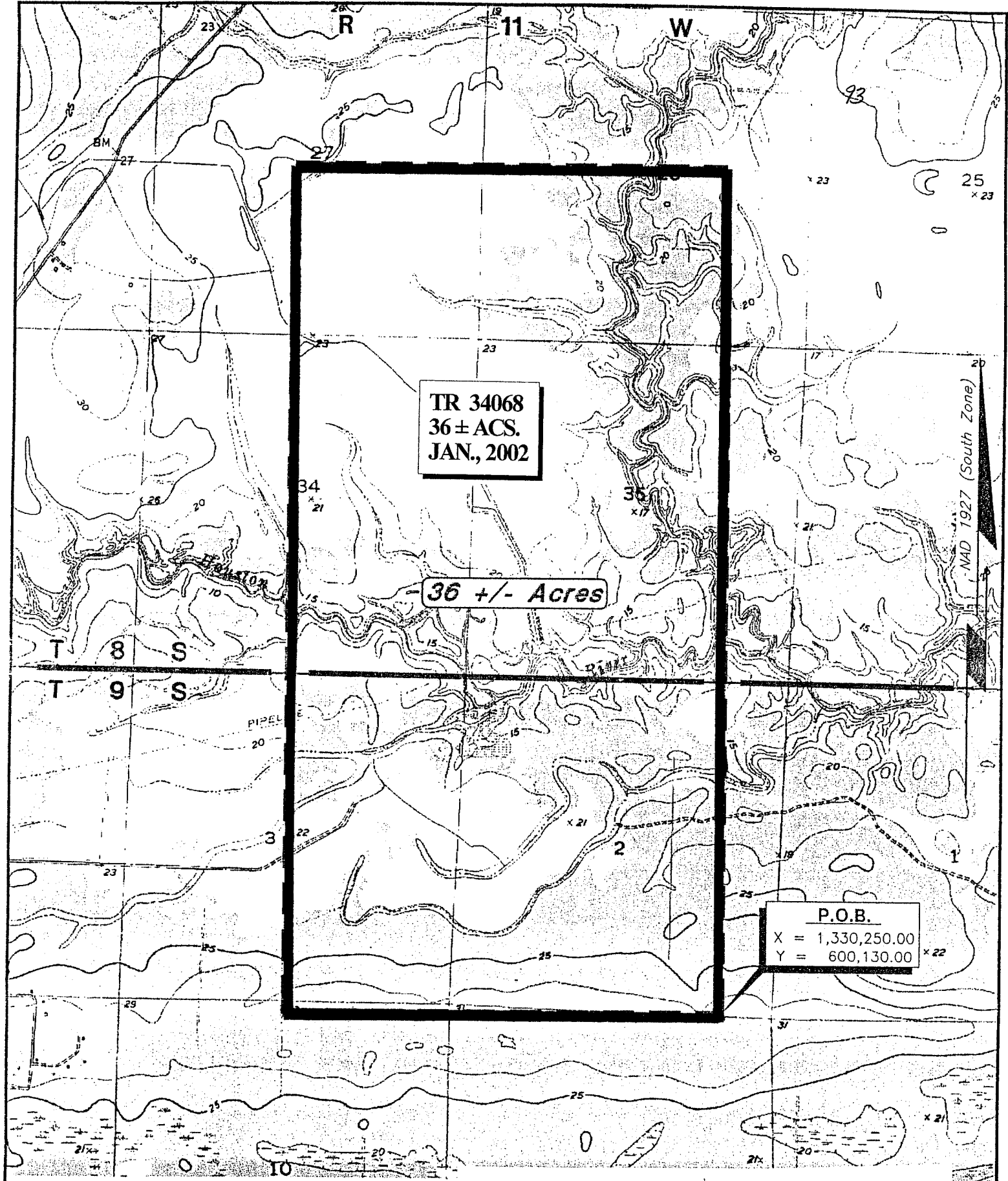
Maps depicting the nominated tract, containing the bearings, distances and coordinates of the nominated tract based on the Louisiana Coordinate System of 1927, North or South Zone, as applicable, are available for public inspection and review at the offices of the Louisiana State Mineral Board from 10:00 a.m. to 3:00 p.m. Monday - Friday.

In the event of conflict between the description of the nominated tract set forth above and the description of the nominated property as contained on the maps maintained at the offices of the Louisiana State Mineral Board, the Louisiana State Mineral Board maps shall prevail and shall provide the final property description of the lease to be awarded of the nominated tract.

Any mineral lease of the nominated tract by the Louisiana State Mineral Board shall be without warranty of any kind, either express, implied, or statutory, including, but not limited to, the implied warranties or merchantability and fitness for a particular purpose. Should the mineral lease of the nominated tract awarded by the Louisiana State Mineral Board be subsequently modified, cancelled or abrogated due to the existence of conflicting leases, operating agreements, private claims or other existing of future obligations or conditions which may affect all or any portion of the leased tract, it shall not relieve the Lessee of the obligation to pay any bonus due thereon to the Louisiana State Mineral Board, nor shall the Louisiana State Mineral Board be obligated to refund any consideration paid by the Lessee prior to such modification, cancellation, or abrogation, including, but not limited to, bonuses, rents and royalties.

Applicant: G. Matthew David, CPL & Associates, Ltd.

Bidder	Cash Payment	Price / Acre	Rental	Oil	Gas	Other



TR 34068  
36 ± ACS.  
JAN., 2002

36 +/- Acres

P.O.B.  
X = 1,330,250.00  
Y = 600,130.00

CALCASIEU

PARISH,

LOUISIANA

SCALE : 1" = 2000'

**TRACT 34069 - Cameron Parish, Louisiana**

All of the lands now or formerly constituting the beds and bottoms of all water bodies of every nature and description and all islands and other lands formed by accretion or reliction, except tax lands, owned by and not under mineral lease from the State of Louisiana on January 9, 2002, situated in Cameron Parish, Louisiana, within the following described boundaries: Beginning at a point having Coordinates of X = 1,543,870.00 and Y = 479,910.00; thence West 5,410.00 feet to the Northeast corner of State Lease No. 17223 having Coordinates of X = 1,538,460.00 and Y = 479,910.00; thence along the boundary of said State Lease No. 17223 the following courses: West 3,500.00 feet, South 2,990.00 feet and West 4,560.00 feet to a point on the boundary of said State Lease No. 17223 having Coordinates of X = 1,530,400.00 and Y = 476,920.00; thence North 3,366.42 feet having Coordinates of X = 1,530,400.00 and Y = 480,286.42; thence North 44 degrees 48 minutes 55 seconds East 16,582.86 feet to the Southwest corner of State Lease No. 16136 having Coordinates of X = 1,542,088.00 and Y = 492,050.00; thence East 1,782.00 feet along the South line of said State Lease No. 16136 to a point having Coordinates of X = 1,543,870.00 and Y = 492,050.00; thence South 820.00 feet to the Northwest corner of State Lease No. 17224 having Coordinates of X = 1,543,870.00 and Y = 491,230.00; thence South 6,530.00 feet along the West line of said State Lease No. 17224 to its Southwest corner having Coordinates of X = 1,543,870.00 and Y = 484,700.00; thence South 4,790.00 feet to the point of beginning, containing approximately **848 acres**, as shown outlined on a plat on file in the Office of Mineral Resources, Department of Natural Resources, as provided by the applicant. All bearings, distances and coordinates are based on Louisiana Coordinate System of 1927 (South Zone).

NOTE: The above description of the tract nominated for lease has been provided exclusively by the party nominating the tract for lease. The Louisiana State Mineral Board makes no representation as to the accuracy of the description of the nominated tract or its suitability for lease. The Louisiana State Mineral Board has made no inspection of the nominated tract for the existence of conflicting leases, operating agreements, private claims or other existing or future obligations or conditions which may affect all or any portion of the nominated tract or its suitability for lease.

Maps depicting the nominated tract, containing the bearings, distances and coordinates of the nominated tract based on the Louisiana Coordinate System of 1927, North or South Zone, as applicable, are available for public inspection and review at the offices of the Louisiana State Mineral Board from 10:00 a.m. to 3:00 p.m. Monday - Friday.

In the event of conflict between the description of the nominated tract set forth above and the description of the nominated property as contained on the maps maintained at the offices of the Louisiana State Mineral Board, the Louisiana State Mineral Board maps shall prevail and shall provide the final property description of the lease to be awarded of the nominated tract.

Any mineral lease of the nominated tract by the Louisiana State Mineral Board shall be without warranty of any kind, either express, implied, or statutory, including, but not limited to, the implied warranties or merchantability and fitness for a particular

purpose. Should the mineral lease of the nominated tract awarded by the Louisiana State Mineral Board be subsequently modified, cancelled or abrogated due to the existence of conflicting leases, operating agreements, private claims or other existing of future obligations or conditions which may affect all or any portion of the leased tract, it shall not relieve the Lessee of the obligation to pay any bonus due thereon to the Louisiana State Mineral Board, nor shall the Louisiana State Mineral Board be obligated to refund any consideration paid by the Lessee prior to such modification, cancellation, or abrogation, including, but not limited to, bonuses, rents and royalties.

NOTE: The State of Louisiana does hereby reserve, and this lease shall be subject to, the imprescriptible right of surface use in the nature of a servitude in favor of the Department of Natural Resources, including its Offices and Commissions, for the sole purpose of implementing, constructing, servicing and maintaining approved coastal zone management and/or restoration projects. Utilization of any and all rights derived under this lease by the mineral lessee, its agents, successors or assigns, shall not interfere with nor hinder the reasonable surface use by the Department of Natural Resources, its Offices or Commissions, as hereinabove reserved.

Applicant: Michele Webb

Bidder	Cash Payment	Price / Acre	Rental	Oil	Gas	Other



**TRACT 34070 - Cameron Parish, Louisiana**

All of the lands now or formerly constituting the beds and bottoms of all water bodies of every nature and description and all islands and other lands formed by accretion or reliction, except tax lands, owned by and not under mineral lease from the State of Louisiana on January 9, 2002, situated in Cameron Parish, Louisiana, within the following described boundaries: Beginning at a point having Coordinates of X = 1,543,870.00 and Y = 479,910.00; thence South 8,760.00 feet to a point having Coordinates of X = 1,543,870.00 and Y = 471,150.00; thence West 7,190.00 feet to the most Southerly Southeast corner of State Lease No. 17223 having Coordinates of X = 1,536,680.00 and Y = 471,150.00; thence along the boundary of said State Lease No. 17223 the following courses: North 4,050.00 feet, East 1,780.00 feet and North 4,710.00 feet to its Northeast corner having Coordinates of X = 1,538,460.00 and Y = 479,910.00; thence East 5,410.00 feet to the point of beginning, containing approximately 609 acres, as shown outlined on a plat on file in the Office of Mineral Resources, Department of Natural Resources, as provided by the applicant. All bearings, distances and coordinates are based on Louisiana Coordinate System of 1927 (South Zone).

NOTE: The above description of the tract nominated for lease has been provided exclusively by the party nominating the tract for lease. The Louisiana State Mineral Board makes no representation as to the accuracy of the description of the nominated tract or its suitability for lease. The Louisiana State Mineral Board has made no inspection of the nominated tract for the existence of conflicting leases, operating agreements, private claims or other existing or future obligations or conditions which may affect all or any portion of the nominated tract or its suitability for lease.

Maps depicting the nominated tract, containing the bearings, distances and coordinates of the nominated tract based on the Louisiana Coordinate System of 1927, North or South Zone, as applicable, are available for public inspection and review at the offices of the Louisiana State Mineral Board from 10:00 a.m. to 3:00 p.m. Monday - Friday.

In the event of conflict between the description of the nominated tract set forth above and the description of the nominated property as contained on the maps maintained at the offices of the Louisiana State Mineral Board, the Louisiana State Mineral Board maps shall prevail and shall provide the final property description of the lease to be awarded of the nominated tract.

Any mineral lease of the nominated tract by the Louisiana State Mineral Board shall be without warranty of any kind, either express, implied, or statutory, including, but not limited to, the implied warranties or merchantability and fitness for a particular purpose. Should the mineral lease of the nominated tract awarded by the Louisiana State Mineral Board be subsequently modified, cancelled or abrogated due to the existence of conflicting leases, operating agreements, private claims or other existing of future obligations or conditions which may affect all or any portion of the leased tract, it shall not relieve the Lessee of the obligation to pay any bonus due thereon to the Louisiana State Mineral Board, nor shall the Louisiana State Mineral Board be obligated to refund any consideration paid by the Lessee prior to such modification,

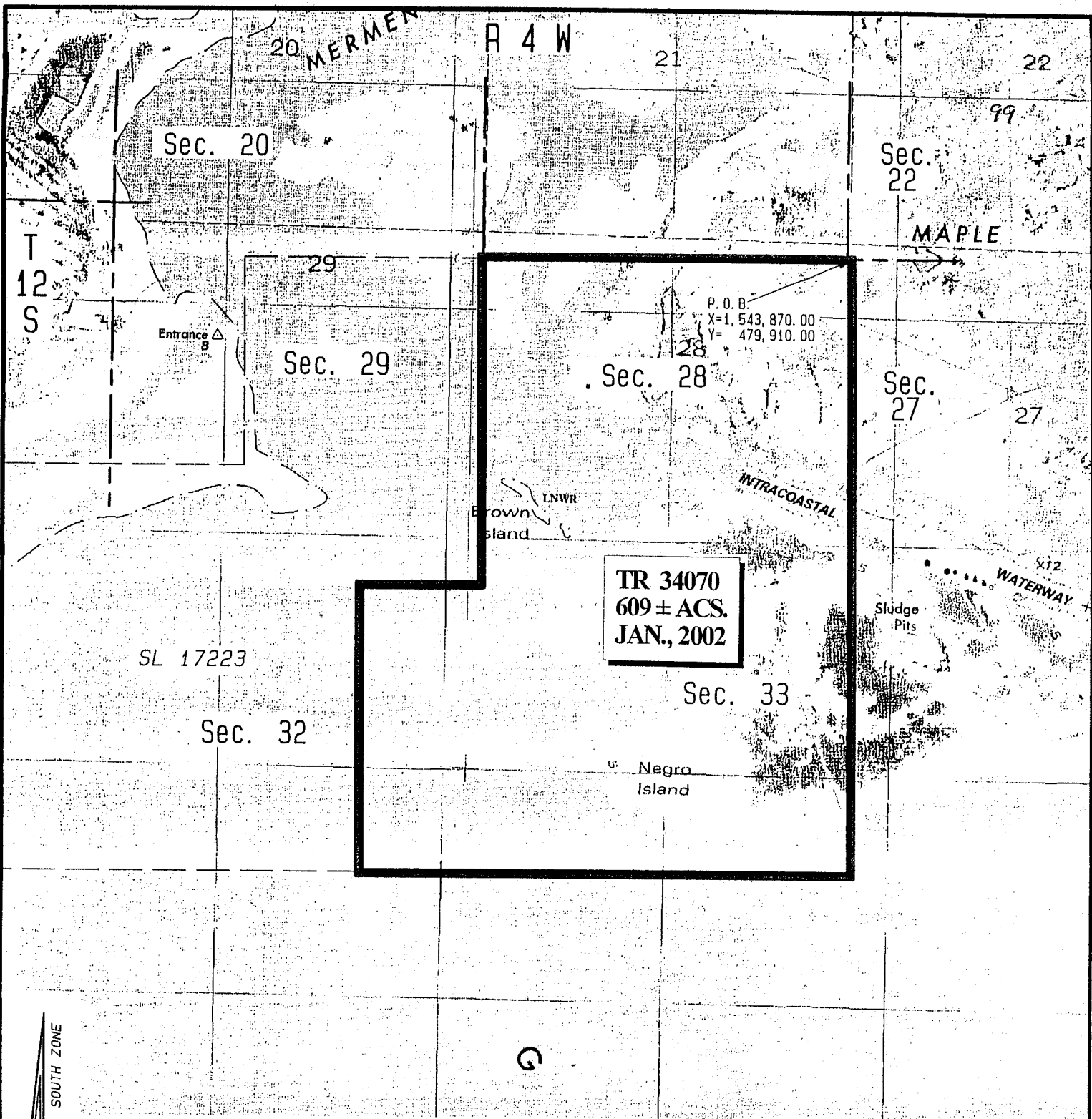
cancellation, or abrogation, including, but not limited to, bonuses, rents and royalties.

NOTE: The State of Louisiana does hereby reserve, and this lease shall be subject to, the imprescriptible right of surface use in the nature of a servitude in favor of the Department of Natural Resources, including its Offices and Commissions, for the sole purpose of implementing, constructing, servicing and maintaining approved coastal zone management and/or restoration projects. Utilization of any and all rights derived under this lease by the mineral lessee, its agents, successors or assigns, shall not interfere with nor hinder the reasonable surface use by the Department of Natural Resources, its Offices or Commissions, as hereinabove reserved.

Applicant: Michele Webb

Bidder	Cash Payment	Price / Acre	Rental	Oil	Gas	Other

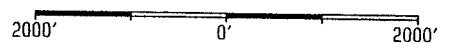




NAD 27 LAMBERT LA. SOUTH ZONE

Topography obtained from USC&GS Quadrangle  
"LATANIA LAKE, LA.", 1980 Edition.

Cameron Parish, Louisiana



**TRACT 34071 - Vermilion Parish, Louisiana**

All lands owned by and not under mineral lease from the State of Louisiana on January 9, 2002, situated in Vermilion Parish, Louisiana, and being more fully described as follows: Beginning at the Northwest corner of State Lease No. 17164 having Coordinates of X = 1,654,923.62 and Y = 357,341.33; thence North 00 degrees 15 minutes 38 seconds West 2,626.80 feet to a point having Coordinates of X = 1,654,911.67 and Y = 359,968.10; thence South 89 degrees 52 minutes 42 seconds East 1,477.00 feet to a point having Coordinates of X = 1,656,388.67 and Y = 359,964.96; thence South 04 degrees 31 minutes 51 seconds West 230.00 feet to a point having Coordinates of X = 1,656,370.50 and Y = 359,735.68; thence South 85 degrees 28 minutes 08 seconds East 3,897.11 feet to a point having Coordinates of X = 1,660,255.43 and Y = 359,427.81; thence South 00 degrees 21 minutes 10 seconds East 3,409.29 feet to a point on the West line of State Lease No. 16787 and the Northeast corner of State Lease No. 16786 having Coordinates of X = 1,660,276.42 and Y = 356,018.58; thence along the North line of said State Lease No. 16786 South 89 degrees 53 minutes 17 seconds West 2,706.81 feet to the Southeast corner of said State Lease No. 17164 having Coordinates of X = 1,657,569.62 and Y = 356,013.29; thence along the boundaries of said State Lease No. 17164 the following courses: North 1,328.03 feet and West 2,646.00 feet to the point of beginning, containing approximately 230.68 acres, as shown outlined on a plat on file in the Office of Mineral Resources, Department of Natural Resources, as provided by the applicant. All bearings, distances and coordinates are based on Louisiana Coordinate System of 1927 (South Zone).

NOTE: The above description of the tract nominated for lease has been provided exclusively by the party nominating the tract for lease. The Louisiana State Mineral Board makes no representation as to the accuracy of the description of the nominated tract or its suitability for lease. The Louisiana State Mineral Board has made no inspection of the nominated tract for the existence of conflicting leases, operating agreements, private claims or other existing or future obligations or conditions which may affect all or any portion of the nominated tract or its suitability for lease.

Maps depicting the nominated tract, containing the bearings, distances and coordinates of the nominated tract based on the Louisiana Coordinate System of 1927, North or South Zone, as applicable, are available for public inspection and review at the offices of the Louisiana State Mineral Board from 10:00 a.m. to 3:00 p.m. Monday - Friday.

In the event of conflict between the description of the nominated tract set forth above and the description of the nominated property as contained on the maps maintained at the offices of the Louisiana State Mineral Board, the Louisiana State Mineral Board maps shall prevail and shall provide the final property description of the lease to be awarded of the nominated tract.

Any mineral lease of the nominated tract by the Louisiana State Mineral Board shall be without warranty of any kind, either express, implied, or statutory, including, but not limited to, the implied warranties or merchantability and fitness for a particular purpose. Should the mineral lease of the nominated tract awarded by the Louisiana State Mineral Board be subsequently modified, cancelled or abrogated due to the existence of conflicting leases,

operating agreements, private claims or other existing of future obligations or conditions which may affect all or any portion of the leased tract, it shall not relieve the Lessee of the obligation to pay any bonus due thereon to the Louisiana State Mineral Board, nor shall the Louisiana State Mineral Board be obligated to refund any consideration paid by the Lessee prior to such modification, cancellation, or abrogation, including, but not limited to, bonuses, rents and royalties.

NOTE: The State of Louisiana does hereby reserve, and this lease shall be subject to, the imprescriptible right of surface use in the nature of a servitude in favor of the Department of Natural Resources, including its Offices and Commissions, for the sole purpose of implementing, constructing, servicing and maintaining approved coastal zone management and/or restoration projects. Utilization of any and all rights derived under this lease by the mineral lessee, its agents, successors or assigns, shall not interfere with nor hinder the reasonable surface use by the Department of Natural Resources, its Offices or Commissions, as hereinabove reserved.

Applicant: Day Exploration Company

Bidder	Cash Payment	Price / Acre	Rental	Oil	Gas	Other