

by the Louisiana State Mineral Board be subsequently modified, cancelled or abrogated due to the existence of conflicting leases, operating agreements, private claims or other existing of future obligations or conditions which may affect all or any portion of the leased tract, it shall not relieve the Lessee of the obligation to pay any bonus due thereon to the Louisiana State Mineral Board, nor shall the Louisiana State Mineral Board be obligated to refund any consideration paid by the Lessee prior to such modification, cancellation, or abrogation, including, but not limited to, bonuses, rents and royalties.

NOTE: It appears, according to our records, that a portion of this tract is located within the restrictive safety fairway area as set out by the Corps of Engineers, U.S. Army.

NOTE: The State of Louisiana does hereby reserve, and this lease shall be subject to, the imprescriptible right of surface use in the nature of a servitude in favor of the Department of Natural Resources, including its Offices and Commissions, for the sole purpose of implementing, constructing, servicing and maintaining approved coastal zone management and/or restoration projects. Utilization of any and all rights derived under this lease by the mineral lessee, its agents, successors or assigns, shall not interfere with nor hinder the reasonable surface use by the Department of Natural Resources, its Offices or Commissions, as hereinabove reserved.

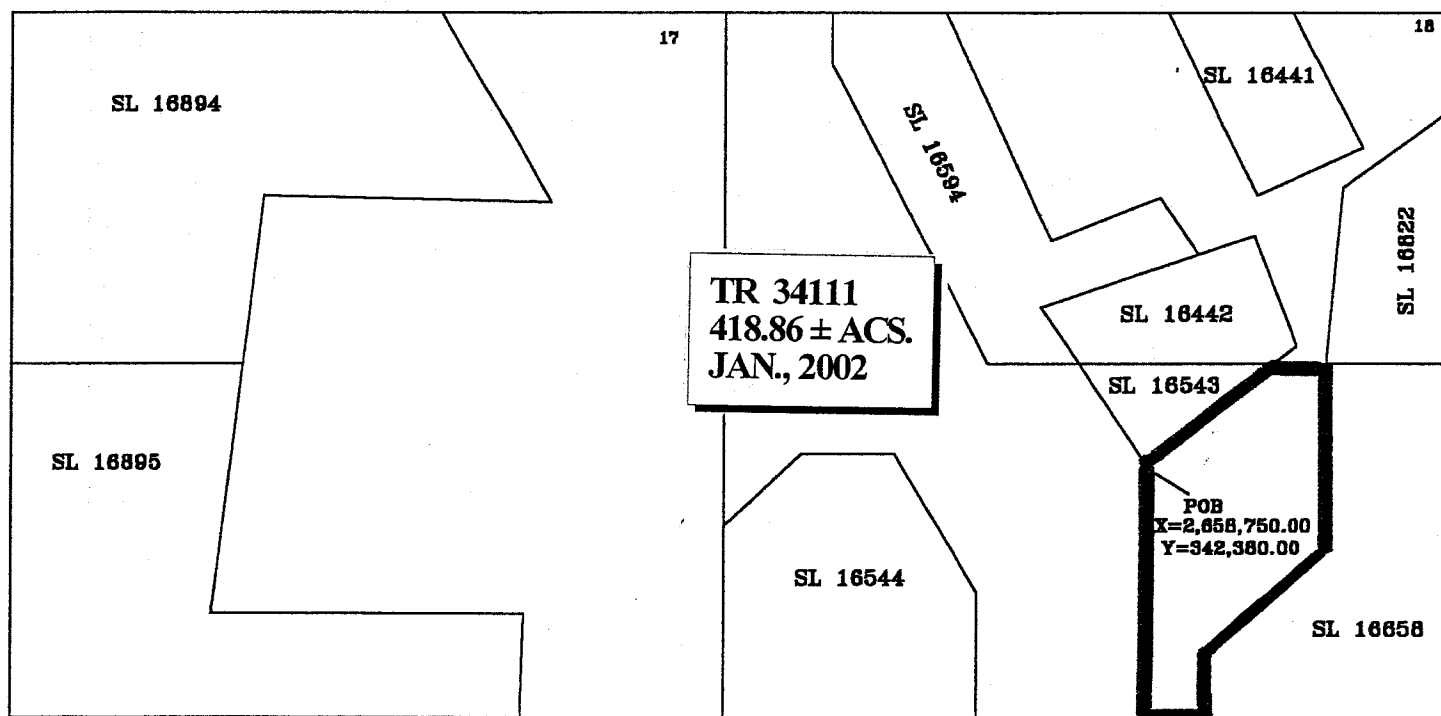
Applicant: Cummings Land Service

Bidder	Cash Payment	Price / Acre	Rental	Oil	Gas	Other



SCALE: 1" = 4,000'

BRETON SOUND AREA  
PLAQUEMINES PARISH



**TRACT 34112 - PORTION OF BLOCK 19, BRETON SOUND AREA, Plaquemines Parish, Louisiana**

All of the lands now or formerly constituting the beds and bottoms of all water bodies of every nature and description and all islands and other lands formed by accretion or reliction, except tax lands, belonging to the State of Louisiana and not under mineral lease on January 9, 2002, situated in Plaquemines Parish, Louisiana, and more particularly described as follows: Beginning at a point on the South line of Block 19, Breton Sound Area, being the Southwest corner of State Lease No. 16612 having Coordinates of X = 2,675,700.00 and Y = 337,080.00; thence North 21 degrees 00 minutes 00 seconds West 7,899.69 feet along the West line of said State Lease No. 16612 to its Northwest corner having Coordinates of X = 2,672,869.00 and Y = 344,455.00; thence West to the Northeast corner of State Lease No. 16610 having Coordinates of X = 2,670,650.00 and Y = 344,455.00; thence South along the East line of said State Lease No. 16610 to its Southeast corner and a point on the South line of said Block 19 having Coordinates of X = 2,670,650.00 and Y = 337,080.00; thence East to the point of beginning, containing approximately 615.35 acres, as shown outlined on a plat on file in the Office of Mineral Resources, Department of Natural Resources, as provided by the applicant. All bearings, distances and coordinates are based on Louisiana Coordinate System of 1927 (South Zone).

NOTE: The above description of the tract nominated for lease has been provided exclusively by the party nominating the tract for lease. The Louisiana State Mineral Board makes no representation as to the accuracy of the description of the nominated tract or its suitability for lease. The Louisiana State Mineral Board has made no inspection of the nominated tract for the existence of conflicting leases, operating agreements, private claims or other existing or future obligations or conditions which may affect all or any portion of the nominated tract or its suitability for lease.

Maps depicting the nominated tract, containing the bearings, distances and coordinates of the nominated tract based on the Louisiana Coordinate System of 1927, North or South Zone, as applicable, are available for public inspection and review at the offices of the Louisiana State Mineral Board from 10:00 a.m. to 3:00 p.m. Monday - Friday.

In the event of conflict between the description of the nominated tract set forth above and the description of the nominated property as contained on the maps maintained at the offices of the Louisiana State Mineral Board, the Louisiana State Mineral Board maps shall prevail and shall provide the final property description of the lease to be awarded of the nominated tract.

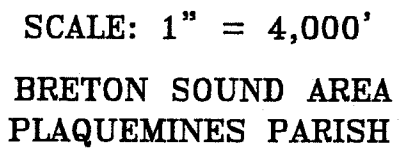
Any mineral lease of the nominated tract by the Louisiana State Mineral Board shall be without warranty of any kind, either express, implied, or statutory, including, but not limited to, the implied warranties or merchantability and fitness for a particular purpose. Should the mineral lease of the nominated tract awarded by the Louisiana State Mineral Board be subsequently modified, cancelled or abrogated due to the existence of conflicting leases, operating agreements, private claims or other existing of future obligations or conditions which may affect all or any portion of the leased tract, it shall not relieve the Lessee of the obligation

to pay any bonus due thereon to the Louisiana State Mineral Board, nor shall the Louisiana State Mineral Board be obligated to refund any consideration paid by the Lessee prior to such modification, cancellation, or abrogation, including, but not limited to, bonuses, rents and royalties.

NOTE: The State of Louisiana does hereby reserve, and this lease shall be subject to, the imprescriptible right of surface use in the nature of a servitude in favor of the Department of Natural Resources, including its Offices and Commissions, for the sole purpose of implementing, constructing, servicing and maintaining approved coastal zone management and/or restoration projects. Utilization of any and all rights derived under this lease by the mineral lessee, its agents, successors or assigns, shall not interfere with nor hinder the reasonable surface use by the Department of Natural Resources, its Offices or Commissions, as hereinabove reserved.

Applicant: Cummings Land Service

Bidder	Cash Payment	Price / Acre	Rental	Oil	Gas	Other



**TRACT 34113 - PORTION OF BLOCK 47, BRETON SOUND AREA, Plaquemines Parish, Louisiana**

All of the lands now or formerly constituting the beds and bottoms of all water bodies of every nature and description and all islands and other lands formed by accretion or reliction, except tax lands, belonging to the State of Louisiana and not under mineral lease on January 9, 2002, situated in Plaquemines Parish, Louisiana, and more particularly described as follows: Beginning at a point having Coordinates of X = 2,650,100.00 and Y = 307,580.00, said point also being the Northwest corner of Block 47, Breton Sound Area; thence East 7,375.00 feet on and along the North line of said Block 47, Breton Sound Area, to a point having Coordinates of X = 2,657,475.00 and Y = 307,580.00; thence South 7,050 feet to a point having Coordinates of X = 2,657,475.00 and Y = 300,530.00, said point also being on a Western boundary of State of Louisiana - State Lease No. 16569; thence South 553.00 feet on and along said Western boundary of said State of Louisiana - State Lease No. 16569 to a point having Coordinates of X = 2,657,475.00 and Y = 299,977.00, said point also being on a Northern boundary of State of Louisiana - State Lease No. 16797; thence West 4,832.00 feet on and along said Northern boundary of said State of Louisiana - State Lease No. 16797 to a point having Coordinates of X = 2,652,643.00 and Y = 299,977.00; thence West 2,543.00 feet to a point having Coordinates of X = 2,650,100.00 and Y = 299,977.00, said point also being on the West line of said Block 47, Breton Sound Area; thence North 7,603.00 feet on and along said West line of said Block 47, Breton Sound Area, to the point of beginning, containing approximately **1,287.24 acres**, as shown outlined on a plat on file in the Office of Mineral Resources, Department of Natural Resources, as provided by the applicant. All bearings, distances and coordinates are based on Louisiana Coordinate System of 1927 (South Zone).

NOTE: The above description of the tract nominated for lease has been provided exclusively by the party nominating the tract for lease. The Louisiana State Mineral Board makes no representation as to the accuracy of the description of the nominated tract or its suitability for lease. The Louisiana State Mineral Board has made no inspection of the nominated tract for the existence of conflicting leases, operating agreements, private claims or other existing or future obligations or conditions which may affect all or any portion of the nominated tract or its suitability for lease.

Maps depicting the nominated tract, containing the bearings, distances and coordinates of the nominated tract based on the Louisiana Coordinate System of 1927, North or South Zone, as applicable, are available for public inspection and review at the offices of the Louisiana State Mineral Board from 10:00 a.m. to 3:00 p.m. Monday - Friday.

In the event of conflict between the description of the nominated tract set forth above and the description of the nominated property as contained on the maps maintained at the offices of the Louisiana State Mineral Board, the Louisiana State Mineral Board maps shall prevail and shall provide the final property description of the lease to be awarded of the nominated tract.

Any mineral lease of the nominated tract by the Louisiana State Mineral Board shall be without warranty of any kind, either express, implied, or statutory, including, but not limited to, the implied

warranties or merchantability and fitness for a particular purpose. Should the mineral lease of the nominated tract awarded by the Louisiana State Mineral Board be subsequently modified, cancelled or abrogated due to the existence of conflicting leases, operating agreements, private claims or other existing or future obligations or conditions which may affect all or any portion of the leased tract, it shall not relieve the Lessee of the obligation to pay any bonus due thereon to the Louisiana State Mineral Board, nor shall the Louisiana State Mineral Board be obligated to refund any consideration paid by the Lessee prior to such modification, cancellation, or abrogation, including, but not limited to, bonuses, rents and royalties.

NOTE: The State of Louisiana does hereby reserve, and this lease shall be subject to, the imprescriptible right of surface use in the nature of a servitude in favor of the Department of Natural Resources, including its Offices and Commissions, for the sole purpose of implementing, constructing, servicing and maintaining approved coastal zone management and/or restoration projects. Utilization of any and all rights derived under this lease by the mineral lessee, its agents, successors or assigns, shall not interfere with nor hinder the reasonable surface use by the Department of Natural Resources, its Offices or Commissions, as hereinabove reserved.

Applicant: Robert A. Schroeder, Inc.

Bidder	Cash Payment	Price / Acre	Rental	Oil	Gas	Other

**BLOCK 34**

**BLK 35**

P.O.B.  
X = 2,650,100.00  
Y = 307,580.00

16796

TR 34113  
1,287.24 ± ACS.  
JAN., 2002

EAST  
7375'

X = 2,657,475  
Y = 307,580

NORTH  
7603'

7050' SOUTH

X = 2,657,475  
Y = 307,580

**BRETON SOUND**

First Energy Corp.  
SI 13861  
1  
Ø

**BLOCK 47**

X = 2,657,475  
Y = 300,530

2543'  
WEST

4832'  
WEST

**SOUTH**

$$\begin{aligned} X &= 2,652,643 \\ Y &= 299,977 \end{aligned}$$

X = 2,657,475  
Y = 299,977

X = 2,650,100  
Y = 299,977

SL 16797


SL 16569

**BRETON SOUND AREA**

Mobil  
Sl 5687  
1  
⊖

16892

49

1  
  
 Cities Service  
 St. 2601

Exxon Corporation  
SI 14563

**BLOCK 50**

151

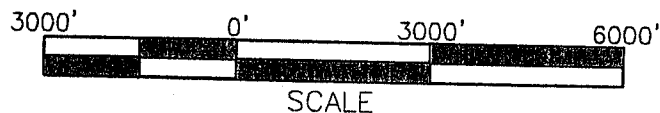
SL-1688



LOCATED IN  
BLOCK 47  
BRETON SOUND AREA  
PLAQUEMINES PARISH, LOUISIANA

SCALE 1" = 3000'

ALL COORDINATES, BEARINGS AND DISTANCES  
ARE GRID, AND ARE ON THE LOUISIANA  
LAMBERT PLANE COORDINATE SYSTEM,  
SOUTH ZONE, 1927 NORTH AMERICAN  
DATUM.





**TRACT 34114 - PORTION OF BLOCK 47, BRETON SOUND AREA, Plaquemines Parish, Louisiana**

All of the lands now or formerly constituting the beds and bottoms of all water bodies of every nature and description and all islands and other lands formed by accretion or reliction, except tax lands, belonging to the State of Louisiana and not under mineral lease on January 9, 2002, situated in Plaquemines Parish, Louisiana, and more particularly described as follows: Beginning at a point having Coordinates of X = 2,664,850.00 and Y = 307,580.00, said point also being the Northeast corner of Block 47, Breton Sound Area; thence South 8,300.00 feet on and along the East line of said Block 47, Breton Sound Area, to a point having Coordinates of X = 2,664,850.00 and Y = 299,280.00, said point also being on a Northern boundary of State of Louisiana - State Lease No. 16569; thence on and along said Northern boundary of said State of Louisiana - State Lease No. 16569 the following courses and distances, to-wit: North 75 degrees 24 minutes 12 seconds West 4,960.09 feet to a point having Coordinates of X = 2,660,050.00 and Y = 300,530.00; and West 2,575.00 feet to a point having Coordinates of X = 2,657,475.00 and Y = 300,530.00; thence North 7,050.00 feet to a point having Coordinates of X = 2,657,475.00 and Y = 307,580.00, said point also being on the North line of said Block 47, Breton Sound Area; thence East 7,375.00 feet on and along said North line of said Block 47, Breton Sound Area, to the point of beginning, containing approximately **1,262.48 acres**, as shown outlined on a plat on file in the Office of Mineral Resources, Department of Natural Resources, as provided by the applicant. All bearings, distances and coordinates are based on Louisiana Coordinate System of 1927 (South Zone).

NOTE: The above description of the tract nominated for lease has been provided exclusively by the party nominating the tract for lease. The Louisiana State Mineral Board makes no representation as to the accuracy of the description of the nominated tract or its suitability for lease. The Louisiana State Mineral Board has made no inspection of the nominated tract for the existence of conflicting leases, operating agreements, private claims or other existing or future obligations or conditions which may affect all or any portion of the nominated tract or its suitability for lease.

Maps depicting the nominated tract, containing the bearings, distances and coordinates of the nominated tract based on the Louisiana Coordinate System of 1927, North or South Zone, as applicable, are available for public inspection and review at the offices of the Louisiana State Mineral Board from 10:00 a.m. to 3:00 p.m. Monday - Friday.

In the event of conflict between the description of the nominated tract set forth above and the description of the nominated property as contained on the maps maintained at the offices of the Louisiana State Mineral Board, the Louisiana State Mineral Board maps shall prevail and shall provide the final property description of the lease to be awarded of the nominated tract.

Any mineral lease of the nominated tract by the Louisiana State Mineral Board shall be without warranty of any kind, either express, implied, or statutory, including, but not limited to, the implied warranties or merchantability and fitness for a particular purpose. Should the mineral lease of the nominated tract awarded

by the Louisiana State Mineral Board be subsequently modified, cancelled or abrogated due to the existence of conflicting leases, operating agreements, private claims or other existing of future obligations or conditions which may affect all or any portion of the leased tract, it shall not relieve the Lessee of the obligation to pay any bonus due thereon to the Louisiana State Mineral Board, nor shall the Louisiana State Mineral Board be obligated to refund any consideration paid by the Lessee prior to such modification, cancellation, or abrogation, including, but not limited to, bonuses, rents and royalties.

NOTE: The State of Louisiana does hereby reserve, and this lease shall be subject to, the imprescriptible right of surface use in the nature of a servitude in favor of the Department of Natural Resources, including its Offices and Commissions, for the sole purpose of implementing, constructing, servicing and maintaining approved coastal zone management and/or restoration projects. Utilization of any and all rights derived under this lease by the mineral lessee, its agents, successors or assigns, shall not interfere with nor hinder the reasonable surface use by the Department of Natural Resources, its Offices or Commissions, as hereinabove reserved.

Applicant: Robert A. Schroeder, Inc.

Bidder	Cash Payment	Price / Acre	Rental	Oil	Gas	Other