

TRACT 34108 - PORTION OF BLOCK 17, BRETON SOUND AREA, Plaquemines Parish, Louisiana

All of the lands now or formerly constituting the beds and bottoms of all water bodies of every nature and description and all islands and other lands formed by accretion or reliction, except tax lands, belonging to the State of Louisiana and not under mineral lease on January 9, 2002, situated in Plaquemines Parish, Louisiana, and more particularly described as follows: Beginning at the Northeast corner of State Lease No. 16895 having Coordinates of X = 2,640,145.49 and Y = 344,455.00; thence East 9,954.51 feet to a point on the East line of said Block 17 having Coordinates of X = 2,650,100.00 and Y = 344,455.00; thence South along the East line of said Block 17 to its Southeast corner having Coordinates of X = 2,650,100.00 and Y = 337,080.00; thence West 4,230.00 feet along the South line of said Block 17 to the most Southern Southeast corner of said State Lease No. 16895 having Coordinates of X = 2,645,870.00 and Y = 337,080.00; thence along the boundaries of said State Lease No. 16895 the following courses: North 01 degrees 58 minutes 13 seconds East 2,181.29 feet, West 6,450.00 feet and North 07 degrees 08 minutes 14 seconds East 5,235.57 feet to the point of beginning, containing approximately **1,435.79 acres**, as shown outlined on a plat on file in the Office of Mineral Resources, Department of Natural Resources, as provided by the applicant. All bearings, distances and coordinates are based on Louisiana Coordinate System of 1927 (South Zone).

NOTE: The above description of the tract nominated for lease has been provided exclusively by the party nominating the tract for lease. The Louisiana State Mineral Board makes no representation as to the accuracy of the description of the nominated tract or its suitability for lease. The Louisiana State Mineral Board has made no inspection of the nominated tract for the existence of conflicting leases, operating agreements, private claims or other existing or future obligations or conditions which may affect all or any portion of the nominated tract or its suitability for lease.

Maps depicting the nominated tract, containing the bearings, distances and coordinates of the nominated tract based on the Louisiana Coordinate System of 1927, North or South Zone, as applicable, are available for public inspection and review at the offices of the Louisiana State Mineral Board from 10:00 a.m. to 3:00 p.m. Monday - Friday.

In the event of conflict between the description of the nominated tract set forth above and the description of the nominated property as contained on the maps maintained at the offices of the Louisiana State Mineral Board, the Louisiana State Mineral Board maps shall prevail and shall provide the final property description of the lease to be awarded of the nominated tract.

Any mineral lease of the nominated tract by the Louisiana State Mineral Board shall be without warranty of any kind, either express, implied, or statutory, including, but not limited to, the implied warranties or merchantability and fitness for a particular purpose. Should the mineral lease of the nominated tract awarded by the Louisiana State Mineral Board be subsequently modified, cancelled or abrogated due to the existence of conflicting leases, operating agreements, private claims or other existing or future obligations or conditions which may affect all or any portion of

the leased tract, it shall not relieve the Lessee of the obligation to pay any bonus due thereon to the Louisiana State Mineral Board, nor shall the Louisiana State Mineral Board be obligated to refund any consideration paid by the Lessee prior to such modification, cancellation, or abrogation, including, but not limited to, bonuses, rents and royalties.

NOTE: The State of Louisiana does hereby reserve, and this lease shall be subject to, the imprescriptible right of surface use in the nature of a servitude in favor of the Department of Natural Resources, including its Offices and Commissions, for the sole purpose of implementing, constructing, servicing and maintaining approved coastal zone management and/or restoration projects. Utilization of any and all rights derived under this lease by the mineral lessee, its agents, successors or assigns, shall not interfere with nor hinder the reasonable surface use by the Department of Natural Resources, its Offices or Commissions, as hereinabove reserved.

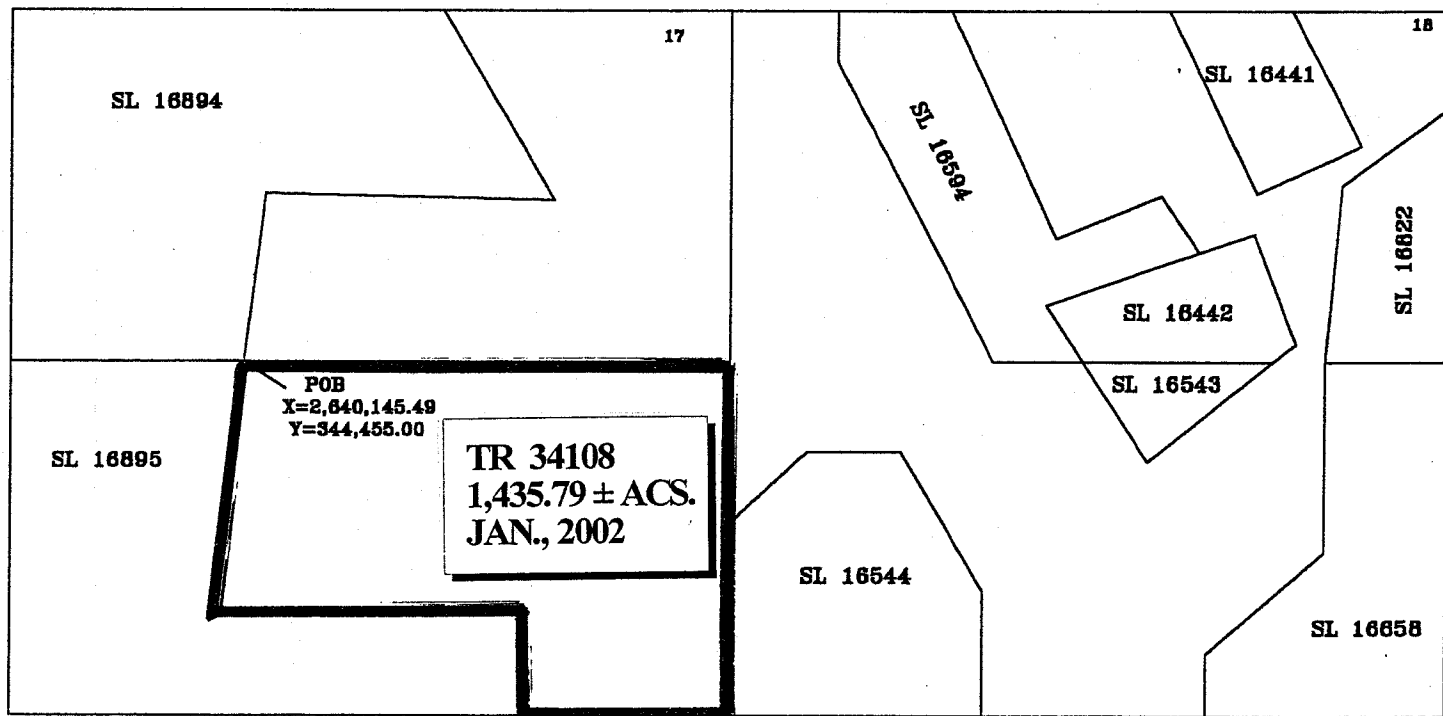
Applicant: Cummings Land Service

Bidder	Cash Payment	Price / Acre	Rental	Oil	Gas	Other



SCALE: 1" = 4,000'

BRETON SOUND AREA
PLAQUEMINES PARISH



TRACT 34109 - Plaquemines Parish, Louisiana

All of the lands now or formerly constituting the beds and bottoms of all water bodies of every nature and description and all islands and other lands formed by accretion or reliction, except tax lands, owned by and not under mineral lease from the State of Louisiana on January 9, 2002, situated in Plaquemines Parish, Louisiana, within the following described boundaries: Beginning at a point having Coordinates of X = 2,650,100.00 and Y = 337,080.00, said point also being the Southeast corner of Block 17, Breton Sound Area; thence West 4,230.00 feet on and along the South line of said Block 17, Breton Sound Area, to a point having Coordinates of X = 2,645,870.00 and Y = 337,080.00, said point also being on an Eastern boundary of State of Louisiana - State Lease No. 16895; thence on and along the Eastern and Northern boundaries of said State of Louisiana - State Lease No. 16895 the following courses and distances, to-wit: North 01 degrees 58 minutes 13 seconds East 2,181.29 feet to a point having Coordinates of X = 2,645,945.00 and Y = 339,260.00; West 6,450 feet to a point having Coordinates of X = 2,639,495.00 and Y = 339,260.00; and North 07 degrees 08 minutes 14 seconds East 5,235.57 feet to a point having Coordinates of X = 2,640,145.49 and Y = 344,455.00, said point also being a Northeast corner of said State of Louisiana - State Lease No. 16895 and a Southeast corner of State of Louisiana - State Lease No. 16894; thence on and along the Eastern and Southern boundaries of said State of Louisiana - State Lease No. 16894 the following courses and distances, to-wit: North 07 degrees 08 minutes 14 seconds East 3,537.41 feet to a point having Coordinates of X = 2,640,585.00 and Y = 347,965.00; and South 88 degrees 47 minutes 25 seconds East 5,921.32 feet to a point having Coordinates of X = 2,646,505.00 and Y = 347,840.00, said point also being a Southeast corner of said State of Louisiana - State Lease No. 16894; thence South 88 degrees 47 minutes 25 seconds East 3,595.80 feet to a point having Coordinates of X = 2,650,100.00 and Y = 347,764.09, said point also being on the East line of said Block 17, Breton Sound Area; thence South 10,684.09 feet on and along said East line of said Block 17, Breton Sound Area, to the point of beginning, containing approximately **2,198.26 acres**, as shown outlined on a plat on file in the Office of Mineral Resources, Department of Natural Resources, as provided by the applicant. All bearings, distances and coordinates are based on Louisiana Coordinate System of 1927 (South Zone).

NOTE: The above description of the tract nominated for lease has been provided exclusively by the party nominating the tract for lease. The Louisiana State Mineral Board makes no representation as to the accuracy of the description of the nominated tract or its suitability for lease. The Louisiana State Mineral Board has made no inspection of the nominated tract for the existence of conflicting leases, operating agreements, private claims or other existing or future obligations or conditions which may affect all or any portion of the nominated tract or its suitability for lease. Maps depicting the nominated tract, containing the bearings, distances and coordinates of the nominated tract based on the Louisiana Coordinate System of 1927, North or South Zone, as applicable, are available for public inspection and review at the offices of the Louisiana State Mineral Board from 10:00 a.m. to 3:00 p.m. Monday - Friday.

In the event of conflict between the description of the nominated

tract set forth above and the description of the nominated property as contained on the maps maintained at the offices of the Louisiana State Mineral Board, the Louisiana State Mineral Board maps shall prevail and shall provide the final property description of the lease to be awarded of the nominated tract.

Any mineral lease of the nominated tract by the Louisiana State Mineral Board shall be without warranty of any kind, either express, implied, or statutory, including, but not limited to, the implied warranties or merchantability and fitness for a particular purpose. Should the mineral lease of the nominated tract awarded by the Louisiana State Mineral Board be subsequently modified, cancelled or abrogated due to the existence of conflicting leases, operating agreements, private claims or other existing of future obligations or conditions which may affect all or any portion of the leased tract, it shall not relieve the Lessee of the obligation to pay any bonus due thereon to the Louisiana State Mineral Board, nor shall the Louisiana State Mineral Board be obligated to refund any consideration paid by the Lessee prior to such modification, cancellation, or abrogation, including, but not limited to, bonuses, rents and royalties.

NOTE: It appears, according to our records, that a portion of this tract is located within the restrictive safety fairway area as set out by the Corps of Engineers, U.S. Army.

NOTE: The State of Louisiana does hereby reserve, and this lease shall be subject to, the imprescriptible right of surface use in the nature of a servitude in favor of the Department of Natural Resources, including its Offices and Commissions, for the sole purpose of implementing, constructing, servicing and maintaining approved coastal zone management and/or restoration projects. Utilization of any and all rights derived under this lease by the mineral lessee, its agents, successors or assigns, shall not interfere with nor hinder the reasonable surface use by the Department of Natural Resources, its Offices or Commissions, as hereinabove reserved.

Applicant: Robert A. Schroeder, Inc.

Bidder	Cash Payment	Price / Acre	Rental	Oil	Gas	Other

ST. BERNARD PARISH
PLAQUEMINES PARISHAPPROXIMATE LOCATION
OF PARISH LINE

BLK 9

BLOCK 16

BLK 15

Pago Prod.
SI 8781

SL 16593

SL 16594

Placid
SI 4925

S.L. 16894

BRETON SOUND

MISSISSIPPI RIVER-GULF OUTLET
SAFETY FAIRWAYBalco Energy
SI 8976X = 2,646,505
Y = 347,840

S88° 47' 25" E

5921.32'

3595.80'

Total Pet.
SI 11938Ballard & Cordell
SI 8976X = 2,640,585
Y = 347,965California
SI 4311

BLOCK 17

X = 2,640,145.49
Y = 344,455.00TR 34109
2,198.26 ± ACS.
JAN., 2002Sanedon Oil Corp.
SI 7895

SI 7895

N07° 08' 14" E

5235.57'

S.L. 16895

Sanedon Oil
SI 7895X = 2,645,945
Y = 339,260

6450'

WEST

X = 2,639,495
Y = 339,260N01° 58' 13" E
2181.29'

10684.09'

SOUTH

LOG
SI 16844NODCOE
SPD SITE

SL 16544

P.O.B.

X = 2,650,100
Y = 337,080Kerr McGee Corp.
SI 8783

SI 8783

X = 2,645,870
Y = 337,080

WEST

Kerr McGee
SI 1218
1B

4230'

BLK 21

BLOCK 32

SL 1227

BLK 31

ALL COORDINATES, BEARINGS AND DISTANCES
ARE GRID, AND ARE ON THE LOUISIANA
LAMBERT PLANE COORDINATE SYSTEM,
SOUTH ZONE, 1927 NORTH AMERICAN
DATUM.LOCATED IN
BLOCK 17
BRETON SOUND AREA
PLAQUEMINES PARISH, LOUISIANA
SCALE 1" = 3000'

3000' 0' 3000' 6000'

SCALE

TRACT 34110 - PORTION OF BLOCK 18, BRETON SOUND AREA, Plaquemines Parish, Louisiana

All of the lands now or formerly constituting the beds and bottoms of all water bodies of every nature and description and all islands and other lands formed by accretion or reliction, except tax lands, belonging to the State of Louisiana and not under mineral lease on January 9, 2002, situated in Plaquemines Parish, Louisiana, and more particularly described as follows: Beginning at a point within Block 18, Breton Sound Area, being the South point of State Lease No. 16543 having Coordinates of X = 2,658,750.00 and Y = 342,380.00; thence South 5,300.00 feet to a point on the South line of said Block 18 having Coordinates of X = 2,658,750.00 and Y = 337,080.00; thence West 3,450.00 feet along the South line of said Block 18 to the Southeast corner of State Lease No. 16544 having Coordinates of X = 2,655,300.00 and Y = 337,080.00; thence along the boundaries of said State Lease No. 16544 the following courses: North 2,600.00 feet, North 30 degrees 22 minutes 45 seconds West 3,361.55 feet, West 1,900.00 feet and South 46 degrees 50 minutes 51 seconds West 2,193.17 feet to a point on the West line of said Block 18 having Coordinates of X = 2,650,100.00 and Y = 341,080.00; thence North 10,750.00 feet to the Northwest corner of said Block 18 having Coordinates of X = 2,650,100.00 and Y = 351,830.00; thence East 2,200.00 feet along the North line of said Block 18 to the Northwest corner of State Lease No. 16594 having Coordinates of X = 2,652,300.00 and Y = 351,830.00; thence along the boundaries of said State Lease No. 16594 the following courses: South 1,000.00 feet, South 27 degrees 01 minutes 11 seconds East 7,043.84 feet and East 1,877.00 feet to a point common to said State Lease No. 16594, State Lease No. 16442 and State Lease No. 16443 having Coordinates of X = 2,657,377.00 and Y = 344,455.00; thence South 33 degrees 29 minutes 31 seconds East 2,488.12 feet to the point of beginning, containing approximately **1,462.33 acres**, as shown outlined on a plat on file in the Office of Mineral Resources, Department of Natural Resources, as provided by the applicant. All bearings, distances and coordinates are based on Louisiana Coordinate System of 1927 (South Zone).

NOTE: The above description of the tract nominated for lease has been provided exclusively by the party nominating the tract for lease. The Louisiana State Mineral Board makes no representation as to the accuracy of the description of the nominated tract or its suitability for lease. The Louisiana State Mineral Board has made no inspection of the nominated tract for the existence of conflicting leases, operating agreements, private claims or other existing or future obligations or conditions which may affect all or any portion of the nominated tract or its suitability for lease.

Maps depicting the nominated tract, containing the bearings, distances and coordinates of the nominated tract based on the Louisiana Coordinate System of 1927, North or South Zone, as applicable, are available for public inspection and review at the offices of the Louisiana State Mineral Board from 10:00 a.m. to 3:00 p.m. Monday - Friday.

In the event of conflict between the description of the nominated tract set forth above and the description of the nominated property as contained on the maps maintained at the offices of the Louisiana State Mineral Board, the Louisiana State Mineral Board maps shall prevail and shall provide the final property description of the

lease to be awarded of the nominated tract.

Any mineral lease of the nominated tract by the Louisiana State Mineral Board shall be without warranty of any kind, either express, implied, or statutory, including, but not limited to, the implied warranties or merchantability and fitness for a particular purpose. Should the mineral lease of the nominated tract awarded by the Louisiana State Mineral Board be subsequently modified, cancelled or abrogated due to the existence of conflicting leases, operating agreements, private claims or other existing of future obligations or conditions which may affect all or any portion of the leased tract, it shall not relieve the Lessee of the obligation to pay any bonus due thereon to the Louisiana State Mineral Board, nor shall the Louisiana State Mineral Board be obligated to refund any consideration paid by the Lessee prior to such modification, cancellation, or abrogation, including, but not limited to, bonuses, rents and royalties.

NOTE: It appears, according to our records, that a portion of this tract is located within the restrictive safety fairway area as set out by the Corps of Engineers, U.S. Army.

NOTE: The State of Louisiana does hereby reserve, and this lease shall be subject to, the imprescriptible right of surface use in the nature of a servitude in favor of the Department of Natural Resources, including its Offices and Commissions, for the sole purpose of implementing, constructing, servicing and maintaining approved coastal zone management and/or restoration projects. Utilization of any and all rights derived under this lease by the mineral lessee, its agents, successors or assigns, shall not interfere with nor hinder the reasonable surface use by the Department of Natural Resources, its Offices or Commissions, as hereinabove reserved.

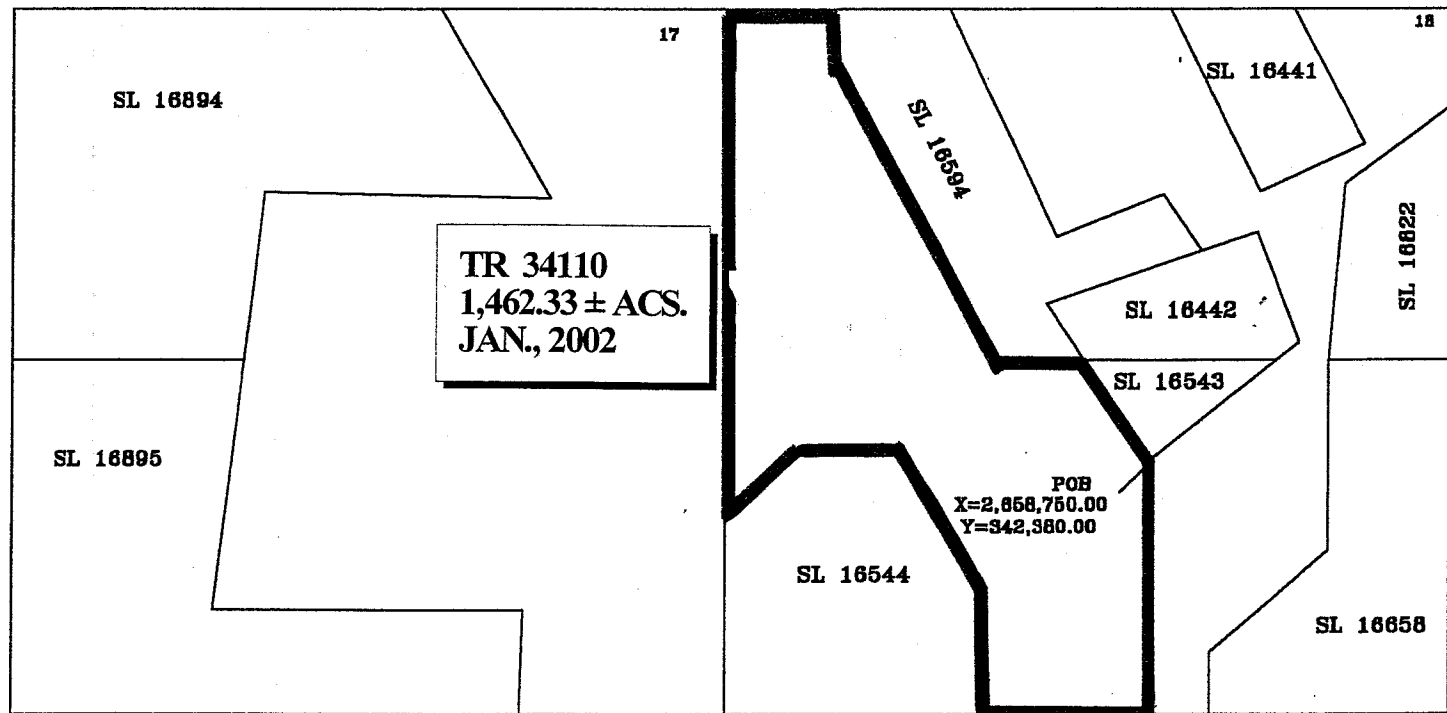
Applicant: Cummings Land Service

Bidder	Cash Payment	Price / Acre	Rental	Oil	Gas	Other



SCALE: 1" = 4,000'

BRETON SOUND AREA
PLAQUEMINES PARISH



TRACT 34111 - PORTION OF BLOCK 18, BRETON SOUND AREA, Plaquemines Parish, Louisiana

All of the lands now or formerly constituting the beds and bottoms of all water bodies of every nature and description and all islands and other lands formed by accretion or reliction, except tax lands, belonging to the State of Louisiana and not under mineral lease on January 9, 2002, situated in Plaquemines Parish, Louisiana, and more particularly described as follows: Beginning at a point within Block 18, Breton Sound Area, being the South point of State Lease No. 16543 having Coordinates of X = 2,658,750.00 and Y = 342,380.00; thence North 50 degrees 45 minutes 13 seconds East 3,279.82 feet along the boundary of said State Lease No. 16543 to its Northeast corner and the Southeast corner of State Lease No. 16442 having Coordinates of X = 2,661,290.00 and Y = 344,455.00; thence East 1,060.00 feet to the Northwest corner of State Lease No. 16658 having Coordinates of X = 2,662,350.00 and Y = 344,455.00; thence along the boundaries of said State Lease No. 16658 the following courses: South 3,950.68 feet, South 48 degrees 29 minutes 13 seconds West 3,205.11 feet and South 1,300.00 feet to a point on the South line of said Block 18 and the Southwest corner of said State Lease No. 16658 having Coordinates of X = 2,659,950.00 and Y = 337,080.00; thence West 1,200.00 feet along the South line of said Block 18 to a point having Coordinates of X = 2,658,750.00 and Y = 337,080.00; thence North 5,300.00 feet to the point of beginning, containing approximately **418.86 acres**, as shown outlined on a plat on file in the Office of Mineral Resources, Department of Natural Resources, as provided by the applicant. All bearings, distances and coordinates are based on Louisiana Coordinate System of 1927 (South Zone).

NOTE: The above description of the tract nominated for lease has been provided exclusively by the party nominating the tract for lease. The Louisiana State Mineral Board makes no representation as to the accuracy of the description of the nominated tract or its suitability for lease. The Louisiana State Mineral Board has made no inspection of the nominated tract for the existence of conflicting leases, operating agreements, private claims or other existing or future obligations or conditions which may affect all or any portion of the nominated tract or its suitability for lease.

Maps depicting the nominated tract, containing the bearings, distances and coordinates of the nominated tract based on the Louisiana Coordinate System of 1927, North or South Zone, as applicable, are available for public inspection and review at the offices of the Louisiana State Mineral Board from 10:00 a.m. to 3:00 p.m. Monday - Friday.

In the event of conflict between the description of the nominated tract set forth above and the description of the nominated property as contained on the maps maintained at the offices of the Louisiana State Mineral Board, the Louisiana State Mineral Board maps shall prevail and shall provide the final property description of the lease to be awarded of the nominated tract.

Any mineral lease of the nominated tract by the Louisiana State Mineral Board shall be without warranty of any kind, either express, implied, or statutory, including, but not limited to, the implied warranties or merchantability and fitness for a particular purpose. Should the mineral lease of the nominated tract awarded