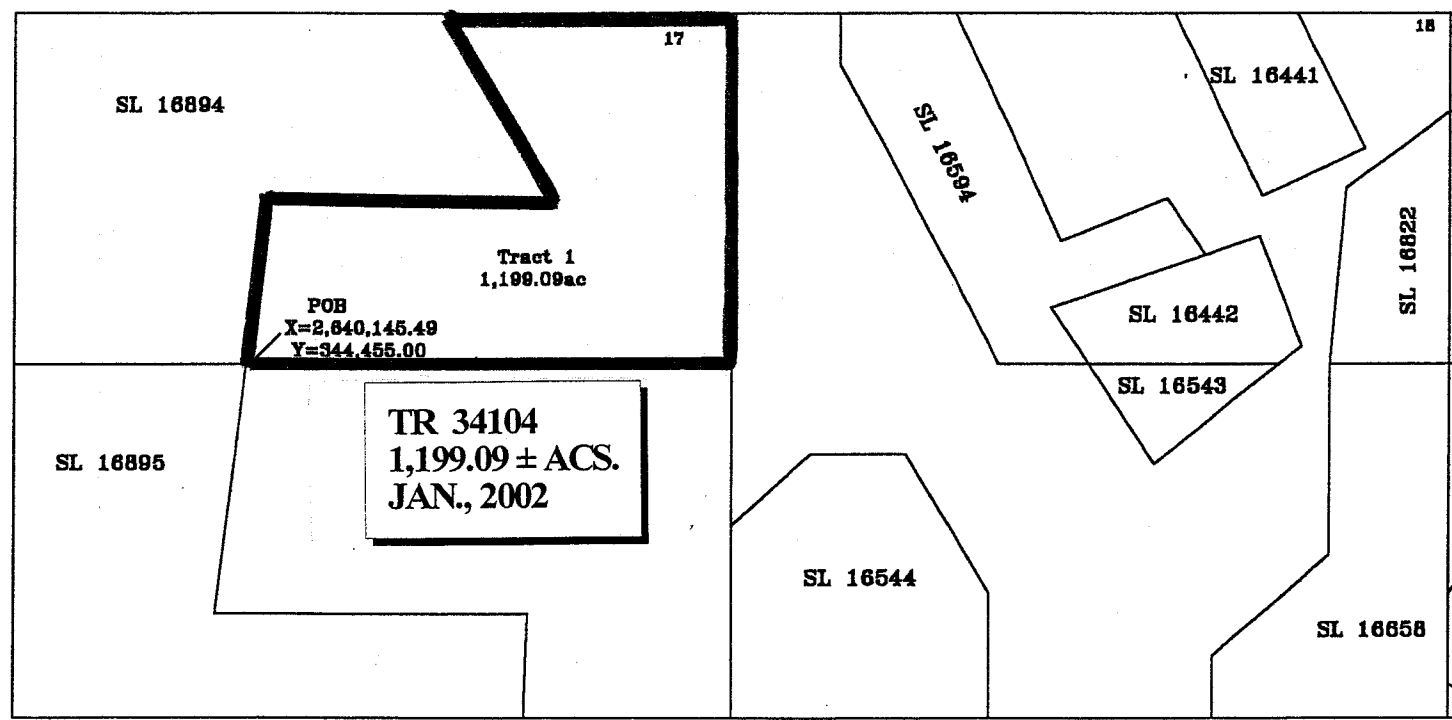




SCALE: 1" = 4,000'

BRETON SOUND AREA
PLAQUEMINES PARISH



TRACT 34105 - PORTION OF BLOCK 17, BRETON SOUND AREA, Plaquemines Parish, Louisiana

All of the lands now or formerly constituting the beds and bottoms of all water bodies of every nature and description and all islands and other lands formed by accretion or reliction, except tax lands, belonging to the State of Louisiana and not under mineral lease on January 9, 2002, situated in Plaquemines Parish, Louisiana, and more particularly described as follows: Beginning at a point having Coordinates of X = 2,650,100.00 and Y = 351,830.00, said point also being the Northeast corner of Block 17, Breton Sound Area; thence South 4,065.91 feet on and along the East line of said Block 17, Breton Sound Area, to a point having Coordinates of X = 2,650,100.00 and Y = 347,764.09; thence North 88 degrees 47 minutes 25 seconds West 3,595.80 feet to a point having Coordinates of X = 2,646,505.00 and Y = 347,840.00, said point also being a Southeast corner of State of Louisiana - State Lease No. 16894; thence North 29 degrees 41 minutes 27 seconds West 4,593.01 feet on and along an Eastern boundary of said State of Louisiana - State Lease No. 16894 to a point having Coordinates of X = 2,644,230.00 and Y = 351,830.00, said point also being on the North line of said Block 17, Breton Sound Area; thence East 5,870.00 feet on and along said North line of said Block 17, Breton Sound Area, to the point of beginning, containing approximately **436.62 acres**, as shown outlined on a plat on file in the Office of Mineral Resources, Department of Natural Resources, as provided by the applicant. All bearings, distances and coordinates are based on Louisiana Coordinate System of 1927 (South Zone).

NOTE: The above description of the tract nominated for lease has been provided exclusively by the party nominating the tract for lease. The Louisiana State Mineral Board makes no representation as to the accuracy of the description of the nominated tract or its suitability for lease. The Louisiana State Mineral Board has made no inspection of the nominated tract for the existence of conflicting leases, operating agreements, private claims or other existing or future obligations or conditions which may affect all or any portion of the nominated tract or its suitability for lease.

Maps depicting the nominated tract, containing the bearings, distances and coordinates of the nominated tract based on the Louisiana Coordinate System of 1927, North or South Zone, as applicable, are available for public inspection and review at the offices of the Louisiana State Mineral Board from 10:00 a.m. to 3:00 p.m. Monday - Friday.

In the event of conflict between the description of the nominated tract set forth above and the description of the nominated property as contained on the maps maintained at the offices of the Louisiana State Mineral Board, the Louisiana State Mineral Board maps shall prevail and shall provide the final property description of the lease to be awarded of the nominated tract.

Any mineral lease of the nominated tract by the Louisiana State Mineral Board shall be without warranty of any kind, either express, implied, or statutory, including, but not limited to, the implied warranties or merchantability and fitness for a particular purpose. Should the mineral lease of the nominated tract awarded by the Louisiana State Mineral Board be subsequently modified, cancelled or abrogated due to the existence of conflicting leases,

operating agreements, private claims or other existing of future obligations or conditions which may affect all or any portion of the leased tract, it shall not relieve the Lessee of the obligation to pay any bonus due thereon to the Louisiana State Mineral Board, nor shall the Louisiana State Mineral Board be obligated to refund any consideration paid by the Lessee prior to such modification, cancellation, or abrogation, including, but not limited to, bonuses, rents and royalties.

NOTE: It appears, according to our records, that a portion of this tract is located within the restrictive safety fairway area as set out by the Corps of Engineers, U.S. Army.

NOTE: The State of Louisiana does hereby reserve, and this lease shall be subject to, the imprescriptible right of surface use in the nature of a servitude in favor of the Department of Natural Resources, including its Offices and Commissions, for the sole purpose of implementing, constructing, servicing and maintaining approved coastal zone management and/or restoration projects. Utilization of any and all rights derived under this lease by the mineral lessee, its agents, successors or assigns, shall not interfere with nor hinder the reasonable surface use by the Department of Natural Resources, its Offices or Commissions, as hereinabove reserved.

Applicant: Robert A. Schroeder, Inc.

Bidder	Cash Payment	Price / Acre	Rental	Oil	Gas	Other

BLK 9

BLOCK 16

Pago Prod.
St 8781

Placid
St 4925

APPROXIMATE LOCATION
OF PARISH LINE

MISSISSIPPI RIVER-GULF OUTLET
SAFETY FAIRWAY

P.O.B

$$\begin{array}{r} X = 2,650,100 \\ Y = 351,830 \end{array}$$

EAST

SL 16593

BLK 15

SL 16594

S.L. 16894

S.L. 16894
BRETON SOUND

TR 34105
436.62 ± ACS.
JAN., 2002

Balco Energy
SI 8976

Total Pet.
\$1,1838

Ballard & Cordell
SI 8976

X = 2,646,505
Y = 347,840

California
St 4311
1

3595. 801

N88° 47' 25" W

X = 2,650,100.00
Y = 347,764.09

BLOCK 18

BLOCK 17

Sanedan Oil Corp.
SI 12046

Kerr McGee
SI 5415

Samedan Oil Corp.
SI 7895

S.L. 16895

NODCOE -
SPD SITE

SL 16544

Kerr McGee
SI 1218
1B

Kerr McGee Corp.
SI 8783

BLK 21

BLOCK 32

SL 1227

BLK 31

LOCATED IN
BLOCK 17
BRETON SOUND AREA
PLAQUEMINES PARISH, LOUISIANA
SCALE 1" = 3000'

ALL COORDINATES, BEARINGS AND DISTANCES
ARE GRID, AND ARE ON THE LOUISIANA
LAMBERT PLANE COORDINATE SYSTEM,
SOUTH ZONE, 1927 NORTH AMERICAN
DATUM.



3000' 0' 3000' 6000'

SCALE

TRACT 34106 - PORTION OF BLOCK 18, BRETON SOUND AREA, Plaquemines Parish, Louisiana

All of the lands now or formerly constituting the beds and bottoms of all water bodies of every nature and description and all islands and other lands formed by accretion or reliction, except tax lands, belonging to the State of Louisiana and not under mineral lease on January 9, 2002, situated in Plaquemines Parish, Louisiana, and more particularly described as follows: Beginning at the Northeast corner of State Lease No. 16594 having Coordinates of X = 2,654,600.00 and Y = 351,830.00; thence East 4,550.00 feet along the North line of said Block 18 to the Northwest corner of State Lease No. 16441 having Coordinates of X = 2,659,150.00 and Y = 351,830.00; thence along the boundaries of said State Lease No. 16441 the following courses: South 25 degrees 03 minutes 27 seconds East 4,250.00 feet, North 64 degrees 51 minutes 03 seconds East 2,353.06 feet and North 26 degrees 28 minutes 43 seconds West 3,188.64 feet to its Northeast corner and a point on the North line of said Block 18 having Coordinates of X = 2,661,650.00 and Y = 351,830.00; thence East 3,200.00 feet along the North line of said Block 18 to its Northeast corner having Coordinates of X = 2,664,850.00 and Y = 351,830.00; thence South 2,075.00 feet along the East line of said Block 18 to the Northeast corner of State Lease No. 16822 having Coordinates of X = 2,664,850.00 and Y = 349,755.00; thence along the boundaries of said State Lease No. 16822 the following courses: South 53 degrees 15 minutes 14 seconds West 2,700.00 feet and South 05 degrees 13 minutes 05 seconds West 3,700.00 feet to its Southwest corner having Coordinates of X = 2,662,350.00 and Y = 344,455.00; thence West 1,060.00 feet to the Southwest corner of State Lease No. 16442; thence along the boundaries of said State Lease No. 16442 and State Lease No. 16594 the following courses: North 50 degrees 48 minutes 45 seconds East 593.49 feet, North 20 degrees 16 minutes 57 seconds West 2,452.04 feet, South 70 degrees 46 minutes 10 seconds West 1,186.67 feet, North 33 degrees 12 minutes 33 seconds West 1,423.32 feet and North 24 degrees 37 minutes 25 seconds West 5,280.15 feet to the point of beginning, containing approximately **754.34 acres**, as shown outlined on a plat on file in the Office of Mineral Resources, Department of Natural Resources, as provided by the applicant. All bearings, distances and coordinates are based on Louisiana Coordinate System of 1927 (South Zone).

NOTE: The above description of the tract nominated for lease has been provided exclusively by the party nominating the tract for lease. The Louisiana State Mineral Board makes no representation as to the accuracy of the description of the nominated tract or its suitability for lease. The Louisiana State Mineral Board has made no inspection of the nominated tract for the existence of conflicting leases, operating agreements, private claims or other existing or future obligations or conditions which may affect all or any portion of the nominated tract or its suitability for lease. Maps depicting the nominated tract, containing the bearings, distances and coordinates of the nominated tract based on the Louisiana Coordinate System of 1927, North or South Zone, as applicable, are available for public inspection and review at the offices of the Louisiana State Mineral Board from 10:00 a.m. to 3:00 p.m. Monday - Friday. In the event of conflict between the description of the nominated tract set forth above and the description of the nominated property

as contained on the maps maintained at the offices of the Louisiana State Mineral Board, the Louisiana State Mineral Board maps shall prevail and shall provide the final property description of the lease to be awarded of the nominated tract.

Any mineral lease of the nominated tract by the Louisiana State Mineral Board shall be without warranty of any kind, either express, implied, or statutory, including, but not limited to, the implied warranties or merchantability and fitness for a particular purpose. Should the mineral lease of the nominated tract awarded by the Louisiana State Mineral Board be subsequently modified, cancelled or abrogated due to the existence of conflicting leases, operating agreements, private claims or other existing or future obligations or conditions which may affect all or any portion of the leased tract, it shall not relieve the Lessee of the obligation to pay any bonus due thereon to the Louisiana State Mineral Board, nor shall the Louisiana State Mineral Board be obligated to refund any consideration paid by the Lessee prior to such modification, cancellation, or abrogation, including, but not limited to, bonuses, rents and royalties.

NOTE: It appears, according to our records, that a portion of this tract is located within the restrictive safety fairway area as set out by the Corps of Engineers, U.S. Army.

NOTE: The State of Louisiana does hereby reserve, and this lease shall be subject to, the imprescriptible right of surface use in the nature of a servitude in favor of the Department of Natural Resources, including its Offices and Commissions, for the sole purpose of implementing, constructing, servicing and maintaining approved coastal zone management and/or restoration projects. Utilization of any and all rights derived under this lease by the mineral lessee, its agents, successors or assigns, shall not interfere with nor hinder the reasonable surface use by the Department of Natural Resources, its Offices or Commissions, as hereinabove reserved.

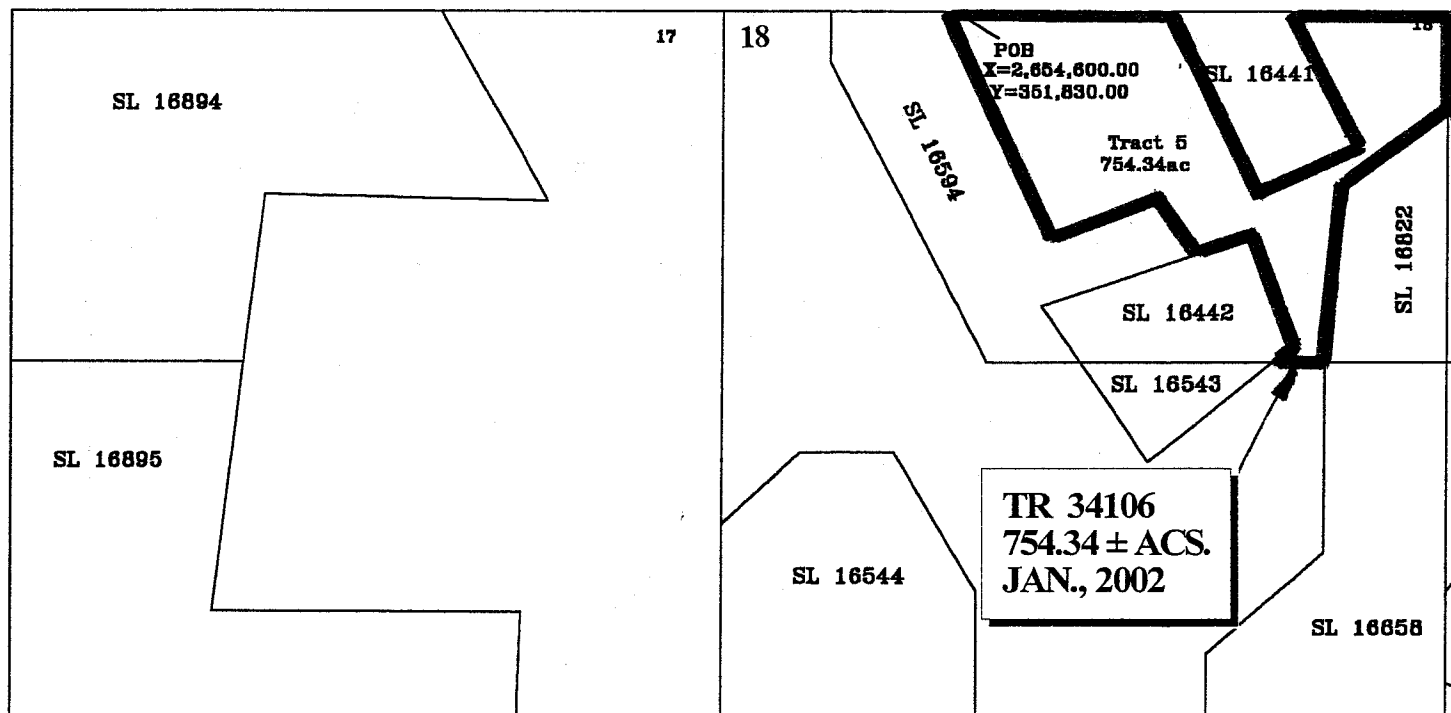
Applicant: Cummings Land Service

Bidder	Cash Payment	Price / Acre	Rental	Oil	Gas	Other



SCALE: 1" = 4,000'

BRETON SOUND AREA
PLAQUEMINES PARISH



TRACT 34107 - PORTION OF BLOCK 19, BRETON SOUND AREA, Plaquemines Parish, Louisiana

All of the lands now or formerly constituting the beds and bottoms of all water bodies of every nature and description and all islands and other lands formed by accretion or reliction, except tax lands, belonging to the State of Louisiana and not under mineral lease on January 9, 2002, situated in Plaquemines Parish, Louisiana, and more particularly described as follows: Beginning at the Southwest corner of State Lease No. 16823 having Coordinates of X = 2,674,200.00 and Y = 345,830.00; thence along the boundaries of said State Lease No. 16823 the following courses: East 4,000.00 feet, North 19 degrees 05 minutes 37 seconds West 2,751.36 feet and West 3,100.00 feet to its Northwest corner having Coordinates of X = 2,674,200.00 and Y = 348,430.00; thence North 3,400.00 feet to a point on the North line of said Block 19 having Coordinates of X = 2,674,200.00 and Y = 351,830.00; thence along the North line of said Block 19 to its Northeast corner having Coordinates of X = 2,679,600.00 and Y = 351,830.00; thence South 10,360.00 feet along the East line of said Block 19 to the Northeast corner of State Lease No. 16611; thence along the boundaries of said State Lease No. 16611 the following courses: West 1,700.00 feet, South 3,150.00 feet and East 1,700.00 feet to its Southeast corner having Coordinates of X = 2,679,600.00 and Y = 338,320.00; thence South to the Southeast corner of said Block 19 having Coordinates of X = 2,679,600.00 and Y = 337,080.00; thence West along the South line of said Block 19 to the Southeast corner of State Lease No. 16612 having Coordinates of X = 2,677,020.00 and Y = 337,080.00; thence along the boundaries of said State Lease No. 16612 the following courses: North 07 degrees 00 minutes 00 seconds West 4,300.00 feet, North 32 degrees 29 minutes 06 seconds West 3,683.38 feet and West 317.70 feet to a point on the North line of said State Lease No. 16612 having Coordinates of X = 2,674,200.00 and Y = 344,455.00; thence North to the point of beginning, containing approximately 1,149.85 acres, as shown outlined on a plat on file in the Office of Mineral Resources, Department of Natural Resources, as provided by the applicant. All bearings, distances and coordinates are based on Louisiana Coordinate System of 1927 (South Zone).

NOTE: The above description of the tract nominated for lease has been provided exclusively by the party nominating the tract for lease. The Louisiana State Mineral Board makes no representation as to the accuracy of the description of the nominated tract or its suitability for lease. The Louisiana State Mineral Board has made no inspection of the nominated tract for the existence of conflicting leases, operating agreements, private claims or other existing or future obligations or conditions which may affect all or any portion of the nominated tract or its suitability for lease.

Maps depicting the nominated tract, containing the bearings, distances and coordinates of the nominated tract based on the Louisiana Coordinate System of 1927, North or South Zone, as applicable, are available for public inspection and review at the offices of the Louisiana State Mineral Board from 10:00 a.m. to 3:00 p.m. Monday - Friday.

In the event of conflict between the description of the nominated tract set forth above and the description of the nominated property as contained on the maps maintained at the offices of the Louisiana State Mineral Board, the Louisiana State Mineral Board maps shall

prevail and shall provide the final property description of the lease to be awarded of the nominated tract.

Any mineral lease of the nominated tract by the Louisiana State Mineral Board shall be without warranty of any kind, either express, implied, or statutory, including, but not limited to, the implied warranties or merchantability and fitness for a particular purpose. Should the mineral lease of the nominated tract awarded by the Louisiana State Mineral Board be subsequently modified, cancelled or abrogated due to the existence of conflicting leases, operating agreements, private claims or other existing of future obligations or conditions which may affect all or any portion of the leased tract, it shall not relieve the Lessee of the obligation to pay any bonus due thereon to the Louisiana State Mineral Board, nor shall the Louisiana State Mineral Board be obligated to refund any consideration paid by the Lessee prior to such modification, cancellation, or abrogation, including, but not limited to, bonuses, rents and royalties.

NOTE: The State of Louisiana does hereby reserve, and this lease shall be subject to, the imprescriptible right of surface use in the nature of a servitude in favor of the Department of Natural Resources, including its Offices and Commissions, for the sole purpose of implementing, constructing, servicing and maintaining approved coastal zone management and/or restoration projects. Utilization of any and all rights derived under this lease by the mineral lessee, its agents, successors or assigns, shall not interfere with nor hinder the reasonable surface use by the Department of Natural Resources, its Offices or Commissions, as hereinabove reserved.

Applicant: Cummings Land Service

Bidder	Cash Payment	Price / Acre	Rental	Oil	Gas	Other



SCALE: 1" = 4,000'

BRETON SOUND AREA
PLAQUEMINES PARISH

