

TRACT 34098 - PORTION OF BLOCK 10, MAIN PASS AREA, REVISED, St. Bernard Parish, Louisiana

All of the lands now or formerly constituting the beds and bottoms of all water bodies of every nature and description and all islands and other lands formed by accretion or reliction, except tax lands, belonging to the State of Louisiana and not under mineral lease on January 9, 2002, situated in St. Bernard Parish, Louisiana, and more particularly described as follows: Beginning at a point having Coordinates of X = 2,620,600.00 and Y = 366,580.00, said point also being the Northeast corner of Block 10, Main Pass Area, Revised; thence South 2,494.11 feet on and along the East line of said Block 10, Main Pass Area, Revised, to a point having Coordinates of X = 2,620,600.00 and Y = 364,085.89, said point also being on a Northern boundary of State of Louisiana - State Lease No. 16172; thence West 7,375.00 feet on and along said Northern boundary of said State of Louisiana - State Lease No. 16172 to a point having Coordinates of X = 2,613,225.00 and Y = 364,085.89, said point also being a Northeast corner of State of Louisiana - State Lease No. 16632; thence on and along the Northern and Eastern boundaries of said State of Louisiana - State Lease No. 16632 the following courses and distances, to-wit: West 1,777.32 feet to a point having Coordinates of X = 2,611,447.68 and Y = 364,085.89; North 77 degrees 00 minutes 00 seconds West 4,308.10 feet to a point having Coordinates of X = 2,607,250.00 and Y = 365,055.00; and North 1,525.00 feet to a point having Coordinates of X = 2,607,250.00 and Y = 366,580.00, said point also being on the North line of said Block 10, Main Pass Area, Revised; thence East 13,350.00 feet on and along said North line of said Block 10, Main Pass Area, Revised, to the point of beginning, containing approximately 717.69 acres, as shown outlined on a plat on file in the Office of Mineral Resources, Department of Natural Resources, as provided by the applicant. All bearings, distances and coordinates are based on Louisiana Coordinate System of 1927 (South Zone).

NOTE: The above description of the tract nominated for lease has been provided exclusively by the party nominating the tract for lease. The Louisiana State Mineral Board makes no representation as to the accuracy of the description of the nominated tract or its suitability for lease. The Louisiana State Mineral Board has made no inspection of the nominated tract for the existence of conflicting leases, operating agreements, private claims or other existing or future obligations or conditions which may affect all or any portion of the nominated tract or its suitability for lease.

Maps depicting the nominated tract, containing the bearings, distances and coordinates of the nominated tract based on the Louisiana Coordinate System of 1927, North or South Zone, as applicable, are available for public inspection and review at the offices of the Louisiana State Mineral Board from 10:00 a.m. to 3:00 p.m. Monday - Friday.

In the event of conflict between the description of the nominated tract set forth above and the description of the nominated property as contained on the maps maintained at the offices of the Louisiana State Mineral Board, the Louisiana State Mineral Board maps shall prevail and shall provide the final property description of the lease to be awarded of the nominated tract.

Any mineral lease of the nominated tract by the Louisiana State Mineral Board shall be without warranty of any kind, either

express, implied, or statutory, including, but not limited to, the implied warranties or merchantability and fitness for a particular purpose. Should the mineral lease of the nominated tract awarded by the Louisiana State Mineral Board be subsequently modified, cancelled or abrogated due to the existence of conflicting leases, operating agreements, private claims or other existing of future obligations or conditions which may affect all or any portion of the leased tract, it shall not relieve the Lessee of the obligation to pay any bonus due thereon to the Louisiana State Mineral Board, nor shall the Louisiana State Mineral Board be obligated to refund any consideration paid by the Lessee prior to such modification, cancellation, or abrogation, including, but not limited to, bonuses, rents and royalties.

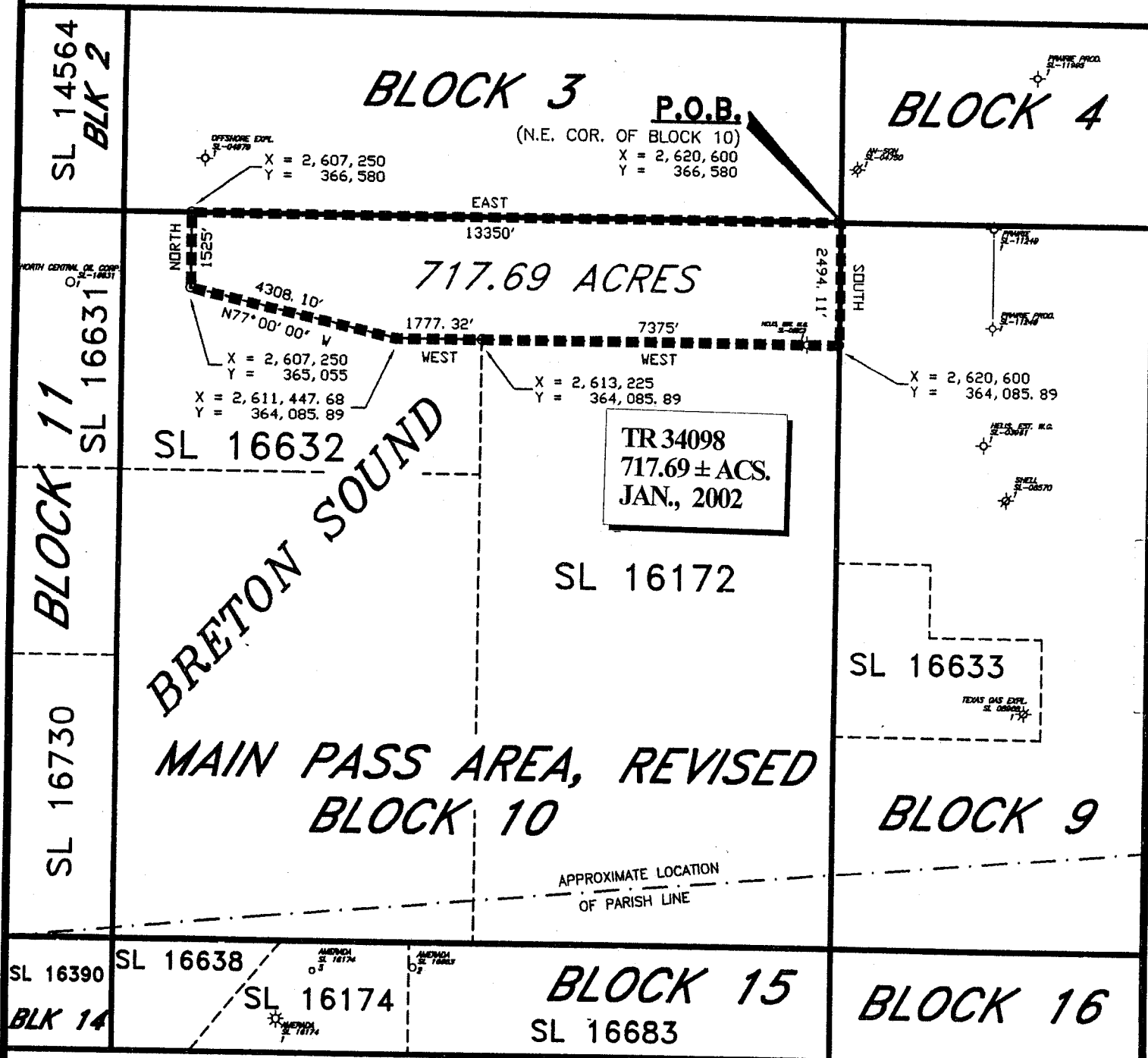
NOTE: The above tract is located in or near an oyster restricted area and all operations in such area must be conducted in strict conformity with the stipulations and/or regulations of the Louisiana Department of Wildlife and Fisheries.

NOTE: It appears, according to our records, that a portion of this tract is located within the restrictive safety fairway area as set out by the Corps of Engineers, U.S. Army.

NOTE: The State of Louisiana does hereby reserve, and this lease shall be subject to, the imprescriptible right of surface use in the nature of a servitude in favor of the Department of Natural Resources, including its Offices and Commissions, for the sole purpose of implementing, constructing, servicing and maintaining approved coastal zone management and/or restoration projects. Utilization of any and all rights derived under this lease by the mineral lessee, its agents, successors or assigns, shall not interfere with nor hinder the reasonable surface use by the Department of Natural Resources, its Offices or Commissions, as hereinabove reserved.

Applicant: Robert A. Schroeder, Inc.

Bidder	Cash Payment	Price / Acre	Rental	Oil	Gas	Other



ALL COORDINATES, BEARINGS AND DISTANCES ARE GRID, AND ARE ON THE LOUISIANA LAMBERT PLANE COORDINATE SYSTEM, SOUTH ZONE, 1927 NORTH AMERICAN DATUM.



LOCATED IN
BLOCK 10
MAIN PASS AREA, REVISED
ST. BERNARD PARISH, LOUISIANA
SCALE 1" = 3000'



TRACT 34099 - PORTION OF BLOCK 11, MAIN PASS AREA, REVISED, St. Bernard Parish, Louisiana

All of the lands now or formerly constituting the beds and bottoms of all water bodies of every nature and description and all islands and other lands formed by accretion or reliction, except tax lands, belonging to the State of Louisiana and not under mineral lease on January 9, 2002, situated in St. Bernard Parish, Louisiana, and more particularly described as follows: Beginning at a point having Coordinates of X = 2,591.100.00 and Y = 351,830.00, said point also being the Southwest corner of Block 11, Main Pass Area, Revised; thence North 7,375.00 feet on and along the West line of said Block 11, Main Pass Area, Revised, to a point having Coordinates of X = 2,591,100.00 and Y = 359,205.00; thence East 14,750.00 feet to a point having Coordinates of X = 2,605,850.00 and Y = 359,205.00, said point also being on the East line of said Block 11; thence South 1,675.00 feet on and along said East line of said Block 11, Main Pass Area, Revised, to a point having Coordinates of X = 2,605,850.00 and Y = 357,530.00, said point also being on a Northern boundary of State of Louisiana - State Lease No. 16730; thence on and along the Northern and Western boundaries of said State of Louisiana - State Lease No. 16730 the following courses and distances, to-wit: West 3,600.00 feet to a point having Coordinates of X = 2,602,250.00 and Y = 357,530.00; South 3,200.00 feet to a point having Coordinates of X = 2,602,250.00 and Y = 354,330.00; West 1,600.00 feet to a point having Coordinates of X = 2,600,650.00 and Y = 354,330.00; and South 2,500.00 feet to a point having Coordinates of X = 2,600,650.00 and Y = 351,830.00, said point also being on the South line of said Block 11, Main Pass Area, Revised, thence West 9,550.00 feet on and along said South line of said Block 11, Main Pass Area, Revised, to the point of beginning, containing approximately **1,934.37 acres**, as shown outlined on a plat on file in the Office of Mineral Resources, Department of Natural Resources, as provided by the applicant. All bearings, distances and coordinates are based on Louisiana Coordinate System of 1927 (South Zone).

NOTE: The above description of the tract nominated for lease has been provided exclusively by the party nominating the tract for lease. The Louisiana State Mineral Board makes no representation as to the accuracy of the description of the nominated tract or its suitability for lease. The Louisiana State Mineral Board has made no inspection of the nominated tract for the existence of conflicting leases, operating agreements, private claims or other existing or future obligations or conditions which may affect all or any portion of the nominated tract or its suitability for lease.

Maps depicting the nominated tract, containing the bearings, distances and coordinates of the nominated tract based on the Louisiana Coordinate System of 1927, North or South Zone, as applicable, are available for public inspection and review at the offices of the Louisiana State Mineral Board from 10:00 a.m. to 3:00 p.m. Monday - Friday.

In the event of conflict between the description of the nominated tract set forth above and the description of the nominated property as contained on the maps maintained at the offices of the Louisiana State Mineral Board, the Louisiana State Mineral Board maps shall prevail and shall provide the final property description of the lease to be awarded of the nominated tract.

Any mineral lease of the nominated tract by the Louisiana State Mineral Board shall be without warranty of any kind, either express, implied, or statutory, including, but not limited to, the implied warranties or merchantability and fitness for a particular purpose. Should the mineral lease of the nominated tract awarded by the Louisiana State Mineral Board be subsequently modified, cancelled or abrogated due to the existence of conflicting leases, operating agreements, private claims or other existing of future obligations or conditions which may affect all or any portion of the leased tract, it shall not relieve the Lessee of the obligation to pay any bonus due thereon to the Louisiana State Mineral Board, nor shall the Louisiana State Mineral Board be obligated to refund any consideration paid by the Lessee prior to such modification, cancellation, or abrogation, including, but not limited to, bonuses, rents and royalties.

NOTE: The above tract is located in or near an oyster restricted area and all operations in such area must be conducted in strict conformity with the stipulations and/or regulations of the Louisiana Department of Wildlife and Fisheries.

NOTE: The State of Louisiana does hereby reserve, and this lease shall be subject to, the imprescriptible right of surface use in the nature of a servitude in favor of the Department of Natural Resources, including its Offices and Commissions, for the sole purpose of implementing, constructing, servicing and maintaining approved coastal zone management and/or restoration projects. Utilization of any and all rights derived under this lease by the mineral lessee, its agents, successors or assigns, shall not interfere with nor hinder the reasonable surface use by the Department of Natural Resources, its Offices or Commissions, as hereinabove reserved.

Applicant: Robert A. Schroeder, Inc.

Bidder	Cash Payment	Price / Acre	Rental	Oil	Gas	Other

BLOCK 2

BLOCK 3

SL 16324

SL 15483

SL 14564

SL 16630

BLK 1

PASS FERNANDEZ

SL 16631

SL 16632

BLOCK 12

BLOCK 11
MAIN PASS AREA, REVISED

16632

BRETON SOUND

X = 2,591,100
Y = 359,205

$$\begin{aligned} X &= 2,605,850 \\ Y &= 359,205 \end{aligned}$$

EAST
14750

TR 34099
1,934.37 ± ACS.
JAN., 2002

NORTH
7375'

P.O.B.
(S.W. COR. OF BLOCK 11)
X = 2,591,100
Y = 351,830

$$\ddot{Y} = \begin{matrix} 2,600,650 \\ 354,330 \end{matrix} 7$$

3600'
WEST

X = 2,602,250
Y = 357,530

X = 2,605,850
Y = 357,530

3200

X = 2,602,250
Y = 354,330

WEST

25

SL 16730

X = 2,600,650
Y = 351,830

BLOCK 10

APPROXIMATE LOCATION
OF PARISH LINE

95504

BLK 13

BLOCK 14

SL 16733

SL 16390

SL 16638

BLK/15

SL 16174

LOCATED IN
BLOCK 11
MAIN PASS AREA, REVISED
ST. BERNARD PARISH, LOUISIANA
SCALE 1" = 3000'

ALL COORDINATES, BEARINGS AND DISTANCES
ARE GRID, AND ARE ON THE LOUISIANA
LAMBERT PLANE COORDINATE SYSTEM,
SOUTH ZONE, 1927 NORTH AMERICAN
DATUM.



TRACT 34100 - PORTION OF BLOCK 10, MAIN PASS AREA, REVISED, Plaquemines and St. Bernard Parishes, Louisiana

All of the lands now or formerly constituting the beds and bottoms of all water bodies of every nature and description and all islands and other lands formed by accretion or reliction, except tax lands, belonging to the State of Louisiana and not under mineral lease on January 9, 2002, situated in Plaquemines and St. Bernard Parishes, Louisiana, and more particularly described as follows: Beginning at a point having Coordinates of X = 2,613,225.00 and Y = 361,320.00, said point also being on a Southern boundary of State of Louisiana - State Lease No. 16632 and on a Western boundary of State of Louisiana - State Lease No. 16172; thence South 9,490.00 feet on and along said Western boundary of said State of Louisiana - State Lease No. 16172 to a point having Coordinates of X = 2,613,225.00 and Y = 351,830.00, said point also being on the South line of said Block 10, Main Pass Area, Revised; thence West 7,375.00 feet on and along said South line of said Block 10, Main Pass Area, Revised, to a point having Coordinates of X = 2,605,850.00 and Y = 351,830.00, said point also being the Southwest corner of said Block 10, Main Pass Area, Revised; thence North 9,490.00 feet on and along the west line of said Block 10, Main Pass Area, Revised, to a point having Coordinates of X = 2,605,850.00 and Y = 361,320.00, said point also being the Southwest corner of said State of Louisiana - State Lease No. 16632; thence East 7,375.00 feet on and along the Southern boundary of said State of Louisiana - State Lease No. 16632 to the point of beginning, containing approximately 1,606.72 acres, as shown outlined on a plat on file in the Office of Mineral Resources, Department of Natural Resources, as provided by the applicant. All bearings, distances and coordinates are based on Louisiana Coordinate System of 1927 (South Zone).

NOTE: The above description of the tract nominated for lease has been provided exclusively by the party nominating the tract for lease. The Louisiana State Mineral Board makes no representation as to the accuracy of the description of the nominated tract or its suitability for lease. The Louisiana State Mineral Board has made no inspection of the nominated tract for the existence of conflicting leases, operating agreements, private claims or other existing or future obligations or conditions which may affect all or any portion of the nominated tract or its suitability for lease.

Maps depicting the nominated tract, containing the bearings, distances and coordinates of the nominated tract based on the Louisiana Coordinate System of 1927, North or South Zone, as applicable, are available for public inspection and review at the offices of the Louisiana State Mineral Board from 10:00 a.m. to 3:00 p.m. Monday - Friday.

In the event of conflict between the description of the nominated tract set forth above and the description of the nominated property as contained on the maps maintained at the offices of the Louisiana State Mineral Board, the Louisiana State Mineral Board maps shall prevail and shall provide the final property description of the lease to be awarded of the nominated tract.

Any mineral lease of the nominated tract by the Louisiana State Mineral Board shall be without warranty of any kind, either express, implied, or statutory, including, but not limited to, the implied warranties or merchantability and fitness for a particular purpose.

Should the mineral lease of the nominated tract awarded by the Louisiana State Mineral Board be subsequently modified, cancelled or abrogated due to the existence of conflicting leases, operating agreements, private claims or other existing or future obligations or conditions which may affect all or any portion of the leased tract, it shall not relieve the Lessee of the obligation to pay any bonus due thereon to the Louisiana State Mineral Board, nor shall the Louisiana State Mineral Board be obligated to refund any consideration paid by the Lessee prior to such modification, cancellation, or abrogation, including, but not limited to, bonuses, rents and royalties.

NOTE: The State of Louisiana does hereby reserve, and this lease shall be subject to, the imprescriptible right of surface use in the nature of a servitude in favor of the Department of Natural Resources, including its Offices and Commissions, for the sole purpose of implementing, constructing, servicing and maintaining approved coastal zone management and/or restoration projects. Utilization of any and all rights derived under this lease by the mineral lessee, its agents, successors or assigns, shall not interfere with nor hinder the reasonable surface use by the Department of Natural Resources, its Offices or Commissions, as hereinabove reserved.

Applicant: Robert A. Schroeder, Inc.

Bidder	Cash Payment	Price / Acre	Rental	Oil	Gas	Other

BLOCK 3

BLOCK 4

MAIN PASS AREA, REVISED

SL 16632

P.O.B.

X = 2,613,225
Y = 361,320EAST
7375'X = 2,605,850
Y = 361,320TR 34100
1,606.72 ± ACS.
JAN., 2002

1606.72 ACRES

BRETON SOUND

SL 16172

SL 16633

TEXAS GAS EXPL.
SL 16633

BLOCK 10

BLOCK 9

X = 2,613,225
Y = 351,830APPROXIMATE LOCATION
OF PARISH LINEST. BERNARD PARISH
PLAQUEMINES PARISH

WEST

7375'

OCEANIC
SL 16174OCEANIC
SL 16174OCEANIC
SL 16174OCEANIC
SL 16174OCEANIC
SL 16174OCEANIC
SL 16174OCEANIC
SL 16174OCEANIC
SL 16174OCEANIC
SL 16174OCEANIC
SL 16174OCEANIC
SL 16174OCEANIC
SL 16174OCEANIC
SL 16174OCEANIC
SL 16174OCEANIC
SL 16174OCEANIC
SL 16174OCEANIC
SL 16174OCEANIC
SL 16174OCEANIC
SL 16174OCEANIC
SL 16174OCEANIC
SL 16174OCEANIC
SL 16174OCEANIC
SL 16174OCEANIC
SL 16174OCEANIC
SL 16174OCEANIC
SL 16174OCEANIC
SL 16174OCEANIC
SL 16174OCEANIC
SL 16174OCEANIC
SL 16174OCEANIC
SL 16174BLOCK 15
SL 16683

BLOCK 16



LOCATED IN
BLOCK 10
MAIN PASS AREA, REVISED
ST. BERNARD AND PLAQUEMINES PARISHES, LOUISIANA
SCALE 1" = 3000'

ALL COORDINATES, BEARINGS AND DISTANCES
ARE GRID, AND ARE ON THE LOUISIANA
LAMBERT PLANE COORDINATE SYSTEM,
SOUTH ZONE, 1927 NORTH AMERICAN
DATUM.



SCALE

TRACT 34101 - PORTION OF BLOCK 36, MAIN PASS AREA, REVISED, Plaquemines Parish, Louisiana

All of the lands now or formerly constituting the beds and bottoms of all water bodies of every nature and description and all islands and other lands formed by accretion or reliction, except tax lands, belonging to the State of Louisiana and not under mineral lease on January 9, 2002, situated in Plaquemines Parish, Louisiana, and more particularly described as follows: Beginning at a point having Coordinates of X = 2,620,600.00 and Y = 292,830.00, said point also being the northwest corner of Block 36, Main Pass Area, Revised; thence East 7,375.00 feet on and along the North line of said Block 36, Main Pass Area, Revised, to a point having Coordinates of X = 2,627,975.00 and Y = 292,830.00; thence South 8,816.48 feet to a point having Coordinates of X = 2,627,975.00 and Y = 284,013.52, said point also being on a Northern boundary of State of Louisiana - State Lease No. 14964; thence West 858.53 feet on and along said Northern boundary of said State of Louisiana - State Lease No. 14964 to a point having Coordinates of X = 2,627,116.47 and Y = 284,013.52, said point also being on an Eastern boundary of State of Louisiana - State Lease No. 16766; thence on and along the Eastern, Northern and Western boundaries of said State of Louisiana - State Lease No. 16766 the following courses and distances, to-wit: North 1,441.48 feet to a point having Coordinates of X = 2,627,116.47 and Y = 285,455.00; West 5,916.47 feet to a point having Coordinates of X = 2,621,200.00 and Y = 285,455.00; and South 7,375.00 feet to a point having Coordinates of X = 2,621,200.00 and Y = 278,080.00, said point also being on the South line of said Block 36, Main Pass Area, Revised, thence West 600.00 feet on and along said South line of said Block 36, Main Pass Area, Revised, to a point having Coordinates of X = 2,620,600.00 and Y = 278,080.00, said point also being the Southwest corner of said Block 36, Main Pass Area, Revised; thence North 14,750.00 feet on and along said West line of said Block 36, Main Pass Area, Revised, to the point of beginning, containing approximately 1,378.63 acres, as shown outlined on a plat on file in the Office of Mineral Resources, Department of Natural Resources, as provided by the applicant. All bearings, distances and coordinates are based on Louisiana Coordinate System of 1927 (South Zone).

NOTE: The above description of the tract nominated for lease has been provided exclusively by the party nominating the tract for lease. The Louisiana State Mineral Board makes no representation as to the accuracy of the description of the nominated tract or its suitability for lease. The Louisiana State Mineral Board has made no inspection of the nominated tract for the existence of conflicting leases, operating agreements, private claims or other existing or future obligations or conditions which may affect all or any portion of the nominated tract or its suitability for lease.

Maps depicting the nominated tract, containing the bearings, distances and coordinates of the nominated tract based on the Louisiana Coordinate System of 1927, North or South Zone, as applicable, are available for public inspection and review at the offices of the Louisiana State Mineral Board from 10:00 a.m. to 3:00 p.m. Monday - Friday.

In the event of conflict between the description of the nominated tract set forth above and the description of the nominated property as contained on the maps maintained at the offices of the Louisiana