

# INLAND TRACTS

**TRACT 34064 - Sabine Parish, Louisiana**

All of the lands now or formerly constituting the beds and bottoms of all water bodies of every nature and description and all islands and other lands formed by accretion or reliction, except tax lands, owned by and not under mineral lease from the State of Louisiana on January 9, 2002, situated in Sabine Parish, Louisiana, within the following described boundaries: Beginning at a point having Coordinates of X = 1,586,600.00 and Y = 400,250.00; thence North 26 degrees 00 minutes 00 seconds West 18,000.00 feet; thence North 64 degrees 00 minutes 00 seconds East 5,000.00 feet; thence South 26 degrees 00 minutes 00 seconds East 18,000.00 feet; thence South 64 degrees 00 minutes 00 seconds West 5,000.00 feet to the point of beginning, containing approximately 55 acres, as shown outlined on a plat on file in the Office of Mineral Resources, Department of Natural Resources, **LESS AND EXCEPT** that portion thereof, if any, located West of the boundary line between the States of Texas and Louisiana as determined by the report of the Special Master in litigation in the Supreme Court of the United States styled Texas v. Louisiana et al No. 36 Original, or as otherwise approved by said court, as provided by the applicant. All bearings, distances and coordinates are based on Louisiana Coordinate System of 1927 (South Zone).

NOTE: The above description of the tract nominated for lease has been provided exclusively by the party nominating the tract for lease. The Louisiana State Mineral Board makes no representation as to the accuracy of the description of the nominated tract or its suitability for lease. The Louisiana State Mineral Board has made no inspection of the nominated tract for the existence of conflicting leases, operating agreements, private claims or other existing or future obligations or conditions which may affect all or any portion of the nominated tract or its suitability for lease.

Maps depicting the nominated tract, containing the bearings, distances and coordinates of the nominated tract based on the Louisiana Coordinate System of 1927, North or South Zone, as applicable, are available for public inspection and review at the offices of the Louisiana State Mineral Board from 10:00 a.m. to 3:00 p.m. Monday - Friday.

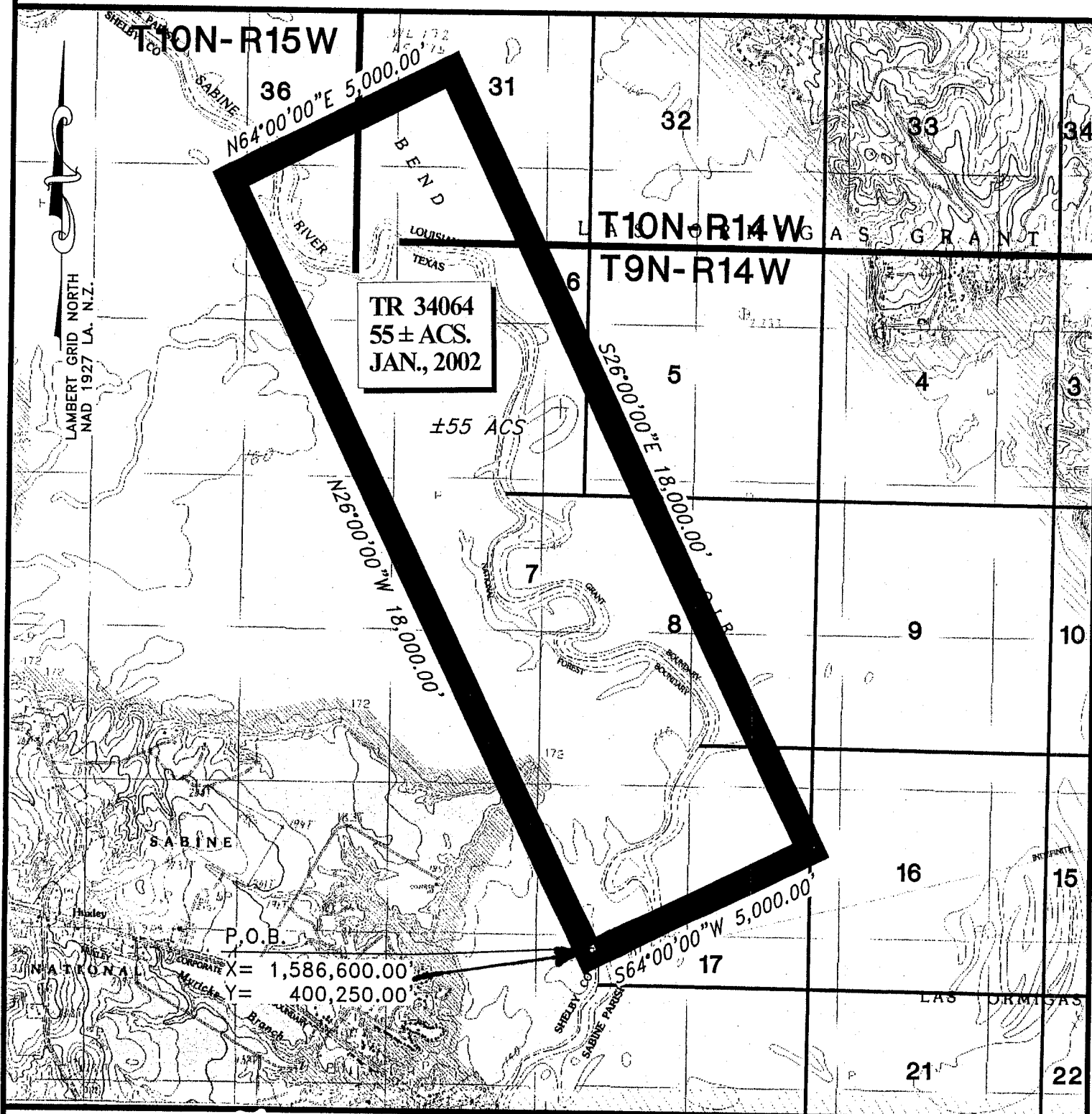
In the event of conflict between the description of the nominated tract set forth above and the description of the nominated property as contained on the maps maintained at the offices of the Louisiana State Mineral Board, the Louisiana State Mineral Board maps shall prevail and shall provide the final property description of the lease to be awarded of the nominated tract.

Any mineral lease of the nominated tract by the Louisiana State Mineral Board shall be without warranty of any kind, either express, implied, or statutory, including, but not limited to, the implied warranties or merchantability and fitness for a particular purpose. Should the mineral lease of the nominated tract awarded by the Louisiana State Mineral Board be subsequently modified, cancelled or abrogated due to the existence of conflicting leases, operating agreements, private claims or other existing of future obligations or conditions which may affect all or any portion of the leased tract, it shall not relieve the Lessee of the obligation to pay any bonus due thereon to the Louisiana State Mineral Board, nor shall the Louisiana State Mineral Board be obligated to refund any

consideration paid by the Lessee prior to such modification, cancellation, or abrogation, including, but not limited to, bonuses, rents and royalties.

Applicant: Upstream Energy, Inc.

Bidder	Cash Payment	Price / Acre	Rental	Oil	Gas	Other



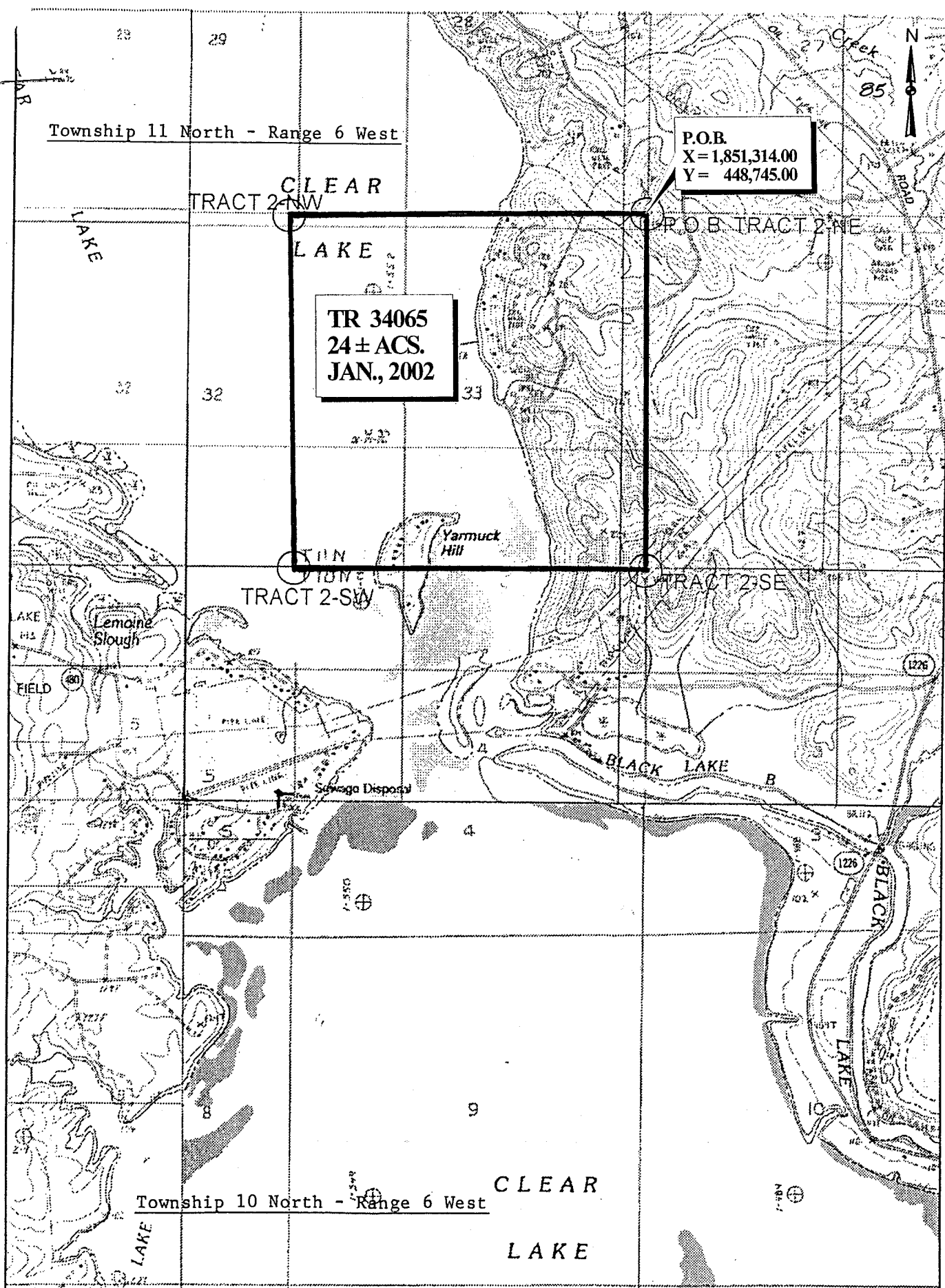
**SABINE PARISH, LOUISIANA**

**TRACT 34065 - Natchitoches Parish, Louisiana**

All of the lands now or formerly constituting the beds and bottoms of all water bodies of every nature and description and all islands and other lands formed by accretion or reliction, except tax lands, owned by and not under mineral lease from the State of Louisiana on January 9, 2002, situated in Natchitoches Parish, Louisiana, within the following described boundaries: Beginning at a point having Coordinates of X = 1,851,314.00 and Y = 448,745.00; thence South 5,355.00 feet to a point; thence West 5,188.00 feet to a point having Coordinates of X = 1,846,126.00 and Y = 443,390.00; thence North 5,355.00 feet to a point; thence East 5,188.00 feet to the point of beginning, **LESS AND EXCEPT** those portions of State Lease No. 4596 that may lie within the above described tract, containing approximately **24 acres**, as shown outlined on a plat on file in the Office of Mineral Resources, Department of Natural Resources, as provided by the applicant. All bearings, distances and coordinates are based on Louisiana Coordinate System of 1927 (North Zone).

Applicant: Or-En, L.C.

Bidder	Cash Payment	Price / Acre	Rental	Oil	Gas	Other



Location: 031° 52' 52.4" N 092° 59' 09.2" W

Scale: 1 inch equals 2000 feet

Natchitoches Parish, LA

**TRACT 34066 - Natchitoches and Winn Parishes, Louisiana**

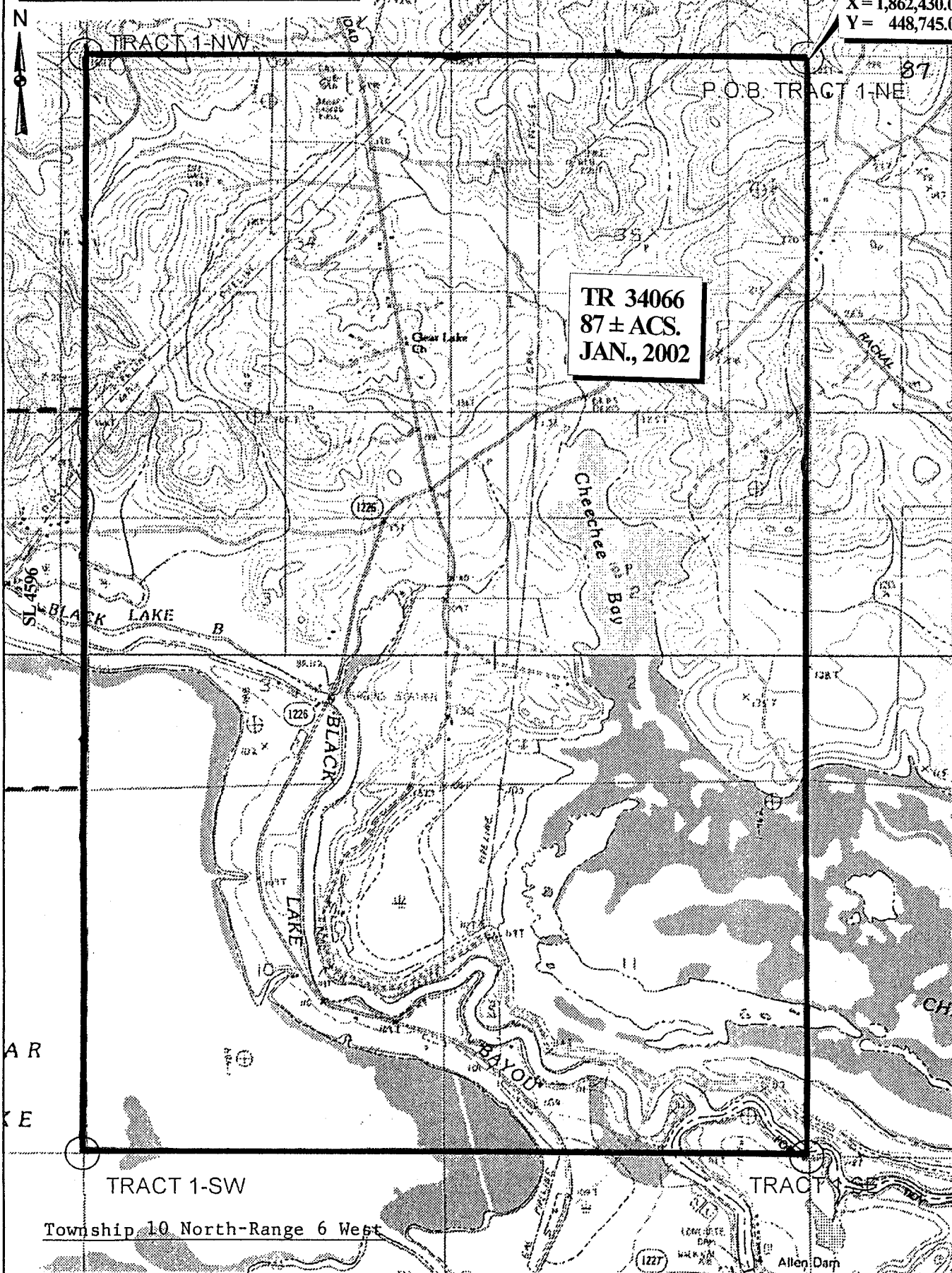
All of the lands now or formerly constituting the beds and bottoms of all water bodies of every nature and description and all islands and other lands formed by accretion or reliction, except tax lands, owned by and not under mineral lease from the State of Louisiana on January 9, 2002, situated in Natchitoches and Winn Parishes, Louisiana, within the following described boundaries: Beginning at a point having Coordinates of X = 1,862,430.00 and Y = 448,745.00; thence South 16,110.00 feet to a point; thence West 11,116.00 feet to a point having Coordinates of X = 1,851,314.00 and Y = 432,635.00; thence North 16,110.00 feet to a point; thence East 11,116.00 feet to the point of beginning, **LESS AND EXCEPT** those portions of State Lease No. 4596 that may lie within the above described tract, containing approximately **87 acres**, as shown outlined on a plat on file in the Office of Mineral Resources, Department of Natural Resources, as provided by the applicant. All bearings, distances and coordinates are based on Louisiana Coordinate System of 1927 (South Zone).

Applicant: Or-En, L.C.

Bidder	Cash Payment	Price / Acre	Rental	Oil	Gas	Other

Township 11 North-Range 6 West

P.O.B.  
X = 1,862,430.00  
Y = 448,745.00



Location: 031° 52' 36.0" N 092° 57' 32.2" W

Scale: 1 inch equals 2000 feet

NATCHITOCHEs & WINN PARISHES



**TRACT 34067 - Caldwell and Richland Parishes, Louisiana**

All of the lands now or formerly constituting the beds and bottoms of all water bodies of every nature and description and all islands and other lands formed by accretion or reliction, except tax lands, owned by and not under mineral lease from the State of Louisiana on January 9, 2002, situated in Caldwell and Richland Parishes, Louisiana, within the following described boundaries: Beginning at a point having Coordinates of X = 2,149,959.76 and Y = 559,391.92; thence Southerly approximately 5,280 feet to a point having Coordinates of X = 2,149,579.71 and Y = 554,065.75; thence Easterly to a point having Coordinates of X = 2,154,735.62 and Y = 554,077.07; thence Northerly to a point having Coordinates of X = 2,154,699.19 and Y = 559,363.99; thence Easterly to the point of beginning, containing approximately **33 acres**, as shown outlined on a plat on file in the Office of Mineral Resources, Department of Natural Resources, as provided by the applicant. All bearings, distances and coordinates are based on Louisiana Coordinate System of 1927 (South Zone).

NOTE: The above description of the tract nominated for lease has been provided exclusively by the party nominating the tract for lease. The Louisiana State Mineral Board makes no representation as to the accuracy of the description of the nominated tract or its suitability for lease. The Louisiana State Mineral Board has made no inspection of the nominated tract for the existence of conflicting leases, operating agreements, private claims or other existing or future obligations or conditions which may affect all or any portion of the nominated tract or its suitability for lease.

Maps depicting the nominated tract, containing the bearings, distances and coordinates of the nominated tract based on the Louisiana Coordinate System of 1927, North or South Zone, as applicable, are available for public inspection and review at the offices of the Louisiana State Mineral Board from 10:00 a.m. to 3:00 p.m. Monday - Friday.

In the event of conflict between the description of the nominated tract set forth above and the description of the nominated property as contained on the maps maintained at the offices of the Louisiana State Mineral Board, the Louisiana State Mineral Board maps shall prevail and shall provide the final property description of the lease to be awarded of the nominated tract.

Any mineral lease of the nominated tract by the Louisiana State Mineral Board shall be without warranty of any kind, either express, implied, or statutory, including, but not limited to, the implied warranties or merchantability and fitness for a particular purpose. Should the mineral lease of the nominated tract awarded by the Louisiana State Mineral Board be subsequently modified, cancelled or abrogated due to the existence of conflicting leases, operating agreements, private claims or other existing of future obligations or conditions which may affect all or any portion of the leased tract, it shall not relieve the Lessee of the obligation to pay any bonus due thereon to the Louisiana State Mineral Board, nor shall the Louisiana State Mineral Board be obligated to refund any consideration paid by the Lessee prior to such modification, cancellation, or abrogation, including, but not limited to, bonuses, rents and royalties.

Applicant: Kevin J. Severson

Bidder	Cash Payment	Price / Acre	Rental	Oil	Gas	Other

