

**TRACT 45230 - Terrebonne Parish, Louisiana**

All of the lands now or formerly constituting the beds and bottoms of all water bodies of every nature and description as to which title is vested in the State of Louisiana, together with all islands arising therein and other lands formed by accretion or by reliction, where allowed by law, excepting tax adjudicated lands, and not presently under mineral lease on December 11, 2019, situated in Terrebonne Parish, Louisiana, and more particularly described as follows: Beginning at a point having Coordinates of X = 2,284,919.15 and Y = 211,619.51; thence East 8,000.00 feet to a point having Coordinates of X = 2,292,919.15 and Y = 211,619.51; thence South 2,999.99 feet to a point having Coordinates of X = 2,292,919.15 and Y = 208,619.52; thence East 1,358.11 feet to a point having Coordinates of X = 2,294,277.26 and Y = 208,619.52; thence South 4,657.95 feet to the Northwest corner of State Lease No. 20892, as amended, also being the Northeast corner of State Lease No. 20893, as amended, having Coordinates of X = 2,294,277.26 and Y = 203,961.57; thence along the boundary of said State Lease No. 20893, the following courses: West 166.88 feet to a point having Coordinates of X = 2,294,110.38 and Y = 203,961.57 and South 47 degrees 51 minutes 38 seconds West 1,732.24 feet to a point having Coordinates of X = 2,292,825.90 and Y = 202,799.35; thence West 7,906.75 feet to a point having Coordinates of X = 2,284,919.15 and Y = 202,799.35; thence North 8,820.16 feet to the point of beginning, containing approximately **1,779.74 acres**, all as more particularly outlined on a plat on file in the Office of Mineral Resources, Department of Natural Resources. All bearings, distances and coordinates are based on Louisiana Coordinate System of 1927, (North or South Zone), where applicable.

NOTE: The above description of the Tract nominated for lease has been provided and corrected, where required, exclusively by the nomination party. Any mineral lease selected from this Tract and awarded by the Louisiana State Mineral and Energy Board shall be without warranty of any kind, either express, implied, or statutory, including, but not limited to, the implied warranties of merchantability and fitness for a particular purpose. Should the mineral lease awarded by the Louisiana State Mineral and Energy Board be subsequently modified, cancelled or abrogated due to the existence of conflicting leases, operating agreements, private claims or other future obligations or conditions which may affect all or any portion of the leased Tract, it shall not relieve the Lessee of the obligation to pay any bonus due thereon to the Louisiana State Mineral and Energy Board, nor shall the Louisiana State Mineral and Energy Board be obligated to refund any consideration paid by the Lessor prior to such modification, cancellation, or abrogation, including, but not limited to, bonuses, rentals and royalties.

NOTE: The State of Louisiana does hereby reserve, and this lease shall be subject to, the imprescriptible right of surface use in the nature of a servitude in favor of the Department of Natural Resources, including its Offices and Commissions, for the sole purpose of implementing, constructing, servicing and maintaining approved coastal zone management and/or restoration projects. Utilization of any and all rights derived under this

lease by the mineral lessee, its agents, successors or assigns, shall not interfere with nor hinder the reasonable surface use by the Department of Natural Resources, its Offices or Commissions, as herein above reserved.

Applicant: THEOPHILUS OIL, GAS & LAND SERVICES, LLC

Bidder	Cash Payment	Price/ Acre	Rental	Oil	Gas	Other



0 2,000 Feet

P.O.B.

TERREBONNE

LAFOURCHE

LAKE BARRE

SL 20892

SL 20893

Legend

- 19120008
- Active\_Leases
- Counties

**TRACT 45231 - Lafourche and Terrebonne Parishes, Louisiana**

All of the lands now or formerly constituting the beds and bottoms of all water bodies of every nature and description as to which title is vested in the State of Louisiana, together with all islands arising therein and other lands formed by accretion or by reliction, where allowed by law, excepting tax adjudicated lands, and not presently under mineral lease on December 11, 2019, situated in Lafourche and Terrebonne Parishes, Louisiana, and more particularly described as follows: Beginning at a point having Coordinates of X = 2,294,277.26 and Y = 208,619.52; thence East 4,641.89 feet to the Southwest corner of State Lease No. 21782, having Coordinates of X = 2,298,919.15 and Y = 208,619.52; thence along the boundary of said State Lease No. 21782 the following courses: North 89 degrees 27 minutes 24 seconds East 1,769.41 feet to a point having Coordinates of X = 2,300,688.48 and Y = 208,636.30 and South 89 degrees 26 minutes 40 seconds East 1,730.75 feet to its Southeast corner, having Coordinates of X = 2,302,419.15 and Y = 208,619.52; thence South 5,000.01 feet to a point having Coordinates of X = 2,302,419.15 and Y = 203,619.51; thence West 4,661.34 feet to a point on the boundary of State Lease No. 20892, as amended, having Coordinates of X = 2,297,757.81 and Y = 203,619.51; thence along the boundary of said State Lease No. 20892 the following courses: North 40 degrees 14 minutes 41 seconds West 448.14 feet to a point having Coordinates of X = 2,297,468.29 and Y = 203,961.57 and West 3,191.03 feet to its Northwest corner, also being the Northeast corner of State Lease No. 20893, as amended, having Coordinates of X = 2,294,277.26 and Y = 203,961.57; thence North 4,657.95 feet to the point of beginning, containing approximately **897 acres**, all as more particularly outlined on a plat on file in the Office of Mineral Resources, Department of Natural Resources. All bearings, distances and coordinates are based on Louisiana Coordinate System of 1927, (North or South Zone), where applicable.

NOTE: The above description of the Tract nominated for lease has been provided and corrected, where required, exclusively by the nomination party. Any mineral lease selected from this Tract and awarded by the Louisiana State Mineral and Energy Board shall be without warranty of any kind, either express, implied, or statutory, including, but not limited to, the implied warranties of merchantability and fitness for a particular purpose. Should the mineral lease awarded by the Louisiana State Mineral and Energy Board be subsequently modified, cancelled or abrogated due to the existence of conflicting leases, operating agreements, private claims or other future obligations or conditions which may affect all or any portion of the leased Tract, it shall not relieve the Lessee of the obligation to pay any bonus due thereon to the Louisiana State Mineral and Energy Board, nor shall the Louisiana State Mineral and Energy Board be obligated to refund any consideration paid by the Lessor prior to such modification, cancellation, or abrogation, including, but not limited to, bonuses, rentals and royalties.

NOTE: The State of Louisiana does hereby reserve, and this lease shall be subject to, the imprescriptible right of surface use in the nature of a servitude in favor of the Department of Natural Resources, including its Offices and Commissions, for the sole purpose of implementing, constructing,

servicing and maintaining approved coastal zone management and/or restoration projects. Utilization of any and all rights derived under this lease by the mineral lessee, its agents, successors or assigns, shall not interfere with nor hinder the reasonable surface use by the Department of Natural Resources, its Offices or Commissions, as herein above reserved.

Applicant: THEOPHILUS OIL, GAS & LAND SERVICES, LLC

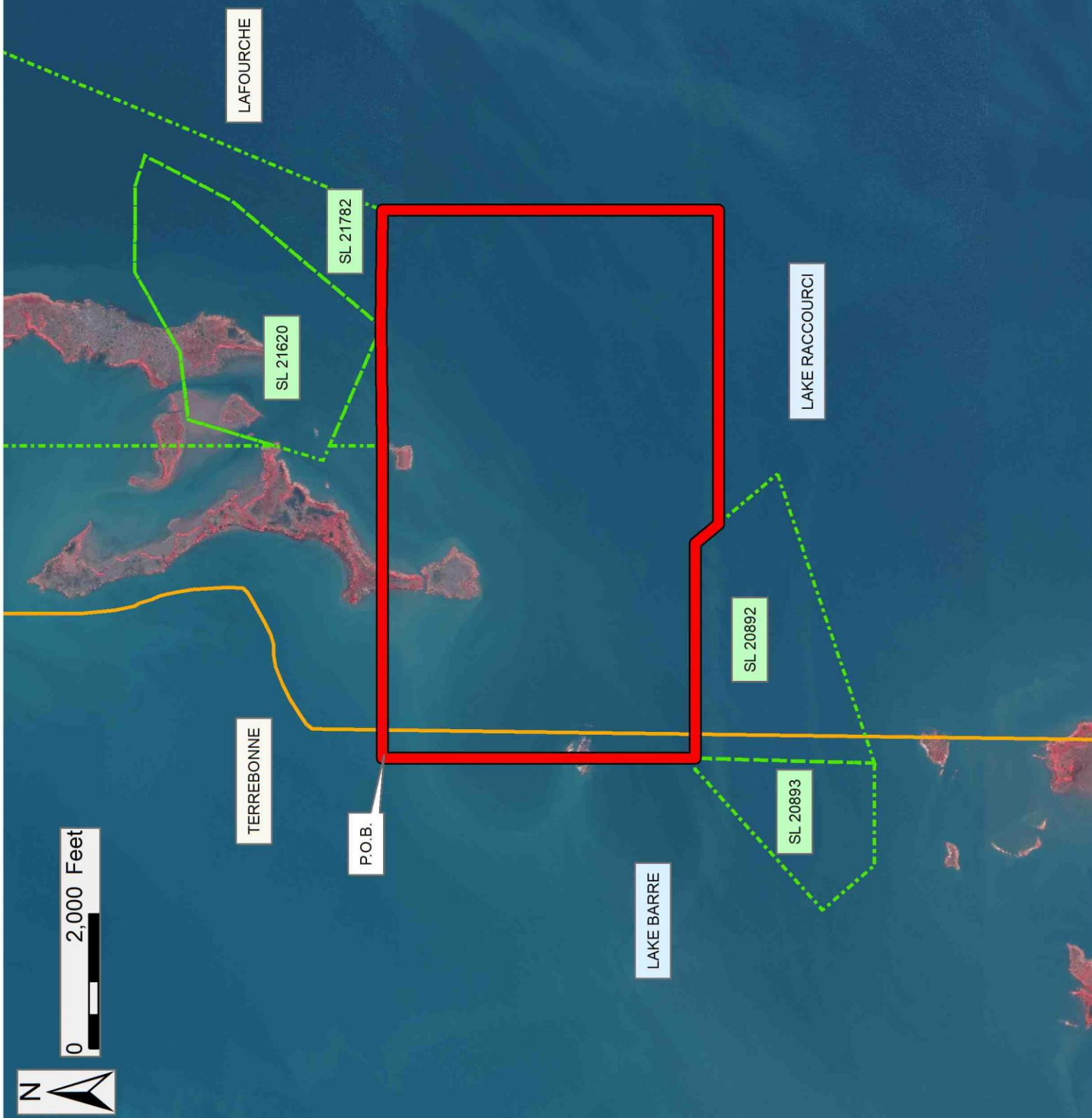
Bidder	Cash Payment	Price/ Acre	Rental	Oil	Gas	Other

**Legend**

19120009

Active\_Leases

Counties



**TRACT 45232 - Lafourche Parish, Louisiana**

All of the lands now or formerly constituting the beds and bottoms of all water bodies of every nature and description as to which title is vested in the State of Louisiana, together with all islands arising therein and other lands formed by accretion or by reliction, where allowed by law, excepting tax adjudicated lands, and not presently under mineral lease on December 11, 2019, situated in Lafourche Parish, Louisiana, and more particularly described as follows: Beginning at the Southwest corner of State Lease No. 21782 having Coordinates of X = 2,302,419.15 and Y = 208,619.52; thence East 8,500.00 feet to a point having Coordinates of X = 2,310,919.15 and Y = 208,619.52; thence South 5,000.01 feet to a point having Coordinates of X = 2,310,919.15 and Y = 203,619.51; thence West 8,500.00 feet to a point having Coordinates of X = 2,302,419.15 and Y = 203,619.51; thence North 5,000.01 feet to the point of beginning, containing approximately **975.67 acres**, all as more particularly outlined on a plat on file in the Office of Mineral Resources, Department of Natural Resources. All bearings, distances and coordinates are based on Louisiana Coordinate System of 1927, (North or South Zone), where applicable.

NOTE: The above description of the Tract nominated for lease has been provided and corrected, where required, exclusively by the nomination party. Any mineral lease selected from this Tract and awarded by the Louisiana State Mineral and Energy Board shall be without warranty of any kind, either express, implied, or statutory, including, but not limited to, the implied warranties of merchantability and fitness for a particular purpose. Should the mineral lease awarded by the Louisiana State Mineral and Energy Board be subsequently modified, cancelled or abrogated due to the existence of conflicting leases, operating agreements, private claims or other future obligations or conditions which may affect all or any portion of the leased Tract, it shall not relieve the Lessee of the obligation to pay any bonus due thereon to the Louisiana State Mineral and Energy Board, nor shall the Louisiana State Mineral and Energy Board be obligated to refund any consideration paid by the Lessor prior to such modification, cancellation, or abrogation, including, but not limited to, bonuses, rentals and royalties.

NOTE: The State of Louisiana does hereby reserve, and this lease shall be subject to, the imprescriptible right of surface use in the nature of a servitude in favor of the Department of Natural Resources, including its Offices and Commissions, for the sole purpose of implementing, constructing, servicing and maintaining approved coastal zone management and/or restoration projects. Utilization of any and all rights derived under this lease by the mineral lessee, its agents, successors or assigns, shall not interfere with nor hinder the reasonable surface use by the Department of Natural Resources, its Offices or Commissions, as herein above reserved.

Applicant: THEOPHILUS OIL, GAS & LAND SERVICES, LLC

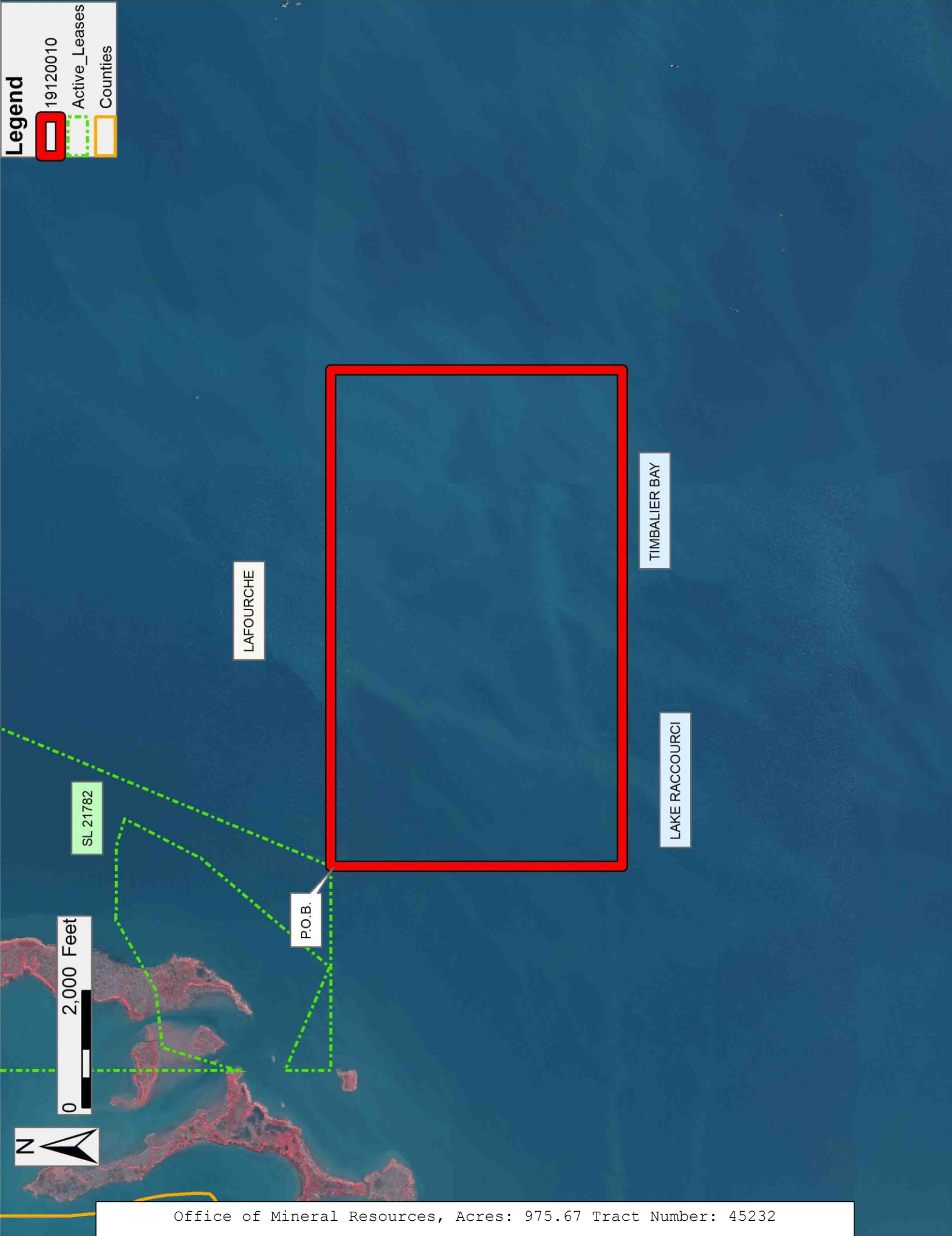
Bidder	Cash Payment	Price/ Acre	Rental	Oil	Gas	Other

**Legend**

19120010

Active\_Leases

Counties



**TRACT 45233 - Terrebonne Parish, Louisiana**

All of the lands now or formerly constituting the beds and bottoms of all water bodies of every nature and description as to which title is vested in the State of Louisiana, together with all islands arising therein and other lands formed by accretion or by reliction, where allowed by law, excepting tax adjudicated lands, and not presently under mineral lease on December 11, 2019, situated in Terrebonne Parish, Louisiana, and more particularly described as follows: Beginning at a point having Coordinates of X = 2,284,704.62 and Y = 202,799.35; thence East 8,121.28 feet to a point on the boundary of State Lease No. 20893, as amended, having Coordinates of X = 2,292,825.90 and Y = 202,799.35; thence along the boundary of said State Lease No. 20893 the following courses: South 47 degrees 51 minutes 38 seconds West 1,088.37 feet to a point having Coordinates of X = 2,292,018.86 and Y = 202,069.12, and South 40 degrees 49 minutes 57 seconds East 1,022.27 feet to a point on the boundary of State Lease No. 20894, as amended, having Coordinates of X = 2,292,687.27 and Y = 201,295.65; thence along the boundary of said State Lease No. 20894 the following courses: South 40 degrees 49 minutes 55 seconds East 517.59 feet to a point having Coordinates of X = 2,293,025.69 and Y = 200,904.03, and North 71 degrees 27 minutes 47 seconds East 1,243.44 feet to the Southwest corner of State Lease No. 20892, as amended, having Coordinates of X = 2,294,204.62 and Y = 201,299.35; thence South 5,000.01 feet to a point having Coordinates of X = 2,294,204.62 and Y = 196,299.34; thence West 9,500.00 feet to a point having Coordinates of X = 2,284,704.62 and Y = 196,299.34; thence North 6,500.01 feet to the point of beginning, **LESS AND EXCEPT** any Vacant State Lands, being lands which are not currently beds or bottoms of water bodies, and which have not been severed from the ownership of the State of Louisiana; such excepted Vacant State Lands being portions of Lots 1, 2, 3, 4 and 5, Section 35, and Lots 1 and 2, Section 34, Township 21 South, Range 20 East, Louisiana Meridian, situated in Lafourche Parish, Louisiana, as depicted on Sheet 2 (of 2 sheets) of the survey prepared by Norville E. Shearer, approved by the United States Department of the Interior Bureau of Land Management on June 18, 1959, covering lands transferred to the State of Louisiana pursuant to the Swamp Lands Acts of March 2, 1849 and September 30, 1850, containing approximately **1,252 acres**, all as more particularly outlined on a plat on file in the Office of Mineral Resources, Department of Natural Resources. All bearings, distances and coordinates are based on Louisiana Coordinate System of 1927, (North or South Zone), where applicable.

NOTE: The above description of the Tract nominated for lease has been provided and corrected, where required, exclusively by the nomination party. Any mineral lease selected from this Tract and awarded by the Louisiana State Mineral and Energy Board shall be without warranty of any kind, either express, implied, or statutory, including, but not limited to, the implied warranties of merchantability and fitness for a particular purpose. Should the mineral lease awarded by the Louisiana State Mineral and Energy Board be subsequently modified, cancelled or abrogated due to the existence of conflicting leases, operating agreements, private claims or other future obligations or conditions which may affect all or any portion of the leased

Tract, it shall not relieve the Lessee of the obligation to pay any bonus due thereon to the Louisiana State Mineral and Energy Board, nor shall the Louisiana State Mineral and Energy Board be obligated to refund any consideration paid by the Lessor prior to such modification, cancellation, or abrogation, including, but not limited to, bonuses, rentals and royalties.

NOTE: The State of Louisiana does hereby reserve, and this lease shall be subject to, the imprescriptible right of surface use in the nature of a servitude in favor of the Department of Natural Resources, including its Offices and Commissions, for the sole purpose of implementing, constructing, servicing and maintaining approved coastal zone management and/or restoration projects. Utilization of any and all rights derived under this lease by the mineral lessee, its agents, successors or assigns, shall not interfere with nor hinder the reasonable surface use by the Department of Natural Resources, its Offices or Commissions, as herein above reserved.

Applicant: THEOPHILUS OIL, GAS & LAND SERVICES, LLC

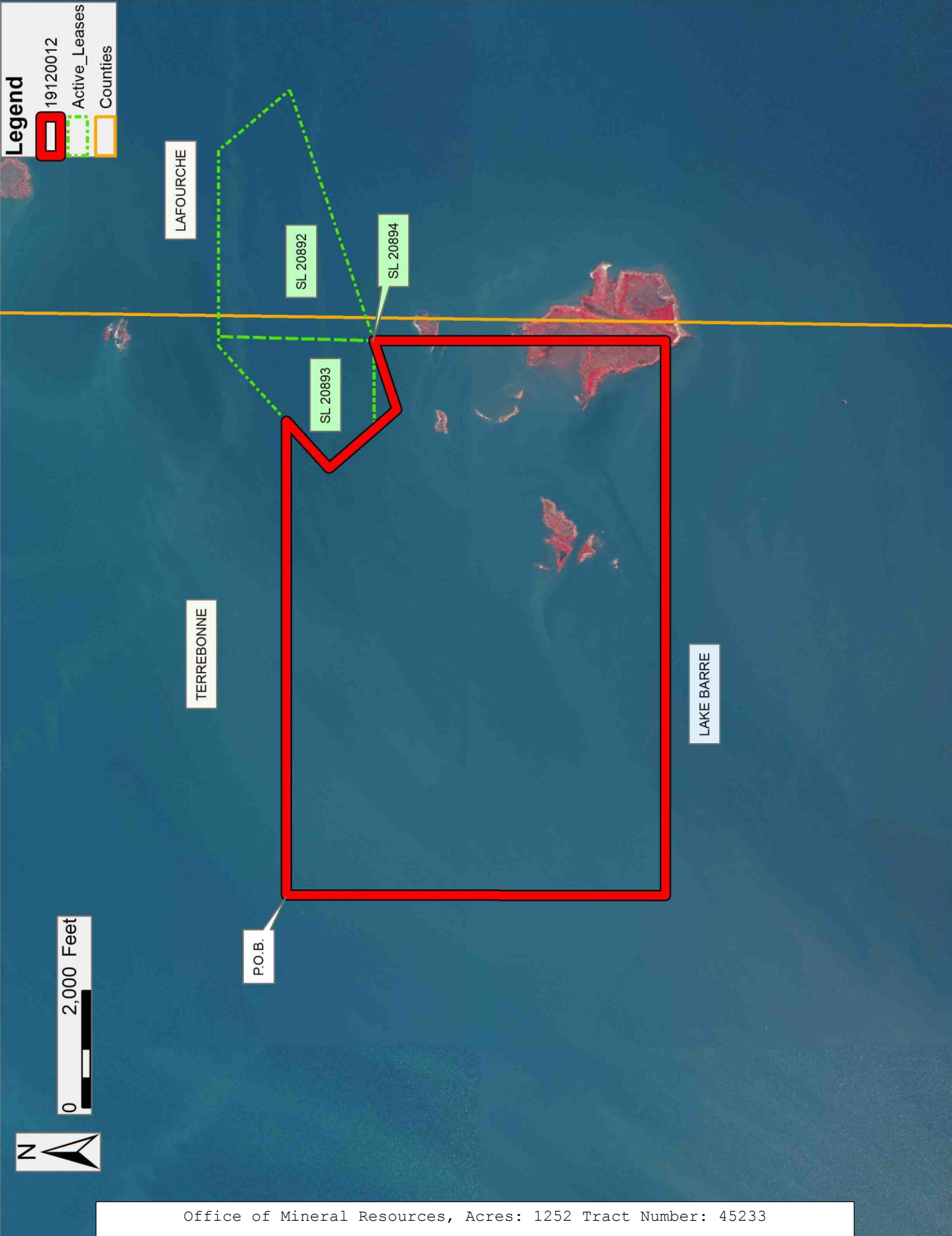
Bidder	Cash Payment	Price/ Acre	Rental	Oil	Gas	Other

**Legend**

19120012

Active\_Leases

Counties



**TRACT 45234 - Lafourche and Terrebonne Parishes, Louisiana**

All of the lands now or formerly constituting the beds and bottoms of all water bodies of every nature and description as to which title is vested in the State of Louisiana, together with all islands arising therein and other lands formed by accretion or by reliction, where allowed by law, excepting tax adjudicated lands, and not presently under mineral lease on December 11, 2019, situated in Lafourche and Terrebonne Parishes, Louisiana, and more particularly described as follows: Beginning at a point on the boundary of State Lease No. 20892, as amended, having Coordinates of X = 2,297,757.81 and Y = 203,619.51; thence East 4,661.34 feet to a point having Coordinates of X = 2,302,419.15 and Y = 203,619.51; thence South 7,285.70 feet to a point on the boundary of State Lease No. 3599, as amended, having Coordinates of X = 2,302,419.15 and Y = 196,333.81; then South 89 degrees 30 minutes 18 seconds West 3,989.68 feet along said boundary of said State Lease No. 3599, to its most Westerly Northwest corner, having Coordinates of X = 2,298,429.62 and Y = 196,299.34; thence West 4,225.00 feet to a point having Coordinates of X = 2,294,204.62 and Y = 196,299.34; thence North 00 degrees 00 minutes 01 seconds East 5,000.01 feet to the Southwest corner of said State Lease No. 20892, also being the Southeast corner of State Lease No. 20893, as amended, also being the Northeast corner of State Lease No. 20894, as amended, having Coordinates of X = 2,294,204.64 and Y = 201,299.35; thence along the boundary of said State Lease No. 20892 the following courses: North 71 degrees 27 minutes 47 seconds East 4,532.48 feet to a point having Coordinates of X = 2,298,501.97 and Y = 202,740.30, and North 40 degrees 14 minutes 40 seconds West 1,151.86 feet to the point of beginning, **LESS AND EXCEPT** any Vacant State Lands, being lands which are not currently beds or bottoms of water bodies, and which have not been severed from the ownership of the State of Louisiana; such excepted Vacant State Lands being portions of Lots 1, 2, 3, 4 and 5, Section 35, and Lots 1 and 2, Section 34, Township 21 South, Range 20 East, Louisiana Meridian, situated in Lafourche Parish, Louisiana, as depicted on Sheet 2 (of 2 sheets) of the survey prepared by Norville E. Shearer, approved by the United States Department of the Interior Bureau of Land Management on June 18, 1959, covering lands transferred to the State of Louisiana pursuant to the Swamp Lands Acts of March 2, 1849 and September 30, 1850, containing approximately **1,163 acres**, all as more particularly outlined on a plat on file in the Office of Mineral Resources, Department of Natural Resources. All bearings, distances and coordinates are based on Louisiana Coordinate System of 1927, (North or South Zone), where applicable.

NOTE: The above description of the Tract nominated for lease has been provided and corrected, where required, exclusively by the nomination party. Any mineral lease selected from this Tract and awarded by the Louisiana State Mineral and Energy Board shall be without warranty of any kind, either express, implied, or statutory, including, but not limited to, the implied warranties of merchantability and fitness for a particular purpose. Should the mineral lease awarded by the Louisiana State Mineral and Energy Board be subsequently modified, cancelled or abrogated due to the existence of conflicting leases, operating agreements, private claims or other future


obligations or conditions which may affect all or any portion of the leased Tract, it shall not relieve the Lessee of the obligation to pay any bonus due thereon to the Louisiana State Mineral and Energy Board, nor shall the Louisiana State Mineral and Energy Board be obligated to refund any consideration paid by the Lessor prior to such modification, cancellation, or abrogation, including, but not limited to, bonuses, rentals and royalties.


NOTE: The State of Louisiana does hereby reserve, and this lease shall be subject to, the imprescriptible right of surface use in the nature of a servitude in favor of the Department of Natural Resources, including its Offices and Commissions, for the sole purpose of implementing, constructing, servicing and maintaining approved coastal zone management and/or restoration projects. Utilization of any and all rights derived under this lease by the mineral lessee, its agents, successors or assigns, shall not interfere with nor hinder the reasonable surface use by the Department of Natural Resources, its Offices or Commissions, as herein above reserved.

Applicant: THEOPHILUS OIL, GAS & LAND SERVICES, LLC

Bidder	Cash Payment	Price/ Acre	Rental	Oil	Gas	Other

**Legend**

 19120013

 Active\_Leases

 Counties



**TRACT 45235 - Lafourche Parish, Louisiana**

All of the lands now or formerly constituting the beds and bottoms of all water bodies of every nature and description as to which title is vested in the State of Louisiana, together with all islands arising therein and other lands formed by accretion or by reliction, where allowed by law, excepting tax adjudicated lands, and not presently under mineral lease on December 11, 2019, situated in Lafourche Parish, Louisiana, and more particularly described as follows: Beginning at a point having Coordinates of X = 2,302,419.15 and Y = 203,619.51; thence East 8,500.00 feet to a point having Coordinates of X = 2,310,919.15 and Y = 203,619.51; thence South 1,263.08 feet to a point on the boundary of Operating Agreement No. A0320 having Coordinates of X = 2,310,919.15 and Y = 202,356.43; thence along said boundary of said Operating Agreement No. A0320 the following courses and distances: North 73 degrees 39 minutes 40 seconds West 1,214.19 feet to a point having Coordinates of X = 2,309,754.00 and Y = 202,698.00, thence South 05 degrees 21 minutes 53 seconds East 1,481.36 feet to a point having Coordinates of X = 2,309,892.50 and Y = 201,223.13, and South 70 degrees 13 minutes 14 seconds East 1,091.02 feet to a point having Coordinates of X = 2,310,919.15 and Y = 200,853.93; thence South 4,851.85 feet to a point having Coordinates of X = 2,310,919.15 and Y = 196,002.08; thence South 89 degrees 31 minutes 36 seconds West 384.95 feet to the Northeast corner of State Lease No. 14703, as amended, also being a point on the boundary of State Lease No. 1480, as amended, having Coordinates of X = 2,310,534.22 and Y = 195,998.90; thence along said boundary of said State Lease No. 1480 the following courses and distances: North 43 degrees 10 minutes 40 seconds East 325.80 feet to a point having Coordinates of X = 2,310,757.15 and Y = 196,236.48, North 31 degrees 20 minutes 43 seconds West 2,037.70 feet to a point having Coordinates of X = 2,309,697.15 and Y = 197,976.77, South 84 degrees 46 minutes 18 seconds West 2,024.53 feet to a point having Coordinates of X = 2,307,681.04 and Y = 197,792.28, South 81 degrees 46 minutes 25 seconds West 1,105.08 feet to a point having Coordinates of X = 2,306,587.33 and Y = 197,634.16, South 77 degrees 05 minutes 33 seconds West 648.90 feet to a point having Coordinates of X = 2,305,954.83 and Y = 197,489.21, South 68 degrees 11 minutes 55 seconds West 851.53 feet to a point having Coordinates of X = 2,305,164.20 and Y = 197,172.96, South 64 degrees 51 minutes 17 seconds West 713.27 feet to a point having Coordinates of X = 2,304,518.52 and Y = 196,869.88, South 63 degrees 06 minutes 14 seconds West 901.62 feet to a point having Coordinates of X = 2,303,714.43 and Y = 196,462.01, and South 00 degrees 29 minutes 42 seconds East 522.01 feet to a point on the boundary of State Lease No. 3599, as amended, having Coordinates of X = 2,303,718.94 and Y = 195,940.02; thence along said boundary of said State Lease No. 3599 the following courses and distances: South 89 degrees 30 minutes 18 seconds West 870.01 feet to a point having Coordinates of X = 2,302,848.97 and Y = 195,932.51, North 00 degrees 29 minutes 42 seconds West 405.00 feet to a point having Coordinates of X = 2,302,845.47 and Y = 196,337.49 and South 89 degrees 30 minutes 20 seconds West 426.33 feet to a point having Coordinates of X = 2,302,419.15 and Y = 196,333.81; thence North 7,285.70 feet to the point of beginning, containing approximately **1,217.10 acres**, all as more particularly outlined on a plat on file in the Office of

Mineral Resources, Department of Natural Resources. All bearings, distances and coordinates are based on Louisiana Coordinate System of 1927, (North or South Zone), where applicable.

NOTE: The above description of the Tract nominated for lease has been provided and corrected, where required, exclusively by the nomination party. Any mineral lease selected from this Tract and awarded by the Louisiana State Mineral and Energy Board shall be without warranty of any kind, either express, implied, or statutory, including, but not limited to, the implied warranties of merchantability and fitness for a particular purpose. Should the mineral lease awarded by the Louisiana State Mineral and Energy Board be subsequently modified, cancelled or abrogated due to the existence of conflicting leases, operating agreements, private claims or other future obligations or conditions which may affect all or any portion of the leased Tract, it shall not relieve the Lessee of the obligation to pay any bonus due thereon to the Louisiana State Mineral and Energy Board, nor shall the Louisiana State Mineral and Energy Board be obligated to refund any consideration paid by the Lessor prior to such modification, cancellation, or abrogation, including, but not limited to, bonuses, rentals and royalties.

NOTE: The State of Louisiana does hereby reserve, and this lease shall be subject to, the imprescriptible right of surface use in the nature of a servitude in favor of the Department of Natural Resources, including its Offices and Commissions, for the sole purpose of implementing, constructing, servicing and maintaining approved coastal zone management and/or restoration projects. Utilization of any and all rights derived under this lease by the mineral lessee, its agents, successors or assigns, shall not interfere with nor hinder the reasonable surface use by the Department of Natural Resources, its Offices or Commissions, as herein above reserved.

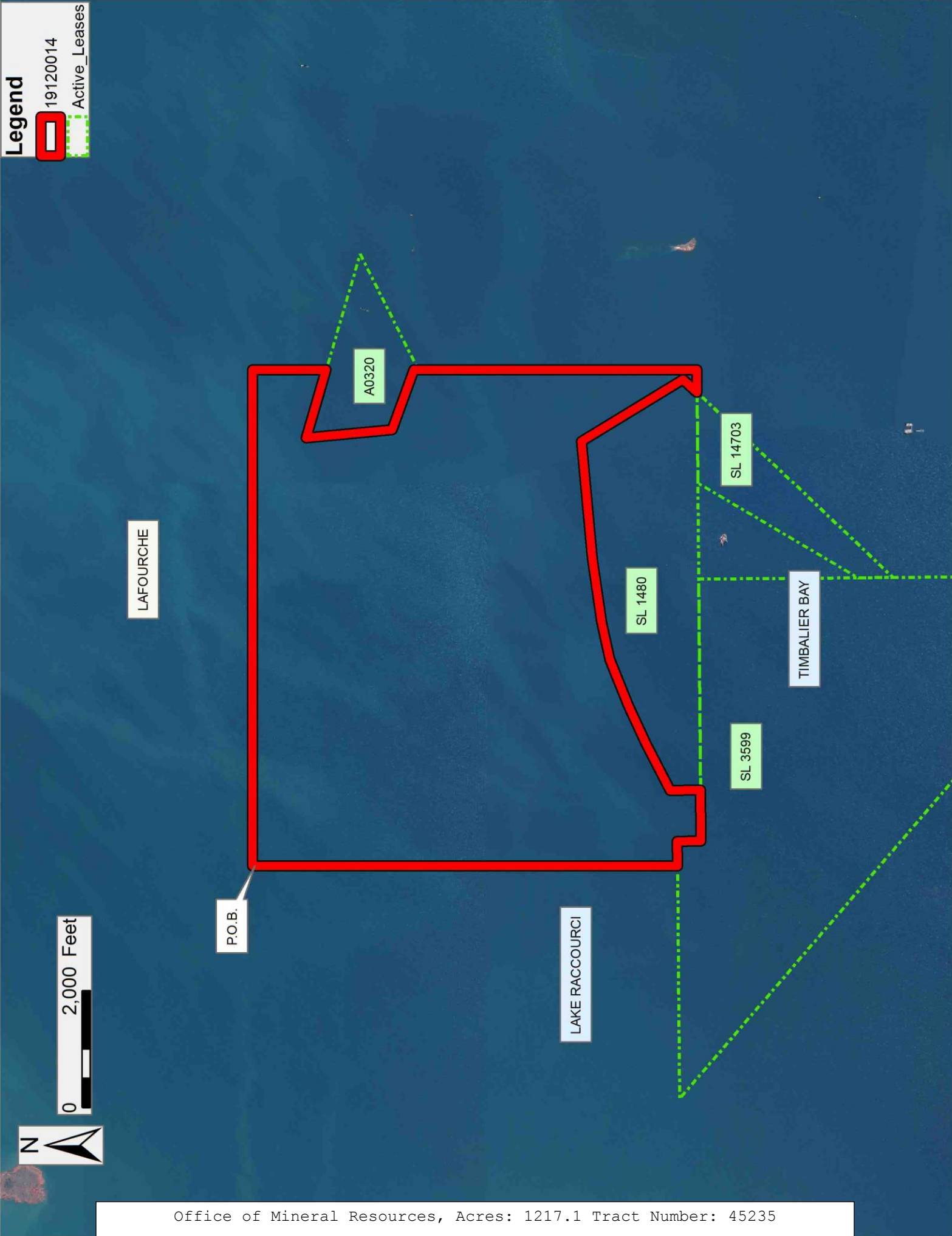
Applicant: THEOPHILUS OIL, GAS & LAND SERVICES, LLC

Bidder	Cash Payment	Price/ Acre	Rental	Oil	Gas	Other

**Legend**

19120014

Active\_Leases



**TRACT 45236 - Lafourche Parish, Louisiana**

All of the lands now or formerly constituting the beds and bottoms of all water bodies of every nature and description as to which title is vested in the State of Louisiana, together with all islands arising therein and other lands formed by accretion or by reliction, where allowed by law, excepting tax adjudicated lands, and not presently under mineral lease on December 11, 2019, situated in Lafourche Parish, Louisiana, and more particularly described as follows: Beginning at a point having Coordinates of X = 2,310,919.15 and Y = 203,619.51; thence East 6,023.96 feet to a point on the boundary of State Lease No. 1480, as amended, having Coordinates of X = 2,316,913.11 and Y = 203,619.51; thence along the boundary of said State Lease No. 1480 the following courses and distances: South 43 degrees 13 minutes 43 seconds West 603.35 feet to a point having Coordinates of X = 2,316,529.87 and Y = 203,179.89, South 48 degrees 21 minutes 59 seconds West 722.50 feet to a point having Coordinates of X = 2,315,989.87 and Y = 202,699.89, South 52 degrees 47 minutes 01 seconds West 992.00 feet to a point having Coordinates of X = 2,315,199.88 and Y = 202,099.90, South 57 degrees 07 minutes 26 seconds West 976.39 feet to a point having Coordinates of X = 2,314,379.86 and Y = 201,569.89, South 58 degrees 02 minutes 09 seconds West 516.60 feet to a point having Coordinates of X = 2,313,941.59 and Y = 201,296.41, South 60 degrees 12 minutes 18 seconds West 289.11 feet to a point having Coordinates of X = 2,313,690.70 and Y = 201,152.75, South 61 degrees 00 minutes 04 seconds West 152.33 feet to a point having Coordinates of X = 2,313,557.47 and Y = 201,078.90, South 03 degrees 41 minutes 20 seconds East 454.47 feet to a point having Coordinates of X = 2,313,586.71 and Y = 200,625.37, South 00 degrees 29 minutes 42 seconds East 2,283.26 feet to a point having Coordinates of X = 2,313,606.44 and Y = 198,342.20, North 63 degrees 17 minutes 36 seconds East 2,167.68 feet to a point having Coordinates of X = 2,315,542.87 and Y = 199,316.41, South 1,172.45 feet to a point having Coordinates of X = 2,315,542.87 and Y = 198,143.96, and East 2,193.22 feet to a point on the West boundary of State Lease No. 14589, as amended, having Coordinates of X = 2,317,736.09 and Y = 198,143.96; thence South 2,082.84 feet along said West boundary of said State Lease No. 14589 to its Southwest corner, having Coordinates of X = 2,317,736.10 and Y = 196,061.12; thence South 89 degrees 29 minutes 05 seconds West 2,812.45 feet to a point on the boundary of State Lease No. 3258, as amended, having Coordinates of X = 2,314,923.76 and Y = 196,035.83; thence South 89 degrees 30 minutes 18 seconds West 1,692.52 feet along said State Lease No. 3258 to a point having Coordinates of X = 2,313,231.30 and Y = 196,021.21; thence South 89 degrees 31 minutes 34 seconds West 2,312.23 feet to a point having Coordinates of X = 2,310,919.15 and Y = 196,002.08; thence North 4,851.85 feet to a point on the boundary of Operating Agreement A0320 having Coordinates of X = 2,310,919.15 and Y = 200,853.93; thence along the boundary of said Operating Agreement A0320 the following courses and distances: South 70 degrees 13 minutes 06 seconds East 94.58 feet to a point having Coordinates of X = 2,311,008.15 and Y = 200,821.92, North 63 degrees 21 minutes 41 seconds East 2,123.35 feet to a point having Coordinates of X = 2,312,906.11 and Y = 201,773.95, and North 73 degrees 39 minutes 41 seconds West 2,070.58 feet to a point having Coordinates of X = 2,310,919.15 and Y

= 202,356.43; thence North 1,263.08 feet to the point of beginning, containing approximately **768.93 acres**, all as more particularly outlined on a plat on file in the Office of Mineral Resources, Department of Natural Resources. All bearings, distances and coordinates are based on Louisiana Coordinate System of 1927, (North or South Zone), where applicable.

NOTE: The above description of the Tract nominated for lease has been provided and corrected, where required, exclusively by the nomination party. Any mineral lease selected from this Tract and awarded by the Louisiana State Mineral and Energy Board shall be without warranty of any kind, either express, implied, or statutory, including, but not limited to, the implied warranties of merchantability and fitness for a particular purpose. Should the mineral lease awarded by the Louisiana State Mineral and Energy Board be subsequently modified, cancelled or abrogated due to the existence of conflicting leases, operating agreements, private claims or other future obligations or conditions which may affect all or any portion of the leased Tract, it shall not relieve the Lessee of the obligation to pay any bonus due thereon to the Louisiana State Mineral and Energy Board, nor shall the Louisiana State Mineral and Energy Board be obligated to refund any consideration paid by the Lessor prior to such modification, cancellation, or abrogation, including, but not limited to, bonuses, rentals and royalties.

NOTE: The State of Louisiana does hereby reserve, and this lease shall be subject to, the imprescriptible right of surface use in the nature of a servitude in favor of the Department of Natural Resources, including its Offices and Commissions, for the sole purpose of implementing, constructing, servicing and maintaining approved coastal zone management and/or restoration projects. Utilization of any and all rights derived under this lease by the mineral lessee, its agents, successors or assigns, shall not interfere with nor hinder the reasonable surface use by the Department of Natural Resources, its Offices or Commissions, as herein above reserved.

Applicant: THEOPHILUS OIL, GAS & LAND SERVICES, LLC

Bidder	Cash Payment	Price/ Acre	Rental	Oil	Gas	Other

Legend



19120015

Active\_Leases

0 2,000 Feet



LAFOURCHE

P.O.B.

A0320

SL 1480

SL 14589

TIMBALIER BAY

SL 3258

SL 3258

#### **TRACT 45237 - Lafourche Parish, Louisiana**

All of the lands now or formerly constituting the beds and bottoms of all water bodies of every nature and description as to which title is vested in the State of Louisiana, together with all islands arising therein and other lands formed by accretion or by reliction, where allowed by law, excepting tax adjudicated lands, and not presently under mineral lease on December 11, 2019, situated in Lafourche Parish, Louisiana, and more particularly described as follows: Beginning at a point on the East boundary of State Lease No. 1480, as amended, and a point on the West boundary of State Lease No. 14589, as amended, having Coordinates of X = 2,317,736.09 and Y = 199,161.00; thence North 4,500.00 feet along the East boundary of said State Lease No. 1480, as amended, to a point located on an interior corner of said State Lease No. 14589, as amended, having Coordinates of X = 2,317,736.09 and Y = 203,661.00; thence along the boundary of said State Lease No. 14589, as amended, the following courses and distances: East 3,300.00 feet to a point having Coordinates of X = 2,321,036.09 and Y = 203,661.00, South 38 degrees 00 minutes 00 seconds East 1,200.00 feet to a point having Coordinates of X = 2,321,774.88 and Y = 202,715.39; South 43 degrees 00 minutes 00 seconds West 2,250.01 feet to a point having Coordinates of X = 2,320,240.38 and Y = 201,069.84, South 47 degrees 47 minutes 18 seconds West 2,841.08 feet to a point having Coordinates of X = 2,318,136.09 and Y = 199,161.00 and West 400.00 feet to the point of beginning, containing approximately **266.88 acres**, all as more particularly outlined on a plat on file in the Office of Mineral Resources, Department of Natural Resources. All bearings, distances and coordinates are based on Louisiana Coordinate System of 1927, (North or South Zone), where applicable.

NOTE: The above description of the Tract nominated for lease has been provided and corrected, where required, exclusively by the nomination party. Any mineral lease selected from this Tract and awarded by the Louisiana State Mineral and Energy Board shall be without warranty of any kind, either express, implied, or statutory, including, but not limited to, the implied warranties of merchantability and fitness for a particular purpose. Should the mineral lease awarded by the Louisiana State Mineral and Energy Board be subsequently modified, cancelled or abrogated due to the existence of conflicting leases, operating agreements, private claims or other future obligations or conditions which may affect all or any portion of the leased Tract, it shall not relieve the Lessee of the obligation to pay any bonus due thereon to the Louisiana State Mineral and Energy Board, nor shall the Louisiana State Mineral and Energy Board be obligated to refund any consideration paid by the Lessor prior to such modification, cancellation, or abrogation, including, but not limited to, bonuses, rentals and royalties.

NOTE: The State of Louisiana does hereby reserve, and this lease shall be subject to, the imprescriptible right of surface use in the nature of a servitude in favor of the Department of Natural Resources, including its Offices and Commissions, for the sole purpose of implementing, constructing, servicing and maintaining approved coastal zone management and/or restoration projects. Utilization of any and all rights derived under this

lease by the mineral lessee, its agents, successors or assigns, shall not interfere with nor hinder the reasonable surface use by the Department of Natural Resources, its Offices or Commissions, as herein above reserved.

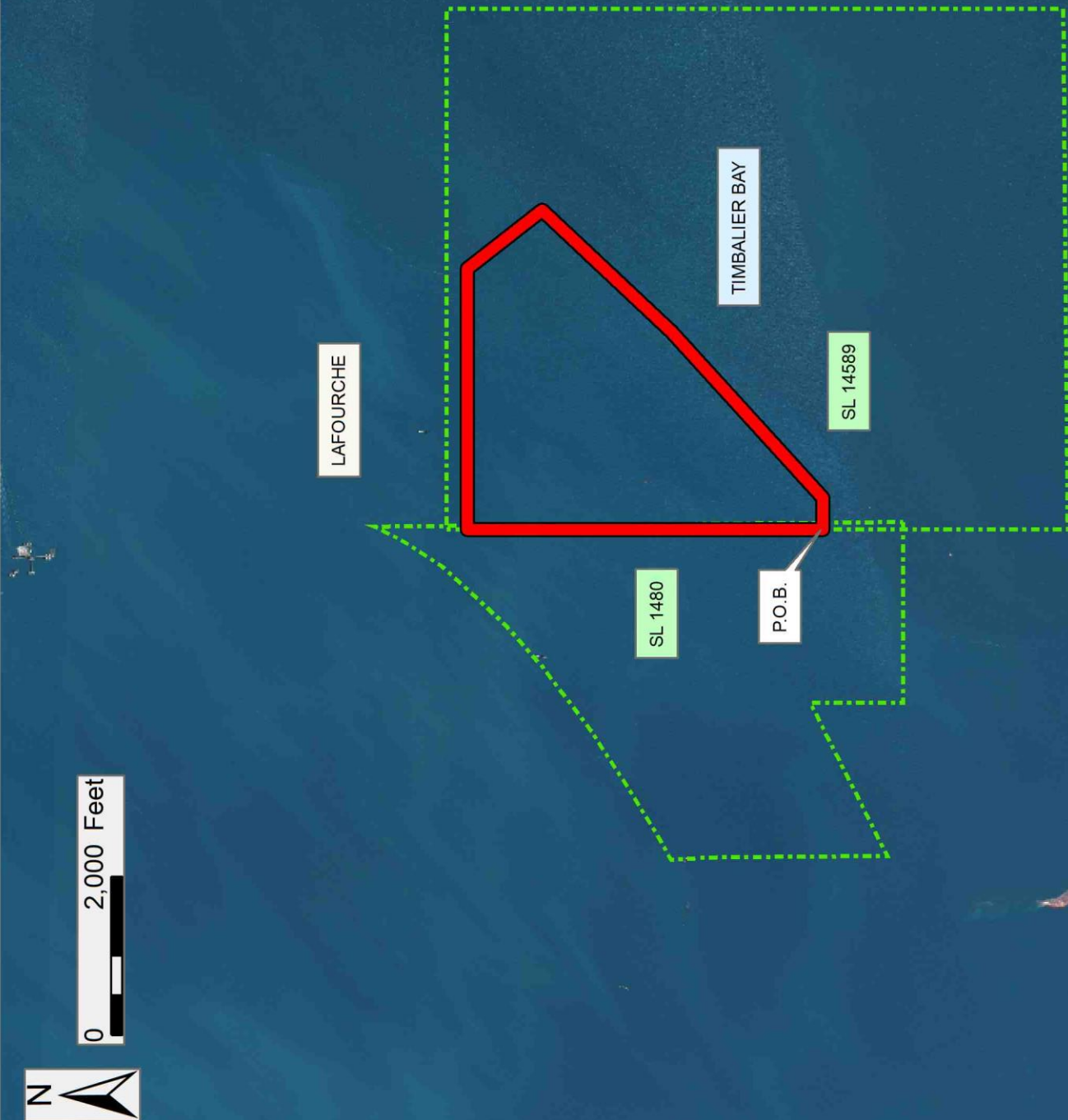
Applicant: THEOPHILUS OIL, GAS & LAND SERVICES, LLC

Bidder	Cash Payment	Price/ Acre	Rental	Oil	Gas	Other

**Legend**

19120016

Active\_Leases



**TRACT 45238 - Lafourche Parish, Louisiana**

All of the lands now or formerly constituting the beds and bottoms of all water bodies of every nature and description as to which title is vested in the State of Louisiana, together with all islands arising therein and other lands formed by accretion or by reliction, where allowed by law, excepting tax adjudicated lands, and not presently under mineral lease on December 11, 2019, situated in Lafourche Parish, Louisiana, and more particularly described as follows: Beginning at the Northeast corner of State Lease No. 14589, as amended, having Coordinates of X = 2,324,324.27 and Y = 203,924.29; thence East 9,000.00 feet to a point having Coordinates of X = 2,333,324.27 and Y = 203,924.29; thence South 7,806.25 feet to a point having Coordinates of X = 2,333,324.27 and Y = 196,118.04; thence West 9,000.00 feet to the Southeast corner of said State Lease No. 14589, having Coordinates of X = 2,324,324.27 and Y = 196,118.04; thence North 7,806.25 feet along the East boundary of said State Lease No. 14589 to the point of beginning, containing approximately **1,612.86 acres**, all as more particularly outlined on a plat on file in the Office of Mineral Resources, Department of Natural Resources. All bearings, distances and coordinates are based on Louisiana Coordinate System of 1927, (North or South Zone), where applicable.

NOTE: The above description of the Tract nominated for lease has been provided and corrected, where required, exclusively by the nomination party. Any mineral lease selected from this Tract and awarded by the Louisiana State Mineral and Energy Board shall be without warranty of any kind, either express, implied, or statutory, including, but not limited to, the implied warranties of merchantability and fitness for a particular purpose. Should the mineral lease awarded by the Louisiana State Mineral and Energy Board be subsequently modified, cancelled or abrogated due to the existence of conflicting leases, operating agreements, private claims or other future obligations or conditions which may affect all or any portion of the leased Tract, it shall not relieve the Lessee of the obligation to pay any bonus due thereon to the Louisiana State Mineral and Energy Board, nor shall the Louisiana State Mineral and Energy Board be obligated to refund any consideration paid by the Lessor prior to such modification, cancellation, or abrogation, including, but not limited to, bonuses, rentals and royalties.

NOTE: The State of Louisiana does hereby reserve, and this lease shall be subject to, the imprescriptible right of surface use in the nature of a servitude in favor of the Department of Natural Resources, including its Offices and Commissions, for the sole purpose of implementing, constructing, servicing and maintaining approved coastal zone management and/or restoration projects. Utilization of any and all rights derived under this lease by the mineral lessee, its agents, successors or assigns, shall not interfere with nor hinder the reasonable surface use by the Department of Natural Resources, its Offices or Commissions, as herein above reserved.

Applicant: THEOPHILUS OIL, GAS & LAND SERVICES, LLC

Bidder	Cash Payment	Price/ Acre	Rental	Oil	Gas	Other



0 2,000 Feet

Legend



19120017



Active\_Leases

LAFOURCHE

P.O.B.

SL 14589

TIMBALIER BAY

**TRACT 45239 - Lafourche and Terrebonne Parishes, Louisiana**

All of the lands now or formerly constituting the beds and bottoms of all water bodies of every nature and description as to which title is vested in the State of Louisiana, together with all islands arising therein and other lands formed by accretion or by reliction, where allowed by law, excepting tax adjudicated lands, and not presently under mineral lease on December 11, 2019, situated in Lafourche and Terrebonne Parishes, Louisiana, and more particularly described as follows: Beginning at a point having Coordinates of X = 2,307,396.54 and Y = 184,769.00; thence West 10,339.56 feet to a point having Coordinates of X = 2,297,056.98 and Y = 184,769.00; thence North 4,378.19 feet to a point having Coordinates of X = 2,297,056.98 and Y = 189,147.19; thence West 2,852.36 feet to a point having Coordinates of X = 2,294,204.62 and Y = 189,147.19; thence North 7,152.15 feet to a point having Coordinates of X = 2,294,204.62 and Y = 196,299.34; thence East 4,225.00 feet to the Northwest corner of State Lease No. 3599, as amended, having Coordinates of X = 2,298,429.62 and Y = 196,299.34; thence South 49 degrees 19 minutes 18 seconds East 11,823.77 feet along the boundary of said State Lease No. 3599 to a point having Coordinates of X = 2,307,396.54 and Y = 188,592.47; thence South 3,823.47 feet to the point of beginning, **LESS AND EXCEPT** any Vacant State Lands, being lands which are not currently beds or bottoms of water bodies, and which have not been severed from the ownership of the State of Louisiana; such excepted Vacant State Lands being portions of Lots 1, 2, 3, 4 and 5, Section 35, and Lots 1 and 2, Section 34, Township 21 South, Range 20 East, Louisiana Meridian, situated in Lafourche Parish, Louisiana, as depicted on Sheet 2 (of 2 sheets) of the survey prepared by Norville E. Shearer, approved by the United States Department of the Interior Bureau of Land Management on June 18, 1959, covering lands transferred to the State of Louisiana pursuant to the Swamp Lands Acts of March 2, 1849 and September 30, 1850, containing approximately **2,409 acres**, all as more particularly outlined on a plat on file in the Office of Mineral Resources, Department of Natural Resources. All bearings, distances and coordinates are based on Louisiana Coordinate System of 1927, (North or South Zone), where applicable.

NOTE: The above description of the Tract nominated for lease has been provided and corrected, where required, exclusively by the nomination party. Any mineral lease selected from this Tract and awarded by the Louisiana State Mineral and Energy Board shall be without warranty of any kind, either express, implied, or statutory, including, but not limited to, the implied warranties of merchantability and fitness for a particular purpose. Should the mineral lease awarded by the Louisiana State Mineral and Energy Board be subsequently modified, cancelled or abrogated due to the existence of conflicting leases, operating agreements, private claims or other future obligations or conditions which may affect all or any portion of the leased Tract, it shall not relieve the Lessee of the obligation to pay any bonus due thereon to the Louisiana State Mineral and Energy Board, nor shall the Louisiana State Mineral and Energy Board be obligated to refund any consideration paid by the Lessor prior to such modification, cancellation, or abrogation, including, but not limited to, bonuses, rentals and royalties.

NOTE: The State of Louisiana does hereby reserve, and this lease shall be subject to, the imprescriptible right of surface use in the nature of a servitude in favor of the Department of Natural Resources, including its Offices and Commissions, for the sole purpose of implementing, constructing, servicing and maintaining approved coastal zone management and/or restoration projects. Utilization of any and all rights derived under this lease by the mineral lessee, its agents, successors or assigns, shall not interfere with nor hinder the reasonable surface use by the Department of Natural Resources, its Offices or Commissions, as herein above reserved.

Applicant: THEOPHILUS OIL, GAS & LAND SERVICES, LLC

Bidder	Cash Payment	Price/ Acre	Rental	Oil	Gas	Other

**Legend**

19120018

Active\_Leases

Counties

