

TRACT 45220 - Plaquemines Parish, Louisiana

All of the lands now or formerly constituting the beds and bottoms of all water bodies of every nature and description as to which title is vested in the State of Louisiana, together with all islands arising therein and other lands formed by accretion or by reliction, where allowed by law, excepting tax adjudicated lands, and not presently under mineral lease on December 11, 2019, situated in Plaquemines Parish, Louisiana, and more particularly described as follows: Beginning at the Northeast corner of State Lease No. 2376 having Coordinates of X = 2,504,105.46 and Y = 276,903.26; thence South 89 degrees 15 minutes 00 seconds West 7,952.84 feet to the Northwest corner of said State Lease No. 2376, also being a point on the Eastern boundary of State Lease No. 2104 having Coordinates of X = 2,496,153.31 and Y = 276,799.16; thence North 00 degrees 45 minutes 00 seconds West 6,399.91 feet along the Eastern boundary of said State Lease No. 2104 to its Northeast corner having Coordinates of X = 2,496,069.54 and Y = 283,198.52; thence North 3,401.48 feet to a point having Coordinates of X = 2,496,069.54 and Y = 286,600.00; thence East 15,033.33 feet to a point having Coordinates of X = 2,511,102.87 and Y = 286,600.00; thence South 9,696.74 feet to a point having Coordinates of X = 2,511,102.87 and Y = 276,903.26; thence West 6,997.41 feet to the point of beginning, containing approximately **255 acres**, all as more particularly outlined on a plat on file in the Office of Mineral Resources, Department of Natural Resources. All bearings, distances and coordinates are based on Louisiana Coordinate System of 1927, (North or South Zone), where applicable.

NOTE: The above description of the Tract nominated for lease has been provided and corrected, where required, exclusively by the nomination party. Any mineral lease selected from this Tract and awarded by the Louisiana State Mineral and Energy Board shall be without warranty of any kind, either express, implied, or statutory, including, but not limited to, the implied warranties of merchantability and fitness for a particular purpose. Should the mineral lease awarded by the Louisiana State Mineral and Energy Board be subsequently modified, cancelled or abrogated due to the existence of conflicting leases, operating agreements, private claims or other future obligations or conditions which may affect all or any portion of the leased Tract, it shall not relieve the Lessee of the obligation to pay any bonus due thereon to the Louisiana State Mineral and Energy Board, nor shall the Louisiana State Mineral and Energy Board be obligated to refund any consideration paid by the Lessor prior to such modification, cancellation, or abrogation, including, but not limited to, bonuses, rentals and royalties.

NOTE: The State of Louisiana does hereby reserve, and this lease shall be subject to, the imprescriptible right of surface use in the nature of a servitude in favor of the Department of Natural Resources, including its Offices and Commissions, for the sole purpose of implementing, constructing, servicing and maintaining approved coastal zone management and/or restoration projects. Utilization of any and all rights derived under this lease by the mineral lessee, its agents, successors or assigns, shall not

interfere with nor hinder the reasonable surface use by the Department of Natural Resources, its Offices or Commissions, as herein above reserved.

Applicant: OIL LAND SERVICES, INC.

Bidder	Cash Payment	Price/Acre	Rental	Oil	Gas	Other

Legend

- 19120024
- Active_Leases
- Counties

0 2,000 Feet



PLAQUEMINES



LAKE WASHINGTON

P.O.B.

SL 2104

SL 2376

TRACT 45221 - Plaquemines Parish, Louisiana

All of the lands now or formerly constituting the beds and bottoms of all water bodies of every nature and description as to which title is vested in the State of Louisiana, together with all islands arising therein and other lands formed by accretion or by reliction, where allowed by law, excepting tax adjudicated lands, and not presently under mineral lease on December 11, 2019, situated in Plaquemines Parish, Louisiana, and more particularly described as follows: Beginning at the Northeast corner of State Lease No. 2376 having Coordinates of X = 2,504,105.46 and Y = 276,903.26; thence East 6,997.41 feet to a point having Coordinates of X = 2,511,102.87 and Y = 276,903.26; thence South 12,871.53 feet to a point having Coordinates of X = 2,511,102.87 and Y = 264,031.73; thence West 9,450.03 feet to the Southeast corner of Tract 2 of State Lease No. 1464, as amended having Coordinates of X = 2,501,652.84 and Y = 264,031.73; thence along the boundaries of said Tract 2 of State Lease No. 1464 the following courses: North 00 degrees 54 minutes 20 seconds West 4,517.12 feet to a point having Coordinates of X = 2,501,581.45 and Y = 268,548.29; thence North 86 degrees 00 minutes 08 seconds East 3,000.00 feet to a point having Coordinates of X = 2,504,574.15 and Y = 268,757.44; thence North 3,151.53 feet to a point having Coordinates of X = 2,504,574.15 and Y = 271,908.97; thence South 89 degrees 15 minutes 00 seconds West 403.27 feet to the Southeast corner of said State Lease No. 2376 having Coordinates of X = 2,504,170.91 and Y = 271,903.69; thence North 00 degrees 45 minutes 00 seconds West 5,000.00 feet along the east boundary of said State Lease No. 2376 to the point of beginning, containing approximately **1,685 acres**, all as more particularly outlined on a plat on file in the Office of Mineral Resources, Department of Natural Resources. All bearings, distances and coordinates are based on Louisiana Coordinate System of 1927, (North or South Zone), where applicable.

NOTE: The above description of the Tract nominated for lease has been provided and corrected, where required, exclusively by the nomination party. Any mineral lease selected from this Tract and awarded by the Louisiana State Mineral and Energy Board shall be without warranty of any kind, either express, implied, or statutory, including, but not limited to, the implied warranties of merchantability and fitness for a particular purpose. Should the mineral lease awarded by the Louisiana State Mineral and Energy Board be subsequently modified, cancelled or abrogated due to the existence of conflicting leases, operating agreements, private claims or other future obligations or conditions which may affect all or any portion of the leased Tract, it shall not relieve the Lessee of the obligation to pay any bonus due thereon to the Louisiana State Mineral and Energy Board, nor shall the Louisiana State Mineral and Energy Board be obligated to refund any consideration paid by the Lessor prior to such modification, cancellation, or abrogation, including, but not limited to, bonuses, rentals and royalties.

NOTE: The State of Louisiana does hereby reserve, and this lease shall be subject to, the imprescriptible right of surface use in the nature of a servitude in favor of the Department of Natural Resources, including its Offices and Commissions, for the sole purpose of implementing, constructing,

servicing and maintaining approved coastal zone management and/or restoration projects. Utilization of any and all rights derived under this lease by the mineral lessee, its agents, successors or assigns, shall not interfere with nor hinder the reasonable surface use by the Department of Natural Resources, its Offices or Commissions, as herein above reserved.

Applicant: OIL LAND SERVICES, INC.

Bidder	Cash Payment	Price/Acre	Rental	Oil	Gas	Other

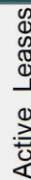


0 2,500 Feet

Legend



19120025



Active_Leases

PLAQUEMINES

P.O.B.

SL 2376

ROBINSON CANAL

SL 1464

BILLET BAY

LAKE WASHINGTON

TRACT 45222 - Plaquemines Parish, Louisiana

All of the lands now or formerly constituting the beds and bottoms of all water bodies of every nature and description as to which title is vested in the State of Louisiana, together with all islands arising therein and other lands formed by accretion or by reliction, where allowed by law, excepting tax adjudicated lands, and not presently under mineral lease on December 11, 2019, situated in Plaquemines Parish, Louisiana, and more particularly described as follows: Beginning at the Southeast corner of State Lease No. 2376 having Coordinates of X = 2,504,170.91 and Y = 271,903.69, said point also being on the Northern boundary of Tract 2 of State Lease No. 1464, as amended; thence along the boundary of said Tract 2 of said State Lease No. 1464, as amended, the following courses: North 89 degrees 15 minutes 00 seconds East 403.27 feet to a point having Coordinates of X = 2,504,574.15 and Y = 272,908.97, South 3,151.33 feet to a point having Coordinates of X = 2,504,574.15 and Y = 268,757.44, South 86 degrees 00 minutes 08 seconds West 3,000.00 feet to a point having Coordinates of X = 2,501,581.45 and Y = 268,548.29, South 00 degrees 54 minutes 20 seconds East 4,517.12 feet to a point having Coordinates of X = 2,501,652.84 and Y = 264,031.73, South 87 degrees 34 minutes 51 seconds West 969.48 feet to a point having Coordinates of X = 2,500,684.22 and Y = 263,990.82, said point also being the Northeast corner of State Lease No. 21893, South 87 degrees 34 minutes 56 seconds West 2,777.33 feet to a point having Coordinates of X = 2,497,909.36 and Y = 263,873.66, said point also being the Northwest corner of said State Lease No. 21893, South 87 degrees 34 minutes 53 seconds West 1,535.11 feet to a point having Coordinates of X = 2,496,375.62 and Y = 263,808.88, North 00 degrees 54 minutes 20 seconds West 2,245.60 feet to a point having Coordinates of X = 2,496,340.13 and Y = 266,054.20; thence North 5,746.95 feet to a point having Coordinates of X = 2,496,340.13 and Y = 271,801.09, being a point on the Northern boundary of said Tract 2 of said State Lease No. 1464, as amended, as well as a point on the Southern boundary of said State Lease No. 2376; thence along the boundary of said State Lease No. 2376 and said Tract 2 of said State Lease No. 1464, as amended, North 89 degrees 15 minutes 00 seconds East 7,831.45 feet to the point of beginning, **LESS AND EXCEPT** all that portion of State Lease No. 1464, as amended, that lies within the above described tract containing approximately **590 acres**, all as more particularly outlined on a plat on file in the Office of Mineral Resources, Department of Natural Resources. All bearings, distances and coordinates are based on Louisiana Coordinate System of 1927, (North or South Zone), where applicable.

NOTE: The above description of the Tract nominated for lease has been provided and corrected, where required, exclusively by the nomination party. Any mineral lease selected from this Tract and awarded by the Louisiana State Mineral and Energy Board shall be without warranty of any kind, either express, implied, or statutory, including, but not limited to, the implied warranties of merchantability and fitness for a particular purpose. Should the mineral lease awarded by the Louisiana State Mineral and Energy Board be subsequently modified, cancelled or abrogated due to the existence of conflicting leases, operating agreements, private claims or other future

obligations or conditions which may affect all or any portion of the leased Tract, it shall not relieve the Lessee of the obligation to pay any bonus due thereon to the Louisiana State Mineral and Energy Board, nor shall the Louisiana State Mineral and Energy Board be obligated to refund any consideration paid by the Lessor prior to such modification, cancellation, or abrogation, including, but not limited to, bonuses, rentals and royalties.

NOTE: The State of Louisiana does hereby reserve, and this lease shall be subject to, the imprescriptible right of surface use in the nature of a servitude in favor of the Department of Natural Resources, including its Offices and Commissions, for the sole purpose of implementing, constructing, servicing and maintaining approved coastal zone management and/or restoration projects. Utilization of any and all rights derived under this lease by the mineral lessee, its agents, successors or assigns, shall not interfere with nor hinder the reasonable surface use by the Department of Natural Resources, its Offices or Commissions, as herein above reserved.

Applicant: OIL LAND SERVICES, INC.

Bidder	Cash Payment	Price/Acre	Rental	Oil	Gas	Other

Legend

19120026



Active_Leases



New_Waterbottom



0 2,000 Feet



PLAQUEMINES

SL 2376

ROBINSON CANAL

P.O.B.

LAKE WASHINGTON

BILLET BAY

SL 21893

RATTLESNAKE BAYOU

SL 1464

BARATARIA BAY

TRACT 45223 - Terrebonne Parish, Louisiana

All of the lands now or formerly constituting the beds and bottoms of all water bodies of every nature and description as to which title is vested in the State of Louisiana, together with all islands arising therein and other lands formed by accretion or by reliction, where allowed by law, excepting tax adjudicated lands, and not presently under mineral lease on December 11, 2019, situated in Terrebonne Parish, Louisiana, and more particularly described as follows: Beginning at a point having Coordinates of X = 2,284,919.15 and Y = 223,619.51; thence East 8,000.00 feet to a point having Coordinates of X = 2,292,919.15 and Y = 223,619.51; thence South 12,000.00 feet to a point having Coordinates of X = 2,292,919.15 and Y = 211,619.51; thence West 8,000.00 feet to a point having Coordinates of X = 2,284,919.15 and Y = 211,619.51; thence North 12,000.00 feet to the point of beginning, **LESS AND EXCEPT** any right, title, and interest in lands owned by and not under lease from the State of Louisiana, on behalf of the Terrebonne Parish School Board, situated in Section 16, Township 21 South, Range 20 East, Terrebonne Parish, Louisiana, contained within the above described tract, containing approximately **2,176 acres**, all as more particularly outlined on a plat on file in the Office of Mineral Resources, Department of Natural Resources. All bearings, distances and coordinates are based on Louisiana Coordinate System of 1927, (North or South Zone), where applicable.

NOTE: The above description of the Tract nominated for lease has been provided and corrected, where required, exclusively by the nomination party. Any mineral lease selected from this Tract and awarded by the Louisiana State Mineral and Energy Board shall be without warranty of any kind, either express, implied, or statutory, including, but not limited to, the implied warranties of merchantability and fitness for a particular purpose. Should the mineral lease awarded by the Louisiana State Mineral and Energy Board be subsequently modified, cancelled or abrogated due to the existence of conflicting leases, operating agreements, private claims or other future obligations or conditions which may affect all or any portion of the leased Tract, it shall not relieve the Lessee of the obligation to pay any bonus due thereon to the Louisiana State Mineral and Energy Board, nor shall the Louisiana State Mineral and Energy Board be obligated to refund any consideration paid by the Lessor prior to such modification, cancellation, or abrogation, including, but not limited to, bonuses, rentals and royalties.

NOTE: The State of Louisiana does hereby reserve, and this lease shall be subject to, the imprescriptible right of surface use in the nature of a servitude in favor of the Department of Natural Resources, including its Offices and Commissions, for the sole purpose of implementing, constructing, servicing and maintaining approved coastal zone management and/or restoration projects. Utilization of any and all rights derived under this lease by the mineral lessee, its agents, successors or assigns, shall not interfere with nor hinder the reasonable surface use by the Department of Natural Resources, its Offices or Commissions, as herein above reserved.

Applicant: THEOPHILUS OIL, GAS & LAND SERVICES, LLC

Bidder	Cash Payment	Price/Acre	Rental	Oil	Gas	Other

Legend

- 19120002
- Counties

TERREBONNE

LAFOURCHE

LAKE BARRE

0 2,000 Feet

P.O.B.



Office of Mineral Resources, Acres: 2176 Tract Number: 45223

TRACT 45224 - Lafourche and Terrebonne Parishes, Louisiana

All of the lands now or formerly constituting the beds and bottoms of all water bodies of every nature and description as to which title is vested in the State of Louisiana, together with all islands arising therein and other lands formed by accretion or by reliction, where allowed by law, excepting tax adjudicated lands, and not presently under mineral lease on December 11, 2019, situated in Lafourche and Terrebonne Parishes, Louisiana, and more particularly described as follows: Beginning at a point having Coordinates of X = 2,292,919.15 and Y = 223,619.51; thence East 9,000.00 feet to a point having Coordinates of X = 2,301,919.15 and Y = 223,619.51; thence South 9,000.00 feet to a point on the Northern boundary of State Lease No. 21782 having Coordinates of X = 2,301,919.15 and Y = 214,619.51; thence West 3,000.00 feet along said Northern boundary of said State Lease No. 21782 to its Northwest corner, having Coordinates of X = 2,298,919.15 and Y = 214,619.51; thence West 6,000.00 feet to a point having Coordinates of X = 2,292,919.15 and Y = 214,619.51; thence North 9,000.00 feet to the point of beginning, containing approximately **1,447 acres**, all as more particularly outlined on a plat on file in the Office of Mineral Resources, Department of Natural Resources. All bearings, distances and coordinates are based on Louisiana Coordinate System of 1927, (North or South Zone), where applicable.

NOTE: The above description of the Tract nominated for lease has been provided and corrected, where required, exclusively by the nomination party. Any mineral lease selected from this Tract and awarded by the Louisiana State Mineral and Energy Board shall be without warranty of any kind, either express, implied, or statutory, including, but not limited to, the implied warranties of merchantability and fitness for a particular purpose. Should the mineral lease awarded by the Louisiana State Mineral and Energy Board be subsequently modified, cancelled or abrogated due to the existence of conflicting leases, operating agreements, private claims or other future obligations or conditions which may affect all or any portion of the leased Tract, it shall not relieve the Lessee of the obligation to pay any bonus due thereon to the Louisiana State Mineral and Energy Board, nor shall the Louisiana State Mineral and Energy Board be obligated to refund any consideration paid by the Lessor prior to such modification, cancellation, or abrogation, including, but not limited to, bonuses, rentals and royalties.

NOTE: The State of Louisiana does hereby reserve, and this lease shall be subject to, the imprescriptible right of surface use in the nature of a servitude in favor of the Department of Natural Resources, including its Offices and Commissions, for the sole purpose of implementing, constructing, servicing and maintaining approved coastal zone management and/or restoration projects. Utilization of any and all rights derived under this lease by the mineral lessee, its agents, successors or assigns, shall not interfere with nor hinder the reasonable surface use by the Department of Natural Resources, its Offices or Commissions, as herein above reserved.

Applicant: THEOPHILUS OIL, GAS & LAND SERVICES, LLC

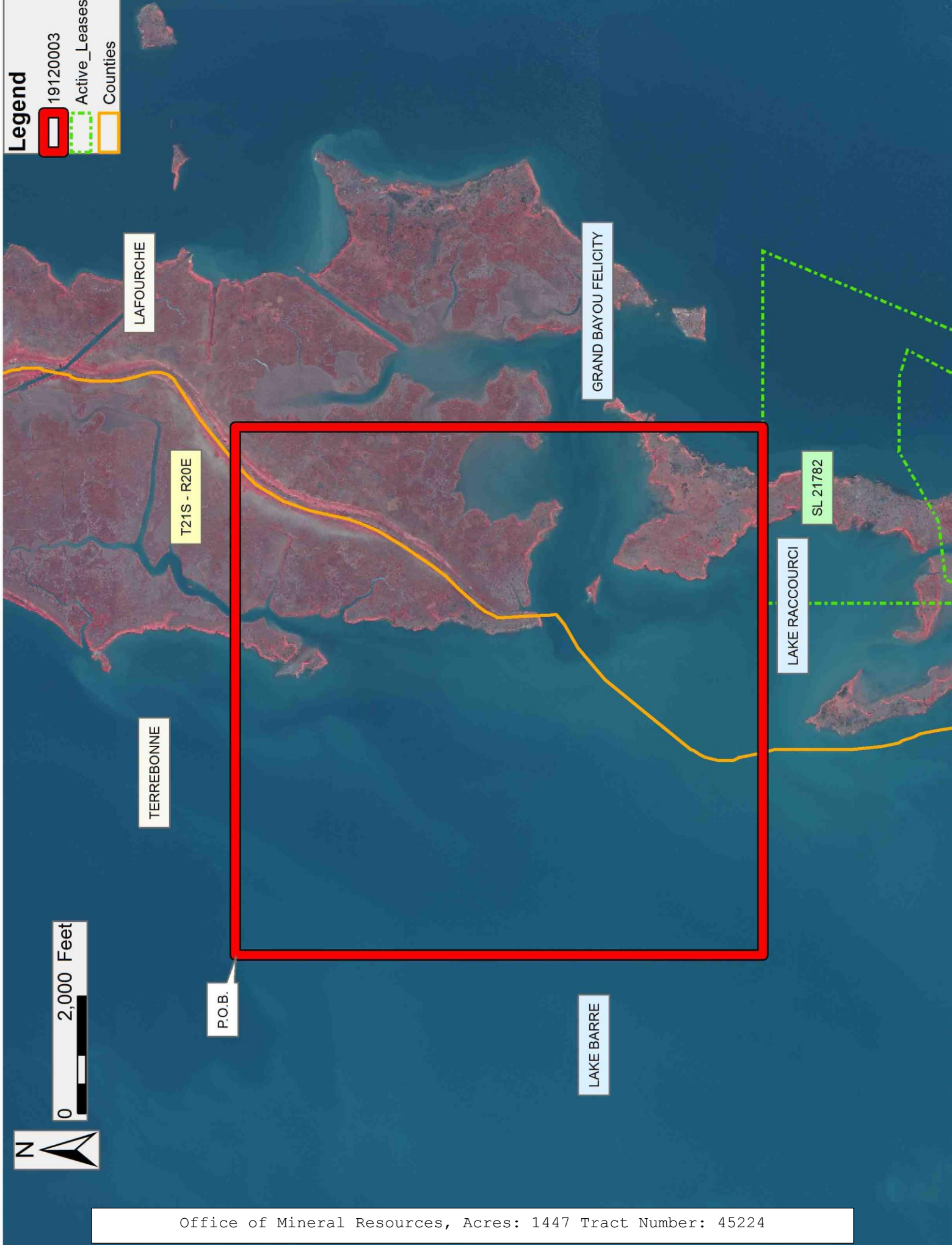
Bidder	Cash Payment	Price/Acre	Rental	Oil	Gas	Other

Legend

- 19120003
- Active_Leases
- Counties



0 2,000 Feet



Office of Mineral Resources, Acres: 1447 Tract Number: 45224

TRACT 45225 - Lafourche Parish, Louisiana

All of the lands now or formerly constituting the beds and bottoms of all water bodies of every nature and description as to which title is vested in the State of Louisiana, together with all islands arising therein and other lands formed by accretion or by reliction, where allowed by law, excepting tax adjudicated lands, and not presently under mineral lease on December 11, 2019, situated in Lafourche Parish, Louisiana, and more particularly described as follows: Beginning at a point having Coordinates of X = 2,301,919.15 and Y = 223,619.51; thence East 9,000.00 feet to a point having Coordinates of X = 2,310,919.15 and Y = 223,619.51; thence South 9,000.00 feet to a point having Coordinates of X = 2,310,919.15 and Y = 214,619.51; thence West 6,000.00 feet to the Northeast corner of State Lease No. 21782, having Coordinates of X = 2,304,919.15 and Y = 214,619.51; thence West 3,000.00 feet along the Northern boundary of said State Lease No. 21782 to a point having Coordinates of X = 2,301,919.15 and Y = 214,619.51; thence North 9,000.00 feet to the point of beginning, containing approximately **1,399 acres**, all as more particularly outlined on a plat on file in the Office of Mineral Resources, Department of Natural Resources. All bearings, distances and coordinates are based on Louisiana Coordinate System of 1927, (North or South Zone), where applicable.

NOTE: The above description of the Tract nominated for lease has been provided and corrected, where required, exclusively by the nomination party. Any mineral lease selected from this Tract and awarded by the Louisiana State Mineral and Energy Board shall be without warranty of any kind, either express, implied, or statutory, including, but not limited to, the implied warranties of merchantability and fitness for a particular purpose. Should the mineral lease awarded by the Louisiana State Mineral and Energy Board be subsequently modified, cancelled or abrogated due to the existence of conflicting leases, operating agreements, private claims or other future obligations or conditions which may affect all or any portion of the leased Tract, it shall not relieve the Lessee of the obligation to pay any bonus due thereon to the Louisiana State Mineral and Energy Board, nor shall the Louisiana State Mineral and Energy Board be obligated to refund any consideration paid by the Lessor prior to such modification, cancellation, or abrogation, including, but not limited to, bonuses, rentals and royalties.

NOTE: The State of Louisiana does hereby reserve, and this lease shall be subject to, the imprescriptible right of surface use in the nature of a servitude in favor of the Department of Natural Resources, including its Offices and Commissions, for the sole purpose of implementing, constructing, servicing and maintaining approved coastal zone management and/or restoration projects. Utilization of any and all rights derived under this lease by the mineral lessee, its agents, successors or assigns, shall not interfere with nor hinder the reasonable surface use by the Department of Natural Resources, its Offices or Commissions, as herein above reserved.

Applicant: THEOPHILUS OIL, GAS & LAND SERVICES, LLC

Bidder	Cash Payment	Price/Acre	Rental	Oil	Gas	Other

Legend

19120004
Active_Leases



Office of Mineral Resources, Acres: 1399 Tract Number: 45225

TRACT 45226 - Lafourche Parish, Louisiana

All of the lands now or formerly constituting the beds and bottoms of all water bodies of every nature and description as to which title is vested in the State of Louisiana, together with all islands arising therein and other lands formed by accretion or by reliction, where allowed by law, excepting tax adjudicated lands, and not presently under mineral lease on December 11, 2019, situated in Lafourche Parish, Louisiana, and more particularly described as follows: Beginning at a point having Coordinates of X = 2,310,919.15 and Y = 223,619.51; thence East 10,000.00 feet to a point having Coordinates of X = 2,320,919.15 and Y = 223,619.51; thence South 10,000.00 feet to a point having Coordinates of X = 2,320,919.15 and Y = 213,619.51; thence West 10,000.00 feet to a point having Coordinates of X = 2,310,919.15 and Y = 213,619.51; thence North 10,000.00 feet to the point of beginning, **LESS AND EXCEPT** any right, title, and interest in lands owned by and not under lease from the State of Louisiana, on behalf of the Lafourche Parish School Board, situated in Section 16, Township 21 South, Range 21 East, Lafourche Parish, Louisiana, contained within the above described tract, containing approximately **2,295.69 acres**, all as more particularly outlined on a plat on file in the Office of Mineral Resources, Department of Natural Resources. All bearings, distances and coordinates are based on Louisiana Coordinate System of 1927, (North or South Zone), where applicable.

NOTE: The above description of the Tract nominated for lease has been provided and corrected, where required, exclusively by the nomination party. Any mineral lease selected from this Tract and awarded by the Louisiana State Mineral and Energy Board shall be without warranty of any kind, either express, implied, or statutory, including, but not limited to, the implied warranties of merchantability and fitness for a particular purpose. Should the mineral lease awarded by the Louisiana State Mineral and Energy Board be subsequently modified, cancelled or abrogated due to the existence of conflicting leases, operating agreements, private claims or other future obligations or conditions which may affect all or any portion of the leased Tract, it shall not relieve the Lessee of the obligation to pay any bonus due thereon to the Louisiana State Mineral and Energy Board, nor shall the Louisiana State Mineral and Energy Board be obligated to refund any consideration paid by the Lessor prior to such modification, cancellation, or abrogation, including, but not limited to, bonuses, rentals and royalties.

NOTE: The State of Louisiana does hereby reserve, and this lease shall be subject to, the imprescriptible right of surface use in the nature of a servitude in favor of the Department of Natural Resources, including its Offices and Commissions, for the sole purpose of implementing, constructing, servicing and maintaining approved coastal zone management and/or restoration projects. Utilization of any and all rights derived under this lease by the mineral lessee, its agents, successors or assigns, shall not interfere with nor hinder the reasonable surface use by the Department of Natural Resources, its Offices or Commissions, as herein above reserved.

Applicant: THEOPHILUS OIL, GAS & LAND SERVICES, LLC

Bidder	Cash Payment	Price/Acre	Rental	Oil	Gas	Other

Legend

19120005



JEAN PLAISANCE BAY

LAFOURCHE

LAKE RACCOURCI



P.O.B.

0 2,000 Feet



Office of Mineral Resources, Acres: 2295.69 Tract Number: 45226

TRACT 45227 - Lafourche and Terrebonne Parishes, Louisiana

All of the lands now or formerly constituting the beds and bottoms of all water bodies of every nature and description as to which title is vested in the State of Louisiana, together with all islands arising therein and other lands formed by accretion or by reliction, where allowed by law, excepting tax adjudicated lands, and not presently under mineral lease on December 11, 2019, situated in Lafourche and Terrebonne Parishes, Louisiana, and more particularly described as follows: Beginning at a point having Coordinates of X = 2,292,919.15 and Y = 214,619.51; thence East 6,000.00 feet to the Northwest corner of State Lease No. 21782 having Coordinates of X = 2,298,919.15 and Y = 214,619.51; thence South 4,397.86 feet along the West line of said State Lease No. 21782 to a point on the boundary of State Lease No. 21620 having Coordinates of X = 2,298,919.15 and Y = 210,221.65; thence along said boundary of said State Lease No. 21620 the following courses and distances: South 16 degrees 54 minutes 47 seconds West 755.05 feet to a point having Coordinates of X = 2,298,699.49 and Y = 209,499.26, and South 66 degrees 32 minutes 47 seconds East 239.44 feet to a point on the boundary of said State Lease No. 21782, having Coordinates of X = 2,298,919.15 and Y = 209,403.95; thence South 784.44 feet along said boundary of said State Lease No. 21782 to a point having Coordinates of X = 2,298,919.15 and Y = 208,619.52; thence West 6,000.00 feet to a point having Coordinates of X = 2,292,919.15 and Y = 208,619.52; thence North 5,999.99 feet to the point of beginning, containing approximately **767 acres**, all as more particularly outlined on a plat on file in the Office of Mineral Resources, Department of Natural Resources. All bearings, distances and coordinates are based on Louisiana Coordinate System of 1927, (North or South Zone), where applicable.

NOTE: The above description of the Tract nominated for lease has been provided and corrected, where required, exclusively by the nomination party. Any mineral lease selected from this Tract and awarded by the Louisiana State Mineral and Energy Board shall be without warranty of any kind, either express, implied, or statutory, including, but not limited to, the implied warranties of merchantability and fitness for a particular purpose. Should the mineral lease awarded by the Louisiana State Mineral and Energy Board be subsequently modified, cancelled or abrogated due to the existence of conflicting leases, operating agreements, private claims or other future obligations or conditions which may affect all or any portion of the leased Tract, it shall not relieve the Lessee of the obligation to pay any bonus due thereon to the Louisiana State Mineral and Energy Board, nor shall the Louisiana State Mineral and Energy Board be obligated to refund any consideration paid by the Lessor prior to such modification, cancellation, or abrogation, including, but not limited to, bonuses, rentals and royalties.

NOTE: The State of Louisiana does hereby reserve, and this lease shall be subject to, the imprescriptible right of surface use in the nature of a servitude in favor of the Department of Natural Resources, including its Offices and Commissions, for the sole purpose of implementing, constructing, servicing and maintaining approved coastal zone management and/or restoration projects. Utilization of any and all rights derived under this

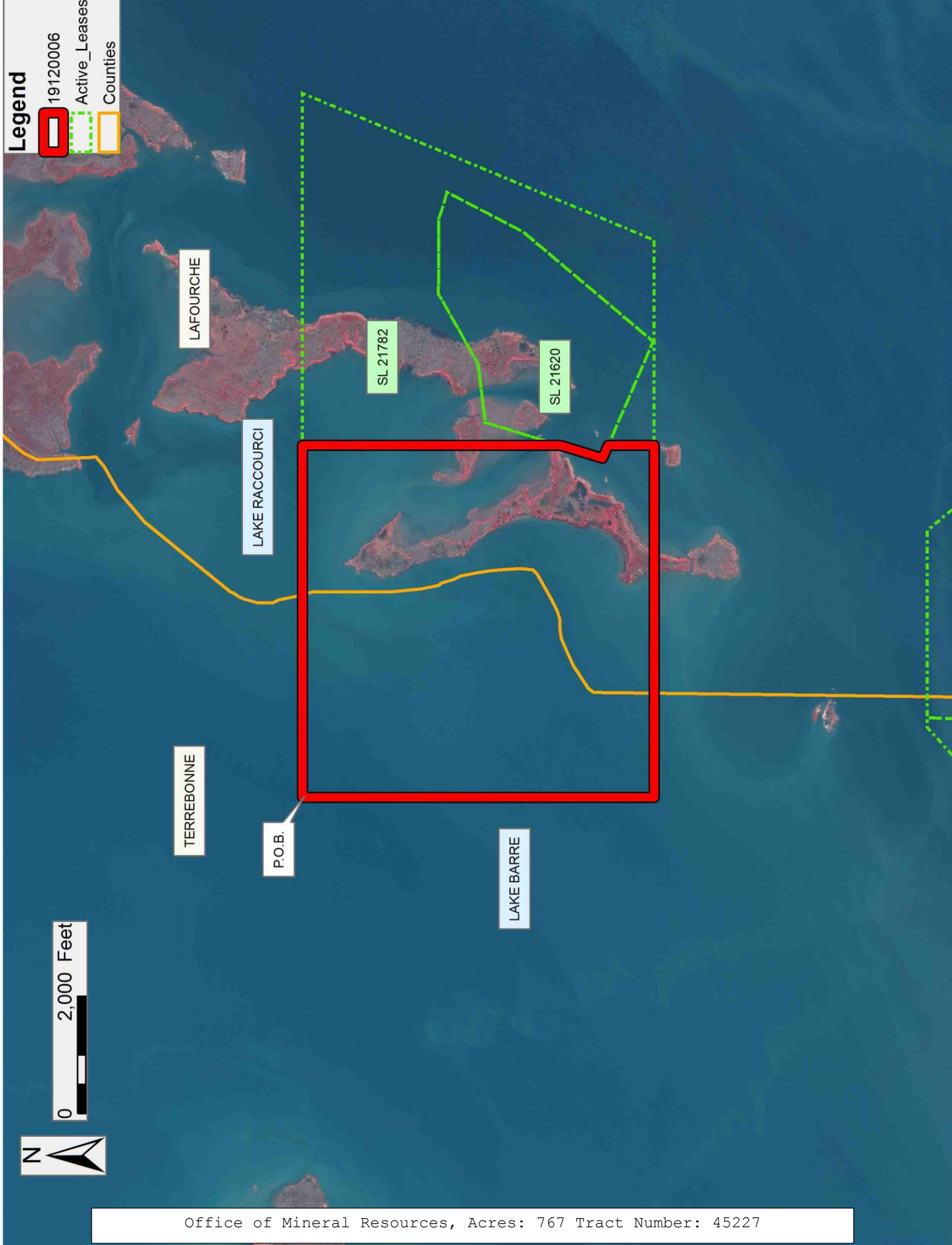
lease by the mineral lessee, its agents, successors or assigns, shall not interfere with nor hinder the reasonable surface use by the Department of Natural Resources, its Offices or Commissions, as herein above reserved.

Applicant: THEOPHILUS OIL, GAS & LAND SERVICES, LLC

Bidder	Cash Payment	Price/Acre	Rental	Oil	Gas	Other

Legend

- 19120006
- Active_Leases
- Counties



Office of Mineral Resources, Acres: 767 Tract Number: 45227

TRACT 45228 - Lafourche Parish, Louisiana

All of the lands now or formerly constituting the beds and bottoms of all water bodies of every nature and description as to which title is vested in the State of Louisiana, together with all islands arising therein and other lands formed by accretion or by reliction, where allowed by law, excepting tax adjudicated lands, and not presently under mineral lease on December 11, 2019, situated in Lafourche Parish, Louisiana, and more particularly described as follows: Beginning at the Northeast corner of State Lease No. 21782 having Coordinates of X = 2,304,919.15 and Y = 214,619.51; thence East 6,000.00 feet to a point having Coordinates of X = 2,310,919.15 and Y = 214,619.51; thence South 5,999.99 feet to a point having Coordinates of X = 2,310,919.15 and Y = 208,619.52; thence West 8,500.00 feet to the Southeast corner of said State Lease No. 21782 having Coordinates of X = 2,302,419.15 and Y = 208,619.52; thence North 22 degrees 37 minutes 12 seconds East 6,500.00 feet along the Eastern boundary of said State Lease No. 21782 to the point of beginning, containing approximately **998.62 acres**, all as more particularly outlined on a plat on file in the Office of Mineral Resources, Department of Natural Resources. All bearings, distances and coordinates are based on Louisiana Coordinate System of 1927, (North or South Zone), where applicable.

NOTE: The above description of the Tract nominated for lease has been provided and corrected, where required, exclusively by the nomination party. Any mineral lease selected from this Tract and awarded by the Louisiana State Mineral and Energy Board shall be without warranty of any kind, either express, implied, or statutory, including, but not limited to, the implied warranties of merchantability and fitness for a particular purpose. Should the mineral lease awarded by the Louisiana State Mineral and Energy Board be subsequently modified, cancelled or abrogated due to the existence of conflicting leases, operating agreements, private claims or other future obligations or conditions which may affect all or any portion of the leased Tract, it shall not relieve the Lessee of the obligation to pay any bonus due thereon to the Louisiana State Mineral and Energy Board, nor shall the Louisiana State Mineral and Energy Board be obligated to refund any consideration paid by the Lessor prior to such modification, cancellation, or abrogation, including, but not limited to, bonuses, rentals and royalties.

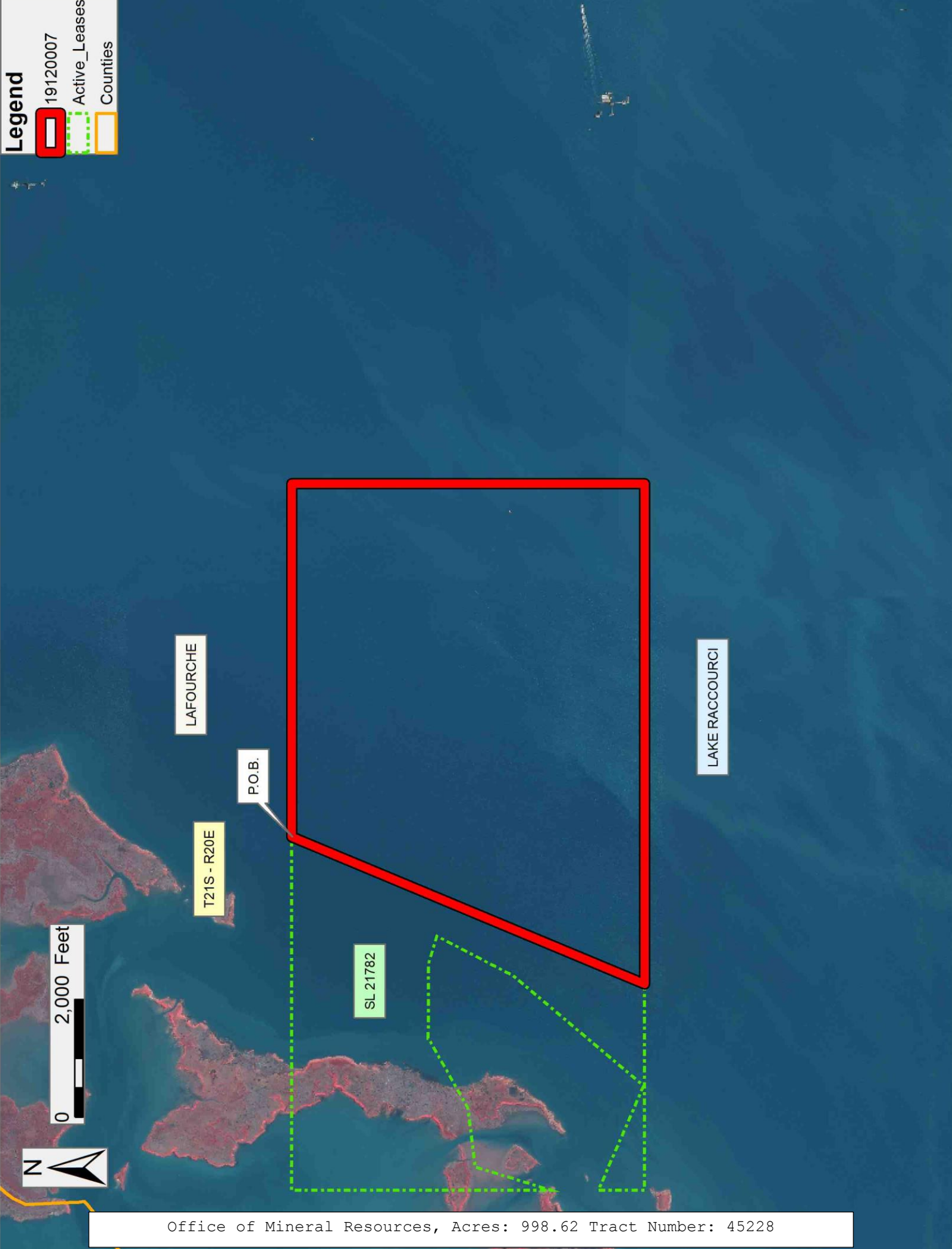
NOTE: The State of Louisiana does hereby reserve, and this lease shall be subject to, the imprescriptible right of surface use in the nature of a servitude in favor of the Department of Natural Resources, including its Offices and Commissions, for the sole purpose of implementing, constructing, servicing and maintaining approved coastal zone management and/or restoration projects. Utilization of any and all rights derived under this lease by the mineral lessee, its agents, successors or assigns, shall not interfere with nor hinder the reasonable surface use by the Department of Natural Resources, its Offices or Commissions, as herein above reserved.

Applicant: THEOPHILUS OIL, GAS & LAND SERVICES, LLC

Bidder	Cash Payment	Price/Acre	Rental	Oil	Gas	Other

Legend

- 19120007
- Active_Leases
- Counties



Office of Mineral Resources, Acres: 998.62 Tract Number: 45228

TRACT 45229 - Lafourche Parish, Louisiana

All of the lands now or formerly constituting the beds and bottoms of all water bodies of every nature and description as to which title is vested in the State of Louisiana, together with all islands arising therein and other lands formed by accretion or by reliction, where allowed by law, excepting tax adjudicated lands, and not presently under mineral lease on December 11, 2019, situated in Lafourche Parish, Louisiana, and more particularly described as follows: Beginning at a point having Coordinates of X = 2,310,919.15 and Y = 213,619.51; thence East 10,000.00 feet to a point having Coordinates of X = 2,320,919.15 and Y = 213,619.51; thence South 9,695.22 feet to a point on the Northern boundary of State Lease No. 14589, as amended, having Coordinates of X = 2,320,919.15 and Y = 203,924.29; thence West 3,138.67 feet along said Northern boundary of said State Lease No. 14589 to its Northwest corner, also being a point on the boundary of State Lease No. 1480, as amended, having Coordinates of X = 2,317,780.48 and Y = 203,924.29; thence along the boundary of said State Lease No. 1480 the following courses and distances: North 00 degrees 29 minutes 40 seconds West 899.05 feet to a point having Coordinates of X = 2,317,772.72 and Y = 204,823.31, South 27 degrees 49 minutes 00 seconds West 456.13 feet to a point having Coordinates of X = 2,317,559.87 and Y = 204,419.89, South 33 degrees 23 minutes 21 seconds West 527.00 feet to a point having Coordinates of X = 2,317,269.85 and Y = 203,979.87, South 41 degrees 59 minutes 14 seconds West 403.60 feet to a point having Coordinates of X = 2,316,999.86 and Y = 203,679.88, and South 43 degrees 13 minutes 40 seconds West 82.85 feet to a point having Coordinates of X = 2,316,943.11 and Y = 203,619.51; thence West 6,023.96 feet to a point having Coordinates of X = 2,310,919.15 and Y = 203,619.51; thence North 10,000.00 feet to the point of beginning, containing approximately **2,263.49 acres**, all as more particularly outlined on a plat on file in the Office of Mineral Resources, Department of Natural Resources. All bearings, distances and coordinates are based on Louisiana Coordinate System of 1927, (North or South Zone), where applicable.

NOTE: The above description of the Tract nominated for lease has been provided and corrected, where required, exclusively by the nomination party. Any mineral lease selected from this Tract and awarded by the Louisiana State Mineral and Energy Board shall be without warranty of any kind, either express, implied, or statutory, including, but not limited to, the implied warranties of merchantability and fitness for a particular purpose. Should the mineral lease awarded by the Louisiana State Mineral and Energy Board be subsequently modified, cancelled or abrogated due to the existence of conflicting leases, operating agreements, private claims or other future obligations or conditions which may affect all or any portion of the leased Tract, it shall not relieve the Lessee of the obligation to pay any bonus due thereon to the Louisiana State Mineral and Energy Board, nor shall the Louisiana State Mineral and Energy Board be obligated to refund any consideration paid by the Lessor prior to such modification, cancellation, or abrogation, including, but not limited to, bonuses, rentals and royalties.

NOTE: The State of Louisiana does hereby reserve, and this lease shall be subject to, the imprescriptible right of surface use in the nature of a servitude in favor of the Department of Natural Resources, including its Offices and Commissions, for the sole purpose of implementing, constructing, servicing and maintaining approved coastal zone management and/or restoration projects. Utilization of any and all rights derived under this lease by the mineral lessee, its agents, successors or assigns, shall not interfere with nor hinder the reasonable surface use by the Department of Natural Resources, its Offices or Commissions, as herein above reserved.

Applicant: THEOPHILUS OIL, GAS & LAND SERVICES, LLC

Bidder	Cash Payment	Price/Acre	Rental	Oil	Gas	Other

Legend

- 19120011
- Active_Leases

0 2,000 Feet



LAFOURCHE

P.O.B.

LAKE RACCOURCI

TIMBALIER BAY

SL 14589

SL 1480