

TRACT 45047 - Terrebonne Parish, Louisiana

All of the lands now or formerly constituting the beds and bottoms of all water bodies of every nature and description as to which title is vested in the State of Louisiana, together with all islands arising therein and other lands formed by accretion or by reliction, where allowed by law, excepting tax adjudicated lands, and not presently under mineral lease on December 12, 2018, situated in Terrebonne Parish, Louisiana, and more particularly described as follows: Beginning at a point having Coordinates of X = 2,227,143.59 and Y = 254,350.00; thence West 9,165.59 feet to a point having Coordinates of X = 2,217,978.00 and Y = 254,350.00; thence North 11 degrees 15 minutes 03 seconds East 7,216.69 feet to a point having Coordinates of X = 2,219,386.00 and Y = 261,428.00; thence East 7,757.59 feet to a point having Coordinates of X = 2,227,143.59 and Y = 261,428.00; thence South 7,078.00 feet to the to the point of beginning, containing approximately **74 acres**, all as more particularly outlined on a plat on file in the Office of Mineral Resources, Department of Natural Resources. All bearings, distances and coordinates are based on Louisiana Coordinate System of 1927, (North or South Zone), where applicable.

NOTE: The above description of the Tract nominated for lease has been provided and corrected, where required, exclusively by the nomination party. Any mineral lease selected from this Tract and awarded by the Louisiana State Mineral and Energy Board shall be without warranty of any kind, either express, implied, or statutory, including, but not limited to, the implied warranties of merchantability and fitness for a particular purpose. Should the mineral lease awarded by the Louisiana State Mineral and Energy Board be subsequently modified, cancelled or abrogated due to the existence of conflicting leases, operating agreements, private claims or other future obligations or conditions which may affect all or any portion of the leased Tract, it shall not relieve the Lessee of the obligation to pay any bonus due thereon to the Louisiana State Mineral and Energy Board, nor shall the Louisiana State Mineral and Energy Board be obligated to refund any consideration paid by the Lessor prior to such modification, cancellation, or abrogation, including, but not limited to, bonuses, rentals and royalties.

NOTE: The State of Louisiana does hereby reserve, and this lease shall be subject to, the imprescriptible right of surface use in the nature of a servitude in favor of the Department of Natural Resources, including its Offices and Commissions, for the sole purpose of implementing, constructing, servicing and maintaining approved coastal zone management and/or restoration projects. Utilization of any and all rights derived under this lease by the mineral lessee, its agents, successors or assigns, shall not interfere with nor hinder the reasonable surface use by the Department of Natural Resources, its Offices or Commissions, as herein above reserved.

Applicant: ROBERT A. SCHROEDER, INC.

Bidder	Cash Payment	Price/ Acre	Rental	Oil	Gas	Other

Legend

181200



BAYOU PETIT CAILLOU

TERREBONNE

T19S - R18E

P.O.B.



T20S - R18E

LAKE BOUDREAUX



TRACT 45048 - Terrebonne Parish, Louisiana

All of the lands now or formerly constituting the beds and bottoms of all water bodies of every nature and description as to which title is vested in the State of Louisiana, together with all islands arising therein and other lands formed by accretion or by reliction, where allowed by law, excepting tax adjudicated lands, and not presently under mineral lease on December 12, 2018, situated in Terrebonne Parish, Louisiana, and more particularly described as follows: Beginning at a point having Coordinates of X = 2,227,143.59 and Y = 254,350.00; thence North 7,078.00 feet to a point having Coordinates of X = 2,227,143.59 and Y = 261,428.00; thence East 9,072.44 feet to a point having Coordinates of X = 2,236,216.02 and Y = 261,428.00; thence South 7,078.00 feet to a point having Coordinates of X = 2,236,216.02 and Y = 254,350.00; thence West 9,072.44 feet to the to the point of beginning, containing approximately **80 acres**, all as more particularly outlined on a plat on file in the Office of Mineral Resources, Department of Natural Resources. All bearings, distances and coordinates are based on Louisiana Coordinate System of 1927, (North or South Zone), where applicable.

NOTE: The above description of the Tract nominated for lease has been provided and corrected, where required, exclusively by the nomination party. Any mineral lease selected from this Tract and awarded by the Louisiana State Mineral and Energy Board shall be without warranty of any kind, either express, implied, or statutory, including, but not limited to, the implied warranties of merchantability and fitness for a particular purpose. Should the mineral lease awarded by the Louisiana State Mineral and Energy Board be subsequently modified, cancelled or abrogated due to the existence of conflicting leases, operating agreements, private claims or other future obligations or conditions which may affect all or any portion of the leased Tract, it shall not relieve the Lessee of the obligation to pay any bonus due thereon to the Louisiana State Mineral and Energy Board, nor shall the Louisiana State Mineral and Energy Board be obligated to refund any consideration paid by the Lessor prior to such modification, cancellation, or abrogation, including, but not limited to, bonuses, rentals and royalties.

NOTE: The State of Louisiana does hereby reserve, and this lease shall be subject to, the imprescriptible right of surface use in the nature of a servitude in favor of the Department of Natural Resources, including its Offices and Commissions, for the sole purpose of implementing, constructing, servicing and maintaining approved coastal zone management and/or restoration projects. Utilization of any and all rights derived under this lease by the mineral lessee, its agents, successors or assigns, shall not interfere with nor hinder the reasonable surface use by the Department of Natural Resources, its Offices or Commissions, as herein above reserved.

Applicant: ROBERT A. SCHROEDER, INC.

Bidder	Cash Payment	Price/Acre	Rental	Oil	Gas	Other



TRACT 45049 - Terrebonne Parish, Louisiana

All of the lands now or formerly constituting the beds and bottoms of all water bodies of every nature and description as to which title is vested in the State of Louisiana, together with all islands arising therein and other lands formed by accretion or by reliction, where allowed by law, excepting tax adjudicated lands, and not presently under mineral lease on December 12, 2018, situated in Terrebonne Parish, Louisiana, and more particularly described as follows: Beginning at a point having Coordinates of X = 2,226,985.55 and Y = 246,939.17, said point being on the eastern boundary of said State Lease No. 20162, as amended; thence South 01 degrees 04 minutes 16 seconds West 517.35 feet to a point having Coordinates of X = 2,226,975.88 and Y = 246,421.91, said point on the northern boundary of State Lease No. 21744; thence along said northern boundary of said State Lease No. 21744 the following courses: North 81 degrees 31 minutes 10 seconds West 2,028.05 feet to a point having Coordinates of X = 2,224,970.00 and Y = 246,721.00, and South 78 degrees 56 minutes 28 seconds West 4,274.54 feet to a point having Coordinates of X = 2,220,774.83 and Y = 245,901.07, said point being the northwest corner of said State Lease No. 21744; thence North 53 degrees 11 minutes 23 seconds West 5,311.12 feet to a point having Coordinates of X = 2,216,522.62 and Y = 249,083.32, said point being on the eastern boundary of said State Lease No. 21662, as amended; thence North 15 degrees 26 minutes 51 seconds East 5,464.07 feet to a point having Coordinates of X = 2,217,978.00 and Y = 254,350.00; thence East 9,165.59 feet to a point having Coordinates of X = 2,227,143.59 and Y = 254,350.00; thence South 00 degrees 05 minutes 05 seconds East 7,309.06 feet to a point having Coordinates of X = 2,227,154.40 and Y = 247,040.95, said point being on the said eastern boundary of said State Lease No. 20162, as amended; thence along the eastern and northern western boundaries of said State Lease No. 20162, as amended, the following courses and distances: North 30 degrees 33 minutes 40 seconds West 329.86 feet, North 33 degrees 53 minutes 47 seconds West 75.53 feet, North 40 degrees 20 minutes 03 seconds West 90.75 feet, North 46 degrees 24 minutes 57 seconds West 122.19 feet, North 50 degrees 39 minutes 15 seconds West 123.15 feet, North 53 degrees 04 minutes 56 seconds West 127.09 feet, North 56 degrees 21 minutes 23 seconds West 157.29 feet, North 62 degrees 11 minutes 10 seconds West 268.86 feet, North 65 degrees 34 minutes 58 seconds West 169.55 feet, North 64 degrees 43 minutes 31 seconds West 128.30 feet, North 64 degrees 01 minutes 32 seconds West 86.79 feet, North 54 degrees 15 minutes 20 seconds West 42.86 feet, North 43 degrees 05 minutes 42 seconds West 52.33 feet, North 37 degrees 21 minutes 54 seconds West 121.03 feet, North 34 degrees 53 minutes 24 seconds West 120.52 feet, North 35 degrees 22 minutes 58 seconds West 197.91 feet, North 35 degrees 23 minutes 55 seconds West 224.27 feet, North 36 degrees 14 minutes 42 seconds West 228.66 feet, North 37 degrees 44 minutes 51 seconds West 268.07 feet, and North 39 degrees 07 minutes 28 seconds West 185.61 feet to a point being the eastern boundary of said State Lease No. 19570, as amended; thence along the eastern, northern, western and southern boundaries of said State Lease No. 19570, as amended, the following courses and distances: North 41 degrees 20 minutes 39 seconds West 206.27 feet, North 42 degrees 56 minutes 29 seconds West 103.70 feet, West 1,977.21 feet, South 01 degrees 50 minutes 03 seconds East 26.72

feet, South 37 degrees 53 minutes 37 seconds West 18.92 feet, South 61 degrees 19 minutes 20 seconds West 47.55 feet, South 68 degrees 39 minutes 22 seconds West 100.45 feet, South 77 degrees 01 minutes 06 seconds West 79.46 feet, South 80 degrees 15 minutes 15 seconds West 77.45 feet, South 86 degrees 05 minutes 47 seconds West 71.98 feet, North 87 degrees 10 minutes 46 seconds West 64.22 feet, North 81 degrees 51 minutes 53 seconds West 47.77 feet, North 78 degrees 13 minutes 37 seconds West 59.94 feet, North 73 degrees 40 minutes 53 seconds West 54.20 feet, North 68 degrees 40 minutes 54 seconds West 54.63 feet, North 63 degrees 32 minutes 33 seconds West 50.01 feet, North 59 degrees 24 minutes 36 seconds West 88.37 feet, North 57 degrees 26 minutes 19 seconds West 23.02 feet, West 164.17 feet, South 408.62 feet, South 61 degrees 56 minutes 17 seconds East 91.68 feet, South 66 degrees 47 minutes 48 seconds East 93.88 feet, South 71 degrees 23 minutes 39 seconds East 56.17 feet, and South 75 degrees 40 minutes 49 seconds East 577.76 feet to a point being on said northern boundary of said State Lease No. 20162, as amended; thence along the northern, western and southern boundaries of said State Lease No. 20162, as amended, the following courses and distances: South 67 degrees 00 minutes 46 seconds West 81.84 feet, South 73 degrees 42 minutes 25 seconds West 53.89 feet, South 86 degrees 51 minutes 43 seconds West 87.32 feet, North 86 degrees 03 minutes 23 seconds West 134.21 feet, North 89 degrees 20 minutes 34 seconds West 147.34 feet, North 85 degrees 24 minutes 15 seconds West 96.97 feet, North 79 degrees 16 minutes 15 seconds West 136.36 feet, North 74 degrees 27 minutes 07 seconds West 56.15 feet, South 142.62 feet, South 64 degrees 11 minutes 33 seconds East 40.63 feet, South 66 degrees 16 minutes 41 seconds East 69.15 feet, South 66 degrees 10 minutes 01 seconds East 104.25 feet, South 70 degrees 41 minutes 46 seconds East 87.79 feet, South 74 degrees 27 minutes 22 seconds East 109.15 feet, South 78 degrees 40 minutes 41 seconds East 65.35 feet, South 81 degrees 26 minutes 20 seconds East 32.71 feet, South 83 degrees 25 minutes 56 seconds East 226.62 feet, South 82 degrees 13 minutes 47 seconds East 297.63 feet, South 79 degrees 58 minutes 07 seconds East 581.73 feet, South 80 degrees 05 minutes 31 seconds East 412.75 feet, South 77 degrees 55 minutes 15 seconds East 63.70 feet, South 72 degrees 40 minutes 13 seconds East 127.71 feet, South 66 degrees 53 minutes 12 seconds East 153.38 feet, South 64 degrees 31 minutes 48 seconds East 379.59 feet, South 56 degrees 19 minutes 40 seconds East 89.45 feet, South 51 degrees 38 minutes 17 seconds East 91.94 feet, South 49 degrees 09 minutes 24 seconds East 137.65 feet, South 47 degrees 18 minutes 08 seconds East 202.26 feet, South 46 degrees 20 minutes 14 seconds East 192.71 feet, South 45 degrees 59 minutes 19 seconds East 256.95 feet, South 46 degrees 04 minutes 31 seconds East 128.48 feet, South 46 degrees 26 minutes 30 seconds East 55.27 feet, and South 80 degrees 11 minutes 57 seconds East 1,625.66 feet to the to the point of beginning, containing approximately **39 acres**, all as more particularly outlined on a plat on file in the Office of Mineral Resources, Department of Natural Resources. All bearings, distances and coordinates are based on Louisiana Coordinate System of 1927, (North or South Zone), where applicable.

NOTE: The above description of the Tract nominated for lease has been provided and corrected, where required, exclusively by the nomination party.

Any mineral lease selected from this Tract and awarded by the Louisiana State Mineral and Energy Board shall be without warranty of any kind, either express, implied, or statutory, including, but not limited to, the implied warranties of merchantability and fitness for a particular purpose. Should the mineral lease awarded by the Louisiana State Mineral and Energy Board be subsequently modified, cancelled or abrogated due to the existence of conflicting leases, operating agreements, private claims or other future obligations or conditions which may affect all or any portion of the leased Tract, it shall not relieve the Lessee of the obligation to pay any bonus due thereon to the Louisiana State Mineral and Energy Board, nor shall the Louisiana State Mineral and Energy Board be obligated to refund any consideration paid by the Lessor prior to such modification, cancellation, or abrogation, including, but not limited to, bonuses, rentals and royalties.

NOTE: The State of Louisiana does hereby reserve, and this lease shall be subject to, the imprescriptible right of surface use in the nature of a servitude in favor of the Department of Natural Resources, including its Offices and Commissions, for the sole purpose of implementing, constructing, servicing and maintaining approved coastal zone management and/or restoration projects. Utilization of any and all rights derived under this lease by the mineral lessee, its agents, successors or assigns, shall not interfere with nor hinder the reasonable surface use by the Department of Natural Resources, its Offices or Commissions, as herein above reserved.

Applicant: ROBERT A. SCHROEDER, INC.

Bidder	Cash Payment	Price/Acre	Rental	Oil	Gas	Other

Legend

- 18120011
- Active_Leas
- Counties



Office of Mineral Resources, Acres: 39 Tract Number: 45049

TRACT 45050 - Terrebonne Parish, Louisiana

All of the lands now or formerly constituting the beds and bottoms of all water bodies of every nature and description as to which title is vested in the State of Louisiana, together with all islands arising therein and other lands formed by accretion or by reliction, where allowed by law, excepting tax adjudicated lands, and not presently under mineral lease on December 12, 2018, situated in Terrebonne Parish, Louisiana, and more particularly described as follows: Beginning at a point having Coordinates of X = 2,226,985.55 and Y = 246,939.17, said point being on the eastern boundary of State Lease No. 20162, as amended; thence along said eastern boundary of said State Lease No. 20162, as amended, the following courses: North 13 degrees 25 minutes 03 seconds West 104.64 feet to a point having Coordinates of X = 2,226,961.27 and Y = 247,040.95, and East 193.13 feet to a point having Coordinates of X = 2,227,154.40 and Y = 247,040.95; thence North 00 degrees 05 minutes 05 seconds West 7,309.06 feet to a point having Coordinates of X = 2,227,143.59 and Y = 254,350.00; thence East 9,072.44 feet to a point having Coordinates of X = 2,236,216.02 and Y = 254,350.00; thence South 9,305.83 feet to a point having Coordinates of X = 2,236,216.02 and Y = 245,044.17; thence North 81 degrees 31 minutes 10 seconds West 6,400.00 feet to a point having Coordinates of X = 2,229,886.00 and Y = 245,988.00, said point being northeast corner of said State Lease No. 21744; thence North 81 degrees 31 minutes 10 seconds West 2,942.29 feet along the northern boundary of said State Lease No. 21744 to a point having Coordinates of X = 2,226,975.88 and Y = 246,421.91; thence North 01 degrees 04 minutes 16 seconds East 517.35 feet to the point of beginning, containing approximately **82 acres**, all as more particularly outlined on a plat on file in the Office of Mineral Resources, Department of Natural Resources. All bearings, distances and coordinates are based on Louisiana Coordinate System of 1927, (North or South Zone), where applicable.

NOTE: The above description of the Tract nominated for lease has been provided and corrected, where required, exclusively by the nomination party. Any mineral lease selected from this Tract and awarded by the Louisiana State Mineral and Energy Board shall be without warranty of any kind, either express, implied, or statutory, including, but not limited to, the implied warranties of merchantability and fitness for a particular purpose. Should the mineral lease awarded by the Louisiana State Mineral and Energy Board be subsequently modified, cancelled or abrogated due to the existence of conflicting leases, operating agreements, private claims or other future obligations or conditions which may affect all or any portion of the leased Tract, it shall not relieve the Lessee of the obligation to pay any bonus due thereon to the Louisiana State Mineral and Energy Board, nor shall the Louisiana State Mineral and Energy Board be obligated to refund any consideration paid by the Lessor prior to such modification, cancellation, or abrogation, including, but not limited to, bonuses, rentals and royalties.

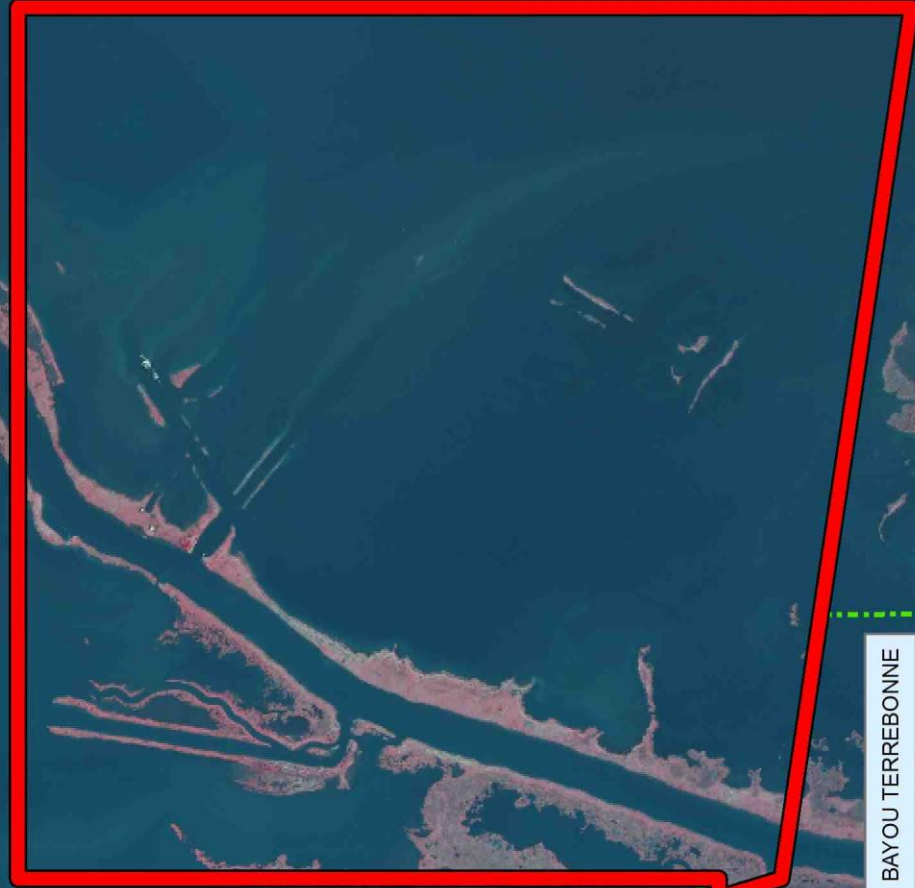
NOTE: The State of Louisiana does hereby reserve, and this lease shall be subject to, the imprescriptible right of surface use in the nature of a servitude in favor of the Department of Natural Resources, including its

Offices and Commissions, for the sole purpose of implementing, constructing, servicing and maintaining approved coastal zone management and/or restoration projects. Utilization of any and all rights derived under this lease by the mineral lessee, its agents, successors or assigns, shall not interfere with nor hinder the reasonable surface use by the Department of Natural Resources, its Offices or Commissions, as herein above reserved.

Applicant: ROBERT A. SCHROEDER, INC.

Bidder	Cash Payment	Price/Acre	Rental	Oil	Gas	Other

Legend
18120014
Active_Leas



BAYOU LACACHE

TERREBONNE

T20S - R18E

BAYOU TERREBONNE

SL 20162

P.O.B.

SL 21744

Office of Mineral Resources, Acres: 82 Tract Number: 45050

TRACT 45051 - Portion of Blocks 40, 41, 46, and 47, Ship Shoal Area, Terrebonne Parish, Louisiana

The beds and bottoms of all water bodies belonging to the State of Louisiana located in Blocks 40, 41, 46, and 47, Ship Shoal Area, together with any present lands formed by accretion to the shoreline or islands formed therein, located in Terrebonne Parish, Louisiana, owned by and not presently under mineral lease as of December 12, 2018, from the State of Louisiana, the geographical area of which is more fully described as follows: Beginning at a point within Block 40, Ship Shoal Area, having Coordinates X = 2,132,119.00 and Y = 143,915.00; thence East 8,281.00 feet to a point having Coordinates of X = 2,140,400.00 and Y = 143,915.00, said point being on the line common to Blocks 40 and 41, Ship Shoal Area; thence East 6,089.00 feet to a point having Coordinates of X = 2,146,489.00 and Y = 143,915.00; thence South 2,361.47 feet to a point having Coordinates of X = 2,146,489.00 and Y = 141,553.53, said point being on the line common to Blocks 41 and 46, Ship Shoal Area; thence South 5,052.46 feet to a point on the Louisiana Coastline, as decreed by the Supreme Court of the United States, as determined by a Special Master appointed therein, in litigation styled *United States v. State of Louisiana et al No. 9 Original*, in 1975, having Coordinates of X = 2,146,489.00 and Y = 136,501.07; thence along said Louisiana Coastline the following: Southwesterly along a straight line to a point having Coordinates of X = 2,143,589 and Y = 136,276, Westerly along a straight line to a point having Coordinates of X = 2,143,529 and Y = 136,276, Northwesterly along a straight line to a point having Coordinates of X = 2,138,231 and Y = 136,387, Northwesterly along a straight line to a point having Coordinates of X = 2,134,210 and Y = 136,726, Northwesterly along a straight line to a point having Coordinates of X = 2,133,089 and Y = 136,940, and Northwesterly along a straight line to a point having Coordinates of X = 2,132,119.00 and Y = 137,338.45; thence North 4,215.08 feet to a point having Coordinates of X = 2,132,119.00 and Y = 141,553.53, said point being on the line common to Blocks 40 and 47, Ship Shoal Area; thence North 2,361.47 feet to the point of beginning, **LESS AND EXCEPT** any portion of the Isles Dernieres Barrier Islands Refuge that lies within the above described tract, containing approximately **2,419 acres**, all as more particularly outlined on a plat on file in the Office of Mineral Resources, Department of Natural Resources. All bearings, distances and coordinates are based on Louisiana Coordinate System of 1927, (North or South Zone).

NOTE: The above description of the Tract nominated for lease has been provided and corrected, where required, exclusively by the nomination party. Any mineral lease selected from this Tract and awarded by the Louisiana State Mineral and Energy Board shall be without warranty of any kind, either express, implied, or statutory, including, but not limited to, the implied warranties of merchantability and fitness for a particular purpose. Should the mineral lease awarded by the Louisiana State Mineral and Energy Board be subsequently modified, cancelled or abrogated due to the existence of conflicting leases, operating agreements, private claims or other future obligations or conditions which may affect all or any portion of the leased Tract, it shall not relieve the Lessee of the obligation to pay any bonus

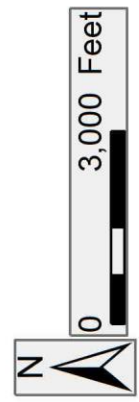
due thereon to the Louisiana State Mineral and Energy Board, nor shall the Louisiana State Mineral and Energy Board be obligated to refund any consideration paid by the Lessor prior to such modification, cancellation, or abrogation, including, but not limited to, bonuses, rentals and royalties.

NOTE: The State of Louisiana does hereby reserve, and this lease shall be subject to, the imprescriptible right of surface use in the nature of a servitude in favor of the Department of Natural Resources, including its Offices and Commissions, for the sole purpose of implementing, constructing, servicing and maintaining approved coastal zone management and/or restoration projects. Utilization of any and all rights derived under this lease by the mineral lessee, its agents, successors or assigns, shall not interfere with nor hinder the reasonable surface use by the Department of Natural Resources, its Offices or Commissions, as herein above reserved.

Applicant: ROBERT A. SCHROEDER, INC.

Bidder	Cash Payment	Price/Acre	Rental	Oil	Gas	Other

Legend
181200
Wildlife
Blocks

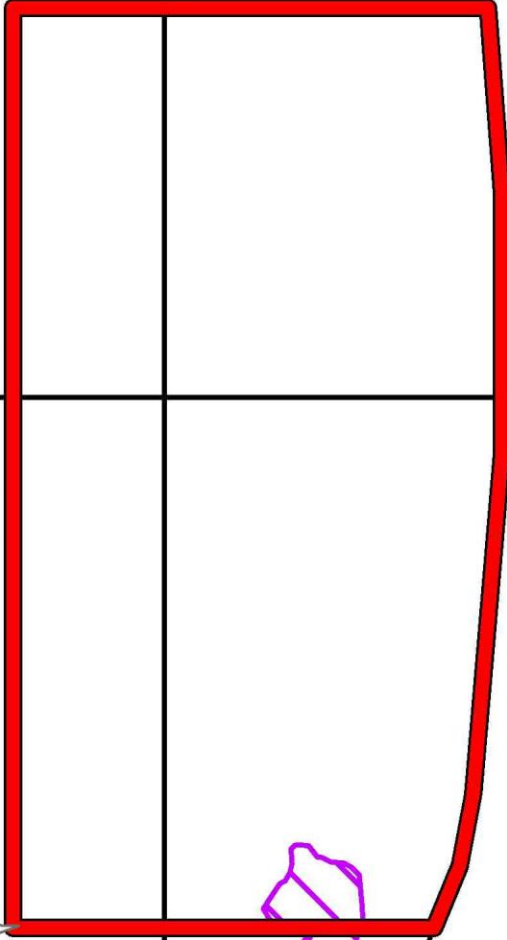


TERREBONNE

SS0040

SS0041

P.O.B.

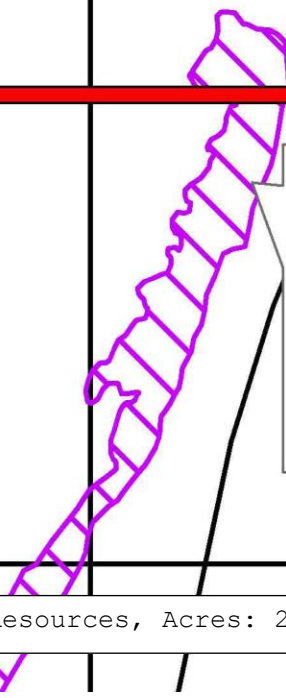


GULF OF MEXICO

SHIP SHOAL AREA

SS0047

SS0046



ISLES DERNIERES BARRIER ISLANDS REFUGE

Office of Mineral Resources, Acres: 2419 Tract Number: 45051

TRACT 45052 - Portion of Blocks 39, 40, 47, and 48, Ship Shoal Area, Terrebonne Parish, Louisiana

The beds and bottoms of all water bodies belonging to the State of Louisiana located in Blocks 39, 40, 47, and 48, Ship Shoal Area, together with any present lands formed by accretion to the shoreline or islands formed therein, located in Terrebonne Parish, Louisiana, owned by and not presently under mineral lease as of December 12, 2018, from the State of Louisiana, the geographical area of which is more fully described as follows: Beginning at a point within Block 40, Ship Shoal Area, having Coordinates of X = 2,132,119.00 and Y = 143,915.00; thence South 2,361.47 feet to a point being on the common line of Blocks 40 and 47, Ship Shoal Area, having Coordinates of X = 2,132,119.00 and Y = 141,553.53; thence South 4,215.08 feet to a point on the Louisiana Coastline, as decreed by the Supreme Court of the United States, as determined by a Special Master appointed therein, in litigation styled *United States v. State of Louisiana et al No. 9 Original*, in 1975, having Coordinates of X = 2,132,119.00 and Y = 137,338.45; thence along said Louisiana Coastline the following: Northwesterly along a straight line to a point having Coordinates of X = 2,128,819 and Y = 138,694, Northwesterly along a straight line to a point having Coordinates of X = 2,126,697 and Y = 139,353, Northwesterly along a straight line to a point having Coordinates of X = 2,122,523 and Y = 140,238, Northwesterly along a straight line to a point having Coordinates of X = 2,118,829 and Y = 141,971, Northwesterly along a straight line to a point having Coordinates of X = 2,118,065 and Y = 142,532, Northwesterly along a straight line to a point having Coordinates of X = 2,117,317 and Y = 143,491, Northeasterly along a straight line to a point having Coordinates of X = 2,117,362 and Y = 143,583, and Northeasterly along a straight line to a point having Coordinates of X = 2,117,771.87 and Y = 143,915.00; thence East 7,028.14 feet to a point being on the common line of 39 and 40, Ship Shoal Area, having Coordinates of X = 2,124,800.00 and Y = 143,915.00; thence East 7,319.00 feet to the to the point of beginning, **LESS AND EXCEPT** any portion of the Isles Dernieres Barrier Islands Refuge that lies within the above described tract, containing approximately **1,160 acres**, all as more particularly outlined on a plat on file in the Office of Mineral Resources, Department of Natural Resources. All bearings, distances and coordinates are based on Louisiana Coordinate System of 1927, (North or South Zone).

NOTE: The above description of the Tract nominated for lease has been provided and corrected, where required, exclusively by the nomination party. Any mineral lease selected from this Tract and awarded by the Louisiana State Mineral and Energy Board shall be without warranty of any kind, either express, implied, or statutory, including, but not limited to, the implied warranties of merchantability and fitness for a particular purpose. Should the mineral lease awarded by the Louisiana State Mineral and Energy Board be subsequently modified, cancelled or abrogated due to the existence of conflicting leases, operating agreements, private claims or other future obligations or conditions which may affect all or any portion of the leased Tract, it shall not relieve the Lessee of the obligation to pay any bonus due thereon to the Louisiana State Mineral and Energy Board, nor shall the

Louisiana State Mineral and Energy Board be obligated to refund any consideration paid by the Lessor prior to such modification, cancellation, or abrogation, including, but not limited to, bonuses, rentals and royalties.

NOTE: The State of Louisiana does hereby reserve, and this lease shall be subject to, the imprescriptible right of surface use in the nature of a servitude in favor of the Department of Natural Resources, including its Offices and Commissions, for the sole purpose of implementing, constructing, servicing and maintaining approved coastal zone management and/or restoration projects. Utilization of any and all rights derived under this lease by the mineral lessee, its agents, successors or assigns, shall not interfere with nor hinder the reasonable surface use by the Department of Natural Resources, its Offices or Commissions, as herein above reserved.

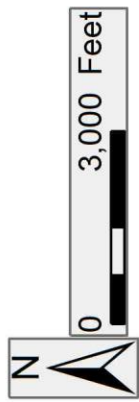
NOTE: It appears, according to our records, that a portion of this Tract is located within the restrictive safety fairway area as set out by the Corps of Engineers, U.S. Army and/or the restrictive anchorage area as set out by the U.S. Coast Guard.

Applicant: ROBERT A. SCHROEDER, INC.

Bidder	Cash Payment	Price/Acre	Rental	Oil	Gas	Other

Legend

- 181200 
- Wildlife 
- Blocks 



TERREBONNE

SS0040

SS0039

P.O.B.

SHIP SHOAL AREA

GULF OF MEXICO

SS0048

SS0047

ISLES DERNIERES BARRIER ISLANDS REFUGE