

**TRACT 45037 - Jefferson and Plaquemines Parishes, Louisiana**

All of the lands now or formerly constituting the beds and bottoms of all water bodies of every nature and description as to which title is vested in the State of Louisiana, together with all islands arising therein and other lands formed by accretion or by reliction, where allowed by law, excepting tax adjudicated lands, and not presently under mineral lease on December 12, 2018, situated in Jefferson and Plaquemines Parishes, Louisiana, and more particularly described as follows: Beginning at the Southwest corner of State Lease No. 3035, as amended having Coordinates of X = 2,439,174.52 and Y = 274,044.39; thence along the boundaries of said State Lease No. 3035, as amended, the following courses: East 3,140.48 feet to a point having Coordinates of X = 2,442,315.00 and Y = 274,044.39, South 620.74 feet to a point having Coordinates of X = 2,442,315.00 and Y = 273,423.65, North 89 degrees 18 minutes 07 seconds East 2,987.32 feet to a point having Coordinates of X = 2,445,302.10 and Y = 273,460.04, North 30 degrees 27 minutes 47 seconds East 301.59 feet to a point having Coordinates of X = 2,445,455.00 and Y = 273,720.00, North 20 degrees 28 minutes 03 seconds East 757.84 feet to a point having Coordinates of X = 2,445,720.00 and Y = 274,430.00, North 14 degrees 25 minutes 15 seconds East 361.39 feet to a point having Coordinates of X = 2,445,810.00 and Y = 274,780.00, North 08 degrees 30 minutes 16 seconds East 540.95 feet to a point having Coordinates of X = 2,445,890.00 and Y = 275,315.00, North 00 degrees 52 minutes 53 seconds East 325.04 feet to a point having Coordinates of X = 2,445,895.00 and Y = 275,640.00, and North 11 degrees 01 minutes 46 seconds West 327.36 feet to a point having Coordinates of X = 2,445,832.37 and Y = 275,961.31; thence East 2,842.15 feet to a point having Coordinates of X = 2,448,674.52 and Y = 275,961.31; thence South 10,299.55 feet to a point having Coordinates of X = 2,448,674.52 and Y = 265,661.77; thence West 9,500.00 feet to a point having Coordinates of X = 2,439,174.52 and Y = 265,661.77; thence North 8,382.63 feet to the point of beginning, containing approximately **1,911.15 acres**, all as more particularly outlined on a plat on file in the Office of Mineral Resources, Department of Natural Resources. All bearings, distances and coordinates are based on Louisiana Coordinate System of 1927, (North or South Zone), where applicable.

NOTE: The above description of the Tract nominated for lease has been provided and corrected, where required, exclusively by the nomination party. Any mineral lease selected from this Tract and awarded by the Louisiana State Mineral and Energy Board shall be without warranty of any kind, either express, implied, or statutory, including, but not limited to, the implied warranties of merchantability and fitness for a particular purpose. Should the mineral lease awarded by the Louisiana State Mineral and Energy Board be subsequently modified, cancelled or abrogated due to the existence of conflicting leases, operating agreements, private claims or other future obligations or conditions which may affect all or any portion of the leased Tract, it shall not relieve the Lessee of the obligation to pay any bonus due thereon to the Louisiana State Mineral and Energy Board, nor shall the Louisiana State Mineral and Energy Board be obligated to refund any

consideration paid by the Lessor prior to such modification, cancellation, or abrogation, including, but not limited to, bonuses, rentals and royalties.

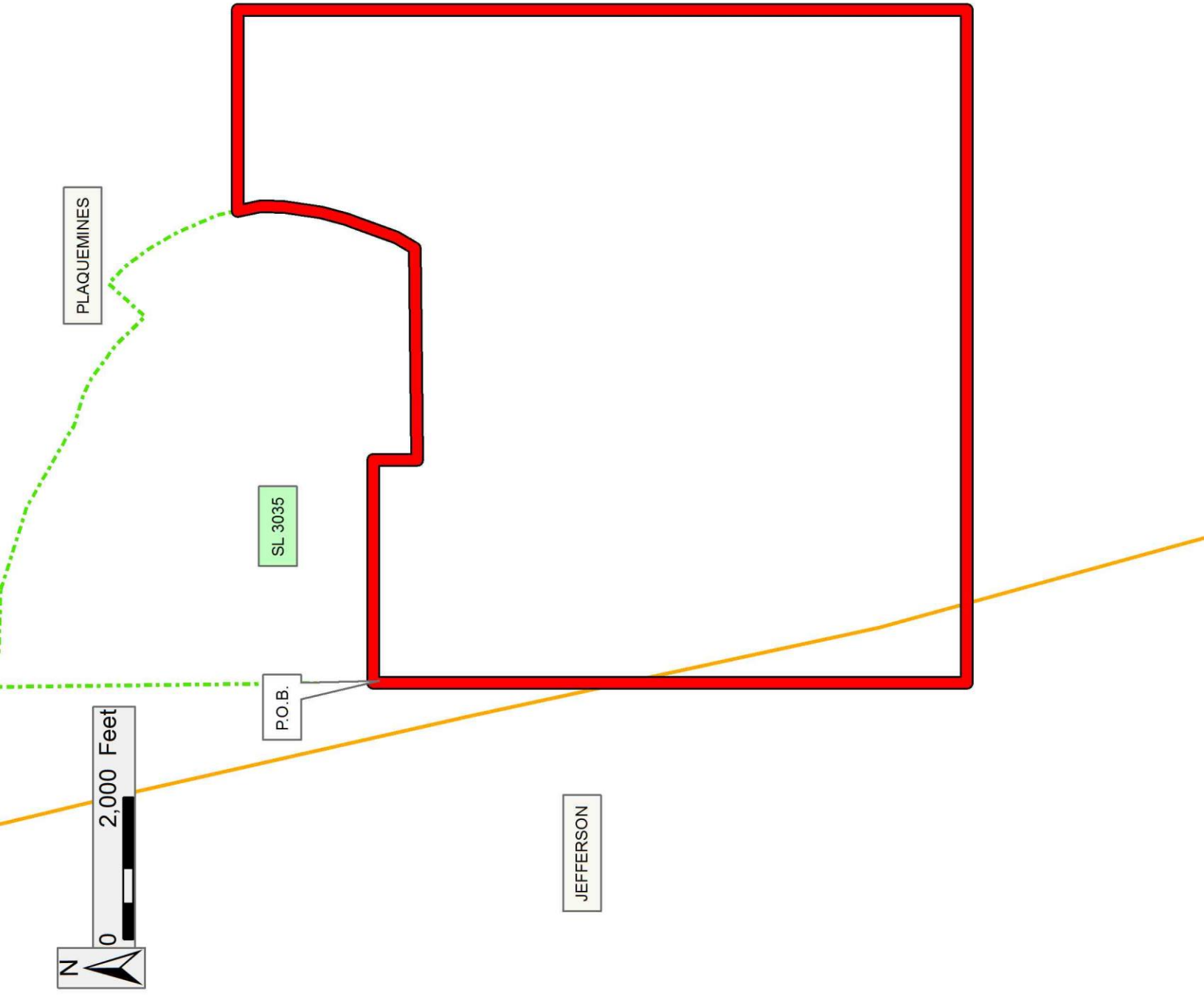
NOTE: The State of Louisiana does hereby reserve, and this lease shall be subject to, the imprescriptible right of surface use in the nature of a servitude in favor of the Department of Natural Resources, including its Offices and Commissions, for the sole purpose of implementing, constructing, servicing and maintaining approved coastal zone management and/or restoration projects. Utilization of any and all rights derived under this lease by the mineral lessee, its agents, successors or assigns, shall not interfere with nor hinder the reasonable surface use by the Department of Natural Resources, its Offices or Commissions, as herein above reserved.

Applicant: CYPRESS ENERGY CORPORATION

Bidder	Cash Payment	Price/Acre	Rental	Oil	Gas	Other

**Legend**

- 18120028
- Active\_Leas
- Counties



Office of Mineral Resources, Acres: 1911.15 Tract Number: 45037

**TRACT 45038 - Plaquemines Parish, Louisiana**

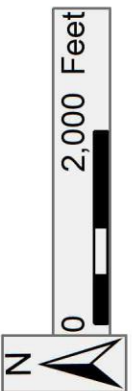
All of the lands now or formerly constituting the beds and bottoms of all water bodies of every nature and description as to which title is vested in the State of Louisiana, together with all islands arising therein and other lands formed by accretion or by reliction, where allowed by law, excepting tax adjudicated lands, and not presently under mineral lease on December 12, 2018, situated in Plaquemines Parish, Louisiana, and more particularly described as follows: Beginning at a point having Coordinates of X = 2,448,674.52 and Y = 275,961.31; thence East 9,500.00 feet to a point having Coordinates of X = 2,458,174.52 and Y = 275,961.31; thence South 10,299.55 feet to a point having Coordinates of X = 2,458,174.52 and Y = 265,661.77; thence West 9,500.00 feet to a point having Coordinates of X = 2,448,674.52 and Y = 265,661.77; thence North 10,299.55 feet to the point of beginning, containing approximately **2,246.23 acres**, all as more particularly outlined on a plat on file in the Office of Mineral Resources, Department of Natural Resources. All bearings, distances and coordinates are based on Louisiana Coordinate System of 1927, (North or South Zone), where applicable.

NOTE: The above description of the Tract nominated for lease has been provided and corrected, where required, exclusively by the nomination party. Any mineral lease selected from this Tract and awarded by the Louisiana State Mineral and Energy Board shall be without warranty of any kind, either express, implied, or statutory, including, but not limited to, the implied warranties of merchantability and fitness for a particular purpose. Should the mineral lease awarded by the Louisiana State Mineral and Energy Board be subsequently modified, cancelled or abrogated due to the existence of conflicting leases, operating agreements, private claims or other future obligations or conditions which may affect all or any portion of the leased Tract, it shall not relieve the Lessee of the obligation to pay any bonus due thereon to the Louisiana State Mineral and Energy Board, nor shall the Louisiana State Mineral and Energy Board be obligated to refund any consideration paid by the Lessor prior to such modification, cancellation, or abrogation, including, but not limited to, bonuses, rentals and royalties.

NOTE: The State of Louisiana does hereby reserve, and this lease shall be subject to, the imprescriptible right of surface use in the nature of a servitude in favor of the Department of Natural Resources, including its Offices and Commissions, for the sole purpose of implementing, constructing, servicing and maintaining approved coastal zone management and/or restoration projects. Utilization of any and all rights derived under this lease by the mineral lessee, its agents, successors or assigns, shall not interfere with nor hinder the reasonable surface use by the Department of Natural Resources, its Offices or Commissions, as herein above reserved.

Applicant: CYPRESS ENERGY CORPORATION

Bidder	Cash Payment	Price/ Acre	Rental	Oil	Gas	Other



PLAQUEMINES

BARATARIA BAY

P.O.B.



**TRACT 45039 - Plaquemines Parish, Louisiana**

All of the lands now or formerly constituting the beds and bottoms of all water bodies of every nature and description as to which title is vested in the State of Louisiana, together with all islands arising therein and other lands formed by accretion or by reliction, where allowed by law, excepting tax adjudicated lands, and not presently under mineral lease on December 12, 2018, situated in Plaquemines Parish, Louisiana, and more particularly described as follows: Beginning at a point having Coordinates of X = 2,458,174.52 and Y = 275,961.31; thence East 9,500.00 feet to a point having Coordinates of X = 2,467,674.52 and Y = 275,961.31; thence South 10,299.55 feet to a point having Coordinates of X = 2,467,674.52 and Y = 265,661.77; thence West 9,500.00 feet to a point having Coordinates of X = 2,458,174.52 and Y = 265,661.77; thence North 10,299.55 feet to the point of beginning, containing approximately **2,246.23 acres**, all as more particularly outlined on a plat on file in the Office of Mineral Resources, Department of Natural Resources. All bearings, distances and coordinates are based on Louisiana Coordinate System of 1927, (North or South Zone), where applicable.

NOTE: The above description of the Tract nominated for lease has been provided and corrected, where required, exclusively by the nomination party. Any mineral lease selected from this Tract and awarded by the Louisiana State Mineral and Energy Board shall be without warranty of any kind, either express, implied, or statutory, including, but not limited to, the implied warranties of merchantability and fitness for a particular purpose. Should the mineral lease awarded by the Louisiana State Mineral and Energy Board be subsequently modified, cancelled or abrogated due to the existence of conflicting leases, operating agreements, private claims or other future obligations or conditions which may affect all or any portion of the leased Tract, it shall not relieve the Lessee of the obligation to pay any bonus due thereon to the Louisiana State Mineral and Energy Board, nor shall the Louisiana State Mineral and Energy Board be obligated to refund any consideration paid by the Lessor prior to such modification, cancellation, or abrogation, including, but not limited to, bonuses, rentals and royalties.

NOTE: The State of Louisiana does hereby reserve, and this lease shall be subject to, the imprescriptible right of surface use in the nature of a servitude in favor of the Department of Natural Resources, including its Offices and Commissions, for the sole purpose of implementing, constructing, servicing and maintaining approved coastal zone management and/or restoration projects. Utilization of any and all rights derived under this lease by the mineral lessee, its agents, successors or assigns, shall not interfere with nor hinder the reasonable surface use by the Department of Natural Resources, its Offices or Commissions, as herein above reserved.

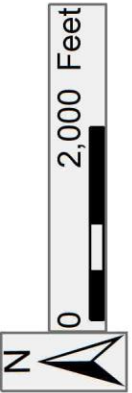
Applicant: CYPRESS ENERGY CORPORATION

Bidder	Cash Payment	Price/Acre	Rental	Oil	Gas	Other



PLAQUEMINES

BARATARIA BAY



P.O.B.



**TRACT 45040 - Plaquemines Parish, Louisiana**

All of the lands now or formerly constituting the beds and bottoms of all water bodies of every nature and description as to which title is vested in the State of Louisiana, together with all islands arising therein and other lands formed by accretion or by reliction, where allowed by law, excepting tax adjudicated lands, and not presently under mineral lease on December 12, 2018, situated in Plaquemines Parish, Louisiana, and more particularly described as follows: Beginning at a point having Coordinates of X = 2,467,674.52 and Y = 275,961.31; thence East approximately 9,710 feet to a point on the west boundary of State Lease No. 2028, as amended; thence along the boundaries of said State Lease No. 2028 the following courses: Southerly approximately 940 feet to a point, Westerly approximately 4,580 feet to a point and South 00 degrees 45 minutes 00 seconds East approximately 532 feet to the Northeast corner of State Lease No. 20984 having Coordinates of X = 2,472,823.55 and Y = 274,337.16; thence along the boundaries of said State Lease No. 20984 the following courses: South 89 degrees 15 minutes 14 seconds West 2,303.41 feet to a point having Coordinates of X = 2,470,520.33 and Y = 274,307.17, South 2,166.44 feet to a point having Coordinates of X = 2,470,520.33 and Y = 272,140.73 and South 69 degrees 45 minutes 37 seconds East 2,497.50 feet to a point on the west boundary of said State Lease No. 2028; thence along the boundaries of said State Lease No. 2028 the following courses: South 00 degrees 45 minutes 00 seconds East approximately 3,075 feet and North 89 degrees 15 minutes 00 seconds East approximately 7,210 feet to a point on the west boundary of State Lease No. 2104; thence along the boundaries of said State Lease No. 2104 the following courses: South 00 degrees 45 minutes 00 seconds East approximately 1,208 feet, South 89 degrees 15 minutes 00 seconds West 5,300 feet, and South 00 degrees 45 minutes 00 seconds East approximately 1,357 feet to a point; thence West approximately 7,173 feet to a point having Coordinates of X = 2,467,674.52 and Y = 265,661.77; thence North 10,299.55 feet to the point of beginning, containing approximately **1,455 acres**, all as more particularly outlined on a plat on file in the Office of Mineral Resources, Department of Natural Resources. All bearings, distances and coordinates are based on Louisiana Coordinate System of 1927, (North or South Zone), where applicable.

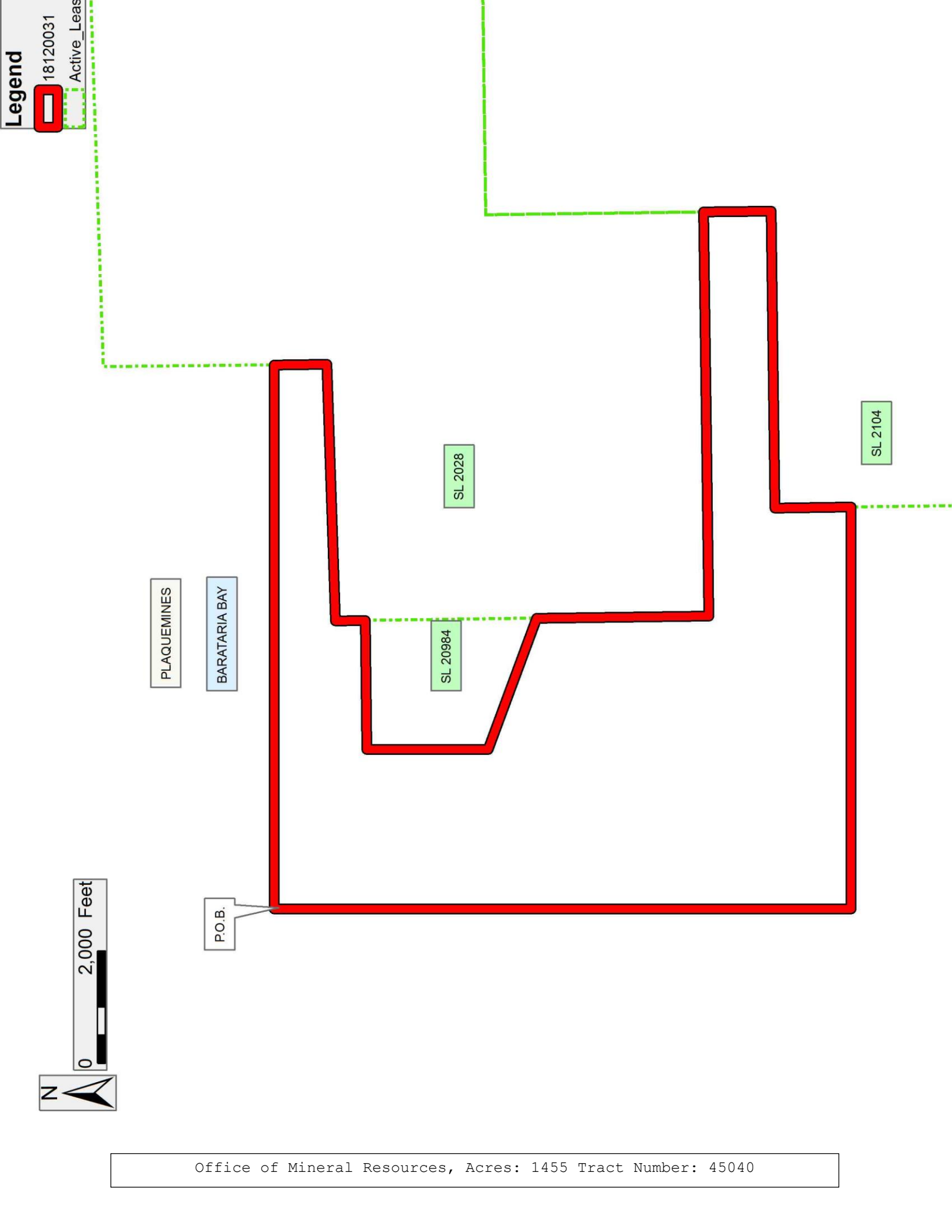
NOTE: The above description of the Tract nominated for lease has been provided and corrected, where required, exclusively by the nomination party. Any mineral lease selected from this Tract and awarded by the Louisiana State Mineral and Energy Board shall be without warranty of any kind, either express, implied, or statutory, including, but not limited to, the implied warranties of merchantability and fitness for a particular purpose. Should the mineral lease awarded by the Louisiana State Mineral and Energy Board be subsequently modified, cancelled or abrogated due to the existence of conflicting leases, operating agreements, private claims or other future obligations or conditions which may affect all or any portion of the leased Tract, it shall not relieve the Lessee of the obligation to pay any bonus due thereon to the Louisiana State Mineral and Energy Board, nor shall the Louisiana State Mineral and Energy Board be obligated to refund any

consideration paid by the Lessor prior to such modification, cancellation, or abrogation, including, but not limited to, bonuses, rentals and royalties.

NOTE: The State of Louisiana does hereby reserve, and this lease shall be subject to, the imprescriptible right of surface use in the nature of a servitude in favor of the Department of Natural Resources, including its Offices and Commissions, for the sole purpose of implementing, constructing, servicing and maintaining approved coastal zone management and/or restoration projects. Utilization of any and all rights derived under this lease by the mineral lessee, its agents, successors or assigns, shall not interfere with nor hinder the reasonable surface use by the Department of Natural Resources, its Offices or Commissions, as herein above reserved.

Applicant: CYPRESS ENERGY CORPORATION

Bidder	Cash Payment	Price/Acre	Rental	Oil	Gas	Other



**TRACT 45041 - Jefferson Parish, Louisiana**

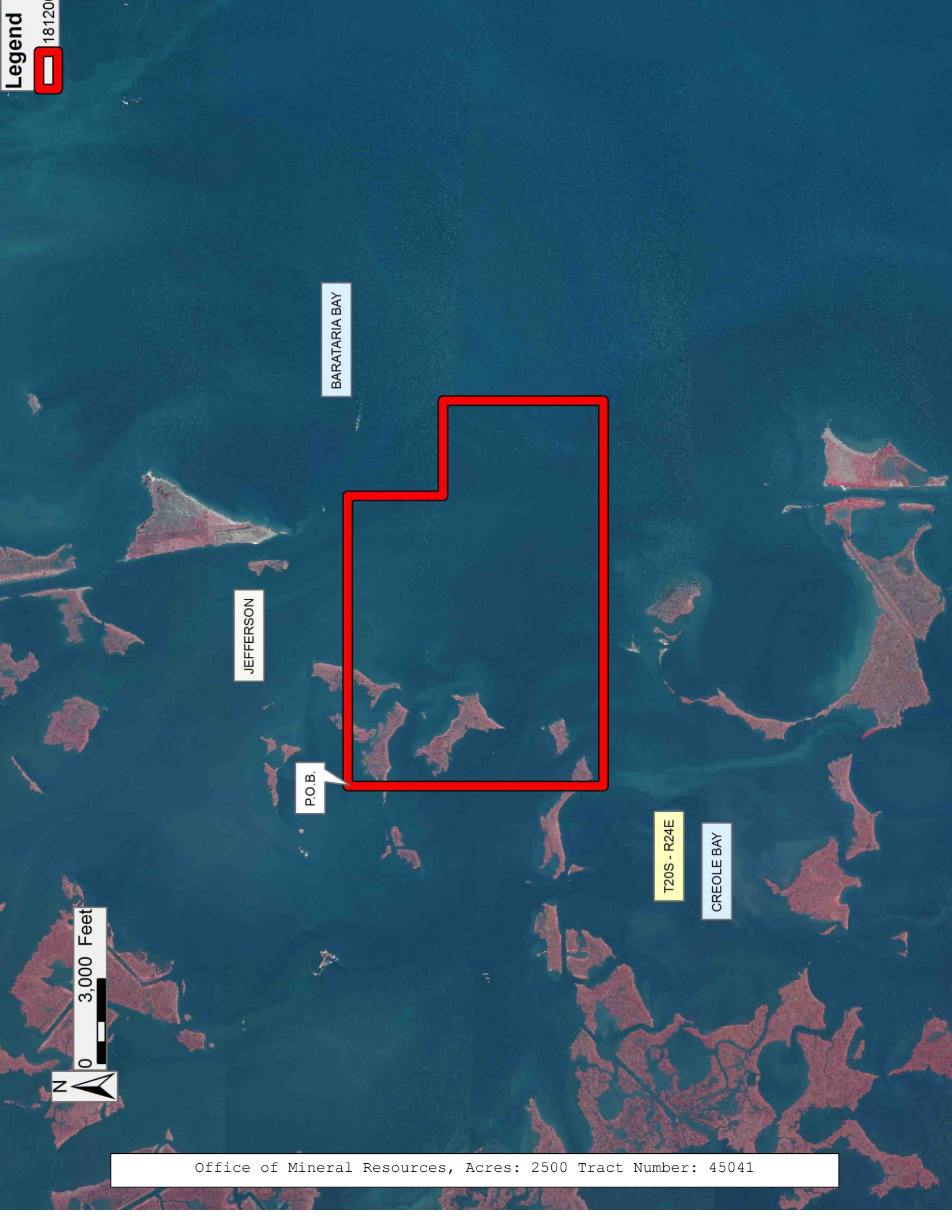
All of the lands now or formerly constituting the beds and bottoms of all water bodies of every nature and description as to which title is vested in the State of Louisiana, together with all islands arising therein and other lands formed by accretion or by reliction, where allowed by law, excepting tax adjudicated lands, and not presently under mineral lease on December 12, 2018, situated in Jefferson Parish, Louisiana, and more particularly described as follows: Beginning at a point having Coordinates of X = 2,419,318.55 and Y = 269,063.79; thence East 10,355.97 feet to a point having Coordinates of X = 2,429,674.52 and Y = 269,063.79; thence South 3,402.03 feet to a point having Coordinates of X = 2,429,674.52 and Y = 265,661.77; thence East 3,391.37 feet to a point having Coordinates of X = 2,433,065.89 and Y = 265,661.77; thence South 5,734.82 feet to a point having Coordinates of X = 2,433,065.89 and Y = 259,926.94; thence West 13,747.33 feet to a point having Coordinates of X = 2,419,318.55 and Y = 259,926.94; thence North 9,136.84 feet to the point of beginning, containing approximately **2,500 acres**, all as more particularly outlined on a plat on file in the Office of Mineral Resources, Department of Natural Resources. All bearings, distances and coordinates are based on Louisiana Coordinate System of 1927, (North or South Zone), where applicable.

NOTE: The above description of the Tract nominated for lease has been provided and corrected, where required, exclusively by the nomination party. Any mineral lease selected from this Tract and awarded by the Louisiana State Mineral and Energy Board shall be without warranty of any kind, either express, implied, or statutory, including, but not limited to, the implied warranties of merchantability and fitness for a particular purpose. Should the mineral lease awarded by the Louisiana State Mineral and Energy Board be subsequently modified, cancelled or abrogated due to the existence of conflicting leases, operating agreements, private claims or other future obligations or conditions which may affect all or any portion of the leased Tract, it shall not relieve the Lessee of the obligation to pay any bonus due thereon to the Louisiana State Mineral and Energy Board, nor shall the Louisiana State Mineral and Energy Board be obligated to refund any consideration paid by the Lessor prior to such modification, cancellation, or abrogation, including, but not limited to, bonuses, rentals and royalties.

NOTE: The State of Louisiana does hereby reserve, and this lease shall be subject to, the imprescriptible right of surface use in the nature of a servitude in favor of the Department of Natural Resources, including its Offices and Commissions, for the sole purpose of implementing, constructing, servicing and maintaining approved coastal zone management and/or restoration projects. Utilization of any and all rights derived under this lease by the mineral lessee, its agents, successors or assigns, shall not interfere with nor hinder the reasonable surface use by the Department of Natural Resources, its Offices or Commissions, as herein above reserved.

Applicant: CYPRESS ENERGY CORPORATION

Bidder	Cash Payment	Price/ Acre	Rental	Oil	Gas	Other



Office of Mineral Resources, Acres: 2500 Tract Number: 45041

**TRACT 45042 - Jefferson and Plaquemines Parishes, Louisiana**

All of the lands now or formerly constituting the beds and bottoms of all water bodies of every nature and description as to which title is vested in the State of Louisiana, together with all islands arising therein and other lands formed by accretion or by reliction, where allowed by law, excepting tax adjudicated lands, and not presently under mineral lease on December 12, 2018, situated in Jefferson and Plaquemines Parishes, Louisiana, and more particularly described as follows: Beginning at a point having Coordinates of X = 2,433,065.89 and Y = 265,661.77; thence East 9,500.00 feet to a point having Coordinates of X = 2,442,565.89 and Y = 265,661.77; thence South 10,351.06 feet to a point having Coordinates of X = 2,442,565.89 and Y = 255,310.70; thence West 5,486.27 feet to the northernmost Northeast corner of State Lease No. 356, as amended (Barataria Bay Dome Selection Area) having Coordinates of X = 2,437,079.62 and Y = 255,310.70; thence South 89 degrees 21 minutes 40 seconds West 4,013.98 feet along the north boundary of said State Lease No. 356, as amended, to a point having Coordinates of X = 2,433,065.89 and Y = 255,266.25; thence North 10,395.51 feet to the point of beginning, containing approximately **2,259.51 acres**, all as more particularly outlined on a plat on file in the Office of Mineral Resources, Department of Natural Resources. All bearings, distances and coordinates are based on Louisiana Coordinate System of 1927, (North or South Zone), where applicable.

NOTE: The above description of the Tract nominated for lease has been provided and corrected, where required, exclusively by the nomination party. Any mineral lease selected from this Tract and awarded by the Louisiana State Mineral and Energy Board shall be without warranty of any kind, either express, implied, or statutory, including, but not limited to, the implied warranties of merchantability and fitness for a particular purpose. Should the mineral lease awarded by the Louisiana State Mineral and Energy Board be subsequently modified, cancelled or abrogated due to the existence of conflicting leases, operating agreements, private claims or other future obligations or conditions which may affect all or any portion of the leased Tract, it shall not relieve the Lessee of the obligation to pay any bonus due thereon to the Louisiana State Mineral and Energy Board, nor shall the Louisiana State Mineral and Energy Board be obligated to refund any consideration paid by the Lessor prior to such modification, cancellation, or abrogation, including, but not limited to, bonuses, rentals and royalties.

NOTE: The State of Louisiana does hereby reserve, and this lease shall be subject to, the imprescriptible right of surface use in the nature of a servitude in favor of the Department of Natural Resources, including its Offices and Commissions, for the sole purpose of implementing, constructing, servicing and maintaining approved coastal zone management and/or restoration projects. Utilization of any and all rights derived under this lease by the mineral lessee, its agents, successors or assigns, shall not interfere with nor hinder the reasonable surface use by the Department of Natural Resources, its Offices or Commissions, as herein above reserved.



Applicant: CYPRESS ENERGY CORPORATION

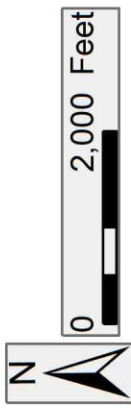
Bidder	Cash Payment	Price/Acre	Rental	Oil	Gas	Other

**Legend**  
18120033  
Blocks  
Active\_Leas

PLAQUEMINES

JEFFERSON

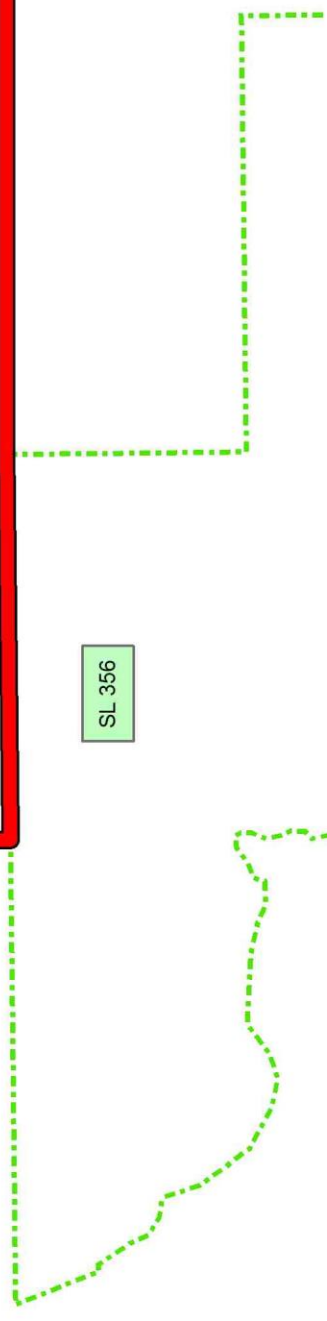
BARATARIA BAY



P.O.B.



SL 356



Office of Mineral Resources, Acres: 2259.51 Tract Number: 45042

**TRACT 45043 - Jefferson and Plaquemines Parishes, Louisiana**

All of the lands now or formerly constituting the beds and bottoms of all water bodies of every nature and description as to which title is vested in the State of Louisiana, together with all islands arising therein and other lands formed by accretion or by reliction, where allowed by law, excepting tax adjudicated lands, and not presently under mineral lease on December 12, 2018, situated in Jefferson and Plaquemines Parishes, Louisiana, and more particularly described as follows: Beginning at a point having Coordinates of X = 2,442,565.89 and Y = 265,661.77; thence East 9,500.00 feet to a point having Coordinates of X = 2,452,065.89 and Y = 265,661.77; thence South 10,351.07 feet to a point having Coordinates of X = 2,452,065.89 and Y = 255,310.70; thence West 9,500.00 feet to a point having Coordinates of X = 2,442,565.89 and Y = 255,310.70; thence North 10,351.07 feet to the point of beginning, containing approximately **2,257.46 acres**, all as more particularly outlined on a plat on file in the Office of Mineral Resources, Department of Natural Resources. All bearings, distances and coordinates are based on Louisiana Coordinate System of 1927, (North or South Zone), where applicable.

NOTE: The above description of the Tract nominated for lease has been provided and corrected, where required, exclusively by the nomination party. Any mineral lease selected from this Tract and awarded by the Louisiana State Mineral and Energy Board shall be without warranty of any kind, either express, implied, or statutory, including, but not limited to, the implied warranties of merchantability and fitness for a particular purpose. Should the mineral lease awarded by the Louisiana State Mineral and Energy Board be subsequently modified, cancelled or abrogated due to the existence of conflicting leases, operating agreements, private claims or other future obligations or conditions which may affect all or any portion of the leased Tract, it shall not relieve the Lessee of the obligation to pay any bonus due thereon to the Louisiana State Mineral and Energy Board, nor shall the Louisiana State Mineral and Energy Board be obligated to refund any consideration paid by the Lessor prior to such modification, cancellation, or abrogation, including, but not limited to, bonuses, rentals and royalties.

NOTE: The State of Louisiana does hereby reserve, and this lease shall be subject to, the imprescriptible right of surface use in the nature of a servitude in favor of the Department of Natural Resources, including its Offices and Commissions, for the sole purpose of implementing, constructing, servicing and maintaining approved coastal zone management and/or restoration projects. Utilization of any and all rights derived under this lease by the mineral lessee, its agents, successors or assigns, shall not interfere with nor hinder the reasonable surface use by the Department of Natural Resources, its Offices or Commissions, as herein above reserved.

Applicant: CYPRESS ENERGY CORPORATION

Bidder	Cash Payment	Price/Acre	Rental	Oil	Gas	Other



0 2,000 Feet

BARATARIA BAY

PLAQUEMINES

P.O.B.

JEFFERSON



**TRACT 45044 - Plaquemines Parish, Louisiana**

All of the lands now or formerly constituting the beds and bottoms of all water bodies of every nature and description as to which title is vested in the State of Louisiana, together with all islands arising therein and other lands formed by accretion or by reliction, where allowed by law, excepting tax adjudicated lands, and not presently under mineral lease on December 12, 2018, situated in Plaquemines Parish, Louisiana, and more particularly described as follows: Beginning at a point having Coordinates of X = 2,452,065.89 and Y = 265,661.77; thence East 9,500.00 feet to a point having Coordinates of X = 2,461,565.89 and Y = 265,661.77; thence South 10,351.07 feet to a point having Coordinates of X = 2,461,565.89 and Y = 255,310.70; thence West 9,500.00 feet to a point having Coordinates of X = 2,452,065.89 and Y = 255,310.70; thence North 10,351.07 feet to the point of beginning, containing approximately **2,257.46 acres**, all as more particularly outlined on a plat on file in the Office of Mineral Resources, Department of Natural Resources. All bearings, distances and coordinates are based on Louisiana Coordinate System of 1927, (North or South Zone), where applicable.

NOTE: The above description of the Tract nominated for lease has been provided and corrected, where required, exclusively by the nomination party. Any mineral lease selected from this Tract and awarded by the Louisiana State Mineral and Energy Board shall be without warranty of any kind, either express, implied, or statutory, including, but not limited to, the implied warranties of merchantability and fitness for a particular purpose. Should the mineral lease awarded by the Louisiana State Mineral and Energy Board be subsequently modified, cancelled or abrogated due to the existence of conflicting leases, operating agreements, private claims or other future obligations or conditions which may affect all or any portion of the leased Tract, it shall not relieve the Lessee of the obligation to pay any bonus due thereon to the Louisiana State Mineral and Energy Board, nor shall the Louisiana State Mineral and Energy Board be obligated to refund any consideration paid by the Lessor prior to such modification, cancellation, or abrogation, including, but not limited to, bonuses, rentals and royalties.

NOTE: The State of Louisiana does hereby reserve, and this lease shall be subject to, the imprescriptible right of surface use in the nature of a servitude in favor of the Department of Natural Resources, including its Offices and Commissions, for the sole purpose of implementing, constructing, servicing and maintaining approved coastal zone management and/or restoration projects. Utilization of any and all rights derived under this lease by the mineral lessee, its agents, successors or assigns, shall not interfere with nor hinder the reasonable surface use by the Department of Natural Resources, its Offices or Commissions, as herein above reserved.

Applicant: CYPRESS ENERGY CORPORATION

Bidder	Cash Payment	Price/Acre	Rental	Oil	Gas	Other

PLAQUEMINES

BARATARIA BAY



P.O.B.





**TRACT 45045 - Plaquemines Parish, Louisiana**

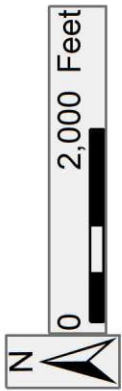
All of the lands now or formerly constituting the beds and bottoms of all water bodies of every nature and description as to which title is vested in the State of Louisiana, together with all islands arising therein and other lands formed by accretion or by reliction, where allowed by law, excepting tax adjudicated lands, and not presently under mineral lease on December 12, 2018, situated in Plaquemines Parish, Louisiana, and more particularly described as follows: Beginning at a point having Coordinates of X = 2,461,565.89 and Y = 265,661.77; thence East approximately 13,281 feet to a point on the West boundary of State Lease No. 2104, having a Coordinate of Y = 265,661.77; thence South 00 degrees 45 minutes 00 seconds East approximately 5,243 feet along the Western boundary of said State Lease No. 2104 to a point being its Southwest corner; thence South approximately 1,500 feet to a point having Coordinates of X = 2,474,915.89 and Y = 258,919.68; thence West 13,350.00 feet to a point having Coordinates of X = 2,461,565.89 and Y = 258,919.68; thence North 6,742.09 feet to the point of beginning, containing approximately **2,062 acres**, all as more particularly outlined on a plat on file in the Office of Mineral Resources, Department of Natural Resources. All bearings, distances and coordinates are based on Louisiana Coordinate System of 1927, (North or South Zone), where applicable.

NOTE: The above description of the Tract nominated for lease has been provided and corrected, where required, exclusively by the nomination party. Any mineral lease selected from this Tract and awarded by the Louisiana State Mineral and Energy Board shall be without warranty of any kind, either express, implied, or statutory, including, but not limited to, the implied warranties of merchantability and fitness for a particular purpose. Should the mineral lease awarded by the Louisiana State Mineral and Energy Board be subsequently modified, cancelled or abrogated due to the existence of conflicting leases, operating agreements, private claims or other future obligations or conditions which may affect all or any portion of the leased Tract, it shall not relieve the Lessee of the obligation to pay any bonus due thereon to the Louisiana State Mineral and Energy Board, nor shall the Louisiana State Mineral and Energy Board be obligated to refund any consideration paid by the Lessor prior to such modification, cancellation, or abrogation, including, but not limited to, bonuses, rentals and royalties.

NOTE: The State of Louisiana does hereby reserve, and this lease shall be subject to, the imprescriptible right of surface use in the nature of a servitude in favor of the Department of Natural Resources, including its Offices and Commissions, for the sole purpose of implementing, constructing, servicing and maintaining approved coastal zone management and/or restoration projects. Utilization of any and all rights derived under this lease by the mineral lessee, its agents, successors or assigns, shall not interfere with nor hinder the reasonable surface use by the Department of Natural Resources, its Offices or Commissions, as herein above reserved.

Applicant: CYPRESS ENERGY CORPORATION

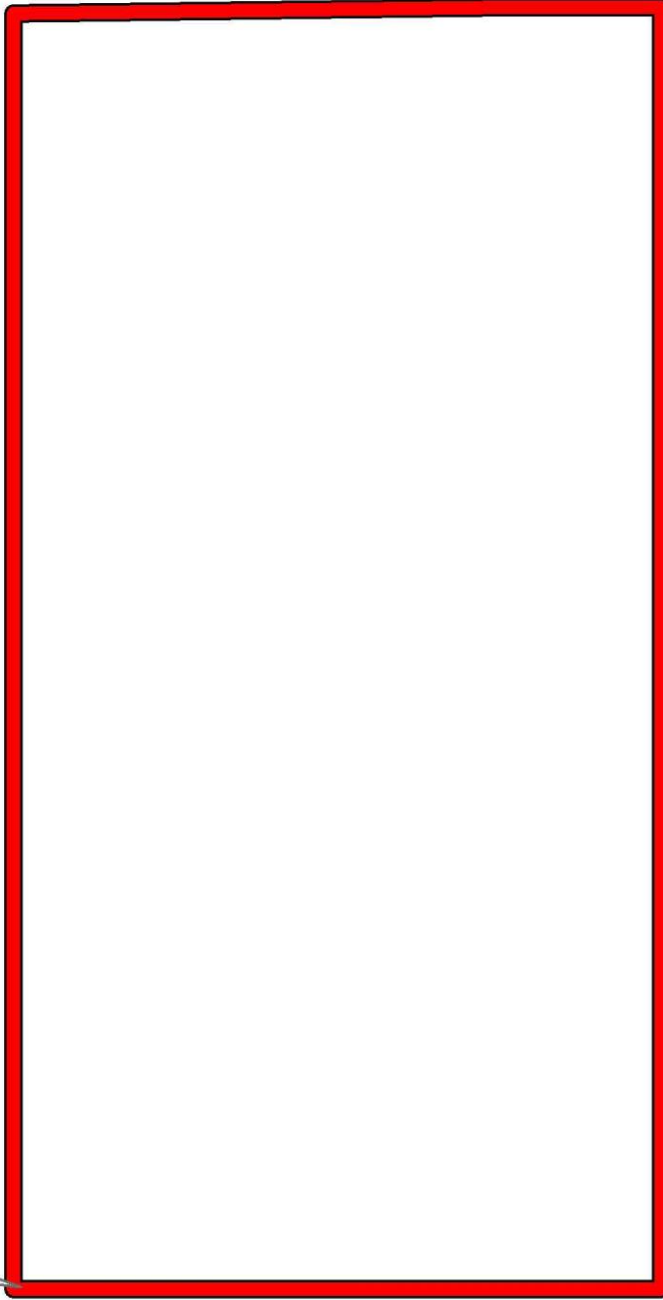
Bidder	Cash Payment	Price/ Acre	Rental	Oil	Gas	Other



PLAQUEMINES

BARATARIA BAY

P.O.B.



**TRACT 45046 - Jefferson Parish, Louisiana**

All of the lands now or formerly constituting the beds and bottoms of all water bodies of every nature and description as to which title is vested in the State of Louisiana, together with all islands arising therein and other lands formed by accretion or by reliction, where allowed by law, excepting tax adjudicated lands, and not presently under mineral lease on December 12, 2018, situated in Jefferson Parish, Louisiana, and more particularly described as follows: Beginning at a point having Coordinates of X = 2,419,868.55 and Y = 259,926.94; thence East 13,197.33 feet to a point having Coordinates of X = 2,433,065.89 and Y = 259,926.94; thence South 4,660.69 feet to a point on the north boundary of State Lease No. 356, as amended (Barataria Bay Dome Selection Area) having Coordinates of X = 2,433,065.89 and Y = 255,266.25; thence along the boundaries of said State Lease No. 356 the following courses: South 89 degrees 21 minutes 40 seconds West 4,835.41 feet to its Northwest corner having Coordinates of X = 2,428,230.21 and Y = 255,221.01, Southeasterly, Easterly, Southerly and Southwesterly to a point of intersection with the north boundary of State Lease No. 17432, as amended; thence West approximately 1,715 feet along the north boundary of said State Lease No. 17432 to its Northwest corner and the Northeast corner of State Lease No. 17739, as amended having Coordinates of X = 2,430,145.88 and Y = 251,164.00; thence along the boundaries of said State Lease No. 17739 the following courses: West 1,807.03 feet to a point having Coordinates of X = 2,428,338.85 and Y = 251,164.00, South 00 degrees 58 minutes 55 seconds East 372.73 feet to a point having Coordinates of X = 2,428,345.23 and Y = 250,791.33 and South 01 degrees 15 minutes 46 seconds East 1,116.11 feet to a point having Coordinates of X = 2,428,369.83 and Y = 249,675.49; thence North 89 degrees 40 minutes 08 seconds West 8,501.42 feet to a point having Coordinates of X = 2,419,868.55 and Y = 249,724.61; thence North 10,202.33 feet to the point of beginning, containing approximately **2,461 acres**, all as more particularly outlined on a plat on file in the Office of Mineral Resources, Department of Natural Resources. All bearings, distances and coordinates are based on Louisiana Coordinate System of 1927, (North or South Zone), where applicable.

NOTE: The above description of the Tract nominated for lease has been provided and corrected, where required, exclusively by the nomination party. Any mineral lease selected from this Tract and awarded by the Louisiana State Mineral and Energy Board shall be without warranty of any kind, either express, implied, or statutory, including, but not limited to, the implied warranties of merchantability and fitness for a particular purpose. Should the mineral lease awarded by the Louisiana State Mineral and Energy Board be subsequently modified, cancelled or abrogated due to the existence of conflicting leases, operating agreements, private claims or other future obligations or conditions which may affect all or any portion of the leased Tract, it shall not relieve the Lessee of the obligation to pay any bonus due thereon to the Louisiana State Mineral and Energy Board, nor shall the Louisiana State Mineral and Energy Board be obligated to refund any consideration paid by the Lessor prior to such modification, cancellation, or abrogation, including, but not limited to, bonuses, rentals and royalties.

NOTE: The State of Louisiana does hereby reserve, and this lease shall be subject to, the imprescriptible right of surface use in the nature of a servitude in favor of the Department of Natural Resources, including its Offices and Commissions, for the sole purpose of implementing, constructing, servicing and maintaining approved coastal zone management and/or restoration projects. Utilization of any and all rights derived under this lease by the mineral lessee, its agents, successors or assigns, shall not interfere with nor hinder the reasonable surface use by the Department of Natural Resources, its Offices or Commissions, as herein above reserved.

Applicant: CYPRESS ENERGY CORPORATION

Bidder	Cash Payment	Price/Acre	Rental	Oil	Gas	Other

Legend  
18120038  
Active\_Leas

0 2,000 Feet

T20S - R24E

P.O.B.

JEFFERSON

CREOLE BAY

SL 356

SL 17739

SL 17432

Office of Mineral Resources, Acres: 2461 Tract Number: 45046