

**TRACT 45027 - Caddo Parish, Louisiana**

All of the lands now or formerly constituting the beds and bottoms of all water bodies of every nature and description as to which title is vested in the State of Louisiana, together with all islands arising therein and other lands formed by accretion or by reliction, where allowed by law, excepting tax adjudicated lands, and not presently under mineral lease on December 12, 2018, situated in Caddo Parish, Louisiana, and more particularly described as follows: Beginning at a point Coordinates of X = 1,563,901.18 and Y = 685,838.49; thence South 88 degrees 02 minutes 24 seconds East 5,419.48 feet to a point having Coordinates of X = 1,569,317.49 and Y = 685,653.13; thence South 01 degrees 58 minutes 32 seconds West 5,082.65 feet to a point on the North line of State Lease No. 21836 having Coordinates of X = 1,569,142.28 and Y = 680,573.50; thence West 5,357.59 feet along the North line of said State Lease No. 21836 to a point having Coordinates of X = 1,563,784.69 and Y = 680,573.50; thence North 01 degrees 16 minutes 03 seconds East 5,266.28 feet to the point of beginning, **LESS AND EXCEPT** any right, title, and interest in lands owned by and not under lease from the State of Louisiana, on behalf of the Caddo Parish School Board, situated in Section 16, Township 18 North, Range 15 West, Caddo Parish, Louisiana, contained within the above described tract, containing approximately **142 acres**, all as more particularly outlined on a plat on file in the Office of Mineral Resources, Department of Natural Resources. All bearings, distances and coordinates are based on Louisiana Coordinate System of 1927, (North or South Zone), where applicable.

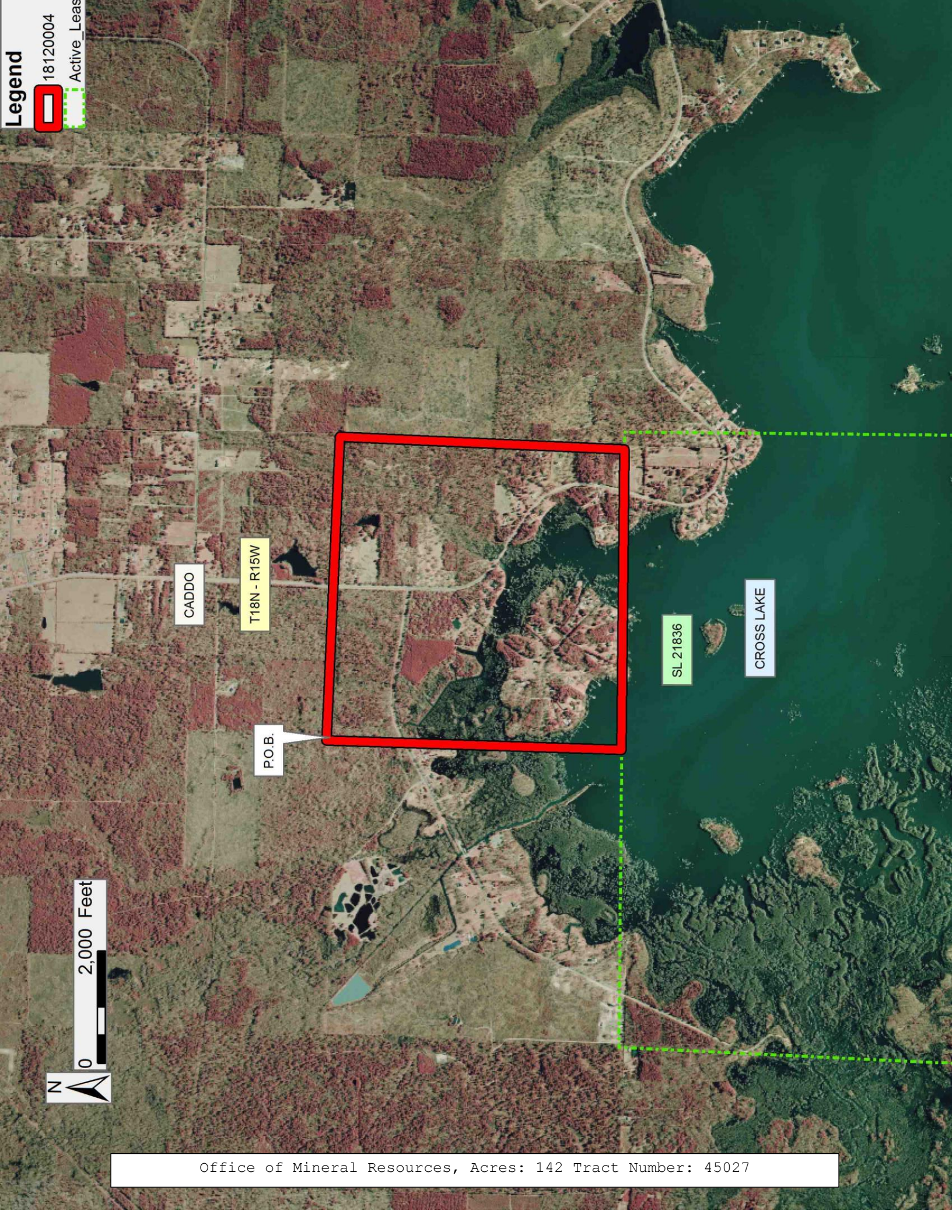
NOTE: The above description of the Tract nominated for lease has been provided and corrected, where required, exclusively by the nomination party. Any mineral lease selected from this Tract and awarded by the Louisiana State Mineral and Energy Board shall be without warranty of any kind, either express, implied, or statutory, including, but not limited to, the implied warranties of merchantability and fitness for a particular purpose. Should the mineral lease awarded by the Louisiana State Mineral and Energy Board be subsequently modified, cancelled or abrogated due to the existence of conflicting leases, operating agreements, private claims or other future obligations or conditions which may affect all or any portion of the leased Tract, it shall not relieve the Lessee of the obligation to pay any bonus due thereon to the Louisiana State Mineral and Energy Board, nor shall the Louisiana State Mineral and Energy Board be obligated to refund any consideration paid by the Lessor prior to such modification, cancellation, or abrogation, including, but not limited to, bonuses, rentals and royalties.

NOTE: Lessee agrees not to erect any derrick, tank, warehouse or other equipment or structure on the leased premises nor shall lessee interfere, in any manner, with lessor's use of the property. Lessee shall have, however, the complete right to drill for, produce, extract and recover the minerals in and beneath said land by drilling or other operations conducted from the surface of other lands or by the pooling or unitization of the leased premises with other land, lease or leases in the area.

Applicant: MCGINTY-DURHAM, INC.

Bidder	Cash Payment	Price/Acre	Rental	Oil	Gas	Other





Legend

18120004

Active\_Leas



CADDO

T18N - R15W

P.O.B.



SL 21836

CROSS LAKE



0 2,000 Feet

Office of Mineral Resources, Acres: 142 Tract Number: 45027



**TRACT 45028 - Caddo Parish, Louisiana**

All of the lands now or formerly constituting the beds and bottoms of all water bodies of every nature and description as to which title is vested in the State of Louisiana, together with all islands arising therein and other lands formed by accretion or by reliction, where allowed by law, excepting tax adjudicated lands, and not presently under mineral lease on December 12, 2018, situated in Caddo Parish, Louisiana, and more particularly described as follows: Beginning at a point on the boundary of State Lease No. 14499 having Coordinates of X = 1,579,862.94 and Y = 680,573.50, said point also being the Northeast corner of State Lease No. 21837; thence West 6,400.00 feet along the North line of said State Lease No. 21837 to a point having Coordinates of X = 1,573,462.94 and Y = 680,573.50; thence North 2,705.00 feet to a point having Coordinates of X = 1,573,462.94 and Y = 683,278.50; thence East 2,800.00 feet to a point having Coordinates of X = 1,576,262.94 and Y = 683,278.50; thence North 4,000.00 feet to a point having Coordinates of X = 1,576,262.94 and Y = 687,278.50; thence East 8,500.00 feet to a point having Coordinates of X = 1,584,762.94 and Y = 687,278.50; thence South 5,980.28 feet to a point having Coordinates of X = 1,584,762.94 and Y = 681,298.22; thence Westerly approximately 2,019 feet to a point being the Northeast corner of said State Lease No. 14499; thence along the boundary of said State Lease No. 14499 the following: Westerly, Southerly, Westerly and Southerly along the boundary of said State Lease No. 14499 to the point of beginning, containing approximately **315 acres**, all as more particularly outlined on a plat on file in the Office of Mineral Resources, Department of Natural Resources. All bearings, distances and coordinates are based on Louisiana Coordinate System of 1927, (North or South Zone), where applicable.

NOTE: The above description of the Tract nominated for lease has been provided and corrected, where required, exclusively by the nomination party. Any mineral lease selected from this Tract and awarded by the Louisiana State Mineral and Energy Board shall be without warranty of any kind, either express, implied, or statutory, including, but not limited to, the implied warranties of merchantability and fitness for a particular purpose. Should the mineral lease awarded by the Louisiana State Mineral and Energy Board be subsequently modified, cancelled or abrogated due to the existence of conflicting leases, operating agreements, private claims or other future obligations or conditions which may affect all or any portion of the leased Tract, it shall not relieve the Lessee of the obligation to pay any bonus due thereon to the Louisiana State Mineral and Energy Board, nor shall the Louisiana State Mineral and Energy Board be obligated to refund any consideration paid by the Lessor prior to such modification, cancellation, or abrogation, including, but not limited to, bonuses, rentals and royalties.

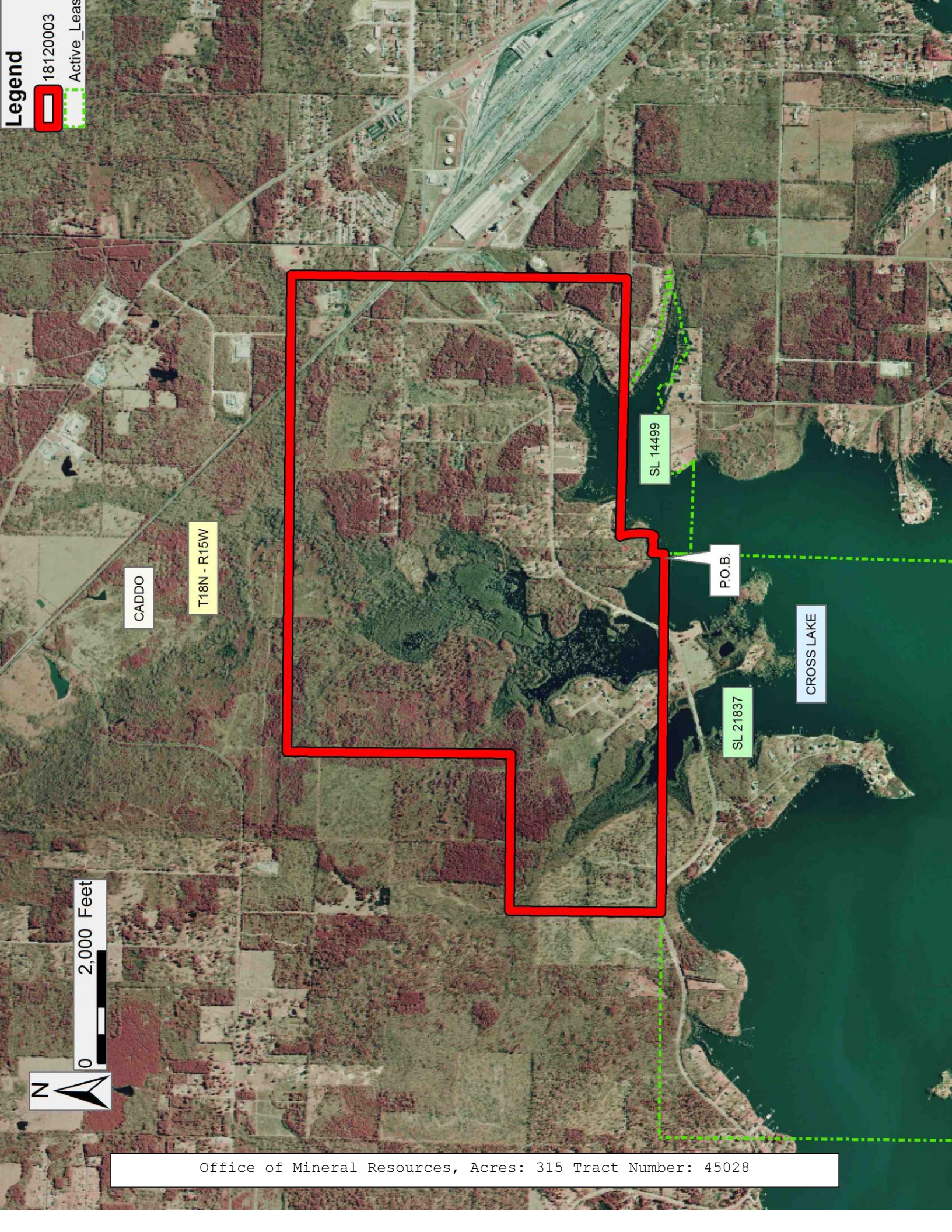
NOTE: Lessee agrees not to erect any derrick, tank, warehouse or other equipment or structure on the leased premises nor shall lessee interfere, in any manner, with lessor's use of the property. Lessee shall have, however, the complete right to drill for, produce, extract and recover the minerals in and beneath said land by drilling or other operations conducted from the

surface of other lands or by the pooling or unitization of the leased premises with other land, lease or leases in the area.

Applicant: MCGINTY-DURHAM, INC.

Bidder	Cash Payment	Price/Acre	Rental	Oil	Gas	Other





Legend

18120003

Active\_Leas



CADDO

T18N - R15W

SL 14499

P.O.B.

SL 21837

CROSS LAKE

0 2,000 Feet



Office of Mineral Resources, Acres: 315 Tract Number: 45028



**TRACT 45029 - East Feliciana and West Feliciana Parishes, Louisiana**

All of the lands now or formerly constituting the beds and bottoms of all water bodies of every nature and description as to which title is vested in the State of Louisiana, together with all islands arising therein and other lands formed by accretion or by reliction, where allowed by law, excepting tax adjudicated lands, and not presently under mineral lease on December 12, 2018, situated in East Feliciana and West Feliciana Parishes, Louisiana, and more particularly described as follows: Beginning at the Southwest corner of State Lease No. 21830 having Coordinates of X = 2,032,245.00 and Y = 817,180.00; thence East 14,000.00 feet along the boundary of said State Lease No. 21830 to its Southeast corner having Coordinates of X = 2,046,245.00 and Y = 817,180.00; thence South 11,700.00 feet to a point having Coordinates of X = 2,046,245.00 and Y = 805,480.00; thence West 8,645.00 feet to the Northeast corner of State Lease No. 21795 having Coordinates of X = 2,037,600.00 and Y = 805,480.00; thence West 5,355.00 feet along the boundary of said State Lease No. 21795 to a point having Coordinates of X = 2,032,245.00 and Y = 805,480.00; thence North 11,700.00 feet to the point of beginning, containing approximately **37 acres**, all as more particularly outlined on a plat on file in the Office of Mineral Resources, Department of Natural Resources. All bearings, distances and coordinates are based on Louisiana Coordinate System of 1927, (North or South Zone), where applicable.

NOTE: The above description of the Tract nominated for lease has been provided and corrected, where required, exclusively by the nomination party. Any mineral lease selected from this Tract and awarded by the Louisiana State Mineral and Energy Board shall be without warranty of any kind, either express, implied, or statutory, including, but not limited to, the implied warranties of merchantability and fitness for a particular purpose. Should the mineral lease awarded by the Louisiana State Mineral and Energy Board be subsequently modified, cancelled or abrogated due to the existence of conflicting leases, operating agreements, private claims or other future obligations or conditions which may affect all or any portion of the leased Tract, it shall not relieve the Lessee of the obligation to pay any bonus due thereon to the Louisiana State Mineral and Energy Board, nor shall the Louisiana State Mineral and Energy Board be obligated to refund any consideration paid by the Lessor prior to such modification, cancellation, or abrogation, including, but not limited to, bonuses, rentals and royalties.

NOTE: The Office of Mineral Resources will require a minimum bonus of \$500 per acre and a minimum royalty of 25%.

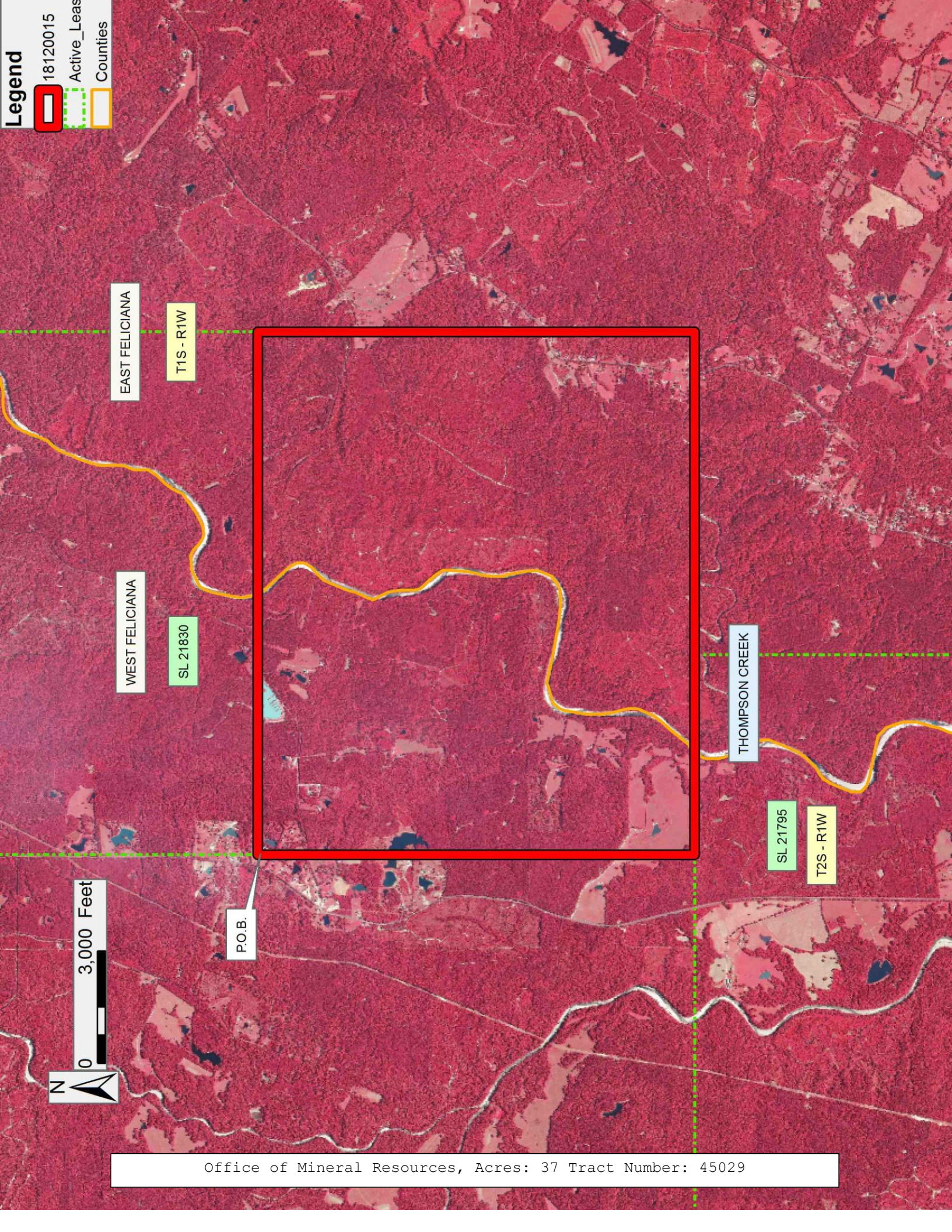
Applicant: M.J. ENERGY LAND SERVICES, INC.

Bidder	Cash Payment	Price/Acre	Rental	Oil	Gas	Other



**Legend**

- 18120015
- Active\_Leas
- Counties



0 3,000 Feet





**TRACT 45030 - East Feliciana and West Feliciana Parishes, Louisiana**

All of the lands now or formerly constituting the beds and bottoms of all water bodies of every nature and description as to which title is vested in the State of Louisiana, together with all islands arising therein and other lands formed by accretion or by reliction, where allowed by law, excepting tax adjudicated lands, and not presently under mineral lease on December 12, 2018, situated in East Feliciana and West Feliciana Parishes, Louisiana, and more particularly described as follows: Beginning at the Southwest corner of State Lease No. 21795 having Coordinates of X = 2,019,120.00 and Y = 787,000.00; thence East 18,480.00 feet along the boundary of said State Lease No. 21795 to its Southeast corner having Coordinates of X = 2,037,600.00 and Y = 787,000.00; thence South 18,480.00 feet to a point having Coordinates of X = 2,037,600.00 and Y = 768,520.00; thence West 5,000.00 feet to the Northeast corner of State Lease No. 21796 having Coordinates of X = 2,032,600.00 and Y = 768,520.00; thence West 13,480.00 feet along the boundary of said State Lease No. 21796 to a point having Coordinates of X = 2,019,120.00 and Y = 768,520.00; thence North 18,480.00 feet to the point of beginning, (This lease includes only waterbottoms claimed and owned by the state and specifically excludes any land which the state may claim or own and to which the mineral rights are vested in the state), containing approximately **101 acres**, all as more particularly outlined on a plat on file in the Office of Mineral Resources, Department of Natural Resources. All bearings, distances and coordinates are based on Louisiana Coordinate System of 1927, (North or South Zone), where applicable.

NOTE: The above description of the Tract nominated for lease has been provided and corrected, where required, exclusively by the nomination party. Any mineral lease selected from this Tract and awarded by the Louisiana State Mineral and Energy Board shall be without warranty of any kind, either express, implied, or statutory, including, but not limited to, the implied warranties of merchantability and fitness for a particular purpose. Should the mineral lease awarded by the Louisiana State Mineral and Energy Board be subsequently modified, cancelled or abrogated due to the existence of conflicting leases, operating agreements, private claims or other future obligations or conditions which may affect all or any portion of the leased Tract, it shall not relieve the Lessee of the obligation to pay any bonus due thereon to the Louisiana State Mineral and Energy Board, nor shall the Louisiana State Mineral and Energy Board be obligated to refund any consideration paid by the Lessor prior to such modification, cancellation, or abrogation, including, but not limited to, bonuses, rentals and royalties.

NOTE: The Office of Mineral Resources will require a minimum bonus of \$500 per acre and a minimum royalty of 25%.



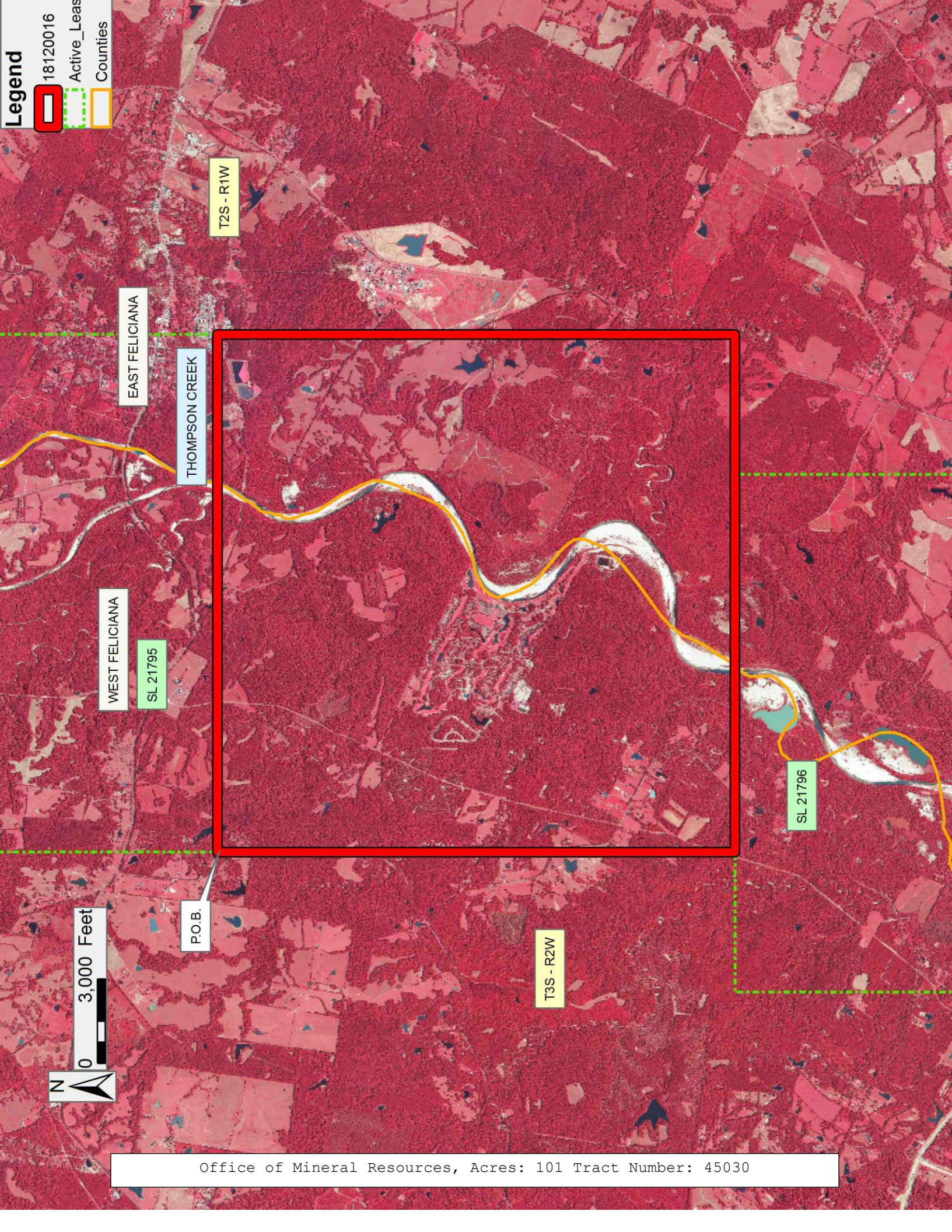
Applicant: M.J. ENERGY LAND SERVICES, INC.

Bidder	Cash Payment	Price/Acre	Rental	Oil	Gas	Other



**Legend**

- 18120016
- Active\_Leas
- Counties



EAST FELICIANA

WEST FELICIANA

THOMPSON CREEK

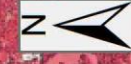
T2S - R1W

T3S - R2W

SL 21795

SL 21796

P.O.B.



Office of Mineral Resources, Acres: 101 Tract Number: 45030



**TRACT 45031 - Acadia Parish, Louisiana**

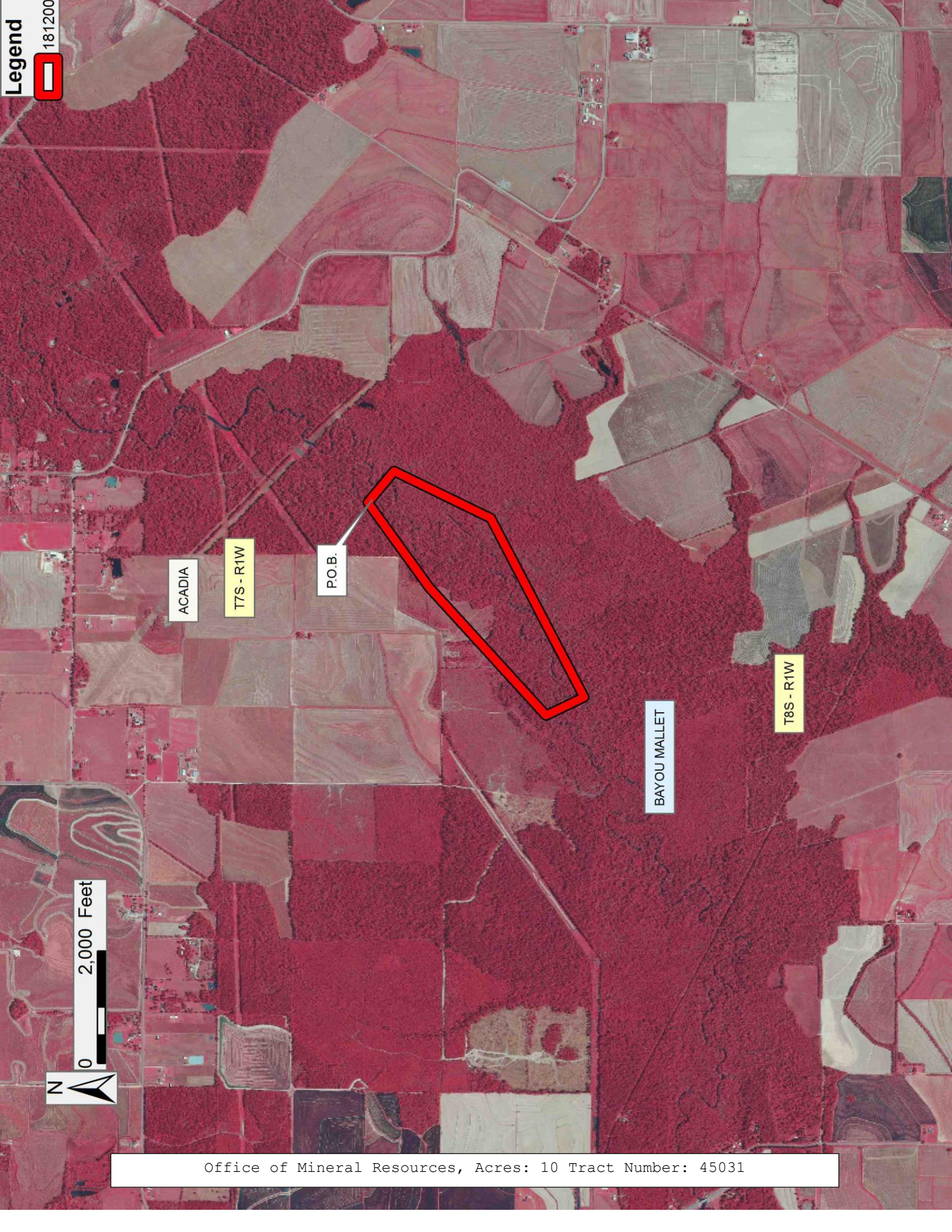
All of the lands now or formerly constituting the beds and bottoms of all water bodies of every nature and description as to which title is vested in the State of Louisiana, together with all islands arising therein and other lands formed by accretion or by reliction, where allowed by law, excepting tax adjudicated lands, and not presently under mineral lease on December 12, 2018, situated in Acadia Parish, Louisiana, and more particularly described as follows: Beginning at a point having Coordinates of X = 1,645,455.72 and Y = 636,029.83; thence South 50 degrees 13 minutes 17 seconds East 727.88 feet to a point having Coordinates of X = 1,646,015.11 and Y = 635,564.12; thence South 26 degrees 02 minutes 05 seconds West 1,916.62 feet to a point having Coordinates of X = 1,645,173.88 and Y = 633,841.98; thence South 62 degrees 25 minutes 00 seconds West 3,606.13 feet to a point having Coordinates of X = 1,641,977.63 and Y = 632,172.21; thence North 25 degrees 25 minutes 45 seconds West 750.07 feet to a point having Coordinates of X = 1,641,655.56 and Y = 632,849.61; thence North 47 degrees 33 minutes 59 seconds East 3,098.13 feet to a point having Coordinates of X = 1,643,942.16 and Y = 634,940.03; thence North 54 degrees 14 minutes 43 seconds East 1,865.08 feet to the point of beginning, containing approximately **10 acres**, all as more particularly outlined on a plat on file in the Office of Mineral Resources, Department of Natural Resources. All bearings, distances and coordinates are based on Louisiana Coordinate System of 1927, (North or South Zone), where applicable.

NOTE: The above description of the Tract nominated for lease has been provided and corrected, where required, exclusively by the nomination party. Any mineral lease selected from this Tract and awarded by the Louisiana State Mineral and Energy Board shall be without warranty of any kind, either express, implied, or statutory, including, but not limited to, the implied warranties of merchantability and fitness for a particular purpose. Should the mineral lease awarded by the Louisiana State Mineral and Energy Board be subsequently modified, cancelled or abrogated due to the existence of conflicting leases, operating agreements, private claims or other future obligations or conditions which may affect all or any portion of the leased Tract, it shall not relieve the Lessee of the obligation to pay any bonus due thereon to the Louisiana State Mineral and Energy Board, nor shall the Louisiana State Mineral and Energy Board be obligated to refund any consideration paid by the Lessor prior to such modification, cancellation, or abrogation, including, but not limited to, bonuses, rentals and royalties.

Applicant: ANCHOR LAND & EXPLORATION COMPANY, L.L.C.

Bidder	Cash Payment	Price/ Acre	Rental	Oil	Gas	Other







**TRACT 45032 - St. Martin Parish, Louisiana**

All of the lands now or formerly constituting the beds and bottoms of all water bodies of every nature and description as to which title is vested in the State of Louisiana, together with all islands arising therein and other lands formed by accretion or by reliction, where allowed by law, excepting tax adjudicated lands, and not presently under mineral lease on December 12, 2018, situated in St. Martin Parish, Louisiana, and more particularly described as follows: Beginning at a point having Coordinates of X = 1,888,375.50 and Y = 601,577.21; thence East 16,427.89 feet to a point having Coordinates of X = 1,904,803.39 and Y = 601,577.21; thence South 18,449.67 feet to a point having Coordinates of X = 1,904,803.39 and Y = 583,127.54; thence West 16,427.89 feet to a point having Coordinates of X = 1,888,375.50 and Y = 583,127.54; thence North 18,449.67 feet to the point of beginning, **LESS AND EXCEPT** any right, title, and interest in lands owned by and not under lease from the State of Louisiana, on behalf of the St. Martin Parish School Board, situated in Section 16, Township 9 South, Range 8 East, St. Martin Parish, Louisiana, contained within the above described tract, (This lease includes only waterbottoms claimed and owned by the state and specifically excludes any land which the state may claim or own and to which the mineral rights are vested in the state), containing approximately **498 acres**, all as more particularly outlined on a plat on file in the Office of Mineral Resources, Department of Natural Resources. All bearings, distances and coordinates are based on Louisiana Coordinate System of 1927, (North or South Zone), where applicable.

NOTE: The above description of the Tract nominated for lease has been provided and corrected, where required, exclusively by the nomination party. Any mineral lease selected from this Tract and awarded by the Louisiana State Mineral and Energy Board shall be without warranty of any kind, either express, implied, or statutory, including, but not limited to, the implied warranties of merchantability and fitness for a particular purpose. Should the mineral lease awarded by the Louisiana State Mineral and Energy Board be subsequently modified, cancelled or abrogated due to the existence of conflicting leases, operating agreements, private claims or other future obligations or conditions which may affect all or any portion of the leased Tract, it shall not relieve the Lessee of the obligation to pay any bonus due thereon to the Louisiana State Mineral and Energy Board, nor shall the Louisiana State Mineral and Energy Board be obligated to refund any consideration paid by the Lessor prior to such modification, cancellation, or abrogation, including, but not limited to, bonuses, rentals and royalties.

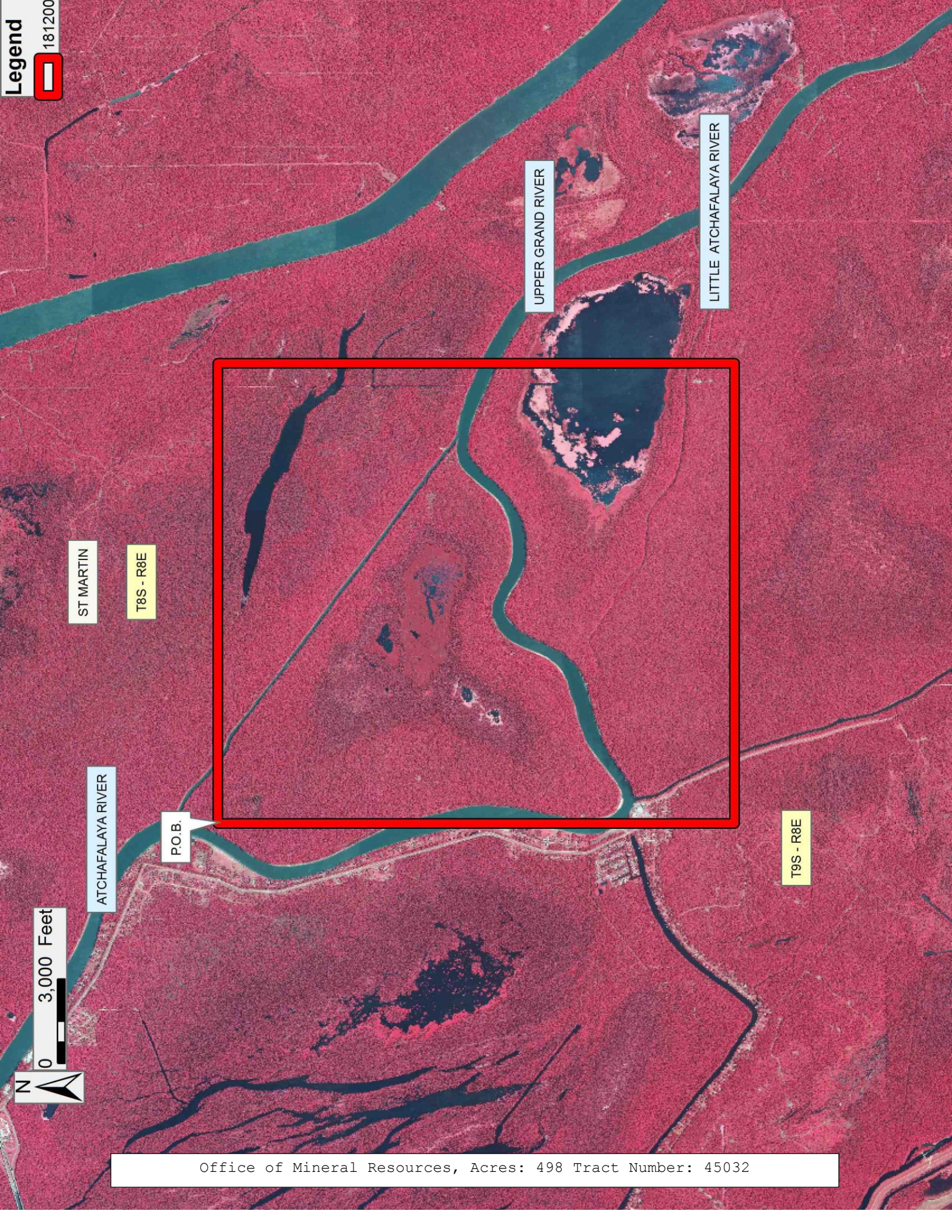
NOTE: This acreage is entirely within the boundary of the Atchafalaya Basin Legal Area.

Applicant: THEOPHILUS OIL, GAS & LAND SERVICES, LLC

Bidder	Cash Payment	Price/Acre	Rental	Oil	Gas	Other



Legend  
181200



ST MARTIN

T8S - R8E

UPPER GRAND RIVER

LITTLE ATCHAFALAYA RIVER

ATCHAFALAYA RIVER

P.O.B.

T9S - R8E

0 3,000 Feet



Office of Mineral Resources, Acres: 498 Tract Number: 45032



**TRACT 45033 - Iberville and St. Martin Parishes, Louisiana**

All of the lands now or formerly constituting the beds and bottoms of all water bodies of every nature and description as to which title is vested in the State of Louisiana, together with all islands arising therein and other lands formed by accretion or by reliction, where allowed by law, excepting tax adjudicated lands, and not presently under mineral lease on December 12, 2018, situated in Iberville and St. Martin Parishes, Louisiana, and more particularly described as follows: Beginning at a point having Coordinates of X = 1,904,803.39 and Y = 596,413.72; thence East 17,045.19 feet to a point having Coordinates of X = 1,921,848.58 and Y = 596,413.72; thence South 11,635.02 feet to the Northeast corner of State Lease No. 21817, having Coordinates of X = 1,921,848.58 and Y = 584,778.70; thence along the boundary of said State Lease No. 21817 the following courses and distances: West 11,693.21 feet to a point having Coordinates of X = 1,910,155.37 and Y = 548,778.70, and South 1,651.16 feet to a point having Coordinates of X = 1,910,155.37 and Y = 583,127.54; thence West 5,351.98 feet to a point having Coordinates of X = 1,904,803.39 and Y = 583,127.54; thence North 13,286.18 feet to the point of beginning, (This lease includes only waterbottoms claimed and owned by the state and specifically excludes any land which the state may claim or own and to which the mineral rights are vested in the state), containing approximately **1,290 acres**, all as more particularly outlined on a plat on file in the Office of Mineral Resources, Department of Natural Resources. All bearings, distances and coordinates are based on Louisiana Coordinate System of 1927, (North or South Zone), where applicable.

NOTE: The above description of the Tract nominated for lease has been provided and corrected, where required, exclusively by the nomination party. Any mineral lease selected from this Tract and awarded by the Louisiana State Mineral and Energy Board shall be without warranty of any kind, either express, implied, or statutory, including, but not limited to, the implied warranties of merchantability and fitness for a particular purpose. Should the mineral lease awarded by the Louisiana State Mineral and Energy Board be subsequently modified, cancelled or abrogated due to the existence of conflicting leases, operating agreements, private claims or other future obligations or conditions which may affect all or any portion of the leased Tract, it shall not relieve the Lessee of the obligation to pay any bonus due thereon to the Louisiana State Mineral and Energy Board, nor shall the Louisiana State Mineral and Energy Board be obligated to refund any consideration paid by the Lessor prior to such modification, cancellation, or abrogation, including, but not limited to, bonuses, rentals and royalties.

NOTE: This acreage is entirely within the boundary of the Atchafalaya Basin Legal Area.



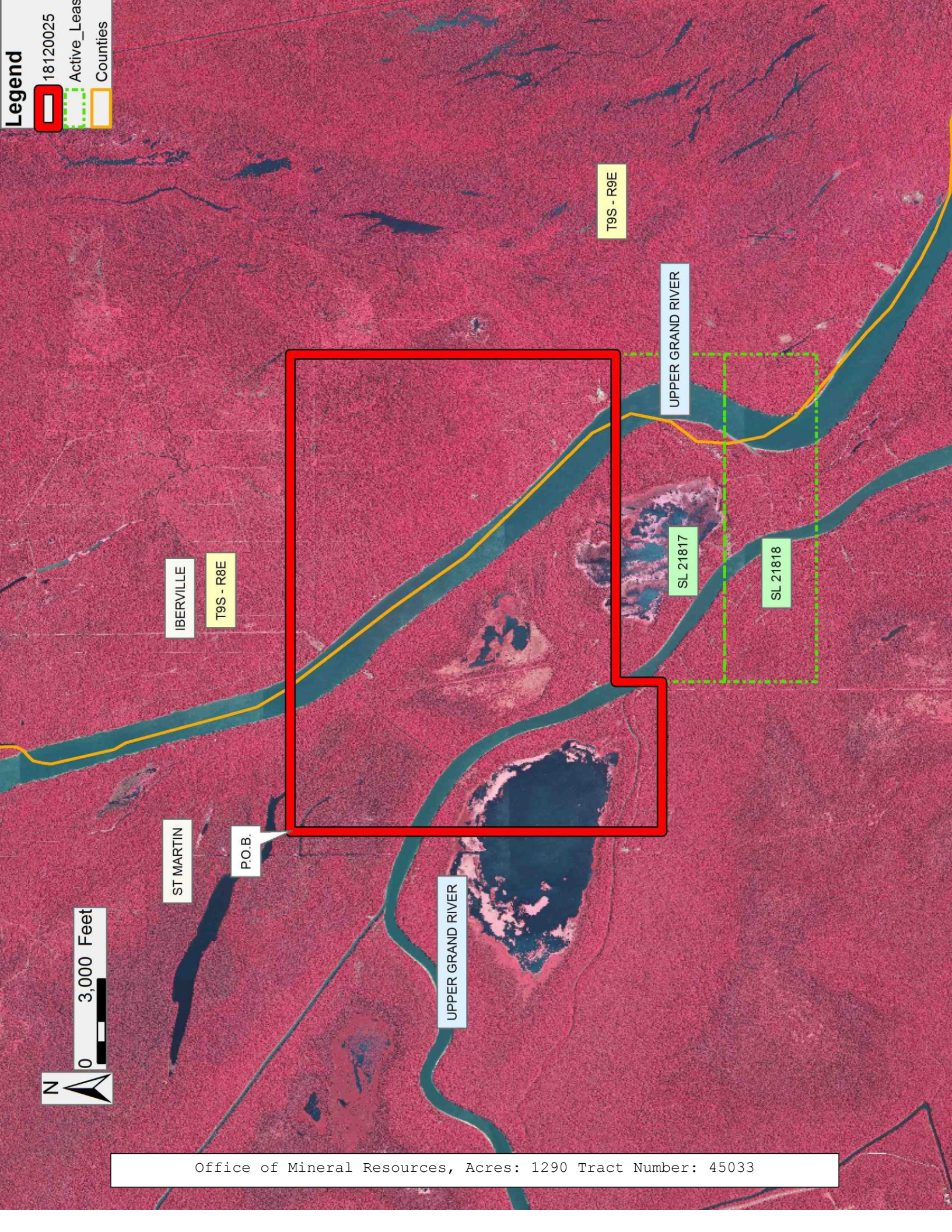
Applicant: THEOPHILUS OIL, GAS & LAND SERVICES, LLC

Bidder	Cash Payment	Price/Acre	Rental	Oil	Gas	Other



**Legend**

- 18120025
- Active\_Leas
- Counties



IBERVILLE

T9S - R8E

T9S - R9E

UPPER GRAND RIVER

SL 21817

SL 21818

ST MARTIN

P.O.B.

UPPER GRAND RIVER



Office of Mineral Resources, Acres: 1290 Tract Number: 45033



**TRACT 45034 - Iberville and St. Martin Parishes, Louisiana**

All of the lands now or formerly constituting the beds and bottoms of all water bodies of every nature and description as to which title is vested in the State of Louisiana, together with all islands arising therein and other lands formed by accretion or by reliction, where allowed by law, excepting tax adjudicated lands, and not presently under mineral lease on December 12, 2018, situated in Iberville and St. Martin Parishes, Louisiana, and more particularly described as follows: Beginning at the Southwest corner of State Lease No. 21818, having Coordinates of X = 1,910,155.37 and Y = 577,621.15; thence East 11,693.21 feet along the South line of said State Lease No. 21818, to its Southeast corner, having Coordinates of X = 1,921,848.58 and Y = 577,621.15; thence East 4,146.79 feet to a point having Coordinates of X = 1,925,995.37 and Y = 577,621.15; thence South 15,840.00 feet to a point having Coordinates of X = 1,925,995.37 and Y = 561,781.15; thence West 15,840.00 feet to a point having Coordinates of X = 1,910,155.37 and Y = 561,781.15; thence North 15,840.00 feet to the point of beginning, (This lease includes only waterbottoms claimed and owned by the state and specifically excludes any land which the state may claim or own and to which the mineral rights are vested in the state), containing approximately **656 acres**, all as more particularly outlined on a plat on file in the Office of Mineral Resources, Department of Natural Resources. All bearings, distances and coordinates are based on Louisiana Coordinate System of 1927, (North or South Zone), where applicable.

NOTE: The above description of the Tract nominated for lease has been provided and corrected, where required, exclusively by the nomination party. Any mineral lease selected from this Tract and awarded by the Louisiana State Mineral and Energy Board shall be without warranty of any kind, either express, implied, or statutory, including, but not limited to, the implied warranties of merchantability and fitness for a particular purpose. Should the mineral lease awarded by the Louisiana State Mineral and Energy Board be subsequently modified, cancelled or abrogated due to the existence of conflicting leases, operating agreements, private claims or other future obligations or conditions which may affect all or any portion of the leased Tract, it shall not relieve the Lessee of the obligation to pay any bonus due thereon to the Louisiana State Mineral and Energy Board, nor shall the Louisiana State Mineral and Energy Board be obligated to refund any consideration paid by the Lessor prior to such modification, cancellation, or abrogation, including, but not limited to, bonuses, rentals and royalties.

NOTE: This acreage is entirely within the boundary of the Atchafalaya Basin Legal Area.

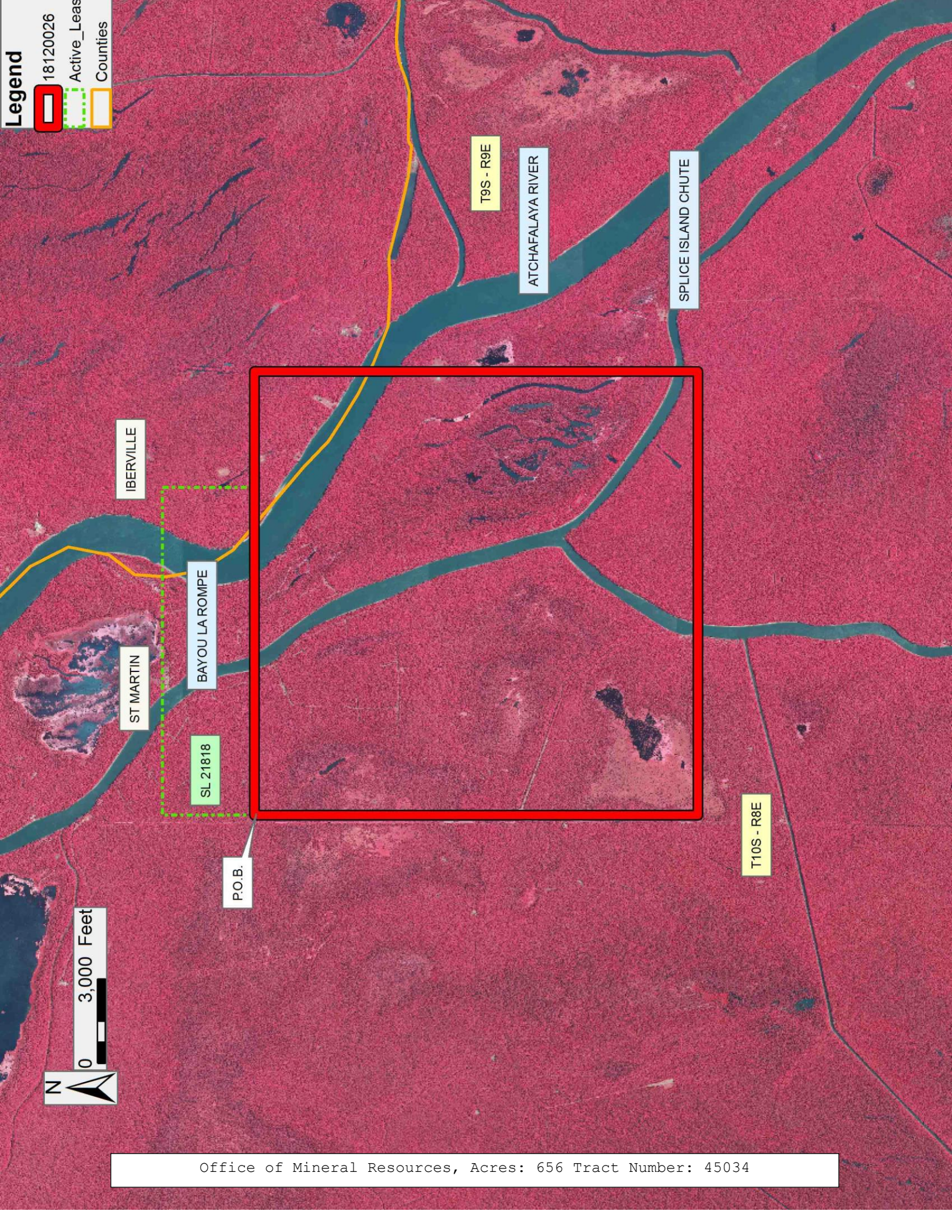
Applicant: THEOPHILUS OIL, GAS & LAND SERVICES, LLC

Bidder	Cash Payment	Price/Acre	Rental	Oil	Gas	Other



**Legend**

- 18120026
- Active\_Leas
- Counties



Office of Mineral Resources, Acres: 656 Tract Number: 45034



**TRACT 45035 - Jefferson Parish, Louisiana**

All of the lands now or formerly constituting the beds and bottoms of all water bodies of every nature and description as to which title is vested in the State of Louisiana, together with all islands arising therein and other lands formed by accretion or by reliction, where allowed by law, excepting tax adjudicated lands, and not presently under mineral lease on December 12, 2018, situated in Jefferson Parish, Louisiana, and more particularly described as follows: Beginning at a point having Coordinates of X = 2,419,318.55 and Y = 277,541.93; thence East 10,355.97 feet to a point having Coordinates of X = 2,429,674.52 and Y = 277,541.93; thence South 8,478.14 feet to a point having Coordinates of X = 2,429,674.52 and Y = 269,063.79; thence West 10,355.97 feet to a point having Coordinates of X = 2,419,318.55 and Y = 269,063.79; thence North 8,478.14 feet to the point of beginning, containing approximately **1,757 acres**, all as more particularly outlined on a plat on file in the Office of Mineral Resources, Department of Natural Resources. All bearings, distances and coordinates are based on Louisiana Coordinate System of 1927, (North or South Zone), where applicable.

NOTE: The above description of the Tract nominated for lease has been provided and corrected, where required, exclusively by the nomination party. Any mineral lease selected from this Tract and awarded by the Louisiana State Mineral and Energy Board shall be without warranty of any kind, either express, implied, or statutory, including, but not limited to, the implied warranties of merchantability and fitness for a particular purpose. Should the mineral lease awarded by the Louisiana State Mineral and Energy Board be subsequently modified, cancelled or abrogated due to the existence of conflicting leases, operating agreements, private claims or other future obligations or conditions which may affect all or any portion of the leased Tract, it shall not relieve the Lessee of the obligation to pay any bonus due thereon to the Louisiana State Mineral and Energy Board, nor shall the Louisiana State Mineral and Energy Board be obligated to refund any consideration paid by the Lessor prior to such modification, cancellation, or abrogation, including, but not limited to, bonuses, rentals and royalties.

NOTE: The State of Louisiana does hereby reserve, and this lease shall be subject to, the imprescriptible right of surface use in the nature of a servitude in favor of the Department of Natural Resources, including its Offices and Commissions, for the sole purpose of implementing, constructing, servicing and maintaining approved coastal zone management and/or restoration projects. Utilization of any and all rights derived under this lease by the mineral lessee, its agents, successors or assigns, shall not interfere with nor hinder the reasonable surface use by the Department of Natural Resources, its Offices or Commissions, as herein above reserved.

NOTE: This tract is located in an area designated by the Louisiana Legislature or the Wildlife and Fisheries Commission as a Public Oyster Seed Ground, Reservation, or area of Calcasieu or Sabine Lake. Proposed projects occurring in these areas will be evaluated on a case by case basis by Louisiana Department of Wildlife & Fisheries. Modifications to proposed



project features including, but not limited to, access routes, well sites, flowlines, and appurtenant structures maybe required by the Louisiana Department of Wildlife and Fisheries. In addition, compensatory mitigation will be required to offset unavoidable habitat impacts.

Applicant: CYPRESS ENERGY CORPORATION

Bidder	Cash Payment	Price/Acre	Rental	Oil	Gas	Other

Legend  
181200



0 2,000 Feet

JEFFERSON

T19S - R24E

P.O.B.



HACKBERRY BAY

Office of Mineral Resources, Acres: 1757 Tract Number: 45035



**TRACT 45036 - Jefferson and Plaquemines Parishes, Louisiana**

All of the lands now or formerly constituting the beds and bottoms of all water bodies of every nature and description as to which title is vested in the State of Louisiana, together with all islands arising therein and other lands formed by accretion or by reliction, where allowed by law, excepting tax adjudicated lands, and not presently under mineral lease on December 12, 2018, situated in Jefferson and Plaquemines Parishes, Louisiana, and more particularly described as follows: Beginning at a point having Coordinates of X = 2,429,674.52 and Y = 277,541.93; thence East 5,457.50 feet to the Northwest corner of State Lease No. 14534 having Coordinates of X = 2,435,132.02 and Y = 277,541.93; thence along the boundaries of said State Lease No. 14534 the following courses: South 2,702.53 feet to a point having Coordinates of X = 2,435,132.02 and Y = 274,839.40 and East 3,027.18 feet to its Southeast corner and the Southwest corner of State Lease No. 14374, as amended having Coordinates of X = 2,438,159.20 and Y = 274,839.40; thence continue East 1,005.63 feet along the south boundary of said State Lease No. 14374 to its Southeast corner and a point on the west boundary of State Lease No. 3035, as amended having Coordinates of X = 2,439,164.83 and Y = 274,839.40; thence South 00 degrees 41 minutes 53 seconds East 795.06 feet along the west boundary of said State Lease No. 3035 to its Southwest corner having Coordinates of X = 2,439,174.52 and Y = 274,044.39; thence South 8,382.63 feet to a point having Coordinates of X = 2,439,174.52 and Y = 265,661.77; thence West 9,500.00 feet to a point having Coordinates of X = 2,429,674.52 and Y = 265,661.77; thence North 11,880.17 feet to the point of beginning, containing approximately **2,319 acres**, all as more particularly outlined on a plat on file in the Office of Mineral Resources, Department of Natural Resources. All bearings, distances and coordinates are based on Louisiana Coordinate System of 1927, (North or South Zone), where applicable.

NOTE: The above description of the Tract nominated for lease has been provided and corrected, where required, exclusively by the nomination party. Any mineral lease selected from this Tract and awarded by the Louisiana State Mineral and Energy Board shall be without warranty of any kind, either express, implied, or statutory, including, but not limited to, the implied warranties of merchantability and fitness for a particular purpose. Should the mineral lease awarded by the Louisiana State Mineral and Energy Board be subsequently modified, cancelled or abrogated due to the existence of conflicting leases, operating agreements, private claims or other future obligations or conditions which may affect all or any portion of the leased Tract, it shall not relieve the Lessee of the obligation to pay any bonus due thereon to the Louisiana State Mineral and Energy Board, nor shall the Louisiana State Mineral and Energy Board be obligated to refund any consideration paid by the Lessor prior to such modification, cancellation, or abrogation, including, but not limited to, bonuses, rentals and royalties.

NOTE: The State of Louisiana does hereby reserve, and this lease shall be subject to, the imprescriptible right of surface use in the nature of a servitude in favor of the Department of Natural Resources, including its Offices and Commissions, for the sole purpose of implementing, constructing,

servicing and maintaining approved coastal zone management and/or restoration projects. Utilization of any and all rights derived under this lease by the mineral lessee, its agents, successors or assigns, shall not interfere with nor hinder the reasonable surface use by the Department of Natural Resources, its Offices or Commissions, as herein above reserved.

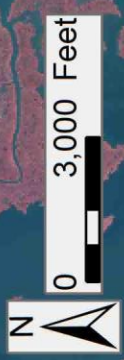
Applicant: CYPRESS ENERGY CORPORATION

Bidder	Cash Payment	Price/Acre	Rental	Oil	Gas	Other



**Legend**

- 18120027
- Active\_Leads
- Counties



Office of Mineral Resources, Acres: 2319 Tract Number: 45036