

**TRACT 45023 - Portion of Block 47, Ship Shoal Area, Terrebonne Parish, Louisiana**

The beds and bottoms of all water bodies belonging to the State of Louisiana located in Block 47, Ship Shoal Area, together with any present lands formed by accretion to the shoreline or islands formed therein, located in Terrebonne Parish, Louisiana, owned by and not presently under mineral lease as of December 12, 2018, from the State of Louisiana, the geographical area of which is more fully described as follows: Beginning at a point being the Southwest corner of State Lease No. 14792, as amended, having Coordinates of X = 2,135,250.00 and Y = 127,591.99, said point also being on the South line of Block 47, Ship Shoal Area; thence West 9,253.00 feet along said South line of said Block 47, Ship Shoal Area, to a point having Coordinates of X = 2,125,997.00 and Y = 127,591.99; thence North 11,909.43 feet to a point on the Louisiana Coastline, as decreed by the Supreme Court of the United States, as determined by a Special Master appointed therein, in litigation styled *United States v. State of Louisiana et al No. 9 Original*, in 1975, having Coordinates of X = 2,125,997.00 and Y = 139,501.42; thence along said Louisiana Coastline the following: Southeasterly along a straight line to a point having Coordinates of X = 2,126,697 and Y = 139,353; Southeasterly along a straight line to a point having Coordinates of X = 2,128,819 and Y = 138,694; Southeasterly along a straight line to a point having Coordinates of X = 2,133,089 and Y = 136,940; Southeasterly along a straight line to a point having Coordinates of X = 2,134,210 and Y = 136,726; and Southeasterly along a straight line to a point having Coordinates of X = 2,138,231 and Y = 136,387; thence South 4,404.32 feet to a point being on the Northern boundary of said State Lease No. 14792, as amended, having Coordinates of X = 2,138,231.00 and Y = 131,982.68; thence West 2,981.00 feet along said North line of said State Lease No. 14792, as amended, to its Northwest corner having Coordinates of X = 2,213,250.00 and Y = 131,982.68, said point also being on the Eastern boundary of State Lease No. 21634; thence along the boundary of said State Lease No. 21634 the following: North 840.08 feet to a point having Coordinates of X = 2,135,250.00 and Y = 132,822.76, West 750.00 feet to a point having Coordinates of X = 2,134,500.00 and Y = 132,822.76, South 14 degrees 03 minutes 49 seconds West feet 1,131.68 feet to a point having Coordinates of X = 2,134,225.00 and Y = 131,725.00, South 2,002.24 feet to a point having Coordinates of X = 2,134,225.00 and Y = 129,722.76, and East 1,025.00 feet to a point being its Southeast corner having Coordinates of X = 2,135,250.00 and Y = 129,722.76, said point also being on the Western boundary of said State Lease No. 14792, as amended; thence South 2,130.77 feet along said Western boundary of said State Lease No. 14792, as amended, to the to the point of beginning, containing approximately **2,444.75 acres**, all as more particularly outlined on a plat on file in the Office of Mineral Resources, Department of Natural Resources. All bearings, distances and coordinates are based on Louisiana Coordinate System of 1927, (North or South Zone).

NOTE: The above description of the Tract nominated for lease has been provided and corrected, where required, exclusively by the nomination party. Any mineral lease selected from this Tract and awarded by the Louisiana State

Mineral and Energy Board shall be without warranty of any kind, either express, implied, or statutory, including, but not limited to, the implied warranties of merchantability and fitness for a particular purpose. Should the mineral lease awarded by the Louisiana State Mineral and Energy Board be subsequently modified, cancelled or abrogated due to the existence of conflicting leases, operating agreements, private claims or other future obligations or conditions which may affect all or any portion of the leased Tract, it shall not relieve the Lessee of the obligation to pay any bonus due thereon to the Louisiana State Mineral and Energy Board, nor shall the Louisiana State Mineral and Energy Board be obligated to refund any consideration paid by the Lessor prior to such modification, cancellation, or abrogation, including, but not limited to, bonuses, rentals and royalties.

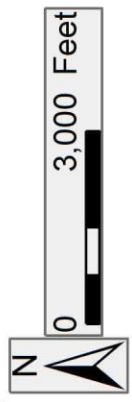
NOTE: The State of Louisiana does hereby reserve, and this lease shall be subject to, the imprescriptible right of surface use in the nature of a servitude in favor of the Department of Natural Resources, including its Offices and Commissions, for the sole purpose of implementing, constructing, servicing and maintaining approved coastal zone management and/or restoration projects. Utilization of any and all rights derived under this lease by the mineral lessee, its agents, successors or assigns, shall not interfere with nor hinder the reasonable surface use by the Department of Natural Resources, its Offices or Commissions, as herein above reserved.

Applicant: ROBERT A. SCHROEDER, INC.

Bidder	Cash Payment	Price/Acre	Rental	Oil	Gas	Other

**Legend**

- 18120009
- Blocks
- Active\_Leas



TERREBONNE

SS0047

SL 14792

SL 21634

P.O.B.

SS0064

SS0048

GULF OF MEXICO

SHIP SHOAL AREA

SS0063

**TRACT 45024 - Portion of Blocks 46, and 47, Ship Shoal Area, Terrebonne Parish, Louisiana**

The beds and bottoms of all water bodies belonging to the State of Louisiana located in Blocks 46, and 47, Ship Shoal Area, together with any present lands formed by accretion to the shoreline or islands formed therein, located in Terrebonne Parish, Louisiana, owned by and not presently under mineral lease as of December 12, 2018, from the State of Louisiana, the geographical area of which is more fully described as follows: Beginning at a point having Coordinates of X = 2,145,405.00 and Y = 127,591.99 said point being on the South line of Block 46, Ship Shoal Area; thence West 3,525.00 feet along said South line of said Block 46, Ship Shoal Area, to a point having Coordinates of X = 2,141,880.00 and Y = 127,591.99, said point being the Southeast corner of State Lease No. 14793, as amended; thence along the Eastern and Northern boundaries of said State Lease No. 14793, as amended, the following: North 400.00 feet to a point having Coordinates of X = 2,141,880.00 and Y = 127,991.99, and West 1,480.00 feet to a point being its Northwest corner having Coordinates of X = 2,140,400.00 and Y = 127,991.99, said point also being on the line common to Blocks 46 and 47, Ship Shoal Area; thence North 3,990.69 feet along said line common to said Blocks 46 and 47, Ship Shoal Area, to a point having Coordinates of X = 2,141,400.00 and Y = 131,982.68, said point being the Northeast corner of State Lease No. 14792, as amended; thence West 2,169.00 feet along the Northern boundary of said State Lease No. 14792, as amended, to a point having Coordinates of X = 2,138,231.00 and Y = 131,982.68; thence North 4,404.32 feet to a point on the Louisiana Coastline, as decreed by the Supreme Court of the United States, as determined by a Special Master appointed therein, in litigation styled *United States v. State of Louisiana et al No. 9 Original*, in 1975, having Coordinates of X = 2,138,231 and Y = 136,387; thence along said Louisiana Coastline the following: Southeasterly along a straight line to a point having Coordinates of X = 2,139,529 and Y = 136,276, Easterly along a straight line to a point having Coordinates of X = 2,143,589 and Y = 136,276, Northeasterly along a straight line to a point having Coordinates of X = 2,147,751 and Y = 136,599, Northeasterly along a straight line to a point having Coordinates of X = 2,148,929 and Y = 136.962, Southeasterly along a straight line to a point having Coordinates of X = 2,155,349 and Y = 135,847, and South 80 degrees 04 minutes 02 seconds East 660.91 feet to a point having Coordinates of X = 2,156,000.00 and Y = 135,733.00, said point being on the East line of said Block 46, Ship Shoal Area; thence South 2,964.52 along said East line of said Block 46, Ship Shoal Area, to a point having Coordinates of X = 2,156,000.00 and Y = 132,768.48, said point being the Northeast corner of State Lease No. 14157, as amended; thence North 65 degrees 46 minutes 56 seconds West 2,412.29 feet along the Northern boundary of said State Lease No. 14157, as amended, to a point having Coordinates of X = 2,153,800.01 and Y = 133,758.02, said point being a Southeast corner of State Lease No. 14311, as amended; thence North 814.77 feet along the Eastern boundary of said State Lease No. 14311, as amended, to a point being its Northeast corner having Coordinates of X = 2,153,800.01 and Y = 134.572.79, said point also being a southeast corner of State Lease No. 14310, as amended; thence along the Northern and Western boundaries of said State Lease No.

14310, as amended, the following: North 60 degrees 42 minutes 10 seconds West 3,325.34 feet to a point having Coordinates of X = 2,150,900.00 and Y = 136,200.01, South 84 degrees 40 minutes 04 seconds West 7,532.60 feet to a point having Coordinates of X = 2,143,400.00 and Y = 135,500.00, said point being the Northwest corner of said State Lease No. 14310, as amended, and South 927.22 feet to a point being its Southwest corner having Coordinates of X = 2,143,400.00 and Y = 134,572.78, said point also being the northwest corner of said State Lease No. 14311, as amended; thence South 66 degrees 41 minutes 52 seconds East 4,104.74 feet along the Southern boundary of said State Lease No. 14311, as amended, to a point having Coordinates of X = 2,147,169.92 and Y = 132,949.02, said point being a Northwest corner of State Lease No. 21702; thence along the Western, Southern and Eastern boundaries of said State Lease No. 21702 the following: South 70 degrees 05 minutes 14 seconds West 2,029.01 feet to a point having Coordinates of X = 2,145,262.22 and Y = 132,257.96, said point being the southwest corner of said State Lease No. 21702, South 58 degrees 01 minutes 24 seconds East 4,090.82 feet to a point having Coordinates of X = 2,148,732.31 and Y = 130,091.56, said point being the southeast corner of said State Lease No. 21702, and North 25 degrees 13 minutes 48 seconds East 2,255.96 feet to a point being its Northeast corner having Coordinates of X = 2,149,693.92 and Y = 132,132.31, said point also being on the southern boundary of said State Lease No. 14311, as amended; thence South 80 degrees 59 minutes 10 seconds East 2,822.95 feet along said Southern boundary of said State Lease No. 14311, as amended, to a point having Coordinates of X = 2,152,482.01 and Y = 131,690.03, said point being the southwest corner of said State Lease No. 14157, as amended; thence South 56 degrees 54 minutes 24 seconds East 4,199.17 feet along the Southern boundary of said State Lease No. 14157, as amended, to a point having Coordinates of X = 2,156,000.00 and Y = 129,397.26, said point being the southeast corner of said State Lease No. 14157, as amended, said point also being on said East line of said Block 46, Ship Shoal Area; thence South 1,805.26 feet along said East line of said Block 46, Ship Shoal Area, to a point having Coordinates of X = 2,156,000.00 and Y = 127,591.99, said point being the Southeast corner of said Block 46, Ship Shoal Area; thence West 10,595.00 feet along the South line of said Block 46, Ship Shoal Area, to the point of beginning, **LESS AND EXCEPT** all that portion of State Lease No. 21703 which lies entirely within the above described tract, being more fully described as follows: Commencing at a point being the point of beginning of the above described nominated tract having coordinates of X = 2,145,405.00 and Y = 127,591.99; thence North 26 degrees 53 minutes 53 seconds West 7,260.86 feet to a point being a point of beginning of said State Lease No. 21703 having Coordinates of X = 2,142,120.17 and Y = 134,067.33; thence along the boundary of said State Lease No. 21703 the following: South 74 degrees 32 minutes 17 seconds West 2,568.11 feet to a point having Coordinates of X = 2,139,645.00 and Y = 133,382.68, West 364.23 feet to a point having Coordinates of X = 2,139,280.77 and Y = 133,382.68; North 00 degrees 36 minutes 19 seconds East 1,407.43 feet to a point having Coordinates of X = 2,139,295.64 and Y = 134,790.03, North 75 degrees 53 minutes 36 seconds East 3,335.20 feet to a point having Coordinates of X = 2,142,530.26 and Y = 135,602.91, and South 14 degrees 57 minutes 09 seconds West 1,589.40 feet to

the point of beginning, the nominated tract containing approximately **2,215.96 acres**, all as more particularly outlined on a plat on file in the Office of Mineral Resources, Department of Natural Resources. All bearings, distances and coordinates are based on Louisiana Coordinate System of 1927, (North or South Zone).

NOTE: The above description of the Tract nominated for lease has been provided and corrected, where required, exclusively by the nomination party. Any mineral lease selected from this Tract and awarded by the Louisiana State Mineral and Energy Board shall be without warranty of any kind, either express, implied, or statutory, including, but not limited to, the implied warranties of merchantability and fitness for a particular purpose. Should the mineral lease awarded by the Louisiana State Mineral and Energy Board be subsequently modified, cancelled or abrogated due to the existence of conflicting leases, operating agreements, private claims or other future obligations or conditions which may affect all or any portion of the leased Tract, it shall not relieve the Lessee of the obligation to pay any bonus due thereon to the Louisiana State Mineral and Energy Board, nor shall the Louisiana State Mineral and Energy Board be obligated to refund any consideration paid by the Lessor prior to such modification, cancellation, or abrogation, including, but not limited to, bonuses, rentals and royalties.

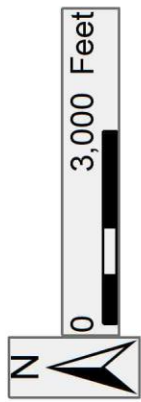
NOTE: The State of Louisiana does hereby reserve, and this lease shall be subject to, the imprescriptible right of surface use in the nature of a servitude in favor of the Department of Natural Resources, including its Offices and Commissions, for the sole purpose of implementing, constructing, servicing and maintaining approved coastal zone management and/or restoration projects. Utilization of any and all rights derived under this lease by the mineral lessee, its agents, successors or assigns, shall not interfere with nor hinder the reasonable surface use by the Department of Natural Resources, its Offices or Commissions, as herein above reserved.

Applicant: ROBERT A. SCHROEDER, INC.

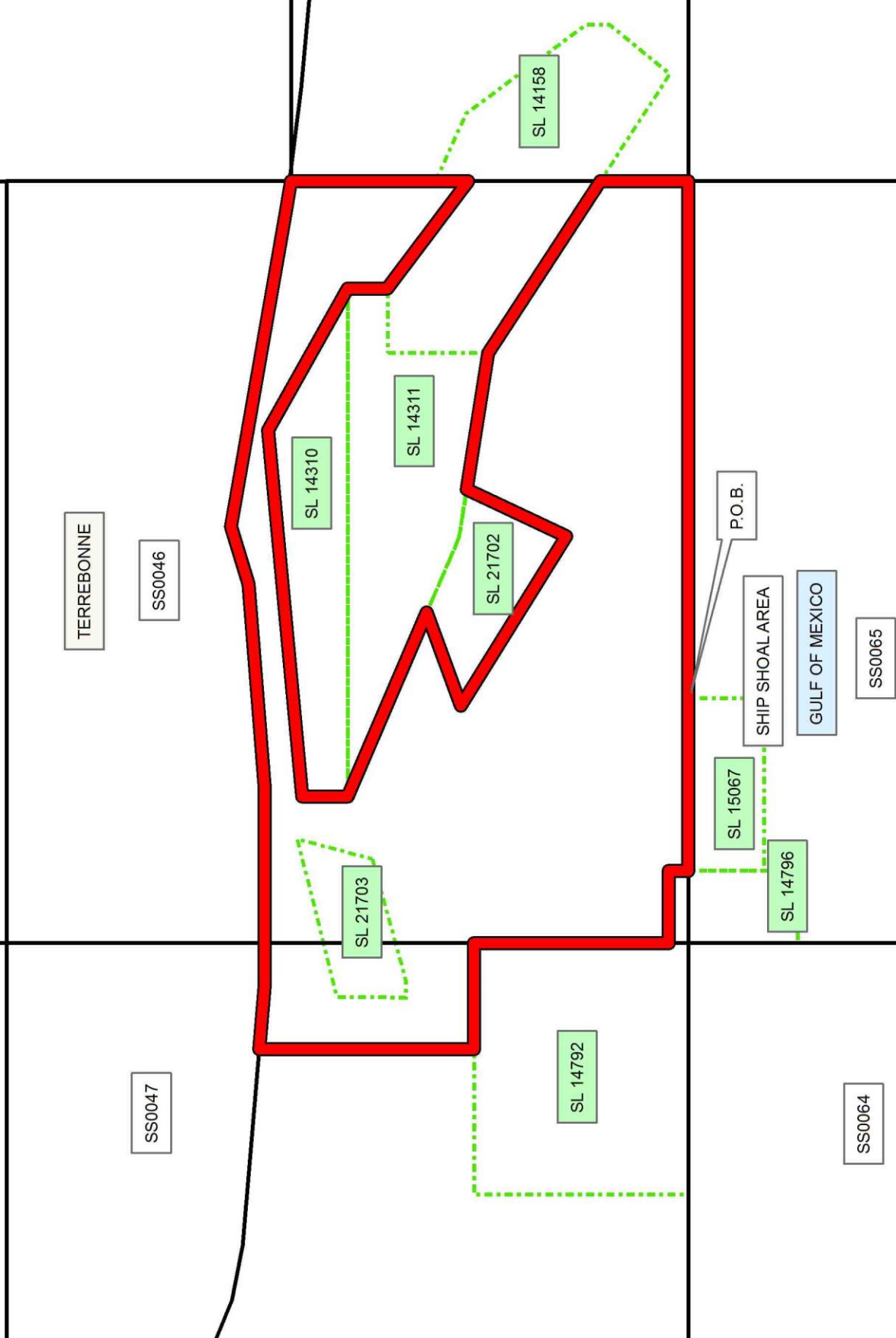
Bidder	Cash Payment	Price/Acre	Rental	Oil	Gas	Other

**Legend**

- 18120006
- Blocks
- Active\_Leas



Office of Mineral Resources, Acres: 2215.96 Tract Number: 45024



**TRACT 45025 - Portion of Block 64, Ship Shoal Area, Terrebonne Parish, Louisiana**

The beds and bottoms of all water bodies belonging to the State of Louisiana located in Block 64, Ship Shoal Area, together with any present lands formed by accretion to the shoreline or islands formed therein, located in Terrebonne Parish, Louisiana, owned by and not presently under mineral lease as of December 12, 2018, from the State of Louisiana, the geographical area of which is more fully described as follows: Beginning at a point being on the North line of Block 64, Ship Shoal Area, having Coordinates of X = 2,135,250.00 and Y = 127,591.99; thence East 3,850.00 feet along said North line of said Block 64, Ship Shoal Area, to a point being the Northwest corner of State Lease No. 14851, as amended, having Coordinates of X = 2,139,100.00 and Y = 127,591.99; thence along the Western and Southern boundaries of said State Lease No. 14851, as amended, the following courses: South 20 degrees 23 minutes 06 seconds West 4,632.11 feet to a point having Coordinates of X = 2,137,486.52 and Y = 123,249.97, and East 2,913.48 feet to a point being its Southeast corner having Coordinates of X = 2,140,400.00 and Y = 123,249.97, said point also being on the East line of said Block 64, Ship Shoal Area; thence South 5,214.97 feet along said East line of said Block 64, Ship Shoal Area, to a point being its Southeast corner having Coordinates of X = 2,140,400.00 and Y = 118,035.00, said point also being a point on the Three Mile Line, as decreed by the Supreme Court of the United States, as determined by a Special Master appointed therein, in litigation styled *United States v. State of Louisiana et al No. 9 Original*, in 1975; thence along said Three Mile Line the following courses: Southwesterly on a straight line to a point having Coordinates of X = 2,139,529 and Y = 118,035, Northwesterly on an arc having a radius of 18,240.60 feet and a center at X = 2,139,529 and Y = 136,276 to a point having Coordinates of X = 2,137,975 and Y = 118,102, Northwesterly on a straight line to a point having Coordinates of X = 2,136,677 and Y = 118,213, Northeasterly on an arc having a radius of 18,240.60 feet and a center at X = 2,138,231 and Y = 136,387 to a point having Coordinates of X = 2,134,698 and Y = 118,492, Northwesterly on an arc having a radius of 18,240.60 feet and a center at X = 2,134,210 and Y = 136,726 to a point having Coordinates of X = 2,130,790 and Y = 118,809, Northwesterly on a straight line to a point having Coordinates of X = 2,129,669 and Y = 119,023, and Northeasterly on an arc having a radius of 18,240.60 feet and a center at X = 2,133,089 and Y = 136,940 to a point having Coordinates of X = 2,128,797.00 and Y = 119,211.51; thence North 3,380.48 feet to a point having Coordinates of X = 2,128,797.00 and Y = 122,591.99; thence West 2,800.00 feet to a point having Coordinates of X = 2,125,997.00 and Y = 122,591.99; thence North 5,000.00 feet to a point having Coordinates of X = 2,125,997.00 and Y = 127,591.99, said point being on said North line of said Block 64, Ship Shoal Area; thence East 9,253.00 feet along said North line of said Block 64, Ship Shoal Area, to the point of beginning, **LESS AND EXCEPT** all that portion of State Lease No. 21635 which lies entirely within the above described tract, being more fully described as follows: Commencing at a point being the point of beginning of the above described nominated tract having coordinates of X = 2,135,250.00 and Y = 127,591.99; South 00 degrees 38 minutes 32 seconds East 4,559.24 feet to a point being



a point of beginning of said State Lease No. 21703 having Coordinates of X = 2,135,301.11 and Y = 123,033.04; thence South 07 degrees 39 minutes 47 seconds East 2,899.99 feet to a point having Coordinates of X = 2,135,687.81 and Y = 120,158.94; thence South 20 degrees 23 minutes 05 seconds West 200.00 feet to a point having Coordinates of X = 2,135,618.15 and Y = 119,971.47; thence West 715.00 feet to a point having Coordinates of X = 2,134,903.15 and Y = 119,971.47; thence North 10 degrees 37 minutes 23 seconds West 2,741.88 feet to a point having Coordinates of X = 2,134,397.70 and Y = 122,666.36; thence North 39 degrees 24 minutes 41 seconds East 400.00 feet to a point having Coordinates of X = 2,134,651.65 and Y = 122,975.40; thence North 84 degrees 55 minutes 42 seconds East 652.01 feet to the point of beginning, the nominated tract containing approximately **2,485.44 acres, LESS AND EXCEPT** that portion thereof, if any, lying seaward of the line three nautical miles from the coast line of Louisiana, as said three mile line has been decreed by the Supreme Court of the United States, as determined by a Special Master appointed therein, in litigation styled **United States v. State of Louisiana et al No. 9 Original**, in 1975, all as more particularly outlined on a plat in the Office of Mineral Resources, Department of Natural Resources. All bearings, distances and coordinates are based on the Louisiana Coordinate System of 1927, (South Zone).




NOTE: The above description of the Tract nominated for lease has been provided and corrected, where required, exclusively by the nomination party. Any mineral lease selected from this Tract and awarded by the Louisiana State Mineral and Energy Board shall be without warranty of any kind, either express, implied, or statutory, including, but not limited to, the implied warranties of merchantability and fitness for a particular purpose. Should the mineral lease awarded by the Louisiana State Mineral and Energy Board be subsequently modified, cancelled or abrogated due to the existence of conflicting leases, operating agreements, private claims or other future obligations or conditions which may affect all or any portion of the leased Tract, it shall not relieve the Lessee of the obligation to pay any bonus due thereon to the Louisiana State Mineral and Energy Board, nor shall the Louisiana State Mineral and Energy Board be obligated to refund any consideration paid by the Lessor prior to such modification, cancellation, or abrogation, including, but not limited to, bonuses, rentals and royalties.

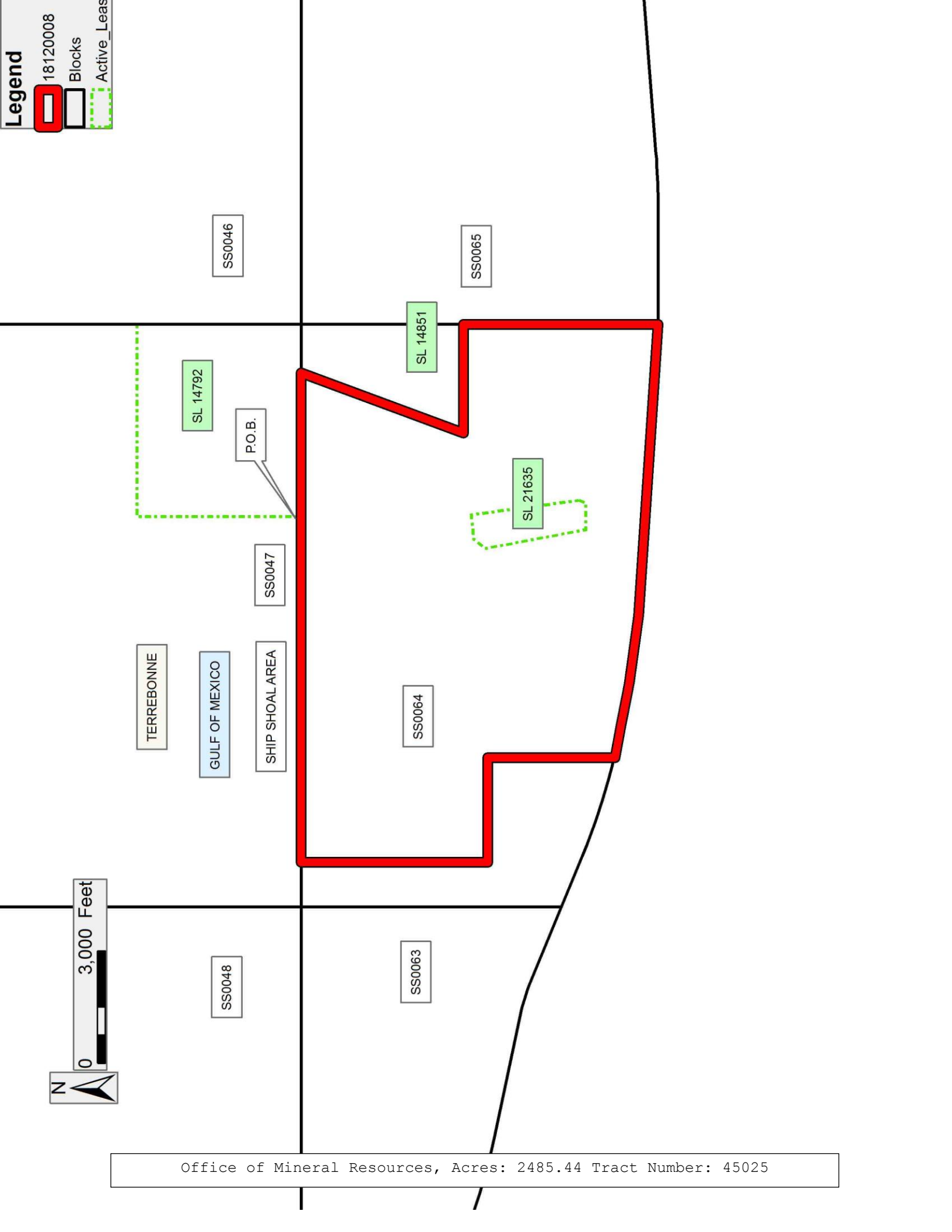
NOTE: The State of Louisiana does hereby reserve, and this lease shall be subject to, the imprescriptible right of surface use in the nature of a servitude in favor of the Department of Natural Resources, including its Offices and Commissions, for the sole purpose of implementing, constructing, servicing and maintaining approved coastal zone management and/or restoration projects. Utilization of any and all rights derived under this lease by the mineral lessee, its agents, successors or assigns, shall not interfere with nor hinder the reasonable surface use by the Department of Natural Resources, its Offices or Commissions, as herein above reserved.

Applicant: ROBERT A. SCHROEDER, INC.

Bidder	Cash Payment	Price/Acre	Rental	Oil	Gas	Other

**Legend**

-  18120008
-  Blocks
-  Active\_Leads



SS00046

SS00065

SL 14792

SL 14851

P.O.B.

SL 21635

SS00047

TERREBONNE

GULF OF MEXICO

SHIP SHOAL AREA

SS00064

0 3,000 Feet

SS00048

SS00063

**TRACT 45026 - Portion of Block 65, Ship Shoal Area, Terrebonne Parish, Louisiana**

The beds and bottoms of all water bodies belonging to the State of Louisiana located in Block 65, Ship Shoal Area, together with any present lands formed by accretion to the shoreline or islands formed therein, located in Terrebonne Parish, Louisiana, owned by and not presently under mineral lease as of December 12, 2018, from the State of Louisiana, the geographical area of which is more fully described as follows: Beginning at a point having Coordinates of X = 2,145,405.00 and Y = 127,591.99 said point being on the North line of Block 65, Ship Shoal Area, said point also being the northeast corner of State Lease No. 15067; thence East 7,077.01 feet along said North line of said Block 65, Ship Shoal Area, to a point having Coordinates of X = 2,152,482.01 and Y = 127,591.99; thence South 3,800.00 feet to a point on the Northern boundary of State Lease No. 14571, as amended, having Coordinates of X = 2,152,482.01 and Y = 123,791.99; thence along the boundary of said State Lease No. 14571, as amended, the following: West 1,082.01 feet to a point having Coordinates of X = 2,151,400.00 and Y = 123,791.99, South 2,805.78 feet to a point having Coordinates of X = 2,151,400.00 and Y = 120,986.21, and South 51 degrees 55 minutes 06 seconds East 1,374.62 feet to a point having Coordinates of X = 2,152,482.01 and Y = 120,138.37; thence South 2,305.31 feet to a point on the Three Mile Line, as decreed by the Supreme Court of the United States, as determined by a Special Master appointed therein, in litigation styled *United States v. State of Louisiana et al No. 9 Original*, in 1975, having Coordinates of X = 2,152,482.01 and Y = 117,833.06; thence along said Three Mile Line the following courses: Northwesterly on an arc having a radius of 18,240.60 feet and a center at X = 2,155,349 and Y = 135,847 to a point having Coordinates of X = 2,149,793 and Y = 118,473, Southwesterly on an arc having a radius of 18,240.60 feet and a center at X = 2,147,751 and Y = 136,599 to a point having Coordinates of X = 2,149,162 and Y = 118,413, Southwesterly on a straight line to a point having Coordinates of X = 2,145,000 and Y = 118,090, Southwesterly on an arc having a radius of 18,240.60 feet and a center at X = 2,143,589 and Y = 136,276 to a point having Coordinates of X = 2,143,589 and Y = 118,035, and West 3,189.00 feet on a straight line to a point having Coordinates of X = 2,140,400.00 and Y = 118,035.00, said point being on the West line of said Block 65, Ship Shoal Area; thence North 7,316.99 feet along said West line of said Block 65, Ship Shoal Area to a point having Coordinates of X = 2,140,400.00 and Y = 125,351.99, said point being the southwest corner of State Lease No. 14796, as amended; thence along the boundary of said State Lease No. 14796, as amended, the following courses: East 1,480.00 feet to a point having Coordinates of X = 2,141,880.00 and Y = 125,351.99, said point being the Southeast corner of said State Lease No. 14796, as amended, and North 690.00 feet to a point having Coordinates of X = 2,141,880.00 and Y = 126,041.99, said point being the Southwest corner of said State Lease No. 15067; thence along the boundary of said State Lease No. 15067 the following courses: East 3,525.00 feet to a point having Coordinates of X = 2,145,405.00 and Y = 126,041.99, said point being the Southeast corner of said State Lease No. 15067, and North 1,550.00 feet to the point of beginning, containing approximately **2,336.78 acres, LESS AND EXCEPT** that portion thereof, if any,

lying seaward of the line three nautical miles from the coast line of Louisiana, as said three mile line has been decreed by the Supreme Court of the United States, as determined by a Special Master appointed therein, in litigation styled **United States v. State of Louisiana et al No. 9 Original**, in 1975, all as more particularly outlined on a plat in the Office of Mineral Resources, Department of Natural Resources. All bearings, distances and coordinates are based on the Louisiana Coordinate System of 1927, (South Zone).

NOTE: The above description of the Tract nominated for lease has been provided and corrected, where required, exclusively by the nomination party. Any mineral lease selected from this Tract and awarded by the Louisiana State Mineral and Energy Board shall be without warranty of any kind, either express, implied, or statutory, including, but not limited to, the implied warranties of merchantability and fitness for a particular purpose. Should the mineral lease awarded by the Louisiana State Mineral and Energy Board be subsequently modified, cancelled or abrogated due to the existence of conflicting leases, operating agreements, private claims or other future obligations or conditions which may affect all or any portion of the leased Tract, it shall not relieve the Lessee of the obligation to pay any bonus due thereon to the Louisiana State Mineral and Energy Board, nor shall the Louisiana State Mineral and Energy Board be obligated to refund any consideration paid by the Lessor prior to such modification, cancellation, or abrogation, including, but not limited to, bonuses, rentals and royalties.

NOTE: The State of Louisiana does hereby reserve, and this lease shall be subject to, the imprescriptible right of surface use in the nature of a servitude in favor of the Department of Natural Resources, including its Offices and Commissions, for the sole purpose of implementing, constructing, servicing and maintaining approved coastal zone management and/or restoration projects. Utilization of any and all rights derived under this lease by the mineral lessee, its agents, successors or assigns, shall not interfere with nor hinder the reasonable surface use by the Department of Natural Resources, its Offices or Commissions, as herein above reserved.

Applicant: ROBERT A. SCHROEDER, INC.

Bidder	Cash Payment	Price/Acre	Rental	Oil	Gas	Other

**Legend**

- 18120007
- Wildlife
- Blocks
- Tracts
- Active\_Leas



TERREBONNE

SS0046

P.O.B.

SL 14796

SL 15067

SS0065

GULF OF MEXICO

SL 14851

SS0064

SHIP SHOAL AREA

SL 14571

Office of Mineral Resources, Acres: 2336.78 Tract Number: 45026