

TRACT 44802 - Lafourche Parish, Louisiana

All of the lands now or formerly constituting the beds and bottoms of all water bodies of every nature and description as to which title is vested in the State of Louisiana, together with all islands arising therein and other lands formed by accretion or by reliction, where allowed by law, excepting tax adjudicated lands, and not presently under mineral lease on December 13, 2017, situated in Lafourche Parish, Louisiana, and more particularly described as follows: Beginning at a point having Coordinates of X = 2,334,336.97 and Y = 210,256.59; thence North 87 degrees 11 minutes 02 seconds East 17,919.66 feet to a point having Coordinates of X = 2,352,234.99 and Y = 211,137.04; thence South 02 degrees 48 minutes 59 seconds East 5,828.33 feet to a point having Coordinates of X = 2,352,521.35 and Y = 205,315.75; thence West 2,296.35 feet to a point having Coordinates of X = 2,350,225.00 and Y = 205,315.75; thence South 00 degrees 07 minutes 15 seconds West 3,638.79 feet to a point having Coordinates of X = 2,350,217.32 and Y = 201,676.97; thence South 88 degrees 32 minutes 02 seconds West 15,443.92 feet to a point having Coordinates of X = 2,334,778.46 and Y = 201,281.82; thence North 02 degrees 48 minutes 59 seconds West 8,985.63 feet to the point of beginning, (This lease includes only waterbottoms claimed and owned by the state and specifically excludes any land which the state may claim or own and to which the mineral rights are vested in the state), containing approximately **2,499 acres**, all as more particularly outlined on a plat on file in the Office of Mineral Resources, Department of Natural Resources. All bearings, distances and coordinates are based on Louisiana Coordinate System of 1927, (North or South Zone), where applicable.

NOTE: The above description of the Tract nominated for the purpose of acquiring a mineral lease or a geophysical agreement has been provided and corrected, where required, exclusively by the nominating party. Any mineral lease or geophysical agreement selected from this Tract and awarded by the Louisiana State Mineral and Energy Board shall be without warranty of any kind, either express, implied or statutory including, but not limited to, title or the implied warranties of merchantability and fitness for a particular purpose.

An error or omission in the nominating party's Tract description may require that a State mineral lease or geophysical agreement be modified, canceled or abrogated due to the existence of conflicting leases, operating agreements, private claims or other future obligations or conditions within the Tract described. In such case, however, the Louisiana State Mineral and Energy Board shall not be obligated to refund any consideration paid by the Lessee prior to such modification, cancellation or abrogation including, but not limited to, bonuses, rentals and royalties.

NOTE: The State of Louisiana does hereby reserve, and this lease shall be subject to, the imprescriptible right of surface use in the nature of a servitude in favor of the Department of Natural Resources, including its

Offices and Commissions, for the sole purpose of implementing, constructing, servicing and maintaining approved coastal zone management and/or restoration projects. Utilization of any and all rights derived under this lease by the mineral lessee, its agents, successors or assigns, shall not interfere with nor hinder the reasonable surface use by the Department of Natural Resources, its Offices or Commissions, as herein above reserved.

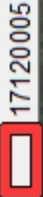
Applicant: GRAY PRODUCTION COMPANY

Bidder	Cash Payment	Price/ Acre	Rental	Oil	Gas	Other



0 5,000 Feet

Legend



LITTLE LAKE

LAFOURCHE

P.O.B.

T21S - R22E

HACKBERRY BAY

TIMBALIER BAY

TRACT 44803 - Portion of Blocks 113, and 114, South Timbalier Area, Revised, Terrebonne Parish, Louisiana

All of the lands now or formerly constituting the beds and bottoms of all water bodies of every nature and description as to which title is vested in the State of Louisiana, together with all islands arising therein and other lands formed by accretion or by reliction, where allowed by law, excepting tax adjudicated lands, and not presently under mineral lease on December 13, 2017, situated in Terrebonne Parish, Louisiana, and more particularly described as follows: Beginning at a point having Coordinates of X = 2,225,658.20 and Y = 184,160.33, said point being on the Eastern boundary of State Lease No. 199, as amended; thence along said Eastern boundary of said State Lease No. 199, as amended, the following courses: North 00 degrees 20 minutes 05 seconds West 4,921.03 feet to a point having Coordinates of X = 2,225,629.46 and Y = 189,081.28, South 89 degrees 39 minutes 55 seconds West 5,280.00 feet to a point having Coordinates of X = 2,220,349.55 and Y = 189,050.43, and North 00 degrees 20 minutes 05 seconds West 5,280.00 feet to a point having Coordinates of X = 2,220,318.70 and Y = 194,330.34; thence North 89 degrees 39 minutes 55 seconds East 10,419.87 feet to a point having Coordinates of X = 2,230,738.39 and Y = 194,391.22; thence South 00 degrees 20 minutes 05 seconds East 10,201.04 feet to a point having Coordinates of X = 2,230,797.98 and Y = 184,190.36; thence South 89 degrees 39 minutes 55 seconds West 5,139.87 feet to the point of beginning, containing approximately **1,806 acres**, all as more particularly outlined on a plat on file in the Office of Mineral Resources, Department of Natural Resources. All bearings, distances and coordinates are based on Louisiana Coordinate System of 1927, (North or South Zone), where applicable.

NOTE: The above description of the Tract nominated for the purpose of acquiring a mineral lease or a geophysical agreement has been provided and corrected, where required, exclusively by the nominating party. Any mineral lease or geophysical agreement selected from this Tract and awarded by the Louisiana State Mineral and Energy Board shall be without warranty of any kind, either express, implied or statutory including, but not limited to, title or the implied warranties of merchantability and fitness for a particular purpose.

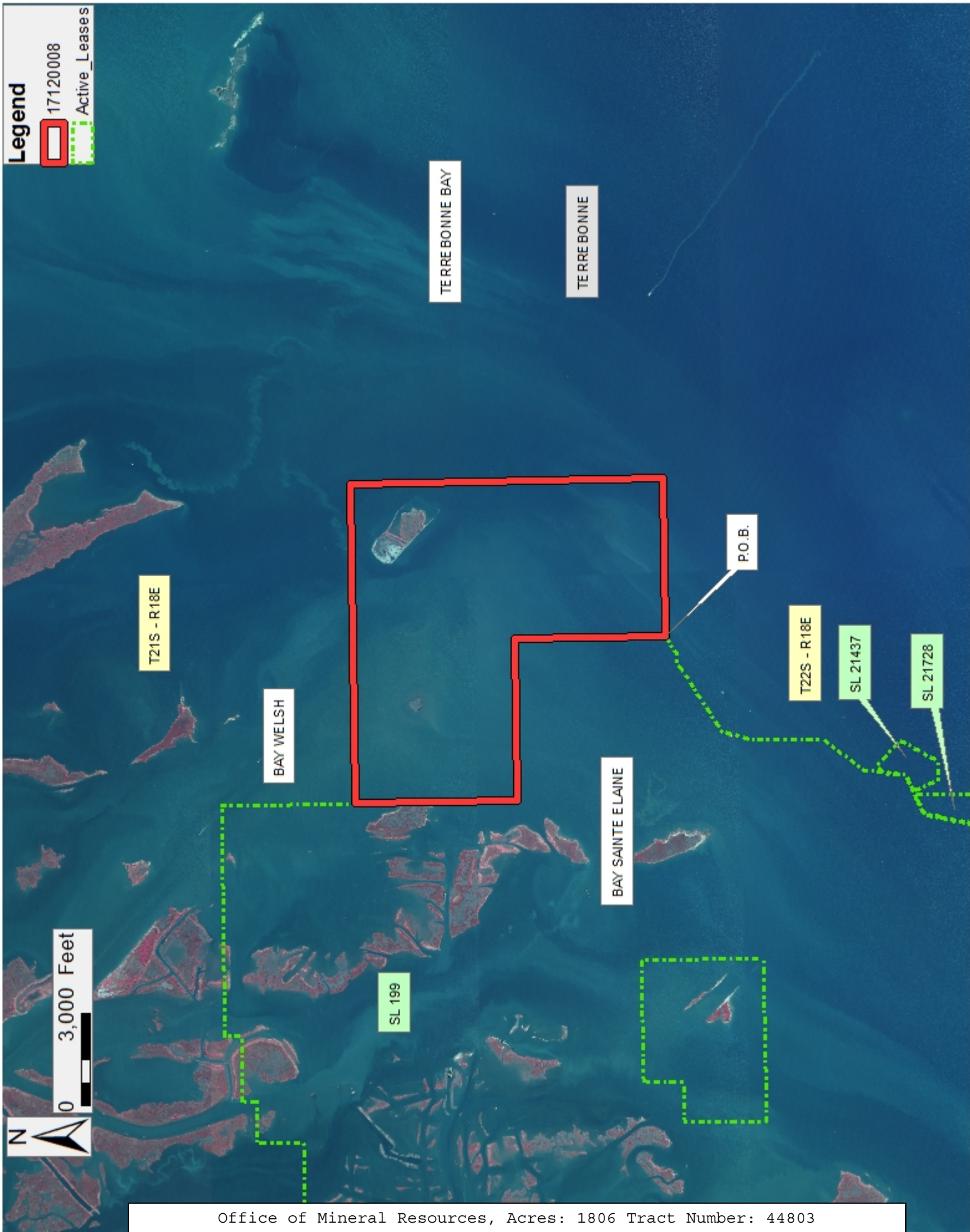
An error or omission in the nominating party's Tract description may require that a State mineral lease or geophysical agreement be modified, canceled or abrogated due to the existence of conflicting leases, operating agreements, private claims or other future obligations or conditions within the Tract described. In such case, however, the Louisiana State Mineral and Energy Board shall not be obligated to refund any consideration paid by the Lessee prior to such modification, cancellation or abrogation including, but not limited to, bonuses, rentals and royalties.

NOTE: The State of Louisiana does hereby reserve, and this lease shall be subject to, the imprescriptible right of surface use in the nature of a servitude in favor of the Department of Natural Resources, including its Offices and Commissions, for the sole purpose of implementing, constructing, servicing and maintaining approved coastal zone management and/or restoration projects. Utilization of any and all rights derived under this lease by the mineral lessee, its agents, successors or assigns, shall not interfere with nor hinder the reasonable surface use by the Department of Natural Resources, its Offices or Commissions, as herein above reserved.

NOTE: It appears, according to our records, that a portion of this Tract is located within the restrictive safety fairway area as set out by the Corps of Engineers, U.S. Army and/or the restrictive anchorage area as set out by the U.S. Coast Guard.

Applicant: ROBERT A. SCHROEDER, INC.

Bidder	Cash Payment	Price/ Acre	Rental	Oil	Gas	Other



TRACT 44804 - Portion of Blocks 113, 114, and 118, South Timbalier Area, Revised, Terrebonne Parish, Louisiana

All of the lands now or formerly constituting the beds and bottoms of all water bodies of every nature and description as to which title is vested in the State of Louisiana, together with all islands arising therein and other lands formed by accretion or by reliction, where allowed by law, excepting tax adjudicated lands, and not presently under mineral lease on December 13, 2017, situated in Terrebonne Parish, Louisiana, and more particularly described as follows: Beginning at a point having Coordinates of X = 2,221,190.83 and Y = 173,215.08, said point being the Northwest corner of State Lease No. 21109; thence South 89 degrees 39 minutes 53 seconds West 748.77 feet to a point having Coordinates of X = 2,220,442.07 and Y = 173,210.70, said point being the Southeast corner of said State Lease No. 21728; thence North 00 degrees 21 minutes 25 seconds West approximately 2,900 feet along the Eastern boundary of said State Lease No. 21728, to a point being the Northeast corner of said State Lease No. 21728, said point also being on the Eastern boundary of State Lease No. 199, as amended; thence North 65 degrees 13 minutes 40 seconds East approximately 100 feet along said Eastern boundary of said State Lease No. 199, as amended, to a point having Coordinates of X = 2,220,515.12 and Y = 176,152.05, said point being on the Western boundary of State Lease No. 21437; thence along the Western, Southern, Eastern and Northern boundaries of said State Lease No. 21437 the following courses: South 22 degrees 39 minutes 43 seconds East 869.15 feet to a point having Coordinates of X = 2,220,850.00 and Y = 175,350.00, South 88 degrees 11 minutes 46 seconds East 635.31 feet to a point having Coordinates of X = 2,221,485.00 and Y = 175,330.00, North 28 degrees 56 minutes 09 seconds East 1,405.45 feet to a point having Coordinates of X = 2,222,165.00 and Y = 176,560.00, North 47 degrees 02 minutes 20 seconds West 1,093.17 feet to a point having Coordinates of X = 2,221,365.00 and Y = 177,305.00, and South 43 degrees 02 minutes 45 seconds West 360.13 feet to a point having Coordinates of X = 2,221,119.18 and Y = 177,041.82, said point being on said Eastern boundary of said State Lease No. 199, as amended; thence along said Eastern boundary of said State Lease No. 199, as amended, the following courses: North 07 degrees 04 minutes 55 seconds East 702.76 feet to a point having Coordinates of X = 2,221,205.82 and Y = 177,739.21; North 37 degrees 39 minutes 55 seconds East 950.00 feet to a point having Coordinates of X = 2,221,786.32 and Y = 178,491.23, North 36 degrees 39 minutes 55 seconds East 815.00 feet to a point having Coordinates of X = 2,222,272.99 and Y = 179,144.97, North 02 degrees 20 minutes 05 seconds West 395.00 feet to a point having Coordinates of X = 2,222,256.89 and Y = 179,539.64, North 00 degrees 20 minutes 05 seconds West 1,950.00 feet to a point having Coordinates of X = 2,222,245.50 and Y = 181,489.61, North 17 degrees 19 minutes 55 seconds East 871.00 feet to a point having Coordinates of X = 2,222,504.98 and Y = 182,321.06, North 57 degrees 41 minutes 55 seconds East 2,761.19 feet to a point having Coordinates of X = 2,224,838.87 and Y = 183,796.57, North 89 degrees 39 minutes 54 seconds East 246.23

feet to a point having Coordinates of X = 2,225,085.10 and Y = 183,798.01; and North 57 degrees 41 minutes 54 seconds East 678.03 feet to a point having Coordinates of X = 2,225,658.20 and Y = 184,160.33, thence North 89 degrees 39 minutes 55 seconds East 5,139.87 feet to a point having Coordinates of X = 2,230,797.98 and Y = 184,190.36; thence South 00 degrees 20 minutes 05 seconds East 10,918.97 feet to a point having Coordinates of X = 2,230,861.77 and Y = 173,271.58; thence North 89 degrees 39 minutes 55 seconds West 5,139.87 feet to a point having Coordinates of X = 2,225,721.99 and Y = 173,241.55, said point being the Northeast corner of said State Lease No. 21109; thence North 89 degrees 39 minutes 55 seconds West 4,531.24 feet along the Northern boundary of said State Lease No. 21109 to the point of beginning, containing approximately **2,211 acres**, all as more particularly outlined on a plat on file in the Office of Mineral Resources, Department of Natural Resources. All bearings, distances and coordinates are based on Louisiana Coordinate System of 1927, (North or South Zone), where applicable.

NOTE: The above description of the Tract nominated for the purpose of acquiring a mineral lease or a geophysical agreement has been provided and corrected, where required, exclusively by the nominating party. Any mineral lease or geophysical agreement selected from this Tract and awarded by the Louisiana State Mineral and Energy Board shall be without warranty of any kind, either express, implied or statutory including, but not limited to, title or the implied warranties of merchantability and fitness for a particular purpose.

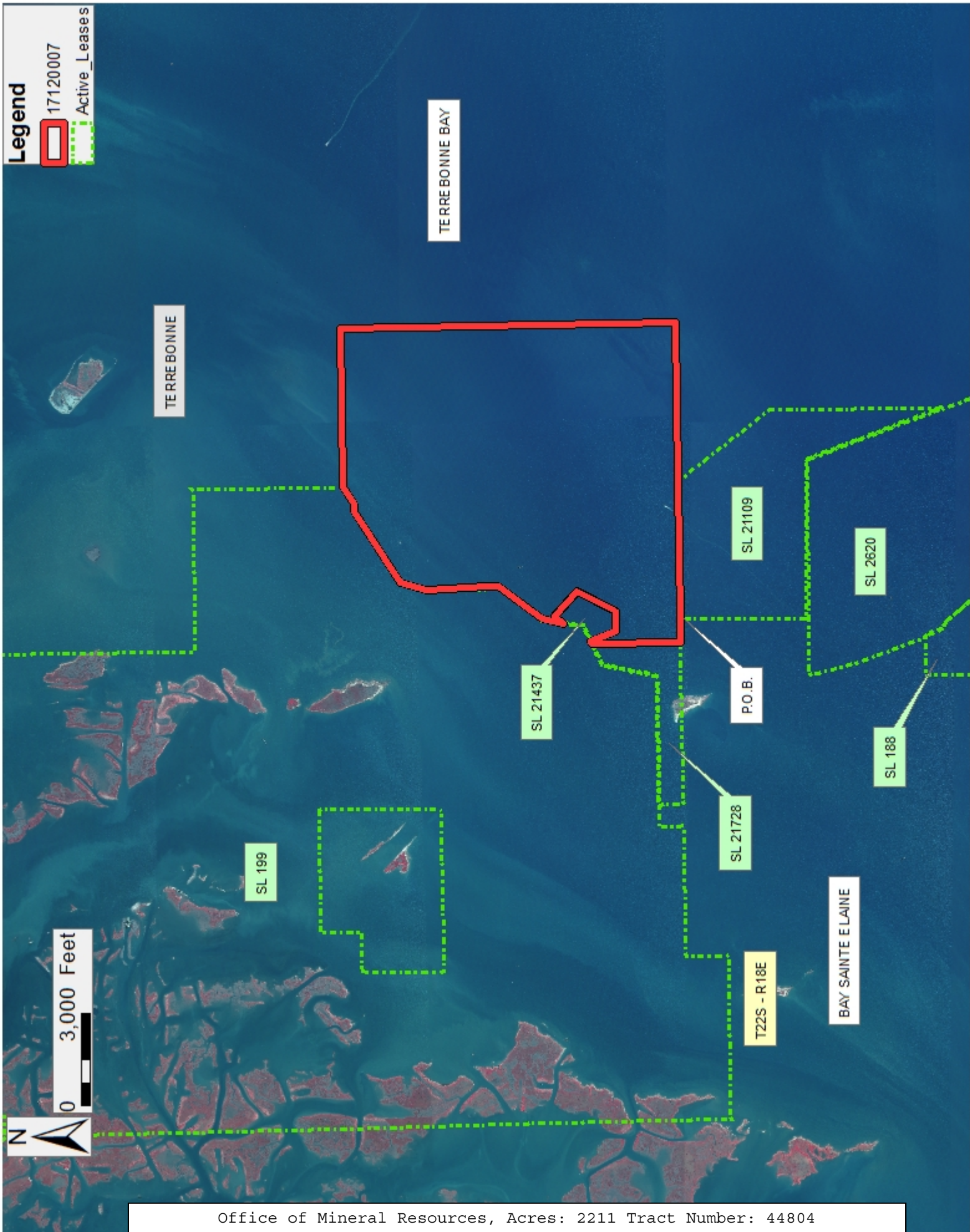
An error or omission in the nominating party's Tract description may require that a State mineral lease or geophysical agreement be modified, canceled or abrogated due to the existence of conflicting leases, operating agreements, private claims or other future obligations or conditions within the Tract described. In such case, however, the Louisiana State Mineral and Energy Board shall not be obligated to refund any consideration paid by the Lessee prior to such modification, cancellation or abrogation including, but not limited to, bonuses, rentals and royalties.

NOTE: The State of Louisiana does hereby reserve, and this lease shall be subject to, the imprescriptible right of surface use in the nature of a servitude in favor of the Department of Natural Resources, including its Offices and Commissions, for the sole purpose of implementing, constructing, servicing and maintaining approved coastal zone management and/or restoration projects. Utilization of any and all rights derived under this lease by the mineral lessee, its agents, successors or assigns, shall not interfere with nor hinder the reasonable surface use by the Department of Natural Resources, its Offices or Commissions, as herein above reserved.

NOTE: It appears, according to our records, that a portion of this Tract is located within the restrictive safety fairway area as set out by the Corps of Engineers, U.S. Army and/or the restrictive anchorage area as set out by the U.S. Coast Guard.

Applicant: ROBERT A. SCHROEDER, INC.

Bidder	Cash Payment	Price/ Acre	Rental	Oil	Gas	Other



TRACT 44805 - Portion of Blocks 113, and 119, South Timbalier Area, Revised, Terrebonne Parish, Louisiana

All of the lands now or formerly constituting the beds and bottoms of all water bodies of every nature and description as to which title is vested in the State of Louisiana, together with all islands arising therein and other lands formed by accretion or by reliction, where allowed by law, excepting tax adjudicated lands, and not presently under mineral lease on December 13, 2017, situated in Terrebonne Parish, Louisiana, and more particularly described as follows: Beginning at a point having Coordinates of X = 2,221,190.83 and Y = 173,215.08, said point being the Northwest corner of State Lease No. 21109; thence South 00 degrees 14 minutes 24 seconds West 4,148.79 feet along the Western boundary of said State Lease No. 21109 to a point having Coordinates of X = 2,221,173.46 and Y = 169,066.33, said point being the Southwest corner of said State Lease No. 21109, said point also being on the Northern boundary of State Lease No. 2620, as amended; thence along the Northern and Western boundaries of said State Lease No. 2620, as amended, the following courses: West approximately 1,809 feet to a point being the Northwest corner of said State Lease No. 2620, as amended, and Southeasterly approximately 4,011 feet to a point having Coordinates of X = 2,220,542.06 and Y = 165,249.28, said point being on the Northern boundary of State Lease No. 188, as amended; thence South 89 degrees 39 minutes 56 seconds West 1,271.57 feet along said Northern boundary of State Lease No. 188, as amended, to a point having Coordinates of X = 2,219,270.51 and Y = 165,241.83, said point being the Northwest corner of State Lease No. 188, as amended; thence South 89 degrees 57 minutes 01 seconds West 9,018.51 feet to a point having Coordinates of X = 2,210,252.00 and Y = 165,234.00; thence North approximately 6,543 feet to a point on the southern boundary of State Lease No. 199, as amended; thence along said Southern boundary of said State Lease No. 199, as amended, the following courses: Northerly approximately 1,400 feet, Easterly approximately 4,212 feet to a point having Coordinates of X = 2,214,464.00 and Y = 173,173.00; North 00 degrees 20 minutes 05 seconds West 800.00 feet to a point having Coordinates of X = 2,214,459.33 and Y = 173,972.99; and North 89 degrees 39 minutes 55 seconds East 697.80 feet to a point having Coordinates of X = 2,215,157.12 and Y = 173,977.06, said point being the Westernmost Northwest corner of State Lease No. 21728; thence along the Western and Southern boundaries of said State Lease No. 21728, the following courses: South 00 degrees 20 minutes 05 seconds East 799.68 feet to a point having Coordinates of X = 2,215,162.18 and Y = 173,177.40, and North 89 degrees 38 minutes 19 seconds East 5,280.00 feet to a point having Coordinates of X = 2,220,442.07 and Y = 173,210.70, said point being the Southeast corner of said State Lease No. 21728; thence North 89 degrees 39 minutes 53 seconds East 748.77 feet to the point of beginning, containing approximately **1,900 acres**, all as more particularly outlined on a plat on file in the Office of Mineral Resources, Department of Natural Resources. All bearings, distances and coordinates are based on Louisiana Coordinate System of 1927, (North or South Zone), where applicable.

NOTE: The above description of the Tract nominated for the purpose of acquiring a mineral lease or a geophysical agreement has been provided and corrected, where required, exclusively by the nominating party. Any mineral lease or geophysical agreement selected from this Tract and awarded by the Louisiana State Mineral and Energy Board shall be without warranty of any kind, either express, implied or statutory including, but not limited to, title or the implied warranties of merchantability and fitness for a particular purpose.

An error or omission in the nominating party's Tract description may require that a State mineral lease or geophysical agreement be modified, canceled or abrogated due to the existence of conflicting leases, operating agreements, private claims or other future obligations or conditions within the Tract described. In such case, however, the Louisiana State Mineral and Energy Board shall not be obligated to refund any consideration paid by the Lessee prior to such modification, cancellation or abrogation including, but not limited to, bonuses, rentals and royalties.

NOTE: The State of Louisiana does hereby reserve, and this lease shall be subject to, the imprescriptible right of surface use in the nature of a servitude in favor of the Department of Natural Resources, including its Offices and Commissions, for the sole purpose of implementing, constructing, servicing and maintaining approved coastal zone management and/or restoration projects. Utilization of any and all rights derived under this lease by the mineral lessee, its agents, successors or assigns, shall not interfere with nor hinder the reasonable surface use by the Department of Natural Resources, its Offices or Commissions, as herein above reserved.

Applicant: ROBERT A. SCHROEDER, INC.

Bidder	Cash Payment	Price/ Acre	Rental	Oil	Gas	Other

