

**TRACT 44634 - Terrebonne Parish, Louisiana**

All of the lands now or formerly constituting the beds and bottoms of all water bodies of every nature and description as to which title is vested in the State of Louisiana, together with all islands arising therein and other lands formed by accretion or by reliction, where allowed by law, excepting tax adjudicated lands, and not presently under mineral lease on December 14, 2016, situated in Terrebonne Parish, Louisiana, and more particularly described as follows: Beginning at a point having Coordinates of X = 2,050,439.66 and Y = 255,194.30; thence East 12,260.28 feet to a point having Coordinates of X = 2,062,699.94 and Y = 255,194.30; thence South 7,225.53 feet to a point on the Northern boundary of State Lease No. 19290, having Coordinates of X = 2,062,699.94 and Y = 247,968.77; thence along the boundary of said State Lease No. 19290 the following courses and distances: West 3,104.08 feet to a point having Coordinates of X = 2,059,595.86 and Y = 247,968.77, South 1,443.58 feet to a point having Coordinates of X = 2,059,595.86 and Y = 246,525.19 and East 3,104.08 feet to a point having Coordinates of X = 2,062,699.94 and Y = 246,525.19; thence South approximately 724 feet to a point on the boundary of Operating Agreement No. A0327, also being the North corner of State Lease No. 18677, as amended, having a Coordinate of X = 2,062,699; thence Northwesterly, Westerly and Northeasterly along the boundary of said Operating Agreement No. A0327 to a point of intersection with a line having a Coordinate of X = 2,060,780.30 and South approximately 1,049 feet to a point having Coordinates of X = 2,060,780.30 and Y = 245,019.89; thence West 10,340.64 feet to a point having Coordinates of X = 2,050,439.66 and Y = 245,019.89; thence North 10,174.41 feet to the point of beginning, **LESS AND EXCEPT** any portion of Operating Agreement No. A0327 that may lie within the above described tract, containing approximately **1,441 acres**, all as more particularly outlined on a plat on file in the Office of Mineral Resources, Department of Natural Resources. All bearings, distances and coordinates are based on Louisiana Coordinate System of 1927, (North or South Zone), where applicable.

NOTE: The above description of the Tract nominated for the purpose of acquiring a mineral lease or a geophysical agreement has been provided and corrected, where required, exclusively by the nominating party. Any mineral lease or geophysical agreement selected from this Tract and awarded by the Louisiana State Mineral and Energy Board shall be without warranty of any kind, either express, implied or statutory including, but not limited to, title or the implied warranties of merchantability and fitness for a particular purpose.

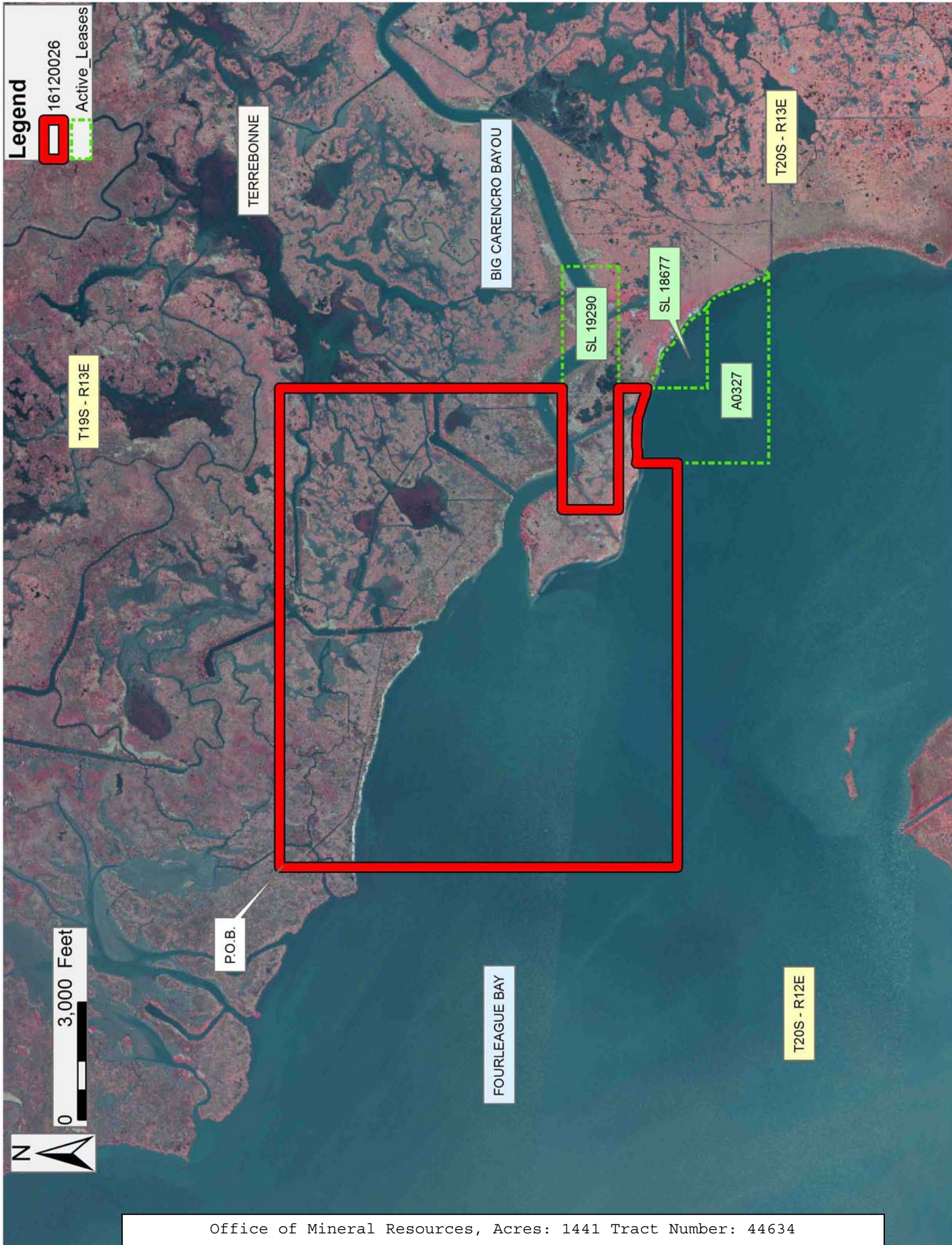
An error or omission in the nominating party's Tract description may require that a State mineral lease or geophysical agreement be modified, canceled or abrogated due to the existence of conflicting leases, operating agreements, private claims or other future obligations or conditions within the Tract described. In such case, however, the Louisiana State Mineral and Energy Board shall not be obligated to refund any consideration paid by the Lessee prior to such modification,

cancellation or abrogation including, but not limited to, bonuses, rentals and royalties.

NOTE: The State of Louisiana does hereby reserve, and this lease shall be subject to, the imprescriptible right of surface use in the nature of a servitude in favor of the Department of Natural Resources, including its Offices and Commissions, for the sole purpose of implementing, constructing, servicing and maintaining approved coastal zone management and/or restoration projects. Utilization of any and all rights derived under this lease by the mineral lessee, its agents, successors or assigns, shall not interfere with nor hinder the reasonable surface use by the Department of Natural Resources, its Offices or Commissions, as herein above reserved.

Applicant: THEOPHILUS OIL, GAS & LAND SERVICES, LLC

Bidder	Cash Payment	Price/Acre	Rental	Oil	Gas	Other



Legend

16120026  
Active\_Leases

T19S - R13E

TERREBONNE

BIG CARENCRO BAYOU

T20S - R13E

SL 19290

SL 18677

A0327

0 3,000 Feet

P.O.B.

FOURLEAGUE BAY

T20S - R12E

**TRACT 44635 - Terrebonne Parish, Louisiana**

All of the lands now or formerly constituting the beds and bottoms of all water bodies of every nature and description as to which title is vested in the State of Louisiana, together with all islands arising therein and other lands formed by accretion or by reliction, where allowed by law, excepting tax adjudicated lands, and not presently under mineral lease on December 14, 2016, situated in Terrebonne Parish, Louisiana, and more particularly described as follows: Beginning at a point having Coordinates of X = 2,062,699.94 and Y = 255,194.30; thence East 17,458.78 feet to a point having Coordinates of X = 2,080,158.72 and Y = 255,194.30; thence South 18,480.00 feet to a point having Coordinates of X = 2,080,158.72 and Y = 236,714.30; thence West 16,759.97 feet to the Southeast corner of State Lease No. 21611, also being the Northeast corner of State Lease No. 21613, having Coordinates of X = 2,063,398.75 and Y = 236,714.30; thence along said boundary of said State Lease No. 21611 the following courses and distances: North 30 degrees 52 minutes 46 seconds West 1,272.85 feet to a point having Coordinates of X = 2,062,745.48 and Y = 237,806.72 and North 54 degrees 45 minutes 11 seconds West 1,306.23 feet to its Northwest corner, also being the Northeast corner of State Lease No, 21612, having Coordinates of X = 2,061,678.72 and Y = 238,560.55; thence North 4,128.14 feet to a point on the Southern boundary of Operating Agreement No. A0327, as amended, having Coordinates of X = 2,061,678.72 and Y = 242,688.69; thence East approximately 4,023 feet along said boundary of said Operating Agreement A0327 to its Southeast corner, also being a point of intersection on the shoreline of Four League Bay, having a Coordinate of Y = 242,688.69; thence Northwesterly along said boundary of said Operating Agreement No. A0327 and said shoreline, to the Southeast corner of State Lease No. 18677, having a Coordinate of Y = 244,252.48; thence Northwesterly along said boundary of said State Lease No. 18677 and said shoreline to a point of intersection with a North/South line having a Coordinate of X = 2,062,699.94; thence North approximately 724 feet to a point on the Southern boundary of State Lease No. 19290 having Coordinates of X = 2,062,699.94 and Y = 246,525.19; thence East 3,117.06 feet along said boundary of said State Lease No. 19290 to its Southeast corner, also being the a point on the boundary of State Lease No. 19978, as amended, having Coordinates of X = 2,065,817.00 and Y = 246,525.19; thence along the boundary of said State Lease No. 19978 the following courses and distances: East 164.79 feet to a point having Coordinates of X = 2,065,981.79 and Y = 246,525.19, South 542.39 feet to a point having Coordinates of X = 2,065,981.79 and Y = 245,982.80, North 89 degrees 33 minutes 41 seconds East 78.51 feet to a point having Coordinates of X = 2,066,060.30 and Y = 245,983.40, North 1,985.29 feet to a point having Coordinates of X = 2,066,060.30 and Y = 247,968.69, and West 243.30 feet to its Northwest corner, also being the Northeast corner of said State Lease No. 19290, having Coordinates of X = 2,065,817.00 and Y = 247,968.69; thence West 3,117.06 feet along the boundary of said State Lease No. 19290, to a point having Coordinates of X = 2,062,699.94 and Y = 247,968.77; thence North 7,225.53 feet to the point of beginning, **LESS AND EXCEPT** any portion of said State Lease No.18677 that may lie within the

above described tract and **LESS AND EXCEPT** all that portion of Operating Agreement No. 357 that lies entirely within the above described tract, and **LESS AND EXCEPT** any right, title, and interest in lands owned by and not under lease from the State of Louisiana, on behalf of the Terrebonne Parish School Board, situated in Section 16, Township 20 South, Range 13 East, Terrebonne Parish, Louisiana, contained within the above described tract, containing approximately **1,518 acres**, all as more particularly outlined on a plat on file in the Office of Mineral Resources, Department of Natural Resources. All bearings, distances and coordinates are based on Louisiana Coordinate System of 1927, (North or South Zone), where applicable.

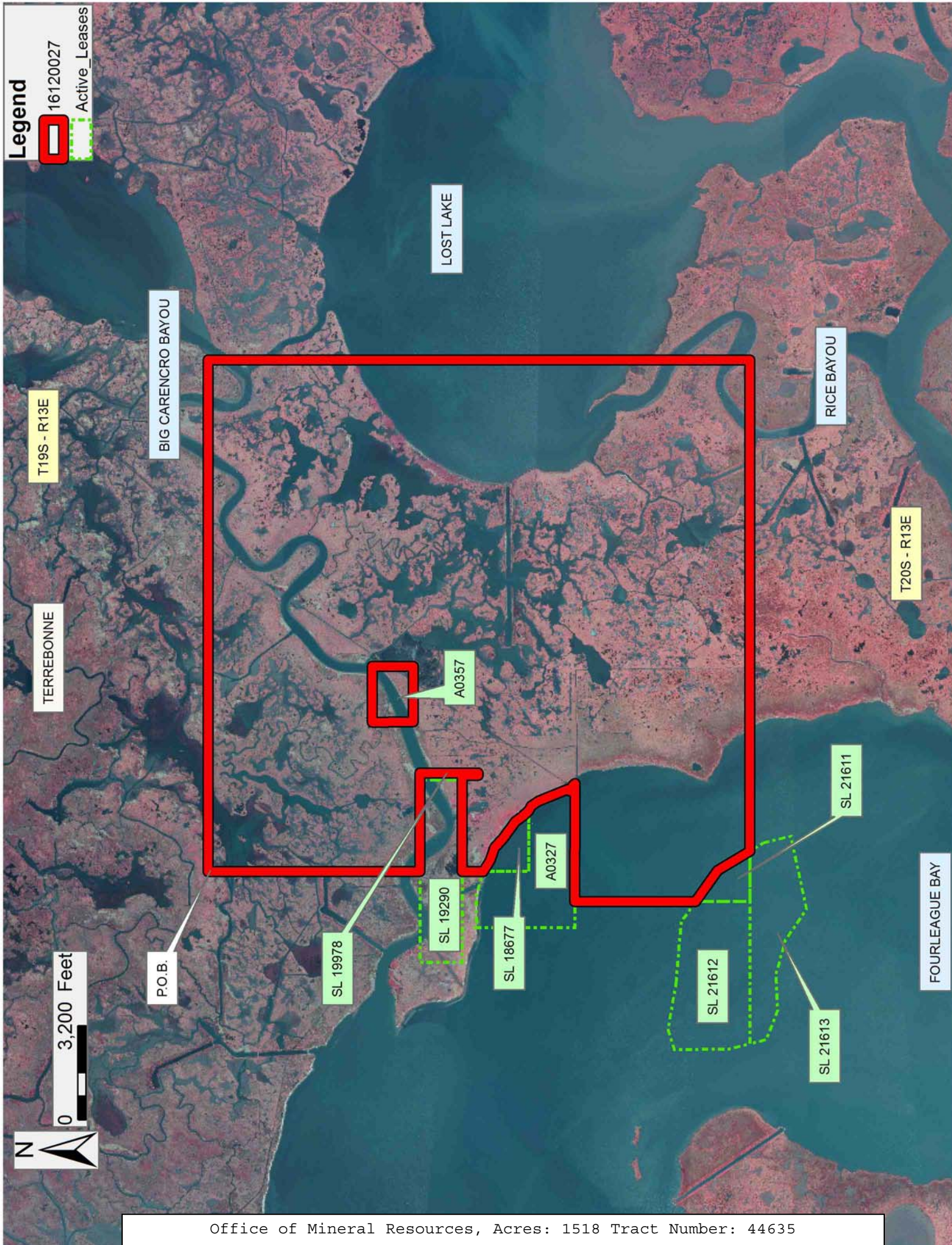
NOTE: The above description of the Tract nominated for the purpose of acquiring a mineral lease or a geophysical agreement has been provided and corrected, where required, exclusively by the nominating party. Any mineral lease or geophysical agreement selected from this Tract and awarded by the Louisiana State Mineral and Energy Board shall be without warranty of any kind, either express, implied or statutory including, but not limited to, title or the implied warranties of merchantability and fitness for a particular purpose.

An error or omission in the nominating party's Tract description may require that a State mineral lease or geophysical agreement be modified, canceled or abrogated due to the existence of conflicting leases, operating agreements, private claims or other future obligations or conditions within the Tract described. In such case, however, the Louisiana State Mineral and Energy Board shall not be obligated to refund any consideration paid by the Lessee prior to such modification, cancellation or abrogation including, but not limited to, bonuses, rentals and royalties.

NOTE: The State of Louisiana does hereby reserve, and this lease shall be subject to, the imprescriptible right of surface use in the nature of a servitude in favor of the Department of Natural Resources, including its Offices and Commissions, for the sole purpose of implementing, constructing, servicing and maintaining approved coastal zone management and/or restoration projects. Utilization of any and all rights derived under this lease by the mineral lessee, its agents, successors or assigns, shall not interfere with nor hinder the reasonable surface use by the Department of Natural Resources, its Offices or Commissions, as herein above reserved.

Applicant: THEOPHILUS OIL, GAS & LAND SERVICES, LLC

Bidder	Cash Payment	Price/Acre	Rental	Oil	Gas	Other



**Legend**

16120027  
Active\_Leases

LOST LAKE

BIG CARENCRO BAYOU

RICE BAYOU

T19S - R13E

T20S - R13E

TERREBONNE

SL 21611

FOURLEAGUE BAY

A0357

SL 19290

SL 19978

SL 18677

A0327

SL 21612

SL 21613

P.O.B.

0 3,200 Feet



**TRACT 44636 - Terrebonne Parish, Louisiana**

All of the lands now or formerly constituting the beds and bottoms of all water bodies of every nature and description as to which title is vested in the State of Louisiana, together with all islands arising therein and other lands formed by accretion or by reliction, where allowed by law, excepting tax adjudicated lands, and not presently under mineral lease on December 14, 2016, situated in Terrebonne Parish, Louisiana, and more particularly described as follows: Beginning at a point having Coordinates of X = 2,202,325.00 and Y = 245,674.00; thence North 7,495.00 feet to a point having Coordinates of X = 2,202,325.00 and Y = 253,169.00; thence East 18,500.00 feet to a point having Coordinates of X = 2,220,825.00 and Y = 253,169.00; thence South 7,495.00 feet to a point having Coordinates of X = 2,220,825.00 and Y = 245,674.00; thence West 18,500.00 feet to the to the point of beginning, **LESS AND EXCEPT** all that portion of State Lease No. 21662 which lies entirely within the above described tract, being more fully described as follows: Commencing at a point being the point of beginning of the above described nominated tract having Coordinates of X = 2,202,325.00 and Y = 245,674.00; thence North 81 degrees 56 minutes 25 seconds East 9,550.33 feet to a point being the point of beginning of said State Lease No. 21662 having Coordinates of X = 2,211,781.00 and Y = 247,013.00; thence North 00 degrees 20 minutes 55 seconds West 822.02 feet to a point having Coordinates of X = 2,211,776.00 and Y = 247,835.00; thence North 63 degrees 15 minutes 47 seconds East 2,980.69 feet to a point having Coordinates of X = 2,214,438.00 and Y = 249,176.00; thence North 69 degrees 21 minutes 11 seconds East 221.21 feet to a point having Coordinates of X = 2,214,645.00 and Y = 249,254.00; thence North 06 degrees 34 minutes 55 seconds East 209.38 feet to a point having Coordinates of X = 2,214,669.00 and Y = 249,462.00; thence North 88 degrees 46 minutes 29 seconds East 187.04 feet to a point having Coordinates of X = 2,214,856.00 and Y = 249,466.00; thence South 03 degrees 39 minutes 08 seconds West 141.29 feet to a point having Coordinates of X = 2,214,847.00 and Y = 249,325.00; thence North 68 degrees 31 minutes 29 seconds East 620.05 feet to a point having Coordinates of X = 2,215,424.00 and Y = 249,552.00; thence South 78 degrees 41 minutes 24 seconds East 1,060.60 feet to a point having Coordinates of X = 2,216,464.00 and Y = 249,344.00; thence South 16 degrees 10 minutes 11 seconds East 456.04 feet to a point having Coordinates of X = 2,216,591.00 and Y = 248,906.00; thence South 75 degrees 36 minutes 58 seconds West 2,197.90 feet to a point having Coordinates of X = 2,214,462.00 and Y = 248,360.00; thence South 63 degrees 19 minutes 26 seconds West 3,000.36 feet to the point of beginning, the nominated tract containing approximately **1,800 acres**, all as more particularly outlined on a plat on file in the Office of Mineral Resources, Department of Natural Resources. All bearings, distances and coordinates are based on Louisiana Coordinate System of 1927, (North or South Zone), where applicable.

NOTE: The above description of the Tract nominated for the purpose of acquiring a mineral lease or a geophysical agreement has been provided and



corrected, where required, exclusively by the nominating party. Any mineral lease or geophysical agreement selected from this Tract and awarded by the Louisiana State Mineral and Energy Board shall be without warranty of any kind, either express, implied or statutory including, but not limited to, title or the implied warranties of merchantability and fitness for a particular purpose.

An error or omission in the nominating party's Tract description may require that a State mineral lease or geophysical agreement be modified, canceled or abrogated due to the existence of conflicting leases, operating agreements, private claims or other future obligations or conditions within the Tract described. In such case, however, the Louisiana State Mineral and Energy Board shall not be obligated to refund any consideration paid by the Lessee prior to such modification, cancellation or abrogation including, but not limited to, bonuses, rentals and royalties.

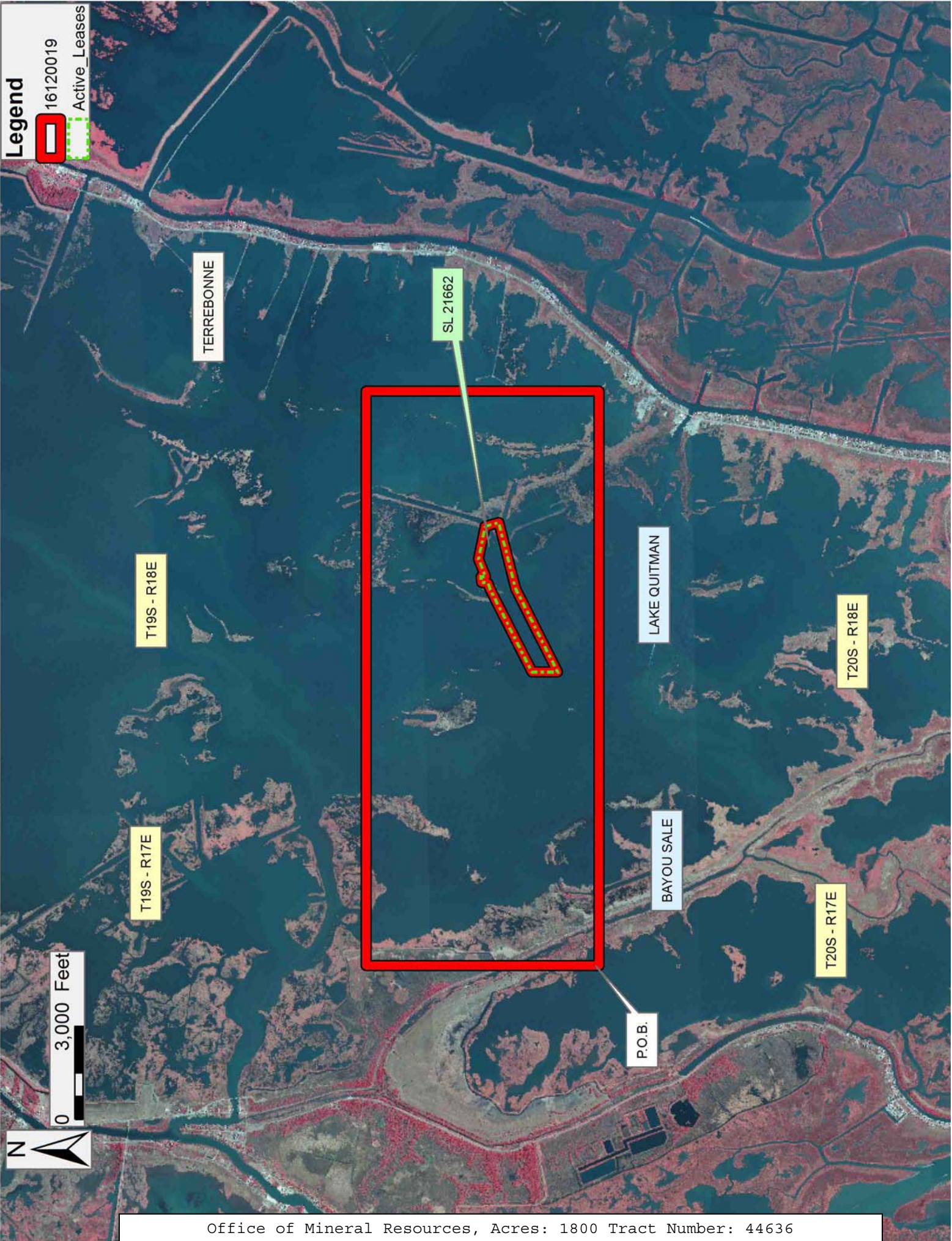
NOTE: The State of Louisiana does hereby reserve, and this lease shall be subject to, the imprescriptible right of surface use in the nature of a servitude in favor of the Department of Natural Resources, including its Offices and Commissions, for the sole purpose of implementing, constructing, servicing and maintaining approved coastal zone management and/or restoration projects. Utilization of any and all rights derived under this lease by the mineral lessee, its agents, successors or assigns, shall not interfere with nor hinder the reasonable surface use by the Department of Natural Resources, its Offices or Commissions, as herein above reserved.

Applicant: ROBERT A. SCHROEDER, INC

Bidder	Cash Payment	Price/Acre	Rental	Oil	Gas	Other

**Legend**

16120019  
Active\_Leases



TERREBONNE

SL 21662

T19S - R18E

LAKE QUITMAN

T20S - R18E

T19S - R17E

BAYOU SALE

T20S - R17E

0 3,000 Feet



P.O.B.

**TRACT 44637 - Terrebonne Parish, Louisiana**

All of the lands now or formerly constituting the beds and bottoms of all water bodies of every nature and description as to which title is vested in the State of Louisiana, together with all islands arising therein and other lands formed by accretion or by reliction, where allowed by law, excepting tax adjudicated lands, and not presently under mineral lease on December 14, 2016, situated in Terrebonne Parish, Louisiana, and more particularly described as follows: Beginning at a point having Coordinates of X = 2,202,325.00 and Y = 245,674.00; thence East 14,453.00 feet to a point having Coordinates of X = 2,216,778.00 and Y = 245,674.00; thence South 7,000.00 feet to a point having Coordinates of X = 2,216,778.00 and Y = 238,674.00; thence West 14,453.00 feet to a point having Coordinates of X = 2,202,325.00 and Y = 238,674.00; thence North 7,000.00 feet to the point of beginning, (This lease includes only waterbottoms claimed and owned by the state and specifically excludes any land which the state may claim or own and to which the mineral rights are vested in the state), containing approximately **1,470 acres**, all as more particularly outlined on a plat on file in the Office of Mineral Resources, Department of Natural Resources. All bearings, distances and coordinates are based on Louisiana Coordinate System of 1927, (North or South Zone), where applicable.

NOTE: The above description of the Tract nominated for the purpose of acquiring a mineral lease or a geophysical agreement has been provided and corrected, where required, exclusively by the nominating party. Any mineral lease or geophysical agreement selected from this Tract and awarded by the Louisiana State Mineral and Energy Board shall be without warranty of any kind, either express, implied or statutory including, but not limited to, title or the implied warranties of merchantability and fitness for a particular purpose.

An error or omission in the nominating party's Tract description may require that a State mineral lease or geophysical agreement be modified, canceled or abrogated due to the existence of conflicting leases, operating agreements, private claims or other future obligations or conditions within the Tract described. In such case, however, the Louisiana State Mineral and Energy Board shall not be obligated to refund any consideration paid by the Lessee prior to such modification, cancellation or abrogation including, but not limited to, bonuses, rentals and royalties.

NOTE: The State of Louisiana does hereby reserve, and this lease shall be subject to, the imprescriptible right of surface use in the nature of a servitude in favor of the Department of Natural Resources, including its Offices and Commissions, for the sole purpose of implementing, constructing, servicing and maintaining approved coastal zone management and/or restoration projects. Utilization of any and all rights derived under this lease by the mineral lessee, its agents, successors or assigns, shall not interfere with nor hinder the reasonable surface use by the

Department of Natural Resources, its Offices or Commissions, as herein above reserved.

Applicant: ROBERT A. SCHROEDER, INC

Bidder	Cash Payment	Price/Acre	Rental	Oil	Gas	Other



Legend

16120020

LAKE QUITMAN

TERREBONNE

BAYOU SALE

T20S - R18E

T20S - R17E

P.O.B.

0 2,500 Feet

**TRACT 44638 - Terrebonne Parish, Louisiana**

All of the lands now or formerly constituting the beds and bottoms of all water bodies of every nature and description as to which title is vested in the State of Louisiana, together with all islands arising therein and other lands formed by accretion or by reliction, where allowed by law, excepting tax adjudicated lands, and not presently under mineral lease on December 14, 2016, situated in Terrebonne Parish, Louisiana, and more particularly described as follows: Beginning at a point having Coordinates of X = 2,050,439.66 and Y = 245,019.89; thence East 10,340.64 feet to a point on the boundary of Operating Agreement No. A0327, as amended, having Coordinates of X = 2,060,780.30 and Y = 245,019.89; thence along the boundary of said Operating Agreement No. A0327 the following courses and distances: South 2,331.20 feet to a point having Coordinates of X = 2,060,780.30 and Y = 242,688.69, and East 898.42 feet to a point having Coordinates of X = 2,061,678.72 and Y = 242,688.69; thence South 4,128.14 feet to the Northwest corner of State Lease No. 21611, also being the Northeast corner of State Lease No. 21612, having Coordinates of X = 2,061,678.72 and Y = 238,560.55; thence along the boundary of said State Lease No. 21612 the following courses and distances: North 54 degrees 45 minutes 10 seconds West 857.31 feet to a point having Coordinates of X = 2,060,978.58 and Y = 239,055.30, North 85 degrees 16 minutes 54 seconds West 2,106.68 feet to a point having Coordinates of X = 2,058,879.04 and Y = 239,228.59, thence North 80 degrees 05 minutes 20 seconds West 1,591.06 feet to a point having Coordinates of X = 2,057,311.73 and Y = 239,502.44, South 72 degrees 34 minutes 24 seconds West 723.25 feet to a point having Coordinates of X = 2,056,621.68 and Y = 239,285.84, South 00 degrees 26 minutes 02 seconds East 1,838.12 feet to a point having Coordinates of X = 2,056,635.60 and Y = 237,447.77, and South 14 degrees 20 minutes 31 seconds East 757.06 feet to the Northwest corner of State Lease No. 21613, having Coordinates of X = 2,056,823.13 and Y = 236,714.30; thence West 6,383.47 feet to a point having Coordinates of X = 2,050,439.66 and Y = 236,714.30; thence North 8,305.59 feet to the point of beginning, **LESS AND EXCEPT** any portion of Operating Agreement No. A0327 that may lie within the above described tract, containing approximately **1,602 acres**, all as more particularly outlined on a plat on file in the Office of Mineral Resources, Department of Natural Resources. All bearings, distances and coordinates are based on Louisiana Coordinate System of 1927, (North or South Zone), where applicable.

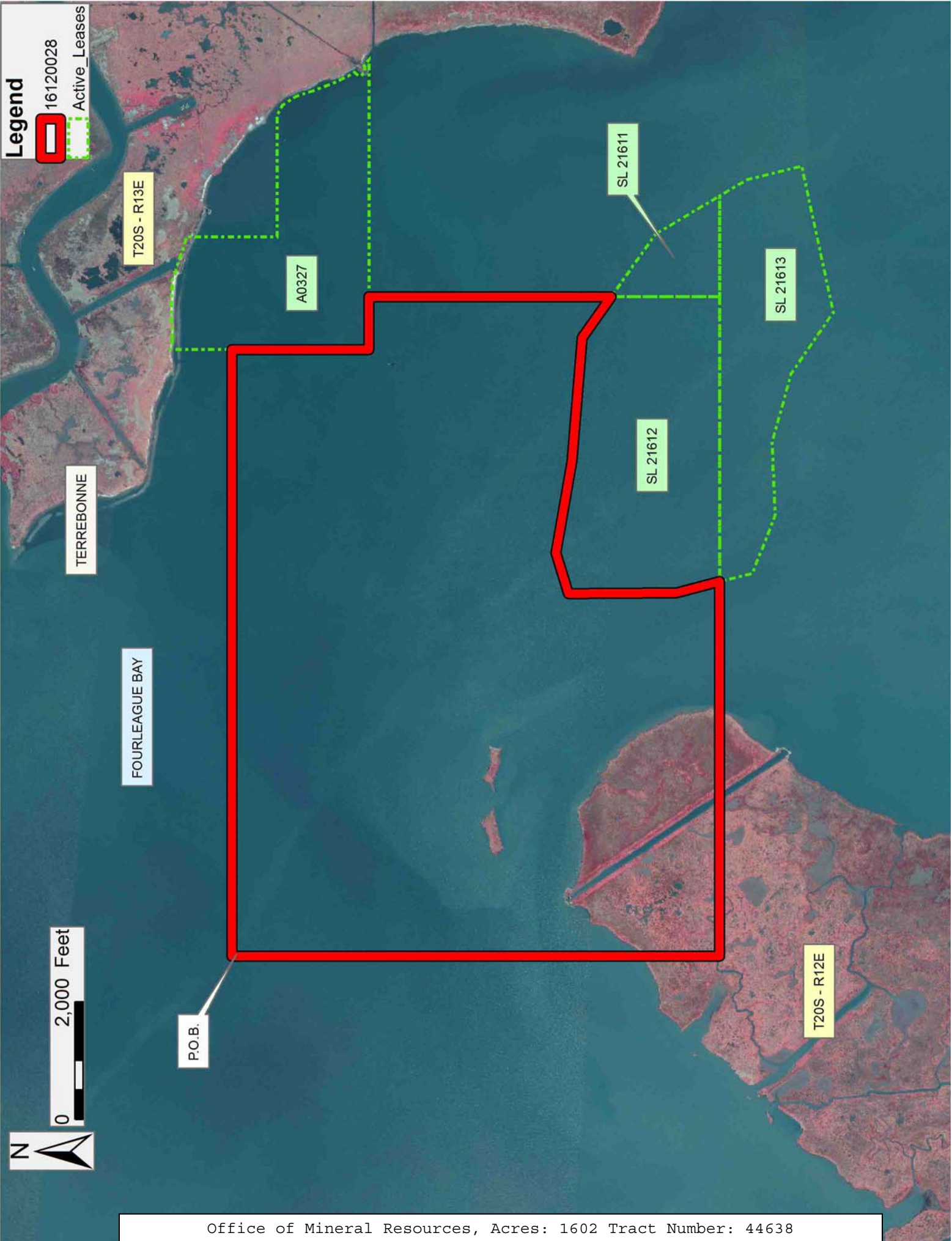
NOTE: The above description of the Tract nominated for the purpose of acquiring a mineral lease or a geophysical agreement has been provided and corrected, where required, exclusively by the nominating party. Any mineral lease or geophysical agreement selected from this Tract and awarded by the Louisiana State Mineral and Energy Board shall be without warranty of any kind, either express, implied or statutory including, but not limited to, title or the implied warranties of merchantability and fitness for a particular purpose.

An error or omission in the nominating party's Tract description may require that a State mineral lease or geophysical agreement be modified, canceled or abrogated due to the existence of conflicting leases, operating agreements, private claims or other future obligations or conditions within the Tract described. In such case, however, the Louisiana State Mineral and Energy Board shall not be obligated to refund any consideration paid by the Lessee prior to such modification, cancellation or abrogation including, but not limited to, bonuses, rentals and royalties.

NOTE: The State of Louisiana does hereby reserve, and this lease shall be subject to, the imprescriptible right of surface use in the nature of a servitude in favor of the Department of Natural Resources, including its Offices and Commissions, for the sole purpose of implementing, constructing, servicing and maintaining approved coastal zone management and/or restoration projects. Utilization of any and all rights derived under this lease by the mineral lessee, its agents, successors or assigns, shall not interfere with nor hinder the reasonable surface use by the Department of Natural Resources, its Offices or Commissions, as herein above reserved.

Applicant: THEOPHILUS OIL, GAS & LAND SERVICES, LLC

Bidder	Cash Payment	Price/Acre	Rental	Oil	Gas	Other





**TRACT 44639 - Terrebonne Parish, Louisiana**

All of the lands now or formerly constituting the beds and bottoms of all water bodies of every nature and description as to which title is vested in the State of Louisiana, together with all islands arising therein and other lands formed by accretion or by reliction, where allowed by law, excepting tax adjudicated lands, and not presently under mineral lease on December 14, 2016, situated in Terrebonne Parish, Louisiana, and more particularly described as follows: Beginning at a point having Coordinates of X = 2,046,584.14 and Y = 236,714.30; thence East 10,238.99 feet to the Southwest corner of State Lease No. 21612, also being the Northwest corner of State Lease No. 21613, having Coordinates of X = 2,056,823.13 and Y = 236,714.30; thence along the boundary of said State Lease No. 21613 the following courses and distances: South 14 degrees 20 minutes 30 seconds East 579.59 feet to a point having Coordinates of X = 2,056,966.70 and Y = 236,152.76, South 68 degrees 36 minutes 57 seconds East 1,065.98 feet to a point having Coordinates of X = 2,057,958.45 and Y = 235,764.42, North 87 degrees 20 minutes 55 seconds East 1,237.53 feet to a point having Coordinates of X = 2,059,194.66 and Y = 235,821.66, South 74 degrees 22 minutes 58 seconds East 1,224.16 feet to a point having Coordinates of X = 2,060,373.63 and Y = 235,492.11, South 55 degrees 28 minutes 24 seconds East 1,263.89 feet to a point having Coordinates of X = 2,061,414.89 and Y = 234,775.76, North 77 degrees 48 minutes 38 seconds East 2,550.02 feet to a point having Coordinates of X = 2,063,907.42 and Y = 235,314.18, North 14 degrees 03 minutes 30 seconds West 974.53 feet to a point having Coordinates of X = 2,063,670.70 and Y = 236,259.52, and North 30 degrees 52 minutes 46 seconds West 529.89 feet to the Southeast corner of State Lease No. 21611, having Coordinates of X = 2,063,398.75 and Y = 236,714.30; thence East 1,665.39 feet to a point having Coordinates of X = 2,065,064.14 and Y = 236,714.30; thence South 7,376.02 feet to a point having Coordinates of X = 2,065,064.14 and Y = 229,338.28; thence West 18,480.00 feet to a point having Coordinates of X = 2,046,584.14 and Y = 229,338.28; thence North 7,376.02 feet to the point of beginning, containing approximately **2,052 acres**, all as more particularly outlined on a plat on file in the Office of Mineral Resources, Department of Natural Resources. All bearings, distances and coordinates are based on Louisiana Coordinate System of 1927, (North or South Zone), where applicable.

NOTE: The above description of the Tract nominated for the purpose of acquiring a mineral lease or a geophysical agreement has been provided and corrected, where required, exclusively by the nominating party. Any mineral lease or geophysical agreement selected from this Tract and awarded by the Louisiana State Mineral and Energy Board shall be without warranty of any kind, either express, implied or statutory including, but not limited to, title or the implied warranties of merchantability and fitness for a particular purpose.

An error or omission in the nominating party's Tract description may require that a State mineral lease or geophysical agreement be modified, canceled or abrogated due to the existence of conflicting leases,

operating agreements, private claims or other future obligations or conditions within the Tract described. In such case, however, the Louisiana State Mineral and Energy Board shall not be obligated to refund any consideration paid by the Lessee prior to such modification, cancellation or abrogation including, but not limited to, bonuses, rentals and royalties.

NOTE: The State of Louisiana does hereby reserve, and this lease shall be subject to, the imprescriptible right of surface use in the nature of a servitude in favor of the Department of Natural Resources, including its Offices and Commissions, for the sole purpose of implementing, constructing, servicing and maintaining approved coastal zone management and/or restoration projects. Utilization of any and all rights derived under this lease by the mineral lessee, its agents, successors or assigns, shall not interfere with nor hinder the reasonable surface use by the Department of Natural Resources, its Offices or Commissions, as herein above reserved.

Applicant: THEOPHILUS OIL, GAS & LAND SERVICES, LLC

Bidder	Cash Payment	Price/Acre	Rental	Oil	Gas	Other

**Legend**

16120030

Active\_Leases



T20S - R13E

SL 21611

SL 21612

SL 21613

TERREBONNE

T20S - R12E

P.O.B.

0 3,000 Feet



**TRACT 44640 - Terrebonne Parish, Louisiana**

All of the lands now or formerly constituting the beds and bottoms of all water bodies of every nature and description as to which title is vested in the State of Louisiana, together with all islands arising therein and other lands formed by accretion or by reliction, where allowed by law, excepting tax adjudicated lands, and not presently under mineral lease on December 14, 2016, situated in Terrebonne Parish, Louisiana, and more particularly described as follows: Beginning at a point having Coordinates of X = 2,065,064.14 and Y = 236,714.30; thence East 18,480.00 feet to a point having Coordinates of X = 2,083,544.14 and Y = 236,714.30; thence South 18,480.00 feet to a point having Coordinates of X = 2,083,544.14 and Y = 218,234.30; thence West 18,480.00 feet to a point having Coordinates of X = 2,065,064.14 and Y = 218,234.30; thence North 18,840.00 feet to the point of beginning, containing approximately **1,874 acres**, all as more particularly outlined on a plat on file in the Office of Mineral Resources, Department of Natural Resources. All bearings, distances and coordinates are based on Louisiana Coordinate System of 1927, (North or South Zone), where applicable.

NOTE: The above description of the Tract nominated for the purpose of acquiring a mineral lease or a geophysical agreement has been provided and corrected, where required, exclusively by the nominating party. Any mineral lease or geophysical agreement selected from this Tract and awarded by the Louisiana State Mineral and Energy Board shall be without warranty of any kind, either express, implied or statutory including, but not limited to, title or the implied warranties of merchantability and fitness for a particular purpose.

An error or omission in the nominating party's Tract description may require that a State mineral lease or geophysical agreement be modified, canceled or abrogated due to the existence of conflicting leases, operating agreements, private claims or other future obligations or conditions within the Tract described. In such case, however, the Louisiana State Mineral and Energy Board shall not be obligated to refund any consideration paid by the Lessee prior to such modification, cancellation or abrogation including, but not limited to, bonuses, rentals and royalties.

NOTE: The State of Louisiana does hereby reserve, and this lease shall be subject to, the imprescriptible right of surface use in the nature of a servitude in favor of the Department of Natural Resources, including its Offices and Commissions, for the sole purpose of implementing, constructing, servicing and maintaining approved coastal zone management and/or restoration projects. Utilization of any and all rights derived under this lease by the mineral lessee, its agents, successors or assigns, shall not interfere with nor hinder the reasonable surface use by the Department of Natural Resources, its Offices or Commissions, as herein above reserved.

Applicant: THEOPHILUS OIL, GAS & LAND SERVICES, LLC

Bidder	Cash Payment	Price/Acre	Rental	Oil	Gas	Other

Legend



16120033



0 5,000 Feet

T20S - R13E

RICE BAYOU

T20S - R14E

BLUE HAMMOCK BAYOU

FIDDLERS LAKE

P.O.B.

FOURLEAGUE BAY

T21S - R13E

TERREBONNE

**TRACT 44641 - Terrebonne Parish, Louisiana**

All of the lands now or formerly constituting the beds and bottoms of all water bodies of every nature and description as to which title is vested in the State of Louisiana, together with all islands arising therein and other lands formed by accretion or by reliction, where allowed by law, excepting tax adjudicated lands, and not presently under mineral lease on December 14, 2016, situated in Terrebonne Parish, Louisiana, and more particularly described as follows: Beginning at a point having Coordinates of X = 2,028,104.14 and Y = 236,714.30; thence East 18,480.00 feet to a point having Coordinates of X = 2,046,584.14 and Y = 236,714.30; thence South 18,480.00 feet to a point having Coordinates of X = 2,046,584.14 and Y = 218,234.30; thence West 18,480.00 feet to a point having Coordinates of X = 2,028,104.14 and Y = 218,234.30; thence North 18,480.00 feet to the point of beginning, containing approximately **1,959 acres**, all as more particularly outlined on a plat on file in the Office of Mineral Resources, Department of Natural Resources. All bearings, distances and coordinates are based on Louisiana Coordinate System of 1927, (North or South Zone), where applicable.

NOTE: The above description of the Tract nominated for the purpose of acquiring a mineral lease or a geophysical agreement has been provided and corrected, where required, exclusively by the nominating party. Any mineral lease or geophysical agreement selected from this Tract and awarded by the Louisiana State Mineral and Energy Board shall be without warranty of any kind, either express, implied or statutory including, but not limited to, title or the implied warranties of merchantability and fitness for a particular purpose.

An error or omission in the nominating party's Tract description may require that a State mineral lease or geophysical agreement be modified, canceled or abrogated due to the existence of conflicting leases, operating agreements, private claims or other future obligations or conditions within the Tract described. In such case, however, the Louisiana State Mineral and Energy Board shall not be obligated to refund any consideration paid by the Lessee prior to such modification, cancellation or abrogation including, but not limited to, bonuses, rentals and royalties.

NOTE: The State of Louisiana does hereby reserve, and this lease shall be subject to, the imprescriptible right of surface use in the nature of a servitude in favor of the Department of Natural Resources, including its Offices and Commissions, for the sole purpose of implementing, constructing, servicing and maintaining approved coastal zone management and/or restoration projects. Utilization of any and all rights derived under this lease by the mineral lessee, its agents, successors or assigns, shall not interfere with nor hinder the reasonable surface use by the Department of Natural Resources, its Offices or Commissions, as herein above reserved.

Applicant: THEOPHILUS OIL, GAS & LAND SERVICES, LLC

Bidder	Cash Payment	Price/Acre	Rental	Oil	Gas	Other



Legend  
16120029



**TRACT 44642 - Terrebonne Parish, Louisiana**

All of the lands now or formerly constituting the beds and bottoms of all water bodies of every nature and description as to which title is vested in the State of Louisiana, together with all islands arising therein and other lands formed by accretion or by reliction, where allowed by law, excepting tax adjudicated lands, and not presently under mineral lease on December 14, 2016, situated in Terrebonne Parish, Louisiana, and more particularly described as follows: Beginning at a point having Coordinates of X = 2,046,584.14 and Y = 229,338.28; thence East 18,480.00 feet to a point having Coordinates of X = 2,065,064.14 and Y = 229,338.28; thence South 3,370.09 feet to a point having Coordinates of X = 2,065,064.14 and Y = 225,968.19; thence West 18,480.00 feet to a point having Coordinates of X = 2,046,584.14 and Y = 225,968.19; thence North 3,370.09 feet to the point of beginning, containing approximately **1,065 acres**, all as more particularly outlined on a plat on file in the Office of Mineral Resources, Department of Natural Resources. All bearings, distances and coordinates are based on Louisiana Coordinate System of 1927, (North or South Zone), where applicable.

NOTE: The above description of the Tract nominated for the purpose of acquiring a mineral lease or a geophysical agreement has been provided and corrected, where required, exclusively by the nominating party. Any mineral lease or geophysical agreement selected from this Tract and awarded by the Louisiana State Mineral and Energy Board shall be without warranty of any kind, either express, implied or statutory including, but not limited to, title or the implied warranties of merchantability and fitness for a particular purpose.

An error or omission in the nominating party's Tract description may require that a State mineral lease or geophysical agreement be modified, canceled or abrogated due to the existence of conflicting leases, operating agreements, private claims or other future obligations or conditions within the Tract described. In such case, however, the Louisiana State Mineral and Energy Board shall not be obligated to refund any consideration paid by the Lessee prior to such modification, cancellation or abrogation including, but not limited to, bonuses, rentals and royalties.

NOTE: The State of Louisiana does hereby reserve, and this lease shall be subject to, the imprescriptible right of surface use in the nature of a servitude in favor of the Department of Natural Resources, including its Offices and Commissions, for the sole purpose of implementing, constructing, servicing and maintaining approved coastal zone management and/or restoration projects. Utilization of any and all rights derived under this lease by the mineral lessee, its agents, successors or assigns, shall not interfere with nor hinder the reasonable surface use by the Department of Natural Resources, its Offices or Commissions, as herein above reserved.

Applicant: THEOPHILUS OIL, GAS & LAND SERVICES, LLC

Bidder	Cash Payment	Price/Acre	Rental	Oil	Gas	Other

Legend



16120031

T20S - R13E

BLUE HAMMOCK BAYOU

FOURLEAGUE BAY

TERREBONNE

T20S - R12E

P.O.B.

MOSQUITO BAYOU

0 4,000 Feet



**TRACT 44643 - Terrebonne Parish, Louisiana**

All of the lands now or formerly constituting the beds and bottoms of all water bodies of every nature and description as to which title is vested in the State of Louisiana, together with all islands arising therein and other lands formed by accretion or by reliction, where allowed by law, excepting tax adjudicated lands, and not presently under mineral lease on December 14, 2016, situated in Terrebonne Parish, Louisiana, and more particularly described as follows: Beginning at a point having Coordinates of X = 2,046,584.14 and Y = 225,968.19; thence East 18,480.00 feet to a point having Coordinates of X = 2,065,064.14 and Y = 225,968.19; thence South 7,733.89 feet to a point having Coordinates of X = 2,065,064.14 and Y = 218,234.30; thence West 18,480.00 feet to a point having Coordinates of X = 2,046,584.14 and Y = 218,234.30; thence North 7,733.89 feet to the point of beginning, **LESS AND EXCEPT** all that portion of State Lease No. 21614 which lies entirely within the above described tract and more fully described as follows: Commencing at a point being the point of beginning of the above described nominated tract having coordinates of X = 2,046,584.14 and Y = 225,968.19; thence South 82 degrees 50 minutes 31 seconds East 11,983.25 feet to a point being the point of beginning of said State Lease No. 21614 having Coordinates of X = 2,058,474.00 and Y = 224,475.00; thence East 2,002.00 feet to a point having Coordinates of X = 2,060,476.00 and Y = 224,475.00; thence South 65 degrees 29 minutes 36 seconds East 2,651.90 feet to a point having Coordinates of X = 2,062,889.00 and Y = 223,375.00; thence South 42 degrees 23 minutes 20 seconds East 869.23 feet to a point having Coordinates of X = 2,063,475.00 and Y = 222,733.00; thence South 973.00 feet to a point having Coordinates of X = 2,063,475.00 and Y = 221,760.00; thence South 89 degrees 17 minutes 36 seconds West 973.07 feet to a point having Coordinates of X = 2,062,502.00 and Y = 221,748.00; thence South 36 degrees 53 minutes 00 seconds West 1,702.80 feet to a point having Coordinates of X = 2,061,480.00 and Y = 220,386.00; thence West 1,548.00 feet to a point having Coordinates of X = 2,059,932.00 and Y = 220,386.00; thence North 65 degrees 07 minutes 51 seconds West 2,720.25 feet to a point having Coordinates of X = 2,057,464.00 and Y = 221,530.00; thence North 27 degrees 41 minutes 47 seconds West 860.61 feet to a point having Coordinates of X = 2,057,064.00 and Y = 222,292.00; thence North 59 degrees 32 minutes 49 seconds East 1,635.65 feet to a point having Coordinates of X = 2,058,474.00 and Y = 223,121.00; thence North 1,354.00 feet to the point of beginning, the nominated tract containing approximately **2,132 acres**, all as more particularly outlined on a plat on file in the Office of Mineral Resources, Department of Natural Resources. All bearings, distances and coordinates are based on Louisiana Coordinate System of 1927, (North or South Zone), where applicable.

NOTE: The above description of the Tract nominated for the purpose of acquiring a mineral lease or a geophysical agreement has been provided and corrected, where required, exclusively by the nominating party. Any mineral lease or geophysical agreement selected from this Tract and awarded by the Louisiana State Mineral and Energy Board shall be without

warranty of any kind, either express, implied or statutory including, but not limited to, title or the implied warranties of merchantability and fitness for a particular purpose.

An error or omission in the nominating party's Tract description may require that a State mineral lease or geophysical agreement be modified, canceled or abrogated due to the existence of conflicting leases, operating agreements, private claims or other future obligations or conditions within the Tract described. In such case, however, the Louisiana State Mineral and Energy Board shall not be obligated to refund any consideration paid by the Lessee prior to such modification, cancellation or abrogation including, but not limited to, bonuses, rentals and royalties.

NOTE: The State of Louisiana does hereby reserve, and this lease shall be subject to, the imprescriptible right of surface use in the nature of a servitude in favor of the Department of Natural Resources, including its Offices and Commissions, for the sole purpose of implementing, constructing, servicing and maintaining approved coastal zone management and/or restoration projects. Utilization of any and all rights derived under this lease by the mineral lessee, its agents, successors or assigns, shall not interfere with nor hinder the reasonable surface use by the Department of Natural Resources, its Offices or Commissions, as herein above reserved.

Applicant: THEOPHILUS OIL, GAS & LAND SERVICES, LLC

Bidder	Cash Payment	Price/Acre	Rental	Oil	Gas	Other

**Legend**

16120032

Active\_Leases

