

TRACT 44614 - Terrebonne Parish, Louisiana

All of the lands now or formerly constituting the beds and bottoms of all water bodies of every nature and description as to which title is vested in the State of Louisiana, together with all islands arising therein and other lands formed by accretion or by reliction, where allowed by law, excepting tax adjudicated lands, and not presently under mineral lease on December 14, 2016, situated in Terrebonne Parish, Louisiana, and more particularly described as follows: Beginning at a point having Coordinates of X = 2,165,010.87 and Y = 402,334.36; thence South 14 degrees 38 minutes 05 seconds East 15,144.33 feet to a point having Coordinates of X = 2,168,837.18 and Y = 387,681.36; thence South 66 degrees 52 minutes 25 seconds West 1,712.57 Feet to a point having Coordinates of X = 2,167,262.23 and Y = 387,008.73; thence North 24 degrees 02 minutes 03 seconds West 9,616.68 feet to a point having Coordinates of X = 2,163,345.52 and Y = 395,791.66; thence North 01 degrees 59 minutes 01 seconds East 6,858.36 feet to a point having Coordinates of X = 2,163,582.90 and Y = 402,645.91; thence South 77 degrees 41 minutes 31 seconds East 1,461.56 feet to point of beginning, containing approximately **21 acres**, all as more particularly outlined on a plat on file in the Office of Mineral Resources, Department of Natural Resources. All bearings, distances and coordinates are based on Louisiana Coordinate System of 1927, (North or South Zone), where applicable.

NOTE: The above description of the Tract nominated for the purpose of acquiring a mineral lease or a geophysical agreement has been provided and corrected, where required, exclusively by the nominating party. Any mineral lease or geophysical agreement selected from this Tract and awarded by the Louisiana State Mineral and Energy Board shall be without warranty of any kind, either express, implied or statutory including, but not limited to, title or the implied warranties of merchantability and fitness for a particular purpose.

An error or omission in the nominating party's Tract description may require that a State mineral lease or geophysical agreement be modified, canceled or abrogated due to the existence of conflicting leases, operating agreements, private claims or other future obligations or conditions within the Tract described. In such case, however, the Louisiana State Mineral and Energy Board shall not be obligated to refund any consideration paid by the Lessee prior to such modification, cancellation or abrogation including, but not limited to, bonuses, rentals and royalties.

NOTE: The State of Louisiana does hereby reserve, and this lease shall be subject to, the imprescriptible right of surface use in the nature of a servitude in favor of the Department of Natural Resources, including its Offices and Commissions, for the sole purpose of implementing, constructing, servicing and maintaining approved coastal zone management and/or restoration projects. Utilization of any and all rights derived under this lease by the mineral lessee, its agents, successors or assigns, shall not interfere with nor hinder the reasonable surface use by the

Department of Natural Resources, its Offices or Commissions, as herein above reserved.

Applicant: ROVIG MINERALS, INC.

Bidder	Cash Payment	Price/Acre	Rental	Oil	Gas	Other

Legend

 16120013

 Counties



TRACT 44615 - Terrebonne Parish, Louisiana

All of the lands now or formerly constituting the beds and bottoms of all water bodies of every nature and description as to which title is vested in the State of Louisiana, together with all islands arising therein and other lands formed by accretion or by reliction, where allowed by law, excepting tax adjudicated lands, and not presently under mineral lease on December 14, 2016, situated in Terrebonne Parish, Louisiana, and more particularly described as follows: Beginning at a point having Coordinates of X = 2,169,815.72 and Y = 392,120.33; thence South 08 degrees 16 minutes 15 seconds East 3,785.35 Feet to a point having Coordinates of X = 2,170,360.24 and Y = 388,374.34; thence South 65 degrees 24 minutes 36 seconds West 609.16 feet to a point having Coordinates of X = 2,169,806.32 and Y = 388,120.85; thence North 05 degrees 26 minutes 02 seconds West 3,866.63 feet to a point having Coordinates of X = 2,169,440.18 and Y = 391,970.11; thence North 68 degree 11 minutes 55 seconds East 404.47 feet to the point of beginning, containing approximately **1 acre**, all as more particularly outlined on a plat on file in the Office of Mineral Resources, Department of Natural Resources. All bearings, distances and coordinates are based on Louisiana Coordinate System of 1927, (North or South Zone), where applicable.

NOTE: The above description of the Tract nominated for the purpose of acquiring a mineral lease or a geophysical agreement has been provided and corrected, where required, exclusively by the nominating party. Any mineral lease or geophysical agreement selected from this Tract and awarded by the Louisiana State Mineral and Energy Board shall be without warranty of any kind, either express, implied or statutory including, but not limited to, title or the implied warranties of merchantability and fitness for a particular purpose.

An error or omission in the nominating party's Tract description may require that a State mineral lease or geophysical agreement be modified, canceled or abrogated due to the existence of conflicting leases, operating agreements, private claims or other future obligations or conditions within the Tract described. In such case, however, the Louisiana State Mineral and Energy Board shall not be obligated to refund any consideration paid by the Lessee prior to such modification, cancellation or abrogation including, but not limited to, bonuses, rentals and royalties.

NOTE: The State of Louisiana does hereby reserve, and this lease shall be subject to, the imprescriptible right of surface use in the nature of a servitude in favor of the Department of Natural Resources, including its Offices and Commissions, for the sole purpose of implementing, constructing, servicing and maintaining approved coastal zone management and/or restoration projects. Utilization of any and all rights derived under this lease by the mineral lessee, its agents, successors or assigns, shall not interfere with nor hinder the reasonable surface use by the

Department of Natural Resources, its Offices or Commissions, as herein above reserved.

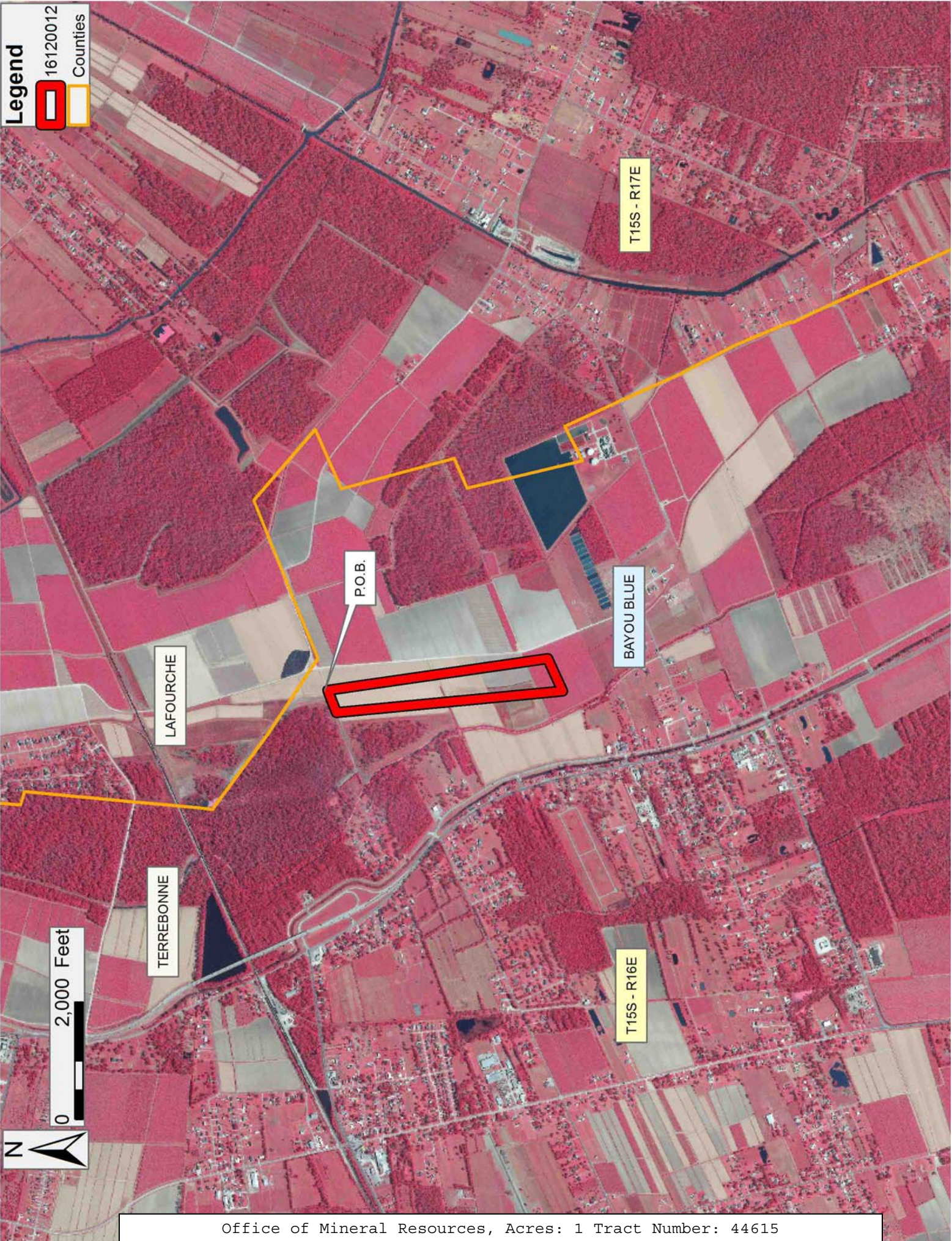
Applicant: ROVIG MINERALS, INC.

Bidder	Cash Payment	Price/Acre	Rental	Oil	Gas	Other

Legend

16120012

Counties



TRACT 44616 - Jefferson Parish, Louisiana

All of the lands now or formerly constituting the beds and bottoms of all water bodies of every nature and description as to which title is vested in the State of Louisiana, together with all islands arising therein and other lands formed by accretion or by reliction, where allowed by law, excepting tax adjudicated lands, and not presently under mineral lease on December 14, 2016, situated in Jefferson Parish, Louisiana, and more particularly described as follows: Beginning at a point having Coordinates of X = 2,385,572.39 and Y = 311,374.80, said point being the Northwest corner of Operating Agreement No. A0332; thence Northwesterly approximately 826 feet to a point being the Southeast corner of State Lease No. 2453, as amended, said point having a Coordinate of X = 2,385,310.49; thence North approximately 4,930 feet along the Eastern boundary of said State Lease No. 2453, as amended, to a point having Coordinates of X = 2,385,310.49 and Y = 317,090.19, said point being the Easternmost Northeast corner of said State Lease No. 2453, as amended; thence East 1,419.97 feet to a point having Coordinates of X = 2,386,730.46 and Y = 317,090.19; thence North 291.66 feet to a point having Coordinates of X = 2,386,730.46 and Y = 317,381.85, said point being the Southwest corner of State Lease No. 16709, as amended; thence East 1,403.66 feet along the Southern boundary of said State Lease No. 16709, as amended, to a point having Coordinates of X = 2,388,134.12 and Y = 317,381.85; thence South 5,368.97 feet to a point having Coordinates of X = 2,388,134.12 and Y = 312,012.88 said point being the Northeast corner of said Operating Agreement No. A0332; thence South 76 degrees 00 minutes 48 seconds West 2,640.00 feet along the Northern boundary of said Operating Agreement No. A0332 to the point of beginning, containing approximately **359 acres**, all as more particularly outlined on a plat on file in the Office of Mineral Resources, Department of Natural Resources. All bearings, distances and coordinates are based on Louisiana Coordinate System of 1927, (North or South Zone), where applicable.

NOTE: The above description of the Tract nominated for the purpose of acquiring a mineral lease or a geophysical agreement has been provided and corrected, where required, exclusively by the nominating party. Any mineral lease or geophysical agreement selected from this Tract and awarded by the Louisiana State Mineral and Energy Board shall be without warranty of any kind, either express, implied or statutory including, but not limited to, title or the implied warranties of merchantability and fitness for a particular purpose.

An error or omission in the nominating party's Tract description may require that a State mineral lease or geophysical agreement be modified, canceled or abrogated due to the existence of conflicting leases, operating agreements, private claims or other future obligations or conditions within the Tract described. In such case, however, the Louisiana State Mineral and Energy Board shall not be obligated to refund any consideration paid by the Lessee prior to such modification,

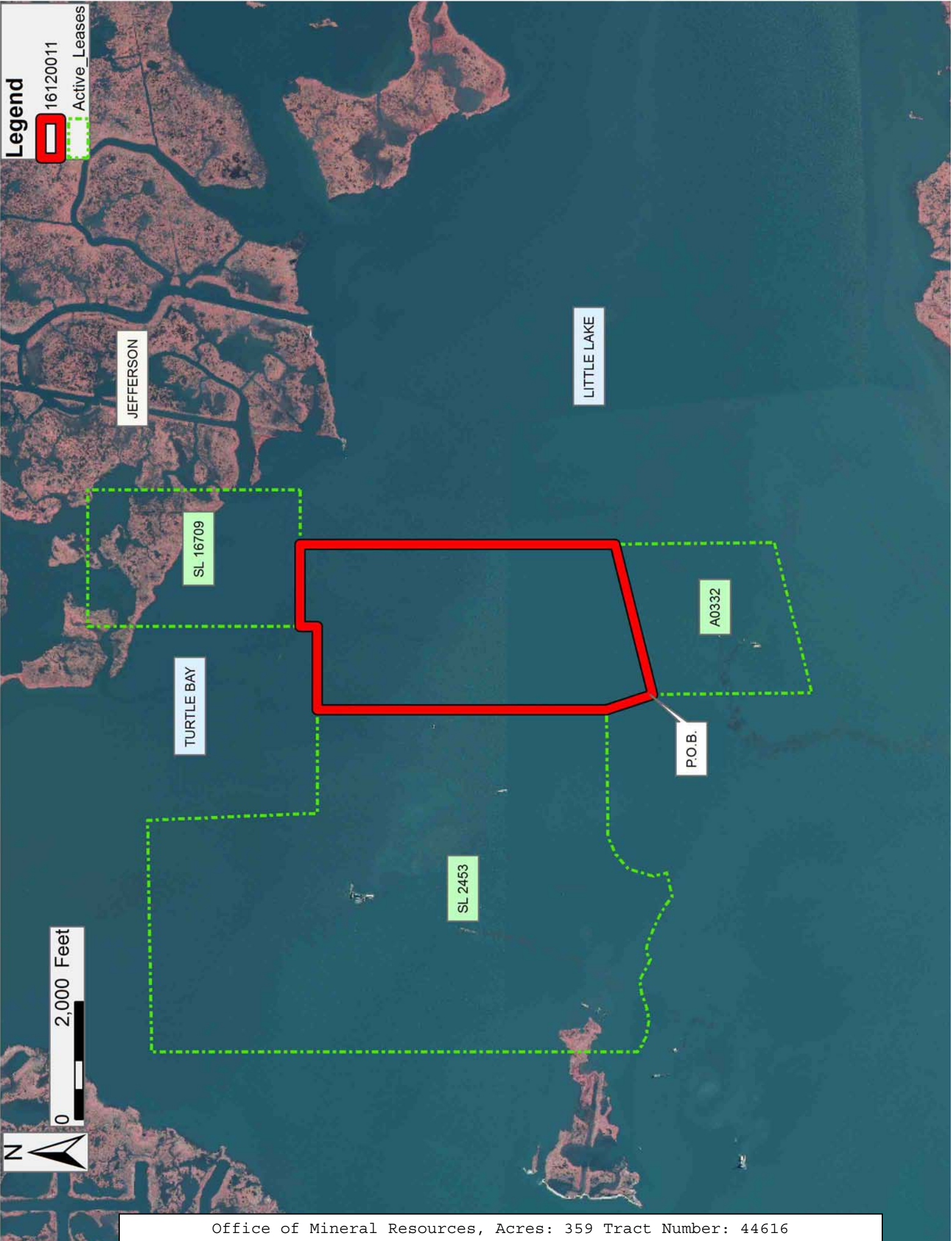
cancellation or abrogation including, but not limited to, bonuses, rentals and royalties.

NOTE: The State of Louisiana does hereby reserve, and this lease shall be subject to, the imprescriptible right of surface use in the nature of a servitude in favor of the Department of Natural Resources, including its Offices and Commissions, for the sole purpose of implementing, constructing, servicing and maintaining approved coastal zone management and/or restoration projects. Utilization of any and all rights derived under this lease by the mineral lessee, its agents, successors or assigns, shall not interfere with nor hinder the reasonable surface use by the Department of Natural Resources, its Offices or Commissions, as herein above reserved.

NOTE: This tract is located in an area designated by the Louisiana Legislature or the Wildlife and Fisheries Commission as a Public Oyster Seed Ground, Reservation, or area of Calcasieu or Sabine Lake. Proposed projects occurring in these areas will be evaluated on a case by case basis by Louisiana Department of Wildlife & Fisheries. Modifications to proposed project features including, but not limited to, access routes, well sites, flowlines, and appurtenant structures maybe required by the Louisiana Department of Wildlife and Fisheries. In addition, compensatory mitigation will be required to offset unavoidable habitat impacts.

Applicant: ROBERT A. SCHROEDER, INC.

Bidder	Cash Payment	Price/Acre	Rental	Oil	Gas	Other



Legend
16120011
Active_Leases

JEFFERSON

LITTLE LAKE

TURTLE BAY

SL 16709

SL 2453

A0332

P.O.B.

0 2,000 Feet

TRACT 44617 - Plaquemines Parish, Louisiana

All of the lands now or formerly constituting the beds and bottoms of all water bodies of every nature and description as to which title is vested in the State of Louisiana, together with all islands arising therein and other lands formed by accretion or by reliction, where allowed by law, excepting tax adjudicated lands, and not presently under mineral lease on December 14, 2016, situated in Plaquemines Parish, Louisiana, and more particularly described as follows: Beginning at a point having Coordinates of X = 2,540,542.40 and Y = 316,200.00; thence East 9,355.71 feet to a point having Coordinates of X = 2,549,898.11 and Y = 316,200.00; thence South 9,700.68 feet to the Northeast corner of State Lease No. 1794, as amended, having Coordinates of X = 2,549,898.11 and Y = 306,499.32; thence West 9,355.71 feet along the boundary of said State Lease No. 1794 to its Northwest corner having Coordinates of X = 2,540,542.40 and Y = 306,499.32; thence North 9,700.68 feet to the point of beginning, (This lease includes only waterbottoms claimed and owned by the state and specifically excludes any land which the state may claim or own and to which the mineral rights are vested in the state), containing approximately **1,990 acres**, all as more particularly outlined on a plat on file in the Office of Mineral Resources, Department of Natural Resources. All bearings, distances and coordinates are based on Louisiana Coordinate System of 1927, (North or South Zone), where applicable.

NOTE: The above description of the Tract nominated for the purpose of acquiring a mineral lease or a geophysical agreement has been provided and corrected, where required, exclusively by the nominating party. Any mineral lease or geophysical agreement selected from this Tract and awarded by the Louisiana State Mineral and Energy Board shall be without warranty of any kind, either express, implied or statutory including, but not limited to, title or the implied warranties of merchantability and fitness for a particular purpose.

An error or omission in the nominating party's Tract description may require that a State mineral lease or geophysical agreement be modified, canceled or abrogated due to the existence of conflicting leases, operating agreements, private claims or other future obligations or conditions within the Tract described. In such case, however, the Louisiana State Mineral and Energy Board shall not be obligated to refund any consideration paid by the Lessee prior to such modification, cancellation or abrogation including, but not limited to, bonuses, rentals and royalties.

NOTE: The State of Louisiana does hereby reserve, and this lease shall be subject to, the imprescriptible right of surface use in the nature of a servitude in favor of the Department of Natural Resources, including its Offices and Commissions, for the sole purpose of implementing, constructing, servicing and maintaining approved coastal zone management and/or restoration projects. Utilization of any and all rights derived under this lease by the mineral lessee, its agents, successors or assigns,

shall not interfere with nor hinder the reasonable surface use by the Department of Natural Resources, its Offices or Commissions, as herein above reserved.

NOTE: This tract is located in an area designated by the Louisiana Legislature or the Wildlife and Fisheries Commission as a Public Oyster Seed Ground, Reservation, or area of Calcasieu or Sabine Lake. Proposed projects occurring in these areas will be evaluated on a case by case basis by Louisiana Department of Wildlife & Fisheries. Modifications to proposed project features including, but not limited to, access routes, well sites, flowlines, and appurtenant structures maybe required by the Louisiana Department of Wildlife and Fisheries. In addition, compensatory mitigation will be required to offset unavoidable habitat impacts.

Applicant: HAROLD J. ANDERSON, INC.

Bidder	Cash Payment	Price/Acre	Rental	Oil	Gas	Other

Legend

16120015

Active_Leases



TRACT 44618 - Jefferson Parish, Louisiana

All of the lands now or formerly constituting the beds and bottoms of all water bodies of every nature and description as to which title is vested in the State of Louisiana, together with all islands arising therein and other lands formed by accretion or by reliction, where allowed by law, excepting tax adjudicated lands, and not presently under mineral lease on December 14, 2016, situated in Jefferson Parish, Louisiana, and more particularly described as follows: Beginning at a point having Coordinates of X = 2,385,572.39 and Y = 311,374.80, said point being the Northwest corner of Operating Agreement No. A0332; thence South 00 degrees 35 minutes 15 seconds East 2,044.87 feet along the Western boundary of said Operating Agreement No. A0332 to a point having Coordinates of X = 2,385,593.36 and Y = 309,330.03, said point being the Northeast corner of State Lease No. 2383, as amended; thence West 4,350.37 feet along the Northern boundary of said State Lease No. 2383, as amended, to a point having Coordinates of X = 2,381,242.99 and Y = 309,330.03, said point being the Southeast corner of State Lease No. 19864, as amended; thence North approximately 2,153 feet along the Eastern boundary of said State Lease No. 19864, as amended, to a point being the Northeast corner of State Lease No. 19864, as amended, said point also being on the Southern boundary of State Lease No. 2453, as amended; thence Easterly, Northeasterly and Easterly along said Southern boundary of said State Lease No. 2453, as amended, to a point having a Coordinate of X = 2,385,310.49, said point being the Southeast corner of said State Lease No. 2453, as amended; thence Southeasterly approximately 826 feet to the point of beginning, **LESS AND EXCEPT** any right, title and interest in lands owned by and not under mineral lease from the State of Louisiana, on behalf of the Jefferson Parish School Board, situated in Section 16, Township 18 South, Range 23 East, Jefferson Parish, Louisiana, contained within the above described tract, containing approximately **243 acres**, all as more particularly outlined on a plat on file in the Office of Mineral Resources, Department of Natural Resources. All bearings, distances and coordinates are based on Louisiana Coordinate System of 1927, (North or South Zone), where applicable.

NOTE: The above description of the Tract nominated for the purpose of acquiring a mineral lease or a geophysical agreement has been provided and corrected, where required, exclusively by the nominating party. Any mineral lease or geophysical agreement selected from this Tract and awarded by the Louisiana State Mineral and Energy Board shall be without warranty of any kind, either express, implied or statutory including, but not limited to, title or the implied warranties of merchantability and fitness for a particular purpose.

An error or omission in the nominating party's Tract description may require that a State mineral lease or geophysical agreement be modified, canceled or abrogated due to the existence of conflicting leases, operating agreements, private claims or other future obligations or conditions within the Tract described. In such case, however, the

Louisiana State Mineral and Energy Board shall not be obligated to refund any consideration paid by the Lessee prior to such modification, cancellation or abrogation including, but not limited to, bonuses, rentals and royalties.

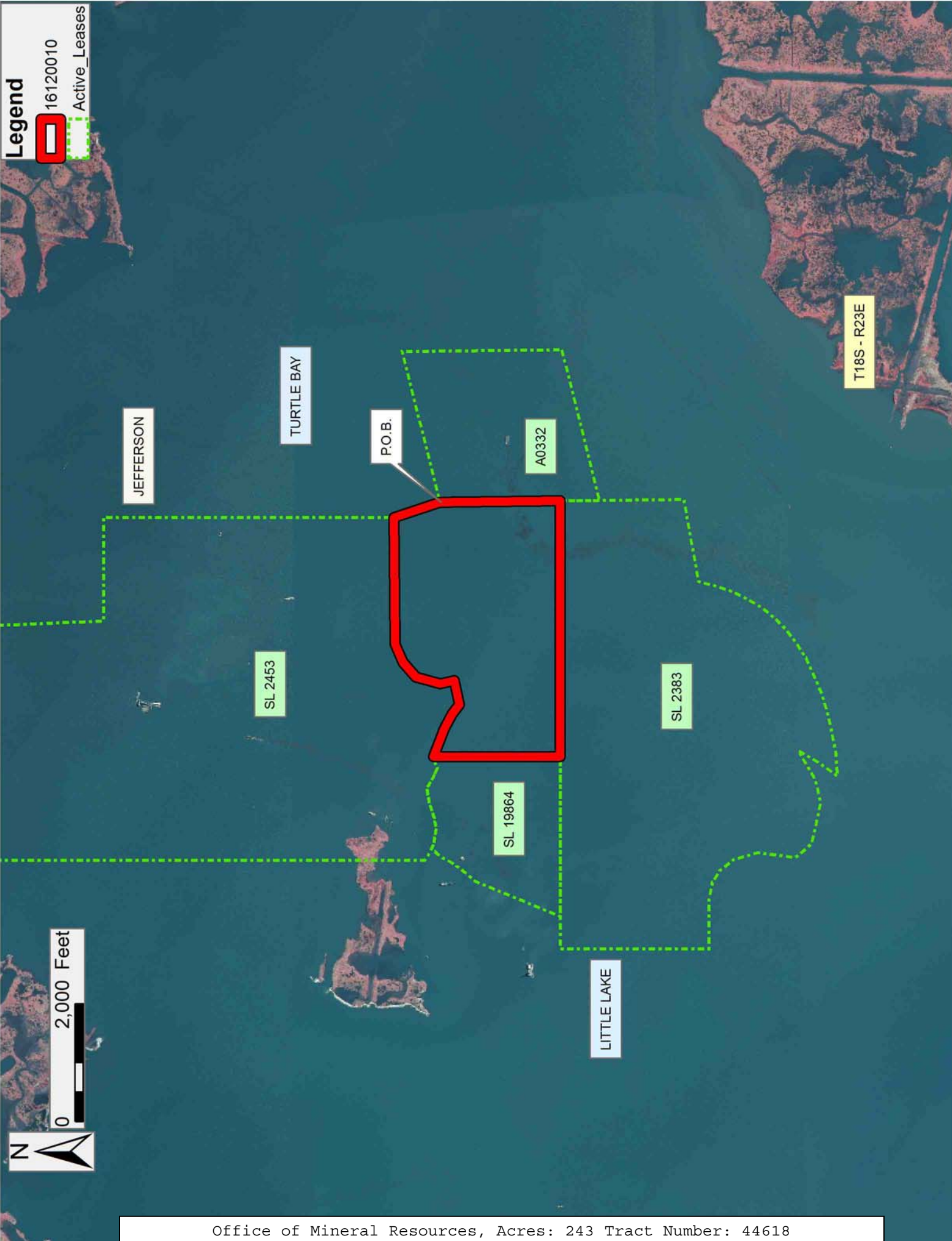
NOTE: The State of Louisiana does hereby reserve, and this lease shall be subject to, the imprescriptible right of surface use in the nature of a servitude in favor of the Department of Natural Resources, including its Offices and Commissions, for the sole purpose of implementing, constructing, servicing and maintaining approved coastal zone management and/or restoration projects. Utilization of any and all rights derived under this lease by the mineral lessee, its agents, successors or assigns, shall not interfere with nor hinder the reasonable surface use by the Department of Natural Resources, its Offices or Commissions, as herein above reserved.

NOTE: This tract is located in an area designated by the Louisiana Legislature or the Wildlife and Fisheries Commission as a Public Oyster Seed Ground, Reservation, or area of Calcasieu or Sabine Lake. Proposed projects occurring in these areas will be evaluated on a case by case basis by Louisiana Department of Wildlife & Fisheries. Modifications to proposed project features including, but not limited to, access routes, well sites, flowlines, and appurtenant structures maybe required by the Louisiana Department of Wildlife and Fisheries. In addition, compensatory mitigation will be required to offset unavoidable habitat impacts.

Applicant: ROBERT A. SCHROEDER, INC.

Bidder	Cash Payment	Price/Acre	Rental	Oil	Gas	Other

Legend
16120010
Active_Leases



TRACT 44619 - Plaquemines Parish, Louisiana

All of the lands now or formerly constituting the beds and bottoms of all water bodies of every nature and description as to which title is vested in the State of Louisiana, together with all islands arising therein and other lands formed by accretion or by reliction, where allowed by law, excepting tax adjudicated lands, and not presently under mineral lease on December 14, 2016, situated in Plaquemines Parish, Louisiana, and more particularly described as follows: Beginning at the Northeast corner of State Lease No. 12499, as amended, having Coordinates of X = 2,475,500.00 and Y = 294,595.67; thence West 3,750.00 feet to the Northwest corner of said State Lease No. 12499 having Coordinates of X = 2,471,750.00 and Y = 294,595.67; thence South 1,748.67 feet to a point being the Southwest corner of said State Lease No. 12499, also being the Northwest corner of State Lease No. 12036, as amended, having Coordinates of X = 2,471,750.00 and Y = 292,846.93; thence South 51 degrees 10 minutes 49 seconds West 2,867.54 feet to Southwest corner of said State Lease No. 12036 having Coordinates of X = 2,469,515.87 and Y = 291,049.37; thence North 89 degrees 28 minutes 07 seconds West 1,090.66 feet to a point having Coordinates of X = 2,468,425.26 and Y = 291,059.49; thence North 10,275.00 feet to a point having Coordinates of X = 2,468,425.26 and Y = 301,334.49; thence East 17,145.18 feet to a point having Coordinates of X = 2,485,570.43 and Y = 301,334.49; thence South 6,738.82 feet to a point having Coordinates of X = 2,485,570.43 and Y = 294,595.67; thence West 10,070.43 feet to the point of beginning, containing approximately **863 acres**, all as more particularly outlined on a plat on file in the Office of Mineral Resources, Department of Natural Resources. All bearings, distances and coordinates are based on Louisiana Coordinate System of 1927, (North or South Zone), where applicable.

NOTE: The above description of the Tract nominated for the purpose of acquiring a mineral lease or a geophysical agreement has been provided and corrected, where required, exclusively by the nominating party. Any mineral lease or geophysical agreement selected from this Tract and awarded by the Louisiana State Mineral and Energy Board shall be without warranty of any kind, either express, implied or statutory including, but not limited to, title or the implied warranties of merchantability and fitness for a particular purpose.

An error or omission in the nominating party's Tract description may require that a State mineral lease or geophysical agreement be modified, canceled or abrogated due to the existence of conflicting leases, operating agreements, private claims or other future obligations or conditions within the Tract described. In such case, however, the Louisiana State Mineral and Energy Board shall not be obligated to refund any consideration paid by the Lessee prior to such modification, cancellation or abrogation including, but not limited to, bonuses, rentals and royalties.

NOTE: The State of Louisiana does hereby reserve, and this lease shall be subject to, the imprescriptible right of surface use in the nature of a servitude in favor of the Department of Natural Resources, including its Offices and Commissions, for the sole purpose of implementing, constructing, servicing and maintaining approved coastal zone management and/or restoration projects. Utilization of any and all rights derived under this lease by the mineral lessee, its agents, successors or assigns, shall not interfere with nor hinder the reasonable surface use by the Department of Natural Resources, its Offices or Commissions, as herein above reserved.

Applicant: OIL LAND SERVICES, INC.

Bidder	Cash Payment	Price/Acre	Rental	Oil	Gas	Other

Legend

16120021
Active_Leases

0 2,500 Feet



PLAQUEMINES

BAY BATISTE

P.O.B.

SL 12499

SL 12036

TRACT 44620 - Plaquemines Parish, Louisiana

All of the lands now or formerly constituting the beds and bottoms of all water bodies of every nature and description as to which title is vested in the State of Louisiana, together with all islands arising therein and other lands formed by accretion or by reliction, where allowed by law, excepting tax adjudicated lands, and not presently under mineral lease on December 14, 2016, situated in Plaquemines Parish, Louisiana, and more particularly described as follows: Beginning at a point having Coordinates of X = 2,485,570.43 and Y = 301,334.49; thence East 10,499.10 feet to a point having Coordinates of X = 2,496,069.53 and Y = 301,334.49; thence South approximately 18,136 feet to a point being the Northeast corner of State Lease No. 2104, as amended; thence Westerly approximately 10,500 feet along the Northern boundary of said State Lease No. 2104 to the Northwest corner of said State Lease No. 2104; thence North approximately 18,273 feet to the point of beginning, **LESS AND EXCEPT** any right, title, and interest in lands currently covered by the Ernest Cockrell, Jr., et al lease recorded in COB 161, Folio 182, under Entry No. 182, as well as, The Moran Corporation, et al lease recorded in COB 148, Folio 25, under Entry No. 12, Plaquemines Parish, Louisiana, contained within the above described tract, containing approximately **784 acres**, all as more particularly outlined on a plat on file in the Office of Mineral Resources, Department of Natural Resources. All bearings, distances and coordinates are based on Louisiana Coordinate System of 1927, (North or South Zone), where applicable.

NOTE: The above description of the Tract nominated for the purpose of acquiring a mineral lease or a geophysical agreement has been provided and corrected, where required, exclusively by the nominating party. Any mineral lease or geophysical agreement selected from this Tract and awarded by the Louisiana State Mineral and Energy Board shall be without warranty of any kind, either express, implied or statutory including, but not limited to, title or the implied warranties of merchantability and fitness for a particular purpose.

An error or omission in the nominating party's Tract description may require that a State mineral lease or geophysical agreement be modified, canceled or abrogated due to the existence of conflicting leases, operating agreements, private claims or other future obligations or conditions within the Tract described. In such case, however, the Louisiana State Mineral and Energy Board shall not be obligated to refund any consideration paid by the Lessee prior to such modification, cancellation or abrogation including, but not limited to, bonuses, rentals and royalties.

NOTE: The State of Louisiana does hereby reserve, and this lease shall be subject to, the imprescriptible right of surface use in the nature of a servitude in favor of the Department of Natural Resources, including its Offices and Commissions, for the sole purpose of implementing, constructing, servicing and maintaining approved coastal zone management

and/or restoration projects. Utilization of any and all rights derived under this lease by the mineral lessee, its agents, successors or assigns, shall not interfere with nor hinder the reasonable surface use by the Department of Natural Resources, its Offices or Commissions, as herein above reserved.

Applicant: OIL LAND SERVICES, INC.

Bidder	Cash Payment	Price/Acre	Rental	Oil	Gas	Other

Legend
16120023
Active_Leases

0 3,000 Feet
N

TWO SISTERS BAYOU

P.O.B.

BAY SANSBOIS

BAYOU DULAC

PLAQUEMINES

LOST BAYOU

SL 2104



TRACT 44621 - Plaquemines Parish, Louisiana

All of the lands now or formerly constituting the beds and bottoms of all water bodies of every nature and description as to which title is vested in the State of Louisiana, together with all islands arising therein and other lands formed by accretion or by reliction, where allowed by law, excepting tax adjudicated lands, and not presently under mineral lease on December 14, 2016, situated in Plaquemines Parish, Louisiana, and more particularly described as follows: Beginning at a point having Coordinates of X = 2,485,570.43 and Y = 294,595.67; thence South approximately 11,535 feet to the Northwest corner of State Lease No. 2104; thence along the Western boundary of said State Lease No. 2104 Southerly approximately 3,785 feet to a point on the Western boundary of said State Lease No. 2104 being the Northeast corner of State Lease No. 2028, as amended; thence along the Northern boundary of said State Lease No. 2028 Westerly approximately 8,272 feet to the Northernmost Northwest corner of said State Lease No. 2028; thence North 01 degrees 25 minutes 04 seconds East approximately 2,899 feet to a point being the Southeast corner of State Lease No. 21675 having Coordinates of X = 2,477,423.72 and Y = 281,909.88; thence along the Eastern boundary of said State Lease No. 21675 North 3,789.77 feet to a point being the Northeast corner of said State Lease No. 21675 having Coordinates of X = 2,477,423.72 and Y = 285,699.65; thence along the Northern boundary of said State Lease No. 21675 West 3,871.96 feet to a point having Coordinates of X = 2,473,551.76 and Y = 285,699.65; thence North 1,481.91 feet to a point being the Southeast corner of State Lease No. 21364 having Coordinates of X = 2,473,551.76 and Y = 287,181.56; thence along the Eastern boundary of said State Lease No. 21364 the following courses and distances: North 57 degrees 53 minutes 10 seconds West 1,007.07 feet to a point having Coordinates of X = 2,472,698.78 and Y = 287,716.92, North 60 degrees 23 minutes 08 seconds West 1,200.85 feet to a point having Coordinates of X = 2,471,654.80 and Y = 288,310.33, North 58 degrees 28 minutes 44 seconds West 542.76 feet to a point having Coordinates of X = 2,471,192.12 and Y = 288,594.10, North 57 degrees 52 minutes 10 seconds West 489.44 feet to a point having Coordinates of X = 2,470,777.65 and Y = 288,854.40, North 47 degrees 40 minutes 58 seconds West 1,085.16 feet to a point having Coordinates of X = 2,469,975.25 and Y = 289,584.97, North 55 degrees 30 minutes 19 seconds West 526.58 feet to a point having Coordinates of X = 2,469,541.25 and Y = 289,883.19, North 56 degrees 43 minutes 48 seconds West 881.36 feet to a point having Coordinates of X = 2,468,804.35 and Y = 290,366.69, North 58 degrees 00 minutes 18 seconds West 446.98 feet to a corner having Coordinates of X = 2,468,425.27 and Y = 290,603.52; thence North 455.97 feet to a point having Coordinates of X = 2,468,425.27 and Y = 291,059.49; thence South 89 degrees 28 minutes 07 seconds East 1,090.65 feet to a point being the Southwest corner of State Lease No. 12036, as amended, having Coordinates of X = 2,469,515.87 and Y = 291,049.37; thence along the Southern boundary of said State Lease No. 12036 South 55 degrees 21 minutes 12 seconds East 7,274.00 feet to a point being the Southeast corner of State Lease No. 12036 having Coordinates of X = 2,475,500.00 and Y = 286,914.00; thence along the Eastern boundary of said State Lease No.

12036 North 5,932.93 feet to a point being the Northeast corner of said State Lease No. 12036 and also being the Southeast corner of State Lease No. 12499, as amended, having Coordinates of X = 2,475,500.00 and Y = 292,846.93; thence along the Eastern boundary of said State Lease No. 12499 North 1,748.74 feet to a point being the Northeast corner of said State Lease No. 12499 having Coordinates of X = 2,475,500.00 and Y = 294,595.67; thence East 10,070.43 feet to the point of beginning, **LESS AND EXCEPT** any right, title, and interest in lands owned by and not under lease from the State of Louisiana, on behalf of the Plaquemines Parish School Board, situated in Section 16, Township 19 South, Range 26 East, Plaquemines Parish, Louisiana, contained within the above described tract, and **LESS AND EXCEPT** any right, title, and interest in lands currently covered by the Ernest Cockrell, Jr., et al lease recorded in COB 161, Folio 182, under Entry No. 182, as well as, The Moran Corporation, et al lease recorded in COB 148, Folio 25, under Entry No. 12, Plaquemines Parish, Louisiana, contained within the above described tract, containing approximately **1,555 acres**, all as more particularly outlined on a plat on file in the Office of Mineral Resources, Department of Natural Resources. All bearings, distances and coordinates are based on Louisiana Coordinate System of 1927, (North or South Zone), where applicable.

NOTE: The above description of the Tract nominated for the purpose of acquiring a mineral lease or a geophysical agreement has been provided and corrected, where required, exclusively by the nominating party. Any mineral lease or geophysical agreement selected from this Tract and awarded by the Louisiana State Mineral and Energy Board shall be without warranty of any kind, either express, implied or statutory including, but not limited to, title or the implied warranties of merchantability and fitness for a particular purpose.

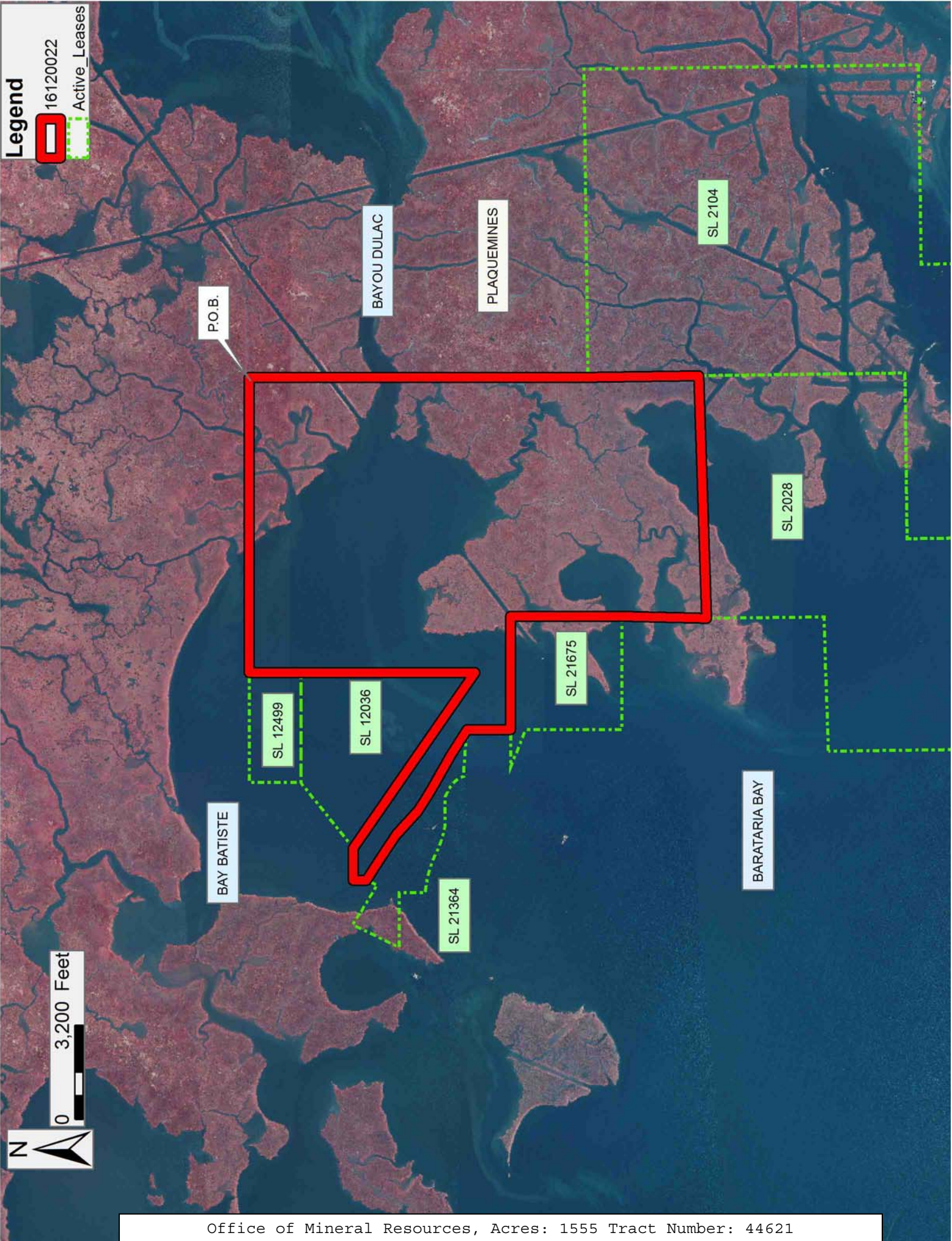
An error or omission in the nominating party's Tract description may require that a State mineral lease or geophysical agreement be modified, canceled or abrogated due to the existence of conflicting leases, operating agreements, private claims or other future obligations or conditions within the Tract described. In such case, however, the Louisiana State Mineral and Energy Board shall not be obligated to refund any consideration paid by the Lessee prior to such modification, cancellation or abrogation including, but not limited to, bonuses, rentals and royalties.

NOTE: The State of Louisiana does hereby reserve, and this lease shall be subject to, the imprescriptible right of surface use in the nature of a servitude in favor of the Department of Natural Resources, including its Offices and Commissions, for the sole purpose of implementing, constructing, servicing and maintaining approved coastal zone management and/or restoration projects. Utilization of any and all rights derived under this lease by the mineral lessee, its agents, successors or assigns, shall not interfere with nor hinder the reasonable surface use by the

Department of Natural Resources, its Offices or Commissions, as herein above reserved.

Applicant: OIL LAND SERVICES, INC.

Bidder	Cash Payment	Price/Acre	Rental	Oil	Gas	Other



TRACT 44622 - Plaquemines Parish, Louisiana

All of the lands now or formerly constituting the beds and bottoms of all water bodies of every nature and description as to which title is vested in the State of Louisiana, together with all islands arising therein and other lands formed by accretion or by reliction, where allowed by law, excepting tax adjudicated lands, and not presently under mineral lease on December 14, 2016, situated in Plaquemines Parish, Louisiana, and more particularly described as follows: Beginning at a point having Coordinates of X = 2,557,248.59 and Y = 294,385.49, said point being the Northwest corner of State Lease No. 21380; thence South 7,500 feet along the Western boundary of said State Lease No. 21380 to a point having Coordinates of X = 2,557,248.59 and Y = 286,885.49, said point being the Southwest corner of said State Lease No. 21380, said point also being the Northwest corner of State Lease No. 21381; thence South 2,610.73 feet along the Western boundary of said State Lease No. 21381 to a point having Coordinates of X = 2,557,248.59 and Y = 284,274.76, said point being the Southwest corner of said State Lease No. 21381; thence West 10,416.75 feet to a point having Coordinates of X = 2,546,831.84 and Y = 284,274.76; thence North approximately 7,504 feet to a point being the Southernmost corner of State Lease No. 1794, as amended; thence Northeasterly approximately 3,227 feet along the Eastern boundary of said State Lease No. 1794, as amended, to a point having a Coordinate of Y = 294,385.49; thence East approximately 8,514 feet to the point of beginning, **LESS AND EXCEPT** any right, title, and interest in lands owned by and not under lease from the State of Louisiana, on behalf of the Plaquemines Parish School Board, situated in Section 16, Township 18 South, Range 16 East, Plaquemines Parish, Louisiana, contained within the above described tract, containing approximately **627 acres**, all as more particularly outlined on a plat on file in the Office of Mineral Resources, Department of Natural Resources. All bearings, distances and coordinates are based on Louisiana Coordinate System of 1927, (North or South Zone), where applicable.

NOTE: The above description of the Tract nominated for the purpose of acquiring a mineral lease or a geophysical agreement has been provided and corrected, where required, exclusively by the nominating party. Any mineral lease or geophysical agreement selected from this Tract and awarded by the Louisiana State Mineral and Energy Board shall be without warranty of any kind, either express, implied or statutory including, but not limited to, title or the implied warranties of merchantability and fitness for a particular purpose.

An error or omission in the nominating party's Tract description may require that a State mineral lease or geophysical agreement be modified, canceled or abrogated due to the existence of conflicting leases, operating agreements, private claims or other future obligations or conditions within the Tract described. In such case, however, the Louisiana State Mineral and Energy Board shall not be obligated to refund any consideration paid by the Lessee prior to such modification,

cancellation or abrogation including, but not limited to, bonuses, rentals and royalties.

NOTE: The State of Louisiana does hereby reserve, and this lease shall be subject to, the imprescriptible right of surface use in the nature of a servitude in favor of the Department of Natural Resources, including its Offices and Commissions, for the sole purpose of implementing, constructing, servicing and maintaining approved coastal zone management and/or restoration projects. Utilization of any and all rights derived under this lease by the mineral lessee, its agents, successors or assigns, shall not interfere with nor hinder the reasonable surface use by the Department of Natural Resources, its Offices or Commissions, as herein above reserved.

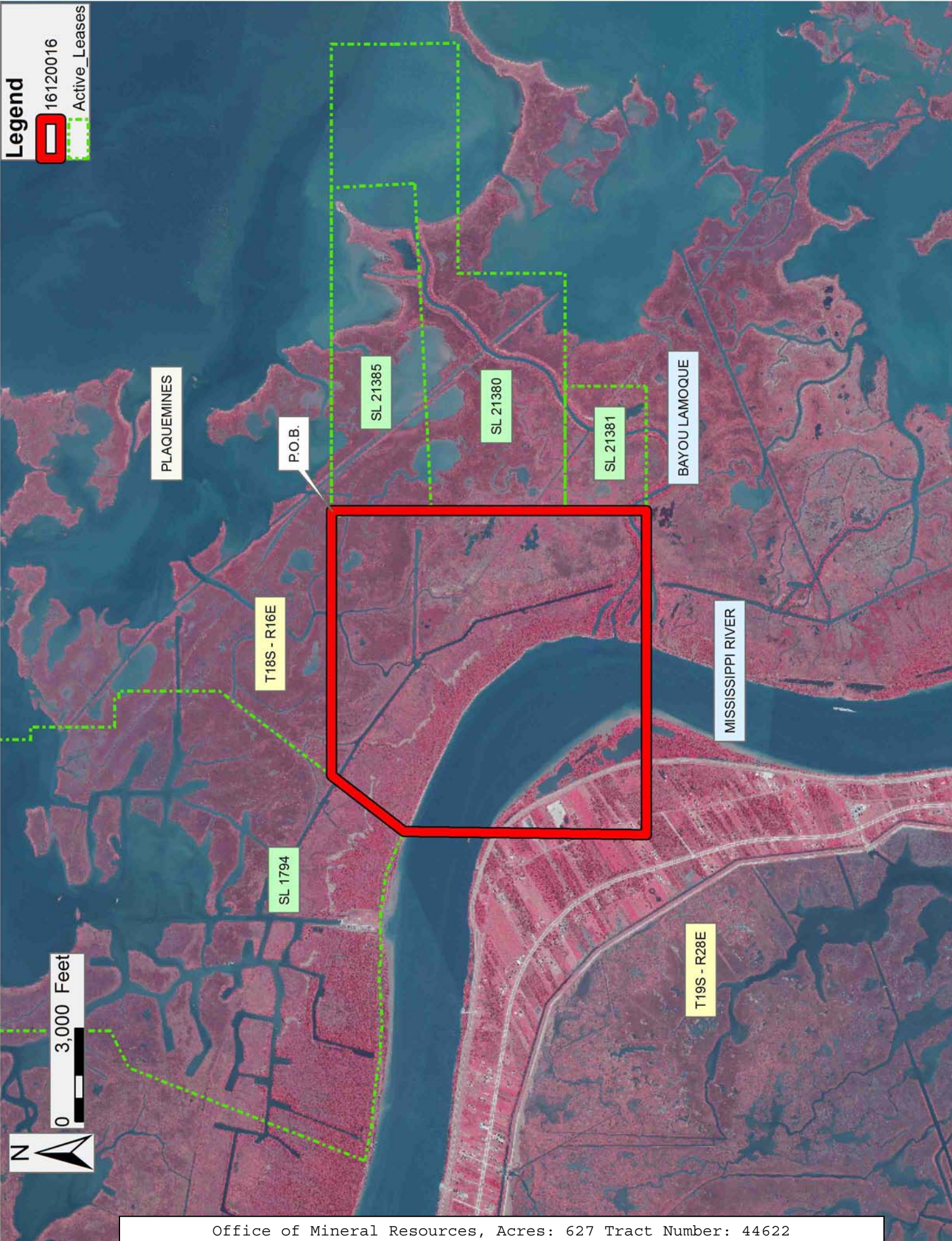
Applicant: ROBERT A. SCHROEDER, INC

Bidder	Cash Payment	Price/Acre	Rental	Oil	Gas	Other

Legend

16120016

Active_Leases



TRACT 44623 - Plaquemines Parish, Louisiana

All of the lands now or formerly constituting the beds and bottoms of all water bodies of every nature and description as to which title is vested in the State of Louisiana, together with all islands arising therein and other lands formed by accretion or by reliction, where allowed by law, excepting tax adjudicated lands, and not presently under mineral lease on December 14, 2016, situated in Plaquemines Parish, Louisiana, and more particularly described as follows: Beginning at a point having Coordinates of X = 2,560,448.59 and Y = 282,585.49, said point being the Southwest corner of State Lease No. 21476; thence South 4,235.49 feet to a point having Coordinates of X = 2,560,448.59 and Y = 278,350.00; thence West 13,616.75 feet to a point having Coordinates of X = 2,546,831.84 and Y = 278,350.00; thence North 5,924.76 feet to a point having Coordinates of X = 2,546,831.84 and Y = 284,274.76; thence East 10,416.75 feet to a point having Coordinates of X = 2,557,248.59 and Y = 284,274.76, said point being the Southwest corner of State Lease No. 21381; thence East 3,200.00 feet along the Southern boundary of said State Lease No. 21381 to a point having Coordinates of X = 2,560,448.59 and Y = 284,274.76, said point being the Northwest corner of said State Lease No. 21476; thence South 1,689.27 feet along the Western boundary of said State Lease No. 21476 to the point of beginning, containing approximately **435 acres**, all as more particularly outlined on a plat on file in the Office of Mineral Resources, Department of Natural Resources. All bearings, distances and coordinates are based on Louisiana Coordinate System of 1927, (North or South Zone), where applicable.

NOTE: The above description of the Tract nominated for the purpose of acquiring a mineral lease or a geophysical agreement has been provided and corrected, where required, exclusively by the nominating party. Any mineral lease or geophysical agreement selected from this Tract and awarded by the Louisiana State Mineral and Energy Board shall be without warranty of any kind, either express, implied or statutory including, but not limited to, title or the implied warranties of merchantability and fitness for a particular purpose.

An error or omission in the nominating party's Tract description may require that a State mineral lease or geophysical agreement be modified, canceled or abrogated due to the existence of conflicting leases, operating agreements, private claims or other future obligations or conditions within the Tract described. In such case, however, the Louisiana State Mineral and Energy Board shall not be obligated to refund any consideration paid by the Lessee prior to such modification, cancellation or abrogation including, but not limited to, bonuses, rentals and royalties.

NOTE: The State of Louisiana does hereby reserve, and this lease shall be subject to, the imprescriptible right of surface use in the nature of a servitude in favor of the Department of Natural Resources, including its Offices and Commissions, for the sole purpose of implementing,

constructing, servicing and maintaining approved coastal zone management and/or restoration projects. Utilization of any and all rights derived under this lease by the mineral lessee, its agents, successors or assigns, shall not interfere with nor hinder the reasonable surface use by the Department of Natural Resources, its Offices or Commissions, as herein above reserved.

Applicant: ROBERT A. SCHROEDER, INC

Bidder	Cash Payment	Price/Acre	Rental	Oil	Gas	Other

Legend
16120017
Active_Leases

