

TRACT 44457 - Terrebonne Parish School Board - Terrebonne Parish, Louisiana

The State Mineral and Energy Board acting on behalf of the Terrebonne Parish School Board, pursuant to Resolution(s) adopted by that (those) body(ies) and in accordance with Louisiana Revised Statutes 30:121-136 and 151-156, as amended, and Article XIV, Section 16(A)(9) and (B) of the Louisiana Constitution of 1974, as same may be continued and promulgated in proper statutory form and, further, amended from time to time, advertises the lands not under mineral lease on December 9, 2015, excluding the beds and bottoms of all navigable water bodies located within the following: All or a portion of Section 16, Township 19 South, Range 14 East in Terrebonne Parish, Louisiana, containing approximately **669.78 acres**, all as more particularly outlined on a plat on file in the Office of Mineral Resources, Department of Natural Resources. All bearings, distances and coordinates are based on Louisiana Coordinate System of 1927, (North or South Zone).

NOTE: The above description of the Tract nominated for the purpose of acquiring a mineral lease or a geophysical agreement has been provided and corrected, where required, exclusively by the nominating party. Any mineral lease or geophysical agreement selected from this Tract and awarded by the Louisiana State Mineral and Energy Board shall be without warranty of any kind, either express, implied or statutory including, but not limited to, title or the implied warranties of merchantability and fitness for a particular purpose.

An error or omission in the nominating party's Tract description may require that a State mineral lease or geophysical agreement be modified, canceled or abrogated due to the existence of conflicting leases, operating agreements, private claims or other future obligations or conditions within the Tract described. In such case, however, the Louisiana State Mineral and Energy Board shall not be obligated to refund any consideration paid by the Lessee prior to such modification, cancellation or abrogation including, but not limited to, bonuses, rentals and royalties.

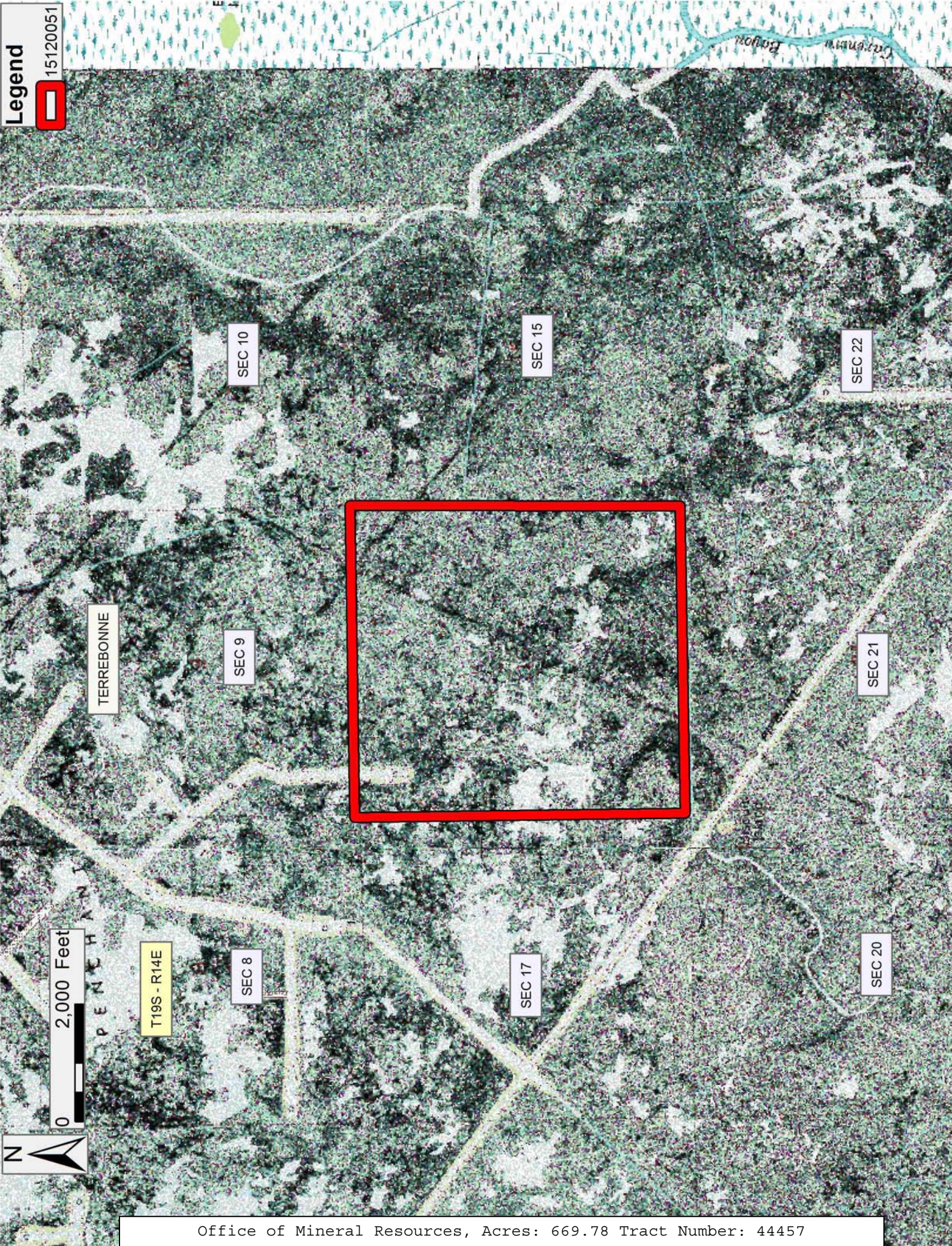
NOTE: The failure of the Lessee to submit to the Lessor, at the office of the Terrebonne Parish School Board, for approval, the document intended to transfer, sublease or assign any right or obligation of the Lessee under this lease, within sixty (60) days after the effective date of any such transfer, sublease or assignment, shall subject the Lessee to pay to the Lessor any damages the Lessor may suffer, but in no event shall such damages be deemed to be less than One Hundred (\$100.00) Dollars per day for each day the Lessee fails to submit any such document to the Lessor for approval.

NOTE: The Terrebonne Parish School Board will require a minimum bonus of \$300 per acre and a minimum royalty of 25%.

NOTE: The State of Louisiana does hereby reserve, and this lease shall be subject to, the imprescriptible right of surface use in the nature of a servitude in favor of the Department of Natural Resources, including its Offices and Commissions, for the sole purpose of implementing, constructing, servicing and maintaining approved coastal zone management and/or restoration projects. Utilization of any and all rights derived under this lease by the mineral lessee, its agents, successors or assigns, shall not interfere with nor hinder the reasonable surface use by the Department of Natural Resources, its Offices or Commissions, as herein above reserved.

Applicant: ACADIAN LAND SERVICES, L.L.C. to Agency and by Resolution from the Terrebonne Parish School Board authorizing the Mineral Board to act in its behalf

Bidder	Cash Payment	Price/Acre	Rental	Oil	Gas	Other



TRACT 44458 - Terrebonne Parish School Board - Terrebonne Parish, Louisiana

The State Mineral and Energy Board acting on behalf of the Terrebonne Parish School Board, pursuant to Resolution(s) adopted by that (those) body(ies) and in accordance with Louisiana Revised Statutes 30:121-136 and 151-156, as amended, and Article XIV, Section 16(A)(9) and (B) of the Louisiana Constitution of 1974, as same may be continued and promulgated in proper statutory form and, further, amended from time to time, advertises the lands not under mineral lease on December 9, 2015, excluding the beds and bottoms of all navigable water bodies located within the following: All or a portion of Section 16, Township 20 South, Range 12 East in Terrebonne Parish, Louisiana, containing approximately **285.05 acres**, all as more particularly outlined on a plat on file in the Office of Mineral Resources, Department of Natural Resources. All bearings, distances and coordinates are based on Louisiana Coordinate System of 1927, (North or South Zone).

NOTE: The above description of the Tract nominated for the purpose of acquiring a mineral lease or a geophysical agreement has been provided and corrected, where required, exclusively by the nominating party. Any mineral lease or geophysical agreement selected from this Tract and awarded by the Louisiana State Mineral and Energy Board shall be without warranty of any kind, either express, implied or statutory including, but not limited to, title or the implied warranties of merchantability and fitness for a particular purpose.

An error or omission in the nominating party's Tract description may require that a State mineral lease or geophysical agreement be modified, canceled or abrogated due to the existence of conflicting leases, operating agreements, private claims or other future obligations or conditions within the Tract described. In such case, however, the Louisiana State Mineral and Energy Board shall not be obligated to refund any consideration paid by the Lessee prior to such modification, cancellation or abrogation including, but not limited to, bonuses, rentals and royalties.

NOTE: The failure of the Lessee to submit to the Lessor, at the office of the Terrebonne Parish School Board, for approval, the document intended to transfer, sublease or assign any right or obligation of the Lessee under this lease, within sixty (60) days after the effective date of any such transfer, sublease or assignment, shall subject the Lessee to pay to the Lessor any damages the Lessor may suffer, but in no event shall such damages be deemed to be less than One Hundred (\$100.00) Dollars per day for each day the Lessee fails to submit any such document to the Lessor for approval.

NOTE: The Terrebonne Parish School Board will require a minimum bonus of \$300 per acre and a minimum royalty of 25%.

NOTE: The State of Louisiana does hereby reserve, and this lease shall be subject to, the imprescriptible right of surface use in the nature of a servitude in favor of the Department of Natural Resources, including its Offices and Commissions, for the sole purpose of implementing, constructing, servicing and maintaining approved coastal zone management and/or restoration projects. Utilization of any and all rights derived under this lease by the mineral lessee, its agents, successors or assigns, shall not interfere with nor hinder the reasonable surface use by the Department of Natural Resources, its Offices or Commissions, as herein above reserved.

Applicant: ACADIAN LAND SERVICES, L.L.C. to Agency and by Resolution from the Terrebonne Parish School Board authorizing the Mineral Board to act in its behalf

Bidder	Cash Payment	Price/Acre	Rental	Oil	Gas	Other

Legend



15120052



0 2,000 Feet

TERREBONNE

T20S - R12E

SEC 10

SEC 9

SEC 8

SEC 15

FOURLEAGUE BAY

SEC 22

SEC 21

CLAM LAKE

SEC 17

SEC 20

TRACT 44459 - Terrebonne Parish School Board - Terrebonne Parish, Louisiana

The State Mineral and Energy Board acting on behalf of the Terrebonne Parish School Board, pursuant to Resolution(s) adopted by that (those) body(ies) and in accordance with Louisiana Revised Statutes 30:121-136 and 151-156, as amended, and Article XIV, Section 16(A)(9) and (B) of the Louisiana Constitution of 1974, as same may be continued and promulgated in proper statutory form and, further, amended from time to time, advertises the lands not under mineral lease on December 9, 2015, excluding the beds and bottoms of all navigable water bodies located within the following: All or a portion of Section 16, Township 20 South, Range 13 East in Terrebonne Parish, Louisiana, containing approximately **433.86 acres**, all as more particularly outlined on a plat on file in the Office of Mineral Resources, Department of Natural Resources. All bearings, distances and coordinates are based on Louisiana Coordinate System of 1927, (North or South Zone).

NOTE: The above description of the Tract nominated for the purpose of acquiring a mineral lease or a geophysical agreement has been provided and corrected, where required, exclusively by the nominating party. Any mineral lease or geophysical agreement selected from this Tract and awarded by the Louisiana State Mineral and Energy Board shall be without warranty of any kind, either express, implied or statutory including, but not limited to, title or the implied warranties of merchantability and fitness for a particular purpose.

An error or omission in the nominating party's Tract description may require that a State mineral lease or geophysical agreement be modified, canceled or abrogated due to the existence of conflicting leases, operating agreements, private claims or other future obligations or conditions within the Tract described. In such case, however, the Louisiana State Mineral and Energy Board shall not be obligated to refund any consideration paid by the Lessee prior to such modification, cancellation or abrogation including, but not limited to, bonuses, rentals and royalties.

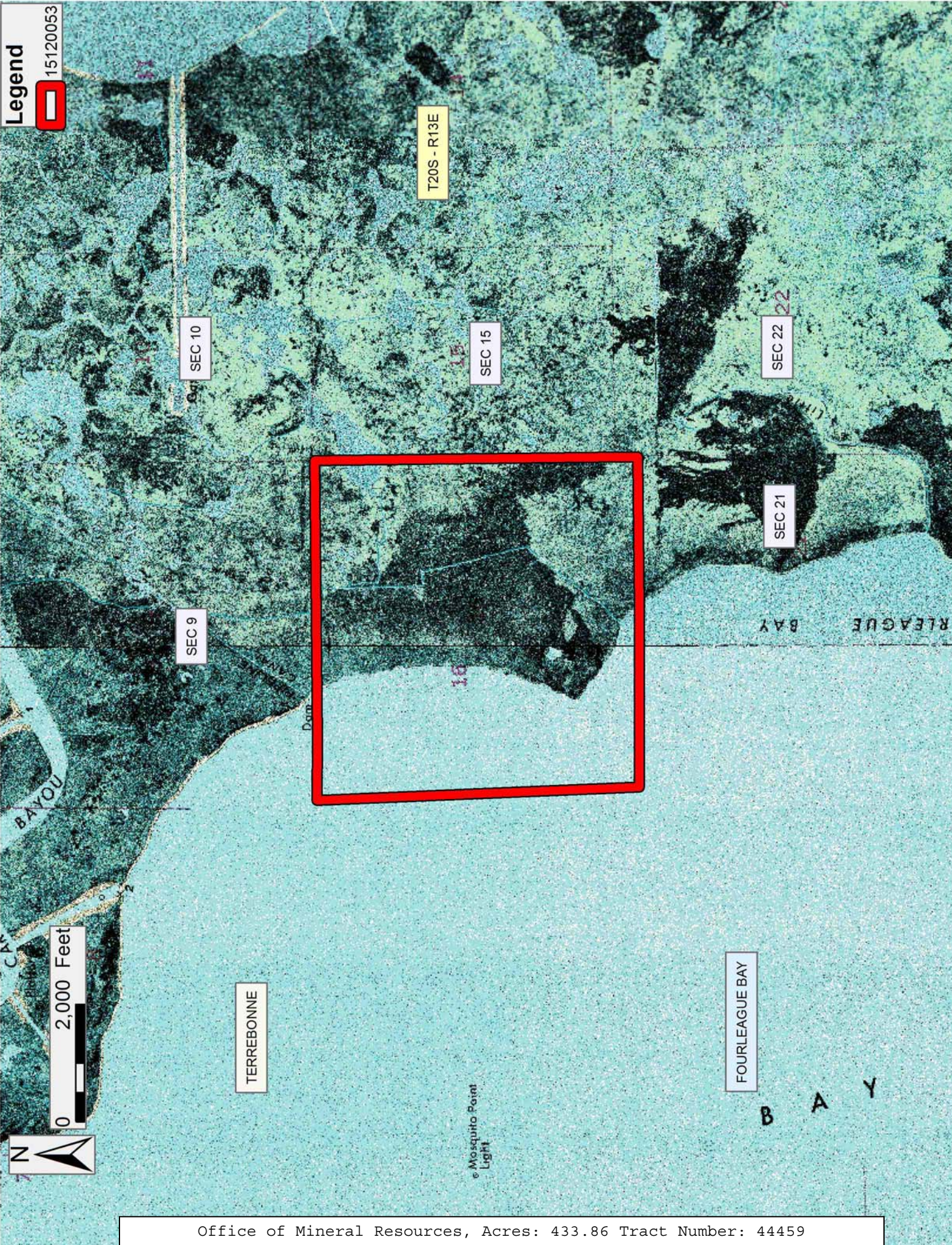
NOTE: The failure of the Lessee to submit to the Lessor, at the office of the Terrebonne Parish School Board, for approval, the document intended to transfer, sublease or assign any right or obligation of the Lessee under this lease, within sixty (60) days after the effective date of any such transfer, sublease or assignment, shall subject the Lessee to pay to the Lessor any damages the Lessor may suffer, but in no event shall such damages be deemed to be less than One Hundred (\$100.00) Dollars per day for each day the Lessee fails to submit any such document to the Lessor for approval.

NOTE: The Terrebonne Parish School Board will require a minimum bonus of \$300 per acre and a minimum royalty of 25%.

NOTE: The State of Louisiana does hereby reserve, and this lease shall be subject to, the imprescriptible right of surface use in the nature of a servitude in favor of the Department of Natural Resources, including its Offices and Commissions, for the sole purpose of implementing, constructing, servicing and maintaining approved coastal zone management and/or restoration projects. Utilization of any and all rights derived under this lease by the mineral lessee, its agents, successors or assigns, shall not interfere with nor hinder the reasonable surface use by the Department of Natural Resources, its Offices or Commissions, as herein above reserved.

Applicant: ACADIAN LAND SERVICES, L.L.C. to Agency and by Resolution from the Terrebonne Parish School Board authorizing the Mineral Board to act in its behalf

Bidder	Cash Payment	Price/Acre	Rental	Oil	Gas	Other



Legend
15120053

T20S - R13E

SEC 10

SEC 15

SEC 22

SEC 9

SEC 21

FOURLEAGUE BAY

BAYOU

TERREBONNE

FOURLEAGUE BAY

B A Y

Mosquito Point Light

0 2,000 Feet



TRACT 44460 - Terrebonne Parish School Board - Terrebonne Parish, Louisiana

The State Mineral and Energy Board acting on behalf of the Terrebonne Parish School Board, pursuant to Resolution(s) adopted by that (those) body(ies) and in accordance with Louisiana Revised Statutes 30:121-136 and 151-156, as amended, and Article XIV, Section 16(A)(9) and (B) of the Louisiana Constitution of 1974, as same may be continued and promulgated in proper statutory form and, further, amended from time to time, advertises the lands not under mineral lease on December 9, 2015, excluding the beds and bottoms of all navigable water bodies located within the following: All or a portion of Section 16, Township 20 South, Range 14 East in Terrebonne Parish, Louisiana, containing approximately **341.70 acres**, all as more particularly outlined on a plat on file in the Office of Mineral Resources, Department of Natural Resources. All bearings, distances and coordinates are based on Louisiana Coordinate System of 1927, (North or South Zone).

NOTE: The above description of the Tract nominated for the purpose of acquiring a mineral lease or a geophysical agreement has been provided and corrected, where required, exclusively by the nominating party. Any mineral lease or geophysical agreement selected from this Tract and awarded by the Louisiana State Mineral and Energy Board shall be without warranty of any kind, either express, implied or statutory including, but not limited to, title or the implied warranties of merchantability and fitness for a particular purpose.

An error or omission in the nominating party's Tract description may require that a State mineral lease or geophysical agreement be modified, canceled or abrogated due to the existence of conflicting leases, operating agreements, private claims or other future obligations or conditions within the Tract described. In such case, however, the Louisiana State Mineral and Energy Board shall not be obligated to refund any consideration paid by the Lessee prior to such modification, cancellation or abrogation including, but not limited to, bonuses, rentals and royalties.

NOTE: The failure of the Lessee to submit to the Lessor, at the office of the Terrebonne Parish School Board, for approval, the document intended to transfer, sublease or assign any right or obligation of the Lessee under this lease, within sixty (60) days after the effective date of any such transfer, sublease or assignment, shall subject the Lessee to pay to the Lessor any damages the Lessor may suffer, but in no event shall such damages be deemed to be less than One Hundred (\$100.00) Dollars per day for each day the Lessee fails to submit any such document to the Lessor for approval.

NOTE: The Terrebonne Parish School Board will require a minimum bonus of \$300 per acre and a minimum royalty of 25%.

NOTE: The State of Louisiana does hereby reserve, and this lease shall be subject to, the imprescriptible right of surface use in the nature of a servitude in favor of the Department of Natural Resources, including its Offices and Commissions, for the sole purpose of implementing, constructing, servicing and maintaining approved coastal zone management and/or restoration projects. Utilization of any and all rights derived under this lease by the mineral lessee, its agents, successors or assigns, shall not interfere with nor hinder the reasonable surface use by the Department of Natural Resources, its Offices or Commissions, as herein above reserved.

Applicant: ACADIAN LAND SERVICES, L.L.C. to Agency and by Resolution from the Terrebonne Parish School Board authorizing the Mineral Board to act in its behalf

Bidder	Cash Payment	Price/Acre	Rental	Oil	Gas	Other

Legend

15120054



T20S - R14E

TRACT 44461 - Terrebonne Parish School Board - Terrebonne Parish, Louisiana

The State Mineral and Energy Board acting on behalf of the Terrebonne Parish School Board, pursuant to Resolution(s) adopted by that (those) body(ies) and in accordance with Louisiana Revised Statutes 30:121-136 and 151-156, as amended, and Article XIV, Section 16(A)(9) and (B) of the Louisiana Constitution of 1974, as same may be continued and promulgated in proper statutory form and, further, amended from time to time, advertises the lands not under mineral lease on December 9, 2015, excluding the beds and bottoms of all navigable water bodies located within the following: All or a portion of Section 16, Township 21 South, Range 14 East in Terrebonne Parish, Louisiana, containing approximately **189.44 acres**, all as more particularly outlined on a plat on file in the Office of Mineral Resources, Department of Natural Resources. All bearings, distances and coordinates are based on Louisiana Coordinate System of 1927, (North or South Zone).

NOTE: The above description of the Tract nominated for the purpose of acquiring a mineral lease or a geophysical agreement has been provided and corrected, where required, exclusively by the nominating party. Any mineral lease or geophysical agreement selected from this Tract and awarded by the Louisiana State Mineral and Energy Board shall be without warranty of any kind, either express, implied or statutory including, but not limited to, title or the implied warranties of merchantability and fitness for a particular purpose.

An error or omission in the nominating party's Tract description may require that a State mineral lease or geophysical agreement be modified, canceled or abrogated due to the existence of conflicting leases, operating agreements, private claims or other future obligations or conditions within the Tract described. In such case, however, the Louisiana State Mineral and Energy Board shall not be obligated to refund any consideration paid by the Lessee prior to such modification, cancellation or abrogation including, but not limited to, bonuses, rentals and royalties.

NOTE: The failure of the Lessee to submit to the Lessor, at the office of the Terrebonne Parish School Board, for approval, the document intended to transfer, sublease or assign any right or obligation of the Lessee under this lease, within sixty (60) days after the effective date of any such transfer, sublease or assignment, shall subject the Lessee to pay to the Lessor any damages the Lessor may suffer, but in no event shall such damages be deemed to be less than One Hundred (\$100.00) Dollars per day for each day the Lessee fails to submit any such document to the Lessor for approval.

NOTE: The Department of Wildlife and Fisheries has designated certain areas in the coastal waters of the State of Louisiana as Oyster Seed Bed Areas. The exact location of those Seed Bed Areas must be obtained from

the Department of Wildlife and Fisheries and any work done under a mineral lease from the State of Louisiana may necessarily be conducted in conformity with the rules and regulations promulgated by the said Department of Wildlife and Fisheries for Oyster Seed Bed Areas.

NOTE: The Terrebonne Parish School Board will require a minimum bonus of \$300 per acre and a minimum royalty of 25%.

NOTE: The State of Louisiana does hereby reserve, and this lease shall be subject to, the imprescriptible right of surface use in the nature of a servitude in favor of the Department of Natural Resources, including its Offices and Commissions, for the sole purpose of implementing, constructing, servicing and maintaining approved coastal zone management and/or restoration projects. Utilization of any and all rights derived under this lease by the mineral lessee, its agents, successors or assigns, shall not interfere with nor hinder the reasonable surface use by the Department of Natural Resources, its Offices or Commissions, as herein above reserved.

Applicant: ACADIAN LAND SERVICES, L.L.C. to Agency and by Resolution from the Terrebonne Parish School Board authorizing the Mineral Board to act in its behalf

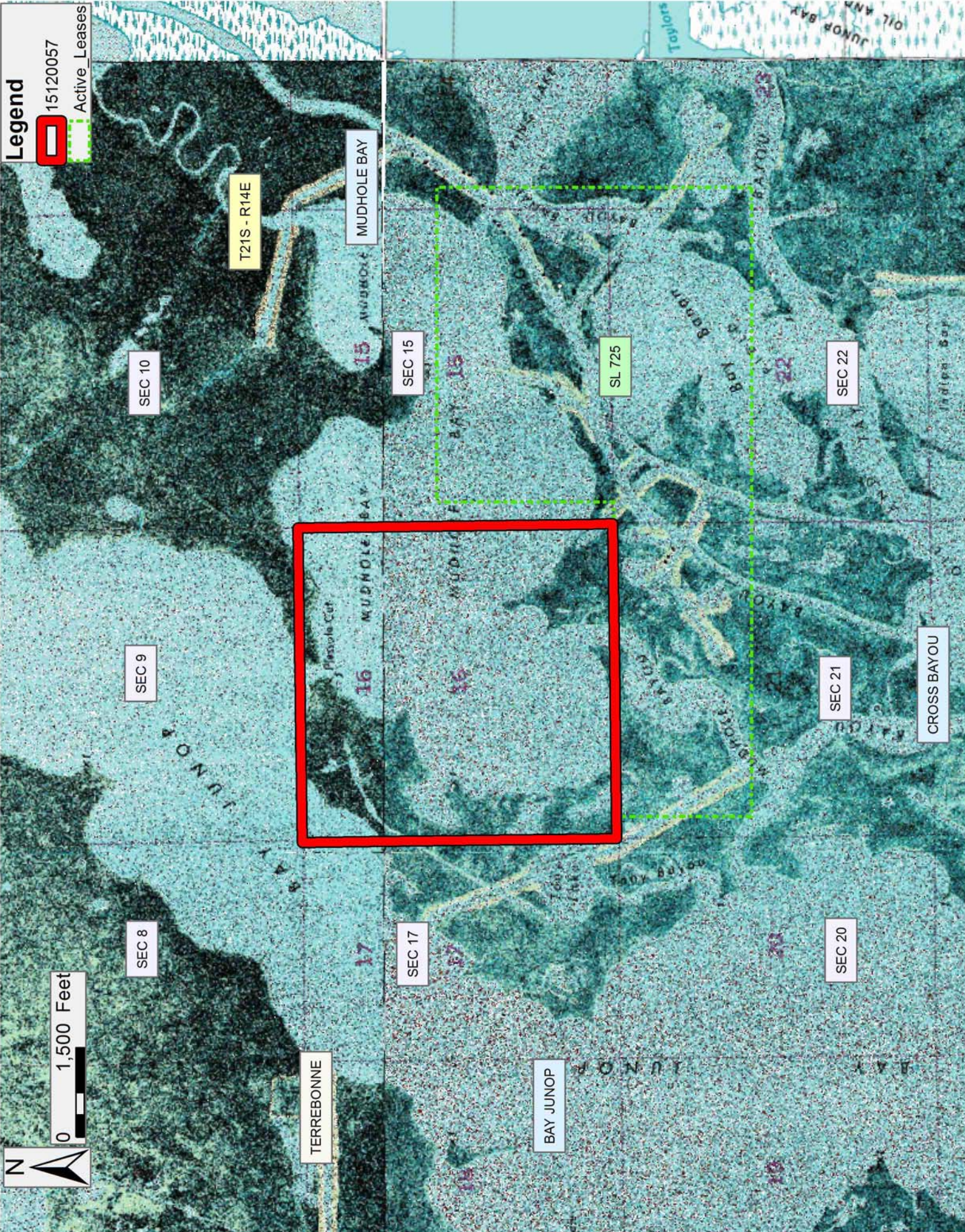
Bidder	Cash Payment	Price/Acre	Rental	Oil	Gas	Other

Legend

15120057

Active_Leases

0 1,500 Feet



TRACT 44462 - Terrebonne Parish School Board - Terrebonne Parish, Louisiana

The State Mineral and Energy Board acting on behalf of the Terrebonne Parish School Board, pursuant to Resolution(s) adopted by that (those) body(ies) and in accordance with Louisiana Revised Statutes 30:121-136 and 151-156, as amended, and Article XIV, Section 16(A)(9) and (B) of the Louisiana Constitution of 1974, as same may be continued and promulgated in proper statutory form and, further, amended from time to time, advertises the lands not under mineral lease on December 9, 2015, excluding the beds and bottoms of all navigable water bodies located within the following: All or a portion of Section 16, Township 21 South, Range 13 East in Terrebonne Parish, Louisiana, containing approximately **640.76 acres**, all as more particularly outlined on a plat on file in the Office of Mineral Resources, Department of Natural Resources. All bearings, distances and coordinates are based on Louisiana Coordinate System of 1927, (North or South Zone).

NOTE: The above description of the Tract nominated for the purpose of acquiring a mineral lease or a geophysical agreement has been provided and corrected, where required, exclusively by the nominating party. Any mineral lease or geophysical agreement selected from this Tract and awarded by the Louisiana State Mineral and Energy Board shall be without warranty of any kind, either express, implied or statutory including, but not limited to, title or the implied warranties of merchantability and fitness for a particular purpose.

An error or omission in the nominating party's Tract description may require that a State mineral lease or geophysical agreement be modified, canceled or abrogated due to the existence of conflicting leases, operating agreements, private claims or other future obligations or conditions within the Tract described. In such case, however, the Louisiana State Mineral and Energy Board shall not be obligated to refund any consideration paid by the Lessee prior to such modification, cancellation or abrogation including, but not limited to, bonuses, rentals and royalties.

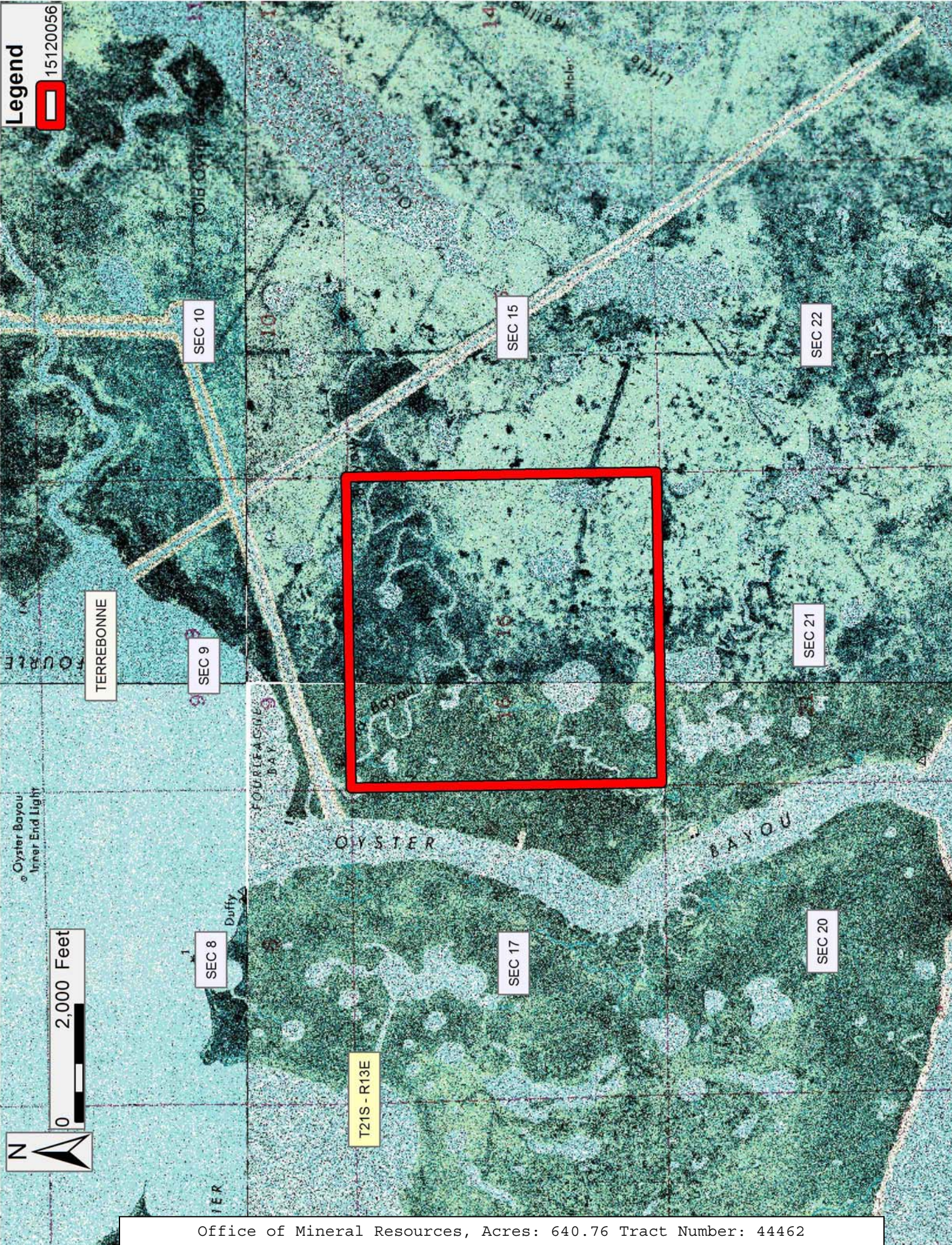
NOTE: The failure of the Lessee to submit to the Lessor, at the office of the Terrebonne Parish School Board, for approval, the document intended to transfer, sublease or assign any right or obligation of the Lessee under this lease, within sixty (60) days after the effective date of any such transfer, sublease or assignment, shall subject the Lessee to pay to the Lessor any damages the Lessor may suffer, but in no event shall such damages be deemed to be less than One Hundred (\$100.00) Dollars per day for each day the Lessee fails to submit any such document to the Lessor for approval.

NOTE: The Terrebonne Parish School Board will require a minimum bonus of \$300 per acre and a minimum royalty of 25%.

NOTE: The State of Louisiana does hereby reserve, and this lease shall be subject to, the imprescriptible right of surface use in the nature of a servitude in favor of the Department of Natural Resources, including its Offices and Commissions, for the sole purpose of implementing, constructing, servicing and maintaining approved coastal zone management and/or restoration projects. Utilization of any and all rights derived under this lease by the mineral lessee, its agents, successors or assigns, shall not interfere with nor hinder the reasonable surface use by the Department of Natural Resources, its Offices or Commissions, as herein above reserved.

Applicant: ACADIAN LAND SERVICES, L.L.C. to Agency and by Resolution from the Terrebonne Parish School Board authorizing the Mineral Board to act in its behalf

Bidder	Cash Payment	Price/Acre	Rental	Oil	Gas	Other



Legend
15120056

0 2,000 Feet
N

TERREBONNE

SEC 10

SEC 9

SEC 8

FOURFATHOM BAY

OYSTER BAYOU

T21S - R13E

SEC 15

SEC 17

SEC 21

SEC 20

SEC 22

TRACT 44463 - Terrebonne Parish School Board - Terrebonne Parish, Louisiana

The State Mineral and Energy Board acting on behalf of the Terrebonne Parish School Board, pursuant to Resolution(s) adopted by that (those) body(ies) and in accordance with Louisiana Revised Statutes 30:121-136 and 151-156, as amended, and Article XIV, Section 16(A)(9) and (B) of the Louisiana Constitution of 1974, as same may be continued and promulgated in proper statutory form and, further, amended from time to time, advertises the lands not under mineral lease on December 9, 2015, excluding the beds and bottoms of all navigable water bodies located within the following: All or a portion of Section 16, Township 21 South, Range 12 East in Terrebonne Parish, Louisiana, containing approximately **575.00 acres**, all as more particularly outlined on a plat on file in the Office of Mineral Resources, Department of Natural Resources. All bearings, distances and coordinates are based on Louisiana Coordinate System of 1927, (North or South Zone).

NOTE: The above description of the Tract nominated for the purpose of acquiring a mineral lease or a geophysical agreement has been provided and corrected, where required, exclusively by the nominating party. Any mineral lease or geophysical agreement selected from this Tract and awarded by the Louisiana State Mineral and Energy Board shall be without warranty of any kind, either express, implied or statutory including, but not limited to, title or the implied warranties of merchantability and fitness for a particular purpose.

An error or omission in the nominating party's Tract description may require that a State mineral lease or geophysical agreement be modified, canceled or abrogated due to the existence of conflicting leases, operating agreements, private claims or other future obligations or conditions within the Tract described. In such case, however, the Louisiana State Mineral and Energy Board shall not be obligated to refund any consideration paid by the Lessee prior to such modification, cancellation or abrogation including, but not limited to, bonuses, rentals and royalties.

NOTE: The failure of the Lessee to submit to the Lessor, at the office of the Terrebonne Parish School Board, for approval, the document intended to transfer, sublease or assign any right or obligation of the Lessee under this lease, within sixty (60) days after the effective date of any such transfer, sublease or assignment, shall subject the Lessee to pay to the Lessor any damages the Lessor may suffer, but in no event shall such damages be deemed to be less than One Hundred (\$100.00) Dollars per day for each day the Lessee fails to submit any such document to the Lessor for approval.

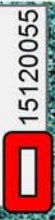
NOTE: The Terrebonne Parish School Board will require a minimum bonus of \$300 per acre and a minimum royalty of 25%.

NOTE: The State of Louisiana does hereby reserve, and this lease shall be subject to, the imprescriptible right of surface use in the nature of a servitude in favor of the Department of Natural Resources, including its Offices and Commissions, for the sole purpose of implementing, constructing, servicing and maintaining approved coastal zone management and/or restoration projects. Utilization of any and all rights derived under this lease by the mineral lessee, its agents, successors or assigns, shall not interfere with nor hinder the reasonable surface use by the Department of Natural Resources, its Offices or Commissions, as herein above reserved.

Applicant: ACADIAN LAND SERVICES, L.L.C. to Agency and by Resolution from the Terrebonne Parish School Board authorizing the Mineral Board to act in its behalf

Bidder	Cash Payment	Price/Acre	Rental	Oil	Gas	Other

Legend



15120055



0 2,000 Feet

SEC 8

SEC 9

SEC 10

SEC 17

SEC 15

SEC 20

SEC 21

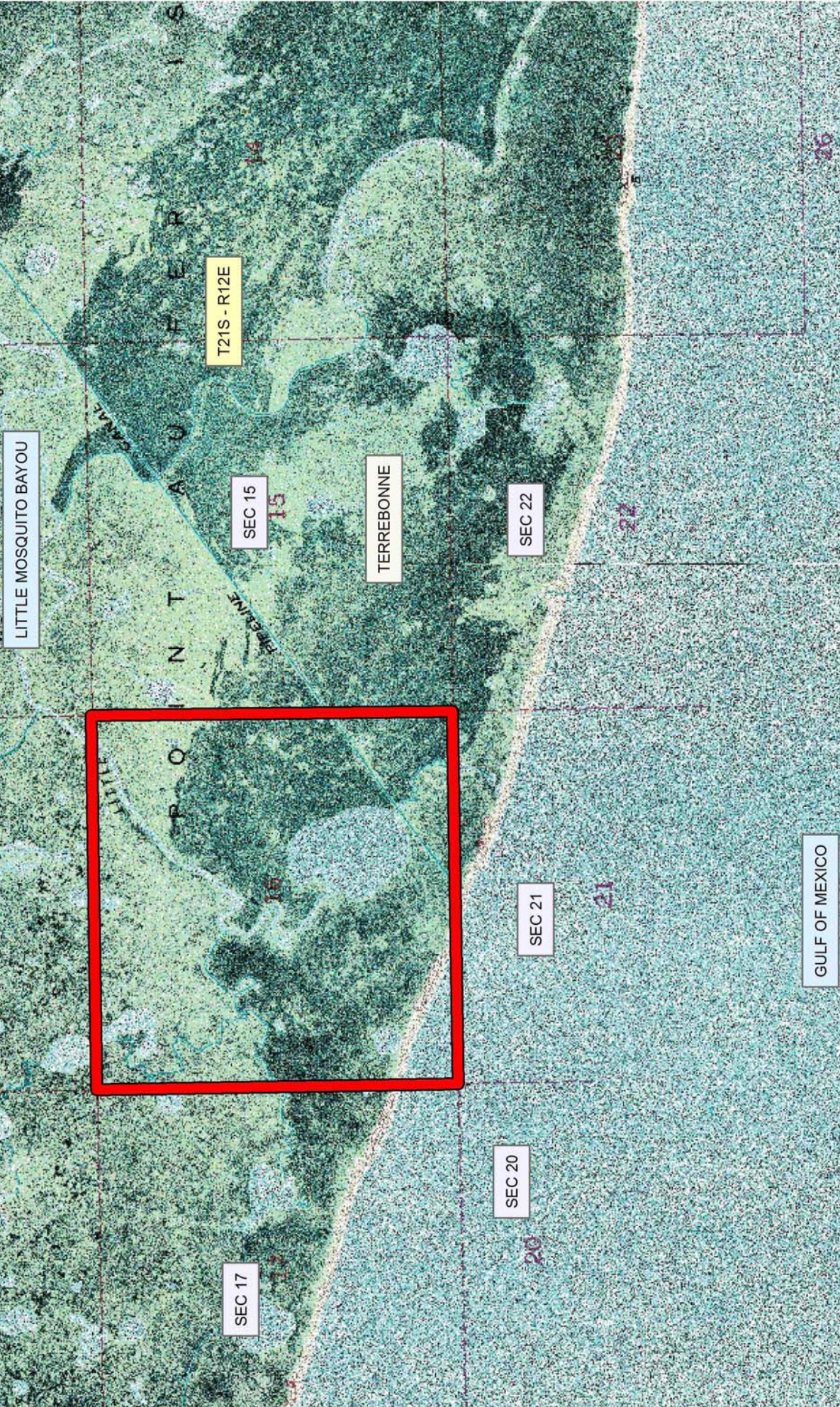
SEC 22

LITTLE MOSQUITO BAYOU

TERREBONNE

GULF OF MEXICO

T21S - R12E



TRACT 44464 - Terrebonne Parish School Board - Terrebonne Parish, Louisiana

The State Mineral and Energy Board acting on behalf of the Terrebonne Parish School Board, pursuant to Resolution(s) adopted by that (those) body(ies) and in accordance with Louisiana Revised Statutes 30:121-136 and 151-156, as amended, and Article XIV, Section 16(A)(9) and (B) of the Louisiana Constitution of 1974, as same may be continued and promulgated in proper statutory form and, further, amended from time to time, advertises the lands not under mineral lease on December 9, 2015, excluding the beds and bottoms of all navigable water bodies located within the following: All or a portion of Section 16, Township 22 South, Range 15 East in Terrebonne Parish, Louisiana, containing approximately **315.13 acres**, all as more particularly outlined on a plat on file in the Office of Mineral Resources, Department of Natural Resources. All bearings, distances and coordinates are based on Louisiana Coordinate System of 1927, (North or South Zone).

NOTE: The above description of the Tract nominated for the purpose of acquiring a mineral lease or a geophysical agreement has been provided and corrected, where required, exclusively by the nominating party. Any mineral lease or geophysical agreement selected from this Tract and awarded by the Louisiana State Mineral and Energy Board shall be without warranty of any kind, either express, implied or statutory including, but not limited to, title or the implied warranties of merchantability and fitness for a particular purpose.

An error or omission in the nominating party's Tract description may require that a State mineral lease or geophysical agreement be modified, canceled or abrogated due to the existence of conflicting leases, operating agreements, private claims or other future obligations or conditions within the Tract described. In such case, however, the Louisiana State Mineral and Energy Board shall not be obligated to refund any consideration paid by the Lessee prior to such modification, cancellation or abrogation including, but not limited to, bonuses, rentals and royalties.

NOTE: The failure of the Lessee to submit to the Lessor, at the office of the Terrebonne Parish School Board, for approval, the document intended to transfer, sublease or assign any right or obligation of the Lessee under this lease, within sixty (60) days after the effective date of any such transfer, sublease or assignment, shall subject the Lessee to pay to the Lessor any damages the Lessor may suffer, but in no event shall such damages be deemed to be less than One Hundred (\$100.00) Dollars per day for each day the Lessee fails to submit any such document to the Lessor for approval.

NOTE: The Terrebonne Parish School Board will require a minimum bonus of \$300 per acre and a minimum royalty of 25%.

NOTE: The State of Louisiana does hereby reserve, and this lease shall be subject to, the imprescriptible right of surface use in the nature of a servitude in favor of the Department of Natural Resources, including its Offices and Commissions, for the sole purpose of implementing, constructing, servicing and maintaining approved coastal zone management and/or restoration projects. Utilization of any and all rights derived under this lease by the mineral lessee, its agents, successors or assigns, shall not interfere with nor hinder the reasonable surface use by the Department of Natural Resources, its Offices or Commissions, as herein above reserved.

Applicant: ACADIAN LAND SERVICES, L.L.C. to Agency and by Resolution from the Terrebonne Parish School Board authorizing the Mineral Board to act in its behalf

Bidder	Cash Payment	Price/Acre	Rental	Oil	Gas	Other

Legend

15120058

Blocks

