

TRACT 44107 - Terrebonne Parish, Louisiana

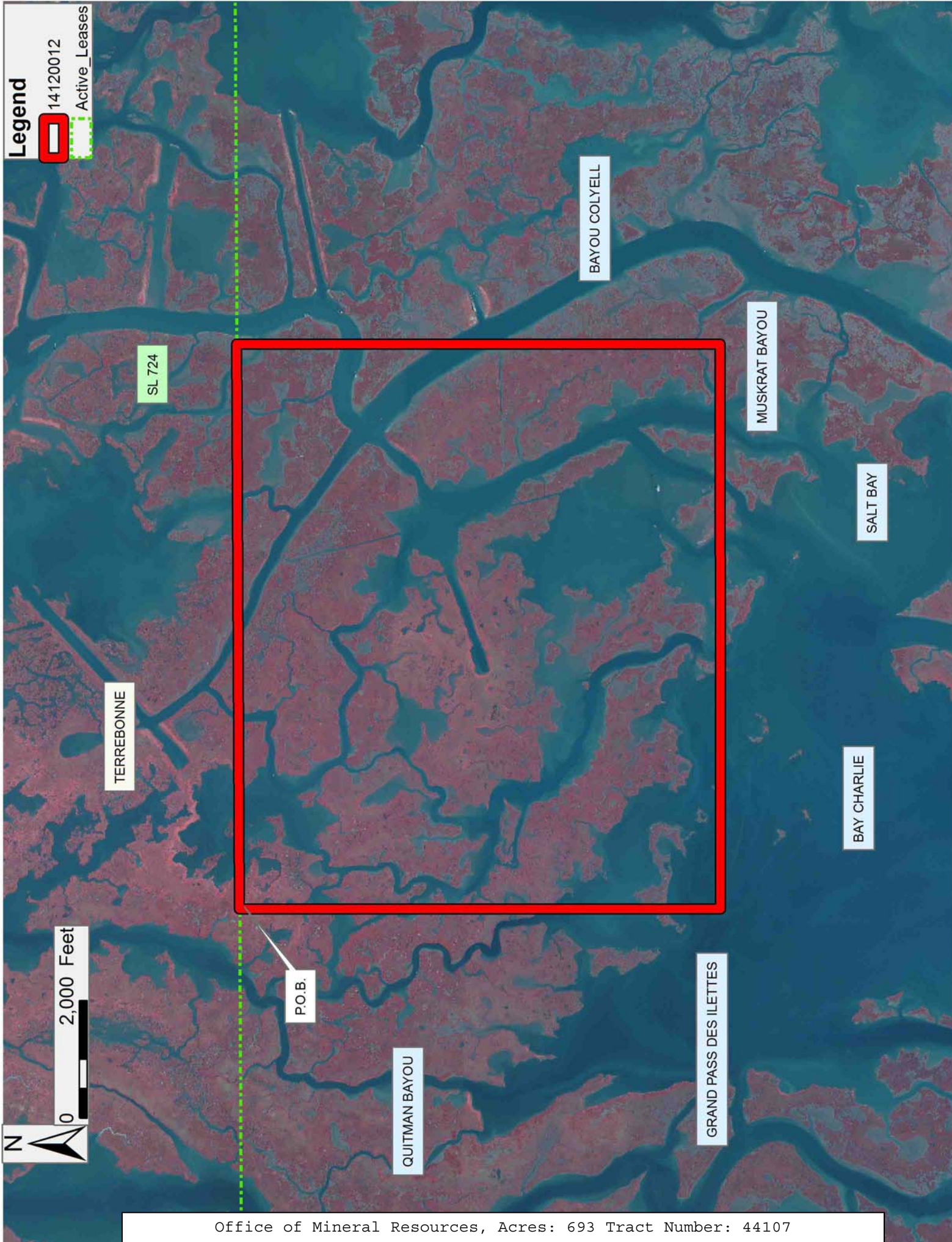
All of the lands now or formerly constituting the beds and bottoms of all water bodies of every nature and description as to which title is vested in the State of Louisiana, together with all islands arising therein and other lands formed by accretion or by reliction, where allowed by law, excepting tax adjudicated lands, and not presently under mineral lease on December 10, 2014, situated in Terrebonne Parish, Louisiana, and more particularly described as follows: Beginning at a point on the Southern boundary of State Lease No. 724, as amended having Coordinates of X = 2,170,934.96 and Y = 193,742.40; thence North 89 degrees 43 minutes 25 seconds East 9,635.74 feet along the Southern boundary of said State Lease No. 724 to a point having Coordinates of X = 2,180,570.58 and Y = 193,788.88; thence South 8,247.16 feet to a point having Coordinates of X = 2,180,570.58 and Y = 185,541.73; thence West 9,635.62 feet to a point having Coordinates of X = 2,170,934.96 and Y = 185,541.73; thence North 8,200.67 feet to the point of beginning, containing approximately **693 acres**, all as more particularly outlined on a plat on file in the Office of Mineral Resources, Department of Natural Resources. All bearings, distances and coordinates are based on Louisiana Coordinate System of 1927, (North or South Zone), where applicable.

NOTE: The above description of the Tract nominated for lease has been provided and corrected, where required, exclusively by the nomination party. Any mineral lease selected from this Tract and awarded by the Louisiana State Mineral and Energy Board shall be without warranty of any kind, either express, implied, or statutory, including, but not limited to, the implied warranties of merchantability and fitness for a particular purpose. Should the mineral lease awarded by the Louisiana State Mineral and Energy Board be subsequently modified, cancelled or abrogated due to the existence of conflicting leases, operating agreements, private claims or other future obligations or conditions which may affect all or any portion of the leased Tract, it shall not relieve the Lessee of the obligation to pay any bonus due thereon to the Louisiana State Mineral and Energy Board, nor shall the Louisiana State Mineral and Energy Board be obligated to refund any consideration paid by the Lessor prior to such modification, cancellation, or abrogation, including, but not limited to, bonuses, rentals and royalties.

NOTE: The State of Louisiana does hereby reserve, and this lease shall be subject to, the imprescriptible right of surface use in the nature of a servitude in favor of the Department of Natural Resources, including its Offices and Commissions, for the sole purpose of implementing, constructing, servicing and maintaining approved coastal zone management and/or restoration projects. Utilization of any and all rights derived under this lease by the mineral lessee, its agents, successors or assigns, shall not interfere with nor hinder the reasonable surface use by the Department of Natural Resources, its Offices or Commissions, as herein above reserved.

Applicant: CYPRESS ENERGY CORPORATION

| Bidder | Cash Payment | Price/ Acre | Rental | Oil | Gas | Other |
|--------|-----------------|----------------|--------|-----|-----|-------|
| | | | | | | |
| | | | | | | |
| | | | | | | |
| | | | | | | |



TRACT 44108 - Terrebonne Parish, Louisiana

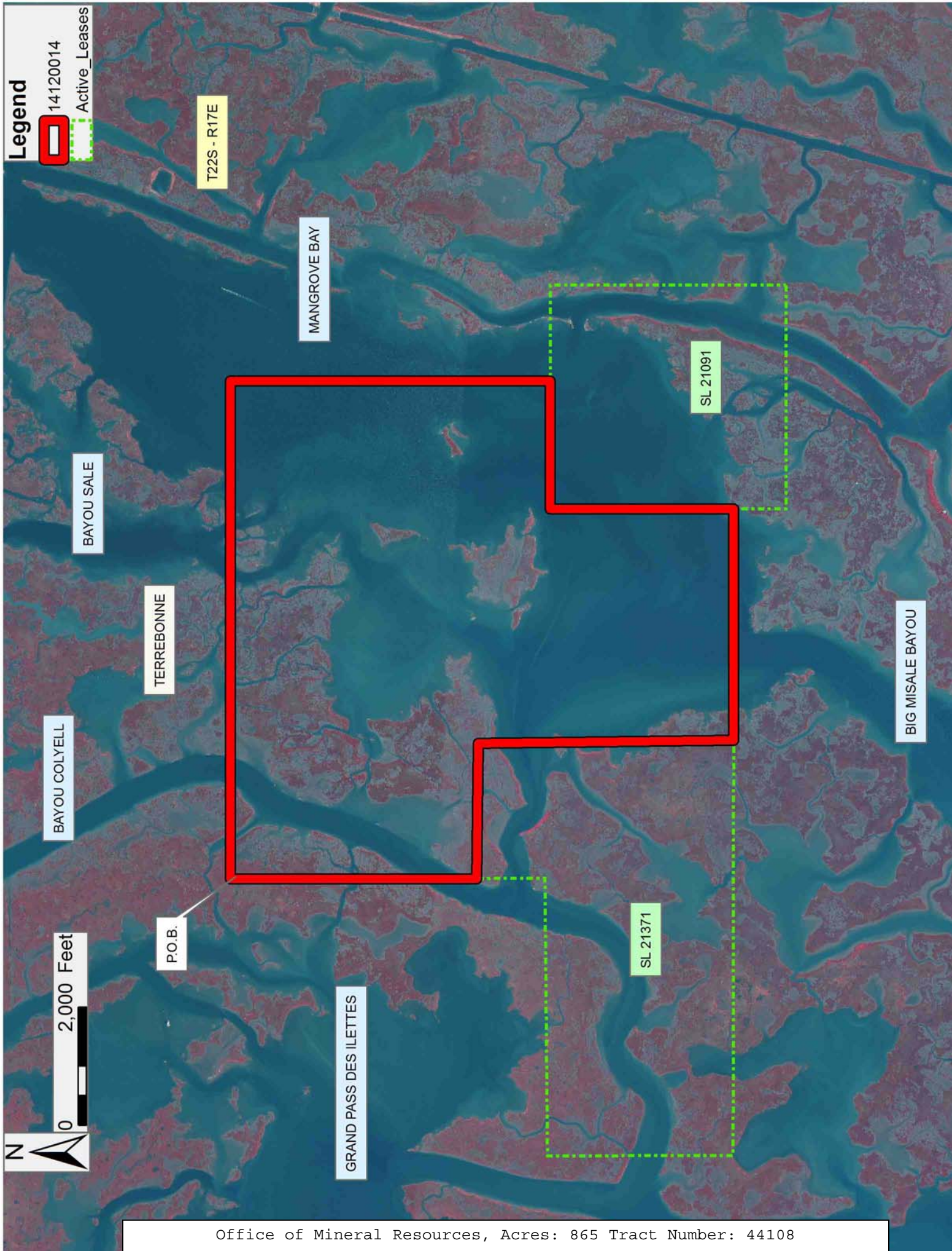
All of the lands now or formerly constituting the beds and bottoms of all water bodies of every nature and description as to which title is vested in the State of Louisiana, together with all islands arising therein and other lands formed by accretion or by reliction, where allowed by law, excepting tax adjudicated lands, and not presently under mineral lease on December 10, 2014, situated in Terrebonne Parish, Louisiana, and more particularly described as follows: Beginning at a point having Coordinates of X = 2,180,570.58 and Y = 185,541.73; thence East 8,452.67 feet to a point having Coordinates of X = 2,189,023.25 and Y = 185,541.73; thence South 5,422.45 feet to a point on the north boundary of State Lease No. 21091 having Coordinates of X = 2,189,023.25 and Y = 180,119.27; thence along the boundaries of said State Lease No. 21091 the following courses: West 2,176.79 feet to a point having Coordinates of X = 2,186,846.46 and Y = 180,119.27 and South 3,112.73 feet to a point having Coordinates of X = 2,186,846.46 and Y = 177,006.54; thence West 3,921.31 feet to the Southeast corner of State Lease No. 21371 having Coordinates of X = 2,182,925.15 and Y = 177,006.54; thence along the boundaries of said State Lease No. 21371 the following courses: North 00 degrees 47 minutes 27 seconds West 4,333.46 feet to a point having Coordinates of X = 2,182,865.34 and Y = 181,339.59 and North 89 degrees 22 minutes 08 seconds West 2,294.90 feet to a point on its north boundary having Coordinates of X = 2,180,570.58 and Y = 181,364.87; thence North 4,176.86 feet to the point of beginning, **LESS AND EXCEPT** any right, title, and interest in lands owned by and not under lease from the State of Louisiana, on behalf of the Terrebonne Parish School Board, situated in Section 16, Township 22 South, Range 17 East, Terrebonne Parish, Louisiana, contained within the above described tract containing approximately **865 acres**, all as more particularly outlined on a plat on file in the Office of Mineral Resources, Department of Natural Resources. All bearings, distances and coordinates are based on Louisiana Coordinate System of 1927, (North or South Zone), where applicable.

NOTE: The above description of the Tract nominated for lease has been provided and corrected, where required, exclusively by the nomination party. Any mineral lease selected from this Tract and awarded by the Louisiana State Mineral and Energy Board shall be without warranty of any kind, either express, implied, or statutory, including, but not limited to, the implied warranties of merchantability and fitness for a particular purpose. Should the mineral lease awarded by the Louisiana State Mineral and Energy Board be subsequently modified, cancelled or abrogated due to the existence of conflicting leases, operating agreements, private claims or other future obligations or conditions which may affect all or any portion of the leased Tract, it shall not relieve the Lessee of the obligation to pay any bonus due thereon to the Louisiana State Mineral and Energy Board, nor shall the Louisiana State Mineral and Energy Board be obligated to refund any consideration paid by the Lessor prior to such modification, cancellation, or abrogation, including, but not limited to, bonuses, rentals and royalties.

NOTE: The State of Louisiana does hereby reserve, and this lease shall be subject to, the imprescriptible right of surface use in the nature of a servitude in favor of the Department of Natural Resources, including its Offices and Commissions, for the sole purpose of implementing, constructing, servicing and maintaining approved coastal zone management and/or restoration projects. Utilization of any and all rights derived under this lease by the mineral lessee, its agents, successors or assigns, shall not interfere with nor hinder the reasonable surface use by the Department of Natural Resources, its Offices or Commissions, as herein above reserved.

Applicant: CYPRESS ENERGY CORPORATION

| Bidder | Cash Payment | Price/ Acre | Rental | Oil | Gas | Other |
|--------|-----------------|----------------|--------|-----|-----|-------|
| | | | | | | |
| | | | | | | |
| | | | | | | |
| | | | | | | |



0 2,000 Feet

Legend



14120014



Active_Leases

BAYOU SALE

TERREBONNE

BAYOU COLYELL

P.O.B.

GRAND PASS DES ILETES

MANGROVE BAY

T22S - R17E

SL 21091

SL 21371

BIG MISALE BAYOU

TRACT 44109 - Terrebonne Parish, Louisiana

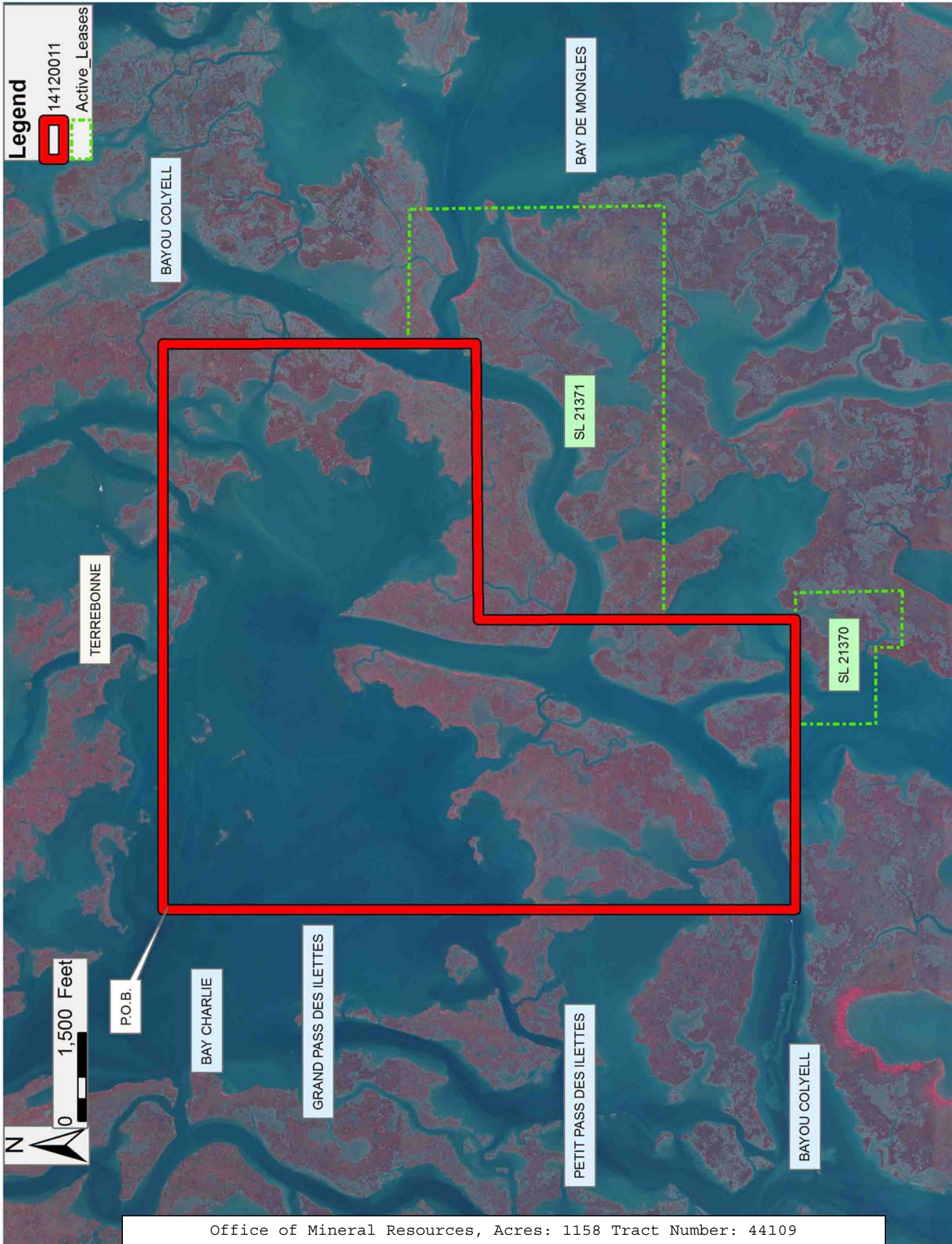
All of the lands now or formerly constituting the beds and bottoms of all water bodies of every nature and description as to which title is vested in the State of Louisiana, together with all islands arising therein and other lands formed by accretion or by reliction, where allowed by law, excepting tax adjudicated lands, and not presently under mineral lease on December 10, 2014, situated in Terrebonne Parish, Louisiana, and more particularly described as follows: Beginning at a point having Coordinates of X = 2,170,934.96 and Y = 185,541.73; thence East 9,635.62 feet to a point having Coordinates of X = 2,180,570.58 and Y = 185,541.73; thence South 4,176.86 feet to a point on the north boundary of State Lease No. 21371 having Coordinates of X = 2,180,570.58 and Y = 181,364.87; thence along the boundaries of said State Lease No. 21371 the following courses: South 00 degrees 23 minutes 49 seconds East 1,156.04 feet to a point having Coordinates of X = 2,180,578.59 and Y = 180,208.86, South 89 degrees 28 minutes 57 seconds West 4,709.94 feet to a point having Coordinates of X = 2,175,868.84 and Y = 180,166.31 and South 00 degrees 09 minutes 25 seconds East 3,151.15 feet to its Southwest corner having Coordinates of X = 2,175,877.47 and Y = 177,015.17; thence South 2,252.22 feet to a point on the north boundary of State Lease No. 21370 having Coordinates of X = 2,175,877.47 and Y = 174,762.95; thence West 1,789.20 feet along the north boundary of said State Lease No. 21370 to its Northwest corner having Coordinates of X = 2,174,088.27 and Y = 174,762.95; thence continue West 3,153.31 feet to a point having Coordinates of X = 2,170,934.96 and Y = 174,762.95; thence North 10,778.78 feet to the point of beginning, containing approximately **1,158 acres**, all as more particularly outlined on a plat on file in the Office of Mineral Resources, Department of Natural Resources. All bearings, distances and coordinates are based on Louisiana Coordinate System of 1927, (North or South Zone), where applicable.

NOTE: The above description of the Tract nominated for lease has been provided and corrected, where required, exclusively by the nomination party. Any mineral lease selected from this Tract and awarded by the Louisiana State Mineral and Energy Board shall be without warranty of any kind, either express, implied, or statutory, including, but not limited to, the implied warranties of merchantability and fitness for a particular purpose. Should the mineral lease awarded by the Louisiana State Mineral and Energy Board be subsequently modified, cancelled or abrogated due to the existence of conflicting leases, operating agreements, private claims or other future obligations or conditions which may affect all or any portion of the leased Tract, it shall not relieve the Lessee of the obligation to pay any bonus due thereon to the Louisiana State Mineral and Energy Board, nor shall the Louisiana State Mineral and Energy Board be obligated to refund any consideration paid by the Lessor prior to such modification, cancellation, or abrogation, including, but not limited to, bonuses, rentals and royalties.

NOTE: The State of Louisiana does hereby reserve, and this lease shall be subject to, the imprescriptible right of surface use in the nature of a servitude in favor of the Department of Natural Resources, including its Offices and Commissions, for the sole purpose of implementing, constructing, servicing and maintaining approved coastal zone management and/or restoration projects. Utilization of any and all rights derived under this lease by the mineral lessee, its agents, successors or assigns, shall not interfere with nor hinder the reasonable surface use by the Department of Natural Resources, its Offices or Commissions, as herein above reserved.

Applicant: CYPRESS ENERGY CORPORATION

| Bidder | Cash Payment | Price/ Acre | Rental | Oil | Gas | Other |
|--------|-----------------|----------------|--------|-----|-----|-------|
| | | | | | | |
| | | | | | | |
| | | | | | | |
| | | | | | | |



TRACT 44110 - Terrebonne Parish, Louisiana

All of the lands now or formerly constituting the beds and bottoms of all water bodies of every nature and description as to which title is vested in the State of Louisiana, together with all islands arising therein and other lands formed by accretion or by reliction, where allowed by law, excepting tax adjudicated lands, and not presently under mineral lease on December 10, 2014, situated in Terrebonne Parish, Louisiana, and more particularly described as follows: Beginning at the Southwest corner of State Lease No. 21371 having Coordinates of X = 2,175,877.47 and Y = 177,015.17; thence East 7,047.69 feet along the south boundary of said State Lease No. 21371 to its Southeast corner having Coordinates of X = 2,182,925.15 and Y = 177,006.54; thence continue East 3,921.31 feet to a point on the west boundary of State Lease No. 21091 having Coordinates of X = 2,186,846.46 and Y = 177,006.54; thence South 887.27 feet along the west boundary of said State Lease No. 21091 to its Southwest corner having Coordinates of X = 2,186,846.46 and Y = 176,119.27; thence continue South 442.28 feet to a point on the north boundary of State Lease No. 21092 having Coordinates of X = 2,186,846.46 and Y = 175,676.99; thence along the boundaries of said State Lease No. 21092 the following courses: West 1,724.23 feet to a point having Coordinates of X = 2,185,122.23 and Y = 175,676.99 and South 4,157.85 feet to a point having Coordinates of X = 2,185,122.23 and Y = 171,519.14; thence continue South 819.14 feet to a point having Coordinates of X = 2,185,122.23 and Y = 170,700.00; thence West 9,722.23 feet to the Southeast corner of State Lease No. 21090 having Coordinates of X = 2,175,400.00 and Y = 170,700.00; thence North 2,255.24 feet along the east boundary of said State Lease No. 21090 to a point of intersection with the south boundary of State Lease No. 21370 having Coordinates of X = 2,175,400.00 and Y = 172,955.24; thence along the boundaries of said State Lease No. 21370 the following courses: South 89 degrees 33 minutes 42 seconds East 965.80 feet to a point having Coordinates of X = 2,176,365.77 and Y = 172,947.85, North 01 degrees 05 minutes 23 seconds West 1,815.43 feet to a point having Coordinates of X = 2,176,331.24 and Y = 174,762.95 and West 453.77 feet to a point on its north boundary having Coordinates of X = 2,175,877.47 and Y = 174,762.95; thence North 2,252.22 feet to the point of beginning, containing approximately **664 acres**, all as more particularly outlined on a plat on file in the Office of Mineral Resources, Department of Natural Resources. All bearings, distances and coordinates are based on Louisiana Coordinate System of 1927, (North or South Zone), where applicable.

NOTE: The above description of the Tract nominated for lease has been provided and corrected, where required, exclusively by the nomination party. Any mineral lease selected from this Tract and awarded by the Louisiana State Mineral and Energy Board shall be without warranty of any kind, either express, implied, or statutory, including, but not limited to, the implied warranties of merchantability and fitness for a particular purpose. Should the mineral lease awarded by the Louisiana State Mineral and Energy Board be subsequently modified, cancelled or abrogated due to the existence of conflicting leases, operating agreements, private claims

or other future obligations or conditions which may affect all or any portion of the leased Tract, it shall not relieve the Lessee of the obligation to pay any bonus due thereon to the Louisiana State Mineral and Energy Board, nor shall the Louisiana State Mineral and Energy Board be obligated to refund any consideration paid by the Lessor prior to such modification, cancellation, or abrogation, including, but not limited to, bonuses, rentals and royalties.

NOTE: The State of Louisiana does hereby reserve, and this lease shall be subject to, the imprescriptible right of surface use in the nature of a servitude in favor of the Department of Natural Resources, including its Offices and Commissions, for the sole purpose of implementing, constructing, servicing and maintaining approved coastal zone management and/or restoration projects. Utilization of any and all rights derived under this lease by the mineral lessee, its agents, successors or assigns, shall not interfere with nor hinder the reasonable surface use by the Department of Natural Resources, its Offices or Commissions, as herein above reserved.

Applicant: CYPRESS ENERGY CORPORATION

| Bidder | Cash Payment | Price/ Acre | Rental | Oil | Gas | Other |
|--------|-----------------|----------------|--------|-----|-----|-------|
| | | | | | | |
| | | | | | | |
| | | | | | | |
| | | | | | | |

