

TRACT 44097 - Caddo Parish, Louisiana

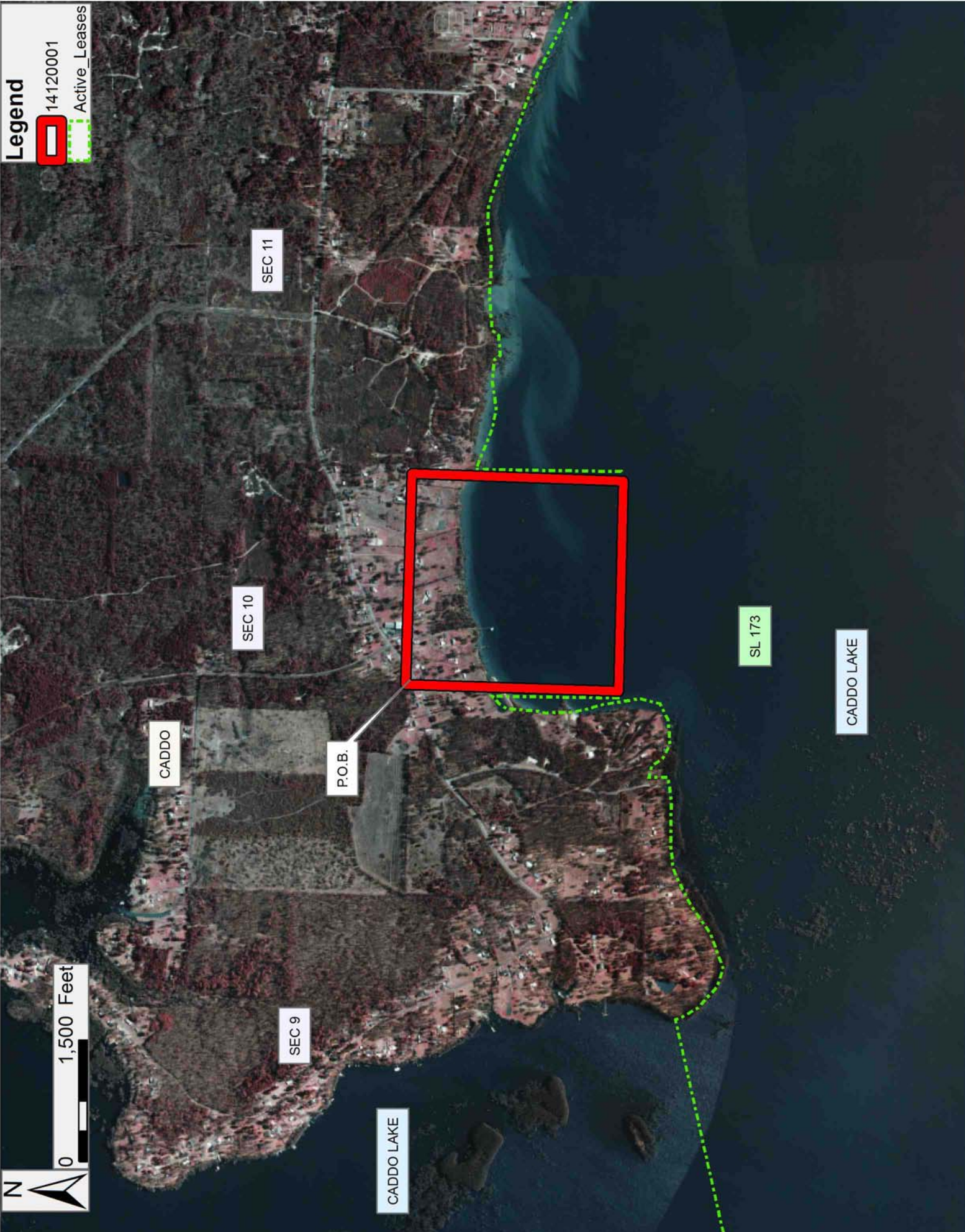
All of the lands now or formerly constituting the beds and bottoms of all water bodies of every nature and description as to which title is vested in the State of Louisiana, together with all islands arising therein and other lands formed by accretion or by reliction, where allowed by law, excepting tax adjudicated lands, and not presently under mineral lease on December 10, 2014, situated in Caddo Parish, Louisiana, and more particularly described as follows: Beginning at a point having Coordinates of X = 1,536,029.99 and Y = 756,962.31; thence East 2,606.85 feet to a point having Coordinates of X = 1,538,636.23 and Y= 756,905.79; thence Southerly approximately 2610.46 feet to a Northwest corner of State Lease No. 173, as amended; thence along the Northern boundary of said State Lease No. 173 West approximately 2,600.26 feet; thence North 2632.02 feet to the point of beginning, **LESS AND EXCEPT** any portion of State Lease No. 173, as amended, that may lie within the above described tract, containing approximately **133 acres**, all as more particularly outlined on a plat on file in the Office of Mineral Resources, Department of Natural Resources. All bearings, distances and coordinates are based on Louisiana Coordinate System of 1927, (North or South Zone), where applicable.

NOTE: The above description of the Tract nominated for lease has been provided and corrected, where required, exclusively by the nomination party. Any mineral lease selected from this Tract and awarded by the Louisiana State Mineral and Energy Board shall be without warranty of any kind, either express, implied, or statutory, including, but not limited to, the implied warranties of merchantability and fitness for a particular purpose. Should the mineral lease awarded by the Louisiana State Mineral and Energy Board be subsequently modified, cancelled or abrogated due to the existence of conflicting leases, operating agreements, private claims or other future obligations or conditions which may affect all or any portion of the leased Tract, it shall not relieve the Lessee of the obligation to pay any bonus due thereon to the Louisiana State Mineral and Energy Board, nor shall the Louisiana State Mineral and Energy Board be obligated to refund any consideration paid by the Lessor prior to such modification, cancellation, or abrogation, including, but not limited to, bonuses, rentals and royalties.

Applicant: GEMINI EXPLORATIONS, INC.

Bidder	Cash Payment	Price/Acre	Rental	Oil	Gas	Other

Legend
14120001
Active_Leases



TRACT 44098 - Concordia Parish, Louisiana

All of the lands now or formerly constituting the beds and bottoms of all water bodies of every nature and description as to which title is vested in the State of Louisiana, together with all islands arising therein and other lands formed by accretion or by reliction, where allowed by law, excepting tax adjudicated lands, and not presently under mineral lease on December 10, 2014, situated in Concordia Parish, Louisiana, and more particularly described as follows: Beginning at a point having Coordinates of X = 2,288,970.37 and Y = 250,358.93; thence North 58 degrees 46 minutes 20 seconds East 6,287.07 feet to a point having Coordinates of X = 2,294,346.52 and Y = 253,618.41; thence South 43 degrees 10 minutes 59 seconds East approximately 17,753.73 feet to the Northeast corner of State Lease No.21005; thence South 78 degrees 20 minutes 24 seconds West approximately 2,464.79 feet along the northern boundary of said State Lease No. 21005 to its Northwest corner; thence North 56 degrees 01 minutes 22 seconds West 18,223.05 feet to the point of beginning, **LESS AND EXCEPT** any portion of the above described tract that falls within the State of Mississippi, containing approximately **595 acres**, all as more particularly outlined on a plat on file in the Office of Mineral Resources, Department of Natural Resources. All bearings, distances and coordinates are based on Louisiana Coordinate System of 1927, (North or South Zone), where applicable.

NOTE: The above description of the Tract nominated for lease has been provided and corrected, where required, exclusively by the nomination party. Any mineral lease selected from this Tract and awarded by the Louisiana State Mineral and Energy Board shall be without warranty of any kind, either express, implied, or statutory, including, but not limited to, the implied warranties of merchantability and fitness for a particular purpose. Should the mineral lease awarded by the Louisiana State Mineral and Energy Board be subsequently modified, cancelled or abrogated due to the existence of conflicting leases, operating agreements, private claims or other future obligations or conditions which may affect all or any portion of the leased Tract, it shall not relieve the Lessee of the obligation to pay any bonus due thereon to the Louisiana State Mineral and Energy Board, nor shall the Louisiana State Mineral and Energy Board be obligated to refund any consideration paid by the Lessor prior to such modification, cancellation, or abrogation, including, but not limited to, bonuses, rentals and royalties.

Applicant: BARKER ENERGY

Bidder	Cash Payment	Price/Acre	Rental	Oil	Gas	Other

Legend

14120002

Active_Leases



TRACT 44099 - Jefferson and Plaquemines Parishes, Louisiana

All of the lands now or formerly constituting the beds and bottoms of all water bodies of every nature and description as to which title is vested in the State of Louisiana, together with all islands arising therein and other lands formed by accretion or by reliction, where allowed by law, excepting tax adjudicated lands, and not presently under mineral lease on December 10, 2014, situated in Jefferson and Plaquemines Parishes, Louisiana, and more particularly described as follows: Beginning at a point having Coordinates of X = 2,428,485.30 and Y = 286,022.31; thence North 3,865.07 feet to a point having Coordinates of X = 2,428,485.30 and Y = 289,887.38; thence East approximately 1,440.04 feet to a point on the Southern boundary of State Lease No. 15858; thence East 7,209.96 feet to a point having Coordinates of X = 2,437,135.30 and Y = 289,887.38; thence South 10,515.07 feet to a point having Coordinates of X = 2,437,135.30 and Y = 279,372.31; thence West 4,150.00 feet to a point having Coordinates of X = 2,432,985.30 and Y = 279,372.31; thence North 6,650.00 feet to a point having Coordinates of X = 2,432,985.30 and Y = 286,022.31; thence West 4,500.00 feet to the point of beginning, containing approximately **1,397 acres**, all as more particularly outlined on a plat on file in the Office of Mineral Resources, Department of Natural Resources. All bearings, distances and coordinates are based on Louisiana Coordinate System of 1927, (North or South Zone), where applicable.

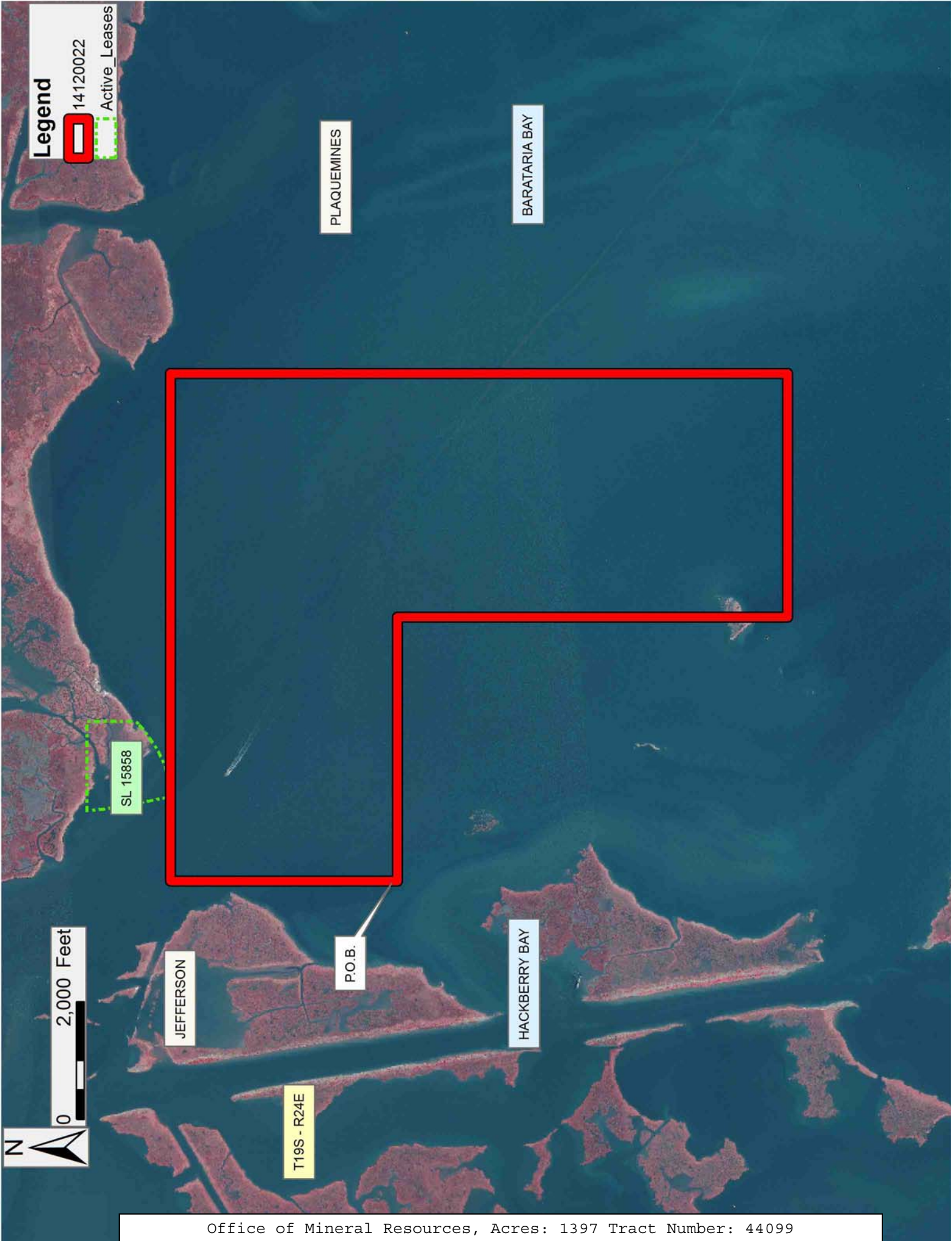
NOTE: The above description of the Tract nominated for lease has been provided and corrected, where required, exclusively by the nomination party. Any mineral lease selected from this Tract and awarded by the Louisiana State Mineral and Energy Board shall be without warranty of any kind, either express, implied, or statutory, including, but not limited to, the implied warranties of merchantability and fitness for a particular purpose. Should the mineral lease awarded by the Louisiana State Mineral and Energy Board be subsequently modified, cancelled or abrogated due to the existence of conflicting leases, operating agreements, private claims or other future obligations or conditions which may affect all or any portion of the leased Tract, it shall not relieve the Lessee of the obligation to pay any bonus due thereon to the Louisiana State Mineral and Energy Board, nor shall the Louisiana State Mineral and Energy Board be obligated to refund any consideration paid by the Lessor prior to such modification, cancellation, or abrogation, including, but not limited to, bonuses, rentals and royalties.

NOTE: The State of Louisiana does hereby reserve, and this lease shall be subject to, the imprescriptible right of surface use in the nature of a servitude in favor of the Department of Natural Resources, including its Offices and Commissions, for the sole purpose of implementing, constructing, servicing and maintaining approved coastal zone management and/or restoration projects. Utilization of any and all rights derived under this lease by the mineral lessee, its agents, successors or assigns, shall not interfere with nor hinder the reasonable surface use by the

Department of Natural Resources, its Offices or Commissions, as herein above reserved.

Applicant: OIL LAND SERVICES, INC.

Bidder	Cash Payment	Price/Acre	Rental	Oil	Gas	Other



Legend



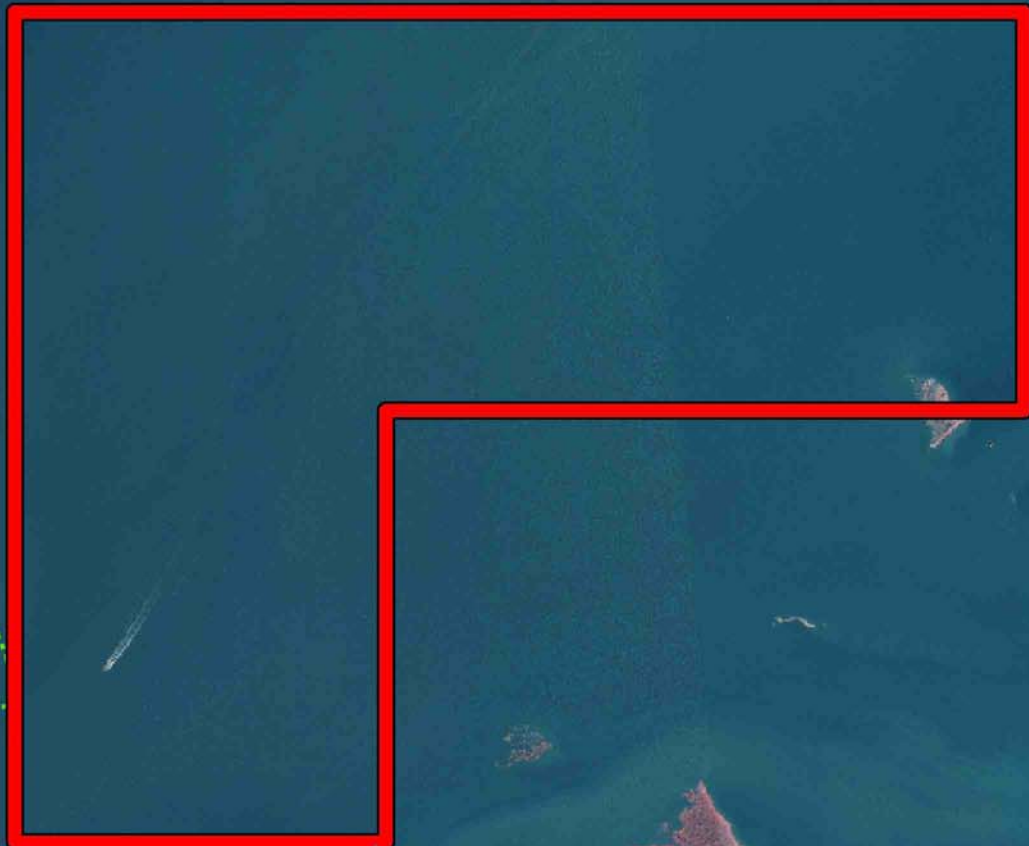
14120022



Active_Leases

PLAQUEMINES

BARATARIA BAY



SL 15858

P.O.B.

JEFFERSON

HACKBERRY BAY

T19S - R24E

2,000 Feet



TRACT 44100 - Plaquemines Parish, Louisiana

All of the lands now or formerly constituting the beds and bottoms of all water bodies of every nature and description as to which title is vested in the State of Louisiana, together with all islands arising therein and other lands formed by accretion or by reliction, where allowed by law, excepting tax adjudicated lands, and not presently under mineral lease on December 10, 2014, situated in Plaquemines Parish, Louisiana, and more particularly described as follows: Beginning at a point having Coordinates of X = 2,542,059.16 and Y = 265,206.41; thence West 13,000.00 feet to a point being Northernmost Northeast corner of State Lease No. 21143 and also the Southernmost Southeastern corner of State Lease No. 21141 having Coordinates of X = 2,529,059.16 and Y = 265,206.41; thence North 2,654.48 feet to a point being on the Eastern boundary of said State Lease No. 21141 having Coordinates of X = 2,529,059.16 and Y = 267,860.89; thence North 10,153.06 feet to a point having Coordinates of X = 2,529,059.16 and Y = 278,013.95; thence East 13,000.00 feet to a point having Coordinates of X = 2,542,059.16 and Y = 278,013.95; thence South 12,807.54 feet to the point of beginning, containing approximately **1,764 acres**, all as more particularly outlined on a plat on file in the Office of Mineral Resources, Department of Natural Resources. All bearings, distances and coordinates are based on Louisiana Coordinate System of 1927, (North or South Zone), where applicable.

NOTE: The above description of the Tract nominated for lease has been provided and corrected, where required, exclusively by the nomination party. Any mineral lease selected from this Tract and awarded by the Louisiana State Mineral and Energy Board shall be without warranty of any kind, either express, implied, or statutory, including, but not limited to, the implied warranties of merchantability and fitness for a particular purpose. Should the mineral lease awarded by the Louisiana State Mineral and Energy Board be subsequently modified, cancelled or abrogated due to the existence of conflicting leases, operating agreements, private claims or other future obligations or conditions which may affect all or any portion of the leased Tract, it shall not relieve the Lessee of the obligation to pay any bonus due thereon to the Louisiana State Mineral and Energy Board, nor shall the Louisiana State Mineral and Energy Board be obligated to refund any consideration paid by the Lessor prior to such modification, cancellation, or abrogation, including, but not limited to, bonuses, rentals and royalties.

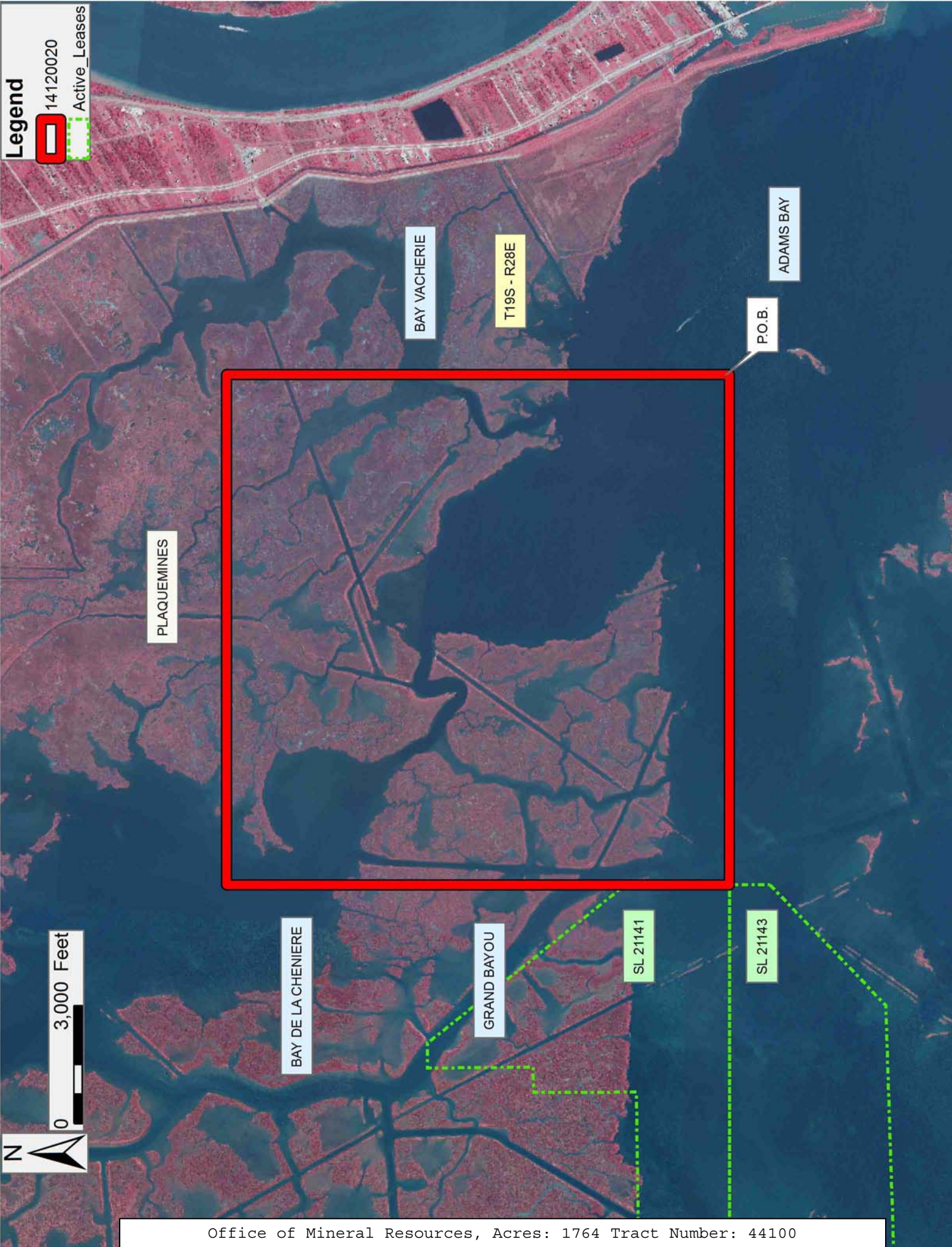
NOTE: The State of Louisiana does hereby reserve, and this lease shall be subject to, the imprescriptible right of surface use in the nature of a servitude in favor of the Department of Natural Resources, including its Offices and Commissions, for the sole purpose of implementing, constructing, servicing and maintaining approved coastal zone management and/or restoration projects. Utilization of any and all rights derived under this lease by the mineral lessee, its agents, successors or assigns, shall not interfere with nor hinder the reasonable surface use by the

Department of Natural Resources, its Offices or Commissions, as herein above reserved.

Applicant: OIL LAND SERVICES, INC.

Bidder	Cash Payment	Price/Acre	Rental	Oil	Gas	Other

Legend
14120020
Active_Leases



TRACT 44101 - Plaquemines Parish, Louisiana

All of the lands now or formerly constituting the beds and bottoms of all water bodies of every nature and description as to which title is vested in the State of Louisiana, together with all islands arising therein and other lands formed by accretion or by reliction, where allowed by law, excepting tax adjudicated lands, and not presently under mineral lease on December 10, 2014, situated in Plaquemines Parish, Louisiana, and more particularly described as follows: Beginning at a point having Coordinates of X = 2,517,450.20 and Y = 276,477.27; thence North 87 degrees 52 minutes 22 seconds East 1,056.65 to a point being the Westernmost Northwest corner of State Lease No. 20008 being also the Southwest corner of State Lease No. 20456 having Coordinates of X = 2,518,506.12 and Y = 276,516.49; thence along the boundary of said State Lease No. 20008 the following courses: South 01 degrees 56 minutes 41 seconds East 2,946.92 feet to a point having Coordinates of X = 2,518,606.13 and Y = 273,571.27; North 88 degrees 03 minutes 19 seconds East 5,750.00 feet to a point having Coordinates of X = 2,524,352.81 and Y = 273,766.41; North 01 degrees 56 minutes 41 seconds West 4,250.00 feet to its Northeast corner having Coordinates of X = 2,524,208.59 and Y = 278,013.95; thence East 4,850.57 feet to a point having Coordinates of X = 2,529,059.16 and Y = 278,013.95; thence South 10,153.06 feet to a point being on the Eastern boundary of State Lease No. 21141 having Coordinates of X = 2,529,059.16 and Y = 267,860.89; thence along the boundary of said State Lease No. 21141 the following courses: North 38 degrees 41 minutes 17 seconds West 6,453.32 feet to a point having Coordinates of X = 2,525,025.32 and Y = 272,898.10; West 637.55 feet to a point having Coordinates of X = 2,524,387.77 and Y = 272,898.10; South 00 degrees 31 minutes 40 seconds East 2,685.89 feet to a point having Coordinates of X = 2,524,412.51 and Y = 270,212.32; South 87 degrees 42 minutes 39 seconds West 643.14 feet to a point on the Eastern boundary of State Lease No. 1753 and State Lease No. 21142 having Coordinates of X = 2,523,769.88 and Y = 270,186.63; thence along the boundary of said State Lease No. 1753 and said State Lease No. 21142 the following courses: North 00 degrees 08 minutes 10 seconds West 1,973.58 feet to a point having Coordinates of X = 2,523,765.19 and Y = 272,160.20; South 89 degrees 15 minutes 00 seconds West 4,796.88 feet to a point having Coordinates of X = 2,518,968.73 and Y = 272,097.41; South 00 degrees 45 minutes 00 second East 2,101.79 feet to a point on the boundary of said State Lease No. 21141 having Coordinates of X = 2,518,996.24 and Y = 269,995.80; thence along the boundary of said State Lease No. 21141 the following courses: South 87 degrees 42 minutes 39 seconds West 406.62 feet to a point having Coordinates of X = 2,518,589.95 and Y = 269,979.56; North 01 degrees 53 minutes 25 seconds West 2,751.94 feet to a point having Coordinates of X = 2,518,499.18 and Y = 272,730.01; West 2,948.99 feet to a point having Coordinates of X = 2,515,550.19 and Y = 272,730.01; North 669.23 feet to a point on the Western boundary of said State Lease No. 21141 having Coordinates of X = 2,515,550.19 and Y = 273,399.24; thence North 950.77 feet to a point having Coordinates of X = 2,515,550.19 and Y = 274,350.01; thence North 61 degrees 03 minutes 01 seconds East 2,171.32 feet to a point having Coordinates of X = 2,517,450.20 and Y =

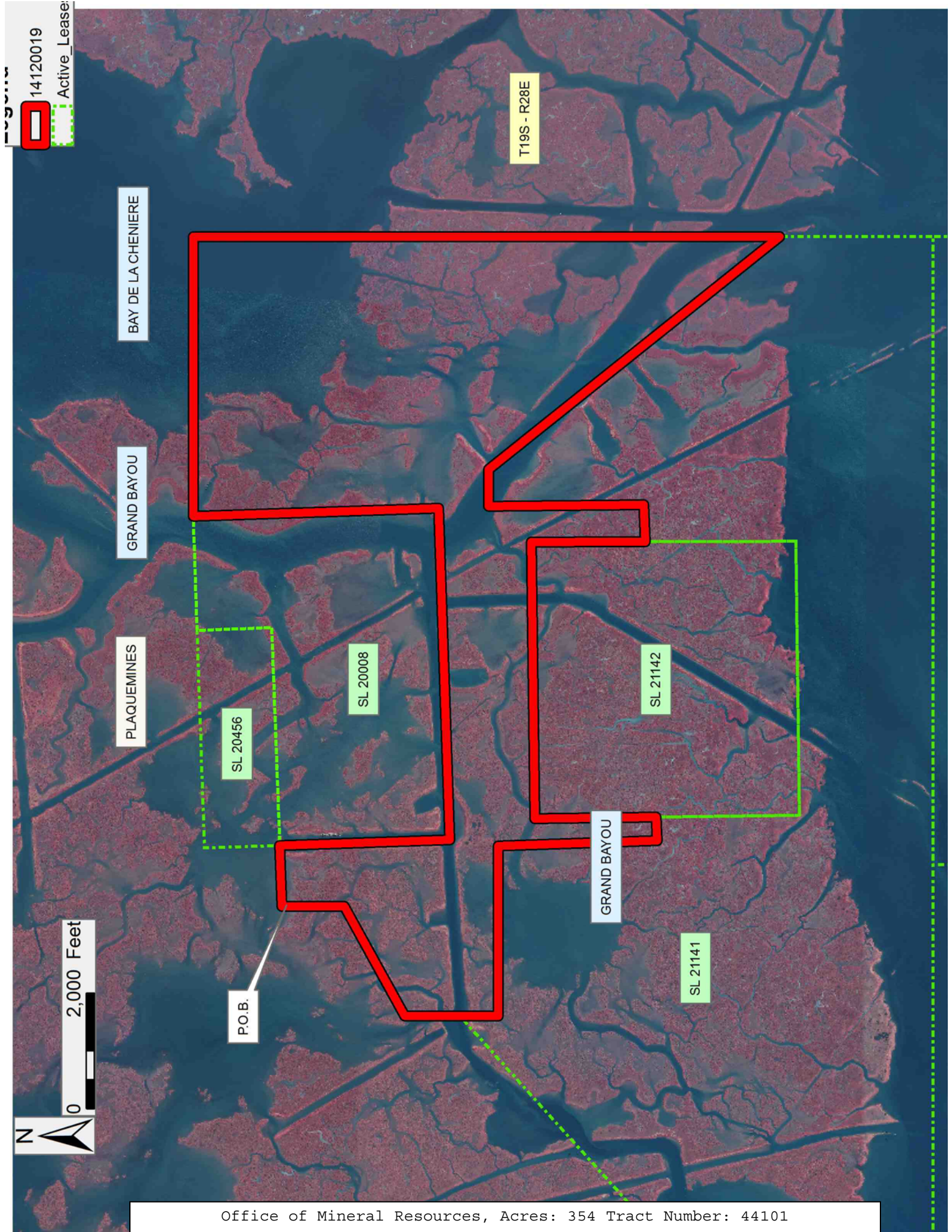
275,401.02; thence North 1,076.25 feet to the Point of Beginning, containing approximately **354 acres**, all as more particularly outlined on a plat on file in the Office of Mineral Resources, Department of Natural Resources. All bearings, distances and coordinates are based on Louisiana Coordinate System of 1927, (North or South Zone), where applicable.

NOTE: The above description of the Tract nominated for lease has been provided and corrected, where required, exclusively by the nomination party. Any mineral lease selected from this Tract and awarded by the Louisiana State Mineral and Energy Board shall be without warranty of any kind, either express, implied, or statutory, including, but not limited to, the implied warranties of merchantability and fitness for a particular purpose. Should the mineral lease awarded by the Louisiana State Mineral and Energy Board be subsequently modified, cancelled or abrogated due to the existence of conflicting leases, operating agreements, private claims or other future obligations or conditions which may affect all or any portion of the leased Tract, it shall not relieve the Lessee of the obligation to pay any bonus due thereon to the Louisiana State Mineral and Energy Board, nor shall the Louisiana State Mineral and Energy Board be obligated to refund any consideration paid by the Lessor prior to such modification, cancellation, or abrogation, including, but not limited to, bonuses, rentals and royalties.

NOTE: The State of Louisiana does hereby reserve, and this lease shall be subject to, the imprescriptible right of surface use in the nature of a servitude in favor of the Department of Natural Resources, including its Offices and Commissions, for the sole purpose of implementing, constructing, servicing and maintaining approved coastal zone management and/or restoration projects. Utilization of any and all rights derived under this lease by the mineral lessee, its agents, successors or assigns, shall not interfere with nor hinder the reasonable surface use by the Department of Natural Resources, its Offices or Commissions, as herein above reserved.

Applicant: OIL LAND SERVICES, INC.

Bidder	Cash Payment	Price/Acre	Rental	Oil	Gas	Other



14120019

Active Lease

BAY DE LA CHENIERE

GRAND BAYOU

PLAQUEMINES

SL 20456

SL 20008

SL 21142

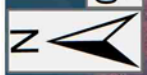
SL 21141

T19S - R28E

P.O.B.

GRAND BAYOU

0 2,000 Feet



TRACT 44102 - Plaquemines Parish, Louisiana

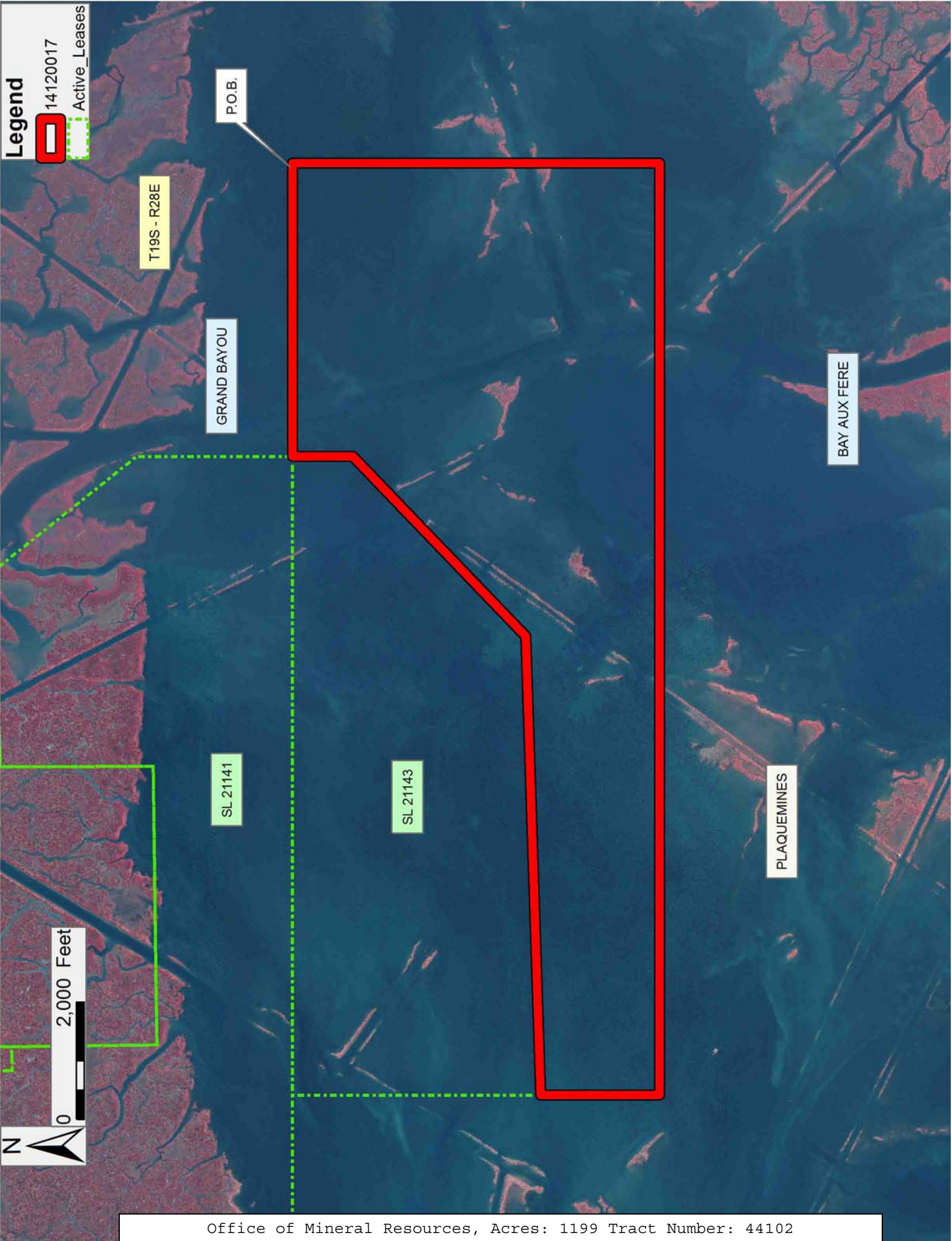
All of the lands now or formerly constituting the beds and bottoms of all water bodies of every nature and description as to which title is vested in the State of Louisiana, together with all islands arising therein and other lands formed by accretion or by reliction, where allowed by law, excepting tax adjudicated lands, and not presently under mineral lease on December 10, 2014, situated in Plaquemines Parish, Louisiana, and more particularly described as follows: Beginning at a point having Coordinates of X = 2,534,059.16 and Y = 265,206.41; thence South 6,250.00 feet to a point having Coordinates of X = 2,534,059.16 and Y = 258,956.41; thence West 15,890.00 feet to a point having Coordinates of X = 2,518,169.16 and Y = 258,956.41; thence North 2,022.08 feet to a point being the Southwest corner of State Lease No. 21143 having Coordinates of X = 2,518,169.16 and Y = 260,978.49; thence along the boundary of said State Lease No. 21143 the following courses: North 88 degrees 08 minutes 42 seconds East 7,825.41 feet to a point having Coordinates of X = 2,525,990.47 and Y = 261,231.79; North 46 degrees 09 minutes 48 seconds East 4,254.30 feet to a point having Coordinates of X = 2,529,059.16 and Y = 264,178.34; North 1,028.07 feet to a point being its Northernmost Northeast corner and also the Southernmost Southeastern corner of State Lease No. 21141 having Coordinates of X = 2,529,059.16 and Y = 265,206.41; thence East 5,000.00 feet to the point of beginning, **LESS AND EXCEPT** any right, title, and interest in lands owned by and not under lease from the State of Louisiana, on behalf of the Plaquemines Parish School Board, situated in Section 16, Township 20 South, Range 28 East, Plaquemines Parish, Louisiana, contained within the above described tract, containing approximately **1,199 acres**, all as more particularly outlined on a plat on file in the Office of Mineral Resources, Department of Natural Resources. All bearings, distances and coordinates are based on Louisiana Coordinate System of 1927, (North or South Zone), where applicable.

NOTE: The above description of the Tract nominated for lease has been provided and corrected, where required, exclusively by the nomination party. Any mineral lease selected from this Tract and awarded by the Louisiana State Mineral and Energy Board shall be without warranty of any kind, either express, implied, or statutory, including, but not limited to, the implied warranties of merchantability and fitness for a particular purpose. Should the mineral lease awarded by the Louisiana State Mineral and Energy Board be subsequently modified, cancelled or abrogated due to the existence of conflicting leases, operating agreements, private claims or other future obligations or conditions which may affect all or any portion of the leased Tract, it shall not relieve the Lessee of the obligation to pay any bonus due thereon to the Louisiana State Mineral and Energy Board, nor shall the Louisiana State Mineral and Energy Board be obligated to refund any consideration paid by the Lessor prior to such modification, cancellation, or abrogation, including, but not limited to, bonuses, rentals and royalties.

NOTE: The State of Louisiana does hereby reserve, and this lease shall be subject to, the imprescriptible right of surface use in the nature of a servitude in favor of the Department of Natural Resources, including its Offices and Commissions, for the sole purpose of implementing, constructing, servicing and maintaining approved coastal zone management and/or restoration projects. Utilization of any and all rights derived under this lease by the mineral lessee, its agents, successors or assigns, shall not interfere with nor hinder the reasonable surface use by the Department of Natural Resources, its Offices or Commissions, as herein above reserved.

Applicant: OIL LAND SERVICES, INC.

Bidder	Cash Payment	Price/Acre	Rental	Oil	Gas	Other



TRACT 44103 - Plaquemines Parish, Louisiana

All of the lands now or formerly constituting the beds and bottoms of all water bodies of every nature and description as to which title is vested in the State of Louisiana, together with all islands arising therein and other lands formed by accretion or by reliction, where allowed by law, excepting tax adjudicated lands, and not presently under mineral lease on December 10, 2014, situated in Plaquemines Parish, Louisiana, and more particularly described as follows: Beginning at a point having Coordinates of X = 2,511,102.87 and Y = 252,706.41; thence North 12,500.00 feet to a point being the Southwest corner of State Lease No. 21141 having Coordinates of X = 2,511,102.87 and Y = 265,206.41; thence East 7,066.29 feet along the Southern boundary of said State Lease No. 21141 to a point being the Northwest corner of State Lease No. 21143 having Coordinates of X = 2,518,169.16 and Y = 265,206.41; thence South 4,227.92 feet along the Western boundary of said State Lease No. 21143 to a point being the Southwest corner of said State Lease No. 21143 having Coordinates of X = 2,518,169.16 and Y = 260,978.49; thence South 8,272.08 feet to a point having the Coordinates of X = 2,518,169.16 and Y = 252,706.41; thence West 7,066.29 feet to a point of beginning, **LESS AND EXCEPT** any right, title, and interest in lands owned by and not under lease from the State of Louisiana, on behalf of the Plaquemines Parish School Board, situated in Section 16, Township 20 South, Range 27 East, Plaquemines Parish, Louisiana, contained within the above described tract, containing approximately **1,336 acres**, all as more particularly outlined on a plat on file in the Office of Mineral Resources, Department of Natural Resources. All bearings, distances and coordinates are based on Louisiana Coordinate System of 1927, (North or South Zone), where applicable.

NOTE: The above description of the Tract nominated for lease has been provided and corrected, where required, exclusively by the nomination party. Any mineral lease selected from this Tract and awarded by the Louisiana State Mineral and Energy Board shall be without warranty of any kind, either express, implied, or statutory, including, but not limited to, the implied warranties of merchantability and fitness for a particular purpose. Should the mineral lease awarded by the Louisiana State Mineral and Energy Board be subsequently modified, cancelled or abrogated due to the existence of conflicting leases, operating agreements, private claims or other future obligations or conditions which may affect all or any portion of the leased Tract, it shall not relieve the Lessee of the obligation to pay any bonus due thereon to the Louisiana State Mineral and Energy Board, nor shall the Louisiana State Mineral and Energy Board be obligated to refund any consideration paid by the Lessor prior to such modification, cancellation, or abrogation, including, but not limited to, bonuses, rentals and royalties.

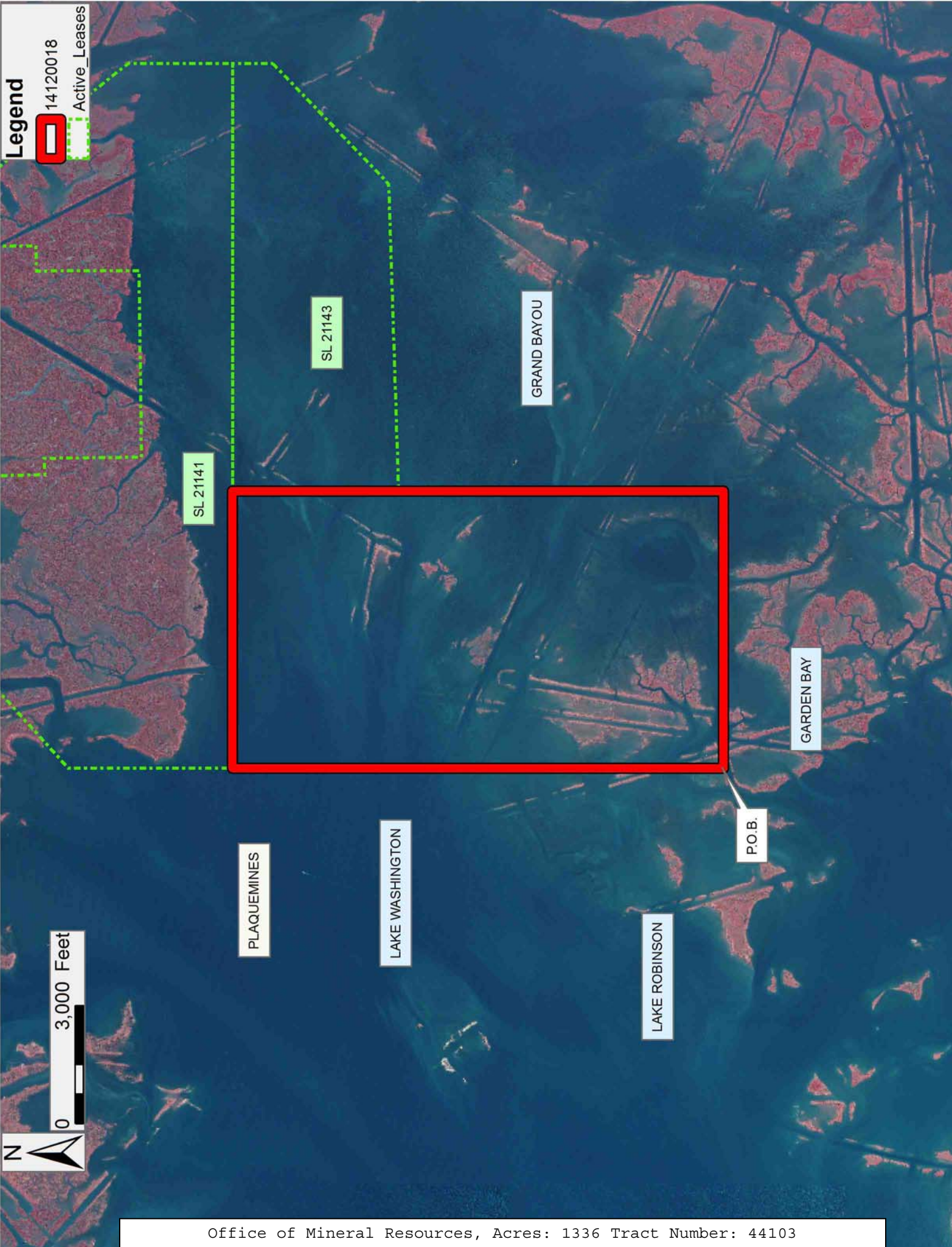
NOTE: The State of Louisiana does hereby reserve, and this lease shall be subject to, the imprescriptible right of surface use in the nature of a servitude in favor of the Department of Natural Resources, including its Offices and Commissions, for the sole purpose of implementing,

constructing, servicing and maintaining approved coastal zone management and/or restoration projects. Utilization of any and all rights derived under this lease by the mineral lessee, its agents, successors or assigns, shall not interfere with nor hinder the reasonable surface use by the Department of Natural Resources, its Offices or Commissions, as herein above reserved.

Applicant: OIL LAND SERVICES, INC.

Bidder	Cash Payment	Price/Acre	Rental	Oil	Gas	Other

Legend
14120018
Active_Leases



TRACT 44104 - Plaquemines Parish, Louisiana

All of the lands now or formerly constituting the beds and bottoms of all water bodies of every nature and description as to which title is vested in the State of Louisiana, together with all islands arising therein and other lands formed by accretion or by reliction, where allowed by law, excepting tax adjudicated lands, and not presently under mineral lease on December 10, 2014, situated in Plaquemines Parish, Louisiana, and more particularly described as follows: Beginning at a point having Coordinates of X = 2,534,059.16 and Y = 258,956.41; thence South 6,250.00 feet to a point having Coordinates of X = 2,534,059.16 and Y = 252,706.41; thence West 15,890.00 feet to a point having Coordinates of X = 2,518,169.16 and Y = 252,706.41; thence North 6,250.00 feet to a point having Coordinates of X = 2,518,169.16 and Y = 258,956.41; thence East 15,890.00 feet to the point of beginning, **LESS AND EXCEPT** any right, title, and interest in lands owned by and not under lease from the State of Louisiana, on behalf of the Plaquemines Parish School Board, situated in Section 16, Township 20 South, Range 28 East, Plaquemines Parish, Louisiana, contained within the above described tract, containing approximately **1,497 acres**, all as more particularly outlined on a plat on file in the Office of Mineral Resources, Department of Natural Resources. All bearings, distances and coordinates are based on Louisiana Coordinate System of 1927, (North or South Zone), where applicable.

NOTE: The above description of the Tract nominated for lease has been provided and corrected, where required, exclusively by the nomination party. Any mineral lease selected from this Tract and awarded by the Louisiana State Mineral and Energy Board shall be without warranty of any kind, either express, implied, or statutory, including, but not limited to, the implied warranties of merchantability and fitness for a particular purpose. Should the mineral lease awarded by the Louisiana State Mineral and Energy Board be subsequently modified, cancelled or abrogated due to the existence of conflicting leases, operating agreements, private claims or other future obligations or conditions which may affect all or any portion of the leased Tract, it shall not relieve the Lessee of the obligation to pay any bonus due thereon to the Louisiana State Mineral and Energy Board, nor shall the Louisiana State Mineral and Energy Board be obligated to refund any consideration paid by the Lessor prior to such modification, cancellation, or abrogation, including, but not limited to, bonuses, rentals and royalties.

NOTE: The State of Louisiana does hereby reserve, and this lease shall be subject to, the imprescriptible right of surface use in the nature of a servitude in favor of the Department of Natural Resources, including its Offices and Commissions, for the sole purpose of implementing, constructing, servicing and maintaining approved coastal zone management and/or restoration projects. Utilization of any and all rights derived under this lease by the mineral lessee, its agents, successors or assigns, shall not interfere with nor hinder the reasonable surface use by the

Department of Natural Resources, its Offices or Commissions, as herein above reserved.

Applicant: OIL LAND SERVICES, INC.

Bidder	Cash Payment	Price/Acre	Rental	Oil	Gas	Other



0 2,000 Feet

Legend



14120021

PLAQUEMINES

GRAND BAYOU

P.O.B.

BAYOU COOK



TRACT 44105 - Plaquemines Parish, Louisiana

All of the lands now or formerly constituting the beds and bottoms of all water bodies of every nature and description as to which title is vested in the State of Louisiana, together with all islands arising therein and other lands formed by accretion or by reliction, where allowed by law, excepting tax adjudicated lands, and not presently under mineral lease on December 10, 2014, situated in Plaquemines Parish, Louisiana, and more particularly described as follows: Beginning at an intersection point on the South boundary of State Lease No. 19250 and North boundary of Operating Agreement 0220 having Coordinates of X = 2,573,034.63 and Y = 249,244.76; thence along the boundary of said State Lease No. 19250 the following courses: North 33 degrees 13 minutes 03 seconds East 3,047.92 feet to a point having Coordinates of X = 2,574,704.34 and Y = 251,794.64; North 61 degrees 13 minutes 46 seconds West 1,911.98 feet to a point having Coordinates of X = 2,573,028.39 and Y = 252,714.88; South 33 degrees 13 minutes 16 seconds West 3,806.75 feet to a point having Coordinates of X = 2,570,942.78 and Y = 249,530.29; South 33 degrees 13 minutes 16 seconds West approximately 149.47 feet to an intersection point on the South boundary of said State Lease No. 19250 and the North boundary of State Lease No. 192, as amended; thence along the North boundary of said State Lease No. 192, as amended, Westerly and Southerly approximately 822 feet to a point on the Eastern boundary of State Lease No. 21071; thence along said State Lease No. 21071 the following courses: North 53 degrees 32 minutes 34 seconds West approximately 946 feet to a point having Coordinates of X = 2,569,403.70 and Y = 249,698.71; North 36 degrees 21 minutes 57 seconds East 1,039.40 feet to a point being the Southernmost Southeastern corner of State Lease No. 21133 having Coordinates of X = 2,570,020.00 and Y = 250,535.68; thence North 36 degrees 21 minutes 57 seconds East 3,876.00 feet along the Eastern boundary of said State Lease No. 21133 to a point being the Northeast corner of said State Lease No. 21133 having Coordinates of X = 2,572,318.23 and Y = 253,656.82; thence North 36 degrees 21 minutes 57 seconds East 362.09 feet to a point having Coordinates of X = 2,572,532.93 and Y = 253,948.39; thence South 54 degrees 27 minutes 06 seconds East 4,307.30 feet to a point having Coordinates of X = 2,576,037.46 and Y = 251,444.18; thence South 36 degrees 24 minutes 45 seconds West 3,267.91 feet to a point having Coordinates of X = 2,574,097.65 and Y = 248,814.28; thence North 197.07 feet to a point being the Southeast corner of said Operating Agreement 0220 and Northeast corner of State Lease No. 13566 having Coordinates of X = 2,574,097.65 and Y = 249,011.35; thence North 314.62 feet to the Northeast corner of said Operating Agreement 0220 having Coordinates of X = 2,574,097.65 and Y = 249,325.97; thence along the North boundary of said Operating Agreement 0220 the following courses: South 87 degrees 59 minutes 27 seconds West 27.67 feet to a point having Coordinates of X = 2,574,070.00 and Y = 249,325.00; South 87 degrees 29 minutes 22 seconds West 256.14 feet to a point having Coordinates of X = 2,573,814.11 and Y = 249,313.78; South 85 degrees 56 minutes 38 seconds West 574.84 feet to a point having Coordinates of X = 2,573,240.71 and Y = 249,273.12; South 82 degrees 09 minutes 52 seconds West 208.02 feet to the

point of beginning, **LESS AND EXCEPT**, that portion, if any, of State of Louisiana State Lease No. 192, as amended, that may lie within the above described tract, containing approximately **132 acres**, all as more particularly outlined on a plat on file in the Office of Mineral Resources, Department of Natural Resources. All bearings, distances and coordinates are based on Louisiana Coordinate System of 1927, (North or South Zone), where applicable.

NOTE: The above description of the Tract nominated for lease has been provided and corrected, where required, exclusively by the nomination party. Any mineral lease selected from this Tract and awarded by the Louisiana State Mineral and Energy Board shall be without warranty of any kind, either express, implied, or statutory, including, but not limited to, the implied warranties of merchantability and fitness for a particular purpose. Should the mineral lease awarded by the Louisiana State Mineral and Energy Board be subsequently modified, cancelled or abrogated due to the existence of conflicting leases, operating agreements, private claims or other future obligations or conditions which may affect all or any portion of the leased Tract, it shall not relieve the Lessee of the obligation to pay any bonus due thereon to the Louisiana State Mineral and Energy Board, nor shall the Louisiana State Mineral and Energy Board be obligated to refund any consideration paid by the Lessor prior to such modification, cancellation, or abrogation, including, but not limited to, bonuses, rentals and royalties.

NOTE: The State of Louisiana does hereby reserve, and this lease shall be subject to, the imprescriptible right of surface use in the nature of a servitude in favor of the Department of Natural Resources, including its Offices and Commissions, for the sole purpose of implementing, constructing, servicing and maintaining approved coastal zone management and/or restoration projects. Utilization of any and all rights derived under this lease by the mineral lessee, its agents, successors or assigns, shall not interfere with nor hinder the reasonable surface use by the Department of Natural Resources, its Offices or Commissions, as herein above reserved.

Applicant: OIL LAND SERVICES, INC.

Bidder	Cash Payment	Price/Acre	Rental	Oil	Gas	Other

14120016
Active Lease



TRACT 44106 - Terrebonne Parish, Louisiana

All of the lands now or formerly constituting the beds and bottoms of all water bodies of every nature and description as to which title is vested in the State of Louisiana, together with all islands arising therein and other lands formed by accretion or by reliction, where allowed by law, excepting tax adjudicated lands, and not presently under mineral lease on December 10, 2014, situated in Terrebonne Parish, Louisiana, and more particularly described as follows: Beginning at a point on the Southern boundary of State Lease No. 724, as amended having Coordinates of X = 2,180,570.58 and Y = 193,788.88; thence North 89 degrees 43 minutes 25 seconds East 6,275.95 feet along the Southern boundary of said State Lease No. 724 to its Southeast corner having Coordinates of X = 2,186,846.46 and Y = 193,819.16; thence North 87 degrees 00 minutes 35 seconds East 2,179.75 feet to a point having Coordinates of X = 2,189,023.25 and Y = 193,932.87; thence South 8,391.15 feet to a point having Coordinates of X = 2,189,023.25 and Y = 185,541.73; thence West 8,452.67 feet to a point having Coordinates of X = 2,180,570.58 and Y = 185,541.73; thence North 8,247.16 feet to the point of beginning, containing approximately **317 acres**, all as more particularly outlined on a plat on file in the Office of Mineral Resources, Department of Natural Resources. All bearings, distances and coordinates are based on Louisiana Coordinate System of 1927, (North or South Zone), where applicable.

NOTE: The above description of the Tract nominated for lease has been provided and corrected, where required, exclusively by the nomination party. Any mineral lease selected from this Tract and awarded by the Louisiana State Mineral and Energy Board shall be without warranty of any kind, either express, implied, or statutory, including, but not limited to, the implied warranties of merchantability and fitness for a particular purpose. Should the mineral lease awarded by the Louisiana State Mineral and Energy Board be subsequently modified, cancelled or abrogated due to the existence of conflicting leases, operating agreements, private claims or other future obligations or conditions which may affect all or any portion of the leased Tract, it shall not relieve the Lessee of the obligation to pay any bonus due thereon to the Louisiana State Mineral and Energy Board, nor shall the Louisiana State Mineral and Energy Board be obligated to refund any consideration paid by the Lessor prior to such modification, cancellation, or abrogation, including, but not limited to, bonuses, rentals and royalties.

NOTE: The State of Louisiana does hereby reserve, and this lease shall be subject to, the imprescriptible right of surface use in the nature of a servitude in favor of the Department of Natural Resources, including its Offices and Commissions, for the sole purpose of implementing, constructing, servicing and maintaining approved coastal zone management and/or restoration projects. Utilization of any and all rights derived under this lease by the mineral lessee, its agents, successors or assigns, shall not interfere with nor hinder the reasonable surface use by the

Department of Natural Resources, its Offices or Commissions, as herein above reserved.

Applicant: CYPRESS ENERGY CORPORATION

Bidder	Cash Payment	Price/Acre	Rental	Oil	Gas	Other

Legend

14120013

Active_Leases

