

TRACT 41221 - Terrebonne Parish, Louisiana

All of the lands now or formerly constituting the beds and bottoms of all water bodies of every nature and description as to which title is vested in the State of Louisiana, together with all islands arising therein and other lands formed by accretion or by reliction, where allowed by law, excepting tax adjudicated lands, and not presently under mineral lease on December 9, 2009, situated in Terrebonne Parish, Louisiana, and more particularly described as follows: Beginning at the Southeast corner of State Lease No. 17174, as amended, having Coordinates of X = 2,156,880.00 and Y = 261,620.00; thence South 3,740.79 feet to a point having Coordinates of X = 2,156,880.00 and Y = 257,879.21; thence West 15,746.04 feet to a point having Coordinates of X = 2,141,133.96 and Y = 257,879.21; thence North 11,747.35 feet to a point having Coordinates of X = 2,141,133.96 and Y = 269,626.56; thence East 4,091.90 feet to point having Coordinates of X = 2,145,225.86 and Y = 269,626.56; thence South 00 degrees 57 minutes 32 seconds East 8,007.68 feet to a point having Coordinates of X = 2,145,359.86 and Y = 261,620.00; thence East 6,240.14 feet to the Southwest corner of said State Lease No. 17174 having Coordinates of X = 2,151,600.00 and Y = 261,620.00; thence East 5,280.00 feet along the South boundary of said State Lease No. 17174 to the point of beginning, containing approximately **967 acres**, all as more particularly outlined on a plat on file in the Office of Mineral Resources, Department of Natural Resources. All bearings, distances and coordinates are based on Louisiana Coordinate System of 1927, (North or South Zone), where applicable.

NOTE: The above description of the Tract nominated for lease has been provided and corrected, where required, exclusively by the nomination party. Any mineral lease selected from this Tract and awarded by the Louisiana State Mineral Board shall be without warranty of any kind, either express, implied, or statutory, including, but not limited to, the implied warranties of merchantability and fitness for a particular purpose. Should the mineral lease awarded by the Louisiana State Mineral Board be subsequently modified, cancelled or abrogated due to the existence of conflicting leases, operating agreements, private claims or other future obligations or conditions which may affect all or any portion of the leased Tract, it shall not relieve the Lessee of the obligation to pay any bonus due thereon to the Louisiana State Mineral Board, nor shall the Louisiana State Mineral Board be obligated to refund any consideration paid by the Lessor prior to such modification, cancellation, or abrogation, including, but not limited to, bonuses, rentals and royalties.

NOTE: The State of Louisiana does hereby reserve, and this lease shall be subject to, the imprescriptible right of surface use in the nature of a servitude in favor of the Department of Natural Resources, including its Offices and Commissions, for the sole purpose of implementing, constructing, servicing and maintaining approved coastal zone management and/or restoration projects. Utilization of any and all rights derived under this lease by the mineral lessee, its agents, successors or assigns,

shall not interfere with nor hinder the reasonable surface use by the Department of Natural Resources, its Offices or Commissions, as herein above reserved.

Applicant: ROBERT A. SCHROEDER, INC.

Bidder	Cash Payment	Price/Acre	Rental	Oil	Gas	Other

Legend
09/12/20019
Active_Leases
DOQQ2004

TERREBONNE PARISH

T19S - R16E

LAKE DE CADE

SL 17174

P.O.B.

T19S - R15E



TRACT 41222 - Terrebonne Parish, Louisiana

All of the lands now or formerly constituting the beds and bottoms of all water bodies of every nature and description as to which title is vested in the State of Louisiana, together with all islands arising therein and other lands formed by accretion or by reliction, where allowed by law, excepting tax adjudicated lands, and not presently under mineral lease on December 9, 2009, situated in Terrebonne Parish, Louisiana, and more particularly described as follows: Beginning at the Northeast corner of State Lease No. 19975 having Coordinates of X = 2,135,452.79 and Y = 269,626.56; thence East 5,681.17 feet to a point having Coordinates of X = 2,141,133.96 and Y = 269,626.56; thence South 11,747.35 feet to a point having Coordinates of X = 2,141,133.96 and Y = 257,879.21; thence West 10,489.30 feet to a point having Coordinates of X = 2,130,644.66 and Y = 257,879.21; thence North 6,062.31 feet to a point on the South boundary of State Lease No. 19977 having Coordinates of X = 2,130,644.66 and Y = 263,941.52; thence along the boundary of said State Lease No. 19977 the following courses: East 4,808.13 feet to its Southeast corner having Coordinates of X = 2,135,452.79 and Y = 263,941.52 and North 700.00 feet to its Northeast corner, also being the Southeast corner of said State Lease No. 19975 having Coordinates of X = 2,135,452.79 and Y = 264,641.52; thence North 4,985.04 feet along the East boundary of said State Lease No. 19975 to the point of beginning, **LESS AND EXCEPT** all of State Lease Nos. 20022, 20023 and 20024 which lie within the above described tract, being more fully described as follows: Commencing at the point of beginning of the above described nominated tract having Coordinates of X = 2,135,452.79 and Y = 269,626.56; thence South 32 degrees 38 minutes 24 seconds East 4,047.80 feet to the Northwest corner of State Lease No. 20022 having Coordinates of X = 2,137,636.00 and Y = 266,218.00; thence South 81 degrees 33 minutes 34 seconds East 532.61 feet along the North boundary of said State Lease No. 20022 to its Northeast corner, also being the Northwest corner of State Lease No. 20023 having Coordinates of X = 2,138,162.84 and Y = 266,139.82; thence along the boundary of said State Lease No. 20023 the following courses: South 81 degrees 33 minutes 34 seconds East 1,477.16 feet to a point having Coordinates of X = 2,139,624.00 and Y = 265,923.00; South 00 degrees 52 minutes 49 seconds West 3,840.45 feet to a point having Coordinates of X = 2,139,565.00 and Y = 262,083.00 and South 89 degrees 42 minutes 27 seconds West 1,402.18 feet to its Southwest corner, also being the Southeast corner of State Lease No. 20024 having Coordinates of X = 2,138,162.84 and Y = 262,075.84; thence along the boundary of said State Lease No. 20024 the following courses: South 89 degrees 42 minutes 27 seconds West 556.85 feet to a point having Coordinates of X = 2,137,606.00 and Y = 262,073.00; North 42 degrees 28 minutes 40 seconds West 2,040.57 feet to a point having Coordinates of X = 2,136,228.00 and Y = 263,578.00 and North 28 degrees 04 minutes 21 seconds East 1,205.32 feet to its Northwest corner, also being the Southwest corner of said State Lease No. 20022 having Coordinates of X = 2,136,795.21 and Y = 264,641.52; thence North 28 degrees 04 minutes 21 seconds East 1,786.68 feet along the Western boundary of said State Lease No. 20022 to its Northwest corner having Coordinates of X = 2,137,636.00

and Y = 266,218.00; the above described nominated tract containing approximately **641 acres**, all as more particularly outlined on a plat on file in the Office of Mineral Resources, Department of Natural Resources. All bearings, distances and coordinates are based on Louisiana Coordinate System of 1927, (North or South Zone), where applicable.

NOTE: The above description of the Tract nominated for lease has been provided and corrected, where required, exclusively by the nomination party. Any mineral lease selected from this Tract and awarded by the Louisiana State Mineral Board shall be without warranty of any kind, either express, implied, or statutory, including, but not limited to, the implied warranties of merchantability and fitness for a particular purpose. Should the mineral lease awarded by the Louisiana State Mineral Board be subsequently modified, cancelled or abrogated due to the existence of conflicting leases, operating agreements, private claims or other future obligations or conditions which may affect all or any portion of the leased Tract, it shall not relieve the Lessee of the obligation to pay any bonus due thereon to the Louisiana State Mineral Board, nor shall the Louisiana State Mineral Board be obligated to refund any consideration paid by the Lessor prior to such modification, cancellation, or abrogation, including, but not limited to, bonuses, rentals and royalties.

NOTE: The State of Louisiana does hereby reserve, and this lease shall be subject to, the imprescriptible right of surface use in the nature of a servitude in favor of the Department of Natural Resources, including its Offices and Commissions, for the sole purpose of implementing, constructing, servicing and maintaining approved coastal zone management and/or restoration projects. Utilization of any and all rights derived under this lease by the mineral lessee, its agents, successors or assigns, shall not interfere with nor hinder the reasonable surface use by the Department of Natural Resources, its Offices or Commissions, as herein above reserved.

Applicant: ROBERT A. SCHROEDER, INC.

Bidder	Cash Payment	Price/Acre	Rental	Oil	Gas	Other

Legend
09/12/20018
Active_Leases
DOQQ2004

T19S - R15E

LAKE DE CADE

TERREBONNE PARISH

P.O.B.

SL 20022

SL 20023

SL 20024

SL 19975

SL 19977

BAYOU DE CADE

TURTLE BAYOU



TRACT 41223 - Plaquemines Parish, Louisiana

All of the lands now or formerly constituting the beds and bottoms of all water bodies of every nature and description as to which title is vested in the State of Louisiana, together with all islands arising therein and other lands formed by accretion or by reliction, where allowed by law, excepting tax adjudicated lands, and not presently under mineral lease on December 9, 2009, situated in Plaquemines Parish, Louisiana, and more particularly described as follows: Beginning at a point having Coordinates of X = 2,449,922.00 and Y = 262,860.13; thence East 14,524.00 feet to a point having Coordinates of X = 2,464,446.00 and Y = 262,860.13; thence South 7,450.00 feet to a point having Coordinates of X = 2,464,446.00 and Y = 255,410.13; thence West 14,524.00 feet to a point having Coordinates of X = 2,449,922.00 and Y = 255,410.13; thence North 7,450.00 feet to the point of beginning, containing approximately **2,465 acres**, all as more particularly outlined on a plat on file in the Office of Mineral Resources, Department of Natural Resources. All bearings, distances and coordinates are based on Louisiana Coordinate System of 1927, (North or South Zone), where applicable.

NOTE: The above description of the Tract nominated for lease has been provided and corrected, where required, exclusively by the nomination party. Any mineral lease selected from this Tract and awarded by the Louisiana State Mineral Board shall be without warranty of any kind, either express, implied, or statutory, including, but not limited to, the implied warranties of merchantability and fitness for a particular purpose. Should the mineral lease awarded by the Louisiana State Mineral Board be subsequently modified, cancelled or abrogated due to the existence of conflicting leases, operating agreements, private claims or other future obligations or conditions which may affect all or any portion of the leased Tract, it shall not relieve the Lessee of the obligation to pay any bonus due thereon to the Louisiana State Mineral Board, nor shall the Louisiana State Mineral Board be obligated to refund any consideration paid by the Lessor prior to such modification, cancellation, or abrogation, including, but not limited to, bonuses, rentals and royalties.

NOTE: The State of Louisiana does hereby reserve, and this lease shall be subject to, the imprescriptible right of surface use in the nature of a servitude in favor of the Department of Natural Resources, including its Offices and Commissions, for the sole purpose of implementing, constructing, servicing and maintaining approved coastal zone management and/or restoration projects. Utilization of any and all rights derived under this lease by the mineral lessee, its agents, successors or assigns, shall not interfere with nor hinder the reasonable surface use by the Department of Natural Resources, its Offices or Commissions, as herein above reserved.

NOTE: The Department of Wildlife and Fisheries has designated certain areas in the coastal waters of the State of Louisiana as Oyster Seed Bed Areas. The exact location of those Seed Bed Areas must be obtained from

the Department of Wildlife and Fisheries and any work done under a mineral lease from the State of Louisiana may necessarily be conducted in conformity with the rules and regulations promulgated by the said Department of Wildlife and Fisheries for Oyster Seed Bed Areas.

Applicant: HAROLD J. ANDERSON, INC.

Bidder	Cash Payment	Price/Acre	Rental	Oil	Gas	Other

PLAQUEMINES PARISH

BARATARIA BAY



P.O.B.



TRACT 41224 - Terrebonne Parish, Louisiana

All of the lands now or formerly constituting the beds and bottoms of all water bodies of every nature and description as to which title is vested in the State of Louisiana, together with all islands arising therein and other lands formed by accretion or by reliction, where allowed by law, excepting tax adjudicated lands, and not presently under mineral lease on December 9, 2009, situated in Terrebonne Parish, Louisiana, and more particularly described as follows: Beginning at a point having Coordinates of X = 2,257,800.00 and Y = 263,294.87; thence East 9,988.53 feet to a point at the Northwest corner of State Lease No. 18871, Parcel A, as amended, having Coordinates of X = 2,267,788.53 and Y = 263,294.88; thence South 1,543.69 feet to a point at the Southwest corner of said State Lease No. 18871, Parcel A, as amended, having Coordinates of X = 2,267,788.53 and Y = 261,751.19; along the Southern boundary of said State Lease No. 18871, Parcel A, as amended, thence North 68 Degrees 59 Minutes 51 Seconds East 185.65 feet; thence along a curve to the right having a radius of 6,500.00 feet, an arc length of 826.86 feet, and a long chord of North 72 Degrees 15 Minutes 37 Seconds East 826.30 feet; thence along a curve to the right having a radius of 6,500.00 feet, an arc length of 839.32 feet, and a long chord of North 77 Degrees 49 Minutes 40 Seconds East 838.74 feet; thence along a curve to the right having a radius of 5,500.00 feet, an arc length of 691.86 feet, and a long chord of North 83 Degrees 57 Minutes 32 Seconds East 691.40 feet; thence North 88 Degrees 15 Minutes 45 Seconds East 1,277.82 feet to a point at the Southeast corner of said State Lease No. 18871, Parcel A, as amended, having Coordinates of X = 2,271,533.53 and Y = 262,357.85; thence North 937.02 feet to a point at the Northeast corner of said State Lease no. 18871, Parcel A, as amended, having Coordinates of X = 2,271,533.53 and Y = 263,294.87; thence East 966.47 feet to a point having Coordinates of X = 2,272,500.00 feet and Y = 263,294.87 feet; thence South 5,000.00 feet to a point having Coordinates of X = 2,272,500.00 and Y = 258,294.87; thence West 14,700.00 feet to a point having Coordinates of X = 2,257,800.00 and Y = 258,294.87; totaling thence North 5,000.00 feet to the point of beginning, **LESS AND EXCEPT** all of that portion of State Lease No. 18871, Parcel B, as amended, that may lie within the above described tract, being more particularly described as follows: Beginning at a point being the Point of Beginning of said nominated tract having Coordinates of X = 2,257,800.00 and Y = 263,294.87; thence South 82 Degrees 14 Minutes 46 Seconds East 11,599.66 feet to a point being the Point of Beginning of Parcel B of said State Lease No. 18871 having Coordinates of X = 2,269,293.60 and Y = 261,729.85; thence North 88 Degrees 07 Minutes 47 Seconds East 1,319.16 feet to a point having Coordinates of X = 2,270,612.06 and Y = 261,772.90; thence South 17 Degrees 48 Minutes 25 Seconds East 302.34 feet to a point having Coordinates of X = 2,270,704.52 feet and Y = 261,485.05 feet; thence North 69 Degrees 58 Minutes 23 Seconds East 458.04 feet to a point having Coordinates of X = 2,271,134.86 and Y = 261,641.91; thence North 06 Degrees 25 Minutes 05 Seconds West 148.45 feet to a point having Coordinates of X = 2,271,118.27 and Y = 261,789.43; thence North 88 Degrees 07 Minutes 47 Seconds East 415.48 feet to a point having

Coordinates of X = 2,271,533.52 feet and Y = 261,802.99 feet; thence South 1,720.39 feet to a point having Coordinates of X = 2,271,533.52 and Y = 260,082.60; thence South 88 Degrees 07 Minutes 47 Seconds West 2,184.98 feet to a point having Coordinates of X = 2,269,349.71 and Y = 260,011.29; thence North 01 Degree 52 Minutes 13 Seconds West 1,719.47 feet to the point of beginning, containing approximately **79 acres**, all as more particularly outlined on a plat on file in the Office of Mineral Resources, Department of Natural Resources. All bearings, distances and coordinates are based on Louisiana Coordinate System of 1927, (North or South Zone), where applicable.

NOTE: The above description of the Tract nominated for lease has been provided and corrected, where required, exclusively by the nomination party. Any mineral lease selected from this Tract and awarded by the Louisiana State Mineral Board shall be without warranty of any kind, either express, implied, or statutory, including, but not limited to, the implied warranties of merchantability and fitness for a particular purpose. Should the mineral lease awarded by the Louisiana State Mineral Board be subsequently modified, cancelled or abrogated due to the existence of conflicting leases, operating agreements, private claims or other future obligations or conditions which may affect all or any portion of the leased Tract, it shall not relieve the Lessee of the obligation to pay any bonus due thereon to the Louisiana State Mineral Board, nor shall the Louisiana State Mineral Board be obligated to refund any consideration paid by the Lessor prior to such modification, cancellation, or abrogation, including, but not limited to, bonuses, rentals and royalties.

NOTE: The State of Louisiana does hereby reserve, and this lease shall be subject to, the imprescriptible right of surface use in the nature of a servitude in favor of the Department of Natural Resources, including its Offices and Commissions, for the sole purpose of implementing, constructing, servicing and maintaining approved coastal zone management and/or restoration projects. Utilization of any and all rights derived under this lease by the mineral lessee, its agents, successors or assigns, shall not interfere with nor hinder the reasonable surface use by the Department of Natural Resources, its Offices or Commissions, as herein above reserved.

Bidder	Cash Payment	Price/Acre	Rental	Oil	Gas	Other

Applicant: SPECTER EXPLORATION, INC.

Legend

09/12/20058

Active_Leases

DOQQ2004

T19S - R19E

BAYOU ST JEAN CHARLES

SL 18871

SL 18871

TERREBONNE PARISH

BAYOU GUILLAME

BAY BAPTISTE

P.O.B.

0 2,000 Feet

TRACT 41225 - Jefferson and Plaquemines Parishes, Louisiana

All of the lands now or formerly constituting the beds and bottoms of all water bodies of every nature and description as to which title is vested in the State of Louisiana, together with all islands arising therein and other lands formed by accretion or by reliction, where allowed by law, excepting tax adjudicated lands, and not presently under mineral lease on December 9, 2009, situated in Jefferson and Plaquemines Parishes, Louisiana, and more particularly described as follows: Beginning at a point having Coordinates of X = 2,434,556.69 and Y = 260,460.13; thence East 15,365.31 feet to a point having Coordinates of X = 2,449,922.00 and Y = 260,460.13; thence South 9,657.96 feet to a point having Coordinates of X = 2,449,922.00 and Y = 250,802.17; thence West 5,051.61 feet to a point on the East boundary of a portion of State Lease No. 356, as amended, having Coordinates of X = 2,444,870.39 and Y = 250,802.17; thence along the boundary of said portion of State Lease No. 356 the following courses: thence North 00 degrees 38 minutes 20 seconds West 4,595.82 feet to its Northeast corner having Coordinates of X = 2,444,819.14 and Y = 255,397.70 and South 89 degrees 21 minutes 40 seconds West 10,263.09 feet to a point having Coordinates of X = 2,434,556.69 and Y = 255,283.26; thence North 5,176.87 feet to the point of beginning, containing approximately **2,334.84 acres**, all as more particularly outlined on a plat on file in the Office of Mineral Resources, Department of Natural Resources. All bearings, distances and coordinates are based on Louisiana Coordinate System of 1927, (North or South Zone), where applicable.

NOTE: The above description of the Tract nominated for lease has been provided and corrected, where required, exclusively by the nomination party. Any mineral lease selected from this Tract and awarded by the Louisiana State Mineral Board shall be without warranty of any kind, either express, implied, or statutory, including, but not limited to, the implied warranties of merchantability and fitness for a particular purpose. Should the mineral lease awarded by the Louisiana State Mineral Board be subsequently modified, cancelled or abrogated due to the existence of conflicting leases, operating agreements, private claims or other future obligations or conditions which may affect all or any portion of the leased Tract, it shall not relieve the Lessee of the obligation to pay any bonus due thereon to the Louisiana State Mineral Board, nor shall the Louisiana State Mineral Board be obligated to refund any consideration paid by the Lessor prior to such modification, cancellation, or abrogation, including, but not limited to, bonuses, rentals and royalties.

NOTE: The State of Louisiana does hereby reserve, and this lease shall be subject to, the imprescriptible right of surface use in the nature of a servitude in favor of the Department of Natural Resources, including its Offices and Commissions, for the sole purpose of implementing, constructing, servicing and maintaining approved coastal zone management and/or restoration projects. Utilization of any and all rights derived under this lease by the mineral lessee, its agents, successors or assigns, shall not interfere with nor hinder the reasonable surface use by the

Department of Natural Resources, its Offices or Commissions, as herein above reserved.

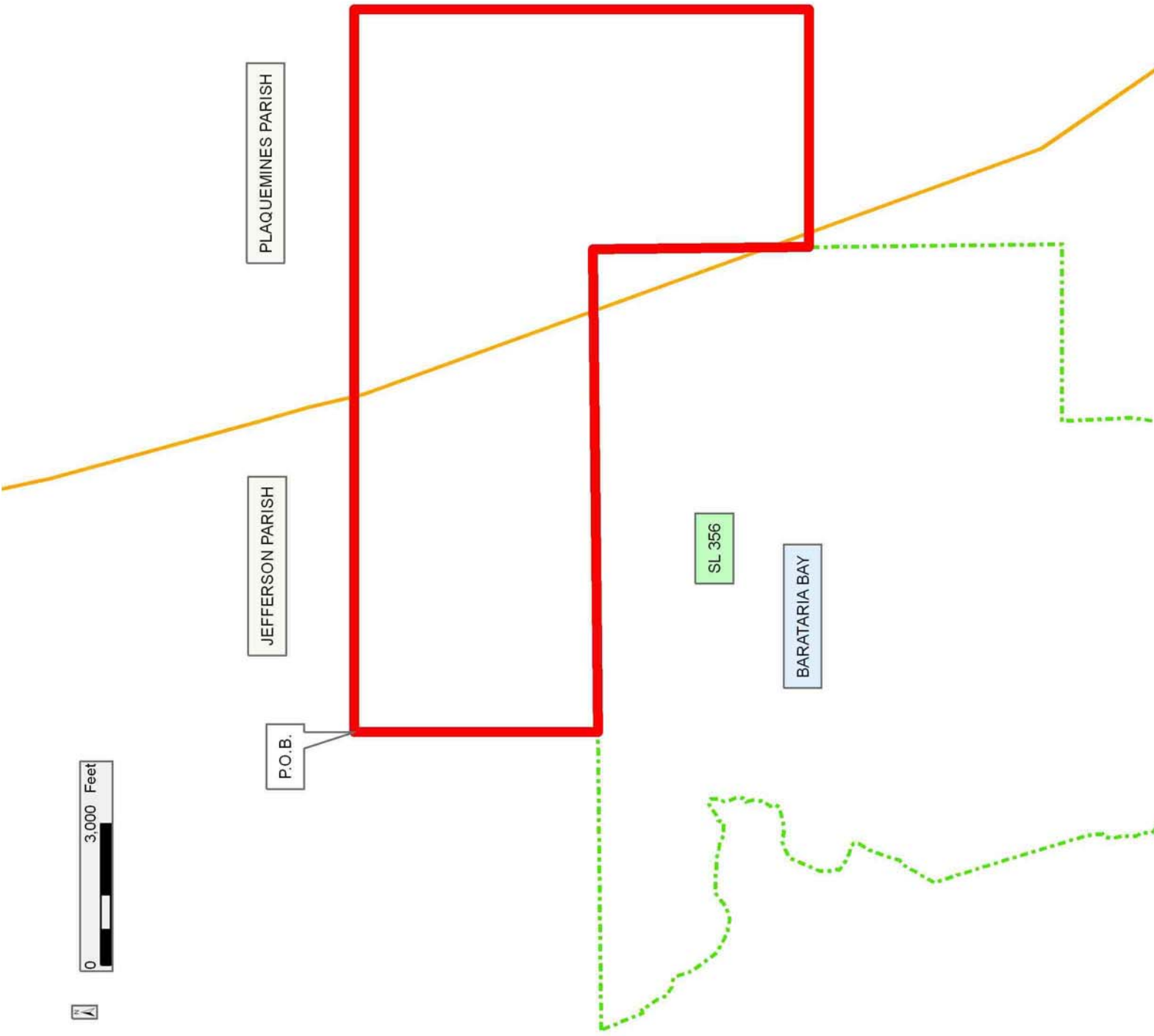
NOTE: The Department of Wildlife and Fisheries has designated certain areas in the coastal waters of the State of Louisiana as Oyster Seed Bed Areas. The exact location of those Seed Bed Areas must be obtained from the Department of Wildlife and Fisheries and any work done under a mineral lease from the State of Louisiana may necessarily be conducted in conformity with the rules and regulations promulgated by the said Department of Wildlife and Fisheries for Oyster Seed Bed Areas.

Applicant: HAROLD J. ANDERSON, INC.

Bidder	Cash Payment	Price/Acre	Rental	Oil	Gas	Other

Legend

- 09/12/2023
- Active_Leases
- Counties



TRACT 41226 - Plaquemines Parish, Louisiana

All of the lands now or formerly constituting the beds and bottoms of all water bodies of every nature and description as to which title is vested in the State of Louisiana, together with all islands arising therein and other lands formed by accretion or by reliction, where allowed by law, excepting tax adjudicated lands, and not presently under mineral lease on December 9, 2009, situated in Plaquemines Parish, Louisiana, and more particularly described as follows: Beginning at a point having Coordinates of X = 2,464,446.00 and Y = 258,410.13; thence South 89 degrees 59 minutes 48 seconds East 10,509.96 feet to a point on the West boundary of State Lease No. 18907 having Coordinates of X = 2,474,955.96 and Y = 258,409.53; thence South 01 degrees 08 minutes 31 seconds East 9,438.13 feet along the West boundary of said State Lease No. 18907 to its Southwest corner having Coordinates of X = 2,475,144.05 and Y = 248,973.28; thence West 10,698.05 feet to a point having Coordinates of X = 2,464,446.00 and Y = 248,973.28; thence North 9,436.85 feet to the point of beginning, containing approximately **2,258 acres**, all as more particularly outlined on a plat on file in the Office of Mineral Resources, Department of Natural Resources. All bearings, distances and coordinates are based on Louisiana Coordinate System of 1927, (North or South Zone), where applicable.

NOTE: The above description of the Tract nominated for lease has been provided and corrected, where required, exclusively by the nomination party. Any mineral lease selected from this Tract and awarded by the Louisiana State Mineral Board shall be without warranty of any kind, either express, implied, or statutory, including, but not limited to, the implied warranties of merchantability and fitness for a particular purpose. Should the mineral lease awarded by the Louisiana State Mineral Board be subsequently modified, cancelled or abrogated due to the existence of conflicting leases, operating agreements, private claims or other future obligations or conditions which may affect all or any portion of the leased Tract, it shall not relieve the Lessee of the obligation to pay any bonus due thereon to the Louisiana State Mineral Board, nor shall the Louisiana State Mineral Board be obligated to refund any consideration paid by the Lessor prior to such modification, cancellation, or abrogation, including, but not limited to, bonuses, rentals and royalties.

NOTE: The State of Louisiana does hereby reserve, and this lease shall be subject to, the imprescriptible right of surface use in the nature of a servitude in favor of the Department of Natural Resources, including its Offices and Commissions, for the sole purpose of implementing, constructing, servicing and maintaining approved coastal zone management and/or restoration projects. Utilization of any and all rights derived under this lease by the mineral lessee, its agents, successors or assigns, shall not interfere with nor hinder the reasonable surface use by the Department of Natural Resources, its Offices or Commissions, as herein above reserved.

NOTE: The Department of Wildlife and Fisheries has designated certain areas in the coastal waters of the State of Louisiana as Oyster Seed Bed Areas. The exact location of those Seed Bed Areas must be obtained from the Department of Wildlife and Fisheries and any work done under a mineral lease from the State of Louisiana may necessarily be conducted in conformity with the rules and regulations promulgated by the said Department of Wildlife and Fisheries for Oyster Seed Bed Areas.

Applicant: HAROLD J. ANDERSON, INC.

Bidder	Cash Payment	Price/Acre	Rental	Oil	Gas	Other

Legend
09120035
Active_Leases
DOQQ2004



SL 18907

PLAQUEMINES PARISH

BARATARIA BAY

P.O.B.



TRACT 41227 - Terrebonne Parish, Louisiana

All of the lands now or formerly constituting the beds and bottoms of all water bodies of every nature and description as to which title is vested in the State of Louisiana, together with all islands arising therein and other lands formed by accretion or by reliction, where allowed by law, excepting tax adjudicated lands, and not presently under mineral lease on December 9, 2009, situated in Terrebonne Parish, Louisiana, and more particularly described as follows: Beginning at a point having Coordinates of X = 2,256,700.00 and Y = 258,294.87; thence East 15,800.00 feet to a point having Coordinates of X = 2,272,500.00 and Y = 258,294.87; thence South 10,000.00 feet to a point having Coordinates of X = 2,272,500.00 and Y = 248,294.87; thence West 15,800.00 feet to a point having Coordinates of X = 2,256,700.00 and Y = 248,294.87; thence North 10,000.00 feet to the point of beginning, containing approximately **1,707 acres**, all as more particularly outlined on a plat on file in the Office of Mineral Resources, Department of Natural Resources. All bearings, distances and coordinates are based on Louisiana Coordinate System of 1927, (North or South Zone), where applicable.

NOTE: The above description of the Tract nominated for lease has been provided and corrected, where required, exclusively by the nomination party. Any mineral lease selected from this Tract and awarded by the Louisiana State Mineral Board shall be without warranty of any kind, either express, implied, or statutory, including, but not limited to, the implied warranties of merchantability and fitness for a particular purpose. Should the mineral lease awarded by the Louisiana State Mineral Board be subsequently modified, cancelled or abrogated due to the existence of conflicting leases, operating agreements, private claims or other future obligations or conditions which may affect all or any portion of the leased Tract, it shall not relieve the Lessee of the obligation to pay any bonus due thereon to the Louisiana State Mineral Board, nor shall the Louisiana State Mineral Board be obligated to refund any consideration paid by the Lessor prior to such modification, cancellation, or abrogation, including, but not limited to, bonuses, rentals and royalties.

NOTE: The State of Louisiana does hereby reserve, and this lease shall be subject to, the imprescriptible right of surface use in the nature of a servitude in favor of the Department of Natural Resources, including its Offices and Commissions, for the sole purpose of implementing, constructing, servicing and maintaining approved coastal zone management and/or restoration projects. Utilization of any and all rights derived under this lease by the mineral lessee, its agents, successors or assigns, shall not interfere with nor hinder the reasonable surface use by the Department of Natural Resources, its Offices or Commissions, as herein above reserved.

Applicant: SPECTER EXPLORATION, INC.

Bidder	Cash Payment	Price/Acre	Rental	Oil	Gas	Other



TRACT 41228 - Plaquemines Parish, Louisiana

All of the lands now or formerly constituting the beds and bottoms of all water bodies of every nature and description as to which title is vested in the State of Louisiana, together with all islands arising therein and other lands formed by accretion or by reliction, where allowed by law, excepting tax adjudicated lands, and not presently under mineral lease on December 9, 2009, situated in Plaquemines Parish, Louisiana, and more particularly described as follows: Beginning at a point having Coordinates of X = 2,449,922.00 and Y = 255,410.13; thence East 14,524.00 feet to a point having Coordinates of X = 2,464,446.00 and Y = 255,410.13; thence South 4,607.96 feet to a point having Coordinates of X = 2,464,446.00 and Y = 250,802.17; thence West 14,524.00 feet to a point having Coordinates of X = 2,449,922.00 and Y = 250,802.17; thence North 4,607.96 feet to the point of beginning, containing approximately **1,535 acres**, all as more particularly outlined on a plat on file in the Office of Mineral Resources, Department of Natural Resources. All bearings, distances and coordinates are based on Louisiana Coordinate System of 1927, (North or South Zone), where applicable.

NOTE: The above description of the Tract nominated for lease has been provided and corrected, where required, exclusively by the nomination party. Any mineral lease selected from this Tract and awarded by the Louisiana State Mineral Board shall be without warranty of any kind, either express, implied, or statutory, including, but not limited to, the implied warranties of merchantability and fitness for a particular purpose. Should the mineral lease awarded by the Louisiana State Mineral Board be subsequently modified, cancelled or abrogated due to the existence of conflicting leases, operating agreements, private claims or other future obligations or conditions which may affect all or any portion of the leased Tract, it shall not relieve the Lessee of the obligation to pay any bonus due thereon to the Louisiana State Mineral Board, nor shall the Louisiana State Mineral Board be obligated to refund any consideration paid by the Lessor prior to such modification, cancellation, or abrogation, including, but not limited to, bonuses, rentals and royalties.

NOTE: The State of Louisiana does hereby reserve, and this lease shall be subject to, the imprescriptible right of surface use in the nature of a servitude in favor of the Department of Natural Resources, including its Offices and Commissions, for the sole purpose of implementing, constructing, servicing and maintaining approved coastal zone management and/or restoration projects. Utilization of any and all rights derived under this lease by the mineral lessee, its agents, successors or assigns, shall not interfere with nor hinder the reasonable surface use by the Department of Natural Resources, its Offices or Commissions, as herein above reserved.

NOTE: The Department of Wildlife and Fisheries has designated certain areas in the coastal waters of the State of Louisiana as Oyster Seed Bed Areas. The exact location of those Seed Bed Areas must be obtained from

the Department of Wildlife and Fisheries and any work done under a mineral lease from the State of Louisiana may necessarily be conducted in conformity with the rules and regulations promulgated by the said Department of Wildlife and Fisheries for Oyster Seed Bed Areas.

Applicant: HAROLD J. ANDERSON, INC.

Bidder	Cash Payment	Price/Acre	Rental	Oil	Gas	Other

PLAQUEMINES PARISH

BARATARIA BAY

P.O.B.



TRACT 41229 - Lafourche and Terrebonne Parishes, Louisiana

All of the lands now or formerly constituting the beds and bottoms of all water bodies of every nature and description as to which title is vested in the State of Louisiana, together with all islands arising therein and other lands formed by accretion or by reliction, where allowed by law, excepting tax adjudicated lands, and not presently under mineral lease on December 9, 2009, situated in Lafourche and Terrebonne Parishes, Louisiana, and more particularly described as follows: Beginning at a point being the Southernmost Southwest corner of State Lease No. 20067 having Coordinates of X = 2,290,500.00 feet and Y = 255,300.00 feet; thence East 5,000.00 feet along the Southern boundary of said State Lease No. 20067 to its Southernmost Southeast corner, also being a point on the Western boundary of State Lease No. 20072 having Coordinates of X = 2,295,500.00 feet and Y = 255,300.00 feet; thence South 1,492.79 feet to the to a point being the Southwest corner of said State Lease No. 20072 having Coordinates of X = 2,295,500.00 feet and Y = 253,807.21 feet; thence East 9,188.36 feet along the Southern boundary of said State Lease No. 20072 to a point having Coordinates of X = 2,304,688.36 feet and Y = 253,807.21 feet; thence South 12,207.21 feet to a point having Coordinates of X = 2,304,688.36 feet and Y = 241,600.00 feet; thence West 14,188.36 feet to a point having Coordinates of X = 2,290,500.00 feet and Y = 241,600.00 feet; thence North 13,700.00 feet to the point of beginning, containing approximately **834 acres**, all as more particularly outlined on a plat on file in the Office of Mineral Resources, Department of Natural Resources. All bearings, distances and coordinates are based on Louisiana Coordinate System of 1927, (North or South Zone), where applicable.

NOTE: The above description of the Tract nominated for lease has been provided and corrected, where required, exclusively by the nomination party. Any mineral lease selected from this Tract and awarded by the Louisiana State Mineral Board shall be without warranty of any kind, either express, implied, or statutory, including, but not limited to, the implied warranties of merchantability and fitness for a particular purpose. Should the mineral lease awarded by the Louisiana State Mineral Board be subsequently modified, cancelled or abrogated due to the existence of conflicting leases, operating agreements, private claims or other future obligations or conditions which may affect all or any portion of the leased Tract, it shall not relieve the Lessee of the obligation to pay any bonus due thereon to the Louisiana State Mineral Board, nor shall the Louisiana State Mineral Board be obligated to refund any consideration paid by the Lessor prior to such modification, cancellation, or abrogation, including, but not limited to, bonuses, rentals and royalties.

NOTE: The State of Louisiana does hereby reserve, and this lease shall be subject to, the imprescriptible right of surface use in the nature of a servitude in favor of the Department of Natural Resources, including its Offices and Commissions, for the sole purpose of implementing, constructing, servicing and maintaining approved coastal zone management and/or restoration projects. Utilization of any and all rights derived

under this lease by the mineral lessee, its agents, successors or assigns, shall not interfere with nor hinder the reasonable surface use by the Department of Natural Resources, its Offices or Commissions, as herein above reserved.

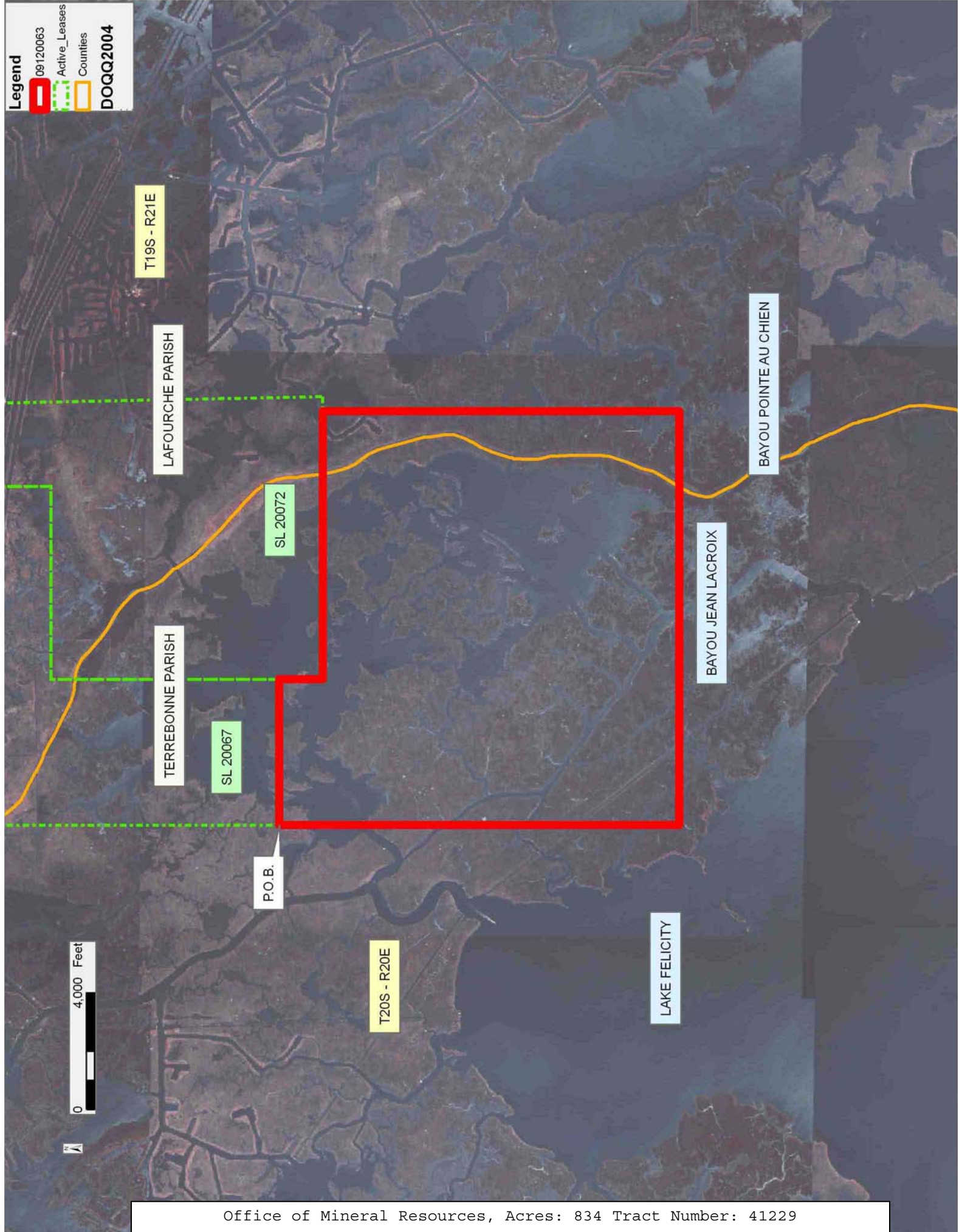
NOTE: The Department of Wildlife and Fisheries has designated certain areas in the coastal waters of the State of Louisiana as Oyster Seed Bed Areas. The exact location of those Seed Bed Areas must be obtained from the Department of Wildlife and Fisheries and any work done under a mineral lease from the State of Louisiana may necessarily be conducted in conformity with the rules and regulations promulgated by the said Department of Wildlife and Fisheries for Oyster Seed Bed Areas.

Applicant: SPECTER EXPLORATION, INC.

Bidder	Cash Payment	Price/Acre	Rental	Oil	Gas	Other

Legend

- 09120063
- Active_Leases
- Counties
- DOQQ2004



TRACT 41230 - Lafourche Parish, Louisiana

All of the lands now or formerly constituting the beds and bottoms of all water bodies of every nature and description as to which title is vested in the State of Louisiana, together with all islands arising therein and other lands formed by accretion or by reliction, where allowed by law, excepting tax adjudicated lands, and not presently under mineral lease on December 9, 2009, situated in Lafourche Parish, Louisiana, and more particularly described as follows: Beginning at a point having Coordinates of X = 2,304,688.36 feet and Y = 253,807.21 feet; thence Easterly approximately 500 feet to a point at the most Southwesterly corner of State Lease No. 378; thence Easterly along the Southern boundary of said State Lease No. 378 approximately 2,653 feet to a point; thence along the Southern boundary of said State Lease No. 378 the following courses: South 00 degrees 49 minutes 33 seconds East 1,165.51 feet to a point having Coordinates of X = 2,307,857.78 and Y = 252,707.31; North 88 degrees 35 minutes 10 seconds East 5,278.52 feet to a point having Coordinates of X = 2,313,134.69 and Y = 252,837.55; South 00 degrees 16 minutes 22 seconds East 1,165.67 feet to a point having Coordinates of X = 2,313,140.24 and Y = 251,671.89; North 88 degrees 35 minutes 11 seconds East 2,620.89 feet to a point having Coordinates of X = 2,315,760.33 and Y = 251,736.55; South 00 degrees 06 minutes 25 seconds East 5,246.34 feet to a point having Coordinates of X = 2,315,750.55 and Y = 246,490.22; North 88 degrees 35 minutes 10 seconds East 4,250.79 feet to a point having Coordinates of X = 2,320,000.00 and Y = 246,595.10; thence South 4,995.10 feet to a point having Coordinates of X = 2,320,000.00 feet and Y = 241,600.00 feet; thence West 4,000.00 feet to a point on the East line of State Lease No. 17316, having Coordinates of X = 2,316,000.00 feet and Y = 241,600.00 feet; thence North 4,350.00 feet to a point at the Northeast corner of said State Lease No. 17316, having Coordinates of X = 2,316,000.00 feet and Y = 245,950.00 feet; thence West 6,700.00 feet to a point at the Northwest corner of said State Lease No. 17316, having Coordinates of X = 2,309,300.00 feet and Y = 245,950.00 feet; thence South 4,350.00 feet to a point on the West line of said State Lease No. 17316, having Coordinates of X = 2,309,300.00 feet and Y = 241,600.00 feet; thence West 4,611.64 feet to a point having Coordinates of X = 2,304,688.36 feet and Y = 241,600.00 feet; thence North 12,207.21 feet to the point of beginning, containing approximately **886 acres**, all as more particularly outlined on a plat on file in the Office of Mineral Resources, Department of Natural Resources. All bearings, distances and coordinates are based on Louisiana Coordinate System of 1927, (North or South Zone), where applicable.

NOTE: The above description of the Tract nominated for lease has been provided and corrected, where required, exclusively by the nomination party. Any mineral lease selected from this Tract and awarded by the Louisiana State Mineral Board shall be without warranty of any kind, either express, implied, or statutory, including, but not limited to, the implied warranties of merchantability and fitness for a particular purpose. Should the mineral lease awarded by the Louisiana State Mineral Board be subsequently modified, cancelled or abrogated due to the

existence of conflicting leases, operating agreements, private claims or other future obligations or conditions which may affect all or any portion of the leased Tract, it shall not relieve the Lessee of the obligation to pay any bonus due thereon to the Louisiana State Mineral Board, nor shall the Louisiana State Mineral Board be obligated to refund any consideration paid by the Lessor prior to such modification, cancellation, or abrogation, including, but not limited to, bonuses, rentals and royalties.

NOTE: The State of Louisiana does hereby reserve, and this lease shall be subject to, the imprescriptible right of surface use in the nature of a servitude in favor of the Department of Natural Resources, including its Offices and Commissions, for the sole purpose of implementing, constructing, servicing and maintaining approved coastal zone management and/or restoration projects. Utilization of any and all rights derived under this lease by the mineral lessee, its agents, successors or assigns, shall not interfere with nor hinder the reasonable surface use by the Department of Natural Resources, its Offices or Commissions, as herein above reserved.

NOTE: The Department of Wildlife and Fisheries has designated certain areas in the coastal waters of the State of Louisiana as Oyster Seed Bed Areas. The exact location of those Seed Bed Areas must be obtained from the Department of Wildlife and Fisheries and any work done under a mineral lease from the State of Louisiana may necessarily be conducted in conformity with the rules and regulations promulgated by the said Department of Wildlife and Fisheries for Oyster Seed Bed Areas.

Applicant: SPECTER EXPLORATION, INC.

Bidder	Cash Payment	Price/Acre	Rental	Oil	Gas	Other

Legend

- 09120064
- Active_Leases
- DOQQ2004

