

TRACT 41211 - Plaquemines Parish, Louisiana

All of the lands now or formerly constituting the beds and bottoms of all water bodies of every nature and description as to which title is vested in the State of Louisiana, together with all islands arising therein and other lands formed by accretion or by reliction, where allowed by law, excepting tax adjudicated lands, and not presently under mineral lease on December 9, 2009, situated in Plaquemines Parish, Louisiana, and more particularly described as follows: Beginning at the Southeast corner of State Lease No. 18669, also being the Southwest corner of State Lease No. 18668 having Coordinates of X = 2,448,100.00 and Y = 278,322.38; thence South 89 degrees 48 minutes 43 seconds East 2,626.27 feet along the South boundary of said State Lease No. 18668 to the Westernmost corner of State Lease No. 18688 having Coordinates of X = 2,450,726.26 and Y = 278,313.76; thence South 72 degrees 21 minutes 20 seconds East 3,311.53 feet along the South boundary of said State Lease No. 18688 to a point having Coordinates of X = 2,453,882.00 and Y = 277,310.00; thence South 5,982.11 feet to a point having Coordinates of X = 2,453,882.00 and Y = 271,327.89; thence North 89 degrees 57 minutes 07 seconds West 8,579.89 feet to a point having Coordinates of X = 2,445,302.11 and Y = 271,335.07; thence North 2,125.00 feet to the Southeast corner of State Lease No. 3035, as amended, having Coordinates of X = 2,445,302.11 and Y = 273,460.07; thence along the boundary of said State Lease No. 3035 the following courses: North 30 degrees 28 minutes 03 seconds East 301.60 feet; North 20 degrees 28 minutes 03 seconds East 757.80 feet; North 14 degrees 25 minutes 15 seconds East 361.40 feet; North 08 degrees 30 minutes 16 seconds East 541.00 feet; North 00 degrees 52 minutes 53 seconds East 325.00 feet; North 11 degrees 01 minutes 46 seconds West 601.10 feet; North 23 degrees 22 minutes 27 seconds West 642.80 feet; North 29 degrees 58 minutes 54 seconds West 450.30 feet; North 36 degrees 28 minutes 09 seconds West 429.00 feet; North 46 degrees 50 minutes 51 seconds West 329.00 feet; South 42 degrees 21 minutes 27 seconds West 690.20 feet; North 44 degrees 39 minutes 25 seconds West 590.40 feet; North 53 degrees 26 minutes 25 seconds West 554.00 feet; North 63 degrees 26 minutes 06 seconds West 246.00 feet; North 73 degrees 04 minutes 21 seconds West 480.80 feet and North 57 degrees 15 minutes 53 seconds West 33.55 feet to the point of intersection with the South boundary of said State Lease No. 18669 having Coordinates of X = 2,442,771.77 and Y = 278,288.19; thence North 89 degrees 37 minutes 56 seconds East 5,328.34 feet along the South boundary of said State Lease No. 18669 to the point of beginning, containing approximately **1,337.74 acres**, all as more particularly outlined on a plat on file in the Office of Mineral Resources, Department of Natural Resources. All bearings, distances and coordinates are based on Louisiana Coordinate System of 1927, (North or South Zone), where applicable.

NOTE: The above description of the Tract nominated for lease has been provided and corrected, where required, exclusively by the nomination party. Any mineral lease selected from this Tract and awarded by the Louisiana State Mineral Board shall be without warranty of any kind, either express, implied, or statutory, including, but not limited to, the

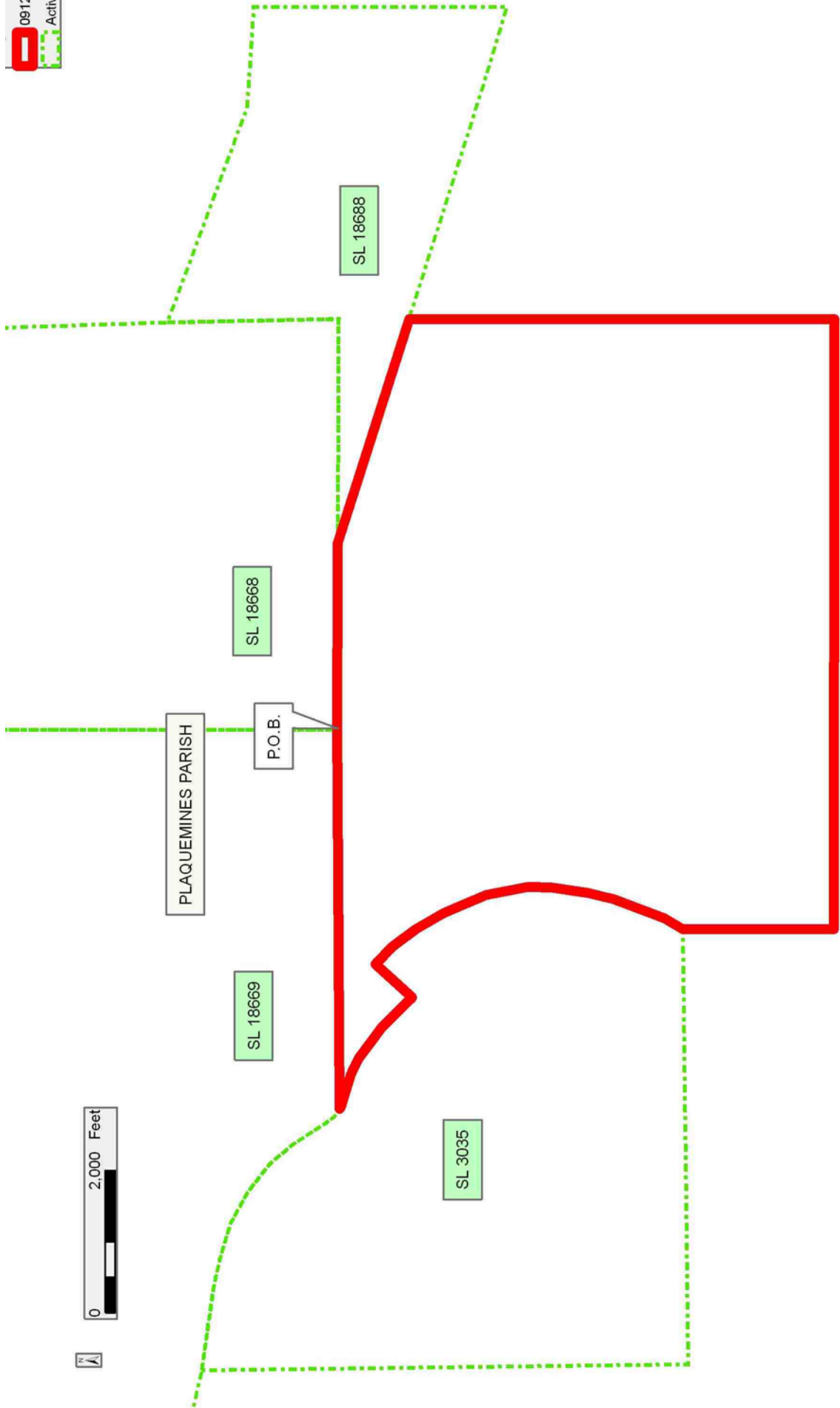
implied warranties of merchantability and fitness for a particular purpose. Should the mineral lease awarded by the Louisiana State Mineral Board be subsequently modified, cancelled or abrogated due to the existence of conflicting leases, operating agreements, private claims or other future obligations or conditions which may affect all or any portion of the leased Tract, it shall not relieve the Lessee of the obligation to pay any bonus due thereon to the Louisiana State Mineral Board, nor shall the Louisiana State Mineral Board be obligated to refund any consideration paid by the Lessor prior to such modification, cancellation, or abrogation, including, but not limited to, bonuses, rentals and royalties.

NOTE: The State of Louisiana does hereby reserve, and this lease shall be subject to, the imprescriptible right of surface use in the nature of a servitude in favor of the Department of Natural Resources, including its Offices and Commissions, for the sole purpose of implementing, constructing, servicing and maintaining approved coastal zone management and/or restoration projects. Utilization of any and all rights derived under this lease by the mineral lessee, its agents, successors or assigns, shall not interfere with nor hinder the reasonable surface use by the Department of Natural Resources, its Offices or Commissions, as herein above reserved.

NOTE: The Department of Wildlife and Fisheries has designated certain areas in the coastal waters of the State of Louisiana as Oyster Seed Bed Areas. The exact location of those Seed Bed Areas must be obtained from the Department of Wildlife and Fisheries and any work done under a mineral lease from the State of Louisiana may necessarily be conducted in conformity with the rules and regulations promulgated by the said Department of Wildlife and Fisheries for Oyster Seed Bed Areas.

Applicant: HAROLD J. ANDERSON, INC.

| Bidder | Cash Payment | Price/Acre | Rental | Oil | Gas | Other |
|--------|--------------|------------|--------|-----|-----|-------|
| | | | | | | |
| | | | | | | |
| | | | | | | |
| | | | | | | |



TRACT 41212 - Plaquemines Parish, Louisiana

All of the lands now or formerly constituting the beds and bottoms of all water bodies of every nature and description as to which title is vested in the State of Louisiana, together with all islands arising therein and other lands formed by accretion or by reliction, where allowed by law, excepting tax adjudicated lands, and not presently under mineral lease on December 9, 2009, situated in Plaquemines Parish, Louisiana, and more particularly described as follows: Beginning at the Southeast corner of State Lease No. 18688, also being the Southwest corner of State Lease No. 18671, as amended, having Coordinates of X = 2,458,270.00 and Y = 275,935.28; thence South 73 degrees 10 minutes 42 seconds East 6,452.09 feet along the South boundary of said State Lease No. 18671 to its Southernmost Southeast corner, also being a point on the West boundary of State Lease No. 18148 having Coordinates of X = 2,464,446.00 and Y = 274,068.07; thence South 2,740.18 feet along the West boundary of said State Lease No. 18148 to a point having Coordinates of X = 2,464,446.00 and Y = 271,327.89; thence West 10,564.00 feet to a point having Coordinates of X = 2,453,882.00 and Y = 271,327.89; thence North 5,982.11 feet to a point on the South boundary of State Lease No. 18688 having Coordinates of X = 2,453,882.00 and Y = 277,310.00; thence along the Southern boundary of said State Lease No. 18688 the following courses: South 72 degrees 21 minutes 20 seconds East 3,440.31 feet to a point having Coordinates of X = 2,457,160.46 and Y = 276,267.20 and South 73 degrees 20 minutes 42 seconds East 1,158.12 feet to the point of beginning, containing approximately **1,053.45 acres**, all as more particularly outlined on a plat on file in the Office of Mineral Resources, Department of Natural Resources. All bearings, distances and coordinates are based on Louisiana Coordinate System of 1927, (North or South Zone), where applicable.

NOTE: The above description of the Tract nominated for lease has been provided and corrected, where required, exclusively by the nomination party. Any mineral lease selected from this Tract and awarded by the Louisiana State Mineral Board shall be without warranty of any kind, either express, implied, or statutory, including, but not limited to, the implied warranties of merchantability and fitness for a particular purpose. Should the mineral lease awarded by the Louisiana State Mineral Board be subsequently modified, cancelled or abrogated due to the existence of conflicting leases, operating agreements, private claims or other future obligations or conditions which may affect all or any portion of the leased Tract, it shall not relieve the Lessee of the obligation to pay any bonus due thereon to the Louisiana State Mineral Board, nor shall the Louisiana State Mineral Board be obligated to refund any consideration paid by the Lessor prior to such modification, cancellation, or abrogation, including, but not limited to, bonuses, rentals and royalties.

NOTE: The State of Louisiana does hereby reserve, and this lease shall be subject to, the imprescriptible right of surface use in the nature of a servitude in favor of the Department of Natural Resources, including its

Offices and Commissions, for the sole purpose of implementing, constructing, servicing and maintaining approved coastal zone management and/or restoration projects. Utilization of any and all rights derived under this lease by the mineral lessee, its agents, successors or assigns, shall not interfere with nor hinder the reasonable surface use by the Department of Natural Resources, its Offices or Commissions, as herein above reserved.

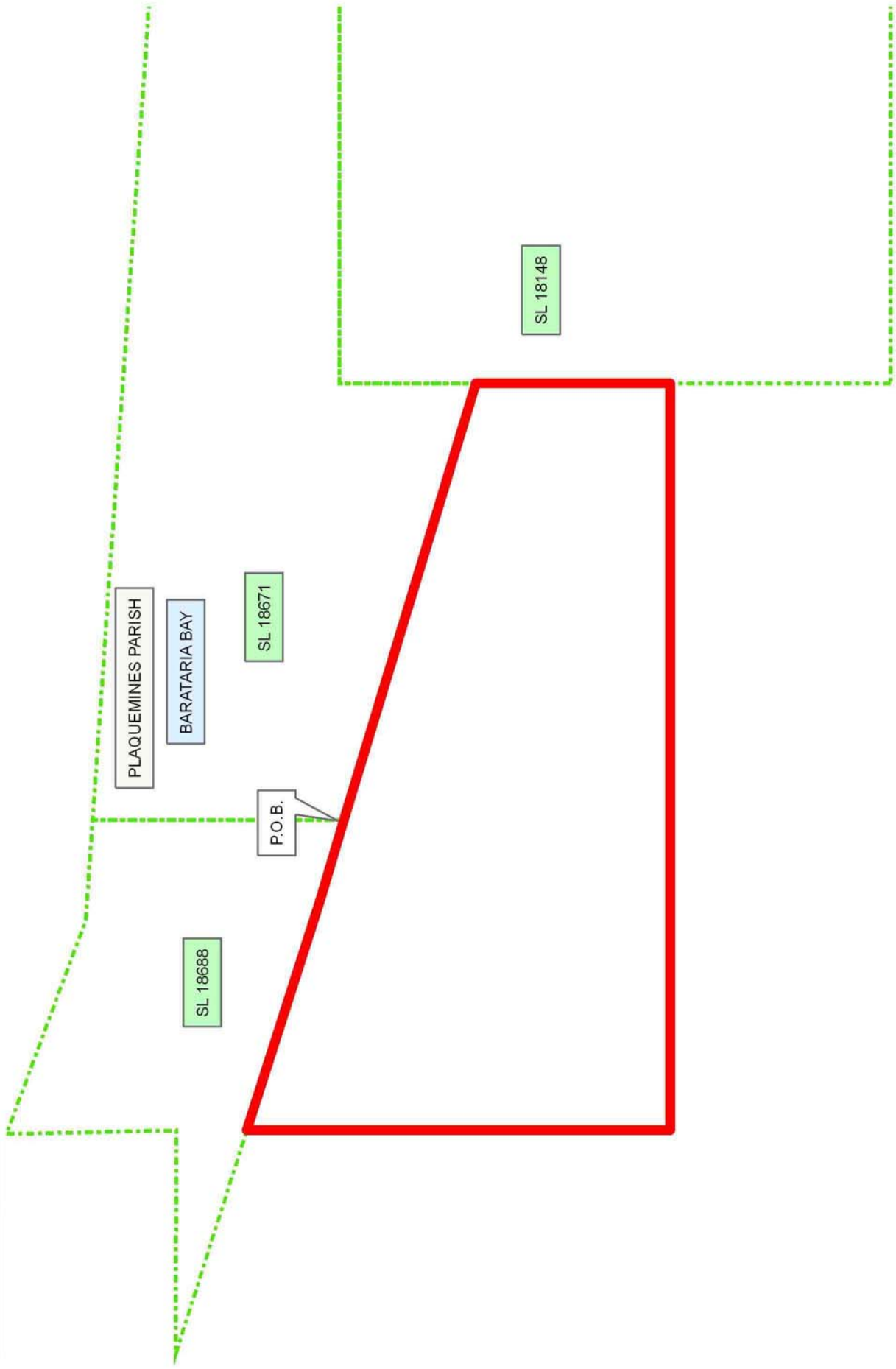
NOTE: The Department of Wildlife and Fisheries has designated certain areas in the coastal waters of the State of Louisiana as Oyster Seed Bed Areas. The exact location of those Seed Bed Areas must be obtained from the Department of Wildlife and Fisheries and any work done under a mineral lease from the State of Louisiana may necessarily be conducted in conformity with the rules and regulations promulgated by the said Department of Wildlife and Fisheries for Oyster Seed Bed Areas.

Applicant: HAROLD J. ANDERSON, INC.

| Bidder | Cash Payment | Price/Acre | Rental | Oil | Gas | Other |
|--------|--------------|------------|--------|-----|-----|-------|
| | | | | | | |
| | | | | | | |
| | | | | | | |
| | | | | | | |

Legend

- 09/12/20029
- Active_Leases



TRACT 41213 - Terrebonne Parish, Louisiana

All of the lands now or formerly constituting the beds and bottoms of all water bodies of every nature and description as to which title is vested in the State of Louisiana, together with all islands arising therein and other lands formed by accretion or by reliction, where allowed by law, excepting tax adjudicated lands, and not presently under mineral lease on December 9, 2009, situated in Terrebonne Parish, Louisiana, and more particularly described as follows: Point of Beginning having Coordinates of X = 2,261,000.00 feet and Y = 263,294.87 feet; thence North approximately 15,760 feet to a point on the Southern boundary of the Pointe Aux Chenes State Wildlife Management Area; thence along the Southern boundary of said Pointe Aux Chenes State Wildlife Management Area Easterly, Southeasterly, Northeasterly, and Easterly approximately 26,282 feet to a point of intersection with the West line of State Lease No. 19703; thence South 01 Degree 44 Minutes 15 Seconds East approximately 4,039 feet to the Southwest corner of said State Lease No. 19703, also being a point on the North line of State Lease No. 18223, as amended, having Coordinates of X = 2,278,013.55 feet and Y = 274,040.55 feet; thence along the North line of said State Lease No. 18223, as amended, South 88 Degrees 34 Minutes 18 Seconds West 3,323.28 feet to the Northwest corner of said State Lease No. 18223, as amended, having Coordinates of X = 2,274,691.30 feet and Y = 273,957.71 feet; thence West 1,691.30 feet to a point having Coordinates of X = 2,273,000.00 feet and Y = 273,957.71 feet; thence South 4,900.56 feet to a point having Coordinates of X = 2,273,000.00 feet and Y = 269,057.15 feet; thence West 500.00 feet to a point having Coordinates of X = 2,272,500.00 feet and Y = 269,057.15 feet; thence South 5,762.28 feet to a point having Coordinates of X = 2,272,500.00 feet and Y = 263,294.87 feet; thence West 966.47 feet to a point at the Northeast corner of State Lease No. 18871, Parcel A, as amended, having Coordinates of X = 2,271,533.53 feet and Y = 263,294.87 feet; thence West along the North line of said State Lease No. 18871, Parcel A, as amended, 3,745.00 feet to the Northwest corner of said State Lease No. 18871, Parcel A, as amended, having Coordinates of X = 2,267,788.53 feet and Y = 263,294.88 feet; thence West 6,788.53 feet to the point of beginning, containing approximately **14 acres**, all as more particularly outlined on a plat on file in the Office of Mineral Resources, Department of Natural Resources. All bearings, distances and coordinates are based on Louisiana Coordinate System of 1927, (North or South Zone), where applicable.

NOTE: The above description of the Tract nominated for lease has been provided and corrected, where required, exclusively by the nomination party. Any mineral lease selected from this Tract and awarded by the Louisiana State Mineral Board shall be without warranty of any kind, either express, implied, or statutory, including, but not limited to, the implied warranties of merchantability and fitness for a particular purpose. Should the mineral lease awarded by the Louisiana State Mineral Board be subsequently modified, cancelled or abrogated due to the existence of conflicting leases, operating agreements, private claims or

other future obligations or conditions which may affect all or any portion of the leased Tract, it shall not relieve the Lessee of the obligation to pay any bonus due thereon to the Louisiana State Mineral Board, nor shall the Louisiana State Mineral Board be obligated to refund any consideration paid by the Lessor prior to such modification, cancellation, or abrogation, including, but not limited to, bonuses, rentals and royalties.

NOTE: The State of Louisiana does hereby reserve, and this lease shall be subject to, the imprescriptible right of surface use in the nature of a servitude in favor of the Department of Natural Resources, including its Offices and Commissions, for the sole purpose of implementing, constructing, servicing and maintaining approved coastal zone management and/or restoration projects. Utilization of any and all rights derived under this lease by the mineral lessee, its agents, successors or assigns, shall not interfere with nor hinder the reasonable surface use by the Department of Natural Resources, its Offices or Commissions, as herein above reserved.

Applicant: SPECTER EXPLORATION, INC.

| Bidder | Cash Payment | Price/Acre | Rental | Oil | Gas | Other |
|--------|--------------|------------|--------|-----|-----|-------|
| | | | | | | |
| | | | | | | |
| | | | | | | |
| | | | | | | |

Legend

09120056

Wildlife

Active_Leases

DOQQ2004

0 4,000 Feet

TERREBONNE PARISH

T19S - R19E

POINTE AUX CHENES WMA

SL 19703

SL 18223

P.O.B.

SL 18871

BAYOU ST JEAN CHARLES

TRACT 41214 - Lafourche and Terrebonne Parishes, Louisiana

All of the lands now or formerly constituting the beds and bottoms of all water bodies of every nature and description as to which title is vested in the State of Louisiana, together with all islands arising therein and other lands formed by accretion or by reliction, where allowed by law, excepting tax adjudicated lands, and not presently under mineral lease on December 9, 2009, situated in Lafourche and Terrebonne Parishes, Louisiana, and more particularly described as follows: Beginning at a point having Coordinates of X = 2,288,894.00 feet and Y = 269,057.15 feet; thence West 15,894.00 feet to a point having Coordinates of X = 2,273,000.00 feet and Y = 269,057.15 feet; thence North 4,900.56 feet to a point having Coordinates of X = 2,273,000.00 feet and Y = 273,957.71 feet; thence East 1,691.30 feet to the Northwest corner of State Lease No. 18223 having Coordinates of X = 2,274,691.30 feet and Y = 273,957.71 feet; thence along the boundary of said State Lease No. 18223 the following courses: South 01 Degrees 49 Minutes 13 Seconds East 3,374.49 feet to a point having Coordinates of X = 2,274,798.49 feet and Y = 270,584.92 feet, North 88 Degrees 36 Minutes 49 Seconds East 4,266.35 feet to a point having Coordinates of X = 2,279,063.59 feet and Y = 270,688.15 feet, North 3,378.58 feet to a common corner of State Lease Nos. 18223, 19703 and 19705 having Coordinates of X = 2,279,063.59 feet and Y = 274,066.73 feet; thence along the South boundary of State Lease No. 19705 the following courses: North 88 degrees 34 Minutes 18 Seconds East 4,259.50 feet to a point having Coordinates of X = 2,283,321.77 feet and Y = 274,172.91 feet, North 00 Degrees 29 Minutes 10 Seconds East 2,698.73 feet to a point having Coordinates of X = 2,283,344.67 feet and Y = 276,871.54 feet, North 88 Degrees 35 Minutes 21 Seconds East 5,213.28 feet to the Southeast corner of State Lease No. 19705 having Coordinates of X = 2,288,556.37 feet and Y = 276,999.89 feet; thence South 3,699.89 feet to a point having Coordinates of X = 2,288,556.37 feet and Y = 273,300.00 feet; thence East 337.63 feet to a point being the Northwest corner of State Lease 20067 having Coordinates of X = 2,288,894.00 feet and Y = 273,300.00 feet; thence South 4,242.85 feet along the Western boundary of said State Lease 20067 to the point of beginning, containing approximately **40 acres**, all as more particularly outlined on a plat on file in the Office of Mineral Resources, Department of Natural Resources. All bearings, distances and coordinates are based on Louisiana Coordinate System of 1927, (North or South Zone), where applicable.

NOTE: The above description of the Tract nominated for lease has been provided and corrected, where required, exclusively by the nomination party. Any mineral lease selected from this Tract and awarded by the Louisiana State Mineral Board shall be without warranty of any kind, either express, implied, or statutory, including, but not limited to, the implied warranties of merchantability and fitness for a particular purpose. Should the mineral lease awarded by the Louisiana State Mineral Board be subsequently modified, cancelled or abrogated due to the existence of conflicting leases, operating agreements, private claims or other future obligations or conditions which may affect all or any portion

of the leased Tract, it shall not relieve the Lessee of the obligation to pay any bonus due thereon to the Louisiana State Mineral Board, nor shall the Louisiana State Mineral Board be obligated to refund any consideration paid by the Lessor prior to such modification, cancellation, or abrogation, including, but not limited to, bonuses, rentals and royalties.

NOTE: The State of Louisiana does hereby reserve, and this lease shall be subject to, the imprescriptible right of surface use in the nature of a servitude in favor of the Department of Natural Resources, including its Offices and Commissions, for the sole purpose of implementing, constructing, servicing and maintaining approved coastal zone management and/or restoration projects. Utilization of any and all rights derived under this lease by the mineral lessee, its agents, successors or assigns, shall not interfere with nor hinder the reasonable surface use by the Department of Natural Resources, its Offices or Commissions, as herein above reserved.

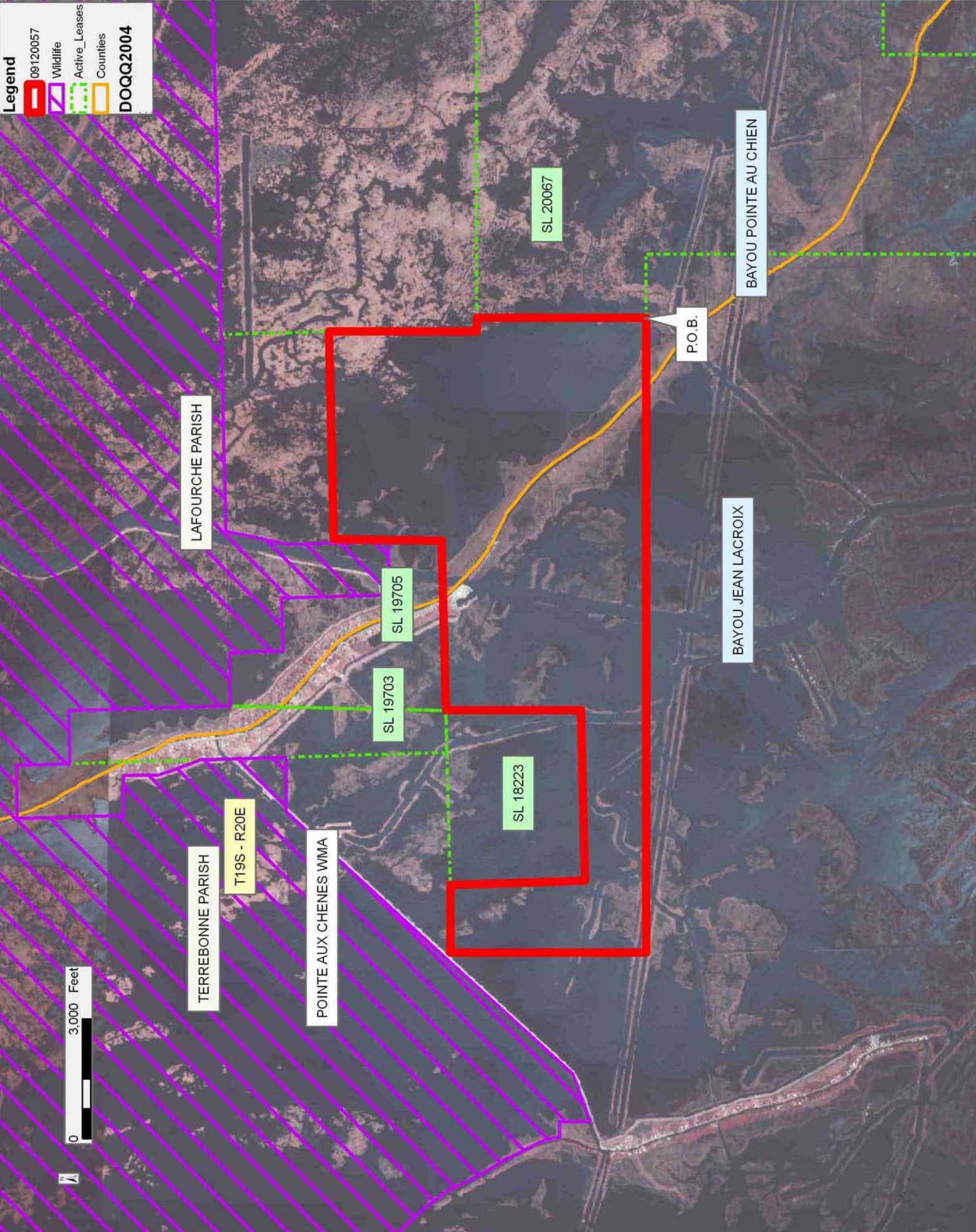
Applicant: SPECTER EXPLORATION, INC.

| Bidder | Cash Payment | Price/Acre | Rental | Oil | Gas | Other |
|--------|--------------|------------|--------|-----|-----|-------|
| | | | | | | |
| | | | | | | |
| | | | | | | |
| | | | | | | |

Legend

-  09120057
-  Wildlife
-  Active_Leases
-  Counties

DOQQ2004



TRACT 41215 - Jefferson and Plaquemines Parishes, Louisiana

All of the lands now or formerly constituting the beds and bottoms of all water bodies of every nature and description as to which title is vested in the State of Louisiana, together with all islands arising therein and other lands formed by accretion or by reliction, where allowed by law, excepting tax adjudicated lands, and not presently under mineral lease on December 9, 2009, situated in Jefferson and Plaquemines Parishes, Louisiana, and more particularly described as follows: Beginning at the Northeast corner of State Lease No. 19673, also being a point on the South boundary of State Lease No. 3035, as amended, having Coordinates of X = 2,443,952.55 and Y = 273,443.60; thence North 89 degrees 18 minutes 03 seconds East 1,349.66 feet along South boundary of said State Lease No. 3035 to its Southeast corner having Coordinates of X = 2,445,302.11 and Y = 273,460.07; thence South 2,125.00 feet to a point having Coordinates of X = 2,445,302.11 and Y = 271,335.07; thence South 89 degrees 57 minutes 07 seconds East 8,579.89 feet to a point having Coordinates of X = 2,453,882.00 and Y = 271,327.89; thence South 3,567.76 feet to a point having Coordinates of X = 2,453,882.00 and Y = 267,760.13; thence West 7,862.45 feet to the Northeast corner of State Lease No. 20070 having Coordinates of X = 2,446,019.55 and Y = 267,760.13; thence West 2,067.00 feet along the North boundary of said State Lease No. 20070 to the Southeast corner of said State Lease No. 19673 having Coordinates of X = 2,443,952.55 and Y = 267,760.13; thence North 5,683.47 feet along the East boundary of said State Lease No. 19673 to the point of beginning, containing approximately **879.78 acres**, all as more particularly outlined on a plat on file in the Office of Mineral Resources, Department of Natural Resources. All bearings, distances and coordinates are based on Louisiana Coordinate System of 1927, (North or South Zone), where applicable.

NOTE: The above description of the Tract nominated for lease has been provided and corrected, where required, exclusively by the nomination party. Any mineral lease selected from this Tract and awarded by the Louisiana State Mineral Board shall be without warranty of any kind, either express, implied, or statutory, including, but not limited to, the implied warranties of merchantability and fitness for a particular purpose. Should the mineral lease awarded by the Louisiana State Mineral Board be subsequently modified, cancelled or abrogated due to the existence of conflicting leases, operating agreements, private claims or other future obligations or conditions which may affect all or any portion of the leased Tract, it shall not relieve the Lessee of the obligation to pay any bonus due thereon to the Louisiana State Mineral Board, nor shall the Louisiana State Mineral Board be obligated to refund any consideration paid by the Lessor prior to such modification, cancellation, or abrogation, including, but not limited to, bonuses, rentals and royalties.

NOTE: The State of Louisiana does hereby reserve, and this lease shall be subject to, the imprescriptible right of surface use in the nature of a servitude in favor of the Department of Natural Resources, including its

Offices and Commissions, for the sole purpose of implementing, constructing, servicing and maintaining approved coastal zone management and/or restoration projects. Utilization of any and all rights derived under this lease by the mineral lessee, its agents, successors or assigns, shall not interfere with nor hinder the reasonable surface use by the Department of Natural Resources, its Offices or Commissions, as herein above reserved.

NOTE: The Department of Wildlife and Fisheries has designated certain areas in the coastal waters of the State of Louisiana as Oyster Seed Bed Areas. The exact location of those Seed Bed Areas must be obtained from the Department of Wildlife and Fisheries and any work done under a mineral lease from the State of Louisiana may necessarily be conducted in conformity with the rules and regulations promulgated by the said Department of Wildlife and Fisheries for Oyster Seed Bed Areas.

Applicant: HAROLD J. ANDERSON, INC.

| Bidder | Cash Payment | Price/Acre | Rental | Oil | Gas | Other |
|--------|--------------|------------|--------|-----|-----|-------|
| | | | | | | |
| | | | | | | |
| | | | | | | |
| | | | | | | |

Legend

09120037

Active_Leases

DOQQ2004

PLAQUEMINES PARISH

BARATARIA BAY

P.O.B.

SL 3035

SL 19673

SL 20070

0 2,000 Feet



TRACT 41216 - Plaquemines Parish, Louisiana

All of the lands now or formerly constituting the beds and bottoms of all water bodies of every nature and description as to which title is vested in the State of Louisiana, together with all islands arising therein and other lands formed by accretion or by reliction, where allowed by law, excepting tax adjudicated lands, and not presently under mineral lease on December 9, 2009, situated in Plaquemines Parish, Louisiana, and more particularly described as follows: Beginning at a point having Coordinates of X = 2,453,882.00 and Y = 271,327.89; thence East 10,564.00 feet to a point on the West boundary of State Lease No. 18148 having Coordinates of X = 2,464,446.00 and Y = 271,327.89; thence South 3,125.56 feet along the West boundary of said State Lease No. 18148 to its Southwest corner having Coordinates of X = 2,464,446.00 and Y = 268,202.33; thence South 5,342.20 feet to a point having Coordinates of X = 2,464,446.00 and Y = 262,860.13; thence West 14,524.00 feet to a point having Coordinates of X = 2,449,922.00 and Y = 262,860.13; thence North 4,900.00 feet to a point having Coordinates of X = 2,449,922.00 and Y = 267,760.13; thence East 3,960.00 feet to a point having Coordinates of X = 2,453,882.00 and Y = 267,760.13; thence North 3,567.76 feet to the point of beginning, containing approximately **2,499.02 acres**, all as more particularly outlined on a plat on file in the Office of Mineral Resources, Department of Natural Resources. All bearings, distances and coordinates are based on Louisiana Coordinate System of 1927, (North or South Zone), where applicable.

NOTE: The above description of the Tract nominated for lease has been provided and corrected, where required, exclusively by the nomination party. Any mineral lease selected from this Tract and awarded by the Louisiana State Mineral Board shall be without warranty of any kind, either express, implied, or statutory, including, but not limited to, the implied warranties of merchantability and fitness for a particular purpose. Should the mineral lease awarded by the Louisiana State Mineral Board be subsequently modified, cancelled or abrogated due to the existence of conflicting leases, operating agreements, private claims or other future obligations or conditions which may affect all or any portion of the leased Tract, it shall not relieve the Lessee of the obligation to pay any bonus due thereon to the Louisiana State Mineral Board, nor shall the Louisiana State Mineral Board be obligated to refund any consideration paid by the Lessor prior to such modification, cancellation, or abrogation, including, but not limited to, bonuses, rentals and royalties.

NOTE: The State of Louisiana does hereby reserve, and this lease shall be subject to, the imprescriptible right of surface use in the nature of a servitude in favor of the Department of Natural Resources, including its Offices and Commissions, for the sole purpose of implementing, constructing, servicing and maintaining approved coastal zone management and/or restoration projects. Utilization of any and all rights derived under this lease by the mineral lessee, its agents, successors or assigns, shall not interfere with nor hinder the reasonable surface use by the

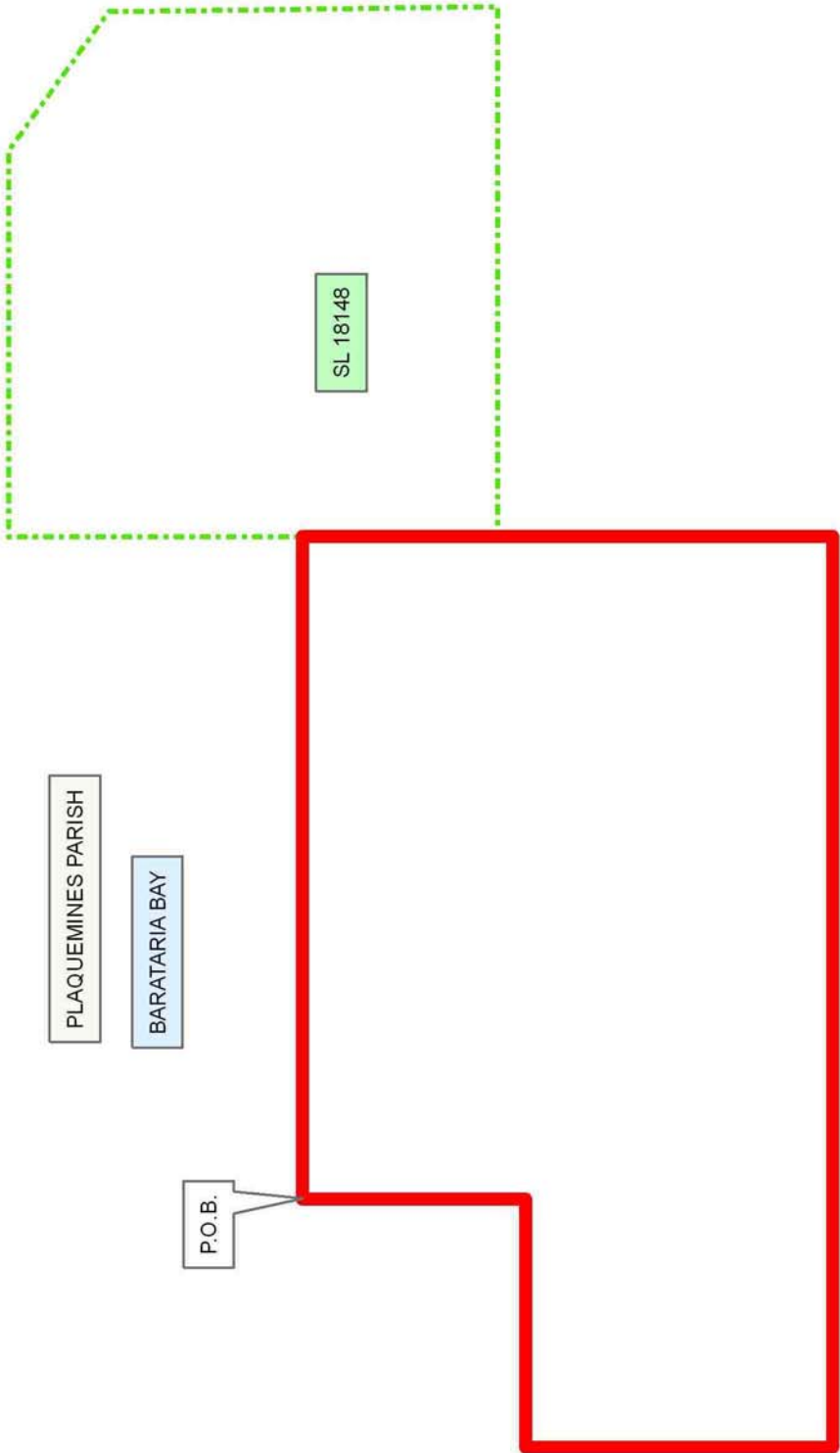
Department of Natural Resources, its Offices or Commissions, as herein above reserved.

NOTE: The Department of Wildlife and Fisheries has designated certain areas in the coastal waters of the State of Louisiana as Oyster Seed Bed Areas. The exact location of those Seed Bed Areas must be obtained from the Department of Wildlife and Fisheries and any work done under a mineral lease from the State of Louisiana may necessarily be conducted in conformity with the rules and regulations promulgated by the said Department of Wildlife and Fisheries for Oyster Seed Bed Areas.

Applicant: HAROLD J. ANDERSON, INC.

| Bidder | Cash Payment | Price/Acre | Rental | Oil | Gas | Other |
|--------|--------------|------------|--------|-----|-----|-------|
| | | | | | | |
| | | | | | | |
| | | | | | | |
| | | | | | | |

Legend
09/12/20027
Active_Leases



TRACT 41217 - Jefferson Parish, Louisiana

All of the lands now or formerly constituting the beds and bottoms of all water bodies of every nature and description as to which title is vested in the State of Louisiana, together with all islands arising therein and other lands formed by accretion or by reliction, where allowed by law, excepting tax adjudicated lands, and not presently under mineral lease on December 9, 2009, situated in Jefferson Parish, Louisiana, and more particularly described as follows: Beginning at the Northwest corner of State Lease No. 20066 having Coordinates of X = 2,429,022.83 and Y = 271,804.63; thence along the boundary of said State Lease No. 20066 the following courses: South 4,186.63 feet to its Southwest corner having Coordinates of X = 2,429,022.83 and Y = 267,618.00 and East 2,105.00 feet to its Southeast corner, also being a point on the Westernmost boundary of State Lease No. 20068 having Coordinates of X = 2,431,127.83 and Y = 267,618.00; thence along the said boundary of State Lease No. 20068 the following courses: South 476.81 feet; East 1,555.86 feet; South 545.00 feet; East 2,373.00 feet and South 824.00 feet to its Southernmost Southwest corner having Coordinates of X = 2,435,056.69 and Y = 265,772.19; thence South 5,312.06 feet to a point having Coordinates of X = 2,435,056.69 and Y = 260,460.13; thence West 500.00 feet to a point having Coordinates of X = 2,434,556.69 and Y = 260,460.13; thence South 5,176.87 feet to a point on the North boundary of a portion of State Lease No. 356, as amended, having Coordinates of X = 2,434,556.69 and Y = 255,283.26; thence South 89 degrees 21 minutes 40 seconds West approximately 6,326 feet along the North boundary of a portion of said State Lease No. 356 to its Northwest corner; thence West approximately 1,142 feet to a point on the East boundary of State Lease No. 1217, as amended; thence along the boundary of said State Lease No. 1217 the following: Northerly approximately 13,780 feet; West approximately 2,500 feet and North approximately 2,812 feet to a point of intersection with an East-West line having a Coordinate of Y = 271,804.63; thence East approximately 4,434 feet along said line to the point of beginning, **LESS AND EXCEPT** that portion, if any, of State Lease No. 356, as amended, and State Lease No. 1217, as amended, which may lie within the above described tract, containing approximately **2,457 acres**, all as more particularly outlined on a plat on file in the Office of Mineral Resources, Department of Natural Resources. All bearings, distances and coordinates are based on Louisiana Coordinate System of 1927, (North or South Zone), where applicable.

NOTE: The above description of the Tract nominated for lease has been provided and corrected, where required, exclusively by the nomination party. Any mineral lease selected from this Tract and awarded by the Louisiana State Mineral Board shall be without warranty of any kind, either express, implied, or statutory, including, but not limited to, the implied warranties of merchantability and fitness for a particular purpose. Should the mineral lease awarded by the Louisiana State Mineral Board be subsequently modified, cancelled or abrogated due to the existence of conflicting leases, operating agreements, private claims or

other future obligations or conditions which may affect all or any portion of the leased Tract, it shall not relieve the Lessee of the obligation to pay any bonus due thereon to the Louisiana State Mineral Board, nor shall the Louisiana State Mineral Board be obligated to refund any consideration paid by the Lessor prior to such modification, cancellation, or abrogation, including, but not limited to, bonuses, rentals and royalties.

NOTE: The State of Louisiana does hereby reserve, and this lease shall be subject to, the imprescriptible right of surface use in the nature of a servitude in favor of the Department of Natural Resources, including its Offices and Commissions, for the sole purpose of implementing, constructing, servicing and maintaining approved coastal zone management and/or restoration projects. Utilization of any and all rights derived under this lease by the mineral lessee, its agents, successors or assigns, shall not interfere with nor hinder the reasonable surface use by the Department of Natural Resources, its Offices or Commissions, as herein above reserved.

NOTE: The Department of Wildlife and Fisheries has designated certain areas in the coastal waters of the State of Louisiana as Oyster Seed Bed Areas. The exact location of those Seed Bed Areas must be obtained from the Department of Wildlife and Fisheries and any work done under a mineral lease from the State of Louisiana may necessarily be conducted in conformity with the rules and regulations promulgated by the said Department of Wildlife and Fisheries for Oyster Seed Bed Areas.

Applicant: HAROLD J. ANDERSON, INC.

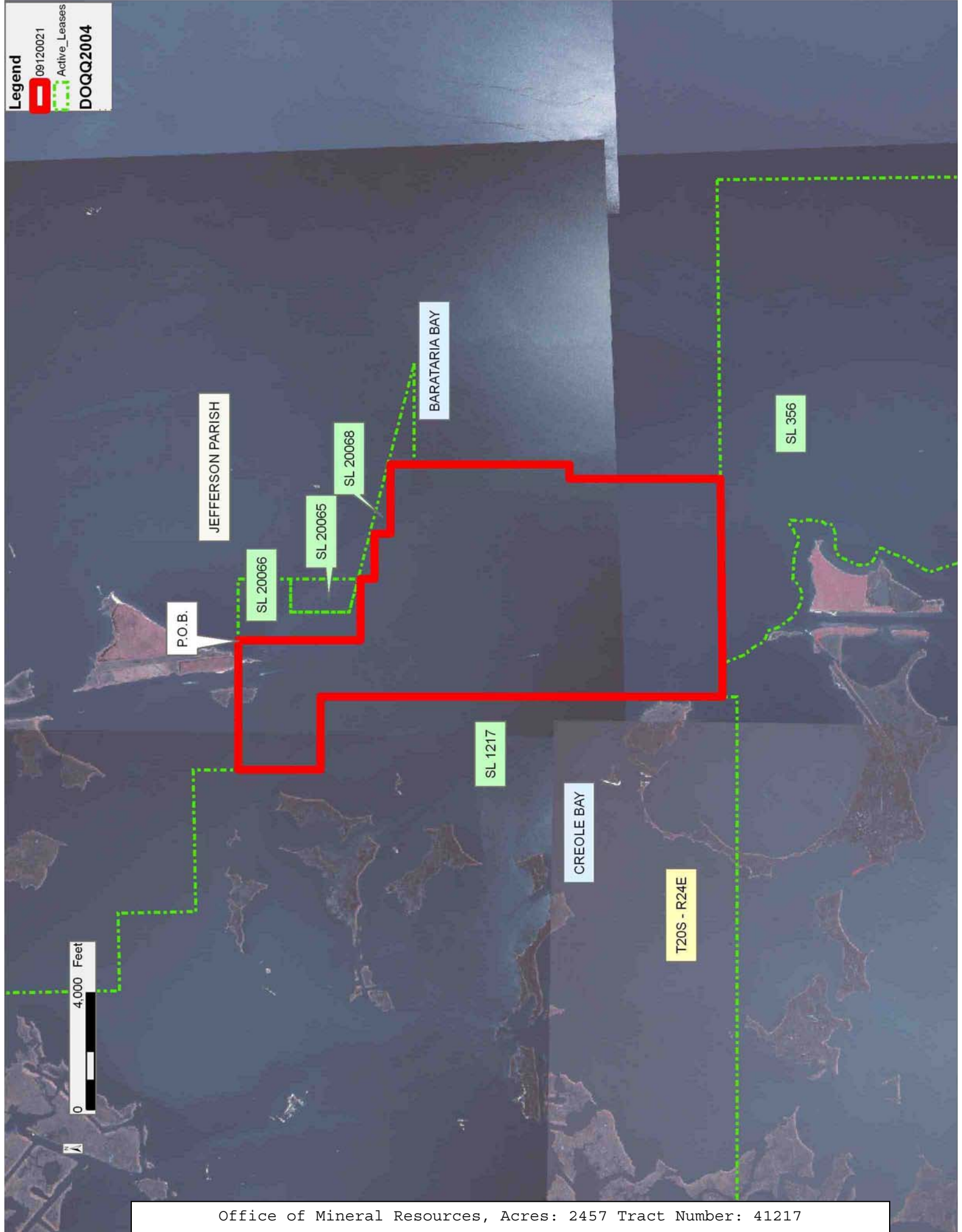
| Bidder | Cash Payment | Price/Acre | Rental | Oil | Gas | Other |
|--------|--------------|------------|--------|-----|-----|-------|
| | | | | | | |
| | | | | | | |
| | | | | | | |
| | | | | | | |

Legend

09/12/20021

Active_Leases

DOQQ2004



TRACT 41218 - Plaquemines Parish, Louisiana

All of the lands now or formerly constituting the beds and bottoms of all water bodies of every nature and description as to which title is vested in the State of Louisiana, together with all islands arising therein and other lands formed by accretion or by reliction, where allowed by law, excepting tax adjudicated lands, and not presently under mineral lease on December 9, 2009, situated in Plaquemines Parish, Louisiana, and more particularly described as follows: Beginning at the Southwest corner of State Lease No. 18148 having Coordinates of X = 2,464,446.00 and Y = 268,202.33; thence East approximately 8,458 feet along the South boundary of said State Lease No. 18148 to its Southeast corner, also being the Westernmost Southwest corner of State Lease No. 2028, as amended; thence Easterly along the Southern boundary of said State Lease No. 2028 approximately 1,920 feet to the Northwest corner of State Lease No. 18907 having Coordinates of X = 2,474,823.70 and Y = 268,227.46; thence South 00 degrees 16 minutes 31 seconds East 1,208.37 feet along the West boundary of said State Lease No. 18907 to the Southernmost Northwest corner of State Lease No. 2104 having Coordinates of X = 2,474,829.51 and Y = 267,019.11; thence South 00 degrees 45 minutes 00 seconds East 6,600.00 feet along the West boundaries of said State Lease No. 18907 and said State Lease No. 2104 to the Southwest corner of said State Lease No. 2104 having Coordinates of X = 2,474,915.90 and Y = 260,419.67; thence South 01 degrees 08 minutes 32 seconds East 2,010.54 feet along the West boundary of said State Lease No. 18907 to a point having Coordinates of X = 2,474,955.96 and Y = 258,409.53; thence North 89 degrees 59 minutes 48 seconds West 10,509.96 feet to a point having Coordinates of X = 2,464,446.00 and Y = 258,410.13; thence North 9,792.20 feet to the point of beginning, **LESS AND EXCEPT** that portion, if any, of State Lease No. 2028, as amended, and State Lease No. 2104 which may lie within the above described tract, containing approximately **2,345 acres**, all as more particularly outlined on a plat on file in the Office of Mineral Resources, Department of Natural Resources. All bearings, distances and coordinates are based on Louisiana Coordinate System of 1927, (North or South Zone), where applicable.

NOTE: The above description of the Tract nominated for lease has been provided and corrected, where required, exclusively by the nomination party. Any mineral lease selected from this Tract and awarded by the Louisiana State Mineral Board shall be without warranty of any kind, either express, implied, or statutory, including, but not limited to, the implied warranties of merchantability and fitness for a particular purpose. Should the mineral lease awarded by the Louisiana State Mineral Board be subsequently modified, cancelled or abrogated due to the existence of conflicting leases, operating agreements, private claims or other future obligations or conditions which may affect all or any portion of the leased Tract, it shall not relieve the Lessee of the obligation to pay any bonus due thereon to the Louisiana State Mineral Board, nor shall the Louisiana State Mineral Board be obligated to refund any consideration

paid by the Lessor prior to such modification, cancellation, or abrogation, including, but not limited to, bonuses, rentals and royalties.

NOTE: The State of Louisiana does hereby reserve, and this lease shall be subject to, the imprescriptible right of surface use in the nature of a servitude in favor of the Department of Natural Resources, including its Offices and Commissions, for the sole purpose of implementing, constructing, servicing and maintaining approved coastal zone management and/or restoration projects. Utilization of any and all rights derived under this lease by the mineral lessee, its agents, successors or assigns, shall not interfere with nor hinder the reasonable surface use by the Department of Natural Resources, its Offices or Commissions, as herein above reserved.

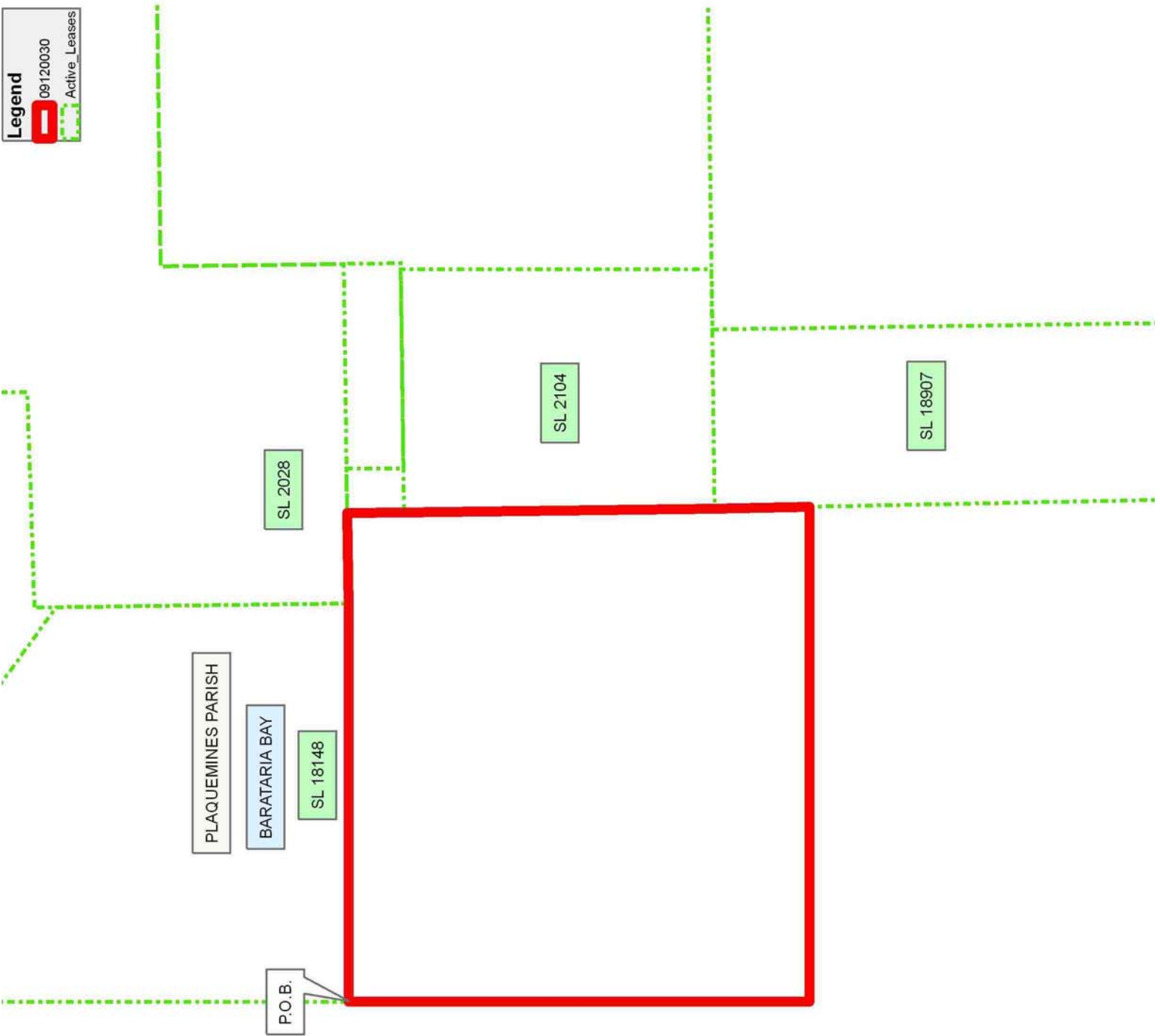
NOTE: The Department of Wildlife and Fisheries has designated certain areas in the coastal waters of the State of Louisiana as Oyster Seed Bed Areas. The exact location of those Seed Bed Areas must be obtained from the Department of Wildlife and Fisheries and any work done under a mineral lease from the State of Louisiana may necessarily be conducted in conformity with the rules and regulations promulgated by the said Department of Wildlife and Fisheries for Oyster Seed Bed Areas.

Applicant: HAROLD J. ANDERSON, INC.

| Bidder | Cash Payment | Price/Acre | Rental | Oil | Gas | Other |
|--------|--------------|------------|--------|-----|-----|-------|
| | | | | | | |
| | | | | | | |
| | | | | | | |
| | | | | | | |

Legend

09/12/20030
Active_Leases



TRACT 41219 - Jefferson and Plaquemines Parishes, Louisiana

All of the lands now or formerly constituting the beds and bottoms of all water bodies of every nature and description as to which title is vested in the State of Louisiana, together with all islands arising therein and other lands formed by accretion or by reliction, where allowed by law, excepting tax adjudicated lands, and not presently under mineral lease on December 9, 2009, situated in Jefferson and Plaquemines Parishes, Louisiana, and more particularly described as follows: Beginning at the Northeast corner of State Lease No. 20070 having Coordinates of X = 2,446,019.55 and Y = 267,760.13; thence East 3,902.45 feet to a point having Coordinates of X = 2,449,922.00 and Y = 267,760.13; thence South 7,300.00 feet to a point having Coordinates of X = 2,449,922.00 and Y = 260,460.13; thence West 14,865.31 feet to a point having Coordinates of X = 2,435,056.69 and Y = 260,460.13; thence North 5,312.06 feet to the Southernmost Southwest corner of State Lease No. 20068 having Coordinates of X = 2,435,056.69 and Y = 265,772.19; thence East 3,470.00 feet along the South boundary of said State Lease No. 20068 to its Easternmost corner, also being a point on the Southern boundary of State Lease No. 20069 having Coordinates of X = 2,438,526.69 and Y = 265,772.19; thence South 75 degrees 21 minutes 09 seconds East 677.89 feet along the Southern boundary of said State Lease No. 20069 to its Southeast corner, also being the Westernmost Northwest corner of said State Lease No. 20070 having Coordinates of X = 2,439,182.55 and Y = 265,600.77; thence along the boundary of said State Lease No. 20070 the following courses: South 488.64 feet to its Southwest corner having Coordinates of X = 2,439,182.55 and Y = 265,112.13; East 6,837.00 feet to its Southeast corner having Coordinates of X = 2,446,019.55 and Y = 265,112.13 and North 2,648.00 feet to the point of beginning, containing approximately **1,886.00 acres**, all as more particularly outlined on a plat on file in the Office of Mineral Resources, Department of Natural Resources. All bearings, distances and coordinates are based on Louisiana Coordinate System of 1927, (North or South Zone), where applicable.

NOTE: The above description of the Tract nominated for lease has been provided and corrected, where required, exclusively by the nomination party. Any mineral lease selected from this Tract and awarded by the Louisiana State Mineral Board shall be without warranty of any kind, either express, implied, or statutory, including, but not limited to, the implied warranties of merchantability and fitness for a particular purpose. Should the mineral lease awarded by the Louisiana State Mineral Board be subsequently modified, cancelled or abrogated due to the existence of conflicting leases, operating agreements, private claims or other future obligations or conditions which may affect all or any portion of the leased Tract, it shall not relieve the Lessee of the obligation to pay any bonus due thereon to the Louisiana State Mineral Board, nor shall the Louisiana State Mineral Board be obligated to refund any consideration paid by the Lessor prior to such modification, cancellation, or abrogation, including, but not limited to, bonuses, rentals and royalties.

NOTE: The State of Louisiana does hereby reserve, and this lease shall be subject to, the imprescriptible right of surface use in the nature of a servitude in favor of the Department of Natural Resources, including its Offices and Commissions, for the sole purpose of implementing, constructing, servicing and maintaining approved coastal zone management and/or restoration projects. Utilization of any and all rights derived under this lease by the mineral lessee, its agents, successors or assigns, shall not interfere with nor hinder the reasonable surface use by the Department of Natural Resources, its Offices or Commissions, as herein above reserved.

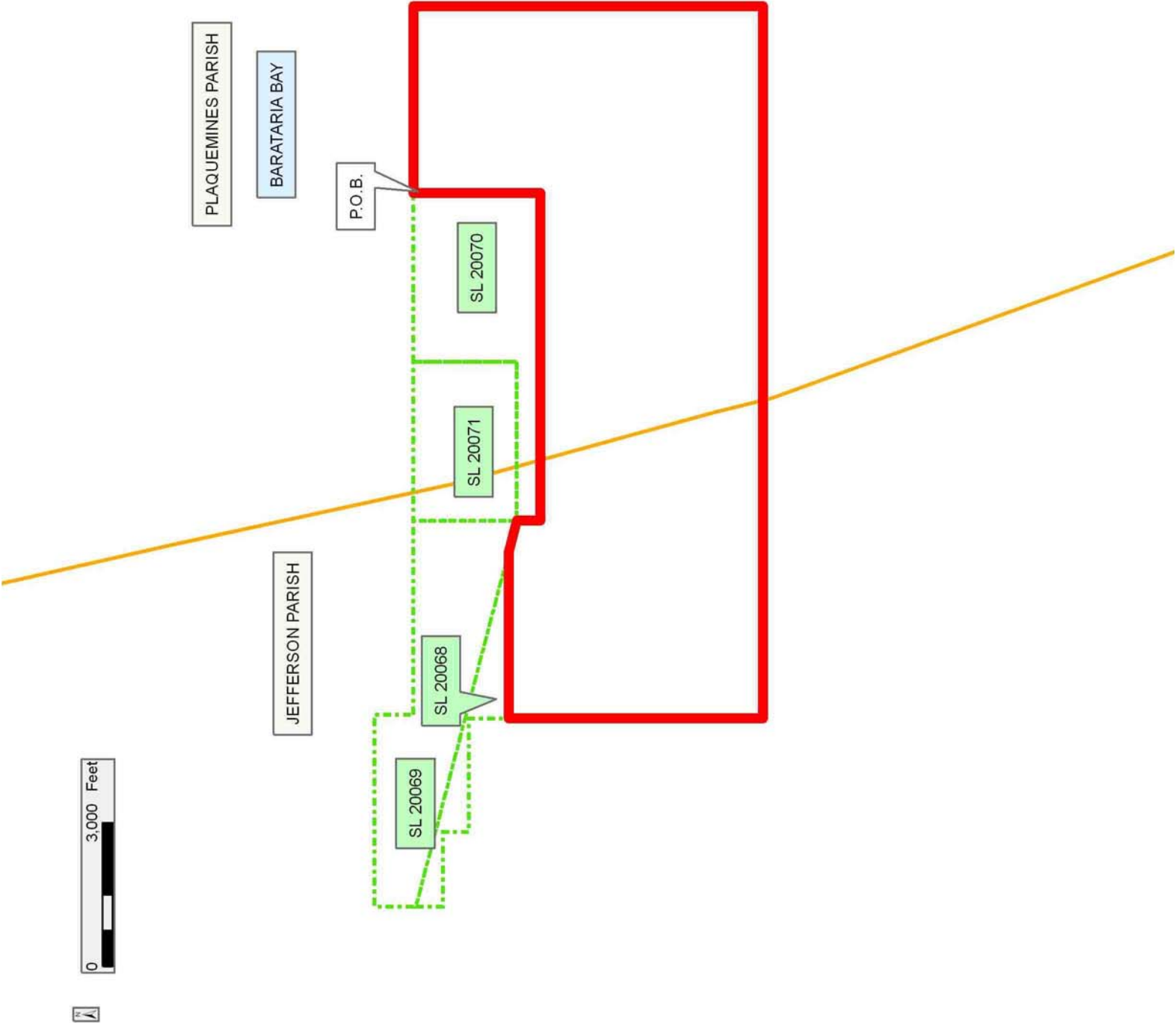
NOTE: The Department of Wildlife and Fisheries has designated certain areas in the coastal waters of the State of Louisiana as Oyster Seed Bed Areas. The exact location of those Seed Bed Areas must be obtained from the Department of Wildlife and Fisheries and any work done under a mineral lease from the State of Louisiana may necessarily be conducted in conformity with the rules and regulations promulgated by the said Department of Wildlife and Fisheries for Oyster Seed Bed Areas.

Applicant: HAROLD J. ANDERSON, INC.

| Bidder | Cash Payment | Price/Acre | Rental | Oil | Gas | Other |
|--------|--------------|------------|--------|-----|-----|-------|
| | | | | | | |
| | | | | | | |
| | | | | | | |
| | | | | | | |

Legend

- 09/12/2003
- Active_Leases
- Counties



TRACT 41220 - Lafourche and Terrebonne Parishes, Louisiana

All of the lands now or formerly constituting the beds and bottoms of all water bodies of every nature and description as to which title is vested in the State of Louisiana, together with all islands arising therein and other lands formed by accretion or by reliction, where allowed by law, excepting tax adjudicated lands, and not presently under mineral lease on December 9, 2009, situated in Lafourche and Terrebonne Parishes, Louisiana, and more particularly described as follows: Beginning at a point having Coordinates of X = 2,272,500.00 feet and Y = 269,057.15 feet; thence East 16,394.00 feet to a point being the Westernmost Southwest corner of State Lease No. 20067 having Coordinates of X = 2,288,894.00 feet and Y = 269,057.15 feet; thence East 1,606.00 feet along the boundary of said State Lease No. 20067 to a point having Coordinates of X = 2,290,500.00 feet and Y = 269,057.15 feet; thence South 13,757.15 feet along the boundary of said State Lease No. 20067 to a point being its Southernmost Southwest corner having Coordinates of X = 2,290,500.00 feet and Y = 255,300.00 feet; thence South 1,700.00 feet to a point having Coordinates of X = 2,290,500.00 feet and Y = 253,600.00 feet; thence West 18,000.00 feet to a point having Coordinates of X = 2,272,500.00 feet and Y = 253,600.00 feet; thence North 15,457.15 feet to the point of beginning, containing approximately **320 acres**, all as more particularly outlined on a plat on file in the Office of Mineral Resources, Department of Natural Resources. All bearings, distances and coordinates are based on Louisiana Coordinate System of 1927, (North or South Zone), where applicable.

NOTE: The above description of the Tract nominated for lease has been provided and corrected, where required, exclusively by the nomination party. Any mineral lease selected from this Tract and awarded by the Louisiana State Mineral Board shall be without warranty of any kind, either express, implied, or statutory, including, but not limited to, the implied warranties of merchantability and fitness for a particular purpose. Should the mineral lease awarded by the Louisiana State Mineral Board be subsequently modified, cancelled or abrogated due to the existence of conflicting leases, operating agreements, private claims or other future obligations or conditions which may affect all or any portion of the leased Tract, it shall not relieve the Lessee of the obligation to pay any bonus due thereon to the Louisiana State Mineral Board, nor shall the Louisiana State Mineral Board be obligated to refund any consideration paid by the Lessor prior to such modification, cancellation, or abrogation, including, but not limited to, bonuses, rentals and royalties.

NOTE: The State of Louisiana does hereby reserve, and this lease shall be subject to, the imprescriptible right of surface use in the nature of a servitude in favor of the Department of Natural Resources, including its Offices and Commissions, for the sole purpose of implementing, constructing, servicing and maintaining approved coastal zone management and/or restoration projects. Utilization of any and all rights derived under this lease by the mineral lessee, its agents, successors or assigns,

shall not interfere with nor hinder the reasonable surface use by the Department of Natural Resources, its Offices or Commissions, as herein above reserved.

NOTE: The Department of Wildlife and Fisheries has designated certain areas in the coastal waters of the State of Louisiana as Oyster Seed Bed Areas. The exact location of those Seed Bed Areas must be obtained from the Department of Wildlife and Fisheries and any work done under a mineral lease from the State of Louisiana may necessarily be conducted in conformity with the rules and regulations promulgated by the said Department of Wildlife and Fisheries for Oyster Seed Bed Areas.

Applicant: SPECTER EXPLORATION, INC.

| Bidder | Cash Payment | Price/Acre | Rental | Oil | Gas | Other |
|--------|--------------|------------|--------|-----|-----|-------|
| | | | | | | |
| | | | | | | |
| | | | | | | |
| | | | | | | |

Legend

- 09120059
- Active_Leases
- Counties

DOQQ2004

