

TRACT 41201 - Calcasieu and Jefferson Davis Parishes, Louisiana

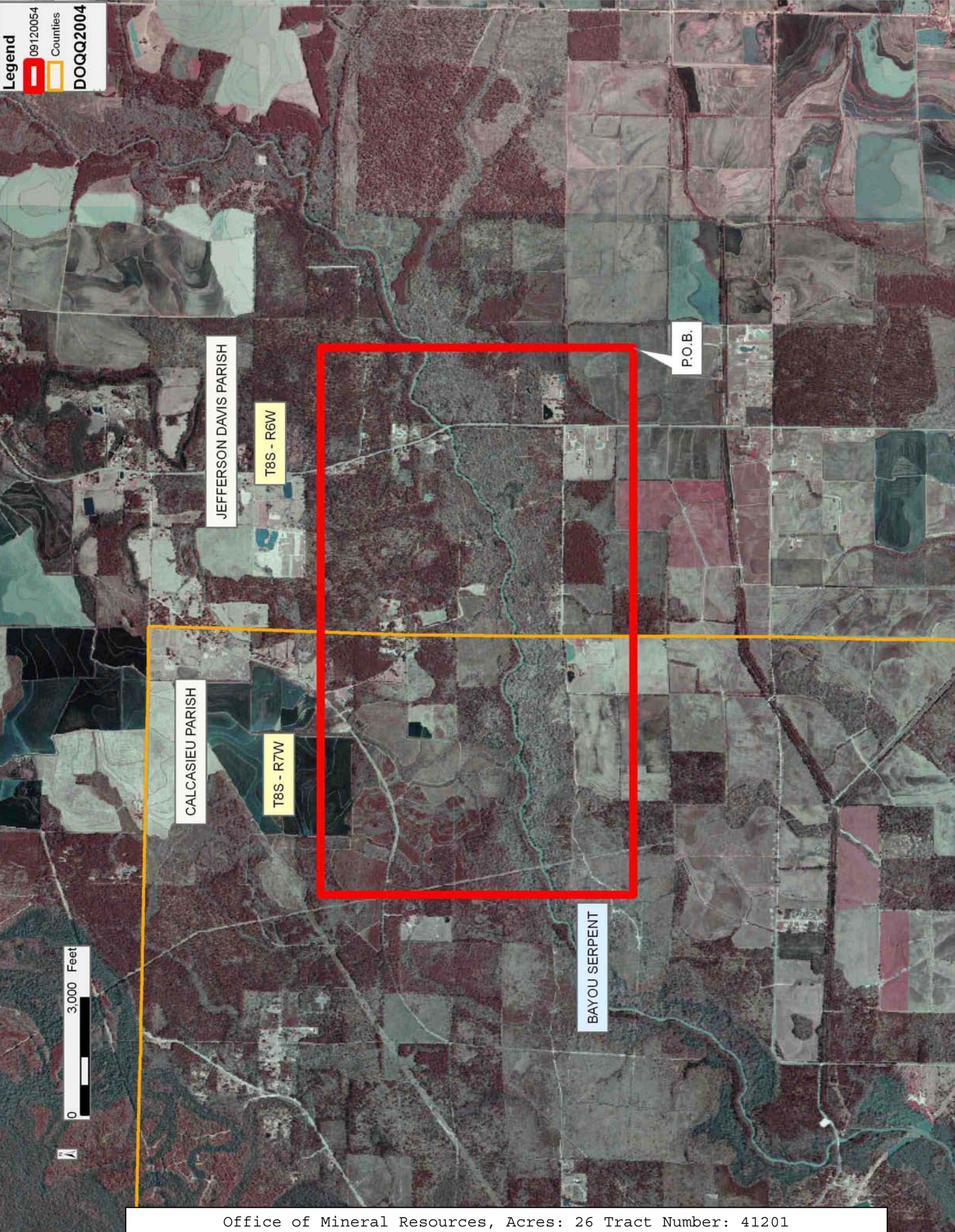
All of the lands now or formerly constituting the beds and bottoms of all water bodies of every nature and description as to which title is vested in the State of Louisiana, together with all islands arising therein and other lands formed by accretion or by reliction, where allowed by law, excepting tax adjudicated lands, and not presently under mineral lease on December 9, 2009, situated in Calcasieu and Jefferson Davis Parishes, Louisiana, and more particularly described as follows: Beginning at a point having Coordinates of X = 1,471,900.00 and Y = 614,300.00; thence West 14,000.00 feet to a point having Coordinates of X = 1,457,900.00 and Y = 614,300.00; thence North 8,000.00 feet to a point having Coordinates of X = 1,457,900.00 and Y = 622,300.00; thence East 14,000.00 feet to a point having Coordinates of X = 1,471,900.00 and Y = 622,300.00; thence South 8,000.00 feet to the point of beginning containing **26 acres**, all as more particularly outlined on a plat on file in the Office of Mineral Resources, Department of Natural Resources. All bearings, distances and coordinates are based on Louisiana Coordinate System of 1927, (North or South Zone), where applicable.

NOTE: The above description of the Tract nominated for lease has been provided and corrected, where required, exclusively by the nomination party. Any mineral lease selected from this Tract and awarded by the Louisiana State Mineral Board shall be without warranty of any kind, either express, implied, or statutory, including, but not limited to, the implied warranties of merchantability and fitness for a particular purpose. Should the mineral lease awarded by the Louisiana State Mineral Board be subsequently modified, cancelled or abrogated due to the existence of conflicting leases, operating agreements, private claims or other future obligations or conditions which may affect all or any portion of the leased Tract, it shall not relieve the Lessee of the obligation to pay any bonus due thereon to the Louisiana State Mineral Board, nor shall the Louisiana State Mineral Board be obligated to refund any consideration paid by the Lessor prior to such modification, cancellation, or abrogation, including, but not limited to, bonuses, rentals and royalties.

Applicant: WAINWRIGHT & BOYER LAND SERVICES, L.L.C.

Bidder	Cash Payment	Price/Acre	Rental	Oil	Gas	Other

Legend
09120054
Counties
DOQQ2004



TRACT 41202 - Calcasieu Parish, Louisiana

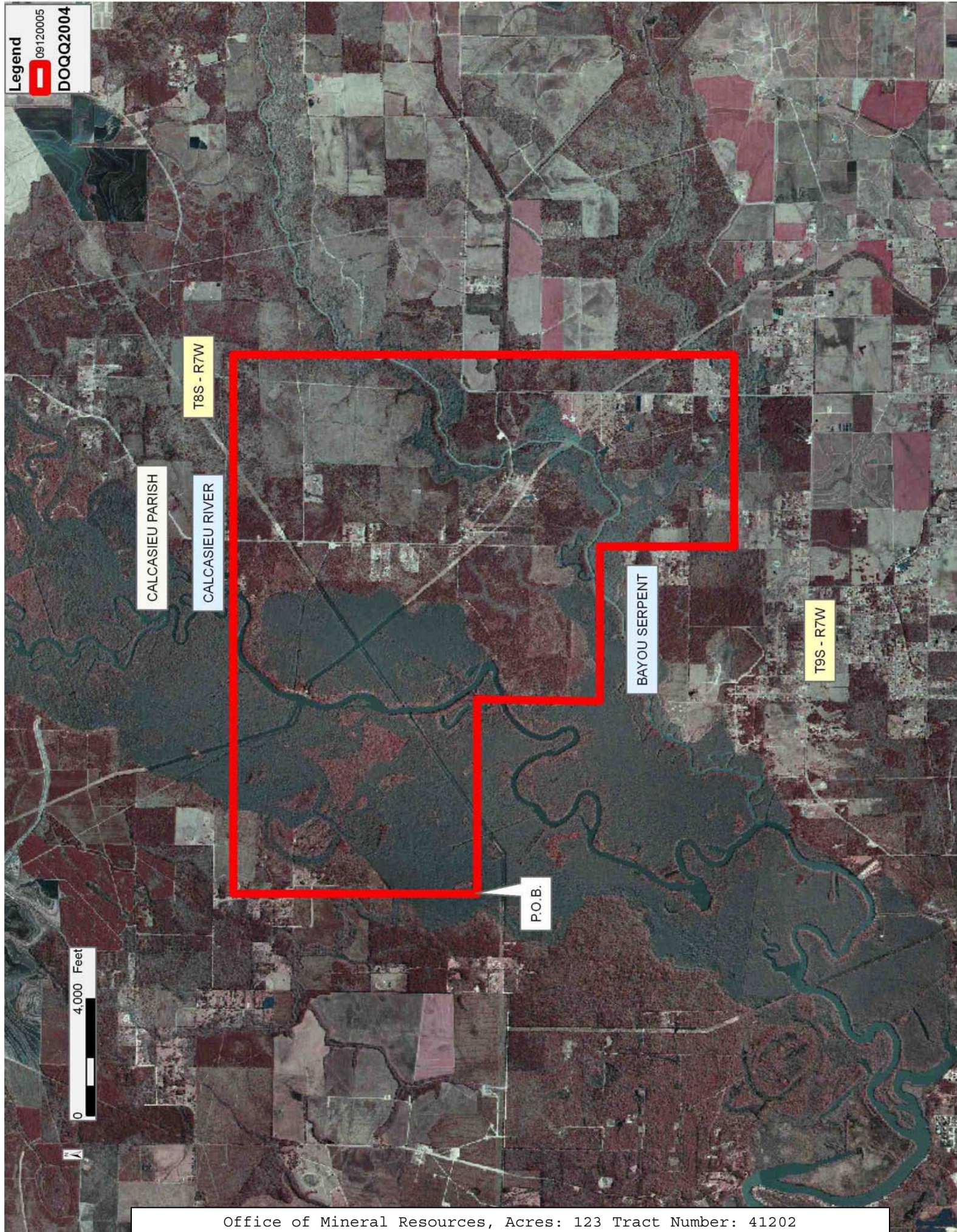
All of the lands now or formerly constituting the beds and bottoms of all water bodies of every nature and description as to which title is vested in the State of Louisiana, together with all islands arising therein and other lands formed by accretion or by reliction, where allowed by law, excepting tax adjudicated lands, and not presently under mineral lease on December 9, 2009, situated in Calcasieu Parish, Louisiana, and more particularly described as follows: Beginning at a point having Coordinates of X = 1,436,390.28 and Y = 610,193.73; thence North 8,366.28 feet to a point having Coordinates of X = 1,436,390.28 and Y = 618,560.01; thence East 18,480.00 feet to a point having Coordinates of X = 1,454,870.28 and Y = 618,560.01; thence South 17,160.01 feet to a point having Coordinates of X = 1,454,870.28 and Y = 601,400.00; thence West 6,570.28 feet to a point having Coordinates of X = 1,448,300.00 and Y = 601,400.00; thence North 4,600.00 feet to a point having Coordinates of X = 1,448,300.00 and Y = 606,000.00; thence West 5,307.20 feet to a point having Coordinates of X = 1,442,992.80 and Y = 606,000.00; thence North 00 degrees 58 minutes 17 seconds East 4,194.33 feet to a point having Coordinates of X = 1,443,063.92 and Y = 610,193.73; thence West 6,673.64 feet to the point of beginning, containing approximately **123 acres**, all as more particularly outlined on a plat on file in the Office of Mineral Resources, Department of Natural Resources. All bearings, distances and coordinates are based on Louisiana Coordinate System of 1927, (North or South Zone), where applicable.

NOTE: The above description of the Tract nominated for lease has been provided and corrected, where required, exclusively by the nomination party. Any mineral lease selected from this Tract and awarded by the Louisiana State Mineral Board shall be without warranty of any kind, either express, implied, or statutory, including, but not limited to, the implied warranties of merchantability and fitness for a particular purpose. Should the mineral lease awarded by the Louisiana State Mineral Board be subsequently modified, cancelled or abrogated due to the existence of conflicting leases, operating agreements, private claims or other future obligations or conditions which may affect all or any portion of the leased Tract, it shall not relieve the Lessee of the obligation to pay any bonus due thereon to the Louisiana State Mineral Board, nor shall the Louisiana State Mineral Board be obligated to refund any consideration paid by the Lessor prior to such modification, cancellation, or abrogation, including, but not limited to, bonuses, rentals and royalties.

NOTE: The above Tract is located upon a restricted scenic river and all operations in this area must be conducted in strict conformity with the regulations of the Corps of Engineers, U.S. Army.

Applicant: TAYLEX, INC.

Bidder	Cash Payment	Price/Acre	Rental	Oil	Gas	Other



TRACT 41203 - Acadia and Lafayette Parishes, Louisiana

All of the lands now or formerly constituting the beds and bottoms of all water bodies of every nature and description as to which title is vested in the State of Louisiana, together with all islands arising therein and other lands formed by accretion or by reliction, where allowed by law, excepting tax adjudicated lands, and not presently under mineral lease on December 9, 2009, situated in Acadia and Lafayette Parishes, Louisiana, and more particularly described as follows:

Beginning at a point having Coordinates of X = 1,714,318.80 and Y = 565,816.35; thence South 72 degrees 15 minutes 02 seconds East 1,145.95 feet to a point having Coordinates of X = 1,715,410.20 and Y = 565,467.00; thence South 48 degrees 48 minutes 48 seconds West 4,463.91 feet to a point having Coordinates of X = 1,712,050.80 and Y = 562,527.45; thence North 72 degrees 47 minutes 45 seconds West 1,267.51 feet to a point having Coordinates of X = 1,710,840.00 and Y = 562,902.35; thence North 50 degrees 02 minutes 56 seconds East 4,538.00 feet to the point of beginning, containing approximately **4 acres**

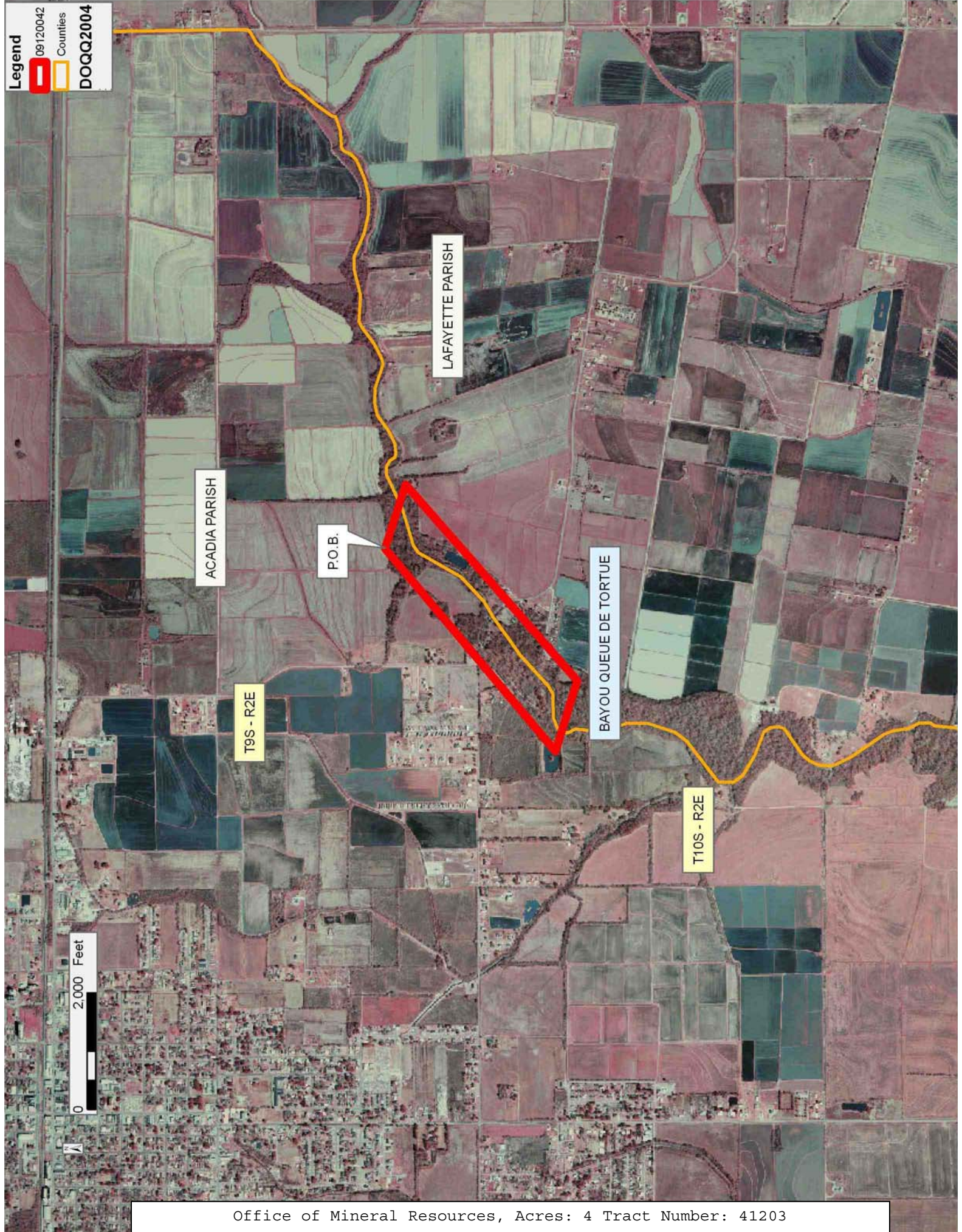
, all as more particularly outlined on a plat on file in the Office of Mineral Resources, Department of Natural Resources. All bearings, distances and coordinates are based on Louisiana Coordinate System of 1927, (North or South Zone), where applicable.

NOTE: The above description of the Tract nominated for lease has been provided and corrected, where required, exclusively by the nomination party. Any mineral lease selected from this Tract and awarded by the Louisiana State Mineral Board shall be without warranty of any kind, either express, implied, or statutory, including, but not limited to, the implied warranties of merchantability and fitness for a particular purpose. Should the mineral lease awarded by the Louisiana State Mineral Board be subsequently modified, cancelled or abrogated due to the existence of conflicting leases, operating agreements, private claims or other future obligations or conditions which may affect all or any portion of the leased Tract, it shall not relieve the Lessee of the obligation to pay any bonus due thereon to the Louisiana State Mineral Board, nor shall the Louisiana State Mineral Board be obligated to refund any consideration paid by the Lessor prior to such modification, cancellation, or abrogation, including, but not limited to, bonuses, rentals and royalties.

Bidder	Cash Payment	Price/Acre	Rental	Oil	Gas	Other

Applicant: BELLARD & COMPANY, INC.

Legend
09120042
Counties
DOQQ2004



TRACT 41204 - Vermilion Parish, Louisiana

All of the lands now or formerly constituting the beds and bottoms of all water bodies of every nature and description as to which title is vested in the State of Louisiana, together with all islands arising therein and other lands formed by accretion or by reliction, where allowed by law, excepting tax adjudicated lands, and not presently under mineral lease on December 9, 2009, situated in Vermilion Parish, Louisiana, and more particularly described as follows: Beginning at a point having Coordinates of X = 1,760,013.76 and Y = 490,432.43; thence East 4,999.59 feet to a point having Coordinates of X = 1,765,013.35 and Y = 490,432.43; thence South 1,850.70 feet to a point having Coordinates of X = 1,765,013.35 and Y = 488,581.73; thence West 4,999.59 feet to a point having Coordinates of X = 1,760,013.76 and Y = 488,581.73; thence North 1,850.70 feet to the point of beginning, containing approximately **17 acres**, all as more particularly outlined on a plat on file in the Office of Mineral Resources, Department of Natural Resources. All bearings, distances and coordinates are based on Louisiana Coordinate System of 1927, (North or South Zone), where applicable.

NOTE: The above description of the Tract nominated for lease has been provided and corrected, where required, exclusively by the nomination party. Any mineral lease selected from this Tract and awarded by the Louisiana State Mineral Board shall be without warranty of any kind, either express, implied, or statutory, including, but not limited to, the implied warranties of merchantability and fitness for a particular purpose. Should the mineral lease awarded by the Louisiana State Mineral Board be subsequently modified, cancelled or abrogated due to the existence of conflicting leases, operating agreements, private claims or other future obligations or conditions which may affect all or any portion of the leased Tract, it shall not relieve the Lessee of the obligation to pay any bonus due thereon to the Louisiana State Mineral Board, nor shall the Louisiana State Mineral Board be obligated to refund any consideration paid by the Lessor prior to such modification, cancellation, or abrogation, including, but not limited to, bonuses, rentals and royalties.

NOTE: This tract is located in Sections 42, 43, 44 of T12S R4E in Grosse Isle Field in Vermilion Parish and is included in the Office of Conservation unit created for the 12,500 RA SUA Order 447-O-2. This tract contains approximately 17 acres of claimable waterbottoms within the Vermilion River. Tract 23 of the official survey unit plat for the 12,500 RA SUA on file with the Office of Conservation includes acreage within this tract, On November 15, 2008, a recompletion of the Duhon No.2, SN 162645 was performed and production re-established in the 12,500 RA SUA. Total production from the unit from November 2008 to June 2009 is 3,312 bbls of oil

Applicant: STAFF OF OFFICE OF MINERAL RESOURCES

Bidder	Cash Payment	Price/Acre	Rental	Oil	Gas	Other



TRACT 41205 - Plaquemines Parish, Louisiana

All of the lands now or formerly constituting the beds and bottoms of all water bodies of every nature and description as to which title is vested in the State of Louisiana, together with all islands arising therein and other lands formed by accretion or by reliction, where allowed by law, excepting tax adjudicated lands, and not presently under mineral lease on December 9, 2009, situated in Plaquemines Parish, Louisiana, and more particularly described as follows: Beginning at a point having Coordinates of X = 2,483,551.00 and Y = 330,851.00; thence South 34 degrees 28 minutes 56 seconds East 12,860.57 feet to a point having Coordinates of X = 2,490,832.00 and Y = 320,250.00; thence South 44 degrees 40 minutes 44 seconds West 3,154.45 feet to a point having Coordinates of X = 2,488,614.00 and Y = 318,007.00; thence North 34 degrees 24 minutes 46 seconds West 11,938.38 feet to a point having Coordinates of X = 2,481,867.00 and Y = 327,856.00; thence North 29 degrees 20 minutes 52 seconds East 3,435.97 feet to the point of beginning, containing approximately **49 acres**, all as more particularly outlined on a plat on file in the Office of Mineral Resources, Department of Natural Resources. All bearings, distances and coordinates are based on Louisiana Coordinate System of 1927, (North or South Zone), where applicable.

NOTE: The above description of the Tract nominated for lease has been provided and corrected, where required, exclusively by the nomination party. Any mineral lease selected from this Tract and awarded by the Louisiana State Mineral Board shall be without warranty of any kind, either express, implied, or statutory, including, but not limited to, the implied warranties of merchantability and fitness for a particular purpose. Should the mineral lease awarded by the Louisiana State Mineral Board be subsequently modified, cancelled or abrogated due to the existence of conflicting leases, operating agreements, private claims or other future obligations or conditions which may affect all or any portion of the leased Tract, it shall not relieve the Lessee of the obligation to pay any bonus due thereon to the Louisiana State Mineral Board, nor shall the Louisiana State Mineral Board be obligated to refund any consideration paid by the Lessor prior to such modification, cancellation, or abrogation, including, but not limited to, bonuses, rentals and royalties.

NOTE: The State of Louisiana does hereby reserve, and this lease shall be subject to, the imprescriptible right of surface use in the nature of a servitude in favor of the Department of Natural Resources, including its Offices and Commissions, for the sole purpose of implementing, constructing, servicing and maintaining approved coastal zone management and/or restoration projects. Utilization of any and all rights derived under this lease by the mineral lessee, its agents, successors or assigns, shall not interfere with nor hinder the reasonable surface use by the Department of Natural Resources, its Offices or Commissions, as herein above reserved.

NOTE: The Department of Wildlife and Fisheries has designated certain areas in the coastal waters of the State of Louisiana as Oyster Seed Bed Areas. The exact location of those Seed Bed Areas must be obtained from the Department of Wildlife and Fisheries and any work done under a mineral lease from the State of Louisiana may necessarily be conducted in conformity with the rules and regulations promulgated by the said Department of Wildlife and Fisheries for Oyster Seed Bed Areas.

Applicant: JONATHAN SMITH

Bidder	Cash Payment	Price/Acre	Rental	Oil	Gas	Other



TRACT 41206 - Plaquemines Parish, Louisiana

All of the lands now or formerly constituting the beds and bottoms of all water bodies of every nature and description as to which title is vested in the State of Louisiana, together with all islands arising therein and other lands formed by accretion or by reliction, where allowed by law, excepting tax adjudicated lands, and not presently under mineral lease on December 9, 2009, situated in Plaquemines Parish, Louisiana, and more particularly described as follows: Beginning at a point having Coordinates of X = 2,481,000.00 and Y = 291,060.00; thence South approximately 11,925 feet to a point on the North boundary of State Lease No. 2028, as amended, having a Coordinate of X = 2,481,000.00; thence along the boundary of said State Lease No. 2028 the following: Westerly approximately 3,650 feet; Southerly approximately 3,990 feet; Westerly approximately 4,580 feet and Southerly approximately 459 feet to the Easternmost Northeast corner of State Lease No. 18148; thence North 54 degrees 12 minutes 59 seconds West approximately 1,629 feet along the Northern boundary of said State Lease No. 18148 to the Easternmost Southeast corner of State Lease No. 18671, as amended, having Coordinates of X = 2,471,501.04 and Y = 275,363.19; thence along the boundary of said State Lease No. 18671 the following courses: North 21 degrees 05 minutes 13 seconds East 3,354.49 feet to its Northeast corner having Coordinates of X = 2,472,707.94 and Y = 278,493.05 and North 86 degrees 02 minutes 56 seconds West 4,318.20 feet to a point having Coordinates of X = 2,468,400.00 and Y = 278,790.59; thence North 3,141.12 feet to the Southwest corner of State Lease No. 17378, as amended, having Coordinates of X = 2,468,400.00 and Y = 281,931.71; thence along the boundary of said State Lease No. 17378 the following courses: South 89 degrees 45 minutes 25 seconds East 5,147.49 feet to its Southeast corner having Coordinates of X = 2,473,547.44 and Y = 281,909.88; North 3,271.93 feet to its Easternmost Northeast corner having Coordinates of X = 2,473,547.44 and Y = 285,181.81 and North 67 degrees 57 minutes 57 seconds West 1,380.33 feet to a point having Coordinates of X = 2,472,267.93 and Y = 285,699.65; thence North 3,447.89 feet to a point on the Southwest boundary of State Lease No. 12036, as amended, having Coordinates of X = 2,472,267.93 and Y = 289,147.54; thence along the boundary of said State Lease No. 12036 the following courses: South 55 degrees 21 minutes 12 seconds East 3,928.74 feet to its Southern most corner having Coordinates of X = 2,475,500.00 and Y = 286,914.00 and North 4,086.00 feet to a point having Coordinates of X = 2,475,500.00 and Y = 291,000.00; thence North 89 degrees 22 minutes 30 seconds East 5,500.32 feet to the point of beginning, containing approximately **2,039 acres**, all as more particularly outlined on a plat on file in the Office of Mineral Resources, Department of Natural Resources. All bearings, distances and coordinates are based on Louisiana Coordinate System of 1927, (North or South Zone), where applicable.

NOTE: The above description of the Tract nominated for lease has been provided and corrected, where required, exclusively by the nomination party. Any mineral lease selected from this Tract and awarded by the Louisiana State Mineral Board shall be without warranty of any kind,

either express, implied, or statutory, including, but not limited to, the implied warranties of merchantability and fitness for a particular purpose. Should the mineral lease awarded by the Louisiana State Mineral Board be subsequently modified, cancelled or abrogated due to the existence of conflicting leases, operating agreements, private claims or other future obligations or conditions which may affect all or any portion of the leased Tract, it shall not relieve the Lessee of the obligation to pay any bonus due thereon to the Louisiana State Mineral Board, nor shall the Louisiana State Mineral Board be obligated to refund any consideration paid by the Lessor prior to such modification, cancellation, or abrogation, including, but not limited to, bonuses, rentals and royalties.

NOTE: The State of Louisiana does hereby reserve, and this lease shall be subject to, the imprescriptible right of surface use in the nature of a servitude in favor of the Department of Natural Resources, including its Offices and Commissions, for the sole purpose of implementing, constructing, servicing and maintaining approved coastal zone management and/or restoration projects. Utilization of any and all rights derived under this lease by the mineral lessee, its agents, successors or assigns, shall not interfere with nor hinder the reasonable surface use by the Department of Natural Resources, its Offices or Commissions, as herein above reserved.

NOTE: The Department of Wildlife and Fisheries has designated certain areas in the coastal waters of the State of Louisiana as Oyster Seed Bed Areas. The exact location of those Seed Bed Areas must be obtained from the Department of Wildlife and Fisheries and any work done under a mineral lease from the State of Louisiana may necessarily be conducted in conformity with the rules and regulations promulgated by the said Department of Wildlife and Fisheries for Oyster Seed Bed Areas.

Applicant: HAROLD J. ANDERSON, INC.

Bidder	Cash Payment	Price/Acre	Rental	Oil	Gas	Other

Legend

09/12/20039

Active_Leases

DOQQ2004

0 4,000 Feet

PLAQUEMINES PARISH

P.O.B.

BAY BATISTE

SL 12036

SL 9572

SL 17376

SL 17378

SL 18671

SL 2028

SL 18148

BARATARIA BAY

TRACT 41207 - Plaquemines Parish, Louisiana

All of the lands now or formerly constituting the beds and bottoms of all water bodies of every nature and description as to which title is vested in the State of Louisiana, together with all islands arising therein and other lands formed by accretion or by reliction, where allowed by law, excepting tax adjudicated lands, and not presently under mineral lease on December 9, 2009, situated in Plaquemines Parish, Louisiana, and more particularly described as follows: Beginning at the Northeast corner of State Lease No. 19973 having Coordinates of X = 2,460,230.00 and Y = 288,915.00; thence North 1,385.00 feet to a point having Coordinates of X = 2,460,230.00 and Y = 290,300.00; thence East 3,379.55 feet to a point on the Southwestern boundary of State Lease No. 8512, as amended, having Coordinates of X = 2,463,609.55 and Y = 290,300.00; thence along the boundary of said State Lease No. 8512 the following courses: South 62 degrees 58 minutes 05 seconds East 136.62 feet; North 87 degrees 24 minutes 35 seconds East 392.30 feet; South 85 degrees 16 minutes 00 seconds East 300.06 feet; South 78 degrees 48 minutes 21 seconds East 240.61 feet; South 75 degrees 57 minutes 47 seconds East 218.56 feet; South 70 degrees 06 minutes 25 seconds East 293.54 feet; South 57 degrees 55 minutes 59 seconds East 364.28 feet; South 49 degrees 40 minutes 50 seconds East 256.67 feet and South 44 degrees 36 minutes 36 seconds East 245.63 feet to its Southernmost Southwest corner, also being a point on the North boundary of State Lease No. 9571, as amended, having Coordinates of X = 2,465,823.18 and Y = 289,496.93; thence along the boundary of said State Lease No. 9571 the following courses: West 123.18 feet to its Northwest corner having Coordinates of X = 2,465,700.00 and Y = 289,496.93; South 2,391.55 feet to its Southwest corner having Coordinates of X = 2,465,700.00 and Y = 287,105.38; North 80 degrees 14 minutes 51 seconds East 2,227.04 feet to a point and North 83 degrees 25 minutes 07 seconds East 105.84 feet to its Southeast corner, also being the Southwest corner of State Lease No. 9572, as amended, having Coordinates of X = 2,468,000.00 and Y = 287,494.75; thence along the boundary of said State Lease No. 9572 the following courses: North 83 degrees 25 minutes 25 seconds East 204.28 feet; North 89 degrees 45 minutes 07 seconds East 293.25 feet; South 84 degrees 22 minutes 02 seconds East 369.22 feet; South 77 degrees 11 minutes 13 seconds East 288.23 feet; South 78 degrees 19 minutes 57 seconds East 525.58 feet; South 83 degrees 18 minutes 03 seconds East 517.33 feet; South 88 degrees 20 minutes 31 seconds East 483.12 feet; North 88 degrees 43 minutes 47 seconds East 595.95 feet; North 86 degrees 02 minutes 26 seconds East 717.71 feet; North 24 degrees 02 minutes 22 seconds West 174.15 feet; North 39 degrees 59 minutes 30 seconds West 218.13 feet; North 51 degrees 18 minutes 30 seconds West 277.70 feet; and North 65 degrees 25 minutes 51 seconds West 110.06 feet to its Northeast corner, also being the Easternmost corner of State Lease No. 9570, as amended, having Coordinates of X = 2,471,439.94 feet and Y = 287,846.93; thence along the boundary of said State Lease No. 9570 the following courses: North 65 degrees 22 minutes 32 seconds West 188.98 feet; North 89 degrees 16 minutes 27 seconds West 1,018.41 feet; North 79 degrees 28 minutes 18 seconds West 256.29 feet; North 72 degrees 46

minutes 10 seconds West 317.74 feet; North 66 degrees 03 minutes 29 seconds West 337.70 feet; North 66 degrees 20 minutes 16 seconds West 370.63 feet; North 70 degrees 36 minutes 13 seconds West 261.00 feet; North 75 degrees 44 minutes 12 seconds West 223.40 feet; North 79 degrees 26 minutes 40 seconds West 369.29 feet and North 83 degrees 59 minutes 45 seconds West 221.72 feet to its Northwest corner, also being a point on the East boundary of said State Lease No. 9571 having Coordinates of X = 2,468,000.00 and Y = 288,597.88; thence along the boundary of said State Lease No. 9571 the following courses: thence North 899.05 feet to its Northeast corner having Coordinates of X = 2,468,000.00 and Y = 289,496.93 and West 1,864.91 feet to the Southernmost Southeast corner of said State Lease No. 8512 having Coordinates of X = 2,466,135.09 and Y = 289,496.93; thence North 26 degrees 08 minutes 33 seconds East 1,756.29 feet along the Southeast boundary of said State Lease No. 8512 to its Easternmost corner having Coordinates of X = 2,466,908.92 and Y = 291,073.56; thence South 89 degrees 28 minutes 07 seconds East 2,607.06 feet to the Westernmost corner of State Lease No. 12036, as amended, having Coordinates of X = 2,469,515.87 and Y = 291,049.37; thence South 55 degrees 21 minutes 12 seconds East 3,345.26 feet along the Southern boundary of said State Lease No. 12036 to a point having Coordinates of X = 2,472,267.93 and Y = 289,147.54; thence South 3,447.89 feet to a point on the Northern boundary of State Lease No. 17378, as amended, having Coordinates of X = 2,472,267.93 and Y = 285,699.65; thence West 3,867.93 feet along the North boundary of said State Lease No. 17378 to its Northwest corner, also being the Northeast corner of State Lease No. 17376, as amended, having Coordinates of X = 2,468,400.00 and Y = 285,699.65; thence West 3,027.84 feet along the North boundary of said State Lease No. 17376 to its Northwest corner, also being the Northeast corner of State Lease No. 20020 having Coordinates of X = 2,465,372.16 and Y = 285,699.65; thence along the boundary of said State Lease No. 20020 the following courses: West 184.75 feet; South 20 degrees 39 minutes 03 seconds West 854.56 feet and West 486.03 feet to its Northwest corner, also being the Northeast corner of State Lease No. 20117 having Coordinates of X = 2,464,400.00 and Y = 284,900.00; thence along the boundary of said State Lease No. 20117 the following courses: West 1,000.00 feet to its Northwest corner having Coordinates of X = 2,463,400.00 and Y = 284,900.00; South 2,955.45 feet to its Southwest corner having Coordinates of X = 2,463,400.00 and Y = 281,944.55 and East 372.16 feet to its Southeast corner, also being the Southwest corner of said State Lease No. 20020 having Coordinates of X = 2,463,772.16 and Y = 281,944.55; thence East 1,600.00 feet along the South boundary of said State Lease No. 20020 to its Southeast corner, also being the Southwest corner of said State Lease No. 17376 having Coordinates of X = 2,465,372.16 and Y = 281,944.55; thence South 89 degrees 45 minutes 25 seconds East 3,027.86 feet along the South boundary of said State Lease No. 17376 to its Southeast corner, also being the Southwest corner of said State Lease No. 17378 having Coordinates of X = 2,468,400.00 and Y = 281,931.71; thence South 3,141.12 feet to a point on the Northern boundary of State Lease No. 18671, as amended, having Coordinates of X = 2,468,400.00 and Y = 278,790.59; thence North 86 degrees 02 minutes 56

seconds West 10,154.13 feet along the North boundary of said State Lease No. 18671 to its Northwest corner having Coordinates of X = 2,458,270.00 and Y = 279,490.26; thence North 25 degrees 10 minutes 43 seconds West 2,952.24 feet to the Southwest corner of said State Lease No. 19973 having Coordinates of X = 2,457,014.00 and Y = 282,162.00; thence along the boundary of said State Lease No. 19973 the following courses: East 3,216.00 feet to its Southeast corner having Coordinates of X = 2,460,230.00 and Y = 282,162.00 and North 6,753.00 feet to the point of beginning, containing approximately **1,792 acres**, all as more particularly outlined on a plat on file in the Office of Mineral Resources, Department of Natural Resources. All bearings, distances and coordinates are based on Louisiana Coordinate System of 1927, (North or South Zone), where applicable.

NOTE: The above description of the Tract nominated for lease has been provided and corrected, where required, exclusively by the nomination party. Any mineral lease selected from this Tract and awarded by the Louisiana State Mineral Board shall be without warranty of any kind, either express, implied, or statutory, including, but not limited to, the implied warranties of merchantability and fitness for a particular purpose. Should the mineral lease awarded by the Louisiana State Mineral Board be subsequently modified, cancelled or abrogated due to the existence of conflicting leases, operating agreements, private claims or other future obligations or conditions which may affect all or any portion of the leased Tract, it shall not relieve the Lessee of the obligation to pay any bonus due thereon to the Louisiana State Mineral Board, nor shall the Louisiana State Mineral Board be obligated to refund any consideration paid by the Lessor prior to such modification, cancellation, or abrogation, including, but not limited to, bonuses, rentals and royalties.

NOTE: The State of Louisiana does hereby reserve, and this lease shall be subject to, the imprescriptible right of surface use in the nature of a servitude in favor of the Department of Natural Resources, including its Offices and Commissions, for the sole purpose of implementing, constructing, servicing and maintaining approved coastal zone management and/or restoration projects. Utilization of any and all rights derived under this lease by the mineral lessee, its agents, successors or assigns, shall not interfere with nor hinder the reasonable surface use by the Department of Natural Resources, its Offices or Commissions, as herein above reserved.

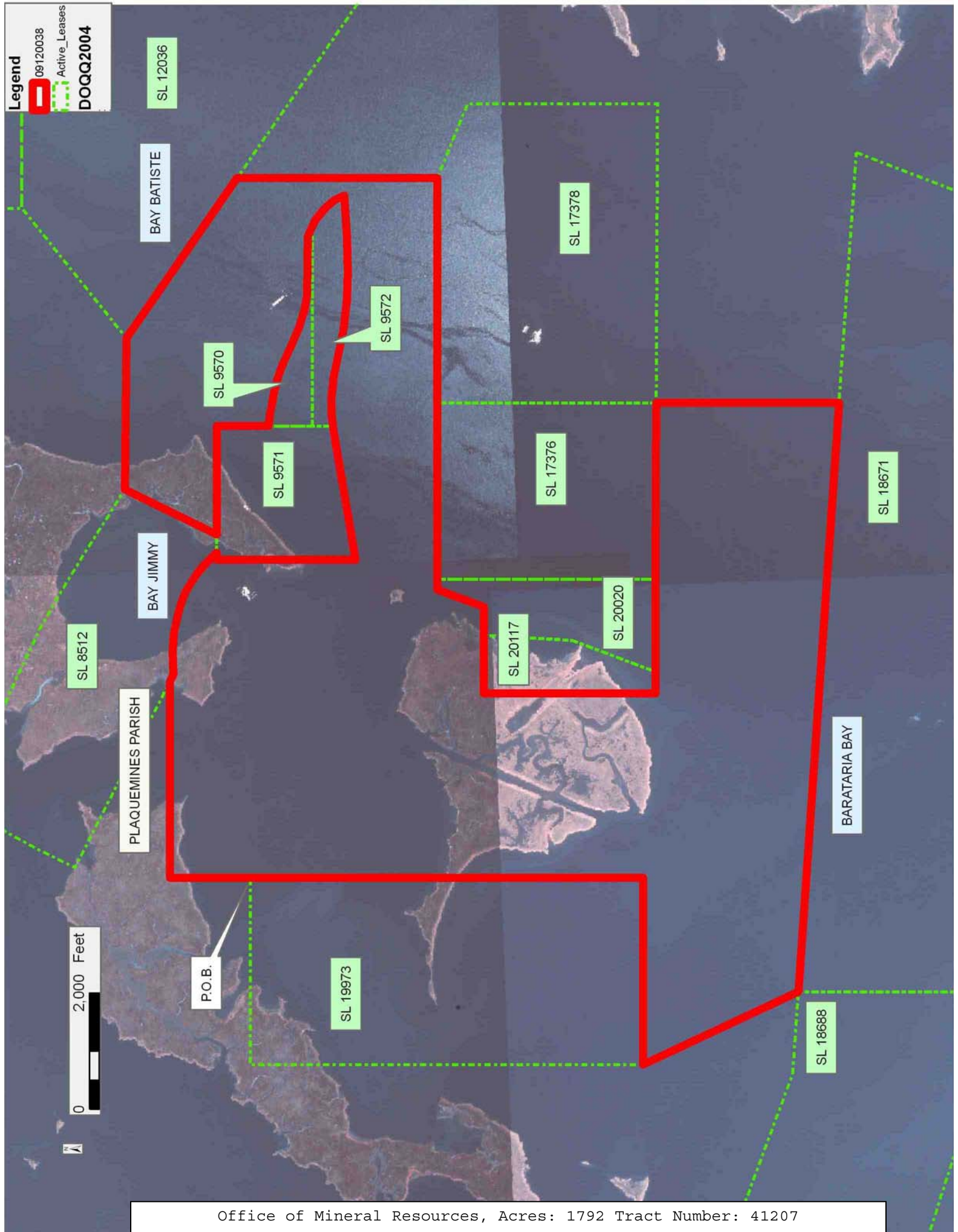
NOTE: The Department of Wildlife and Fisheries has designated certain areas in the coastal waters of the State of Louisiana as Oyster Seed Bed Areas. The exact location of those Seed Bed Areas must be obtained from the Department of Wildlife and Fisheries and any work done under a mineral lease from the State of Louisiana may necessarily be conducted in conformity with the rules and regulations promulgated by the said Department of Wildlife and Fisheries for Oyster Seed Bed Areas.

Applicant: HAROLD J. ANDERSON, INC.

Bidder	Cash Payment	Price/Acre	Rental	Oil	Gas	Other

Legend

- 09120038
- Active_Leases
- DOQQ2004



TRACT 41208 - Plaquemines Parish, Louisiana

All of the lands now or formerly constituting the beds and bottoms of all water bodies of every nature and description as to which title is vested in the State of Louisiana, together with all islands arising therein and other lands formed by accretion or by reliction, where allowed by law, excepting tax adjudicated lands, and not presently under mineral lease on December 9, 2009, situated in Plaquemines Parish, Louisiana, and more particularly described as follows: Beginning at the Northeast corner of State Lease No. 12721, as amended, having Coordinates of X = 2,446,226.36 and Y = 290,300.00; thence East 14,003.64 feet to a point having Coordinates of X = 2,460,230.00 and Y = 290,300.00; thence South 1,385.00 feet to the Northeast corner of State Lease No. 19973 having Coordinates of X = 2,460,230.00 and Y = 288,915.00; thence along the boundary of said State Lease No. 19973 the following courses: thence West 3,216.00 feet to its Northwest corner having Coordinates of X = 2,457,014.00 and Y = 288,915.00 and South 6,753.00 feet to its Southwest corner having Coordinates of X = 2,457,014.00 and Y = 282,162.00; thence South 25 degrees 10 minutes 43 seconds East 2,952.24 feet to the Northeast corner of State Lease No. 18688 having Coordinates of X = 2,458,270.00 and Y = 279,490.26; thence along the boundary of said State Lease No. 18688 the following courses: North 86 degrees 02 minutes 56 seconds West 1,422.52 feet to a point having Coordinates of X = 2,456,850.86 and Y = 279,588.28 and North 69 degrees 38 minutes 02 seconds West 3,221.23 feet to its Northernmost Northwest corner, also being a point on the East boundary of State Lease No. 18668 having Coordinates of X = 2,453,830.99 and Y = 280,709.32; thence along the boundary of said State Lease No. 18668 the following courses: North 01 degrees 49 minutes 18 seconds West 2,623.21 feet to its Northeast corner having Coordinates of X = 2,453,747.60 and Y = 283,331.20 and North 89 degrees 50 minutes 25 seconds West 5,647.62 feet to its Northwest corner, also being a point on the East boundary of State Lease No. 18669 having Coordinates of X = 2,448,100.00 and Y = 283,346.96; thence along the boundary of said State Lease No. 18669 the following courses: North 1,353.04 feet to its Northeast corner having Coordinates of X = 2,448,100.00 and Y = 284,700.00 and West 5,800.00 feet to a point having Coordinates of X = 2,442,300.00 and Y = 284,700.00; thence North 4,489.79 feet to a point on the Southern boundary of State Lease No. 19384 having Coordinates of X = 2,442,300.00 and Y = 289,189.79; thence North 83 degrees 37 minutes 00 seconds East 2,158.69 feet along the Southern boundary of said State Lease No. 19384 to its Southeast corner, also being the Southwest corner of said State Lease No. 12721 having Coordinates of X = 2,444,445.31 and Y = 289,429.79; thence along the boundary of said State Lease No. 12721 the following courses: North 83 degrees 37 minutes 00 seconds East 1,866.76 feet to its Southeast corner having Coordinates of X = 2,446,300.50 and Y = 289,637.34 and North 06 degrees 23 minutes 00 seconds West 666.79 feet to the point of beginning, containing approximately **2,108 acres**, all as more particularly outlined on a plat on file in the Office of Mineral Resources, Department of Natural Resources. All bearings, distances and coordinates are based on Louisiana Coordinate System of 1927, (North or South Zone), where applicable.

NOTE: The above description of the Tract nominated for lease has been provided and corrected, where required, exclusively by the nomination party. Any mineral lease selected from this Tract and awarded by the Louisiana State Mineral Board shall be without warranty of any kind, either express, implied, or statutory, including, but not limited to, the implied warranties of merchantability and fitness for a particular purpose. Should the mineral lease awarded by the Louisiana State Mineral Board be subsequently modified, cancelled or abrogated due to the existence of conflicting leases, operating agreements, private claims or other future obligations or conditions which may affect all or any portion of the leased Tract, it shall not relieve the Lessee of the obligation to pay any bonus due thereon to the Louisiana State Mineral Board, nor shall the Louisiana State Mineral Board be obligated to refund any consideration paid by the Lessor prior to such modification, cancellation, or abrogation, including, but not limited to, bonuses, rentals and royalties.

NOTE: The State of Louisiana does hereby reserve, and this lease shall be subject to, the imprescriptible right of surface use in the nature of a servitude in favor of the Department of Natural Resources, including its Offices and Commissions, for the sole purpose of implementing, constructing, servicing and maintaining approved coastal zone management and/or restoration projects. Utilization of any and all rights derived under this lease by the mineral lessee, its agents, successors or assigns, shall not interfere with nor hinder the reasonable surface use by the Department of Natural Resources, its Offices or Commissions, as herein above reserved.

NOTE: The Department of Wildlife and Fisheries has designated certain areas in the coastal waters of the State of Louisiana as Oyster Seed Bed Areas. The exact location of those Seed Bed Areas must be obtained from the Department of Wildlife and Fisheries and any work done under a mineral lease from the State of Louisiana may necessarily be conducted in conformity with the rules and regulations promulgated by the said Department of Wildlife and Fisheries for Oyster Seed Bed Areas.

Applicant: HAROLD J. ANDERSON, INC.

Bidder	Cash Payment	Price/Acre	Rental	Oil	Gas	Other

Legend

09/12/20031

Active_Leases

DOQQ2004

0 3,000 Feet

PLAQUEMINES PARISH

WILKINSON BAYOU

P.O.B.

SL 11036

SL 12721

SL 19384

BARATARIA BAY

SL 19973

SL 18668

SL 18669

SL 18668

SL 18671

TRACT 41209 - Jefferson and Plaquemines Parishes, Louisiana

All of the lands now or formerly constituting the beds and bottoms of all water bodies of every nature and description as to which title is vested in the State of Louisiana, together with all islands arising therein and other lands formed by accretion or by reliction, where allowed by law, excepting tax adjudicated lands, and not presently under mineral lease on December 9, 2009, situated in Jefferson and Plaquemines Parishes, Louisiana, and more particularly described as follows: Beginning at a point having Coordinates of X = 2,424,788.38 and Y = 289,887.38; thence East 5,136.96 feet to the Southernmost corner of State Lease No. 15858, as amended, having Coordinates of X = 2,429,925.34 and Y = 289,887.38; thence East 10,711.97 feet to a point on the West boundary of State Lease No. 19384 having Coordinates of X = 2,440,637.31 and Y = 289,887.38; thence along the boundary of said State Lease No. 19384 the following courses: South 06 degrees 23 minutes 00 seconds East 878.12 feet to its Southwest corner having Coordinates of X = 2,440,734.94 and Y = 289,014.70 and North 83 degrees 37 minutes 00 seconds East 1,574.83 feet to a point on its South boundary having Coordinates of X = 2,442,300.00 and Y = 289,189.79; thence South 4,489.79 feet to a point on the North boundary of State Lease No. 18669 having Coordinates of X = 2,442,300.00 and Y = 284,700.00; thence along the boundary of said State Lease No. 18669 the following courses: West 3,853.48 feet to its Northwest corner having Coordinates of X = 2,438,446.52 and Y = 284,700.00 and South 1,030.74 feet to the Northeast corner of State Lease No. 18689 having Coordinates of X = 2,438,446.52 and Y = 283,669.26; thence North 82 degrees 20 minutes 26 seconds West 2,433.82 feet along the North boundary of said State Lease No. 18689 to its Northwest corner having Coordinates of X = 2,436,034.42 and Y = 283,993.65; thence North 87 degrees 18 minutes 21 seconds West 5,540.54 feet to a point having Coordinates of X = 2,430,500.00 and Y = 284,254.08; thence South 2,411.93 feet to a point having Coordinates of X = 2,430,500.00 and Y = 281,842.15; thence West 3,229.13 feet to the Northeast corner of State Lease No. 15822, as amended, having Coordinates of X = 2,427,270.87 and Y = 281,842.15; thence West 2,482.49 feet along the North boundary of said State Lease No. 15822 to a point having Coordinates of X = 2,424,788.38 and Y = 281,842.15; thence North 8,045.23 feet to the point of beginning, containing approximately **2,174 acres**, all as more particularly outlined on a plat on file in the Office of Mineral Resources, Department of Natural Resources. All bearings, distances and coordinates are based on Louisiana Coordinate System of 1927, (North or South Zone), where applicable.

NOTE: The above description of the Tract nominated for lease has been provided and corrected, where required, exclusively by the nomination party. Any mineral lease selected from this Tract and awarded by the Louisiana State Mineral Board shall be without warranty of any kind, either express, implied, or statutory, including, but not limited to, the implied warranties of merchantability and fitness for a particular purpose. Should the mineral lease awarded by the Louisiana State Mineral Board be subsequently modified, cancelled or abrogated due to the

existence of conflicting leases, operating agreements, private claims or other future obligations or conditions which may affect all or any portion of the leased Tract, it shall not relieve the Lessee of the obligation to pay any bonus due thereon to the Louisiana State Mineral Board, nor shall the Louisiana State Mineral Board be obligated to refund any consideration paid by the Lessor prior to such modification, cancellation, or abrogation, including, but not limited to, bonuses, rentals and royalties.

NOTE: The State of Louisiana does hereby reserve, and this lease shall be subject to, the imprescriptible right of surface use in the nature of a servitude in favor of the Department of Natural Resources, including its Offices and Commissions, for the sole purpose of implementing, constructing, servicing and maintaining approved coastal zone management and/or restoration projects. Utilization of any and all rights derived under this lease by the mineral lessee, its agents, successors or assigns, shall not interfere with nor hinder the reasonable surface use by the Department of Natural Resources, its Offices or Commissions, as herein above reserved.

NOTE: The Department of Wildlife and Fisheries has designated certain areas in the coastal waters of the State of Louisiana as Oyster Seed Bed Areas. The exact location of those Seed Bed Areas must be obtained from the Department of Wildlife and Fisheries and any work done under a mineral lease from the State of Louisiana may necessarily be conducted in conformity with the rules and regulations promulgated by the said Department of Wildlife and Fisheries for Oyster Seed Bed Areas.

Applicant: HAROLD J. ANDERSON, INC.

Bidder	Cash Payment	Price/Acre	Rental	Oil	Gas	Other

Legend

- ▬ 09120032
- - - Active_Leases
- ▬ Counties

DOQQ2004



TRACT 41210 - Jefferson Parish, Louisiana

All of the lands now or formerly constituting the beds and bottoms of all water bodies of every nature and description as to which title is vested in the State of Louisiana, together with all islands arising therein and other lands formed by accretion or by reliction, where allowed by law, excepting tax adjudicated lands, and not presently under mineral lease on December 9, 2009, situated in Jefferson Parish, Louisiana, and more particularly described as follows: Beginning at a point having Coordinates of X = 2,430,500.00 and Y = 284,254.08; thence South 87 degrees 18 minutes 21 seconds East 5,540.54 feet to the Northwest corner of State Lease No. 18689 having Coordinates of X = 2,436,034.42 and Y = 283,993.65; thence along the boundary of said State Lease No. 18689 the following courses: South 04 degrees 49 minutes 49 seconds West 3,208.96 feet to its Southwest corner having Coordinates of X = 2,435,764.21 and Y = 280,796.09 and South 81 degrees 18 minutes 44 seconds East 2,713.44 feet to its Southeast corner, also being a point on the Western boundary of State Lease No. 18669 having Coordinates of X = 2,438,446.52 and Y = 280,386.22; thence along the boundary of said State Lease No. 18669 the following courses: South 16.36 feet to a point having Coordinates of X = 2,438,446.52 and Y = 280,369.86 and South 77 degrees 29 minutes 17 seconds East approximately 669 feet to the Northwest corner of State Lease No. 3035, as amended; thence Southerly approximately 2,350 feet along the West boundary of said State Lease No. 3035 to the Northeast corner of State Lease No. 14374 said to have Coordinates of X = 2,439,127.83 and Y = 277,875.60; thence along the boundary of said State Lease No. 14374 the following courses: West 1,002.81 feet to its Northwest corner having Coordinates of X = 2,438,125.02 and Y = 277,875.60 and South 00 degrees 38 minutes 44 seconds East 333.69 feet to the Northeast corner of State Lease No. 14534 having Coordinates of X = 2,438,128.78 and Y = 277,541.93; thence along the boundary of said State Lease No. 14534 the following courses: West 2,996.76 feet to its Northwest corner having Coordinates of X = 2,435,132.02 and Y = 277,541.93 and South 2,009.62 feet to the Northeast corner of State Lease No. 15631, as amended, having Coordinates of X = 2,435,132.02 and Y = 275,532.31; thence along the boundary of said State Lease No. 15631 the following courses: West 4,004.19 feet to its Northwest corner having Coordinates of X = 2,431,127.83 and Y = 275,532.31 feet and South 3,727.68 feet to the Northeast corner of State Lease No. 20066 having Coordinates of X = 2,431,127.83 and Y = 271,804.63; thence West 2,105.00 feet along the North boundary of said State Lease No. 20066 to its Northwest corner having Coordinates of X = 2,429,022.83 and Y = 271,804.63; thence West approximately 4,434 feet to a point on the Eastern boundary of State Lease No. 1217, as amended, having a Coordinate of Y = 271,804.63; thence North approximately 1,542 feet along the Eastern boundary of said State Lease No. 1217 to a Northeast corner; thence Northerly approximately 4,234 feet to the Southwest corner of State Lease No. 15823, as amended, having Coordinates of X = 2,424,570.87 and Y = 277,580.16; thence along the boundary of said State Lease No. 15823 the following courses: East 2,700.00 feet to its Southeast corner having Coordinates of X = 2,427,270.87 and Y = 277,580.15 and North 295.46 feet

to its Northeast corner, also being the Southeast corner of State Lease No. 15822, as amended, having Coordinates of X = 2,427,270.87 and Y = 277,875.61; thence North 3,966.54 feet along the East boundary of said State Lease No. 15822 to its Northeast corner having Coordinates of X = 2,427,270.87 and Y = 281,842.15; thence East 3,229.13 feet to a point having Coordinates of X = 2,430,500.00 and Y = 281,842.15; thence North 2,411.93 feet to the point of beginning, **LESS AND EXCEPT** that portion, if any, of State Lease No. 1217, as amended, and State Lease No. 3035, as amended, which may lie within the above described tract, containing approximately **2,168 acres**, all as more particularly outlined on a plat on file in the Office of Mineral Resources, Department of Natural Resources. All bearings, distances and coordinates are based on Louisiana Coordinate System of 1927, (North or South Zone), where applicable.

NOTE: The above description of the Tract nominated for lease has been provided and corrected, where required, exclusively by the nomination party. Any mineral lease selected from this Tract and awarded by the Louisiana State Mineral Board shall be without warranty of any kind, either express, implied, or statutory, including, but not limited to, the implied warranties of merchantability and fitness for a particular purpose. Should the mineral lease awarded by the Louisiana State Mineral Board be subsequently modified, cancelled or abrogated due to the existence of conflicting leases, operating agreements, private claims or other future obligations or conditions which may affect all or any portion of the leased Tract, it shall not relieve the Lessee of the obligation to pay any bonus due thereon to the Louisiana State Mineral Board, nor shall the Louisiana State Mineral Board be obligated to refund any consideration paid by the Lessor prior to such modification, cancellation, or abrogation, including, but not limited to, bonuses, rentals and royalties.

NOTE: The State of Louisiana does hereby reserve, and this lease shall be subject to, the imprescriptible right of surface use in the nature of a servitude in favor of the Department of Natural Resources, including its Offices and Commissions, for the sole purpose of implementing, constructing, servicing and maintaining approved coastal zone management and/or restoration projects. Utilization of any and all rights derived under this lease by the mineral lessee, its agents, successors or assigns, shall not interfere with nor hinder the reasonable surface use by the Department of Natural Resources, its Offices or Commissions, as herein above reserved.

NOTE: The Department of Wildlife and Fisheries has designated certain areas in the coastal waters of the State of Louisiana as Oyster Seed Bed Areas. The exact location of those Seed Bed Areas must be obtained from the Department of Wildlife and Fisheries and any work done under a mineral lease from the State of Louisiana may necessarily be conducted in conformity with the rules and regulations promulgated by the said Department of Wildlife and Fisheries for Oyster Seed Bed Areas.

Applicant: HAROLD J. ANDERSON, INC.

Bidder	Cash Payment	Price/Acre	Rental	Oil	Gas	Other

Legend

- ▬ 09/12/2022
- ▬ Active_Leases
- ▬ Counties

DOQQ2004

