

**TRACT 41191 - Sabine Parish, Louisiana**

All of the lands now or formerly constituting the beds and bottoms of all water bodies of every nature and description as to which title is vested in the State of Louisiana, together with all islands arising therein and other lands formed by accretion or by reliction, where allowed by law, excepting tax adjudicated lands, and not presently under mineral lease on December 9, 2009, situated in Sabine Parish, Louisiana, and more particularly described as follows: Beginning at a point having Coordinates of X = 1,617,608.68 and Y = 377,868.67; thence South 89 degrees 21 minutes 46 seconds East 4,893.96 feet to a point having Coordinates of X = 1,622,502.34 and Y = 377,814.24; thence South 04 degrees 27 minutes 32 seconds East 4,845.08 feet to a point having Coordinates of X = 1,622,879.01 and Y = 372,983.82; thence North 88 degrees 59 minutes 27 seconds West 5,302.66 feet to a point having Coordinates of X = 1,617,577.17 and Y = 373,077.21; thence North 00 degrees 22 minutes 36 seconds East 4,791.56 feet to the point of beginning, containing approximately **3 acres**, all as more particularly outlined on a plat on file in the Office of Mineral Resources, Department of Natural Resources. All bearings, distances and coordinates are based on Louisiana Coordinate System of 1927, (North or South Zone), where applicable.

NOTE: The above description of the Tract nominated for lease has been provided and corrected, where required, exclusively by the nomination party. Any mineral lease selected from this Tract and awarded by the Louisiana State Mineral Board shall be without warranty of any kind, either express, implied, or statutory, including, but not limited to, the implied warranties of merchantability and fitness for a particular purpose. Should the mineral lease awarded by the Louisiana State Mineral Board be subsequently modified, cancelled or abrogated due to the existence of conflicting leases, operating agreements, private claims or other future obligations or conditions which may affect all or any portion of the leased Tract, it shall not relieve the Lessee of the obligation to pay any bonus due thereon to the Louisiana State Mineral Board, nor shall the Louisiana State Mineral Board be obligated to refund any consideration paid by the Lessor prior to such modification, cancellation, or abrogation, including, but not limited to, bonuses, rentals and royalties.

Applicant: JCS RESOURCES, L.L.C.

Bidder	Cash Payment	Price/ Acre	Rental	Oil	Gas	Other



SABINE PARISH

T8N - R13W

P.O.B.

BAYOU SAN PATRICIA

0 2,000 Feet



**TRACT 41192 - Sabine Parish, Louisiana**

All of the lands now or formerly constituting the beds and bottoms of all water bodies of every nature and description as to which title is vested in the State of Louisiana, together with all islands arising therein and other lands formed by accretion or by reliction, where allowed by law, excepting tax adjudicated lands, and not presently under mineral lease on December 9, 2009, situated in Sabine Parish, Louisiana, and more particularly described as follows: Beginning at a point having Coordinates of X = 1,612,218.54 and Y = 373,171.60; thence South 88 degrees 59 minutes 27 seconds East 5,359.47 feet to a point having Coordinates of X = 1,617,577.17 and Y = 373,077.21; thence South 00 degrees 22 minutes 37 seconds West 5,346.91 feet to a point having Coordinates of X = 1,617,542.00 and Y = 367,730.42; thence North 89 degrees 50 minutes 31 seconds West 5,368.58 feet to a point having Coordinates of X = 1,612,173.44 and Y = 367,745.22; thence North 00 degrees 28 minutes 34 seconds East 5,426.56 feet to the point of beginning, containing approximately **7 acres**, all as more particularly outlined on a plat on file in the Office of Mineral Resources, Department of Natural Resources. All bearings, distances and coordinates are based on Louisiana Coordinate System of 1927, (North or South Zone), where applicable.

NOTE: The above description of the Tract nominated for lease has been provided and corrected, where required, exclusively by the nomination party. Any mineral lease selected from this Tract and awarded by the Louisiana State Mineral Board shall be without warranty of any kind, either express, implied, or statutory, including, but not limited to, the implied warranties of merchantability and fitness for a particular purpose. Should the mineral lease awarded by the Louisiana State Mineral Board be subsequently modified, cancelled or abrogated due to the existence of conflicting leases, operating agreements, private claims or other future obligations or conditions which may affect all or any portion of the leased Tract, it shall not relieve the Lessee of the obligation to pay any bonus due thereon to the Louisiana State Mineral Board, nor shall the Louisiana State Mineral Board be obligated to refund any consideration paid by the Lessor prior to such modification, cancellation, or abrogation, including, but not limited to, bonuses, rentals and royalties.

Bidder	Cash Payment	Price/ Acre	Rental	Oil	Gas	Other

Applicant: JCS RESOURCES, L.L.C.



SABINE PARISH

T8N - R13W

BAYOU SAN PATRICIA

P.O.B.

T8N - R14W

0 2,000 Feet



**TRACT 41193 - Sabine Parish, Louisiana**

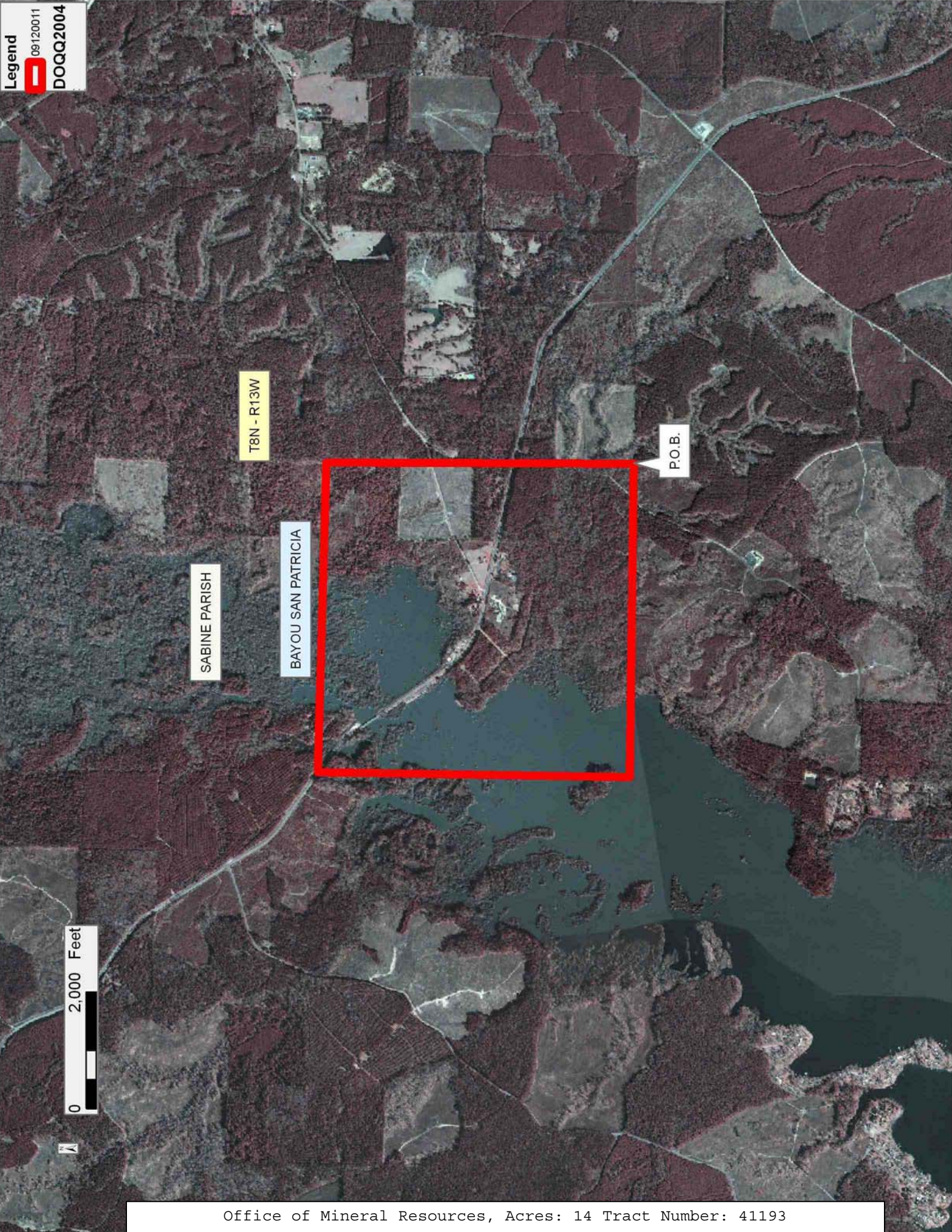
All of the lands now or formerly constituting the beds and bottoms of all water bodies of every nature and description as to which title is vested in the State of Louisiana, together with all islands arising therein and other lands formed by accretion or by reliction, where allowed by law, excepting tax adjudicated lands, and not presently under mineral lease on December 9, 2009, situated in Sabine Parish, Louisiana, and more particularly described as follows: Beginning at a point having Coordinates of X = 1,622,912.23 and Y = 367,715.61; thence North 89 degrees 50 minutes 31 seconds West 5,370.26 feet to a point having Coordinates of X = 1,617,542.00 and Y = 367,730.42; thence North 00 degrees 22 minutes 37 seconds East 5,346.91 feet to a point having Coordinates of X = 1,617,577.17 and Y = 373,077.21; thence South 88 degrees 59 minutes 27 seconds East 5,302.66 feet to a point having Coordinates of X = 1,622,879.01 and Y = 372,983.82; thence South 00 degrees 21 minutes 41 seconds East 5,268.32 feet to the point of beginning, containing approximately **14 acres**, all as more particularly outlined on a plat on file in the Office of Mineral Resources, Department of Natural Resources. All bearings, distances and coordinates are based on Louisiana Coordinate System of 1927, (North or South Zone), where applicable.

NOTE: The above description of the Tract nominated for lease has been provided and corrected, where required, exclusively by the nomination party. Any mineral lease selected from this Tract and awarded by the Louisiana State Mineral Board shall be without warranty of any kind, either express, implied, or statutory, including, but not limited to, the implied warranties of merchantability and fitness for a particular purpose. Should the mineral lease awarded by the Louisiana State Mineral Board be subsequently modified, cancelled or abrogated due to the existence of conflicting leases, operating agreements, private claims or other future obligations or conditions which may affect all or any portion of the leased Tract, it shall not relieve the Lessee of the obligation to pay any bonus due thereon to the Louisiana State Mineral Board, nor shall the Louisiana State Mineral Board be obligated to refund any consideration paid by the Lessor prior to such modification, cancellation, or abrogation, including, but not limited to, bonuses, rentals and royalties.

Bidder	Cash Payment	Price/ Acre	Rental	Oil	Gas	Other

Applicant: JCS RESOURCES, L.L.C.







**TRACT 41194 - Sabine Parish, Louisiana**

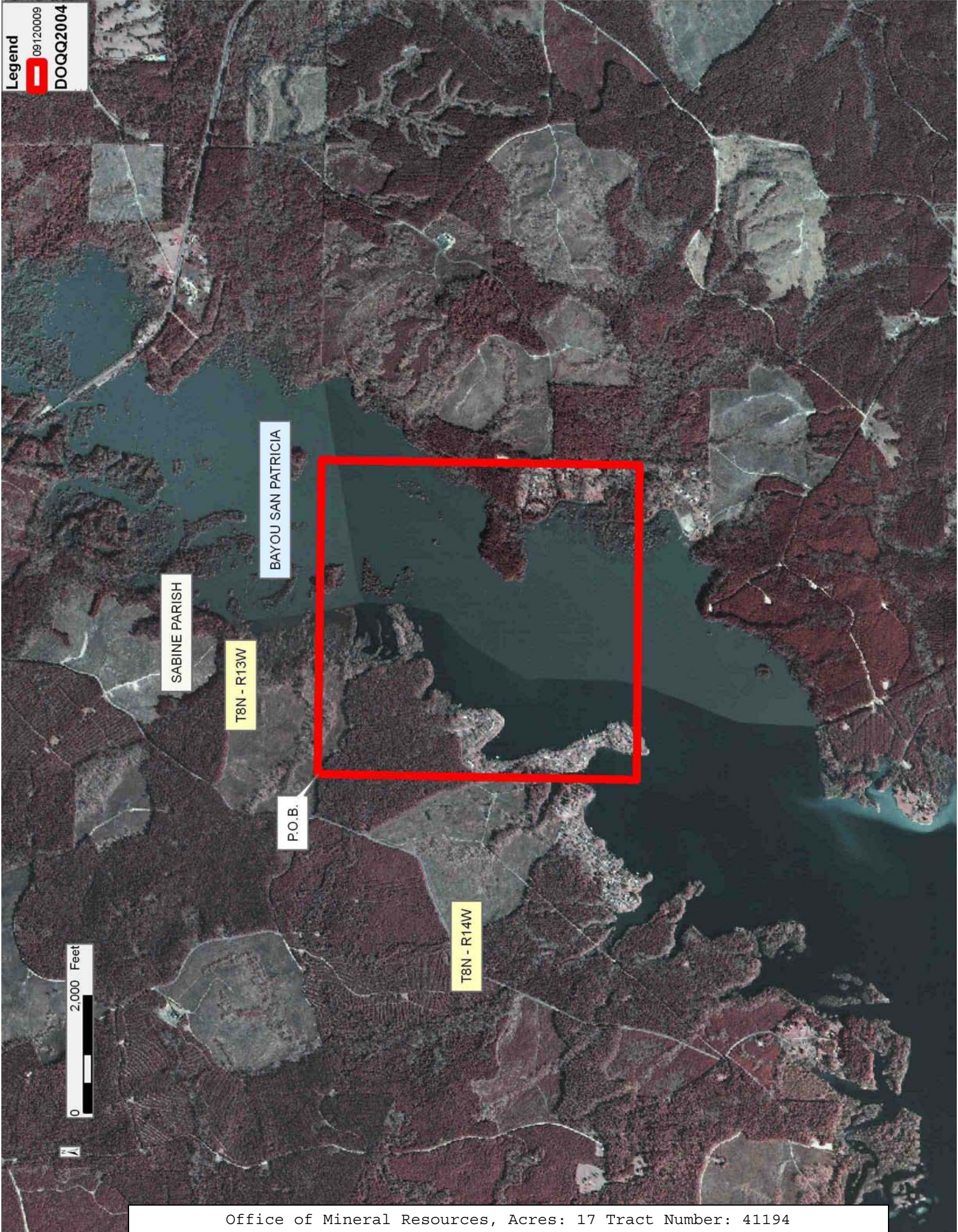
All of the lands now or formerly constituting the beds and bottoms of all water bodies of every nature and description as to which title is vested in the State of Louisiana, together with all islands arising therein and other lands formed by accretion or by reliction, where allowed by law, excepting tax adjudicated lands, and not presently under mineral lease on December 9, 2009, situated in Sabine Parish, Louisiana, and more particularly described as follows: Beginning at a point having Coordinates of X = 1,612,173.44 and Y = 367,745.22; thence South 89 degrees 50 minutes 31 seconds East 5,368.58 feet to a point having Coordinates of X = 1,617,542.00 and Y = 367,730.42; thence South 00 degrees 22 minutes 37 seconds West 5,431.77 feet to a point having Coordinates of X = 1,617,506.25 and Y = 362,298.76; thence South 89 degrees 55 minutes 35 seconds West 5,378.15 feet to a point having Coordinates of X = 1,612,128.11 and Y = 362,291.86; thence North 00 degrees 28 minutes 35 seconds East 5,453.55 feet to the point of beginning, containing approximately **17 acres**, all as more particularly outlined on a plat on file in the Office of Mineral Resources, Department of Natural Resources. All bearings, distances and coordinates are based on Louisiana Coordinate System of 1927, (North or South Zone), where applicable.

NOTE: The above description of the Tract nominated for lease has been provided and corrected, where required, exclusively by the nomination party. Any mineral lease selected from this Tract and awarded by the Louisiana State Mineral Board shall be without warranty of any kind, either express, implied, or statutory, including, but not limited to, the implied warranties of merchantability and fitness for a particular purpose. Should the mineral lease awarded by the Louisiana State Mineral Board be subsequently modified, cancelled or abrogated due to the existence of conflicting leases, operating agreements, private claims or other future obligations or conditions which may affect all or any portion of the leased Tract, it shall not relieve the Lessee of the obligation to pay any bonus due thereon to the Louisiana State Mineral Board, nor shall the Louisiana State Mineral Board be obligated to refund any consideration paid by the Lessor prior to such modification, cancellation, or abrogation, including, but not limited to, bonuses, rentals and royalties.

Bidder	Cash Payment	Price/Acre	Rental	Oil	Gas	Other

Applicant: JCS RESOURCES, L.L.C.







**TRACT 41195 - Sabine Parish, Louisiana**

All of the lands now or formerly constituting the beds and bottoms of all water bodies of every nature and description as to which title is vested in the State of Louisiana, together with all islands arising therein and other lands formed by accretion or by reliction, where allowed by law, excepting tax adjudicated lands, and not presently under mineral lease on December 9, 2009, situated in Sabine Parish, Louisiana, and more particularly described as follows: Beginning at a point having Coordinates of X = 1,612,128.11 and Y = 362,291.86; thence North 89 degrees 55 minutes 35 seconds East 5,378.15 feet to a point having Coordinates of X = 1,617,506.25 and Y = 362,298.76; thence South 00 degrees 21 minutes 35 seconds West 5,306.58 feet to a point having Coordinates of X = 1,617,472.94 and Y = 356,992.29; thence North 89 degrees 44 minutes 32 seconds West 5,388.76 feet to a point having Coordinates of X = 1,612,084.24 and Y = 357,016.55; thence North 00 degrees 28 minutes 35 seconds East 5,275.50 feet to the point of beginning, containing approximately **5 acres**, all as more particularly outlined on a plat on file in the Office of Mineral Resources, Department of Natural Resources. All bearings, distances and coordinates are based on Louisiana Coordinate System of 1927, (North or South Zone), where applicable.

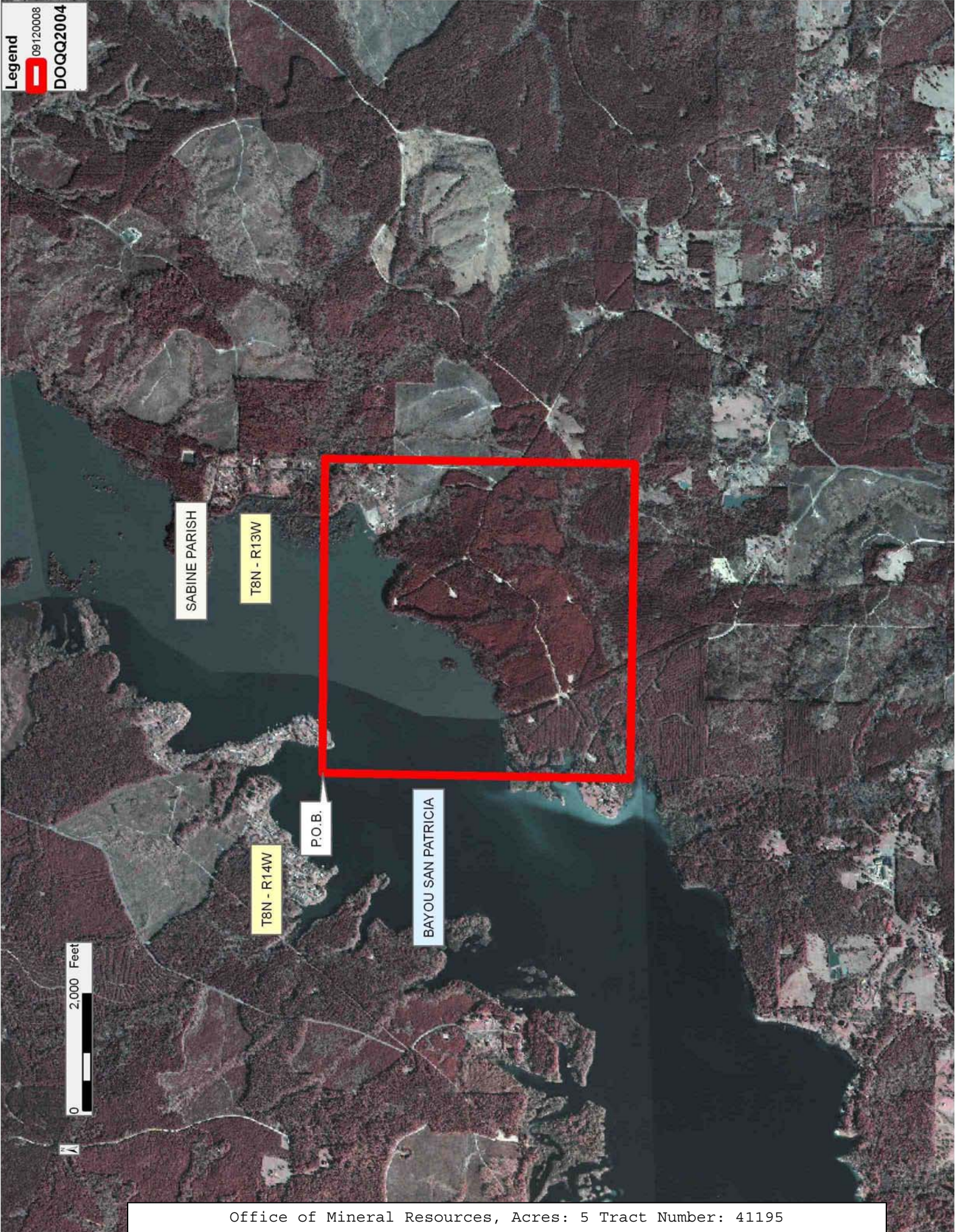
NOTE: The above description of the Tract nominated for lease has been provided and corrected, where required, exclusively by the nomination party. Any mineral lease selected from this Tract and awarded by the Louisiana State Mineral Board shall be without warranty of any kind, either express, implied, or statutory, including, but not limited to, the implied warranties of merchantability and fitness for a particular purpose. Should the mineral lease awarded by the Louisiana State Mineral Board be subsequently modified, cancelled or abrogated due to the existence of conflicting leases, operating agreements, private claims or other future obligations or conditions which may affect all or any portion of the leased Tract, it shall not relieve the Lessee of the obligation to pay any bonus due thereon to the Louisiana State Mineral Board, nor shall the Louisiana State Mineral Board be obligated to refund any consideration paid by the Lessor prior to such modification, cancellation, or abrogation, including, but not limited to, bonuses, rentals and royalties.

Bidder	Cash Payment	Price/Acre	Rental	Oil	Gas	Other



Applicant: JCS RESOURCES, L.L.C.







**TRACT 41196 - Sabine Parish, Louisiana**

All of the lands now or formerly constituting the beds and bottoms of all water bodies of every nature and description as to which title is vested in the State of Louisiana, together with all islands arising therein and other lands formed by accretion or by reliction, where allowed by law, excepting tax adjudicated lands, and not presently under mineral lease on December 9, 2009, situated in Sabine Parish, Louisiana, and more particularly described as follows: Beginning at a point having Coordinates of X = 1,606,713.06 and Y = 362,284.95; thence North 89 degrees 55 minutes 37 seconds East 5,415.06 feet to a point having Coordinates of X = 1,612,128.11 and Y = 362,291.86; thence South 00 degrees 28 minutes 35 seconds West 5,275.50 feet to a point having Coordinates of X = 1,612,084.24 and Y = 357,016.55; thence North 89 degrees 44 minutes 30 seconds West 5,456.28 feet to a point having Coordinates of X = 1,606,628.01 and Y = 357,041.14; thence North 00 degrees 55 minutes 45 seconds East 5,244.50 feet to the point of beginning, containing approximately **16 acres**, all as more particularly outlined on a plat on file in the Office of Mineral Resources, Department of Natural Resources. All bearings, distances and coordinates are based on Louisiana Coordinate System of 1927, (North or South Zone), where applicable.

NOTE: The above description of the Tract nominated for lease has been provided and corrected, where required, exclusively by the nomination party. Any mineral lease selected from this Tract and awarded by the Louisiana State Mineral Board shall be without warranty of any kind, either express, implied, or statutory, including, but not limited to, the implied warranties of merchantability and fitness for a particular purpose. Should the mineral lease awarded by the Louisiana State Mineral Board be subsequently modified, cancelled or abrogated due to the existence of conflicting leases, operating agreements, private claims or other future obligations or conditions which may affect all or any portion of the leased Tract, it shall not relieve the Lessee of the obligation to pay any bonus due thereon to the Louisiana State Mineral Board, nor shall the Louisiana State Mineral Board be obligated to refund any consideration paid by the Lessor prior to such modification, cancellation, or abrogation, including, but not limited to, bonuses, rentals and royalties.

Bidder	Cash Payment	Price/ Acre	Rental	Oil	Gas	Other

Applicant: JCS RESOURCES, L.L.C.





**TRACT 41197 - Sabine Parish, Louisiana**

All of the lands now or formerly constituting the beds and bottoms of all water bodies of every nature and description as to which title is vested in the State of Louisiana, together with all islands arising therein and other lands formed by accretion or by reliction, where allowed by law, excepting tax adjudicated lands, and not presently under mineral lease on December 9, 2009, situated in Sabine Parish, Louisiana, and more particularly described as follows: Beginning at a point having Coordinates of X = 1,606,628.01 and Y = 357,041.14; thence South 89 degrees 44 minutes 30 seconds East 5,456.28 feet to a point having Coordinates of X = 1,612,084.24 and Y = 357,016.55; thence South 00 degrees 58 minutes 07 seconds West 5,344.34 feet to a point having Coordinates of X = 1,611,993.90 and Y = 351,672.97; thence North 89 degrees 11 minutes 54 seconds West 5,483.01 feet to a point having Coordinates of X = 1,606,511.42 and Y = 351,749.69; thence North 01 degrees 15 minutes 44 seconds East 5,292.74 feet to the point of beginning, containing approximately **6 acres**, all as more particularly outlined on a plat on file in the Office of Mineral Resources, Department of Natural Resources. All bearings, distances and coordinates are based on Louisiana Coordinate System of 1927, (North or South Zone), where applicable.

NOTE: The above description of the Tract nominated for lease has been provided and corrected, where required, exclusively by the nomination party. Any mineral lease selected from this Tract and awarded by the Louisiana State Mineral Board shall be without warranty of any kind, either express, implied, or statutory, including, but not limited to, the implied warranties of merchantability and fitness for a particular purpose. Should the mineral lease awarded by the Louisiana State Mineral Board be subsequently modified, cancelled or abrogated due to the existence of conflicting leases, operating agreements, private claims or other future obligations or conditions which may affect all or any portion of the leased Tract, it shall not relieve the Lessee of the obligation to pay any bonus due thereon to the Louisiana State Mineral Board, nor shall the Louisiana State Mineral Board be obligated to refund any consideration paid by the Lessor prior to such modification, cancellation, or abrogation, including, but not limited to, bonuses, rentals and royalties.

Bidder	Cash Payment	Price/ Acre	Rental	Oil	Gas	Other



Applicant: JCS RESOURCES, L.L.C.





**TRACT 41198 - Jefferson Davis Parish, Louisiana**

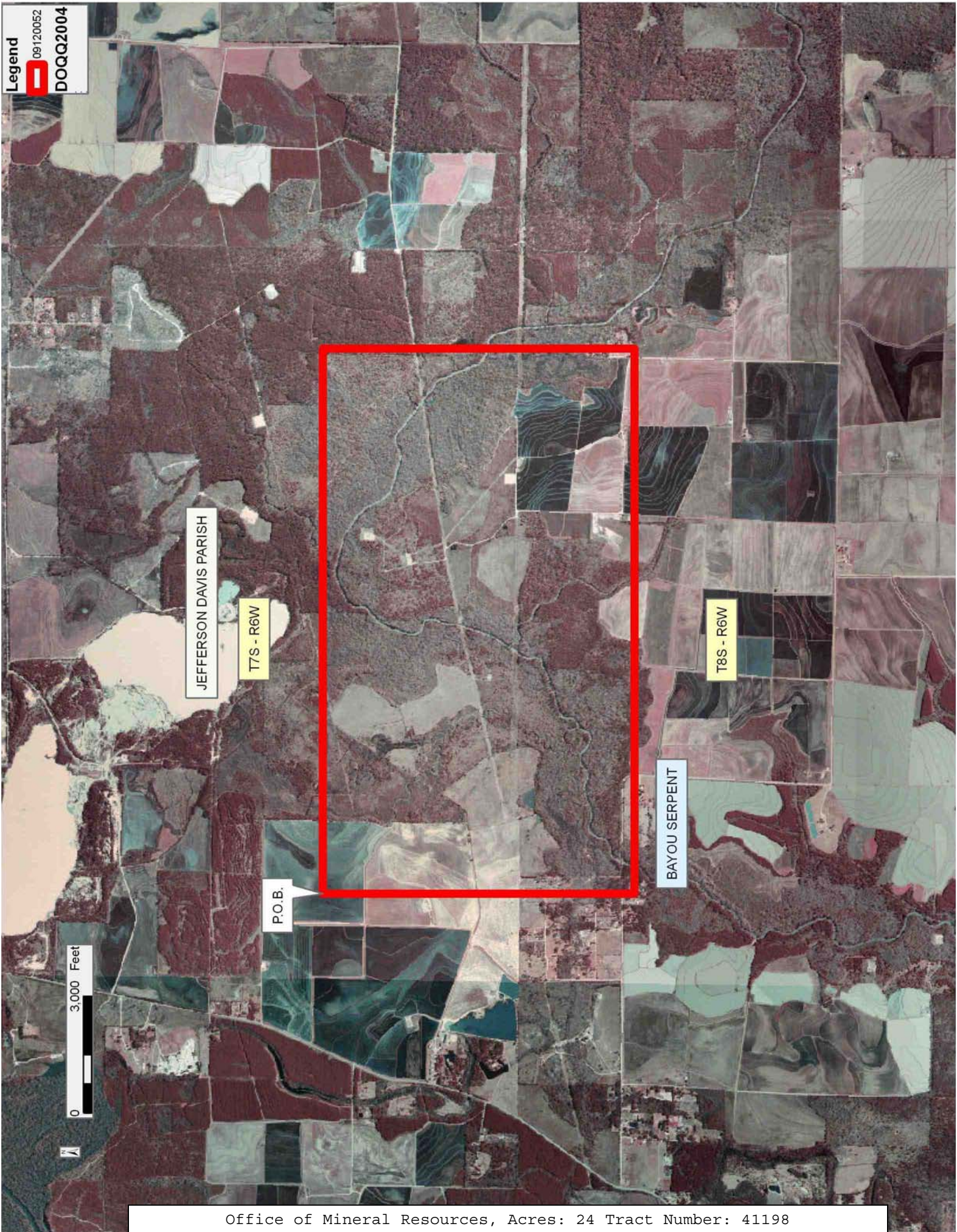
All of the lands now or formerly constituting the beds and bottoms of all water bodies of every nature and description as to which title is vested in the State of Louisiana, together with all islands arising therein and other lands formed by accretion or by reliction, where allowed by law, excepting tax adjudicated lands, and not presently under mineral lease on December 9, 2009, situated in Jefferson Davis Parish, Louisiana, and more particularly described as follows: Beginning at a point having Coordinates of X = 1,477,875.00 and Y = 639,600.00; thence East 14,000.00 feet to a point having Coordinates of X = 1,491,875.00 and Y = 639,600.00; thence South 8,000.00 feet to a point having Coordinates of X = 1,491,875.00 and Y = 631,600.00; thence West 14,000.00 feet to a point having Coordinates of X = 1,477,875.00 and Y = 631,600.00; thence North 8,000.00 feet to the point of beginning containing **24 acres**, all as more particularly outlined on a plat on file in the Office of Mineral Resources, Department of Natural Resources. All bearings, distances and coordinates are based on Louisiana Coordinate System of 1927, (North or South Zone), where applicable.

NOTE: The above description of the Tract nominated for lease has been provided and corrected, where required, exclusively by the nomination party. Any mineral lease selected from this Tract and awarded by the Louisiana State Mineral Board shall be without warranty of any kind, either express, implied, or statutory, including, but not limited to, the implied warranties of merchantability and fitness for a particular purpose. Should the mineral lease awarded by the Louisiana State Mineral Board be subsequently modified, cancelled or abrogated due to the existence of conflicting leases, operating agreements, private claims or other future obligations or conditions which may affect all or any portion of the leased Tract, it shall not relieve the Lessee of the obligation to pay any bonus due thereon to the Louisiana State Mineral Board, nor shall the Louisiana State Mineral Board be obligated to refund any consideration paid by the Lessor prior to such modification, cancellation, or abrogation, including, but not limited to, bonuses, rentals and royalties.

Applicant: WAINWRIGHT & BOYER LAND SERVICES, L.L.C.

Bidder	Cash Payment	Price/ Acre	Rental	Oil	Gas	Other







**TRACT 41199 - Jefferson Davis Parish, Louisiana**

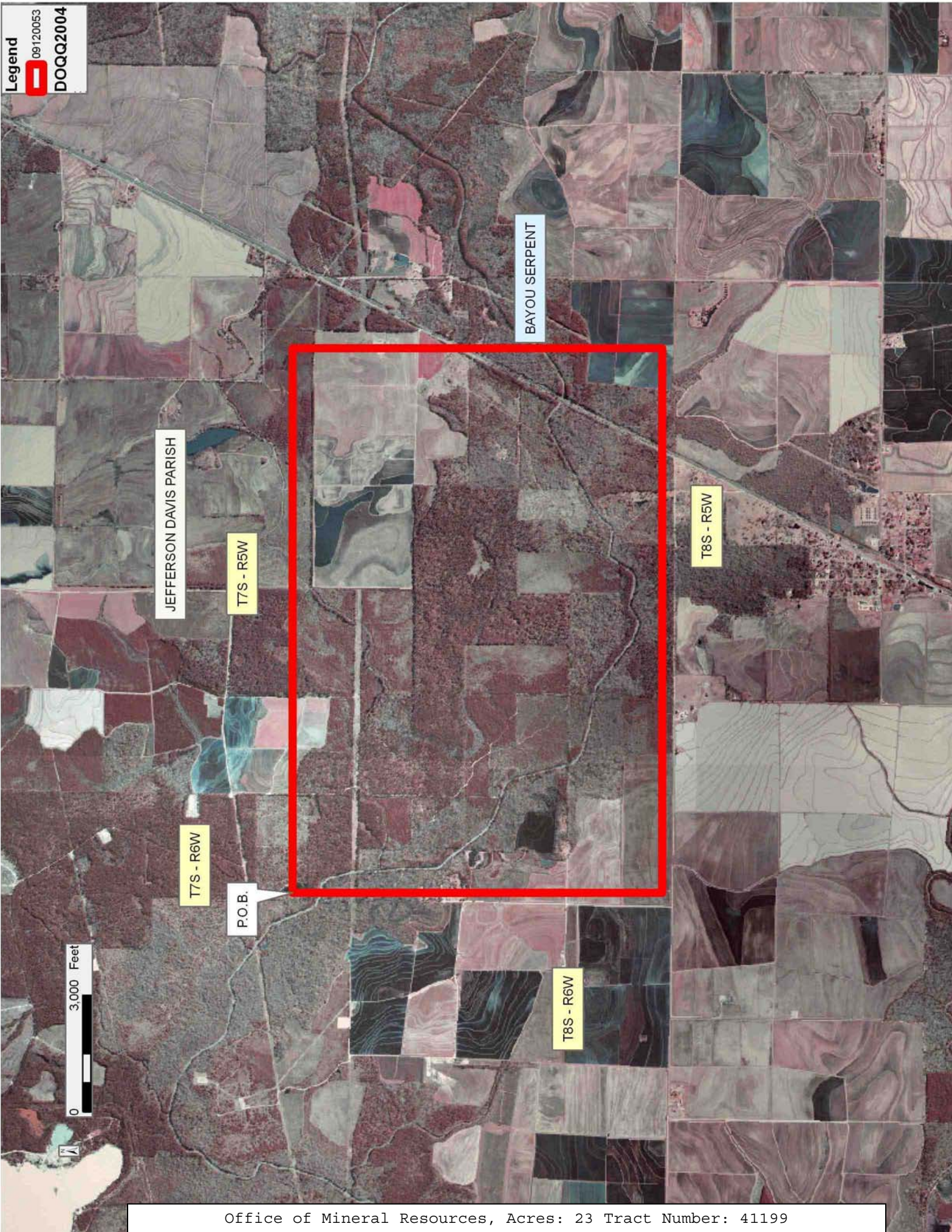
All of the lands now or formerly constituting the beds and bottoms of all water bodies of every nature and description as to which title is vested in the State of Louisiana, together with all islands arising therein and other lands formed by accretion or by reliction, where allowed by law, excepting tax adjudicated lands, and not presently under mineral lease on December 9, 2009, situated in Jefferson Davis Parish, Louisiana, and more particularly described as follows: Beginning at a point having Coordinates of X = 1,491,875.00 and Y = 636,100.00; thence East 14,000.00 feet to a point having Coordinates of X = 1,505,875.00 and Y = 636,100.00; thence South 9,500.00 feet to a point having Coordinates of X = 1,505,875.00 and Y = 626,600.00; thence West 14,000.00 feet to a point having Coordinates of X = 1,491,875.00 and Y = 626,600.00; thence North 9,500.00 feet to the point of beginning containing **23 acres**, all as more particularly outlined on a plat on file in the Office of Mineral Resources, Department of Natural Resources. All bearings, distances and coordinates are based on Louisiana Coordinate System of 1927, (North or South Zone), where applicable.

NOTE: The above description of the Tract nominated for lease has been provided and corrected, where required, exclusively by the nomination party. Any mineral lease selected from this Tract and awarded by the Louisiana State Mineral Board shall be without warranty of any kind, either express, implied, or statutory, including, but not limited to, the implied warranties of merchantability and fitness for a particular purpose. Should the mineral lease awarded by the Louisiana State Mineral Board be subsequently modified, cancelled or abrogated due to the existence of conflicting leases, operating agreements, private claims or other future obligations or conditions which may affect all or any portion of the leased Tract, it shall not relieve the Lessee of the obligation to pay any bonus due thereon to the Louisiana State Mineral Board, nor shall the Louisiana State Mineral Board be obligated to refund any consideration paid by the Lessor prior to such modification, cancellation, or abrogation, including, but not limited to, bonuses, rentals and royalties.

Applicant: WAINWRIGHT & BOYER LAND SERVICES, L.L.C.

Bidder	Cash Payment	Price/ Acre	Rental	Oil	Gas	Other







**TRACT 41200 - Jefferson Davis Parish, Louisiana**

All of the lands now or formerly constituting the beds and bottoms of all water bodies of every nature and description as to which title is vested in the State of Louisiana, together with all islands arising therein and other lands formed by accretion or by reliction, where allowed by law, excepting tax adjudicated lands, and not presently under mineral lease on December 9, 2009, situated in Jefferson Davis Parish, Louisiana, and more particularly described as follows: Beginning at a point having Coordinates of X = 1,471,900.00 and Y = 631,600.00; thence East 8,000.00 feet to a point having Coordinates of X = 1,479,900.00 and Y = 631,600.00; thence South 14,000.00 feet to a point having Coordinates of X = 1,479,900.00 and Y = 617,600.00; thence West 8,000.00 feet to a point having Coordinates of X = 1,471,900.00 and Y = 617,600.00; thence North 14,000.00 feet to the point of beginning, **LESS AND EXCEPT** all of State Lease No. 16505, as amended, that lies within the above described tract, being more fully described as follows: Commencing at the point of beginning of the above described nominated tract having Coordinates of X = 1,471,900.00 and Y = 631,600.00; thence South 33 degrees 40 minutes 29 seconds East 5,714.60 feet to the Northwest corner of said State Lease No. 16505 having Coordinates of X = 1,475,068.62 and Y = 626,844.32; thence along the boundary of said State Lease No. 16505 the following courses: South 89 degrees 02 minutes 07 seconds East 2,404.42 feet to a point having Coordinates of X = 1,477,472.70 and Y = 626,803.84; South 00 degrees 33 minutes 31 seconds West 2,145.26 feet to a point having Coordinates of X = 1,477,451.78 and Y = 624,658.68; South 89 degrees 44 minutes 25 seconds East 963.82 feet to a point having Coordinates of X = 1,478,415.59 and Y = 624,654.31; South 00 degrees 49 minutes 59 seconds West 1,936.81 feet to a point having Coordinates of X = 1,478,387.43 and Y = 622,717.70; North 89 degrees 22 minutes 20 seconds West 3,366.89 feet to a point having Coordinates of X = 1,475,020.75 and Y = 622,754.59 and North 00 degrees 40 minutes 14 seconds East 4,090.00 feet back to its Northwest corner; the above described nominated tract contains approximately **13 acres**, all as more particularly outlined on a plat on file in the Office of Mineral Resources, Department of Natural Resources. All bearings, distances and coordinates are based on Louisiana Coordinate System of 1927, (North or South Zone), where applicable.

NOTE: The above description of the Tract nominated for lease has been provided and corrected, where required, exclusively by the nomination party. Any mineral lease selected from this Tract and awarded by the Louisiana State Mineral Board shall be without warranty of any kind, either express, implied, or statutory, including, but not limited to, the implied warranties of merchantability and fitness for a particular purpose. Should the mineral lease awarded by the Louisiana State Mineral Board be subsequently modified, cancelled or abrogated due to the existence of conflicting leases, operating agreements, private claims or other future obligations or conditions which may affect all or any portion of the leased Tract, it shall not relieve the Lessee of the obligation to pay any bonus due thereon to the Louisiana State Mineral Board, nor shall

the Louisiana State Mineral Board be obligated to refund any consideration paid by the Lessor prior to such modification, cancellation, or abrogation, including, but not limited to, bonuses, rentals and royalties.

Applicant: WAINWRIGHT & BOYER LAND SERVICES, L.L.C.

Bidder	Cash Payment	Price/ Acre	Rental	Oil	Gas	Other



**Legend**  
09120051  
Active\_Leases  
DOQQ2004

T7S - R6W

JEFFERSON DAVIS PARISH

BAYOU SERPENT

P.O.B.

SL 16505

T8S - R6W

