

**TRACT 40681 - Lafourche Parish, Louisiana**

All of the lands now or formerly constituting the beds and bottoms of all water bodies of every nature and description as to which title is vested in the State of Louisiana, together with all islands arising therein and other lands formed by accretion or by reliction, where allowed by law, excepting tax adjudicated lands, and not presently under mineral lease on December 10, 2008, situated in Lafourche Parish, Louisiana, and more particularly described as follows: Point of Beginning having Coordinates of X = 2,336,500.00 and Y = 218,400.00; thence East approximately 9,769 feet to a point on the West line of State Lease No. 1908, as amended; thence along the boundary of said State Lease No. 1908 the following courses: Southeasterly and Easterly to its Southeast corner, also being the Northwest corner of State Lease No. 19647; thence along the boundary of said State Lease No. 19647 the following courses: Southeasterly approximately 4,663 feet to a point having Coordinates of X = 2,352,207.71 and Y = 212,959.79 and South 00 Degrees 51 Minutes 26 Seconds East 559.86 feet to a point having Coordinates of X = 2,352,216.08 and Y = 212,400.00; thence West 15,716.08 feet to a point having Coordinates of X = 2,336,500.00 and Y = 212,400.00; thence North 6,000.00 feet to the point of beginning, (This lease includes only waterbottoms claimed and owned by the state and specifically excludes any land which the state may claim or own and to which the mineral rights are vested in the state), containing approximately **1,026 acres**, all as more particularly outlined on a plat on file in the Office of Mineral Resources, Department of Natural Resources. All bearings, distances and coordinates are based on Louisiana Coordinate System of 1927, (North or South Zone), where applicable.

NOTE: The above description of the Tract nominated for lease has been provided and corrected, where required, exclusively by the nomination party. Any mineral lease selected from this Tract and awarded by the Louisiana State Mineral Board shall be without warranty of any kind, either express, implied, or statutory, including, but not limited to, the implied warranties of merchantability and fitness for a particular purpose. Should the mineral lease awarded by the Louisiana State Mineral Board be subsequently modified, cancelled or abrogated due to the existence of conflicting leases, operating agreements, private claims or other future obligations or conditions which may affect all or any portion of the leased Tract, it shall not relieve the Lessee of the obligation to pay any bonus due thereon to the Louisiana State Mineral Board, nor shall the Louisiana State Mineral Board be obligated to refund any consideration paid by the Lessor prior to such modification, cancellation, or abrogation, including, but not limited to, bonuses, rentals and royalties.

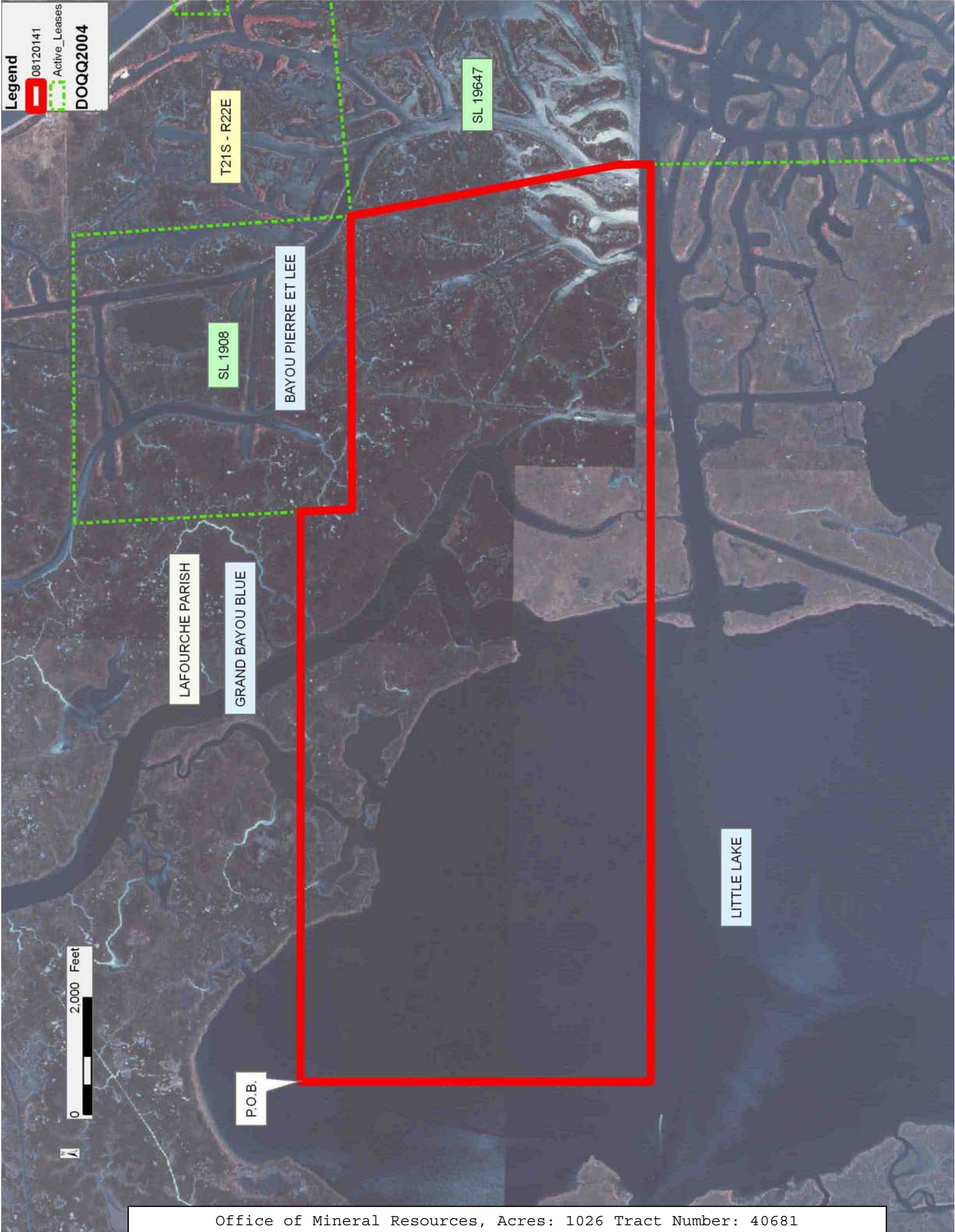
NOTE: The State of Louisiana does hereby reserve, and this lease shall be subject to, the imprescriptible right of surface use in the nature of a servitude in favor of the Department of Natural Resources, including its Offices and Commissions, for the sole purpose of implementing, constructing, servicing and maintaining approved coastal zone management and/or restoration projects. Utilization of any and all rights derived under this lease by the mineral lessee, its agents, successors or assigns,

shall not interfere with nor hinder the reasonable surface use by the Department of Natural Resources, its Offices or Commissions, as herein above reserved.

Applicant: SPECTER EXPLORATION, INC.

Bidder	Cash Payment	Price/Acre	Rental	Oil	Gas	Other

**Legend**  
08120141  
Active\_Leases  
DOQQ2004



**TRACT 40682 - Terrebonne Parish, Louisiana**

All of the lands now or formerly constituting the beds and bottoms of all water bodies of every nature and description as to which title is vested in the State of Louisiana, together with all islands arising therein and other lands formed by accretion or by reliction, where allowed by law, excepting tax adjudicated lands, and not presently under mineral lease on December 10, 2008, situated in Terrebonne Parish, Louisiana, and more particularly described as follows: Beginning at the Easternmost corner of State Lease No. 19507 having Coordinates of X = 2,264,632.10 and Y = 216,840.70; thence East 4,554.17 feet to a point having Coordinates of X = 2,269,186.27 and Y = 216,840.70; thence South 4,697.70 feet to a point having Coordinates of X = 2,269,186.27 and Y = 212,143.00; thence West 6,953.04 feet to a point on the Eastern boundary of State Lease No. 19506 having Coordinates of X = 2,262,233.23 and Y = 212,143.00; thence along the boundary of said State Lease No. 19506 the following courses and distances: North 22 degrees 22 minutes 37 seconds East 1,106.85 feet to its Easternmost corner having Coordinates of X = 2,262,654.60 and Y = 213,166.50 and North 74 degrees 57 minutes 42 seconds West 686.41 feet to the Southernmost Southeast corner of State Lease No. 19508 having Coordinates of X = 2,261,991.70 and Y = 213,344.60; thence North 36 degrees 56 minutes 14 seconds East 1,988.38 feet along the Southeast boundary of said State Lease No. 19508 to its Easternmost corner, also being the Southeast corner of said State Lease No. 19507 having Coordinates of X = 2,263,186.60 and Y = 214,933.90; thence North 37 degrees 09 minutes 54 seconds East 2,392.77 feet along the Southeast boundary of said State Lease No. 19507 to the point of beginning, containing approximately **658.17 acres**, all as more particularly outlined on a plat on file in the Office of Mineral Resources, Department of Natural Resources. All bearings, distances and coordinates are based on Louisiana Coordinate System of 1927, (North or South Zone), where applicable.

NOTE: The above description of the Tract nominated for lease has been provided and corrected, where required, exclusively by the nomination party. Any mineral lease selected from this Tract and awarded by the Louisiana State Mineral Board shall be without warranty of any kind, either express, implied, or statutory, including, but not limited to, the implied warranties of merchantability and fitness for a particular purpose. Should the mineral lease awarded by the Louisiana State Mineral Board be subsequently modified, cancelled or abrogated due to the existence of conflicting leases, operating agreements, private claims or other future obligations or conditions which may affect all or any portion of the leased Tract, it shall not relieve the Lessee of the obligation to pay any bonus due thereon to the Louisiana State Mineral Board, nor shall the Louisiana State Mineral Board be obligated to refund any consideration paid by the Lessor prior to such modification, cancellation, or abrogation, including, but not limited to, bonuses, rentals and royalties.

NOTE: The State of Louisiana does hereby reserve, and this lease shall be subject to, the imprescriptible right of surface use in the nature of a servitude in favor of the Department of Natural Resources, including its Offices and Commissions, for the sole purpose of implementing, constructing, servicing and maintaining approved coastal zone management and/or restoration projects. Utilization of any and all rights derived under this lease by the mineral lessee, its agents, successors or assigns, shall not interfere with nor hinder the reasonable surface use by the Department of Natural Resources, its Offices or Commissions, as herein above reserved.

Applicant: THEOPHILUS OIL, GAS & LAND SERVICES, LLC

Bidder	Cash Payment	Price/Acre	Rental	Oil	Gas	Other

**Legend**  
08120102  
Active\_Leases



TERREBONNE PARISH

LAKE BARRE

P.O.B.

SL 19507

SL 19508

SL 19506

**TRACT 40683 - Terrebonne Parish, Louisiana**

All of the lands now or formerly constituting the beds and bottoms of all water bodies of every nature and description as to which title is vested in the State of Louisiana, together with all islands arising therein and other lands formed by accretion or by reliction, where allowed by law, excepting tax adjudicated lands, and not presently under mineral lease on December 10, 2008, situated in Terrebonne Parish, Louisiana, and more particularly described as follows: Beginning at a point having Coordinates of X = 2,269,186.27 and Y = 216,840.70; thence East 5,272.93 feet to a point having Coordinates of X = 2,274,459.20 and Y = 216,840.70; thence South 6,781.25 feet to a point on the North boundary of State Lease No. 199, as amended having Coordinates of X = 2,274,459.20 and Y = 210,059.45; thence along the North boundary of said State Lease No. 199 the following courses and distances: South 89 degrees 34 minutes 50 seconds West 3,676.12 feet to a point having Coordinates of X = 2,270,783.18 and Y = 210,032.54, South 00 degrees 25 minutes 11 seconds East 946.17 feet to a point having Coordinates of X = 2,270,790.11 and Y = 209,086.40 and South 89 degrees 34 minutes 50 seconds West 1,603.88 feet to a point having Coordinates of X = 2,269,186.27 and Y = 209,074.66; thence North 7,766.04 feet to the point of beginning, containing approximately **857.97 acres**, all as more particularly outlined on a plat on file in the Office of Mineral Resources, Department of Natural Resources. All bearings, distances and coordinates are based on Louisiana Coordinate System of 1927, (North or South Zone), where applicable.

NOTE: The above description of the Tract nominated for lease has been provided and corrected, where required, exclusively by the nomination party. Any mineral lease selected from this Tract and awarded by the Louisiana State Mineral Board shall be without warranty of any kind, either express, implied, or statutory, including, but not limited to, the implied warranties of merchantability and fitness for a particular purpose. Should the mineral lease awarded by the Louisiana State Mineral Board be subsequently modified, cancelled or abrogated due to the existence of conflicting leases, operating agreements, private claims or other future obligations or conditions which may affect all or any portion of the leased Tract, it shall not relieve the Lessee of the obligation to pay any bonus due thereon to the Louisiana State Mineral Board, nor shall the Louisiana State Mineral Board be obligated to refund any consideration paid by the Lessor prior to such modification, cancellation, or abrogation, including, but not limited to, bonuses, rentals and royalties.

NOTE: The State of Louisiana does hereby reserve, and this lease shall be subject to, the imprescriptible right of surface use in the nature of a servitude in favor of the Department of Natural Resources, including its Offices and Commissions, for the sole purpose of implementing, constructing, servicing and maintaining approved coastal zone management and/or restoration projects. Utilization of any and all rights derived under this lease by the mineral lessee, its agents, successors or assigns, shall not interfere with nor hinder the reasonable surface use by the

Department of Natural Resources, its Offices or Commissions, as herein above reserved.

Applicant: THEOPHILUS OIL, GAS & LAND SERVICES, LLC

Bidder	Cash Payment	Price/Acre	Rental	Oil	Gas	Other



**Legend**  
08120105  
Active\_Leases

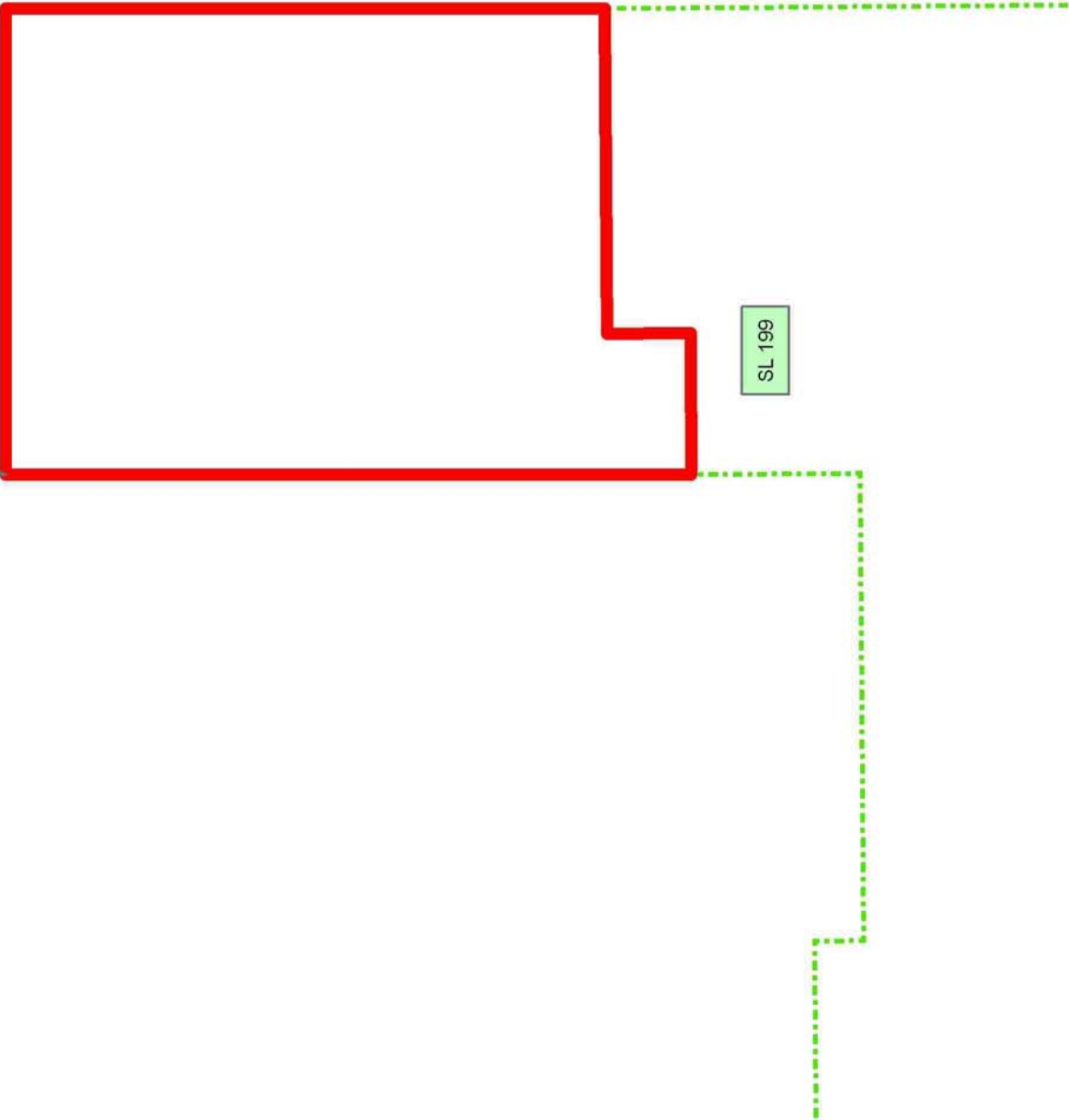


TERREBONNE PARISH

LAKE BARRE

P.O.B.

SL 199



**TRACT 40684 - Terrebonne Parish, Louisiana**

All of the lands now or formerly constituting the beds and bottoms of all water bodies of every nature and description as to which title is vested in the State of Louisiana, together with all islands arising therein and other lands formed by accretion or by reliction, where allowed by law, excepting tax adjudicated lands, and not presently under mineral lease on December 10, 2008, situated in Terrebonne Parish, Louisiana, and more particularly described as follows: Beginning at a point having Coordinates of X = 2,274,459.20 and Y = 216,840.70; thence East 4,788.00 feet to a point having Coordinates of X = 2,279,247.20 and Y = 216,840.70; thence South 6,781.25 feet to a point having Coordinates of X = 2,279,247.20 and Y = 210,059.45; thence West 4,788.00 feet to a Northeast corner of State Lease No. 199, as amended having Coordinates of X = 2,274,459.20 and Y = 210,059.45; thence North 6,781.25 feet to the point of beginning, containing approximately **745.38 acres**, all as more particularly outlined on a plat on file in the Office of Mineral Resources, Department of Natural Resources. All bearings, distances and coordinates are based on Louisiana Coordinate System of 1927, (North or South Zone), where applicable.

NOTE: The above description of the Tract nominated for lease has been provided and corrected, where required, exclusively by the nomination party. Any mineral lease selected from this Tract and awarded by the Louisiana State Mineral Board shall be without warranty of any kind, either express, implied, or statutory, including, but not limited to, the implied warranties of merchantability and fitness for a particular purpose. Should the mineral lease awarded by the Louisiana State Mineral Board be subsequently modified, cancelled or abrogated due to the existence of conflicting leases, operating agreements, private claims or other future obligations or conditions which may affect all or any portion of the leased Tract, it shall not relieve the Lessee of the obligation to pay any bonus due thereon to the Louisiana State Mineral Board, nor shall the Louisiana State Mineral Board be obligated to refund any consideration paid by the Lessor prior to such modification, cancellation, or abrogation, including, but not limited to, bonuses, rentals and royalties.

NOTE: The State of Louisiana does hereby reserve, and this lease shall be subject to, the imprescriptible right of surface use in the nature of a servitude in favor of the Department of Natural Resources, including its Offices and Commissions, for the sole purpose of implementing, constructing, servicing and maintaining approved coastal zone management and/or restoration projects. Utilization of any and all rights derived under this lease by the mineral lessee, its agents, successors or assigns, shall not interfere with nor hinder the reasonable surface use by the Department of Natural Resources, its Offices or Commissions, as herein above reserved.

Applicant: THEOPHILUS OIL, GAS & LAND SERVICES, LLC

Bidder	Cash Payment	Price/Acre	Rental	Oil	Gas	Other

**Legend**  
08120108  
Active\_Leases



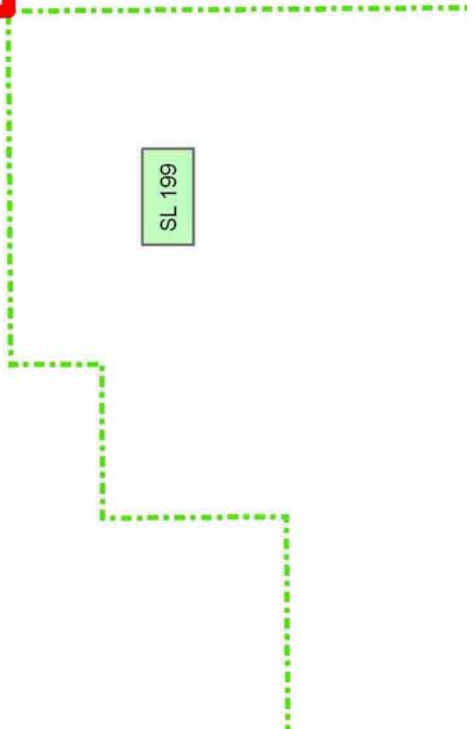
TERREBONNE PARISH

LAKE BARRE

P.O.B.



SL 199



**TRACT 40685 - Terrebonne Parish, Louisiana**

All of the lands now or formerly constituting the beds and bottoms of all water bodies of every nature and description as to which title is vested in the State of Louisiana, together with all islands arising therein and other lands formed by accretion or by reliction, where allowed by law, excepting tax adjudicated lands, and not presently under mineral lease on December 10, 2008, situated in Terrebonne Parish, Louisiana, and more particularly described as follows: Beginning at a point having Coordinates of X = 2,255,547.29 and Y = 213,954.70; thence East 4,809.81 feet to the Southwest corner of State Lease No. 19508, also being the Northwest corner of State Lease No. 19506 having Coordinates of X = 2,260,357.10 and Y = 213,954.70; thence South 38 degrees 29 minutes 45 seconds West 1,547.89 feet along the Northwestern boundary of said State Lease No. 19506 to a point located on the Northern boundary of State Lease No. 199, as amended having Coordinates of X = 2,259,393.60 and Y = 212,743.24; thence along the boundary of said State Lease No. 199 the following courses and distances: South 89 degrees 34 minutes 50 seconds West 1,862.47 feet to a point having Coordinates of X = 2,257,531.18 and Y = 212,729.60 and South 00 degrees 25 minutes 10 seconds East 2,200.00 feet to a point having Coordinates of X = 2,257,547.29 and Y = 210,529.66; thence West 2,000.00 feet to a point having Coordinates of X = 2,255,547.29 and Y = 210,529.66; thence North 3,425.04 feet to the point of beginning, containing approximately **221.88 acres**, all as more particularly outlined on a plat on file in the Office of Mineral Resources, Department of Natural Resources. All bearings, distances and coordinates are based on Louisiana Coordinate System of 1927, (North or South Zone), where applicable.

NOTE: The above description of the Tract nominated for lease has been provided and corrected, where required, exclusively by the nomination party. Any mineral lease selected from this Tract and awarded by the Louisiana State Mineral Board shall be without warranty of any kind, either express, implied, or statutory, including, but not limited to, the implied warranties of merchantability and fitness for a particular purpose. Should the mineral lease awarded by the Louisiana State Mineral Board be subsequently modified, cancelled or abrogated due to the existence of conflicting leases, operating agreements, private claims or other future obligations or conditions which may affect all or any portion of the leased Tract, it shall not relieve the Lessee of the obligation to pay any bonus due thereon to the Louisiana State Mineral Board, nor shall the Louisiana State Mineral Board be obligated to refund any consideration paid by the Lessor prior to such modification, cancellation, or abrogation, including, but not limited to, bonuses, rentals and royalties.

NOTE: The State of Louisiana does hereby reserve, and this lease shall be subject to, the imprescriptible right of surface use in the nature of a servitude in favor of the Department of Natural Resources, including its Offices and Commissions, for the sole purpose of implementing, constructing, servicing and maintaining approved coastal zone management and/or restoration projects. Utilization of any and all rights derived

under this lease by the mineral lessee, its agents, successors or assigns, shall not interfere with nor hinder the reasonable surface use by the Department of Natural Resources, its Offices or Commissions, as herein above reserved.

Applicant: THEOPHILUS OIL, GAS & LAND SERVICES, LLC

Bidder	Cash Payment	Price/Acre	Rental	Oil	Gas	Other

**Legend**  
08120111  
Active\_Leases



TERREBONNE PARISH

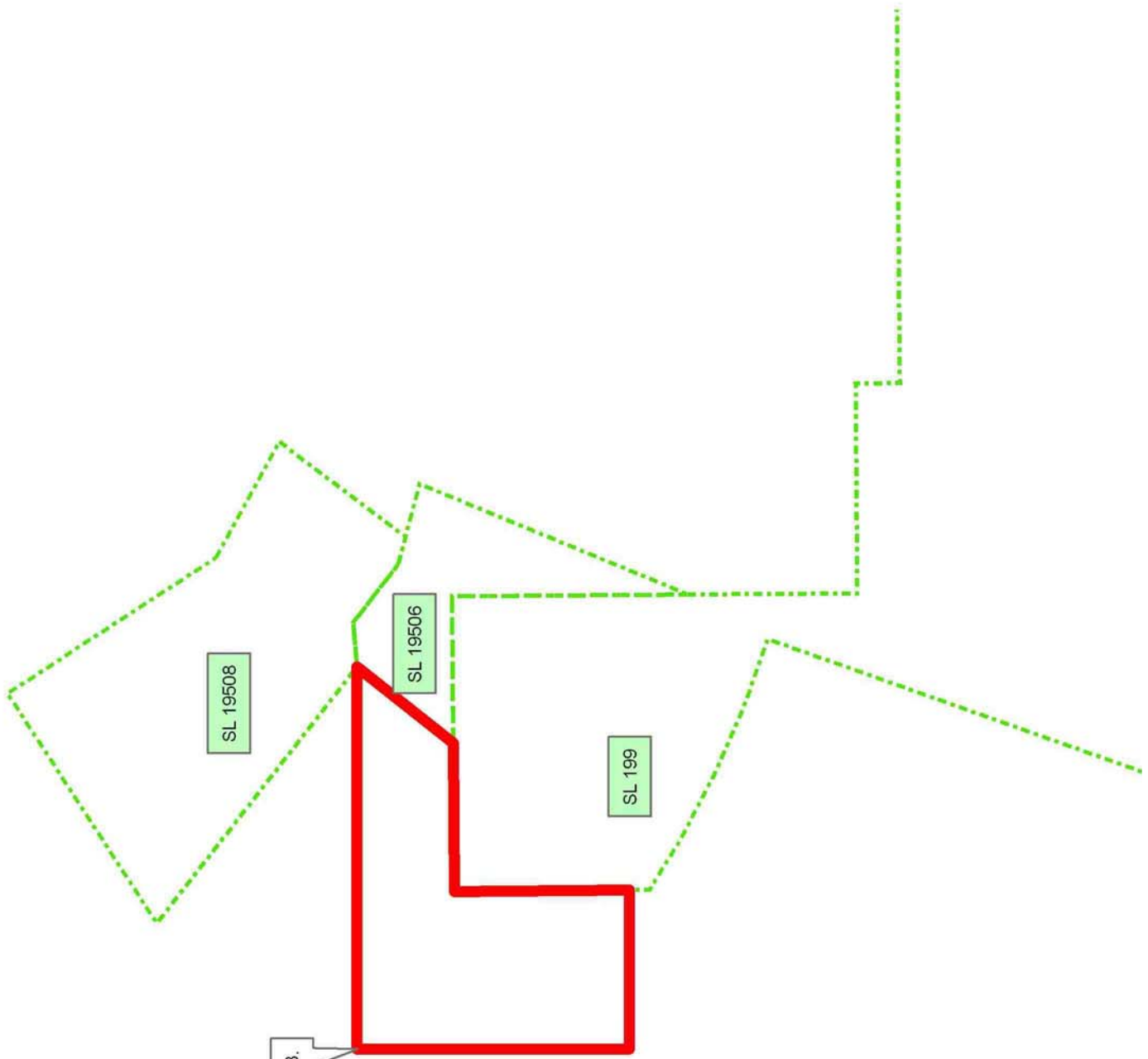
LAKE BARRE

P.O.B.

SL 19508

SL 19506

SL 199



**TRACT 40686 - Lafourche Parish, Louisiana**

All of the lands now or formerly constituting the beds and bottoms of all water bodies of every nature and description as to which title is vested in the State of Louisiana, together with all islands arising therein and other lands formed by accretion or by reliction, where allowed by law, excepting tax adjudicated lands, and not presently under mineral lease on December 10, 2008, situated in Lafourche Parish, Louisiana, and more particularly described as follows: Point of Beginning having Coordinates of X = 2,305,800.00 and Y = 213,400.00; thence East 13,057.24 feet to a point having Coordinates of X = 2,318,857.24 and Y = 213,400.00; thence South 274.91 feet to a point on the North line of State Lease No. 1451, as amended, having Coordinates of X = 2,318,857.24 and Y = 231,125.09; thence South 72 Degrees 40 Minutes 49 Seconds West along the North line of said State Lease No. 1451, as amended, 1,207.91 feet to a point at the Northwest corner of said State Lease No. 1451, as amended, also being a point on the East line of State Lease No. 1450, as amended, having Coordinates of X = 2,317,704.10 and Y = 212,765.49; thence along the boundary of State Lease No. 1450, as amended, the following courses: North 00 Degrees 29 Minutes 10 Seconds West 68.00 feet, South 73 Degrees 43 Minutes 35 Seconds West 1,555.61 feet, South 00 Degrees 29 Minutes 42 Seconds East 774.17 feet, South 73 Degrees 43 Minutes 35 Seconds West 337.98 feet, South 77 Degrees 17 Minutes 34 Seconds West 1165.64 feet, South 82 Degrees 58 Minutes 08 Seconds West 2,465.36 feet, South 84 Degrees 11 Minutes 15 Seconds West 1,286.68 feet, South 01 Degrees 11 Minutes 08 Seconds East approximately 1,836.64 feet to the Southwest corner of said State Lease No. 1450, as amended, also being a point on the North line of State Lease No. 1480, as amended, having Coordinates of X = 2,311,066.52 and Y = 209,003.98; thence Southwesterly approximately 5,097 feet along the North line of State Lease No. 1480, as amended, to a point said to be its Northwest corner; thence Southwesterly approximately 172 feet to a point having Coordinates of X = 2,305,800.00 and Y = 208,958.47; thence North 4,441.53 feet to the point of beginning containing approximately **837 acres**, all as more particularly outlined on a plat on file in the Office of Mineral Resources, Department of Natural Resources. All bearings, distances and coordinates are based on Louisiana Coordinate System of 1927, (North or South Zone), where applicable.

NOTE: The above description of the Tract nominated for lease has been provided and corrected, where required, exclusively by the nomination party. Any mineral lease selected from this Tract and awarded by the Louisiana State Mineral Board shall be without warranty of any kind, either express, implied, or statutory, including, but not limited to, the implied warranties of merchantability and fitness for a particular purpose. Should the mineral lease awarded by the Louisiana State Mineral Board be subsequently modified, cancelled or abrogated due to the existence of conflicting leases, operating agreements, private claims or other future obligations or conditions which may affect all or any portion of the leased Tract, it shall not relieve the Lessee of the obligation to pay any bonus due thereon to the Louisiana State Mineral Board, nor shall



the Louisiana State Mineral Board be obligated to refund any consideration paid by the Lessor prior to such modification, cancellation, or abrogation, including, but not limited to, bonuses, rentals and royalties.

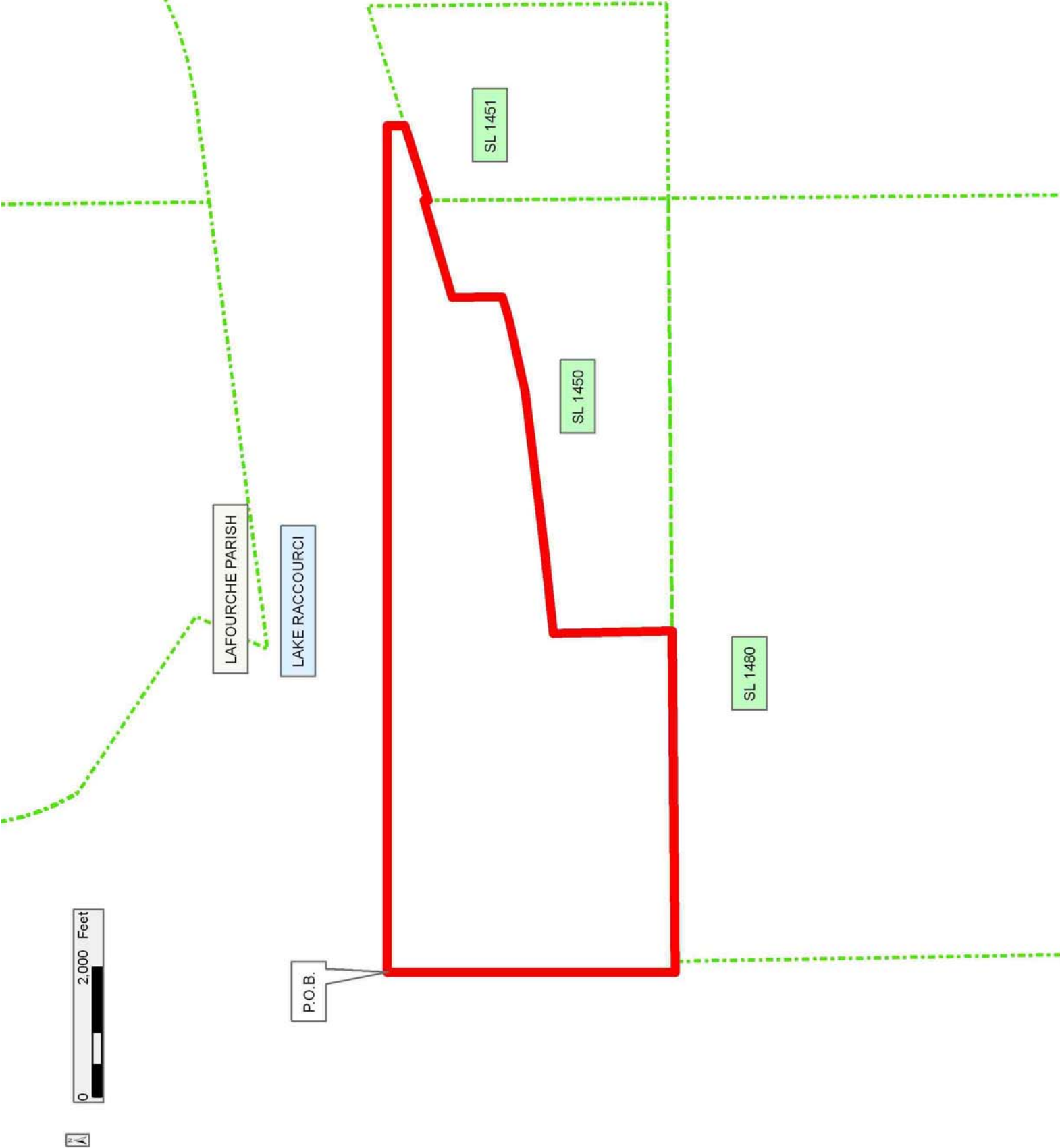
NOTE: The State of Louisiana does hereby reserve, and this lease shall be subject to, the imprescriptible right of surface use in the nature of a servitude in favor of the Department of Natural Resources, including its Offices and Commissions, for the sole purpose of implementing, constructing, servicing and maintaining approved coastal zone management and/or restoration projects. Utilization of any and all rights derived under this lease by the mineral lessee, its agents, successors or assigns, shall not interfere with nor hinder the reasonable surface use by the Department of Natural Resources, its Offices or Commissions, as herein above reserved.

Applicant: SPECTER EXPLORATION, INC.

Bidder	Cash Payment	Price/Acre	Rental	Oil	Gas	Other

**Legend**

- 08120129
- Active\_Leases



**TRACT 40687 - Lafourche Parish, Louisiana**

All of the lands now or formerly constituting the beds and bottoms of all water bodies of every nature and description as to which title is vested in the State of Louisiana, together with all islands arising therein and other lands formed by accretion or by reliction, where allowed by law, excepting tax adjudicated lands, and not presently under mineral lease on December 10, 2008, situated in Lafourche Parish, Louisiana, and more particularly described as follows: Beginning at a point having Coordinates of X = 2,320,715.21 and Y = 212,400.00; thence East 16,284.79 feet to a point having Coordinates of X = 2,337,000.00 and Y = 212,400.00; thence South 7,000.00 feet to a point having Coordinates of X = 2,337,000.00 and Y = 205,400.00; thence West 12,675.74 feet to a point on the East line of State Lease No. 14589 having Coordinates of X = 2,324,324.26 and Y = 205,400.00; thence North along the West line of said State Lease No. 14589 a distance of 3,695.75 feet to the Northeast corner of State Lease No. 14589 having Coordinates of X = 2,324,324.26 and Y = 209,095.75; thence West along the North line of said State Lease No. 14589 a distance of 2,637.29 feet to a point having Coordinates of X = 2,321,686.97 and Y = 209,095.74; thence South 89 degrees 30 minutes 19 seconds West 943.15 feet to a point being the Southeast corner of State Lease 1451, as amended, having Coordinates of X = 2,320,743.86 and Y = 209,087.60; thence North 00 degrees 29 minutes 43 seconds West along the East line of said State Lease No. 1451, 3,312.53 feet to the point of beginning, (This lease includes only waterbottoms claimed and owned by the state and specifically excludes any land which the state may claim or own and to which the mineral rights are vested in the state), containing approximately **2,028 acres**, all as more particularly outlined on a plat on file in the Office of Mineral Resources, Department of Natural Resources. All bearings, distances and coordinates are based on Louisiana Coordinate System of 1927, (North or South Zone), where applicable.

NOTE: The above description of the Tract nominated for lease has been provided and corrected, where required, exclusively by the nomination party. Any mineral lease selected from this Tract and awarded by the Louisiana State Mineral Board shall be without warranty of any kind, either express, implied, or statutory, including, but not limited to, the implied warranties of merchantability and fitness for a particular purpose. Should the mineral lease awarded by the Louisiana State Mineral Board be subsequently modified, cancelled or abrogated due to the existence of conflicting leases, operating agreements, private claims or other future obligations or conditions which may affect all or any portion of the leased Tract, it shall not relieve the Lessee of the obligation to pay any bonus due thereon to the Louisiana State Mineral Board, nor shall the Louisiana State Mineral Board be obligated to refund any consideration paid by the Lessor prior to such modification, cancellation, or abrogation, including, but not limited to, bonuses, rentals and royalties.

NOTE: The State of Louisiana does hereby reserve, and this lease shall be subject to, the imprescriptible right of surface use in the nature of a

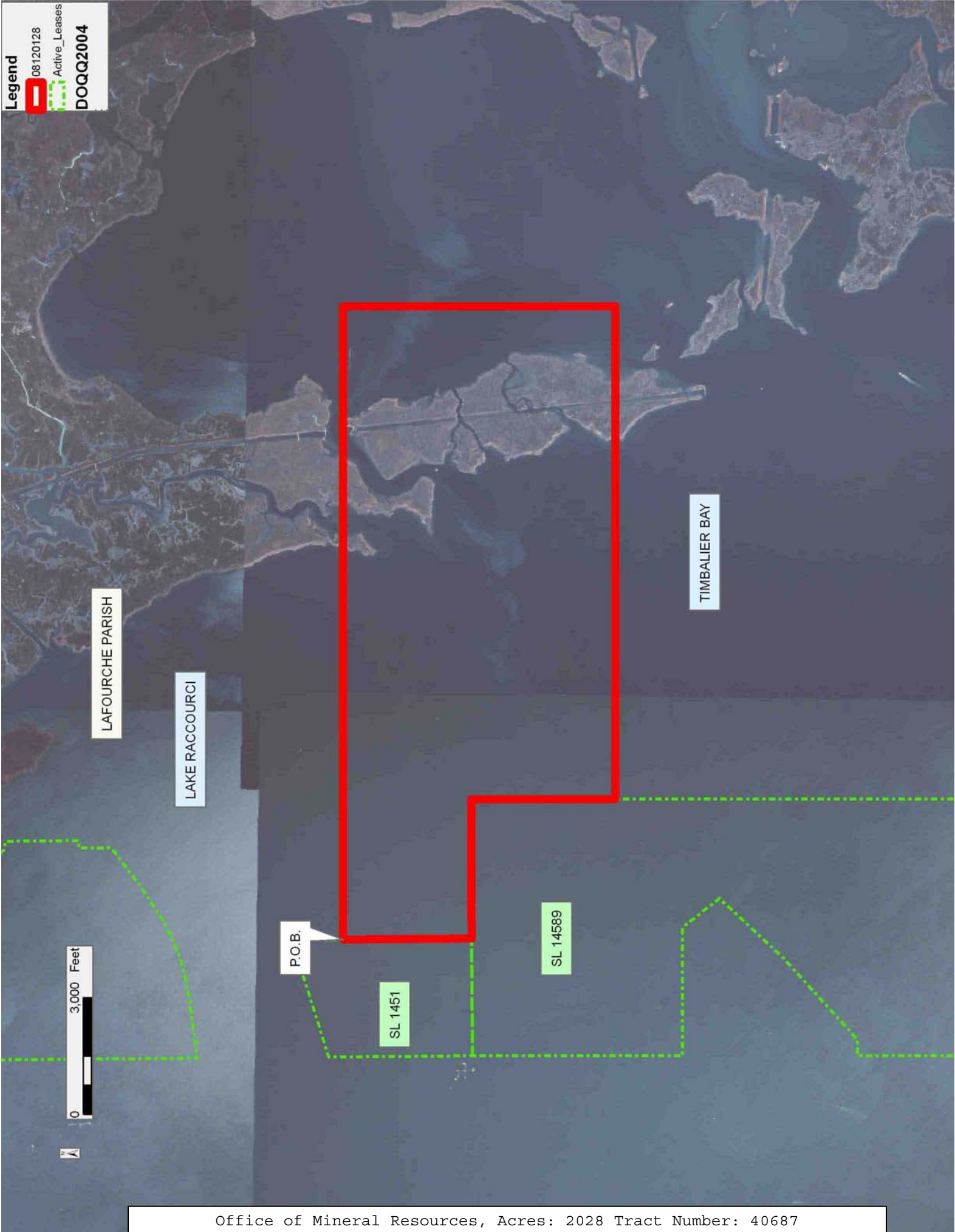
servitude in favor of the Department of Natural Resources, including its Offices and Commissions, for the sole purpose of implementing, constructing, servicing and maintaining approved coastal zone management and/or restoration projects. Utilization of any and all rights derived under this lease by the mineral lessee, its agents, successors or assigns, shall not interfere with nor hinder the reasonable surface use by the Department of Natural Resources, its Offices or Commissions, as herein above reserved.

Applicant: SPECTER EXPLORATION, INC.

Bidder	Cash Payment	Price/Acre	Rental	Oil	Gas	Other

**Legend**

- 08120128
- Active\_Leases
- DOQQ2004



**TRACT 40688 - Lafourche Parish, Louisiana**

All of the lands now or formerly constituting the beds and bottoms of all water bodies of every nature and description as to which title is vested in the State of Louisiana, together with all islands arising therein and other lands formed by accretion or by reliction, where allowed by law, excepting tax adjudicated lands, and not presently under mineral lease on December 10, 2008, situated in Lafourche Parish, Louisiana, and more particularly described as follows: Beginning at a point having Coordinates of X = 2,330,300.00 and Y = 205,400.00; thence East 6,700.00 feet to a point having Coordinates of X = 2,337,000.00 and Y = 205,400.00; thence North 7,000.00 feet to a point having Coordinates of X = 2,337,000.00 and Y = 212,400.00; thence East 3,300.00 feet to a point having Coordinates of X = 2,340,300.00 and Y = 212,400.00; thence South 16,000.00 feet to a point having Coordinates of X = 2,340,300.00 and Y = 196,400.00; thence West 10,000.00 feet to a point having Coordinates of X = 2,330,300.00 and Y = 196,400.00; thence North 9,000.00 feet to the point of beginning, (This tract includes only waterbottoms claimed and owned by the state and specifically excludes any land which the state may claim or own and to which the mineral rights are vested in the state), tract containing approximately **2,338 acres**, all as more particularly outlined on a plat on file in the Office of Mineral Resources, Department of Natural Resources. All bearings, distances and coordinates are based on Louisiana Coordinate System of 1927, (North or South Zone), where applicable.

NOTE: The above description of the Tract nominated for lease has been provided and corrected, where required, exclusively by the nomination party. Any mineral lease selected from this Tract and awarded by the Louisiana State Mineral Board shall be without warranty of any kind, either express, implied, or statutory, including, but not limited to, the implied warranties of merchantability and fitness for a particular purpose. Should the mineral lease awarded by the Louisiana State Mineral Board be subsequently modified, cancelled or abrogated due to the existence of conflicting leases, operating agreements, private claims or other future obligations or conditions which may affect all or any portion of the leased Tract, it shall not relieve the Lessee of the obligation to pay any bonus due thereon to the Louisiana State Mineral Board, nor shall the Louisiana State Mineral Board be obligated to refund any consideration paid by the Lessor prior to such modification, cancellation, or abrogation, including, but not limited to, bonuses, rentals and royalties.

NOTE: The State of Louisiana does hereby reserve, and this lease shall be subject to, the imprescriptible right of surface use in the nature of a servitude in favor of the Department of Natural Resources, including its Offices and Commissions, for the sole purpose of implementing, constructing, servicing and maintaining approved coastal zone management and/or restoration projects. Utilization of any and all rights derived under this lease by the mineral lessee, its agents, successors or assigns, shall not interfere with nor hinder the reasonable surface use by the

Department of Natural Resources, its Offices or Commissions, as herein above reserved.

Applicant: SPECTER EXPLORATION, INC.

Bidder	Cash Payment	Price/Acre	Rental	Oil	Gas	Other



LITTLE LAKE

LAFOURCHE PARISH

P.O.B.

TIMBALIER BAY





**TRACT 40689 - Lafourche Parish, Louisiana**

All of the lands now or formerly constituting the beds and bottoms of all water bodies of every nature and description as to which title is vested in the State of Louisiana, together with all islands arising therein and other lands formed by accretion or by reliction, where allowed by law, excepting tax adjudicated lands, and not presently under mineral lease on December 10, 2008, situated in Lafourche Parish, Louisiana, and more particularly described as follows: Beginning at a point having Coordinates of X = 2,340,300.00 and Y = 212,400.00; thence East 11,916.09 feet to a point on the Western boundary of State Lease No. 19647 having Coordinates of X = 2,352,216.09 and Y = 212,400.00; thence along the boundary of said State Lease No. 19647 the following courses: South 00 degrees 51 minutes 27 seconds East 4,449.89 feet to a corner having Coordinates of X = 2,352,282.67 and Y = 207,950.61 and South 03 degrees 30 minutes 00 seconds East 2,639.78 feet to its Southwest corner having Coordinates of X = 2,352,443.83 and Y = 205,315.75; thence South 8,915.75 feet to a point having Coordinates of X = 2,352,443.83 and Y = 196,400.00; thence West 12,143.83 feet to a point having Coordinates of X = 2,340,300.00 and Y = 196,400.00; thence North 16,000.00 feet to the point of beginning, (This tract includes only waterbottoms claimed and owned by the state and specifically excludes any land which the state may claim or own and to which the mineral rights are vested in the state), tract containing approximately **2,068 acres**, all as more particularly outlined on a plat on file in the Office of Mineral Resources, Department of Natural Resources. All bearings, distances and coordinates are based on Louisiana Coordinate System of 1927, (North or South Zone), where applicable.

NOTE: The above description of the Tract nominated for lease has been provided and corrected, where required, exclusively by the nomination party. Any mineral lease selected from this Tract and awarded by the Louisiana State Mineral Board shall be without warranty of any kind, either express, implied, or statutory, including, but not limited to, the implied warranties of merchantability and fitness for a particular purpose. Should the mineral lease awarded by the Louisiana State Mineral Board be subsequently modified, cancelled or abrogated due to the existence of conflicting leases, operating agreements, private claims or other future obligations or conditions which may affect all or any portion of the leased Tract, it shall not relieve the Lessee of the obligation to pay any bonus due thereon to the Louisiana State Mineral Board, nor shall the Louisiana State Mineral Board be obligated to refund any consideration paid by the Lessor prior to such modification, cancellation, or abrogation, including, but not limited to, bonuses, rentals and royalties.

NOTE: The State of Louisiana does hereby reserve, and this lease shall be subject to, the imprescriptible right of surface use in the nature of a servitude in favor of the Department of Natural Resources, including its Offices and Commissions, for the sole purpose of implementing, constructing, servicing and maintaining approved coastal zone management and/or restoration projects. Utilization of any and all rights derived

under this lease by the mineral lessee, its agents, successors or assigns, shall not interfere with nor hinder the reasonable surface use by the Department of Natural Resources, its Offices or Commissions, as herein above reserved.

Applicant: SPECTER EXPLORATION, INC.

Bidder	Cash Payment	Price/Acre	Rental	Oil	Gas	Other

**Legend**  
08120139  
Active\_Leases  
DOQQ2004



**TRACT 40690 - Terrebonne Parish, Louisiana**

All of the lands now or formerly constituting the beds and bottoms of all water bodies of every nature and description as to which title is vested in the State of Louisiana, together with all islands arising therein and other lands formed by accretion or by reliction, where allowed by law, excepting tax adjudicated lands, and not presently under mineral lease on December 10, 2008, situated in Terrebonne Parish, Louisiana, and more particularly described as follows: Beginning at a point on the East boundary of State Lease No. 19506 having Coordinates of X = 2,262,233.23 and Y = 212,143.00; thence East 1,683.11 feet to a point having Coordinates of X = 2,263,916.34 and Y = 212,143.00; thence South 4,463.79 feet to a point on the North boundary of State Lease No. 199, as amended having Coordinates of X = 2,263,916.34 and Y = 207,679.21; thence along the boundary of said State Lease No. 199 the following courses and distances: South 89 degrees 34 minutes 50 seconds West 2,640.00 feet to a corner having Coordinates of X = 2,261,276.41 and Y = 207,659.89 and North 00 degrees 25 minutes 10 seconds West 2,121.39 feet to the Southernmost corner of said State Lease No. 19506 having Coordinates of X = 2,261,260.88 and Y = 209,781.22; thence North 22 degrees 22 minutes 37 seconds East 2,554.11 feet along the East boundary of said State Lease No. 19506 to the point of beginning, containing approximately **245.97 acres**, all as more particularly outlined on a plat on file in the Office of Mineral Resources, Department of Natural Resources. All bearings, distances and coordinates are based on Louisiana Coordinate System of 1927, (North or South Zone), where applicable.

NOTE: The above description of the Tract nominated for lease has been provided and corrected, where required, exclusively by the nomination party. Any mineral lease selected from this Tract and awarded by the Louisiana State Mineral Board shall be without warranty of any kind, either express, implied, or statutory, including, but not limited to, the implied warranties of merchantability and fitness for a particular purpose. Should the mineral lease awarded by the Louisiana State Mineral Board be subsequently modified, cancelled or abrogated due to the existence of conflicting leases, operating agreements, private claims or other future obligations or conditions which may affect all or any portion of the leased Tract, it shall not relieve the Lessee of the obligation to pay any bonus due thereon to the Louisiana State Mineral Board, nor shall the Louisiana State Mineral Board be obligated to refund any consideration paid by the Lessor prior to such modification, cancellation, or abrogation, including, but not limited to, bonuses, rentals and royalties.

NOTE: The State of Louisiana does hereby reserve, and this lease shall be subject to, the imprescriptible right of surface use in the nature of a servitude in favor of the Department of Natural Resources, including its Offices and Commissions, for the sole purpose of implementing, constructing, servicing and maintaining approved coastal zone management and/or restoration projects. Utilization of any and all rights derived under this lease by the mineral lessee, its agents, successors or assigns,

shall not interfere with nor hinder the reasonable surface use by the Department of Natural Resources, its Offices or Commissions, as herein above reserved.

Applicant: THEOPHILUS OIL, GAS & LAND SERVICES, LLC

Bidder	Cash Payment	Price/Acre	Rental	Oil	Gas	Other

**Legend**

- 08120103
- Active\_Leases

