

TRACT 40671 - Terrebonne Parish, Louisiana

All of the lands now or formerly constituting the beds and bottoms of all water bodies of every nature and description as to which title is vested in the State of Louisiana, together with all islands arising therein and other lands formed by accretion or by reliction, where allowed by law, excepting tax adjudicated lands, and not presently under mineral lease on December 10, 2008, situated in Terrebonne Parish, Louisiana, and more particularly described as follows: Beginning at a point having Coordinates of X = 2,227,600.00 and Y = 228,000.00; thence East 18,000.00 feet to a point having Coordinates of X = 2,245,600.00 and Y = 228,000.00; thence South 6,000.00 feet to a point having Coordinates of X = 2,245,600.00 and Y = 222,000.00; thence West 18,000.00 feet to a point having Coordinates of X = 2,227,600.00 and Y = 222,000.00; North 6,000.00 feet to the point of beginning, containing approximately **2,306 acres**, all as more particularly outlined on a plat on file in the Office of Mineral Resources, Department of Natural Resources. All bearings, distances and coordinates are based on Louisiana Coordinate System of 1927, (North or South Zone), where applicable.

NOTE: The above description of the Tract nominated for lease has been provided and corrected, where required, exclusively by the nomination party. Any mineral lease selected from this Tract and awarded by the Louisiana State Mineral Board shall be without warranty of any kind, either express, implied, or statutory, including, but not limited to, the implied warranties of merchantability and fitness for a particular purpose. Should the mineral lease awarded by the Louisiana State Mineral Board be subsequently modified, cancelled or abrogated due to the existence of conflicting leases, operating agreements, private claims or other future obligations or conditions which may affect all or any portion of the leased Tract, it shall not relieve the Lessee of the obligation to pay any bonus due thereon to the Louisiana State Mineral Board, nor shall the Louisiana State Mineral Board be obligated to refund any consideration paid by the Lessor prior to such modification, cancellation, or abrogation, including, but not limited to, bonuses, rentals and royalties.

NOTE: The State of Louisiana does hereby reserve, and this lease shall be subject to, the imprescriptible right of surface use in the nature of a servitude in favor of the Department of Natural Resources, including its Offices and Commissions, for the sole purpose of implementing, constructing, servicing and maintaining approved coastal zone management and/or restoration projects. Utilization of any and all rights derived under this lease by the mineral lessee, its agents, successors or assigns, shall not interfere with nor hinder the reasonable surface use by the Department of Natural Resources, its Offices or Commissions, as herein above reserved.

Applicant: PETRO-LAND RESOURCES, INC.

Bidder	Cash Payment	Price/Acre	Rental	Oil	Gas	Other

Legend

08120093

DOQQ2004

TERREBONNE PARISH

T20S - R18E

LAKE BARRE

BAY LA FLEUR

T21S - R18E

P.O.B.



TRACT 40672 - Lafourche Parish, Louisiana

All of the lands now or formerly constituting the beds and bottoms of all water bodies of every nature and description as to which title is vested in the State of Louisiana, together with all islands arising therein and other lands formed by accretion or by reliction, where allowed by law, excepting tax adjudicated lands, and not presently under mineral lease on December 10, 2008, situated in Lafourche Parish, Louisiana, and more particularly described as follows: Point of Beginning having Coordinates of X = 2,319,647.98 and Y = 224,400.00; thence East 16,852.02 feet to a point having Coordinates of X = 2,336,500.00 and Y = 224,400.00; thence South 6,000.00 feet to a point having Coordinates of X = 2,336,500.00 and Y = 218,400.00; thence West 13,426.13 feet to a point on the East line of State Lease No. 1451, as amended, having Coordinates of X = 2,323,073.87 and Y = 218,400.00; along the East line of State Lease No. 1451, as amended, thence North 00 Degrees 29 Minutes 46 Seconds West 783.10 feet to a point having Coordinates of X = 2,323,067.09 and Y = 219,183.07; thence North 89 Degrees 30 Minutes 18 Seconds East 190.00 feet to a point having Coordinates of X = 2,323,257.09 and Y = 219,184.71; thence North 00 Degrees 29 Minutes 42 Seconds West 941.12 feet to a point on the East line of State Lease No. 1451, as amended, also being the Southernmost point of State Lease No. 16563, as amended, having Coordinates of X = 2,323,248.96 and Y = 220,125.79; thence along the boundary of State Lease No. 16563, as amended, the following fifteen courses: North 69 Degrees 18 Minutes 09 Seconds East 387.45 feet; thence North 66 Degrees 18 Minutes 14 Seconds East 288.87 feet; thence North 58 Degrees 00 Minutes 06 Seconds East 380.55 feet; thence North 50 Degrees 28 Minutes 59 Seconds East 320.20 feet; thence North 40 Degrees 22 Minutes 21 Seconds East 242.12 feet; thence North 22 Degrees 24 Minutes 55 Seconds East 166.22 feet; thence North 04 Degrees 44 Minutes 55 Seconds East 126.49 feet; thence North 09 Degrees 25 Minutes 58 Seconds West 93.73 feet; thence North 27 Degrees 49 Minutes 20 Seconds West 98.71 feet; thence North 43 Degrees 52 Minutes 04 Seconds West 209.20 feet; thence North 58 Degrees 18 Minutes 41 Seconds West 162.43 feet; thence North 74 Degrees 20 Minutes 31 Seconds West 386.33 feet; thence North 84 Degrees 53 Minutes 31 Seconds West 233.04 feet; thence North 88 Degrees 51 Minutes 51 Seconds West 799.15 feet; thence North 88 Degrees 59 Minutes 52 Seconds West 476.09 feet to the Northernmost point of State Lease No. 16563, as amended, also being a point on the East line of State Lease No. 1451, as amended, having Coordinates of X = 2,322,452.61 and Y = 221,813.49; thence along the East line of State Lease No. 1451, as amended, the following seven courses: North 37 Degrees 24 Minutes 19 Seconds West 876.81 feet; thence North 41 Degrees 55 Minutes 21 Seconds West 658.56 feet; thence North 45 Degrees 36 Minutes 11 Seconds West 671.79 feet; thence North 47 Degrees 38 Minutes 33 Seconds West 460.11 feet; thence North 53 Degrees 44 Minutes 46 Seconds West 372.02 feet; thence North 56 Degrees 18 Minutes 36 Seconds West 432.67 feet; thence North 65 Degrees 33 Minutes 22 Seconds West 386.68 feet to the point of beginning, containing approximately **602 acres**, all as more particularly outlined on a plat on file in the Office of Mineral Resources, Department of Natural Resources. All bearings, distances and

coordinates are based on Louisiana Coordinate System of 1927, (North or South Zone), where applicable.

NOTE: The above description of the Tract nominated for lease has been provided and corrected, where required, exclusively by the nomination party. Any mineral lease selected from this Tract and awarded by the Louisiana State Mineral Board shall be without warranty of any kind, either express, implied, or statutory, including, but not limited to, the implied warranties of merchantability and fitness for a particular purpose. Should the mineral lease awarded by the Louisiana State Mineral Board be subsequently modified, cancelled or abrogated due to the existence of conflicting leases, operating agreements, private claims or other future obligations or conditions which may affect all or any portion of the leased Tract, it shall not relieve the Lessee of the obligation to pay any bonus due thereon to the Louisiana State Mineral Board, nor shall the Louisiana State Mineral Board be obligated to refund any consideration paid by the Lessor prior to such modification, cancellation, or abrogation, including, but not limited to, bonuses, rentals and royalties.

NOTE: The State of Louisiana does hereby reserve, and this lease shall be subject to, the imprescriptible right of surface use in the nature of a servitude in favor of the Department of Natural Resources, including its Offices and Commissions, for the sole purpose of implementing, constructing, servicing and maintaining approved coastal zone management and/or restoration projects. Utilization of any and all rights derived under this lease by the mineral lessee, its agents, successors or assigns, shall not interfere with nor hinder the reasonable surface use by the Department of Natural Resources, its Offices or Commissions, as herein above reserved.

Applicant: SPECTER EXPLORATION, INC.

Bidder	Cash Payment	Price/Acre	Rental	Oil	Gas	Other

Legend
08120126
Active_Leases
DOQQ2004

LAFOURCHE PARISH

CHINA BAYOU

LAKE RACCOURCI



P.O.B.

SL 16563

SL 1451

TRACT 40673 - Lafourche Parish, Louisiana

All of the lands now or formerly constituting the beds and bottoms of all water bodies of every nature and description as to which title is vested in the State of Louisiana, together with all islands arising therein and other lands formed by accretion or by reliction, where allowed by law, excepting tax adjudicated lands, and not presently under mineral lease on December 10, 2008, situated in Lafourche Parish, Louisiana, and more particularly described as follows: Point of Beginning having Coordinates of X = 2,336,500.00 and Y = 224,400.00; thence East 18,000.00 feet to a point having Coordinates of X = 2,354,500.00 and Y = 224,400.00; thence South approximately 6,573 feet to a point on the Northern boundary of State Lease No. 19647; thence Southwesterly, along the North line of State Lease No. 19647 approximately 3,184 feet to its Northwest corner also being the Southeast corner of State Lease No. 1908, as amended; thence along the boundary of said State Lease No. 1908 the following courses: Northwesterly, Westerly, and Southeasterly approximately 3,880 feet to a point that intersects with a line that bears East from a point having Coordinates of X = 2,336,500.00 and Y = 218,400.00; thence West approximately 9,769 feet to a point having Coordinates of X = 2,336,500.00 and Y = 218,400.00; thence North 6,000.00 feet to the point of beginning, containing approximately **237 acres**, all as more particularly outlined on a plat on file in the Office of Mineral Resources, Department of Natural Resources. All bearings, distances and coordinates are based on Louisiana Coordinate System of 1927, (North or South Zone), where applicable.

NOTE: The above description of the Tract nominated for lease has been provided and corrected, where required, exclusively by the nomination party. Any mineral lease selected from this Tract and awarded by the Louisiana State Mineral Board shall be without warranty of any kind, either express, implied, or statutory, including, but not limited to, the implied warranties of merchantability and fitness for a particular purpose. Should the mineral lease awarded by the Louisiana State Mineral Board be subsequently modified, cancelled or abrogated due to the existence of conflicting leases, operating agreements, private claims or other future obligations or conditions which may affect all or any portion of the leased Tract, it shall not relieve the Lessee of the obligation to pay any bonus due thereon to the Louisiana State Mineral Board, nor shall the Louisiana State Mineral Board be obligated to refund any consideration paid by the Lessor prior to such modification, cancellation, or abrogation, including, but not limited to, bonuses, rentals and royalties.

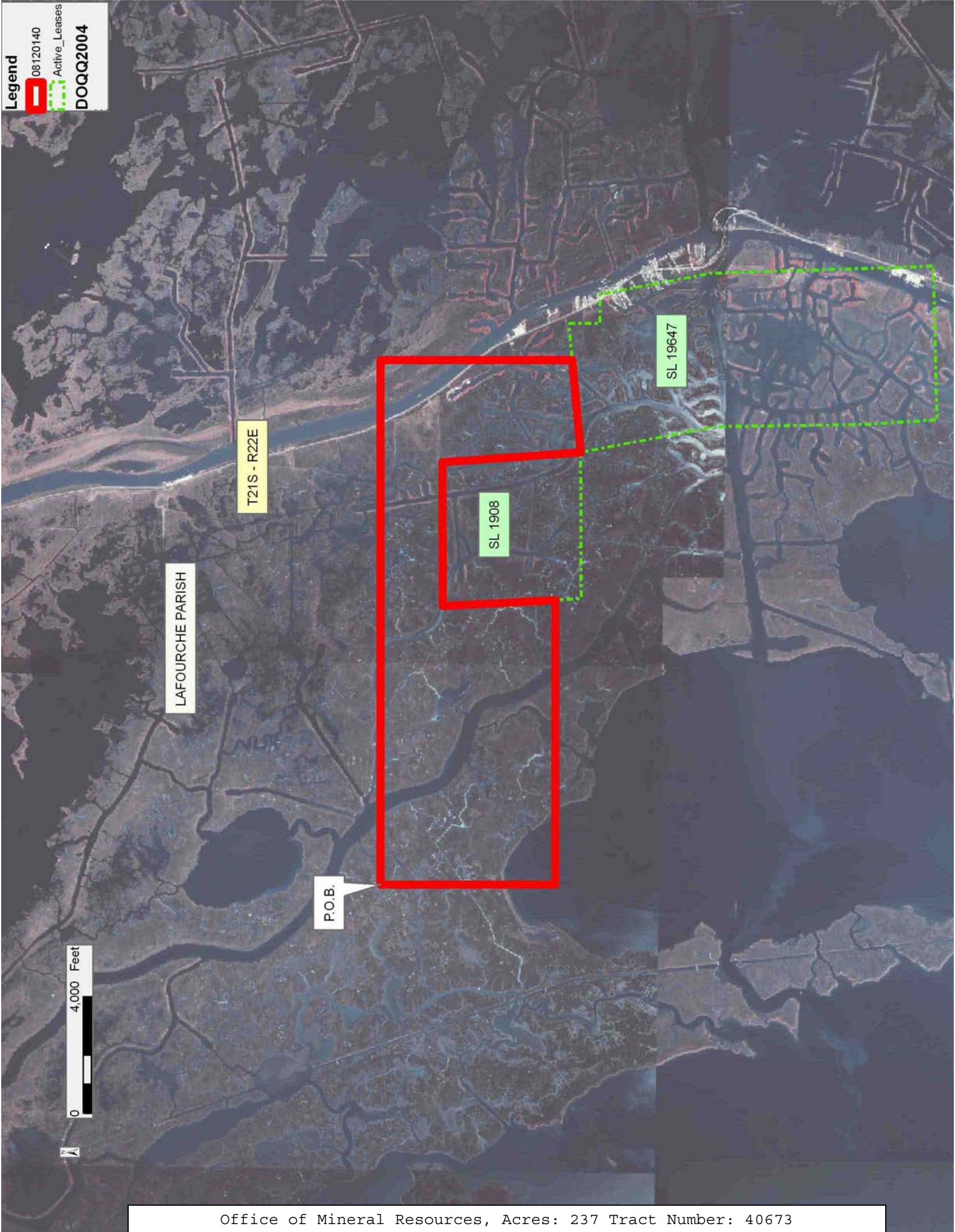
NOTE: The State of Louisiana does hereby reserve, and this lease shall be subject to, the imprescriptible right of surface use in the nature of a servitude in favor of the Department of Natural Resources, including its Offices and Commissions, for the sole purpose of implementing, constructing, servicing and maintaining approved coastal zone management and/or restoration projects. Utilization of any and all rights derived under this lease by the mineral lessee, its agents, successors or assigns, shall not interfere with nor hinder the reasonable surface use by the

Department of Natural Resources, its Offices or Commissions, as herein above reserved.

Applicant: SPECTER EXPLORATION, INC.

Bidder	Cash Payment	Price/Acre	Rental	Oil	Gas	Other

Legend
08120140
Active_Leases
DOQQ2004



TRACT 40674 - Lafourche Parish, Louisiana

All of the lands now or formerly constituting the beds and bottoms of all water bodies of every nature and description as to which title is vested in the State of Louisiana, together with all islands arising therein and other lands formed by accretion or by reliction, where allowed by law, excepting tax adjudicated lands, and not presently under mineral lease on December 10, 2008, situated in Lafourche Parish, Louisiana, and more particularly described as follows: Point of Beginning having Coordinates of X = 2,354,500.00 and Y = 224,400.00; thence East 8,500.00 feet to a point having Coordinates of X = 2,363,000.00 and Y = 224,400.00; thence South 6,270.31 feet to a point on the North line of State Lease No. 19646 having Coordinates of X = 2,363,000.00 and Y = 218,129.69; thence South 88 Degrees 53 Minutes 51 Seconds West along the North line of State Lease No. 19646 a distance of 1,180.96 feet to the Northwest corner of State Lease No. 19646 also being the Northeast corner of State Lease No. 19648 having Coordinates of X = 2,361,819.26 and Y = 218,106.97 along the North line of said State Lease No. 19648; thence South 88 Degrees 28 Minutes 45 Seconds West 2,320.08 feet to a point having Coordinates of X = 2,359,500.00 and Y = 218,045.38; thence South 1,177.07 feet to a point having Coordinates of X = 2,359,500.00 and Y = 216,868.31; thence West 2,746.59 feet to the Northwest corner of State Lease No. 19648 also being the Northeast corner of State Lease No. 19647 having Coordinates of X = 2,356,753.41 and Y = 216,868.31 along the North line of State Lease No. 19647; thence West 1,005.80 feet to a point having Coordinates of X = 2,355,747.61 and Y = 216,868.31; thence North 00 Degrees 00 Minutes 01 Seconds East 349.38 feet to the Southwest corner of State Lease No. 18816 having Coordinates of X = 2,355,747.61 and Y = 217,217.69; thence North 88 Degrees 26 Minutes 00 Seconds East along the South line of said State Lease No. 18816 a distance of 1,406.17 feet to the Southeast corner of State Lease No. 18816 having Coordinates of X = 2,357,153.25 and Y = 217,256.14; thence North 18 Degrees 52 Minutes 00 Seconds West along the East line of State Lease No. 18816 a distance of 1,600.00 feet to the Northeast corner of State Lease No. 18816 having Coordinates of X = 2,356,635.87 and Y = 218,770.18 along the North line of State Lease No. 18816; thence South 67 Degrees 07 Minutes 00 Seconds West 247.60 feet to a point having Coordinates of X = 2,356,407.75 and Y = 218,673.90; thence South 80 Degrees 43 Minutes 59 Seconds West 151.40 feet to a point having Coordinates of X = 2,356,258.33 and Y = 218,649.52; thence South 85 Degrees 14 Minutes 00 Seconds West 120.40 feet to a point having Coordinates of X = 2,356,138.35 and Y = 218,639.51; thence North 89 Degrees 59 Minutes 59 Seconds West 125.00 feet to a point having Coordinates of X = 2,356,013.35 and Y = 218,639.51; thence North 85 Degrees 14 Minutes 00 Seconds West 120.40 feet to a point having Coordinates of X = 2,355,893.36 and Y = 218,649.52; thence North 78 Degrees 24 Minutes 01 Seconds West 148.79 feet to the Northwest corner of State Lease No. 18816 having Coordinates of X = 2,355,747.61 and Y = 218,679.43; thence South along the West line of State Lease No. 18816 a distance of 733.67 feet to the most Northerly corner of State Lease No. 19647 having Coordinates of X = 2,355,747.61 and Y = 217,945.77; thence South 84 Degrees 43 Minutes 50 Seconds West along the North line of State

Lease No. 19647 a distance of 1,252.91 feet to a point having Coordinates of X = 2,354,500.00 and Y = 217,830.70; thence North 1,812.86 feet to a point having Coordinates of X = 2,354,500.00 and Y = 219,643.56; thence East 289.50 feet to the Southwest corner of State Lease No. 19778 having Coordinates of X = 2,354,789.50 and Y = 219,643.56; thence East 1,726.56 feet to the Southeast corner of State Lease No. 19778 having Coordinates of X = 2,356,516.06 and Y = 219,643.56; thence North 410.39 feet along the East line of State Lease No. 19778 to a point having Coordinates of X = 2,356,516.06 and Y = 220,053.95; thence North 66 Degrees 21 Minutes 46 Seconds West 513.58 feet to a point having Coordinates of X = 2,356,045.57 and Y = 220,259.86; thence North 24 Degrees 23 Minutes 52 Seconds West 331.65 feet to a point having Coordinates of X = 2,355,908.58 and Y = 220,561.90; thence West 1,119.08 feet to the Northwest corner of State Lease No. 19778 having Coordinates of X = 2,354,789.50 and Y = 220,561.90; thence South 918.34 feet to the Southwest corner of State Lease No. 19778 having Coordinates of X = 2,354,789.50 and Y = 219,643.56; thence West 289.50 feet to a point having Coordinates of X = 2,354,500.00 and Y = 219,643.56; thence North 4,756.44 feet to the point of beginning, (This lease includes only waterbottoms claimed and owned by the state and specifically excludes any land which the state may claim or own and to which the mineral rights are vested in the state), containing approximately **26 acres**, all as more particularly outlined on a plat on file in the Office of Mineral Resources, Department of Natural Resources. All bearings, distances and coordinates are based on Louisiana Coordinate System of 1927, (North or South Zone), where applicable.

NOTE: The above description of the Tract nominated for lease has been provided and corrected, where required, exclusively by the nomination party. Any mineral lease selected from this Tract and awarded by the Louisiana State Mineral Board shall be without warranty of any kind, either express, implied, or statutory, including, but not limited to, the implied warranties of merchantability and fitness for a particular purpose. Should the mineral lease awarded by the Louisiana State Mineral Board be subsequently modified, cancelled or abrogated due to the existence of conflicting leases, operating agreements, private claims or other future obligations or conditions which may affect all or any portion of the leased Tract, it shall not relieve the Lessee of the obligation to pay any bonus due thereon to the Louisiana State Mineral Board, nor shall the Louisiana State Mineral Board be obligated to refund any consideration paid by the Lessor prior to such modification, cancellation, or abrogation, including, but not limited to, bonuses, rentals and royalties.

NOTE: The State of Louisiana does hereby reserve, and this lease shall be subject to, the imprescriptible right of surface use in the nature of a servitude in favor of the Department of Natural Resources, including its Offices and Commissions, for the sole purpose of implementing, constructing, servicing and maintaining approved coastal zone management and/or restoration projects. Utilization of any and all rights derived under this lease by the mineral lessee, its agents, successors or assigns,

shall not interfere with nor hinder the reasonable surface use by the Department of Natural Resources, its Offices or Commissions, as herein above reserved.

Applicant: SPECTER EXPLORATION, INC.

Bidder	Cash Payment	Price/Acre	Rental	Oil	Gas	Other

Legend
08120137
Active_Leases
DOQQ2004

LAFOURCHE PARISH

T21S - R22E

P.O.B.



SL 19778

SL 18816

SL 19646

SL 19648

BAYOU LAFOURCHE

SL 19647

TRACT 40675 - Terrebonne Parish, Louisiana

All of the lands now or formerly constituting the beds and bottoms of all water bodies of every nature and description as to which title is vested in the State of Louisiana, together with all islands arising therein and other lands formed by accretion or by reliction, where allowed by law, excepting tax adjudicated lands, and not presently under mineral lease on December 10, 2008, situated in Terrebonne Parish, Louisiana, and more particularly described as follows: Beginning at a point having Coordinates of X = 2,255,547.29 and Y = 224,828.90; thence East 6,715.71 feet to a point having Coordinates of X = 2,262,263.00 and Y = 224,828.90; thence South 5,000.00 feet to the Northernmost corner of State Lease No. 19507 having Coordinates of X = 2,262,263.00 and Y = 219,828.90; thence South 56 degrees 36 minutes 48 seconds West 2,686.78 feet along the Northern boundary of said State Lease No. 19507 to its Northwest corner also being the Northernmost corner of State Lease No. 19508 having Coordinates of X = 2,260,019.60 and Y = 218,350.40; thence along the boundary of said State Lease No. 19508 the following courses and distances: South 56 degrees 58 minutes 02 seconds West 3,446.02 feet to a point having Coordinates of X = 2,257,130.60 and Y = 216,471.90 and South 52 degrees 02 minutes 24 seconds East 4,092.26 feet to a point being the Northwest corner of State Lease No. 19506 having Coordinates of X = 2,260,357.10 and Y = 213,954.70; thence West 4,809.81 feet to a point having Coordinates of X = 2,255,547.29 and Y = 213,954.70; thence North 10,874.20 feet to the point of beginning, containing approximately **1,276.02 acres**, all as more particularly outlined on a plat on file in the Office of Mineral Resources, Department of Natural Resources. All bearings, distances and coordinates are based on Louisiana Coordinate System of 1927, (North or South Zone), where applicable.

NOTE: The above description of the Tract nominated for lease has been provided and corrected, where required, exclusively by the nomination party. Any mineral lease selected from this Tract and awarded by the Louisiana State Mineral Board shall be without warranty of any kind, either express, implied, or statutory, including, but not limited to, the implied warranties of merchantability and fitness for a particular purpose. Should the mineral lease awarded by the Louisiana State Mineral Board be subsequently modified, cancelled or abrogated due to the existence of conflicting leases, operating agreements, private claims or other future obligations or conditions which may affect all or any portion of the leased Tract, it shall not relieve the Lessee of the obligation to pay any bonus due thereon to the Louisiana State Mineral Board, nor shall the Louisiana State Mineral Board be obligated to refund any consideration paid by the Lessor prior to such modification, cancellation, or abrogation, including, but not limited to, bonuses, rentals and royalties.

NOTE: The State of Louisiana does hereby reserve, and this lease shall be subject to, the imprescriptible right of surface use in the nature of a servitude in favor of the Department of Natural Resources, including its Offices and Commissions, for the sole purpose of implementing,

constructing, servicing and maintaining approved coastal zone management and/or restoration projects. Utilization of any and all rights derived under this lease by the mineral lessee, its agents, successors or assigns, shall not interfere with nor hinder the reasonable surface use by the Department of Natural Resources, its Offices or Commissions, as herein above reserved.

Applicant: THEOPHILUS OIL, GAS & LAND SERVICES, LLC

Bidder	Cash Payment	Price/Acre	Rental	Oil	Gas	Other

Legend

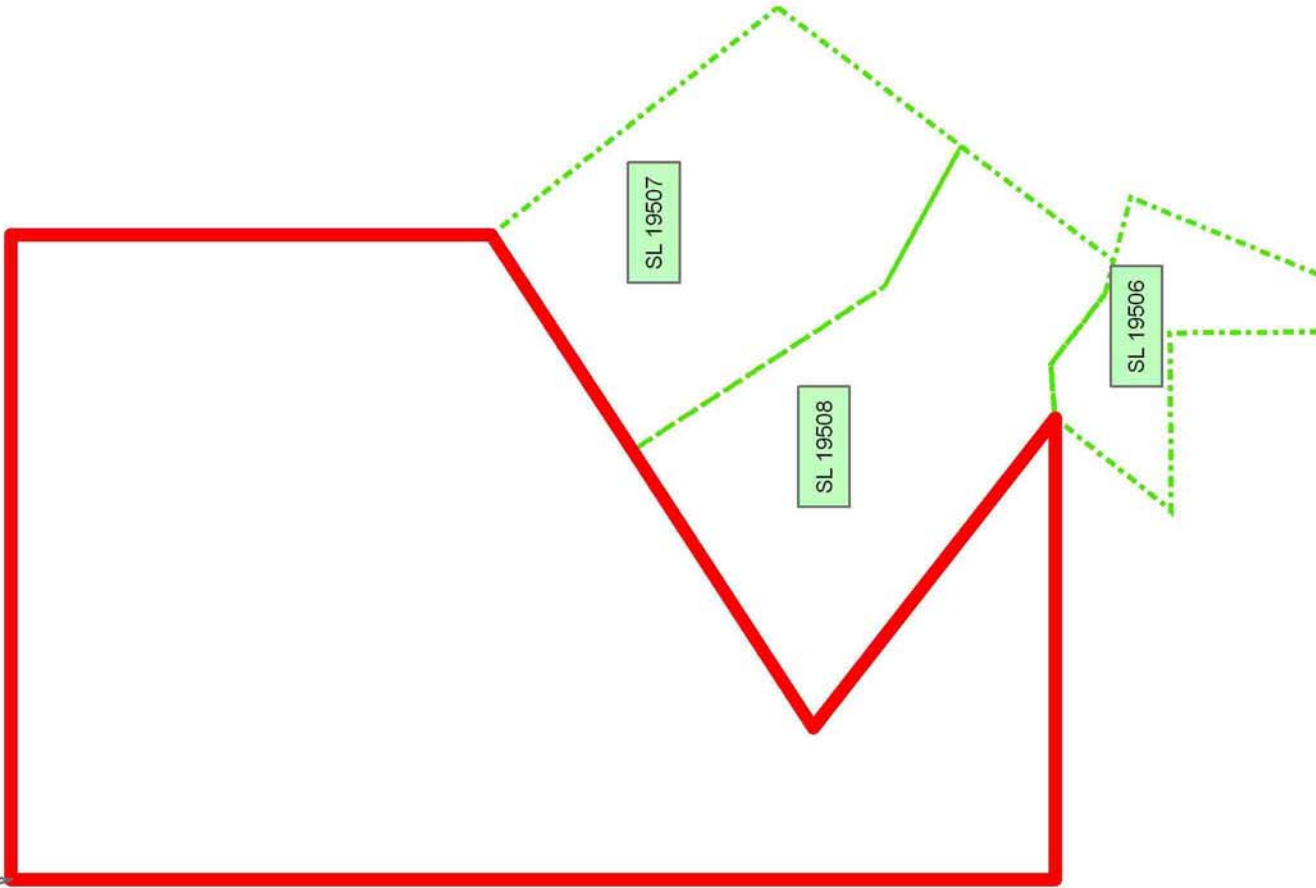
- 08120110
- Active_Leases

TERREBONNE PARISH

P.O.B.



LAKE BARRE



TRACT 40676 - Terrebonne Parish, Louisiana

All of the lands now or formerly constituting the beds and bottoms of all water bodies of every nature and description as to which title is vested in the State of Louisiana, together with all islands arising therein and other lands formed by accretion or by reliction, where allowed by law, excepting tax adjudicated lands, and not presently under mineral lease on December 10, 2008, situated in Terrebonne Parish, Louisiana, and more particularly described as follows: Beginning at a point having Coordinates of X = 2,262,263.00 and Y = 224,828.90; thence East 6,923.27 feet to a point having Coordinates of X = 2,269,186.27 and Y = 224,828.90; thence South 7,988.20 feet to a point having Coordinates of X = 2,269,186.27 and Y = 216,840.70; thence West 4,554.17 feet to the Easternmost corner of State Lease No. 19507 having Coordinates of X = 2,264,632.10 and Y = 216,840.70; thence North 38 degrees 24 minutes 29 seconds West 3,813.39 feet along the boundary of said State Lease No. 19507 to its Northernmost corner having Coordinates of X = 2,262,263.00 and Y = 219,828.90; thence North 5,000.00 feet to the point of beginning, containing approximately **1,188.36 acres**, all as more particularly outlined on a plat on file in the Office of Mineral Resources, Department of Natural Resources. All bearings, distances and coordinates are based on Louisiana Coordinate System of 1927, (North or South Zone), where applicable.

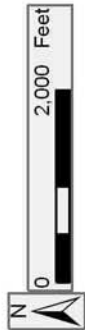
NOTE: The above description of the Tract nominated for lease has been provided and corrected, where required, exclusively by the nomination party. Any mineral lease selected from this Tract and awarded by the Louisiana State Mineral Board shall be without warranty of any kind, either express, implied, or statutory, including, but not limited to, the implied warranties of merchantability and fitness for a particular purpose. Should the mineral lease awarded by the Louisiana State Mineral Board be subsequently modified, cancelled or abrogated due to the existence of conflicting leases, operating agreements, private claims or other future obligations or conditions which may affect all or any portion of the leased Tract, it shall not relieve the Lessee of the obligation to pay any bonus due thereon to the Louisiana State Mineral Board, nor shall the Louisiana State Mineral Board be obligated to refund any consideration paid by the Lessor prior to such modification, cancellation, or abrogation, including, but not limited to, bonuses, rentals and royalties.

NOTE: The State of Louisiana does hereby reserve, and this lease shall be subject to, the imprescriptible right of surface use in the nature of a servitude in favor of the Department of Natural Resources, including its Offices and Commissions, for the sole purpose of implementing, constructing, servicing and maintaining approved coastal zone management and/or restoration projects. Utilization of any and all rights derived under this lease by the mineral lessee, its agents, successors or assigns, shall not interfere with nor hinder the reasonable surface use by the Department of Natural Resources, its Offices or Commissions, as herein above reserved.

Applicant: THEOPHILUS OIL, GAS & LAND SERVICES, LLC

Bidder	Cash Payment	Price/Acre	Rental	Oil	Gas	Other

Legend
08120101
Active_Leases



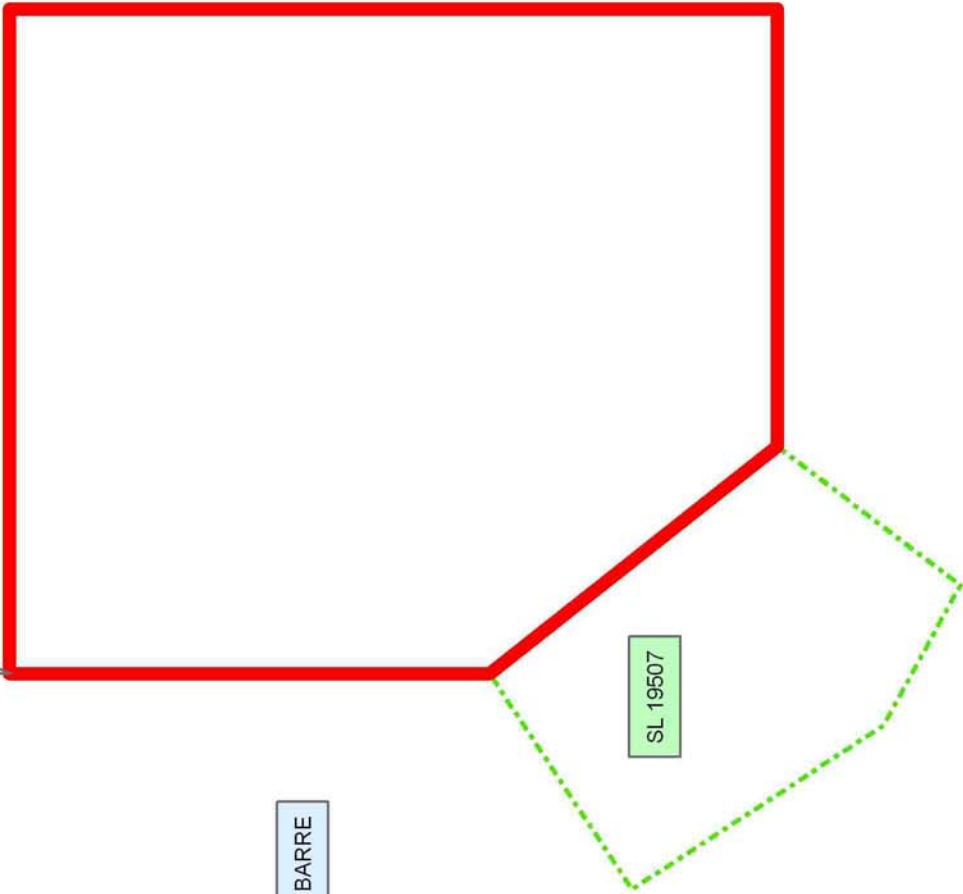
TERREBONNE PARISH

LAKE TAMBOUR

P.O.B.

LAKE BARRE

SL 19507



TRACT 40677 - Terrebonne Parish, Louisiana

All of the lands now or formerly constituting the beds and bottoms of all water bodies of every nature and description as to which title is vested in the State of Louisiana, together with all islands arising therein and other lands formed by accretion or by reliction, where allowed by law, excepting tax adjudicated lands, and not presently under mineral lease on December 10, 2008, situated in Terrebonne Parish, Louisiana, and more particularly described as follows: Beginning at a point having Coordinates of X = 2,269,186.27 and Y = 224,828.90; thence East 5,272.93 feet to a point having Coordinates of X = 2,274,459.20 and Y = 224,828.90; thence South 7,988.20 feet to a point having Coordinates of X = 2,274,459.20 and Y = 216,840.70; thence West 5,272.93 feet to a point having Coordinates of X = 2,269,186.27 and Y = 216,840.70; thence North 7,988.20 feet to the point of beginning, containing approximately **966.97 acres**, all as more particularly outlined on a plat on file in the Office of Mineral Resources, Department of Natural Resources. All bearings, distances and coordinates are based on Louisiana Coordinate System of 1927, (North or South Zone), where applicable.

NOTE: The above description of the Tract nominated for lease has been provided and corrected, where required, exclusively by the nomination party. Any mineral lease selected from this Tract and awarded by the Louisiana State Mineral Board shall be without warranty of any kind, either express, implied, or statutory, including, but not limited to, the implied warranties of merchantability and fitness for a particular purpose. Should the mineral lease awarded by the Louisiana State Mineral Board be subsequently modified, cancelled or abrogated due to the existence of conflicting leases, operating agreements, private claims or other future obligations or conditions which may affect all or any portion of the leased Tract, it shall not relieve the Lessee of the obligation to pay any bonus due thereon to the Louisiana State Mineral Board, nor shall the Louisiana State Mineral Board be obligated to refund any consideration paid by the Lessor prior to such modification, cancellation, or abrogation, including, but not limited to, bonuses, rentals and royalties.

NOTE: The State of Louisiana does hereby reserve, and this lease shall be subject to, the imprescriptible right of surface use in the nature of a servitude in favor of the Department of Natural Resources, including its Offices and Commissions, for the sole purpose of implementing, constructing, servicing and maintaining approved coastal zone management and/or restoration projects. Utilization of any and all rights derived under this lease by the mineral lessee, its agents, successors or assigns, shall not interfere with nor hinder the reasonable surface use by the Department of Natural Resources, its Offices or Commissions, as herein above reserved.

Applicant: THEOPHILUS OIL, GAS & LAND SERVICES, LLC

Bidder	Cash Payment	Price/Acre	Rental	Oil	Gas	Other



TERREBONNE PARISH

LAKE TAMBOUR

P.O.B.



LAKE BARRE

TRACT 40678 - Terrebonne Parish, Louisiana

All of the lands now or formerly constituting the beds and bottoms of all water bodies of every nature and description as to which title is vested in the State of Louisiana, together with all islands arising therein and other lands formed by accretion or by reliction, where allowed by law, excepting tax adjudicated lands, and not presently under mineral lease on December 10, 2008, situated in Terrebonne Parish, Louisiana, and more particularly described as follows: Beginning at a point having Coordinates of X = 2,274,459.20 and Y = 224,828.90; thence East 4,788.00 feet to a point having Coordinates of X = 2,279,247.20 and Y = 224,828.90; thence South 7,988.20 feet to a point having Coordinates of X = 2,279,247.20 and Y = 216,840.70; thence West 4,788.00 feet to a point having Coordinates of X = 2,274,459.20 and Y = 216,840.70; thence North 7,988.20 feet to the point of beginning, containing approximately **878.04 acres**, all as more particularly outlined on a plat on file in the Office of Mineral Resources, Department of Natural Resources. All bearings, distances and coordinates are based on Louisiana Coordinate System of 1927, (North or South Zone), where applicable.

NOTE: The above description of the Tract nominated for lease has been provided and corrected, where required, exclusively by the nomination party. Any mineral lease selected from this Tract and awarded by the Louisiana State Mineral Board shall be without warranty of any kind, either express, implied, or statutory, including, but not limited to, the implied warranties of merchantability and fitness for a particular purpose. Should the mineral lease awarded by the Louisiana State Mineral Board be subsequently modified, cancelled or abrogated due to the existence of conflicting leases, operating agreements, private claims or other future obligations or conditions which may affect all or any portion of the leased Tract, it shall not relieve the Lessee of the obligation to pay any bonus due thereon to the Louisiana State Mineral Board, nor shall the Louisiana State Mineral Board be obligated to refund any consideration paid by the Lessor prior to such modification, cancellation, or abrogation, including, but not limited to, bonuses, rentals and royalties.

NOTE: The State of Louisiana does hereby reserve, and this lease shall be subject to, the imprescriptible right of surface use in the nature of a servitude in favor of the Department of Natural Resources, including its Offices and Commissions, for the sole purpose of implementing, constructing, servicing and maintaining approved coastal zone management and/or restoration projects. Utilization of any and all rights derived under this lease by the mineral lessee, its agents, successors or assigns, shall not interfere with nor hinder the reasonable surface use by the Department of Natural Resources, its Offices or Commissions, as herein above reserved.

Applicant: THEOPHILUS OIL, GAS & LAND SERVICES, LLC

Bidder	Cash Payment	Price/Acre	Rental	Oil	Gas	Other



TERREBONNE PARISH

P.O.B.



LAKE BARRE

TRACT 40679 - Lafourche Parish, Louisiana

All of the lands now or formerly constituting the beds and bottoms of all water bodies of every nature and description as to which title is vested in the State of Louisiana, together with all islands arising therein and other lands formed by accretion or by reliction, where allowed by law, excepting tax adjudicated lands, and not presently under mineral lease on December 10, 2008, situated in Lafourche Parish, Louisiana, and more particularly described as follows: Beginning at a point having Coordinates of X = 2,302,800.00 and Y = 222,400.00; thence East 7,390.39 feet to a point on the boundary of State Lease No. 4534, as amended, having Coordinates of X = 2,310,190.39 and Y = 222,400.00; thence along the boundary of said State Lease No. 4534 the following three courses: thence along a curve to the left having a cord bearing and distance of South 54 Degrees 32 Minutes 38 Seconds West 1,792.86 feet with a radius of 6,100.00 feet and an arc length of 1,799.38 feet; thence along curve to the left having a cord bearing and distance of South 18 Degrees 53 Minutes 10 Seconds West 2,008.11 feet with a radius of 2,220.00 feet and an arc length of 2,083.77 feet to the Southernmost point of said State Lease No. 4534, also being a point on the boundary of State Lease No. 1450, as amended having Coordinates of X = 2,308,068.28 and Y = 219,978.48; thence along the boundary of said State Lease No. 1450, as amended, to a point having Coordinates of X = 2,308,560.01 and Y = 218,180.00; thence along the boundary of said State Lease 1450 the following courses: South 56 Degrees 10 Minutes 59 Seconds East 3,290.12 feet to a point having Coordinates of X = 2,311,293.50 and Y = 216,348.90; thence South 24 Degrees 50 Minutes 18 Seconds West 1,216.46 feet to a point having Coordinates of X = 2,310,782.51 and Y = 215,244.97; thence North 82 Degrees 33 Minutes 22 Seconds East 5,352.88 feet to a point on the boundary of said State Lease No. 1450, as amended, also being the Northwest corner of State Lease No. 16564, as amended, having Coordinates of X = 2,316,090.28 and Y = 215,938.46; thence along the boundary of said State Lease No. 16564, as amended, the following fourteen courses: South 16 Degrees 46 Minutes 00 Seconds East 506.27 feet; thence South 35 Degrees 42 Minutes 22 Seconds East 518.06 feet; thence South 50 Degrees 34 Minutes 18 Seconds East 306.82 feet; thence South 62 Degrees 59 Minutes 26 Seconds East 274.52 feet; thence South 74 Degrees 34 Minutes 39 Seconds East 471.63 feet; thence South 85 Degrees 50 Minutes 30 Seconds East 404.53 feet; thence North 82 Degrees 51 Minutes 27 Seconds East 199.74 feet; thence North 70 Degrees 35 Minutes 48 Seconds East 158.77 feet; thence North 54 Degrees 30 Minutes 50 Seconds East 169.38 feet; thence North 41 Degrees 58 Minutes 03 Seconds East 215.90 feet; thence North 29 Degrees 38 Minutes 32 Seconds East 369.28 feet; thence North 12 Degrees 15 Minutes 56 Seconds East 394.13 feet; thence North 03 Degrees 48 Minutes 16 Seconds East 428.90 feet; thence North 11 Degrees 14 Minutes 26 Seconds East 276.09 feet to the Northeast corner of said State Lease No. 16564, as amended, also being a point on the boundary of State Lease No. 1451, as amended, having Coordinates of X = 2,318,857.24 and Y = 216,300.02; thence South 2,900.02 feet to a point having Coordinates of X = 2,318,857.24 and Y = 213,400.00; thence West 16,057.24 feet to a point having Coordinates

of X = 2,302,800.00 and Y = 213,400.00; thence North 9,000.00 feet to the point of beginning, containing approximately **1,429 acres**, all as more particularly outlined on a plat on file in the Office of Mineral Resources, Department of Natural Resources. All bearings, distances and coordinates are based on Louisiana Coordinate System of 1927, (North or South Zone), where applicable.

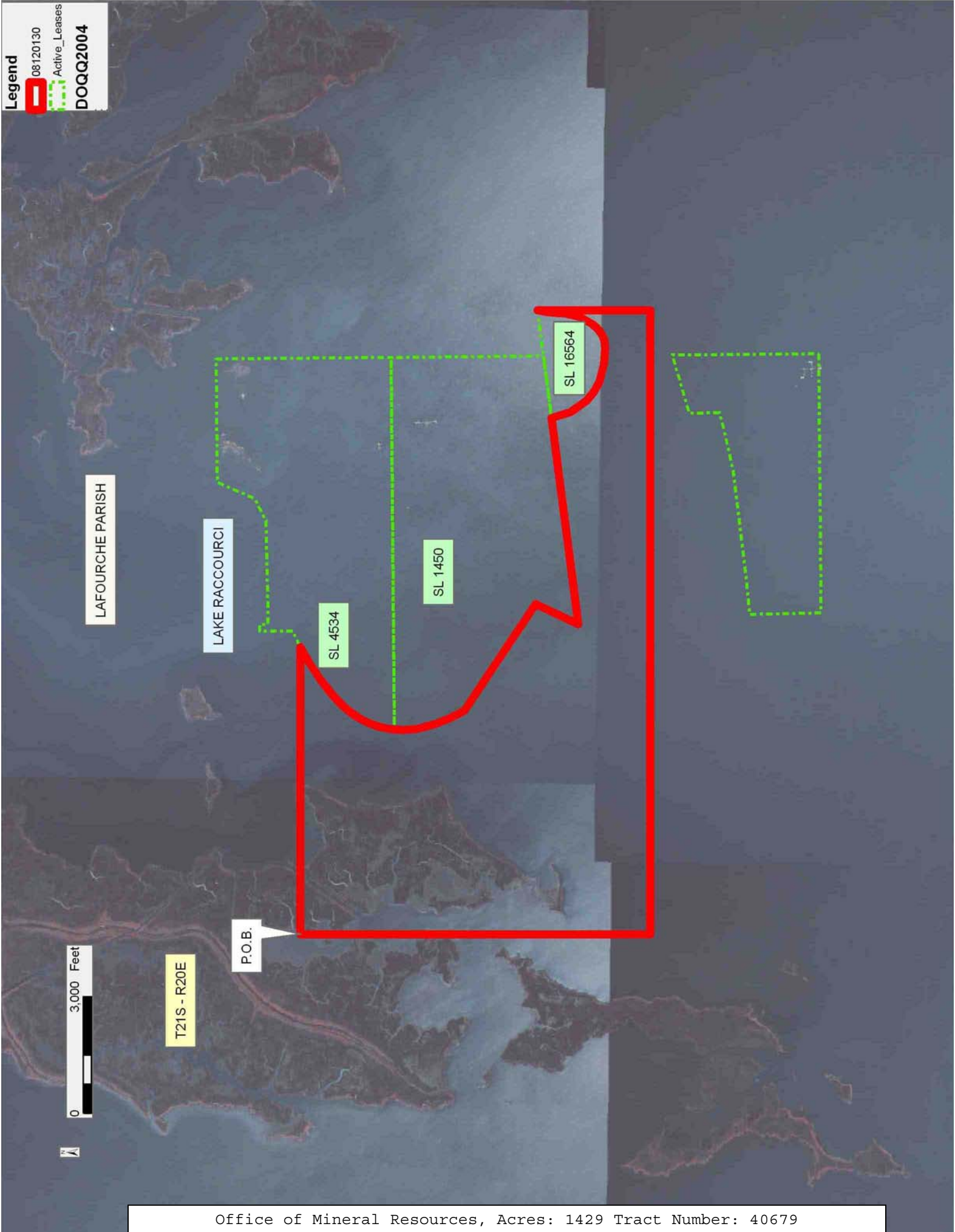
NOTE: The above description of the Tract nominated for lease has been provided and corrected, where required, exclusively by the nomination party. Any mineral lease selected from this Tract and awarded by the Louisiana State Mineral Board shall be without warranty of any kind, either express, implied, or statutory, including, but not limited to, the implied warranties of merchantability and fitness for a particular purpose. Should the mineral lease awarded by the Louisiana State Mineral Board be subsequently modified, cancelled or abrogated due to the existence of conflicting leases, operating agreements, private claims or other future obligations or conditions which may affect all or any portion of the leased Tract, it shall not relieve the Lessee of the obligation to pay any bonus due thereon to the Louisiana State Mineral Board, nor shall the Louisiana State Mineral Board be obligated to refund any consideration paid by the Lessor prior to such modification, cancellation, or abrogation, including, but not limited to, bonuses, rentals and royalties.

NOTE: The State of Louisiana does hereby reserve, and this lease shall be subject to, the imprescriptible right of surface use in the nature of a servitude in favor of the Department of Natural Resources, including its Offices and Commissions, for the sole purpose of implementing, constructing, servicing and maintaining approved coastal zone management and/or restoration projects. Utilization of any and all rights derived under this lease by the mineral lessee, its agents, successors or assigns, shall not interfere with nor hinder the reasonable surface use by the Department of Natural Resources, its Offices or Commissions, as herein above reserved.

Applicant: SPECTER EXPLORATION, INC.

Bidder	Cash Payment	Price/Acre	Rental	Oil	Gas	Other

Legend
08120130
Active_Leases
DOQQ2004



TRACT 40680 - Lafourche Parish, Louisiana

All of the lands now or formerly constituting the beds and bottoms of all water bodies of every nature and description as to which title is vested in the State of Louisiana, together with all islands arising therein and other lands formed by accretion or by reliction, where allowed by law, excepting tax adjudicated lands, and not presently under mineral lease on December 10, 2008, situated in Lafourche Parish, Louisiana, and more particularly described as follows: Beginning at a point having Coordinates of X = 2,336,500.00 and Y = 218,400.00; thence South 6,000.00 feet to a point having Coordinates of X = 2,336,500.00 and Y = 212,400.00; thence West 15,784.79 feet to a point on the East line of State Lease No. 1451, as amended, having Coordinates of X = 2,320,715.21 and Y = 212,400.00; thence North 00 Degrees 29 Minutes 42 Seconds West 1,301.03 feet to the Northeast corner of said State Lease No. 1451, as amended, having Coordinates of X = 2,320,703.97 and Y = 213,700.98; thence South 72 Degrees 40 Minutes 49 Seconds West 1,934.44 feet to a point on the North line of said State Lease No. 1451, as amended, having Coordinates of X = 2,318,857.24 and Y = 213,125.09; thence North 3,174.90 feet to a point on the Southern boundary of State Lease No. 1451, as amended, also being the Northernmost point of State Lease No. 16564, as amended, having Coordinates of X = 2,318,857.24 and Y = 216,299.99; thence along the boundary of State Lease No. 1451, as amended, the following eight courses: North 82 Degrees 33 Minutes 22 Seconds East 386.01 feet; thence North 78 Degrees 31 Minutes 05 Seconds East 653.07 feet; thence North 72 Degrees 58 Minutes 46 Seconds East 512.45 feet; thence North 66 Degrees 48 Minutes 05 Seconds East 533.10 feet; thence North 60 Degrees 45 Minutes 04 Seconds East 573.06 feet; thence North 56 Degrees 29 Minutes 48 Seconds East 851.47 feet; thence North 52 Degrees 45 Minutes 55 Seconds East 1,261.40 feet; thence North 00 Degrees 29 Minutes 46 Seconds West 46.75 feet to a point on the boundary of said State Lease No. 1451, as amended, having Coordinates of X = 2,323,073.87 and Y = 218,400.00; thence East 13,426.13 feet to the point of beginning, containing approximately **1,757 acres**, all as more particularly outlined on a plat on file in the Office of Mineral Resources, Department of Natural Resources. All bearings, distances and coordinates are based on Louisiana Coordinate System of 1927, (North or South Zone), where applicable.

NOTE: The above description of the Tract nominated for lease has been provided and corrected, where required, exclusively by the nomination party. Any mineral lease selected from this Tract and awarded by the Louisiana State Mineral Board shall be without warranty of any kind, either express, implied, or statutory, including, but not limited to, the implied warranties of merchantability and fitness for a particular purpose. Should the mineral lease awarded by the Louisiana State Mineral Board be subsequently modified, cancelled or abrogated due to the existence of conflicting leases, operating agreements, private claims or other future obligations or conditions which may affect all or any portion of the leased Tract, it shall not relieve the Lessee of the obligation to pay any bonus due thereon to the Louisiana State Mineral Board, nor shall

the Louisiana State Mineral Board be obligated to refund any consideration paid by the Lessor prior to such modification, cancellation, or abrogation, including, but not limited to, bonuses, rentals and royalties.

NOTE: The State of Louisiana does hereby reserve, and this lease shall be subject to, the imprescriptible right of surface use in the nature of a servitude in favor of the Department of Natural Resources, including its Offices and Commissions, for the sole purpose of implementing, constructing, servicing and maintaining approved coastal zone management and/or restoration projects. Utilization of any and all rights derived under this lease by the mineral lessee, its agents, successors or assigns, shall not interfere with nor hinder the reasonable surface use by the Department of Natural Resources, its Offices or Commissions, as herein above reserved.

Applicant: SPECTER EXPLORATION, INC.

Bidder	Cash Payment	Price/Acre	Rental	Oil	Gas	Other

Legend
08120127
Active_Leases
DOQQ2004

