

**TRACT 40661 - Lafourche Parish, Louisiana**

All of the lands now or formerly constituting the beds and bottoms of all water bodies of every nature and description as to which title is vested in the State of Louisiana, together with all islands arising therein and other lands formed by accretion or by reliction, where allowed by law, excepting tax adjudicated lands, and not presently under mineral lease on December 10, 2008, situated in Lafourche Parish, Louisiana, and more particularly described as follows: Beginning at a point having Coordinates of X = 2,318,000.00 and Y = 236,400.00; thence East 18,000.00 feet to a point having Coordinates of X = 2,336,000.00 and Y = 236,400.00; thence South 6,000.00 feet to a point having Coordinates of X = 2,336,000.00 and Y = 230,400.00; thence West 18,000.00 feet to a point having Coordinates of X = 2,318,000.00 and Y = 230,400.00; thence North 6,000.00 feet to the point of beginning, containing approximately **490 acres**, all as more particularly outlined on a plat on file in the Office of Mineral Resources, Department of Natural Resources. All bearings, distances and coordinates are based on Louisiana Coordinate System of 1927, (North or South Zone), where applicable.

NOTE: The above description of the Tract nominated for lease has been provided and corrected, where required, exclusively by the nomination party. Any mineral lease selected from this Tract and awarded by the Louisiana State Mineral Board shall be without warranty of any kind, either express, implied, or statutory, including, but not limited to, the implied warranties of merchantability and fitness for a particular purpose. Should the mineral lease awarded by the Louisiana State Mineral Board be subsequently modified, cancelled or abrogated due to the existence of conflicting leases, operating agreements, private claims or other future obligations or conditions which may affect all or any portion of the leased Tract, it shall not relieve the Lessee of the obligation to pay any bonus due thereon to the Louisiana State Mineral Board, nor shall the Louisiana State Mineral Board be obligated to refund any consideration paid by the Lessor prior to such modification, cancellation, or abrogation, including, but not limited to, bonuses, rentals and royalties.

NOTE: The State of Louisiana does hereby reserve, and this lease shall be subject to, the imprescriptible right of surface use in the nature of a servitude in favor of the Department of Natural Resources, including its Offices and Commissions, for the sole purpose of implementing, constructing, servicing and maintaining approved coastal zone management and/or restoration projects. Utilization of any and all rights derived under this lease by the mineral lessee, its agents, successors or assigns, shall not interfere with nor hinder the reasonable surface use by the Department of Natural Resources, its Offices or Commissions, as herein above reserved.

Applicant: SPECTER EXPLORATION, INC.

Bidder	Cash Payment	Price/ Acre	Rental	Oil	Gas	Other

LAFOURCHE PARISH

GRAND BAYOU BLUE

LACROIX BAY

BAYOU TETE DE OURS

P.O.B.

BAY COURANT



**TRACT 40662 - Lafourche Parish, Louisiana**

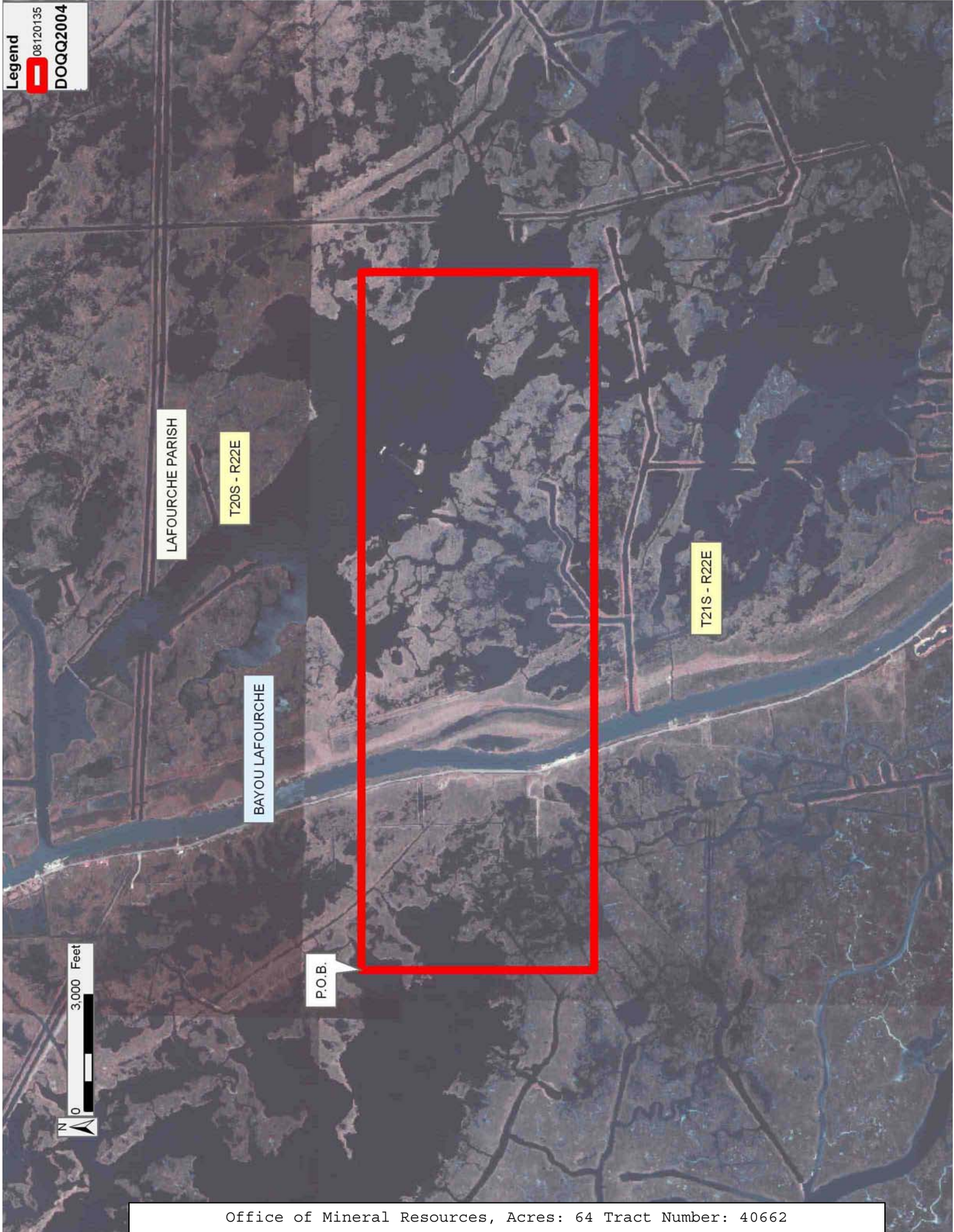
All of the lands now or formerly constituting the beds and bottoms of all water bodies of every nature and description as to which title is vested in the State of Louisiana, together with all islands arising therein and other lands formed by accretion or by reliction, where allowed by law, excepting tax adjudicated lands, and not presently under mineral lease on December 10, 2008, situated in Lafourche Parish, Louisiana, and more particularly described as follows: Beginning at a point having Coordinates of X = 2,345,000.00 feet and Y = 236,400.00 feet; thence East 18,000.00 feet to a point having Coordinates of X = 2,363,000.00 feet and Y = 236,400.00 feet; thence South 6,000.00 feet to a point having Coordinates of X = 2,363,000.00 feet and Y = 230,400.00 feet; thence West 18,000.00 feet to Coordinates of X = 2,345,000.00 feet and Y = 230,400.00 feet; thence North 6,000.00 feet to the point of beginning, containing approximately **64 acres**, all as more particularly outlined on a plat on file in the Office of Mineral Resources, Department of Natural Resources. All bearings, distances and coordinates are based on Louisiana Coordinate System of 1927, (North or South Zone), where applicable.

NOTE: The above description of the Tract nominated for lease has been provided and corrected, where required, exclusively by the nomination party. Any mineral lease selected from this Tract and awarded by the Louisiana State Mineral Board shall be without warranty of any kind, either express, implied, or statutory, including, but not limited to, the implied warranties of merchantability and fitness for a particular purpose. Should the mineral lease awarded by the Louisiana State Mineral Board be subsequently modified, cancelled or abrogated due to the existence of conflicting leases, operating agreements, private claims or other future obligations or conditions which may affect all or any portion of the leased Tract, it shall not relieve the Lessee of the obligation to pay any bonus due thereon to the Louisiana State Mineral Board, nor shall the Louisiana State Mineral Board be obligated to refund any consideration paid by the Lessor prior to such modification, cancellation, or abrogation, including, but not limited to, bonuses, rentals and royalties.

NOTE: The State of Louisiana does hereby reserve, and this lease shall be subject to, the imprescriptible right of surface use in the nature of a servitude in favor of the Department of Natural Resources, including its Offices and Commissions, for the sole purpose of implementing, constructing, servicing and maintaining approved coastal zone management and/or restoration projects. Utilization of any and all rights derived under this lease by the mineral lessee, its agents, successors or assigns, shall not interfere with nor hinder the reasonable surface use by the Department of Natural Resources, its Offices or Commissions, as herein above reserved.

Applicant: SPECTER EXPLORATION, INC.

Bidder	Cash Payment	Price/ Acre	Rental	Oil	Gas	Other



**TRACT 40663 - Terrebonne Parish, Louisiana**

All of the lands now or formerly constituting the beds and bottoms of all water bodies of every nature and description as to which title is vested in the State of Louisiana, together with all islands arising therein and other lands formed by accretion or by reliction, where allowed by law, excepting tax adjudicated lands, and not presently under mineral lease on December 10, 2008, situated in Terrebonne Parish, Louisiana, and more particularly described as follows: Beginning at a point having Coordinates of X = 2,120,200.00 and Y = 237,800.00; thence East 18,000.00 feet to a point having Coordinates of X = 2,138,200.00 and Y = 237,800.00; thence South 6,000.00 feet to a point having Coordinates of X = 2,138,200.00 and Y = 231,800.00; thence West 18,000.00 feet to a point having Coordinates of X = 2,120,200.00 and Y = 231,800.00; thence North 6,000.00 feet to the point of beginning, containing approximately **1,792 acres**, all as more particularly outlined on a plat on file in the Office of Mineral Resources, Department of Natural Resources. All bearings, distances and coordinates are based on Louisiana Coordinate System of 1927, (North or South Zone), where applicable.

NOTE: The above description of the Tract nominated for lease has been provided and corrected, where required, exclusively by the nomination party. Any mineral lease selected from this Tract and awarded by the Louisiana State Mineral Board shall be without warranty of any kind, either express, implied, or statutory, including, but not limited to, the implied warranties of merchantability and fitness for a particular purpose. Should the mineral lease awarded by the Louisiana State Mineral Board be subsequently modified, cancelled or abrogated due to the existence of conflicting leases, operating agreements, private claims or other future obligations or conditions which may affect all or any portion of the leased Tract, it shall not relieve the Lessee of the obligation to pay any bonus due thereon to the Louisiana State Mineral Board, nor shall the Louisiana State Mineral Board be obligated to refund any consideration paid by the Lessor prior to such modification, cancellation, or abrogation, including, but not limited to, bonuses, rentals and royalties.

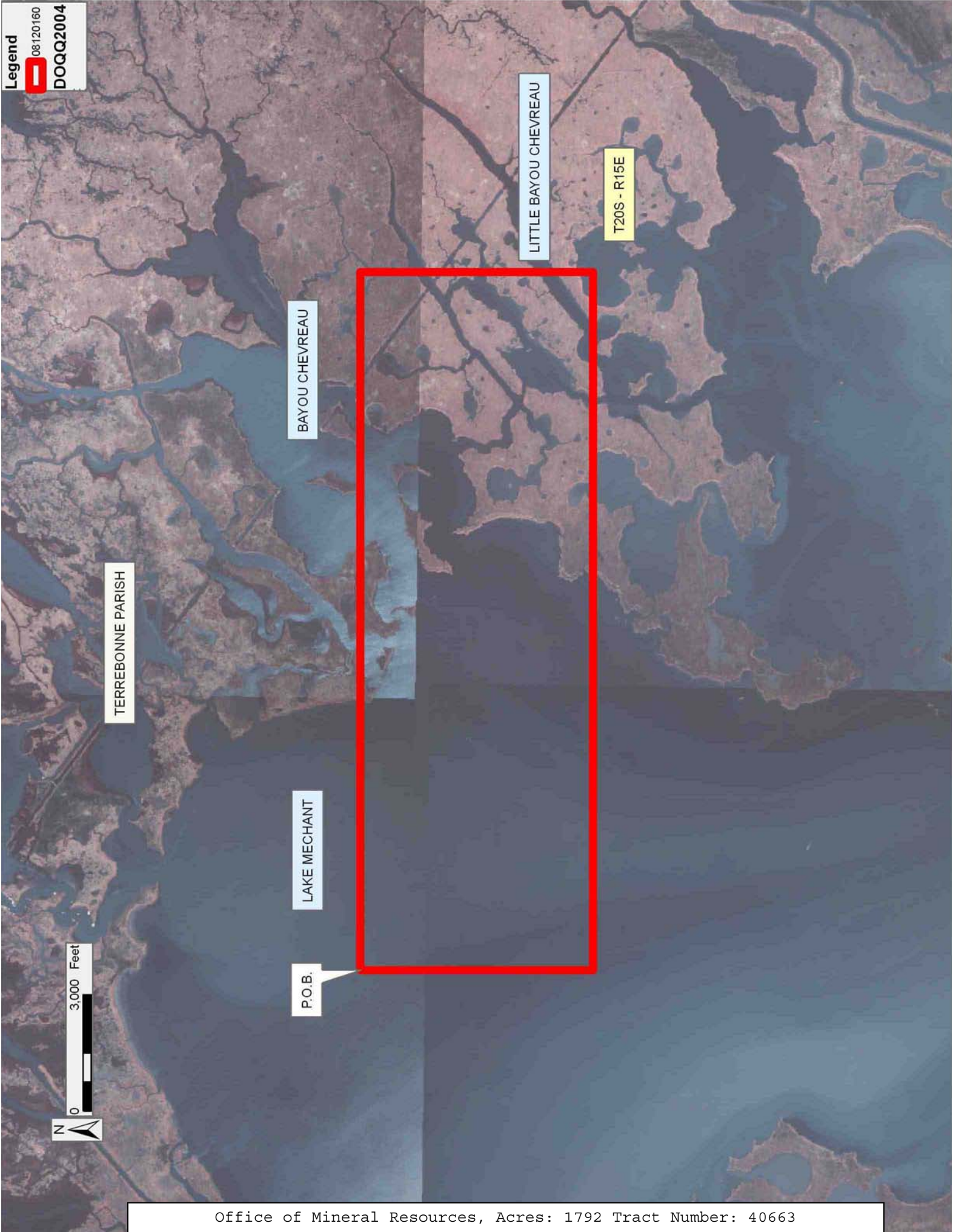
NOTE: This tract is located in an area designated by the Louisiana Legislature or the Wildlife and Fisheries Commission as a Public Oyster Seed Ground or Reservation. Surface activity within the boundaries of these designated Public Oyster Seed Grounds or Reservations is prohibited.

NOTE: The State of Louisiana does hereby reserve, and this lease shall be subject to, the imprescriptible right of surface use in the nature of a servitude in favor of the Department of Natural Resources, including its Offices and Commissions, for the sole purpose of implementing, constructing, servicing and maintaining approved coastal zone management and/or restoration projects. Utilization of any and all rights derived under this lease by the mineral lessee, its agents, successors or assigns, shall not interfere with nor hinder the reasonable surface use by the

Department of Natural Resources, its Offices or Commissions, as herein above reserved.

Applicant: AMEX RESOURCES, INC.

Bidder	Cash Payment	Price/ Acre	Rental	Oil	Gas	Other



TERREBONNE PARISH

BAYOU CHEVREAU

LITTLE BAYOU CHEVREAU

T20S - R15E

LAKE MECHANT

P.O.B.



**TRACT 40664 - Terrebonne Parish, Louisiana**

All of the lands now or formerly constituting the beds and bottoms of all water bodies of every nature and description as to which title is vested in the State of Louisiana, together with all islands arising therein and other lands formed by accretion or by reliction, where allowed by law, excepting tax adjudicated lands, and not presently under mineral lease on December 10, 2008, situated in Terrebonne Parish, Louisiana, and more particularly described as follows: Beginning at a point having Coordinates of X = 2,102,200.00 and Y = 237,800.00; thence East 18,000.00 feet to a point having Coordinates of X = 2,120,200.00 and Y = 237,800.00; thence South 6,000.00 feet to a point having Coordinates of X = 2,120,200.00 and Y = 231,800.00; thence West 18,000.00 feet to a point having Coordinates of X = 2,102,200.00 and Y = 231,800.00; thence North 6,000.00 feet to the point of beginning, containing approximately **2,358 acres**, all as more particularly outlined on a plat on file in the Office of Mineral Resources, Department of Natural Resources. All bearings, distances and coordinates are based on Louisiana Coordinate System of 1927, (North or South Zone), where applicable.

NOTE: The above description of the Tract nominated for lease has been provided and corrected, where required, exclusively by the nomination party. Any mineral lease selected from this Tract and awarded by the Louisiana State Mineral Board shall be without warranty of any kind, either express, implied, or statutory, including, but not limited to, the implied warranties of merchantability and fitness for a particular purpose. Should the mineral lease awarded by the Louisiana State Mineral Board be subsequently modified, cancelled or abrogated due to the existence of conflicting leases, operating agreements, private claims or other future obligations or conditions which may affect all or any portion of the leased Tract, it shall not relieve the Lessee of the obligation to pay any bonus due thereon to the Louisiana State Mineral Board, nor shall the Louisiana State Mineral Board be obligated to refund any consideration paid by the Lessor prior to such modification, cancellation, or abrogation, including, but not limited to, bonuses, rentals and royalties.

NOTE: This tract is located in an area designated by the Louisiana Legislature or the Wildlife and Fisheries Commission as a Public Oyster Seed Ground or Reservation. Surface activity within the boundaries of these designated Public Oyster Seed Grounds or Reservations is prohibited.

NOTE: The State of Louisiana does hereby reserve, and this lease shall be subject to, the imprescriptible right of surface use in the nature of a servitude in favor of the Department of Natural Resources, including its Offices and Commissions, for the sole purpose of implementing, constructing, servicing and maintaining approved coastal zone management and/or restoration projects. Utilization of any and all rights derived under this lease by the mineral lessee, its agents, successors or assigns, shall not interfere with nor hinder the reasonable surface use by the

Department of Natural Resources, its Offices or Commissions, as herein above reserved.

Applicant: AMEX RESOURCES, INC.

Bidder	Cash Payment	Price/ Acre	Rental	Oil	Gas	Other



**TRACT 40665 - Terrebonne Parish, Louisiana**

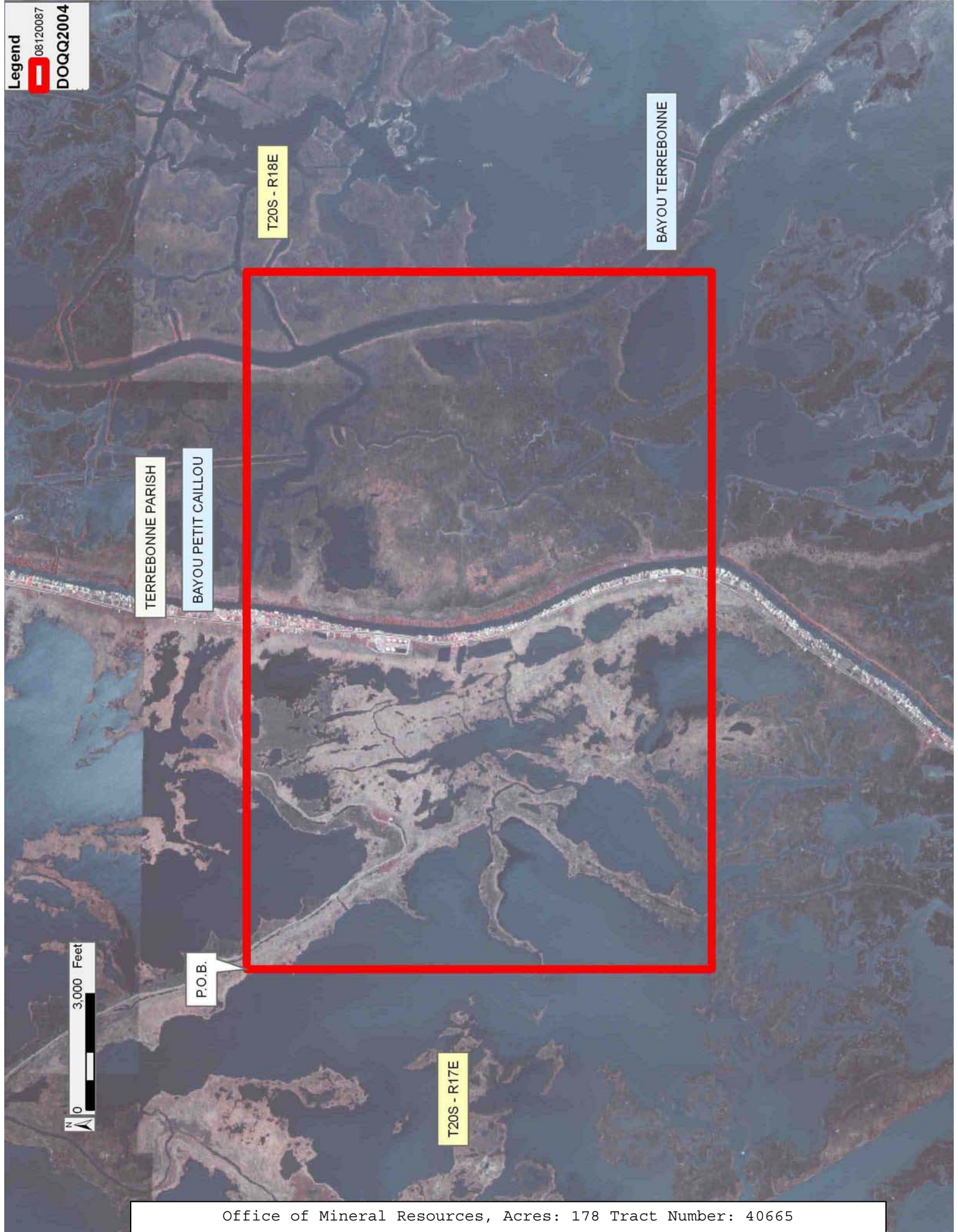
All of the lands now or formerly constituting the beds and bottoms of all water bodies of every nature and description as to which title is vested in the State of Louisiana, together with all islands arising therein and other lands formed by accretion or by reliction, where allowed by law, excepting tax adjudicated lands, and not presently under mineral lease on December 10, 2008, situated in Terrebonne Parish, Louisiana, and more particularly described as follows: Beginning at a point having Coordinates of X = 2,209,600.00 and Y = 234,000.00; thence East 18,000.00 feet to a point having Coordinates of X = 2,227,600.00 and Y = 234,000.00; thence South 12,000.00 feet to a point having Coordinates of X = 2,227,600.00 and Y = 222,000.00; thence West 18,000.00 feet to a point having Coordinates of X = 2,209,600.00 and Y = 222,000.00; thence North 12,000.00 feet to the point of beginning, containing approximately **178 acres**, all as more particularly outlined on a plat on file in the Office of Mineral Resources, Department of Natural Resources. All bearings, distances and coordinates are based on Louisiana Coordinate System of 1927, (North or South Zone), where applicable.

NOTE: The above description of the Tract nominated for lease has been provided and corrected, where required, exclusively by the nomination party. Any mineral lease selected from this Tract and awarded by the Louisiana State Mineral Board shall be without warranty of any kind, either express, implied, or statutory, including, but not limited to, the implied warranties of merchantability and fitness for a particular purpose. Should the mineral lease awarded by the Louisiana State Mineral Board be subsequently modified, cancelled or abrogated due to the existence of conflicting leases, operating agreements, private claims or other future obligations or conditions which may affect all or any portion of the leased Tract, it shall not relieve the Lessee of the obligation to pay any bonus due thereon to the Louisiana State Mineral Board, nor shall the Louisiana State Mineral Board be obligated to refund any consideration paid by the Lessor prior to such modification, cancellation, or abrogation, including, but not limited to, bonuses, rentals and royalties.

NOTE: The State of Louisiana does hereby reserve, and this lease shall be subject to, the imprescriptible right of surface use in the nature of a servitude in favor of the Department of Natural Resources, including its Offices and Commissions, for the sole purpose of implementing, constructing, servicing and maintaining approved coastal zone management and/or restoration projects. Utilization of any and all rights derived under this lease by the mineral lessee, its agents, successors or assigns, shall not interfere with nor hinder the reasonable surface use by the Department of Natural Resources, its Offices or Commissions, as herein above reserved.

Applicant: PETRO-LAND RESOURCES, INC.

Bidder	Cash Payment	Price/ Acre	Rental	Oil	Gas	Other



**TRACT 40666 - Terrebonne Parish, Louisiana**

All of the lands now or formerly constituting the beds and bottoms of all water bodies of every nature and description as to which title is vested in the State of Louisiana, together with all islands arising therein and other lands formed by accretion or by reliction, where allowed by law, excepting tax adjudicated lands, and not presently under mineral lease on December 10, 2008, situated in Terrebonne Parish, Louisiana, and more particularly described as follows: Beginning at a point having Coordinates of X = 2,227,600.00 and Y = 234,000.00; thence East 18,000.00 feet to a point having Coordinates of X = 2,245,600.00 and Y = 234,000.00; thence South 6,000.00 feet to a point having Coordinates of X = 2,245,600.00 and Y = 228,000.00; thence West 18,000.00 feet to a point having Coordinates of X = 2,227,600.00 and Y = 228,000.00; thence North 6,000.00 feet to the point of beginning, containing approximately **1,761 acres**, all as more particularly outlined on a plat on file in the Office of Mineral Resources, Department of Natural Resources. All bearings, distances and coordinates are based on Louisiana Coordinate System of 1927, (North or South Zone), where applicable.

NOTE: The above description of the Tract nominated for lease has been provided and corrected, where required, exclusively by the nomination party. Any mineral lease selected from this Tract and awarded by the Louisiana State Mineral Board shall be without warranty of any kind, either express, implied, or statutory, including, but not limited to, the implied warranties of merchantability and fitness for a particular purpose. Should the mineral lease awarded by the Louisiana State Mineral Board be subsequently modified, cancelled or abrogated due to the existence of conflicting leases, operating agreements, private claims or other future obligations or conditions which may affect all or any portion of the leased Tract, it shall not relieve the Lessee of the obligation to pay any bonus due thereon to the Louisiana State Mineral Board, nor shall the Louisiana State Mineral Board be obligated to refund any consideration paid by the Lessor prior to such modification, cancellation, or abrogation, including, but not limited to, bonuses, rentals and royalties.

NOTE: The State of Louisiana does hereby reserve, and this lease shall be subject to, the imprescriptible right of surface use in the nature of a servitude in favor of the Department of Natural Resources, including its Offices and Commissions, for the sole purpose of implementing, constructing, servicing and maintaining approved coastal zone management and/or restoration projects. Utilization of any and all rights derived under this lease by the mineral lessee, its agents, successors or assigns, shall not interfere with nor hinder the reasonable surface use by the Department of Natural Resources, its Offices or Commissions, as herein above reserved.

Applicant: PETRO-LAND RESOURCES, INC.

Bidder	Cash Payment	Price/ Acre	Rental	Oil	Gas	Other

TERREBONNE PARISH

T20S - R18E

LAKE BARRE

BAY LA FLEUR

P.O.B.



**TRACT 40667 - Lafourche Parish, Louisiana**

All of the lands now or formerly constituting the beds and bottoms of all water bodies of every nature and description as to which title is vested in the State of Louisiana, together with all islands arising therein and other lands formed by accretion or by reliction, where allowed by law, excepting tax adjudicated lands, and not presently under mineral lease on December 10, 2008, situated in Lafourche Parish, Louisiana, and more particularly described as follows: Beginning at a point having Coordinates of X = 2,305,000.00 and Y = 231,800.00; thence East 13,000.00 feet to a point having Coordinates of X = 2,318,000.00 and Y = 231,800.00; thence South 7,235.54 feet to a point on the North line of State Lease No. 1451, as amended having Coordinates of X = 2,318,000.00 and Y = 224,564.47; thence South 89 degrees 30 minutes 18 seconds West 397.83 feet to a point being the Northwest corner of said State Lease No. 1451, also being the Northeast corner of State Lease No. 4534 as amended to a point having Coordinates of X = 2,317,602.19 and Y = 224,561.03; thence South 89 degrees 30 minutes 18 seconds West 321.32 feet along the Northern boundary of said State Lease No. 4534 to a point on the Eastern boundary of Operating Agreement AO 0280 having Coordinates of X = 2,317,280.88 and Y = 224,558.25; thence along the boundary of said Operating Agreement AO 0280 the following courses: North 01 degrees 22 minutes 55 seconds West 27.78 feet; thence North 01 Degree 22 Minutes 55 Seconds West 106.26 feet; thence North 11 Degrees 39 Minutes 21 Seconds West 147.23 feet; thence North 23 Degrees 32 Minutes 00 Seconds West 137.82 feet; thence North 37 Degrees 07 Minutes 51 Seconds West 137.98 feet; thence North 48 Degrees 49 Minutes 39 Seconds West 173.88 feet; thence North 60 Degrees 54 Minutes 26 Seconds West 165.10 feet; thence North 72 Degrees 03 Minutes 57 Seconds West 164.14 feet; thence North 76 Degrees 03 Minutes 03 Seconds West 223.00 feet; thence North 82 Degrees 03 Minutes 03 Seconds West 204.24 feet; thence North 86 Degrees 29 Minutes 53 Seconds West 219.04 feet; thence South 87 Degrees 43 Minutes 01 Seconds West 252.34 feet; thence South 86 Degrees 38 Minutes 12 Seconds West 286.07 feet; thence South 83 Degrees 22 Minutes 58 Seconds West 167.70 feet; thence South 81 Degrees 15 Minutes 28 Seconds West 215.18 feet; thence South 77 Degrees 59 Minutes 40 Seconds West 214.40 feet; thence South 75 Degrees 25 Minutes 57 Seconds West 307.34 feet; thence South 70 Degrees 14 Minutes 54 Seconds West 234.59 feet; thence South 62 Degrees 58 Minutes 33 Seconds West 323.90 feet; thence South 59 Degrees 25 Minutes 37 Seconds West 249.20 feet; thence South 51 Degrees 54 Minutes 43 Seconds West 245.17 feet; thence South 48 Degrees 53 Minutes 55 Seconds West 241.36 feet; thence South 44 Degrees 04 Minutes 14 Seconds West 181.86 feet; thence South 37 Degrees 44 Minutes 57 Seconds West 129.15 feet; thence South 32 Degrees 07 Minutes 34 Seconds West 145.97 feet; thence South 30 Degrees 01 Minutes 52 Seconds West 78.33 feet; thence South 24 Degrees 30 Minutes 10 Seconds West 102.66 feet; thence South 17 Degrees 57 Minutes 30 Seconds West 97.56 feet; thence South 06 Degrees 39 Minutes 49 Seconds West 122.05 feet; thence South 02 Degrees 50 Minutes 20 Seconds East 119.78 feet; thence South 10 Degrees 28 Minutes 49 Seconds East 86.78 feet; thence South 15 Degrees 09 Minutes 14 Seconds East 128.70 feet; thence South 22 Degrees 07 Minutes 48

Seconds East 110.91 feet; thence South 32 Degrees 30 Minutes 24 Seconds East 129.28 feet to a point on the boundary boundary of State Lease No. 4534, as amended, having Coordinates of X = 2,313,275.47 and Y = 223,276.99; thence along the boundary of said State Lease No. 4534, as amended, the following courses: South 88 Degrees 48 Minutes 52 Seconds West 2,503.82 feet; thence North 01 Degree 11 Minutes 08 Seconds West 220.00 feet; thence South 88 Degrees 41 Minutes 58 Seconds West 167.67 feet; thence South 851.33 feet; thence along a curve to the left having a cord bearing of South 65 Degrees 06 Minutes 55 Seconds West a distance of 451.53 feet with a radius of 6,100.00 feet and an arc length of 451.63 feet to a point on the boundary of said State Lease No. 4534, as amended, having Coordinates of X = 2,310,190.40 and Y = 222,400.00; thence West 5,190.40 feet to a point having Coordinates of X = 2,305,000.00 and Y = 222,400.00; thence North 9,400.00 feet to the point of beginning, containing approximately **2,282 acres**, all as more particularly outlined on a plat on file in the Office of Mineral Resources, Department of Natural Resources. All bearings, distances and coordinates are based on Louisiana Coordinate System of 1927, (North or South Zone), where applicable.

NOTE: The above description of the Tract nominated for lease has been provided and corrected, where required, exclusively by the nomination party. Any mineral lease selected from this Tract and awarded by the Louisiana State Mineral Board shall be without warranty of any kind, either express, implied, or statutory, including, but not limited to, the implied warranties of merchantability and fitness for a particular purpose. Should the mineral lease awarded by the Louisiana State Mineral Board be subsequently modified, cancelled or abrogated due to the existence of conflicting leases, operating agreements, private claims or other future obligations or conditions which may affect all or any portion of the leased Tract, it shall not relieve the Lessee of the obligation to pay any bonus due thereon to the Louisiana State Mineral Board, nor shall the Louisiana State Mineral Board be obligated to refund any consideration paid by the Lessor prior to such modification, cancellation, or abrogation, including, but not limited to, bonuses, rentals and royalties.

NOTE: This tract is located in an area designated by the Louisiana Legislature or the Wildlife and Fisheries Commission as a Public Oyster Seed Ground, Reservation, or area of Calcasieu or Sabine Lake. Proposed projects occurring in these areas will be evaluated on a case by case basis by Louisiana Department of Wildlife & Fisheries. Modifications to proposed project features including, but not limited to, access routes, well sites, flowlines, and appurtenant structures maybe required by the Louisiana Department of Wildlife and Fisheries. In addition, compensatory mitigation will be required to offset unavoidable habitat impacts.

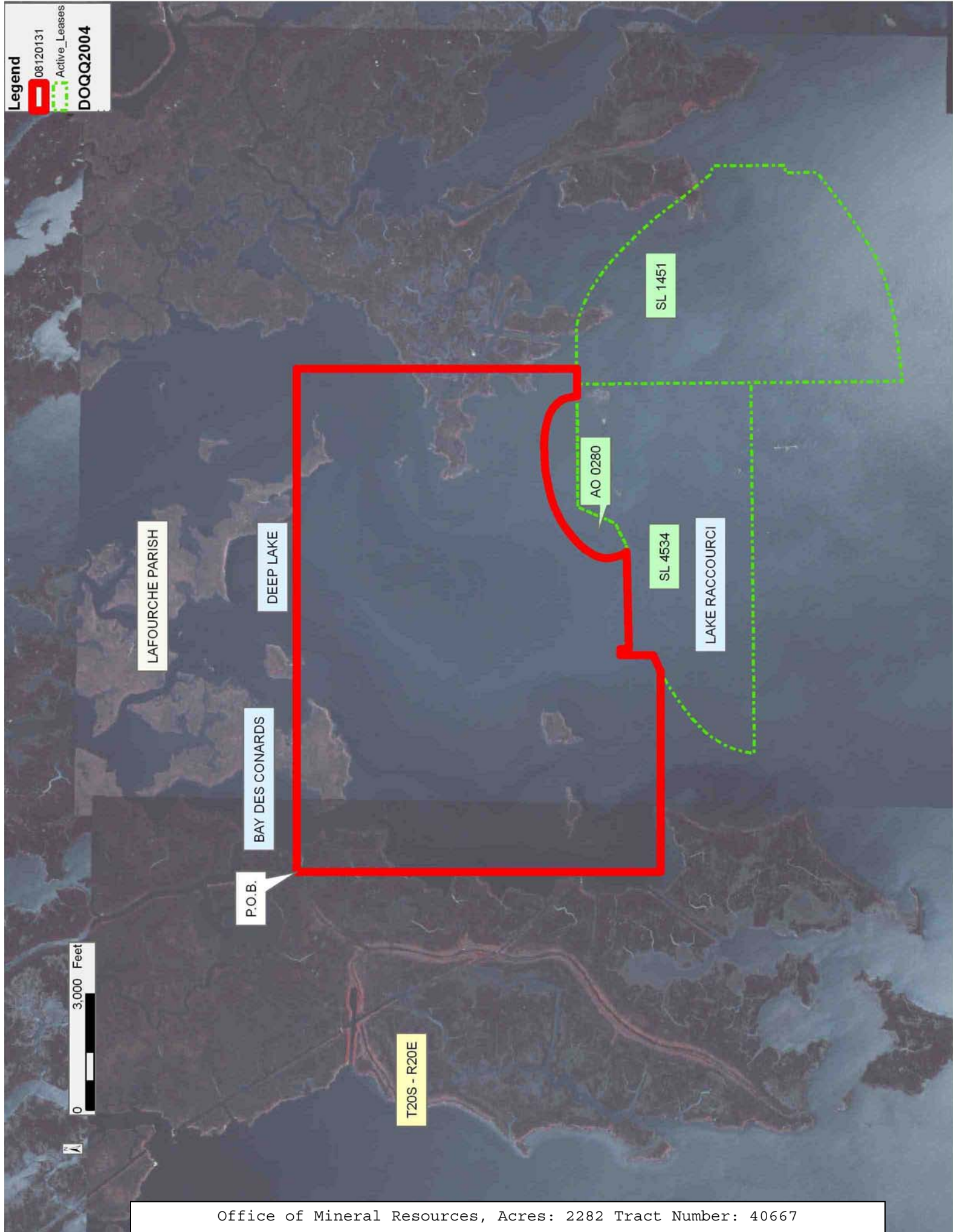
NOTE: The State of Louisiana does hereby reserve, and this lease shall be subject to, the imprescriptible right of surface use in the nature of a servitude in favor of the Department of Natural Resources, including its Offices and Commissions, for the sole purpose of implementing,

constructing, servicing and maintaining approved coastal zone management and/or restoration projects. Utilization of any and all rights derived under this lease by the mineral lessee, its agents, successors or assigns, shall not interfere with nor hinder the reasonable surface use by the Department of Natural Resources, its Offices or Commissions, as herein above reserved.

Applicant: SPECTER EXPLORATION, INC.

Bidder	Cash Payment	Price/ Acre	Rental	Oil	Gas	Other

**Legend**  
08120131  
Active\_Leases  
DOQQ2004



**TRACT 40668 - Lafourche Parish, Louisiana**

All of the lands now or formerly constituting the beds and bottoms of all water bodies of every nature and description as to which title is vested in the State of Louisiana, together with all islands arising therein and other lands formed by accretion or by reliction, where allowed by law, excepting tax adjudicated lands, and not presently under mineral lease on December 10, 2008, situated in Lafourche Parish, Louisiana, and more particularly described as follows: Beginning at a point having Coordinates of X = 2,318,000.00 and Y = 230,400.00; thence East 18,000.00 feet to a point having Coordinates of X = 2,336,000.00 and Y = 230,400.00; thence South 6,000.00 feet to a point having Coordinates of X = 2,336,000.00 and Y = 224,400.00; thence West 16,352.02 feet to a point on the Northern boundary of State Lease No. 1451, as amended, having Coordinates of X = 2,319,647.98 and Y = 224,400.00; thence along the boundary of said State Lease No. 1451 the following courses: North 65 degrees 33 minutes 22 seconds West 96.64 feet;

North 73 degrees 18 minutes 03 seconds West 466.66 feet; and South 89 degrees 30 minutes 18 seconds West 1,113.06 feet to a point having Coordinates of X = 2,318,000.00 and Y = 224,564.47; thence 5,835.54 feet to the point of beginning, **LESS AND EXPECT** all of that portion of State Lease No. 1451, as amended, that may lie within the above described tract, containing approximately **786 acres**, all as more particularly outlined on a plat on file in the Office of Mineral Resources, Department of Natural Resources. All bearings, distances and coordinates are based on Louisiana Coordinate System of 1927, (North or South Zone), where applicable.

NOTE: The above description of the Tract nominated for lease has been provided and corrected, where required, exclusively by the nomination party. Any mineral lease selected from this Tract and awarded by the Louisiana State Mineral Board shall be without warranty of any kind, either express, implied, or statutory, including, but not limited to, the implied warranties of merchantability and fitness for a particular purpose. Should the mineral lease awarded by the Louisiana State Mineral Board be subsequently modified, cancelled or abrogated due to the existence of conflicting leases, operating agreements, private claims or other future obligations or conditions which may affect all or any portion of the leased Tract, it shall not relieve the Lessee of the obligation to pay any bonus due thereon to the Louisiana State Mineral Board, nor shall the Louisiana State Mineral Board be obligated to refund any consideration paid by the Lessor prior to such modification, cancellation, or abrogation, including, but not limited to, bonuses, rentals and royalties.

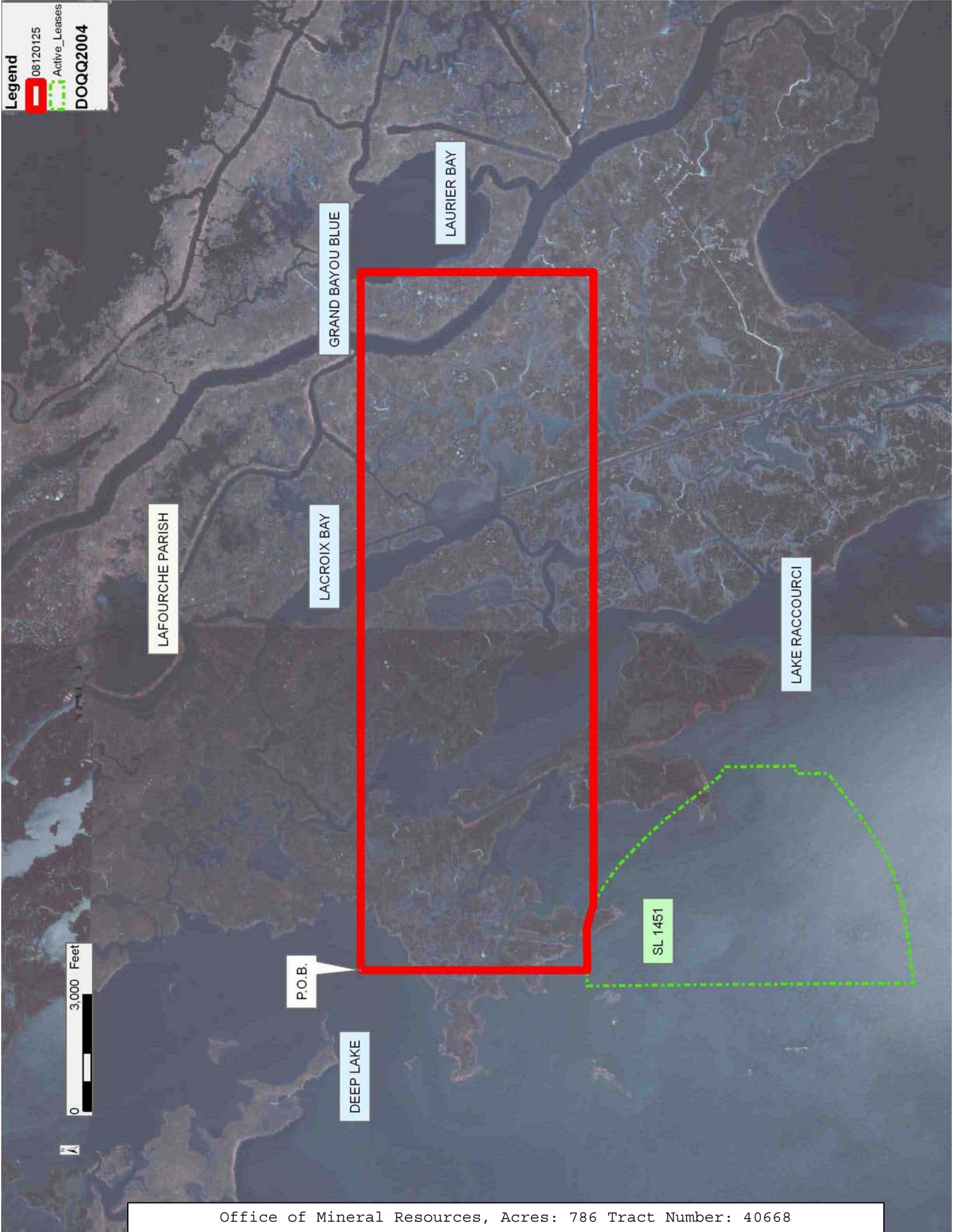
NOTE: The State of Louisiana does hereby reserve, and this lease shall be subject to, the imprescriptible right of surface use in the nature of a servitude in favor of the Department of Natural Resources, including its Offices and Commissions, for the sole purpose of implementing, constructing, servicing and maintaining approved coastal zone management and/or restoration projects. Utilization of any and all rights derived under this lease by the mineral lessee, its agents, successors or assigns,

shall not interfere with nor hinder the reasonable surface use by the Department of Natural Resources, its Offices or Commissions, as herein above reserved.

Applicant: SPECTER EXPLORATION, INC.

Bidder	Cash Payment	Price/ Acre	Rental	Oil	Gas	Other

**Legend**  
08120125  
Active\_Leases  
DOQQ2004



**TRACT 40669 - Lafourche Parish, Louisiana**

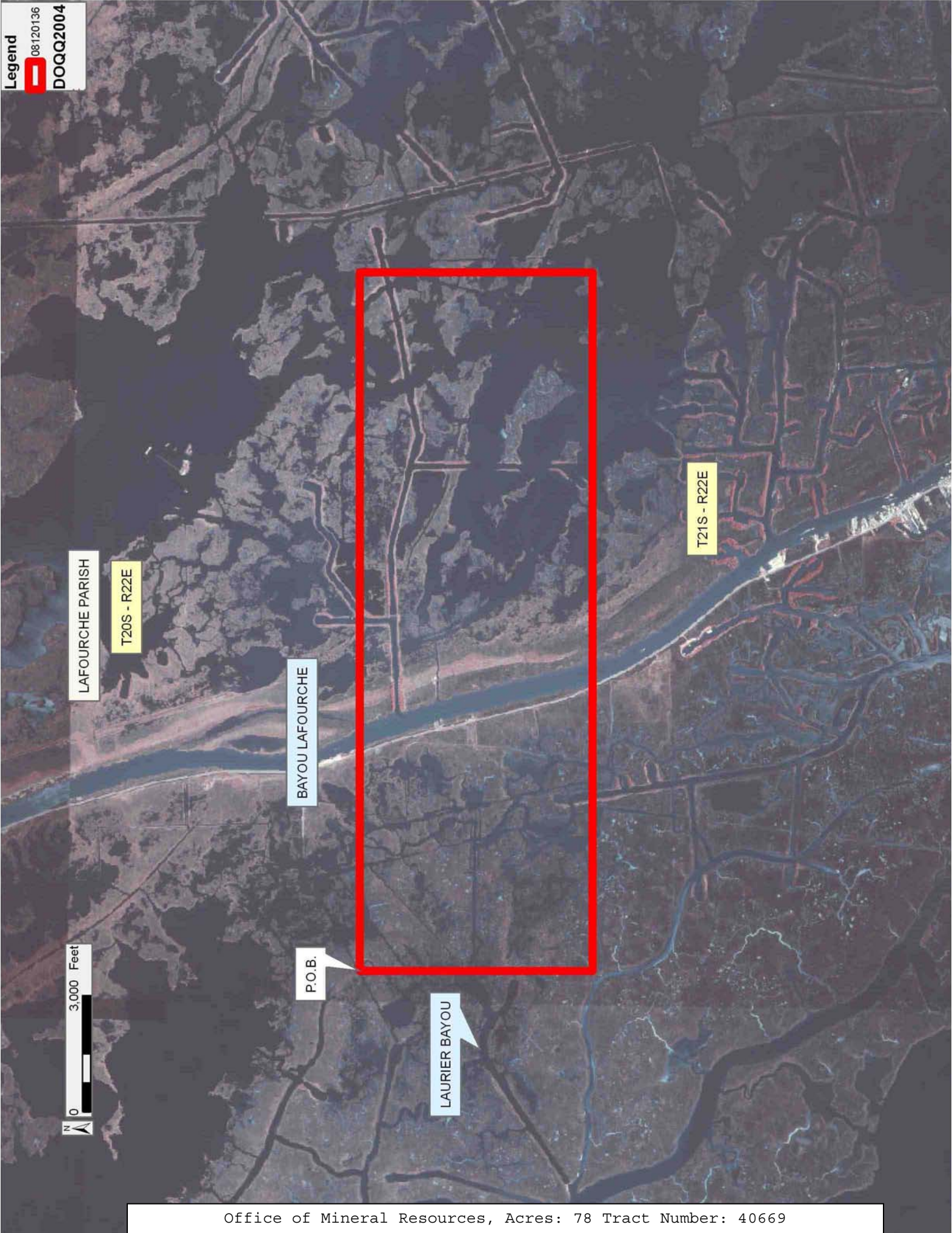
All of the lands now or formerly constituting the beds and bottoms of all water bodies of every nature and description as to which title is vested in the State of Louisiana, together with all islands arising therein and other lands formed by accretion or by reliction, where allowed by law, excepting tax adjudicated lands, and not presently under mineral lease on December 10, 2008, situated in Lafourche Parish, Louisiana, and more particularly described as follows: Beginning at a point having Coordinates of X = 2,345,000.00 feet and Y = 230,400.00 feet; thence East 18,000.00 feet to a point having Coordinates of X = 2,363,000.00 feet and Y = 230,400.00 feet; thence South 6,000.00 feet to a point having Coordinates of X = 2,363,000.00 feet and Y = 224,400.00 feet; thence West 18,000.00 feet to Coordinates of X = 2,345,000.00 feet and Y = 224,400.00 feet; thence North 6,000.00 feet to the point of beginning, containing approximately **78 acres**, all as more particularly outlined on a plat on file in the Office of Mineral Resources, Department of Natural Resources. All bearings, distances and coordinates are based on Louisiana Coordinate System of 1927, (North or South Zone), where applicable.

NOTE: The above description of the Tract nominated for lease has been provided and corrected, where required, exclusively by the nomination party. Any mineral lease selected from this Tract and awarded by the Louisiana State Mineral Board shall be without warranty of any kind, either express, implied, or statutory, including, but not limited to, the implied warranties of merchantability and fitness for a particular purpose. Should the mineral lease awarded by the Louisiana State Mineral Board be subsequently modified, cancelled or abrogated due to the existence of conflicting leases, operating agreements, private claims or other future obligations or conditions which may affect all or any portion of the leased Tract, it shall not relieve the Lessee of the obligation to pay any bonus due thereon to the Louisiana State Mineral Board, nor shall the Louisiana State Mineral Board be obligated to refund any consideration paid by the Lessor prior to such modification, cancellation, or abrogation, including, but not limited to, bonuses, rentals and royalties.

NOTE: The State of Louisiana does hereby reserve, and this lease shall be subject to, the imprescriptible right of surface use in the nature of a servitude in favor of the Department of Natural Resources, including its Offices and Commissions, for the sole purpose of implementing, constructing, servicing and maintaining approved coastal zone management and/or restoration projects. Utilization of any and all rights derived under this lease by the mineral lessee, its agents, successors or assigns, shall not interfere with nor hinder the reasonable surface use by the Department of Natural Resources, its Offices or Commissions, as herein above reserved.

Applicant: SPECTER EXPLORATION, INC.

Bidder	Cash Payment	Price/ Acre	Rental	Oil	Gas	Other



**TRACT 40670 - Terrebonne Parish, Louisiana**

All of the lands now or formerly constituting the beds and bottoms of all water bodies of every nature and description as to which title is vested in the State of Louisiana, together with all islands arising therein and other lands formed by accretion or by reliction, where allowed by law, excepting tax adjudicated lands, and not presently under mineral lease on December 10, 2008, situated in Terrebonne Parish, Louisiana, and more particularly described as follows: Beginning at a point having Coordinates of X = 2,098,700.00 and Y = 231,800.00; thence East 18,000.00 feet to a point having Coordinates of X = 2,116,700.00 and Y = 231,800.00; thence South 8,000.00 feet to a point having Coordinates of X = 2,116,700.00 and Y = 223,800.00; thence West 18,000.00 feet to a point having Coordinates of X = 2,098,700.00 and Y = 223,800.00; thence North 8,000.00 feet to the point of beginning, containing approximately **2,100 acres**, all as more particularly outlined on a plat on file in the Office of Mineral Resources, Department of Natural Resources. All bearings, distances and coordinates are based on Louisiana Coordinate System of 1927, (North or South Zone), where applicable.

NOTE: The above description of the Tract nominated for lease has been provided and corrected, where required, exclusively by the nomination party. Any mineral lease selected from this Tract and awarded by the Louisiana State Mineral Board shall be without warranty of any kind, either express, implied, or statutory, including, but not limited to, the implied warranties of merchantability and fitness for a particular purpose. Should the mineral lease awarded by the Louisiana State Mineral Board be subsequently modified, cancelled or abrogated due to the existence of conflicting leases, operating agreements, private claims or other future obligations or conditions which may affect all or any portion of the leased Tract, it shall not relieve the Lessee of the obligation to pay any bonus due thereon to the Louisiana State Mineral Board, nor shall the Louisiana State Mineral Board be obligated to refund any consideration paid by the Lessor prior to such modification, cancellation, or abrogation, including, but not limited to, bonuses, rentals and royalties.

NOTE: The State of Louisiana does hereby reserve, and this lease shall be subject to, the imprescriptible right of surface use in the nature of a servitude in favor of the Department of Natural Resources, including its Offices and Commissions, for the sole purpose of implementing, constructing, servicing and maintaining approved coastal zone management and/or restoration projects. Utilization of any and all rights derived under this lease by the mineral lessee, its agents, successors or assigns, shall not interfere with nor hinder the reasonable surface use by the Department of Natural Resources, its Offices or Commissions, as herein above reserved.

Applicant: AMEX RESOURCES, INC.

Bidder	Cash Payment	Price/ Acre	Rental	Oil	Gas	Other

TERREBONNE PARISH

LAKE MECHANT

T20S - R14E

BAYOU NEW ROUTE

T21S - R14E

P.O.B.

