

TRACT 40631 - Terrebonne Parish, Louisiana

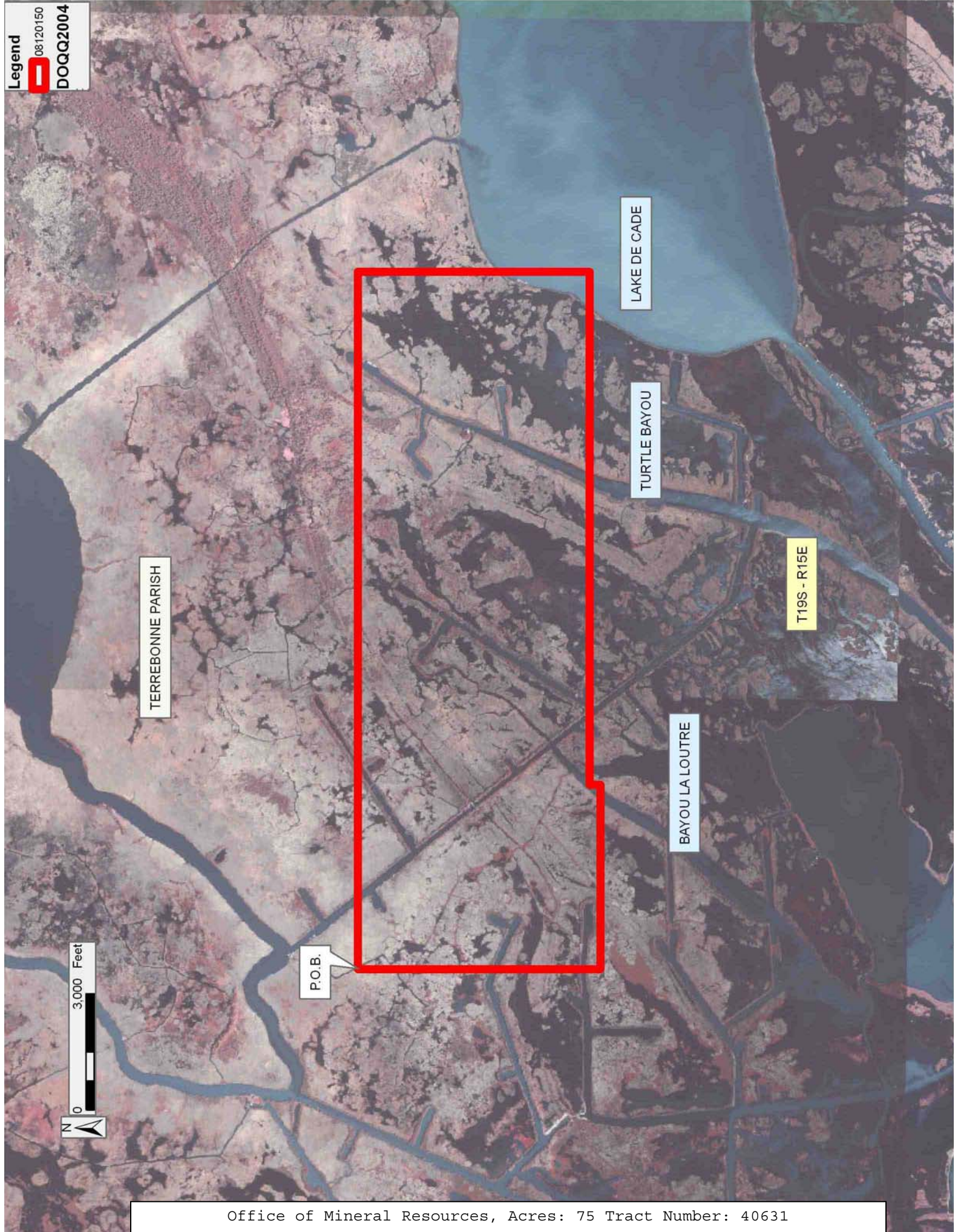
All of the lands now or formerly constituting the beds and bottoms of all water bodies of every nature and description as to which title is vested in the State of Louisiana, together with all islands arising therein and other lands formed by accretion or by reliction, where allowed by law, excepting tax adjudicated lands, and not presently under mineral lease on December 10, 2008, situated in Terrebonne Parish, Louisiana, and more particularly described as follows: Beginning at a point having Coordinates of X = 2,120,162.84 and Y = 270,620.00; thence East 18,000.00 feet to a point having Coordinates of X = 2,138,162.84 and Y = 270,620.00; thence South 5,978.48 feet to a point having Coordinates of X = 2,138,162.84 and Y = 264,641.52; thence West 13,242.76 feet to a point having Coordinates of X = 2,124,920.08 and Y = 264,641.52; thence South 274.35 feet to a point having Coordinates of X = 2,124,920.08 and Y = 264,367.16; thence West 4,757.24 feet to a point having Coordinates of X = 2,120,162.84 and Y = 264,367.16; thence North 6,252.84 feet to the point of beginning, containing approximately **75 acres**, all as more particularly outlined on a plat on file in the Office of Mineral Resources, Department of Natural Resources. All bearings, distances and coordinates are based on Louisiana Coordinate System of 1927, (North or South Zone), where applicable.

NOTE: The above description of the Tract nominated for lease has been provided and corrected, where required, exclusively by the nomination party. Any mineral lease selected from this Tract and awarded by the Louisiana State Mineral Board shall be without warranty of any kind, either express, implied, or statutory, including, but not limited to, the implied warranties of merchantability and fitness for a particular purpose. Should the mineral lease awarded by the Louisiana State Mineral Board be subsequently modified, cancelled or abrogated due to the existence of conflicting leases, operating agreements, private claims or other future obligations or conditions which may affect all or any portion of the leased Tract, it shall not relieve the Lessee of the obligation to pay any bonus due thereon to the Louisiana State Mineral Board, nor shall the Louisiana State Mineral Board be obligated to refund any consideration paid by the Lessor prior to such modification, cancellation, or abrogation, including, but not limited to, bonuses, rentals and royalties.

NOTE: The State of Louisiana does hereby reserve, and this lease shall be subject to, the imprescriptible right of surface use in the nature of a servitude in favor of the Department of Natural Resources, including its Offices and Commissions, for the sole purpose of implementing, constructing, servicing and maintaining approved coastal zone management and/or restoration projects. Utilization of any and all rights derived under this lease by the mineral lessee, its agents, successors or assigns, shall not interfere with nor hinder the reasonable surface use by the Department of Natural Resources, its Offices or Commissions, as herein above reserved.

Applicant: AMEX RESOURCES, INC.

Bidder	Cash Payment	Price/Acre	Rental	Oil	Gas	Other



TRACT 40632 - Portion of Block 52, Main Pass Area, Revised, Plaquemines Parish, Louisiana

All of the lands now or formerly constituting the beds and bottoms of all water bodies of every nature and description as to which title is vested in the State of Louisiana, together with all islands arising therein and other lands formed by accretion or by reliction, where allowed by law, excepting tax adjudicated lands, and not presently under mineral lease on December 10, 2008, situated in Plaquemines Parish, Louisiana, and more particularly described as follows: Beginning at the Southernmost corner of State Lease No. 16850, also being the Northernmost corner State Lease No. 11188, as amended, having Coordinates of X = 2,664,850.00 and Y = 257,700.00; thence along the boundary of said State Lease No. 11188 the following courses: South 37 degrees 23 minutes 49 seconds West 4,420.00 feet to a point having Coordinates of X = 2,662,165.59 and Y = 254,188.54 and South 36 degrees 47 minutes 09 seconds East approximately 4,492 feet to a point of intersection with the boundary of State Lease No. 195, as amended; thence along the boundary of said State Lease No. 195 the following: Southwesterly approximately 1,113 feet and Northwesterly approximately 14,308 feet to a point of intersection with a line having a bearing of South 71 degrees 05 minutes 36 seconds West and commencing at a point having Coordinates of X = 2,656,904.00 and Y = 261,271.20; thence North 71 degrees 05 minutes 36 seconds East approximately 3,754 feet along said line to said point being the Southernmost Southwest corner of State Lease No. 16664 having Coordinates of X = 2,656,904.00 and Y = 261,271.20; thence North 71 degrees 05 minutes 36 seconds East 5,863.35 feet along the Southern boundary of said State Lease No. 16664 to its Southeast corner having Coordinates of X = 2,662,451.00 and Y = 263,171.10; thence South 09 degrees 17 minutes 07 seconds West 2,243.50 feet to the Northwest corner of State Lease No. 16849, as amended, having Coordinates of X = 2,662,089.00 and Y = 260,957.00; thence along the boundary of said State Lease No. 16849 the following courses: South 19 degrees 56 minutes 33 seconds West 1,781.60 feet to a point having Coordinates of X = 2,661,481.34 and Y = 259,282.23; South 82 degrees 11 minutes 24 seconds East 1,464.54 feet to a point having Coordinates of X = 2,662,932.30 and Y = 259,083.22 and South 53 degrees 29 minutes 55 seconds East 0.62 feet to the Westernmost corner of said State Lease No. 16850 having Coordinates of X = 2,662,932.80 and Y = 259,082.85; thence South 54 degrees 11 minutes 51 seconds East 2,363.88 feet along the Southern boundary of said State Lease No. 16850 to the point of beginning, **LESS AND EXCEPT** that portion, if any, of State Lease No. 195, as amended, which may lie within the above described tract, containing approximately **1,393 acres**, all as more particularly outlined on a plat on file in the Office of Mineral Resources, Department of Natural Resources. All bearings, distances and coordinates are based on Louisiana Coordinate System of 1927, (North or South Zone), where applicable.

NOTE: The above description of the Tract nominated for lease has been provided and corrected, where required, exclusively by the nomination party. Any mineral lease selected from this Tract and awarded by the

Louisiana State Mineral Board shall be without warranty of any kind, either express, implied, or statutory, including, but not limited to, the implied warranties of merchantability and fitness for a particular purpose. Should the mineral lease awarded by the Louisiana State Mineral Board be subsequently modified, cancelled or abrogated due to the existence of conflicting leases, operating agreements, private claims or other future obligations or conditions which may affect all or any portion of the leased Tract, it shall not relieve the Lessee of the obligation to pay any bonus due thereon to the Louisiana State Mineral Board, nor shall the Louisiana State Mineral Board be obligated to refund any consideration paid by the Lessor prior to such modification, cancellation, or abrogation, including, but not limited to, bonuses, rentals and royalties.

NOTE: This tract is located in an area designated by the Louisiana Legislature or the Wildlife and Fisheries Commission as a Public Oyster Seed Ground, Reservation, or area of Calcasieu or Sabine Lake. Proposed projects occurring in these areas will be evaluated on a case by case basis by Louisiana Department of Wildlife & Fisheries. Modifications to proposed project features including, but not limited to, access routes, well sites, flowlines, and appurtenant structures maybe required by the Louisiana Department of Wildlife and Fisheries. In addition, compensatory mitigation will be required to offset unavoidable habitat impacts.

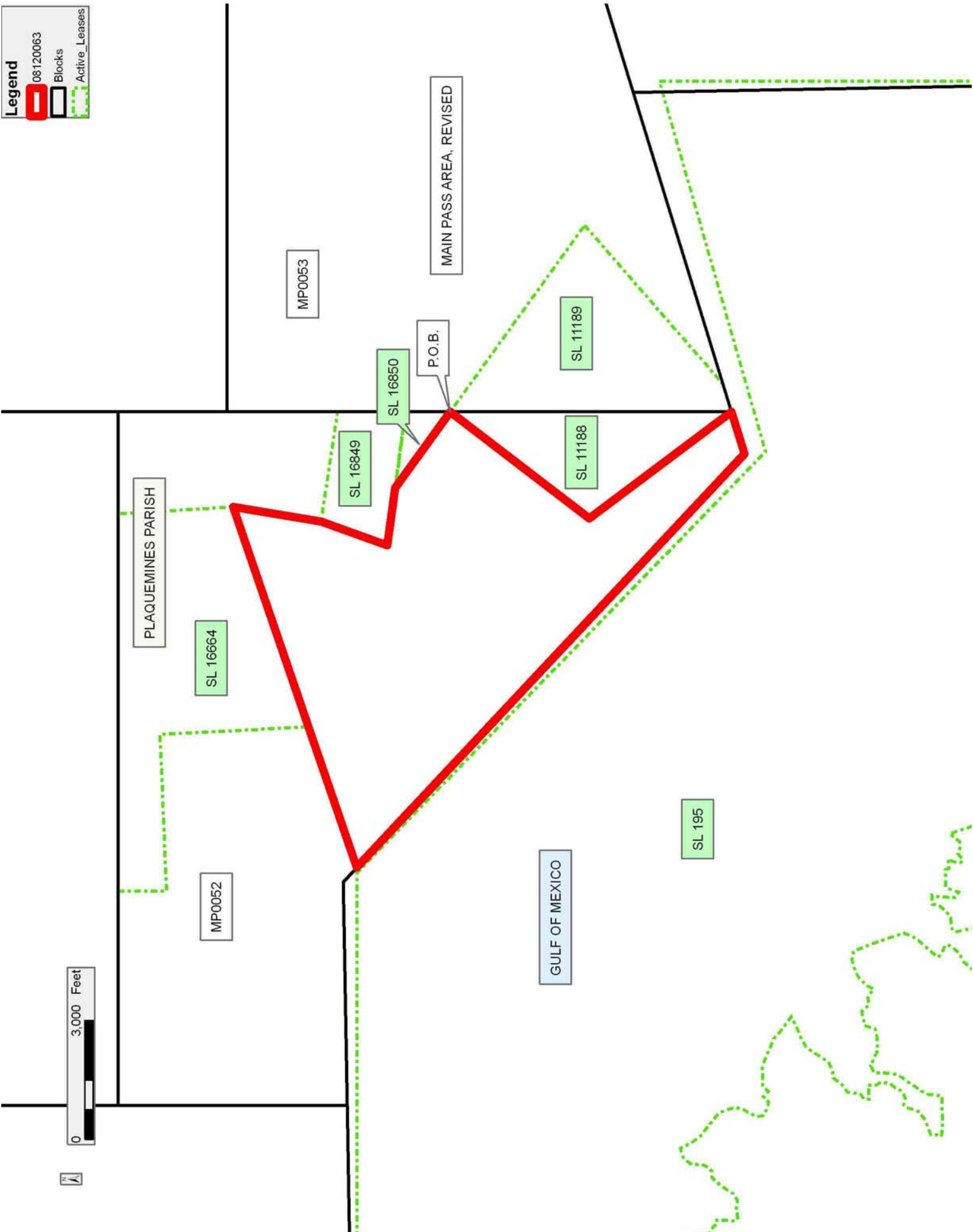
NOTE: The State of Louisiana does hereby reserve, and this lease shall be subject to, the imprescriptible right of surface use in the nature of a servitude in favor of the Department of Natural Resources, including its Offices and Commissions, for the sole purpose of implementing, constructing, servicing and maintaining approved coastal zone management and/or restoration projects. Utilization of any and all rights derived under this lease by the mineral lessee, its agents, successors or assigns, shall not interfere with nor hinder the reasonable surface use by the Department of Natural Resources, its Offices or Commissions, as herein above reserved.

Applicant: ROBERT A. SCHROEDER, INC.

Bidder	Cash Payment	Price/Acre	Rental	Oil	Gas	Other

Legend

- 08120063
- Blocks
- Active_Leases



MP0053

MAIN PASS AREA, REVISED

P.O.B.

SL 16850

SL 11189

SL 11188

SL 16849

PLAQUEMINES PARISH

SL 16664

MP0052

GULF OF MEXICO

SL 195



TRACT 40633 - Terrebonne Parish, Louisiana

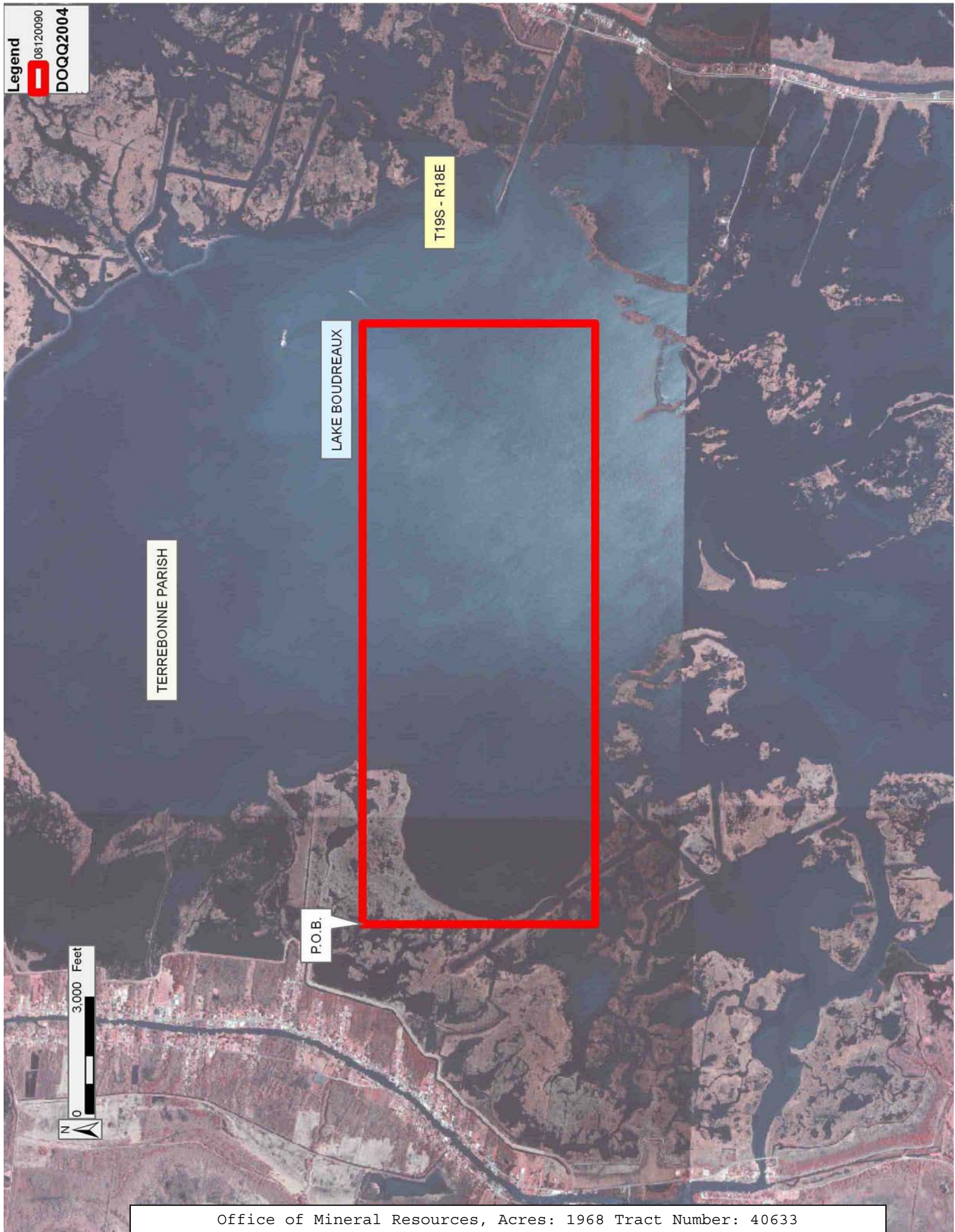
All of the lands now or formerly constituting the beds and bottoms of all water bodies of every nature and description as to which title is vested in the State of Louisiana, together with all islands arising therein and other lands formed by accretion or by reliction, where allowed by law, excepting tax adjudicated lands, and not presently under mineral lease on December 10, 2008, situated in Terrebonne Parish, Louisiana, and more particularly described as follows: Beginning at a point having Coordinates of X = 2,204,100.00 and Y = 267,700.00; thence East 15,500.00 feet to a point having Coordinates of X = 2,219,600.00 and Y = 267,700.00; thence South 6,000.00 feet to a point having Coordinates of X = 2,219,600.00 and Y = 261,700.00; thence West 15,500.00 feet to a point having Coordinates of X = 2,204,100.00 and Y = 261,700.00; thence North 6,000.00 feet to the point of beginning, containing approximately **1,968 acres**, all as more particularly outlined on a plat on file in the Office of Mineral Resources, Department of Natural Resources. All bearings, distances and coordinates are based on Louisiana Coordinate System of 1927, (North or South Zone), where applicable.

NOTE: The above description of the Tract nominated for lease has been provided and corrected, where required, exclusively by the nomination party. Any mineral lease selected from this Tract and awarded by the Louisiana State Mineral Board shall be without warranty of any kind, either express, implied, or statutory, including, but not limited to, the implied warranties of merchantability and fitness for a particular purpose. Should the mineral lease awarded by the Louisiana State Mineral Board be subsequently modified, cancelled or abrogated due to the existence of conflicting leases, operating agreements, private claims or other future obligations or conditions which may affect all or any portion of the leased Tract, it shall not relieve the Lessee of the obligation to pay any bonus due thereon to the Louisiana State Mineral Board, nor shall the Louisiana State Mineral Board be obligated to refund any consideration paid by the Lessor prior to such modification, cancellation, or abrogation, including, but not limited to, bonuses, rentals and royalties.

NOTE: The State of Louisiana does hereby reserve, and this lease shall be subject to, the imprescriptible right of surface use in the nature of a servitude in favor of the Department of Natural Resources, including its Offices and Commissions, for the sole purpose of implementing, constructing, servicing and maintaining approved coastal zone management and/or restoration projects. Utilization of any and all rights derived under this lease by the mineral lessee, its agents, successors or assigns, shall not interfere with nor hinder the reasonable surface use by the Department of Natural Resources, its Offices or Commissions, as herein above reserved.

Applicant: PETRO-LAND RESOURCES, INC.

Bidder	Cash Payment	Price/Acre	Rental	Oil	Gas	Other



TRACT 40634 - Terrebonne Parish, Louisiana

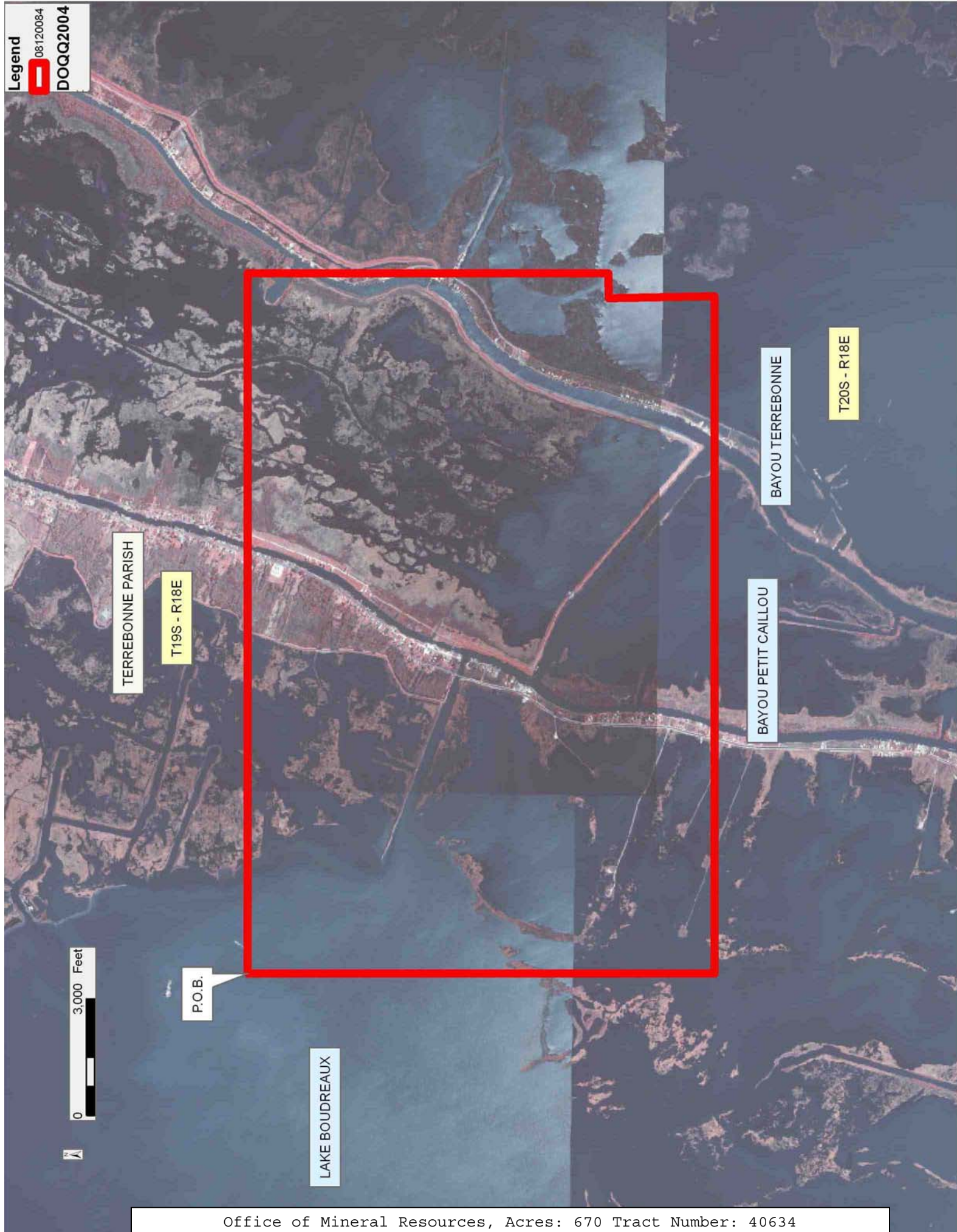
All of the lands now or formerly constituting the beds and bottoms of all water bodies of every nature and description as to which title is vested in the State of Louisiana, together with all islands arising therein and other lands formed by accretion or by reliction, where allowed by law, excepting tax adjudicated lands, and not presently under mineral lease on December 10, 2008, situated in Terrebonne Parish, Louisiana, and more particularly described as follows: Beginning at a point having Coordinates of X = 2,219,600.00 and Y = 267,700.00; thence East 18,000.00 feet to a point having Coordinates of X = 2,237,600.00 and Y = 267,700.00; thence South 9,268.03 feet to a point having Coordinates of X = 2,237,600.00 and Y = 258,431.97; thence South 88 degrees 51 minutes 35 seconds West 642.01 feet to a point having Coordinates of X = 2,236,958.12 and Y = 258,419.19; thence South 01 degrees 12 minutes 00 seconds East 2,719.79 feet to a point having Coordinates of X = 2,237,015.08 and Y = 255,700.00; thence West 17,415.08 feet to a point having Coordinates of X = 2,219,600.00 and Y = 255,700.00; thence North 12,000.00 feet to the point of beginning, containing approximately **670 acres**, all as more particularly outlined on a plat on file in the Office of Mineral Resources, Department of Natural Resources. All bearings, distances and coordinates are based on Louisiana Coordinate System of 1927, (North or South Zone), where applicable.

NOTE: The above description of the Tract nominated for lease has been provided and corrected, where required, exclusively by the nomination party. Any mineral lease selected from this Tract and awarded by the Louisiana State Mineral Board shall be without warranty of any kind, either express, implied, or statutory, including, but not limited to, the implied warranties of merchantability and fitness for a particular purpose. Should the mineral lease awarded by the Louisiana State Mineral Board be subsequently modified, cancelled or abrogated due to the existence of conflicting leases, operating agreements, private claims or other future obligations or conditions which may affect all or any portion of the leased Tract, it shall not relieve the Lessee of the obligation to pay any bonus due thereon to the Louisiana State Mineral Board, nor shall the Louisiana State Mineral Board be obligated to refund any consideration paid by the Lessor prior to such modification, cancellation, or abrogation, including, but not limited to, bonuses, rentals and royalties.

NOTE: The State of Louisiana does hereby reserve, and this lease shall be subject to, the imprescriptible right of surface use in the nature of a servitude in favor of the Department of Natural Resources, including its Offices and Commissions, for the sole purpose of implementing, constructing, servicing and maintaining approved coastal zone management and/or restoration projects. Utilization of any and all rights derived under this lease by the mineral lessee, its agents, successors or assigns, shall not interfere with nor hinder the reasonable surface use by the Department of Natural Resources, its Offices or Commissions, as herein above reserved.

Applicant: PETRO-LAND RESOURCES, INC.

Bidder	Cash Payment	Price/Acre	Rental	Oil	Gas	Other



TERREBONNE PARISH

T19S - R18E

T20S - R18E

BAYOU TERREBONNE

BAYOU PETIT CAILLOU

LAKE BOUDREUX

P.O.B.

0 3,000 Feet



TRACT 40635 - Terrebonne Parish, Louisiana

All of the lands now or formerly constituting the beds and bottoms of all water bodies of every nature and description as to which title is vested in the State of Louisiana, together with all islands arising therein and other lands formed by accretion or by reliction, where allowed by law, excepting tax adjudicated lands, and not presently under mineral lease on December 10, 2008, situated in Terrebonne Parish, Louisiana, and more particularly described as follows: Beginning at a point having Coordinates of X = 2,148,450.00 and Y = 266,920.00; thence East 3,150.00 feet to the Northwest corner of State Lease No. 17174 having Coordinates of X = 2,151,600.00 and Y = 266,920.00; thence along the boundary of said State Lease No. 17174 the following courses: South 5,300.00 feet to its Southwest corner having Coordinates of X = 2,151,600.00 and Y = 261,620.00 and East 5,280.00 feet to its Southeast corner having Coordinates of X = 2,156,880.00 and Y = 261,620.00; thence South 3,000.00 feet to a point having Coordinates of X = 2,156,880.00 and Y = 258,620.00; thence West 8,430.00 feet to a point having Coordinates of X = 2,148,450.00 and Y = 258,620.00; thence North 8,300.00 feet to the point of beginning, containing approximately **542 acres**, all as more particularly outlined on a plat on file in the Office of Mineral Resources, Department of Natural Resources. All bearings, distances and coordinates are based on Louisiana Coordinate System of 1927, (North or South Zone), where applicable.

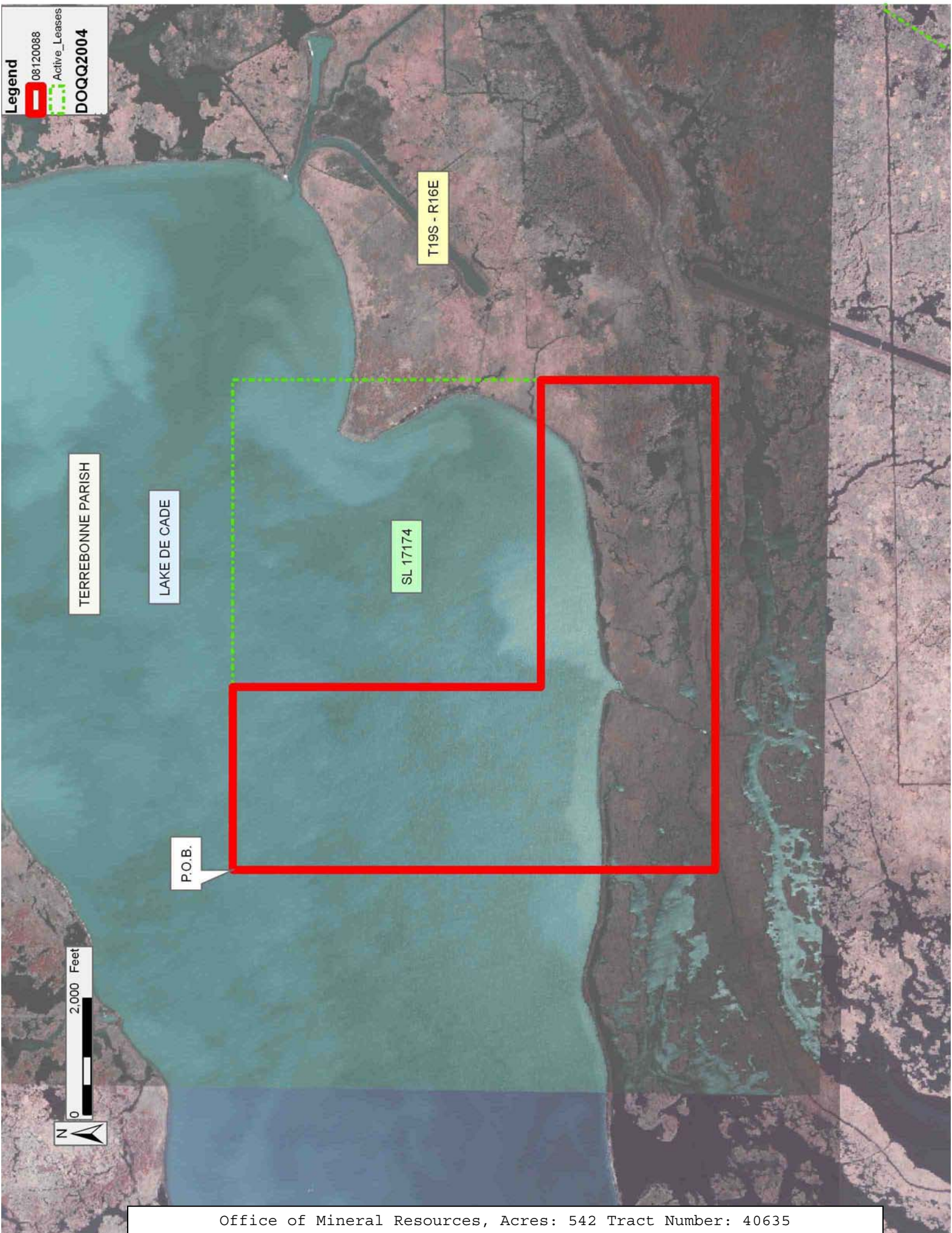
NOTE: The above description of the Tract nominated for lease has been provided and corrected, where required, exclusively by the nomination party. Any mineral lease selected from this Tract and awarded by the Louisiana State Mineral Board shall be without warranty of any kind, either express, implied, or statutory, including, but not limited to, the implied warranties of merchantability and fitness for a particular purpose. Should the mineral lease awarded by the Louisiana State Mineral Board be subsequently modified, cancelled or abrogated due to the existence of conflicting leases, operating agreements, private claims or other future obligations or conditions which may affect all or any portion of the leased Tract, it shall not relieve the Lessee of the obligation to pay any bonus due thereon to the Louisiana State Mineral Board, nor shall the Louisiana State Mineral Board be obligated to refund any consideration paid by the Lessor prior to such modification, cancellation, or abrogation, including, but not limited to, bonuses, rentals and royalties.

NOTE: The State of Louisiana does hereby reserve, and this lease shall be subject to, the imprescriptible right of surface use in the nature of a servitude in favor of the Department of Natural Resources, including its Offices and Commissions, for the sole purpose of implementing, constructing, servicing and maintaining approved coastal zone management and/or restoration projects. Utilization of any and all rights derived under this lease by the mineral lessee, its agents, successors or assigns, shall not interfere with nor hinder the reasonable surface use by the Department of Natural Resources, its Offices or Commissions, as herein above reserved.

Applicant: PETRO-LAND RESOURCES, INC.

Bidder	Cash Payment	Price/Acre	Rental	Oil	Gas	Other

Legend
08120088
Active_Leases
DOQQ2004



TRACT 40636 - Portion of Blocks 53, and 85, Main Pass Area, Revised, Plaquemines Parish, Louisiana

All of the lands now or formerly constituting the beds and bottoms of all water bodies of every nature and description as to which title is vested in the State of Louisiana, together with all islands arising therein and other lands formed by accretion or by reliction, where allowed by law, excepting tax adjudicated lands, and not presently under mineral lease on December 10, 2008, situated in Plaquemines Parish, Louisiana, and more particularly described as follows: Beginning at the Northernmost corner of State Lease No. 11189, as amended, also being the Southernmost corner of State Lease No. 16851 having Coordinates of X = 2,664,850.00 and Y = 257,700.00; thence North 37 degrees 23 minutes 23 seconds East 2,139.65 feet along the Southeastern boundary of said State Lease No. 16851 to a point having Coordinates of X = 2,666,149.27 and Y = 259,400.00; thence East 11,905.73 feet to a point having Coordinates of X = 2,678,055.00 and Y = 259,400.00; thence South 12,915.00 feet to a point having Coordinates of X = 2,678,055.00 and Y = 246,485.00; thence West approximately 5,007 feet to a point of intersection with the Eastern boundary of State Lease No. 195, as amended, having a Coordinate of Y = 246,485.00; thence along the boundary of said State Lease No. 195 the following: Northerly approximately 6,550 feet to a corner of said State Lease No. 195 and Southwesterly approximately 7,710 feet to a point on the Southeastern boundary of said State Lease No. 11189; thence along the boundary of said State Lease No. 11189 the following courses: North 48 degrees 54 minutes 31 seconds East approximately 5,328 feet to a point having Coordinates of X = 2,669,561.48 and Y = 254,301.65 and North 54 degrees 11 minutes 51 seconds West 5,809.20 feet to the point of beginning, **LESS AND EXCEPT** that portion, if any, of State Lease No. 195, as amended, which may lie within the above described tract, containing approximately **2,448 acres**, all as more particularly outlined on a plat on file in the Office of Mineral Resources, Department of Natural Resources. All bearings, distances and coordinates are based on Louisiana Coordinate System of 1927, (North or South Zone), where applicable.

NOTE: The above description of the Tract nominated for lease has been provided and corrected, where required, exclusively by the nomination party. Any mineral lease selected from this Tract and awarded by the Louisiana State Mineral Board shall be without warranty of any kind, either express, implied, or statutory, including, but not limited to, the implied warranties of merchantability and fitness for a particular purpose. Should the mineral lease awarded by the Louisiana State Mineral Board be subsequently modified, cancelled or abrogated due to the existence of conflicting leases, operating agreements, private claims or other future obligations or conditions which may affect all or any portion of the leased Tract, it shall not relieve the Lessee of the obligation to pay any bonus due thereon to the Louisiana State Mineral Board, nor shall the Louisiana State Mineral Board be obligated to refund any consideration paid by the Lessor prior to such modification, cancellation, or abrogation, including, but not limited to, bonuses, rentals and royalties.

NOTE: This tract is located in an area designated by the Louisiana Legislature or the Wildlife and Fisheries Commission as a Public Oyster Seed Ground, Reservation, or area of Calcasieu or Sabine Lake. Proposed projects occurring in these areas will be evaluated on a case by case basis by Louisiana Department of Wildlife & Fisheries. Modifications to proposed project features including, but not limited to, access routes, well sites, flowlines, and appurtenant structures maybe required by the Louisiana Department of Wildlife and Fisheries. In addition, compensatory mitigation will be required to offset unavoidable habitat impacts.

NOTE: The State of Louisiana does hereby reserve, and this lease shall be subject to, the imprescriptible right of surface use in the nature of a servitude in favor of the Department of Natural Resources, including its Offices and Commissions, for the sole purpose of implementing, constructing, servicing and maintaining approved coastal zone management and/or restoration projects. Utilization of any and all rights derived under this lease by the mineral lessee, its agents, successors or assigns, shall not interfere with nor hinder the reasonable surface use by the Department of Natural Resources, its Offices or Commissions, as herein above reserved.

Applicant: ROBERT A. SCHROEDER, INC.

Bidder	Cash Payment	Price/Acre	Rental	Oil	Gas	Other

Legend

08120065

Active_Leases

DOQQ2004

0 3,000 Feet

PLAQUEMINES PARISH

GULF OF MEXICO

MAIN PASS AREA, REVISED

SL 16851

SL 16850

P.O.B.

SL 11189

MP0053

SL 11188

SL 195

TRACT 40637 - Terrebonne Parish, Louisiana

All of the lands now or formerly constituting the beds and bottoms of all water bodies of every nature and description as to which title is vested in the State of Louisiana, together with all islands arising therein and other lands formed by accretion or by reliction, where allowed by law, excepting tax adjudicated lands, and not presently under mineral lease on December 10, 2008, situated in Terrebonne Parish, Louisiana, and more particularly described as follows: Beginning at a point having Coordinates of X = 2,116,500.00 and Y = 264,367.16; thence East 8,420.08 feet to a point having Coordinates of X = 2,124,920.08 and Y = 264,367.16; thence South 5,780.29 feet to a point on the Northern boundary of State Lease No. 3475, as amended, having Coordinates of X = 2,124,920.08 and Y = 258,586.88; thence South 89 degrees 08 minutes 28 seconds West 8,421.03 feet along the Northern boundary of said State Lease No. 3475 to a point having Coordinates of X = 2,116,500.00 and Y = 258,460.65; thence North 5,906.52 feet to the point of beginning, **LESS AND EXPECT** all of Operating Agreement AO 0137 and the portion of State Lease No. 12105, as amended, that lies entirely within the above described tract, containing approximately **133 acres**, all as more particularly outlined on a plat on file in the Office of Mineral Resources, Department of Natural Resources. All bearings, distances and coordinates are based on Louisiana Coordinate System of 1927, (North or South Zone), where applicable.

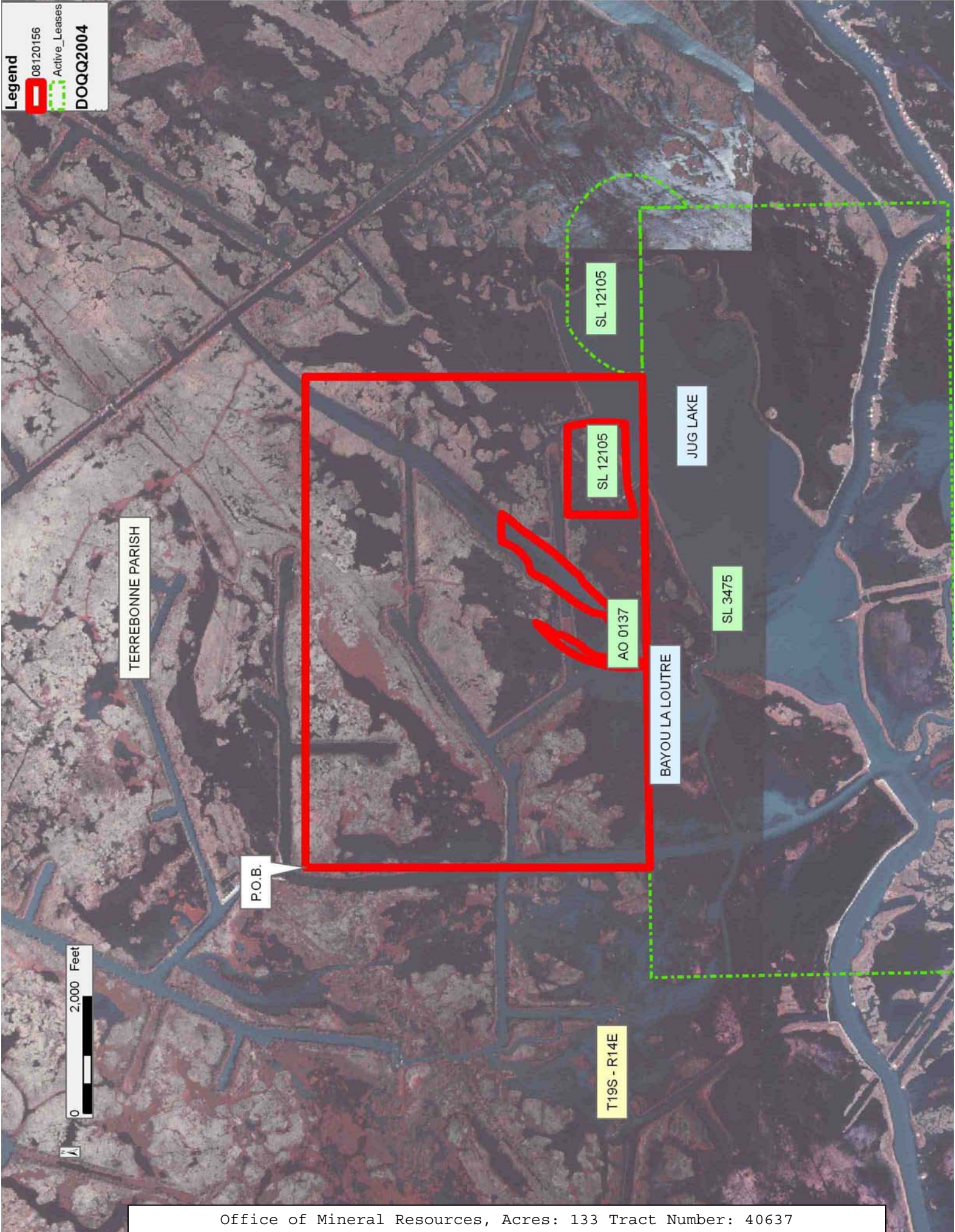
NOTE: The above description of the Tract nominated for lease has been provided and corrected, where required, exclusively by the nomination party. Any mineral lease selected from this Tract and awarded by the Louisiana State Mineral Board shall be without warranty of any kind, either express, implied, or statutory, including, but not limited to, the implied warranties of merchantability and fitness for a particular purpose. Should the mineral lease awarded by the Louisiana State Mineral Board be subsequently modified, cancelled or abrogated due to the existence of conflicting leases, operating agreements, private claims or other future obligations or conditions which may affect all or any portion of the leased Tract, it shall not relieve the Lessee of the obligation to pay any bonus due thereon to the Louisiana State Mineral Board, nor shall the Louisiana State Mineral Board be obligated to refund any consideration paid by the Lessor prior to such modification, cancellation, or abrogation, including, but not limited to, bonuses, rentals and royalties.

NOTE: The State of Louisiana does hereby reserve, and this lease shall be subject to, the imprescriptible right of surface use in the nature of a servitude in favor of the Department of Natural Resources, including its Offices and Commissions, for the sole purpose of implementing, constructing, servicing and maintaining approved coastal zone management and/or restoration projects. Utilization of any and all rights derived under this lease by the mineral lessee, its agents, successors or assigns, shall not interfere with nor hinder the reasonable surface use by the Department of Natural Resources, its Offices or Commissions, as herein above reserved.

Applicant: AMEX RESOURCES, INC.

Bidder	Cash Payment	Price/Acre	Rental	Oil	Gas	Other

Legend
08120156
Active_Leases
DOQQ2004



TRACT 40638 - Terrebonne Parish, Louisiana

All of the lands now or formerly constituting the beds and bottoms of all water bodies of every nature and description as to which title is vested in the State of Louisiana, together with all islands arising therein and other lands formed by accretion or by reliction, where allowed by law, excepting tax adjudicated lands, and not presently under mineral lease on December 10, 2008, situated in Terrebonne Parish, Louisiana, and more particularly described as follows: Beginning at a point having Coordinates of X = 2,124,920.08 and Y = 264,641.52; thence East 13,242.76 feet to a point having Coordinates of X = 2,138,162.84 and Y = 264,641.52; thence South 4,472.73 feet to a point of intersection with the boundary of State Lease No. 12683, as amended, having Coordinates of X = 2,138,162.84 and Y = 260,168.79; thence along the boundary of said State Lease No. 12683 the following courses: Southwesterly along an arc to the right having a radius of 880.00 feet to a point having Coordinates of X = 2,138,114.99 and Y = 260,150.00; South 63 degrees 53 minutes 11 seconds West 77.47 feet to a point having Coordinates of X = 2,138,045.42 and Y = 260,115.90; South 00 degrees 51 minutes 37 seconds East 710.70 feet to a point having Coordinates of X = 2,138,056.09 and Y = 259,405.28 and North 77 degrees 15 minutes 52 seconds East 109.44 feet to a point having Coordinates of X = 2,138,162.84 and Y = 259,429.40; thence South 7,087.89 feet to a point having Coordinates of X = 2,138,162.84 and Y = 252,341.52; thence West 13,242.76 feet to a point having Coordinates of X = 2,124,920.08 and Y = 252,341.52; thence North 964.79 feet to a point on the South boundary of State Lease No. 3475, as amended, having Coordinates of X = 2,124,920.08 and Y = 253,306.30; thence along the boundary of said State Lease No. 3475 the following courses: North 89 degrees 08 minutes 28 seconds East 2,992.49 feet to its Southeast corner having Coordinates of X = 2,127,912.24 and Y = 253,351.16 and North 01 degrees 00 minutes 41 seconds West approximately 4,456 feet to a point of intersection with the boundary of State Lease No. 12105, as amended; thence Northerly and Westerly along the meanders of the boundary of said State Lease No. 12105 to the Southeast corner of Operating Agreement AO 0136; thence Northeasterly and Northwesterly along the boundary of said Operating Agreement AO 0136 to a point of intersection with the boundary of said State Lease No. 12105; thence Southwesterly along the meanders of the boundary of said State Lease No. 12105 to a point of intersection with the North boundary of said State Lease No. 3475; thence Westerly approximately 25 feet along the boundary of said State Lease No. 3475 to a point having Coordinates of X = 2,124,920.08 and Y = 258,586.88; thence North 6,054.64 feet to the point of beginning, **LESS AND EXPECT** that portion, if any, of Operating Agreement AO 0136 and State Lease No. 12105, as amended, that may lie within the above described tract, containing approximately **419 acres**, all as more particularly outlined on a plat on file in the Office of Mineral Resources, Department of Natural Resources. All bearings, distances and coordinates are based on Louisiana Coordinate System of 1927, (North or South Zone), where applicable.

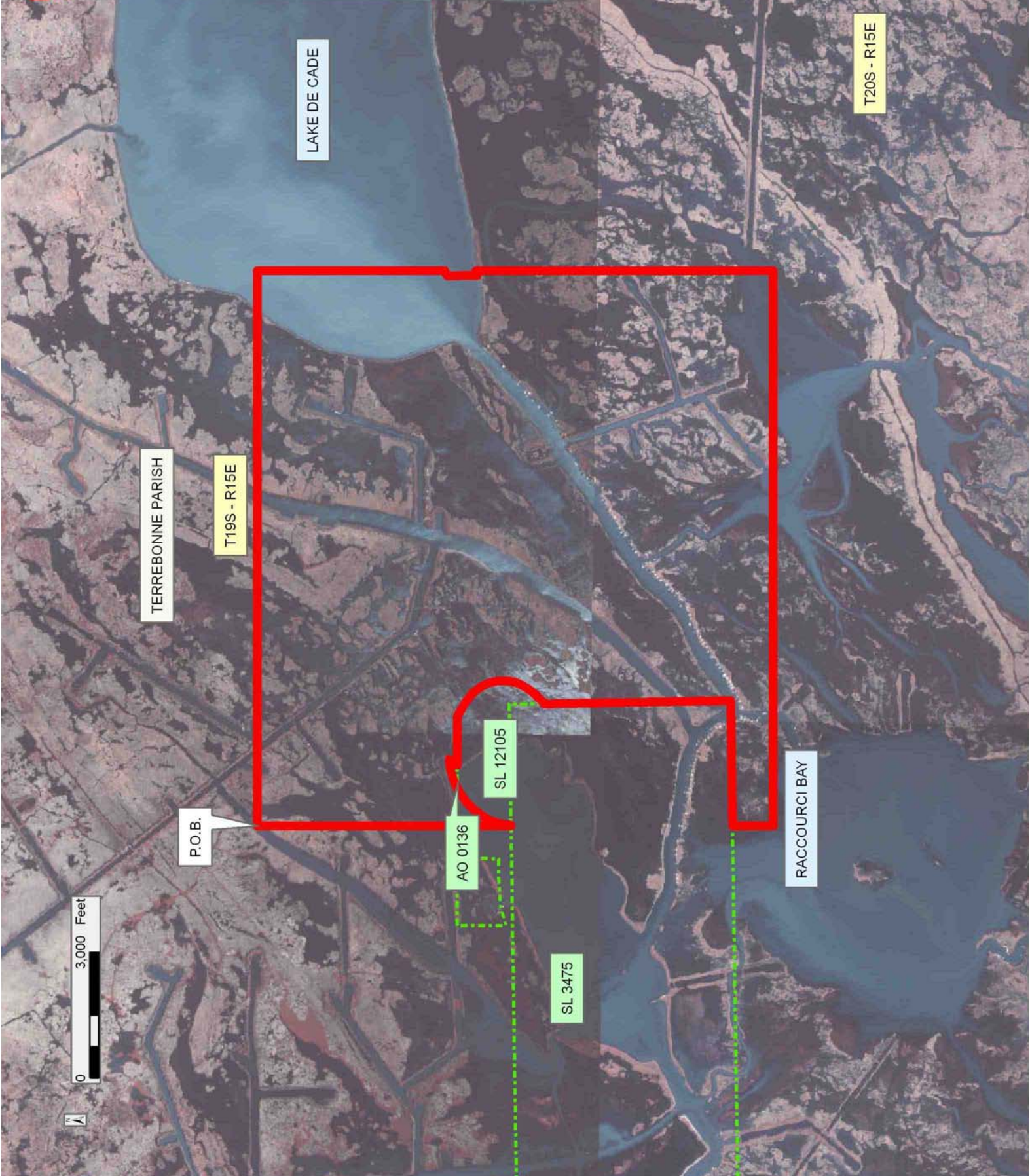
NOTE: The above description of the Tract nominated for lease has been provided and corrected, where required, exclusively by the nomination party. Any mineral lease selected from this Tract and awarded by the Louisiana State Mineral Board shall be without warranty of any kind, either express, implied, or statutory, including, but not limited to, the implied warranties of merchantability and fitness for a particular purpose. Should the mineral lease awarded by the Louisiana State Mineral Board be subsequently modified, cancelled or abrogated due to the existence of conflicting leases, operating agreements, private claims or other future obligations or conditions which may affect all or any portion of the leased Tract, it shall not relieve the Lessee of the obligation to pay any bonus due thereon to the Louisiana State Mineral Board, nor shall the Louisiana State Mineral Board be obligated to refund any consideration paid by the Lessor prior to such modification, cancellation, or abrogation, including, but not limited to, bonuses, rentals and royalties.

NOTE: The State of Louisiana does hereby reserve, and this lease shall be subject to, the imprescriptible right of surface use in the nature of a servitude in favor of the Department of Natural Resources, including its Offices and Commissions, for the sole purpose of implementing, constructing, servicing and maintaining approved coastal zone management and/or restoration projects. Utilization of any and all rights derived under this lease by the mineral lessee, its agents, successors or assigns, shall not interfere with nor hinder the reasonable surface use by the Department of Natural Resources, its Offices or Commissions, as herein above reserved.

Applicant: AMEX RESOURCES, INC.

Bidder	Cash Payment	Price/Acre	Rental	Oil	Gas	Other

Legend
08120157
Active_Leases
DOQQ2004



TRACT 40639 - Terrebonne Parish, Louisiana

All of the lands now or formerly constituting the beds and bottoms of all water bodies of every nature and description as to which title is vested in the State of Louisiana, together with all islands arising therein and other lands formed by accretion or by reliction, where allowed by law, excepting tax adjudicated lands, and not presently under mineral lease on December 10, 2008, situated in Terrebonne Parish, Louisiana, and more particularly described as follows: Beginning at a point having Coordinates of X = 2,098,500.00 and Y = 264,367.16; thence East 18,000.00 feet to a point having Coordinates of X = 2,116,500.00 and Y = 264,367.16; thence South 5,906.52 feet to a point on the Northern boundary of State Lease No. 3475, as amended, having Coordinates of X = 2,116,500.00 and Y = 258,460.65; thence South 89 degrees 08 minutes 28 seconds West 1,879.69 feet along the Northern boundary of said State Lease No. 3475 to its Northwest corner, also being the Northeast corner of State Lease No. 3401, as amended, having Coordinates of X = 2,114,620.52 and Y = 258,432.47; thence South 89 degrees 08 minutes 28 seconds West approximately 5,630 feet along the Northern boundary of said State Lease No. 3401 to its Northwest corner; thence Westerly approximately 10,491 feet on a straight line to a point having Coordinates of X = 2,098,500.00 and Y = 258,367.16; thence North 6,000.00 feet to the point of beginning, **LESS AND EXPECT** that portion, if any, of State Lease No. 3401, as amended, which may lie within the above described tract, containing approximately **97 acres**, all as more particularly outlined on a plat on file in the Office of Mineral Resources, Department of Natural Resources. All bearings, distances and coordinates are based on Louisiana Coordinate System of 1927, (North or South Zone), where applicable.

NOTE: The above description of the Tract nominated for lease has been provided and corrected, where required, exclusively by the nomination party. Any mineral lease selected from this Tract and awarded by the Louisiana State Mineral Board shall be without warranty of any kind, either express, implied, or statutory, including, but not limited to, the implied warranties of merchantability and fitness for a particular purpose. Should the mineral lease awarded by the Louisiana State Mineral Board be subsequently modified, cancelled or abrogated due to the existence of conflicting leases, operating agreements, private claims or other future obligations or conditions which may affect all or any portion of the leased Tract, it shall not relieve the Lessee of the obligation to pay any bonus due thereon to the Louisiana State Mineral Board, nor shall the Louisiana State Mineral Board be obligated to refund any consideration paid by the Lessor prior to such modification, cancellation, or abrogation, including, but not limited to, bonuses, rentals and royalties.

NOTE: The State of Louisiana does hereby reserve, and this lease shall be subject to, the imprescriptible right of surface use in the nature of a servitude in favor of the Department of Natural Resources, including its Offices and Commissions, for the sole purpose of implementing, constructing, servicing and maintaining approved coastal zone management

and/or restoration projects. Utilization of any and all rights derived under this lease by the mineral lessee, its agents, successors or assigns, shall not interfere with nor hinder the reasonable surface use by the Department of Natural Resources, its Offices or Commissions, as herein above reserved.

Applicant: AMEX RESOURCES, INC.

Bidder	Cash Payment	Price/Acre	Rental	Oil	Gas	Other

Legend
08120153
Active_Leases
DOQQ2004

TERREBONNE PARISH

CARENCRO BAYOU

T19S - R14E

P.O.B.

SL 3475

SL 3401

BAY LONG



TRACT 40640 - Terrebonne Parish, Louisiana

All of the lands now or formerly constituting the beds and bottoms of all water bodies of every nature and description as to which title is vested in the State of Louisiana, together with all islands arising therein and other lands formed by accretion or by reliction, where allowed by law, excepting tax adjudicated lands, and not presently under mineral lease on December 10, 2008, situated in Terrebonne Parish, Louisiana, and more particularly described as follows: Beginning at a point having Coordinates of X = 2,204,100.00 and Y = 261,700.00; thence East 15,500.00 feet to a point having Coordinates of X = 2,219,600.00 and Y = 261,700.00; thence South 6,000.00 feet to a point having Coordinates of X = 2,219,600.00 and Y = 255,700.00; thence West 2,250.00 feet to a point having Coordinates of X = 2,217,350.00 and Y = 255,700.00; thence North 500.00 feet to a point having Coordinates of X = 2,217,350.00 and Y = 256,200.00; thence West 10,450.00 feet to a point having Coordinates of X = 2,206,900.00 and Y = 256,200.00; thence South 500.00 feet to a point having Coordinates of X = 2,206,900.00 and Y = 255,700.00; thence West 2,800.00 feet to a point having Coordinates of X = 2,204,100.00 and Y = 255,700.00; thence North 6,000.00 feet to the point of beginning, containing approximately **1,154 acres**, all as more particularly outlined on a plat on file in the Office of Mineral Resources, Department of Natural Resources. All bearings, distances and coordinates are based on Louisiana Coordinate System of 1927, (North or South Zone), where applicable.

NOTE: The above description of the Tract nominated for lease has been provided and corrected, where required, exclusively by the nomination party. Any mineral lease selected from this Tract and awarded by the Louisiana State Mineral Board shall be without warranty of any kind, either express, implied, or statutory, including, but not limited to, the implied warranties of merchantability and fitness for a particular purpose. Should the mineral lease awarded by the Louisiana State Mineral Board be subsequently modified, cancelled or abrogated due to the existence of conflicting leases, operating agreements, private claims or other future obligations or conditions which may affect all or any portion of the leased Tract, it shall not relieve the Lessee of the obligation to pay any bonus due thereon to the Louisiana State Mineral Board, nor shall the Louisiana State Mineral Board be obligated to refund any consideration paid by the Lessor prior to such modification, cancellation, or abrogation, including, but not limited to, bonuses, rentals and royalties.

NOTE: The State of Louisiana does hereby reserve, and this lease shall be subject to, the imprescriptible right of surface use in the nature of a servitude in favor of the Department of Natural Resources, including its Offices and Commissions, for the sole purpose of implementing, constructing, servicing and maintaining approved coastal zone management and/or restoration projects. Utilization of any and all rights derived under this lease by the mineral lessee, its agents, successors or assigns, shall not interfere with nor hinder the reasonable surface use by the

Department of Natural Resources, its Offices or Commissions, as herein above reserved.

Applicant: PETRO-LAND RESOURCES, INC.

Bidder	Cash Payment	Price/Acre	Rental	Oil	Gas	Other

Legend
08120091
Active_Leases
DOQQ2004

TERREBONNE PARISH

LAKE BOUDREAU

LAKE QUITMAN

T19S - R17E

P.O.B.

T20S - R17E

