

TRACT 40621 - Plaquemines Parish, Louisiana

All of the lands now or formerly constituting the beds and bottoms of all water bodies of every nature and description as to which title is vested in the State of Louisiana, together with all islands arising therein and other lands formed by accretion or by reliction, where allowed by law, excepting tax adjudicated lands, and not presently under mineral lease on December 10, 2008, situated in Plaquemines Parish, Louisiana, and more particularly described as follows: Beginning at a point having Coordinates of X = 2,453,747.60 and Y = 291,949.81; thence East 6,666.14 feet to a point on the Western boundary of State Lease No. 8512 having Coordinates of X = 2,460,413.74 and Y = 291,949.81; thence along the boundary of said State Lease No. 8512 the following courses: South 26 degrees 02 minutes 18 West 17.13 feet to a point having Coordinates of X = 2,460,406.22 and Y = 291,934.42; South 62 degrees 58 minutes 06 seconds East 3,732.93 feet to a point having Coordinates of X = 2,463,731.26 and Y = 290,237.91; North 87 degrees 24 minutes 35 seconds East 392.30 feet to a point having Coordinates of X = 2,464,123.15 and Y = 290,255.64; South 85 degrees 16 minutes 00 seconds East 300.06 feet to a point having Coordinates of X = 2,464,422.19 and Y = 290,230.88; South 78 degrees 48 minutes 21 seconds East 240.61 feet to a point having Coordinates of X = 2,464,658.22 and Y = 290,184.17; South 75 degrees 57 minutes 47 seconds East 218.56 feet to a point having Coordinates of X = 2,464,870.26 and Y = 290,131.15; South 70 degrees 06 minutes 25 seconds East 293.54 feet to a point having Coordinates of X = 2,465,146.28 and Y = 290,031.27; South 57 degrees 55 minutes 59 seconds East 364.28 feet to a point having Coordinates of X = 2,465,454.98 and Y = 289,837.87; South 49 degrees 40 minutes 50 seconds East 256.67 feet to a point having Coordinates of X = 2,465,650.68 and Y = 289,671.79; South 44 degrees 36 minutes 36 seconds East 245.63 feet to a point on the North line of State Lease No. 9571 having Coordinates of X = 2,465,823.18 and Y = 289,496.93; thence along the boundary of said State Lease No. 9571 the following courses: West 123.18 feet to a point having Coordinates of X = 2,465,700.00 and Y = 289,496.93 and South 2,391.55 feet to its Southwest corner, said corner also being a point on the Northern boundary of State Lease No. 15248, having Coordinates of X = 2,465,700.00 and Y = 287,105.38; thence along the boundary of said State Lease No. 15248 the following courses: South 80 degrees 14 minutes 52 seconds West 903.72 feet to a point having Coordinates of X = 2,464,809.34 and Y = 286,952.30; North 89 degrees 28 minutes 26 seconds West 391.06 feet to a point having Coordinates of X = 2,464,418.30 and Y = 286,955.89; North 85 degrees 25 minutes 05 seconds West 177.95 feet to a point having Coordinates of X = 2,464,240.92 and Y = 286,970.11; North 87 degrees 09 minutes 51 seconds West 241.64 feet to a point having Coordinates of X = 2,463,999.57 and Y = 286,982.07; South 85 degrees 07 minutes 57 seconds West 101.99 feet to its Northwest corner, said corner also being the Northeast corner of State Lease No. 15246, having Coordinates of X = 2,463,879.95 and Y = 286,973.42; thence along the boundary of said State Lease No. 15246 the following courses: South 86 degrees 26 minutes 45 seconds West 129.15 feet to a point having Coordinates of X = 2,463,769.05 and Y = 286,965.40; South 84 degrees 19 minutes 37 seconds West 154.48 feet to a point having Coordinates of X = 2,463,615.32 and Y = 286,950.13;

South 76 degrees 05 minutes 34 seconds West 243.48 feet to a point having Coordinates of X = 2,463,378.98 and Y = 286,891.61; South 71 degrees 29 minutes 57 seconds West 247.29 feet to a point having Coordinates of X = 2,463,144.47 and Y = 286,813.14; South 70 degrees 20 minutes 49 seconds West 285.74 feet to a point having Coordinates of X = 2,462,875.37 and Y = 286,717.04; South 81 degrees 59 minutes 31 seconds East 152.26 feet to a point having Coordinates of X = 2,463,026.15 and Y = 286,695.83; South 60 degrees 31 minutes 46 seconds East 146.54 feet to a point having Coordinates of X = 2,463,153.73 and Y = 286,623.74; South 50 degrees 29 minutes 03 seconds East 355.72 feet to a point having Coordinates of X = 2,463,428.15 and Y = 286,397.39; South 49 degrees 25 minutes 33 seconds East 456.56 feet to a point having Coordinates of X = 2,463,774.94 and Y = 286,100.43; South 129.10 feet to it Southeast corner, said corner also being a point the Western boundary of said State Lease No. 15248, having Coordinates of X = 2,463,904.04 and Y = 286,100.43; thence along the boundary of said State Lease No. 15248 the following courses: South 00 degrees 23 minutes 58 seconds East 101.44 feet to a point having Coordinates of X = 2,463,904.74 and Y = 285,999.00; South 59 degrees 17 minutes 16 seconds East 170.96 feet to a point having Coordinates of X = 2,464,051.71 and Y = 285,911.69; South 72 degrees 06 minutes 04 seconds East 304.92 feet to a point having Coordinates of X = 2,464,341.88 and Y = 285,817.97; South 84 degrees 02 minutes 21 seconds East 279.90 feet to a point having Coordinates of X = 2,464,620.26 and Y = 285,788.92; North 80 degrees 21 minutes 29 seconds East 300.06 feet to a point having Coordinates of X = 2,464,916.08 and Y = 285,839.17; North 74 degrees 52 minutes 03 seconds East 424.20 feet to a point having Coordinates of X = 2,465,325.58 and Y = 285,949.90; North 69 degrees 43 minutes 40 seconds East 49.66 feet to a point having Coordinates of X = 2,465,372.16 and Y = 285,967.11; thence South 267.45 feet to the Northwest corner of State Lease No. 17376, as amended, having Coordinates of X = 2,465,372.16 and Y = 285,699.65; thence South 3,755.10 feet along the West line of said State Lease No. 17376, as amended, to its Southwest corner, said corner also being a point on the Northern boundary of State Lease No. 19336, having Coordinates of X = 2,465,372.16 and Y = 281,944.55; thence along the boundary of said State Lease No. 19336 the following courses: West 1,008.29 feet to a point having Coordinates of X = 2,464,363.87 and Y = 281,944.55 and South 00 degrees 47 minutes 30 seconds East 2,878.20 feet to its Southwest corner, said corner also being a point on the North boundary of State Lease No. 18671, having Coordinates of X = 2,464,403.63 and Y = 279,066.62; thence North 86 degrees 02 minutes 56 seconds West 6,148.24 feet along the Northern boundary of said State Lease No. 18671 to its Northwest corner, said corner also being the Northeast corner of State Lease No. 18688, having Coordinates of X = 2,458,270.00 and Y = 279,490.26; thence along the boundary of said State Lease No. 18688 the following courses: North 86 degrees 02 minutes 56 seconds West 1,422.52 feet to a point having Coordinates of X = 2,456,850.86 and Y = 279,588.28 and North 69 degrees 38 minutes 02 seconds West 3,221.23 feet to its Northwest corner, said corner also being a point on the East line of State Lease No. 18688, having Coordinates of X = 2,453,830.99 and Y =

280,709.32; thence North 01 degrees 10 minutes 50 seconds West 76.69 feet along the East line of said State Lease No. 18688 to a point having Coordinates of X = 2,453,829.41 and Y = 280,785.99; thence North 01 degrees 50 minutes 28 seconds West 2,546.53 feet along the East line of said State Lease No. 18688 to its Northeast corner having Coordinates of X = 2,453,747.60 and Y = 283,331.21; thence North 8,618.60 feet to the Point of Beginning, containing approximately **2,453 acres**, all as more particularly outlined on a plat on file in the Office of Mineral Resources, Department of Natural Resources. All bearings, distances and coordinates are based on Louisiana Coordinate System of 1927, (North or South Zone), where applicable.

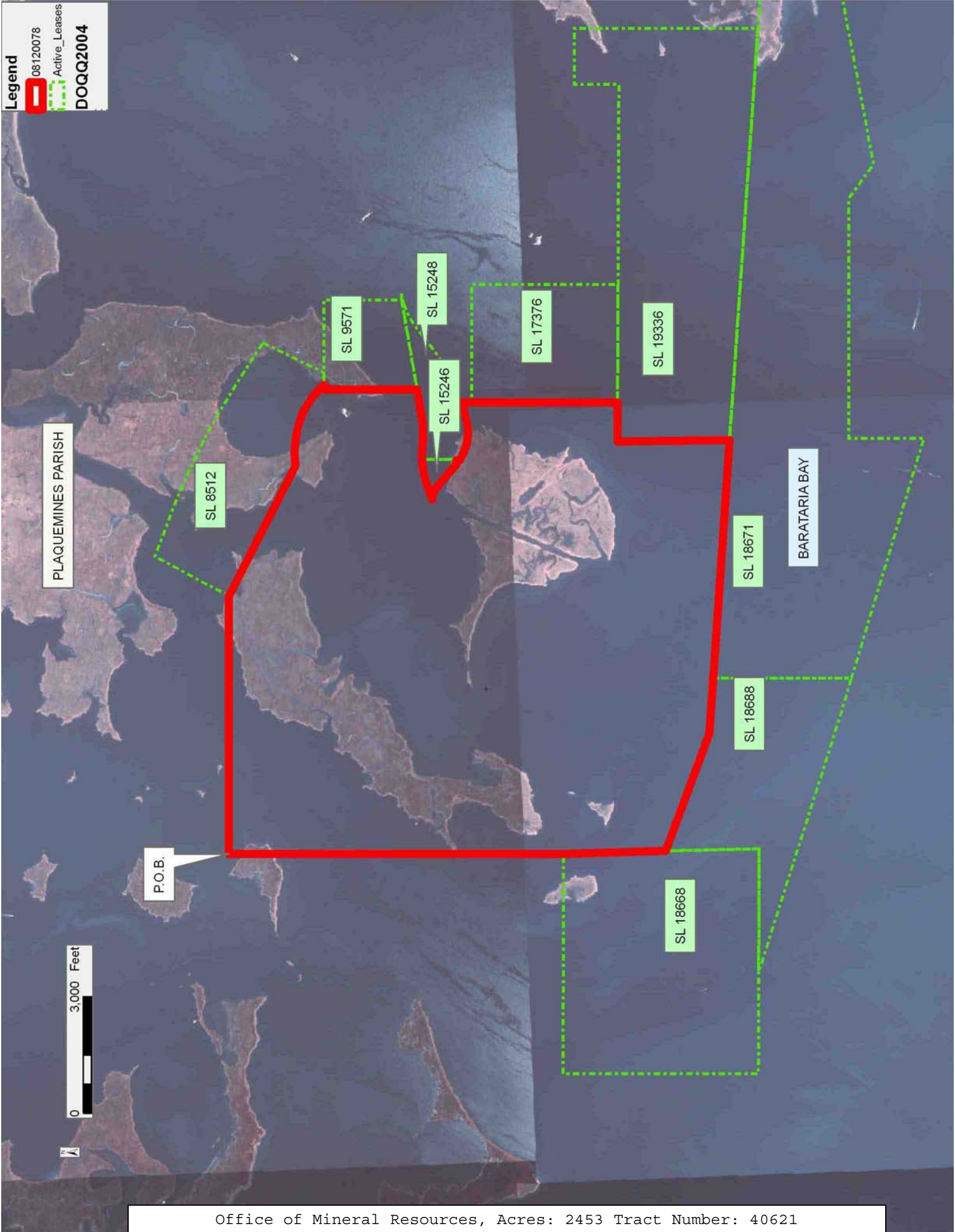
NOTE: The above description of the Tract nominated for lease has been provided and corrected, where required, exclusively by the nomination party. Any mineral lease selected from this Tract and awarded by the Louisiana State Mineral Board shall be without warranty of any kind, either express, implied, or statutory, including, but not limited to, the implied warranties of merchantability and fitness for a particular purpose. Should the mineral lease awarded by the Louisiana State Mineral Board be subsequently modified, cancelled or abrogated due to the existence of conflicting leases, operating agreements, private claims or other future obligations or conditions which may affect all or any portion of the leased Tract, it shall not relieve the Lessee of the obligation to pay any bonus due thereon to the Louisiana State Mineral Board, nor shall the Louisiana State Mineral Board be obligated to refund any consideration paid by the Lessor prior to such modification, cancellation, or abrogation, including, but not limited to, bonuses, rentals and royalties.

NOTE: The State of Louisiana does hereby reserve, and this lease shall be subject to, the imprescriptible right of surface use in the nature of a servitude in favor of the Department of Natural Resources, including its Offices and Commissions, for the sole purpose of implementing, constructing, servicing and maintaining approved coastal zone management and/or restoration projects. Utilization of any and all rights derived under this lease by the mineral lessee, its agents, successors or assigns, shall not interfere with nor hinder the reasonable surface use by the Department of Natural Resources, its Offices or Commissions, as herein above reserved.

Applicant: QUALITY PRODUCTION SERVICES

Bidder	Cash Payment	Price/Acre	Rental	Oil	Gas	Other

Legend
08120078
Active_Leases
DOQQ2004



TRACT 40622 - Terrebonne Parish, Louisiana

All of the lands now or formerly constituting the beds and bottoms of all water bodies of every nature and description as to which title is vested in the State of Louisiana, together with all islands arising therein and other lands formed by accretion or by reliction, where allowed by law, excepting tax adjudicated lands, and not presently under mineral lease on December 10, 2008, situated in Terrebonne Parish, Louisiana, and more particularly described as follows: Beginning at a point having Coordinates of X = 2,198,100.00 and Y = 285,000.00; thence East 14,752.43 feet to a point having Coordinates of X = 2,212,852.43 and Y = 285,000.00; thence South 2,789.60 feet to the Northeast corner of State Lease No. 18891 having Coordinates of X = 2,212,852.43 and Y = 282,210.40; thence along the boundary of said State Lease No. 18891 the following courses: South 88 degrees 56 minutes 40 seconds West 6,478.17 feet to its Northwest corner having Coordinates of X = 2,206,375.37 and Y = 282,091.07; South 00 degrees 00 minutes 09 seconds East 4,133.17 feet to its Southwest corner having Coordinates of X = 2,206,375.54 and Y = 277,957.90 and East 3,244.46 feet to the Northwest corner of State Lease No. 18892 having Coordinates of X = 2,209,620.00 and Y = 277,957.90; thence South 3,457.90 feet along the West boundary of said State Lease No. 18892 to a point having Coordinates of X = 2,209,620.00 and Y = 274,500.00; thence West 11,520.00 feet to a point having Coordinates of X = 2,198,100.00 and Y = 274,500.00; thence North 10,500.00 feet to the point of beginning, containing approximately **205 acres**, all as more particularly outlined on a plat on file in the Office of Mineral Resources, Department of Natural Resources. All bearings, distances and coordinates are based on Louisiana Coordinate System of 1927, (North or South Zone), where applicable.

NOTE: The above description of the Tract nominated for lease has been provided and corrected, where required, exclusively by the nomination party. Any mineral lease selected from this Tract and awarded by the Louisiana State Mineral Board shall be without warranty of any kind, either express, implied, or statutory, including, but not limited to, the implied warranties of merchantability and fitness for a particular purpose. Should the mineral lease awarded by the Louisiana State Mineral Board be subsequently modified, cancelled or abrogated due to the existence of conflicting leases, operating agreements, private claims or other future obligations or conditions which may affect all or any portion of the leased Tract, it shall not relieve the Lessee of the obligation to pay any bonus due thereon to the Louisiana State Mineral Board, nor shall the Louisiana State Mineral Board be obligated to refund any consideration paid by the Lessor prior to such modification, cancellation, or abrogation, including, but not limited to, bonuses, rentals and royalties.

NOTE: The State of Louisiana does hereby reserve, and this lease shall be subject to, the imprescriptible right of surface use in the nature of a servitude in favor of the Department of Natural Resources, including its Offices and Commissions, for the sole purpose of implementing, constructing, servicing and maintaining approved coastal zone management

and/or restoration projects. Utilization of any and all rights derived under this lease by the mineral lessee, its agents, successors or assigns, shall not interfere with nor hinder the reasonable surface use by the Department of Natural Resources, its Offices or Commissions, as herein above reserved.

Applicant: PETRO-LAND RESOURCES, INC.

Bidder	Cash Payment	Price/Acre	Rental	Oil	Gas	Other

Legend
08120092
Active_Leases
DOQQ2004

TERREBONNE PARISH

T19S - R18E

BAYOU GRAND CAILLOU



P.O.B.



SL 18891

SL 18892

LAKE BOUDREAU

TRACT 40623 - Terrebonne Parish, Louisiana

All of the lands now or formerly constituting the beds and bottoms of all water bodies of every nature and description as to which title is vested in the State of Louisiana, together with all islands arising therein and other lands formed by accretion or by reliction, where allowed by law, excepting tax adjudicated lands, and not presently under mineral lease on December 10, 2008, situated in Terrebonne Parish, Louisiana, and more particularly described as follows: Beginning at a point having Coordinates of X = 2,212,852.43 and Y = 285,000.00; thence East 16,801.10 feet to a point having Coordinates of X = 2,229,653.54 and Y = 285,000.00; thence South 17,300.00 feet to a point having Coordinates of X = 2,229,653.54 and Y = 267,700.00; thence West 15,845.57 feet to a point having Coordinates of X = 2,213,807.97 and Y = 267,700.00; thence North 734.07 feet to the Southwest corner of State Lease No. 17967 having Coordinates of X = 2,213,807.97 and Y = 268,434.07; thence North 79 degrees 52 minutes 33 seconds East 3,314.97 feet along the South boundary of said State Lease No. 17967 to its Southeast corner, also being the Southwest corner of State Lease No. 17755, as amended, having Coordinates of X = 2,217,071.32 and Y = 269,016.79; thence along the boundary of said State Lease No. 17755 the following courses: North 89 degrees 50 minutes 02 seconds East 1,809.24 feet to its Southeast corner having Coordinates of X = 2,218,880.56 and Y = 269,022.03 and North 893.57 feet to its Northeast corner, also being a point on the South boundary of State Lease No. 5351, as amended, having Coordinates of X = 2,218,880.56 and Y = 269,915.60; thence along the boundary of said State Lease No. 5351 the following courses: North 84 degrees 00 minutes 14 seconds East 2,885.23 feet to its Southeast corner having Coordinates of X = 2,221,750.00 and Y = 270,217.00; North 7,633.00 feet to its Northeast corner having Coordinates of X = 2,221,750.00 and Y = 277,850.00; West 3,058.40 feet to its Northwest corner having Coordinates of X = 2,218,691.60 and Y = 277,850.00 and South 21 degrees 37 minutes 55 seconds West 784.82 feet to the Northeast corner of State Lease No. 17754 having Coordinates of X = 2,218,402.28 and Y = 277,120.45; thence North 65 degrees 53 minutes 24 seconds West 6,080.16 feet along the North boundary of said State Lease No. 17754 to its Northwest corner, also being a point on the East boundary of State Lease No. 18891 having Coordinates of X = 2,212,852.54 and Y = 279,604.14; thence North 00 degrees 00 minutes 04 seconds West 5,395.86 feet along the East boundary of said State Lease No. 18891 and to the point of beginning, **LESS AND EXPECT** all of that portion of State Lease No. 17736, as amended, that may lie within the above described tract, above described tract containing approximately **316 acres**, all as more particularly outlined on a plat on file in the Office of Mineral Resources, Department of Natural Resources. All bearings, distances and coordinates are based on Louisiana Coordinate System of 1927, (North or South Zone), where applicable.

NOTE: The above description of the Tract nominated for lease has been provided and corrected, where required, exclusively by the nomination party. Any mineral lease selected from this Tract and awarded by the

Louisiana State Mineral Board shall be without warranty of any kind, either express, implied, or statutory, including, but not limited to, the implied warranties of merchantability and fitness for a particular purpose. Should the mineral lease awarded by the Louisiana State Mineral Board be subsequently modified, cancelled or abrogated due to the existence of conflicting leases, operating agreements, private claims or other future obligations or conditions which may affect all or any portion of the leased Tract, it shall not relieve the Lessee of the obligation to pay any bonus due thereon to the Louisiana State Mineral Board, nor shall the Louisiana State Mineral Board be obligated to refund any consideration paid by the Lessor prior to such modification, cancellation, or abrogation, including, but not limited to, bonuses, rentals and royalties.

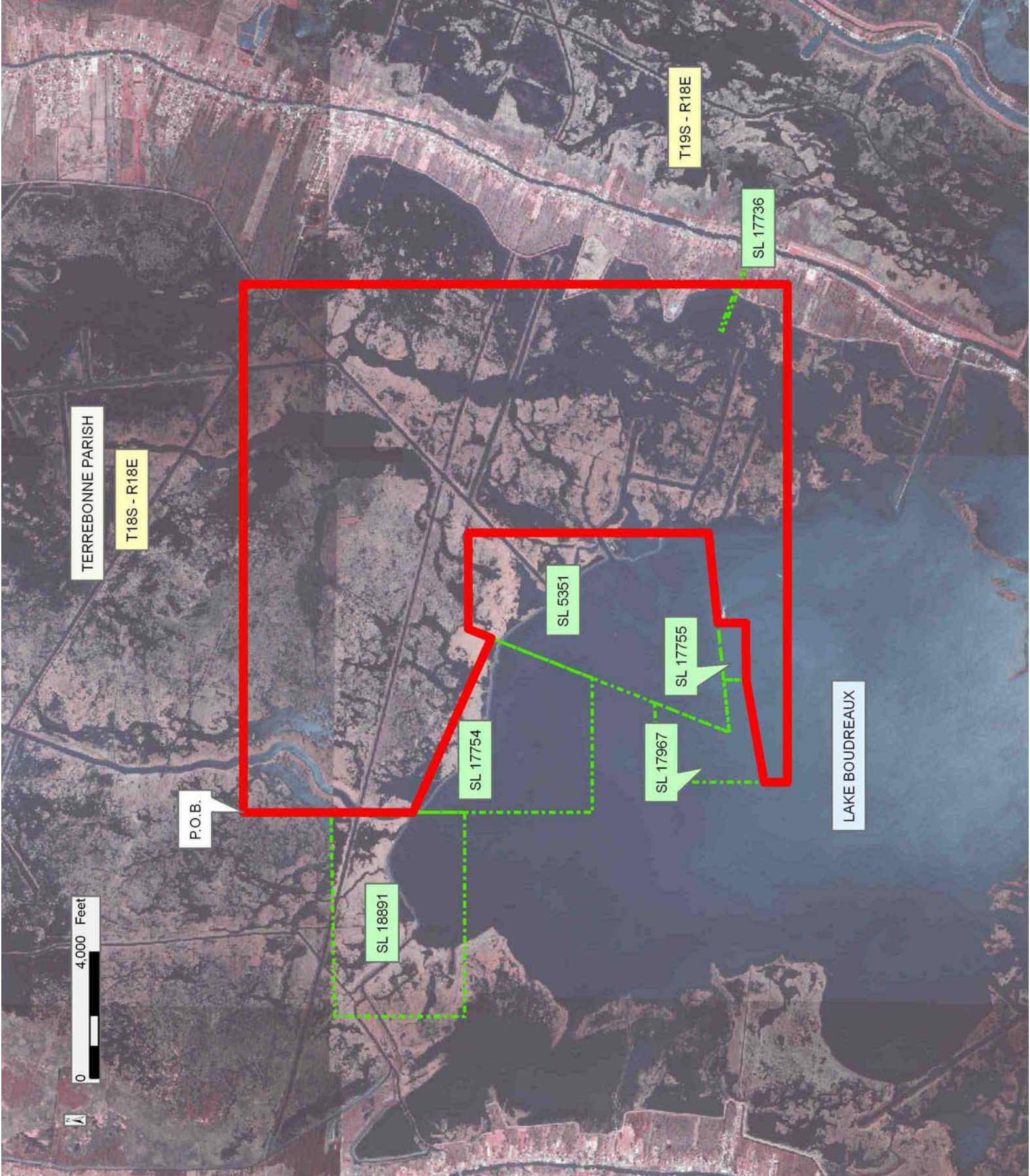
NOTE: The State of Louisiana does hereby reserve, and this lease shall be subject to, the imprescriptible right of surface use in the nature of a servitude in favor of the Department of Natural Resources, including its Offices and Commissions, for the sole purpose of implementing, constructing, servicing and maintaining approved coastal zone management and/or restoration projects. Utilization of any and all rights derived under this lease by the mineral lessee, its agents, successors or assigns, shall not interfere with nor hinder the reasonable surface use by the Department of Natural Resources, its Offices or Commissions, as herein above reserved.

Applicant: PETRO-LAND RESOURCES, INC.

Bidder	Cash Payment	Price/Acre	Rental	Oil	Gas	Other

Legend

- 08120085
- Active_Leases
- DOQQ2004



TRACT 40624 - Terrebonne Parish, Louisiana

All of the lands now or formerly constituting the beds and bottoms of all water bodies of every nature and description as to which title is vested in the State of Louisiana, together with all islands arising therein and other lands formed by accretion or by reliction, where allowed by law, excepting tax adjudicated lands, and not presently under mineral lease on December 10, 2008, situated in Terrebonne Parish, Louisiana, and more particularly described as follows: Beginning at a point having Coordinates of X = 2,092,500.00 and Y = 282,100.00; thence East 18,000.00 feet to a point having Coordinates of X = 2,110,500.00 and Y = 282,100.00; thence South 10,400.00 feet to a point having Coordinates of X = 2,110,500.00 and Y = 271,700.00; thence West 18,000.00 feet to a point having Coordinates of X = 2,092,500.00 and Y = 271,700.00; thence North 10,400.00 feet to the point of beginning, containing approximately **8 acres**, all as more particularly outlined on a plat on file in the Office of Mineral Resources, Department of Natural Resources. All bearings, distances and coordinates are based on Louisiana Coordinate System of 1927, (North or South Zone), where applicable.

NOTE: The above description of the Tract nominated for lease has been provided and corrected, where required, exclusively by the nomination party. Any mineral lease selected from this Tract and awarded by the Louisiana State Mineral Board shall be without warranty of any kind, either express, implied, or statutory, including, but not limited to, the implied warranties of merchantability and fitness for a particular purpose. Should the mineral lease awarded by the Louisiana State Mineral Board be subsequently modified, cancelled or abrogated due to the existence of conflicting leases, operating agreements, private claims or other future obligations or conditions which may affect all or any portion of the leased Tract, it shall not relieve the Lessee of the obligation to pay any bonus due thereon to the Louisiana State Mineral Board, nor shall the Louisiana State Mineral Board be obligated to refund any consideration paid by the Lessor prior to such modification, cancellation, or abrogation, including, but not limited to, bonuses, rentals and royalties.

NOTE: The State of Louisiana does hereby reserve, and this lease shall be subject to, the imprescriptible right of surface use in the nature of a servitude in favor of the Department of Natural Resources, including its Offices and Commissions, for the sole purpose of implementing, constructing, servicing and maintaining approved coastal zone management and/or restoration projects. Utilization of any and all rights derived under this lease by the mineral lessee, its agents, successors or assigns, shall not interfere with nor hinder the reasonable surface use by the Department of Natural Resources, its Offices or Commissions, as herein above reserved.

Applicant: AMEX RESOURCES, INC.

Bidder	Cash Payment	Price/Acre	Rental	Oil	Gas	Other

TERREBONNE PARISH

T19S - R14E

CARENCRE BAYOU

P.O.B.

0 3,000 Feet

TRACT 40625 - Terrebonne Parish, Louisiana

All of the lands now or formerly constituting the beds and bottoms of all water bodies of every nature and description as to which title is vested in the State of Louisiana, together with all islands arising therein and other lands formed by accretion or by reliction, where allowed by law, excepting tax adjudicated lands, and not presently under mineral lease on December 10, 2008, situated in Terrebonne Parish, Louisiana, and more particularly described as follows: Beginning at a point having Coordinates of X = 2,148,450.00 and Y = 275,920.00; thence East 18,000.00 feet to a point having Coordinates of X = 2,166,450.00 and Y = 275,920.00; thence South 9,000.00 feet to a point having Coordinates of X = 2,166,450.00 and Y = 266,920.00; thence West 9,570.00 feet to the Northeast corner of State Lease No. 17174 having Coordinates of X = 2,156,880.00 and Y = 266,920.00; thence West 5,280.00 feet along the North boundary of said State Lease No. 17174 to its Northwest corner having Coordinates of X = 2,151,600.00 and Y = 266,920.00; thence West 3,150.00 feet to a point having Coordinates of X = 2,148,450.00 and Y = 266,920.00; thence North 9,000.00 feet to the point of beginning, containing approximately **1,552 acres**, all as more particularly outlined on a plat on file in the Office of Mineral Resources, Department of Natural Resources. All bearings, distances and coordinates are based on Louisiana Coordinate System of 1927, (North or South Zone), where applicable.

NOTE: The above description of the Tract nominated for lease has been provided and corrected, where required, exclusively by the nomination party. Any mineral lease selected from this Tract and awarded by the Louisiana State Mineral Board shall be without warranty of any kind, either express, implied, or statutory, including, but not limited to, the implied warranties of merchantability and fitness for a particular purpose. Should the mineral lease awarded by the Louisiana State Mineral Board be subsequently modified, cancelled or abrogated due to the existence of conflicting leases, operating agreements, private claims or other future obligations or conditions which may affect all or any portion of the leased Tract, it shall not relieve the Lessee of the obligation to pay any bonus due thereon to the Louisiana State Mineral Board, nor shall the Louisiana State Mineral Board be obligated to refund any consideration paid by the Lessor prior to such modification, cancellation, or abrogation, including, but not limited to, bonuses, rentals and royalties.

NOTE: The State of Louisiana does hereby reserve, and this lease shall be subject to, the imprescriptible right of surface use in the nature of a servitude in favor of the Department of Natural Resources, including its Offices and Commissions, for the sole purpose of implementing, constructing, servicing and maintaining approved coastal zone management and/or restoration projects. Utilization of any and all rights derived under this lease by the mineral lessee, its agents, successors or assigns, shall not interfere with nor hinder the reasonable surface use by the Department of Natural Resources, its Offices or Commissions, as herein above reserved.

Applicant: PETRO-LAND RESOURCES, INC.

Bidder	Cash Payment	Price/Acre	Rental	Oil	Gas	Other

Legend
08120089
Active_Leases
DOQQ2004

TERREBONNE PARISH

T19S - R16E

SL 17174

LAKE DE CADE

P.O.B.



TRACT 40626 - Terrebonne Parish, Louisiana

All of the lands now or formerly constituting the beds and bottoms of all water bodies of every nature and description as to which title is vested in the State of Louisiana, together with all islands arising therein and other lands formed by accretion or by reliction, where allowed by law, excepting tax adjudicated lands, and not presently under mineral lease on December 10, 2008, situated in Terrebonne Parish, Louisiana, and more particularly described as follows: Beginning at a point having Coordinates of X = 2,198,100.00 and Y = 274,500.00; thence East 11,520.00 feet to a point on the West boundary of State Lease No. 18892 having Coordinates of X = 2,209,620.00 and Y = 274,500.00; thence South 595.86 feet along the West boundary of said State Lease No. 18892 to its Southwest corner, also being the Northwest corner of State Lease No. 18893 having Coordinates of X = 2,209,620.00 and Y = 273,904.14; thence along the boundary of said State Lease No. 18893 the following courses: South 2,736.25 feet to its Southwest corner having Coordinates of X = 2,209,620.00 and Y = 271,167.89 and East 3,232.54 feet to its Southeast corner, also being the Southwest corner of State Lease No. 17968 having Coordinates of X = 2,212,852.54 and Y = 271,167.89; thence East 955.44 feet along the Southern boundary of said State Lease No. 17968 to its Southernmost Southeast corner, also being a point on the West boundary of State Lease No. 17967 having Coordinates of X = 2,213,807.98 and Y = 271,167.89; thence South 00 degrees 00 minutes 01 seconds West 3,467.89 feet along the West boundary of said State Lease No. 17967 and to a point having Coordinates of X = 2,213,807.97 and Y = 267,700.00; thence West 9,707.97 feet to a point having Coordinates of X = 2,204,100.00 and Y = 267,700.00; thence South 2,200.00 feet to a point having Coordinates of X = 2,204,100.00 and Y = 265,500.00; thence West 6,000.00 feet to a point having Coordinates of X = 2,198,100.00 and Y = 265,500.00; thence North 9,000.00 feet to the point of beginning, containing approximately **783 acres**, all as more particularly outlined on a plat on file in the Office of Mineral Resources, Department of Natural Resources. All bearings, distances and coordinates are based on Louisiana Coordinate System of 1927, (North or South Zone), where applicable.

NOTE: The above description of the Tract nominated for lease has been provided and corrected, where required, exclusively by the nomination party. Any mineral lease selected from this Tract and awarded by the Louisiana State Mineral Board shall be without warranty of any kind, either express, implied, or statutory, including, but not limited to, the implied warranties of merchantability and fitness for a particular purpose. Should the mineral lease awarded by the Louisiana State Mineral Board be subsequently modified, cancelled or abrogated due to the existence of conflicting leases, operating agreements, private claims or other future obligations or conditions which may affect all or any portion of the leased Tract, it shall not relieve the Lessee of the obligation to pay any bonus due thereon to the Louisiana State Mineral Board, nor shall the Louisiana State Mineral Board be obligated to refund any consideration

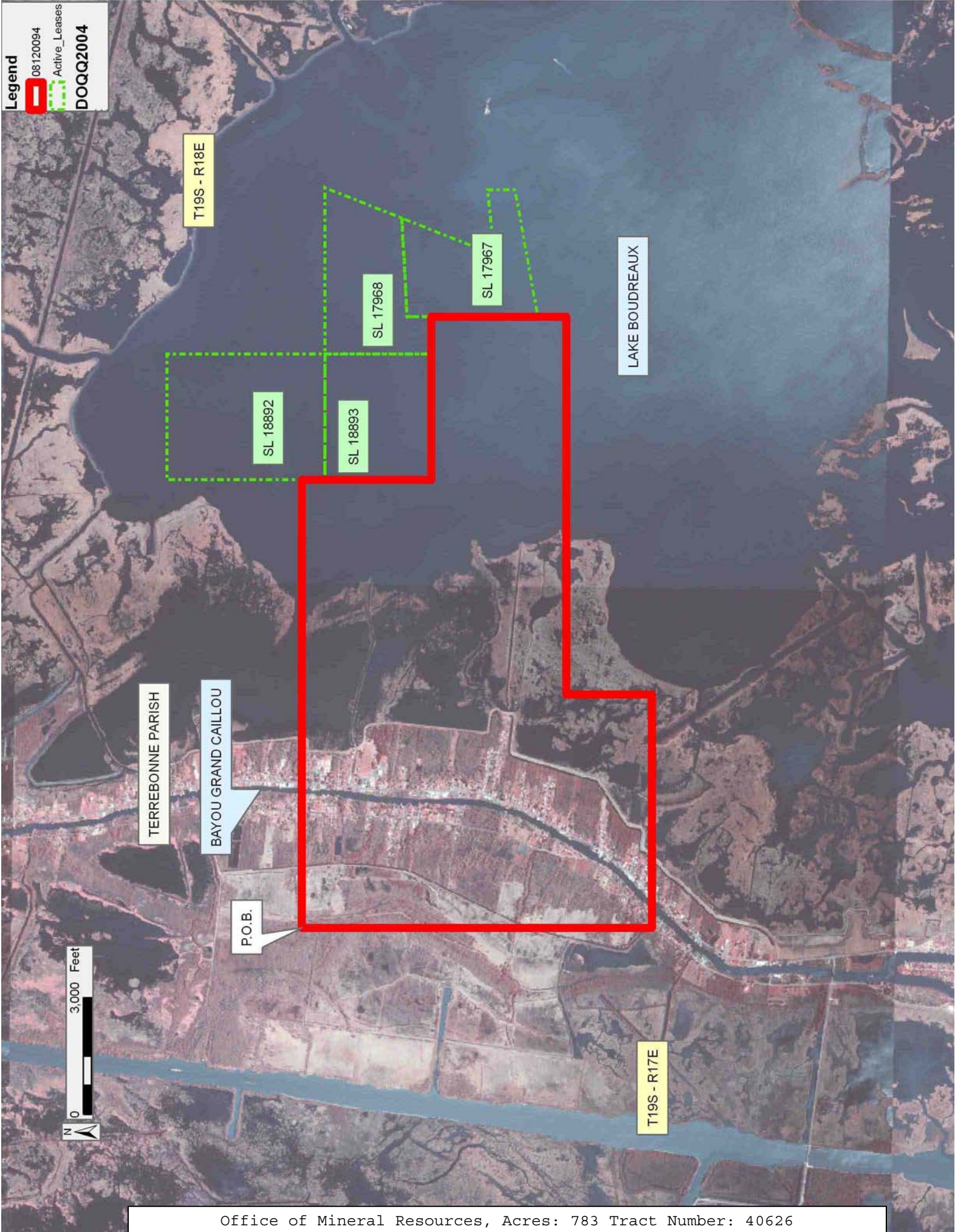
paid by the Lessor prior to such modification, cancellation, or abrogation, including, but not limited to, bonuses, rentals and royalties.

NOTE: The State of Louisiana does hereby reserve, and this lease shall be subject to, the imprescriptible right of surface use in the nature of a servitude in favor of the Department of Natural Resources, including its Offices and Commissions, for the sole purpose of implementing, constructing, servicing and maintaining approved coastal zone management and/or restoration projects. Utilization of any and all rights derived under this lease by the mineral lessee, its agents, successors or assigns, shall not interfere with nor hinder the reasonable surface use by the Department of Natural Resources, its Offices or Commissions, as herein above reserved.

Applicant: PETRO-LAND RESOURCES, INC.

Bidder	Cash Payment	Price/Acre	Rental	Oil	Gas	Other

Legend
08120094
Active_Leases
DOQQ2004



TRACT 40627 - Portion of Blocks 52, and 53, Main Pass Area, Revised, Plaquemines Parish, Louisiana

All of the lands now or formerly constituting the beds and bottoms of all water bodies of every nature and description as to which title is vested in the State of Louisiana, together with all islands arising therein and other lands formed by accretion or by reliction, where allowed by law, excepting tax adjudicated lands, and not presently under mineral lease on December 10, 2008, situated in Plaquemines Parish, Louisiana, and more particularly described as follows: Beginning at the Northeast corner of Block 52, Main Pass Area, Revised, having Coordinates of X = 2,664,850.00 and Y = 266,080.00; thence South 2,750.00 feet along the East line of said Block 52 to the Northwest corner of Block 53, Main Pass Area, Revised, having Coordinates of X = 2,664,850.00 and Y = 263,330.00; thence East 3,993.28 feet along the North line of said Block 53 to the Northwest corner of the Eastern portion of State Lease No. 16667, as amended, having Coordinates of X = 2,668,843.28 and Y = 263,330.00; thence along the boundary of the Eastern portion of said State Lease No. 16667 the following courses: South 15 degrees 03 minutes 28 seconds East 2,795.45 feet to a point having Coordinates of X = 2,669,569.52 and Y = 260,630.54 and North 74 degrees 56 minutes 32 seconds East 2,749.90 feet to its Southeast corner, also being the Southwest corner of State Lease No. 16668 having Coordinates of X = 2,672,225.00 and Y = 261,344.94; thence along the boundary of said State Lease No. 16668 the following courses: North 74 degrees 56 minutes 32 seconds East 1,750.09 feet to a point having Coordinates of X = 2,673,915.00 and Y = 261,799.60 and North 27 degrees 02 minutes 47 seconds East 1,718.32 feet to its Northeast corner, also being a point on the North line of said Block 53 having Coordinates of X = 2,674,696.34 and Y = 263,330.00; thence East 3,358.66 feet along the North line of said Block 53 to a point having Coordinates of X = 2,678,055.00 and Y = 263,330.00; thence South 3,930.00 feet to a point having Coordinates of X = 2,678,055.00 and Y = 259,400.00; thence West 11,905.73 feet to point on the Eastern boundary of State Lease No. 16851 to a point having Coordinates of X = 2,666,149.27 and Y = 259,400.00; thence North 37 degrees 23 minutes 23 seconds East 1,062.47 feet along the Eastern boundary of said State Lease No. 16851 to its Northeast corner, also being the Southeast corner of the Western portion of said State Lease No. 16667 having Coordinates of X = 2,666,794.44 and Y = 260,244.16; thence along the boundary of the Western portion of said State Lease No. 16667 the following courses: North 38 degrees 10 minutes 43 seconds East 1,341.42 feet to a point having Coordinates of X = 2,667,623.59 and Y = 261,298.64; North 57 degrees 56 minutes 23 seconds West 1,314.69 feet to a point having Coordinates of X = 2,666,509.40 and Y = 261,996.49 and South 67 degrees 39 minutes 40 seconds West 1,794.05 feet to its Northwest corner, also being the Northeast corner of State Lease No. 16666, as amended, having Coordinates of X = 2,664,850.00 and Y = 261,314.60; thence South 67 degrees 39 minutes 40 seconds West 1,491.47 feet along the Northern boundary of said State Lease No. 16666 to a point on the Northern boundary of said State Lease No. 16849, as amended, having Coordinates of X = 2,663,470.46 and Y = 260,747.72; thence North 81 degrees 23 minutes 08

seconds West 1,397.22 feet along the Northern boundary of said State Lease No. 16849 to its Northwest corner having Coordinates of X = 2,662,089.00 and Y = 260,957.00; thence North 09 degrees 17 minutes 08 seconds East 2,243.50 feet to the Southeast corner of State Lease No. 16664 having Coordinates of X = 2,662,451.00 and Y = 263,171.10; thence North 03 degrees 23 minutes 02 seconds West 2,913.98 feet along the Eastern boundary of said State Lease No. 16664 to its Northeast corner, also being a point on the North line of said Block 52 having Coordinates of X = 2,662,279.00 and Y = 266,080.00; thence East 2,571.00 feet along the North line of said Block 52 to the point of beginning, containing approximately **1,131.15 acres**, all as more particularly outlined on a plat on file in the Office of Mineral Resources, Department of Natural Resources. All bearings, distances and coordinates are based on Louisiana Coordinate System of 1927, (North or South Zone), where applicable.




NOTE: The above description of the Tract nominated for lease has been provided and corrected, where required, exclusively by the nomination party. Any mineral lease selected from this Tract and awarded by the Louisiana State Mineral Board shall be without warranty of any kind, either express, implied, or statutory, including, but not limited to, the implied warranties of merchantability and fitness for a particular purpose. Should the mineral lease awarded by the Louisiana State Mineral Board be subsequently modified, cancelled or abrogated due to the existence of conflicting leases, operating agreements, private claims or other future obligations or conditions which may affect all or any portion of the leased Tract, it shall not relieve the Lessee of the obligation to pay any bonus due thereon to the Louisiana State Mineral Board, nor shall the Louisiana State Mineral Board be obligated to refund any consideration paid by the Lessor prior to such modification, cancellation, or abrogation, including, but not limited to, bonuses, rentals and royalties.

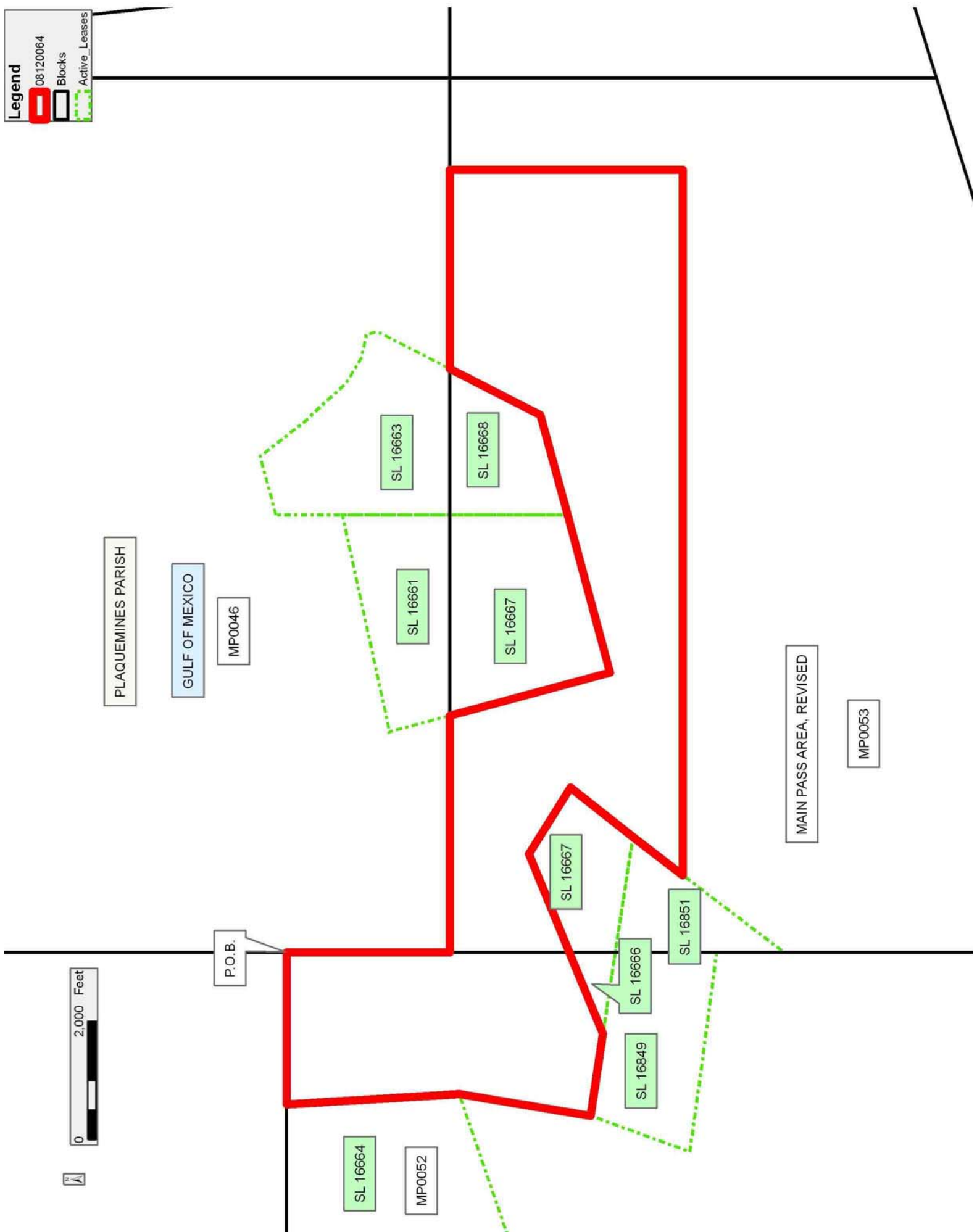
NOTE: This tract is located in an area designated by the Louisiana Legislature or the Wildlife and Fisheries Commission as a Public Oyster Seed Ground, Reservation, or area of Calcasieu or Sabine Lake. Proposed projects occurring in these areas will be evaluated on a case by case basis by Louisiana Department of Wildlife & Fisheries. Modifications to proposed project features including, but not limited to, access routes, well sites, flowlines, and appurtenant structures maybe required by the Louisiana Department of Wildlife and Fisheries. In addition, compensatory mitigation will be required to offset unavoidable habitat impacts.

Applicant: ROBERT A. SCHROEDER, INC.

Bidder	Cash Payment	Price/Acre	Rental	Oil	Gas	Other

Legend

-  08120064
-  Blocks
-  Active_Leases



TRACT 40628 - Portion of Block 52, Main Pass Area, Revised, Plaquemines Parish, Louisiana

All of the lands now or formerly constituting the beds and bottoms of all water bodies of every nature and description as to which title is vested in the State of Louisiana, together with all islands arising therein and other lands formed by accretion or by reliction, where allowed by law, excepting tax adjudicated lands, and not presently under mineral lease on December 10, 2008, situated in Plaquemines Parish, Louisiana, and more particularly described as follows: Beginning at the Southernmost Southwest corner of State Lease No. 16664 having Coordinates of X = 2,656,904.00 and Y = 261,271.20; thence South 71 degrees 05 minutes 36 seconds West approximately 3,754 feet to a point of intersection with the boundary of State Lease No. 195, as amended; thence along the boundary of said State Lease No. 195 the following: Northwesterly approximately 496 feet to a point and Westerly approximately 2,964 feet to a point of intersection with a North-South line having a Coordinate of X = 2,650,026.98; thence North approximately 3,007 feet along said line to a point on the South boundary of State Lease No. 19489 having Coordinates of X = 2,650,026.98 and Y = 263,350.00; thence along the boundary of said State Lease No. 19489 the following courses: East 3,374.02 feet to a point having Coordinates of X = 2,653,401.00 and Y = 263,350.00 and North 1,532.93 feet to a point on a Southern boundary of said State Lease No. 16664 having Coordinates of X = 2,653,401.00 and Y = 264,882.93; thence along the boundary of said State Lease No. 16664 the following courses: North 87 degrees 38 minutes 44 seconds East 3,309.79 feet to a point having Coordinates of X = 2,656,708.00 and Y = 265,018.90 and South 02 degrees 59 minutes 38 seconds East 3,752.82 feet to the point of beginning, **LESS AND EXCEPT** that portion, if any, of State Lease No. 195, as amended, which may lie within the above described tract, containing approximately **569 acres**, all as more particularly outlined on a plat on file in the Office of Mineral Resources, Department of Natural Resources. All bearings, distances and coordinates are based on Louisiana Coordinate System of 1927, (North or South Zone), where applicable.

NOTE: The above description of the Tract nominated for lease has been provided and corrected, where required, exclusively by the nomination party. Any mineral lease selected from this Tract and awarded by the Louisiana State Mineral Board shall be without warranty of any kind, either express, implied, or statutory, including, but not limited to, the implied warranties of merchantability and fitness for a particular purpose. Should the mineral lease awarded by the Louisiana State Mineral Board be subsequently modified, cancelled or abrogated due to the existence of conflicting leases, operating agreements, private claims or other future obligations or conditions which may affect all or any portion of the leased Tract, it shall not relieve the Lessee of the obligation to pay any bonus due thereon to the Louisiana State Mineral Board, nor shall the Louisiana State Mineral Board be obligated to refund any consideration paid by the Lessor prior to such modification, cancellation, or abrogation, including, but not limited to, bonuses, rentals and royalties.

NOTE: This tract is located in an area designated by the Louisiana Legislature or the Wildlife and Fisheries Commission as a Public Oyster Seed Ground, Reservation, or area of Calcasieu or Sabine Lake. Proposed projects occurring in these areas will be evaluated on a case by case basis by Louisiana Department of Wildlife & Fisheries. Modifications to proposed project features including, but not limited to, access routes, well sites, flowlines, and appurtenant structures maybe required by the Louisiana Department of Wildlife and Fisheries. In addition, compensatory mitigation will be required to offset unavoidable habitat impacts.

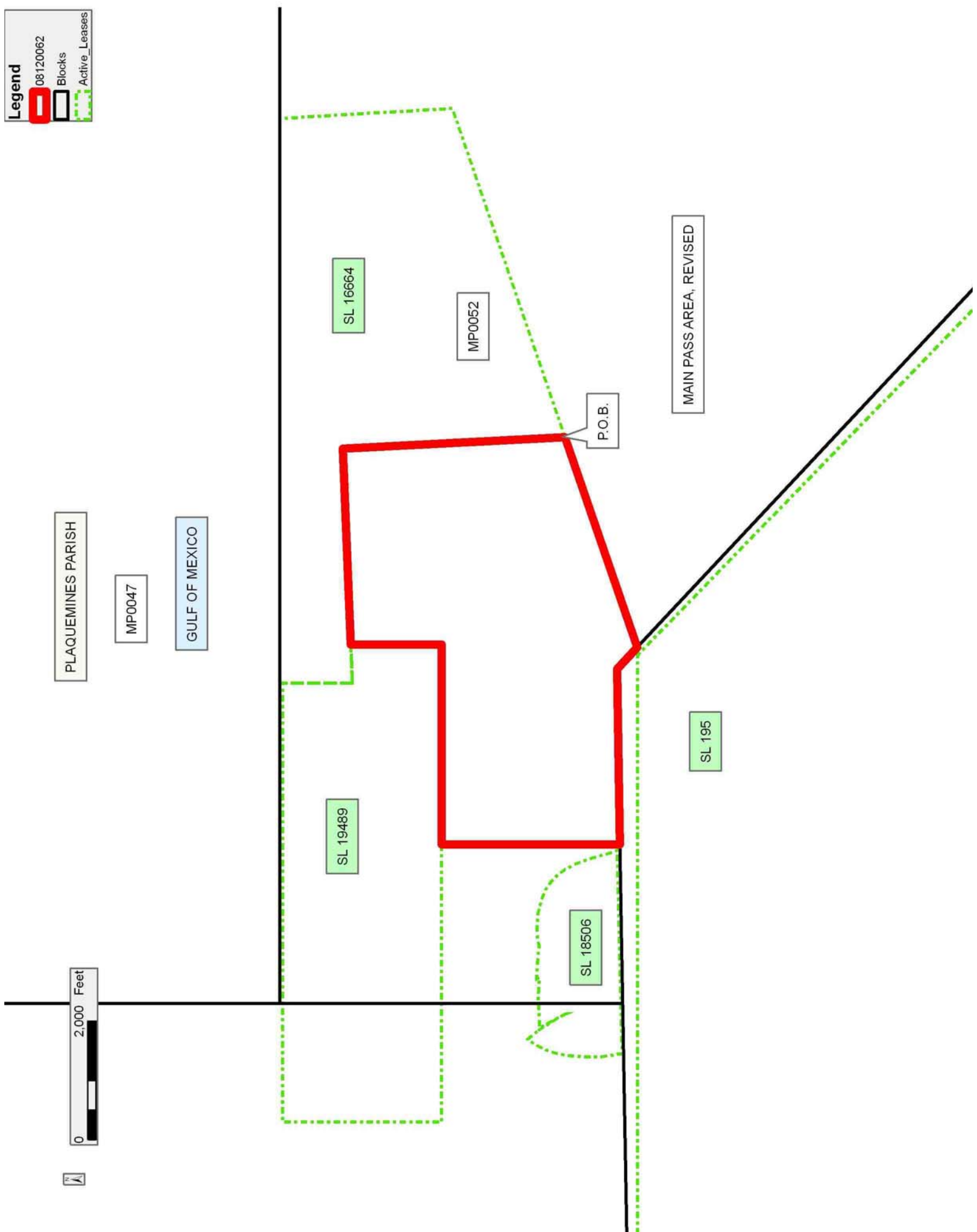
NOTE: The State of Louisiana does hereby reserve, and this lease shall be subject to, the imprescriptible right of surface use in the nature of a servitude in favor of the Department of Natural Resources, including its Offices and Commissions, for the sole purpose of implementing, constructing, servicing and maintaining approved coastal zone management and/or restoration projects. Utilization of any and all rights derived under this lease by the mineral lessee, its agents, successors or assigns, shall not interfere with nor hinder the reasonable surface use by the Department of Natural Resources, its Offices or Commissions, as herein above reserved.

Applicant: ROBERT A. SCHROEDER, INC.

Bidder	Cash Payment	Price/Acre	Rental	Oil	Gas	Other

Legend

- 08120062
- Blocks
- Active_Leases



TRACT 40629 - Terrebonne Parish, Louisiana

All of the lands now or formerly constituting the beds and bottoms of all water bodies of every nature and description as to which title is vested in the State of Louisiana, together with all islands arising therein and other lands formed by accretion or by reliction, where allowed by law, excepting tax adjudicated lands, and not presently under mineral lease on December 10, 2008, situated in Terrebonne Parish, Louisiana, and more particularly described as follows: Beginning at a point having Coordinates of X = 2,138,162.84 and Y = 270,620.00; thence East 10,287.16 feet to a point having Coordinates of X = 2,148,450.00 and Y = 270,620.00; thence South 12,000.00 feet to a point having Coordinates of X = 2,148,450.00 and Y = 258,620.00; thence West 10,287.16 feet to a point having Coordinates of X = 2,138,162.84 and Y = 258,620.00; thence North 809.40 feet to point on the Southern boundary of State Lease No. 12683, as amended, having Coordinates of X = 2,138,162.84 and Y = 259,429.40; thence along the boundary of said State Lease No. 12683 the following courses: North 77 degrees 15 minutes 52 seconds East 3.91 feet to a point having Coordinates of X = 2,138,166.66 and Y = 259,430.27; North 86 degrees 41 minutes 03 seconds East 241.00 feet to a point having Coordinates of X = 2,138,407.25 and Y = 259,444.20; North 75 degrees 10 minutes 00 seconds East 201.21 feet to a point having Coordinates of X = 2,138,601.76 and Y = 259,495.72; North 81 degrees 21 minutes 17 seconds East 104.45 feet to a point having Coordinates of X = 2,138,705.02 and Y = 259,511.42; North 85 degrees 00 minutes 36 seconds East 344.78 feet to a point having Coordinates of X = 2,139,048.49 and Y = 259,541.41; North 59 degrees 53 minutes 32 seconds East 105.96 feet to a point having Coordinates of X = 2,139,140.16 and Y = 259,594.56; South 89 degrees 46 minutes 50 seconds East 203.76 feet to a point having Coordinates of X = 2,139,343.92 and Y = 259,593.78; North 78 degrees 25 minutes 09 seconds East 300.03 feet to a point having Coordinates of X = 2,139,637.84 and Y = 259,654.01; North 75 degrees 45 minutes 19 seconds East 5.51 feet to a point having Coordinates of X = 2,139,643.18 and Y = 259,655.37; North 27 degrees 26 minutes 11 seconds East 1,588.28 feet to a point having Coordinates of X = 2,140,375.00 and Y = 261,065.00; Northwesterly along an arc to the left having a radius of 2,865.00 feet to a point having Coordinates of X = 2,139,215.05 and Y = 261,425.17; Southwesterly along an arc to the left having a radius 740.00 feet to a point having Coordinates of X = 2,138,904.24 and Y = 261,388.44; Southwesterly along an arc to the left having a radius of 320.00 feet to a point having Coordinates of X = 2,138,712.53 and Y = 261,158.73; South 07 degrees 11 minutes 58 seconds West 131.96 feet to a point having Coordinates of X = 2,138,696.00 and Y = 261,027.81 and Southwesterly along an arc to the right having a radius of 880.00 feet to a point having Coordinates of X = 2,138,162.84 and Y = 260,168.79; thence North 10,451.21 feet to the point of beginning, containing approximately **1,846 acres**, all as more particularly outlined on a plat on file in the Office of Mineral Resources, Department of Natural Resources. All bearings, distances and coordinates are based on Louisiana Coordinate System of 1927, (North or South Zone), where applicable.

NOTE: The above description of the Tract nominated for lease has been provided and corrected, where required, exclusively by the nomination party. Any mineral lease selected from this Tract and awarded by the Louisiana State Mineral Board shall be without warranty of any kind, either express, implied, or statutory, including, but not limited to, the implied warranties of merchantability and fitness for a particular purpose. Should the mineral lease awarded by the Louisiana State Mineral Board be subsequently modified, cancelled or abrogated due to the existence of conflicting leases, operating agreements, private claims or other future obligations or conditions which may affect all or any portion of the leased Tract, it shall not relieve the Lessee of the obligation to pay any bonus due thereon to the Louisiana State Mineral Board, nor shall the Louisiana State Mineral Board be obligated to refund any consideration paid by the Lessor prior to such modification, cancellation, or abrogation, including, but not limited to, bonuses, rentals and royalties.

NOTE: The State of Louisiana does hereby reserve, and this lease shall be subject to, the imprescriptible right of surface use in the nature of a servitude in favor of the Department of Natural Resources, including its Offices and Commissions, for the sole purpose of implementing, constructing, servicing and maintaining approved coastal zone management and/or restoration projects. Utilization of any and all rights derived under this lease by the mineral lessee, its agents, successors or assigns, shall not interfere with nor hinder the reasonable surface use by the Department of Natural Resources, its Offices or Commissions, as herein above reserved.

Applicant: AMEX RESOURCES, INC.

Bidder	Cash Payment	Price/Acre	Rental	Oil	Gas	Other

Legend

- 08120151
- Slowwaterbottoms_AREA
- Active_Leases
- DOQQ2004

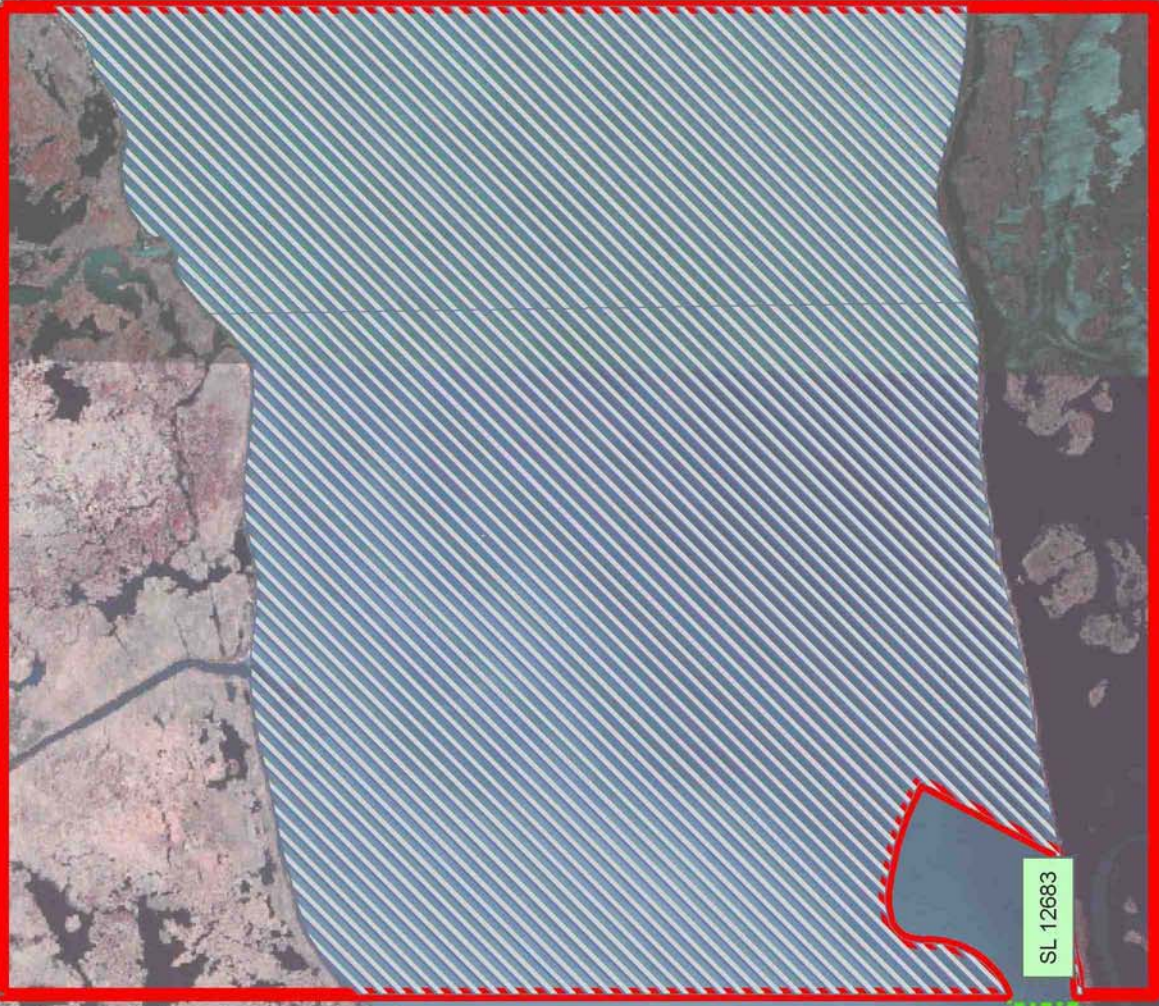
LAKE DE CADE

TERREBONNE PARISH

T19S - R15E

P.O.B.

0 2,000 Feet



SL 12683

T19S - R15E

TRACT 40630 - Terrebonne Parish, Louisiana

All of the lands now or formerly constituting the beds and bottoms of all water bodies of every nature and description as to which title is vested in the State of Louisiana, together with all islands arising therein and other lands formed by accretion or by reliction, where allowed by law, excepting tax adjudicated lands, and not presently under mineral lease on December 10, 2008, situated in Terrebonne Parish, Louisiana, and more particularly described as follows: Beginning at a point having Coordinates of X = 2,074,500.00 and Y = 270,900.00; thence East 18,000.00 feet to a point having Coordinates of X = 2,092,500.00 and Y = 270,900.00; thence South 10,900.00 feet to a point having Coordinates of X = 2,092,500.00 and Y = 260,000.00; thence West 18,000.00 feet to a point having Coordinates of X = 2,074,500.00 and Y = 260,000.00; thence North 10,900.00 feet to the point of beginning, containing approximately **495 acres**, all as more particularly outlined on a plat on file in the Office of Mineral Resources, Department of Natural Resources. All bearings, distances and coordinates are based on Louisiana Coordinate System of 1927, (North or South Zone), where applicable.

NOTE: The above description of the Tract nominated for lease has been provided and corrected, where required, exclusively by the nomination party. Any mineral lease selected from this Tract and awarded by the Louisiana State Mineral Board shall be without warranty of any kind, either express, implied, or statutory, including, but not limited to, the implied warranties of merchantability and fitness for a particular purpose. Should the mineral lease awarded by the Louisiana State Mineral Board be subsequently modified, cancelled or abrogated due to the existence of conflicting leases, operating agreements, private claims or other future obligations or conditions which may affect all or any portion of the leased Tract, it shall not relieve the Lessee of the obligation to pay any bonus due thereon to the Louisiana State Mineral Board, nor shall the Louisiana State Mineral Board be obligated to refund any consideration paid by the Lessor prior to such modification, cancellation, or abrogation, including, but not limited to, bonuses, rentals and royalties.

NOTE: The State of Louisiana does hereby reserve, and this lease shall be subject to, the imprescriptible right of surface use in the nature of a servitude in favor of the Department of Natural Resources, including its Offices and Commissions, for the sole purpose of implementing, constructing, servicing and maintaining approved coastal zone management and/or restoration projects. Utilization of any and all rights derived under this lease by the mineral lessee, its agents, successors or assigns, shall not interfere with nor hinder the reasonable surface use by the Department of Natural Resources, its Offices or Commissions, as herein above reserved.

Applicant: AMEX RESOURCES, INC.

Bidder	Cash Payment	Price/Acre	Rental	Oil	Gas	Other

TERREBONNE PARISH

T19S - R14E

T19S - R13E

CARENCRO BAYOU

CARENCRO LAKE

P.O.B.

