

TRACT 40611 - East Baton Rouge and West Baton Rouge Parishes, Louisiana

All of the lands now or formerly constituting the beds and bottoms of all water bodies of every nature and description as to which title is vested in the State of Louisiana, together with all islands arising therein and other lands formed by accretion or by reliction, where allowed by law, excepting tax adjudicated lands, and not presently under mineral lease on December 10, 2008, situated in East Baton Rouge and West Baton Rouge Parishes, Louisiana, and more particularly described as follows: Beginning at a point having Coordinates of X = 2,029,811.00 and Y = 692,457.18; thence South 11 degrees 32 minutes 00 seconds East 14,197.36 feet to a point having Coordinates of X = 2,032,649.59 and Y = 678,546.48; thence North 87 degrees 45 minutes 57 seconds West 8,633.21 feet to a point having Coordinates of X = 2,024,022.94 and Y = 678,883.05; thence North 30 degrees 50 minutes 00 seconds East 6,940.26 feet to the Southeast corner of State Lease No. 18805 having Coordinates of X = 2,027,580.13 and Y = 684,842.38; thence along the boundary of said State Lease No. 18805 the following courses: North 30 degrees 50 minutes 00 seconds East 1,216.79 feet to a corner having Coordinates of X = 2,028,203.78 and Y = 685,887.19; North 81 degrees 53 minutes 06 seconds West 286.08 feet to a corner having Coordinates of X = 2,027,920.56 and Y = 685,927.58; North 08 degrees 06 minutes 55 seconds East 1,289.01 feet to its Northeast corner having Coordinates of X = 2,028,102.53 and Y = 687,203.68; West 1,938.28 feet to its Northwest corner having Coordinates of X = 2,026,164.26 and Y = 687,203.68; thence West 3,368.38 feet to the Southeast corner of State Lease No. 14674, having Coordinates of X = 2,022,795.88 and Y = 687,203.69; thence North 08 degrees 06 minutes 54 seconds East 5,306.64 feet along the East boundary of said State Lease No. 14674 to its Northeast corner, also being the Southeast corner of State Lease No. 18804, having Coordinates of X = 2,023,544.97 and Y = 692,457.19; thence East 6,266.03 feet to the point of beginning, containing approximately **969 acres**, all as more particularly outlined on a plat on file in the Office of Mineral Resources, Department of Natural Resources. All bearings, distances and coordinates are based on Louisiana Coordinate System of 1927, (North or South Zone), where applicable.

NOTE: The above description of the Tract nominated for lease has been provided and corrected, where required, exclusively by the nomination party. Any mineral lease selected from this Tract and awarded by the Louisiana State Mineral Board shall be without warranty of any kind, either express, implied, or statutory, including, but not limited to, the implied warranties of merchantability and fitness for a particular purpose. Should the mineral lease awarded by the Louisiana State Mineral Board be subsequently modified, cancelled or abrogated due to the existence of conflicting leases, operating agreements, private claims or other future obligations or conditions which may affect all or any portion of the leased Tract, it shall not relieve the Lessee of the obligation to pay any bonus due thereon to the Louisiana State Mineral Board, nor shall the Louisiana State Mineral Board be obligated to refund any consideration paid by the Lessor prior to such modification, cancellation, or abrogation, including, but not limited to, bonuses, rentals and royalties.

Applicant: LARRY S. MINTER, INC.

Bidder	Cash Payment	Price/ Acre	Rental	Oil	Gas	Other

Legend

- 08120049
- Active_Leases
- Counties
- DOQQ2004

EAST BATON ROUGE PARISH

T5S - R1W

P.O.B.

SL 18805

WEST BATON ROUGE PARISH

MISSISSIPPI RIVER

T6S - R1W

SL 18804

SL 14674



TRACT 40612 - East Baton Rouge and West Baton Rouge Parishes, Louisiana

All of the lands now or formerly constituting the beds and bottoms of all water bodies of every nature and description as to which title is vested in the State of Louisiana, together with all islands arising therein and other lands formed by accretion or by reliction, where allowed by law, excepting tax adjudicated lands, and not presently under mineral lease on December 10, 2008, situated in East Baton Rouge and West Baton Rouge Parishes, Louisiana, and more particularly described as follows: Beginning at a point having Coordinates of X = 2,013,951.75 and Y = 679,275.97; thence South 87 degrees 45 minutes 57 seconds East 15,645.79 feet to a point having Coordinates of X = 2,029,585.65 and Y = 678,666.02; thence South 46 degrees 24 minutes 36 seconds West 7,294.33 feet to a point having Coordinates of X = 2,024,302.42 and Y = 673,636.64; thence South 02 degrees 13 minutes 05 seconds West 5,330.42 feet to a point having Coordinates of X = 2,024,096.12 and Y = 668,310.21; thence North 87 degrees 45 minutes 57 seconds West 10,561.18 feet to a point having Coordinates of X = 2,013,542.97 and Y = 668,721.93; thence North 02 degrees 13 minutes 05 seconds East 10,561.95 feet to the point of beginning, containing approximately **1,152 acres**, all as more particularly outlined on a plat on file in the Office of Mineral Resources, Department of Natural Resources. All bearings, distances and coordinates are based on Louisiana Coordinate System of 1927, (North or South Zone), where applicable.

NOTE: The above description of the Tract nominated for lease has been provided and corrected, where required, exclusively by the nomination party. Any mineral lease selected from this Tract and awarded by the Louisiana State Mineral Board shall be without warranty of any kind, either express, implied, or statutory, including, but not limited to, the implied warranties of merchantability and fitness for a particular purpose. Should the mineral lease awarded by the Louisiana State Mineral Board be subsequently modified, cancelled or abrogated due to the existence of conflicting leases, operating agreements, private claims or other future obligations or conditions which may affect all or any portion of the leased Tract, it shall not relieve the Lessee of the obligation to pay any bonus due thereon to the Louisiana State Mineral Board, nor shall the Louisiana State Mineral Board be obligated to refund any consideration paid by the Lessor prior to such modification, cancellation, or abrogation, including, but not limited to, bonuses, rentals and royalties.

Applicant: LARRY S. MINTER, INC.

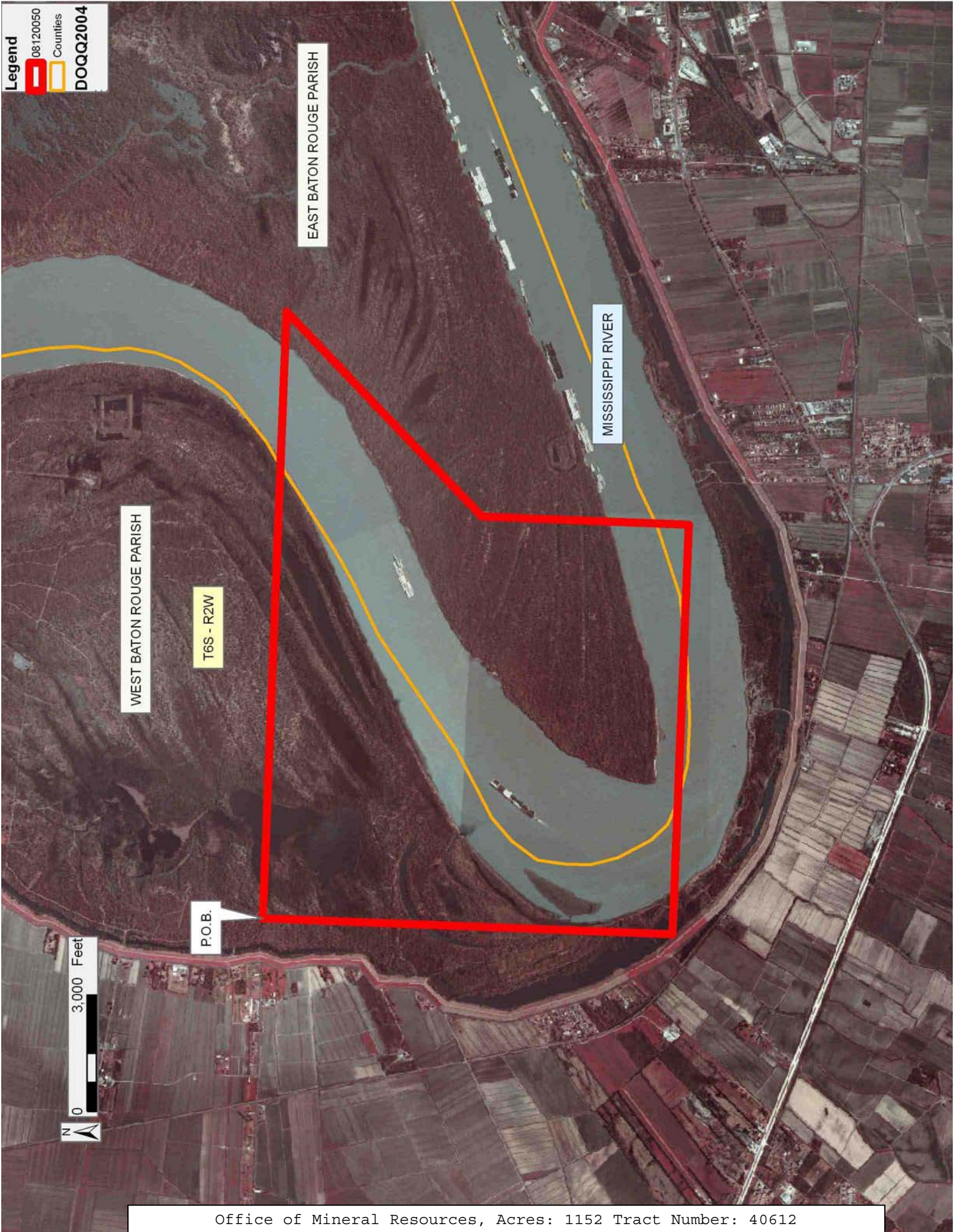
Bidder	Cash Payment	Price/ Acre	Rental	Oil	Gas	Other

Legend

08120050

Counties

DOQQ2004



EAST BATON ROUGE PARISH

MISSISSIPPI RIVER

WEST BATON ROUGE PARISH

T6S - R2W

P.O.B.

3,000 Feet

TRACT 40613 - Cameron Parish, Louisiana

All of the lands now or formerly constituting the beds and bottoms of all water bodies of every nature and description as to which title is vested in the State of Louisiana, together with all islands arising therein and other lands formed by accretion or by reliction, where allowed by law, excepting tax adjudicated lands, and not presently under mineral lease on December 10, 2008, situated in Cameron Parish, Louisiana, and more particularly described as follows: Beginning at a point on the Southern boundary of State Lease No. 19106, having Coordinates of X = 1,225,527.59 and Y = 485,511.52; thence East along the Southern boundary of State Lease No. 19106 5,484.62 feet to the Southeast corner of State Lease No. 19106, having Coordinates of X = 1,231,012.21 and Y = 485,511.52; thence East 2,500 feet to a point having Coordinates of X = 1,233,512.21 and Y = 485,511.52; thence South 12,661.52 feet to a point having Coordinates of X = 1,233,512.21 and Y = 472,850.00; thence West 7,984.62 feet to a point having Coordinates of X = 1,225,527.59 and Y = 472,850.00; thence North 12,661.52 feet to the point of beginning containing approximately **1,875 acres**, all as more particularly outlined on a plat on file in the Office of Mineral Resources, Department of Natural Resources. All bearings, distances and coordinates are based on Louisiana Coordinate System of 1927, (North or South Zone), where applicable.

NOTE: The above description of the Tract nominated for lease has been provided and corrected, where required, exclusively by the nomination party. Any mineral lease selected from this Tract and awarded by the Louisiana State Mineral Board shall be without warranty of any kind, either express, implied, or statutory, including, but not limited to, the implied warranties of merchantability and fitness for a particular purpose. Should the mineral lease awarded by the Louisiana State Mineral Board be subsequently modified, cancelled or abrogated due to the existence of conflicting leases, operating agreements, private claims or other future obligations or conditions which may affect all or any portion of the leased Tract, it shall not relieve the Lessee of the obligation to pay any bonus due thereon to the Louisiana State Mineral Board, nor shall the Louisiana State Mineral Board be obligated to refund any consideration paid by the Lessor prior to such modification, cancellation, or abrogation, including, but not limited to, bonuses, rentals and royalties.

NOTE: This tract is located in an area designated by the Louisiana Legislature or the Wildlife and Fisheries Commission as a Public Oyster Seed Ground, Reservation, or area of Calcasieu or Sabine Lake. Proposed projects occurring in these areas will be evaluated on a case by case basis by Louisiana Department of Wildlife & Fisheries. Modifications to proposed project features including, but not limited to, access routes, well sites, flowlines, and appurtenant structures maybe required by the Louisiana Department of Wildlife and Fisheries. In addition, compensatory mitigation will be required to offset unavoidable habitat impacts.

NOTE: The State of Louisiana does hereby reserve, and this lease shall be subject to, the imprescriptible right of surface use in the nature of a servitude in favor of the Department of Natural Resources, including its Offices and Commissions, for the sole purpose of implementing, constructing, servicing and maintaining approved coastal zone management and/or restoration projects. Utilization of any and all rights derived under this lease by the mineral lessee, its agents, successors or assigns, shall not interfere with nor hinder the reasonable surface use by the Department of Natural Resources, its Offices or Commissions, as herein above reserved.

Applicant: JEFF CHATELAIN

Bidder	Cash Payment	Price/ Acre	Rental	Oil	Gas	Other

Legend
08120058
Active_Leases
DOQQ2004

CAMERON PARISH

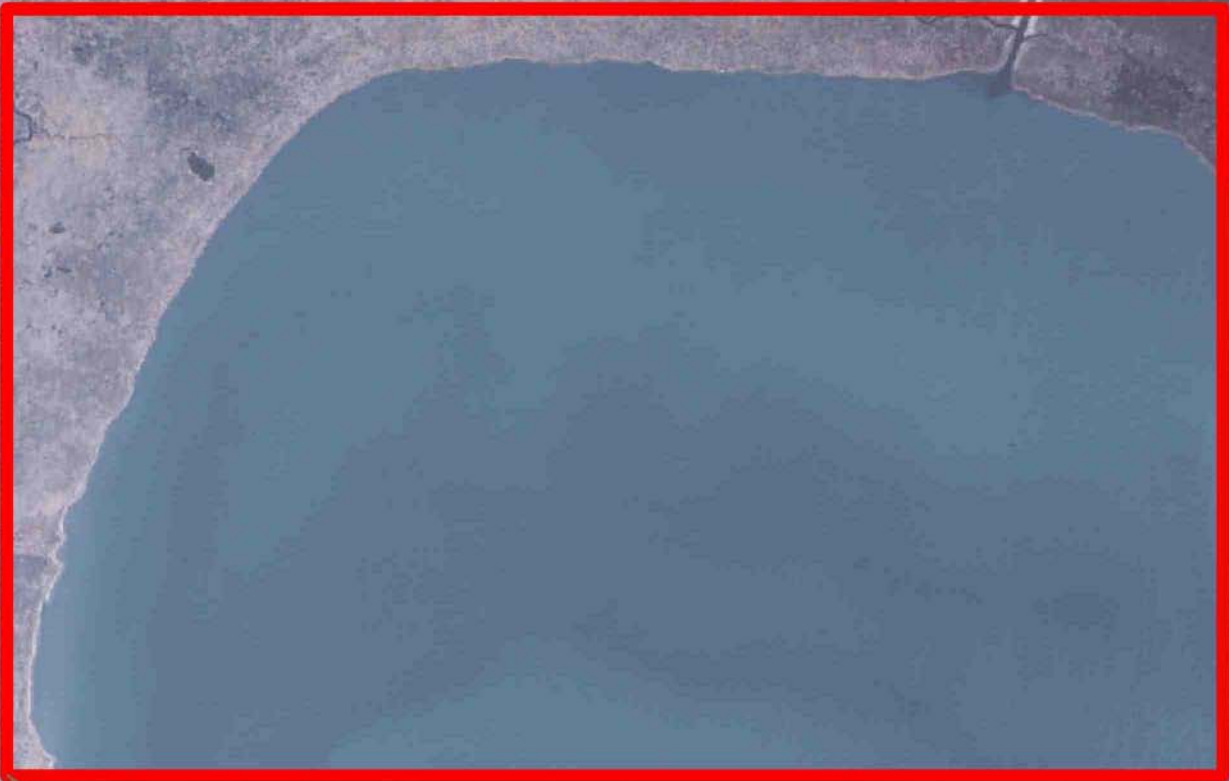
T13S - R14W

SL 19106

P.O.B.



SABINE LAKE



TRACT 40614 - Cameron Parish, Louisiana

All of the lands now or formerly constituting the beds and bottoms of all water bodies of every nature and description as to which title is vested in the State of Louisiana, together with all islands arising therein and other lands formed by accretion or by reliction, where allowed by law, excepting tax adjudicated lands, and not presently under mineral lease on December 10, 2008, situated in Cameron Parish, Louisiana, and more particularly described as follows: Beginning at a point having Coordinates of X = 1,464,132.96 and Y = 397,977.07; thence West 10,154.86 feet to a point having Coordinates of X = 1,453,978.10 and Y = 397,977.07; thence North 6,491.30 feet to a point having Coordinates of 1,453,978.10 and Y = 404,468.37; thence East 10,154.86 feet to a point having Coordinates of X = 1,464,132.96 and Y = 404,468.37; thence South 6,491.30 feet to the point of beginning, **LESS AND EXCEPT** all of State Lease No. 13893, as amended, State Lease No. 14357, as amended, and State Lease No. 19666 which lie within the above described tract, the boundaries of which being more fully described as follows: Commencing at the point of beginning of the above described tract having Coordinates of X = 1,464,132.96 and Y = 397,977.07; thence North 64 degrees 22 minutes 05 seconds West 5,138.65 feet to the Southeast corner of said State Lease No. 19666 having Coordinates of X = 1,459,500.00 and Y = 400,200.00; thence along the boundary of said State Lease No. 19666 the following courses: West 2,566.93 feet to a point having Coordinates of X = 1,456,933.07 and Y = 400,200.00; North 418.24 feet to a point having Coordinates of X = 1,456,933.07 and Y = 400,618.24; East 50.32 feet to a point having Coordinates of X = 1,456,983.39 and Y = 400,618.24 and North 154.40 feet to a point on the Southern boundary of State Lease No. 13893, as amended, having Coordinates of X = 1,456,983.39 and Y = 400,772.64; thence along the boundary of said State Lease No. 13893 the following courses: North 55 degrees 16 minutes 42 seconds West 135.89 feet to a point having Coordinates of X = 1,456,871.70 and Y = 400,850.04; North 57 degrees 02 minutes 18 seconds West 185.86 feet to a point having Coordinates of X = 1,456,715.76 and Y = 400,951.16; North 69 degrees 24 minutes 19 seconds West 153.80 feet to a point having Coordinates of X = 1,456,571.79 and Y = 401,005.26; North 74 degrees 46 minutes 42 seconds West 206.20 feet to a point having Coordinates of X = 1,456,372.82 and Y = 401,059.40; North 89 degrees 19 minutes 44 seconds West 181.01 feet to a point having Coordinates of X = 1,456,191.82 and Y = 401,061.52; South 76 degrees 22 minutes 37 seconds West 370.86 feet to a point having Coordinates of X = 1,455,831.39 and Y = 400,974.17; North 27 degrees 06 minutes 16 seconds West 650.24 feet to a point having Coordinates of X = 1,455,535.13 and Y = 401,553.00; North 12 degrees 32 minutes 04 seconds West 817.64 feet to a point having Coordinates of X = 1,455,357.68 and Y = 402,351.15 and South 85 degrees 04 minutes 39 seconds East 1,631.73 feet to a corner of said State Lease No. 19666 having Coordinates of X = 1,456,983.39 and Y = 402,211.13; thence along the boundary of said State Lease No. 19666 the following courses: North approximately 1,449 feet to a point on the Northern shoreline of Lower Mud Lake having a Coordinate of X = 1,456,983.39; thence Southeasterly along the meanders of said Northern shoreline of Lower Mud Lake to a point of

intersection with a North-South line having a Coordinate of X = 1,459,500.00; thence South approximately 2,861 feet along said line back to its Southeast corner, the above described tract containing approximately **763 acres**, all as more particularly outlined on a plat on file in the Office of Mineral Resources, Department of Natural Resources. All bearings, distances and coordinates are based on Louisiana Coordinate System of 1927, (North or South Zone), where applicable.

NOTE: The above description of the Tract nominated for lease has been provided and corrected, where required, exclusively by the nomination party. Any mineral lease selected from this Tract and awarded by the Louisiana State Mineral Board shall be without warranty of any kind, either express, implied, or statutory, including, but not limited to, the implied warranties of merchantability and fitness for a particular purpose. Should the mineral lease awarded by the Louisiana State Mineral Board be subsequently modified, cancelled or abrogated due to the existence of conflicting leases, operating agreements, private claims or other future obligations or conditions which may affect all or any portion of the leased Tract, it shall not relieve the Lessee of the obligation to pay any bonus due thereon to the Louisiana State Mineral Board, nor shall the Louisiana State Mineral Board be obligated to refund any consideration paid by the Lessor prior to such modification, cancellation, or abrogation, including, but not limited to, bonuses, rentals and royalties.

NOTE: The State of Louisiana does hereby reserve, and this lease shall be subject to, the imprescriptible right of surface use in the nature of a servitude in favor of the Department of Natural Resources, including its Offices and Commissions, for the sole purpose of implementing, constructing, servicing and maintaining approved coastal zone management and/or restoration projects. Utilization of any and all rights derived under this lease by the mineral lessee, its agents, successors or assigns, shall not interfere with nor hinder the reasonable surface use by the Department of Natural Resources, its Offices or Commissions, as herein above reserved.

Applicant: HILLIARD ACQUISITIONS X LLC

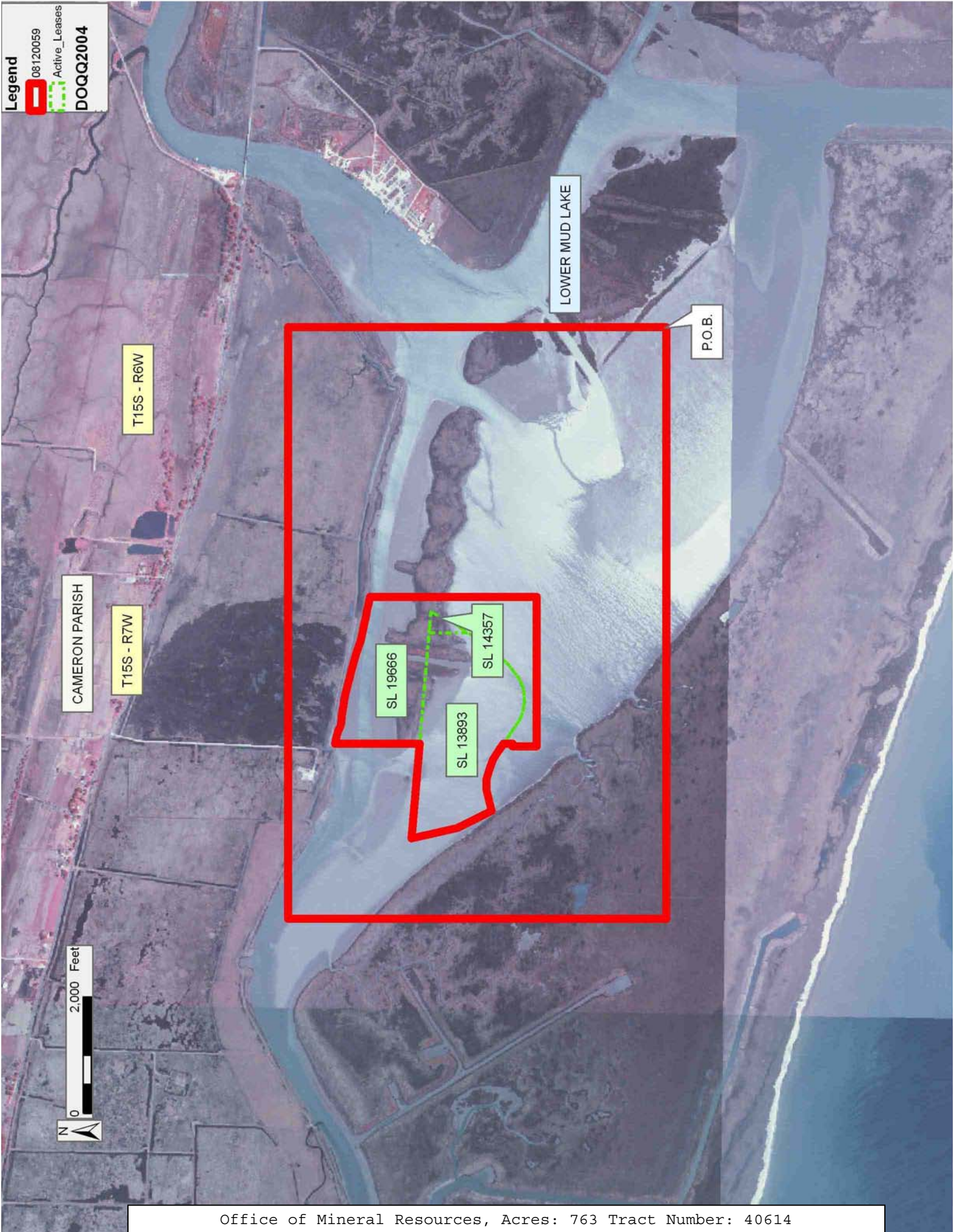
Bidder	Cash Payment	Price/ Acre	Rental	Oil	Gas	Other

Legend

08120059

Active_Leases

DOQQ2004



TRACT 40615 - Vermilion Parish, Louisiana

All of the lands now or formerly constituting the beds and bottoms of all water bodies of every nature and description as to which title is vested in the State of Louisiana, together with all islands arising therein and other lands formed by accretion or by reliction, where allowed by law, excepting tax adjudicated lands, and not presently under mineral lease on December 10, 2008, situated in Vermilion Parish, Louisiana, and more particularly described as follows: Beginning at a point having Coordinates of X = 1,662,140.22 and Y = 322,702.84, said point being a point on the Louisiana Coastline, as decreed by the Supreme Court of the United States, as determined by a Special Master appointed therein, in litigation styled *United States v. State of Louisiana et al No. 9 Original*, in 1975; thence along said Louisiana Coast Line the following courses: North 77 degrees 55 minutes 52 seconds West 2,229.50 feet to a point having Coordinates of X = 1,659,960 and Y = 323,169; and South 88 degrees 07 minutes 16 seconds West 24.70 feet to a point having Coordinates of X = 1,659,935.31 and Y = 323,168.19; South 88 degrees 07 minutes 54 seconds West 1,048.87 feet to a point having Coordinates of X = 1,658,887 and Y = 323,134; North 77 degrees 32 minutes 14 seconds West 1,881.33 feet to a point having Coordinates of X = 1,657,050 and Y = 323,540; North 78 degrees 29 minutes 23 seconds West 1,177.68 feet to a point having Coordinates of X = 1,655,896 and Y = 323,305; and North 79 degrees 44 minutes 54 seconds West 1,282.23 feet to a point having Coordinates of X = 1,654,634.24 and Y = 323,533.20; thence North 9,799.80 feet to a point having Coordinates of X = 1,654,634.24 and Y = 333,333.00; thence East 7,505.98 feet to a point having Coordinates of X = 1,662,140.22 and Y = 333,333.00; thence South 10,630.16 feet to the point of beginning, containing approximately **56 acres**, all as more particularly outlined on a plat on file in the Office of Mineral Resources, Department of Natural Resources. All bearings, distances and coordinates are based on Louisiana Coordinate System of 1927, (North or South Zone), where applicable.

NOTE: The above description of the Tract nominated for lease has been provided and corrected, where required, exclusively by the nomination party. Any mineral lease selected from this Tract and awarded by the Louisiana State Mineral Board shall be without warranty of any kind, either express, implied, or statutory, including, but not limited to, the implied warranties of merchantability and fitness for a particular purpose. Should the mineral lease awarded by the Louisiana State Mineral Board be subsequently modified, cancelled or abrogated due to the existence of conflicting leases, operating agreements, private claims or other future obligations or conditions which may affect all or any portion of the leased Tract, it shall not relieve the Lessee of the obligation to pay any bonus due thereon to the Louisiana State Mineral Board, nor shall the Louisiana State Mineral Board be obligated to refund any consideration paid by the Lessor prior to such modification, cancellation, or abrogation, including, but not limited to, bonuses, rentals and royalties.

NOTE: The State of Louisiana does hereby reserve, and this lease shall be subject to, the imprescriptible right of surface use in the nature of a servitude in favor of the Department of Natural Resources, including its Offices and Commissions, for the sole purpose of implementing, constructing, servicing and maintaining approved coastal zone management and/or restoration projects. Utilization of any and all rights derived under this lease by the mineral lessee, its agents, successors or assigns, shall not interfere with nor hinder the reasonable surface use by the Department of Natural Resources, its Offices or Commissions, as herein above reserved.

Applicant: ROBERT A. SCHROEDER, INC.

Bidder	Cash Payment	Price/ Acre	Rental	Oil	Gas	Other

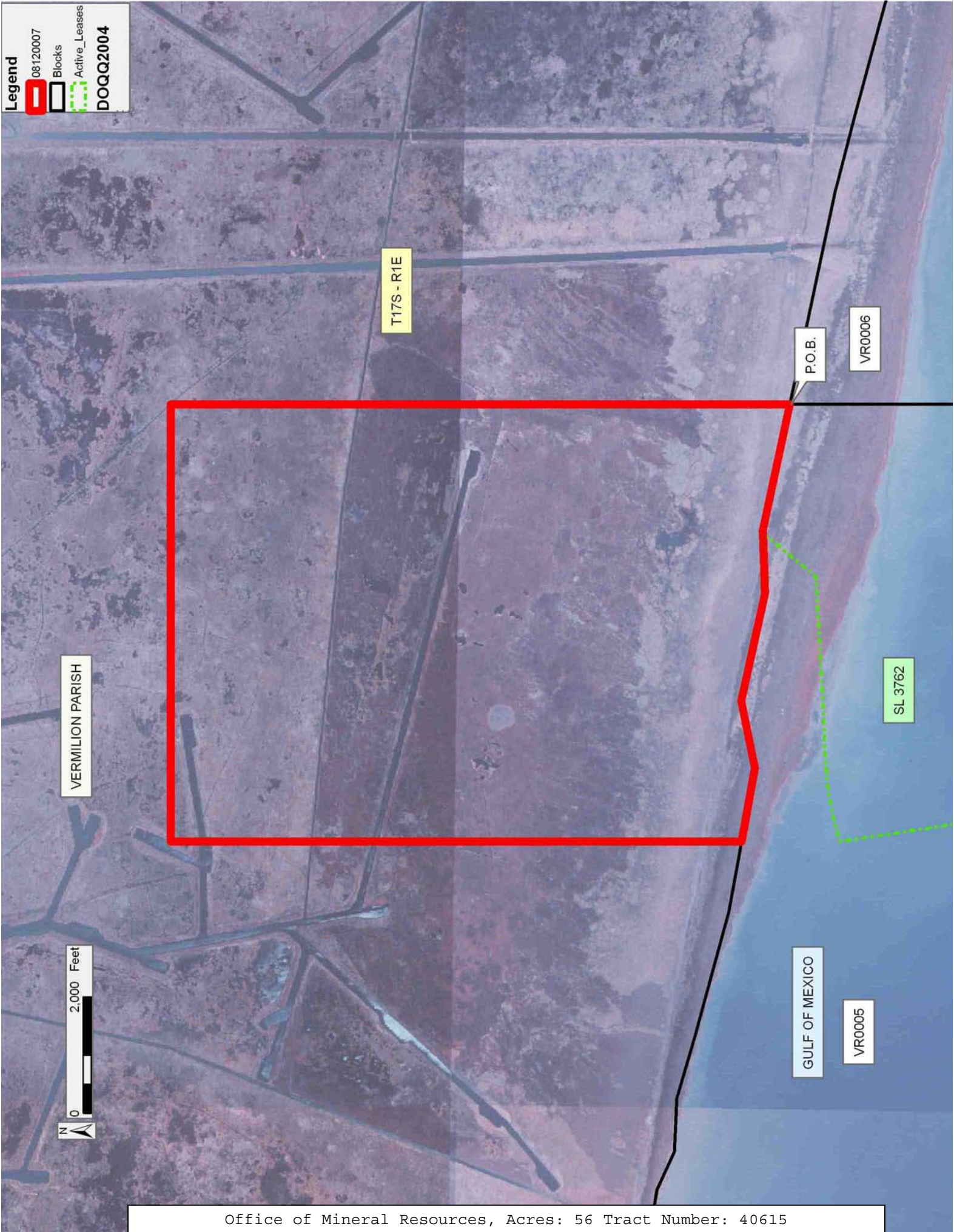
Legend

08120007

Blocks

Active_Leases

DOQQ2004



TRACT 40616 - Vermilion Parish, Louisiana

All of the lands now or formerly constituting the beds and bottoms of all water bodies of every nature and description as to which title is vested in the State of Louisiana, together with all islands arising therein and other lands formed by accretion or by reliction, where allowed by law, excepting tax adjudicated lands, and not presently under mineral lease on December 10, 2008, situated in Vermilion Parish, Louisiana, and more particularly described as follows: Beginning at a point having Coordinates of X = 1,622,140.22 and Y = 322,702.84, said point being a point on the Louisiana Coastline, as decreed by the Supreme Court of the United States, as determined by a Special Master appointed therein, in litigation styled *United States v. State of Louisiana et al No. 9 Original*, in 1975; thence North 10,630.16 feet to a point having Coordinates of X = 1,662,140.22 and Y = 333,333.00; thence East 11,068.54 feet to a point having Coordinates of X = 1,673,208.76 and Y = 333,333.00; thence South 13,544.42 feet to a point having Coordinates of X = 1,673,208.76 and Y = 319,788.58, said point being on said Louisiana Coast Line; thence along said Louisiana Coast Line the following courses: North 74 degrees 30 minutes 12 seconds West 2,273.41 feet to a point having Coordinates of X = 1,671,018 and Y = 320,396; North 71 degrees 27 minutes 13 seconds West 2,115.88 feet to a point having Coordinates of X = 1,669,012 and Y = 321,069; North 74 degrees 41 minutes 13 seconds West 1,991.71 feet to a point having Coordinates of X = 1,667,091 and Y = 321,595; North 75 degrees 41 minutes 08 seconds West 1,298.31 feet to a point having Coordinates of X = 1,665,833 and Y = 321,916; North 77 degrees 59 minutes 24 seconds West 2,599.91 feet to a point having Coordinates of X = 1,663,290 and Y = 322,457; and North 77 degrees 55 minutes 52 seconds West 1,175.77 feet to the point of beginning, containing approximately **158 acres**, all as more particularly outlined on a plat on file in the Office of Mineral Resources, Department of Natural Resources. All bearings, distances and coordinates are based on Louisiana Coordinate System of 1927, (North or South Zone), where applicable.

NOTE: The above description of the Tract nominated for lease has been provided and corrected, where required, exclusively by the nomination party. Any mineral lease selected from this Tract and awarded by the Louisiana State Mineral Board shall be without warranty of any kind, either express, implied, or statutory, including, but not limited to, the implied warranties of merchantability and fitness for a particular purpose. Should the mineral lease awarded by the Louisiana State Mineral Board be subsequently modified, cancelled or abrogated due to the existence of conflicting leases, operating agreements, private claims or other future obligations or conditions which may affect all or any portion of the leased Tract, it shall not relieve the Lessee of the obligation to pay any bonus due thereon to the Louisiana State Mineral Board, nor shall the Louisiana State Mineral Board be obligated to refund any consideration paid by the Lessor prior to such modification, cancellation, or abrogation, including, but not limited to, bonuses, rentals and royalties.

NOTE: The State of Louisiana does hereby reserve, and this lease shall be subject to, the imprescriptible right of surface use in the nature of a servitude in favor of the Department of Natural Resources, including its Offices and Commissions, for the sole purpose of implementing, constructing, servicing and maintaining approved coastal zone management and/or restoration projects. Utilization of any and all rights derived under this lease by the mineral lessee, its agents, successors or assigns, shall not interfere with nor hinder the reasonable surface use by the Department of Natural Resources, its Offices or Commissions, as herein above reserved.

Applicant: ROBERT A. SCHROEDER, INC.

Bidder	Cash Payment	Price/ Acre	Rental	Oil	Gas	Other

Legend

08120006

Blocks

Active_Leases

DOQQ2004

T17S - R1E

VERMILION PARISH

GULF OF MEXICO

VERMILION AREA, REVISED

VR0006

P.O.B.

SL 3762

VR0005



TRACT 40617 - Vermilion Parish, Louisiana

All of the lands now or formerly constituting the beds and bottoms of all water bodies of every nature and description as to which title is vested in the State of Louisiana, together with all islands arising therein and other lands formed by accretion or by reliction, where allowed by law, excepting tax adjudicated lands, and not presently under mineral lease on December 10, 2008, situated in Vermilion Parish, Louisiana, and more particularly described as follows: Beginning at a point having Coordinates of X = 1,632,624.12 and Y = 327,483.59, said point being on the Louisiana Coastline, as decreed by the Supreme Court of the United States, as determined by a Special Master appointed therein, in litigation styled *United States v. State of Louisiana et al No. 9 Original*, in 1975; thence along said Louisiana Coast Line the following courses: North 82 degrees 32 minutes 18 seconds West 3,506.82 feet to a point having Coordinates of X = 1,629,147 and Y = 327,939; and North 84 degrees 46 minutes 05 seconds West 473.70 feet to a point having Coordinates of X = 1,628,675.27 and Y = 327,982.20; thence North 5,350.80 feet to a point having Coordinates of X = 1,628,675.27 and Y = 333,333.00; thence East 11,250.42 feet to a point having Coordinates of X = 1,639,925.69 and Y = 333,333.00; thence South 6,842.93 feet to a point having Coordinates of X = 1,639,925.69 and Y = 326,490.07, said point being on said Louisiana Coast Line; Thence along said Louisiana Coast Line the following courses: North 80 degrees 13 minutes 07 seconds West 911.95 feet to a point having Coordinates of X = 1,639,027 and Y = 326,645; and North 82 degrees 32 minutes 18 seconds West 6,457.56 feet to the point of beginning, containing approximately **218 acres**, all as more particularly outlined on a plat on file in the Office of Mineral Resources, Department of Natural Resources. All bearings, distances and coordinates are based on Louisiana Coordinate System of 1927, (North or South Zone), where applicable.

NOTE: The above description of the Tract nominated for lease has been provided and corrected, where required, exclusively by the nomination party. Any mineral lease selected from this Tract and awarded by the Louisiana State Mineral Board shall be without warranty of any kind, either express, implied, or statutory, including, but not limited to, the implied warranties of merchantability and fitness for a particular purpose. Should the mineral lease awarded by the Louisiana State Mineral Board be subsequently modified, cancelled or abrogated due to the existence of conflicting leases, operating agreements, private claims or other future obligations or conditions which may affect all or any portion of the leased Tract, it shall not relieve the Lessee of the obligation to pay any bonus due thereon to the Louisiana State Mineral Board, nor shall the Louisiana State Mineral Board be obligated to refund any consideration paid by the Lessor prior to such modification, cancellation, or abrogation, including, but not limited to, bonuses, rentals and royalties.

NOTE: The State of Louisiana does hereby reserve, and this lease shall be subject to, the imprescriptible right of surface use in the nature of a servitude in favor of the Department of Natural Resources, including its

Offices and Commissions, for the sole purpose of implementing, constructing, servicing and maintaining approved coastal zone management and/or restoration projects. Utilization of any and all rights derived under this lease by the mineral lessee, its agents, successors or assigns, shall not interfere with nor hinder the reasonable surface use by the Department of Natural Resources, its Offices or Commissions, as herein above reserved.

Applicant: ROBERT A. SCHROEDER, INC.

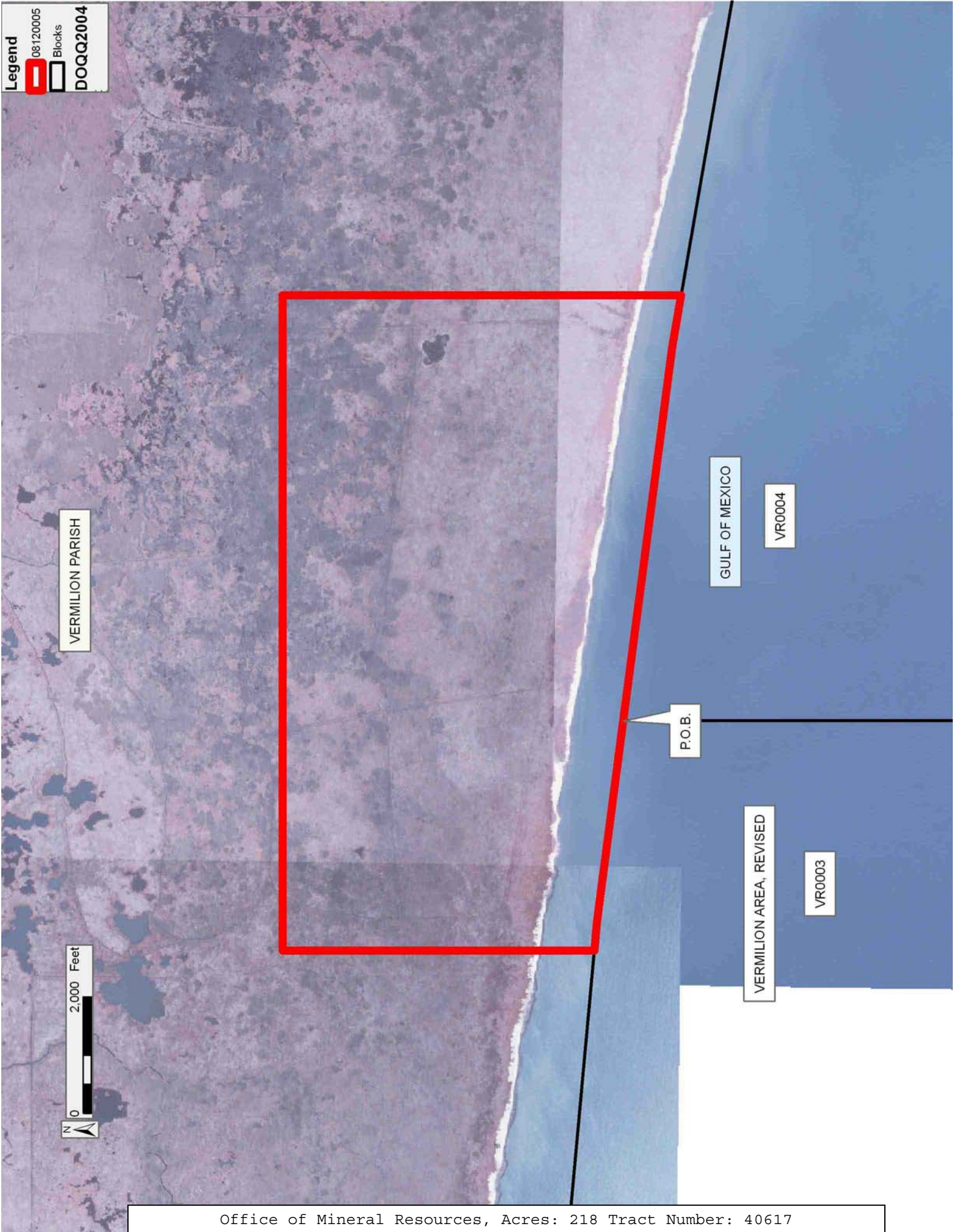
Bidder	Cash Payment	Price/ Acre	Rental	Oil	Gas	Other

Legend

 08120005

 Blocks

DOQQ2004



TRACT 40618 - Vermilion Parish, Louisiana

All of the lands now or formerly constituting the beds and bottoms of all water bodies of every nature and description as to which title is vested in the State of Louisiana, together with all islands arising therein and other lands formed by accretion or by reliction, where allowed by law, excepting tax adjudicated lands, and not presently under mineral lease on December 10, 2008, situated in Vermilion Parish, Louisiana, and more particularly described as follows: Beginning at a point having Coordinates of X = 1,647,382.17 and Y = 325,204.61, said point being the northeast corner of Block 4 and the northwest corner of Block 5, Vermilion Area, Revised, and being on the Louisiana Coastline, as decreed by the Supreme Court of the United States, as determined by a Special Master appointed therein, in litigation styled *United States v. State of Louisiana et al No. 9 Original*, in 1975; thence North 80 degrees 13 minutes 07 seconds West 7,566.47 feet along said Louisiana Coast Line to a point having Coordinates of X = 1,639,925.69 and Y = 326,490.07; thence North 6,842.93 feet to a point having Coordinates of X = 1,639,925.69 and Y = 333,333.00; thence East 14,708.55 feet to a point having Coordinates of X = 1,654,634.24 and Y = 333,333.00; thence South 9,799.80 feet to a point having Coordinates of X = 1,654,634.24 and Y = 323,533.20, said point being on said Louisiana Coast Line; thence along said Louisiana Coast Line the following courses: North 79 degrees 44 minutes 54 seconds West 1,223.78 feet to a point having Coordinates of X = 1,653,430 and Y = 323,751; North 74 degrees 45 minutes 31 seconds West 2,213.87 feet to a point having Coordinates of X = 1,651,294 and Y = 324,333; North 73 degrees 51 minutes 02 seconds West 1,118.12 feet to a point having Coordinates of X = 1,650,220 and Y = 324,644; North 87 degrees 29 minutes 19 seconds West 912.88 feet to a point having Coordinates of X = 1,649,308 and Y = 324,684; North 65 degrees 13 minutes 09 seconds West 718.13 feet to a point having Coordinates of X = 1,648,656 and Y = 324,985; and North 80 degrees 13 minutes 06 seconds West 1,292.62 feet to the point of beginning, containing approximately **126 acres**, all as more particularly outlined on a plat on file in the Office of Mineral Resources, Department of Natural Resources. All bearings, distances and coordinates are based on Louisiana Coordinate System of 1927, (North or South Zone), where applicable.

NOTE: The above description of the Tract nominated for lease has been provided and corrected, where required, exclusively by the nomination party. Any mineral lease selected from this Tract and awarded by the Louisiana State Mineral Board shall be without warranty of any kind, either express, implied, or statutory, including, but not limited to, the implied warranties of merchantability and fitness for a particular purpose. Should the mineral lease awarded by the Louisiana State Mineral Board be subsequently modified, cancelled or abrogated due to the existence of conflicting leases, operating agreements, private claims or other future obligations or conditions which may affect all or any portion of the leased Tract, it shall not relieve the Lessee of the obligation to pay any bonus due thereon to the Louisiana State Mineral Board, nor shall

the Louisiana State Mineral Board be obligated to refund any consideration paid by the Lessor prior to such modification, cancellation, or abrogation, including, but not limited to, bonuses, rentals and royalties.

NOTE: The State of Louisiana does hereby reserve, and this lease shall be subject to, the imprescriptible right of surface use in the nature of a servitude in favor of the Department of Natural Resources, including its Offices and Commissions, for the sole purpose of implementing, constructing, servicing and maintaining approved coastal zone management and/or restoration projects. Utilization of any and all rights derived under this lease by the mineral lessee, its agents, successors or assigns, shall not interfere with nor hinder the reasonable surface use by the Department of Natural Resources, its Offices or Commissions, as herein above reserved.

Applicant: ROBERT A. SCHROEDER, INC.

Bidder	Cash Payment	Price/ Acre	Rental	Oil	Gas	Other

Legend

08120004

Blocks

DOQQ2004

VERMILION PARISH



P.O.B.

VR0005

VERMILION AREA, REVISED

GULF OF MEXICO

VR0004

TRACT 40619 - Plaquemines Parish, Louisiana

All of the lands now or formerly constituting the beds and bottoms of all water bodies of every nature and description as to which title is vested in the State of Louisiana, together with all islands arising therein and other lands formed by accretion or by reliction, where allowed by law, excepting tax adjudicated lands, and not presently under mineral lease on December 10, 2008, situated in Plaquemines Parish, Louisiana, and more particularly described as follows: Beginning at a point having Coordinates of X = 2,464,163.00 and Y = 294,595.60; thence East 7,587.01 feet to the Northwest corner of State Lease No. 12499 having Coordinates of X = 2,471,750.01 and Y = 294,595.60; thence South 1,748.67 feet along the West line of said State Lease No. 12499 to its Southwest corner, said corner also being the Northwest corner of State Lease No. 12036, having Coordinates of X = 2,471,750.01 and Y = 292,846.93; thence along the boundary of said State Lease No. 12036 the following courses: South 51 degrees 10 minutes 49 seconds West 2,867.50 feet to a point having Coordinates of X = 2,469,515.87 and Y = 291,049.37 and South 55 degrees 21 minutes 12 seconds East 6,660.82 feet to a point having Coordinates of X = 2,474,995.55 and Y = 287,262.60; thence South 4,201.52 feet to the Northeast corner of State Lease No. 19336 having Coordinates of X = 2,474,995.55 and Y = 283,061.08; thence West 1,448.11 feet along the North line of said State Lease No. 19336 to a point on the East line of State Lease No. 17378, as amended, having Coordinates of X = 2,473,547.44 and Y = 283,061.08; thence along the boundary of State Lease No. 17378, as amended, the following courses: North 2,120.73 feet to a point having Coordinates of X = 2,473,547.44 and Y = 285,181.81; North 67 degrees 57 minutes 57 seconds West 1,380.33 feet to a point having Coordinates of X = 2,472,267.93 and Y = 285,699.65; and West 3,867.93 feet to its Northwest corner, said corner also being the Northeast corner of State Lease No. 17376, as amended, having Coordinates of X = 2,468,400.00 and Y = 285,699.65; thence West 3,027.84 feet along the North line of said State Lease No. 17376, as amended, to its Northwest corner having Coordinates of X = 2,465,372.16 and Y = 285,699.65; thence North 267.45 feet to a point on the Southern boundary of State Lease No. 15248 having Coordinates of X = 2,465,372.16 and Y = 285,967.11; thence along the boundary of said State Lease No. 15248 the following courses: North 69 degrees 43 minutes 47 seconds East 362.93 feet to a point having Coordinates of X = 2,465,712.62 and Y = 286,092.85; North 65 degrees 18 minutes 59 seconds East 524.32 feet to a point having Coordinates of X = 2,466,189.03 and Y = 286,311.80; North 55 degrees 57 minutes 13 seconds East 572.02 feet to a point having Coordinates of X = 2,466,662.99 and Y = 286,632.06; North 53 degrees 04 minutes 09 seconds East 300.00 feet to a point having Coordinates of X = 2,466,902.80 and Y = 286,812.31; North 51 degrees 03 minutes 00 seconds East 300.00 feet to a point having Coordinates of X = 2,467,136.11 and Y = 287,000.90; North 52 degrees 12 minutes 54 seconds East 300.00 feet to a point having Coordinates of X = 2,467,373.20 and Y = 287,184.73; North 60 degrees 09 minutes 15 seconds East 300.00 feet to a point having Coordinates of X = 2,467,633.42 and Y = 287,334.02; North 68 degrees 06 minutes 25 seconds East 300.00 feet to a point having Coordinates of X =

2,467,911.78 and Y = 287,445.88; North 76 degrees 03 minutes 34 seconds East 300.00 feet to its Northeast corner, said corner also being a point on the Southern boundary of State Lease No. 9572, as amended, having Coordinates of X = 2,468,202.95 and Y = 287,518.15; thence along the boundary of said State Lease No. 9572, as amended, the following courses: North 89 degrees 45 minutes 09 seconds East 293.25 feet to a point having Coordinates of X = 2,468,496.18 and Y = 287,519.42; South 84 degrees 22 minutes 02 seconds East 369.22 feet to a point having Coordinates of X = 2,468,863.62 and Y = 287,483.18; South 77 degrees 11 minutes 13 seconds East 288.23 feet to a point having Coordinates of X = 2,469,144.67 and Y = 287,419.26; South 78 degrees 19 minutes 57 seconds East 525.58 feet to a point having Coordinates of X = 2,469,659.39 and Y = 287,312.97; South 83 degrees 18 minutes 03 seconds East 517.33 feet to a point having Coordinates of X = 2,470,173.19 and Y = 287,252.62; South 88 degrees 20 minutes 31 seconds East 483.12 feet to a point having Coordinates of X = 2,470,656.11 and Y = 287,238.64; North 88 degrees 43 minutes 47 seconds East 595.95 feet to a point having Coordinates of X = 2,471,251.91 and Y = 287,251.85; North 86 degrees 02 minutes 26 seconds East 717.71 feet to a point having Coordinates of X = 2,471,967.91 and Y = 287,301.41; North 24 degrees 05 minutes 22 seconds West 174.15 feet to a point having Coordinates of X = 2,471,896.83 and Y = 287,460.39; North 39 degrees 59 minutes 31 seconds West 218.13 feet to a point having Coordinates of X = 2,471,756.64 and Y = 287,627.51; North 51 degrees 18 minutes 29 seconds West 277.70 feet to a point having Coordinates of X = 2,471,539.89 and Y = 287,801.11; North 65 degrees 22 minutes 17 seconds West 109.95 feet to its Northeast corner, said corner also being the Southeast corner of State Lease No. 9570, as amended, having Coordinates of X = 2,471,439.94 and Y = 287,846.93; thence along the boundary of said State Lease No. 9570, as amended, the following courses: North 65 degrees 22 minutes 32 seconds West 188.98 feet to a point having Coordinates of X = 2,471,268.15 and Y = 287,925.67; North 89 degrees 16 minutes 28 seconds West 1,018.41 feet to a point having Coordinates of X = 2,470,249.82 and Y = 287,938.57; North 79 degrees 28 minutes 19 seconds West 256.30 feet to a point having Coordinates of X = 2,469,997.84 and Y = 287,985.40; North 72 degrees 46 minutes 10 seconds West 317.74 feet to a point having Coordinates of X = 2,469,694.36 and Y = 288,079.52; North 66 degrees 03 minutes 24 seconds West 337.70 feet to a point having Coordinates of X = 2,469,385.72 and Y = 288,216.57; North 66 degrees 20 minutes 16 seconds West 370.63 feet to a point having Coordinates of X = 2,469,046.25 and Y = 288,365.32; North 70 degrees 36 minutes 20 seconds West 261.00 feet to a point having Coordinates of X = 2,468,800.06 and Y = 288,451.99; North 75 degrees 44 minutes 12 seconds West 223.40 feet to a point having Coordinates of X = 2,468,583.55 and Y = 288,507.03; North 79 degrees 26 minutes 40 seconds West 369.29 feet to a point having Coordinates of X = 2,468,220.51 and Y = 288,574.68; North 83 degrees 59 minutes 38 seconds West 221.73 feet to a point having Coordinates of X = 2,468,000.00 and Y = 288,597.88; North 899.05 feet to the Northeast corner of State Lease No. 9571, as amended, having Coordinates of X = 2,468,000.00 and Y = 289,496.93; thence West 1,864.91 feet along the North line of said State Lease No. 9571, as

amended, to the Southeast corner of State Lease No. 8512, as amended, having Coordinates of X = 2,466,135.09 and Y = 289,496.93; thence along the boundary of said State Lease No. 8512 the following courses: North 26 degrees 08 minutes 33 seconds East 1,756.29 feet to a point having Coordinates of X = 2,466,908.92 and Y = 291,073.57; North 57 degrees 24 minutes 38 seconds West 1,240.13 feet to a point having Coordinates of X = 2,465,864.05 and Y = 291,741.51; North 58 degrees 47 minutes 12 seconds West 1,005.70 feet to a point having Coordinates of X = 2,465,003.93 and Y = 292,262.69; North 60 degrees 38 minutes 44 seconds West 579.06 feet to a point having Coordinates of X = 2,464,499.22 and Y = 292,546.55; North 65 degrees 05 minutes 28 seconds West 314.12 feet to a point having Coordinates of X = 2,464,214.32 and Y = 292,678.85; and North 64 degrees 16 minutes 21 seconds West 56.97 feet to a point having Coordinates of X = 2,464,163.00 and Y = 292,703.58; thence North 1,892.02 feet to the Point of Beginning, containing approximately **1026 acres**, all as more particularly outlined on a plat on file in the Office of Mineral Resources, Department of Natural Resources. All bearings, distances and coordinates are based on Louisiana Coordinate System of 1927, (North or South Zone), where applicable.

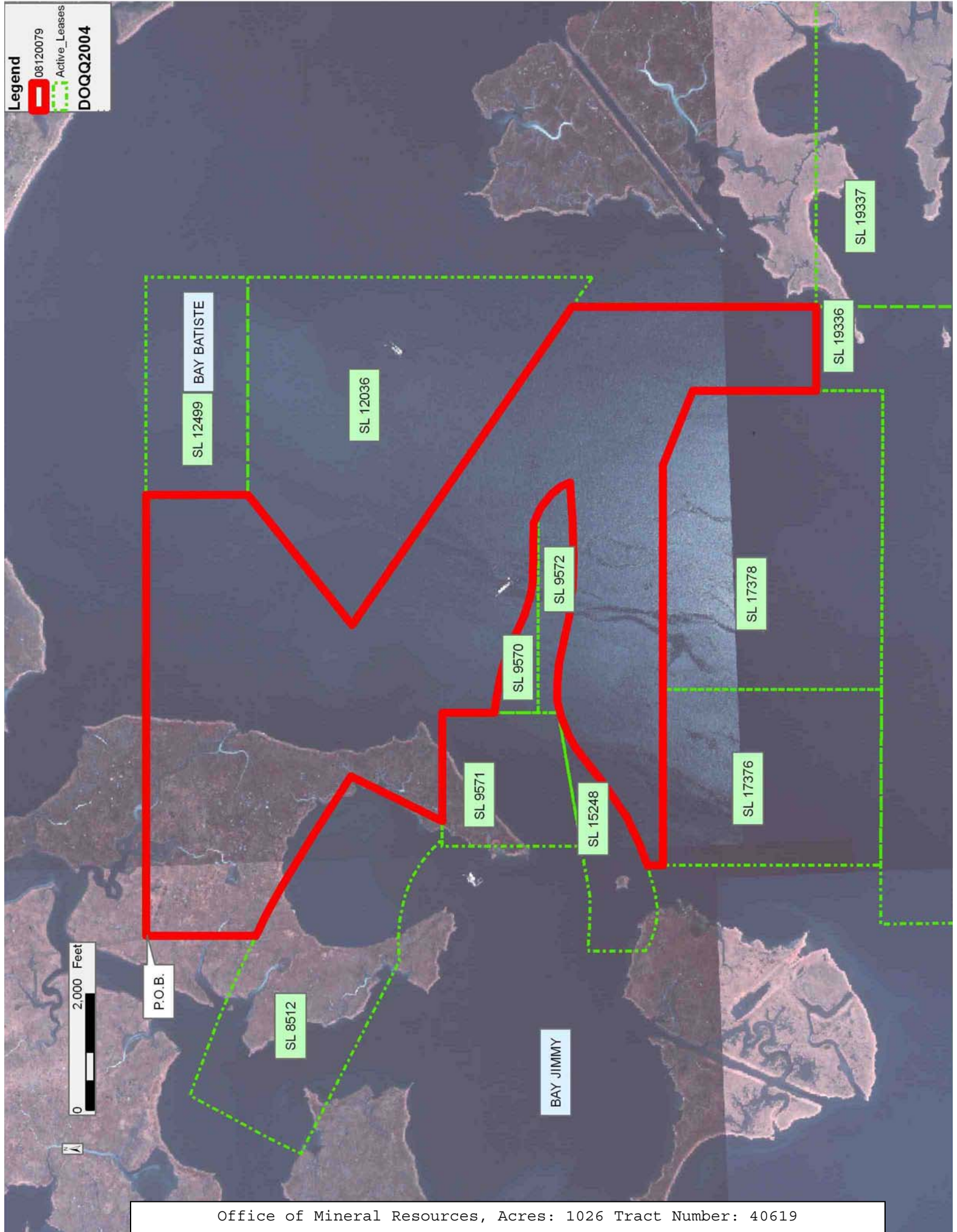
NOTE: The above description of the Tract nominated for lease has been provided and corrected, where required, exclusively by the nomination party. Any mineral lease selected from this Tract and awarded by the Louisiana State Mineral Board shall be without warranty of any kind, either express, implied, or statutory, including, but not limited to, the implied warranties of merchantability and fitness for a particular purpose. Should the mineral lease awarded by the Louisiana State Mineral Board be subsequently modified, cancelled or abrogated due to the existence of conflicting leases, operating agreements, private claims or other future obligations or conditions which may affect all or any portion of the leased Tract, it shall not relieve the Lessee of the obligation to pay any bonus due thereon to the Louisiana State Mineral Board, nor shall the Louisiana State Mineral Board be obligated to refund any consideration paid by the Lessor prior to such modification, cancellation, or abrogation, including, but not limited to, bonuses, rentals and royalties.

NOTE: The State of Louisiana does hereby reserve, and this lease shall be subject to, the imprescriptible right of surface use in the nature of a servitude in favor of the Department of Natural Resources, including its Offices and Commissions, for the sole purpose of implementing, constructing, servicing and maintaining approved coastal zone management and/or restoration projects. Utilization of any and all rights derived under this lease by the mineral lessee, its agents, successors or assigns, shall not interfere with nor hinder the reasonable surface use by the Department of Natural Resources, its Offices or Commissions, as herein above reserved.

Applicant: QUALITY PRODUCTION SERVICES

Bidder	Cash Payment	Price/ Acre	Rental	Oil	Gas	Other

Legend
08120079
Active_Leases
DOQQ2004



TRACT 40620 - Plaquemines Parish, Louisiana

All of the lands now or formerly constituting the beds and bottoms of all water bodies of every nature and description as to which title is vested in the State of Louisiana, together with all islands arising therein and other lands formed by accretion or by reliction, where allowed by law, excepting tax adjudicated lands, and not presently under mineral lease on December 10, 2008, situated in Plaquemines Parish, Louisiana, and more particularly described as follows: Beginning at a point having Coordinates of X = 2,485,570.43 and Y = 294,595.60; thence South 11,534.52 feet to the Northeast corner of State Lease No. 19337, said corner also being the Northwest corner of State Lease No. 2104, having Coordinates of X = 2,485,570.43 and Y = 283,061.08; thence South 10,574.88 feet along the North line of said State Lease No. 19337 to its Northwest corner, said corner also being the Northeast corner of State Lease No. 19336 having Coordinates of X = 2,474,995.55 and Y = 283,061.08; thence North 4,201.52 feet to a point on the Southern boundary line of State Lease No. 12036 having Coordinates of X = 2,474,995.55 and Y = 287,262.60; thence along the boundary of said State Lease No. 12036 the following courses: South 55 degrees 21 minutes 12 seconds East 613.18 feet to a point having Coordinates of X = 2,475,500.00 and Y = 286,914.00 and North 5,932.93 feet to its Northeast corner, said corner also being the Southeast corner of State Lease No. 12499, having Coordinates of X = 2,475,500.00 and Y = 292,846.93; thence North 1,748.67 feet along the East line of said State Lease No. 12499 to its Northeast corner having Coordinates of X = 2,475,500.00 and Y = 294,595.60; thence East 10,070.43 to the Point of Beginning, containing approximately **1,499 acres**, all as more particularly outlined on a plat on file in the Office of Mineral Resources, Department of Natural Resources. All bearings, distances and coordinates are based on Louisiana Coordinate System of 1927, (North or South Zone), where applicable.

NOTE: The above description of the Tract nominated for lease has been provided and corrected, where required, exclusively by the nomination party. Any mineral lease selected from this Tract and awarded by the Louisiana State Mineral Board shall be without warranty of any kind, either express, implied, or statutory, including, but not limited to, the implied warranties of merchantability and fitness for a particular purpose. Should the mineral lease awarded by the Louisiana State Mineral Board be subsequently modified, cancelled or abrogated due to the existence of conflicting leases, operating agreements, private claims or other future obligations or conditions which may affect all or any portion of the leased Tract, it shall not relieve the Lessee of the obligation to pay any bonus due thereon to the Louisiana State Mineral Board, nor shall the Louisiana State Mineral Board be obligated to refund any consideration paid by the Lessor prior to such modification, cancellation, or abrogation, including, but not limited to, bonuses, rentals and royalties.

NOTE: The State of Louisiana does hereby reserve, and this lease shall be subject to, the imprescriptible right of surface use in the nature of a

servitude in favor of the Department of Natural Resources, including its Offices and Commissions, for the sole purpose of implementing, constructing, servicing and maintaining approved coastal zone management and/or restoration projects. Utilization of any and all rights derived under this lease by the mineral lessee, its agents, successors or assigns, shall not interfere with nor hinder the reasonable surface use by the Department of Natural Resources, its Offices or Commissions, as herein above reserved.

Applicant: QUALITY PRODUCTION SERVICES

Bidder	Cash Payment	Price/ Acre	Rental	Oil	Gas	Other

Legend

08120080

Active_Leases

DOQQ2004

