

TRACT 40600 - Portion of Blocks 5, and 6, Vermilion Area, Revised, Vermilion Parish, Louisiana

The beds and bottoms of all water bodies belonging to the State of Louisiana located in Blocks 5, and 6, Vermilion Area, Revised, together with any present lands formed by accretion to the shoreline or islands formed therein, located in Vermilion Parish, Louisiana, owned by and not presently under mineral lease as of December 10, 2008, from the State of Louisiana, the geographical area of which is more fully described as follows: Beginning at a point having Coordinates of X = 1,662,140.22 and Y = 311,024.77, said point being the southwest corner of Block 6, Vermilion Area, Revised; thence North 985.05 feet along the West line of said Block 6, Vermilion Area, Revised, to a point having Coordinates of X = 1,662,140.22 and Y = 311,982.82; thence North 541.95 feet along the said West line of said Block 6, Vermilion Area, Revised, to a point having Coordinates of X = 1,662,140.22 and Y = 312,524.77, said point being the southwest corner of Louisiana State Lease No. 18730; thence along the southern, eastern, and northern boundaries of said Louisiana State Lease No. 18730 the following courses: East 2,000.00 feet to a point having Coordinates of X = 1,664,140.22 and Y = 312,524.77, said point being the southeast corner of said Louisiana State Lease No. 18730; North 4,500.00 feet to a point having Coordinates of X = 1,664,140.22 and Y = 317,024.77, said point being the northeast corner of said Louisiana State Lease No. 18730; West 2,000.00 feet to a point having Coordinates of X = 1,662,140.22 and Y = 317,024.77, said point being the northwest corner of said Louisiana State Lease No. 18730, said point also being a point on said West line of said Block 6, Vermilion Area, Revised; thence North 558.05 feet along said West line of said Block 6, Vermilion Area, Revised, to a point having Coordinates of X = 1,662,140.22 and Y = 317,582.82, said point being the southeast corner of Block 5, Vermilion Area, Revised; thence West 455.46 feet along the South line of said Block 5, Vermilion Area, Revised, to a point having Coordinates of X = 1,661,684.76 and Y = 317,582.82, said point being a southeast corner of Louisiana State Lease No. 3762, as amended; thence along a southeastern boundary of said Louisiana State Lease No. 3762 the following courses: North 20 degrees 42 minutes 29 seconds East 371.16 feet to a point having Coordinates of X = 1,661,816.00 and Y = 317,930.00; and North 68 degrees 28 minutes 34 seconds East 348.52 feet to a point having Coordinates of X = 1,662,140.22 and Y = 318,057.87, said point being a southeast corner of said Louisiana State Lease No. 3762, said point also being on said West line of said Block 6, Vermilion Area, Revised; thence North 4,644.97 feet along said West line of said Block 6, Vermilion Area, Revised, to a point having Coordinates of X = 1,662,140.22 and Y = 322,702.84, said point being of the northwest corner of said Block 6, Vermilion Area, Revised, said point being on the Louisiana Coastline, as decreed by the Supreme Court of the United States, as determined by a Special Master appointed therein, in litigation styled *United States v. State of Louisiana et al No. 9 Original*, in 1975; thence along said Louisiana Coast Line the following courses: South 77 degrees 55 minutes 52 seconds East 1,175.77 feet to a point having Coordinates of X = 1,663,290 and Y = 322,457; South 77 degrees 59 minutes 24 seconds East 2,599.91 feet to a point having

Coordinates of X = 1,665,833 and Y = 321,916; South 75 degrees 41 minutes 08 seconds East 1,298.31 feet to a point having Coordinates of X = 1,667,091 and Y = 321,595; South 74 degrees 41 minutes 13 seconds East 1,991.71 feet to a point having Coordinates of X = 1,669,012 and Y = 321,069; South 71 degrees 27 minutes 13 seconds East 2,115.89 feet to a point having Coordinates of X = 1,671,018 and Y = 320,396; and South 74 degrees 30 minutes 12 seconds East 2,273.41 feet to a point having Coordinates of X = 1,673,208.76 and Y = 319,788.58; thence South 8,763.81 feet to a point having Coordinates of X = 1,673,208.76 and Y = 311,024.77, said point being on the South line of said Block 6, Vermilion Area, Revised; thence West 11,068.54 feet along said South line of said Block 6, Vermilion Area, Revised, to the point of beginning, containing **2,421.12 acres**, all as more particularly outlined on a plat on file in the Office of Mineral Resources, Department of Natural Resources. All bearings, distances and coordinates are based on Louisiana Coordinate System of 1927, (North or South Zone).

NOTE: The above description of the Tract nominated for lease has been provided and corrected, where required, exclusively by the nomination party. Any mineral lease selected from this Tract and awarded by the Louisiana State Mineral Board shall be without warranty of any kind, either express, implied, or statutory, including, but not limited to, the implied warranties of merchantability and fitness for a particular purpose. Should the mineral lease awarded by the Louisiana State Mineral Board be subsequently modified, cancelled or abrogated due to the existence of conflicting leases, operating agreements, private claims or other future obligations or conditions which may affect all or any portion of the leased Tract, it shall not relieve the Lessee of the obligation to pay any bonus due thereon to the Louisiana State Mineral Board, nor shall the Louisiana State Mineral Board be obligated to refund any consideration paid by the Lessor prior to such modification, cancellation, or abrogation, including, but not limited to, bonuses, rentals and royalties.

NOTE: The State of Louisiana does hereby reserve, and this lease shall be subject to, the imprescriptible right of surface use in the nature of a servitude in favor of the Department of Natural Resources, including its Offices and Commissions, for the sole purpose of implementing, constructing, servicing and maintaining approved coastal zone management and/or restoration projects. Utilization of any and all rights derived under this lease by the mineral lessee, its agents, successors or assigns, shall not interfere with nor hinder the reasonable surface use by the Department of Natural Resources, its Offices or Commissions, as herein above reserved.

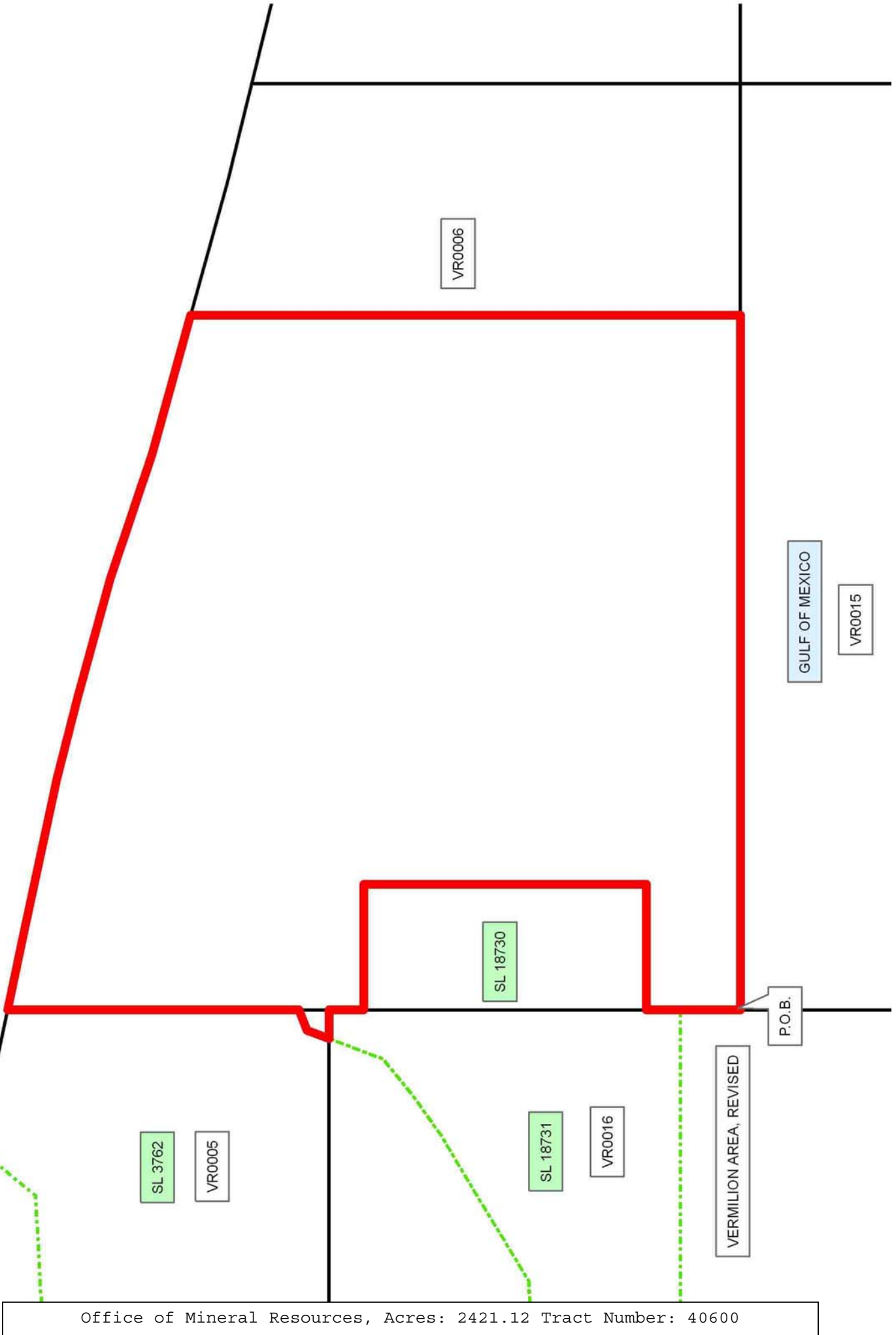
Applicant: ROBERT A. SCHROEDER, INC.

Bidder	Cash Payment	Price/Acre	Rental	Oil	Gas	Other

Legend

- 08120012
- Blocks
- Active_Leases

VERMILION PARISH



TRACT 40601 - Portion of Blocks 6, and 7, Vermilion Area, Revised, Vermilion Parish, Louisiana

The beds and bottoms of all water bodies belonging to the State of Louisiana located in Blocks 6, and 7, Vermilion Area, Revised, together with any present lands formed by accretion to the shoreline or islands formed therein, located in Vermilion Parish, Louisiana, owned by and not presently under mineral lease as of December 10, 2008, from the State of Louisiana, the geographical area of which is more fully described as follows: Beginning at a point having Coordinates of X = 1,676,898.27 and Y = 311,024.77, said point being the southeast corner of Block 6 and the southwest corner of Block 7, Vermilion Area, Revised; thence West 3,689.51 feet along the South line of said Block 6, Vermilion Area, Revised, to a point having Coordinates of X = 1,673,208.76 and Y = 311,024.77; thence North 8,763.81 feet to a point having Coordinates of X = 1,673,208.76 and Y = 319,788.58, said point being on the Louisiana Coastline, as decreed by the Supreme Court of the United States, as determined by a Special Master appointed therein, in litigation styled *United States v. State of Louisiana et al No. 9 Original*, in 1975; thence along said Louisiana Coast Line the following courses: South 74 degrees 30 minutes 12 seconds East 2,217.87 feet to a point having Coordinates of X = 1,675,346 and Y = 319,196; South 76 degrees 09 minutes 43 seconds East 1,598.67 feet to a point having Coordinates of X = 1,676,898.27 and Y = 318,813.64; South 76 degrees 09 minutes 43 seconds East 1,695.96 feet to a point having Coordinates of X = 1,678,545 and Y = 318,408; and South 77 degrees 43 minutes 38 seconds East 7,809.01 feet to a point having Coordinates of X = 1,686,175.55 and Y = 316,748.08; thence South 5,723.31 feet to a point having Coordinates of X = 1,686,175.55 and Y = 311,024.77, said point being on the South line of said Block 7, Vermilion Area, Revised; thence West 9,277.28 feet along said South line of said Block 7, Vermilion Area, Revised, to the point of beginning, containing **2,134.56 acres**, all as more particularly outlined on a plat on file in the Office of Mineral Resources, Department of Natural Resources. All bearings, distances and coordinates are based on Louisiana Coordinate System of 1927, (North or South Zone).

NOTE: The above description of the Tract nominated for lease has been provided and corrected, where required, exclusively by the nomination party. Any mineral lease selected from this Tract and awarded by the Louisiana State Mineral Board shall be without warranty of any kind, either express, implied, or statutory, including, but not limited to, the implied warranties of merchantability and fitness for a particular purpose. Should the mineral lease awarded by the Louisiana State Mineral Board be subsequently modified, cancelled or abrogated due to the existence of conflicting leases, operating agreements, private claims or other future obligations or conditions which may affect all or any portion of the leased Tract, it shall not relieve the Lessee of the obligation to pay any bonus due thereon to the Louisiana State Mineral Board, nor shall the Louisiana State Mineral Board be obligated to refund any consideration

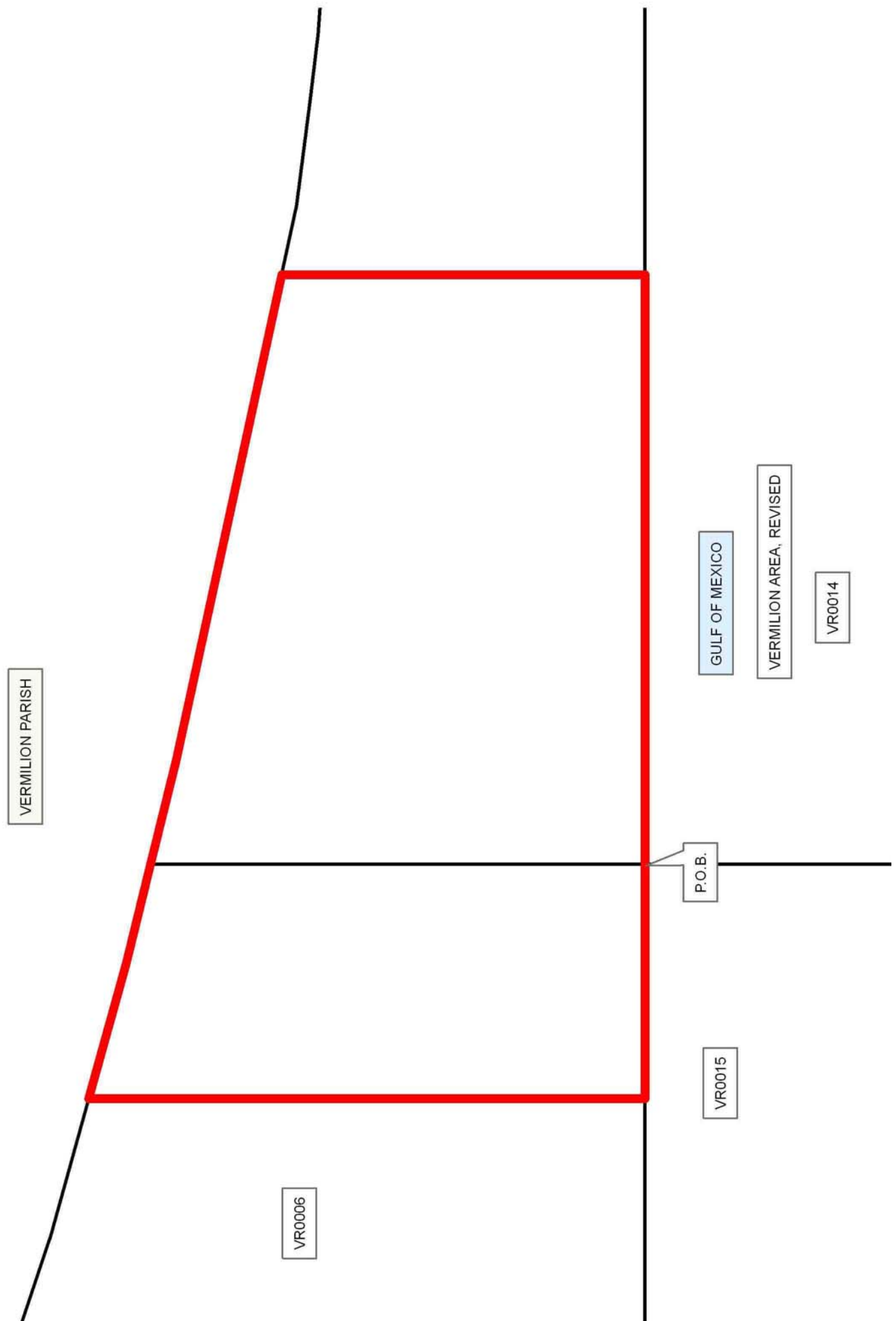
paid by the Lessor prior to such modification, cancellation, or abrogation, including, but not limited to, bonuses, rentals and royalties.

NOTE: The State of Louisiana does hereby reserve, and this lease shall be subject to, the imprescriptible right of surface use in the nature of a servitude in favor of the Department of Natural Resources, including its Offices and Commissions, for the sole purpose of implementing, constructing, servicing and maintaining approved coastal zone management and/or restoration projects. Utilization of any and all rights derived under this lease by the mineral lessee, its agents, successors or assigns, shall not interfere with nor hinder the reasonable surface use by the Department of Natural Resources, its Offices or Commissions, as herein above reserved.

Applicant: ROBERT A. SCHROEDER, INC.

Bidder	Cash Payment	Price/Acre	Rental	Oil	Gas	Other

Legend
08120016
Blocks



Office of Mineral Resources, Acres: 2134.56 Tract Number: 40601

TRACT 40602 - Portion of Block 17, Vermilion Area, Revised, Vermilion Parish, Louisiana

The beds and bottoms of all water bodies belonging to the State of Louisiana located in Block 17, Vermilion Area, Revised, together with any present lands formed by accretion to the shoreline or islands formed therein, located in Vermilion Parish, Louisiana, owned by and not presently under mineral lease as of December 10, 2008, from the State of Louisiana, the geographical area of which is more fully described as follows: Beginning at a point having Coordinates of X = 1,637,024.12 and Y = 317,582.82, said point being on the North line of Block 17, Vermilion Area, Revised; thence East 10,358.05 feet along said North line of said Block 17, Vermilion Area, Revised, to a point having Coordinates of X = 1,647,382.17 and Y = 317,582.82, said point being the Northeast of Block 17, Vermilion Area, Revised; thence South 3,252.27 feet along the East line of said Block 17, Vermilion Area, Revised, to a point having Coordinates of X = 1,647,382.17 and Y = 314,330.55, said point also being a northeastern corner of Louisiana State Lease No. 17156; thence southwesterly, northeasterly, northwesterly, southwesterly, and west along the boundaries of said Louisiana State Lease No. 17156 the following courses: South 42 degrees 30 minutes 38 seconds West 380.57 feet to a point having Coordinates of X = 1,647,125.00 and Y = 314,050.01; South 79 degrees 05 minutes 20 seconds West 2,113.20 feet to a point having Coordinates of X = 1,645,050.00 and Y = 313,650.01; North 34 degrees 49 minutes 28 seconds East 1,400.90 feet to a point having Coordinates of X = 1,645,850.01 and Y = 314,800.01; North 39 degrees 48 minutes 20 seconds East 1,171.54 feet to a point having Coordinates of X = 1,646,600.01 and Y = 315,700.01; North 42 degrees 42 minutes 34 seconds East 105.68 feet to a point having Coordinates of X = 1,646,671.69 and Y = 315,777.66; North 89 degrees 16 minutes 38 seconds West 6,200.50 feet to a point having Coordinates of X = 1,640,471.68 and Y = 315,855.88; South 06 degrees 55 minutes 12 seconds West 303.86 feet to a point having Coordinates of X = 1,640,435.07 and Y = 315,554.23; South 11 degrees 08 minutes 33 seconds West 369.26 feet to a point having Coordinates of X = 1,640,363.71 and Y = 315,191.93; South 19 degrees 26 minutes 17 seconds West 413.81 feet to a point having Coordinates of X = 1,640,226.00 and Y = 314,801.71; South 24 degrees 11 minutes 25 seconds West 173.66 feet to a point having Coordinates of X = 1,640,154.84 and Y = 314,643.30; South 27 degrees 19 minutes 09 seconds West 398.94 feet to a point having Coordinates of X = 1,639,971.75 and Y = 314,288.86; South 33 degrees 56 minutes 36 seconds West 463.79 feet to a point having Coordinates of X = 1,639,712.78 and Y = 313,904.10; South 40 degrees 40 minutes 12 seconds West 335.00 feet to a point having Coordinates of X = 1,639,494.46 and Y = 313,650.01; and West 2,470.34 feet to a point having Coordinates of X = 1,637,024.12 and Y = 313,650.01; thence North 3,932.81 feet to the point of beginning, containing **638.32 acres**, all as more particularly outlined on a plat on file in the Office of Mineral Resources, Department of Natural Resources. All bearings, distances and coordinates are based on Louisiana Coordinate System of 1927, (North or South Zone).

NOTE: The above description of the Tract nominated for lease has been provided and corrected, where required, exclusively by the nomination party. Any mineral lease selected from this Tract and awarded by the Louisiana State Mineral Board shall be without warranty of any kind, either express, implied, or statutory, including, but not limited to, the implied warranties of merchantability and fitness for a particular purpose. Should the mineral lease awarded by the Louisiana State Mineral Board be subsequently modified, cancelled or abrogated due to the existence of conflicting leases, operating agreements, private claims or other future obligations or conditions which may affect all or any portion of the leased Tract, it shall not relieve the Lessee of the obligation to pay any bonus due thereon to the Louisiana State Mineral Board, nor shall the Louisiana State Mineral Board be obligated to refund any consideration paid by the Lessor prior to such modification, cancellation, or abrogation, including, but not limited to, bonuses, rentals and royalties.

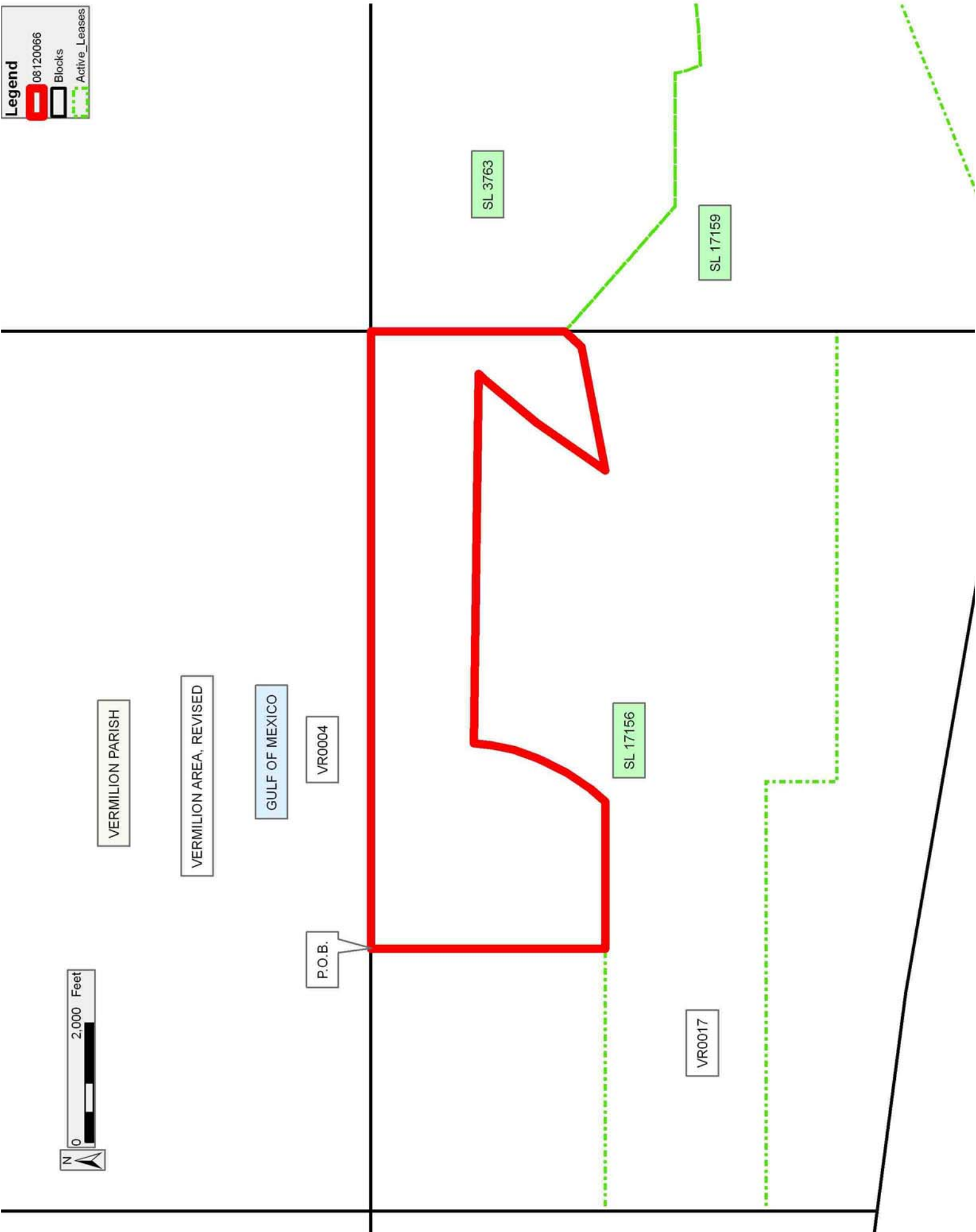
NOTE: The State of Louisiana does hereby reserve, and this lease shall be subject to, the imprescriptible right of surface use in the nature of a servitude in favor of the Department of Natural Resources, including its Offices and Commissions, for the sole purpose of implementing, constructing, servicing and maintaining approved coastal zone management and/or restoration projects. Utilization of any and all rights derived under this lease by the mineral lessee, its agents, successors or assigns, shall not interfere with nor hinder the reasonable surface use by the Department of Natural Resources, its Offices or Commissions, as herein above reserved.

Applicant: ROBERT A. SCHROEDER, INC.

Bidder	Cash Payment	Price/Acre	Rental	Oil	Gas	Other

Legend

- 08120066
- Blocks
- Active_Leases



TRACT 40603 - Portion of Blocks 17, and 18, Vermilion Area, Revised, Vermilion Parish, Louisiana

The beds and bottoms of all water bodies belonging to the State of Louisiana located in Blocks 17, and 18, Vermilion Area, Revised, together with any present lands formed by accretion to the shoreline or islands formed therein, located in Vermilion Parish, Louisiana, owned by and not presently under mineral lease as of December 10, 2008, from the State of Louisiana, the geographical area of which is more fully described as follows: Beginning at a point having Coordinates of X = 1,632,624.12 and Y = 317,582.82, said point being the northwest corner of Block 17 and the northeast corner of Block 18, Vermilion Area, Revised; thence East 4,400.00 feet along the North line of said Block 17, Vermilion Area, Revised, to a point having Coordinates of X = 1,637,024.12 and Y = 317,582.82, said point being the northwestern corner of Louisiana State Lease No. 3624, as amended; thence South 3,932.81 feet along the western boundary of said Louisiana State Lease No. 3624, as amended, to a point having Coordinates of X = 1,637,024.12 and Y = 313,650.01, said point being the Southwesternmost corner of said Louisiana State Lease No. 3624, said point also being on a northern boundary of Louisiana State Lease No. 17156; thence along the northern, western, and southern boundaries of said Louisiana State Lease No. 17156 the following courses: West 4,400.00 feet to a point having Coordinates of X = 1,632,624.12 and Y = 313,650.01, said point being a northwestern corner of said Louisiana State Lease No. 17156, said point also being on the line common to Blocks 17 and 18, Vermilion Area, Revised; South 2,700.00 feet along said line common to Blocks 17 and 18, Vermilion Area, Revised, to a point having Coordinates of X = 1,632,624.12 and Y = 310,950.01, said point being a southwestern corner of said Louisiana State Lease No. 17156; East 7,200.00 feet to a point having Coordinates of X = 1,639,824.12 and Y = 310,950.01, said point being a southwestern corner of said Louisiana State Lease No. 17156; South 1,189.51 feet to a point having Coordinates of X = 1,639,824.12 and Y = 309,760.50, said point being a southwestern corner of Louisiana State Lease No. 17156; and East 2,136.28 feet to a point having Coordinates of X = 1,641,960.40 and Y = 309,760.50, said point being the northwesternmost corner of Louisiana State Lease No. 17157; thence South 38 degrees 27 minutes 42 seconds West 2,393.48 feet along the western boundary of said Louisiana State Lease No. 17157 to a point of intersection with the Three Mile Line, as decreed by the Supreme Court of the United States, as determined by a Special Master appointed therein, in litigation styled *United States v. State of Louisiana et al No. 9 Original*, in 1975, having Coordinates of X = 1,640,471.68 and Y = 307,886.35; thence along said three (3) mile line the following courses: North 80 degrees 13 minutes 03 seconds West 4,241.35 feet to a point having Coordinates of X = 1,636,292 and Y = 308,607; North 82 degrees 32 minutes 17 seconds West 3,699.21 feet to a point having Coordinates of X = 1,632,624.12 and Y = 309,087.40; and North 82 degrees 32 minutes 17 seconds West 3,982.58 feet to a point having Coordinates of X = 1,628,675.27 and Y = 309,604.61; thence North 7,978.21 feet to a point having Coordinates of X = 1,628,675.27 and Y = 317,582.82, said point being on the North line of Block 18, Vermilion

Area, Revised; thence East 3,948.85 feet along said North line of said Block 18, Vermilion Area, Revised, to the point of beginning, containing **1,594.74 acres, LESS AND EXCEPT** that portion thereof, if any, lying seaward of the line three nautical miles from the coast line of Louisiana, as said three mile line has been decreed by the Supreme Court of the United States, as determined by a Special Master appointed therein, in litigation styled **United States v. State of Louisiana et al No. 9 Original**, in 1975, all as more particularly outlined on a plat in the Office of Mineral Resources, Department of Natural Resources. All bearings, distances and coordinates are based on the Louisiana Coordinate System of 1927, (South Zone).

NOTE: The above description of the Tract nominated for lease has been provided and corrected, where required, exclusively by the nomination party. Any mineral lease selected from this Tract and awarded by the Louisiana State Mineral Board shall be without warranty of any kind, either express, implied, or statutory, including, but not limited to, the implied warranties of merchantability and fitness for a particular purpose. Should the mineral lease awarded by the Louisiana State Mineral Board be subsequently modified, cancelled or abrogated due to the existence of conflicting leases, operating agreements, private claims or other future obligations or conditions which may affect all or any portion of the leased Tract, it shall not relieve the Lessee of the obligation to pay any bonus due thereon to the Louisiana State Mineral Board, nor shall the Louisiana State Mineral Board be obligated to refund any consideration paid by the Lessor prior to such modification, cancellation, or abrogation, including, but not limited to, bonuses, rentals and royalties.

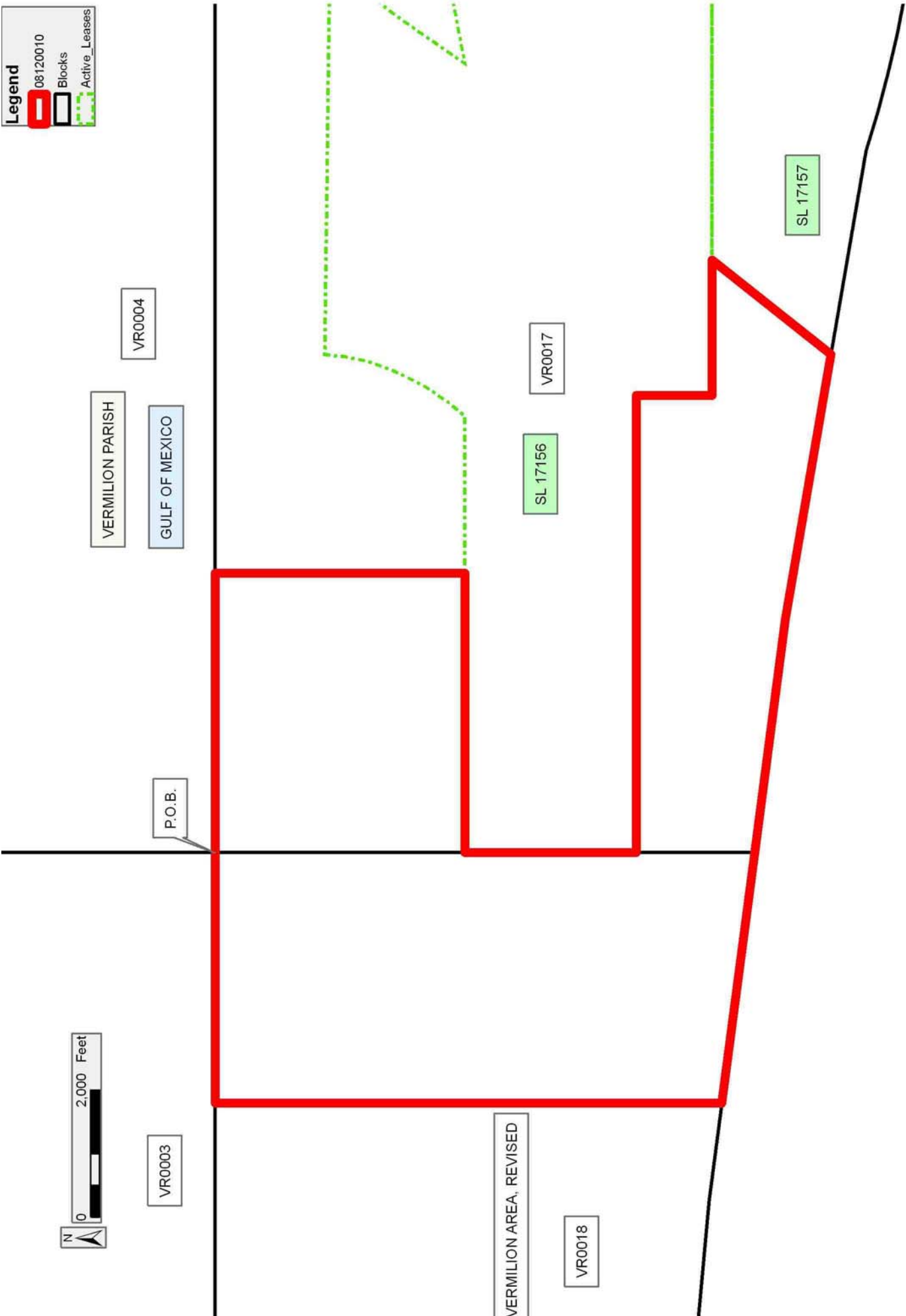
NOTE: The State of Louisiana does hereby reserve, and this lease shall be subject to, the imprescriptible right of surface use in the nature of a servitude in favor of the Department of Natural Resources, including its Offices and Commissions, for the sole purpose of implementing, constructing, servicing and maintaining approved coastal zone management and/or restoration projects. Utilization of any and all rights derived under this lease by the mineral lessee, its agents, successors or assigns, shall not interfere with nor hinder the reasonable surface use by the Department of Natural Resources, its Offices or Commissions, as herein above reserved.

Applicant: ROBERT A. SCHROEDER, INC.

Bidder	Cash Payment	Price/Acre	Rental	Oil	Gas	Other

Legend

- 08120010
- Blocks
- Active_Leases



TRACT 40604 - Portion of Blocks 13, 14, 7, and 8, Vermilion Area, Revised, Vermilion Parish, Louisiana

The beds and bottoms of all water bodies belonging to the State of Louisiana located in Blocks 13, 14, 7, and 8, Vermilion Area, Revised, together with any present lands formed by accretion to the shoreline or islands formed therein, located in Vermilion Parish, Louisiana, owned by and not presently under mineral lease as of December 10, 2008, from the State of Louisiana, the geographical area of which is more fully described as follows: Beginning at a point having Coordinates of X = 1,691,656.32 and Y = 302,824.77, said point being the southwest corner of Block 13, Vermilion Area, Revised; thence North 2,750.35 feet along the West line of said Block 13, Vermilion Area, Revised, to a point having Coordinates of X = 1,691,656.32 and Y = 305,575.12, said point being a northeastern corner of Louisiana State Lease No. 861, as amended; thence North 45 degrees, 09 minutes 47 seconds West 7,729.01 feet along a northeastern boundary of said Louisiana State Lease No. 861, as amended, to a point having Coordinates of X = 1,686,175.55 and Y = 311,024.77, said point being on the line common to Block 7 and said Block 14, Vermilion Area, Revised; thence North 5,723.31 feet to a point having Coordinates of X = 1,686,175.55 and Y = 316,748.08, said point being on the Louisiana Coastline, as decreed by the Supreme Court of the United States, as determined by a Special Master appointed therein, in litigation styled *United States v. State of Louisiana et al No. 9 Original*, in 1975; thence along said Louisiana Coast Line the following courses: South 77 degrees 43 minutes 38 seconds East 1,120.05 feet to a point having Coordinates of X = 1,687,270 and Y = 316,510; South 82 degrees 50 minutes 56 seconds East 2,731.25 feet to a point having Coordinates of X = 1,689,980 and Y = 316,170; South 86 degrees 01 minutes 17 seconds East 1,680.37 feet to a point having Coordinates of X = 1,691,656.32 and Y = 316,053.41; South 86 degrees 01 minutes 17 seconds East 913.89 feet to a point having Coordinates of X = 1,692,568 and Y = 315,990; and South 89 degrees 37 minutes 20 seconds East 3,791.08 feet to a point having Coordinates of X = 1,696,359 and Y = 315,965; thence South 4,940.00 feet to a point having Coordinates of X = 1,696,359.00 and Y = 311,024.77, said point being on the line common to Block 8 and said Block 13, Vermilion Area, Revised; thence South 8,200.00 feet to a point having Coordinates of X = 1,696,359.00 and Y = 302,824.77, said point being on the South line of said Block 13, Vermilion Area, Revised; thence West 4,702.68 feet along said South line of said Block 13, Vermilion Area, Revised, to the point of beginning, containing **2,430.96 acres**, all as more particularly outlined on a plat on file in the Office of Mineral Resources, Department of Natural Resources. All bearings, distances and coordinates are based on Louisiana Coordinate System of 1927, (North or South Zone).

NOTE: The above description of the Tract nominated for lease has been provided and corrected, where required, exclusively by the nomination party. Any mineral lease selected from this Tract and awarded by the Louisiana State Mineral Board shall be without warranty of any kind, either express, implied, or statutory, including, but not limited to, the




implied warranties of merchantability and fitness for a particular purpose. Should the mineral lease awarded by the Louisiana State Mineral Board be subsequently modified, cancelled or abrogated due to the existence of conflicting leases, operating agreements, private claims or other future obligations or conditions which may affect all or any portion of the leased Tract, it shall not relieve the Lessee of the obligation to pay any bonus due thereon to the Louisiana State Mineral Board, nor shall the Louisiana State Mineral Board be obligated to refund any consideration paid by the Lessor prior to such modification, cancellation, or abrogation, including, but not limited to, bonuses, rentals and royalties.

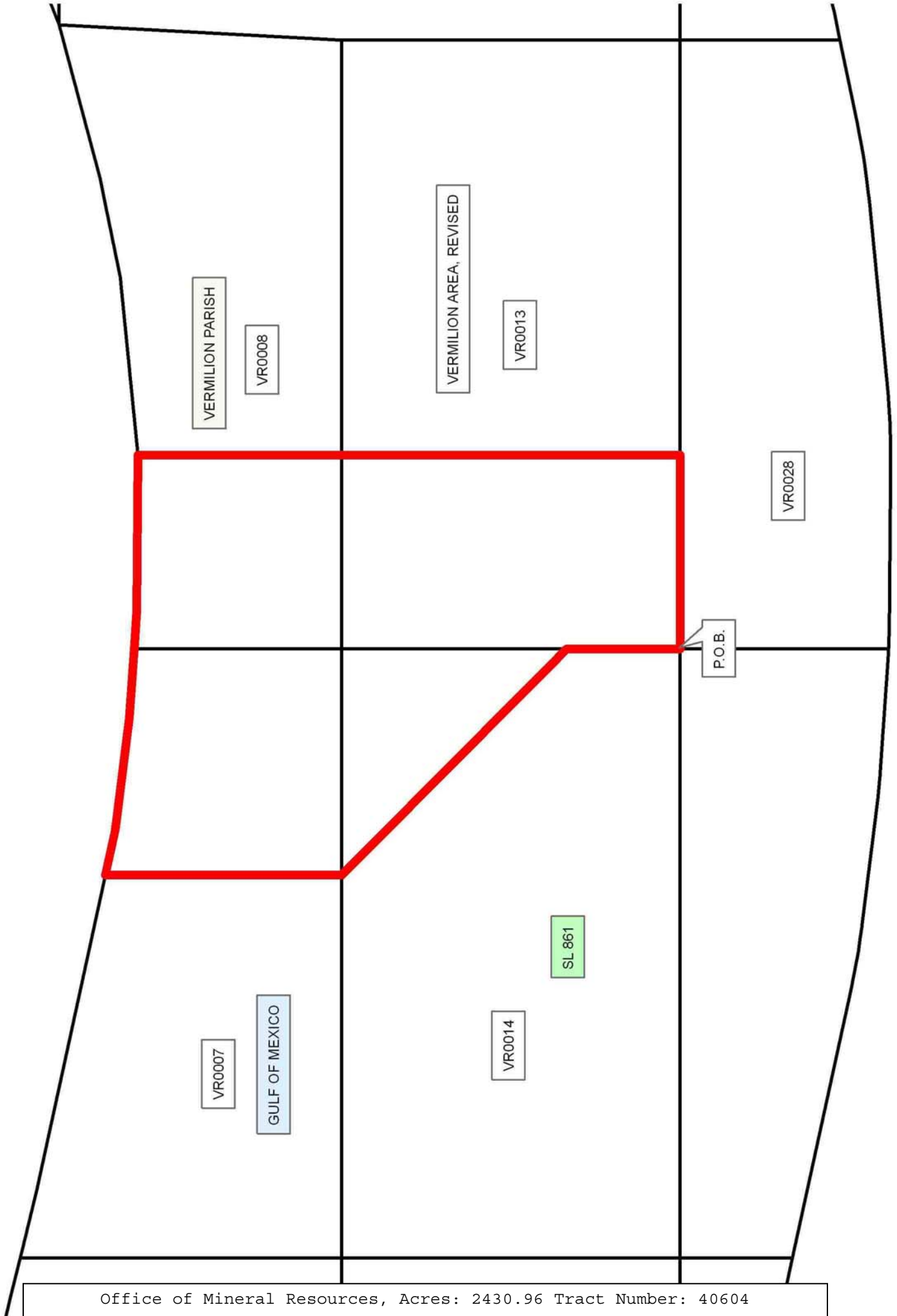
NOTE: The State of Louisiana does hereby reserve, and this lease shall be subject to, the imprescriptible right of surface use in the nature of a servitude in favor of the Department of Natural Resources, including its Offices and Commissions, for the sole purpose of implementing, constructing, servicing and maintaining approved coastal zone management and/or restoration projects. Utilization of any and all rights derived under this lease by the mineral lessee, its agents, successors or assigns, shall not interfere with nor hinder the reasonable surface use by the Department of Natural Resources, its Offices or Commissions, as herein above reserved.

Applicant: ROBERT A. SCHROEDER, INC.

Bidder	Cash Payment	Price/Acre	Rental	Oil	Gas	Other

Legend

-  08120017
-  Blocks
-  Active_Leases



TRACT 40605 - Portion of Block 16, Vermilion Area, Revised, Vermilion Parish, Louisiana

The beds and bottoms of all water bodies belonging to the State of Louisiana located in Block 16, Vermilion Area, Revised, together with any present lands formed by accretion to the shoreline or islands formed therein, located in Vermilion Parish, Louisiana, owned by and not presently under mineral lease as of December 10, 2008, from the State of Louisiana, the geographical area of which is more fully described as follows: Beginning at a point having Coordinates of X = 1,662,140.22 and Y = 311,024.77, said point being on the East line of Block 16, Vermilion Area, Revised; thence South 6,991.64 feet along said East line of said Block 16, Vermilion Area, Revised, to a point on the Three Mile Line, as decreed by the Supreme Court of the United States, as determined by a Special Master appointed therein, in litigation styled *United States v. State of Louisiana et al No. 9 Original*, in 1975, having Coordinates of X = 1,662,140.22 and Y = 304,033.13; thence along said three (3) mile line the following courses: North 75 degrees 41 minutes 38 seconds West 477.01 feet to a point having Coordinates of X = 1,661,678 and Y = 304,151; North 77 degrees 58 minutes 50 seconds West 2,232.95 feet to a point having Coordinates of X = 1,659,494 and Y = 304,616; Northwesterly on an arc having a radius of 18,240.60 feet and an arc length of 18.44 feet to a point having Coordinates of X = 1,659,476 and Y = 304,620; North 77 degrees 55 minutes 42 seconds West 1,386.66 feet to a point having Coordinates of X = 1,658,120 and Y = 304,910; and Northwesterly on an arc having a radius of 18,240.60 feet and an arc length of 1,773.93 feet to a point having Coordinates of X = 1,656,354 and Y = 305,070, said point being the southeastern corner of Louisiana State Lease No. 17728; thence North 5,000.00 feet along the eastern boundary of said Louisiana State Lease No. 17728 to a point having Coordinates of X = 1,656,354.00 and Y = 310,070.00, said point being the northeastern corner of said Louisiana State Lease No. 17728, said point also being the southeastern corner of Louisiana State Lease No. 17159; thence North 1,912.82 feet along the eastern boundary of said Louisiana State Lease No. 17159 to a point having Coordinates of X = 1,656,354.00 and Y = 311,982.82, said point being the southwest corner of Louisiana State Lease No. 18731; thence East 5,786.22 feet along the southern boundary of said Louisiana State Lease No. 18731 to a point having Coordinates of X = 1,662,140.22 and Y = 311,982.82, said point being the northeastern corner of Louisiana State Lease No. 18731, said point also being on said East line of said Block 16, Vermilion Area, Revised; thence South 985.05 feet along said East line of said Block 16, Vermilion Area, Revised, to the point of beginning, containing **976.56 acres, LESS AND EXCEPT** that portion thereof, if any, lying seaward of the line three nautical miles from the coast line of Louisiana, as said three mile line has been decreed by the Supreme Court of the United States, as determined by a Special Master appointed therein, in litigation styled **United States v. State of Louisiana et al No. 9 Original**, in 1975, all as more particularly outlined on a plat in the Office of Mineral Resources, Department of Natural Resources. All bearings, distances and coordinates are based on the Louisiana Coordinate System of 1927, (South Zone).

NOTE: The above description of the Tract nominated for lease has been provided and corrected, where required, exclusively by the nomination party. Any mineral lease selected from this Tract and awarded by the Louisiana State Mineral Board shall be without warranty of any kind, either express, implied, or statutory, including, but not limited to, the implied warranties of merchantability and fitness for a particular purpose. Should the mineral lease awarded by the Louisiana State Mineral Board be subsequently modified, cancelled or abrogated due to the existence of conflicting leases, operating agreements, private claims or other future obligations or conditions which may affect all or any portion of the leased Tract, it shall not relieve the Lessee of the obligation to pay any bonus due thereon to the Louisiana State Mineral Board, nor shall the Louisiana State Mineral Board be obligated to refund any consideration paid by the Lessor prior to such modification, cancellation, or abrogation, including, but not limited to, bonuses, rentals and royalties.

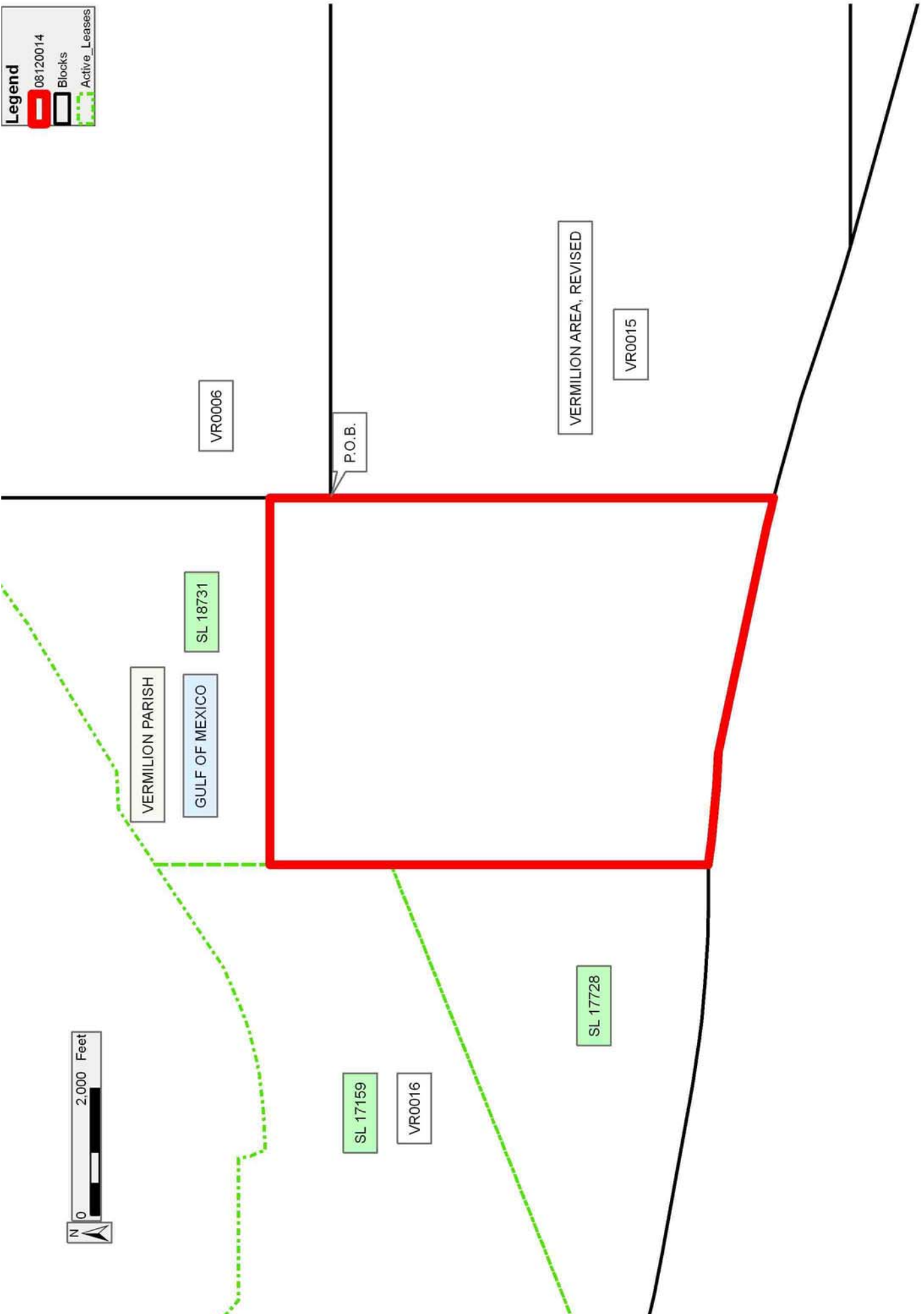
NOTE: The State of Louisiana does hereby reserve, and this lease shall be subject to, the imprescriptible right of surface use in the nature of a servitude in favor of the Department of Natural Resources, including its Offices and Commissions, for the sole purpose of implementing, constructing, servicing and maintaining approved coastal zone management and/or restoration projects. Utilization of any and all rights derived under this lease by the mineral lessee, its agents, successors or assigns, shall not interfere with nor hinder the reasonable surface use by the Department of Natural Resources, its Offices or Commissions, as herein above reserved.

Applicant: ROBERT A. SCHROEDER, INC.

Bidder	Cash Payment	Price/Acre	Rental	Oil	Gas	Other

Legend

- 08120014
- Blocks
- Active_Leases



TRACT 40606 - Portion of Block 15, Vermilion Area, Revised, Vermilion Parish, Louisiana

The beds and bottoms of all water bodies belonging to the State of Louisiana located in Block 15, Vermilion Area, Revised, together with any present lands formed by accretion to the shoreline or islands formed therein, located in Vermilion Parish, Louisiana, owned by and not presently under mineral lease as of December 10, 2008, from the State of Louisiana, the geographical area of which is more fully described as follows: Beginning at a point having Coordinates of X = 1,662,140.22 and Y = 311,024.77, said point being the northwest corner of Block 15, Vermilion Area, Revised; thence East 11,068.54 feet along the North line of said Block 15, Vermilion Area, Revised, to a point having Coordinates of X = 1,673,208.76 and Y = 311,024.77; thence South 6,150.00 feet to a point having Coordinates of X = 1,673,208.76 and Y = 304,874.77, said point being the northwest corner of Louisiana State Lease No. 862, as amended; thence South 2,050.00 feet along the western boundary of said Louisiana State Lease No. 862, as amended, to a point having Coordinates of X = 1,673,208.76 and Y = 302,824.77, said point being the southwest corner of said Louisiana State Lease No. 862, as amended, said point also being on the South line of said Block 15, Vermilion Area, Revised; thence West 7,086.81 feet along said South line of said Block 15, Vermilion Area, Revised, to a point of intersection with the Three Mile Line, as decreed by the Supreme Court of the United States, as determined by a Special Master appointed therein, in litigation styled *United States v. State of Louisiana et al No. 9 Original*, in 1975, having Coordinates of X = 1,666,121.95 and Y = 302,824.77; thence along said three (3) mile line the following courses: Northwesterly on an arc having a radius of 18,240.60 feet and an arc length of 947.82 feet to a point having Coordinates of X = 1,665,216 and Y = 303,103; North 71 degrees 27 minutes 48 seconds West 1,601.06 feet to a point having Coordinates of X = 1,663,698 and Y = 303,612; North 74 degrees 41 minutes 16 seconds West 1,317.78 feet to a point having Coordinates of X = 1,662,427 and Y = 303,960; and North 75 degrees 41 minutes 39 seconds West 295.96 feet to a point having Coordinates of X = 1,662,140.22 and Y = 304,033.13, said point being on the West line of said Block 15, Vermilion Area, Revised; thence North 6,991.64 feet along said West line of said Block 15, Vermilion Area, Revised, to the point of beginning, containing **2,026.48 acres, LESS AND EXCEPT** that portion thereof, if any, lying seaward of the line three nautical miles from the coast line of Louisiana, as said three mile line has been decreed by the Supreme Court of the United States, as determined by a Special Master appointed therein, in litigation styled **United States v. State of Louisiana et al No. 9 Original**, in 1975, all as more particularly outlined on a plat in the Office of Mineral Resources, Department of Natural Resources. All bearings, distances and coordinates are based on the Louisiana Coordinate System of 1927, (South Zone).

NOTE: The above description of the Tract nominated for lease has been provided and corrected, where required, exclusively by the nomination party. Any mineral lease selected from this Tract and awarded by the

Louisiana State Mineral Board shall be without warranty of any kind, either express, implied, or statutory, including, but not limited to, the implied warranties of merchantability and fitness for a particular purpose. Should the mineral lease awarded by the Louisiana State Mineral Board be subsequently modified, cancelled or abrogated due to the existence of conflicting leases, operating agreements, private claims or other future obligations or conditions which may affect all or any portion of the leased Tract, it shall not relieve the Lessee of the obligation to pay any bonus due thereon to the Louisiana State Mineral Board, nor shall the Louisiana State Mineral Board be obligated to refund any consideration paid by the Lessor prior to such modification, cancellation, or abrogation, including, but not limited to, bonuses, rentals and royalties.

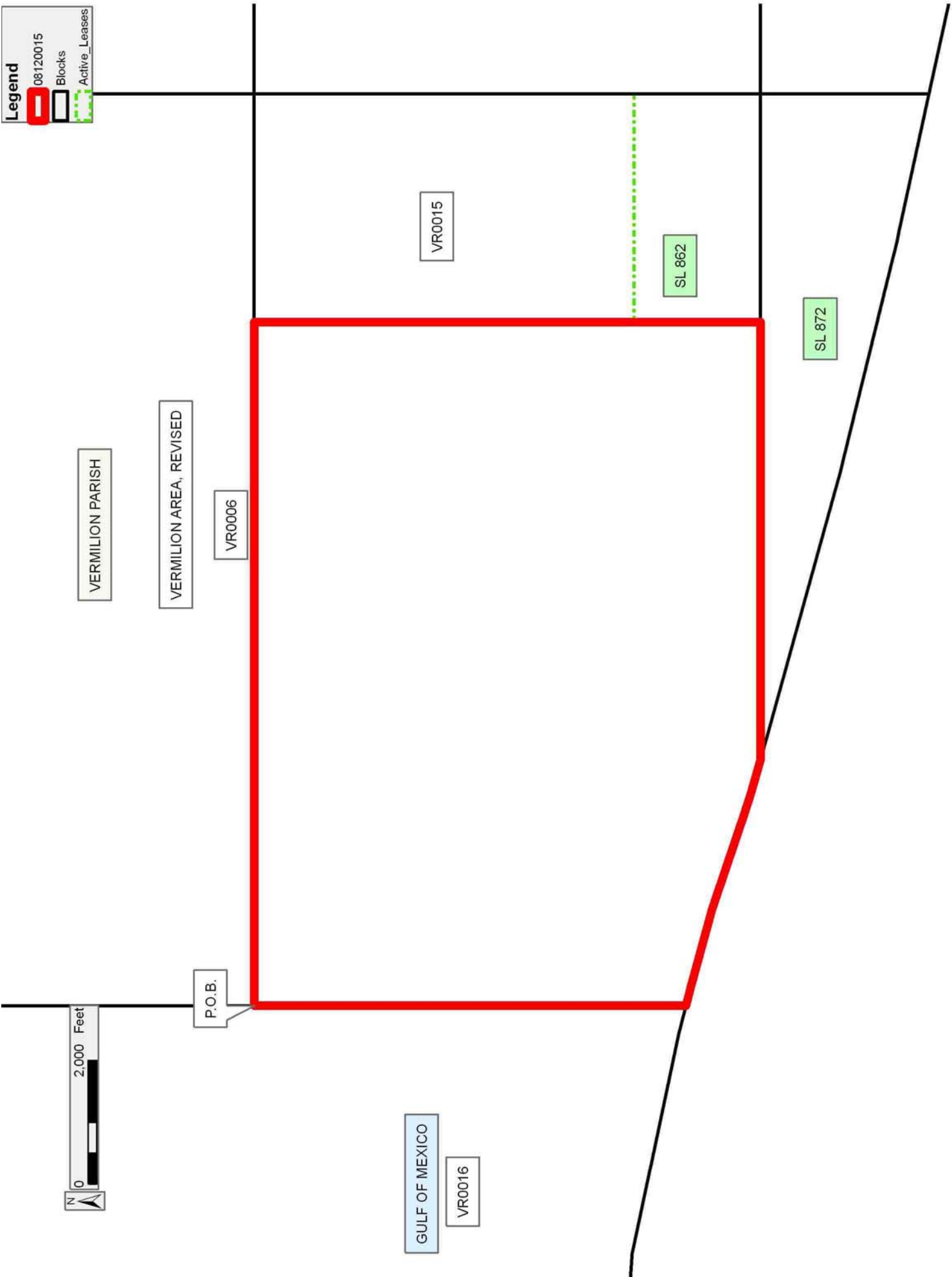
NOTE: The State of Louisiana does hereby reserve, and this lease shall be subject to, the imprescriptible right of surface use in the nature of a servitude in favor of the Department of Natural Resources, including its Offices and Commissions, for the sole purpose of implementing, constructing, servicing and maintaining approved coastal zone management and/or restoration projects. Utilization of any and all rights derived under this lease by the mineral lessee, its agents, successors or assigns, shall not interfere with nor hinder the reasonable surface use by the Department of Natural Resources, its Offices or Commissions, as herein above reserved.

Applicant: ROBERT A. SCHROEDER, INC.

Bidder	Cash Payment	Price/Acre	Rental	Oil	Gas	Other

Legend

- 08120015
- Blocks
- Active_Leases



TRACT 40607 - Portion of Block 15, Vermilion Area, Revised, Vermilion Parish, Louisiana

The beds and bottoms of all water bodies belonging to the State of Louisiana located in Block 15, Vermilion Area, Revised, together with any present lands formed by accretion to the shoreline or islands formed therein, located in Vermilion Parish, Louisiana, owned by and not presently under mineral lease as of December 10, 2008, from the State of Louisiana, the geographical area of which is more fully described as follows: Beginning at a point having Coordinates of X = 1,676,898.27 and Y = 311,024.77, said point being the northeast corner of Block 15, Vermilion Area, Revised; thence South 6,150.00 feet along the East line of said Block 15, Vermilion Area, Revised, to a point having Coordinates of X = 1,676,898.27 and Y = 304,874.77, said point being the northeast corner of Louisiana State Lease No. 862, as amended; thence West 3,689.51 feet along the northern boundary of said Louisiana State Lease No. 862, as amended, to a point having Coordinates of X = 1,673,208.76 and Y = 304,874.77, said point being the northwest corner of said Louisiana State Lease No. 862, as amended; thence North 6,150.00 feet a point having Coordinates of X = 1,673,208.76 and Y = 311,024.77, said point being on the North line of said Block 15, Vermilion Area, Revised; thence East 3,689.51 feet along said North line of said Block 15, Vermilion Area, Revised, to the point of beginning, containing **520.90 acres**, all as more particularly outlined on a plat on file in the Office of Mineral Resources, Department of Natural Resources. All bearings, distances and coordinates are based on Louisiana Coordinate System of 1927, (North or South Zone).

NOTE: The above description of the Tract nominated for lease has been provided and corrected, where required, exclusively by the nomination party. Any mineral lease selected from this Tract and awarded by the Louisiana State Mineral Board shall be without warranty of any kind, either express, implied, or statutory, including, but not limited to, the implied warranties of merchantability and fitness for a particular purpose. Should the mineral lease awarded by the Louisiana State Mineral Board be subsequently modified, cancelled or abrogated due to the existence of conflicting leases, operating agreements, private claims or other future obligations or conditions which may affect all or any portion of the leased Tract, it shall not relieve the Lessee of the obligation to pay any bonus due thereon to the Louisiana State Mineral Board, nor shall the Louisiana State Mineral Board be obligated to refund any consideration paid by the Lessor prior to such modification, cancellation, or abrogation, including, but not limited to, bonuses, rentals and royalties.




NOTE: The State of Louisiana does hereby reserve, and this lease shall be subject to, the imprescriptible right of surface use in the nature of a servitude in favor of the Department of Natural Resources, including its Offices and Commissions, for the sole purpose of implementing, constructing, servicing and maintaining approved coastal zone management and/or restoration projects. Utilization of any and all rights derived under this lease by the mineral lessee, its agents, successors or assigns,

shall not interfere with nor hinder the reasonable surface use by the Department of Natural Resources, its Offices or Commissions, as herein above reserved.

Applicant: ROBERT A. SCHROEDER, INC.

Bidder	Cash Payment	Price/Acre	Rental	Oil	Gas	Other

Legend

-  08120013
-  Blocks
-  Active_Leases



VERMILION PARISH

GULF OF MEXICO

VR0006

VR0007

P.O.B.

VERMILION AREA, REVISED

VR0015

VR0014

SL 861

SL 862

TRACT 40608 - Portion of Block 41, South Pass Area, Plaquemines Parish, Louisiana

The beds and bottoms of all water bodies belonging to the State of Louisiana located in Block 41, South Pass Area, together with any present lands formed by accretion to the shoreline or islands formed therein, located in Plaquemines Parish, Louisiana, owned by and not presently under mineral lease as of December 10, 2008, from the State of Louisiana, the geographical area of which is more fully described as follows: Beginning at a point having Coordinates of X = 2,605,477.93 and Y = 98,380.00; thence East 3,500.00 feet to a point on the West line of State Lease No. 17193 having Coordinates X = 2,608,977.93 and Y = 98,380.00; thence South 2,073.32 feet along the West line of said State Lease No. 17193 to a point of intersection with the Northwest corner of State Lease No. 17381, having Coordinates of X = 2,608,977.93 and Y = 96,306.68; thence along the boundaries of said State Lease No. 17381 the following courses: South 35 degrees 37 minutes 33 seconds West 537.23 feet; thence South 29 degrees 15 minutes 25 seconds West 2,475.82 feet; thence South 5 degrees 52 minutes 11 seconds West 537.82 feet; thence South 39 degrees 10 minutes 25 seconds West 174.14 feet; thence South 49 degrees 50 minutes 18 seconds East 2,473.08 feet; thence North 63 degrees 14 minutes 45 seconds East 677.53 feet; thence North 51 degrees 20 minutes 25 seconds East 480.23 feet; thence North 38 degrees 58 minutes 39 seconds East 2,675.61 feet; thence North 38 degrees 56 minutes 35 seconds East 1,558.43 feet to a point of intersection with the Northeast corner of said State Lease No. 17381, also being a point on the South boundary of said State Lease No. 17193, having Coordinates X = 2,612,822.55 and Y = 95,342.10; thence East 3,105.45 feet along the South line of said State Lease No. 17193 to its Southeast corner having Coordinates of X = 2,615,928.00 and Y = 95,342.10; thence South 1,876.60 feet to a point having Coordinates of X = 2,615,928.00 and Y = 93,465.50; thence South 44 degrees 34 minutes 35 seconds West, 14,889.14 feet to a point having Coordinates of X = 2,605,477.93 and Y = 82,859.72; thence North 6,490.62 feet to the Southeast corner of Operating Agreement No. AO 0232, having Coordinates X = 2,605,477.93 and Y = 89,350.34; thence North 8,907.36 feet along the East line of said Operating Agreement No. AO 0232 to its Northeast corner, having Coordinates X = 2,605,477.93 and Y = 98,257.70; thence North 122.30 feet to the point of beginning, containing approximately **1,667.70 acres**, all as more particularly outlined on a plat on file in the Office of Mineral Resources, Department of Natural Resources. All bearings, distances and coordinates are based on Louisiana Coordinate System of 1927, (North or South Zone).

NOTE: The above description of the Tract nominated for lease has been provided and corrected, where required, exclusively by the nomination party. Any mineral lease selected from this Tract and awarded by the Louisiana State Mineral Board shall be without warranty of any kind, either express, implied, or statutory, including, but not limited to, the implied warranties of merchantability and fitness for a particular purpose. Should the mineral lease awarded by the Louisiana State Mineral Board be subsequently modified, cancelled or abrogated due to the

existence of conflicting leases, operating agreements, private claims or other future obligations or conditions which may affect all or any portion of the leased Tract, it shall not relieve the Lessee of the obligation to pay any bonus due thereon to the Louisiana State Mineral Board, nor shall the Louisiana State Mineral Board be obligated to refund any consideration paid by the Lessor prior to such modification, cancellation, or abrogation, including, but not limited to, bonuses, rentals and royalties.




NOTE: The State of Louisiana does hereby reserve, and this lease shall be subject to, the imprescriptible right of surface use in the nature of a servitude in favor of the Department of Natural Resources, including its Offices and Commissions, for the sole purpose of implementing, constructing, servicing and maintaining approved coastal zone management and/or restoration projects. Utilization of any and all rights derived under this lease by the mineral lessee, its agents, successors or assigns, shall not interfere with nor hinder the reasonable surface use by the Department of Natural Resources, its Offices or Commissions, as herein above reserved.

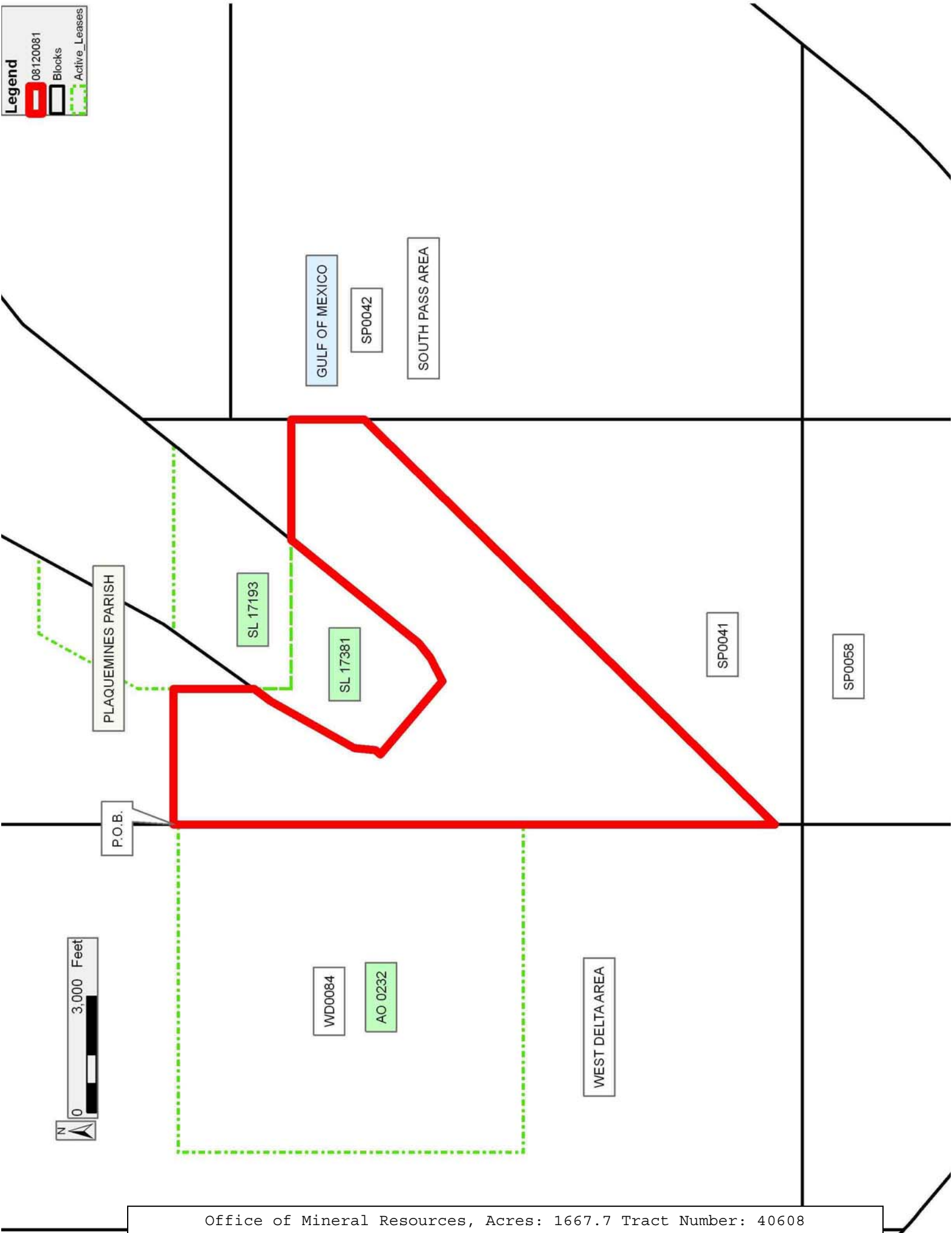
NOTE: It appears, according to our records, that a portion of this Tract is located within the restrictive safety fairway area as set out by the Corps of Engineers, U.S. Army and/or the restrictive anchorage area as set out by the U.S. Coast Guard.

Applicant: DELTA LANDS EXPLORATION, INC.

Bidder	Cash Payment	Price/Acre	Rental	Oil	Gas	Other

Legend

-  08120081
-  Blocks
-  Active_Leases



TRACT 40609 - Portion of Block 42, South Pass Area, Plaquemines Parish, Louisiana

The beds and bottoms of all water bodies belonging to the State of Louisiana located in Block 42, South Pass Area, together with any present lands formed by accretion to the shoreline or islands formed therein, located in Plaquemines Parish, Louisiana, owned by and not presently under mineral lease as of December 10, 2008, from the State of Louisiana, the geographical area of which is more fully described as follows: Beginning at the Southeast Corner of State Lease No. 17193 having Coordinates of X = 2,615,928.00 and Y = 95,342.10; thence East 5,000.00 feet to a point having Coordinates X = 2,620,928.00 and Y = 95,342.10; thence South 12,482.38 feet to a point having Coordinates X = 2,620,928.00 and Y = 82,859.72; thence West 5,000.00 feet to a point having Coordinates X = 2,615,928.00 and Y = 82,859.72; thence North 12,482.38 feet to the point of beginning, containing approximately **1,432.78 acres**, all as more particularly outlined on a plat on file in the Office of Mineral Resources, Department of Natural Resources. All bearings, distances and coordinates are based on Louisiana Coordinate System of 1927, (North or South Zone).

NOTE: The above description of the Tract nominated for lease has been provided and corrected, where required, exclusively by the nomination party. Any mineral lease selected from this Tract and awarded by the Louisiana State Mineral Board shall be without warranty of any kind, either express, implied, or statutory, including, but not limited to, the implied warranties of merchantability and fitness for a particular purpose. Should the mineral lease awarded by the Louisiana State Mineral Board be subsequently modified, cancelled or abrogated due to the existence of conflicting leases, operating agreements, private claims or other future obligations or conditions which may affect all or any portion of the leased Tract, it shall not relieve the Lessee of the obligation to pay any bonus due thereon to the Louisiana State Mineral Board, nor shall the Louisiana State Mineral Board be obligated to refund any consideration paid by the Lessor prior to such modification, cancellation, or abrogation, including, but not limited to, bonuses, rentals and royalties.

NOTE: The State of Louisiana does hereby reserve, and this lease shall be subject to, the imprescriptible right of surface use in the nature of a servitude in favor of the Department of Natural Resources, including its Offices and Commissions, for the sole purpose of implementing, constructing, servicing and maintaining approved coastal zone management and/or restoration projects. Utilization of any and all rights derived under this lease by the mineral lessee, its agents, successors or assigns, shall not interfere with nor hinder the reasonable surface use by the Department of Natural Resources, its Offices or Commissions, as herein above reserved.

NOTE: It appears, according to our records, that a portion of this Tract is located within the restrictive safety fairway area as set out by the

Corps of Engineers, U.S. Army and/or the restrictive anchorage area as set out by the U.S. Coast Guard.

Applicant: DELTA LANDS EXPLORATION, INC.

Bidder	Cash Payment	Price/Acre	Rental	Oil	Gas	Other

Legend

- 08120082
- Blocks
- Active_Leases

PLAQUEMINES PARISH

SP0042



P.O.B.

SL 17193

GULF OF MEXICO

SOUTH PASS AREA

SP0041

